

Highlights

Interpretable Speech Features vs. DNN Embeddings: What to Use in the Automatic Assessment of Parkinson's Disease in Multi-lingual Scenarios

Anna Favaro, Yi-Ting Tsai, Ankur Butala, Thomas Thebaud, Jesús Villalba, Najim Dehak, Laureano Moro-Velázquez

- Both interpretable and non-interpretable features displayed robust behaviors.
- Models based on non-interpretable features outperformed interpretable ones.
- Interpretable feature-based models provide insights into speech and language deterioration.
- Non-interpretable feature-based models can be used to achieve higher detection accuracy.

Interpretable Speech Features vs. DNN Embeddings: What to Use in the Automatic Assessment of Parkinson's Disease in Multi-lingual Scenarios

Anna Favaro^{a,*}, Yi-Ting Tsai^{a,*}, Ankur Butala^{b,c}, Thomas Thebaud^a, Jesús Villalba^a, Najim Dehak^a, Laureano Moro-Velázquez^a

^a*Department of Electrical and Computer Engineering, The Johns Hopkins University, Baltimore, 21218, MD, US*

^b*Department of Neurology, The Johns Hopkins University, Baltimore, 21218, MD, US*

^c*Department of Psychiatry and Behavioral Sciences, The Johns Hopkins University, Baltimore, 21218, MD, US*

Abstract

Individuals with Parkinson's disease (PD) develop speech impairments that deteriorate their communication capabilities. Speech-based approaches for PD assessment rely on feature extraction for automatic classification or detection. It is desirable for these features to be interpretable to facilitate their development as diagnostic tools in clinical environments. However, many studies propose detection techniques based on non-interpretable embeddings from Deep Neural Networks since these provide high detection accuracy, and do not compare them with the performance of interpretable features for the same task. The goal of this work was twofold: providing a systematic comparison between the predictive capabilities of models based on interpretable and non-interpretable features and exploring the language robustness of the features themselves. As interpretable features, prosodic, linguistic, and cognitive descriptors were employed. As non-interpretable features, x-vectors, Wav2Vec 2.0, HuBERT, and TRILLsson representations were used. To the best of our knowledge, this is the first study applying TRILLsson and HuBERT to PD detection. Mono-lingual, multi-lingual, and cross-lingual machine learning experiments were conducted on six data sets. These contain speech recordings

*Corresponding author

Email addresses: afavaro1@jhu.edu (Anna Favaro), ytsai25@jhu.edu (Yi-Ting Tsai)

from different languages: American English, Castilian Spanish, Colombian Spanish, Italian, German, and Czech. For interpretable feature-based models, the mean of the best F1-scores obtained from each language was 81% in mono-lingual, 81% in multi-lingual, and 71% in cross-lingual experiments. For non-interpretable feature-based models, instead, they were 85% in mono-lingual, 88% in multi-lingual, and 79% in cross-lingual experiments. On one hand, models based on non-interpretable features outperformed interpretable ones, especially in cross-lingual experiments. Among the non-interpretable features used, TRILLsson provided the most stable and accurate results across tasks and data sets. Conversely, the two types of features adopted showed some level of language robustness in multi-lingual and cross-lingual experiments. Overall, these results suggest that interpretable feature-based models can be used by clinicians to evaluate the evolution and the possible deterioration of the speech of patients with PD, while non-interpretable feature-based models can be leveraged to achieve higher detection accuracy.

Keywords: Parkinson’s disease, Machine learning, Deep learning, Interpretable features, Speech

1. Introduction

Parkinson’s disease (PD) is the second most common neurodegenerative disease after Alzheimer’s. It results from the gradual neuronal death in the substantia nigra [1], closely related to the production of dopamine neurotransmitters. Clinical diagnosis is based on cardinal motor signs [2] and other non-motor indicators (physiological and cognitive manifestations). The average time to diagnose PD in clinical setting can reach 2.9 years, with diagnostic accuracy around 80.6% (95% Credible Interval [CrI] 75.2%-85.3%) [3, 4]. In addition, tracking PD progression includes the adoption of subjective rating scales (e.g., Hoehn & Yahr [5]) that are considered to have low sensitivity and inter-rater reliability at the mild end of the symptom severity spectrum [6, 7]. This is due, in part, to the variable and subtle nature of the early symptomatic presentation. In this respect, novel technologies can speed up the diagnosis process, help test treatments before largely irreversible brain damage, and slow down the disorder’s progression. Voice disorders affect approximately 70 to 90% of individuals with PD [8, 9, 10, 11]. Initial studies designing interpretable features for PD evaluation have focused on representing phonatory, articulatory, and prosodic aspects such as perturbations of

fundamental frequency (jitter), perturbations of amplitude (shimmer), voice onset time, vowel space area, number of pauses, standard deviation of pitch and intensity, and formats [12, 13, 14, 15, 16, 17]. Others used linguistic descriptors to represent word dysfluencies, vocabulary richness, and word repetitions [18, 19, 20]. These features were usually adopted to classify the speech of subjects in PD and healthy controls (HC) with different classification techniques (e.g., Support Vector Machines, k-nearest neighbors, multilayer perceptrons) [21, 22, 23, 24]. Even though designing interpretable features is desirable in clinical practice, this process can entail significant effort in terms of computation and domain expertise. Domain expertise is required to provide the definition of interpretability for the domain of application and to design the features for machine learning (ML) [25]. Over the last few years, Deep Neural Networks (DNNs) have been extensively adopted in PD detection. In particular, Convolutional Neural Networks (CNNs) have been used to extract features from spectrograms or phonological features from Mel-Frequency Cepstral Coefficients (MFCCs) [26, 27, 28]. Other studies have explored the use of speaker recognition technologies such as i-vectors and x-vectors in parameterizing articulatory, prosodic, and phonatory information characteristic of speakers with PD [29, 30, 31, 32]. The use of Deep Learning (DL) is increasing in neurology, pathology, and medicine in general [33, 34, 35]. However, the lack of transparency and accountability of predictive models can have severe consequences and generally poor use of limited valuable resources in medicine and other domains [36].

Among the existing studies developing speech-based features for PD detection, few of them extended their analysis to a multi-lingual cohort. Hazan et al. [37] focused on the automatic detection of PD in English and German. They reached 85% accuracy using Support Vector Machines (SVM) in mono-lingual and 75% in multi-lingual experiments, respectively. Orozco-Arroyave et al. [38] performed cross-lingual experiments with Spanish, German, and Czech data sets. Accuracy ranges from 60% to 99%, depending on the language combination and the ratio of training/testing data. Regarding a single-language evaluation, the accuracies were between 85% and 99%. The most valuable features were based on MFCCs and Bark band energies calculated from unvoiced segments of reading text. Moro-Velázquez et al. [39] reached accuracies between 75% and 82% when classifying PD individuals in cross-lingual experiments considering Castilian Spanish, Colombian Spanish, and Czech data sets. For this purpose, they used an approach based on phonemic grouping. Plosives, vowels, and fricatives were the most relevant acoustic

segments for the detection of PD. Using text-dependent utterances as a speech task led to the highest performance. Vásquez Correa et al. [40, 27] used CNNs and a transfer learning strategy to classify PD in Spanish, German, and Czech. Accuracies varied from 70% to 77%. Classifying German- and Czech-speaking participants with PD was more accurate when pre-training the model on the Spanish data set. Kovac et al. [41] showed that particular language tasks used for PD detection (e.g., monologue) are very language-dependent and that just a few features (e.g., prosodic) have significant discrimination power across the Czech and US-English language. The classification accuracy reported in their experiments dropped from 72–73% to 67% when moving from single-language modeling to multi-lingual one. Differently, Kovac et al. [42] analyzed acoustic features of Czech, American, Israeli, Colombian, and Italian PD and HC participants using correlation and statistical tests. Classification accuracies ranged from 67% to 85% in mono-lingual experiments and from 53% to 79% in cross-lingual experiments using leave-one-language-out. Performance varied depending on the language.

Most of the mentioned studies have different limitations. Some only analyzed acoustic or linguistic descriptors, which limits the characterization of PD to a unique domain. Others only leveraged DL techniques to detect PD from speech, which is not entirely desirable in clinical applications, given their limited interpretability. Others only considered a single language task (e.g., sustained vowel phonation, diadochokinetic task) or only one or two languages simultaneously. Thus, the task of PD detection from language and speech requires adopting a broader set of languages, focusing on a more comprehensive set of descriptors, and collecting speech samples from different tasks to deliver an exhaustive characterization of the disorder.

The main goal of this work is to perform a systematic comparison between interpretable feature-based models (IFMs) and non-interpretable feature-based models (NIFMs) for the detection of PD from speech. As previously discussed by Rudin [25], there is a wide belief that using more complex models leads to greater accuracy in predictions, which suggests that a complex *black box* is necessary for achieving optimal results. However, this notion is frequently disproven, especially in cases where the data is structured and has natural, meaningful features to be effectively represented. As shown by some works in data science [43, 44, 45], in such situations, the performance of more complex classifiers like deep neural networks tend to be comparable to that of simpler classifiers such as logistic regression and decision lists after preprocessing. In our study, we wanted to assess whether simpler models

Data set	Spontaneous speech	Read passage	Text dependent utterance
NLS	1	2	0
Neurovoz	1	0	6
GermanPD	1	1	5
CzechPD	1	1	0
GITA	1	1	6
ItalianPVS	0	2	10

Table 1: Typologies of tasks analyzed with the corresponding number (#) of samples available in each data set. Abbreviations: SS, Spontaneous Speech; RP, Read Passage; TDU, Text Dependent Utterance.

based on meaningful and interpretable features can achieve a performance comparable to more complex models based on novel DNN-based representations such as TRILLsson [46], Wav2Vec 2.0 [47], and HuBERT [48]. Moreover, we intended to evaluate which of the two typologies of representations encodes more suitable information for the task of PD detection and to which extent the representations adopted are language robust. To do so, we performed mono-lingual, multi-lingual, and cross-lingual experiments using three different speech tasks and six corpora simultaneously. To the best of our knowledge, there are no studies that conducted a comparison between the predictive capabilities of interpretable and non-interpretable speech-derived features in PD detection across languages.

2. Materials

Mono-lingual, multi-lingual, and cross-lingual experiments comprised six corpora: American English, Castilian Spanish, Colombian Spanish, German, Italian, and Czech. The data sets used for each language are described below. From each data set, we employed speech recordings from three types of tasks (when available): spontaneous speech (SS) (e.g., monologue, picture description), reading passage (RP), and text-dependent utterances (TDUs) (short read sentences). Table 1 summarizes the typology of tasks adopted in this study and the data sets in which these tasks are available. Demographic and disease severity statistics of American English, German and Italian corpora are reported in Table 2, while those of Castillian, Colombian, and Czech are reported in Table 3.

2.1. American English

The authors of this study collected a data set called NeuroLogical Signals (NLS) at Johns Hopkins Medicine (JHM). This data set consists of spoken responses from participants who are native speakers of American English. The participants were categorized as either having a neurological disorder or being HC and received treatment and diagnosis from expert neurologists at JHM. All participants underwent informed consent, and the data collection was approved by the Johns Hopkins Medical Institutional Review Board. Due to the COVID-19 pandemic, all participants wore the same type of surgical mask during recordings, which minimally interfered with their jaw and lip movement. Participants with PD continued their usual pharmacological treatment and took dopaminergic medication before the recording session. Speech signals were recorded in acoustically and visually controlled conditions with a computer and microphone. The study included 23 participants with PD and an HC group of 27 participants matched in age with the PD group. None of the participants in the HC group has a history of symptoms related to PD or any other NDs. The subset of tasks analyzed from this corpus consists of a SS task and two RP tasks. The SS task is represented by a Cookie Theft Picture description task [49], in which participants are required to describe the Cookie Theft Picture from the Boston Diagnostic Aphasia Examination [50]. The protocol sets a limit of 60s on the execution of this task. In the two RPs instead, participants are instructed to read two short passages consisting of 87 and 174 words, respectively, from a printed sheet.

2.2. Castilian Spanish

The Neurovoz data set contains recordings from 47 HCs and 32 participants with PD who are native speakers of Castilian Spanish. The Bioengineering and Optoelectronics Group at Universidad Politecnica de Madrid and the Otorhinolaryngology and Neurology Departments of the Gregorio Marañón hospital (Madrid, Spain) collected the speech samples. The experimental protocols and methods were approved by the Ethics Committee of Hospital General Universitario Gregorio Marañón in accordance with the Helsinki Declaration [51], and all participants gave informed consent. Before the recording session, a neurologist assessed the neurological state of participants with PD, while a survey was administered to evaluate the neurological condition of HC participants. PD participants were under pharmacological treatment and took dopaminergic medication before the recording session. Speech signals were collected in a room with controlled acoustic characteristics using a headset

microphone. Recordings were sampled at 44.1 kHz with a resolution of 16 bits. The data set included recordings from six TDUs and running speech from the description of a picture (SS task). The SS task did not have a time limit. For the TDUs, participants did not read the sentences from a text document but instead listened to them from a recording of a standard speaker and repeated them out loud to reduce noise, reading mistakes, and cognitive load.

2.3. Colombian Spanish

The GITA data set was collected by Universidad de Antioquia in Medellín, Colombia, and includes speech samples from 50 individuals with PD and 50 age- and sex-matched HC who are native speakers of Colombian Spanish. The data collection adhered to the Helsinki Declaration and was approved by the Ethics Committee of Clínica Noel in Medellín, and all participants provided informed consent. PD patients were diagnosed by neurology experts and took dopaminergic medication within 3 hours before the start of the recording session. HC participants reported no symptoms related to PD or other NDs. The recordings were conducted in a quiet room using an external microphone at a sampling rate of 44.1 kHz with a resolution of 16 bits. The data set includes three types of speech tasks: a SS task (monologue) where participants describe their typical daily activities, six TDUs, and a phonetically balanced RP. The SS task had no time limit, and the recorded samples were approximately 44 s long.

2.4. German

The GermanPD data set comprises speech recordings from 88 participants with PD and 88 HC participants who are native German speakers. The data were collected at the Hospital of Bochum in Germany and approved by the ethics committee of the Ruhr-University Bochum. All participants provided informed consent. The participants with PD received dopaminergic medication before the recording session. Speech samples were collected using commercial audio software and a headset microphone in a quiet room. Recordings were sampled at 16 kHz with a resolution of 16 bits. The subset of tasks analyzed in this study includes ten TDUs, one RP composed of eighty-one words, and a SS task. The protocol did not impose a time limit on the execution of the SS task, and the SS samples last about 33 s. The neurological state of participants with PD was assessed by a neurologist, and none of the HC participants reported symptoms associated with PD or other neurological disorders.

2.5. *Italian*

The ItalianPVS corpus¹, comprises recordings from 22 elderly HCs, 28 young HCs, and 28 participants diagnosed with PD. All information regarding participant consent is available in their reference papers or dissemination platforms, which are cited in this paper. None of the participants with PD reported any speech or language disorders unrelated to their PD symptoms prior to this study. All participants with PD received dopaminergic medication at the time of the recording. Speech samples were collected in a quiet, echo-free room, using an external microphone. Recordings were sampled at 16 kHz. The set of tasks analyzed in this study consists of recordings from ten phonetically balanced TDUs and one phonetically balanced RP. Prior to starting the reading tasks, a specialist introduced the participants to the task to be performed, and both the short sentences and the RP were read from a printed sheet.

2.6. *Czech*

The CzechPD data set was collected in the General University Hospital in Prague, Czech Republic. It comprises speech recordings from 20 untreated male participants newly diagnosed with PD and 15 age-matched HC individuals who speak Czech natively. The data collection process adhered to the Helsinki Declaration, and the Ethics Committee of the hospital approved it. Every participant provided informed consent. Participants with PD did not take any antiparkinsonian treatment before recording. The recording session took place in a quiet room. Speech samples were collected with an external condenser microphone and originally sampled at 48 kHz with a resolution of 16 bits. Participants were familiarized with the task and procedure before each recording session. In this study, participants performed various speaking tasks, including a phonetically balanced reading passage and a monologue task, where they spoke about their daily activities, interests, jobs, or family. The SS samples lasted approximately 90 s, and there were no time limits imposed on the recording.

¹<https://iee-dataport.org/open-access/italian-parkinsons-voice-and-speech> (last accessed on 4 February 2023)

Data set	NLS				German PD				ItalianPVS			
Gender	Female		Male		Female		Male		Female		Male	
Group	PD	HC	PD	HC	PD	HC	PD	HC	PD	HC	PD	HC
Number of Subjects	9	16	14	11	41	44	47	44	9	12	19	10
Age, Average	68.00	63.31	66.62	66.09	67.23 (9.7)	62.6 (15.2)	66.7 (8.7)	63.8 (12.7)	64.3 (12.2)	65.3 (4.1)	68.6 (6.4)	69.3 (5.6)
Age Range	50-75	26-83	55-79	41-79	27-84	28-85	44-82	26-83	40-80	60-72	50-77	60-77
UPDRS-III*, Average (SD)	25.33 (9.72)	-	27.71 (13.63)	-	23.3 (12.0)	-	22.1 (9.9)	-	-	-	-	-
UPDRS-III.I Average (SD)	0.88 (0.56)	-	0.83 (0.68)	-	-	-	-	-	1.10 (1.3)	-	1.00 (1.00)	-
Hoehn and Yahr* Scale Average (SD)	2.37 (0.41)	-	2.23 (0.37)	-	2.61 (0.83)	-	2.59 (0.60)	-	-	-	-	-
Years Since Diagnosis (SD)	-	-	-	-	6.47 (5.83)	-	6.59 (4.93)	-	-	-	-	-

Table 2: Demographic and disease severity statistics of NLS, GermanPD, and ItalianPVS data sets. Ages are expressed in years. *NLS contains global values of Movement Disorder Society UPDRS part III (i.e., movement examination); GermanPD contains global values of UPDRS part III (i.e., movement examination). The ItalianPVS corpus only contains UPDRS-III.I (i. e. speech examination). The Hoehn and Yahr* scale is available only for NLS, and GermanPD, but not for ItalianPVS.

3. Methods

Our pipeline employed a standard “feature extraction-classification” scheme. Nested Cross-Validation (NCV) was applied in the experiments to evaluate the two different representation techniques.

3.1. Data Pre-processing

All recordings were resampled at 16 kHz as required by the algorithms employed for the feature extraction (see Section 3.2). The resampling was performed using SoX.² We also applied EBU R128 loudness normalization procedure using the Python library *ffmpeg-normalize*.³ This type of normalization leads to a more uniform loudness level compared to simple peak-based normalization. Normalized audios were used to extract intensity-related features (see Section 3.2.1). Moreover, whenever a given participant had more

²<https://sox.sourceforge.net/>, last accessed on 26 January 2023.

³<https://pypi.org/project/ffmpeg-normalize/>, last accessed on 26 January 2023.

Data set	Neurovoz				GITA				CzechPD	
	Female		Male		Female		Male		Male	
	PD	Ctrl	PD	Ctrl	PD	Ctrl	PD	Ctrl	PD	Ctrl
Number of Subjects	18	18	29	14	25	25	25	25	20	16
Age, Average (SD)	70.9 (8.4)	68.4 (6.0)	71.9 (12.3)	66.6 (6.4)	60.7 (7.3)	61.4 (7.0)	61.5 (11.6)	60.5 (11.6)	61 (11.7)	61.8 (12.9)
Age Range	59-86	58-83	41-88	55-77	49-75	49-76	33-81	31-86	34-83	36-80
UPDRS-III*, Average (SD)	16.9 (11.5)	-	19.6 (11.8)	-	37.5 (14.0)	-	37.7 (22.0)	-	17.9 (7.1)	-
Hoehn and Yahr Scale Average (SD)	2.30 (0.68)	-	2.30 (0.80)	-	2.28 (0.53)	-	2.34 (0.53)	-	2.17 (0.45)	-
Years Since Diagnosis (SD)	6.4 (6.4)	-	7.6 (4.7)	-	12.6 (11.5)	-	8.9 (5.9)	-	2.4 (1.6)	-

Table 3: Demographic and disease severity statistics of Neurovoz, GITA and CzechPD data sets. Ages are expressed in years. *The Neurovoz corpus only contains UPDRS-III, i. e. motor examination; GITA contains global values of Movement Disorder Society UPDRS; CzechPD contains global values of UPDRS.

than one speech sample within a given task, we concatenated all the recordings to form a single one. In doing this, we trimmed silences at the end and beginning of each recording. We supervised all the recordings in the NLS data set to ensure they had appropriate quality. Criteria for appropriate quality encompassed no distortion, minimal background noise, and a task-related response. When the recordings contained speech from the investigator at the beginning and end, we trimmed the recordings. All the recordings from the SS task were automatically transcribed using OpenAI’s Whisper⁴ [52], an Automatic Speech Recognition (ASR) system trained on 680.000 hours of multi-lingual and multitask supervised data collected from the web. American English transcriptions underwent manual supervision.

3.2. Feature Extraction

We adopted two distinct characterizations to represent speech traits connected to the onset and progression of PD. On the one hand, we configured a set of interpretable features, some of them already proposed in our previous

⁴<https://openai.com/blog/whisper/>

Feature type	# of features	Feature description
Interpretable features		
Acoustic	30	Features based on F0 (e.g., F0-standard deviation)
	48	Features based on energy (e.g., energy-contour on voiced segments)
	24	Features based on duration (e.g., voiced rate)
	20	Feature based on pauses (e.g., mean pause length)
Linguistic	10	Features based on the part of speech (POS) (e.g., number of verbs)
	2	Features based on syntactic phrases (e.g., number of noun phrases)
Cognitive	2	Feature based on rhythm (i.e., speech rhythm standard deviation)
	1	Feature based on informational content (e.g., number of correct informational units)
Non interpretable features		
X-vectors	–	X-vector embeddings pre-trained on Voxceleb1 and Voxceleb2
TRILLsson	–	TRILLsson1 embeddings distilled on AudioSet and Libri-light from a CAP12 teacher model pre-trained on YT-U
Wav2Vec 2.0	–	Wav2Vec 2.0 embeddings pre-trained on LibriSpeech
HuBERT	–	HuBERT embeddings pre-trained on LibriSpeech

Table 4: Summary of the interpretable and non-interpretable features extracted.

works [53, 54, 55], encoding prosodic, linguistic, and cognitive information. A more detailed list of the interpretable features extracted is provided in the Supplementary Material. On the other hand, non-interpretable speech representations, namely neural network embeddings extracted using pre-trained DNNs, were utilized. A summary of the features extracted for both approaches is reported in Table 4.

3.2.1. Interpretable Features

Prosodic Features. Prosody is one of the most deteriorated speech dimensions in hypokinetic dysarthria, a motor speech disorder associated with PD [56, 57]. The speech of individuals with PD is usually characterized by monopitch, monoloudness, reduced overall loudness, short rushes of speech, speech rate abnormalities, excessive and longer speech pauses, and reduced stress [56, 58, 59, 60]. To extract prosody features based on duration, fundamental frequency, and energy, we used Disvoice⁵, a Python library designed to extract phonological, prosodic, articulatory, and glottal features from speech. To compute loudness variation, we used Parselmouth⁶, a Python library for

⁵<https://github.com/jcvasquezc/DisVoice>

⁶<https://parselmouth.readthedocs.io/en/stable/>

model.¹¹ In addition, it has been shown that subjects with PD report a lower informational content than HCs when required to mention the main characters or events represented in a picture [54, 66, 67, 68].

We also represented the informativeness of the narratives in terms of the number of correct informational units (IU). According to [69], an IU is a *word that is intelligible in context, accurate in relation to the picture or topic, and relevant to and informative about the content of the picture(s) or the topic*. In our analysis, we employed the speech transcripts of the recordings collected during the picture description tasks from both NLS and Neurovoz. We considered IUs, the salient events displayed in the picture presented as a stimulus to elicit the narrative [55]. To identify the salient IUs for the CTP task, we leveraged the published checklists for the CTP [70, 71]. Thus, IUs were represented by verbs like *washing, drying, stealing, overflowing, trying to help, falling, wobbling, hanging, ignoring, reaching up, asking for cookie, laughing, standing*. On the other hand, we adopted the verbs *barrer, lavar, pesar, ducharse* to represent the four main actions displayed in the picture used in Neurovoz. A total of four cognitive features were extracted.

3.2.2. Non-interpretable Features

X-vectors. These are embedding features extracted from DNNs used for speaker recognition tasks [72]. They are very robust speaker representations, and their network scheme can be adapted to apply to language and emotion recognition as well [73, 74]. Previous studies showed that x-vectors are effective in differentiating between the speech of PD and HC, and they work equally well for early PD detection in bi-class scenarios [31, 32]. More importantly, x-vectors display robustness to language dependency. In the two studies mentioned above, x-vector models were trained on Voxceleb1 [75] to extract speaker embeddings. An excellent performance was achieved when evaluating both French and Spanish PD data sets. Besides the benefit of capturing multi-lingual PD characteristics, x-vectors have large pre-trained models. When it comes to DNN schemes for PD detection, more training data is needed. However, since pre-trained x-vector models can be directly applied without further training, they can be extracted from all the different data sets regardless of the amount of available data. In our analysis, the pre-trained

¹¹The code used to extract word token timestamp is available at <https://github.com/jianfch/stable-ts>.

x-vector model¹² available from SpeechBrain [76] was used. SpeechBrain is an open-source and all-in-one conversational AI toolkit based on PyTorch. This particular x-vector model was trained on both Voxceleb1 (English only) [75], and Voxceleb2 (multi-lingual) [77]. Given a speech recording as input, the model extracts an x-vector of size 512. Recordings need to be sampled at 16 kHz.

Self-Supervised Representations. Depending on the domain of application, labeled data are challenging to obtain. Thus, research into pre-training models with unlabelled data has significantly advanced. In this respect, self-supervised learning (SSL) involves training a model on a large amount of unlabelled data and learning an acoustic representation to be used on a downstream task. Most SSL models rely on unsupervised pre-training followed by supervised fine-tuning on a downstream task. The unsupervised pre-training allows a model to benefit from the large amounts of unlabeled data which are readily available. The following approaches were used in this study.

- *TRILLsson.* Paralinguistic representations encode non-lexical elements of communication of speech, such as emotion and tone. In [78], the CAP12 model was introduced. The model extracted state-of-the-art paralinguistic representations from large-scale, fully self-supervised training of a 600M+ parameter Conformer-based architecture. It has been shown that simple linear classifiers trained on top of time-averaged CAP12 representations outperformed nearly all previous state-of-the-art representations on paralinguistic tasks such as speech emotion recognition, synthetic speech detection, and dysarthria classification. The publicly available versions of CAP12 are TRILLsson models. They use knowledge distillation to derive smaller, faster, and more mobile-friendly architectures than the original CAP12 model [46]. Distillation was performed on the public data sets Audioset [79], and Libri-light [80], with CAP12 as teacher model trained on YT-U [81]. The distilled TRILLsson1 model¹³ was used in this study. Despite being much smaller, TRILLsson models outperformed publicly available representations like TRILL [82] and Wave2Vec2.0 [47] on multiple paralinguistic tasks. Sim-

¹²<https://huggingface.co/speechbrain/spkrec-xvect-voxceleb>

¹³<https://tfhub.dev/s?q=trillsson>

ilar to the x-vector model, given a speech recording of any length as input, the TRILLsson1 model extracts embedding of a fixed size (i.e., 1,024). Recordings need to be sampled at 16 kHz. Because feature extraction from long recordings required relatively complex computation, recordings were separated into 1 s segments. If a speech segment was less than 10 s, it was zero-padded to be so. For each recording, the final embedding was set to be the average of the embeddings extracted from its 10 s segments. As a pre-trained model, TRILLsson has the same advantage as x-vectors: it can be directly applied without further training. Thus, embeddings can be extracted without particular concerns about the amount of data available. To our knowledge, no previous studies have employed TRILLsson representations for the automatic detection of PD from speech.

- *Wav2Vec 2.0*. This is a self-supervised architecture that learns speech representations by masking latent representations of the raw waveform and solves a contrastive task over quantized speech representations [83]. Wav2Vec 2.0. models are widely used to extract features that can be used as input to downstream speech-related tasks, such speaker identification [84, 85], speaker verification [86], dementia, dysfluency, vocal fatigue detection, and Parkinson’s detection [87, 88, 89]. In this study, we used a ported version of S3PRL’s Wav2Vec 2.0 for the SUPERB Speaker Identification task [90]. In [90], a Wav2Vec 2.0. base-model (95M parameters) [83] pre-trained on Librispeech (LS-960) was used as the upstream model and fine-tuned on a Speaker Identification (SID) task¹⁴ using the VoxCeleb1 data set. The downstream model is constituted by mean-pooling followed by a linear transformation, and it is optimized using cross-entropy loss. Differently from the experiments in the SUPERB benchmark, in our task, we used a single-layer representation instead of the weighted sum of outputs of all layers from the base model. We used the 768–dimensional intermediate representations outputted from one of the layers of the model. Representations from all layers were considered. Similar to TRILLsson, because feature extraction from long recordings required relatively complex computation, long recordings were separated into 10 s segments. If a speech segment was

¹⁴<https://huggingface.co/superb/wav2vec2-base-superb-sid>

less than 10s, it was zero-padded to be so. At each layer, the model extracts an embedding for every 20 ms of each 10 s audio segment. A 1–D feature vector of size 768 representing each audio segment was then obtained by computing the mean of the embeddings along the time axis. For each recording, the final embedding was set to be the average of the feature vectors extracted from its 10 s segments. To our knowledge, we are the first to apply this representation in multi-lingual and cross-lingual PD detection.

- *HuBERT*. Among the various speech SSL models, Hidden-unit BERT (HuBERT) is one of the most prominent models for speech recognition [48]. On the LibriSpeech [91] benchmark, fine-tuned HuBERT using connectionist temporal classification (CTC) [92] achieves state-of-the-art word error rate (WER) results. Typical approaches to improve model efficiency include knowledge distillation [93], pruning [94], and model quantization [95]. Only a few works explored the performance of HuBERT on different downstream tasks. Yang et al. [90] showed that HuBERT attained the most competitive performance on a set of different downstream tasks such as speaker diarization, automatic speaker verification, and slot filling. In this study, we used a ported version of S3PRL’s HuBERT for the SUPERB SID task[90]¹⁵. Like Wav2Vec 2.0., we used a single-layer representation instead of the weighted sum of all layers. Representations from all layers were considered. Long recordings were separated into 10 s segments. If a speech segment was less than 10 s, it was zero-padded to be so. At each layer, the model extracts an embedding for every 20 ms of each 10 s audio segment. An 1–D feature vector of size 768 representing each audio segment was then obtained by computing the mean of the embeddings along the time axis. For each recording, the final embedding was set to be the average of the feature vectors extracted from its 10 s segments. To our knowledge, no previous studies have analyzed this representation for the task of PD detection.

3.3. Classifiers

The classification process is depicted in Figure 1 for each cross-validation iteration. The standardization part will be further explained in Section 4. As classifiers with the interpretable features, we used: Support Vector

¹⁵<https://huggingface.co/superb/HuBERT-base-superb-sid>

Machine (SVM), K-Nearest Neighbors (KNN), Random Forest (RF), Extreme Gradient Boosting (XGBoost), and Bagging (BG).¹⁶ As classifiers with non-interpretable features, we used Probabilistic Linear Discriminant Analysis (PLDA) after performing Principal Components Analysis (PCA) dimensionality reduction, similarly to Moro-Velazquez et al. [31]. The PCA transformation matrix was trained with the training embeddings and was subsequently applied to transform training, validation, and testing embeddings for each iteration. After feature dimensionality reduction to a dimensionality range between 5 to 55 with a step size of 5 by PCA (hyperparameter to be tuned), the PLDA model¹⁷ was trained from the PCA-reduced training subset. Both the mean of PCA-reduced PD training embeddings and the mean of PCA-reduced HC training embeddings were used as enrollment embeddings in PLDA for scoring. Given a PCA-reduced testing or validation embedding, a log-likelihood ratio with respect to the two enrollment embeddings was obtained. This ratio was compared with the equal error rate (EER) threshold from all of the ratios from the training subset. If the ratio was greater than the EER threshold, the given testing or validation sample was classified as PD. Otherwise, it was classified as HC.

3.4. Nested Cross-Validation (NCV)

A Nested Cross-Validation (NCV) scheme was applied in our experiments. Feature selection, hyperparameter grid search, and a train-validation-test split can improve the accuracy of ML algorithms. However, it can contribute to overfitting in most cases, especially with small data sets. NCV is a common approach that can be adopted for feature selection and parameter tuning to obtain reliable classification accuracy and prevent overfitting [96, 97]. We split the data set into ten outer folds, and each fold was held out for testing while the remaining $k - 1$ folds (9 folds) were merged to form the outer training set. Each outer training set was further split into stratified inner folds for inner training and validation. In the inner folds, we identified the 30 best features (IFMs only) and hyperparameters via grid search. An Extremely

¹⁶To implement the different classifiers, we used the Scikit-learn (Sklearn) library in Python. See https://www.tutorialspoint.com/scikit_learn/scikit_learn_introduction.htm

¹⁷The PLDA model was implemented by the SpeechBrain toolkit. See <https://speechbrain.readthedocs.io/en/latest/API/speechbrain.processing.html>

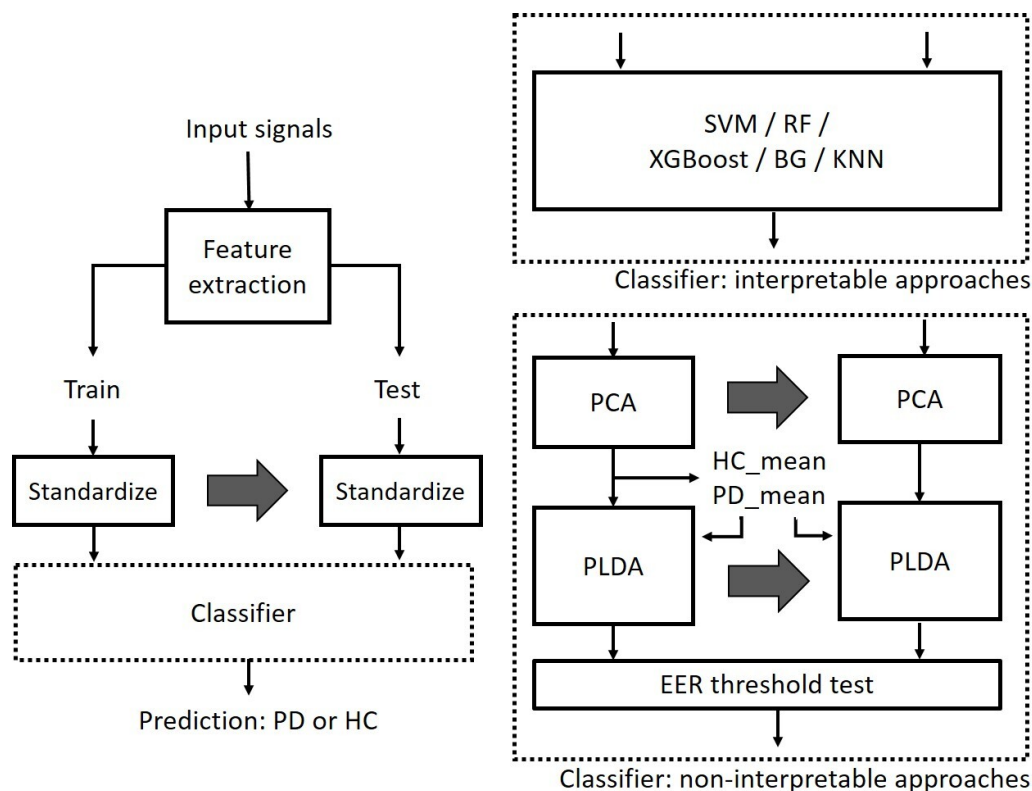


Figure 1: Machine learning pipeline.

Randomized Trees Classifier was used to perform feature selection.¹⁸ It is a type of ensemble learning technique which aggregates the results of multiple de-correlated decision trees to output its classification result. After getting the best hyperparameter configuration for each outer iteration using their corresponding inner folds, ten sets of unique best configurations were obtained.

Because we used small data sets, the best features, and hyperparameters selected across different outer iterations could have been unstable. To evaluate more stable architectures, the standard NCV process was modified. We used the average (or mode if not applicable) configuration across the ten sets of

¹⁸The documentation of the Python library used to implement the Extremely Randomized Trees Classifier can be found at <https://scikit-learn.org/stable/modules/generated/sklearn.ensemble.ExtraTreesClassifier.html>.

unique best configurations as the final configuration across all outer iterations. After obtaining the final best configuration, we trained and tested the model from scratch with the final best set of features and hyperparameters on the corresponding outer training/test fold and stored the results. The final results for each model corresponded to the average model performance on the test sets of the outer folds.

We adopted the same NCV process described above in the mono-lingual and multi-lingual experiments. In doing so, we ensured that training and testing subsets never contained the same speakers. This restriction is of crucial importance since mixing the same speakers across training, and testing sets enables models to learn characteristics specific to these speakers, making final prediction results biased and over-optimistic. For the cross-lingual experiment, a direct train-test split was applied instead since testing data and training data must not come from the same language or data set. 10-fold cross-validation was then performed using all training data for hyperparameter search. Data partition details are explained in the following section.

4. Experiments

In this study, we employed and compared the predictive capabilities of model based on interpretable and non-interpretable representations to detect the presence of PD. All experiments were conducted task-wise, using recordings from a unique language task at a time (i.e., SS, TDU, RP). Three types of experiments were performed:

- Mono-lingual: models were trained and tested on six different data sets separately. The aim of this experiment was to compare the performance of IFMs and NIFMs.
- Multi-lingual: models were trained using training data from all the languages and tested on each of them separately. The aim of this experiment was threefold. The first was exploring the language robustness of the features used in the detection task. The second was investigating whether using more data from different languages could benefit the classification results. The third, as reported for mono-lingual experiments, was comparing the performance of IFMs and NIFMs.
- Cross-lingual: models were trained with data from all but one language used for testing. The aim of this experiment was twofold. The first

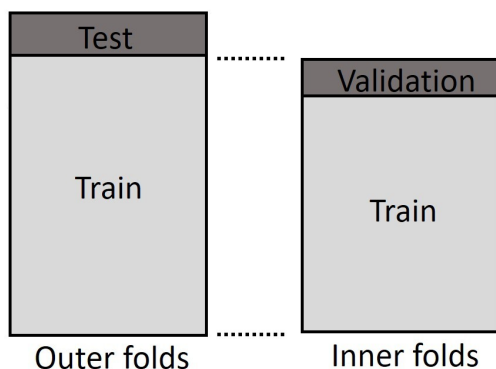


Figure 2: Mono-lingual experiment - data partition on a single data set.

was exploring the language robustness of the features used in the detection task. The second, as reported for mono-lingual and multi-lingual experiments, was comparing the performance of IFMs and NIFMs.

4.1. Mono-lingual

In mono-lingual experiments, NCV was applied to each data set individually, as depicted in Figure 2. Inner folds were split from the training subset assigned in outer folds. Data standardization was applied language-wise. During each outer iteration, every data set was standardized using the following transformation adapted from Kovac et al. [42]:

$$f_T = \frac{f - \tilde{f}_{HC}}{f_{HC-std}},$$

where, for a certain feature f , f_T is the transformed feature, \tilde{f}_{HC} and f_{HC-std} are the median and the standard deviation, respectively, of the HC observations for that feature in the training data.

4.2. Multi-lingual

In multi-lingual experiments, NCV was applied on all data sets together, as depicted in Figure 3. Each data set was split into outer folds separately. Then in each outer iteration, the training subsets of all data sets were merged into a common training set (e.g., Train 1 + Train 2 + Train 3, as shown in the figure) and split into inner folds for a grid search. After getting the

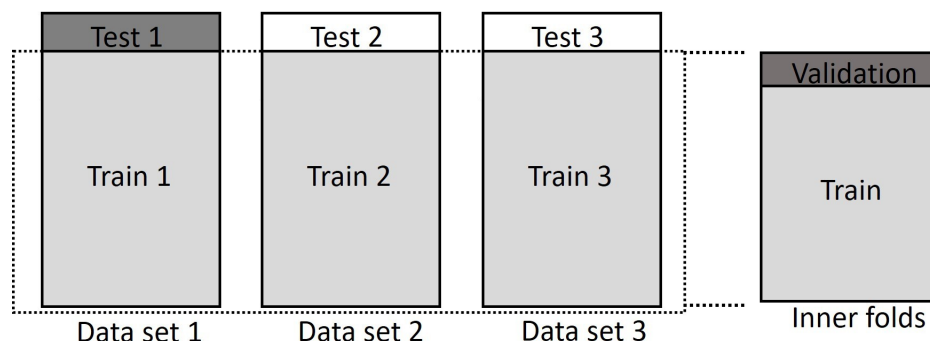


Figure 3: Multi-lingual experiment example - data partition on multiple data sets, with Data set 1 as the target data set to be evaluated. This illustration exemplifies our experimental approach with only three data sets but six data sets were used in our experiments.

optimal hyperparameters, in each outer iteration, training was conducted from scratch on the common training set, and testing was conducted on the target language test fold (e.g., Test 1, if the target data set is *data set 1*, as shown in the figure). Data standardization was performed in the same way as in mono-lingual experiments. In each outer iteration, language-wise data transformation was performed. That is, data in Train 1 and Test 1 will be standardized by the \hat{f}_{HC} and f_{HC-std} computed on Train 1 (see Figure 3). This type of standardization was introduced in order to avoid differences between the features' values of the language data sets. These differences can be caused by the acoustic and linguistic peculiarities of the languages, and by the different recording conditions adopted when collecting the data.

4.3. Cross-lingual

The training and testing set were separated in cross-lingual experiments (see Figure 4). All data sets but the target test data set were merged into a common training set (e.g., Train 1 + Train 2) and split into cross-validation folds for a grid search. After identifying the optimized hyperparameters on the training split, training was conducted from scratch on the common training set. The testing was conducted on the target language whole data set. For training data, data standardization was applied in the same way as in mono-lingual experiments. Data transformation was performed language-wise. For testing data, since the feature distribution was unknown, features were standardized by the average \hat{f}_{HC} and f_{HC-std} of all the data sets used in

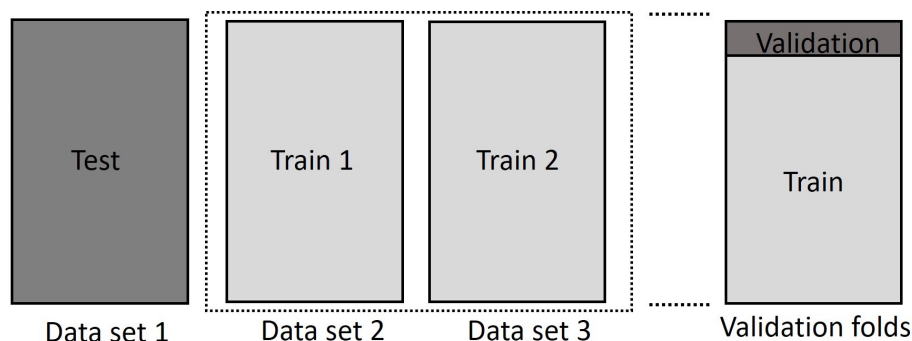


Figure 4: Cross-lingual experiment example - data partition on multiple data sets, with Data set 1 as the target data set to be evaluated. This illustration exemplifies our experimental approach with only three data sets but six data sets were used in our experiments.

training. That is, data in Train 1 was standardized by \tilde{f}_{HC1} and $f_{HC-std1}$, computed on Train 1. Data in Train 2 was standardized by \tilde{f}_{HC2} and $f_{HC-std2}$, computed on Train 2 (see Figure 4). Lastly, data in Test was standardized by the mean of \tilde{f}_{HC1} and \tilde{f}_{HC2} and the mean of $f_{HC-std1}$ and $f_{HC-std2}$.

5. Results and Discussion

Model performance was primarily evaluated in terms of F1-score (F1), and area under the ROC curve (AUC). Complete experimental results reporting accuracy (ACC), F1-scores, specificity (SPE), sensitivity (SEN), and AUC are reported in the Supplementary Material. For Wav2Vec 2.0. and HuBERT, all layers were experimented on. However, for Wav2Vec 2.0., embeddings extracted from the 4th layer generally performed the best. For Hubert, embeddings extracted from the 7th layer generally performed the best. Thus, only results obtained using embeddings from layer 4 (for Wav2Vec 2.0.) and layer 7 (for HuBERT) are considered. In the following subsections, we first discuss the results for IFMs and NIFMs separately. We then compare their performances in mono-lingual, multi-lingual, and cross-lingual experiments, respectively. The differences in model performances are reported in absolute terms.

5.1. Interpretable features

In mono-lingual experiments, F1-scores ranged from 50% to 98% and AUC from 0.50 to 1.00. In multi-lingual experiments, F1-scores ranged

from 50% to 87%, and AUC from 0.56 to 0.93. In cross-lingual experiments instead, performance significantly varied depending on the target language used in testing. In some experiments, higher performance was achieved using SS samples, while in others read speech samples. Figure 6 shows the results reported by the different classifiers employed during the mono-lingual experiments. Table 5 instead reports results obtained in mono-lingual, multi-lingual, and cross-lingual experiments when employing XGBoost as classifier. In this regard, XGBoost performed better on average than the other types of classifiers across data sets and tasks. ItalianPVS and Neurovoz were the two data sets on which IFMs achieved the best results in terms of F1 and AUC.

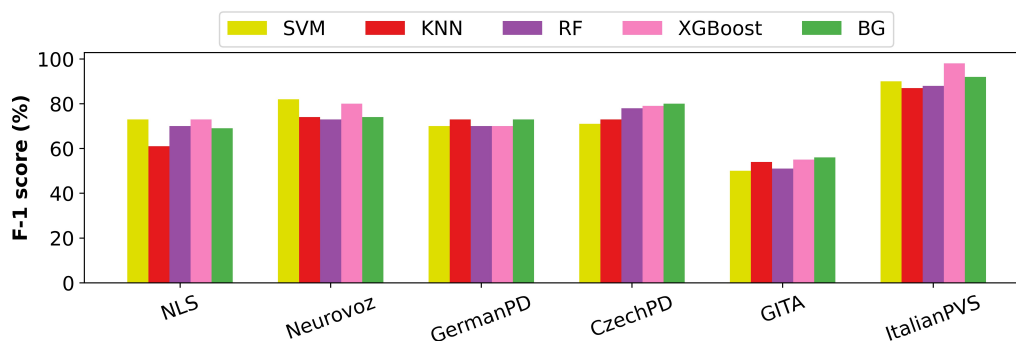


Figure 5: Results of mono-lingual experiments using interpretable features with 5 different classifiers: SVM (in yellow), KNN (in red), RF (in violet), XGBoost (in pink), and BG (in green). Results are reported in terms of F-1 score (%) on all the six different data sets considered. These results were obtained in the SS task, except for ItalianPVS, for which they were obtained in the TDU task.

5.2. Non Interpretable features

In mono-lingual experiments, F1-scores ranged from 63% to 91% and AUC from 0.64 to 1.00. In multi-lingual experiments, F1-scores ranged from 62% to 95% and AUC from 0.71 to 0.99. Similarly to what was observed for IFMs, in cross-lingual experiments, the performance of NIFMs did significantly vary depending on the target language considered in the experiments. Overall, TRILLsson, Wav2Vec 2.0., and HuBERT reported better classification results than x-vectors in mono-lingual and multi-lingual experiments. Experimental results obtained with non-interpretable features in the RP task and the TDU task (for Neurovoz only), respectively, are displayed in Fig. 6 (mono-lingual), 7 (multi-lingual), and 8 (cross-lingual).

Test	Task	Mono		Multi		Cross	
		F1	AUC	F1	AUC	F1	AUC
NLS (American English)	SS	0.73	0.80	0.70	0.77	0.72	0.75
	RP	0.60	0.63	0.72	0.77	0.72	0.79
Neurovoz (Castilian Spanish)	SS	0.80	0.93	0.80	0.80	0.69	0.71
	TDU	0.71	0.88	0.74	0.86	0.68	0.79
GermanPD (German)	SS	0.70	0.71	0.71	0.75	0.52	0.60
	RP	0.71	0.77	0.76	0.83	0.53	0.60
CzechPD (Czech)	SS	0.79	0.70	0.82	0.65	0.49	0.69
	RP	0.71	0.85	0.72	0.80	0.70	0.79
GITA (Colombian Spanish)	SS	0.55	0.57	0.60	0.62	0.51	0.55
	RP	0.70	0.71	0.66	0.74	0.51	0.50
ItalianPVS (Italian)	RP	0.92	0.98	0.85	0.88	0.77	0.76
	TDU	0.98	1.00	0.86	0.87	0.64	0.83

Table 5: Results of mono-lingual, multi-lingual, and cross-lingual experiments using interpretable features and XGBoost as classifier. Results are reported for SS, RP, and TDU tasks respectively. F-1 score and area under the ROC (AUC) are used as evaluation metrics. Abbreviations: mono, mono-lingual; multi, multi-lingual; cross, cross-lingual.

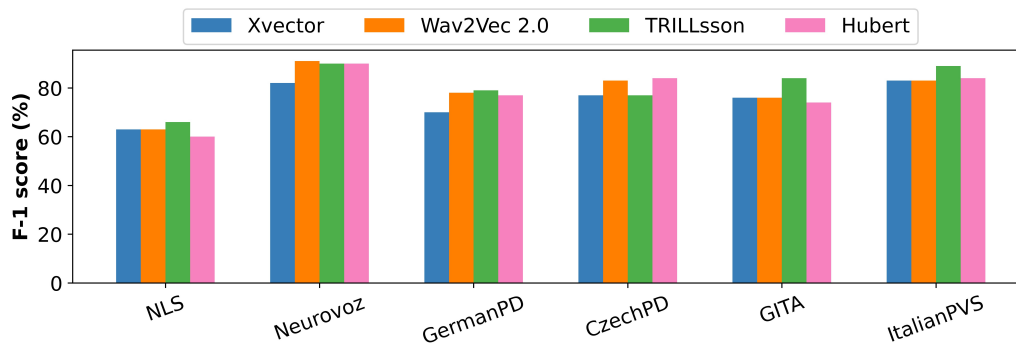


Figure 6: Results of mono-lingual experiments using non-interpretable features: x-vectors (in blue), Wav2Vec 2.0 (in orange), TRILLsson (in green) and Hubert (in pink). Results are reported in terms of F-1 score (%) on all the six different data sets considered. These results were obtained in the RP task, except for Neurovoz, for which they were obtained in the TDU task.

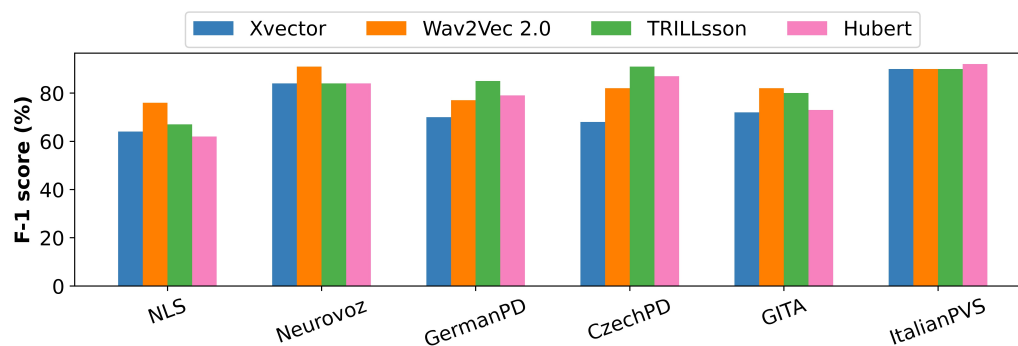


Figure 7: Results of multi-lingual experiments using non-interpretable features: x-vectors (in blue), Wav2Vec 2.0 (in orange), TRILLsson (in green) and Hubert (in pink). Results are reported in terms of F-1 score (%) on all the six different data sets considered. These results were obtained in the RP task, except for Neurovoz, for which they were obtained in the TDU task.

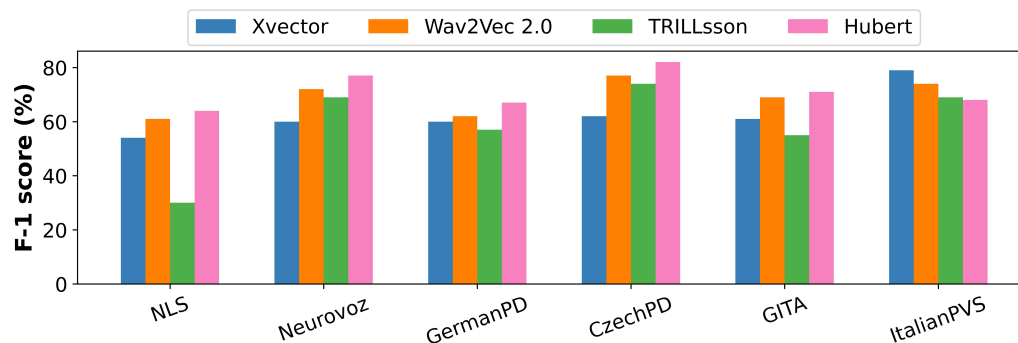


Figure 8: Results of cross-lingual experiments using non-interpretable features: x-vectors (in blue), Wav2Vec 2.0 (in orange), TRILLsson (in green) and Hubert (in pink). Results are reported in terms of F-1 score (%) on all the six different data sets considered. These results were obtained in the RP task, except for Neurovoz, for which they were obtained in the TDU task.

5.3. Interpretable vs. Non-Interpretable Features

Figures 9 and 10 report the best experimental results in terms of F1-score and AUC obtained in mono-lingual, multi-lingual, and cross-lingual experiments using interpretable and non-interpretable features, respectively. Results are reported language-wise for each task analyzed.

Mono-lingual. For IFMs, the mean of the best F1-scores across languages was 81%, and that of AUC was 0.87. For NIFMs, the mean of best F1-scores across languages was 85%, and that of AUC was 0.91. In particular, NIFMs worked better than IFMs in Colombian Spanish, Czech, and German. On Italian, Castilian, Spanish, and American English, IFMs achieved similar results to those reported by NIFMs and, in some cases, slightly better, as observed on ItalianPVS. On average NIFMs performed better than IFMs by $\sim 4\%$ and 0.04 considering F1-score and AUC, respectively.

In mono-lingual experiments, NIFMs had more inconsistent distributions in specific languages, resulting in varying optimal decision thresholds. This fact contributed to a discrepancy between F1 and AUC results. The classification results achieved using interpretable features were lower than those achieved using non-interpretable features. However, our IFMs reported an improvement over previous models. Namely, the performances of our best IFMs on CzechPD and ItalianPVS outperformed those reported by Kovac et al. [41, 42] based on acoustic descriptors by more than 10 percentual absolute points in ACC. Similarly, TRILLsson reported best AUCs of 0.95, 0.87, 0.84 on Neurovoz, GITA, and GermanPD, which were 0.01, 0.03, and 0.16 higher than the x-vector approach of [31], the CNN approach of [28], and the mono-lingual CNN approach of [27], respectively. In this regard, HuBERT/Wav2Vec 2.0. reported best AUCs of 0.96, 0.90, and 0.88 on Neurovoz, GITA, and GermanPD, respectively, which were even higher than those achieved with TRILLsson.

Multi-lingual. For IFMs, the mean of the best F1-scores across each language was 81%, and that of AUC was 0.86. For NIFMs, the mean of the best F1-scores across each language was 88%, and that of AUC was 0.93. On average NIFMs performed better than IFMs by 7% and 0.07 considering F1-score and AUC, respectively.

For both IFMs and NIFMs, using a multi-lingual training data set led to an improvement ≥ 0.05 for both F1 and AUC in some tasks in almost all languages, with respect to the mono-lingual experiments. In addition,

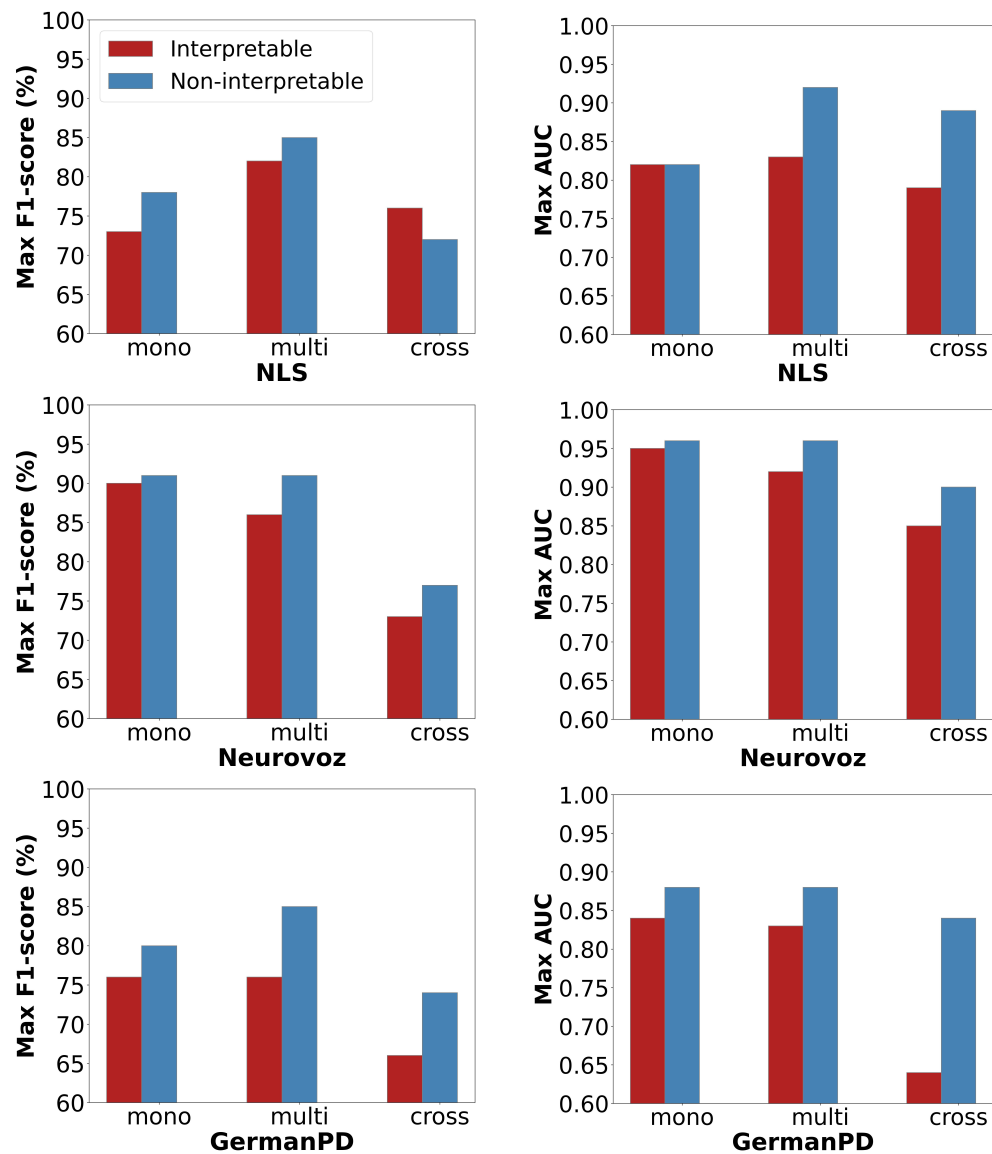


Figure 9: Bar plots describing the best F1-scores (left panel) and AUC (right panel) across tasks using IFMs (in red) and NIFMs (in blue), respectively. For each evaluation metric, mono-lingual, multi-lingual, and cross-lingual experimental results on NLS, Neurovoz, and GermanPD are reported. Abbreviations: Mono, Mono-lingual; Multi, Multi-lingual; Cross, Cross-lingual.

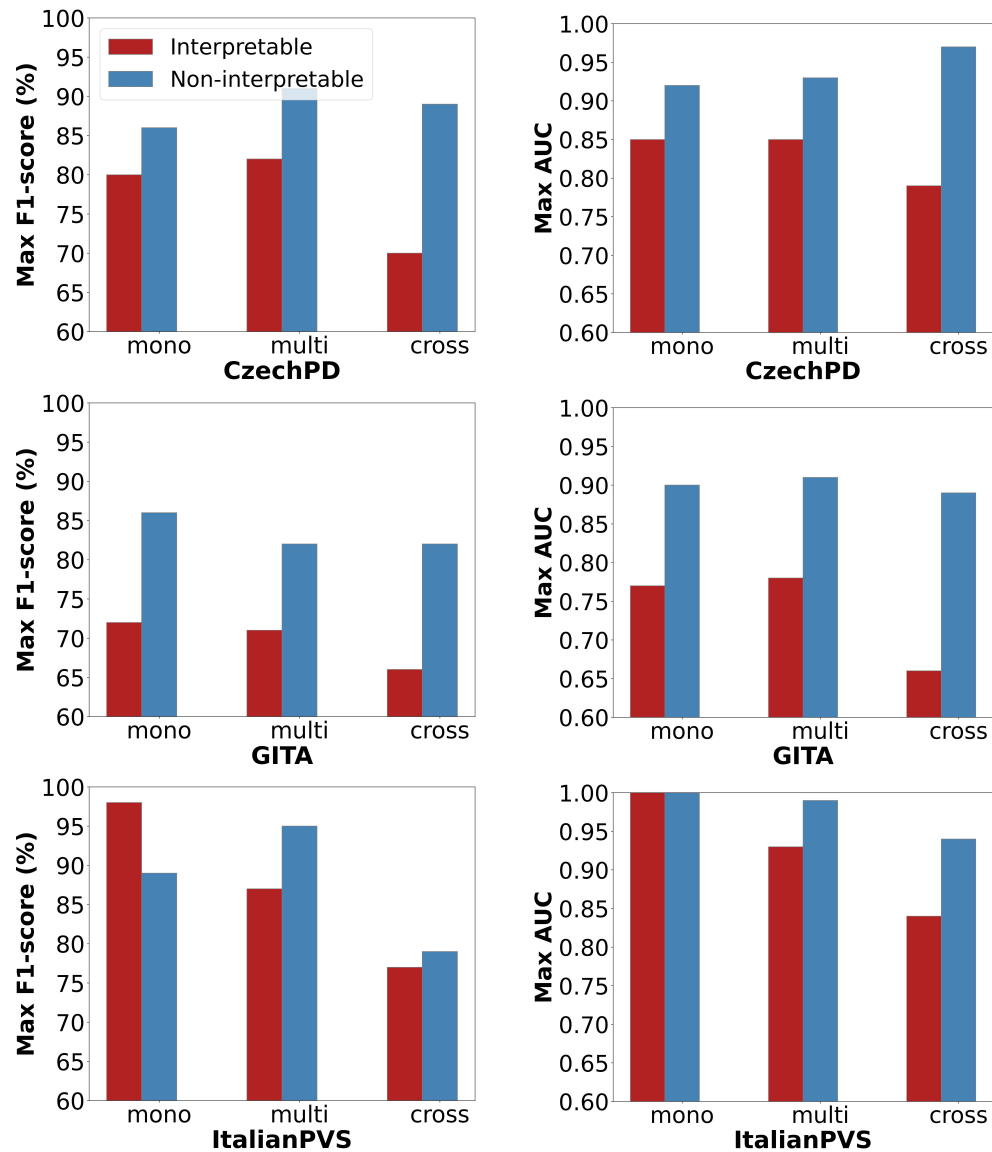


Figure 10: Bar plots describing the best F1-scores (left panel) and AUC (right panel) across tasks using IFMs (in red) and NIFMs (in blue), respectively. For each evaluation metric, mono-lingual, multi-lingual, and cross-lingual experimental results on CzechPD, GITA, and ItalianPVS are reported. Abbreviations: Mono, Mono-lingual; Multi, Multi-lingual; Cross, Cross-lingual.

universal paralinguistic representations provided by TRILLsson allowed reaching better performances compared to x-vectors and other non-interpretable representations. In a previous study, Vásquez-Correa et al. [27] increased the AUC on the test set of GermanPD from 0.68 to 0.82 by adding GITA in the training set, and the test AUC on GITA from 0.78 to 0.82 by adding Czech data in the training set. Similarly, our TRILLsson-based models increased the AUC on the test set of GermanPD (RP task) from 0.83 to 0.88 and that on GITA (SS task) from 0.84 to 0.91 in the multi-lingual scenario. Altogether, the results of multi-lingual experiments confirmed some level of language robustness of all the representations adopted.

Cross-lingual. In cross-lingual experiments, performance significantly varied depending on the target language considered in the experiments. For IFMs, the mean of best F1-scores across each language was 71%, and that for AUC was 0.76. For NIFMs, the mean of best F1-scores across each language was 79%, and that for AUC was 0.91. Even though results achieved using interpretable features were lower than those reported using non-interpretable ones, our IFMs reported an improvement over previous IFMs reported in the literature that adopted a similar training scheme (i.e., leave-one-language-out). Namely, our best IFMs on CzechPD and GITA outperformed those of Kovac et al. [42] by 12% in terms of ACC. Our models reported higher SEN and SPE by approximately 10% for American English and 5% higher for ItalianPVS than those reported by Kovac et al. [41].

For both IFMs and NIFMs, we observed a performance improvement ≥ 0.05 in F1-score and AUC with respect to mono-lingual experiments in only a few data sets (i.e., NLS for IFMs and HuBERT-based models, and CzechPD for TRILLsson based models). In most cases, classifying subjects from a language group not included in the training set led to a significant decrease in the classification results, as shown in previous works [41, 42, 40]. In addition, not seeing the test language in the training set might have contributed to non-optimal data standardization and shifted distributions of classifier decision scores, making F1-scores unstable, especially for NIFMs.

6. Additional Remarks

In this section, we analyze the limitations observed in the present work. The data sets adopted differ in size and case severity. Thus, in multi-lingual and cross-lingual experiments, the training and testing sets might not be

severity-matched. The time since the last medication, as well as the peak-dose duration, may impact performance. In some studies, participants with PD received medication before starting the recording session, which can result in better speech and language performances. In contrast, they did not receive any medication in other data sets (e.g., CzechPD). Furthermore, even though we analyzed three different types of tasks (i.e., TDU, RP, SS), only some data sets contain all of them. This fact limits the generalizability of our results and represents a limitation in multi-lingual and cross-lingual experiments. In addition, even though we performed the experiments task-wise, comparing the predictive capabilities of models based on features extracted from the same type of tasks, there could be differences occurring between variants of the same task. These differences can influence the feature values and make the comparison between languages biased. More generally, if a data set has relatively more complex tasks than others in terms of cognitive load or tasks' length, this fact might affect the features extracted and, in turn, the classification results. Finally, even though the same machine learning pipeline has been followed to perform the experiments using interpretable and non-interpretable features, we are not using the same classifiers for the two types of representations. This fact could have affected the models' performances as well. On one hand, classifiers like SVM, random forest, and bagging are used with low-dimensional data. On the other, PCA and PLDA techniques are typically employed with speech embeddings because they are better suited for high-dimensional data and can provide better generalization performance [72].

7. Conclusions and Future Work

The proposed study presents a systematic comparison between interpretable and non-interpretable speech-based representations for the automatic detection of PD. Six data sets containing speech recordings from different languages were used, which allows comparison in mono-lingual, multi-lingual, and cross-lingual experiments. The set of interpretable features encompassed prosodic descriptors (e.g., pitch, loudness variation, and speech pauses), linguistic descriptors (e.g., frequency of occurrence of different POS and syntactic complexity), and cognitive descriptors (e.g., regularity of speech rhythm and the number of correct IU). The set of non-interpretable features included x-vectors, TRILLsson, Wav2Vec 2.0., and HuBERT speech representations, with TRILLsson and HuBERT being applied to PD detection for the first

time. Based on the experimental results, we observed that:

1. In mono-lingual experiments, where classifiers were trained and tested on each data set separately, non-interpretable representations outperformed interpretable ones on average by $\sim 4\%$ and 0.04 considering F1-score and AUC, respectively. In this regard, HuBERT, Wav2Vec 2.0., and TRILLsson provided better and much more stable results compared to x-vectors.
2. In multi-lingual experiments, where classifiers were trained on all languages and tested on each language individually, NIFMs performed better than IFMs by $\sim 7\%$ and 0.07 considering F1-score and AUC, respectively, with Wav2Vec 2.0. and TRILLsson reporting the best performances. Both approaches reported a performance improvement ≥ 0.05 with respect to mono-lingual results in some tasks across almost all languages. This suggests that using more data, even when it comes from other languages, helps improve classification results. This phenomenon can be motivated by the fact that there are common patterns in PD-related dysarthria across languages that can be leveraged to train more robust models.
3. In cross-lingual experiments, where classifiers were trained on all languages but the target test language, NIFMs outperformed IFMs by $\sim 5.8\%$ and 0.14 in terms of F1-score and AUC, respectively, with TRILLsson reporting the best performance. A performance improvement ≥ 0.05 in AUC with respect to mono-lingual results was observed in only a few data sets (i.e., NLS for IFMs and HuBERT-based models, and CzechPD for TRILLsson-based models).

Some more general considerations are worth mentioning. First, using TRILLsson, Wav2Vec 2.0., and HuBERT self-supervised representations reported better classification results than using x-vectors in mono-lingual and multi-lingual experiments. Using heavier pre-trained models that are more complex in architecture, such as TRILLsson 2~5 or larger Wave2Vec 2.0. and HuBERT models, might further increase the performance too. Second, in cross-lingual experiments, TRILLsson significantly outperformed x-vectors and reported a better performance compared to Wav2Vec 2.0. and HuBERT in terms of AUC but, in some cases, performed very poorly in terms of F1-score.

Overall, the performance of NIFMs was significantly better than that of IFMs, especially in cross-lingual scenarios, even though the difference in the

performance between IFMs and NIFMs was not always remarkable, as shown in some mono-lingual and multi-lingual experiments. Altogether, the results of these experiments did not confirm the findings reported in previous studies that suggested that providing a structured data set with a comprehensive representation of meaningful features can considerably enhance classification results and narrow the performance gap between IFMs and NIFMs [25, 45, 44, 98, 99, 100]. In the current work, paralinguistic representations from DNNs seem to deliver a more exhaustive characterization of the pathological speech of PD individuals. However, the performance of models based on these complex features can still be complemented with hand-crafted features. Hence, clinicians can leverage IFMs to have clear insights into the evolution and the possible deterioration of the spoken production of patients with PD, while NIFMs can be employed to achieve higher detection accuracy.

In future work, we intend to validate the experimental results obtained in this work, balancing the classes in terms of the number of subjects, age, gender, time of medication, PD disease severity, and specific phenotype. We also plan to explore the language robustness of a more comprehensive set of interpretable and non-interpretable speech-based representations to provide a more exhaustive characterization of PD and to experiment with new classification techniques. Finally, as individuals with Parkinson’s disease mimics conditions might be often misdiagnosed with PD, it is important to create a separate group when performing differential diagnosis. Altogether, both IFMs and NIFMs showed a satisfying generalization capability in multi-lingual and cross-lingual experiments. As such, after further validation in clinical trials, they might be used to deploy screening tools for the automatic assessment of speech of people with PD in different languages.

8. Abbreviations

PD, Parkinson’s Disease; HC, Healthy Control; DL, Deep Learning; ML, Machine Learning; CNN, Convolutional Neural Network; MFCC, Mel-Frequency Cepstral Coefficient; ASR, Automatic Speech Recognition; POS, Part of Speech; IU, Informational Unit; SVM, Support Vector Machines; KNN, K-Nearest Neighbors; RF, Random Forest; XGBoost, Extreme Gradient Boosting; BG, Bagging; PCA, Principal Components Analysis; PLDA, Probabilistic Linear Discriminant Analysis; EER, Equal Error Rate; NCV, Nested Cross-Validation; ROC, Receiver Operating Characteristic; AUC, Area under the Receiver Operating Characteristic curve; SS, Spontaneous Speech;

RP, Reading Passage; TDU, Text-Dependent Utterances; ACC, Accuracy; SEN, Sensitivity; SPE, Specificity; IM, Interpretable Feature-based Model; NIFM, Non-Interpretable Feature-based Model; Mono, Mono-lingual; Multi, Multi-lingual; Cross, Cross-lingual.

9. Conflict of Interest Statement

We have no conflicts of interest to disclose.

10. Author Contributions

AF contributed to conceptualization, data pre-processing, features extraction, machine learning, GitHub repository management, and article writing. YT contributed to conceptualization, feature extraction, machine learning, GitHub repository management, and article writing. LMV contributed to conceptualization, data collection, project supervision, and article writing. AB and ND contributed to data collection, conceptualization, project supervision, and manuscript revision. TT and JV contributed to conceptualization, project supervision, and manuscript revision. All authors contributed to the manuscript revision, read, and approved the submitted version.

11. Funding

This work was funded in part by the Richman Family Precision Medicine Center of Excellence – Venture Discovery Fund and Consolidated Anti-Aging Foundation.

12. Data Availability Statement

NLS was collected by the authors of this study. Data are protected by privacy and security law. The authors may share this data set with the public once the data collection is completed. This is allowed by the license and the agreement signed by participants. Neurovoz, GITA, GermanPD, and CzechPD are not publicly accessible. The authors of these data sets may or may not want to share their data with the public. ItalianPVS can be found at the following link: <https://ieee-dataport.org/open-access/italian-parkinsons-voice-and-speech>. Information for this data set is contained within the article [101]. The code to reproduce our experiments can be found at the following link: https://github.com/Neuro-Logical/speech/tree/main/Cross_Lingual_Evaluation.

13. Acknowledgements

None.

References

- [1] B. R. Haas, T. H. Stewart, J. Zhang, Premotor biomarkers for parkinson's disease-a promising direction of research, *Translational neurodegeneration* 1 (1) (2012) 1–11. doi:10.1186/2047-9158-1-11.
- [2] R. F. Pfeiffer, Z. K. Wszolek, M. Ebadi, *Parkinson's disease*, CRC Press, 2012. doi:10.1201/b12948.
- [3] K. A. Jellinger, Accuracy of clinical diagnosis of parkinson disease: A systematic review and meta-analysis, *Neurology* 87 (2016) 237 – 238.
- [4] A. J. Hughes, S. E. Daniel, Y. Ben-Shlomo, A. J. Lees, The accuracy of diagnosis of parkinsonian syndromes in a specialist movement disorder service, *Brain* 125 (4) (2002) 861–870. doi:10.1093/brain/awf080.
- [5] M. M. Hoehn, M. D. Yahr, et al., Parkinsonism: onset, progression, and mortality, *Neurology* 50 (2) (1998) 318–318.
- [6] M. Richards, K. Marder, L. Cote, R. Mayeux, Interrater reliability of the unified parkinson's disease rating scale motor examination, *Movement Disorders* 9 (1) (1994) 89–91.
- [7] A. Ginanneschi, F. Degl'Innocenti, S. Magnolfi, M. Maurello, L. Catarzi, P. Marini, L. Amaducci, Evaluation of parkinson's disease: reliability of three rating scales, *Neuroepidemiology* 7 (1) (1988) 38–41.
- [8] L. Hartelius, P. Svensson, Speech and swallowing symptoms associated with parkinson's disease and multiple sclerosis: a survey, *Folia phoniatrica et logopaedica* 46 (1) (1994) 9–17.
- [9] A. K. Ho, R. Ianse, C. Marigliani, J. L. Bradshaw, S. Gates, Speech impairment in a large sample of patients with parkinson's disease, *Behavioural neurology* 11 (3) (1998) 131–137.
- [10] D. Theodoros, *Speech disorder in parkinson disease, Communication and swallowing in Parkinson disease* (2011) 51–88.

- [11] J. Kandl, J. Moore, Parkinson disease, *J. Sing* 78 (2022) 609–612.
- [12] B. Harel, M. Cannizzaro, P. J. Snyder, Variability in fundamental frequency during speech in prodromal and incipient parkinson’s disease: A longitudinal case study, *Brain and cognition* 56 (1) (2004) 24–29. doi:10.1016/j.bandc.2004.05.002.
- [13] S. Skodda, W. Grönheit, U. Schlegel, Intonation and speech rate in parkinson’s disease: General and dynamic aspects and responsiveness to levodopa admission, *Journal of Voice* 25 (4) (2011) e199–e205. doi:10.1016/j.jvoice.2010.04.007.
- [14] B. Walsh, A. Smith, Basic parameters of articulatory movements and acoustics in individuals with parkinson’s disease, *Movement Disorders* 27 (7) (2012) 843–850. doi:10.1002/mds.24888.
- [15] J. Jiménez-Monsalve, J. C. Vásquez-Correa, J. R. Orozco-Aroyave, P. Gomez-Vilda, Phonation and articulation analyses in laryngeal pathologies, cleft lip and palate, and parkinson’s disease, in: *International Work-Conference on the Interplay Between Natural and Artificial Computation*, Springer, 2017, pp. 424–434.
- [16] V. Uloza, V. Saferis, I. Uloziene, Perceptual and acoustic assessment of voice pathology and the efficacy of endolaryngeal phonomicrosurgery, *Journal of Voice* 19 (1) (2005) 138–145.
- [17] S. Sapir, C. Fox, J. Spielman, L. Ramig, Acoustic metrics of vowel articulation in parkinson’s disease: Vowel space area (vsa) vs. vowel articulation index (vai), *Acoustic Metrics of Vowel Articulation in Parkinson’s Disease: Vowel Space Area (VSA) vs. Vowel Articulation Index (VAI)* (2011) 173–175doi:DOI:10.1400/171551.
- [18] A. E. Reif, A. M. Goberman, Linguistic features of dysfluencies in parkinson disease, *Journal of Fluency Disorders* 70 (2021) 105845. doi:<https://doi.org/10.1016/j.jfludis.2021.105845>. URL <https://www.sciencedirect.com/science/article/pii/S0094730X21000243>
- [19] D. Van Lancker Sidtis, K. Cameron, J. J. Sidtis, Dramatic effects of speech task on motor and linguistic planning in severely dysfluent

- parkinsonian speech, *Clinical linguistics & phonetics* 26 (8) (2012) 695–711. doi:10.3109/02699206.2012.696307.
- [20] D. Van Lancker Sidtis, J. Choi, A. Alken, J. J. Sidtis, Formulaic language in parkinson’s disease and alzheimer’s disease: Complementary effects of subcortical and cortical dysfunction, *Journal of Speech, Language, and Hearing Research* 58 (5) (2015) 1493–1507. doi:10.1044/2015_JSLHR-L-14-0341.
- [21] J. Ruzs, R. Cmejla, H. Růžicková, J. Klempíř, V. Majerová, J. Picmausová, J. Roth, E. Růžicka, Acoustic assessment of voice and speech disorders in parkinson’s disease through quick vocal test, *Movement Disorders* 26 (10) (2011) 1951–1952. doi:10.1002/mds.23680.
- [22] B. E. Sakar, M. E. Isenkul, C. O. Sakar, A. Sertbas, F. Gurgun, S. Delil, H. Apaydin, O. Kursun, Collection and analysis of a parkinson speech dataset with multiple types of sound recordings, *IEEE Journal of Biomedical and Health Informatics* 17 (4) (2013) 828–834. doi:10.1109/JBHI.2013.2245674.
- [23] J. Ruzs, R. Cmejla, T. Tykalova, H. Ruzickova, J. Klempir, V. Majerova, J. Picmausova, J. Roth, E. Ruzicka, Imprecise vowel articulation as a potential early marker of parkinson’s disease: Effect of speaking task, *The Journal of the Acoustical Society of America* 134 (3) (2013) 2171–2181. doi:10.1121/1.4816541.
- [24] B. Erdogdu Sakar, G. Serbes, C. O. Sakar, Analyzing the effectiveness of vocal features in early telediagnosis of parkinson’s disease, *PloS one* 12 (8) (2017) e0182428. doi:10.1371/journal.pone.0182428.
- [25] C. Rudin, Stop explaining black box machine learning models for high stakes decisions and use interpretable models instead, *Nature Machine Intelligence* 1 (5) (2019) 206–215. doi:10.1038/s42256-019-0048-x.
- [26] J. C. Vásquez-Correa, J. R. Orozco-Arroyave, E. Nöth, Convolutional neural network to model articulation impairments in patients with parkinson’s disease., in: *INTERSPEECH*, Stockholm, 2017, pp. 314–318. doi:10.1007/978-3-319-50478-0_19.
- [27] J. C. Vásquez-Correa, C. D. Rios-Urrego, T. Arias-Vergara, M. Schuster, J. Ruzs, E. Nöth, J. R. Orozco-Arroyave, Transfer learning helps to

- improve the accuracy to classify patients with different speech disorders in different languages, *Pattern Recognition Letters* 150 (2021) 272–279. doi:10.1016/j.patrec.2021.04.011.
- [28] P. Janbakhshi, I. Kodrasi, Supervised speech representation learning for parkinson’s disease classification, in: *ITG Conference on Speech Communication*, 2021, pp. 1–5. doi:10.48550/ARXIV.2106.00531.
- [29] G. An, D. G. Brizan, M. Ma, M. Morales, A. R. Syed, A. Rosenberg, Automatic recognition of unified parkinson’s disease rating from speech with acoustic, i-vector and phonotactic features, in: *Sixteenth Annual Conference of the International Speech Communication Association*, 2015, pp. 508–512. doi:10.1109/SPED.2019.8906556.
- [30] L. Moro-Velazquez, J. A. Gómez-García, J. I. Godino-Llorente, J. Villalba, J. R. Orozco-Arroyave, N. Dehak, Analysis of speaker recognition methodologies and the influence of kinetic changes to automatically detect parkinson’s disease, *Applied Soft Computing* 62 (2018) 649–666.
- [31] L. Moro-Velazquez, J. Villalba, N. Dehak, Using x-vectors to automatically detect parkinson’s disease from speech, in: *ICASSP 2020-2020 IEEE International Conference on Acoustics, Speech and Signal Processing (ICASSP)*, IEEE, 2020, pp. 1155–1159. doi:10.1109/ICASSP40776.2020.9053770.
- [32] L. Jeancolas, D. Petrovska-Delacrétaz, G. Mangone, B.-E. Benkelfat, J.-C. Corvol, M. Vidailhet, S. Lehericy, H. Benali, X-vectors: New quantitative biomarkers for early parkinson’s disease detection from speech, *Frontiers in Neuroinformatics* 15 (2021) 578369. doi:10.3389/fninf.2021.578369.
- [33] T. Araújo, G. Aresta, E. Castro, J. Rouco, P. Aguiar, C. Eloy, A. Polónia, A. Campilho, Classification of breast cancer histology images using convolutional neural networks, *PloS one* 12 (6) (2017) e0177544.
- [34] S. Vieira, W. H. Pinaya, A. Mechelli, Using deep learning to investigate the neuroimaging correlates of psychiatric and neurological disorders: Methods and applications, *Neuroscience & Biobehavioral Reviews* 74 (2017) 58–75.

- [35] S. Aslani, J. Jacob, Utilisation of deep learning for covid-19 diagnosis, *Clinical Radiology* 78 (2) (2023) 150–157.
- [36] K. R. Varshney, H. Alemzadeh, On the safety of machine learning: Cyber-physical systems, decision sciences, and data products, *Big data* 5 (3) (2017) 246–255. doi:10.48550/arXiv.1610.01256.
- [37] H. Hazan, D. Hilu, L. Manevitz, L. O. Ramig, S. Sapir, Early diagnosis of parkinson’s disease via machine learning on speech data, in: 2012 IEEE 27th Convention of Electrical and Electronics Engineers in Israel, IEEE, 2012, pp. 1–4. doi:10.1109/EEEI.2012.6377065.
- [38] J. R. Orozco-Arroyave, J. D. Arias-Londoño, J. F. Vargas-Bonilla, M. C. Gonzalez-Rátiva, E. Nöth, New spanish speech corpus database for the analysis of people suffering from parkinson’s disease, in: Proceedings of the Ninth International Conference on Language Resources and Evaluation (LREC’14), 2014, pp. 342–347.
- [39] L. Moro-Velazquez, J. A. Gomez-Garcia, J. I. Godino-Llorente, F. Grandas-Perez, S. Shattuck-Hufnagel, V. Yagüe-Jimenez, N. Dehak, Phonetic relevance and phonemic grouping of speech in the automatic detection of parkinson’s disease, *Scientific reports* 9 (1) (2019) 1–16. doi:10.1038/s41598-019-55271-y.
- [40] J. C. Vásquez-Correa, T. Arias-Vergara, C. D. Rios-Urrego, M. Schuster, J. Rusz, J. R. Orozco-Arroyave, E. Nöth, Convolutional neural networks and a transfer learning strategy to classify parkinson’s disease from speech in three different languages, in: Iberoamerican Congress on Pattern Recognition, Springer, 2019, pp. 697–706. doi:10.1007/978-3-030-33904-3_66.
- [41] D. Kovac, J. Mekyska, Z. Galaz, L. Brabenec, M. Kostalova, S. Z. Rapcsak, I. Rektorova, Multilingual analysis of speech and voice disorders in patients with parkinson’s disease, in: 2021 44th International Conference on Telecommunications and Signal Processing (TSP), IEEE, 2021, pp. 273–277. doi:10.1109/TSP52935.2021.9522597.
- [42] D. Kovac, J. Mekyska, V. Aharonson, P. Harar, Z. Galaz, S. Rapcsak, J. R. Orozco-Arroyave, L. Brabenec, I. Rektorova, Exploring language-independent digital speech biomarkers of hypokinetic dysarthria, *medRxiv* (2022). doi:10.1101/2022.10.24.22281459.

- [43] U. Fayyad, G. Piatetsky-Shapiro, P. Smyth, From data mining to knowledge discovery in databases, *AI magazine* 17 (3) (1996) 37–37.
- [44] D. Agrawal, P. Bernstein, E. Bertino, S. Davidson, U. Dayal, M. Franklin, J. Widom, Challenges and opportunities with big data: A white paper prepared for the computing community consortium committee of the computing research association, *Computing Research Association* (2012).
- [45] P. Chapman, J. Clinton, R. Kerber, T. Khabaza, T. Reinartz, C. Shearer, R. Wirth, et al., *Crisp-dm 1.0: Step-by-step data mining guide*, *SPSS inc* 9 (13) (2000) 1–73.
- [46] J. Shor, S. Venugopalan, Trillsson: Distilling universal paralinguistic speech representations (2022). doi:10.21437/interspeech.2022-118.
- [47] A. Baevski, H. Zhou, A. Mohamed, M. Auli, wav2vec 2.0: A framework for self-supervised learning of speech representations, *CoRR abs/2006.11477* (2020). arXiv:2006.11477, doi:10.48550/ARXIV.2006.11477.
- [48] W.-N. Hsu, B. Bolte, Y.-H. H. Tsai, K. Lakhotia, R. Salakhutdinov, A. Mohamed, Hubert: Self-supervised speech representation learning by masked prediction of hidden units, *IEEE/ACM Transactions on Audio, Speech, and Language Processing* 29 (2021) 3451–3460.
- [49] H. Goodglass, E. Kaplan, S. Weintraub, *BDAE: The Boston Diagnostic Aphasia Examination*, Lippincott Williams & Wilkins Philadelphia, PA, 2001.
- [50] C. Roth, *Boston Diagnostic Aphasia Examination*, Springer New York, New York, NY, 2011, pp. 428–430. doi:10.1007/978-0-387-79948-3_868.
URL https://doi.org/10.1007/978-0-387-79948-3_868
- [51] P. Riis, Thirty years of bioethics: the helsinki declaration 1964-2003, *New Review of Bioethics* 1 (1) (2003) 15–25. doi:10.1080/1740028032000131396.
- [52] A. Radford, J. W. Kim, T. Xu, G. Brockman, C. McLeavey, I. Sutskever, Robust speech recognition via large-scale weak supervision, *Tech.*

rep., Technical report, OpenAI, 2022. URL <https://cdn.openai.com/papers/whisper.pdf> (2022).

- [53] A. Favaro, S. Motley, Q. M. Samus, A. Butala, N. Dehak, E. S. Oh, L. Moro-Velazquez, Artificial intelligence tools to evaluate language and speech patterns in alzheimer’s disease, *Alzheimer’s & Dementia* 18 (S2) (2022) e064913. arXiv:<https://alz-journals.onlinelibrary.wiley.com/doi/pdf/10.1002/alz.064913>, doi:10.1002/alz.064913. URL <https://alz-journals.onlinelibrary.wiley.com/doi/abs/10.1002/alz.064913>
- [54] A. Favaro, C. Motley, T. Cao, M. Iglesias, A. Butala, E. S. Oh, R. D. Stevens, J. Villalba, N. Dehak, L. Moro-Velázquez, A multi-modal array of interpretable features to evaluate language and speech patterns in different neurological disorders, in: *2022 IEEE Spoken Language Technology Workshop (SLT)*, 2023, pp. 532–539. doi:10.1109/SLT54892.2023.10022435.
- [55] A. FAVARO, L. Moro-Velazquez, A. Butala, C. Motley, T. Cao, R. D. Stevens, J. Villalba, N. Dehak, Multilingual evaluation of interpretable biomarkers to represent language and speech patterns in parkinson’s disease, *Frontiers in Neurology* 14 (2023) 317.
- [56] J. R. Duffy, *Motor speech disorders: Substrates, differential diagnosis, & management*. St. Louis, Mosby (1995).
- [57] L. Moro-Velazquez, J. A. Gomez-Garcia, J. D. Arias-Londoño, N. Dehak, J. I. Godino-Llorente, Advances in parkinson’s disease detection and assessment using voice and speech: A review of the articulatory and phonatory aspects, *Biomedical Signal Processing and Control* 66 (2021) 102418. doi:10.1016/j.bspc.2021.102418.
- [58] A. Lowit, B. Brendel, C. Dobinson, P. Howell, An investigation into the influences of age, pathology and cognition on speech production, *Journal of Medical Speech-Language Pathology* 14 (2006) 253.
- [59] V. Hammen, K. Yorkston, D. Beukelman, Pausal and speech duration characteristics as a function of speaking rate in normal and dysarthric individuals, *Recent advances in clinical dysarthria*. Austin, TX: Pro-Ed (1989) 213–224.

- [60] E. J. Metter, W. R. Hanson, Clinical and acoustical variability in hypokinetic dysarthria, *Journal of communication disorders* 19 (5) (1986) 347–366. doi:10.1016/0021-9924(86)90026-2.
- [61] Y. Bocanegra, A. M. García, D. Pineda, O. Buriticá, A. Villegas, F. Lopera, D. Gómez, C. Gómez-Arias, J. F. Cardona, N. Trujillo, et al., Syntax, action verbs, action semantics, and object semantics in parkinson’s disease: Dissociability, progression, and executive influences, *Cortex* 69 (2015) 237–254. doi:10.1016/j.cortex.2015.05.022.
- [62] M. Cotelli, B. Borroni, R. Manenti, M. Zanetti, A. Arévalo, S. Cappa, A. Padovani, Action and object naming in parkinson’s disease without dementia, *European Journal of Neurology* 14 (6) (2007) 632–637. doi:10.1111/j.1468-1331.2007.01797.x.
- [63] M. C. Silveri, N. Ciccarelli, E. Baldonero, C. Piano, M. Zinno, F. Soleti, A. R. Bentivoglio, A. Albanese, A. Daniele, Effects of stimulation of the subthalamic nucleus on naming and reading nouns and verbs in parkinson’s disease, *Neuropsychologia* 50 (8) (2012) 1980–1989. doi:10.1016/j.neuropsychologia.2012.04.023.
- [64] M. Späth, I. Aichert, A. O. Ceballos-Baumann, E. Wagner-Sonntag, N. Miller, W. Ziegler, Entraining with another person’s speech rhythm: Evidence from healthy speakers and individuals with parkinson’s disease, *Clinical linguistics & phonetics* 30 (1) (2016) 68–85. doi:10.3109/02699206.2015.1115129.
- [65] S. Skodda, U. Schlegel, Speech rate and rhythm in parkinson’s disease, *Movement disorders: official journal of the Movement Disorder Society* 23 (7) (2008) 985–992. doi:10.1002/mds.21996.
- [66] M. S. Troche, L. J. Altmann, Sentence production in parkinson disease: Effects of conceptual and task complexity, *Applied Psycholinguistics* 33 (2) (2012) 225–251.
- [67] J. Illes, E. Metter, W. Hanson, S. Iritani, Language production in parkinson’s disease: Acoustic and linguistic considerations, *Brain and language* 33 (1) (1988) 146–160. doi:10.1016/0093-934x(88)90059-4.

- [68] E. Herrera, J. Rodríguez-Ferreiro, F. Cuetos, The effect of motion content in action naming by parkinson’s disease patients, *Cortex* 48 (7) (2012) 900–904. doi:10.1016/j.cortex.2010.12.007.
- [69] L. E. Nicholas, R. H. Brookshire, A system for quantifying the informativeness and efficiency of the connected speech of adults with aphasia, *Journal of Speech, Language, and Hearing Research* 36 (2) (1993) 338–350. doi:10.1044/jshr.3602.338.
- [70] P. S. Myers, Profiles of communication deficits in patients with right cerebral hemisphere damage: Implications for diagnosis and treatment, in: *Clinical Aphasiology: Proceedings of the Conference 1979*, BRK Publishers, 1979, pp. 38–46. doi:10.1080/02687030500331585.
- [71] K. M. Yorkston, D. R. Beukelman, An analysis of connected speech samples of aphasic and normal speakers, *Journal of speech and hearing disorders* 45 (1) (1980) 27–36. doi:10.1044/jshd.4501.27.
- [72] D. Snyder, D. Garcia-Romero, G. Sell, D. Povey, S. Khudanpur, X-vectors: Robust dnn embeddings for speaker recognition, in: *2018 IEEE international conference on acoustics, speech and signal processing (ICASSP)*, IEEE, 2018, pp. 5329–5333.
- [73] D. Snyder, D. Garcia-Romero, A. McCree, G. Sell, D. Povey, S. Khudanpur, Spoken Language Recognition using X-vectors, in: *Proc. The Speaker and Language Recognition Workshop (Odyssey 2018)*, 2018, pp. 105–111. doi:10.21437/Odyssey.2018-15.
- [74] R. Pappagari, T. Wang, J. Villalba, N. Chen, N. Dehak, x-vectors meet emotions: A study on dependencies between emotion and speaker recognition, in: *ICASSP 2020-2020 IEEE International Conference on Acoustics, Speech and Signal Processing (ICASSP)*, IEEE, 2020, pp. 7169–7173.
- [75] A. Nagrani, J. S. Chung, A. Zisserman, Voxceleb: A large-scale speaker identification dataset, in: *Interspeech*, 2017, pp. 2616–2620. doi:10.21437/interspeech.2017-950.
- [76] M. Ravanelli, T. Parcollet, P. Plantinga, A. Rouhe, S. Cornell, L. Lugosch, C. Subakan, N. Dawalatabad, A. Heba, J. Zhong, J.-C. Chou,

- S.-L. Yeh, S.-W. Fu, C.-F. Liao, E. Rastorgueva, F. Grondin, W. Aris, H. Na, Y. Gao, R. D. Mori, Y. Bengio, SpeechBrain: A general-purpose speech toolkit, arXiv:2106.04624 (2021). [arXiv:2106.04624](https://arxiv.org/abs/2106.04624).
- [77] J. S. Chung, A. Nagrani, A. Zisserman, Voxceleb2: Deep speaker recognition, in: Interspeech, 2018, pp. 1086–1090. doi:10.21437/interspeech.2018-1929.
- [78] J. Shor, A. Jansen, W. Han, D. Park, Y. Zhang, Universal paralinguistic speech representations using self-supervised conformers, in: 2022 IEEE International Conference on Acoustics, Speech and Signal Processing (ICASSP), IEEE, 2022, pp. 3169–3173. doi:10.1109/icassp43922.2022.9747197.
- [79] J. F. Gemmeke, D. P. W. Ellis, D. Freedman, A. Jansen, W. Lawrence, R. C. Moore, M. Plakal, M. Ritter, Audio set: An ontology and human-labeled dataset for audio events, in: 2017 IEEE International Conference on Acoustics, Speech and Signal Processing (ICASSP), 2017, pp. 776–780. doi:10.1109/ICASSP.2017.7952261.
- [80] J. Kahn, M. Riviere, W. Zheng, E. Kharitonov, Q. Xu, P. Mazare, J. Karadayi, V. Liptchinsky, R. Collobert, C. Fuegen, T. Likhomanenko, G. Synnaeve, A. Joulin, A. Mohamed, E. Dupoux, Libri-light: A benchmark for ASR with limited or no supervision, in: 2020 IEEE International Conference on Acoustics, Speech and Signal Processing (ICASSP), IEEE, 2020, pp. 7669–7673. doi:10.1109/icassp40776.2020.9052942.
- [81] Y. Zhang, D. S. Park, W. Han, J. Qin, A. Gulati, J. Shor, A. Jansen, Y. Xu, Y. Huang, S. Wang, Z. Zhou, B. Li, M. Ma, W. Chan, J. Yu, Y. Wang, L. Cao, K. C. Sim, B. Ramabhadran, T. N. Sainath, F. Beaufays, Z. Chen, Q. V. Le, C.-C. Chiu, R. Pang, Y. Wu, BigSSL: Exploring the frontier of large-scale semi-supervised learning for automatic speech recognition, IEEE Journal of Selected Topics in Signal Processing 16 (6) (2022) 1519–1532. doi:10.1109/jstsp.2022.3182537.
- [82] J. Shor, A. Jansen, R. Maor, O. Lang, O. Tuval, F. de Chaumont Quitry, M. Tagliasacchi, I. Shavitt, D. Emanuel, Y. Haviv, Towards learning a universal non-semantic representation of speech, in: Interspeech 2020, ISCA, 2020, pp. 140–144. doi:10.21437/interspeech.2020-1242.

- [83] A. Baevski, Y. Zhou, A. Mohamed, M. Auli, wav2vec 2.0: A framework for self-supervised learning of speech representations, *Advances in neural information processing systems* 33 (2020) 12449–12460.
- [84] Y.-A. Chung, W.-N. Hsu, H. Tang, J. Glass, An unsupervised autoregressive model for speech representation learning, *arXiv preprint arXiv:1904.03240* (2019).
- [85] A. T. Liu, S.-w. Yang, P.-H. Chi, P.-c. Hsu, H.-y. Lee, Mockingjay: Unsupervised speech representation learning with deep bidirectional transformer encoders, in: *ICASSP 2020-2020 IEEE International Conference on Acoustics, Speech and Signal Processing (ICASSP)*, IEEE, 2020, pp. 6419–6423.
- [86] Z. Fan, M. Li, S. Zhou, B. Xu, Exploring wav2vec 2.0 on speaker verification and language identification, *arXiv preprint arXiv:2012.06185* (2020).
- [87] F. Braun, A. Erzigkeit, H. Lehfeld, T. Hillemaier, K. Riedhammer, S. P. Bayerl, Going beyond the cookie theft picture test: Detecting cognitive impairments using acoustic features, in: *Text, Speech, and Dialogue: 25th International Conference, TSD 2022, Brno, Czech Republic, September 6–9, 2022, Proceedings*, Springer, 2022, pp. 437–448.
- [88] S. P. Bayerl, D. Wagner, E. Nöth, K. Riedhammer, Detecting dysfluencies in stuttering therapy using wav2vec 2.0, *arXiv preprint arXiv:2204.03417* (2022).
- [89] D. Wagner, I. Baumann, F. Braun, S. P. Bayerl, E. Nöth, K. Riedhammer, T. Bocklet, Multi-class detection of pathological speech with latent features: How does it perform on unseen data?, *arXiv preprint arXiv:2210.15336* (2022).
- [90] S.-w. Yang, P.-H. Chi, Y.-S. Chuang, C.-I. J. Lai, K. Lakhota, Y. Y. Lin, A. T. Liu, J. Shi, X. Chang, G.-T. Lin, et al., Superb: Speech processing universal performance benchmark, *arXiv preprint arXiv:2105.01051* (2021).
- [91] V. Panayotov, G. Chen, D. Povey, S. Khudanpur, Librispeech: an asr corpus based on public domain audio books, in: *2015 IEEE international*

- conference on acoustics, speech and signal processing (ICASSP), IEEE, 2015, pp. 5206–5210.
- [92] A. Graves, S. Fernández, F. Gomez, J. Schmidhuber, Connectionist temporal classification: labelling unsegmented sequence data with recurrent neural networks, in: Proceedings of the 23rd international conference on Machine learning, 2006, pp. 369–376.
- [93] G. Hinton, O. Vinyals, J. Dean, Distilling the knowledge in a neural network, arXiv preprint arXiv:1503.02531 (2015).
- [94] H. Li, A. Kadav, I. Durdanovic, H. Samet, H. P. Graf, Pruning filters for efficient convnets, arXiv preprint arXiv:1608.08710 (2016).
- [95] J. Wu, C. Leng, Y. Wang, Q. Hu, J. Cheng, Quantized convolutional neural networks for mobile devices, in: Proceedings of the IEEE conference on computer vision and pattern recognition, 2016, pp. 4820–4828.
- [96] G. C. Cawley, N. L. Talbot, On over-fitting in model selection and subsequent selection bias in performance evaluation, *The Journal of Machine Learning Research* 11 (2010) 2079–2107. doi:10.5555/1756006.1859921.
- [97] I. Tsamardinos, A. Rakhshani, V. Lagani, Performance-estimation properties of cross-validation-based protocols with simultaneous hyperparameter optimization, *International Journal on Artificial Intelligence Tools* 24 (05) (2015) 1540023. doi:10.1142/S0218213015400230.
- [98] L. Obermann, S. Waack, Demonstrating non-inferiority of easy interpretable methods for insolvency prediction, *Expert Systems with Applications* 42 (23) (2015) 9117–9128.
- [99] R. K. Yadav, J. Lei, O.-C. Granmo, M. Goodwin, Robust interpretable text classification against spurious correlations using and-rules with negation, in: IJCAI International Joint Conference on Artificial Intelligence, International Joint Conferences on Artificial Intelligence, 2022.
- [100] J. Van Der Donckt, J. Van Der Donckt, E. Deprost, N. Vandenbussche, M. Rademaker, G. Vandewiele, S. Van Hoecke, Do not sleep on traditional machine learning: Simple and interpretable techniques are

competitive to deep learning for sleep scoring, *Biomedical Signal Processing and Control* 81 (2023) 104429.

- [101] G. Dimauro, V. Di Nicola, V. Bevilacqua, D. Caivano, F. Girardi, Assessment of speech intelligibility in parkinson's disease using a speech-to-text system, *IEEE Access* 5 (2017) 22199–22208. doi:10.1109/ACCESS.2017.2762475.