

1 **Supplementary material**

2 ***Exclusion criteria***

3 *All participants*

- 4 • Body mass index ≥ 35 kg/m²
- 5 • Diagnosed with severe asthma or daily use of inhaler, and/or treatment with oral
- 6 steroids
- 7 • Pregnancy/breastfeeding women
- 8 • Ongoing requirement of oxygen therapy
- 9 • Taking antihypertensive, nitrate, steroid or immunosuppressant medication or
- 10 medication
- 11 • Major illness e.g., cancer, inflammatory disease (including vasculitis) or receiving
- 12 palliative care
- 13 • History of organ transplantation or are candidates for organ transplantation at the
- 14 time of screening
- 15 • History of Chronic Fatigue Syndrome prior to COVID-19 infection
- 16 • Diagnosed cardiovascular disease (including current non-benign arrhythmia, chronic
- 17 heart failure)
- 18 • History of major psychiatric disorder including bipolar disorders, schizophrenia,
- 19 schizoaffective disorder, major depression.
- 20 • Diagnosis of structural lung disease (such as COPD or pulmonary fibrosis)
- 21 • Diagnosed renal disease
- 22 • Congenital or acquired neurological conditions (including dementia), language
- 23 disorders, repeated or chronic pain conditions (excluding menstrual pain and minor
- 24 sporadic headaches)
- 25 • Diabetes Mellitus
- 26 • Symptoms of febrile illness 2 weeks before experiment
- 27 • Excessive alcohol consumption (>28 units/week) or use of illicit drugs
- 28 • History of smoking within 2 months
- 29 • Surgery under general anaesthesia within 3 months
- 30 • History of stroke
- 31 • Coronary revascularisation

- 32 • Haemodialysis or peritoneal dialysis
- 33 • Participating in another study for an investigational medicinal product

34

35 **Supplementary results**

36 *Sit-to-stand test*

37 SBP did not change over time (main effect of time; $P=0.2254$) but DBP increased over time
38 from sitting to standing (main effect of time; $P=0.0484$), where DBP increased from rest (78
39 \pm mmHg) to 1 min (84 ± 10 mmHg, $P=0.0054$), 2 min (85 ± 12 mmHg, $P=0.0026$) and 3
40 mins (84 ± 13 mmHg, $P=0.0242$) of standing. There was no time*group interaction effect for
41 SBP or DBP indicating that both groups responded to sit-to-stand in a similar way. HR
42 increased from sitting to standing (main effect of time, $P<0.0001$). Unexpectedly, the
43 increase in HR from sit-to-stand was greater in the control group versus the long COVID
44 group (main Time*Group effect; $P=0.0258$, supplementary figure 2), where the control
45 group had an increase of 13 ± 9 beats/min at 2 mins of standing versus 4 ± 6 beats/min in
46 the long COVID group ($P=0.0429$). These data indicate that the prevalence of orthostatic
47 intolerance is similar to controls amongst this cohort of long COVID participants.

48

49 **Supplementary Tables**

50 **Supplementary table 1:** Medications prescribed to participants in the control and long
 51 COVID group. NB: none of these medications were taken on the study visits. Importantly,
 52 ivabradine was stopped 48 hours prior to study visits.

	Controls (n=14)	Long COVID (n=14)
Ivabradine (n)	0	4
Statins (n)	1	1
Selective serotonin reuptake inhibitors (n)	2	5
Tamsulosin (prostate hyperplasia, n)	1	1
Proton pump inhibitors (n)	1	3
Pain medication (prescribed for myalgia post COVID; pregabalin, n)	0	1
Bivaracetam (epilepsy, n)	1	0

53

54

55

56

57

58

59

60

61

62

63

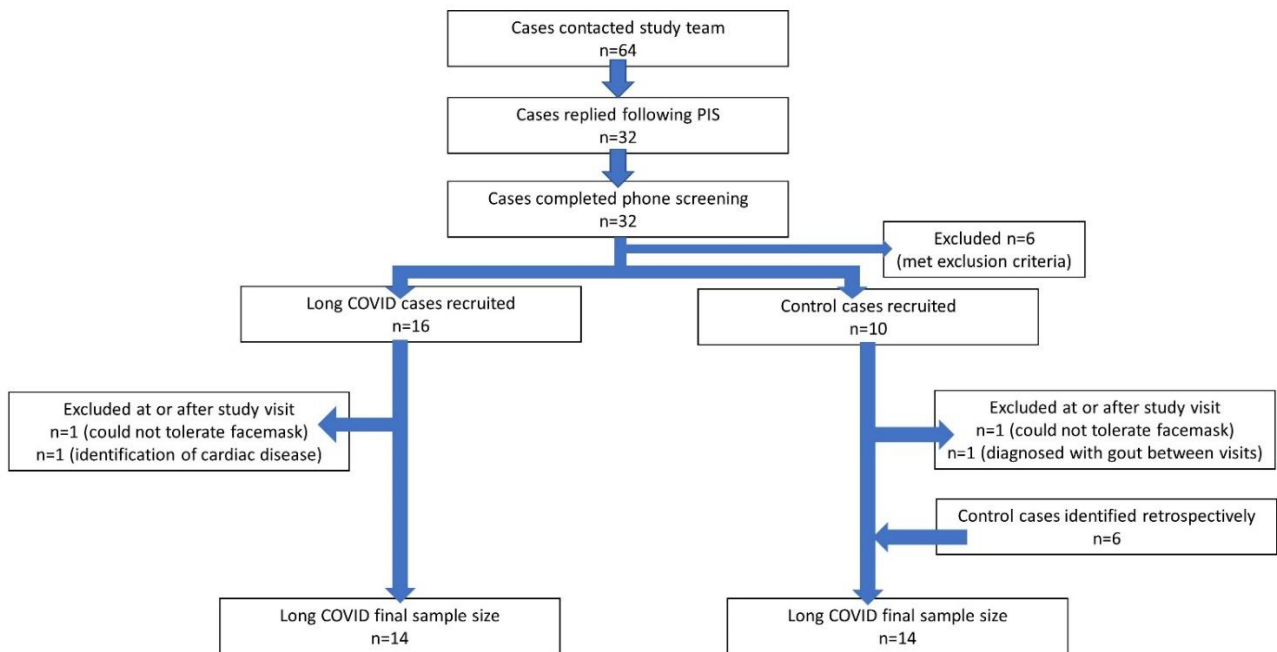
64 **Supplementary table 2:** Blood pressure and heart rate changes during the sit-to-stand
 65 test. Data are change from rest.

	Controls	Long COVID	P-value (mixed-effects ANOVA)
SBP (mmHg)			
Δ 1 min	1.2 ± 10.7	6.1 ± 7.9	Time: P=0.5204
Δ 2 min	1.1 ± 8.7	1.9 ± 8.4	Group: P=0.2836
Δ 3 min	-1.6 ± 7.3	3.1 ± 9.8	Time*Group: P=0.7346
DBP (mmHg)			
Δ 1 min	6.9 ± 7.7	5.4 ± 7.2	Time: P=0.1995
Δ 2 min	5.6 ± 9.1	6.5 ± 5.8	Group: P=0.6524
Δ 3 min	2.4 ± 8.8*	7.3 ± 7.3	Time*Group: P=0.0012
Heart rate (beats/min)			
Δ 1 min	10 ± 13	3 ± 6	Time: P=0.1631
Δ 2 min	13 ± 9	4 ± 6	Group: P=0.0698
Δ 3 min	10 ± 9	6 ± 7	Time*Group: P=0.1248

66 Mean ± standard deviation. Mixed model ANOVA showed no group or time effects for
 67 systolic blood pressure (SBP) or heart rate. There was an interaction effect for DBP where
 68 the change in DBP was smaller after 3 mins vs. the change at 1 min (*P=0.0035).

69

70 **Supplementary figures**

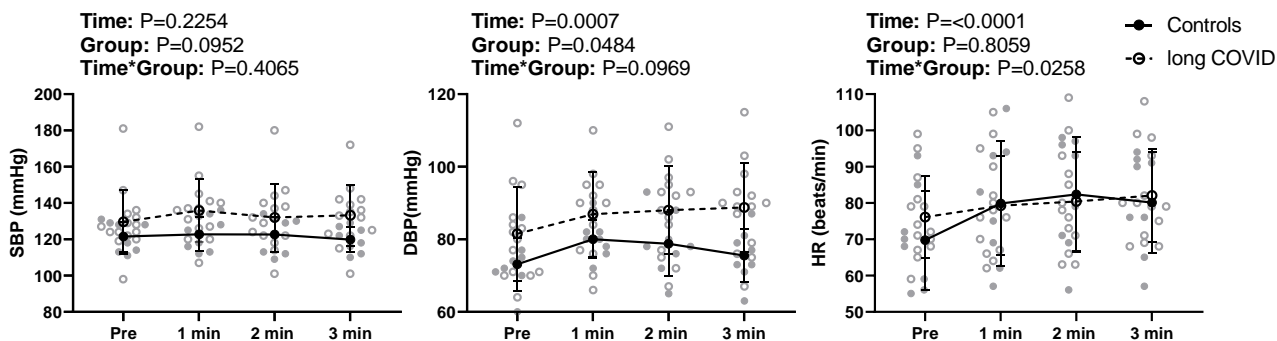


71

72 **Supplementary Figure 1:** Flow chart showing recruitment and excluded cases. Following
 73 the participant information sheet (PIS) mailout only 50% of individuals interested replied
 74 and completed phone screening.

75

76

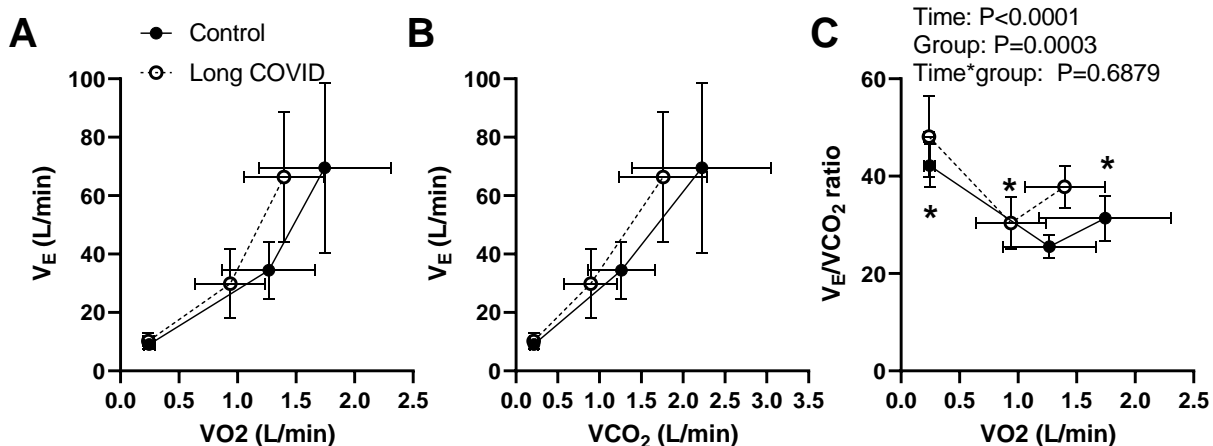


77

78 **Supplementary Figure 2:** Sit-to-stand blood pressures and heart rate response in the
 79 control and long COVID groups. There were no differences in the BP response to standing
 80 between the groups, however, the control group had a greater increase in HR during
 81 standing versus the long COVID group. One control and one long COVID participants had
 82 HR increases above 100 beats/min. SBP; systolic blood pressure, DBP; diastolic BP and
 83 HR; heart rate. Data are mean \pm standard deviation.

84

85

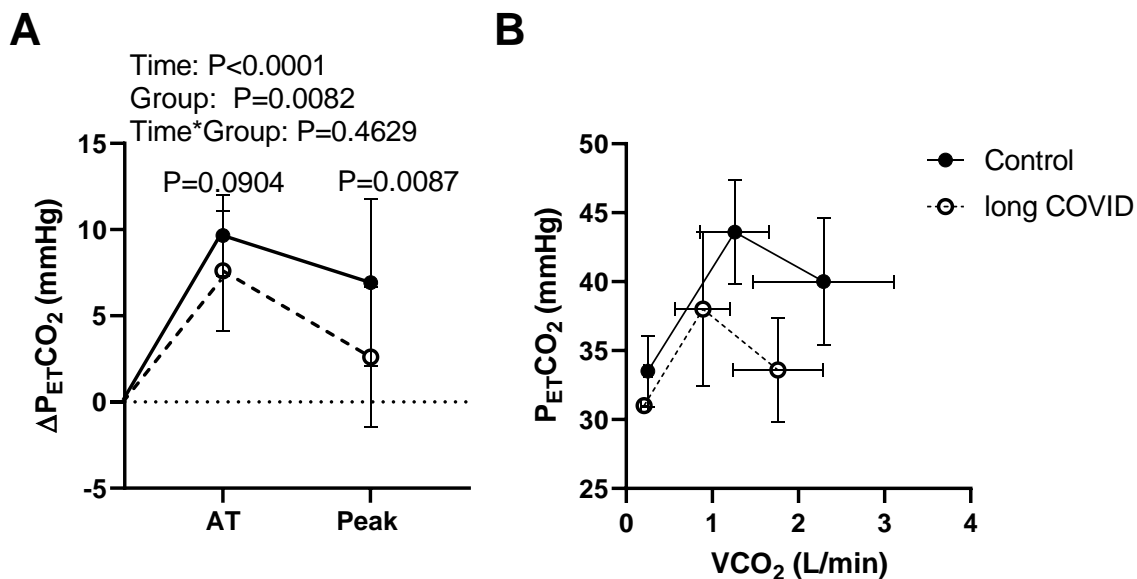


86

87 **Supplementary Figure 3:** Ventilation and heart rate during CPET plotted at 3 timepoints:
 88 rest, anaerobic threshold, and peak exercise. Panels A and B show the minute ventilation
 89 (V_E) plotted against the volume of oxygen consumed (VO_2) and the volume of CO_2 expired
 90 (VCO_2), respectively. Panel C shows the V_E/VCO_2 ratio versus the VO_2 . The mixed model
 91 ANOVA shows that V_E/VCO_2 ratio was higher at rest, anaerobic threshold, and peak
 92 exercise in the long COVID group. * indicates $P < 0.05$. Rest; $P = 0.0031$, anaerobic
 93 threshold; $P = 0.0477$ and peak exercise; $P = 0.0051$ (Bonferroni's multiple comparison test).
 94 Mean \pm standard deviation.

95

96

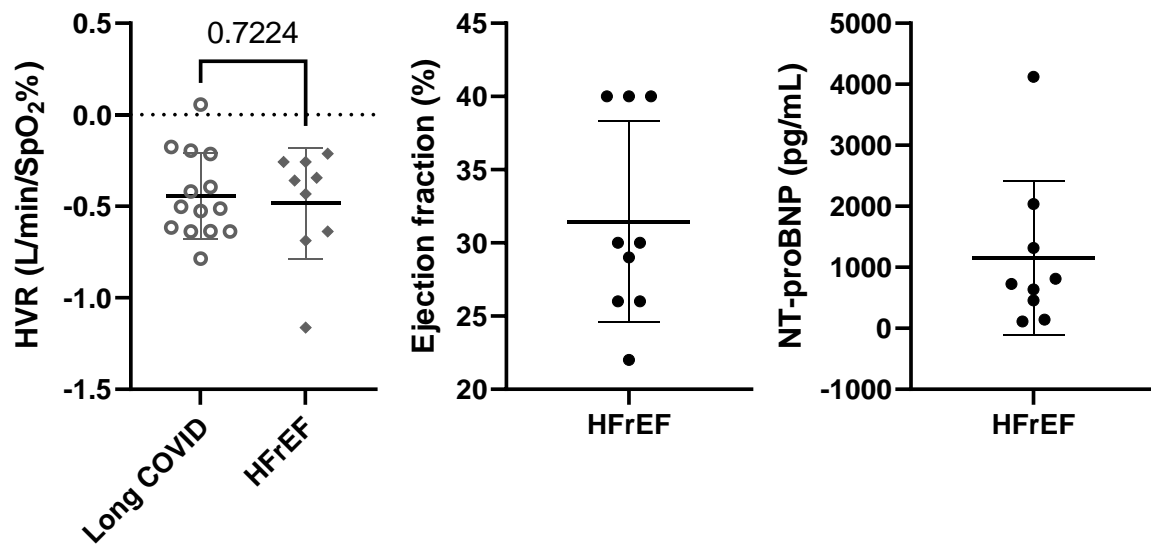


97

98 **Supplementary figure 4: A)** Absolute change in partial pressure of end tidal CO_2 ($P_{ET}CO_2$)
 99 from rest to anaerobic threshold (AT) and peak exercise in the control and the long COVID
 100 groups. The long COVID group had a similar increase in $P_{ET}CO_2$ at AT and peak exercise
 101 versus the control group. **B)** The $P_{ET}CO_2$ versus the VCO_2 plotted at three timepoints from
 102 left to right; at rest, at AT and peak exercise in the controls and long COVID group. Data
 103 are mean \pm standard deviation.

104

105



106

107 **Supplementary Figure 5:** The hypoxic ventilatory response in the long COVID participants
 108 (n=14) versus a group of participants with heart failure reduced ejection fraction (n=9)
 109 measured using the same methods, equipment, location, and study team. The heart failure
 110 with reduced ejection fraction (HFrEF) participants are taken from our study comparing
 111 carotid chemoreflex function in HFrEF versus heart failure with preserved ejection fraction.
 112 The NHS research ethics committee approval number is 18/SW/0241. The HVR was -
 113 0.44 ± 0.23 L/min/SpO₂% versus -0.48 ± 0.30 L/min/SpO₂%. Age; 69 ± 11 years, body mass
 114 index; 28.7 ± 5.8 kg/m². Panels B and C show the ejection fraction and NT-proBNP in the
 115 HFrEF participants. All participants were prescribed treatment for their heart failure (beta-
 116 blockers; n=8, angiotensin converting enzyme inhibitors or angiotensin receptor blocker;
 117 n=3, sacubitril with valsartan; n=4, aldosterone antagonist; n=6, ivabradine; n=1) which
 118 could impact the hypoxic ventilatory response.

119