

1 **Wastewater surveillance suggests unreported Mpox cases in a low-prevalence area**

2
3 Jeremiah Oghuan¹, Carlos Chavarria¹, Scout R. Vanderwal¹, Anna Gitter^{1,2}, Akpevwe Amanda
4 Ojaruega¹, Carlos Monserrat¹, Cici X. Bauer^{2,3,4}, Eric L. Brown¹, Sara Javornik Cregeen⁵,
5 Jennifer Deegan^{2,6}, Blake M. Hanson^{1,2}, Michael Tisza⁵, Hector I Ocaranza⁷, John Balliew⁸,
6 Anthony W. Maresso^{2,9}, Janelle Rios^{2,6}, Eric Boerwinkle^{1,2}, Kristina D. Mena^{1,2*}, Fuqing Wu^{1,2*}

7
8 1: Department of Epidemiology, Human Genetics and Environmental Sciences, School of Public
9 Health, University of Texas Health Science Center at Houston, TX, USA.

10 2: Texas Epidemic Public Health Institute (TEPHI), UTHealth Houston, Houston, TX, USA.

11 3: Department of Biostatistics and Data Science, School of Public Health, University of Texas
12 Health Science Center at Houston, TX, USA.

13 4: Center of Spatial-temporal Modeling of Applications in Population Sciences, Houston, TX,
14 USA.

15 5: The Alkek Center for Metagenomics and Microbiome Research, Department of Molecular
16 Virology and Microbiology, Baylor College of Medicine, Houston, TX, USA

17 6: School of Public Health, University of Texas Health Science Center at Houston, TX, USA.

18 7: City of El Paso Department of Public Health, El Paso, TX, USA.

19 8: El Paso Water Utility, El Paso, TX, United States

20 9: Department of Molecular Virology and Microbiology, Baylor College of Medicine, Houston,
21 TX, 77030, USA

22 Correspondence to: Kristina.D.Mena@uth.tmc.edu and fuqing.wu@uth.tmc.edu.

27 **Abstract**

28 Wastewater surveillance has emerged as a valuable tool for monitoring infectious disease
29 agents including SARS-CoV-2 and Mpox virus. However, detecting the Mpox virus in
30 wastewater is particularly challenging due to its relatively low prevalence in the community. In
31 this study, we detected Mpox virus in wastewater from a US-Mexico border city with a low
32 prevalence of Mpox disease during February and March 2023 using real-time PCR assays
33 targeting the C22L, F3L, and F8L genes. An increasing trend of viral concentration was
34 observed 1~2 weeks earlier than when the Mpox case was reported. Further sequencing and
35 epidemiological analysis provided supporting evidence for unreported Mpox infections in the
36 city. This study showcases a combined approach with multiple molecular assays for efficient
37 detection of the Mpox virus in wastewater in a low-prevalence area. The findings emphasize the
38 value of wastewater surveillance as a timely identification tool for infectious diseases in low-
39 prevalence areas, and the need for heightened vigilance to control the spread of infectious
40 diseases in such settings.

41

42 **Keywords:** Mpox virus, wastewater surveillance, low prevalence, early detection, City of El
43 Paso

44

45

46

47

48

49

50

51

52

53 Introduction

54 The Mpox (formerly referred to as monkeypox) outbreak in 2022 was a significant public health
55 event. The Mpox virus is a linear, double-stranded DNA virus in the genus *Orthopoxvirus*. The
56 Mpox virus (MPXV) was first isolated from a sick monkey in 1959¹ and the first human infection
57 was confirmed in 1970 in a 9-month-old newborn in the Democratic Republic of the Congo². As
58 a zoonotic disease, Mpox can be transmitted through intimate contact with respiratory
59 secretions, skin lesions of an infected person, and exposure to blood, body fluids, cutaneous or
60 mucosal lesions from infected animals³. The World Health Organization declared the rapid
61 spread of Mpox as a public health emergency of international concern on July 23, 2022. As of
62 May 2023, there have been more than 3,000 cases reported in Texas, and globally 86,000
63 confirmed cases in 110 countries, of which 103 had no historically reported Mpox infections⁴.

64 Wastewater surveillance is a promising approach for monitoring community outbreaks of
65 infectious diseases. Wastewater collates viral signals excreted by infected individuals across the
66 whole spectrum of disease symptoms ranging from asymptomatic to pre-symptomatic to
67 symptomatic⁵. This inclusiveness of all virus-carrying individuals in the sewershed enables us
68 to track the epidemic progression and better estimate the magnitude of infections^{6,7}. In addition,
69 wastewater surveillance can capture the shedding of viral particles prior to the onset of
70 symptoms providing an early warning of emerging outbreaks in the population⁸⁻¹⁰. For example,
71 Wolfe *et al.* reported MPXV DNA detection in multiple wastewater sampling sites in California
72 and some sites detected Mpox before identification of cases¹¹.

73 The Centers for Disease Control and Prevention (CDC) recommended two real-time
74 PCR assays for the detection of MPXV (C22L)¹² and non-variola orthopoxvirus (F8L)¹³ in June
75 2022. We previously confirmed that the sequence of primers and probes in the two assays
76 matches >99.4% and >99.1% of global Mpox genomes, respectively¹⁴. Two nucleotide
77 mismatches were also found in the primers of C22L assay, and mismatch-corrected primers
78 (C22L_m) showed an improved detection sensitivity with the 100% limit of detection of 2.7

79 copies of DNA per reaction. We also identified that an additional assay targeting MPXV F3L
80 gene¹⁵ has a high homology to >99.7% of Mpox genomes. In this study, we further
81 characterized their analytical sensitivity and limit of detection and used the three assays (F3L,
82 F8L, and C22L_m) to detect and track MPXV in wastewater samples collected from four
83 wastewater treatment plants serving the border city of El Paso, Texas during February and
84 March in 2023.

85

86 **Materials and Methods**

87 **Wastewater sample collection and processing.** Weekly, 24-h composite wastewater samples
88 were collected from the City of El Paso, Texas from February 20 to March 27, 2023. There are
89 four wastewater treatment facilities (abbreviated names: FH, HS, JT, and RB) serving a total of
90 751,982 individuals in the city. Samples were collected by El Paso Water Utility and shipped
91 overnight on ice to the laboratory at Houston for analysis. Samples were processed on the day
92 of receipt. Raw wastewater samples were separated into pellet and supernatant portions.
93 Specifically, 2 mL of raw wastewater was aliquoted and centrifuged to collect the pellet for DNA
94 extraction. For supernatants, 40 mL raw wastewater samples were vacuum filtered through a
95 0.22 µm polyether sulfone membrane to remove cell debris and solid materials. Supernatants
96 were used to concentrate viral particles as described below.

97

98 **Viral concentration and DNA extraction.** Viral enrichment was performed based on previous
99 methods^{8,16,17}. Briefly, 15 ml of filtrates were concentrated with 30 kDa Amicon Ultra Centrifugal
100 Filter (Sigma, Cat#: UFC9010) by centrifugation (3,900 rpm for 20 mins) to 150 -200 µl
101 subsequently used for DNA extraction using QIAamp DNA Mini Kit (Qiagen, Cat#: 51306). The
102 concentrates were resuspended with 200 µl buffer ATL for lysis. For pellet, ATL buffer was
103 directly added into the pellet for DNA extraction. Proteinase K was added into the sample to
104 facilitate the lysis followed by 2 h incubation at 56°C. DNA extraction was performed based on

105 the standard procedures provided by the kit and 100 µl nuclease-free H₂O was used to elute
106 DNA extracted from pellets and supernatants.
107
108 **Real-Time quantitative PCR (RT-qPCR).** The eluted DNA was used to test MPXV by probe-
109 based RT-qPCR. Briefly, PCR Multiplex Supermix (Bio-Rad, Cat #: 12010220) was mixed with
110 the primers, probe, and nuclease-free H₂O (VWR, Cat #: 10220-402) and then added to
111 respective wells of a 96-well PCR plate (Bio-Rad, Cat #: HSL9605). The final concentration for
112 the primers and probe is 750 nM and 375 nM, respectively. The reaction was run with the
113 following program: 95°C for 3 minutes for denature, followed by 48 cycles of denature (95 °C 3
114 s) and anneal/extend (60 °C 30 s). All primers, probes, and synthetic gene fragments for MPXV,
115 cowpox, and horsepox viruses were synthesized from Integrated DNA Technologies and their
116 sequence was provided in **Table S3**. Detailed procedures for the RT-qPCR can be found in our
117 previous work ¹⁴. The standard curves for F3L and F8L using different DNA templates were
118 generated by serial ten-fold dilutions of the synthesized gene fragment from 3.64~3.64e6
119 copies/µl. Each concentration has 6 technical replicates, and the mean value with standard
120 deviation is used for plotting. Two-fold serial dilutions were further used to determine the limit of
121 determination (LOD) for both assays with different DNA templates. In total, 16~22 replicates
122 were performed at critical concentrations. The cycle threshold (C_t) value was exported by the
123 built-in software with manual confirmation of a sigmoidal amplification curve.

124 For wastewater samples, we used the F3L, F8L, and C22L_m assays to test MPXV in
125 the supernatant and pellet of each sample. Three technical PCR replicates were performed for
126 each assay. Negative controls (i.e., adding the same volume of nuclease-free H₂O with no DNA
127 template) were included for each running with a total of 16~24 replicates. To minimize the
128 potential cross-contamination, we added the DNA for positive controls after all the other
129 samples were prepared and before the sealing of the 96-well plate, followed by centrifugation at

130 1,000 rpm for 1 min before the real-time PCR running. For all the real-time PCR results, Ct
131 value above 42 was considered negative.

132 Sanger sequencing was performed to verify the amplified sequence. Specifically, we
133 used the forward and reverse primers in the C22L_m assay (Table S3) to amplify wastewater
134 samples' DNA using Ultra II Q5 Master Mix (New England BioLabs, Cat#: M0544L). PCR
135 products were then sent to Eton Bioscience Inc. for Sanger sequencing using the C22L_m-
136 forward primer. The size of C22L_m amplicon is 90 bp.

137

138 **Sequence alignment and mismatch analysis.** Complete genome sequences were
139 downloaded from National Center for Biotechnology Information (NCBI) as fasta files, including
140 3,282 genomes for human Mpox viruses, 98 Cowpox viruses, 4 Horsepox viruses, 58 Smallpox
141 viruses, 112 Vaccinia viruses, and 6 Buffalopox viruses released in the NCBI database as of
142 February 13, 2023. The sequence was imported into R (version 4.1.3) and combined as the
143 genome database for analysis. We aligned each of the oligos (including forward primer, reverse
144 primer, and probe) sequences and their reverse complements to the database and computed
145 the percentage of genomes where the oligo sequences were a 100% match. For non-matching
146 oligos, sequences were extracted and aligned using SnapGene (<https://www.snapgene.com/>) to
147 identify the specific nucleotides that differ between the oligos and the genomic data. The major
148 types of sequence variation(s) are listed in Figure 1 and Table S2. These analyses were
149 performed with customized R scripts.

150

151 **Results**

152 We first evaluated the analytical sensitivity and limit of detection of F3L and F8L assays using
153 real-time quantitative PCR (RT-qPCR) with synthetic gene fragments covering corresponding
154 genomic regions of MPXV and other *orthopoxvirus* viruses (**Fig. 1**). By testing the F3L assay
155 using serial tenfold dilutions of MPXV DNA, we found that F3L detected MPXV DNA across 7-

156 log concentrations from $3.64\sim 3.64*10^6$ copies/ μ l with an amplification efficiency of 97.62% and
157 $R^2 > 0.999$ (**Fig. 1B and Table S1**). The limit of detection with 22 replicates shows that the F3L
158 assay is 100% sensitive to MPXV detection at 3.64 copies/ μ l (7.28 copies/reaction, **Fig. 1C**).
159 Sixteen replicates of controls with no DNA template are negative.

160 The F8L assay was designed for broad detection of viruses in the genus *orthopoxvirus*;
161 however, the homology between the sequence of primers/probe and species in the genus varies
162 (**Fig. 1A**). We therefore aligned the sequence of primers and probe of the F8L assay against 6
163 *orthopoxvirus* species including 3,282 genomes for human Mpox viruses, 98 cowpox viruses, 4
164 horsepox viruses, 58 smallpox viruses, 112 vaccinia viruses, and 6 buffalopox viruses released
165 in the NCBI database as of February 13, 2023. Overall, the F8L primers and probe have the
166 highest full match to MPXV genomes (99.8%) and have 1~3 nucleotide mismatches to most of
167 the genomes (52%~100%) in other species (**Table S2**), suggesting that the F8L assay may
168 have varied detection sensitivity to different *orthopoxvirus* species.

169 To determine how these sequence variations impact detection of orthopoxvirus, we
170 synthesized MPXV, cowpox, and horsepox virus gene fragments covering the F8L region.
171 Standard curves from serial 7-log dilutions show similar amplification efficiencies using MPXV
172 (89.49%), cowpox (88.40%), and horsepox DNA (88.39%) with $R^2 > 0.998$ (**Fig. 1B and Table**
173 **S1**). However, the analytical sensitivity ranges between 1.8 and 7.1 Ct among the three viral
174 genome fragments. The 100% of detection of the three viral DNA sequences varies from 9.1 to
175 36.44 copies/ μ l (**Fig. 1C**). In total, 24 no-template controls for the F8L assay are negative.
176 These results showed that the F8L assay is most sensitive in detecting this MPXV genome
177 fragment compared to cowpox and horsepox viruses.

178 Next, we tested the detection of MPXV in wastewater using F3L, F8L, and C22L_m
179 assays. Weekly wastewater samples were collected between February 20 and March 27, 2023
180 from four wastewater treatment facilities including FH, HS, JT, and RB, which together serve
181 about 751,982 individuals in El Paso ¹⁸. Raw wastewater samples were separated into

182 supernatant (filtrate) and pellet portions, which were individually tested by the three assays.
183 Positive MPXV signals were observed in the supernatant or pellet or both (**Fig. S1**). Sanger
184 sequencing of PCR products using FH and HS pellet samples on March 13 further confirmed
185 86% to 94% identity matches to the MPXV reference genomes (**Fig. S2**). The F3L assay
186 detected MPXV in 17/24 (70.8%) samples, C22L_m detected the virus in 14/24 (58.3%)
187 samples, and F8L in 3/24 (12.5%) samples (**Fig. 2A**). Eleven of 24 (52.4%) samples were
188 detected by more than one assay, and three samples were not detected by any of the three
189 assays. The HS sewershed had the highest F3L assay positivity frequency. Aggregating the
190 viral concentrations by sampling date, viral concentrations in the pellet were relatively higher
191 than in the supernatant (**Fig. 2B and Fig. S1**). Increased viral concentrations in wastewater
192 were observed from February 27, with a peak in the week of March 6.

193 Clinically, five Mpox cases were reported since August 2022, and the most recent case
194 in the city was found on March 11 (**Fig. 2C**). The time difference between wastewater peak time
195 and new case reporting dates highlights the feasibility and precedence of wastewater
196 surveillance for detecting new infections, also revealed by a recent study¹¹. Positive signals
197 were still observed in the four sewersheds after the case was identified and isolated (**Fig. S1**)
198 suggesting that there might be additional unreported Mpox cases. Nucleotide variations of the
199 C22L_m amplicons' sequence for samples collected from sewersheds FH and HS on March 13
200 (**Fig. S2**) supports the hypothesis. This is further supported by following findings: a) positive
201 signals were found on February 20, approximately three weeks before the latest case was
202 reported which exceeds the mean viral incubation period of 5.6 to 9.1 days^{19,20} and b) the
203 penultimate case was reported on October 8, 2022. Persistent viral shedding in patients has
204 been reported for up to 39 days in the literature^{21,22}, but has never been reported for over 4
205 months, suggesting that the signals in wastewater on February 20 may not be from shedding
206 from October 8 case. These analyses indicated the presence of unreported Mpox cases in the
207 city.

208

209 **Discussion**

210 Wastewater surveillance is being widely implemented as a complementary public health tool to
211 detect infectious pathogens including SARS-CoV-2 and Mpox virus^{11,23–25}. However, it is more
212 challenging to detect the Mpox virus in wastewater because of its relatively lower prevalence in
213 the community leading to lower viral concentrations. The presence of inhibitors in wastewater
214 samples further challenges the efficiency of molecular detection approaches. Using multiple
215 MPXV detection assays can partially address this challenge. Taking the C22L_m assay in HS
216 sewershed as an example, we did not detect MPXV DNA in either the supernatant or pellet for
217 samples collected on February 27 and March 20; however, other samples collected during this
218 time frame were positive. There are many potential reasons for the negative tests including low
219 viral DNA concentrations and PCR inhibitors present in wastewater. As such, results using the
220 F3L and F8L assays were crucial for cross-validation. Thus, using multiple assays targeting
221 different genomic sites of the virus can enhance detection accuracy, especially in areas with low
222 prevalence.

223 While Mpox cases continue to be reported globally, the percentage of asymptomatic and
224 or unreported MPXV infections remains unknown. Two recent studies found 75%²⁶ and 5%²⁷ of
225 asymptomatic infections among 4 and 284 Mpox cases by screening 224 and 583 individuals,
226 respectively. Although the range is large, both studies showed that the current number of Mpox
227 cases is underestimated, which is further supported by our wastewater results reported here.
228 The next important question that arises is how to effectively identify the specific locations of
229 these non-reported infections within the city. To address this, one potential approach is to
230 strategically sample wastewater from upstream communities, such as neighborhoods, housing
231 estates, and even individual buildings^{28–30}. Analyzing these upstream wastewater samples can
232 aid in pinpointing the locations with non-reported infections within the city, and facilitate targeted
233 public health interventions.

234 In summary, we detected MPXV using three distinct molecular assays in wastewater
235 samples collected from El Paso, Texas. Notably, we observed a progressive rise in viral
236 concentrations in the wastewater approximately 1-2 weeks prior to the reporting of a new clinical
237 case. The presence of viral signals in multiple sewersheds both before and after the
238 identification of the sole clinical case strongly suggests the existence of unreported Mpox virus
239 infections within the city during the sampling period. This study emphasizes the importance of
240 employing a combined approach that incorporates multiple well-established molecular assays to
241 improve the detection of Mpox virus DNA in wastewater, especially in regions with a low
242 prevalence of the disease.

243

244 **Declaration of Competing Interest**

245 The authors declare no competing interest.

246

247 **Code Availability**

248 All data and code produced in the present study are available upon reasonable request to the
249 authors.

250

251 **Acknowledgment**

252 We thank Teresa T. Alcalá and Xavier Soto at El Paso Water, and Camille J. Breaux and Malini
253 Udtha at UTHealth Houston for sample coordination, collection, and shipping. We are grateful to
254 Carolyn S. Wade, David W. Jackson, and Linda Bowen at UTHealth Houston for ordering
255 materials and administration. This work is supported by Faculty Startup funding from the Center
256 of Infectious Diseases at UTHealth, the UT system Rising STARs award, and the Texas Epidemic
257 Public Health Institute (TEPHI).

258

259 **Author Contribution**

260 Conceptualization: KDM, FW; Investigation: JO, FW; Methodology: FW; Visualization: JO, FW;
261 Supervision: KDM, FW; Funding acquisition, JR, EB, KDM, FW; Discussion: JO, CC, SRV, AG,
262 AAO, CM, CXB, ELB, SJC, JD, BMH, MT, HIO, JB, AWM, JR, EB, KDM, FW; Writing – original
263 draft: JO, FW; Writing – review & editing: JO, CC, SRV, AG, AAO, CM, CXB, ELB, SJC, JD,
264 BMH, MT, HIO, JB, AWM, JR, EB, KDM, FW.

265

266 **Ethical Approval Statement**

267 This article does not contain any studies involving animals or humans performed by any
268 authors.

269

270 **References**

- 271 1. Cho CT, Wenner HA. Monkeypox virus. *Bacteriol Rev* 1973;37(1):1–18.
- 272 2. Ladnyj ID, Ziegler P, Kima E. A human infection caused by monkeypox virus in Basankusu
273 Territory, Democratic Republic of the Congo. *Bull World Health Organ* 1972;46(5):593–7.
- 274 3. Peiró-Mestres A, Fuertes I, Camprubí-Ferrer D, et al. Frequent detection of monkeypox
275 virus DNA in saliva, semen, and other clinical samples from 12 patients, Barcelona, Spain,
276 May to June 2022. *Eurosurveillance* 2022;27(28):2200503.
- 277 4. CDC. 2022 Monkeypox Outbreak Global Map [Internet]. Centers for Disease Control and
278 Prevention. 2022 [cited 2022 Aug 9]; Available from:
279 <https://www.cdc.gov/poxvirus/monkeypox/lab-personnel/index.html>
- 280 5. Lee S, Kim T, Lee E, et al. Clinical Course and Molecular Viral Shedding Among
281 Asymptomatic and Symptomatic Patients With SARS-CoV-2 Infection in a Community
282 Treatment Center in the Republic of Korea. *JAMA Internal Medicine* 2020;180(11):1447–
283 52.

- 284 6. Hart OE, Halden RU. Computational analysis of SARS-CoV-2/COVID-19 surveillance by
285 wastewater-based epidemiology locally and globally: Feasibility, economy, opportunities
286 and challenges. *Science of The Total Environment* 2020;730:138875.
- 287 7. Phan T, Brozak S, Pell B, et al. A simple SEIR-V model to estimate COVID-19 prevalence
288 and predict SARS-CoV-2 transmission using wastewater-based surveillance data. *Science*
289 *of The Total Environment* 2023;857:159326.
- 290 8. Wu F, Xiao A, Zhang J, et al. SARS-CoV-2 RNA concentrations in wastewater foreshadow
291 dynamics and clinical presentation of new COVID-19 cases. *Science of The Total*
292 *Environment* 2022;805:150121.
- 293 9. Kumar M, Jiang G, Kumar Thakur A, et al. Lead time of early warning by wastewater
294 surveillance for COVID-19: Geographical variations and impacting factors. *Chemical*
295 *Engineering Journal* 2022;441:135936.
- 296 10. Peccia J, Zulli A, Brackney DE, et al. Measurement of SARS-CoV-2 RNA in wastewater
297 tracks community infection dynamics. *Nature Biotechnology* 2020;1–4.
- 298 11. Wolfe MK, Duong D, Hughes B, Chan-Herur V, White BJ, Boehm AB. Detection of
299 monkeypox viral DNA in a routine wastewater monitoring program [Internet]. 2022 [cited
300 2022 Aug 9];2022.07.25.22278043. Available from:
301 <https://www.medrxiv.org/content/10.1101/2022.07.25.22278043v1>
- 302 12. CDC. Test Procedure: Monkeypox virus Generic Real-Time PCR Test [Internet]. Centers for
303 Disease Control and Prevention. 2022 [cited 2022 Aug 9];Available from:
304 <https://www.cdc.gov/poxvirus/monkeypox/pdf/PCR-Diagnostic-Protocol-508.pdf>

- 305 13. CDC. Test Procedure: Non-variola Orthopoxvirus Generic Real-Time PCR Test [Internet].
306 2022; Available from: [https://www.cdc.gov/poxvirus/monkeypox/pdf/non-variola-](https://www.cdc.gov/poxvirus/monkeypox/pdf/non-variola-orthopoxvirus-generic-real-time-pcr-test.pdf)
307 [orthopoxvirus-generic-real-time-pcr-test.pdf](https://www.cdc.gov/poxvirus/monkeypox/pdf/non-variola-orthopoxvirus-generic-real-time-pcr-test.pdf)
- 308 14. Wu F, Oghuan J, Gitter A, Mena KD, Brown EL. Wide mismatches in the sequences of
309 primers and probes for monkeypox virus diagnostic assays. *Journal of Medical Virology*
310 2023;95(1):e28395.
- 311 15. Maksyutov RA, Gavrilova EV, Shchelkunov SN. Species-specific differentiation of variola,
312 monkeypox, and varicella-zoster viruses by multiplex real-time PCR assay. *J Virol Methods*
313 2016;236:215–20.
- 314 16. Wu F, Xiao A, Zhang J, et al. Wastewater surveillance of SARS-CoV-2 across 40 U.S.
315 states from February to June 2020. *Water Res* 2021;202:117400.
- 316 17. Xiao A, Wu F, Bushman M, et al. Metrics to relate COVID-19 wastewater data to clinical
317 testing dynamics. *medRxiv* 2021;2021.06.10.21258580.
- 318 18. Gitter A, Bauer C, Wu F, et al. Assessment of a SARS-CoV-2 wastewater monitoring
319 program in El Paso, Texas, from November 2020 to June 2022. *International Journal of*
320 *Environmental Health Research* 2023;0(0):1–11.
- 321 19. Madewell ZJ, Charniga K, Masters NB, et al. Serial Interval and Incubation Period Estimates
322 of Monkeypox Virus Infection in 12 Jurisdictions, United States, May-August 2022. *Emerg*
323 *Infect Dis* 2023;29(4):818–21.
- 324 20. Guzzetta G, Mammone A, Ferraro F, et al. Early Estimates of Monkeypox Incubation Period,
325 Generation Time, and Reproduction Number, Italy, May–June 2022. *Emerg Infect Dis*
326 2022;28(10):2078–81.

- 327 21. Lapa D, Carletti F, Mazzotta V, et al. Monkeypox virus isolation from a semen sample
328 collected in the early phase of infection in a patient with prolonged seminal viral shedding.
329 *Lancet Infect Dis* 2022;22(9):1267–9.
- 330 22. Adler H, Gould S, Hine P, et al. Clinical features and management of human monkeypox: a
331 retrospective observational study in the UK. *The Lancet Infectious Diseases*
332 2022;22(8):1153–62.
- 333 23. de Jonge EF, Peterse CM, Koelewijn JM, et al. The detection of monkeypox virus DNA in
334 wastewater samples in the Netherlands. *Sci Total Environ* 2022;852:158265.
- 335 24. La Rosa G, Mancini P, Veneri C, et al. Detection of Monkeypox Virus DNA in Airport
336 Wastewater, Rome, Italy. *Emerg Infect Dis* 2023;29(1):193–6.
- 337 25. Wurtzer S, Levert M, Dhenain E, et al. First Detection of Monkeypox Virus Genome in
338 Sewersheds in France: The Potential of Wastewater-Based Epidemiology for Monitoring
339 Emerging Disease. *Environ Sci Technol Lett* 2022;9(11):991–6.
- 340 26. De Baetselier I, Van Dijck C, Kenyon C, et al. Retrospective detection of asymptomatic
341 monkeypox virus infections among male sexual health clinic attendees in Belgium. *Nat*
342 *Med* 2022;28(11):2288–92.
- 343 27. Ferré VM, Bachelard A, Zaidi M, et al. Detection of Monkeypox Virus in Anorectal Swabs
344 From Asymptomatic Men Who Have Sex With Men in a Sexually Transmitted Infection
345 Screening Program in Paris, France. *Ann Intern Med* 2022;175(10):1491–2.
- 346 28. Rios G, Lacoux C, Leclercq V, et al. Monitoring SARS-CoV-2 variants alterations in Nice
347 neighborhoods by wastewater nanopore sequencing. *The Lancet Regional Health* –

348 Europe [Internet] 2021 [cited 2021 Sep 20];0(0). Available from:
349 [https://www.thelancet.com/journals/lanepi/article/PIIS2666-7762\(21\)00179-4/fulltext#%20](https://www.thelancet.com/journals/lanepi/article/PIIS2666-7762(21)00179-4/fulltext#%20)

350 29. Gibas C, Lambirth K, Mittal N, et al. Implementing building-level SARS-CoV-2 wastewater
351 surveillance on a university campus. *Science of The Total Environment* 2021;782:146749.

352 30. Harris-Lovett S, Nelson KL, Beamer P, et al. Wastewater Surveillance for SARS-CoV-2 on
353 College Campuses: Initial Efforts, Lessons Learned, and Research Needs. *Int J Environ*
354 *Res Public Health* 2021;18(9):4455.

355

356

357

358

359

360

361

362

363

364

365

366

367

368

369

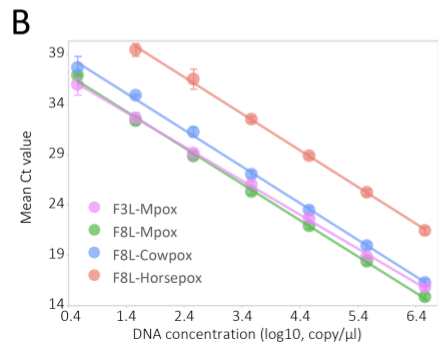
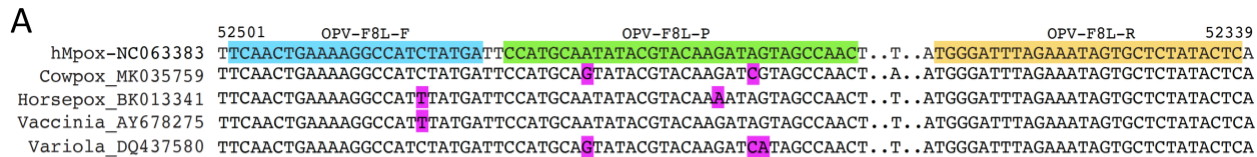
370

371

372 **Figures and figure legends**

373

374



C

The concentration of synthetic Mpx, cowpox and horsepox viruses' gene fragments for F3L and F8L (copies/μL)

	364.97	72.87	36.49	18.25	9.12	7.28	3.64	1.82	0.91	0
F3L-Mpx	100% (6/6)	n.a	100% (6/6)	n.a	n.a	n.a	100% (22/22)	81% (13/16)	81% (13/16)	0% (0/16)
F8L-Mpx	100% (6/6)	n.a	100% (6/6)	100% (16/16)	100% (16/16)	93.75% (15/16)	68.75% (11/16)	n.a	n.a	0% (0/16)
F8L-Cowpox	100% (6/6)	n.a	100% (6/6)	100% (16/16)	56.25% (9/16)	n.a	12.5% (2/16)	n.a	n.a	0% (0/24)
F8L-Horsepox	100% (6/6)	100% (16/16)	100% (19/19)	93.75% (15/16)	6.25% (1/16)	n.a	0% (0/16)	n.a	n.a	0% (0/24)

375

376

377 **Figure 1. Specificity, sensitivity, and limit of detection for the F3L and F8L assays. (A)**

378 Alignment of F8L forward primer (highlighted cyan), probe (green), and reverse primer (yellow)
 379 against MPXV, cowpox viruses, horsepox, vaccinia virus, and smallpox (variola) virus genomes.

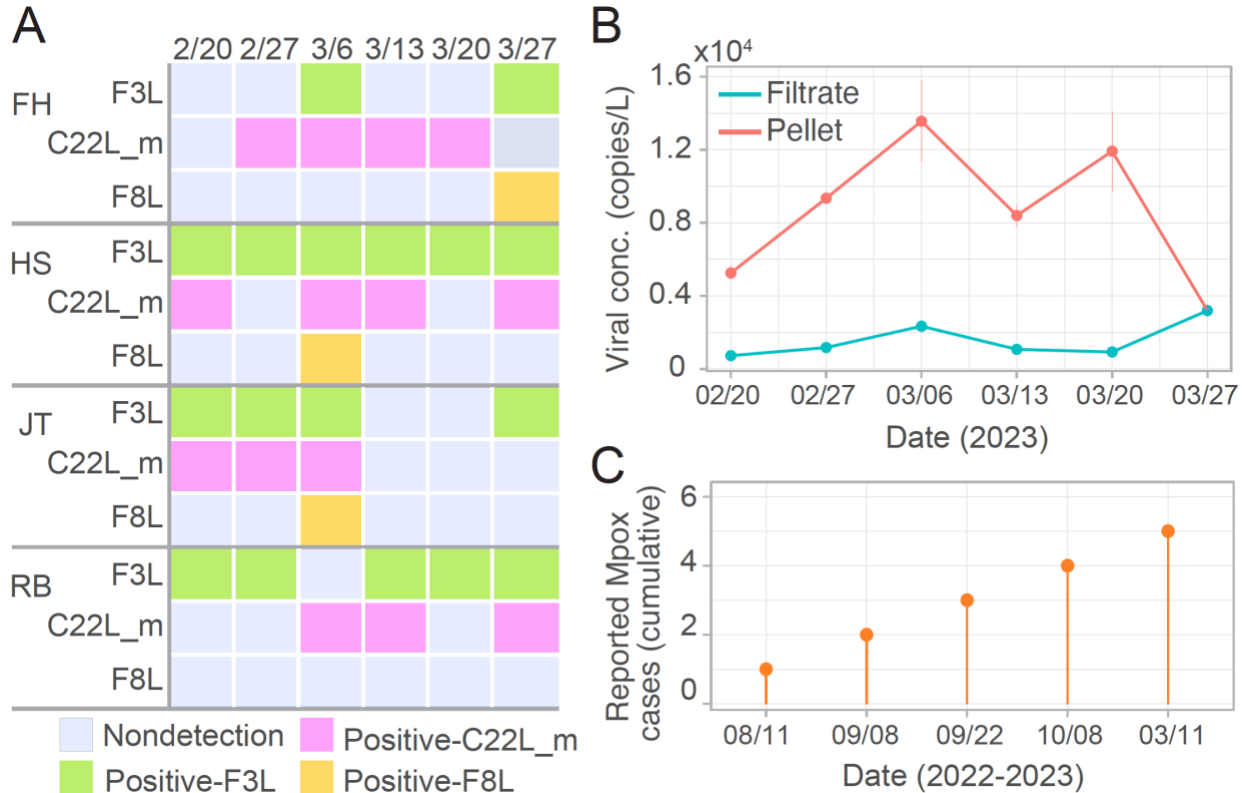
380 Mismatched nucleotides were highlighted in red. (B) Standard curves for the F3L and F8L
 381 assays for Mpx, cowpox, and horsepox virus DNA detection. The data shown represent the
 382 mean of 6 replicates with standard deviations. Trendline equations and coefficients of

383 determination are provided in Table S1. (C) Limits of detection of the F3L and F8L assays for
 384 Mpx, cowpox, and horsepox DNA fragments. n.a represents 'not tested'. The number of
 385 replicates is shown in parentheses.

386

387

388



389

390

391 **Figure 2. MPXV detection in wastewater using the F3L, F8L, and C22L_m assays. (A)**

392 Detection results using the F3L, F8L, and mismatch-corrected CDC (C22L_m) assays for

393 weekly wastewater samples collected between February 20 and March 27, 2023. **(B)** Mean viral

394 concentrations in wastewater supernatants and pellets. Data are expressed as the mean of four

395 sewersheds and the three assays. Error bars represent the standard error of the mean. **(C)**

396 Reported Mpox cases in the County. The most recent case was reported on March 11, 2023.

397

398

399

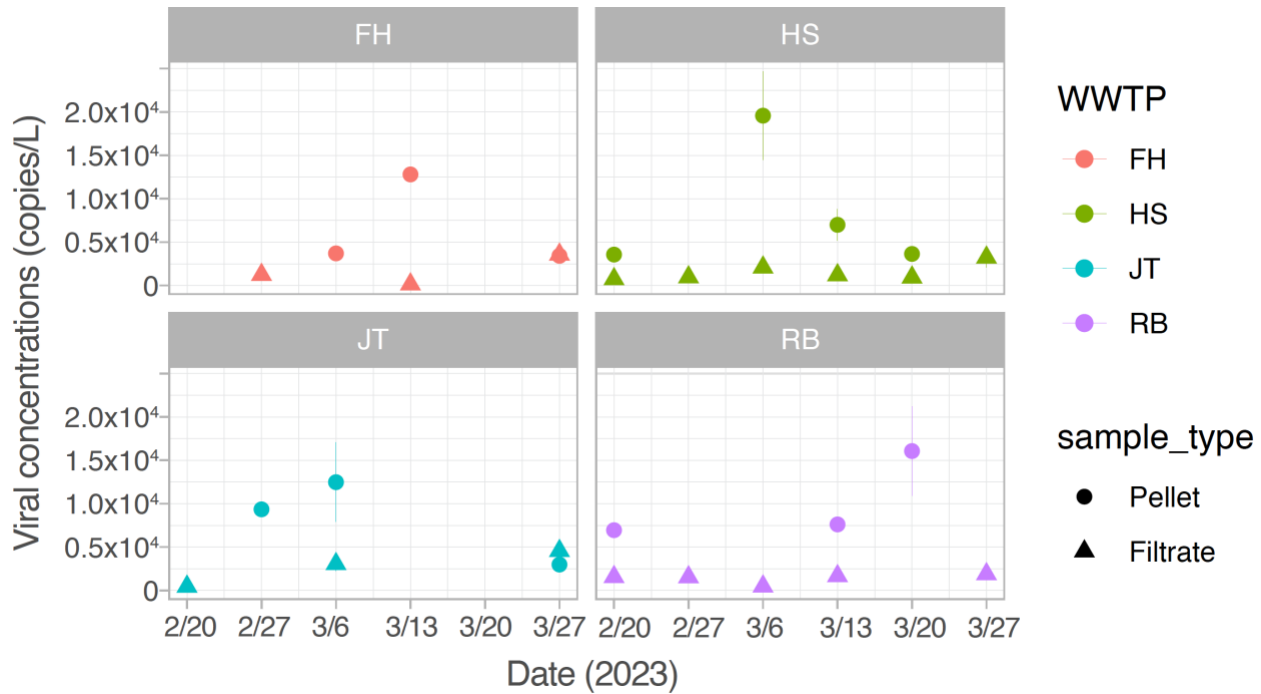
400

401

402 **Supplementary Data**

403

404



405

406 **Figure S1. Mean viral concentrations by sampling date in the four sewersheds.** Data were

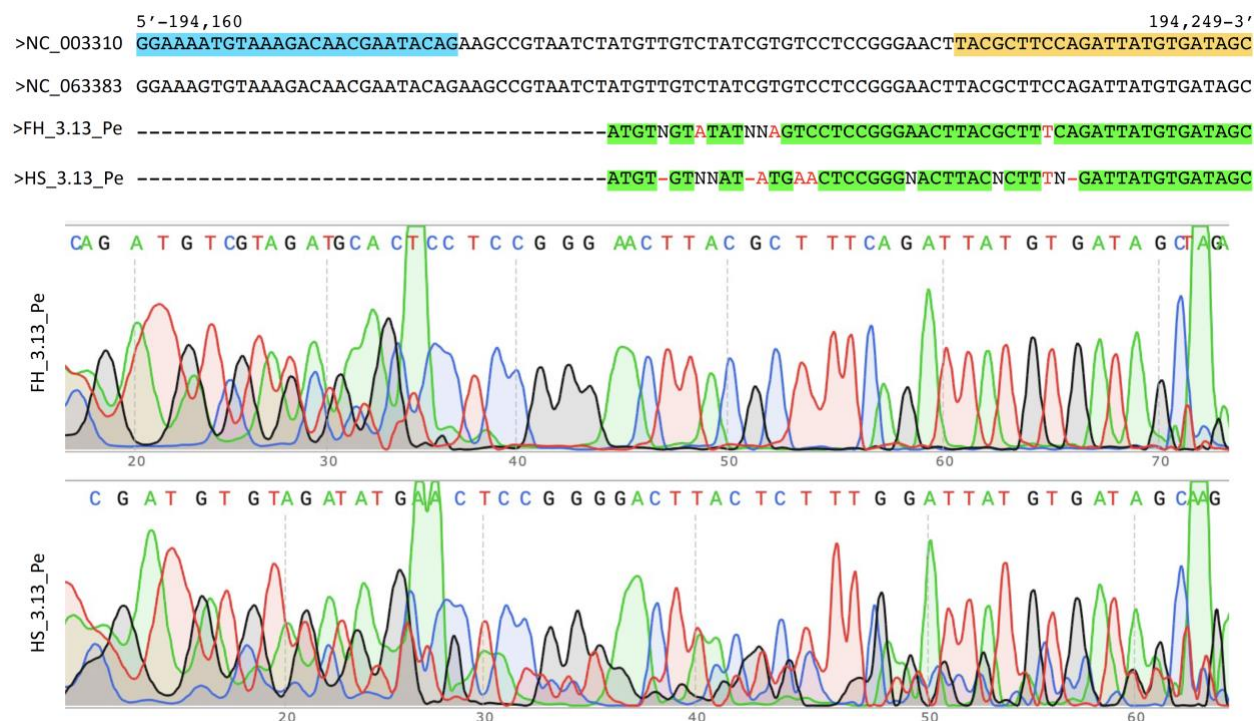
407 aggregated by the three tested assays and only positive data points are plotted. Error bars

408 represent the standard error of the mean of results from the 3 assays each with 3 technical

409 replicates.

410

411



412

413 **Fig. S2. Sanger sequencing result and alignment to MPXV genome.** Top: the sequence of

414 PCR products by C22L_m assay was aligned to MPXV reference genomes (GenBank

415 accession number: NC_003310 and NC_063383). The amplicon size of the C22L_m assay is

416 90 bp. The amplification was using wastewater pellet samples from FH and HS on March 13,

417 2023. Highlighted green: aligned sequence between PCR products and reference genomes;

418 colored red: unaligned nucleotides; highlighted cyan: forward primer region; highlighted yellow:

419 reverse primer region. Ambiguous base pairs were labeled as “N”. Bottom: sequencing

420 chromatograms for the PCR products (FH and HS) using forward primer.

421

422

423

424

425

426

427 **Table S1. Standard curves for F3L and F8L assays using Mpox, cowpox, and horsepox**
 428 **virus genome fragments.**

RT-qPCR assays	y-intercept	Slope of the standard curve	Amplification efficiency	Coefficient of determination (R ²)
F3L-Mpox	37.91	-3.3804	97.62%	0.9996
F8L-Mpox	38.333	-3.6025	89.49%	0.9984
F8L-Cowpox	40.172	-3.6352	88.40%	0.9984
F8L-Horsepox	45.428	-3.6357	88.39%	0.9987

429

430 Note: x-axis: DNA concentrations (log₁₀, copy/μl); y-axis: Ct values.

431

432

433

434 **Table S2. Summary of the alignment of F8L oligos to the 6 species in *orthopoxvirus*.**

OPV-F8L oligos	hMpox (3282) ¹	Cowpox virus (98)	Horsepox (4)	Smallpox (58)	Vaccinia virus (112)	Buffalopox (6)
OPV-F8L-F	3277 Matches	96 Matches	4 Mismatches (Vaccinia_AY678275)	56 Matches	81 Matches; 30 Mismatches (Vaccinia_AY678275)	5 Mismatches (Vaccinia_AY678275)
OPV-F8L-R	3276 Matches	79 Matches	4 Matches	57 Matches	110 Matches	6 Matches
OPV-F8L-P	3276 Matches	42 Matches; 51 Mismatches (Cowpox_MK035759)	4 Mismatches (Horsepox_BK013341)	57 Mismatches (Variola_DQ437580)	91 Matches; 19 Mismatches (Horsepox_BK013341)	6 Matches

435

¹ The number of complete genomes in NCBI as of February 13, 2023. hMpox: human monkeypox virus.

436

437

438

439

440

441

442

443

444

445 **Table S3. Primers, probes, and synthetic gene fragments used in this study.**

Oligo name	Sequence (5' to 3')
F3L-forward primer	CATCTATTATAGCATCAGCATCAGA
F3L-reverse primer	GATACTCCTCCTCGTTGGTCTAC
F3L-probe	/56-FAM/TGTAGGCCG/ZEN/TGTATCAGCATC CATT/3IABkFQ/
F8L-forward primer	TCAACTGAAAAGGCCATCTATGA
F8L-reverse primer	GAGTATAGAGCACTATTTCTAAATCCCA
F8L-probe	/5HEX/CCA TGC AAT /ZEN/ATA CGT ACA AGA TAG TAGCCAAC/3IABkFQ/
C22L_m-forward primer	GGAAAGTGTAAGACAACGAATACAG
C22L_m-reverse primer	GCTATCACATAATCTGAAAGCGTA
C22L_m-probe	/56-FAM/AAGCCGTAA/ZEN/TCTATGTTGTCTATCG TGTCC/3IABkFQ/
MPXV-F3L (KJ642613)	GAATAACATCATCAAAGACTTATTATCCTCTCTCATT GATTTTTTCGCGGGATACATCATCTATTATAGCATCAGC ATCAGAATCTGTAGGCCGTGTATCAGCATCCATTGTC GTAGACCAACGAGGAGGAGTATCGTCGGAACCTGTAC ACCATAG
MPXV-F8L (NC063383)	GCCGAAGCGTATGAGTATAGAGCACTATTTCTAAATC CCATCAGACCATATACTGAGTTGGCTACTATCTTGTAC GTATATTGCATGGAATCATAGATGGCCTTTTCAGTTGA ACTGGTAGCCTG

Cowpox-F8L	GCCGAAGCGTATGAGTATAGAGCACTATTTCTAAATC
(MK035759)	CCATCAGTCCATATACTGAGTTGGCTACGATCTTGTAC
	GTATACTGCATGGAATCATAGATGGCCTTTTCAGTTGA
	ACTGGTAGCCTG
Horsepox-F8L	GCCGAAGCGTATGAGTATAGAGCACTATTTCTAAATC
(BK013341)	CCATCAGACCATATACTGAGTTGGCTACTATTTTGTAC
	GTATATTGCATGGAATCATAAATGGCCTTTTCAGTTGA
	ACTGGTAGCCTG

446

447