

Figures

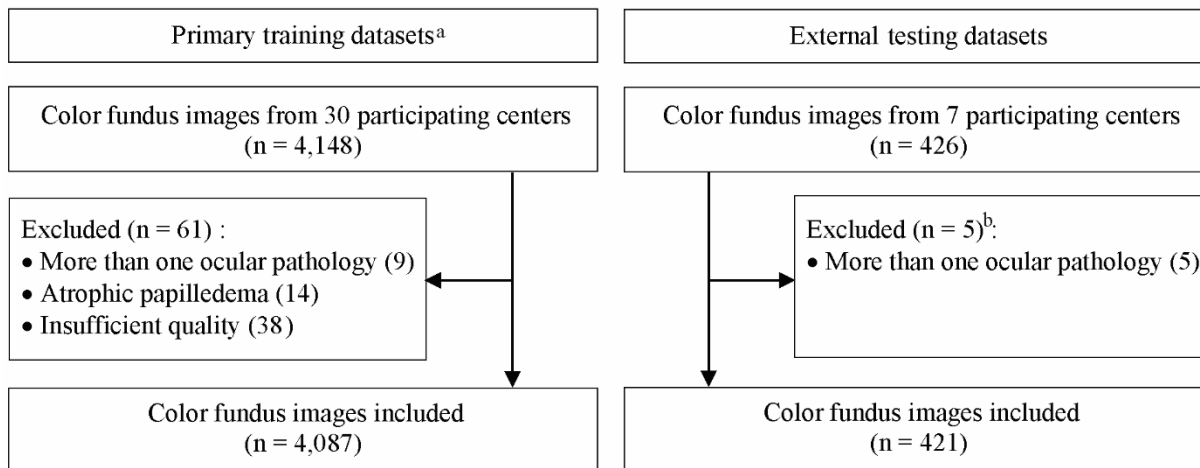


Fig 1. Flowchart displaying the process of inclusion of fundus photographs in the training and testing datasets.

^a Primary training datasets included training, validation, and internal-testing datasets.

^b Details are provided only for the optic disc drusen, the details regarding papilledema photographs are provided elsewhere.²¹

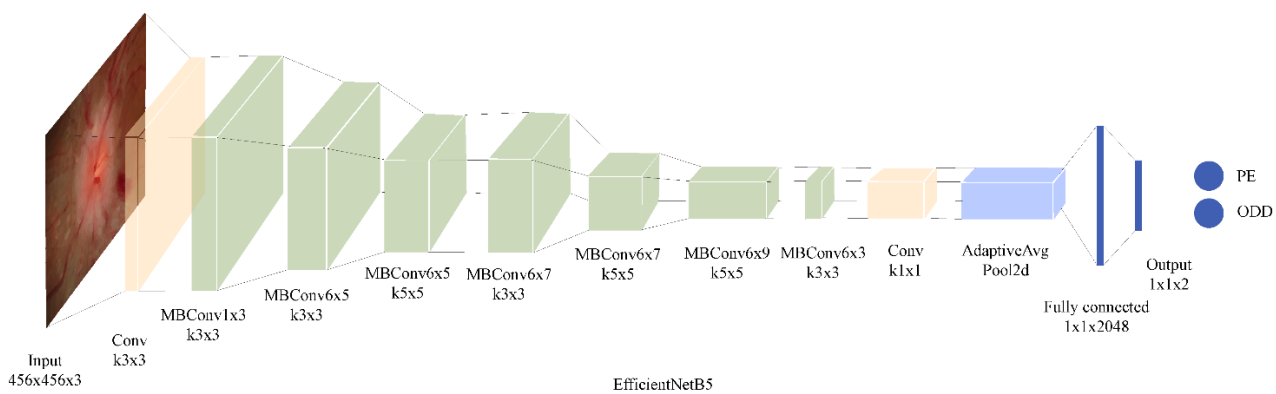


Fig 2. Deep learning classification network.

Abbreviation: AdaptiveAvg Pool2d = 2D adaptive average pooling; Conv = convolution; MBCConv = mobile inverted bottleneck convolution; ODD = optic disc drusen; PE = papilledema.

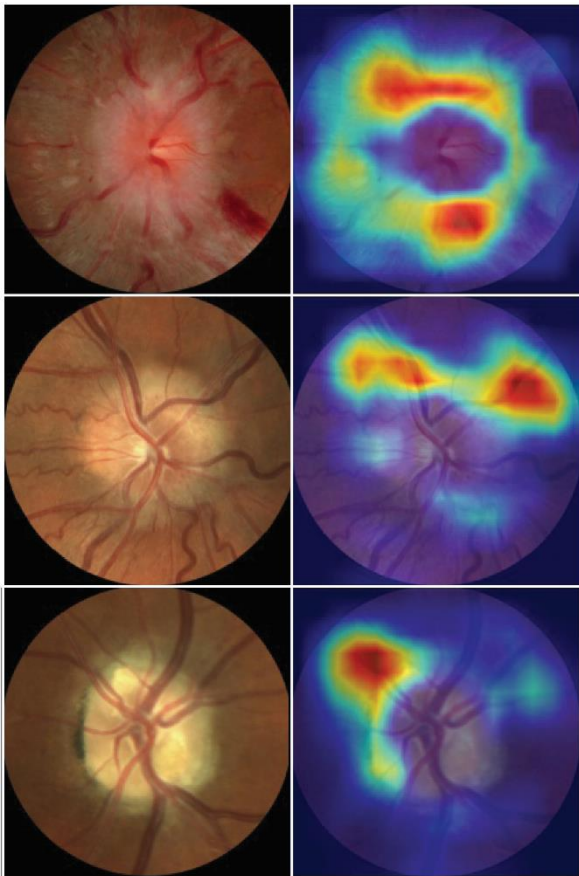


Fig 3. Examples of color fundus photographs centered on the optic disc and corresponding class activation maps (heatmaps).

Upper row: Optic disc photograph, accurately predicted as “papilledema” by the algorithm. The heatmap displays a circular, ring-shaped activation, at the margins of the optic disc. Middle row: optic disc photograph of confirmed buried optic disc drusen, accurately diagnosed by the algorithm (probability of ODD = 96.74% vs. probability of papilledema = 3.26%). Bottom row: photograph of an optic disc with visible optic disc drusen which was accurately identified by the algorithm (probability = 99.99%). The activation region (right column) displays a region that is superimposed on the visible drusen (left column, 11 o’clock).

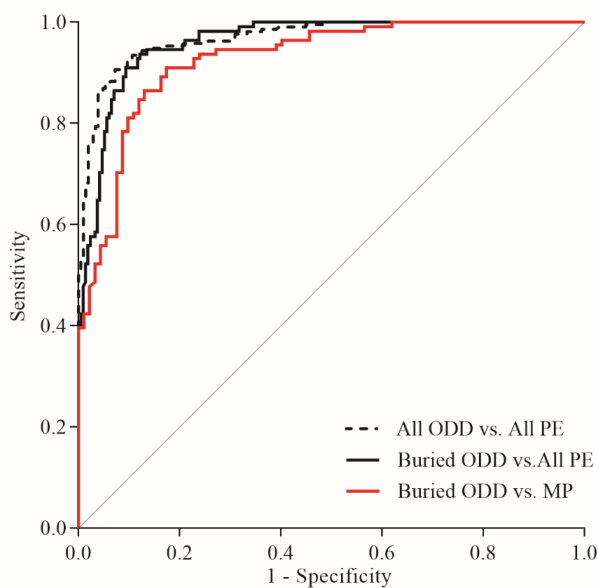


Fig 4. Performance of the deep learning system for discriminating between buried optic disc drusen (ODD) and papilledema.

The deep learning system discriminated ODD (both visible and buried) from papilledema (at all stages of severity), with an area under the receiver operating characteristic curve (AUC) of 0.97 (95% CI, 0.96 to 0.98). The system could discriminate between buried ODD and papilledema (at all stages of severity) with an AUC of 0.96 (95% CI, 0.95 to 0.98) and between buried ODD from discs with mild-to-moderate papilledema (AUC 0.93 [95% CI, 0.90 to 0.96]).

Table 1 List of Participating Centers and Number of Images Included per Center

Participating center	Discs with ODD	Discs with PE	Total
	No. of images		
Training, validation, and internal testing datasets			
Angers, France	34	307	341
Atlanta, GA, United States	316	1231	1547
Baltimore, MD, United States	37	134	171
Bangkok, Thailand	3	0	3
Bologna, Italy	11	13	24
Bordeaux, France	21	45	66
Chennai, India	53	293	346
Calgary, Alberta, Canada	0	100	100
Coimbra, Portugal	18	24	42
Copenhagen, Denmark	23	92	115
Freiburg, Germany	88	61	149
Geneva, Switzerland	4	14	18
Grenoble, France	8	6	14
Guangzhou, China	2	0	2
Hongkong, China	8	16	24
Kinshasa, Democratic Republic of Congo	0	8	8
London, Ontario, Canada	0	276	276
London, United Kingdom	20	34	54
Manila, Philippines	2	11	13
Paris, France	2	101	103
Rochester, MN, United States	21	96	117
Seoul, Korea	107	129	236
Singapore, Singapore	2	72	74
Sydney, Australia	24	50	74
Syracuse, NY, United States	16	22	38
Tehran, Iran	25	5	30
Toronto, Ontario, Canada	8	86	94
Ufa, Russia	4	4	8
Total Training, validation, and internal testing datasets	857	3230	4087
External-testing datasets			
Angers, France	0	10	10
Bangkok, Thailand	0	36	36
Calgary, Alberta, Canada	24	0	24
Copenhagen, Denmark	101	0	101
Freiburg, Germany	0	86	86
London, Ontario, Canada	82	0	82
Tehran, Iran	0	82	82
Total external-testing data sets	207	214	421

Abbreviations: ODD = optic disc drusen; PE = papilledema.

Table 2 Demographics and Image Characteristics in the Training, Validation and Testing Datasets

Characteristics	Training and validation	Internal testing	External testing	Total
Number of patients (images)	1606 (3357)	353 (730)	221 (421)	2180 (4508)
Age, y, mean (SD)	33.0 (15.3) ^a	30.3 (14.7) ^b	33.8 (16.9) ^c	33.0 (15.4)
Female, n (%)	1189 (77.8) ^a	263 (78.3) ^b	158 (71.5) ^c	1610 (77.2)
Images with buried ODD, n (%)^d	403 (56.5)	97 (67.4)	111 (53.6)	
Images with visible ODD, n (%)^d	310 (43.5)	47 (32.6)	96 (46.4)	

^a On the basis of 95.2% available patient demographic data.

^b On the basis of 95.2% available patient demographic data.

^c On the basis of 100.0% available patient demographic data.

^d Percent referred to the total number of all ODD images in each column.

Table 3 The Frequency Distribution of Buried Optic Disc Drusen Stratified by Age Groups

Age groups	Training and Validation ^a		Internal testing ^b		External testing ^c	
	No. of all ODD images	No. of buried ODD (%)	No. of all ODD images	No. of buried ODD (%)	No. of all ODD images	No. of buried ODD (%)
<11	65	63 (96.9)	20	20 (100.0)	6	5 (83.3)
11-20	184	139 (75.5)	37	33 (89.2)	51	36 (70.6)
21-30	90	55 (61.1)	25	16 (64.0)	45	25 (55.6)
31-40	80	44 (55.0)	19	10 (52.6)	35	14 (40.0)
>40	261	87 (33.3)	32	9 (28.1)	70	31 (44.3)
Total	680	388 (57.1)	133	88 (66.2)	207	111 (53.6)

^a On the basis of 95.4% available age data

^b On the basis of 92.4% available age data

^c On the basis of 100.0% available age data

Table 4 Classification Performance of the Deep-Learning System in Discriminating Optic Disc Drusen from Papilledema in the Validation, Internal-Testing Data Set and External-Testing Data Set

	Total	ODD	PE	AUC	Sensitivity, %	Specificity, %	Accuracy, %
	No. of images				(95% CI)		
Validation dataset							
ODD vs. PE	501	105	396	0.99 (0.98-1.00)	93.3 (89.5-97.1)	97.2 (95.8-98.8)	96.4 (95.0-97.8)
Internal-testing dataset							
ODD vs. PE	730	144	586	0.98 (0.97-0.99)	91.9 (90.1-94.3)	93.9 (90.1-97.3)	93.2 (91.1-94.7)
External-testing dataset							
ODD vs. PE	421	207	214	0.97 (0.96-0.98)	86.0 (82.1-90.1)	94.9 (92.3-97.6)	90.5 (88.0-92.9)

Abbreviations: AUC = area under the receiver-operating-characteristic curve; CI = confidence interval; ODD = optic disc drusen; PE = papilledema.

Table 5 Classification Performance of the Deep-Learning System in Discriminating Different Subgroups of Optic Disc Drusen and Papilledema in the External-Testing Data Set

	Total	ODD	PE	AUC	Sensitivity, %	Specificity, %	Accuracy, %
	No. of images						
Visible ODD vs. SP	218	96	122	0.99 (0.98-1.00)	94.8 (91.7-98.4)	97.5 (95.7-100.0)	96.3 (94.4-98.6)
Visible ODD vs. all PE	310	96	214	0.98 (0.97-0.99)	94.8 (91.5-98.4)	94.9 (92.4-97.7)	94.8 (92.8-97.0)
Visible ODD vs. MP	188	96	92	0.96 (0.94-0.98)	94.8 (91.8-98.4)	91.3 (86.5-96.4)	93.1 (90.2-96.1)
Buried ODD vs. SP	233	111	122	0.99 (0.98-1.00)	78.4 (72.1-84.9)	97.5 (95.6-100.0)	88.4 (85.0-92.1)
Buried ODD vs. all PE	325	111	214	0.96 (0.95-0.98)	78.4 (72.2-85.0)	94.9 (92.3-97.7)	89.2 (86.4-92.2)
Buried ODD vs. MP	203	111	92	0.93 (0.90-0.96)	78.4 (72.2-84.7)	91.3 (87.0-96.4)	84.2 (80.2-88.6)

Abbreviations: AUC = area under the receiver-operating-characteristic curve; CI = confidence interval; MP = mild-to-moderate papilledema; ODD = optic disc drusen; PE = papilledema; SP = severe papilledema.

