

Bridging the translational neuroscience gap: Development of the ‘shiftability’ paradigm and an exemplar protocol to capture psilocybin-elicited ‘shift’ in neurobiological mechanisms in autism.

Tobias P. Whelan^{1,2}, Eileen Daly¹, Nicolaas A. Puts^{1,3,4}, Ekaterina Malievskaia², Declan G.M. Murphy^{1,3,4}, Grainne M. McAlonan^{1,3,4}

Affiliations:

¹ Department of Forensic and Neurodevelopmental Sciences, Institute of Psychiatry, Psychology & Neuroscience, King’s College London, UK

² COMPASS Pathfinder Ltd, London, UK

³ Sackler Institute for Translational Neurodevelopment, Institute of Psychiatry, Psychology & Neuroscience, King’s College London, UK

⁴ MRC Centre for Neurodevelopmental Disorders, King’s College London, UK

Corresponding author: Grainne McAlonan, Department of Forensic and Neurodevelopmental Sciences, Institute of Psychiatry, Psychology & Neuroscience, King’s College London, UK, grainne.mcalonan@kcl.ac.uk

Abstract

Clinical trials of pharmacological approaches targeting the core features of autism have failed. This is despite evidence from preclinical studies, genetics, post-mortem studies and correlational analyses linking peripheral and central markers of multiple candidate neurochemical systems to brain function in autism. Whilst this has in part been explained by the heterogeneity of the autistic population, the field has largely relied upon association studies to link brain chemistry to function. The only way to *directly* establish that a neurotransmitter or neuromodulator is involved in a candidate brain function is to *change* it and observe a *shift* in that function. This experimental approach dominates preclinical neuroscience, but not human studies. There is very little direct experimental evidence describing how neurochemical systems modulate information processing in the living human brain. As a result, our understanding of how neurochemical differences contribute to neurodiversity is limited and impedes our ability to translate findings from animal studies into humans.

Here, we begin by introducing our “shiftability” paradigm, an approach to bridge the translational gap in autism research. We then provide an overview of the methodologies used and explain our most recent choice of psilocybin as a pharmacological probe of the serotonin system *in vivo*. Finally, we provide a summary of the protocol for ‘PSILAUT’, an exemplar “shiftability” study which uses psilocybin to directly test the hypothesis that the serotonin system functions differently in autistic and non-autistic adults.

1. Introduction

Autistic spectrum disorder (ASD), the overarching definition used by our current diagnostic guidelines, is a life-long neurodevelopmental condition characterised by differences in social interaction and communication, repetitive or restricted patterns of behaviour, and sensory differences¹. Clinical trials have failed to offer pharmacological options for those that seek support. This in part reflects the complex neurobiology and diversity of autism. However, clinical trial efforts have also been hampered because there is no reliable experimental bridge from ‘basic’ neuroscience to clinical application. This is not an isolated problem; it is common across neuropsychiatric conditions. We do not yet fully understand how neurochemical systems regulate information processing within and across different levels of brain organisation in neurotypical or neurodivergent people, and in particular, how this links to core traits of these conditions.

A constraint is that human neuroscience research has largely relied on association or correlational (and cross-sectional) evidence linking genetic, preclinical, post-mortem and neuroimaging data to, for example, trait(s), symptom(s) or diagnoses. However, correlations are not causal. The only way to establish that a neurosignalling system is involved in a candidate brain mechanism is to change it and observe a ‘shift’ in that mechanism. This is basis of preclinical study designs, but there has been limited translation to humans.

We have developed a direct experimental approach to examine neurochemical regulation of information processing across the organisational levels of the human brain which is sensitive to *individual* differences in neurotypical and neurodivergent people. We call this a “shiftability” paradigm. To date, our “shiftability” studies have demonstrated that the autistic brain responds differently when different neurochemical systems are perturbed by a single, low dose pharmacological challenge²⁻¹¹.

Here, we begin by introducing our “shiftability” paradigm, a novel approach to bridge the translational gap in autism research. We then provide an overview of the methodologies used and explain our most recent choice of psilocybin as a pharmacological probe of the serotonin system *in vivo*. Finally, we provide a summary of the protocol for ‘PSILAUT’, our latest “shiftability” study which uses psilocybin to directly test the hypothesis that the brain’s

serotonin system functions differently in autistic and non-autistic adults. The end goal across our many shiftability studies is to build a pharmacological repository of how different drugs ‘shift’ brain processing mechanisms across multiple levels of organisation in autistic and non-autistic individuals.

2. Measuring ‘shift’

There is currently no reliable ‘biomarker’ that separates people with an autism diagnosis from controls¹². For example, functional magnetic resonance imaging (fMRI) data from the EU-AIMS consortium indicates that there is no statistically significant difference in brain activation during facial emotion processing in autism¹³. This work emphasises the message from a recent large-scale meta-analysis carried out by Mottron and colleagues. They found that, even if there are statistically significant case-control differences, the effect sizes reported from ASD case-control analyses are modest at best (the largest is around a standard deviation of 1.0 for Theory of Mind studies¹²) and have gotten smaller over time, despite ever larger study sample sizes¹⁴. One interpretation of this pattern is that we have too broad a diagnostic definition of autism; another is that the larger the sample size the more likely it is to revert towards the mean; and yet another is that we need to identify more biologically homogeneous subgroups (i.e. stratify). None of these approaches have significantly advanced the field. We propose a different strategy – that measures should be sensitive to individual diversity and capture more ‘foundational’ aspects of brain function; and that they should permit examination of how these functions ‘shift’ in response to a change in neurochemical pathways in autistic and non-autistic people.

In selecting measures that capture ‘shift’, we must recognise that the genetic and environmental influences which increase the likelihood of neuropsychiatric conditions do not map directly to autism. Instead, they generate the neurobiological conditions for autism and other neurodevelopmental, neurological and mental health conditions, such as schizophrenia, attention deficit hyperactivity disorder, mood disorders, epilepsy and learning difficulties. These are life factors which act on the brain systems developing early, namely sensory systems and emerging interconnecting whole-brain networks^{15–20}. Altering these ‘foundational’ aspects of brain development may have cascading effects as the brain matures, generating diversity in cognition and behaviour^{21,22}. Secondary and compensatory mechanisms will also continue to act across the lifespan leading to heterogeneous clinical outcomes²³. However, early changes

to the foundational properties of the brain should persist and could therefore be a measurement target of differences in brain function.

In support of this principle, we and others have evidence that the regulation of sensory processing and the functional connectivity of brain networks is associated with ASD across the lifespan. For example, using EEG, Kolenik and colleagues have reported that infants later diagnosed with autism do not suppress neural responses to repeated auditory stimulation²⁴; similarly, Piccardi and colleagues identified that infants with elevated likelihood for autism show reduced tactile sensory gating²⁵. Using MRI, we have reported that the local functional connectivity of sensory systems is altered in newborns with a higher likelihood of developing autism¹⁵; and the global functional connectivity of brain networks at full-term predicts emergence of later autistic traits²⁶. Moreover, we have reported similar profiles in autistic adults, namely reduced sensory suppression detected using EEG¹⁰ and altered functional connectivity of sensory systems and whole-brain networks using MRI²⁷. This is important because these measures not only capture brain function across age groups, they may also be back-translated to animal models to support a translational bridge^{28,29}.

Also important is that selected measures of altered brain function are likely to be sensitive to modulation with a pharmacological challenge. Using fMRI, we have consistently found this to be the case. For example, we have reported that fMRI response can be modulated with single dose drug challenges which target components of the serotonin system (citalopram and tianeptine)^{2,3,8,9}, glutamate-GABA system (riluzole)¹¹ and endocannabinoid system (cannabidiol)^{4,5}. We have also used EEG recordings during sensory stimulation to capture response to GABA_B receptor agonist, arbaclofen. We have been able to quantify individual ‘shifts’ in these measures in response to drug challenge and differences at group-level between autistic and non-autistic participants^{10,30}. The range of measures used to capture ‘shift’ and their target level of brain organisation is shown in Figure 1.

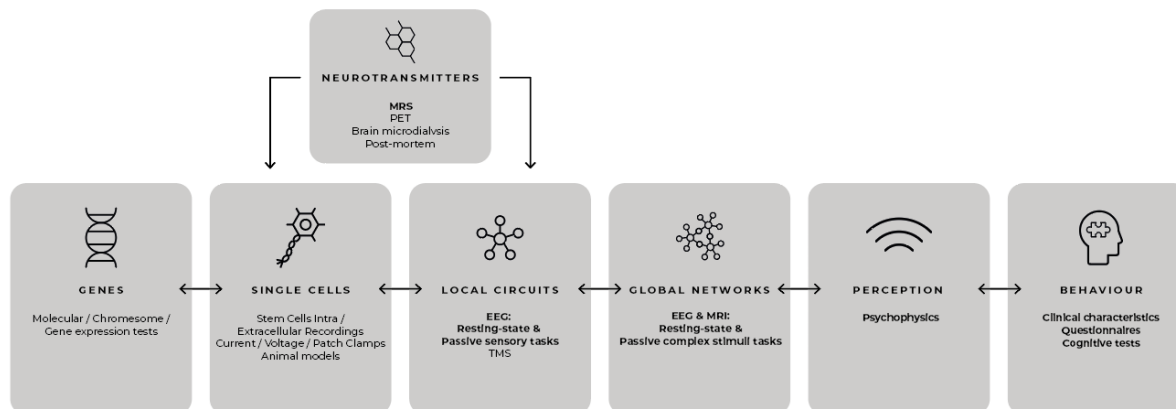


Figure 1. The organisational levels of information processing in the brain and methodologies that probe each level. Methodologies used to detect ‘shift’ that are included in our “shiftability” paradigm and discussed here are shown in bold. Bidirectional arrows represent interaction between organisation levels (adapted from Ahmad & Ellis, 2022³¹).

3. Targeting the serotonin system in autism using psilocybin

Alterations in the serotonin system are consistently reported in autism and hence, whether there are functional differences in this system is an important focus for our “shiftability” studies. However, the evidence linking serotonin to autism to date, has mostly been indirect from associations and/or correlational studies. For example, polymorphisms in genes for serotonin synthesis, transporters and receptors are associated with autism^{32,33}. Elevated whole blood serotonin levels are also reported in one-third of autistic individuals^{34,35}. In contrast to these indirect approaches, direct alteration of serotonergic system function *in vivo* can be achieved using pharmacological probes. In animal model systems, this modulation of receptor targets of serotonin has included agonism of 5HT_{1A} and 5HT₇ receptors to increase social behaviour and reduce stereotypy³⁶; and activation of 5HT_{2A}, 5HT_{1A} and 5HT₇ receptors to shift glutamate-GABA indices of excitation/inhibition (E/I) balance^{37,38}, proposed to be altered in autism³⁹. In humans, this approach is less frequently taken, but our team has previously reported that acutely elevating serotonin levels with a single dose of selective-serotonin reuptake inhibitor (SSRI) citalopram produces sustained activation of brain regions associated with facial

expression processing in autistic adults, but not in controls². This finding suggests that acute non-selective activation of the serotonin system may influence behaviours associated with autism.

There is also evidence implicating specific serotonin receptors in autism. The 5HT_{2A} receptor, encoded by the HT2RA gene, is a robust functional candidate gene in autism⁴⁰⁻⁴³, and lower cortical 5HT_{2A} receptor binding has been reported to correlate with social communication differences in autism⁴⁴. The 5HT_{2A} receptor is expressed throughout the cortex but especially in regions related to sensorimotor integration⁴⁵ and the so-called default mode network responsible for “self” and “other” processing⁴⁶. At the circuit level, 5HT_{2A} receptor signalling is thought to enhance neural plasticity⁴⁷ and increases cortical glutamate and thalamic GABA levels³⁸. However, it is not known whether there are autistic differences in 5HT_{2A} regulation of sensorimotor processes, networks such as the default mode network, and regulation of glutamate-GABA levels is not known. To assess this, we need targeted pharmacological probes. Unlike animal studies, the choice of probe in humans is constrained by the safety and side effect profile of candidate compounds, and few (if any) neuropsychiatric drugs used in people are entirely selective. With this caveat in mind, we selected psilocybin (4-phosphoryloxy-*N,N*-dimethyltryptamine) as a pharmacological probe of the serotonin system based on its affinity for 5HT_{2A}Rs.

Psilocybin is a classic psychedelic compound produced by several species of mushrooms, including so-called “magic mushrooms”. Psilocybin is rapidly metabolised into its active component psilocin⁴⁸. Psilocin is a 5HT_{2A}R agonist but also binds several serotonin receptors, including 5HT₇, 5HT_{2B}, 5HT_{1D}, 5HT₆, 5HT₅, 5HT_{2C} & 5HT_{1B} receptors in decreasing order of reported affinity⁴⁹.

Prior studies have used relatively high doses of psilocybin to explore the effects of psychedelics on the brain. However, we will use lower doses (2 mg and 5 mg) in our “shiftability” protocol to assess whether 5HT_{2A}R-mediated brain responses are uncomplicated by marked psychedelic experiences. We are confident that our dose range will generate a ‘shift’ in brain function based on evidence using positron emission topography that similar doses of psilocybin engage 5HT_{2A}R receptors⁵⁰ and low dose psilocybin is sufficient to alter cognition and obsessive-compulsive behaviour^{51,52}. Low doses of the serotonergic psychedelic lysergic acid diethylamide (LSD) and psilocybin-containing mushrooms also acutely alter brain resting-state fMRI and EEG indices in the non-autistic population^{53,54}, as well as neural responses to sensory

stimuli⁵⁵. Therefore, we expect that 2 mg and 5 mg of psilocybin will expose functional differences in the serotonin system targeted by psilocybin in autistic and non-autistic individuals.

4. The “shiftability” paradigm: An example study protocol

4.1. Overall design of the ‘PSILAUT’ study

This study will be conducted in accordance with the Declaration of Helsinki at the Institute of Psychiatry, Psychology and Neuroscience (IoPPN) at De Crespigny Park, SE5 8AF, London, United Kingdom. Our study does not address safety or clinical efficacy and the UK Medicines and Health Regulatory Authority (MHRA) has confirmed that our protocol is therefore not a clinical trial of an Investigational Medicinal Product (IMP) as defined by the EU Directive 2001/20/EC. Nevertheless, as our design incorporates a ‘drug intervention’ our protocol has been registered on clinicaltrials.gov for transparency (NCT05651126). Ethical approval has been received from the UK Health Research Authority following review by the Dulwich Research Ethics Committee (reference: 21/LO/0795).

We aim to recruit up to 70 healthy adult participants including 40 autistic and 30 non-autistic control participants in our placebo-controlled, randomised, double-blind, repeated-measures, cross-over, case-control study. All participants will provide written informed consent. Participants will receive either placebo or one of two single doses (2 mg or 5 mg) of oral synthetic COMP360 psilocybin on three separate visits. The order of administration of placebo and psilocybin will be pseudo-randomised to ensure balanced numbers of individuals have placebo or drug on their first visit, and to control for order effects. However, the lowest dose of psilocybin will always precede the higher dose to allow for unblinding should a participant experience unwanted side effects on either of the first two visits. If that visit is a low dose psilocybin visit, we will avoid exposing that participant to the higher dose on a subsequent visit.

The study is an Investigator-Initiated Study sponsored by King’s College London and co-Sponsored by South London and Maudsley NHS Foundation Trust. It is part funded by COMPASS Pathfinder Ltd with infrastructure support from the NIHR-Maudsley Biomedical Research Centre at South London and Maudsley NHS Foundation Trust and King’s College London. COMPASS Pathfinder Ltd are donating psilocybin (as “COMP360”).

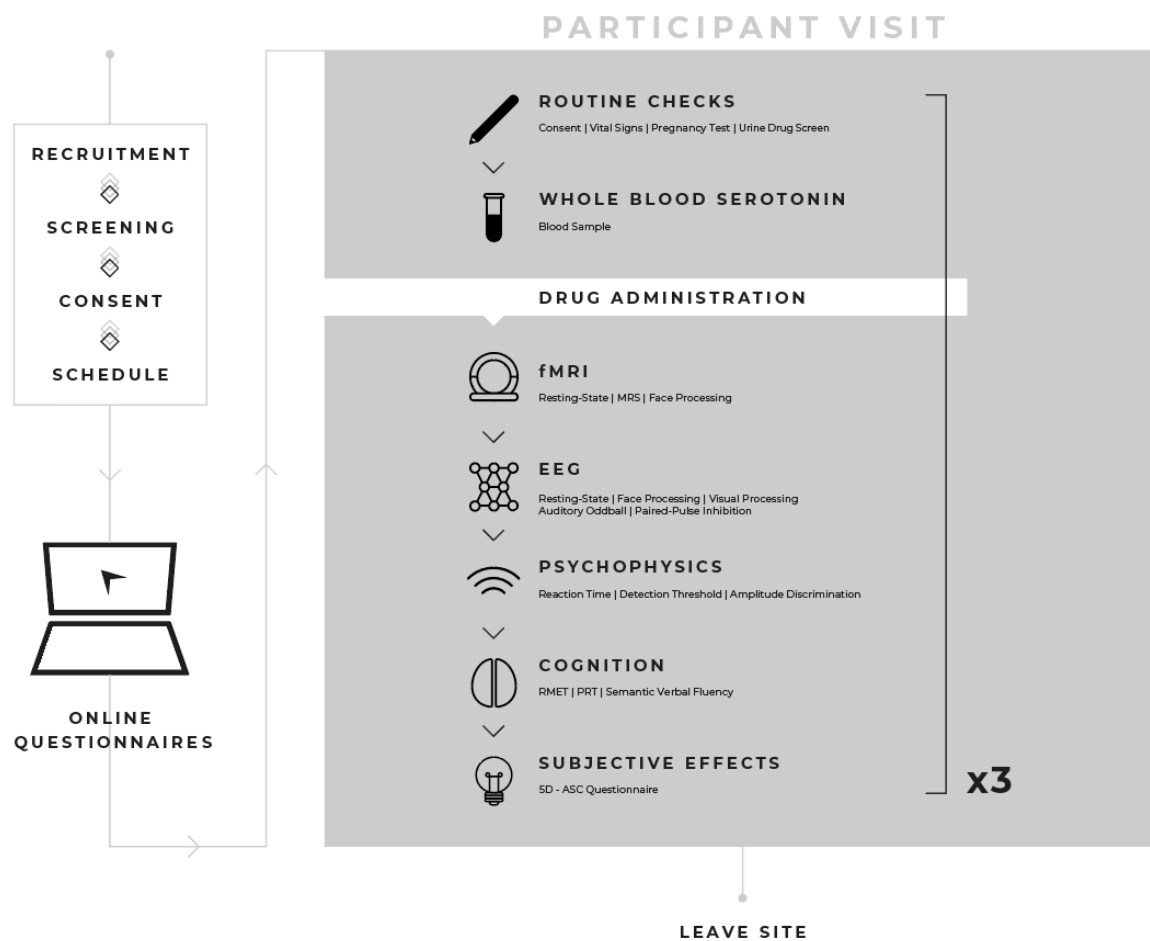


Figure 2. “PSILAUT” recruitment and study procedures. Autistic and non-autistic participants will be recruited from existing local research databases, advertising on the King’s College London website and wider dissemination of study information. Participants are welcome to self-refer. Autistic participants will also be recruited from clinical contacts South London and Maudsley NHS trust, local and national support groups and via a database managed by our collaborators at the Autism Research Centre, University of Cambridge. Interested participants will be sent an information sheet and screened via video call (eg. Zoom) or phone for eligibility. Written consent will be sought after inclusion criteria are confirmed and the participant is then assigned to a study schedule. Participants will be provided with log in details to an online platform (Delosis Ltd., London) to complete a battery of questionnaires remotely. Participants will visit the study site on three separate occasions. A blood sample will be collected on one of the three visits for quantification of whole blood serotonin levels. Each participant will complete an MRI scan session to acquire a structural, resting-state functional MRI scan and a face emotion processing task. Participants will wear a wrist wearable (ActiGraph, Pensacola, FL, USA) following the MRI scan session for the remainder of the study visit. The EEG paradigm will include resting-state and functional activation during a face processing, auditory oddball, visual processing and tactile paired-pulse inhibition tasks. Psychophysical tasks will be collected prior to a cognitive battery which will include the ‘reading the mind in the eyes’ (RMET), probabilistic reversal learning (PRT), both of

which will be delivered using PsyTools (Delosis Ltd., London) and a semantic verbal fluency task. The 5-dimensional altered states of consciousness (5D-ASC) questionnaire will then be completed to quantify any subjective effects experienced by participants.

4.2. 'PSILAUT' Protocol Measures

Baseline characterisation: A comprehensive baseline characterisation will be obtained. An expert clinical diagnosis of ASD from a recognised UK assessment service will be accepted. This may be supported by the Autism Diagnostic Interview-Revised⁵⁶ where an appropriate informant is available. An Autism Diagnostic Observation Schedule⁵⁷ will be used to assess current symptom level, but if it has already been used to inform the diagnostic assessment in adulthood, it will not be repeated. Additional baseline questionnaires will quantify core autistic features (e.g. social behaviour or sensory differences), relevant cognitive domains (e.g. intolerance of uncertainty and behavioural flexibility) and the symptomology of co-occurring psychiatric conditions.

4.2.1. Neurometabolites

Magnetic Resonance Spectroscopy (MRS): An MRS Hadamard Encoding and Reconstruction of MEGA-Edited Spectroscopy (HERMES) sequence⁵⁸ will be collected during the MRI scan for the dorsal medial prefrontal cortex region. HERMES permits the quantification of levels of metabolites in the living brain and is focused on estimating GABA and Glutamate-glutamine markers of E/I balance. For the purposes of our study, given the evidence that E-I pathways are modulated by 5HT_{2A} receptor action in animal models³⁸, we will be able to examine the impact of psilocybin on these tissue level measures of E-I balance.

4.2.2. Local Circuits

EEG:

Resting-state: High-density (64-channel) EEG data will be collected during the resting-state, metrics from which local circuit activity can be derived such as beta and gamma band power/frequency³¹. Oscillations in the beta frequency band at rest, for example, are associated with inhibitory neurotransmitter levels in sensorimotor cortex⁵⁹. This, and other EEG-derived metrics such as aperiodic activity, are considered a proxy measure for E/I balance *in vivo*³¹. Hence, we will be able to examine the impact of psilocybin on these dynamic measures of E-I balance.

Passive sensory tasks:

Visual domain: A visual processing task (contrast saturation) in which steady-state evoked potentials (SSVEPs) are elicited by passive surround suppression stimuli will be conducted. We have shown that SSVEPs during this task are altered in autism¹⁰. 5HT_{2A}Rs are particularly highly expressed in the primary visual cortex⁴⁶, and their agonism alters visual response amplitudes and surround suppression in mouse primary visual cortex⁶⁰. In humans, we expect visual processing to be altered by 5HT_{2A}R activation given that the marked visual perceptual changes robustly induced with higher doses of psychedelics are blocked by pretreatment with the 5HT₂ receptor antagonist, ketanserin⁶¹.

Auditory domain: A conventional auditory oddball paradigm (mismatch negativity, MMN)⁶² will be used to passively measure ‘repetition suppression’ (or habituation) to repetitive auditory stimuli and response to an unexpected ‘deviant’ stimulus (the event-related mismatch negativity MMN response). We and others have observed less repetition suppression in both eight-month-old infants who go on to receive a diagnosis of autism, and adults with a diagnosis of autism^{24,30}. Thus, this signal appears linked to autism across infancy to maturity. The impact of autism on the event-related MMN is less consistent and varies with age⁶³⁻⁶⁵. The latter may in part be due to differences in the serotonin system, as the MMN response can be modulated by acute elevation of serotonin levels by the highly selective SSRI escitalopram⁶⁶. In this study we will test the prediction that psilocybin alters both sensory suppression and MMN in autism differently compared to controls.

Tactile domain: A tactile paired-pulse inhibition task will be used to passively investigate EEG responses as objective markers of sensory gating. Aligning with findings in the auditory

and visual domain, less tactile neural repetition suppression in this task is associated with autism²⁵. As processing of tactile stimuli is also known to be perturbed by 5HT_{2A}R agonism with psilocybin⁶⁷, we also expect to elicit functional differences following psilocybin in autistic and non-autistic individuals in this paradigm.

4.2.3. Global Networks

Resting-State:

EEG: Oscillatory power will be assessed across multiple frequency bands during the resting-state. This will include electrodes over key brain regions implicated in autism such as those belonging to the default mode network⁶⁸. Reduced oscillatory power over DMN regions using electrophysiological approaches following 5HT_{2A}R activation by psilocybin has been reported previously⁶⁹. Functional connectivity analyses (e.g. within and between brain networks) can also be derived from EEG, and this will complement connectivity analyses from resting-state fMRI.

MRI: Participants will undergo a structural and functional MRI scan. Scans will be acquired on a 3.0 Tesla MR Scanner (General Electric Premier). A fMRI scan with a multiband 4 sequence will be acquired during the resting-state, multiband 4 is preferable for connectivity analyses⁷⁰. In addition, multiband sequences will considerably reduce the repetition time (TR), therefore they have the advantage of allowing dynamic functional connectivity analyses. Autistic differences in both ‘averaged’ functional connectivity and dynamic functional connectivity have been reliably reported across different datasets^{27,71}. Functional connectivity of brain networks in neurotypical individuals has also been shown to be acutely modulated by 5HT_{2A}R activation⁷². Notably, psilocybin alters dynamic functional connectivity, mediated by 5HT_{2A}R agonism⁷³. It facilitates state transitions and more temporally diverse brain activity in neurotypical individuals⁷⁴. Our study will be the first to examine the effects of psilocybin on conventional and dynamic functional metrics in autistic individuals.

Task-dependent MRI and EEG:

MRI: fMRI studies of face emotion processing in autism have produced inconsistent results. In the largest study to date, no differences between autistic and non-autistic individuals in fMRI response to facial expressions of emotion were observed¹³. However, we have recently examined the fMRI response to facial expressions of emotion in a social brain network before and after administration of the SSRI, citalopram. We reported that the dynamics of the response to faces is different in autism, in that 5HT reuptake inhibition slows habituation². Consistent with this, blockade of 5HT_{2A}Rs causes an ‘opposite’ effect and reduces neural responses to emotional faces during fMRI in neurotypical individuals⁷⁵. Therefore, we expect that psilocybin will alter the dynamics of face emotion processing, but differently in autistic individuals.

EEG: Event-related potentials (ERPs) in response to face stimuli will also be assessed during EEG. The N170 component, a neural response present at 170ms following the presentation of facial stimuli and can be modulated by 5HT_{2A}R activation^{61,76,77}. An altered N170 response is associated with social communication differences in autism and may have utility as a stratification marker that is amenable to support⁷⁸. It is also going to be the first prognostic biomarker for autism (or any neurodevelopmental or psychiatric condition) to be approved by regulatory agencies⁷⁸. The incorporation of this task in our protocol therefore will be an important test of whether an autism biomarker can be modified pharmacologically.

4.2.4. Perception

Psychophysical approaches are structured approaches in which stimulus characteristics are tightly controlled, and they provide robust, objective measures of sensory sensitivity by estimating perceptual metrics^{79,80}. Serotonin has been directly implicated in tactile perception, such as in affective touch, by studies using tryptophan depletion (which acutely reduces central serotonin levels) alongside psychophysical approaches⁸¹. Tactile detection threshold and amplitude discrimination will be assessed, as differences in tactile thresholds have already been reported in autism and are associated with outcomes⁸².

4.2.5. Additional measures

Questionnaires: The 5-dimensional altered states of consciousness (5D-ASC) questionnaire⁸³ will be completed on each visit following the completion of study procedures to quantify the subjective effects of psilocybin, which are primarily mediated by the 5HT_{2A}R⁸⁴.

Cognitive Battery: ‘Theory of mind’ (ie. cognitive empathy, the ability to understand and take into account the mental state of another individual) can be investigated using the ‘reading the mind in the eyes’ (RMET) task⁸⁵. Other cognitive processes in which differences are observed in autism such as language and executive and reward-related functioning (e.g. flexible choice behaviour) will be assessed with a verbal fluency task and probabilistic reversal learning task, respectively^{86,87}.

Peripheral biochemistry: Participants will be asked to provide a blood sample on one visit prior to placebo/drug administration (their preference). Whole blood serotonin levels will be determined for each individual, given that elevated levels are present in one-third of individuals with autism^{34,35}. This will allow us to explore whether any ‘shift’ in brain function in response to psilocybin depends on overall serotonin ‘tone’ as indexed by proxy.

Arousal measures: A wrist wearable will be used to passively collect heart rate data, from which autonomic nervous system function indices of heart rate and heart rate variability, can be derived. Heart rate variability is thought to reflect stress or arousal and is modulated by the serotonin system⁸⁸. These autonomic measures have also been reported to be different in autistic individuals compared to controls^{89,90}. Therefore, in this study we will examine the action of psilocybin on these indices of arousal and also consider if arousal interacts with other measurements acquired in the protocol.

4.3. Data analyses

The overarching goal of our analyses is to assess whether we see a ‘shift’ by psilocybin in autistic and non-autistic individuals for each modality. Both parametric and nonparametric statistical analyses will be used to test hypotheses that the serotonergic targets of psilocybin functioning differently in autistic individuals. Given the heterogeneity of the autistic population and our prior observations that there is a wide range of pharmacological responses in both autistic and non-autistic individuals, we will calculate individual ‘shift’ for each

modality, and what characteristics (eg. clinical scores, questionnaire responses, whole blood serotonin) these are associated with. Although we will generate and analyse data from single modalities, post-hoc we will also explore multimodal metrics (ie. associations between modalities) to understand how ‘shifts’ detected across multiple organisational levels are inter-related.

4.4. Power analyses

We will use a within-subject, repeated-measures design with a placebo condition so that each subject is their own control, thus increasing statistical power. Results from our prior neuroimaging studies using pharmacological challenge were successful in detecting group differences in MRI metrics with sample sizes of $n = < 20^{2-7,9,11}$. This implies an effects size (ES, expressed in Cohen’s d) in excess of 1.2. In sensory tasks a sample size of $n = 16$ per cell is estimated to achieve 80% power to detect a medium effect (0.5) at $\alpha = 0.05$; this has been achieved even in mixed sex groups of 20 participants or fewer. This reflects the literature in which significant group differences are evident even in mixed sex groups of 20 participants or fewer (e.g. $n = 16$)⁹¹⁻⁹³. Our design relies upon participants attending for repeat test sessions. Thus, there is a chance that participants may ‘drop-out’ and need to be replaced, this is accommodated with our sample size.

4.5. Limitations

Our protocol requires active participation despite the passive nature of several of our tasks. For example, participants will wear an EEG cap and will be asked to remain focused on the screen during the presentation of sensory stimuli. This may limit generalisability across ages or to autistic individuals with higher support needs.

Even in our very capable adult cohort, participants can get restless or become distracted. Hence, we have included concurrent eye tracking during EEG to control for the potential confound of participant variability in fixation on the screen. However, many of our tasks require minimal or no response from participants and so they are less likely to be impacted by confounds such as individual cognitive difficulties. We hope that this way, should our indices prove worthy of further investigation and/or incorporation in (for example) clinical trials,

they will be more accessible for individuals who may otherwise be excluded from drug development studies.

5. Conclusion

Our “shiftability” paradigm aims to determine how different organisational scales of brain function are modulated by neurochemical systems; and identify differences between autistic and non-autistic adults at an individual level. Our most recent shiftability study will use psilocybin to test the hypothesis that the serotonin system targeted by psilocybin is different in autistic and non-autistic people. We believe that the results will expand our understanding of brain biology in neurodivergent and neurotypical (autistic and non-autistic) individuals.

We also hope our work will inform a more personalized medicine approach to autism. Not everyone in our study will respond the same way to psilocybin. By capturing individual biology in both autistic and non-autistic people, this experimental medicine approach may help identify autistic individuals whose serotonin system functions no differently from non-autistic people, and who might therefore not be expected to show a clinical response in a clinical trial. And vice versa; those who respond biologically to psilocybin challenge might ultimately benefit clinically. To date, all clinical trials for the core features of autism have failed. This is in large part because they have included participants based on diagnosis alone and measured outcomes without evaluating mechanisms. In depth pharmacological ‘profiling’ adopting some of the methods described here may help avoid the unnecessary expense and likely failure of clinical trials and facilitate the discovery of novel pharmacological support options for those who would like that choice.

Acknowledgements: The PSILAUT study is an Independent Investigator Study (G.M.M.) funded in part by Compass Pathfinder Ltd. The authors also receive support from EU-AIMS (European Autism Interventions)/EU AIMS-2-TRIALS, an Innovative Medicines Initiative Joint Undertaking under Grant Agreement No. 777394. In addition, this paper represents independent research part funded by the infrastructure of the National Institute for Health Research (NIHR) Mental Health Biomedical Research Centre (BRC) at South London and Maudsley NHS Foundation Trust and King’s College London. The views expressed are those of the author(s) and not necessarily those of the NHS, the NIHR or the Department of Health and Social Care. T.P.W. and K.M. are employees of COMPASS Pathfinder Ltd. and hold shares in the company. N.A.P. has consulted for Deerfield Discovery and Research. D.G.M.M. has consulted for Jaguar Gene Therapy LLC. G.M.M. has received funding for investigator-initiated studies from GW Pharmaceuticals and COMPASS Pathfinder Ltd.. G.M.M. has consulted for Greenwich Biosciences, Inc.

References

1. American Psychiatric Association. *Diagnostic and Statistical Manual of Mental Disorders*. (American Psychiatric Association Publishing, 2022). doi:10.1176/appi.books.9780890425787.
2. Wong, N. M. L. *et al.* Serotonin differentially modulates the temporal dynamics of the limbic response to facial emotions in male adults with and without autism spectrum disorder (ASD): a randomised placebo-controlled single-dose crossover trial. *Neuropsychopharmacology* **45**, 2248–2256 (2020).
3. Wong, N. M. *et al.* Differences in social brain function in autism spectrum disorder are linked to the serotonin transporter: A randomised placebo-controlled single-dose crossover trial. *J. Psychopharmacol. (Oxf.)* **36**, 723–731 (2022).
4. Pretzsch, C. M. *et al.* Modulation of striatal functional connectivity differences in adults with and without autism spectrum disorder in a single-dose randomized trial of cannabidivarin. *Mol. Autism* **12**, 49 (2021).

5. Pretzsch, C. M. *et al.* The effect of cannabidiol (CBD) on low-frequency activity and functional connectivity in the brain of adults with and without autism spectrum disorder (ASD). *J. Psychopharmacol. (Oxf.)* **33**, 1141–1148 (2019).
6. Pretzsch, C. M. *et al.* Effects of cannabidiol on brain excitation and inhibition systems; a randomised placebo-controlled single dose trial during magnetic resonance spectroscopy in adults with and without autism spectrum disorder. *Neuropsychopharmacology* **44**, 1398–1405 (2019).
7. Pretzsch, C. M. *et al.* Effects of cannabidivarin (CBDV) on brain excitation and inhibition systems in adults with and without Autism Spectrum Disorder (ASD): a single dose trial during magnetic resonance spectroscopy. *Transl. Psychiatry* **9**, 313 (2019).
8. Wichers, R. H. *et al.* Modulation of brain activation during executive functioning in autism with citalopram. *Transl. Psychiatry* **9**, 286 (2019).
9. Wichers, R. H. *et al.* Modulation of atypical brain activation during executive functioning in autism: a pharmacological MRI study of tianeptine. *Mol. Autism* **12**, 14 (2021).
10. Huang, Q. *et al.* GABA_B receptor modulation of visual sensory processing in adults with and without autism spectrum disorder. *Sci. Transl. Med.* **14**, eabg7859 (2022).
11. Ajram, L. A. *et al.* Shifting brain inhibitory balance and connectivity of the prefrontal cortex of adults with autism spectrum disorder. *Transl. Psychiatry* **7**, e1137–e1137 (2017).
12. Loth, E. *et al.* The meaning of significant mean group differences for biomarker discovery. *PLOS Comput. Biol.* **17**, e1009477 (2021).
13. the EU-AIMS LEAP group *et al.* Social brain activation during mentalizing in a large autism cohort: the Longitudinal European Autism Project. *Mol. Autism* **11**, 17 (2020).
14. Mottron, L. A radical change in our autism research strategy is needed: Back to prototypes. *Autism Res.* **14**, 2213–2220 (2021).
15. Ciarrusta, J. *et al.* Emerging functional connectivity differences in newborn infants vulnerable to autism spectrum disorders. *Transl. Psychiatry* **10**, 131 (2020).
16. Ciarrusta, J. *et al.* The developing brain structural and functional connectome fingerprint. *Dev. Cogn. Neurosci.* **55**, 101117 (2022).

17. Dimitrova, R. *et al.* Heterogeneity in Brain Microstructural Development Following Preterm Birth. *Cereb. Cortex* **30**, 4800–4810 (2020).
18. Fenchel, D. *et al.* Neonatal multi-modal cortical profiles predict 18-month developmental outcomes. *Dev. Cogn. Neurosci.* **54**, 101103 (2022).
19. Fenn-Moltu, S. *et al.* Development of neonatal brain functional centrality and alterations associated with preterm birth. *Cereb. Cortex* bhac444 (2022) doi:10.1093/cercor/bhac444.
20. Batalle, D. *et al.* Different patterns of cortical maturation before and after 38 weeks gestational age demonstrated by diffusion MRI in vivo. *NeuroImage* **185**, 764–775 (2019).
21. Jones, E. J. H., Gliga, T., Bedford, R., Charman, T. & Johnson, M. H. Developmental pathways to autism: A review of prospective studies of infants at risk. *Neurosci. Biobehav. Rev.* **39**, 1–33 (2014).
22. Ciarrusta, J., Dimitrova, R. & McAlonan, G. Early maturation of the social brain: How brain development provides a platform for the acquisition of social-cognitive competence. in *Progress in Brain Research* vol. 254 49–70 (Elsevier, 2020).
23. Livingston, L. A., Shah, P. & Happé, F. Compensatory strategies below the behavioural surface in autism: a qualitative study. *Lancet Psychiatry* **6**, 766–777 (2019).
24. Kolesnik, A. *et al.* Increased cortical reactivity to repeated tones at 8 months in infants with later ASD. *Transl. Psychiatry* **9**, 46 (2019).
25. Piccardi, E. S. *et al.* Behavioural and neural markers of tactile sensory processing in infants at elevated likelihood of autism spectrum disorder and/or attention deficit hyperactivity disorder. *J. Neurodev. Disord.* **13**, 1 (2021).
26. França, L. G. S. *et al.* Neonatal brain dynamic functional connectivity: impact of preterm birth and association with early childhood neurodevelopment. <http://biorxiv.org/lookup/doi/10.1101/2022.11.16.516610> (2022) doi:10.1101/2022.11.16.516610.
27. Holiga, Š. *et al.* Patients with autism spectrum disorders display reproducible functional connectivity alterations. *Sci. Transl. Med.* **11**, eaat9223 (2019).
28. Zerbi, V. *et al.* Brain mapping across 16 autism mouse models reveals a spectrum of functional connectivity subtypes. *Mol. Psychiatry* **26**, 7610–7620 (2021).

29. Sinclair, D., Oranje, B., Razak, K. A., Siegel, S. J. & Schmid, S. Sensory processing in autism spectrum disorders and Fragile X syndrome—From the clinic to animal models. *Neurosci. Biobehav. Rev.* **76**, 235–253 (2017).
30. Huang, Q. *et al.* GABAergic regulation of auditory repetition suppression in adults with and without Autism Spectrum Disorder. <http://medrxiv.org/lookup/doi/10.1101/2023.02.15.23285928> (2023) doi:10.1101/2023.02.15.23285928.
31. Ahmad, J. *et al.* From mechanisms to markers: novel noninvasive EEG proxy markers of the neural excitation and inhibition system in humans. *Transl. Psychiatry* **12**, 467 (2022).
32. Devlin, B. *et al.* Autism and the serotonin transporter: the long and short of it. *Mol. Psychiatry* **10**, 1110–1116 (2005).
33. Anderson, B. M. *et al.* Examination of association of genes in the serotonin system to autism. *neurogenetics* **10**, 209–216 (2009).
34. Aaron, E. *et al.* Whole Blood Serotonin Levels and Platelet 5-HT_{2A} Binding in Autism Spectrum Disorder. *J. Autism Dev. Disord.* **49**, 2417–2425 (2019).
35. Veenstra-VanderWeele, J. *et al.* Autism gene variant causes hyperserotonemia, serotonin receptor hypersensitivity, social impairment and repetitive behavior. *Proc. Natl. Acad. Sci.* **109**, 5469–5474 (2012).
36. Canal, C. E. *et al.* An Orally Active Phenylaminotetralin-Chemotype Serotonin 5-HT₇ and 5-HT_{1A} Receptor Partial Agonist That Corrects Motor Stereotypy in Mouse Models. *ACS Chem. Neurosci.* **6**, 1259–1270 (2015).
37. Ciranna, L. & Catania, M. V. 5-HT₇ receptors as modulators of neuronal excitability, synaptic transmission and plasticity: physiological role and possible implications in autism spectrum disorders. *Front. Cell. Neurosci.* **8**, (2014).
38. Wojtas, A. *et al.* Effect of Psilocybin and Ketamine on Brain Neurotransmitters, Glutamate Receptors, DNA and Rat Behavior. *Int. J. Mol. Sci.* **23**, 6713 (2022).
39. Rubenstein, J. L. R. & Merzenich, M. M. Model of autism: increased ratio of excitation/inhibition in key neural systems: **Model of autism**. *Genes Brain Behav.* **2**, 255–267 (2003).

40. Gong, P., Liu, J., Blue, P. R., Li, S. & Zhou, X. Serotonin receptor gene (HTR2A) T102C polymorphism modulates individuals' perspective taking ability and autistic-like traits. *Front. Hum. Neurosci.* **9**, (2015).
41. Smith, R. M., Banks, W., Hansen, E., Sadee, W. & Herman, G. E. Family-Based Clinical Associations and Functional Characterization of the Serotonin 2A Receptor Gene (*HTR2A*) in Autism Spectrum Disorder: Clinical and functional genetics of *HTR2A*. *Autism Res.* **7**, 459–467 (2014).
42. Cieslinska, A. *et al.* Polymorphisms rs6313 and rs6314 in Serotonin Receptor Gene (HTR2A) and Serotonin Concentration in Autistic Children. *Neuropsychiatry* **09**, (2019).
43. Veenstra-VanderWeele, J. *et al.* Transmission disequilibrium studies of the serotonin 5-HT_{2A} receptor gene (HTR2A) in autism. *Am. J. Med. Genet.* **114**, 277–283 (2002).
44. Murphy, D. G. M. *et al.* Cortical Serotonin 5-HT_{2A} Receptor Binding and Social Communication in Adults With Asperger's Syndrome: An in Vivo SPECT Study. *Am. J. Psychiatry* **163**, 934–936 (2006).
45. Ishii, T. *et al.* Anatomical relationships between serotonin 5-HT_{2A} and dopamine D₂ receptors in living human brain. *PLOS ONE* **12**, e0189318 (2017).
46. Beliveau, V. *et al.* A High-Resolution *In Vivo* Atlas of the Human Brain's Serotonin System. *J. Neurosci.* **37**, 120–128 (2017).
47. Carhart-Harris, R. & Nutt, D. Serotonin and brain function: a tale of two receptors. *J. Psychopharmacol. (Oxf.)* **31**, 1091–1120 (2017).
48. Dinis-Oliveira, R. J. Metabolism of psilocybin and psilocin: clinical and forensic toxicological relevance. *Drug Metab. Rev.* **49**, 84–91 (2017).
49. Halberstadt, A. L. & Geyer, M. A. Multiple receptors contribute to the behavioral effects of indoleamine hallucinogens. *Neuropharmacology* **61**, 364–381 (2011).
50. Madsen, M. K. *et al.* Psychedelic effects of psilocybin correlate with serotonin 2A receptor occupancy and plasma psilocin levels. *Neuropsychopharmacology* **44**, 1328–1334 (2019).
51. Prochazkova, L. *et al.* Exploring the effect of microdosing psychedelics on creativity in an open-label natural setting. *Psychopharmacology (Berl.)* **235**, 3401–3413 (2018).

52. Moreno, F. A., Wiegand, C. B., Taitano, E. K. & Delgado, P. L. Safety, Tolerability, and Efficacy of Psilocybin in 9 Patients With Obsessive-Compulsive Disorder. *J. Clin. Psychiatry* **67**, 1735–1740 (2006).
53. Cavanna, F. *et al.* Microdosing with psilocybin mushrooms: a double-blind placebo-controlled study. *Transl. Psychiatry* **12**, 307 (2022).
54. Bershad, A. K. *et al.* Preliminary Report on the Effects of a Low Dose of LSD on Resting-State Amygdala Functional Connectivity. *Biol. Psychiatry Cogn. Neurosci. Neuroimaging* **5**, 461–467 (2020).
55. Murray, C. H. *et al.* Low doses of LSD reduce broadband oscillatory power and modulate event-related potentials in healthy adults. *Psychopharmacology (Berl.)* **239**, 1735–1747 (2022).
56. Lord, C., Rutter, M. & Le Couteur, A. Autism Diagnostic Interview-Revised: A revised version of a diagnostic interview for caregivers of individuals with possible pervasive developmental disorders. *J. Autism Dev. Disord.* **24**, 659–685 (1994).
57. Bastiaansen, J. A. *et al.* Diagnosing Autism Spectrum Disorders in Adults: the Use of Autism Diagnostic Observation Schedule (ADOS) Module 4. *J. Autism Dev. Disord.* **41**, 1256–1266 (2011).
58. Chan, K. L., Puts, N. A. J., Schär, M., Barker, P. B. & Edden, R. A. E. HERMES: Hadamard encoding and reconstruction of MEGA-edited spectroscopy: HERMES. *Magn. Reson. Med.* **76**, 11–19 (2016).
59. Baumgarten, T. J. *et al.* Beta Peak Frequencies at Rest Correlate with Endogenous GABA+/Cr Concentrations in Sensorimotor Cortex Areas. *PLOS ONE* **11**, e0156829 (2016).
60. Michaiel, A. M., Parker, P. R. L. & Niell, C. M. A Hallucinogenic Serotonin-2A Receptor Agonist Reduces Visual Response Gain and Alters Temporal Dynamics in Mouse V1. *Cell Rep.* **26**, 3475-3483.e4 (2019).
61. Komater, M., Schmidt, A., Jancke, L. & Vollenweider, F. X. Activation of Serotonin 2A Receptors Underlies the Psilocybin-Induced Effects on Oscillations, N170 Visual-Evoked Potentials, and Visual Hallucinations. *J. Neurosci.* **33**, 10544–10551 (2013).

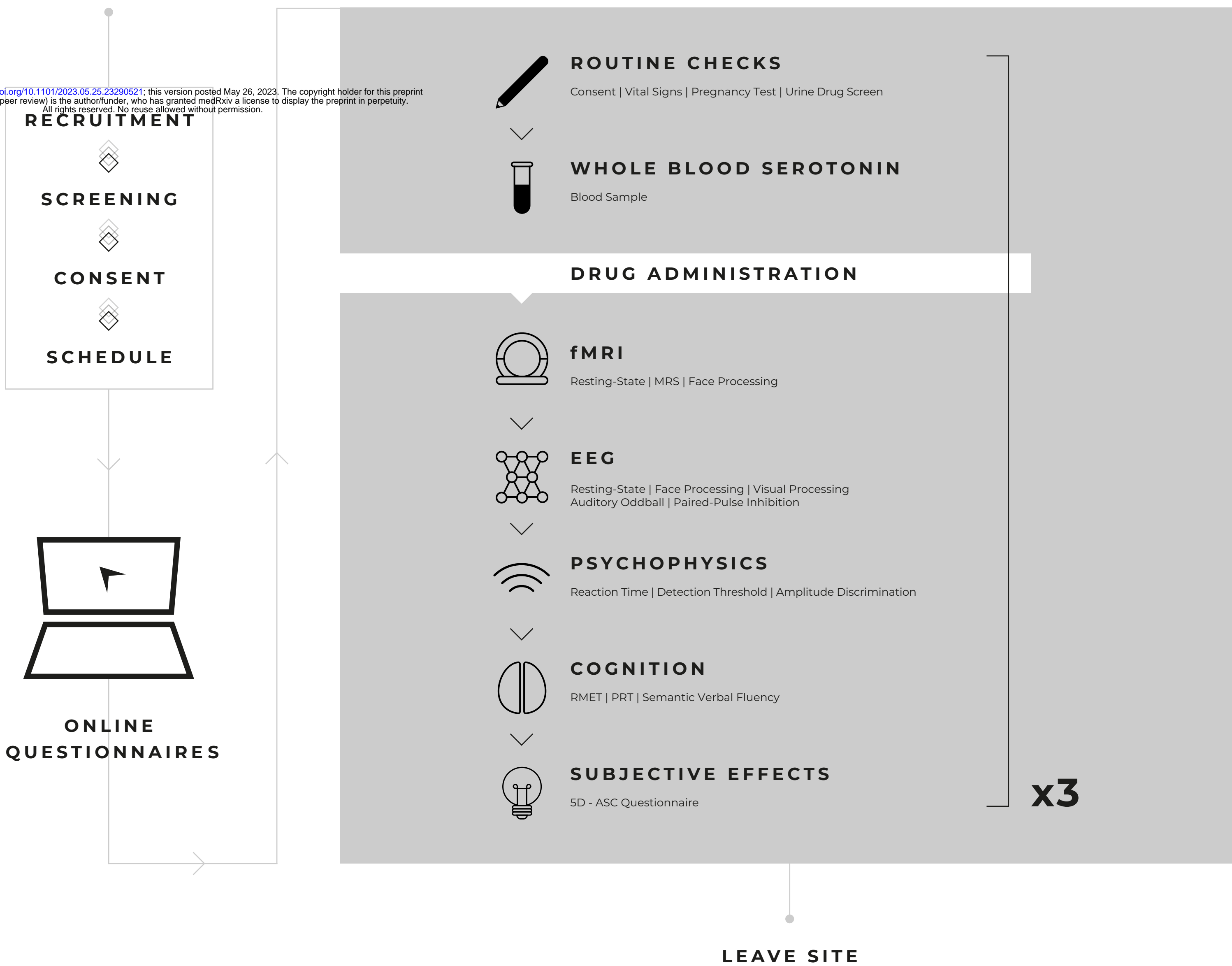
62. Garrido, M. I., Kilner, J. M., Stephan, K. E. & Friston, K. J. The mismatch negativity: A review of underlying mechanisms. *Clin. Neurophysiol.* **120**, 453–463 (2009).
63. Dunn, M. A., Gomes, H. & Gravel, J. Mismatch Negativity in Children with Autism and Typical Development. *J. Autism Dev. Disord.* **38**, 52–71 (2008).
64. Oram Cardy, J. E., Flagg, E. J., Roberts, W. & Roberts, T. P. L. Delayed mismatch field for speech and non-speech sounds in children with autism: *NeuroReport* **16**, 521–525 (2005).
65. Vlaskamp, C. *et al.* Auditory processing in autism spectrum disorder: Mismatch negativity deficits: Auditory Processing in Autism Spectrum Disorder. *Autism Res.* **10**, 1857–1865 (2017).
66. Wienberg, M., Glenthøj, B., Jensen, K. & Oranje, B. A single high dose of escitalopram increases mismatch negativity without affecting processing negativity or P300 amplitude in healthy volunteers. *J. Psychopharmacol. (Oxf.)* **24**, 1183–1192 (2010).
67. Duerler, P. *et al.* Psilocybin Induces Aberrant Prediction Error Processing of Tactile Mismatch Responses—A Simultaneous EEG–fMRI Study. *Cereb. Cortex* **32**, 186–196 (2021).
68. Padmanabhan, A., Lynch, C. J., Schaer, M. & Menon, V. The Default Mode Network in Autism. *Biol. Psychiatry Cogn. Neurosci. Neuroimaging* **2**, 476–486 (2017).
69. Muthukumaraswamy, S. D. *et al.* Broadband Cortical Desynchronization Underlies the Human Psychedelic State. *J. Neurosci.* **33**, 15171–15183 (2013).
70. Risk, B. B. *et al.* Which multiband factor should you choose for your resting-state fMRI study? *NeuroImage* **234**, 117965 (2021).
71. Watanabe, T. & Rees, G. Brain network dynamics in high-functioning individuals with autism. *Nat. Commun.* **8**, 16048 (2017).
72. Carhart-Harris, R. L. *et al.* Neural correlates of the psychedelic state as determined by fMRI studies with psilocybin. *Proc. Natl. Acad. Sci.* **109**, 2138–2143 (2012).
73. Kringelbach, M. L. *et al.* Dynamic coupling of whole-brain neuronal and neurotransmitter systems. *Proc. Natl. Acad. Sci.* **117**, 9566–9576 (2020).
74. Singleton, S. P. *et al.* Receptor-informed network control theory links LSD and psilocybin to a flattening of the brain’s control energy landscape. *Nat. Commun.* **13**, 5812 (2022).

75. Hornboll, B. *et al.* Acute serotonin 2A receptor blocking alters the processing of fearful faces in the orbitofrontal cortex and amygdala. *J. Psychopharmacol. (Oxf.)* **27**, 903–914 (2013).
76. Bernasconi, F. *et al.* Spatiotemporal Brain Dynamics of Emotional Face Processing Modulations Induced by the Serotonin 1A/2A Receptor Agonist Psilocybin. *Cereb. Cortex* **24**, 3221–3231 (2014).
77. Schmidt, A., Kometer, M., Bachmann, R., Seifritz, E. & Vollenweider, F. The NMDA antagonist ketamine and the 5-HT agonist psilocybin produce dissociable effects on structural encoding of emotional face expressions. *Psychopharmacology (Berl.)* **225**, 227–239 (2013).
78. Mason, L. *et al.* Stratifying the autistic phenotype using electrophysiological indices of social perception. *Sci. Transl. Med.* **14**, eabf8987 (2022).
79. Puts, N. A. J., Wodka, E. L., Tommerdahl, M., Mostofsky, S. H. & Edden, R. A. E. Impaired tactile processing in children with autism spectrum disorder. *J. Neurophysiol.* **111**, 1803–1811 (2014).
80. Cascio, C. *et al.* Tactile Perception in Adults with Autism: a Multidimensional Psychophysical Study. *J. Autism Dev. Disord.* **38**, 127–137 (2008).
81. Trotter, P. D. *et al.* Acute tryptophan depletion alters affective touch perception. *Psychopharmacology (Berl.)* **239**, 2771–2785 (2022).
82. He, J. L. *et al.* Disorder-specific alterations of tactile sensitivity in neurodevelopmental disorders. *Commun. Biol.* **4**, 97 (2021).
83. Dittrich, A. The Standardized Psychometric Assessment of Altered States of Consciousness (ASCs) in Humans. *Pharmacopsychiatry* **31**, 80–84 (1998).
84. Vollenweider, F. X., Vollenweider-Scherpenhuyzen, M. F. I., Bäbler, A., Vogel, H. & Hell, D. Psilocybin induces schizophrenia-like psychosis in humans via a serotonin-2 agonist action: *NeuroReport* **9**, 3897–3902 (1998).
85. Baron-Cohen, S., Wheelwright, S., Hill, J., Raste, Y. & Plumb, I. The ‘Reading the Mind in the Eyes’ Test revised version: a study with normal adults, and adults with Asperger syndrome or high-functioning autism. *J. Child Psychol. Psychiatry* **42**, 241–251 (2001).

86. den Ouden, H. E. M. *et al.* Dissociable Effects of Dopamine and Serotonin on Reversal Learning. *Neuron* **80**, 1090–1100 (2013).
87. Begeer, S. *et al.* Verbal fluency in children with autism spectrum disorders: Clustering and switching strategies. *Autism* **18**, 1014–1018 (2014).
88. Chang, C.-C. *et al.* Serotonin 2A receptor (5-HT_{2A}) gene promoter variant interacts with chronic perceived stress to modulate resting parasympathetic activity in humans. *Psychoneuroendocrinology* **76**, 119–126 (2017).
89. Thapa, R. *et al.* Heart Rate Variability in Children With Autism Spectrum Disorder and Associations With Medication and Symptom Severity. *Autism Res.* **14**, 75–85 (2021).
90. Chiu, H. T. *et al.* Resting Heart Rate Variability and Emotion Dysregulation in Adolescents with Autism Spectrum Disorder. *J. Autism Dev. Disord.* (2023) doi:10.1007/s10803-022-05847-x.
91. Robertson, C. E., Kravitz, D. J., Freyberg, J., Baron-Cohen, S. & Baker, C. I. Tunnel Vision: Sharper Gradient of Spatial Attention in Autism. *J. Neurosci.* **33**, 6776–6781 (2013).
92. Foss-Feig, J. H., Tadin, D., Schauder, K. B. & Cascio, C. J. A Substantial and Unexpected Enhancement of Motion Perception in Autism. *J. Neurosci.* **33**, 8243–8249 (2013).
93. Karaminis, T., Lunghi, C., Neil, L., Burr, D. & Pellicano, E. Binocular rivalry in children on the autism spectrum: Binocular rivalry in autism. *Autism Res.* **10**, 1096–1106 (2017).

PARTICIPANT VISIT

medRxiv preprint doi: <https://doi.org/10.1101/2023.05.25.23290521>; this version posted May 26, 2023. The copyright holder for this preprint (which was not certified by peer review) is the author/funder, who has granted medRxiv a license to display the preprint in perpetuity. All rights reserved. No reuse allowed without permission.



RECRUITMENT



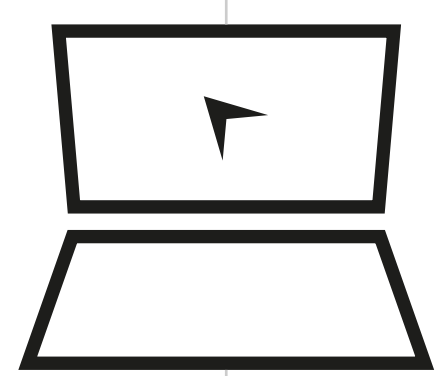
SCREENING



CONSENT



SCHEDULE



ONLINE QUESTIONNAIRES

ROUTINE CHECKS



Consent | Vital Signs | Pregnancy Test | Urine Drug Screen

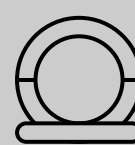


WHOLE BLOOD SEROTONIN



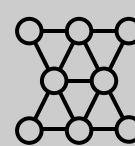
Blood Sample

DRUG ADMINISTRATION



fMRI

Resting-State | MRS | Face Processing



EEG

Resting-State | Face Processing | Visual Processing
Auditory Oddball | Paired-Pulse Inhibition



PSYCHOPHYSICS

Reaction Time | Detection Threshold | Amplitude Discrimination



COGNITION

RMET | PRT | Semantic Verbal Fluency



SUBJECTIVE EFFECTS

5D - ASC Questionnaire

x3

LEAVE SITE



NEUROTRANSMITTERS

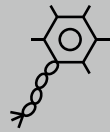
MRS
PET

Brain microdialysis
Post-mortem



GENES

Molecular / Chromosome /
Gene expression tests



SINGLE CELLS

Stem Cells Intra /
Extracellular Recordings
Current / Voltage / Patch Clamps
Animal models



LOCAL CIRCUITS

EEG:
Resting-state &
Passive sensory tasks
TMS



GLOBAL NETWORKS

EEG & MRI:
Resting-state &
Passive complex stimuli tasks



PERCEPTION

Psychophysics



BEHAVIOUR

Clinical characteristics
Questionnaires
Cognitive tests

