

Cortical thickness and cognitive decline in Parkinson patients with deep brain stimulation in the MARK-PD study

Robert Schulz[#], Merve Uyar, José A. Graterol Perez, Monika Pötter-Nerger, Carsten Buhmann, Christian Gerloff, Chi-un Choe

Department of Neurology, University Medical Center Hamburg Eppendorf, Martinistr. 52, 20246 Hamburg, Germany

[#] **Corresponding author:** Robert Schulz; University Medical Center Hamburg-Eppendorf; Martinistr 52, 20246 Hamburg, Germany; Phone: +49-40-7410-55573; Email: rschulz@uke.de

Advanced Parkinson's disease (PD) and deep brain stimulation (DBS) are associated with cognitive impairment. We aimed to evaluate whether regional cortical thickness is associated with cognitive decline in patients with advanced PD treated with DBS. From the MARK-PD study, 32 patients with DBS implantation were included. Cortical thickness of 148 brain areas and cognitive function were assessed with MRI data using the FreeSurfer pipeline and Montreal Cognitive Assessment at baseline and follow-up (median 17 months), respectively. Adjusted linear and Cox regression models were calculated. Thinner orbitofrontal, cingulate, and occipito-temporal cortices as well as cuneus is related to significant cognitive decline. Moreover, lower thickness of these cortices is also associated with faster cognitive decline. Our study suggests that PD patients treated with DBS and lower cortical thickness in multiple brain regions develop at stronger and faster cognitive decline during the later course of the disease.

Introduction

Structural brain imaging in Parkinson's disease (PD) has contributed to our understanding of how cortical brain regions undergo structural alterations and to what extent these changes are associated with cognitive decline, a common and disabling feature of advanced PD^{1,2}. Deep brain stimulation (DBS) frequently utilized in more impaired patients carries an additional risk of treatment-induced cognitive decline³. For PD in general, evidence from cross-sectional⁴⁻⁸ and longitudinal studies⁹⁻¹⁵ underlines that reduced cortical thickness (CT) or grey matter volume occur in orbitofrontal, occipito-temporal, parietal and cingulate cortices, which are associated with cognitive decline. For patients treated with DBS, studies have related electrode positions to odds of DBS induced cognitive decline. For instance, electrode trajectories intersecting with caudate nuclei increase the risk of a decline after surgery in global cognition and working memory performance¹⁶. More recent network analyses showed that stimulation sites affecting structural brain networks involving the caudate nuclei, orbitofrontal, cingulate, parietal cortices, the hippocampus, and cognitive regions of the cerebellum are at particular risk for cognitive decline¹⁷. However, it remains unclear if measures of cortical anatomy of such brain regions operationalized by CT might relate to cognitive decline in PD patients treated with DBS. Therefore, we have longitudinally evaluated cognitive assessments of PD patients who were already treated with DBS from the observational MARK-PD cohort study.¹⁵ Structural MRI data collected before DBS and study inclusion were integrated into regression models. We hypothesized that lower CT values of orbitofrontal, cingulate, and occipito-temporal cortices relate to future cognitive decline in PD patients treated with DBS.

Participants and methods

Participants and clinical assessment

The Biomarkers in Parkinson's disease (MARK-PD) study is a prospective observational single-centre study with biobanking at the University Medical Centre Hamburg-Eppendorf¹⁸. For the current study, we have included 32 PD patients who had undergone DBS treatment in the past. Cognitive assessment was performed at baseline (timepoint T₁) and follow-up (timepoint T₂). The study

protocol was approved by the local ethics committee (PV5298). The investigation was conducted in accordance with the Declaration of Helsinki. Written informed consent was obtained from all participants. Clinical assessment was performed as previously described¹⁸. Cognitive assessment (Montreal Cognitive Assessment, MoCA) was performed in the medication and stimulation ON state. Past medical history and medication were documented from medical records.

Imaging acquisition & cortical thickness analysis

Clinical data were integrated with retrospective available structural MRI data collected for routine clinical purposes, before DBS, in the past (median 399, range 959 – 14 days) before T₁. The datasets were obtained from two different scanners: 31 patients were scanned with a 3T Skyra scanner (Siemens, Erlangen, Germany) applying a 3-dimensional magnetization-prepared rapid gradient echo (3D-MPRAGE) sequence (repetition time (TR)=1900 ms, echo time (TE)=2.46 ms, inversion time (TI)=900 ms, flip angle 9°, field of view (FOV)=240 mm, voxel dimension of 0.94 mm³). One patient was scanned using a 3T Ingenia scanner (Philips, Amsterdam, Netherlands) using a standard 3D T1-weighted protocol with a TR of 8.04 – 8.10 ms, TE of 3.69 – 3.7 ms, flip angle 8°, FOV 238 - 248 mm and a voxel dimension of 0.94x0.94x1 mm. Datasets were processed with FreeSurfer version 7.1.0 (<http://surfer.nmr.mgh.harvard.edu/>) using the default options to measure CT. The reconstructions were visually inspected and, if required, manually corrected following established recommendations from the FreeSurfer's documentation. Surface data was smoothed with a full-width-half-maximum Gaussian kernel of 10 mm. Mean CT values were finally calculated over 148 anatomical labels including gyri and sulci using the Destrieux cortical parcellation²⁰.

Statistical analysis

Statistical analyses were carried out in R version 4.0.3 (R Core Team, 2020; [r-project.org](https://www.R-project.org/)) or with IBM SPSS Statistics (Version 27, www.ibm.com/products/spss-statistics) to correlate regional CT values with change in MoCA between T₁ and

NOTE: This preprint reports new research that has not been certified by peer review and should not be used to guide clinical practice.

T₂. As previously shown¹⁹ we have splitted the patient group by the CT median in groups with thinner and thicker CT than the median. Change of MoCA between T₁ and T₂ was treated as the dependent variable, dichotomized binary CT was treated as the independent variable of interest. The target effect CT was corrected for age, disease duration, time interval between MRI scan and T₁ (MRI-T₁), time interval T₁-T₂ and MoCA at T₁. Results are given as mean differences between groups (with 95% confidence intervals, CI) with values > 0 indicating increased decline in MoCA in patients exhibiting lower CT values compared to patients with higher values. The independent association between CT and time-to-cognitive decline, defined as a decrease of more than 2 points in the MoCA score during the observational period¹⁸, was determined by multivariable Cox regression analyses. Results are given as hazard ratios with 95% confidence intervals (CI), regressions were adjusted for age, disease duration, MRI-T₁ and MoCA at T₁. Kaplan-Meier curves were used for illustration. Statistical significance was assumed at *P* value < 0.05. Fsbain package in R was used for illustrations.

Results

Baseline characteristics and cognitive decline

For this study, 32 PD patients with DBS before study inclusion were analysed. These patients were on average 63.5 ± 9.1 years old, 20 were male, MDS-UPDRS III scores were (median [interquartile range]) 20 [15, 26], Hoehn&Yahr stages were 2 [2, 3] and disease duration was 13 [9, 15] years (Table 1). Follow-up time was 529 [341, 728] days. The MoCA score at T₁ was 27 [25, 29] and at T₂ 25.5 [22, 28].

Characteristics	T ₁	
Age, years	63.5 ± 9.1	
Male	20	
Disease duration, years	13 [9, 15]	
Education, days	13.5 [12.25, 14.5]	
Hypertension, %	12	
Diabetes, %	1	
Prior stroke, %	1	
Time T1 to MRI, days	-399 [-273, -716]	
LED, mg/d	801 [499, 1000]	
Follow-up, days	529 [341, 728]	
	T ₁	T ₂
UPDRS III, points	20 [15, 26]	27 [17, 30]
Hoehn&Yahr, stage	2 [2, 3]	2.5 [2, 3]
MoCA, points	27 [25, 29]	25.5 [22, 28]

Table 1 | Demographic and clinical characteristics

Data are mean (SD), n (%) or median [IQR], as appropriate. Categorical variables are given as numbers (percentages) of participants. Abbreviations LED, L-dopa equivalence dose; MoCA, Montreal cognitive assessment; MDS-UPDRS, Movement Disorders Society-Unified Parkinson's disease Ranking Scale.

Cortical thickness and cognitive decline

Lower CT values in selected orbitofrontal, cingulate, and occipito-temporal cortices were significantly related to larger cognitive decline of MoCA scores between T₁ and T₂ (Figure 1). Specifically, patients with thinner cortices in regions summarized by Table 2 exhibited an absolute decrease in MoCA score from T₁ to T₂ of up to 3.9 points. Conversely, patients with higher CT values did not exhibit any significant cognitive decline during the observational period. Absolute decrease in MoCA scores ranged between 3.9 and 3.4 (*P*<0.05 for all 9 regions) in patients with thinner cortices. For patients with higher CT, values ranged between 0.7 and 0.2 points (not significant). Importantly, patients allocated to groups according to CT values below and above the median did not differ in MoCA at T₁ scoring at the beginning of the observational period. Moreover, none of the covariates evaluated reached statistical significance in the models.

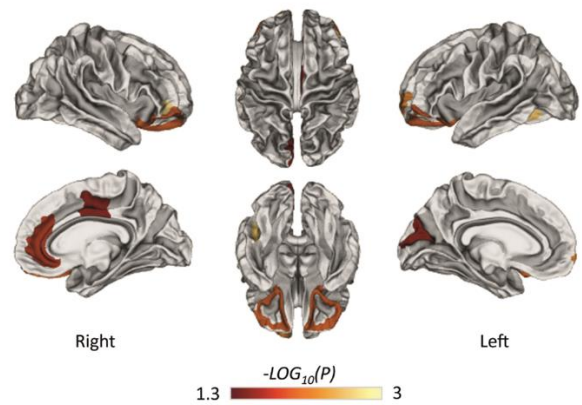


Figure 1 | Regional CT and extend of cognitive decline

Brain regions exhibiting significant associations between CT and change in MoCA during the observational period are illustrated with $-\text{LOG}_{10}(P)$ values color-coded. Right and left hemispheres are given. Upper row shows lateral and top views, lower row shows views from the mid sagittal plane and from the bottom.

Cortical thickness and time to cognitive decline

Finally, time-to-event analyses were carried out to answer if the CT estimates, which are associated with a larger extent of cognitive decline, are also linked with a faster cognitive decline. In adjusted Cox regression analysis, six of these regions showed a significant relationship between lower CT values at baseline and faster cognitive decline until follow-up (Table 2, Figure 2).

Region	CT	MoCA change		Time-to-cognitive decline	
		Mean Difference (95% CI)	<i>P</i>	Hazard Ratio (95% CI)	<i>P</i>
Lateral occipito-temporal and fusiform gyrus (right)	2.55	3.8 (1.3 6.2)	0.005	4.5 (1.1, 19.4)	0.043
Anterior cingulate gyrus and sulcus (right)	2.58	3.6 (0.6 6.6)	0.019	11.3 (2.1, 60.8)	0.005
Lateral orbital sulcus (right)	2.10	3.6 (1.4 5.7)	0.002	8.3 (1.4, 47.8)	0.019
Lateral occipito-temporal sulcus (left)	2.29	3.6 (1.4 5.8)	0.003	6.3 (1.2, 32.4)	0.027
Transverse frontopolar Gyrus and sulcus (left)	2.51	3.3 (1.0 5.7)	0.008	7.2 (1.5, 34.9)	0.015
Orbital gyrus (left)	2.53	3.1 (0.6 5.5)	0.015	8.5 (1.2, 59.5)	0.031
Orbital gyrus (right)	2.57	3.0 (0.7 5.3)	0.012	5.4 (0.9, 32.3)	0.062
Middle posterior cingulate Gyrus and sulcus (right)	2.40	2.8 (0.3 5.3)	0.030	2.7 (0.7, 10.3)	0.150
Cuneus (left)	1.67	2.7 (0.2 5.1)	0.032	1.7 (0.4, 7.7)	0.473

Table 2 | Regional cortical thickness associates with cognitive decline

Linear regression analysis of MoCA change (mean difference with 95% confidence intervals, CI) and Cox regression analysis for time-to-cognitive decline (hazard ratio (HR) with 95% CI) are given for patients with lower CT values compared to patients with higher values (reference). *P* values are uncorrected. CT indicates CT median values (in mm) used for group allocation.

Discussion

The main finding of the present study is that thinner orbitofrontal, cingulate, and occipito-temporal cortices as well as cuneus are related to cognitive decline in PD patients previously implanted with DBS. Interestingly, patients with higher CT values did not exhibit any change in MoCA, whereas patients with lower values showed an absolute decrease of up to 4 points. Moreover, thinner cortices in some of these regions link to faster cognitive decline.

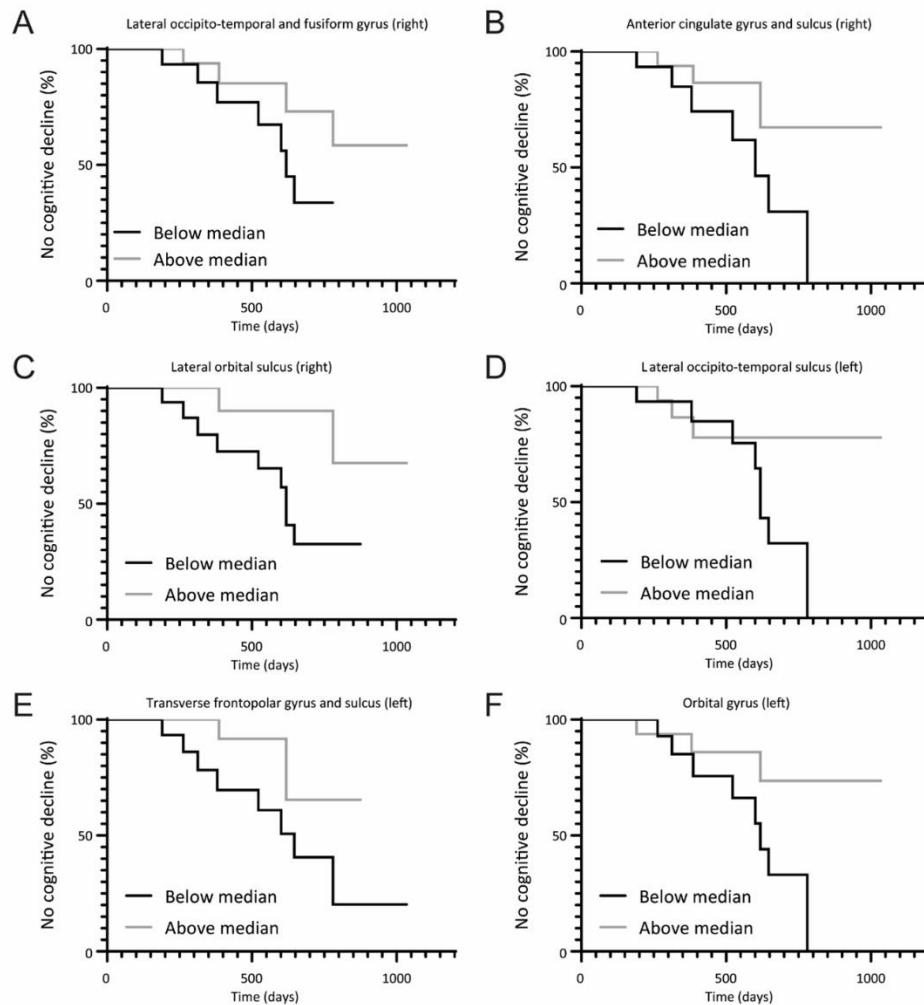


Figure 2 | Regional CT and time to cognitive decline

A-F Kaplan-Meier plots illustrating time-to-cognitive decline in PD patients with regional CT below and above the median for six different regions.

These data complement recent structural network data in PD patients acquired right after DBS of the subthalamic nucleus showing that electrode position and stimulation site critically influence the risk of DBS-induced cognitive decline after surgery. Specifically, stimulation sites connected to the bilateral orbitofrontal cortices and cingulate cortices of the right hemisphere were associated with cognitive decline¹⁷. In excellent agreement with previous results, an impaired structural state of orbitofrontal and cingulate cortices was associated with a worse cognitive outcome in DBS treated PD patients. Studies in PD patients without DBS revealed that cortical thinning was observed in regions along the superior frontal gyrus, caudal anterior cingulate cortex, medial occipital and temporal cortices in individuals converting to mild cognitive impairment (MCI) or dementia^{9,10}. Furthermore, PD patients with MCI showed grey matter atrophy in the orbitofrontal cortex, cuneus and fusiform gyrus when compared to patients without MCI⁸. Similarly, PD patients with conversion from MCI to dementia showed CT reductions in orbitofrontal regions. One longitudinal study has directly related the extent of cortical thinning in temporal and medial occipital cortices over time to cognitive decline¹³. Corroborating these data and accounting particularly for baseline MoCA, age and disease duration, our results argue that preserved structural brain integrity of orbitofrontal, cingulate and occipito-temporal cortices as well as cuneus might attenuate cognitive decline in PD. Our findings are in line with emerging concepts of brain reserve capacity for neurological diseases²¹⁻²³. We suggest potential cut-off

values for CT, which need validation in larger prospective studies. Today, there is still a need to identify patients who are at increased risk of cognitive decline after DBS surgery. In addition to the known clinical parameters such as MoCA scores, CT of orbitofrontal, cingulate, and occipito-temporal cortices as well as cuneus might be a useful complementary predictor in the future to infer the individual patients' cognitive risk. For instance, one pre-post DBS analysis in 59 PD patients of similar age, disease duration and Hoehn & Yahr stage showed an average decline in MoCA of only 0.8 within 6 months after DBS³. The present longitudinal analysis of clinical data obtained from advanced PD patients previously implanted with DBS evidenced a decline in MoCA of almost 4 points in patients with lower CT values. This might render CT before DBS particularly helpful in detecting patients at highest risks to develop cognitive decline after DBS.

There are several critical limitations to note. First, MRI data were acquired up to 2.6 years before T₁. Statistical modelling accounted for this variability in MRI-T₁. We did not observe any significant influence of this factor for change of MoCA between T₁ and T₂. Nevertheless, our results require validation in larger prospective studies comprising clinical and MRI data at one time point. Second, our cohort included patients who had already undergone DBS with variable time intervals between DBS surgery and study inclusion. An appropriate control group of PD patients with similar demographic and disease-specific characteristics is

missing. Although the present findings are in very good agreement with previous DBS-specific network data¹⁷, we cannot infer any DBS specificity for the present structure-outcome relationships. Third, data of electrode sites, volumes of activated tissue and affected brain networks were not integrated in the present analyses. Such information might be helpful to further investigate whether lower CT in *patients at risk* regarding their network characteristics¹⁷ might further aggravate cognitive decline analogous to a *second hit*. Fourth, the observational period showed a large variability (median 17 months, range 6-34 months). However, we adjusted our models for T₁-T₂, which did not influence the results. Fifth, we used CT values as dichotomized binary variables to increase the statistical power and to overcome the limitation of potential outliers and influential points. Group allocation of individual patients based on median split is specific to the present cohort. Thus, the present results might change in external independent datasets. Sixth, *P* values are presented uncorrected for multiple comparisons due to the exploratory design. Finally, the present analyses were focused on CT estimates of cortical anatomy. Information regarding other brain structures such as subcortical nuclei were not considered in this work. A combined modelling of cortical and subcortical brain anatomy would require larger samples to shed novel light on structural determinants of cognitive functioning and decline in PD.

Overall, our study suggests that PD patients previously treated with DBS and thinner orbitofrontal, cingulate and occipito-temporal cortices as well as cuneus develop at stronger and faster cognitive decline during the later course of the disease.

Funding

CUC and RS are supported by an Else Kröner Exzellenzstipendium from the Else Kröner-Fresenius-Stiftung (grant numbers 2018_EKES.04 to CUC, 2020_EKES.16 to RS).

Conflict of Interest

RS, MU and JGP have nothing to declare. MPN received lecture fees from Abbvie, Abbott and Boston scientific and served as consultant for Medtronic, Boston scientific, Licher, Zambon and Abbvie. CB served on scientific advisory boards for Bial, Desitin, Kyowa Kirin, Merz, STADA Pharm and Zambon and received honoraria for lectures from Abbvie, Bial, Desitin, TAD Pharma, UCB Pharma and Zambon. CG reports personal fees from AMGEN, personal fees from Boehringer Ingelheim, Novartis, Daiichi Sankyo, Abbott, Prediction Biosciences and Bayer. CUC reports personal fees from Pfizer and Zambon.

Author contributions

RS and CUC designed and organized the project, designed, and performed the statistical analyses and wrote the first draft. MU and JGP executed the project and contributed to the statistical analyses. MPN, CB and CG contributed to the statistical analyses. All authors revised the manuscript for important intellectual content.

Data availability

The data that support the findings of this study are available on reasonable request from the corresponding author.

References

1. Aarsland D, Creese B, Politis M, et al. Cognitive decline in Parkinson disease. *Nat Rev Neurol*. 2017;13(4):217-231. doi:10.1038/nrneuro.2017.27
2. Litvan I, Goldman JG, Tröster AI, et al. Diagnostic criteria for mild cognitive impairment in Parkinson's disease: Movement Disorder Society Task Force guidelines. *Movement Disorders*. 2012;27(3):349-356. doi:10.1002/mds.24893
3. Gülke E, Alsalem M, Kirsten M, et al. Comparison of Montreal cognitive assessment and Mattis dementia rating scale in the preoperative evaluation of subthalamic stimulation in Parkinson's disease. *PLoS One*. 2022;17(4):e0265314. doi:10.1371/journal.pone.0265314
4. Mak E, Su L, Williams GB, et al. Baseline and longitudinal grey matter changes in newly diagnosed Parkinson's disease: ICICLE-PD study. *Brain*. 2015;138(10):2974-2986. doi:10.1093/brain/aww211
5. Zarei M, Ibarretxe-Bilbao N, Compta Y, et al. Cortical thinning is associated with disease stages and dementia in Parkinson's disease. *J Neurol Neurosurg Psychiatry*. 2013;84(8):875-882. doi:10.1136/jnnp-2012-304126
6. Wilson H, Niccolini F, Pellicano C, Politis M. Cortical thinning across Parkinson's disease stages and clinical correlates. *J Neurol Sci*. 2019;398:31-38. doi:10.1016/j.jns.2019.01.020
7. Chaudhary S, Kumaran SS, Goyal V, et al. Cortical thickness and gyrification index measuring cognition in Parkinson's disease. *International Journal of Neuroscience*. 2021;131(10):984-993. doi:10.1080/00207454.2020.1766459
8. Zhang J, Zhang YT, Hu WD, Li L, Liu GY, Bai YP. Gray matter atrophy in patients with Parkinson's disease and those with mild cognitive impairment: a voxel-based morphometry study. *Int J Clin Exp Med*. 2015;8(9):15383-15392.
9. Gorges M, Kunz MS, Müller H, et al. Longitudinal brain atrophy distribution in advanced Parkinson's disease: What makes the difference in "cognitive status" converters? *Hum Brain Mapp*. 2020;41(6):1416-1434. doi:10.1002/hbm.24884
10. Compta Y, Pereira JB, Ríos J, et al. Combined dementia-risk biomarkers in Parkinson's disease: A prospective longitudinal study. *Parkinsonism Relat Disord*. 2013;19(8):717-724. doi:10.1016/j.parkreldis.2013.03.009
11. Filippi M, Canu E, Donzuso G, et al. Tracking Cortical Changes Throughout Cognitive Decline in Parkinson's Disease. *Movement Disorders*. 2020;35(11):1987-1998. doi:10.1002/mds.28228
12. Chung SJ, Yoo HS, Lee YH, et al. Frontal atrophy as a marker for dementia conversion in Parkinson's disease with mild cognitive impairment. *Hum Brain Mapp*. Published online May 14, 2019;hbm.24631. doi:10.1002/hbm.24631
13. Hanganu A, Bedetti C, Degroot C, et al. Mild cognitive impairment is linked with faster rate of cortical thinning in patients with Parkinson's disease longitudinally. *Brain*. 2014;137(4):1120-1129. doi:10.1093/brain/awu036
14. Uribe C, Segura B, Baggio HC, et al. Progression of Parkinson's disease patients' subtypes based on cortical thinning: 4-year follow-up. *Parkinsonism Relat Disord*. 2019;64:286-292. doi:10.1016/j.parkreldis.2019.05.012
15. Garcia-Diaz AI, Segura B, Baggio HC, et al. Cortical thinning correlates of changes in visuospatial and visuoperceptual performance in Parkinson's disease: A 4-year follow-up. *Parkinsonism Relat Disord*. 2018;46:62-68. doi:10.1016/j.parkreldis.2017.11.003
16. Witt K, Granert O, Daniels C, et al. Relation of lead trajectory and electrode position to neuropsychological outcomes of subthalamic neurostimulation in Parkinson's disease: results from a randomized trial. *Brain*. 2013;136(7):2109-2119. doi:10.1093/brain/awt151
17. Reich MM, Hsu J, Ferguson M, et al. A brain network for deep brain stimulation induced cognitive decline in Parkinson's disease. *Brain*. Published online January 17, 2022. doi:10.1093/brain/awac012
18. Choe C, Niemann L, Englisch C, et al. Subclinical Cardiac Microdamage, Motor Severity, and Cognition in Parkinson's Disease. *Movement Disorders*. 2020;35(10):1863-1868. doi:10.1002/mds.28129
19. Carter AR, Patel KR, Astafiev S V, et al. Upstream Dysfunction of Somatomotor Functional Connectivity After Corticospinal Damage in Stroke. *Neurorehabil Neural Repair*. 2012;26(1):7-19. doi:10.1177/1545968311411054
20. Destrieux C, Fischl B, Dale A, Halgren E. Automatic parcellation of human cortical gyri and sulci using standard anatomical nomenclature. *Neuroimage*. 2010;53(1):1-15. doi:10.1016/j.neuroimage.2010.06.010
21. Rojas Albert A, Backhaus W, Graterol Pérez JA, et al. Cortical thickness of contralateral cortices positively relates to future outcome after severe stroke. *Cerebral Cortex*. Published online February 16, 2022. doi:10.1093/cercor/bhac040
22. Satz P. Brain reserve capacity on symptom onset after brain injury: A formulation and review of evidence for threshold theory. *Neuropsychology*. 1993;7(3):273-295. doi:10.1037/0894-4105.7.3.273
23. Chung SJ, Kim H, Jung JH, Lee PH, Jeong Y, Sohn YH. Identifying the Functional Brain Network of Motor Reserve in Early Parkinson's Disease. *Movement Disorders*. 2020;35(4):577-586. doi:10.1002/mds.28012