

Prevalence of untreated prediabetes and glucose metabolism disturbances in Mexico: An analysis of nationally representative surveys spanning 2016-2021

Carlos A. Fermín-Martínez^{1,2*}, César Daniel Paz-Cabrera^{1,3*}, Martín Roberto Basile-Alvarez^{1,4}, Paulina Sánchez Castro^{1,4}, Alejandra Núñez-Luna^{1,4}, Jerónimo Perezalonso-Espinosa³, Daniel Ramírez-García^{1,4}, Neftali Eduardo Antonio-Villa⁵, Arsenio Vargas-Vázquez³, Luisa Fernández-Chirino¹, Karime Berenice Carrillo-Herrera⁴, Leslie Alitzel Cabrera-Quintana⁴, Rosalba Rojas-Martínez⁶, Jacqueline A. Seiglie^{7,8}, Omar Yaxmehen Bello-Chavolla¹

****These authors contributed equally to the drafting of this work***

¹Research Division, Instituto Nacional de Geriátría, Mexico City, Mexico. ²MD/PhD (PECEM) Program, Facultad de Medicina, Universidad Nacional Autónoma de México, Mexico City, Mexico. ³Especialidad en Medicina Preventiva, Instituto Nacional de Salud Pública, Mexico City, Mexico. ⁴Facultad de Medicina, Universidad Nacional Autónoma de México, Mexico City, Mexico. ⁵Department of Endocrinology, Instituto Nacional de Cardiología Ignacio Chávez, Mexico City, Mexico. ⁶Instituto Nacional de Salud Pública, Mexico City, Mexico. ⁷Diabetes Unit, Massachusetts General Hospital, Harvard Medical School, Massachusetts, USA. ⁸Department of Medicine, Harvard Medical School, Massachusetts, USA.

Correspondence:

Omar Yaxmehen Bello-Chavolla. Division of Research. Instituto Nacional de Geriátría. Anillo Perif. 2767, San Jerónimo Lídice, La Magdalena Contreras, 10200, Mexico City, Mexico. Phone: +52 (55) 5548486885. E-mail: oyaxbell@yahoo.com.mx

CONFLICT OF INTERESTS: The authors declare that they have no conflict of interests.

3,492 text words; 44 references; 3 figures, 2 tables.

Running headline: Prediabetes and alterations in glucose metabolism in Mexico

ABSTRACT (247 WORDS)

OBJECTIVE: Characterizing prediabetes phenotypes may be useful in guiding diabetes prevention efforts; however, heterogeneous criteria to define prediabetes have led to inconsistent prevalence estimates, particularly in low- and middle-income countries. We estimated trends in untreated prediabetes prevalence in Mexico across different definitions and its association with prevalent cardiometabolic conditions.

METHODS: We conducted a serial cross-sectional analysis of National Health and Nutrition Surveys in Mexico (2016-2021), totaling 21,442 Mexican adults, excluding individuals with diagnosed or undiagnosed diabetes. Prediabetes was defined using ADA (impaired fasting glucose [IFG] 100-125 mg/dL and/or HbA1c 5.7-6.4%), WHO (IFG 110-125 mg/dL), and IEC criteria (HbA1c 6.0-6.4%). Prevalence trends of prediabetes over time were evaluated using Poisson regression and its association with prevalent cardiometabolic conditions with logistic regression.

RESULTS: Prevalence of prediabetes in Mexico in 2021 was 27.3%. Despite an overall downward trend in prediabetes (RR 0.960, 95%CI 0.940-0.979), this decrease was primarily driven by decreases in prediabetes by ADA-IFG (RR 0.883, 95%CI 0.861-0.907) and WHO-IFG criteria (RR 0.878, 95%CI 0.838-0.921), while prediabetes by ADA-HbA1c (RR 1.049, 95%CI 1.022-1.077) and IEC-HbA1C criteria (RR 1.064, 95%CI 1.014-1.115) increased over time. Prediabetes prevalence increased over time in adults >40 years, individuals with central obesity, self-identified as indigenous or living in urban areas.

Regardless of the definition, prediabetes was associated with increased risk of cardiometabolic conditions.

CONCLUSIONS: Prediabetes rates in Mexico from 2016-2021 varied based on defining criteria but consistently increased for HbA1c-based definitions and high-risk subgroups. Regardless of the definition, prediabetes clusters subjects with high cardiometabolic risk.

Keywords: prediabetes, glucose metabolism, insulin resistance, cardiometabolic risk

INTRODUCTION

Prediabetes is a stage of altered glucose metabolism associated with risk of progression to diabetes mellitus and an elevated burden of cardiovascular risk factors (1,2). While comprehensive data on the global burden of prediabetes are lacking, the International Diabetes Federation estimates a global prevalence of Impaired Glucose Tolerance (IGT) of 7.5% (374 million adults), of whom 72.2% reside in low- and middle-income countries (LMICs). Ethnicity is a known modifier of metabolic risk in individuals with prediabetes (3,4); in particular, Mexican mestizo populations have an increased risk of diabetes, which manifests at younger ages and lower body-mass index levels (5–7). However, epidemiological data on prediabetes among ethnically diverse populations are limited, including in Mexico, where diabetes mellitus is a leading cause of disability and death (8). Given that prediabetes is the earliest identifiable stage of glucose dysregulation and progression to diabetes mellitus can be prevented at this stage (2,9,10), a more nuanced understanding of prediabetes epidemiology in Mexico could help inform diabetes prevention efforts (2).

Despite being a potentially reversible risk factor for diabetes, an important challenge in the timely identification of prediabetes in clinical and public health contexts lies in the heterogeneity and controversy of its definition (2,11,12). Five definitions of prediabetes have been proposed by professional societies and are in current practice (13–15). The American Diabetes Association (ADA) defines prediabetes as either fasting plasma glucose (FPG, 100-125 mg/dL), glycated hemoglobin A1c (HbA1c, 5.7-6.4%), or two-hour post 75-g oral glucose load (140-199 mg/dL)(15). The World Health Organization (WHO) and the International Expert Committee (IEC) proposed definitions that include two-hour post 75-g oral glucose load or FPG (WHO) or HbA1c-only (IEC) with distinct cut-offs (13,14). These discrepancies have led to heterogeneous estimates of prediabetes

prevalence and conflicting data on the utility of its identification (2,12,16). In this study, we aimed to provide reliable estimates on prevalence trends of untreated prediabetes in Mexican adults from 2016 to 2021 using a series of nationally representative surveys, and to assess potential modifiers of prediabetes prevalence. Finally, we also quantified the extent to which prediabetes is associated with prevalent cardiometabolic comorbidities.

METHODS

Study design

We conducted a serial cross-sectional analysis using data from the Mexican National Health and Nutrition Survey (ENSANUT) for the years 2016, 2018, 2020, and 2021 (17–20). Briefly, ENSANUT is a population-based survey that aims to assess the health and nutritional status of Mexican adults. ENSANUT is representative at a national, regional, and rural/urban level, as it uses two-stage probabilistic cluster stratified sampling based on households and individuals. Participants underwent a comprehensive questionnaire collecting demographic, socioeconomic, and health-related data, and a physical exam including measurement of blood pressure and anthropometry. A random subsample of each cycle had an additional biochemical evaluation with serum samples for fasting glucose, insulin, lipid profile, and glycated hemoglobin (HbA1c); these biomarkers were used to estimate prevalence of glucose metabolism disturbances. For this study, ENSANUT 2006 and 2012 were not included because of insufficient biomarkers to perform adequate classification of alterations in glucose metabolism. Details on study design and a complete flowchart for the selection of participants are outlined in **Supplementary Materials**.

Variable definitions

Diagnosed and undiagnosed diabetes

Previously diagnosed diabetes was defined by self-report among individuals who answered “yes” to the question “Has a doctor ever told you that you have diabetes (or high blood sugar)?” or report of using insulin or oral diabetes medications. Individuals who did not meet the criteria for prior diagnosis, but who had either fasting plasma glucose (FPG) ≥ 126 mg/dL or hemoglobin A1c (HbA1c) $\geq 6.5\%$ were categorized as having undiagnosed diabetes. The prevalence of diabetes according to these definitions was estimated using individual-level data from all ENSANUT cycles.

Prediabetes and insulin resistance

We defined prediabetes using two different biomarker-based definitions. Impaired fasting glucose (IFG) was defined using fasting plasma glucose levels between 100-125 mg/dL and high HbA1c was defined using HbA1c levels between 5.7-6.4%, as proposed by the ADA (21). To further evaluate concordance and discordance of these criteria, we defined variables for individuals with IFG but HbA1c within the normal range (IFG-Normal A1c), individuals with elevated HbA1c but normal fasting glucose (NFG-High A1c), and individuals who fulfilled both criteria (IFG- High A1c). Furthermore, we defined insulin resistance (IR) as HOMA2-IR values ≥ 2.5 , as previously defined for the Mexican population (22,23). Finally, we sought to study the impact of higher diagnostic thresholds by using the prediabetes definitions proposed by the WHO (FPG 110-125 mg/dL) and IEC (HbA1c 6.0-6.4%) (13,14). For all these definitions, we excluded individuals with previously diagnosed or undiagnosed diabetes mellitus. Prediabetes definitions used for this study are summarized in **Table 1**.

Covariates

We used body mass index (BMI) to categorize patients with normal weight (18.5-24.9 kg/m²), overweight (≥ 25 kg/m²) or obesity (≥ 30 kg/m²). We also used waist circumference ≥ 90 cm for men or ≥ 80 cm for women to define central obesity based on IDF criteria (24).

To assess state-level social disadvantage we used the 2020 density-independent social lag index (DISLI) by obtaining the residuals from a linear regression of population density onto social lag index, which is a composite measure of access to education, health care, dwelling quality, and basic services in Mexico (25–27).

Cardiometabolic conditions

Hypertension was defined by either a self-reported prior diagnosis, use of blood pressure-lowering medications, a systolic blood pressure ≥ 140 mmHg, or a diastolic blood pressure ≥ 90 mmHg (using the mean of at least two different measurements). Hypercholesterolemia and hypertriglyceridemia were defined by fasting total cholesterol ≥ 200 mg/dL or fasting triglycerides ≥ 150 mg/dL, respectively. Metabolic syndrome was defined using IDF criteria: obesity (by either BMI or waist circumference) plus two of the following: triglycerides ≥ 150 mg/dL (or specific treatment for this abnormality), HDL-cholesterol < 40 mg/dL for men or < 50 mg/dL for women (or specific treatment), arterial blood pressure $\geq 130/85$ mmHg (or specific treatment), FPG ≥ 100 mg/dL or prior diagnosis of type 2 diabetes (24). Cardiovascular disease was defined as a self-reported prior diagnosis of either myocardial infarction, heart failure or stroke.

Statistical analyses

Weighted prevalence of prediabetes and its modifying factors

Prevalence of prediabetes and insulin resistance were estimated using sample weights from ENSANUT for participants with available HbA1c measures; all estimations were conducted using the *survey* R package (28). We further performed weighted subgroup analyses for prevalence trends stratified by age category (20-39, 40-59 or ≥ 60 years old), sex, BMI category, central obesity, smoking status (never-smoker, former-smoker, or current-smoker), indigenous identity, rural or urban area, and DISLI category (high or low/middle). To determine whether these modifying factors had an influence on

prediabetes trends over time, we implemented mixed-effects Poisson models where the interaction term between ENSANUT year and each factor was included as a fixed effect and the state of origin as a random intercept to address state-level conglomeration. We used population estimates by state from the National Population Council (CONAPO) (29), which we included as an offset to model annual rates of prediabetes and to obtain prevalence rate ratios.

Prediabetes as a predictor of cardiometabolic conditions

To assess whether participants with prediabetes (using the ADA, WHO and IEC definitions) showed an increased risk of cardiometabolic conditions compared to euglycemic individuals, we fitted logistic regression models for all ENSANUT years adjusting for age, sex, and BMI. The outcomes for these models were arterial hypertension, hypercholesterolemia, hypertriglyceridemia, insulin resistance, metabolic syndrome, and cardiovascular disease. We did not exclude participants with diabetes to compare the risk conferred by this condition with that of prediabetes. The only exceptions were the models for insulin resistance and metabolic syndrome, as the presence of diabetes substantially influences these definitions. All statistical analyses were conducted using R version 4.1.2 and p-values thresholds are estimated for a two-sided significance level of $\alpha = 0.05$.

RESULTS

Study population

We included adults aged ≥ 20 years old who completed the health questionnaire, totaling 66,641 participants (2016: 8,301, 2018: 42,565, 2020: 2,373, 2021: 13,402). Among them, 21,442 were selected for venous blood sampling (2016: 3,913, 2018: 13,004, 2020: 2,373, 2021: 2,152). A flowchart diagram of participant selection is available in **Supplementary Figure 1**. We observed a consistent predominance of women (57.5 %) and an overall

median age of 44 years (32–57 years). The proportion of participants with indigenous identity ranged from 4.7 % (in 2021) to 11.6 % (in 2016) and those living in urban areas ranged from 50.1 % to 76.4 %. We also observed a slight, but significant, increment in BMI and waist circumference throughout the years. A complete outline of population characteristics is shown in **Supplementary Table 1**, and percentages of missing values for each variable are depicted within **Supplementary Figure 2**.

Trends in the prevalence of glucose metabolism disturbances in Mexico

Prevalence of prediabetes by any definition was higher than that of diabetes in Mexico between 2016 and 2021. However, the pattern we observed was irregular, with a steep decrease from 2016 to 2018 (26.3% vs. 19.0%), followed by a marked increase from 2020 to 2021 (19.2% vs. 27.3%, **Figure 1A**). Poisson models showed an overall decline in prediabetes prevalence per year (RR 0.960, 95%CI 0.940-0.979); however, we observed an increase using ADA-HbA1c criteria (RR 1.049, 95%CI 1.022-1.077) and a decrease with ADA-IFG criteria (RR 0.883, 95%CI 0.861-0.907). A similar overall trend was observed for the stricter WHO-IFG (RR 0.878, 95%CI 0.838-0.921) and IEC-HbA1c criteria (RR 1.064, 95%CI 1.014-1.115), indicating that the overall decreasing trend for prediabetes using any criteria was driven by decreases in IFG which offset increases in high HbA1c. To further characterize this phenomenon, we classified individuals with prediabetes into those who presented with both high HbA1c and IFG and those who displayed only one of these alterations (**Figure 1B**). Among participants with discordance in these criteria, we observed an increase in the proportion of high HbA1c and a decline in IFG over the years, with a consistent increase in individuals with concordant IFG-high HbA1c, likely indicating increases in sustained alterations in glucose metabolism (**Figure 1B**). Furthermore, individuals with prediabetes with alterations in both parameters had the

highest proportions of insulin resistance (IR), comparable to the IR levels of subjects with diabetes (**Figure 1C**).

Determinants of prediabetes prevalence in Mexico

Several factors significantly increased the risk of prediabetes such as older age, BMI ≥ 25 and ≥ 30 kg/m², and central obesity. Current smokers had a lower risk than never smokers, but this could be attributed to reverse causality. Moreover, although the overall tendency was a decrease, some groups displayed an increment in prediabetes prevalence over the years, namely participants ≥ 40 years, those with central obesity, and those living in urban areas (**Figure 2, Table 2**). When assessing only high HbA1c as the diagnostic criteria for prediabetes, we found that indigenous identity and being a former smoker (compared to never smokers) were additional risk factors (**Supplementary figure 3, Supplementary tables 2-3**). Lastly, to address potential explanations for the observed differences in prediabetes prevalence related to racial and ethnic background, we contrasted rates of insulin resistance and various demographic and health-related parameters between participants with and without indigenous identity. Briefly, we observed lower rates of insulin resistance among indigenous subjects; however, results had greater heterogeneity in this population. Notably, indigenous participants displayed higher age, DISLI, HbA1c and triglycerides, Indigenous participants also displayed overall lower HOMA2-IR and HOMA2- β indicating, on average, lower β -cell function (**Supplementary figure 4**).

Prediabetes as a predictor of cardiometabolic conditions

We estimated the prevalent cardiometabolic risk (age, sex and BMI-adjusted) associated with prediabetes using a myriad of definitions, which displayed substantial variability in prevalence (**Figure 3A-B, Supplementary table 4**). First, we observed that IFG—but not high HbA1c—was associated with prevalent arterial hypertension. Moreover, almost all prediabetes definitions displayed roughly comparable estimates for prevalent

hypercholesterolemia and hypertriglyceridemia, except for the definition suggested by the IEC, which was poorly associated with these conditions. For insulin resistance, the stronger association was observed with the IFG-WHO definition and the weaker association with the high HbA1c-IEC definition. Prediabetes was also associated with metabolic syndrome, and individuals with alterations in both ADA criteria had a higher likelihood of having this condition. Lastly, we found no association with history of cardiovascular disease for any of the definitions of prediabetes (**Figure 3C**). All odds ratios with 95% confidence intervals are specified in **Supplementary Table 5**.

DISCUSSION

In this serial cross-sectional study of nationally representative surveys spanning 2016-2021, totaling 21,442 Mexican adults, we found that prediabetes by any definition currently affects 27.3% of the adult population. While the prevalence of prediabetes has decreased over time overall, largely driven by a decrease in IFG using both ADA and WHO criteria, we observed a consistent increase in prevalence using HbA1c, irrespective of the specific criteria. We also observed a consistent increase in prediabetes prevalence among adults over 40 years, individuals self-identified as indigenous, and individuals with central obesity or living in urban areas. Finally, clustering of cardio-metabolic conditions varied widely using different prediabetes definitions, which highlights the need for a consensus to better characterize prediabetes-associated cardiometabolic burden.

Prevalence of prediabetes

Providing a precise estimate of prediabetes prevalence has been challenging, as estimates widely vary according to definition and study settings. In 2019, the IDF estimated that 7.5% of adults worldwide had IGT, with the highest prevalence (13.8%) observed in North America and the Caribbean (30). Furthermore, using data from the National Health and Nutrition Examination Survey (NHANES) from 2015-2016 (2),

prevalence of prediabetes in the U.S. was estimated to be as high as 43% with the ADA-IFG definition (compared to a range of 9.8-18.3% in our study), 15.4% with WHO-IFG (2.7-4.3% in our study), 12.3% with ADA-HbA1c (10.1-18.7% in our study), and 4.3% with IEC-HbA1c (2.9-6.1% in our study). A report from the Center of Disease Control and Prevention (CDC) using data from NHANES 2017-2020 (31) showed that prevalence using either high HbA1c or IFG (ADA-Any) was 38% (19.0-27.3% in our study) and 10.8% using both (4.2-5.7% in our study). These discrepancies could be attributed to differences in study design, sampling, and analysis (e.g., some studies used participants aged ≥ 18 years and provided an age-adjusted prevalence) or due to ethnic differences, which needs further exploration. Although we did not find a consistent increase in the overall prevalence of prediabetes, we observed an increase using the ADA-HbA1c and IEC-HbA1c definitions and an increase in the prevalence of concordant IFG and high HbA1c over time. Indeed, reports from different regions of the world suggest that the prevalence of prediabetes has increased over the last few decades regardless of the definition; a trend projected to continue(2,30).

Factors associated to increased prediabetes prevalence

We also found that participants of older age, with obesity, and living in urban areas are more likely to have prediabetes than other populations. This finding is consistent with previous studies that report a strong association of age and obesity with prediabetes (2). Moreover, a similar report from ENSANUT using diabetes as the primary outcome also found urban area and limited access to education to significantly increase its prevalence (32), outlining the importance of sociodemographic and structural factors in the development of glucose metabolism disturbances. Interestingly, we found that Indigenous participants have lower rates of obesity and insulin resistance, which aligns with an earlier study reporting a reduced prevalence of prediabetes and diabetes (defined only with FPG

and OGTT) in the Indigenous Mexican population (33). Nonetheless, in our study, Indigenous participants had an elevated prevalence of high HbA1c and were older, had higher triglycerides, and lower HDL-cholesterol. Indigenous participants also showed lower values of HOMA2-IR and HOMA2- β , which could indicate a certain degree of insulin deficiency rather than insulin resistance in this population. Thus, results are not only explained by socioeconomic factors, but probably also by inherent differences in the pathophysiology of glucose metabolism disturbances in Indigenous population, possibly driven by genetic ancestry. These results also give rise to the idea that certain populations (allegedly due to ethnic and racial differences) are at higher risk of specific diabetes phenotypes (34–36), which should be further explored in future studies.

Cardiometabolic risk conferred by prediabetes

We also evaluated the risk conferred by various definitions and observed that WHO-IFG and the combination of both ADA criteria were associated with the highest risk. Notably, IEC-HbA1c displayed the weaker associations, and no definition was associated with cardiovascular disease. Previously, Tabák, et al. delineated a timeline of the events that tie initial glycemc dysregulation to the onset of diabetes, in which there is a prolonged period of impaired insulin sensitivity and secretion even before the biochemical criteria for prediabetes is met (37). Thus, subjects diagnosed with prediabetes are likely to already present with insulin resistance and β -cell dysfunction, which is why some authors have suggested changes in the diagnostic approach of high-risk subjects to detect earlier disturbances in glucose homeostasis (e.g., replace 2-hour glucose with 1-hour glucose in OGTT) (38). During this prediabetic period, insulin resistance interacts with other risk factors, such as visceral obesity, to precipitate an unfavorable metabolic state characterized by a decline in β -cell mass and function, increased lipolysis, changes in adipokine profiles, systemic inflammation, and endothelial dysfunction, among others

(37,39,40). The intersection of these variables is reflected by the association of prediabetes with dyslipidemia, hypertension, and metabolic syndrome in our results. Eventually, a subset of these individuals may progress to overt diabetes—which further accelerates these mechanisms—and may ultimately develop micro and macrovascular complications (37). Conversely, a significant number of individuals with prediabetes may never develop diabetes at all, or even revert to normoglycemia (37), which is often influenced by lifestyle or pharmacological interventions (2). Of note, a recent study by Rooney, et al., found that older adults with prediabetes display low rates of progression to diabetes and high rates of regression to normoglycemia (41), which may generate debate on the utility of the diagnosis of prediabetes in older subjects for risk stratification. Nonetheless, several meta-analyses using data from prospective studies have shown that all prediabetes definitions increase the risk of incident diabetes (42,43), cardiovascular disease, and mortality (44), with WHO-IFG and HbA1c-based definitions showcasing the highest risk in most cases.

In this study, we found no association between prediabetes and cardiovascular disease, however, the cross-sectional design of our study may fail to capture the long-term effects of these abnormalities. Furthermore, this discordance in prevalence and conferred risk driven by different definitions can also be attributed to the inherent properties of each diagnostic test and threshold. For instance, high HbA1c has showed increased specificity for diagnosis of prediabetes and is likely to identify individuals who also meet the other two criteria (2). However, this lowers its utility for screening in the general population, which is why the WHO does not recommend using HbA1c for diagnosis of prediabetes (13). In this regard, IFG is highly sensitive, but there is skepticism in the use of lower cut-offs (i.e., 100-125 mg/dL), as this increases the risk of false positives and possibly captures individuals with lower cardiometabolic risk. Preferably, various diagnostic tests should be used to

tailor prevention and therapeutic strategies. For the diagnosis of diabetes mellitus, the ADA recommends using two different tests and not to rely on isolated elevations of a single measurement (21), and it has been questioned whether this recommendation should be extended to prediabetes; our results show that combining multiple criteria (ADA-both) does improve the association with metabolic disease, while reducing the proportion of detected individuals.

Strengths and limitations

This study is, to our knowledge, the first to estimate prevalence of different prediabetes definitions in the Mexican population using precise and nationally representative data spanning multiple years and considering state-level conglomerations. Given the large burden of diabetes and metabolic diseases in the Mexican population, our estimates are likely to provide useful information for policy makers regarding screening strategies for prediabetes and to identify populations with higher prediabetes prevalence. However, we also acknowledge some limitations which should be considered to adequately interpret our results. First, data on OGTT was not available in ENSANUT; therefore, the overall prevalence of prediabetes may be underestimated as a result. Second, while probabilistic surveys are essential to provide reliable estimates at a national-level, the cross-sectional setting of this study hinders the assessment of long-term risk of prediabetes and its different definitions and further studies are needed to evaluate the longitudinal changes in prediabetes status, as well as the risk of incident diabetes, cardiometabolic disease, and all-cause and cause-specific mortality in individuals with prediabetes using different diagnostic criteria.

Conclusion

In summary, we observed a high prevalence of prediabetes in the Mexican population which varied widely according to the diagnostic test and cut-off being used. Overall,

prevalence of IFG decreased over time, with increases observed in prediabetes as defined by HbA1c criteria. Nevertheless, our results emphasize the importance of early detection and prevention of alterations in glucose metabolism (particularly in populations at high risk), as prediabetes is associated with increased risk of poor cardiometabolic outcomes regardless of the definition. This also highlights the urge to conduct more research and harmonize the definition of prediabetes, considering that the prevalence of this condition will likely increase in the coming years in LMICs.

ACKNOWLEDGMENTS

CAFM and JPE are enrolled at the PECEM Program of the Faculty of Medicine at UNAM. CAFM and DRG are supported by CONACyT.

AUTHOR CONTRIBUTIONS

Research idea and study design: CDPC, CAFM, OYBC; data acquisition and processing: RR, CDPC, CAFM, NEAV, AVV, LFC, DRG; statistical analysis: CDPC, CAFM, OYBC; analysis/interpretation: CDPC, CAFM, OYBC, NEAV, AVV, LFC, DRG; manuscript drafting: JPE, MRBA, PSC, ANL, KCH, LCQ, CDPC, CAFM, JAS, OYBC; supervision or mentorship: JAS, OYBC. Each author contributed important intellectual content during manuscript drafting or revision and accepts accountability for the overall work by ensuring that questions pertaining to the accuracy or integrity of any portion of the work are appropriately investigated and resolved.

DATA AVAILABILITY: All code, datasets and materials are available for reproducibility of results at http://github.com/oyaxbell/prediabetes_ensanut/

CONFLICT OF INTEREST/FINANCIAL DISCLOSURE: Nothing to disclose.

FUNDING: This research was supported by Instituto Nacional de Geriatria in Mexico.

REFERENCES

1. Rett K, Gottwald-Hostalek U. Understanding prediabetes: definition, prevalence, burden and treatment options for an emerging disease. *Current Medical Research and Opinion*. 2019 Sep 2;35(9):1529–34.
2. Echouffo-Tcheugui JB, Selvin E. Prediabetes and What It Means: The Epidemiological Evidence. *Annu Rev Public Health*. 2021 Apr 1;42:59–77.
3. Vatcheva KP, Fisher-Hoch SP, Reiningger BM, McCormick JB. Sex and age differences in prevalence and risk factors for prediabetes in Mexican-Americans. *Diabetes Res Clin Pract*. 2020 Jan;159:107950.
4. Shaheen M, Schrode KM, Tedlos M, Pan D, Najjar SM, Friedman TC. Racial/ethnic and gender disparity in the severity of NAFLD among people with diabetes or prediabetes. *Front Physiol*. 2023;14:1076730.
5. Almeda-Valdes P, Gómez Velasco DV, Arellano Campos O, Bello-Chavolla OY, Del Rocío Sevilla-González M, Viveros Ruiz T, et al. The SLC16A11 risk haplotype is associated with decreased insulin action, higher transaminases and large-size adipocytes. *Eur J Endocrinol*. 2019 Feb 1;180(2):99–107.
6. Williams AL, Jacobs SBR, Moreno-Macías H, Huerta-Chagoya A, Churchhouse C, Márquez-Luna C, et al. Sequence variants in SLC16A11 are a common risk factor for type 2 diabetes in Mexico. *Nature*. 2014 Feb;506(7486):97–101.
7. Bello-Chavolla OY, Rojas-Martinez R, Aguilar-Salinas CA, Hernández-Avila M. Epidemiology of diabetes mellitus in Mexico. *Nutr Rev*. 2017 Jan;75(suppl 1):4–12.
8. Bello-Chavolla OY, Antonio-Villa NE, Fermín-Martínez CA, Fernández-Chirino L, Vargas-Vázquez A, Ramírez-García D, et al. Diabetes-Related Excess Mortality in Mexico: A Comparative Analysis of National Death Registries Between 2017–2019 and 2020.

Diabetes Care. 2022 Oct 26;45(12):2957–66.

9. Knowler WC, Barrett-Connor E, Fowler SE, Hamman RF, Lachin JM, Walker EA, et al. Reduction in the incidence of type 2 diabetes with lifestyle intervention or metformin. *N Engl J Med*. 2002 Feb 7;346(6):393–403.

10. Diabetes Prevention Program Research Group. Long-term effects of lifestyle intervention or metformin on diabetes development and microvascular complications over 15-year follow-up: the Diabetes Prevention Program Outcomes Study. *Lancet Diabetes Endocrinol*. 2015 Nov;3(11):866–75.

11. Echouffo-Tcheugui JB, Perreault L, Ji L, Dagogo-Jack S. Diagnosis and Management of Prediabetes: A Review. *JAMA*. 2023 Apr 11;329(14):1206–16.

12. Blond MB, Færch K, Herder C, Ziegler D, Stehouwer CDA. The prediabetes conundrum: striking the balance between risk and resources. *Diabetologia* [Internet]. 2023 Mar 10 [cited 2023 Apr 27]; Available from: <https://doi.org/10.1007/s00125-023-05890-y>

13. World Health Organization, Federation ID. Definition and diagnosis of diabetes mellitus and intermediate hyperglycaemia: report of a WHO/IDF consultation [Internet]. World Health Organization; 2006 [cited 2023 Apr 21]. Available from: <https://apps.who.int/iris/handle/10665/43588>

14. International Expert Committee. International Expert Committee report on the role of the A1C assay in the diagnosis of diabetes. *Diabetes Care*. 2009 Jul;32(7):1327–34.

15. ElSayed NA, Aleppo G, Aroda VR, Bannuru RR, Brown FM, Bruemmer D, et al. 2. Classification and Diagnosis of Diabetes: Standards of Care in Diabetes—2023. *Diabetes Care*. 2022 Dec 12;46(Supplement_1):S19–40.

16. Ford ES, Zhao G, Li C. Pre-diabetes and the risk for cardiovascular disease: a systematic review of the evidence. *J Am Coll Cardiol*. 2010 Mar 30;55(13):1310–7.

17. Romero-Martínez M, Shamah-Levy T, Cuevas-Nasu L, Méndez Gómez-Humarán I,

- Gaona-Pineda EB, Gómez-Acosta LM, et al. Diseño metodológico de la Encuesta Nacional de Salud y Nutrición de Medio Camino 2016. *Salud Publica Mex.* 2017 May 31;59(3, may-jun):299.
18. Romero-Martínez M, Shamah-Levy T, Vielma-Orozco E, Heredia-Hernández O, Mojica-Cuevas J, Cuevas-Nasu L, et al. Encuesta Nacional de Salud y Nutrición 2018-19: metodología y perspectivas. *Salud Publica Mex.* 2019 Dec 5;61(6, nov-dic):917–23.
19. Romero-Martínez M, Barrientos-Gutiérrez T, Cuevas-Nasu L, Bautista-Arredondo S, Colchero A, Gaona-Pineda EB, et al. Metodología de la Encuesta Nacional de Salud y Nutrición 2020 sobre Covid-19. *Salud Pública de México.* 2021 May 3;63(3 May-Jun):444–51.
20. Martínez MR, Barrientos-Gutiérrez T, Cuevas-Nasu L, Bautista-Arredondo S, Colchero MA, Gaona-Pineda EB, et al. Metodología de la Encuesta Nacional de Salud y Nutrición 2021. *Salud Pública de México.* 2021 Nov 5;63(6, Nov-Dic):813–8.
21. ElSayed NA, Aleppo G, Aroda VR, Bannuru RR, Brown FM, Bruemmer D, et al. 2. Classification and Diagnosis of Diabetes: Standards of Care in Diabetes-2023. *Diabetes Care.* 2023 Jan 1;46(Suppl 1):S19–40.
22. HOMA2 Calculator: Overview [Internet]. [cited 2023 Apr 21]. Available from: <https://www.dtu.ox.ac.uk/homacalculator/>
23. Arellano-Campos O, Gómez-Velasco DV, Bello-Chavolla OY, Cruz-Bautista I, Melgarejo-Hernandez MA, Muñoz-Hernandez L, et al. Development and validation of a predictive model for incident type 2 diabetes in middle-aged Mexican adults: the metabolic syndrome cohort. *BMC Endocr Disord.* 2019 Apr 28;19(1):41.
24. -. The IDF consensus worldwide definition of the metabolic syndrome. *Obes metabol.* 2005 Sep 15;2(3):47–9.
25. Índice Rezago Social 2020 [Internet]. [cited 2023 Apr 20]. Available from:

https://www.coneval.org.mx/Medicion/IRS/Paginas/Indice_Rezago_Social_2020.aspx

26. Antonio-Villa NE, Fernandez-Chirino L, Pisanty-Alatorre J, Mancilla-Galindo J, Kammar-García A, Vargas-Vázquez A, et al. Comprehensive Evaluation of the Impact of Sociodemographic Inequalities on Adverse Outcomes and Excess Mortality During the Coronavirus Disease 2019 (COVID-19) Pandemic in Mexico City. *Clin Infect Dis*. 2022 Mar 9;74(5):785–92.
27. Antonio-Villa NE, Bello-Chavolla OY, Fermín-Martínez CA, Aburto JM, Fernández-Chirino L, Ramírez-García D, et al. Socio-demographic inequalities and excess non-COVID-19 mortality during the COVID-19 pandemic: a data-driven analysis of 1 069 174 death certificates in Mexico. *Int J Epidemiol*. 2022 Dec 13;51(6):1711–21.
28. survey.pdf [Internet]. [cited 2023 Apr 21]. Available from: <https://cran.r-project.org/web/packages/survey/survey.pdf>
29. Proyecciones de la Población de México y de las Entidades Federativas, 2016-2050 - datos.gob.mx/busca [Internet]. [cited 2023 Apr 21]. Available from: <https://datos.gob.mx/busca/dataset/proyecciones-de-la-poblacion-de-mexico-y-de-las-entidades-federativas-2016-2050>
30. Saeedi P, Petersohn I, Salpea P, Malanda B, Karuranga S, Unwin N, et al. Global and regional diabetes prevalence estimates for 2019 and projections for 2030 and 2045: Results from the International Diabetes Federation Diabetes Atlas, 9th edition. *Diabetes Res Clin Pract*. 2019 Nov;157:107843.
31. Prevalence of Prediabetes Among Adults | Diabetes | CDC [Internet]. 2022 [cited 2023 Apr 21]. Available from: <https://www.cdc.gov/diabetes/data/statistics-report/prevalence-of-prediabetes.html>
32. Basto-Abreu AC, López-Olmedo N, Rojas-Martínez R, Aguilar-Salinas CA, De La Cruz-Góngora VV, Rivera-Dommarco J, et al. Prevalence of diabetes and glycemic control

in Mexico: national results from 2018 and 2020. *Salud Publica Mex.* 2021 Nov 5;63(6, Nov-Dic):725–33.

33. Jimenez-Corona A, Nelson RG, Jimenez-Corona ME, Franks PW, Aguilar-Salinas CA, Graue-Hernandez EO, et al. Disparities in prediabetes and type 2 diabetes prevalence between indigenous and nonindigenous populations from Southeastern Mexico: The Comitán Study. *Journal of Clinical & Translational Endocrinology.* 2019 Jun;16:100191.
34. Ahlqvist E, Storm P, Käräjämäki A, Martinell M, Dorkhan M, Carlsson A, et al. Novel subgroups of adult-onset diabetes and their association with outcomes: a data-driven cluster analysis of six variables. *Lancet Diabetes Endocrinol.* 2018 May;6(5):361–9.
35. Bello-Chavolla OY, Bahena-López JP, Vargas-Vázquez A, Antonio-Villa NE, Márquez-Salinas A, Fermín-Martínez CA, et al. Clinical characterization of data-driven diabetes subgroups in Mexicans using a reproducible machine learning approach. *BMJ Open Diabetes Res Care.* 2020 Jul;8(1):e001550.
36. Yacamán Méndez D, Zhou M, Trolle Lagerros Y, Gómez Velasco DV, Tynelius P, Gudjonsdottir H, et al. Characterization of data-driven clusters in diabetes-free adults and their utility for risk stratification of type 2 diabetes. *BMC Med.* 2022 Oct 18;20(1):356.
37. Tabák AG, Herder C, Rathmann W, Brunner EJ, Kivimäki M. Prediabetes: a high-risk state for diabetes development. *Lancet.* 2012 Jun 16;379(9833):2279–90.
38. Bergman M. The 1-Hour Plasma Glucose: Common Link Across the Glycemic Spectrum. *Front Endocrinol.* 2021 Sep 7;12:752329.
39. Brannick B, Wynn A, Dagogo-Jack S. Prediabetes as a toxic environment for the initiation of microvascular and macrovascular complications. *Exp Biol Med (Maywood).* 2016 Jun;241(12):1323–31.
40. Huang PL. A comprehensive definition for metabolic syndrome. *Disease Models & Mechanisms.* 2009 Apr 30;2(5–6):231–7.

41. Rooney MR, Rawlings AM, Pankow JS, Echouffo Tcheugui JB, Coresh J, Sharrett AR, et al. Risk of Progression to Diabetes Among Older Adults With Prediabetes. *JAMA Intern Med.* 2021 Apr 1;181(4):511.
42. Richter B, Hemmingsen B, Metzendorf MI, Takwoingi Y. Development of type 2 diabetes mellitus in people with intermediate hyperglycaemia. *Cochrane Database Syst Rev.* 2018 Oct 29;10(10):CD012661.
43. Morris DH, Khunti K, Achana F, Srinivasan B, Gray LJ, Davies MJ, et al. Progression rates from HbA1c 6.0-6.4% and other prediabetes definitions to type 2 diabetes: a meta-analysis. *Diabetologia.* 2013 Jul;56(7):1489–93.
44. Cai X, Zhang Y, Li M, Wu JH, Mai L, Li J, et al. Association between prediabetes and risk of all cause mortality and cardiovascular disease: updated meta-analysis. *BMJ.* 2020 Jul 15;370:m2297.

TABLES

TABLE 1. Prediabetes as defined by the ADA, WHO and IEC using various diagnostic tests. The default definition used throughout this study —unless stated otherwise— is having either IFG or high HbA1c as defined by the ADA. Abbreviations. ADA: American Diabetes Association. WHO: World Health Organization. IEC: International Expert Committee. IFG: Impaired fasting glucose. IGT: Impaired glucose tolerance. OGTT: Oral glucose tolerance test.

Criteria	Association	Definition
IFG (Using fasting plasma glucose)	ADA	100 – 125 mg/dL
	WHO	110 – 125 mg/dL
High HbA1c	ADA	5.7 – 6.4 %
	IEC	6.0 – 6.4 %
IGT (Using 2-hour glucose in OGTT)	ADA	140 – 199 mg/dL
	WHO	<i>Not available for this study</i>
<i>Any ADA criteria</i>	<i>Either IFG or high HbA1c Definition used in this study unless stated otherwise</i>	
Both ADA criteria	Both IFG and high HbA1c	

TABLE 2. Prevalence rate ratios (RR) with 95% confidence intervals from mixed-effects Poisson models to quantify the influence of several modifiers on prediabetes rates over time (either high HbA1c or IFG). Abbreviations. BMI: Body mass index. DISLI: Density-independent social lag index.

Model	Predictor	RR (95% CI)
Age (years)	20-39	Ref
	40-59	2.049 (1.810 - 2.320)
	≥60	2.210 (1.919 - 2.545)
	ENSANUT year	0.905 (0.869 - 0.943)
	Year*Age 40-59	1.065 (1.013 - 1.120)
	Year*Age ≥60	1.100 (1.041 - 1.163)
Sex	Men	Ref
	Women	1.024 (0.921 - 1.139)
	ENSANUT year	0.961 (0.929 - 0.994)
	Year*Women	0.998 (0.957 - 1.040)
BMI categories	Normal weight	Ref
	Overweight	1.567 (1.338 - 1.835)
	Obesity	2.176 (1.869 - 2.534)
	ENSANUT year	0.916 (0.867 - 0.968)
	Year*Overweight	1.029 (0.964 - 1.098)
Waist circumference	Normal	Ref
	Central obesity	1.791 (1.515 - 2.118)
	ENSANUT year	0.883 (0.818 - 0.953)
Smoking status	Year*Obesity	1.110 (1.025 - 1.202)
	Never smoker	Ref
	Former smoker	1.087 (0.968 - 1.222)
	Current smoker	0.818 (0.692 - 0.967)
	ENSANUT year	0.978 (0.950 - 1.006)
	Year*Former	0.978 (0.927 - 1.032)
Year*Current	1.031 (0.963 - 1.103)	

	No	Ref
Indigenous language	Yes	1.181 (0.999 - 1.396)
	ENSANUT year	0.967 (0.946 - 0.987)
	Year*Yes	0.901 (0.833 - 0.976)
	Low-Middle	Ref
DISLI	High	1.070 (0.958 - 1.194)
	ENSANUT year	0.969 (0.946 - 0.992)
	Year*High	0.983 (0.940 - 1.028)
	Rural	Ref
Area	Urban	0.956 (0.869 - 1.052)
	ENSANUT year	0.899 (0.870 - 0.928)
	Year*Urban	1.067 (1.036 - 1.098)

FIGURES

1

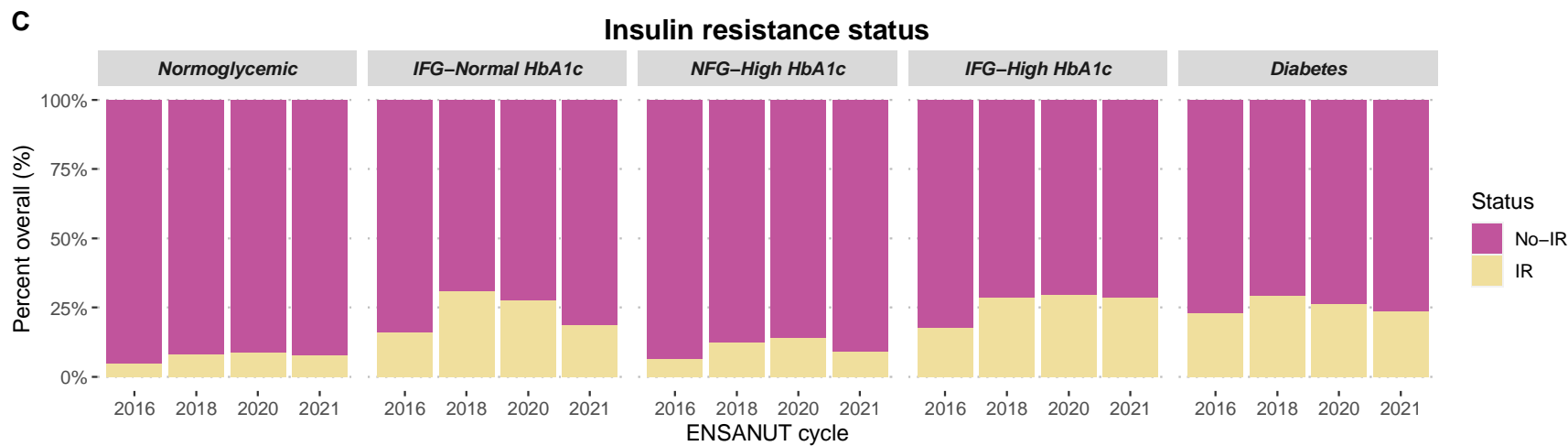
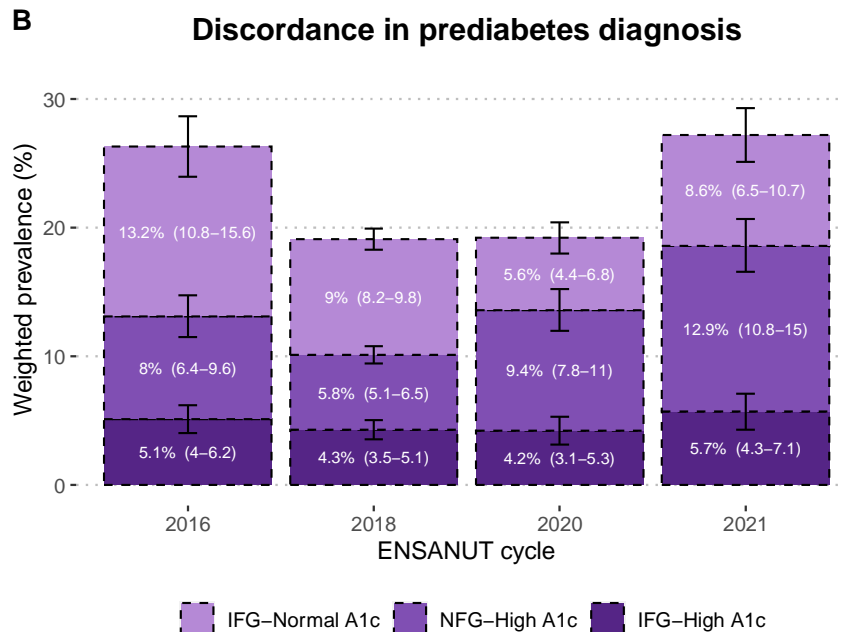
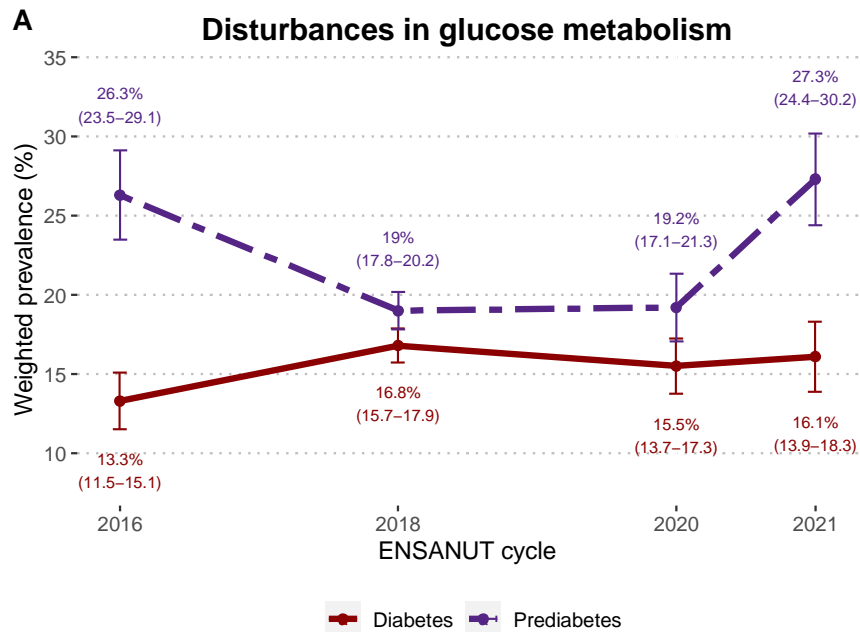
2 **FIGURE 1.** Change in prevalence of diabetes and prediabetes from 2016 to 2021 in Mexico (A). Participants with prediabetes (either
3 high HbA1c or IFG) are categorized according to the diagnostic criteria they fulfilled (IFG only, high HbA1c only, or both), revealing
4 that changes in prevalence were primarily driven by subjects with high HbA1c (B). The percentage of participants with insulin
5 resistance (HOMA-2IR ≥ 2.5) in each category is also shown (C). Abbreviations. IFG: Impaired fasting glucose. NFG: Normal fasting
6 glucose. IR: Insulin resistance.

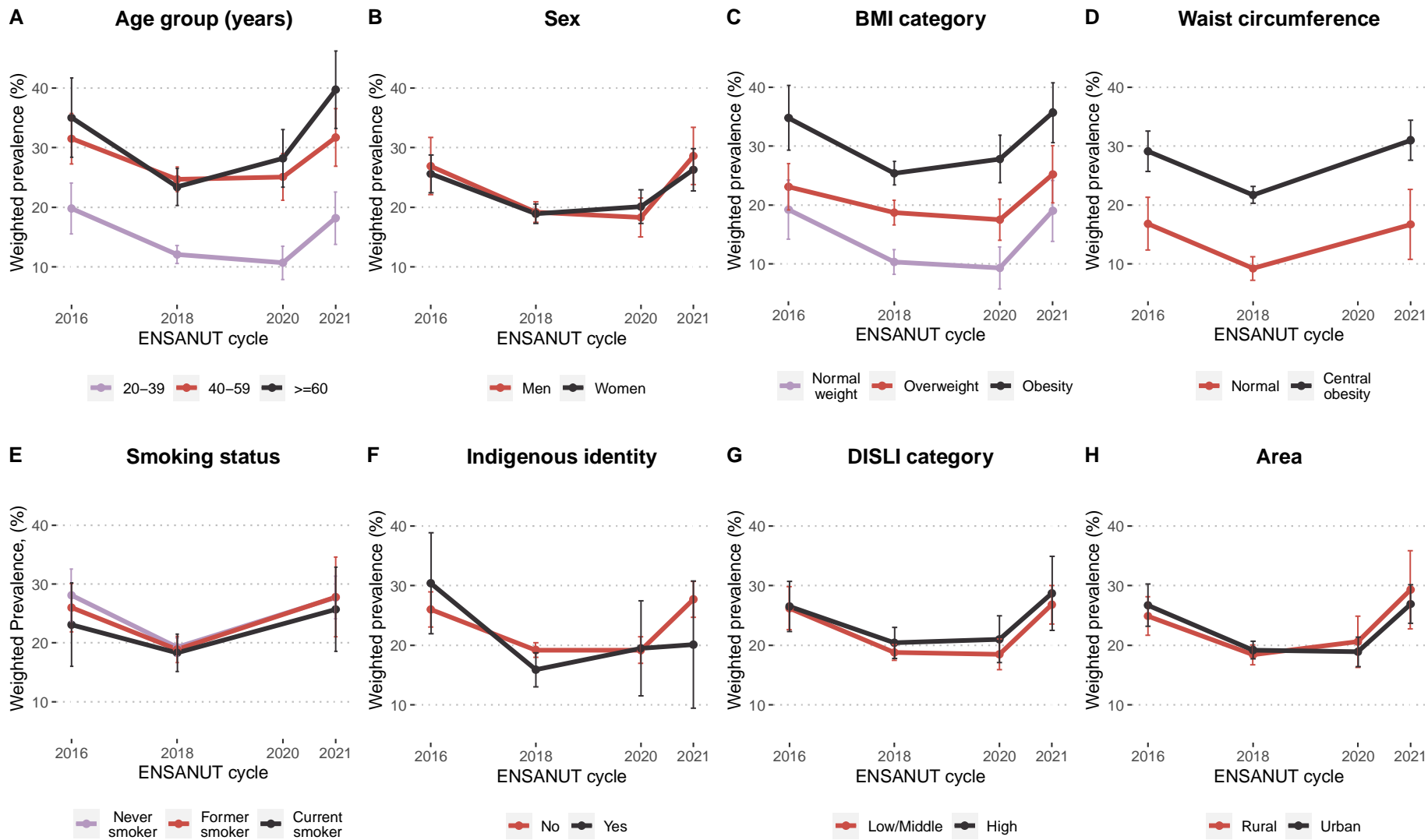
7

8 **FIGURE 2.** Change in prevalence of prediabetes (either high HbA1c or IFG) from 2016 to 2021 in Mexico stratified by age group (A),
9 sex (B), BMI category (C), waist circumference (D), smoking status (E), indigenous identity (F), DISLI category (G) and area (H).
10 Abbreviations. BMI: Body mass index. DISLI: Density-independent social lag index. IFG: Impaired fasting glucose.

11

12 **FIGURE 3.** Prevalence of prediabetes in Mexico from 2016 to 2021 according to different definitions used by the ADA (A) and by
13 other organizations (B). We also present an odds ratio plot displaying the association between each of these definitions with multiple
14 cardiovascular outcomes, adjusted for age, sex, and body mass index. Abbreviations. ADA: American Diabetes Association. IEC:
15 International Expert Committee. WHO: World Health Organization. IFG: Impaired fasting glucose.





17

18

