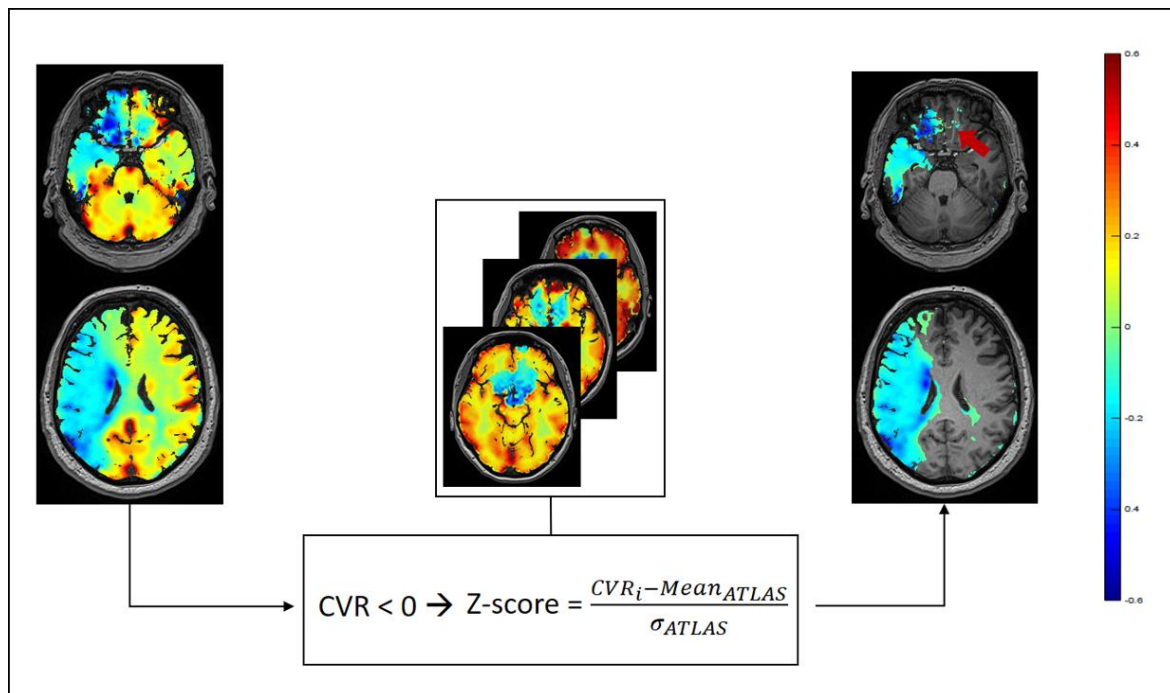


1 SUPPLEMENTAL MATERIAL

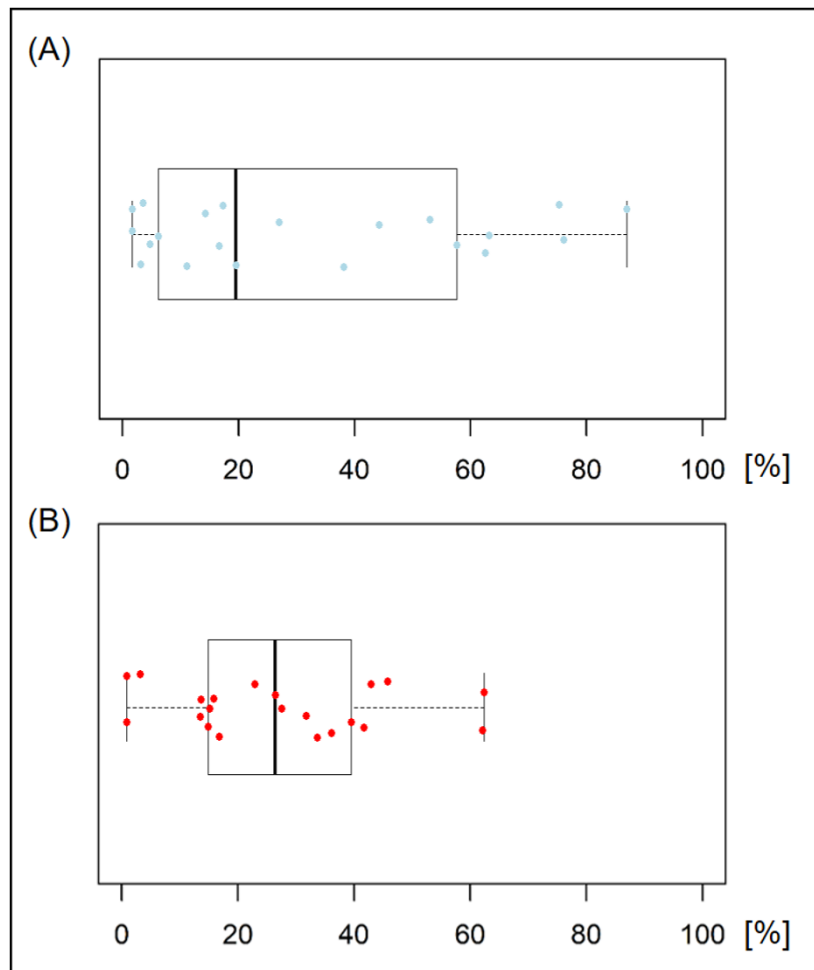


2

3 **Supplementary Figure 1. BOLD-CVR associated steal phenomenon mask generation.**

4 For each patient the relevant voxels showing negative response in the blood oxygen level  
5 dependent cerebrovascular reactivity (BOLD-CVR) map were selected. First, we considered  
6 all voxels with  $< 0\%$  BOLD signal change/mmHg  $CO_2$ . Then, using our healthy atlas as  
7 reference, a Z-score map of the CVR map was generated and the voxels with Z-score  $< 2$   
8 were excluded. In this way, only those negative voxels that differed significantly from the  
9 healthy cohort (e.g., voxels with artefact-related negative BOLD signal in the frontobasal  
10 brain region, red arrow) were considered.

11



12

13 **Supplementary Figure 2. Spatial correlation between BOLD-CVR associated steal**  
 14 **phenomenon and DWI infarct lesion.**

15 BOLD-CVR indicates blood oxygen level dependent cerebrovascular reactivity. **A**, a boxplot  
 16 of the percentage of DWI infarct lesion included in the BOLD-CVR associated steal  
 17 phenomenon; **B**, a boxplot of the percentage of BOLD-CVR associated steal phenomenon  
 18 included in the DWI infarct lesion.

19

\\NRA\Schädel\_32ch\Ischämie\CRPPstroke20191228\_32ch\_New\_Patients6-\CO2\_bold \*

TA: 6:46 min Coil Selection: Auto Voxel Size: 3.0×3.0×3.0 mm<sup>3</sup> Acc.: 2 Rel. SNR: 1.00**Properties**

Start measurement without further preparation	On
Wait for User to Start	Off
Start measurements	Single Measurement
Prio Recon	Off
Auto Open Inline Display	Off
Auto Close Inline Display	Off
Load Images to MR View&GO	On
Auto Store Images	On
Load Images to Stamp Segments	Off
Load Images to Graphic Segments	Off
Graphic segment	Default
Inline Movie	Off

**Routine**

Slice Group	1
Slices	35
Distance Factor	10 %
Position	R0.8 P5.9 H10.6 mm
Orientation	T > C-16.5 > S0.6
Phase Encoding Dir.	A >> P
Phase Oversampling	0 %
FoV Read	192 mm
FoV Phase	100.0 %
Slice Thickness	3.0 mm
TR	2000.0 ms
TE	30.00 ms
Averages	1
Concatenations	1
AutoAlign	Head > Brain
Coil Elements	HEA;HEP

**Contrast - Common**

TR	2000.0 ms
TE	30.00 ms
MTC	Off
Flip Angle	85 deg
Fat-Water Contrast	Fat Saturation
Reconstruction	Magnitude

**Contrast - Dynamic**

Dynamic Mode	Standard
Measurements	200
Delay in TR	0.00 ms

**Resolution - Common**

FoV Read	192 mm
FoV Phase	100.0 %
Slice Thickness	3.0 mm
Base Resolution	64
Phase Resolution	100 %
Interpolation	Off

**Resolution - Acceleration**

Acceleration mode	GRAPPA
Reference Scans	EPI/Separate
Acceleration Factor PE	2
Reference Lines PE	32
Phase Partial Fourier	Off

**Resolution - Filter**

Raw Filter	Off
Elliptical Filter	On
Hamming	Off
Distortion Correction	Off
Normalize	Prescan

**Geometry - Common**

Slice Group	1
Slices	35
Distance Factor	10 %
Position	R0.8 P5.9 H10.6 mm
Orientation	T > C-16.5 > S0.6
Phase Encoding Dir.	A >> P
Phase Oversampling	0 %
FoV Read	192 mm
FoV Phase	100.0 %
Slice Thickness	3.0 mm
TR	2000.0 ms
Multi-Slice Mode	Interleaved
Series	Interleaved
Concatenations	1

**Geometry - AutoAlign**

Slice Group	1
Position	R0.8 P5.9 H10.6 mm
Orientation	T > C-16.5 > S0.6
Phase Encoding Dir.	A >> P
AutoAlign	Head > Brain
Initial Position	R0.8 P5.9 H10.6
R	0.8 mm
P	5.9 mm
H	10.6 mm
Initial Orientation	T > C
T > C	-16.50
> S	0.60
Initial Rotation	-1.12 deg

**Geometry - Saturation**

Special Saturation	None
--------------------	------

**Geometry - Tim Planning Suite**

Set-n-Go Protocol	Off
Table Position	0 mm
Table Position	H
Inline Composing	Off

**System - Miscellaneous**

Coil Selection	Auto Coil Select
MSMA	S - C - T
Sagittal	R >> L
Coronal	A >> P
Transversal	F >> H
Coil Combination	Adaptive Combine
Matrix Optimization	Off

**System - Adjustments**

Adjustment Strategy	Standard
B0 Shim	Standard
B1 Shim	TrueForm
Adjustment Tolerance	Auto

**System - Adjustments**

Adjust with Body Coil	Off
Confirm Frequency	Never
Assume Silicone	Off

**System - Adjust Volume**

Position	R0.8 P5.9 H10.6 mm
Orientation	T > C-16.5 > S0.6
Rotation	-1.12 deg
A >> P	192 mm
R >> L	192 mm
F >> H	116 mm
Reset	Off

**System - Tx/Rx**

Frequency 1H	123.256229 MHz
? Ref. Amplitude 1H	0.000 V
Reset	Off
Correction Factor	1.00
Image Scaling	1.000

**Physio - Signal**

1st Signal/Mode	None
TR	2000.0 ms
Concatenations	1

**BOLD**

GLM Statistics	Off
Ignore Meas. at Start	0
Ignore After Transition	0
Model Transition States	On
Temp. Highpass Filter	On
Threshold	2.50
Paradigm Size	66
Meas[1]	Active
Meas[2]	Active
Meas[3]	Active
Meas[4]	Active
Meas[5]	Active
Meas[6]	Active
Meas[7]	Active
Meas[8]	Active
Meas[9]	Active
Meas[10]	Active
Meas[11]	Active
Meas[12]	Active
Meas[13]	Active
Meas[14]	Active
Meas[15]	Active
Meas[16]	Active
Meas[17]	Active
Meas[18]	Active
Meas[19]	Active
Meas[20]	Active
Meas[21]	Active
Meas[22]	Active
Meas[23]	Ignore
Meas[24]	Ignore
Meas[25]	Ignore
Meas[26]	Ignore
Meas[27]	Ignore
Meas[28]	Ignore
Meas[29]	Ignore
Meas[30]	Ignore
Meas[31]	Ignore

**BOLD**

Meas[32]	Ignore
Meas[33]	Ignore
Meas[34]	Ignore
Meas[35]	Ignore
Meas[36]	Ignore
Meas[37]	Ignore
Meas[38]	Ignore
Meas[39]	Ignore
Meas[40]	Ignore
Meas[41]	Ignore
Meas[42]	Ignore
Meas[43]	Ignore
Meas[44]	Ignore
Meas[45]	Active
Meas[46]	Active
Meas[47]	Active
Meas[48]	Active
Meas[49]	Active
Meas[50]	Active
Meas[51]	Active
Meas[52]	Active
Meas[53]	Active
Meas[54]	Active
Meas[55]	Active
Meas[56]	Active
Meas[57]	Active
Meas[58]	Active
Meas[59]	Active
Meas[60]	Active
Meas[61]	Active
Meas[62]	Active
Meas[63]	Active
Meas[64]	Active
Meas[65]	Active
Meas[66]	Active
Motion Correction	On
Spatial Filter	On
Filter Width	4.0 mm
Measurements	200
Delay in TR	0.00 ms

**Sequence - Part 1**

Sequence Name	epfid
Excitation	Standard
RF Pulse Type	Normal
Gradient Mode	Fast*
Bandwidth	2368 Hz/Px
Echo Spacing	0.53 ms
Free Echo Spacing	Off
EPI Factor	64

**Sequence - Part 2**

Introduction	Off
--------------	-----

\\NRA\Schädel\_32ch\lschämie\CRPPstroke20191228\_32ch\_New\_Patients6-1t1mprage\_tra\_HighRes\_ Nch\_32ch \*

TA: 8:14 min Coil Selection: Auto Voxel Size: 0.8×0.8×1.0 mm<sup>3</sup> Acc.: 2 Rel. SNR: 1.00

### Properties

Start measurement without further preparation	On
Wait for User to Start	Off
Start measurements	Single Measurement
Prio Recon	Off
Auto Open Inline Display	Off
Auto Close Inline Display	Off
Load Images to MR View&GO	On
Auto Store Images	On
Load Images to Stamp Segments	Off
Load Images to Graphic Segments	Off
Graphic segment	Default
Inline Movie	Off

### Routine

Slab Group	1
Slabs	1
Distance Factor	50 %
Position	L0.0 P1.6 H13.6 mm
Orientation	Transversal
Phase Encoding Dir.	R >> L
Slices per Slab	176
Phase Oversampling	10 %
Slice Oversampling	27.3 %
FoV Read	230 mm
FoV Phase	100.0 %
Slice Thickness	1.0 mm
TR	2200.0 ms
TE	5.17 ms
Averages	1
Concatenations	1
AutoAlign	Head > Brain
Coil Elements	HEA;HEP

### Contrast - Common

TR	2200.0 ms
TE	5.17 ms
Magn. Preparation	Non-sel. IR
TI	900 ms
Flip Angle	8 deg
Fat-Water Contrast	Standard
Dark Blood	Off
Reconstruction	Magnitude

### Contrast - Dynamic

Dynamic Mode	Standard
Measurements	1
Multiple Series	Each Measurement
Reordering	Linear Rot.

### Resolution - Common

FoV Read	230 mm
FoV Phase	100.0 %
Slice Thickness	1.0 mm
Base Resolution	288
Phase Resolution	100 %
Slice Resolution	100 %
Interpolation	Off

### Resolution - Acceleration

Acceleration mode	GRAPPA
Reference Scans	Integrated
Acceleration Factor PE	2
Reference Lines PE	24
Acceleration Factor 3D	1
Phase Partial Fourier	Off
Slice Partial Fourier	Off
Asymmetric Echo	Allowed
Elliptical Scanning	Off

### Resolution - Filter

Raw Filter	Off
Elliptical Filter	Off
Distortion Correction	3D
Normalize	Prescan
Image Filter	On

### Geometry - Common

Slab Group	1
Slabs	1
Distance Factor	50 %
Position	L0.0 P1.6 H13.6 mm
Orientation	Transversal
Phase Encoding Dir.	R >> L
Slices per Slab	176
Phase Oversampling	10 %
Slice Oversampling	27.3 %
FoV Read	230 mm
FoV Phase	100.0 %
Slice Thickness	1.0 mm
TR	2200.0 ms
Multi-Slice Mode	Single Shot
Series	Ascending
Concatenations	1

### Geometry - AutoAlign

Slab Group	1
Position	L0.0 P1.6 H13.6 mm
Orientation	Transversal
Phase Encoding Dir.	R >> L
AutoAlign	Head > Brain
Initial Position	L0.0 P1.6 H13.6
R	0.0 mm
P	1.6 mm
H	13.6 mm
Initial Orientation	Transversal
Initial Rotation	91.66 deg

### Geometry - Navigator

### Geometry - Tim Planning Suite

Set-n-Go Protocol	Off
Table Position	0 mm
Table Position	H
Inline Composing	Off

### System - Miscellaneous

Coil Selection	Auto Coil Select
MSMA	S - C - T

**System - Miscellaneous**

Sagittal	R >> L
Coronal	A >> P
Transversal	F >> H
Coil Combination	Adaptive Combine
Matrix Optimization	Off

**System - Adjustments**

Adjustment Strategy	Standard
B0 Shim	Tune up
B1 Shim	TrueForm
Adjustment Tolerance	Auto
Adjust with Body Coil	Off
Confirm Frequency	Never
Assume Silicone	Off

**System - Adjust Volume**

Position	Isocenter
Orientation	Transversal
Rotation	0.00 deg
A >> P	263 mm
R >> L	350 mm
F >> H	350 mm
Reset	Off

**System - Tx/Rx**

Frequency 1H	123.256229 MHz
? Ref. Amplitude 1H	0.000 V
Reset	Off
Correction Factor	1.00
Image Scaling	1.000

**Physio - Signal**

1st Signal/Mode	None
TR	2200.0 ms
Concatenations	1

**Physio - Cardiac**

Fat-Water Contrast	Standard
Magn. Preparation	Non-sel. IR
TI	900 ms
Dark Blood	Off
FoV Read	230 mm
FoV Phase	100.0 %
Phase Resolution	100 %
Dynamic Mode	Standard

**Physio - PACE**

Resp. Control	Off
Concatenations	1

**Inline - Subtraction**

Subtract	Off
Measurements	1
StdDev	Off
Save Original Images	On

**Inline - Cardiac**

Magn. Preparation	Non-sel. IR
Save Original Images	On
TE	5.17 ms
TR	2200.0 ms

**Inline - MIP**

MIP Sag	Off
MIP Cor	Off
MIP Tra	Off
MIP Time	Off
Radial MIP	Off
Save Original Images	On
MPR Sag	Off
MPR Cor	Off
MPR Tra	Off

**Inline - Composing**

Inline Composing	Off
------------------	-----

**Sequence - Part 1**

Sequence Name	tfl_r
Dimension	3D
Excitation	Slab-sel.
RF Pulse Type	Fast
Gradient Mode	Normal
Flow Compensation	On
Reordering	Linear Rot.
Bandwidth	250 Hz/Px
Echo Spacing	10.18 ms
Asymmetric Echo	Allowed
Turbo Factor	317

**Sequence - Part 2**

Introduction	On
RF Spoiling	On
Incr. Gradient Spoiling	On

**Sequence - Assistant**

SAR Assistant	Off
---------------	-----