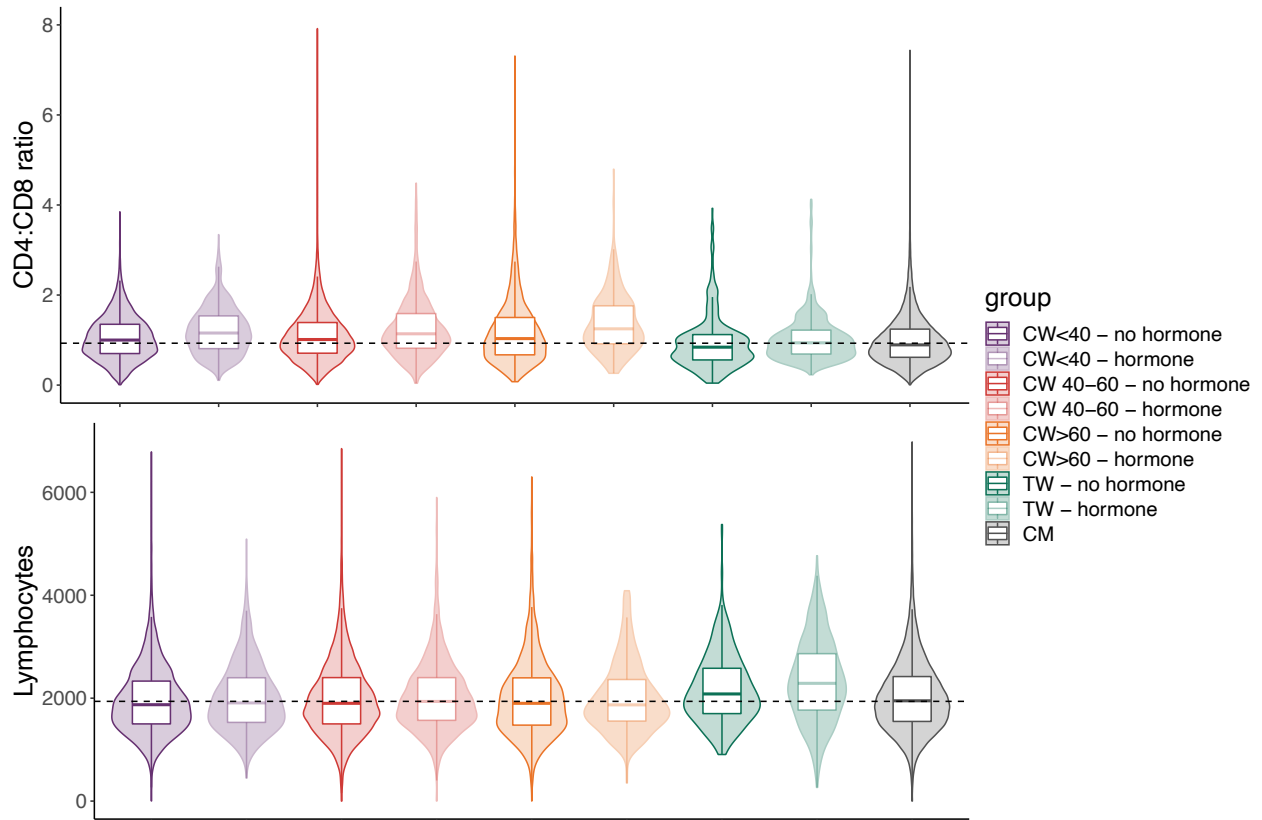
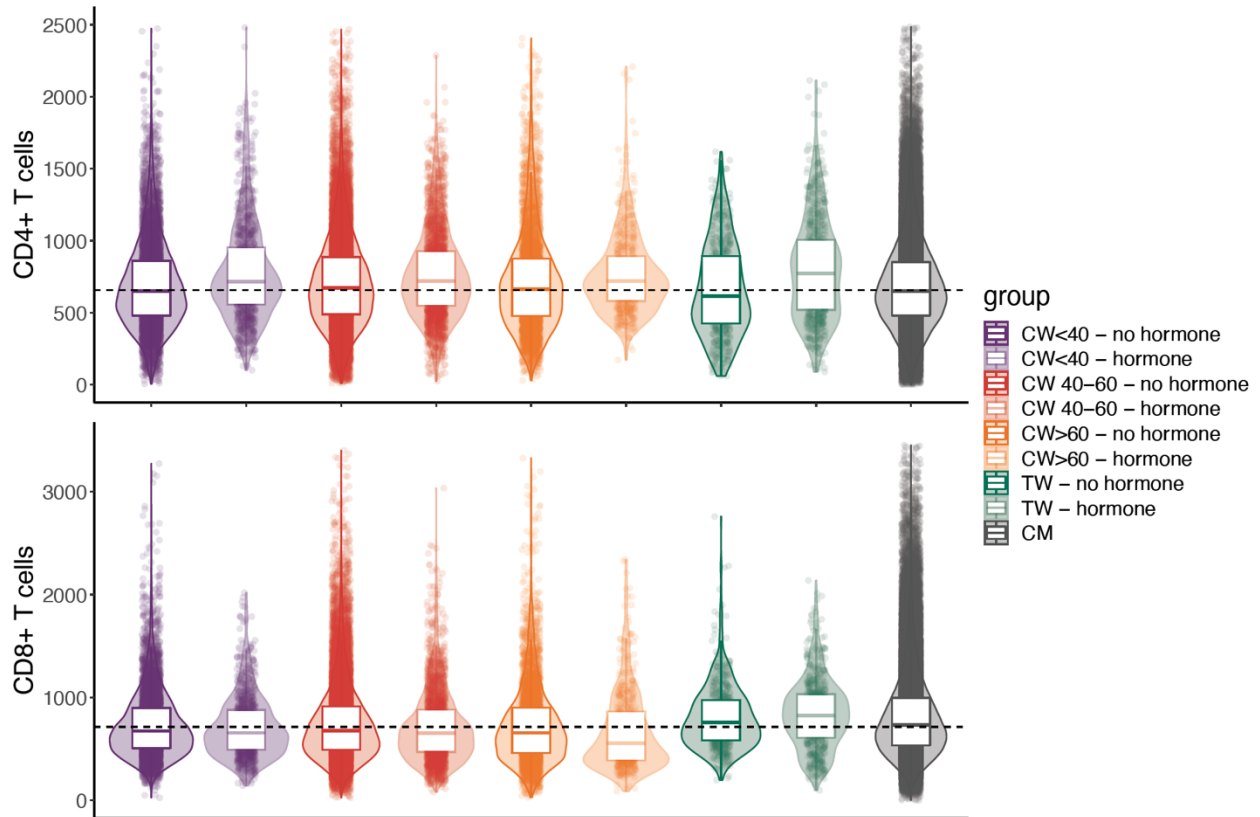


Supplementary material for: Delineating the effect of sex hormone intake on immunity in cis and trans women with HIV

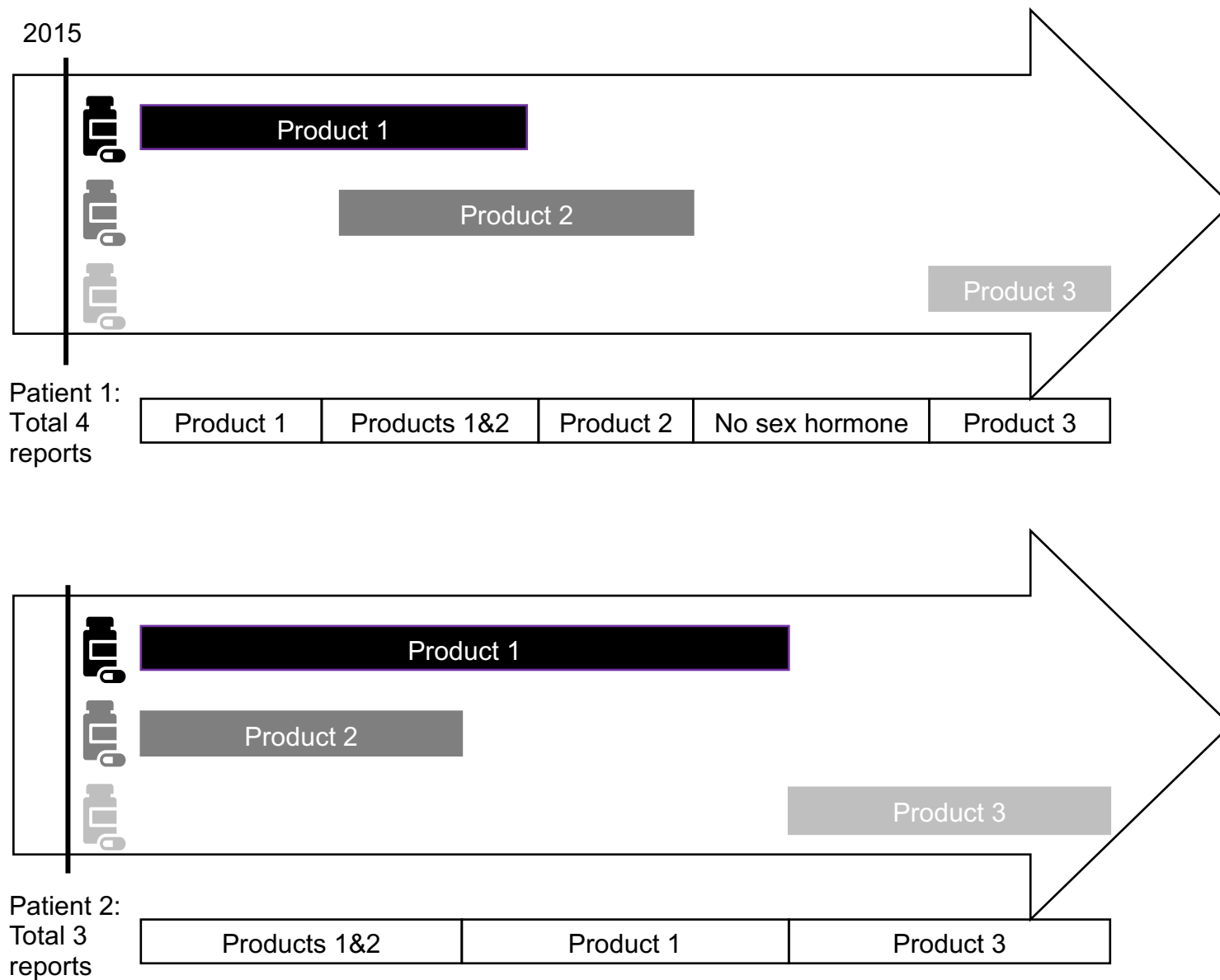
Supplementary Figure 1. Distribution of CD4:CD8 ratio and lymphocyte counts in the different studied populations: CW aged 40 and younger (purple), CW 40-60 years-old (red), CW older than 60 years-old (orange), TW (green) and cis men (CM, black). Dashed line corresponds to the median among all measurements (ratio=0.93, lymphocytes=1938 cells/ μ L). For display purposes, 34 measurements (ratio>8) and 61 measurements (lymphocytes>7000 cells/ μ L) were excluded from the plot.



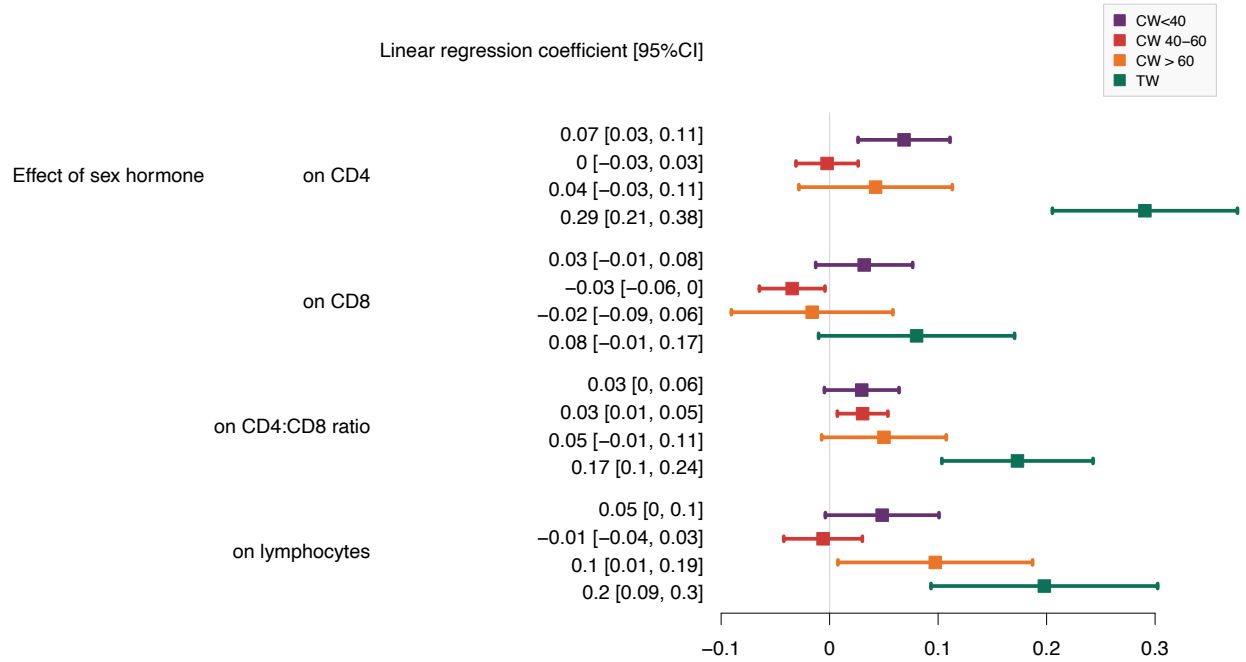
Supplementary Figure 2: Distribution of CD4+ and CD8+ T cell counts in the different studied populations: CW aged 40 and younger (purple), CW 40-60 years-old (red), CW older than 60 years-old (orange), TW (green) and cis men (CM, black). Dashed line corresponds to the median among all measurements (CD4=657 cells/ μ L, CD8=715 cells/ μ L). For display purposes, 34 measurements (CD4>2500 cells/ μ L) and 77 measurements (CD8>3500 cells/ μ L) were excluded from the plot. Each dot corresponds to an individual laboratory measurement.



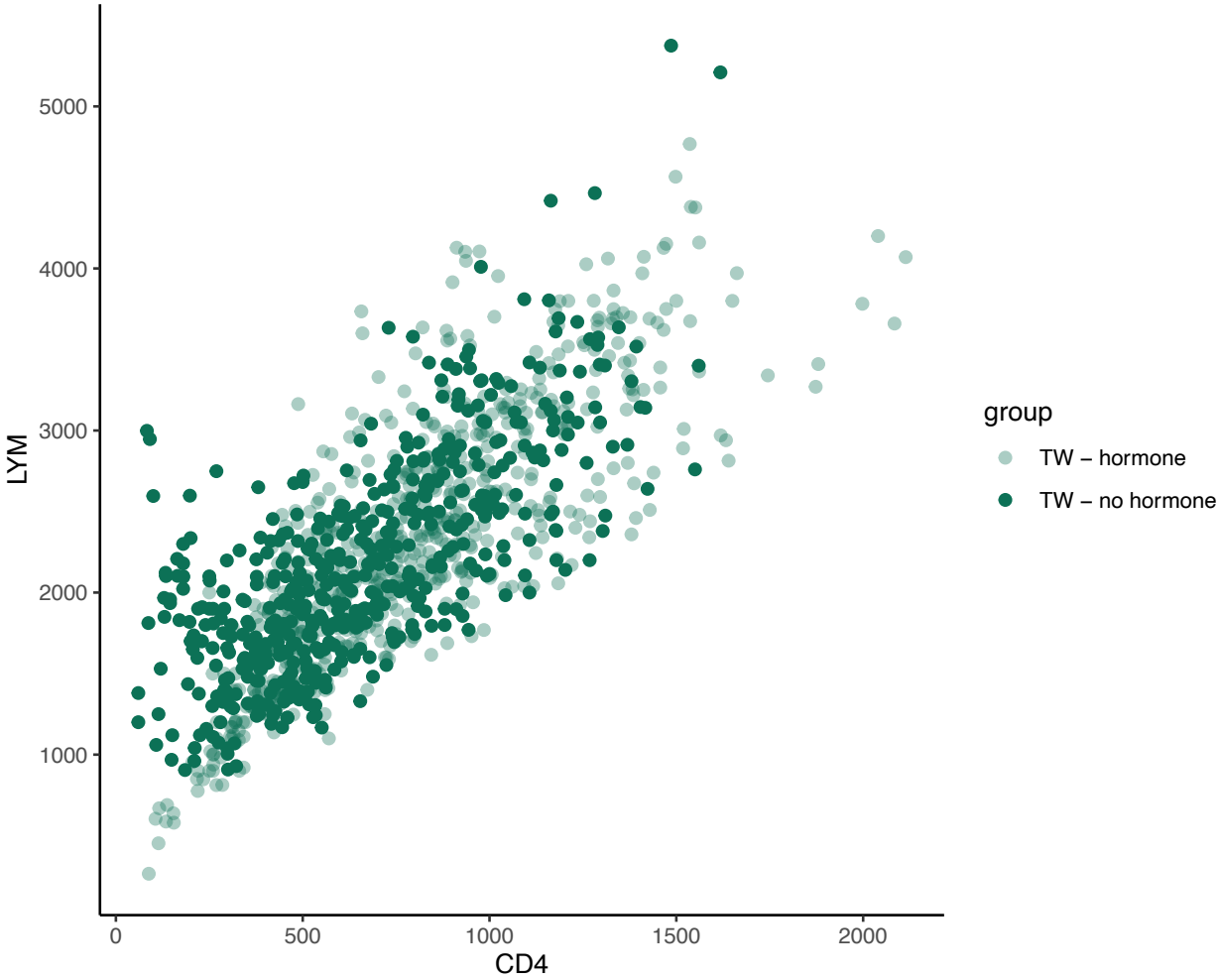
Supplementary Figure 3. Method of defining sex hormone reports using data from the SHCS. Products are combined when they overlap on a given period of time. Each period starting with a new product or combination of products is considered as a new report.



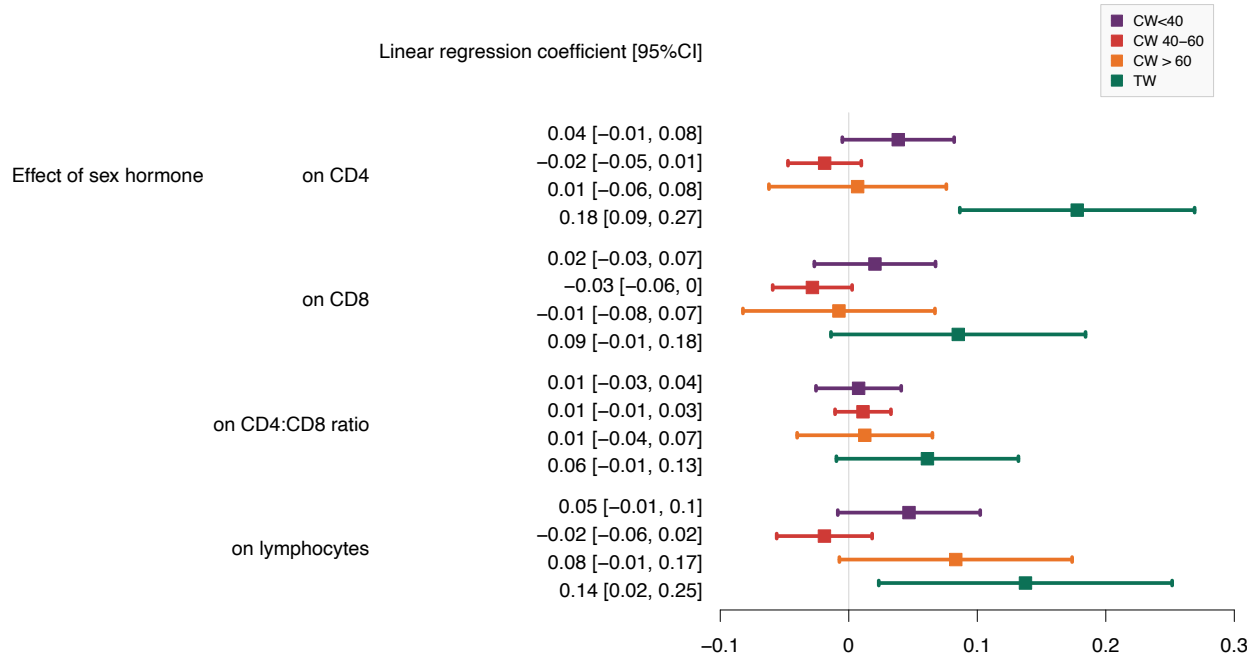
Supplementary Figure 4. Effect of sex hormone intake in CW<40 (purple), CW 40-60 (red), CW>60 (orange), and TW (green) on the scaled studied outcomes: CD4 counts, CD8 counts, CD4:CD8 ratio and lymphocytes counts in univariable models (i.e., unadjusted for confounders).



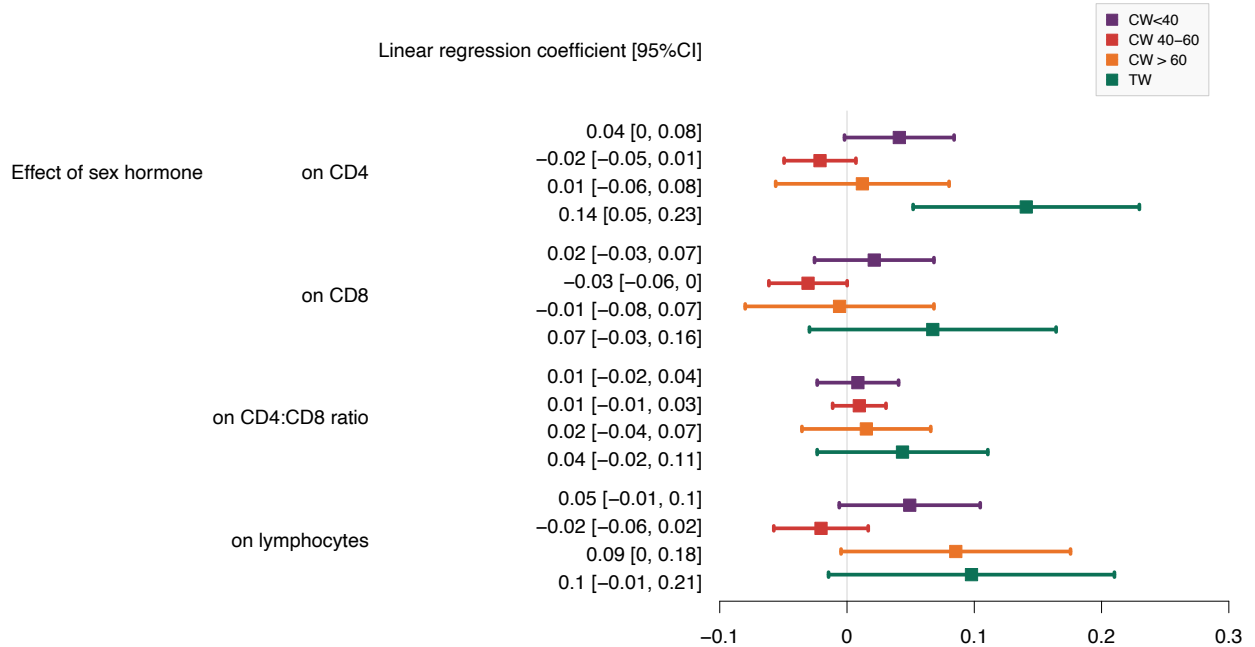
Supplementary Figure 5. Lymphocyte counts versus CD4 counts in TW not under sex hormone (dark green) and under sex hormone (light green)



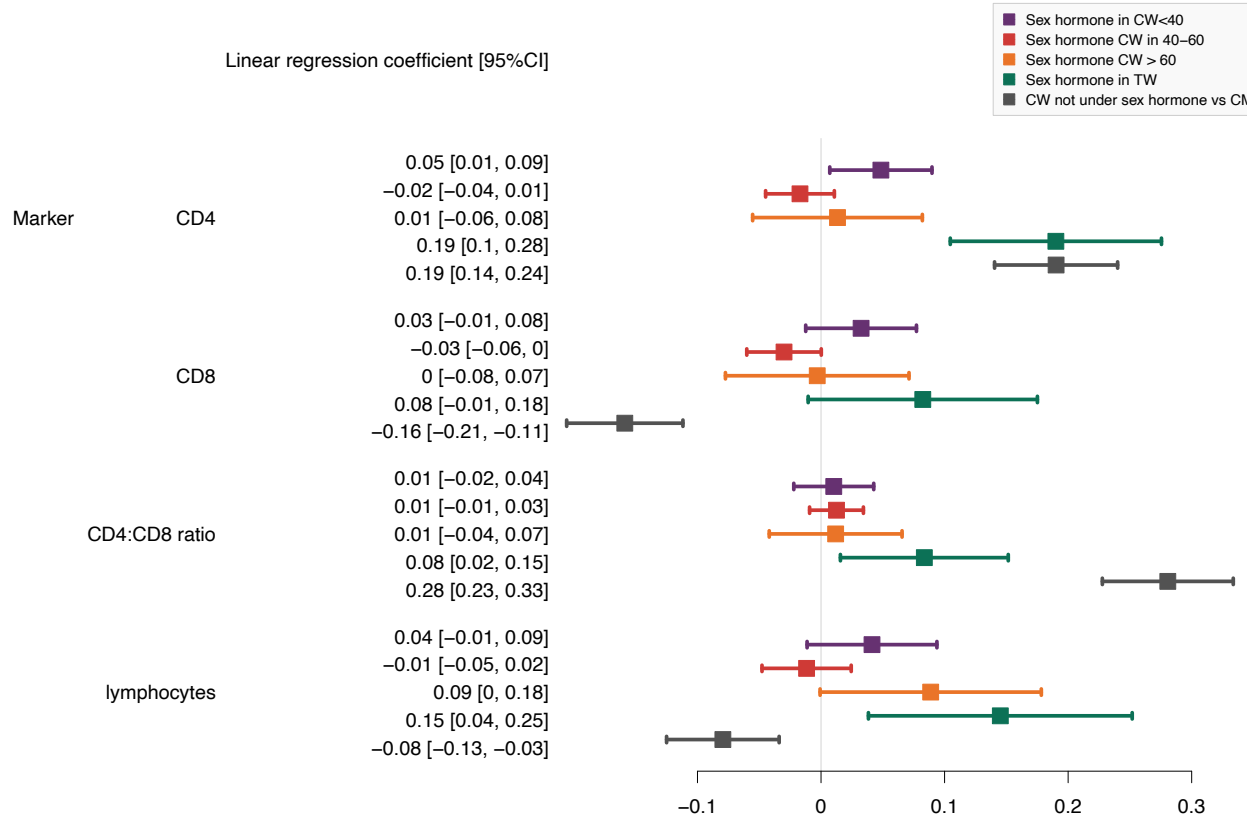
Supplementary Figure 6. Sensitivity analysis adjusted on smoking and co-infections.



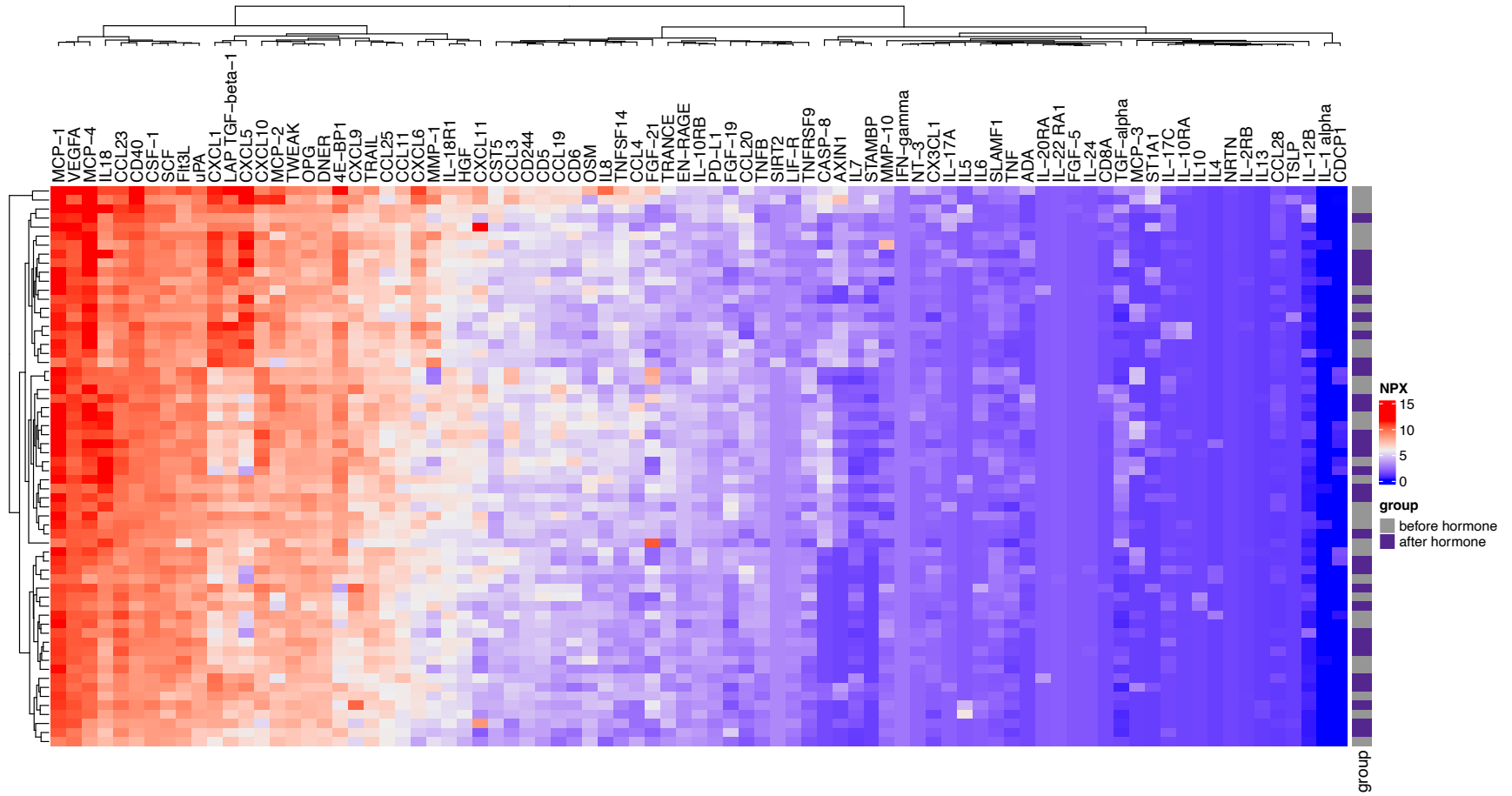
Supplementary Figure 7. Sensitivity analysis adjusted on viral load, self-reported adherence, and depression.



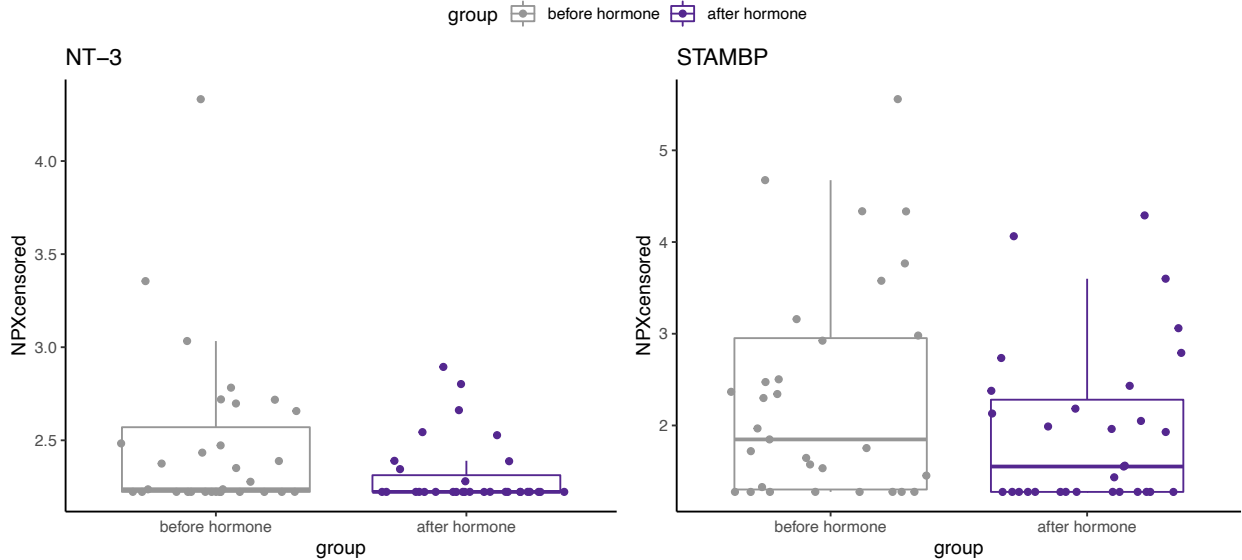
Supplementary Figure 8. Comparison of the effect of sex hormones in CW<40 (purple), CW 40-60 (red), CW>60 (orange), and TW (green) and the difference between CW and CM (dark grey) on the studied immune markers



Supplementary Figure 9. Heatmap representing the normalized protein expression (NPX) in the 62 studied plasma samples and their classification in two groups: before sex hormone intake (grey) and after sex hormone intake (purple).



Supplementary Figure 10. Normalized protein expression (NPX) of NT-3 and STAMBP in plasma samples before sex hormone intake (grey) and after (purple). Boxplots represent the following: median with the middle line, upper and lower quartiles with the box limits, 1.5x interquartile ranges with the whiskers.



Supplementary table 1: Self-reported adherence, viral load (copies/mL), and depression in the different studied groups, with sex hormone intake or not.

	CW < 40		CW 40-60		CW > 60yo		TW	
	No (N=7968)	Yes (N=1115)	No (N=26666)	Yes (N=2781)	No (N=4981)	Yes (N=546)	No (N=521)	Yes (N=669)
Under sex hormones								
Self-reported adherence								
never missed	6336 (79.5%)	930 (83.4%)	22626 (84.8%)	2424 (87.2%)	4533 (91.0%)	504 (92.3%)	456 (87.5%)	600 (89.7%)
missed once a month	1008 (12.7%)	131 (11.7%)	2633 (9.9%)	284 (10.2%)	302 (6.1%)	28 (5.1%)	50 (9.6%)	48 (7.2%)
missed more than once every 2 weeks	624 (7.8%)	54 (4.8%)	1407 (5.3%)	73 (2.6%)	146 (2.9%)	14 (2.6%)	15 (2.9%)	21 (3.1%)
VL								
<50	7445 (93.4%)	1075 (96.4%)	25512 (95.7%)	2697 (97.0%)	4773 (95.8%)	545 (99.8%)	475 (91.2%)	659 (98.5%)
50-1000	379 (4.8%)	32 (2.9%)	904 (3.4%)	60 (2.2%)	182 (3.7%)	0 (0%)	39 (7.5%)	9 (1.3%)
>1000	144 (1.8%)	8 (0.7%)	250 (0.9%)	24 (0.9%)	26 (0.5%)	1 (0.2%)	7 (1.3%)	1 (0.1%)
Depression								
No	7082 (88.9%)	965 (86.5%)	22334 (83.8%)	2326 (83.6%)	4207 (84.5%)	444 (81.3%)	402 (77.2%)	503 (75.2%)
Yes	886 (11.1%)	150 (13.5%)	4332 (16.2%)	455 (16.4%)	774 (15.5%)	102 (18.7%)	119 (22.8%)	166 (24.8%)

Supplementary Table 2. Comparison between protein concentration before and after sex hormone levels. For each protein, we display the test used (paired t.test if no left-censored data, cen_paired if left-censored data), its corresponding p-value, and the adjusted p-value using FDR method.

Assay	pval.test	pval.adjust	test
NT-3	0.019	0.760	cen_paired
STAMBP	0.032	0.760	cen_paired
CD244	0.064	0.760	t.test
CD6	0.066	0.760	t.test
IL6	0.070	0.760	cen_paired
IL7	0.084	0.760	cen_paired
CASP-8	0.091	0.760	cen_paired
MCP-4	0.100	0.760	t.test
TNFSF14	0.109	0.760	t.test
IL18	0.113	0.760	t.test
AXIN1	0.142	0.841	cen_paired
CCL19	0.165	0.841	t.test
IL-17C	0.193	0.841	cen_paired
CCL4	0.207	0.841	cen_paired
LAP TGF-beta-1	0.208	0.841	t.test
TGF-alpha	0.264	0.841	t.test
MCP-1	0.265	0.841	t.test
CXCL11	0.277	0.841	t.test
CXCL6	0.291	0.841	t.test
uPA	0.312	0.841	t.test
OSM	0.316	0.841	t.test
MMP-10	0.350	0.841	t.test
CD40	0.352	0.841	t.test
TNFRSF9	0.366	0.841	t.test
CD5	0.368	0.841	t.test
ST1A1	0.383	0.841	cen_paired
CXCL5	0.396	0.841	t.test
IL-10RA	0.398	0.841	cen_paired
CXCL1	0.420	0.841	t.test
4E-BP1	0.429	0.841	t.test
CCL20	0.430	0.841	t.test
OPG	0.439	0.841	t.test
IL8	0.440	0.841	t.test
FGF-21	0.456	0.841	cen_paired
HGF	0.466	0.841	t.test
CCL11	0.467	0.841	t.test
ADA	0.468	0.841	cen_paired
CX3CL1	0.483	0.841	t.test
CSF-1	0.497	0.841	t.test
TNF	0.502	0.841	t.test
TRAIL	0.528	0.850	t.test
CCL3	0.549	0.850	t.test
MCP-2	0.555	0.850	t.test
PD-L1	0.558	0.850	t.test
DNER	0.581	0.866	t.test
TNFB	0.602	0.866	t.test
EN-RAGE	0.608	0.866	t.test
VEGFA	0.624	0.871	t.test
MCP-3	0.665	0.893	cen_paired
CCL25	0.668	0.893	t.test
CST5	0.688	0.893	t.test
IL-18R1	0.702	0.893	t.test
LIF-R	0.723	0.893	t.test
SCF	0.739	0.893	t.test
Flt3L	0.741	0.893	t.test
IL-17A	0.759	0.893	cen_paired
CCL23	0.774	0.893	t.test
TWEAK	0.781	0.893	t.test
IL-12B	0.792	0.893	cen_paired
MMP-1	0.807	0.893	t.test
CCL28	0.813	0.893	cen_paired
SLAMF1	0.862	0.931	t.test
IL-10RB	0.886	0.942	t.test
CXCL10	0.906	0.943	t.test
CXCL9	0.915	0.943	t.test
TRANCE	0.958	0.965	t.test
FGF-19	0.965	0.965	cen_paired