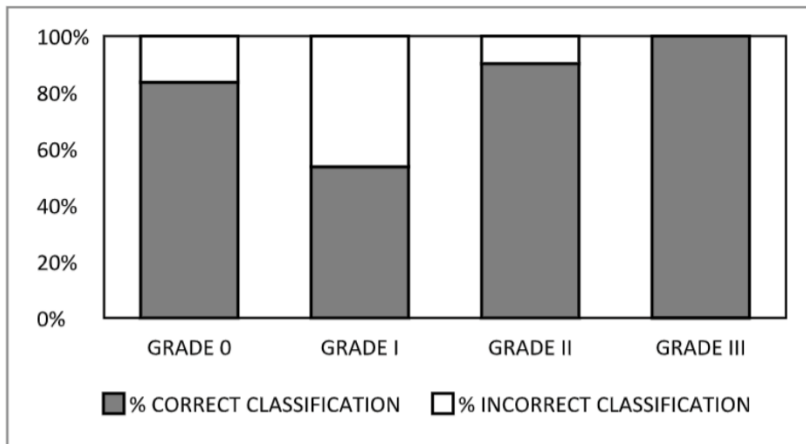
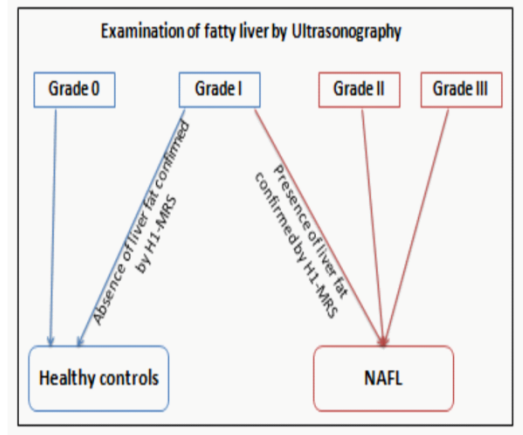


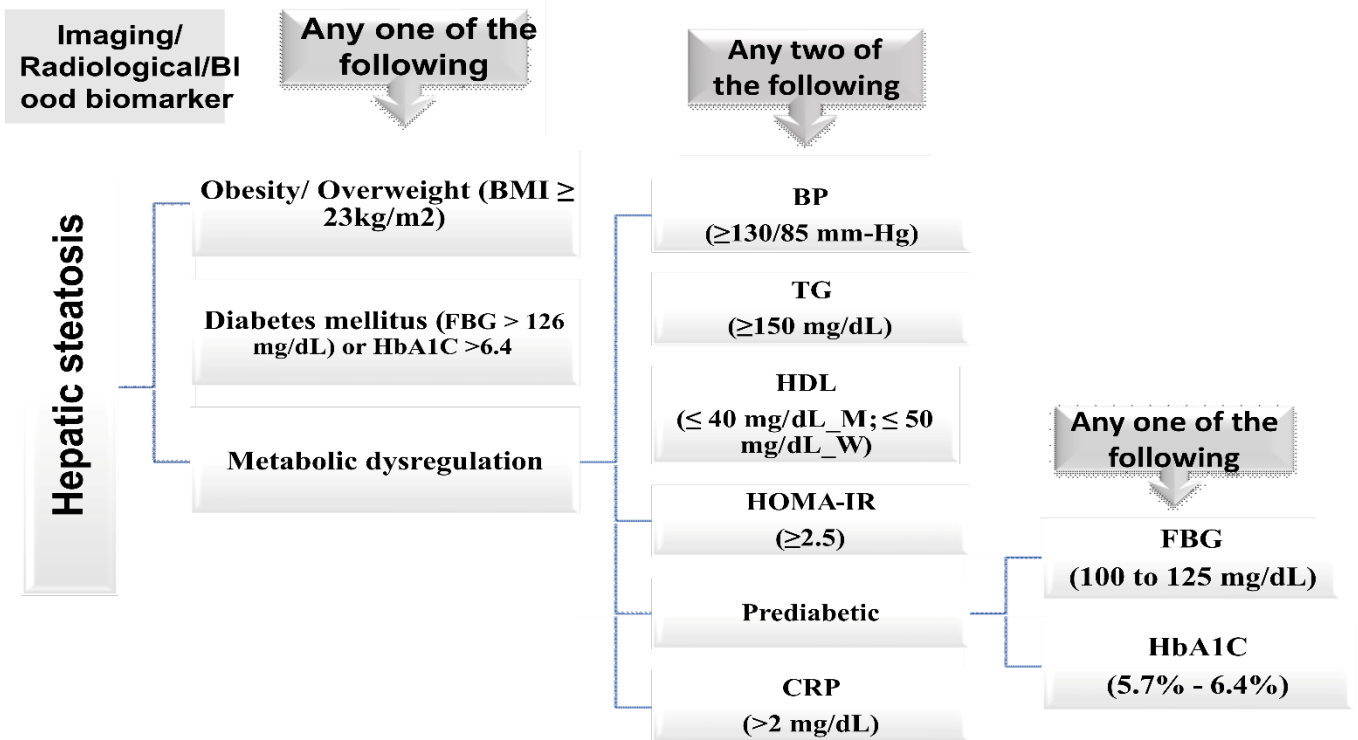
A



B

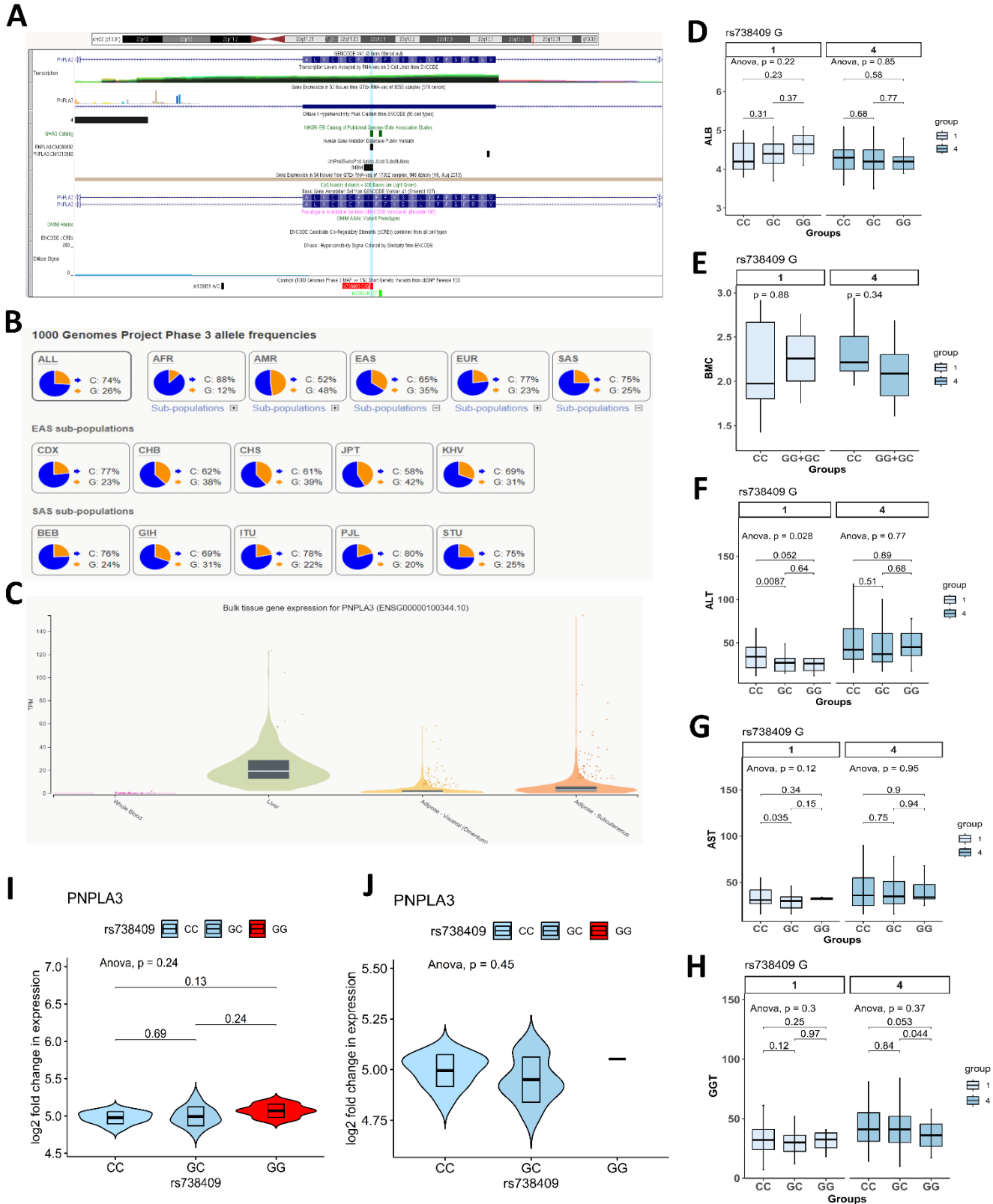


C



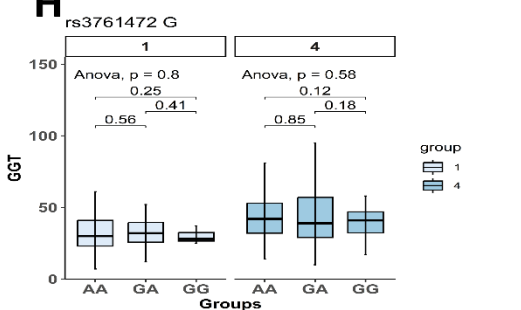
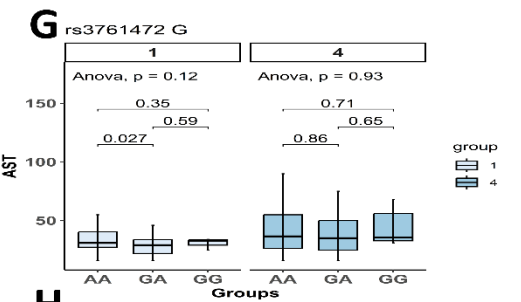
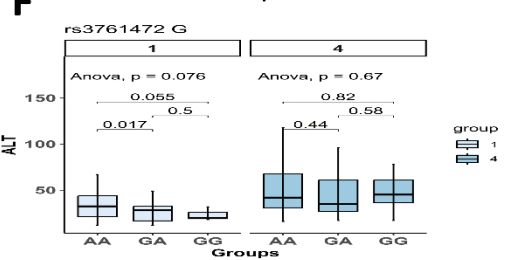
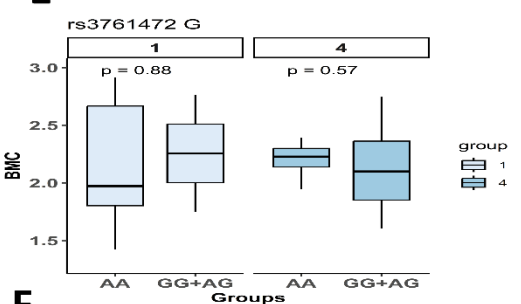
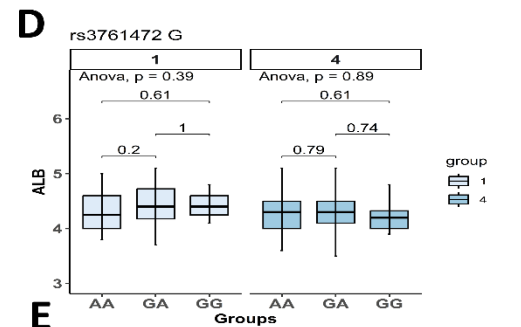
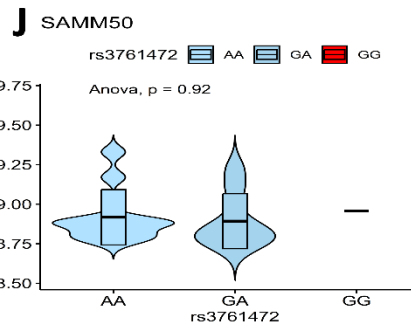
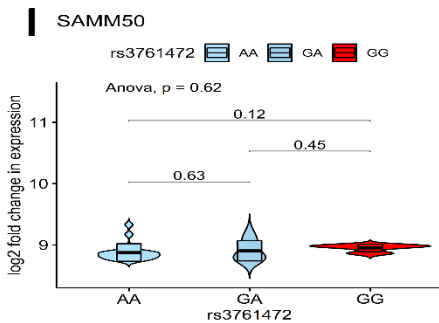
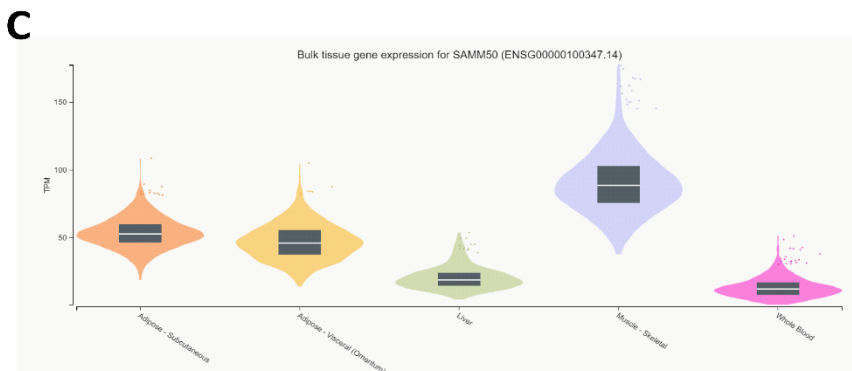
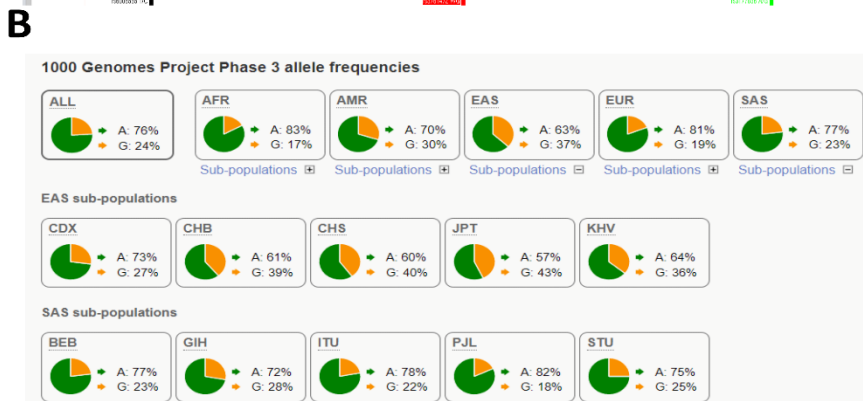
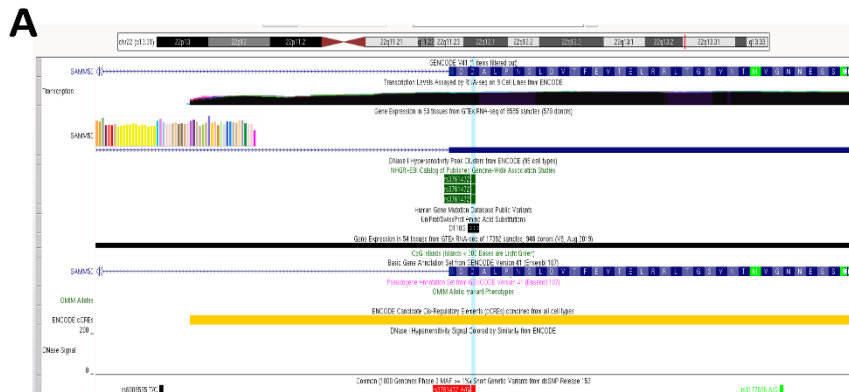
Supplementary figure 1:

A) Concordance of diagnosis of fatty liver performed by both MRS and ultrasonography; B) Diagnostic definitions of healthy and fatty liver patients, followed in our study; C) Diagnostic definition of Group4 FLD+/MeS+



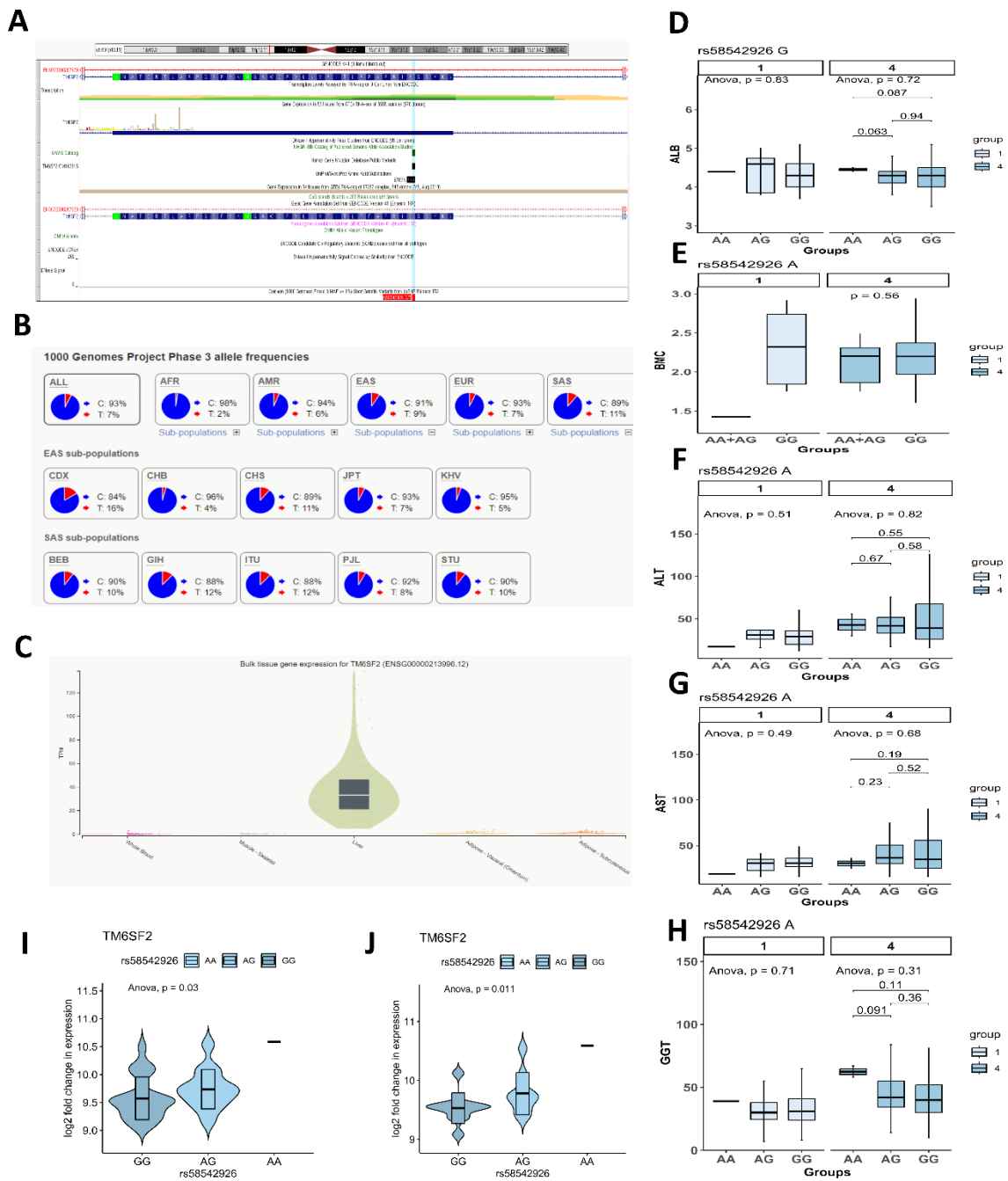
Supplementary figure 2: Details of rs738409

A) Genomic annotation of rs738409 in PNPLA3 gene from dbSNP Short Genetic Variations (hg19); B) 1000 Genomes Project Phase 3 allele frequencies from ensembl.org; C) Gene expression from GTEx portal for five different tissue types – adipose, skeletal and liver; D-H) Distribution of liver damage markers and bone mineral content among different genotypes; I- J) violin plots showing the effects of eQTL on PNPLA3 gene expression in our study cohort.



Supplementary figure 3: Details of rs3761472

A) Genomic annotation of rs3761472 in SAMM50 gene from dbSNP Short Genetic Variations (hg19) ; B) 1000 Genomes Project Phase 3 allele frequencies from ensembl.org ; C) Gene expression from GTEx portal for five different tissue types – adipose, skeletal and liver ; D-H) Distribution of liver damage markers and bone mineral content among different genotypes ; I- J) violin plots showing the effects of eQTL on SAMM50 gene expression in our study cohort.



Supplementary figure 4: Details of rs58542926

A) Genomic annotation of rs58542926 in TM6SF2 gene from dbSNP Short Genetic Variations (hg19) ; B) 1000 Genomes Project Phase 3 allele frequencies from ensembl.org ;C) Gene expression from GTEx portal for five different tissue types – adipose, skeletal and liver; D-H) Distribution of liver damage markers and bone mineral content among different genotypes ;I- J) violin plots showing the effects of eQTL on TM6SF2 gene expression in our study cohort.

Supplementary Table 1: Comparison of clinicopathological parametrs between fatty liver individuals and without fatty liver individuals				
	Parameters (unit)	FAT+ (n=260)	FAT- (n=291)	p-value
	Age (Years)	41.46±10.45	42.11±12.36	5.80E-01
	MALE:FEMALE	125:135	163:128	
Anthropometry	Weight(Kg)	66.87±9.95	58.2±11.48	7.29E-20
	BMI (Kg/m2)	26.97±3.85	23.13±4.3	5.95E-26
	HC (cm)	100.34±8.53	94.71±7.76	4.49E-12
	Waist circumference(cm)	93.2±8.6	84.13±11.3	1.66E-24
Diabetes	FBG (mg/dL)	96.08±36.13	85.81±19.83	0.00E+00
	Hba1c (mg/dL)	6.19±1.52	5.54±0.86	0.00E+00
	Fasting Insulin (IU/mL)	9.05±6.5	6.98±6.21	1.00E-03
	HOMAIR	2.24±2.48	1.58±2.46	7.00E-03
Liver damage marker	ALT (IU/l)	54.25±38.83"	34.05±21.07	0.00E+00
	AST (IU/l)	43.58±26.69	31.24±11.51	0.00E+00
	GGT (IU/l)	46.6±29.08	37.09±21.67	2.24E-05
Lipid level	Triglyceride (mg/dL)	165.11±96.05	144.54±88.73	9.87E-03
	Total cholesterol (mg/dL)	183.33±43.58	169.74±41.36	2.20E-04
	HDL (mg/dL)	39.13±9.2	42.43±11.63	2.40E-04
	LDL (mg/dL)	111.73±41.45	97.77±38.59	6.25E-05
	VLDL (mg/dL)	31.47±13.08	27.68±11.67	4.53E-04
	% with metabolic dysregulation	80.99	57.88	
Non-invasive Fibrosis marker	LSM (kPa)	6.45±3.2	5.25±3.63	1.81E-04
Inflammation marker	CRP (mg/dL)	4.9±3.81	3.7±3.29	8.95E-04
Blood pressure	SBP (mmHg)	126.11±17.13	124.7±18.67	3.60E-01
	DBP (mmHg)	80.36±11.16	77.97±11.52	1.53E-02
	Urea (mh/dL)	18.52 ± 6.22	18.65 ± 6.23	2.40E-01
	Creatinine (mg/dL)	0.97±0.17	0.98±0.19	6.10E-01
	SS(mm)	2.95±1.82	2.11±2.06	5.39E-07
	BSP(mm)	1.29±1.06	0.88±0.64	1.17E-07
	TSP(mm)	1.9±1.45	1.36±1.08	1.88E-06
	NU(mm)	2.14±1.37	1.69±1.22	7.71E-05
	SFT(mm)	8.24±5.37	6.05±4.51	3.71E-07

Suppl. Table 1:

Comparison of clinicopathological parameters between fatty liver individuals and without fatty liver individuals

Supplementary Table 2: Characteristics of body fat and muscle composition among the study groups											
parameters (Units)	Total (n=112)				p-value (adjusted for covariates)	Non-obese				Obese	
	Group 4 (n=60)	Group 3 (n=14)	Group 2 (n=31)	Group 1 (n=7)		p-value	Group 4	Group 3	Group 4	Group 3	p-value
TBF.DEXA.PC	49.06±18.47	39.84±14.83	41.05±14.28	38.41±11.91	0.055	1.04E-06	32.23±8.1 6	29.74±3.7 1	54.67±17.7 53	45.46±15.84 84	0.143
Android.fat	58.59±17.12	50.9±13.71	51.38±14.17	49.14±12.96	0.091	3.69E-05	44.49±8.3 8	42.18±5.4 9	63.4±16.7 2	55.74±14.71 71	0.189
Gynoid.fat	52.54±20.11	42.27±13.85	43.78±15.6	43.94±11.21	0.068	1.19E-06	34.47±8.4 5	33.68±3.5 1	58.7±19.2 2	47.04±15.28 28	0.067
TISSUE.MASS	66.6±10.89	65.79±9.04	62.13±8.38	54.3±9.8	0.0	1.973e-10	56.82±7.5 2	58.49±5.4 6	69.94±9.8 4	69.84±8.1 3	0.976
FAT.MASS	33.74±16.32	26.74±12.22	26.44±11.43	20.48±5.63	0.021	1.2e-06	18.39±5.2 6	17.38±2.6 9	38.85±15.53 53	31.93±12.4 4	0.167
LEAN.MASS	32.9±11.34	39.05±9.57	36.24±9.02	33.82±10.33	0.190	5.34E-04	38.43±6.2 6	41.11±4.6 7	31.01±12.37 1	37.91±11.57 57	0.132
FAT.FREE.MASS	34.87±11.95	41.52±10.12	38.4±9.48	35.98±10.84	0.176	5.88E-04	40.72±6.5 3	43.77±4.8 7	32.87±12.4 76	40.27±12.24 24	0.127
BMC	1.97±0.68	2.47±0.66	2.16±0.52	2.19±0.59	0.055	0.006208	2.29±0.34 2	2.67±0.34 34	1.86±0.73 2	2.36±0.78 78	0.101

Suppl. Table 2:

Characteristics of body fat and muscle composition among the study groups

Supplementary table 3: Details of the associated SNPs

1000 Genome																		
Risk allele frequency (MAF)																		
SNP	Gene	CHR	BP	Alleles	Risk allele	Type of nucleotide change	p-value	OR	R _s D	Group 1	Group 2	Group 3	Group 4	African	East Asian	Europe	South Asian	American
rs471364	TTC398	9	15289578	[T/C]	G	Silent	0.001	3.076 [2.0;rs471364]		0.284	0.21	0.205	0.205	0.358	C=0.2179	C=0.1044	C=0.1044	C=0.102
rs2281135	PNPLA3	22	44332570	[A/G]	A	Silent	0.001	2.911 [2.0;rs2281135]		0.266	0.355	0.393	0.393	0.25	A=0.1392	A=0.1988	A=0.239	A=0.435
rs7200543	PDXDC1	16	15129970	[A/G]	A	Synonymous_L	0.031	2.26 [1.08;rs7200543]		0.416	0.387	0.442	0.442	0.473	G=0.1846	G=0.3710	G=0.3062	G=0.442
rs3761472	SAMM50	22	44368122	[A/G]	G	Missense_D110	0.002	2.863 [2.0;rs3761472]		0.302	0.484	0.478	0.478	0.176	G=0.1710	G=0.3710	G=0.1879	G=0.297
rs10067427		5	99342047	[A/G]	G		0.003	0.8541 [0.1;rs1006742]		0.159	0.032	0.013	0.013	0.196	A=0.2950	A=0.7440	A=0.6173	A=0.674
rs738409	PNPLA3	22	44324727	[C/G]	G	Missense_148A	0.003	2.85 [1.98;rs738409]		0.317	0.419	0.429	0.429	0.176	G=0.1180	G=0.3502	G=0.2256	G=0.484
rs1020689	ALMS1P	2	73900900	[T/C]	G	Silent	0.003	2.759 [1.92;rs1020689]		0.392	0.129	0.188	0.188	0.203	C=0.6180	C=0.0060	C=0.2078	C=0.259
rs2068888		10	94839642	[A/G]	G		0.005	0.869 [0.8;rs2068888]		0.332	0.065	0.063	0.063	0.426	G=0.7428	G=0.2083	G=0.5139	G=0.533
rs6591182	EHRP1L1	11	65349756	[T/G]	A	Missense_V538	0.010	1.035 [1.0;rs6591182]		0.494	0.21	0.161	0.161	0.432	G=0.3101	G=0.4514	G=0.5060	G=0.378
							1.034											
							[1.02 ±											
rs1532085		15	58683366	[A/G]	G		0.014	1.047 [rs1532085]		0.44	0.419	0.388	0.388	0.412	A=0.5212	A=0.4940	A=0.3648	A=0.379
rs584292	TM6SF2	19	19379549	[T/C]	A	Missense_E167I	0.021	2.735 [1.8;rs584292]		0.491	0.032	0.116	0.116	0.5	T=0.0227	T=0.0863	T=0.0676	T=0.107
rs1088935	DOCK7	1	63118196	[A/C]	C	Silent	0.026	2.763 [1.9;rs1088935]		0.416	0.339	0.406	0.406	0.324	C=0.3918	C=0.1766	C=0.3012	C=0.344
rs1832007	AKR1C4	10	5254847	[A/G]	G	Silent	0.027	0.8627 [0.1;rs1832007]		0.105	0.032	0.022	0.022	0.074	G=0.0250	G=0.1111	G=0.1203	G=0.202
rs2800	SLC9A9	3	1.43E+08	[T/C]	G	Silent	0.028	3.007 [2.0;rs2800]		0.437	0.016	0.018	0.018	0.432	C=0.2950	C=0.5972	C=0.3400	C=0.357
rs571312		18	57839769	[A/C]	A		0.036	1.052 [1.0;rs571312]		0.323	0.032	0.032	0.032	0.243	A=0.3691	A=0.1815	A=0.2396	A=0.128
rs3566508	CECR5	22	17625915	[A/G]	A	Missense_T149I	0.038	2.783 [1.9;rs3566508]		0.012	0.387	0.433	0.433	0.047	A=0.0015	A=0.0000	A=0.0477	A=0.029
rs7805747	PRKAG2	7	1.51E+08	[A/G]	A	Silent	0.040	2.758 [1.9;rs7805747]		0.066	0.452	0.451	0.451	0.041	A=0.3245	A=0.0030	A=0.2883	A=0.173
rs972283		7	1.30E+08	[A/G]	A		0.041	1.052 [1.0;rs972283]		0.377	0	0.018	0.018	0.473	A=0.1233	A=0.3155	A=0.4394	A=0.360
rs1040196	SUGP1	19	19407718	[T/C]	G	Silent	0.043	2.72 [1.89;rs1040196]		0.162	0.306	0.379	0.379	0.095	C=0.1808	C=0.1071	C=0.0706	C=0.082
rs7703051		5	74625487	[A/C]	C		0.044	1.053 [1.0;rs7703051]		0.41	0.258	0.299	0.299	0.345	C=0.1808	C=0.1071	C=0.0706	C=0.082
rs7121446		11	1.22E+08	[A/G]	A		0.044	1.047 [1.0;rs7121446]		0.249	0.242	0.188	0.188	0.189	A=0.3888	A=0.0585	A=0.2416	A=0.164

Suppl. Table 3:

Details of the associated SNPs.