

Figure S1. T cell and B cell landscapes in LLNs from ILD patients compared with matched controls. (A) Box plots comparing the median fluorescence intensity of individual T cell markers based on all samples in batches 1-3. Fold change was calculated relative to the mean values of control samples, separately for each batch. (B) Representative UMAP of T cells. Each group (control vs ILD) contains 130,000 T cells concatenated from 13 individuals (10,000 cells per individual) in batch 1. (C) Fluorescence intensity of each T cell parameter overlaid on the UMAP plot. (D) Box plots comparing the median fluorescence intensity of individual B cell markers based on all samples in batches 1-3. Fold change was calculated relative to the mean values of control samples, separately for each batch. (E) Representative UMAP of B cells. Each group (control vs ILD) contains 130,000 B cells concatenated from 13 individuals (10,000 cells per individual) in batch 1. (F) Fluorescence intensity of each B cell parameter overlaid on the UMAP plot.

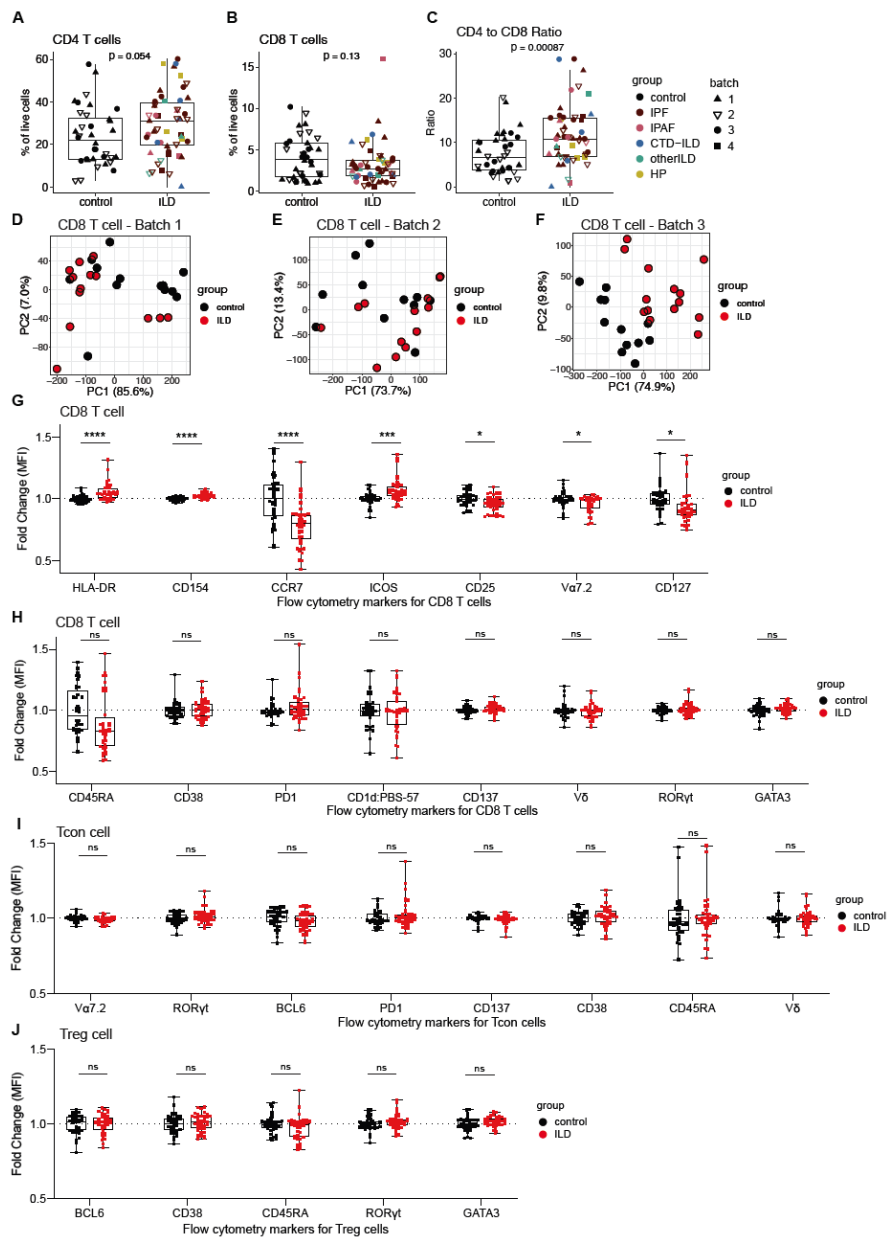


Figure S2. T cell subpopulations in LLNs from ILD patients compared with matched controls. (A) Comparison of CD4 T cell frequencies in control and ILD LLNs. **(B)** Comparison of CD8 T cell frequencies in control and ILD LLNs. **c.** Comparison of CD4 to CD8 T cell ratio in control and ILD LLNs. **(D-F)** PCA of CD8 T cells based on fluorescence intensities of 15 parameters: CD154, HLA-DR, CCR7, CD25, ICOS, CD127, GATA3, $V\alpha 7.2$, PBS-57 loaded CD1d tetramer, $V\delta$, PD1, ROR γ t, CD38, CD45RA and CD137. An analysis was run with 1,600 cells, 669 cells, and 1,100 cells for batch 1, batch 2, and batch 3, respectively. **(G-H)** Box plots comparing the median fluorescence intensity of individual CD8 T cell markers based on all samples in batches 1-3. **i.** Box plots comparing the median fluorescence intensity of individual Tcon markers based on all samples in batches 1-3. **j.** Box plots comparing the median fluorescence intensity of individual Treg markers based on all samples in batches 1-3. For all MFI comparisons, fold change was calculated relative to the mean values of control samples, separately for each batch. Parameters that are significantly associated with ILD based on a likelihood-ratio test on each logistic regression coefficient are shown. P-values were adjusted by Benjamini-Hochberg correction. $P < 0.05$ (*), $P < 0.01$ (**), $P < 0.001$ (***), $P < 0.0001$ (****).

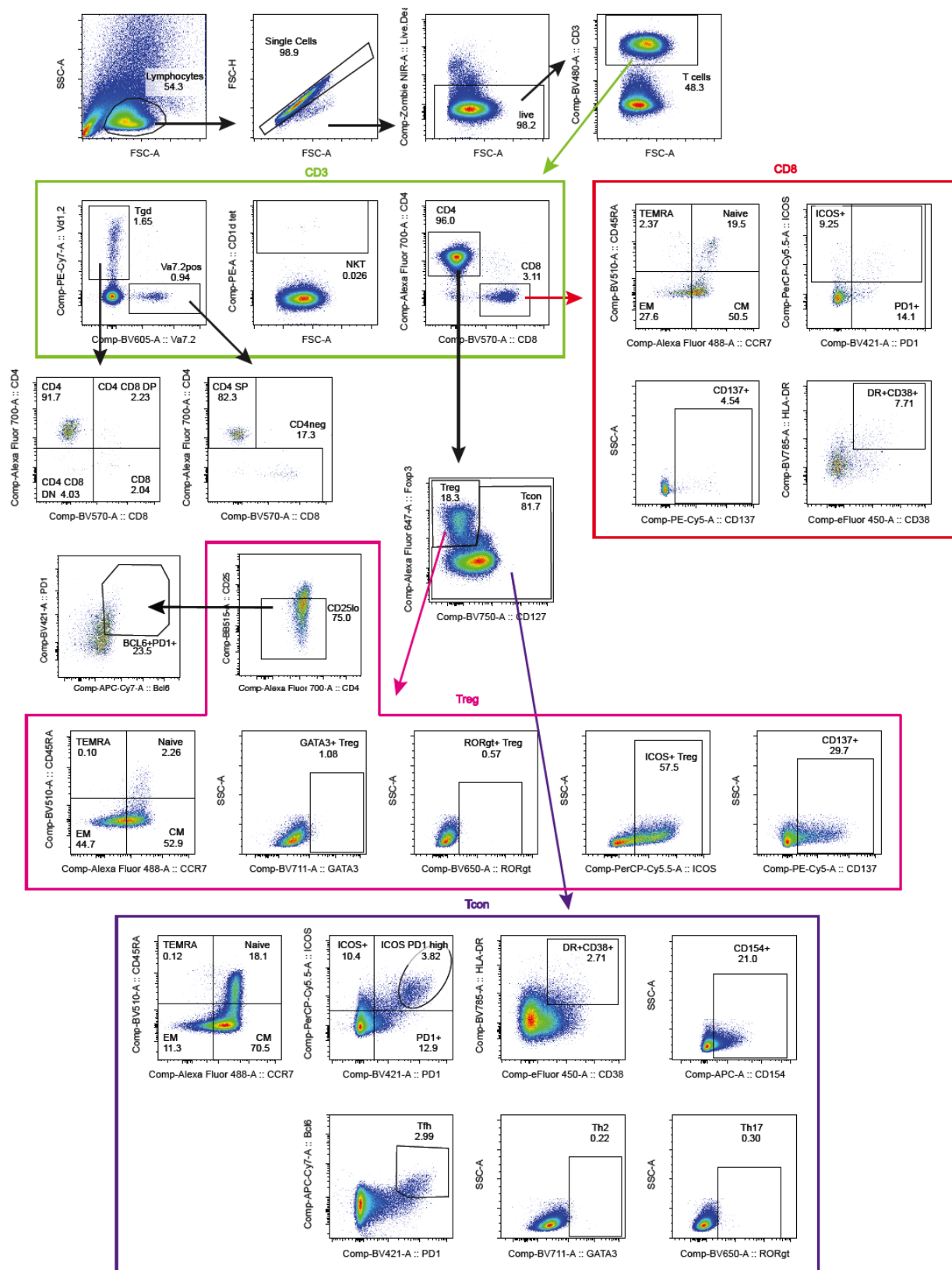


Figure S3. Gating strategies for T cell populations.

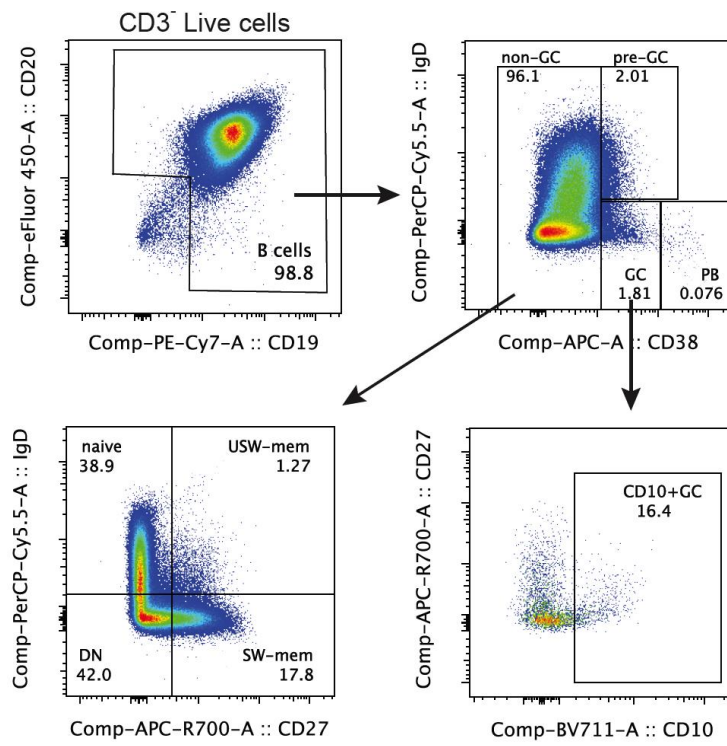


Figure S4. Gating strategies for B cell populations.

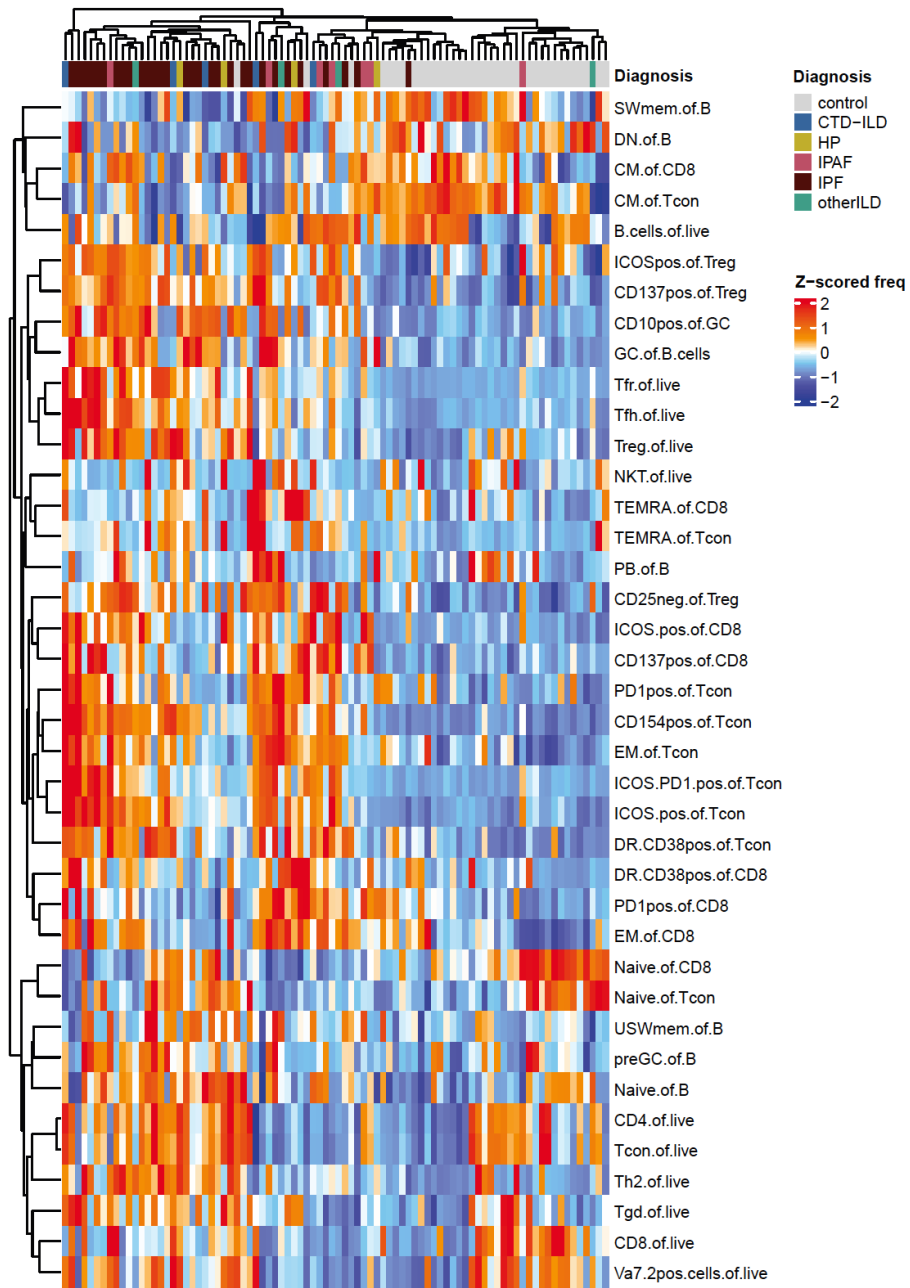


Figure S5. **Heatmap with unsupervised clustering based on immune cell abundance.** Heatmap visualization of a hierarchical clustering of control and ILD individuals based on z-scored frequencies of 39 immune cell populations.

```

Mixed-effects ML regression
Group variable: sampleID

Number of obs   =   274
Number of groups =   31

Obs per group:
    min =   2
    avg =  8.8
    max =  37

Wald chi2(3)   =   54.83
Prob > chi2    =   0.0000

Log likelihood = -972.3637

```

fv	Coef.	Std. Err.	z	P> z	[95% Conf. Interval]	
year	-1.453615	.3754472	-3.87	0.000	-2.189479	-.7177524
GCB_status	6.396411	5.580307	1.15	0.252	-4.54079	17.33361
GCB*year	-1.99864	.6660458	-3.00	0.003	-3.304066	-.6932146
_cons	55.72422	3.998668	13.94	0.000	47.88697	63.56146

Random-effects Parameters	Estimate	Std. Err.	[95% Conf. Interval]	
mrn: Identity				
var(_cons)	224.9574	59.48363	133.9751	377.7257
var(Residual)	47.42213	4.303841	39.69441	56.65427

LR test vs. linear model: chibar2(01) = 340.84 Prob >= chibar2 = 0.0000

Figure S6. Relationship between the lung function changes over time and GC B cell status in explanted LLNs. Mixed-effects regression modeling with a random intercept was used to analyze changes in forced vital capacity (FVC) over time (year) by germinal center B cell status (GCB_status) in explanted LLNs.

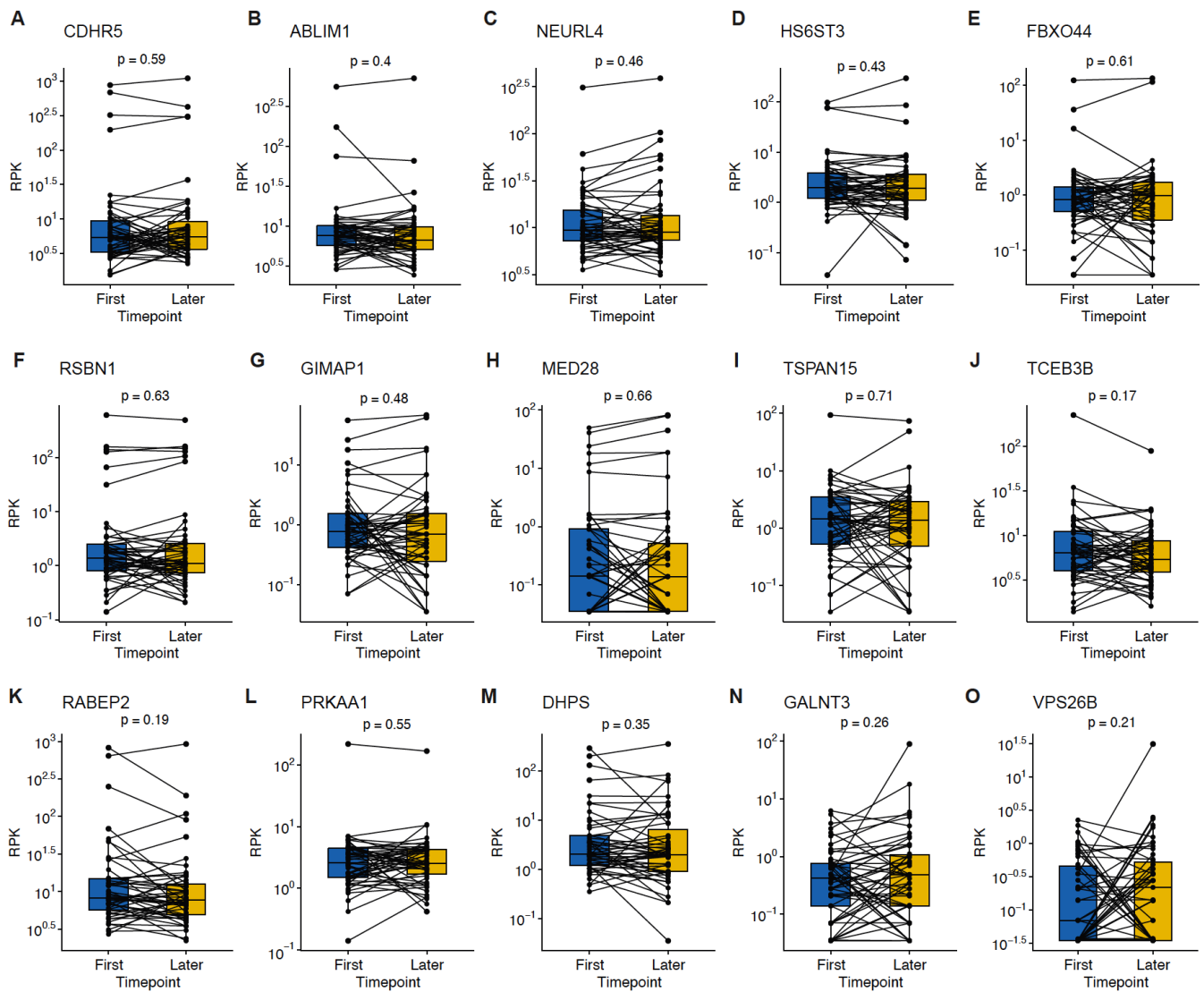


Figure S7. **Longitudinal analysis of autoantibody amounts in ILD plasma.** (A-O) Autoantibody signals based on PhIP-seq results (RPK: reads per 100k) were compared between longitudinally paired plasma samples from ILD patients (n=51). Intervals between the first and later time-points range between 98 to 2952 days. Paired Wilcoxon p-values are displayed for each of the 15 ILD antigens.

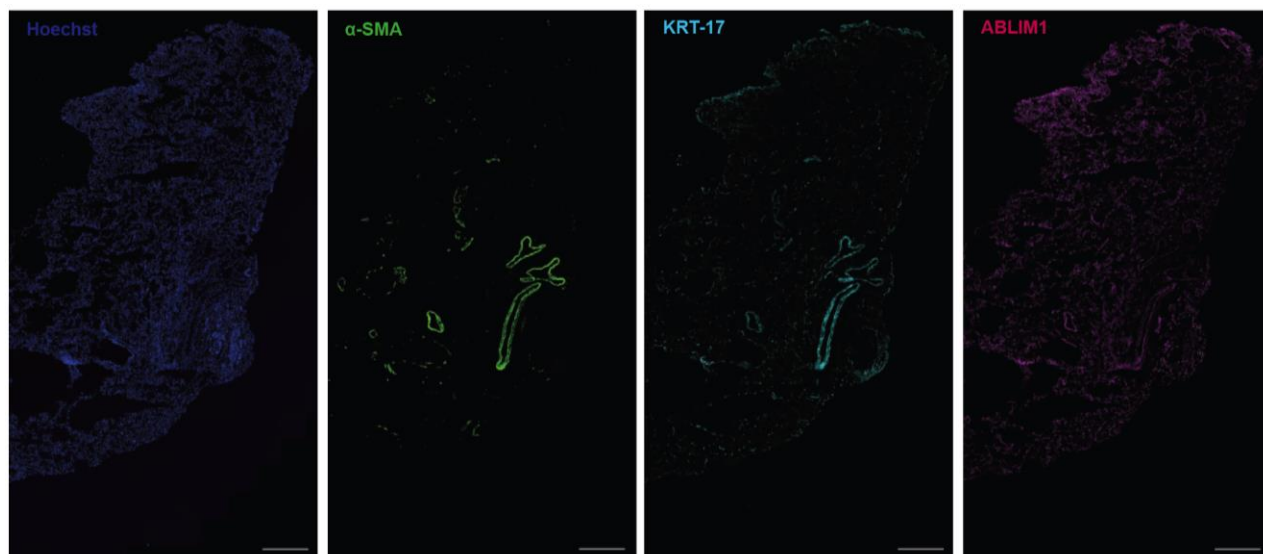


Figure S8. **Immunofluorescence analysis of ABLIM1 in control lungs.** Representative immunofluorescence staining of organ donor control lungs for Hoechst, alpha-smooth muscle actin (α -SMA), cytokeratin 17 (KRT-17), and ABLIM1. Images were taken with a 40x objective, and the scale bar is 100um.

Isoform a		1	MPAFLGLKCLGKLCSSSEKSKVTSSERTSARGSNRKRLIVEDRRVSGTSFTAHRRAITITHLLYLCPKDYCPRGRV	74
Isoform j			-----	
Epitope (n=3)			MPAFLGLKCLGKLCSSSEKSKVTSSERTSARGSNRKRLIVEDRRVSGTSF-----	
Epitope (n=1)			-----ERTSARGSNRKRLIVEDRRVSGTSFTAHRRAITITHLLYLCPKDYCPRGR-	
Isoform a		440	QDVRDRMIHRSTSQGSINSPVYSRHSYPTTTSRSPQHFH-----	
Isoform j		124	QDVRDRMIHRSTSQGSINSPVYSRHSYPTTTSRSPQHFH-----	
Epitope (n=1)			-DVRDRMIHRSTSQGSINSPVYSRHSYPTTTSRSPQHFHRPDQGGINIYRK---	
Isoform a			-----GNEPSSGRNSPLPYRPSRPLTPTYAQAPKHFHVPDQGGINIYRKPPPIYKQH	531
Isoform j		168	SPGVQRLSYLRTSSLSPTHSDSRPNPPFRHHFIPHIKGNPSSGRNSPLPYRPSRPLTPTYAQAPKHFHVPDQGGINIYRKPPPIYKQH	255
Epitope (n=5)			-PGVQRLSYLRTSSLSPTHSDSRPNPPFRHHFIPHIKGNPSSGRNSPL-----	
Epitope (n=5)			-----PTHSDSRPNPPFRHHFIPHIKGNPSSGRNSPLPYRPSRPLTPTYAQA-----	
Epitope (n=2)			-----PPFRHHFIPHIKGNPSSGRNSPLPYRPSRPLTPTYAQAPKHFHVPDQ-----	
Epitope (n=1)			-----NSPLPYRPSRPLTPTYAQAPKHFHVPDQGGINIYRKPPPIYKQH	
Isoform a		522	YRKPPPIYKQH (---)RRSSGREEDDELLRRRQLQEEQLMKLNGLGQLLILKEEMEKESRERS	632
Isoform j		246	YRKPPPIYKQHGPDMKRRSSGREEDDELLRRRQLQEEQLMKLNGLGQLLILKEEMEKESRERS	309
Epitope (n=2)			--KPPPIYKQHGPDMKRRSSGREEDDELLRRRQLQEEQLMKLNGLGQLL-----	
Epitope (n=1)			-----KRRSSGREEDDELLRRRQLQEEQLMKLNGLGQLLILKEEMEKESRERS-	
Isoform a		675	YNSYGDVSGGVRDYQTLPDGHMPAMRMDRGVSMFNMLEPKIFPYEMLMVTN	725
Isoform j		352	YNSYGDVSGGVRDYQTLPDGHMPAMRMDRGVSMFNMLEPKIFPYEMLMVTN	402
Epitope (n=1)			-NSYGDVSGGVRDYQTLPDGHMPAMRMDRGVSMFNMLEPKIFPYEMLMVT-	

Figure S9. **Immunodominant peptide epitopes on ABLIM1.** Phage-displayed library sequences (epitope sequences) that were immunoprecipitated by ILD patient plasma antibodies were aligned to ABLIM1 isoform a (NP_002304) and isoform j (NP001309817). Number of patients that had reactivity to each epitope sequence is indicated on the figure. Highlighted region indicates the proline-rich region, which is commonly represented in a total of 12 phage-immunoprecipitated sequencing hits.