

1 [Supplementary Material](#)

2 **Supplementary Table 1: Chronic condition in children and adolescents.** Chronic disease
3 assessed via questionnaires. In this table are listed all the chronic conditions reported by the
4 children and adolescents or their proxy.

Asthma
hay fever
celiac disease
lactose intolerance
allergies (other than hay fever)
neurodermitis
diabetes mellitus
inflammatory bowel disease
hypertension
arthritis
other chronic diseases potentially affecting the immune response (Neutropenia, PFAPA-Syndrome, renal failure, cystic fibrosis, bronchitis)

5
6

7 **Supplementary Table 2: Overall seroprevalence and seroprevalence split in ≥ 12 and < 12 -**
8 **year-old children and adolescents.** This table illustrates the overall seroprevalence and
9 seroprevalence divided according to age (< 12 years and ≥ 12 years) for all five testing rounds.
10 The proportion of vaccinated children and adolescents per testing round is also indicated.

	Timeframe of testing	T1 Jun/July 2020	T2 Nov/Dec 2020	T3 Mar/Apr 2021	T4 Oct/Nov 2021	T5 Jun/Jul 2022
All	Seroprevalence: Unvaccinated	3.0%	5.6%	18.4%	31.3%	95.8%

		(1.3% - 4.5%)	(3.6% - 7.6%)	(15.2% - 21.9%)	(27.5% - 35.9%)	(93.1% - 97.8%)
	Vaccinated ± infected	-	-	-	46.4% (42.6% - 51.0%)	96.9% (95.2% - 98.1%)
	% vaccinated	-	-	-	25.5%	43.4%
<12yrs	Seroprevalence:					
	Unvaccinated	3.0% (1.4% - 4.6%)	5.6% (3.5% - 7.8%)	19.7% (16.0% - 24.0%)	28.4% (24.2% - 33.2%)	95.1% (92.2% - 97.5%)
	Vaccinated ± infected	-	-	-	-	95.7% (93.4% - 97.4%)
	% vaccinated	-	-	-	0	28.0 %
≥12yrs	Seroprevalence:					
	Unvaccinated	2.9% (0.9% -4.9%)	5.6% (3.2% - 7.9%)	16.8% (13.5% - 20.1%)	40.3% (34.2% - 47.0%)	97.2% (94.7% - 98.7%)
	Vaccinated ± infected	-	-	-	69.4% (64.0% - 75.4%)	98.4% (97.3% - 99.2%)
	% vaccinated	-	-	-	51.2%	57.6%

11

12

13 **Supplementary Table 3: Anti-spike IgG MFI ratios and neutralising activity (IC50) at T5.** This

14 table provides detailed anti-spike IgG titres (MFI ratio, positive values defined by a cutoff of 6

15 or higher) and neutralising activity (measured by the half maximal inhibitory concentration

16 IC50, with positive values defined by a cutoff of 50 or higher) in children and adolescents from

17 the longitudinal cohort. We divided individuals based on their serology at T5 in Hybrid,
 18 Vaccinated and Infected.

19

N	T5 Group	Anti-spike IgG titres (MFI Ratio) Median and IQR	Anti-Wildtype neutralising activity (IC50) Median (IQR)	Anti-Delta neutralising activity (IC50) Median (IQR)	Anti-Omicron neutralising activity (IC50) Median (IQR)	% of Individuals above threshold for Anti-Wildtype (95% CI)	% of Individuals above threshold for Anti-Delta (95% CI)	% of Individuals above threshold for Anti-Omicron (95% CI)
180	Hybrid	136.2 (121.9-154.3)	591.2 (355.4-1055.2)	316.9 (189.1-574.1)	220 (147.7-382.9)	98.3 (95.2-99.4)	96.1 (92.2-98.1)	98.9 (96.0-99.7)
158	Vaccinated	127.6 (114.1-151)	312.8 (173-689.4)	158.4 (88.9-337.4)	133.2 (60.5-214.4)	96.2 (92.0-98.2)	86.7 (80.5-91.1)	81.6 (74.9-86.9)
353	Infected	54.8 (22.8-89.8)	59.2 (16.7-125.9)	42.5 (11.9-88.3)	69.5 (34.2-127.4)	54.4 (49.2-59.5)	45.6 (40.5-50.8)	64.9 (59.8-69.7)

20

21

22 **Supplementary Table 4: Anti-spike IgG MFI ratios between T4 (Nov/Dec 2021) and T5**
 23 **(Jun/Jul 2022).** This table provides the anti-spike IgG MFI ratio (median and interquartile
 24 range) shown in the boxplot (Figure 4) for all different group combinations.

N	T4 Group	T5 Group	T4: Median (IQR) MFI ratio	T5: Median (IQR) MFI ratio
38	T4 Hybrid	T5 Hybrid	107.2 (88.8-113.1)	132.8 (121.6-145.9)
60	T4 Vaccinated	T5 Hybrid	103 (80.6-119.8)	135.1 (121.6-155.3)
84	T4 Vaccinated	T5 Vaccinated	111.2 (89.3-122.6)	128.4 (118.7-155.1)
33	T4 Infected	T5 Hybrid	35.8 (24.8-48.5)	150.5 (130.4-158.4)
143	T4 Infected	T5 Infected	36.5 (24.9-50.2)	86.4 (64.2-117.8)
49	T4 Negative	T5 Hybrid	1 (1-1)	136.2 (119.1-149.2)
74	T4 Negative	T5 Vaccinated	1 (1-1)	125.4 (94.3-141.4)
210	T4 Negative	T5 Infected	1 (1-1.2)	27.9 (15.9-56.4)

25

26

27 **Supplementary Table 5: Anti-spike IgG MFI ratio converted to U/ml for Roche Elecsys anti-**
 28 **spike IgG (WHO measure) between T4 (Nov/Dec 2021) and T5 (Jun/Jul 2022).** This table
 29 provides the MFI ratio converted to U/ml for Roche Elecsys anti-spike IgG (WHO measure)
 30 shown in the boxplot (Supplementary Figure 3). We converted the MFI values to U/ml, by

31 using the Elecsys Anti-SARS-CoV2 immunoassay developed by Roche, for the purpose of
 32 interpretation. The Department of Clinical Immunology & Allergy of the University Hospital of
 33 Lausanne used population based samples to provide the conversion formula of Roche anti-
 34 spike IgG = $10^{(-0.6108069 + 2.0072882 \times \log_{10}(\text{MFI} + 1))}$.

N	T4 Group	T5 Group	T4: Median (IQR) U/ml	T5: Median (IQR) U/ml
38	T4 Hybrid	T5 Hybrid	2968.1 (2044.4-3303.3)	4542.3 (3812.9-5479.4)
60	T4 Vaccinated	T5 Hybrid	2744 (1685.8-3706.2)	4700.7 (3815.7-6212.1)
84	T4 Vaccinated	T5 Vaccinated	3192.4 (2064.5-3875.3)	4250.6 (3636.7-6190.2)
33	T4 Infected	T5 Hybrid	340.6 (167-617.7)	5833.2 (4383.5-6459.8)
143	T4 Infected	T5 Infected	353.8 (167.7-662.3)	1933.6 (1075.4-3577.5)
49	T4 Negative	T5 Hybrid	1 (1-1)	4780.6 (3659.6-5733.2)
74	T4 Negative	T5 Vaccinated	1 (1-1)	4058.9 (2303.2-5151.2)
210	T4 Negative	T5 Infected	1 (1-1.2)	209 (71.6-832.2)

35

36

37 **Supplementary Table 6: Proportion of children and adolescents with reinfection between**
 38 **T4 (Nov/Dec 2021) and T5 (Jun/Jul 2022).** This table shows the proportion of children and
 39 adolescents with first SARS-CoV-2 infection before T4 (Nov/Dec 2021) and reinfection
 40 between T4 (Nov/Dec 2021) and T5 (Jun/Jul 2022). We divided children and adolescents into
 41 unvaccinated, recent vaccination (latest vaccination between T4 and T5) and older infection
 42 (latest vaccination before T4). In these three groups we calculated the proportion of children
 43 and adolescents experiencing reinfection by looking at the presence of anti-nucleocapsid IgG
 44 as well as 25% increase and/or decrease.

	Unvaccinated N=314		Recent vaccination N=220		Older vaccination N=206	
	Anti-N IgG +	Anti-N IgG -	Anti-N IgG +	Anti-N IgG -	Anti-N IgG +	Anti-N IgG -
Anti-nucleocapsid IgG positivity						
N	231/314	31/314	57/220	100/220	58/206	53/206
≥25% titre increase	(73.6%)	(9.9%)	(25.9%)	(45.5%)	(28.2%)	(25.7%)

N between <25% titre increase & <25% titre decrease	17/314 (5.4%)	23/314 (7.3%)	23/220 (10.5%)	34/220 (15.5%)	42/206 (20.4%)	40/206 19.4%
N ≥25% titre decrease	4/314 (1.3%)	8/314 (2.5)	1/220 (0.4%)	5/220 (2.3%)	2/206 (0.9%)	11/206 (5.4%)

45

46

47 **Supplementary Table 7: Neutralising activity between T4 (Nov/Dec 2021) and T5 (Jun/Jul**

48 **2022).** This figure shows the development of neutralising antibodies against different SARS-

49 CoV-2 variants between T4 (Nov/Dec 2021) and T5 (Jun/Jul 2022). We again separated

50 participants into the four different groups according to their serology at T4 and exposure

51 status (i.e., seronegative, only infected, only vaccinated, or with hybrid immunity) and

52 evaluated neutralising activity against Wildtype, Delta, and Omicron. We calculated medians

53 (with inter quartile ranges (IQR)) and proportion of children and adolescents with neutralising

54 activity, measured by the half maximal inhibitory concentration (IC50) with positive or

55 negative results defined by a cutoff value of 50 or higher.

56

N	Variant of concern	T4 Group	T5 Group	T4: Median (IQR)	T5: Median (IQR)	T4: % of Individuals above threshold (%)	T5: % of Individuals above threshold (%)
38	Wildtype	T4 Hybrid	T5 Hybrid	913.9 (476.9-2287.4)	672.5 (339.1-1015.2)	100 (90.8-100)	100 (90.8-100)
60	Wildtype	T4 Vaccinated	T5 Hybrid	568.5 (324.4-780.8)	1082.9 (639.9-2083.3)	100 (94.0-100)	100 (94.0-100)
84	Wildtype	T4 Vaccinated	T5 Vaccinated	405.2 (254.9-569.3)	578.1 (319.1-929.3)	98.8 (93.6-99.8)	100 (95.6-100)
33	Wildtype	T4 Infected	T5 Hybrid	51.9 (34-82.2)	505.8 (372.9-687.8)	51.5 (35.2-67.5)	100 (90.0-100)

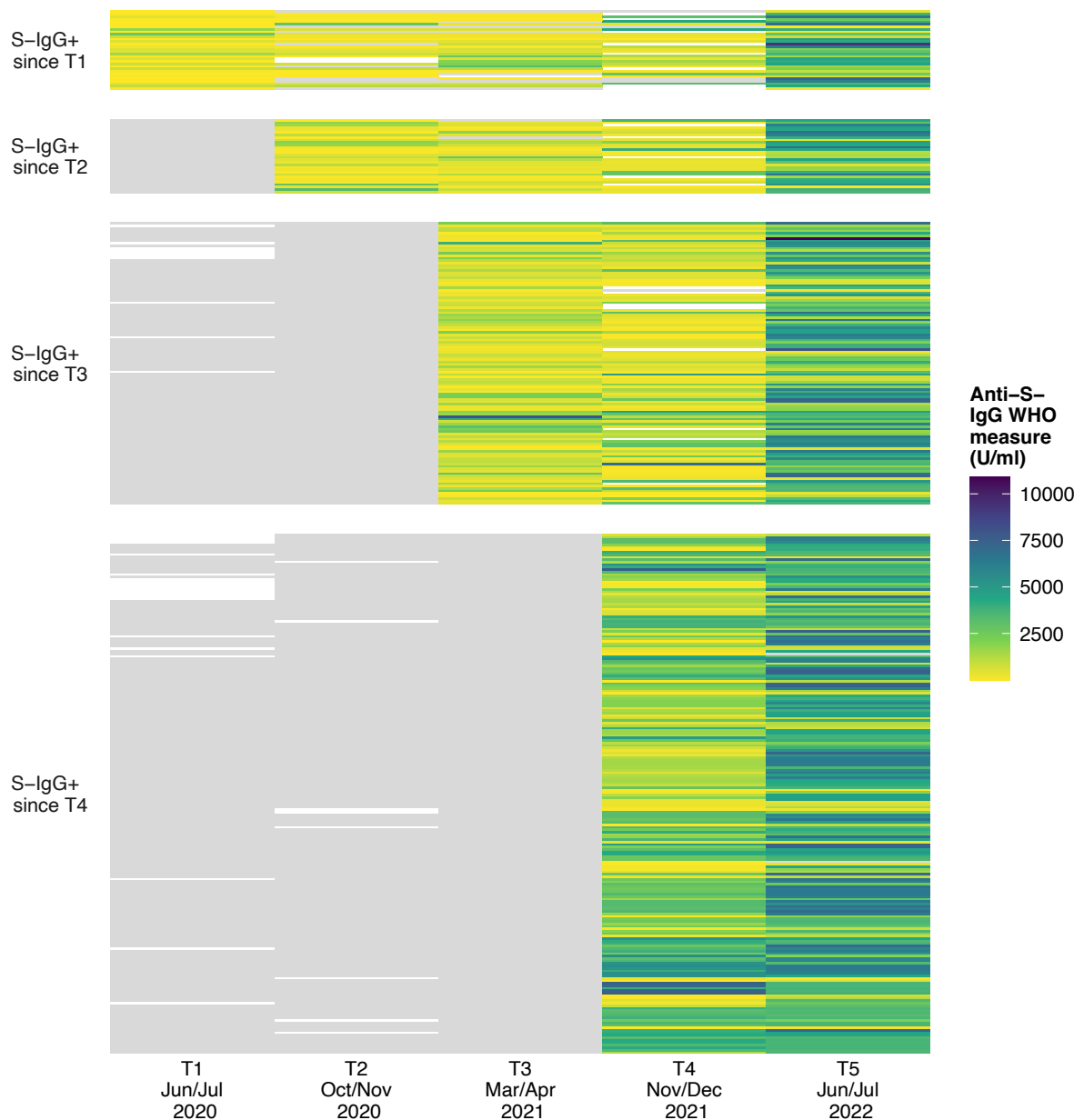
143	Wildtype	T4 Infected	T5 Infected	59.7 (35.8-89.4)	125.9 (81.6-206.3)	58 (49.8-65.8)	90.9 (85.1-94.6)
49	Wildtype	T4 Negative	T5 Hybrid	0	354 (205.4-494.1)	0 (0-7.3)	93.9 (83.5-97.9)
74	Wildtype	T4 Negative	T5 Vaccinated	0	207.3 (119-281.8)	0 (0-4.9)	91.9 (83.4-96.2)
210	Wildtype	T4 Negative	T5 Infected	0	21.5 (11.1-59.2)	0 (0-1.8)	29.5 (23.8-36.0)
38	Delta	T4 Hybrid	T5 Hybrid	395.3 (219.4-919.9)	318.6 (187.4-547.7)	97.4 (86.5-99.5)	100 (90.8-100)
60	Delta	T4 Vaccinated	T5 Hybrid	211.3 (129.2-337.5)	610.2 (377.7-1143.4)	100 (94.0-100)	100 (94.0-100)
84	Delta	T4 Vaccinated	T5 Vaccinated	170.5 (118.4-240.4)	256.9 (153-490.5)	96.4 (90.0-98.8)	94.0 (86.8-97.4)
33	Delta	T4 Infected	T5 Hybrid	31.7 (21.2-49.7)	249 (187.4-324.7)	24.2 (12.8-41.0)	100 (90.0-100)
143	Delta	T4 Infected	T5 Infected	33.9 (22-47.7)	88.3 (56.6-141.3)	23.1 (16.9-30.6)	79.7 (72.4-85.5)
49	Delta	T4 Negative	T5 Hybrid	0	189.8 (136.1-308.7)	0 (0-7.3)	85.7 (73.3-92.9)
74	Delta	T4 Negative	T5 Vaccinated	0	112.8 (55.2-150.1)	0 (0-4.9)	78.4 (67.8-86.2)
210	Delta	T4 Negative	T5 Infected	0	16 (8.3-45.8)	0 (0-1.8)	22.4 (17.3-28.5)
38	Omicron	T4 Hybrid	T5 Hybrid	191 (105.2-630.5)	203.3 (124.7-288.8)	92.1 (79.2-97.3)	100 (90.8-100)
60	Omicron	T4 Vaccinated	T5 Hybrid	95 (60.5-143.9)	421.9 (284.1-656.5)	81.7 (70.1-89.4)	100 (94.0-100)
84	Omicron	T4 Vaccinated	T5 Vaccinated	70.1 (49.8-95)	191.7 (79.5-329.9)	75 (64.8-83.0)	84.5 (75.3-90.7)
33	Omicron	T4 Infected	T5 Hybrid	0	166.2 (124.8-206.1)	0 (0-10.4)	100 (90.0-100)
143	Omicron	T4 Infected	T5 Infected	0 (0-13)	85.2 (54.2-126.8)	1.4 (0.4-5.0)	78.3 (70.9-84.3)
49	Omicron	T4 Negative	T5 Hybrid	0	176.9 (125.9-252.1)	0 (0-7.3)	95.9 (86.3-98.9)
74	Omicron	T4 Negative	T5 Vaccinated	0	89.6 (54.4-158.5)	0 (0-4.9)	78.4 (67.7-86.3)
210	Omicron	T4 Negative	T5 Infected	0	57.3 (25.1-129.5)	0 (0-1.8)	55.7 (49.0-62.3)

57

58

59

60 **Supplementary Figure 1: Heatmap for the longitudinal trajectory of MFI ratio converted to**
61 **U/ml for Roche Elecsys anti-spike IgG (WHO measure) in children and adolescents over the**
62 **entire study period.** Individual trajectories of anti-spike IgG of MFI ratio converted to U/ml for
63 Roche Elecsys anti-spike IgG (WHO measure) over time separated by first incidence of
64 seropositive result in children and adolescents (total n = 386). We excluded children and
65 adolescents who never tested seropositive throughout all five testing rounds (n= 37) and
66 children and adolescents who seroconverted between T4 (Nov/Dec 2021) and T5 (Jun/Jul
67 2022) (n= 328). We converted the MFI values to U/ml, by using the Elecsys Anti-SARS-CoV2
68 immunoassay developed by Roche, for the purpose of interpretation. The Department of
69 Clinical Immunology & Allergy of the University Hospital of Lausanne used population based
70 samples to provide the conversion formula Roche anti-spike IgG =
71 $10^{(-0.6108069 + 2.0072882 \times \log_{10}(\text{MFI} + 1))}$.



72

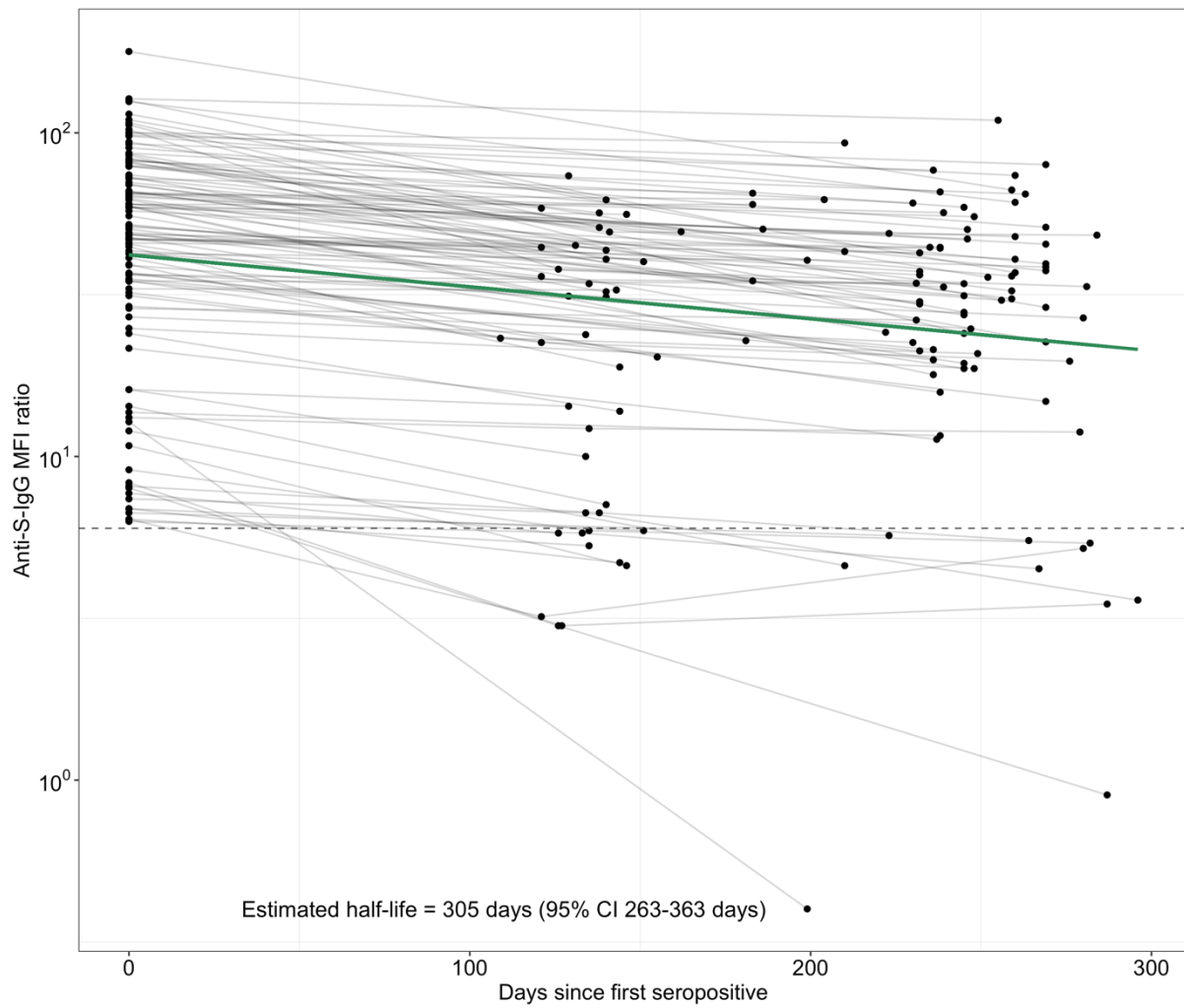
73

74 **Supplementary Figure 2: Half-life of anti-spike IgG antibodies.** For the primary analysis, we
 75 calculated the waning of anti-spike IgG antibodies in children and adolescents considering a
 76 time window of follow up of 365 days (total n= 114) **(A)**. For the sensitivity analysis we used a
 77 shorter time window of 220 days (total n= 53) **(B)**. We followed up all children and adolescents
 78 from the timepoint of seroconversion. We excluded individuals who never tested seropositive
 79 for anti-spike IgG antibody, and who had no follow-up assessment after being tested

80 seropositive and those who got vaccinated. A mixed linear model was conducted to estimate
81 the anti-spike IgG decay over time using a random intercept for participants.

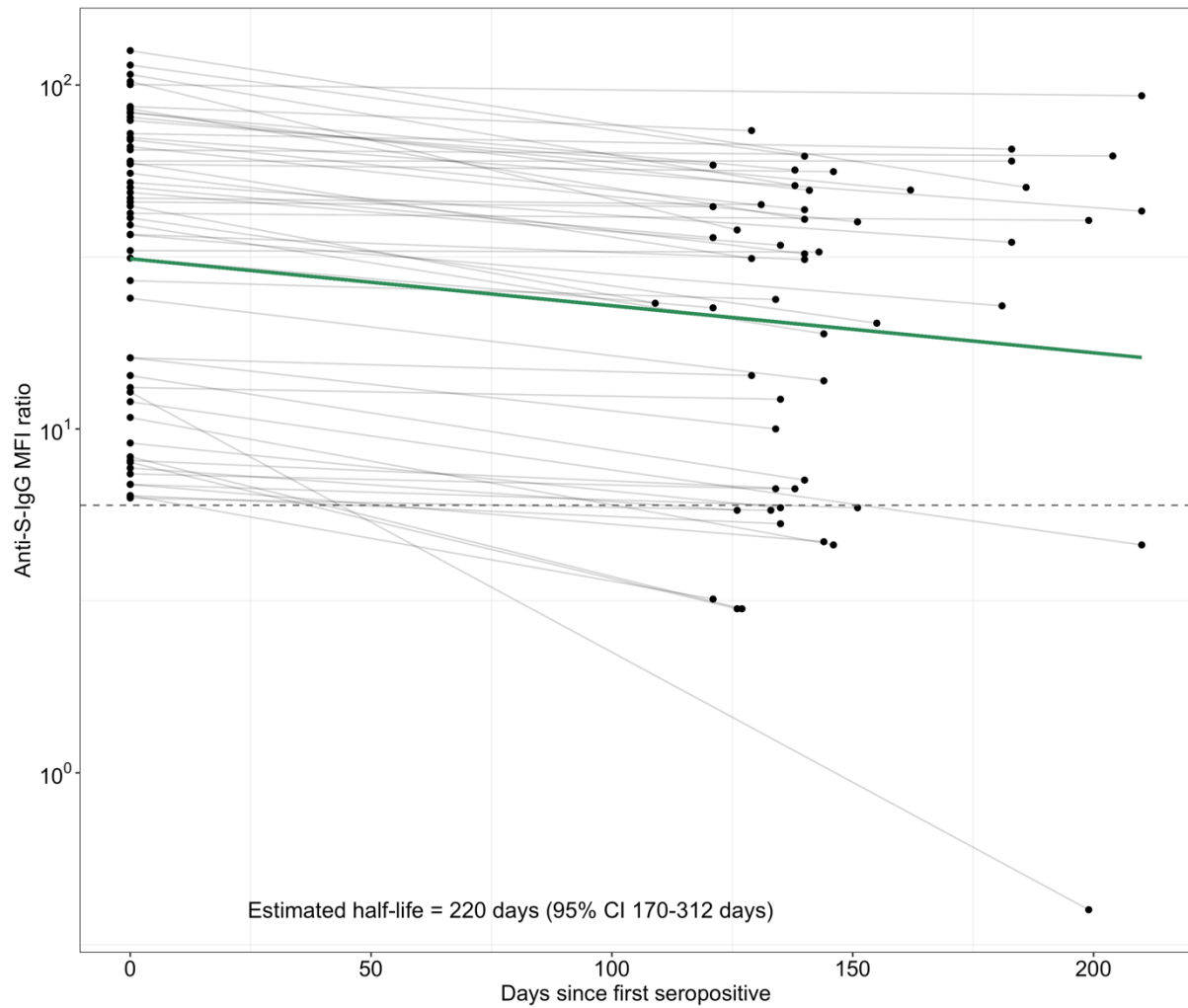
82

83 (A)



84

85 (B)



86

87

88

89 **Supplementary Figure 3: Evolution of anti-spike IgG of MFI ratio converted to U/ml for Roche**

90 **Elecsys anti-spike IgG (WHO measure) from T4 (Nov/Dec 2021) to T5 (Jun/Jul 2022).** This

91 figure shows the evolution of anti-spike IgG antibodies in groups of children and adolescents

92 separated by their serology and exposure status (i.e., seronegative, only infected, only

93 vaccinated, with hybrid immunity) at T4 (Nov/Dec 2021) and followed to T5 (Jun/Jul 2022).

94 We converted the MFI values to U/ml, by using the Elecsys Anti-SARS-CoV2 immunoassay

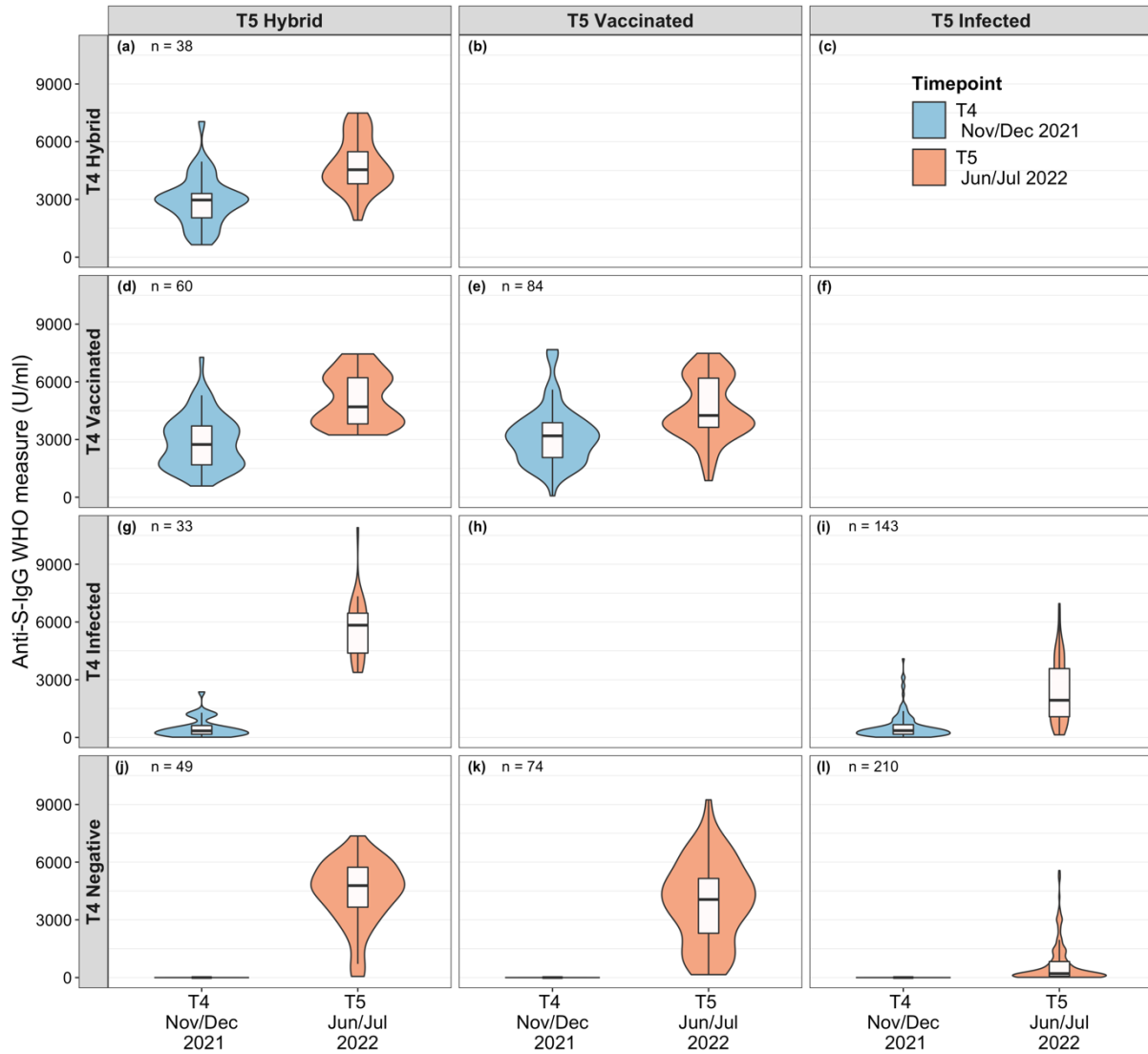
95 developed by Roche, for the purpose of interpretation. The Department of Clinical

96 Immunology & Allergy of the University Hospital of Lausanne used population based samples

97 to provide the conversion formula Roche anti-spike IgG =

98 $10^{(-0.6108069 + 2.0072882 \times \log_{10}(\text{MFI} + 1))}$.

99



100

101

102