

Supplementary Material

Genome-wide Association Identifies Novel Etiological Insights Associated with Parkinson's Disease in African and African Admixed Populations

Mie Rizig PhD^{*1,2}, Sara Bandres-Ciga PhD^{*3}, Mary B Makarios BSc^{*2,4}, Oluwadamilola Ojo MD⁵, Peter Wild Crea, BSc^{3,4}, Oladunni Abiodun, FWACP⁶, Kristin S Levine, MS^{3,7}, Sani Abubakar, MBBS⁸, Charles Achoru, MBBS⁹, Dan Vitale, MS⁷, Olaleye Adeniji, MBBS¹⁰, Osigwe Agabi, MBBS⁵, Mathew J Koretsky, BSc³, Uchechi Agulanna, MBBS¹¹, Deborah A. Hall, MD, PhD¹², Rufus Akinyemi, PhD¹³, Tao Xie, MD, PhD¹⁴, Mohammed Ali, MBBS¹⁵, Ejaz A. Shamim, MD^{16,17,18}, Ifeyinwa Ani-Osheku, FMCP¹⁹, Mahesh Padmanaban, MD¹⁴, Owotemu Arigbodi, MBBS²⁰, David G Standaert, MD, PhD²¹, Abiodun Bello, FWACP²², Marissa Dean, MD²¹, Cyril Erameh, MBBS²³, Inas Elsayed, PhD²⁴, Temitope Farombi, MBBS²⁵, Olaitan Okunoye, PhD¹, Michael Fawale, MSc²⁶, Kimberley J Billingsley, PhD^{3,4}, Frank Imarhiagbe, MBCHB²⁷, Pilar Alvarez Jerez, BSc^{1,3}, Emmanuel Iwuozo, FMCP²⁸, Breeana Baker, BSc³, Morenikeji Komolafe, MBBS²⁶, Laksh Malik, MFS³, Paul Nwani, MBBS²⁹, Kensuke Daida, MD^{3,4}, Ernest Nwazor, FMCP³⁰, Abigail Miano-Burkhardt, BSc^{3,4}, Yakub Nyandaiti, MBBS³¹, Zih-Hua Fang, PhD³², Yahaya Obiabo, MBCHB³³, Jillian H. Kluss, PhD⁴, Olanike Odeniyi, MBBS³⁴, Dena Hernandez, PhD⁴, Francis Odiase, MBBS²⁷, Nahid Tayebi, PhD³⁵, Francis Ojini, MSc⁵, Ellen Sidranksy, MD³⁵, Gerald Onwuegbuzie, MBBS³⁶, Andrea M. D'Souza, BSc³⁵, Godwin Osaigbovo, MBBS⁹, Bahafta Berhe³⁵, Nosakhare Osemwegie, MBBS³⁷, Xylena Reed, PhD³, Olajumoke Oshinaike, FWACP³⁸, Hampton Leonard, MS^{3,7}, Folajimi Otubogun, MBCHB³⁹, Chelsea X Alvarado, MS^{3,7}, Shyngle Oyakhire, MBBS⁴⁰, Simon Ozomma, FMCP⁴¹, Sarah Samuel, MBBS³¹, Funmilola Taiwo, MBCHB²⁵, Kolawole Wahab, MD^{22,42}, Yusuf Zubair, MSc⁴⁰, Hirotaka Iwaki, MD^{3,7}, Jonggeol Jeffrey Kim, BA^{3,4}, Huw R Morris, PHD FRCP^{1,2}, John Hardy, PhD¹, Mike Nalls, PhD⁷, Karl Heilbron, PhD⁴³, Lucy Norcliffe-Kaufmann, PhD⁴³, Nigeria Parkinson Disease Research Network, International Parkinson's Disease Genomics Consortium - Africa (IPDGC Africa), Black and African American Connections to Parkinson's Disease (BLAAC PD) Study Group, the 23andMe Research Team, Cornelis Blauwendraat, PhD^{3,4}, Henry Houlden, MD¹, Andrew Singleton, PhD^{#,CA,3,4}, Njideka Okubadejo, MD^{#,CA,5} on behalf of the Global Parkinson's Genetics Program.

*joint first

#joint last

^{CA}Corresponding

Table of Contents

Figures

Supplementary Figure 1. Age distributions of cohorts under study	2
Supplementary Figure 2. African Admixed cohort with 1000 Genome populations	3
Supplementary Figure 3. African cohort with 1000 Genome populations	4
Supplementary Figure 4. African Parkinson's disease risk GWAS.....	5
Supplementary Figure 5. African Admixed Parkinson's disease risk GWAS	6
Supplementary Figure 6. Forest plot displaying effect size estimates for <i>GBA1</i> - rs3115534 in the African, African admixed and overall meta-analysis datasets.	7
Supplementary Figure 7. <i>GBA1</i> - rs3115534 genotypes versus age at Parkinson's disease onset	8
Supplementary Figure 8. Beta-beta plot comparison of Europeans for PD <i>GBA1</i> risk locus identified in African and African Admixed.....	9
Supplementary Figure 9. Haplotype frequencies spanning the <i>GBA1</i> -rs3115534 variant per African and African admixed subpopulation.....	10
Supplementary Figure 10. <i>GBAP1</i> Duplication and <i>MTX1</i> , <i>MTX1P1</i> Fusion vs Long Read Sequencing	11
Supplementary Figure 11. GCcase activity analyses performed on <i>GBA1</i> - rs3115534-GG, rs3115534-GT, and rs3115534-TT carriers.....	12
Supplementary Figure 12. GCcase activity analyses performed on <i>GBA1</i> - rs3115534-GG, rs3115534-GT, and rs3115534-TT carriers.....	13

Tables (see Supplementary_Tables.xlsx)

Supplementary Table 1. Genome-wide significant SNPs identified in the African only GWAS meta-analysis..... ST1

Supplementary Table 2. Genome-wide significant SNPs identified in the African and African Admixed GWAS meta-analysis..... ST2

Supplementary Table 3. Allele frequencies for *GBA1* - *rs3115534* in African and African admixed subpopulations..... ST3

Supplementary Table 4. Meta-GWAS fine-mapping analyses ST4

Supplementary Table 5. Genome-wide replication assessment of known PD risk loci. ST5

Supplementary Table 6. Long-Read Whole Genome Sequencing statistics ST6

Supplementary Table 7. The 23andMe Reference Panel Information ST7

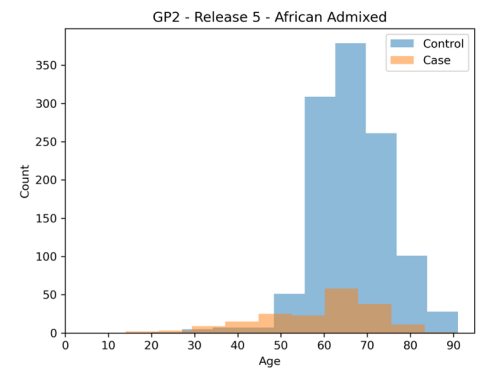
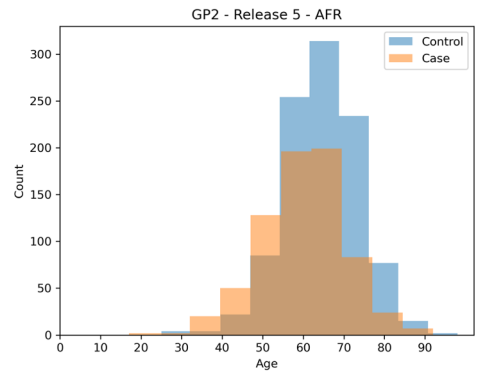
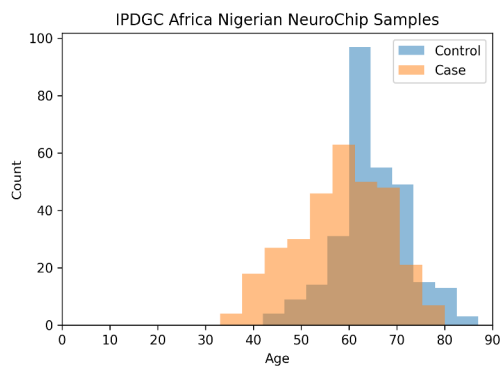
Methods

Global Parkinson’s Genetics Program (GP2) ancestry prediction.....14

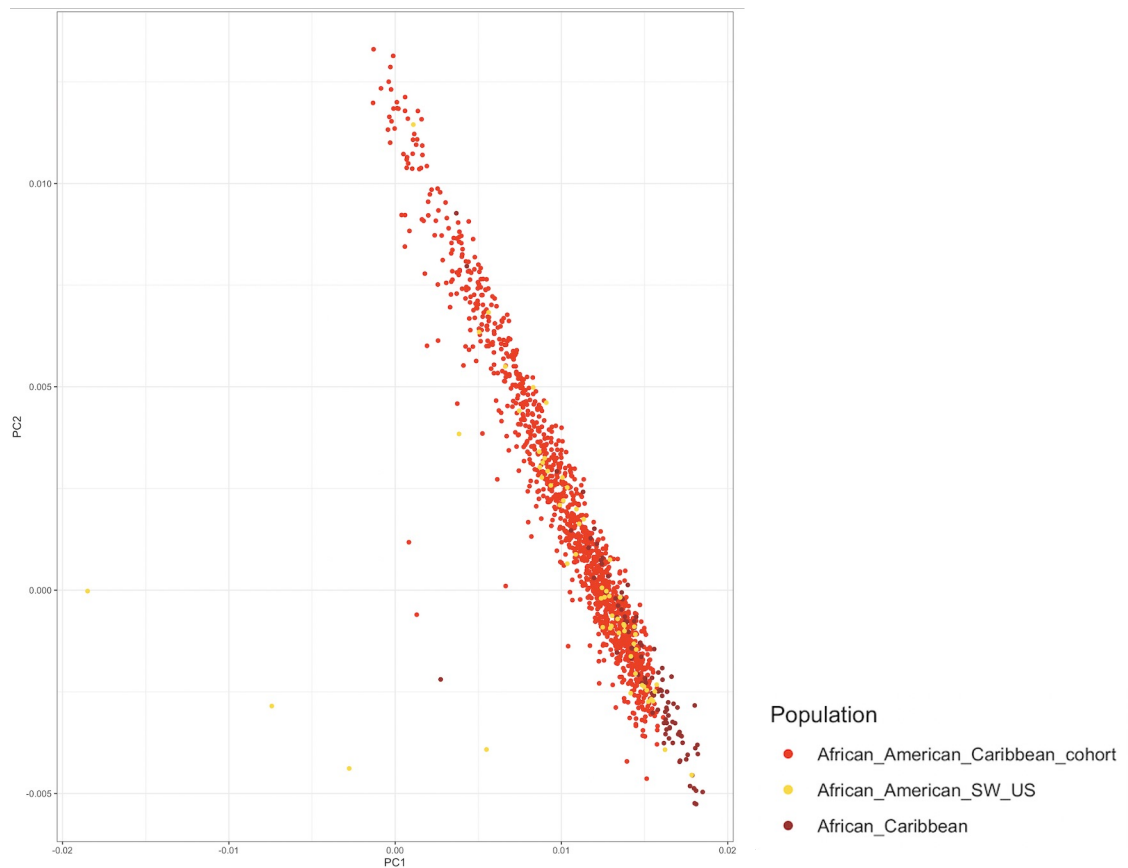
23andMe data generation and processing15

Short-read Whole Genome Sequencing.....17

Consortia Members.....19



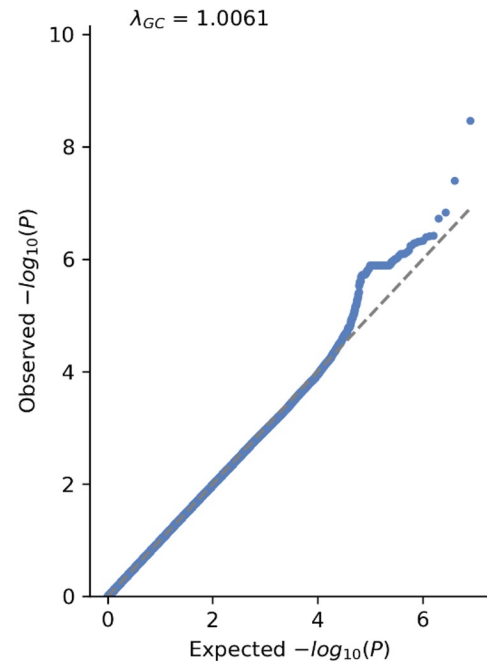
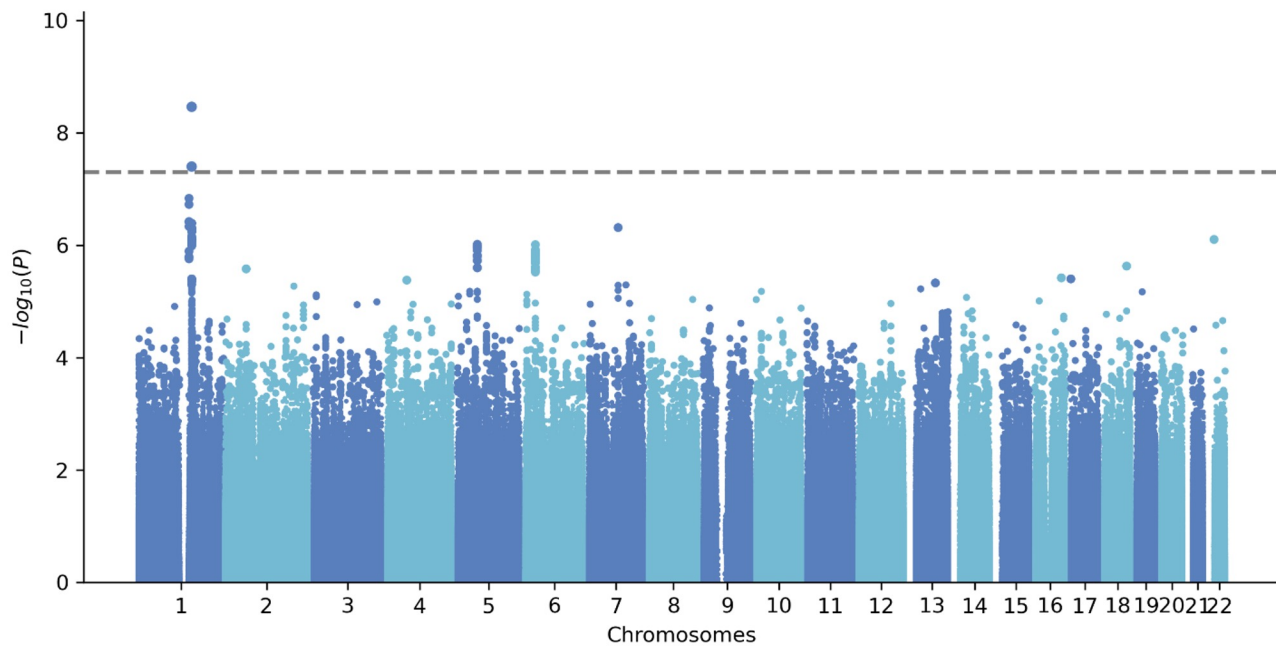
Supplementary Figure 1 | Age distributions of cohorts under study



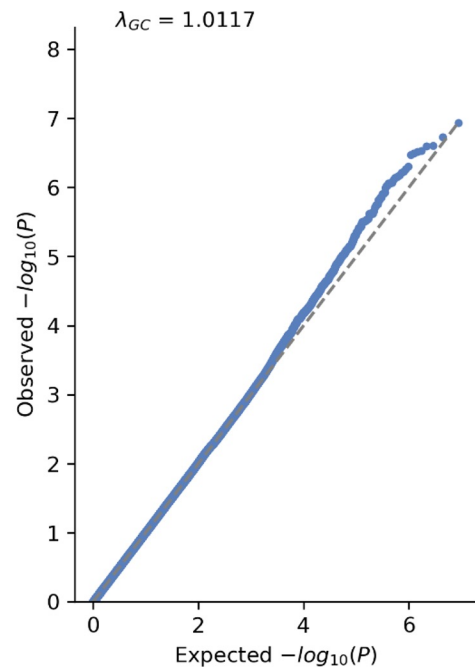
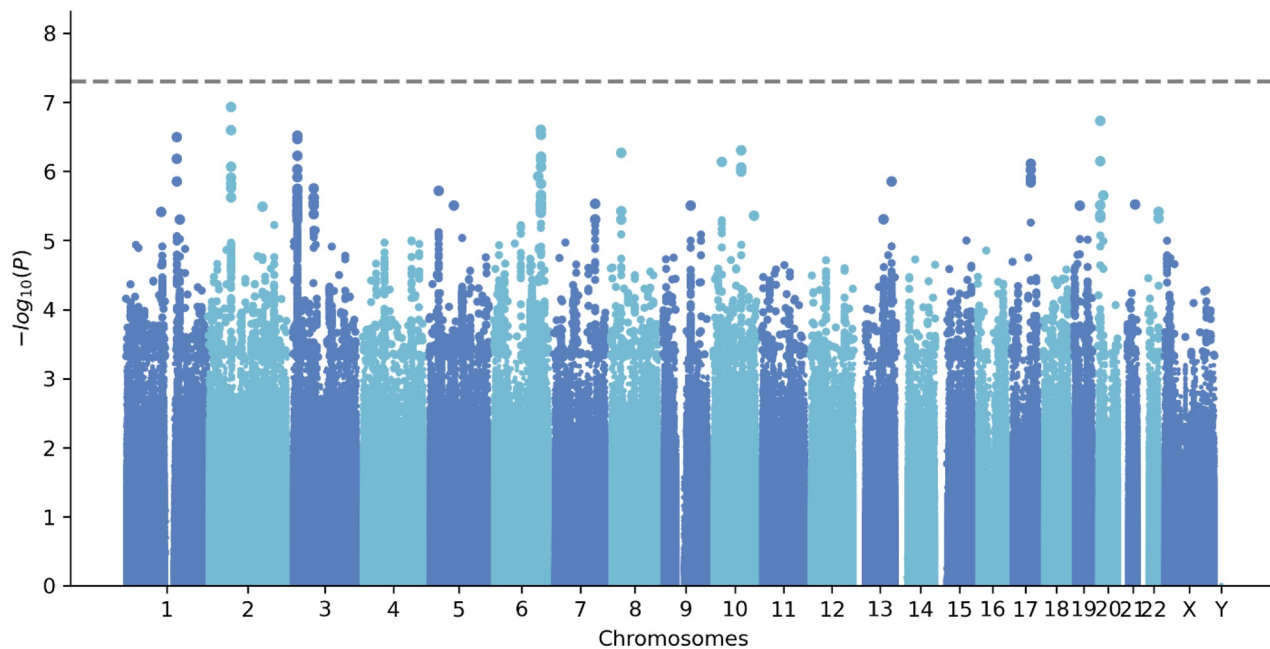
Supplementary Figure 2 | African Admixed cohort with 1000 Genome populations



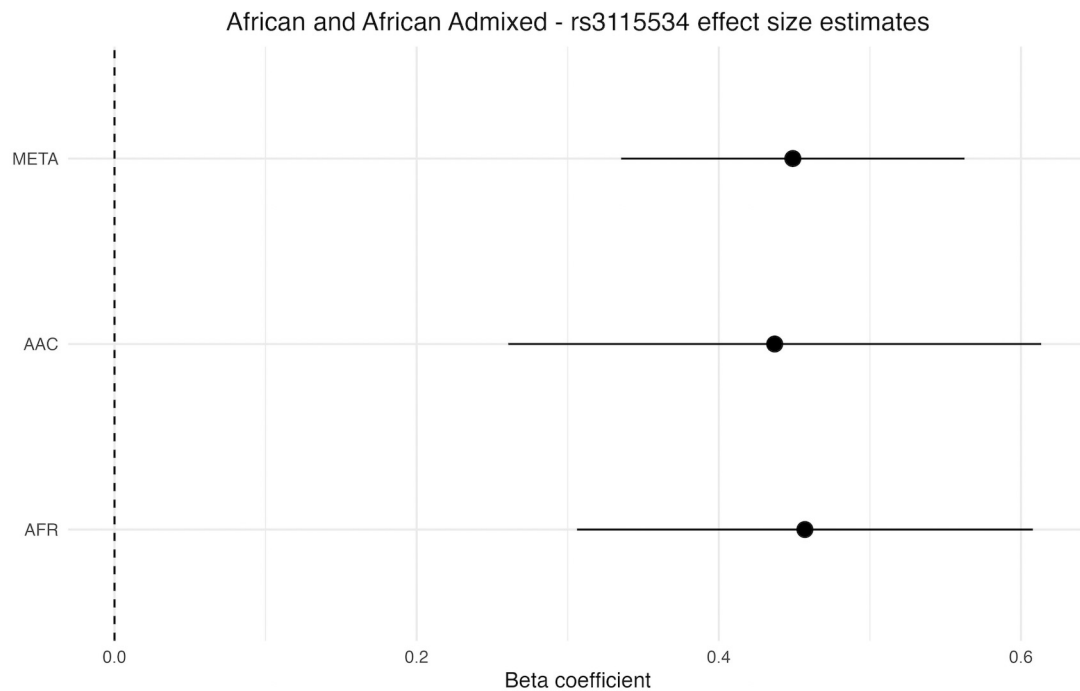
Supplementary Figure 3 | African cohort with 1000 Genome populations



Supplementary Figure 4 | African Parkinson's disease risk GWAS



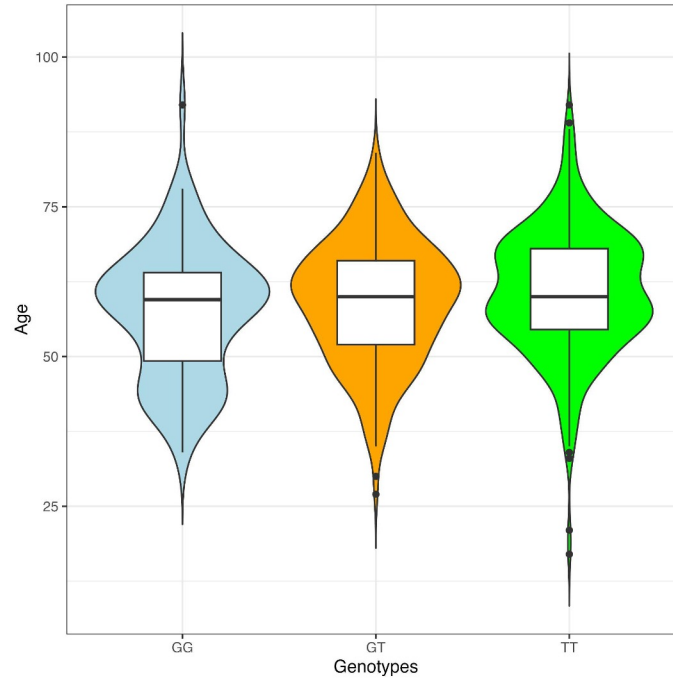
Supplementary Figure 5 | African Admixed Parkinson's disease risk GWAS



COHORT	BETA	SE	L95	U95	P
AAC	0.437	0.09	0.2606	0.6134	1.40E-06
AFR	0.457	0.077	0.30608	0.60792	3.44E-09
META	0.449	0.058	0.33532	0.56268	2.40E-14

Supplementary Figure 6 | Forest plot displaying effect size estimates for *GBA* - rs3115534 in the African, African admixed and overall meta-analysis datasets.

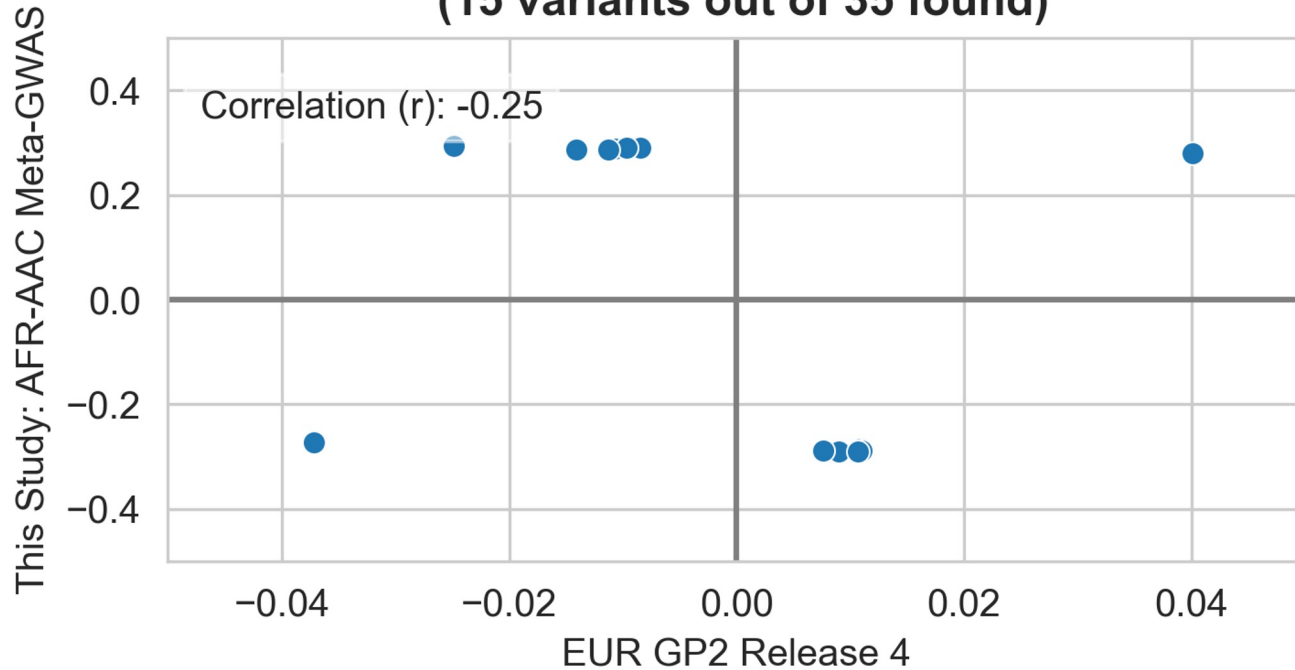
The circle denotes the beta coefficient for *GBA* - rs3115534, with the horizontal lines indicating the 95% confidence intervals.



Supplementary Figure 7 | *GBA1* - rs3115534 Genotypes versus age at Parkinson's disease onset

rs3115534-GG versus age at onset; BETA = -1.96, SE = -0.64, P=0.002; rs3115534-GT versus age at onset; BETA = -2.28, SE = 0.85, P=0.007.

Beta-Beta Plot: European vs AFR-AAC Meta-GWAS (15 variants out of 35 found)



Supplementary Figure 8 | Beta-beta plot comparison of Europeans for PD *GBA1* risk locus identified in African and African Admixed

Esan in Nigeria

RS Number	Position (GRCh37)	Allele Frequencies	Haplotypes	
rs3115534	chr1:155205669	T=0.697, G=0.303	T	G
		Haplotype Count	138	60
		Haplotype Frequency	0.697	0.303

Yoruba in Ibadan

RS Number	Position (GRCh37)	Allele Frequencies	Haplotypes	
rs3115534	chr1:155205669	T=0.718, G=0.282	T	G
		Haplotype Count	155	61
		Haplotype Frequency	0.7176	0.2824

Luhya in Webuye, Kenya

RS Number	Position (GRCh37)	Allele Frequencies	Haplotypes	
rs3115534	chr1:155205669	T=0.823, G=0.177	T	G
		Haplotype Count	163	35
		Haplotype Frequency	0.8232	0.1768

Gambian in Western Division

RS Number	Position (GRCh37)	Allele Frequencies	Haplotypes	
rs3115534	chr1:155205669	T=0.827, G=0.173	T	G
		Haplotype Count	187	39
		Haplotype Frequency	0.8274	0.1726

Mende in Sierra Leone

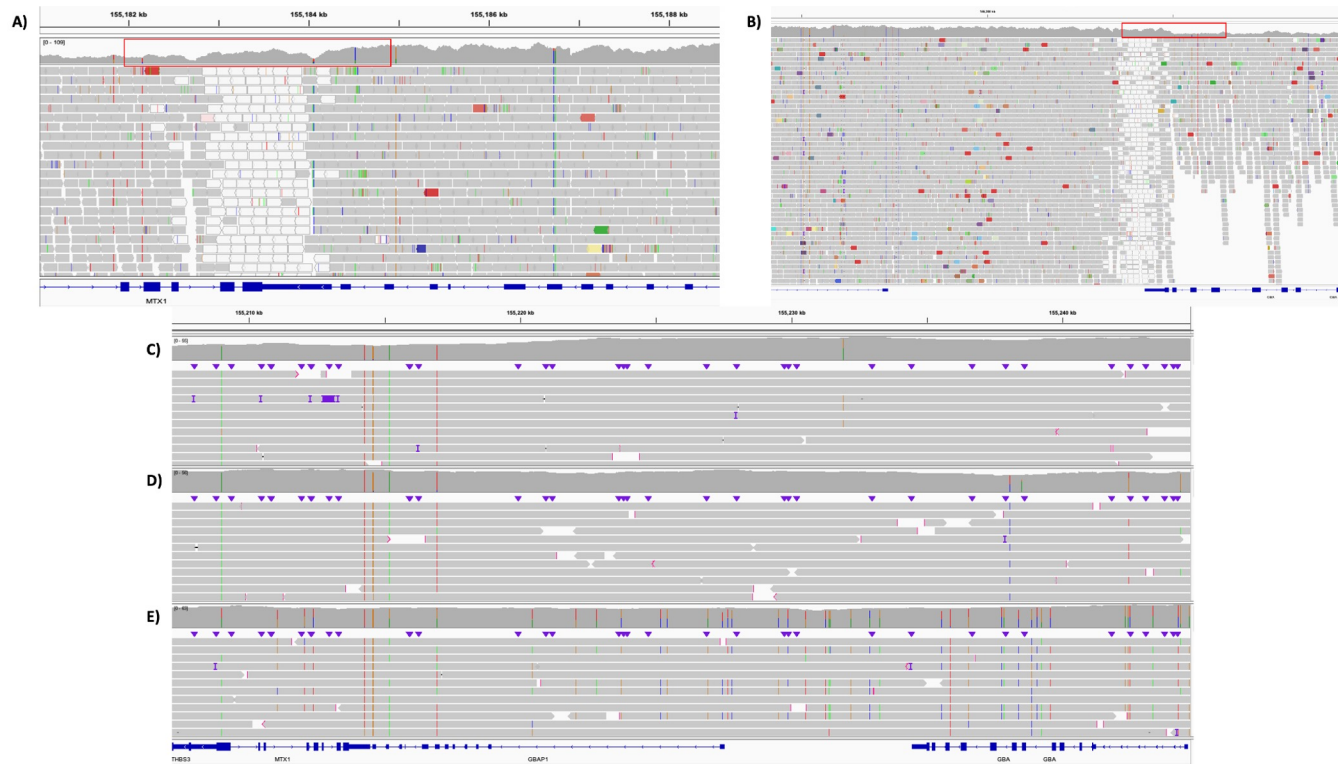
RS Number	Position (GRCh37)	Allele Frequencies	Haplotypes	
rs3115534	chr1:155205669	T=0.829, G=0.171	T	G
		Haplotype Count	141	29
		Haplotype Frequency	0.8294	0.1706

African Ancestry in Southwest USA

RS Number	Position (GRCh37)	Allele Frequencies	Haplotypes	
rs3115534	chr1:155205669	T=0.885, G=0.115	T	G
		Haplotype Count	108	14
		Haplotype Frequency	0.8852	0.1148

African – Caribbean Black

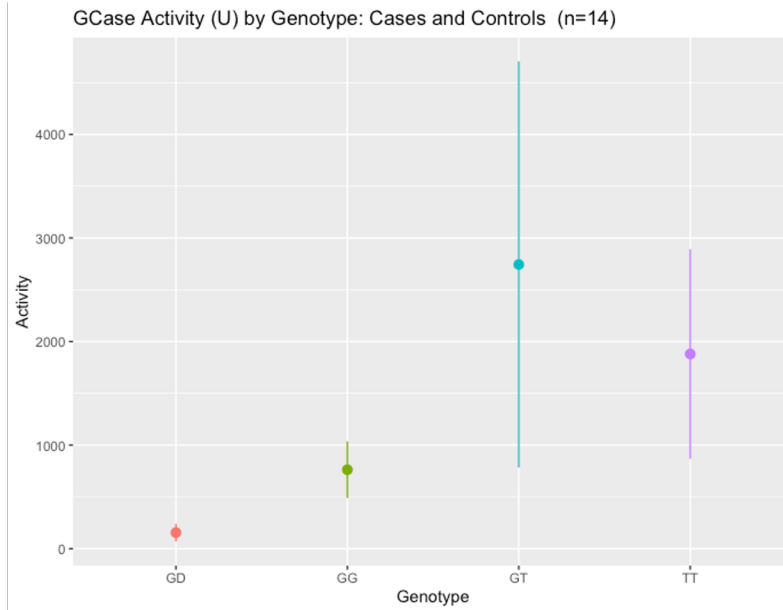
RS Number	Position (GRCh37)	Allele Frequencies	Haplotypes	
rs3115534	chr1:155205669	T=0.802, G=0.198	T	G
		Haplotype Count	154	38
		Haplotype Frequency	0.8021	0.1979



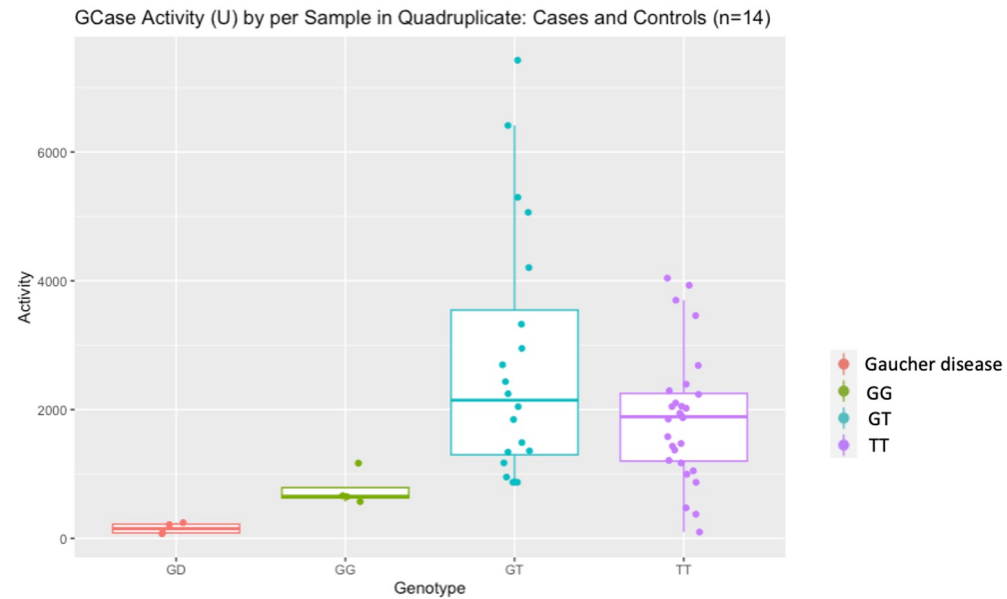
Supplementary Figure 10 | *GBAP1* Duplication and *MTX1*, *MTX1P1* Fusion vs Long Read Sequencing

In 2000, Tayebi and colleagues identified a novel recombination occurring more frequently in African American patients and resulting in a duplication of glucosylceramidase beta pseudogene 1 (*GBAP1*) and fusion of metaxin (*MTX1*) and its pseudogene (*MTX1P1*) (PMID: 11129343, PMID: 11241475). Dr. Ellen Sidransky and Dr. Nahid Tayebi generously provided whole genome sequencing data (A,B) for a sample containing this recombination which was visualized on Broad Institute Integrative Genomics Viewer (2.15.4). We generated long read sequencing data for five rs3115534-GG carriers (5 PD cases), two rs3115534-GT carriers (2 PD cases), and 6 rs3115534-TT carriers (2 PD case; 4 PD controls). A handful of these samples are shown above for reference; C) rs3115534-GG (PD case), D) rs3115534-GG (PD case), E) rs3115534-TT (PD case). The long read sequencing data we generated was compared to the recombination found by Tayebi and colleagues. Coverage changes in A and B are highlighted in red and indicate the presence of a recombination. Our long read sequencing data failed to reveal any structural variants in this region.

GCCase Activity (U) by Genotype Average (All)



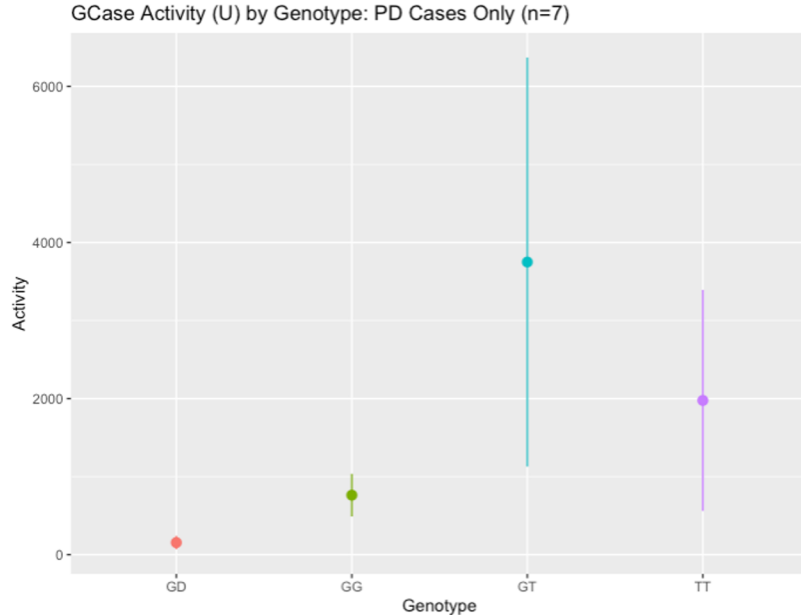
GCCase Activity (U) per Sample by Genotype (All)



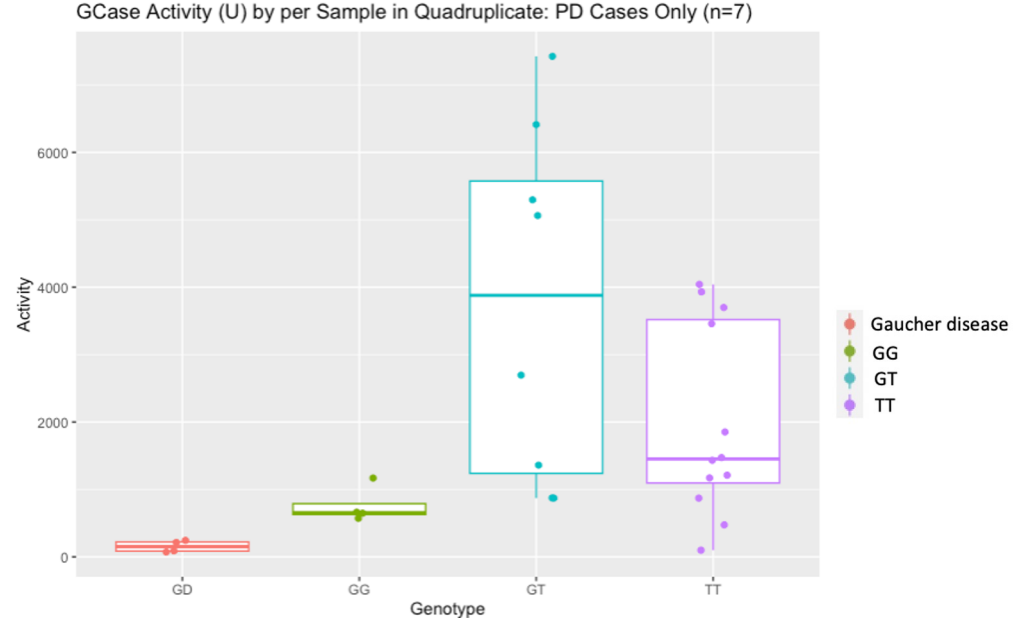
Supplementary Figure 11 | GCCase activity analyses performed on *GBA1* - rs3115534-GG, rs3115534-GT, and rs3115534-TT carriers

A fluorometric 4-MU assay was used to measure GCCase activity in 14 lymphoblastoid cell lines, including a type I Gaucher disease (GD) patient as a positive control. **A)** Samples were aggregated by rs3115534 genotype and average activity. Values are represented by mean and standard deviation. **B)** All 14 samples were run in quadruplicate. Samples were screened for known *GBA1* pathogenic mutations that could bias these estimates. A total of two carriers (one heterozygous for *GBA1* p.I320S and one heterozygous for *GBA1* p.T75del) were removed from further analyses.

GCase Activity (U) by Genotype Average (PD Only)



GCase Activity (U) by Genotype per Sample (PD Only)



Supplementary Figure 12 | GCase activity analyses performed on *GBA1* - rs3115534-GG, rs3115534-GT, and rs3115534-TT carriers

Samples with Parkinson's disease were pulled from the 14 samples shown in Supplementary Figure 11, including a type I Gaucher disease (GD) patient as a positive control. **A**) A total of 9 samples with Parkinson's disease were aggregated by rs3115534 genotype and average activity. Values are represented by mean and standard deviation. **B**) All 9 samples with Parkinson's were run in quadruplicate (Welch Two Sample t-test: GG versus GT; $t = -3.189$, $df = 7.3002$, $p\text{-value} = 0.01446$; GG versus TT; $t = -2.8158$, $df = 13.003$, $p\text{-value} = 0.01458$; GT versus TT; $t = 1.7509$, $df = 9.7545$, $p\text{-value} = 0.1113$). A total of two carriers (one heterozygous for *GBA1* p.I320S and one heterozygous for *GBA1* p.T75del) were removed from further analyses.

Methods

GP2 ancestry Prediction

Raw genotype data was passed through an ancestry prediction and pruning machine learning method as a part of the GenoTools pipeline (<https://github.com/GP2code/GenoTools>), elaborated on elsewhere²³. In brief, ancestry was defined using reference panels from the 1000 Genomes Project²⁴, Human Genome Diversity Project²⁵, and an Ashkenazi Jewish population dataset²⁶. In total, the number of SNPs used in ancestry estimation was 39,302 for samples genotyped on the NeuroBooster array and 24,404 for samples genotyped on the NeuroChip array. Ancestry estimates were carried out using a uniform protocol across all samples. A panel composed of 4008 samples from 1000 Genomes Project and the Gene Expression Omnibus (GEO) database were used (www.ncbi.nlm.nih.gov/geo (accession no. GSE23636)) to define ancestry reference populations. The reference panel was then reduced to exclude palindromic SNPs (AT or TA or GC or CG). SNPs in the reference panel were further filtered to exclude variants with minor allele frequency (MAF) < 0.05, genotyping call rate < 0.99, and HWE $P < 1E-4$. Variants overlapping between the reference panel SNP set and the samples of interest were then extracted. Any missing genotypes were imputed using the mean of that particular variant in the reference panel.

The reference panel samples were split into an 80/20 train/test set and then principal components (PCs) were fit to and transformed via UMAP to represent global genetic population substructure and stochastic variation. A classifier was then trained on these UMAP transformations of the PCs (linear support vector). Based on the test data from the reference panel and at 5-fold cross validation, ancestries were predicted consistently with balanced accuracies greater than 0.95. These classifier models were then applied to GP2 and IPDGC data to generate ancestry estimates for all samples in the dataset. Samples predicted to have African or African admixed ancestry were then included in this meta-analysis. African admixed and African labels were combined into a single category and ADMIXTURE (v1.3.0; https://dalexander.github.io/admixture/binaries/admixture_linux-1.3.0.tar.gz) was run using the `--supervised` functionality to further divide these two categories where African is assigned if African admixture is $\geq 90\%$, and African admixed is assigned if African admixture is $< 90\%$. For details of the cloud-based and scalable genotype calling, quality control and ancestry estimation pipeline, please see the GenoTools github repository (<https://github.com/GP2code/GenoTools>). Results from the respective GWA studies were annotated using ANNOVAR v2020-06-08 33. Samples clustering within African and African admixed ancestries were represented with 1000 Genome populations for visualization purposes (Supplementary Figures 2 and 3).

For the 23andMe dataset, an ancestry composition algorithm was applied by comparing 23andMe genome-wide content with an in-house customer reference panel composed of 14,393 individuals. Prior to this step, related individuals as well as individuals whose genetic ancestry did not match up with their survey answers were removed. A total of 45 ancestry composition populations were generated by performing principal component analysis using publicly available data from the African Genetics Project,

the NIH-funded genetic health resource for African Americans, the Human Genome Diversity Project, HapMap, and the 1000 Genomes project, among others.

23andMe data generation and processing

23andMe genotyping

Participants were genotyped on one of five genotyping platforms. The v1 and v2 platforms were based on the Illumina HumanHap550+ BeadChip, including about 25,000 custom variants selected by 23andMe, with a total of about 560,000 SNPs. The v3 platform was based on the Illumina OmniExpress+ BeadChip, with custom content to improve the overlap with our v2 array, with a total of about 950,000 variants. The v4 platform was a fully customized array, including a lower redundancy subset of v2 and v3 variants with additional coverage of lower-frequency coding variation, and about 570,000 variants. The v5 platform, in current use, is an Illumina Infinium Global Screening Array (~640,000 variants) supplemented with ~50,000 variants of custom content. This array was specifically designed to better capture global worldwide genetic diversity and to help standardize the platform for genetic research. Samples that failed to reach 98.5% call rate were re-genotyped. Participants whose analyses failed repeatedly were re-contacted by 23andMe customer service to provide additional samples. A total of 1,522,458 variants were genotyped across the five genotyping platforms.

23andMe ancestry classifier

A detailed description of 23andMe ancestry classifier can be found here (<https://www.23andme.com/ancestry-composition-guide/>). Briefly, the 23andMe ancestry classifier algorithm determines participant ancestries through an analysis of local ancestry³⁰. It first partitions phased genotyped data into short windows of about 300 SNPs. Within each window, we use a support vector machine (SVM) to classify individual haplotypes into one of 45 worldwide reference populations. The SVM classifications are then fed into a hidden Markov model (HMM) that accounts for switch errors and incorrect assignments, and gives probabilities for each reference population in each window. Finally, we used simulated admixed individuals to recalibrate the HMM probabilities so that the reported assignments are consistent with the simulated admixture proportions. Each of the 45 reference populations were assigned to one of six higher-level populations: African American, East Asian, European, Latin American, and South Asian. The percentage of an individual's ancestry derived from each of these six higher-level populations was calculated by summing HMM probabilities for all reference populations belonging to a given higher-level population. African Americans and Latin Americans are admixed with broadly varying contributions from Europe, Africa, and the Americas. Therefore, no single threshold of genome-wide ancestry will be able to effectively discriminate African Americans and Latin Americans. However, the distributions of the length of segments of European, African and American ancestry are very different between African Americans and Latin Americans because of distinct admixture timing between the three ancestral populations in the two ethnic groups. Therefore, we trained a logistic classifier that takes one customer's length histogram of segments of African, European and American ancestry, and predicts whether the customer is likely African American or Latin American.

23andMe phasing

We built a high-quality phasing panel by selecting 200K African American participants with high quality genotyping (missingness < 5%). Variant QC statistics were computed independently for each genotyping platform, and the following criteria were used to select high quality variants:

- SNPs only (indels are excluded),
- Minor allele frequency (MAF) \geq 0.1%,
- Missingness per variant < 5%,
- Correlation with sequence data > 0.9,
- MAF consistent with gnomAD (<https://gnomad.broadinstitute.org/>) ($|Z| < 100$),
- Male heterozygosity tests for chromosome X non-PAR region.

All participant genotyping data were phased with SHAPEIT4 (<https://odelaneau.github.io/shapeit4/>) using genotyping platform specific phasing panels.

23andMe imputation panels

Imputation was performed using two independent reference panels: the publicly available Human Reference Consortium (HRC) panel and the 23andMe reference panel, which was built by 23andMe using internal and external cohorts.

HRC reference panel: The publicly available HRC data were downloaded from the European Genome-Phenome Archive at the European Bioinformatics Institute (accession EGAD00001002729). The HRC data includes 27,165 samples. Variants were liftovered to hg38 and excluded if their new positions were on a different chromosome. Variants were then re-phased using SHAPEIT4. Finally, singletons were excluded. The final HRC reference panel included 27,165 samples and 39,057,040 SNPs (no indels).

23andMe reference panel: We selected 12,217 samples from multiple internal and external WGS datasets. The cohort composition is included in **Supplementary Table 7**.

23andMe imputation

Phased genotyping data were used to impute 85M variants from the overall imputation panel for all participants using Beagle 531. Imputation was performed separately for the three sets of variants (HRC only, 23andMe only, and intersect), using three distinct sets of reference samples. Variants found in HRC only were imputed using the HRC reference samples. Variants found in 23andMe only were imputed using the 23andMe reference samples. Variants found in both HRC and 23andMe were imputed using all samples from both HRC and 23andMe. Imputation was performed independently for each 23andMe genotyping platform.

Removing relatives in the 23andMe dataset

A maximal set of unrelated individuals is chosen for each GWAS analysis using a segmental identity-by-descent (IBD) estimation algorithm³². Participants are defined as related if they shared more than 700 cM IBD, including regions where the two individuals share either one or both genomic segments IBD. This level of relatedness (roughly 20% of the genome) corresponds approximately to the minimal expected sharing between first cousins in an outbred population. When selecting individuals for case/control phenotype analyses, the selection process is designed to maximize case sample size by preferentially retaining cases over controls. Specifically, if both an individual case and an individual

control are found to be related, then the case is retained in the analysis.

23andMe GWAS

We computed association test results for the genotyped and the imputed SNPs using logistic regression assuming additive allelic effects. For tests using imputed data, we used the imputed dosages rather than best-guess genotypes. As standard, we include covariates for age, sex, the top five principal components to account for residual population structure, and indicators for genotype platforms to account for genotype batch effects. The association test P value we report is computed using a likelihood ratio test. Results for the X chromosome are computed similarly, with male genotypes coded as if they were homozygous diploid for the observed allele.

23andMe GWAS QC

For QC of genotyped GWAS results, we flagged SNPs that were only genotyped on our “v1” and/or “v2” platforms due to small sample size, and SNPs on chrM or chrY because many of these are not currently called reliably. Using trio data, we flagged SNPs that failed a test for parent-offspring transmission; specifically, we regressed the child’s allele count against the mean parental allele count and flagged SNPs with fitted $\beta < 0.6$ and $P < 10^{-20}$ for a test of $\beta < 1$. We flagged SNPs with a call rate of $< 90\%$. We also tested genotyped SNPs for genotype date effects, and flagged SNPs with $P < 10^{-50}$ by ANOVA of SNP genotypes against a factor dividing genotyping date into 20 roughly equal-sized buckets. We flagged SNPs with large sex effect (ANOVA of SNP genotypes, $r^2 > 0.1$). Finally, we flag SNPs with probes matching multiple genomic positions in the reference genome (‘self chain’).

For imputed GWAS results, we flagged SNPs with an imputation $r^2 < 0.5$, as well as SNPs that had strong evidence of a platform batch effect. The batch effect test is an F test from an ANOVA of the SNP dosages against a factor representing v4 or v5 platform; we flagged results with $P < 10^{-50}$.

Across all results, we flag SNPs that have an available sample size of less than 20% of the total GWAS sample size. We also flag logistic regression results that did not converge due to complete separation, identified by $\text{abs}(\text{effect}) > 10$ or $\text{stderr} > 10$ on the log odds scale.

Short-read Whole Genome Sequencing

For Short-Read WGS, Psomagen quantified the starting genomic DNA material by fluorescence-based quantification method using Picogreen assay (cat# P7589, ThermoFisher) on VictorX2 multilabel plate reader (Perkin Elmer) and checked the DNA integrity using genomic DNA screen tape and reagents (cat. # 5067-5365/5067-5366, Agilent Technologies) on TapeStation 4200 (Agilent Technologies). A total of 0.5ug of gDNA was used as input material for Truseq PCR free library construction. The gDNA was fragmented to an insert size of 350 bp using LE220-plus Focused-ultrasonicator (Covaris). The generated double-stranded DNA with 3’ or 5’ overhangs was purified to get proper size range with sample purification beads. The size selected fragments were validated with D5000 ScreenTape (cat.# 5067-5588, Agilent Technologies) and D5000 Reagents (cat.# 5067-5589, Agilent Technologies) and then converted to blunt ends using end repair mix 2 from TruSeq DNA PCR-Free High Throughput Library Prep Kit (96 samples) (cat. # 20015963, illumina). One adenine (A) nucleotide was added to the 3’ ends of the blunt fragments to prevent them from ligating to each other during adapter ligation reaction. The adapter

from IDT for Illumina – TruSeq DNA UD Indexes v2 (96 Indexes, 96 Samples) (cat.# 20040870 illumina) kit having one corresponding thymine (T) nucleotide on the 3' end was ligated to A-tailed DNA fragments. The adapter ligated fragments were then purified with sample purification beads to remove excessive reagents. The final purified library was validated with KAPA Library Quantification Kits (Cat.# 07960298001, Roche) on Light cycler 480 (Roche). The validated library was then normalized to 5nM and loaded onto Novaseq6000 after diluting to desired loading concentration (1.6nM).

Global Parkinson's Genetics Program (GP2) Banner Authors

Members: 207

Version date: 16 March 2023

Country	Name	Institution	Funders and Disclosures
Argentina	Emilia M Gatto	Sanatorio de la Trinidad Mitre - INEBA	Nothing to declare
	Marcelo Kauffman	Hospital JM Ramos Mejia	Nothing to declare
Armenia	Samson Khachatryan	Somnus Neurology Clinic	Nothing to declare
	Zaruhi Tavadyan	Somnus Neurology Clinic	Nothing to declare
Australia	Claire E Shepherd	Neuroscience Research Australia	The Sydney Brain Bank is located at and supported by Neuroscience Research Australia
	Julie Hunter	ANZAC Research Institute	Nothing to declare
	Kishore Kumar	Garvan Institute of Medical Research and Concord Repatriation General Hospital	Paul Ainsworth Family Foundation
	Melina Ellis	Concord Hospital	Nothing to declare
	Miguel E. Rentería	QIMR Berghofer Medical Research Institute	The Australian Parkinson's Genetics Study is supported by the Shake It Up Australia Foundation and The Michael J. Fox Foundation for Parkinson's Research
	Sulev Koks	Murdoch University	Nothing to declare
Austria	Alexander Zimprich	Medical University Vienna Austria	Nothing to declare
Brazil	Artur F. Schumacher-Schuh	Universidade Federal do Rio Grande do Sul / Hospital de Clínicas de Porto Alegre	Nothing to declare
	Carlos Rieder	Federal University of Health Sciences of Porto Alegre	Nothing to declare

	Vitor Tumas	University of São Paulo	Nothing to declare
Canada	Edward A. Fon	Montreal Neurological Institute	Nothing to declare
	Oury Monchi	Institut universitaire de gériatrie de Montréal	CIHR, Brain Canada, Parkinson Canada
	Ted Fon	McGill University	Nothing to declare
Chile	Benjamin Pizarro-Galleguillos	Faculty of Medicine Universidad de Chile	Nothing to declare
	Marcelo Miranda	Fundación Diagnosis	Nothing to declare
	Maria Leonor Bustamante	Fundación Diagnosis and Faculty of Medicine Universidad de Chile	Nothing to declare
	Patricio Olguin	Facultad de Medicina, Universidad de Chile	Nothing to declare
	Paula Saffie Awad	Universidade Federal do Rio Grande do Sul	Nothing to declare
	Pedro Chana	CETRAM, Universidad de Santiago de Chile	Nothing to declare
China	Beisha Tang	Central South University	Nothing to declare
	Huifang Shang	West China Hospital Sichuan University	Nothing to declare
	Jifeng Guo	Xiangya Hospital	Nothing to declare
	Piu Chan	Capital Medical University	Nothing to declare
	Wei Luo	Zhejiang University	Nothing to declare
	Xiaopu Zhou	The Hong Kong University of Science and Technology	Nothing to declare
Colombia	Gonzalo Arboleda	Universidad Nacional de Colombia	Nothing to declare
	Jorge Orozco	Fundación Valle del Lili	Nothing to declare
	Marlene Jimenez del Rio	University of Antioquia	Nothing to declare
Costa Rica	Alvaro Hernandez	University of Costa Rica	Nothing to declare
Egypt	Mohamed Salama	The American University in Cairo	The AUC/ ASRT/ DAAD
	Walaa A. Kamel	Beni-Suef University	Nothing to declare

Ethiopia	Yared Z. Zewde	Department of Neurology, College of Health Sciences, Addis Ababa University	Nothing to declare
France	Alexis Brice	Paris Brain Institute	Nothing to declare
	Jean-Christophe Corvol	Sorbonne Université	Nothing to declare
Germany	Brit Mollenhauer	University Medical Center Göttingen	Nothing to declare
	Christine Klein	University of Luebeck	CK serves as a medical Advisor to Centogene on genetic testing reports in the field of movement disorders, except Parkinson's disease, and is a member of the Scientific Advisory Board of Retromer Therapeutics
	Eva-Juliane Vollstedt	University of Luebeck	Nothing to declare
	Günter Höglinger	Department of Neurology, University Hospital, LMU Munich, Germany	Nothing to declare
	Prof. Franziska Hopfner	Department of Neurology, University Hospital, LMU Munich, Germany	Nothing to declare
	Harutyun Madoev	University of Luebeck	Nothing to declare
	Johanna Junker	University of Luebeck, Institute of Neurogenetics	Nothing to declare
	Katja Lohmann	University of Luebeck	Nothing to declare
	Lara M. Lange	University of Lübeck and University Medical Center Schleswig-Holstein	Nothing to declare
	Manu Sharma	University of Tübingen	Dr. Sharma is further funded by the Michael J Fox Foundation, USA Genetic Diversity in PD Program: GAP-India Grant ID: 009411 and 023430. Dr Sharma is supported by DFG (SH-599/16-1)
	Sergio Groppa	University of Mainz	Nothing to declare
	Thomas Gasser	University of Tübingen	Nothing to declare

	Zih-Hua Fang	The German Center for Neurodegenerative Diseases	Nothing to declare
Ghana	Albert Akpalu	University of Ghana Medical School	Nothing to declare
	Vida Obese	Queen Square Institute of Neurology	Nothing to declare
Greece	Georgia Xiromerisiou	University of Thessaly	Nothing to declare
	Georgios Hadjigorgiou	University of Thessaly	Nothing to declare
	Ioannis Dagklis	Aristotle University of Thessaloniki	Nothing to declare
	Ioannis Tarnanas	Ionian University	Nothing to declare
	Leonidas Stefanis	Biomedical research Foundation of the Academy of Athens	PPMI2 (funded by MJFF), ALAMEDA (H2020 grant), funding by HFRI
	Maria Stamelou	Diagnostic and Therapeutic Centre HYGEIA Hospital	Nothing to declare
	Efthimios Dardiotis	University of Thessaly	Nothing to declare
Honduras	Alex Medina	Hospital San Felipe	Nothing to declare
Hong Kong	Germaine Hiu-Fai Chan	Queen Elizabeth Hospital	Nothing to declare
	Nancy Ip	Hong Kong University of Science and Technology	Nothing to declare
	Nelson Yuk-Fai Cheung	Queen Elizabeth Hospital	Nothing to declare
	Phillip Chan	Hong Kong University of Science and Technology	Nothing to declare
India	Asha Kishore	Aster Medcity	Michael J Fox Foundation
	Divya KP	Sree Chitra Tirunal Institute for Medical Sciences and Technology	Nothing to declare
	Pramod Pal	National Institute of Mental Health & Neurosciences	Nothing to declare
	Prashanth Lingappa Kukkle	Manipal Hospital	Nothing to declare
	Roopa Rajan	All India Institute of Medical Sciences	Nothing to declare

	Rupam Borgohain	Nizam's Institute Of Medical Sciences	Nothing to declare
Italy	Andrea Quattrone	University "Magna Graecia" of Catanzaro	Nothing to declare
	Enza Maria Valente	University of Pavia, IRCCS Mondino Foundation	Nothing to declare
	Lucilla Parnetti	University of Perugia	Nothing to declare
	Micol Avenali	University of Pavia, IRCCS Mondino Foundation	Nothing to declare
	Tommaso Schirinzi	University of Rome Tor Vergata	Nothing to declare
Japan	Manabu Funayama	Juntendo University	Nothing to declare
	Nobutaka Hattori	Juntendo University faculty of medicine	Nothing to declare
	Tomotaka Shiraishi	Jikei University School of Medicine	Nothing to declare
Kazakhstan	Altynay Karimova	Institute of Neurology and Neurorehabilitation	Nothing to declare
	Rauan Kaiyrzhanov	University College London	Nothing to declare
	Gulnaz Kaishibayeva	Institute of neurology and neurorehabilitation named after Smagul Kaishibayev	Nothing to declare
Luxembourg	Rejko Krüger	University of Luxembourg	Nothing to declare
Malaysia	Ai Huey Tan	University of Malaya	Nothing to declare
	Azlina Ahmad-Annuar	University of Malaya	Nothing to declare
	Mohamed Ibrahim Norlinah	Universiti Kebangsaan Malaysia	Nothing to declare
	Nor Azian Abdul Murad	UKM Medical Molecular Biology Institute (UMBI)	Nothing to declare
	Norlinah Mohamed Ibrahim	Universiti Kebangsaan Malaysia Medical Centre	Nothing to declare
	Shahrul Azmin	Universiti Kebangsaan	Nothing to declare

		Malaysia Medical Centre	
	Shen-Yang Lim	University of Malaya	Nothing to declare
	Wael Mohamed	International Islamic University Malaysia (IIUM)	Nothing to declare
	Yi Wen Tay	University of Malaya	Nothing to declare
Mexico	Daniel Martinez-Ramirez	Tecnologico de Monterrey	Nothing to declare
	Mayela Rodriguez-Violante	Instituto Nacional de Neurologia y Neurocirugia	Nothing to declare
	Paula Reyes-Pérez	Universidad Nacional Autónoma de México	Nothing to declare
Nepal	Rajeev Ojha	Tribhuvan University	Nothing to declare
New Zealand	Tim J Anderson	University of Otago, Christchurch, New Zealand; New Zealand Brain Research Institute; Neurology Department, Te Whatu Ora - Waitaha Canterbury, New Zealand	Health Research Council of New Zealand; Ministry of Business Innovation and Employment, New Zealand, Neurological Foundation of New Zealand
	Toni L Pitcher	University of Otago, Christchurch, New Zealand; New Zealand Brain Research Institute	Health Research Council of New Zealand
Nigeria	Arinola Sanyaolu	University of Lagos	Nothing to declare
	Njideka Okubadejo	University of Lagos	Michael J Fox Foundation; Tertiary Education Trust Fund (TETFUND) National Research Fund
	Olaitan Okunoye	University College London	Nothing to declare
	Oluwadamilola Ojo	College of Medicine of the University of Lagos	Nothing to declare
Norway	Jan O. Aasly	Norwegian University of Science and Technology	Nothing to declare
	Lasse Pihlstrøm	Oslo University Hospital	Southeastern Regional Health Authority, Norway

	Manuela Tan	Oslo University Hospital	Southeastern Regional Health Authority, Norway Michael J Fox Foundation
Pakistan	Shoaib Ur-Rehman	University of science and Technology Bannu	Nothing to declare
Peru	Miguel Inca-Martinez	Cleveland Clinic	Nothing to declare
	Mario Cornejo-Olivas	Neurogenetics Research Center, Instituto Nacional de Ciencias Neurologicas, Lima, Peru Carrera de Medicina Humana, Universidad Cientifica del Sur, Lima, Peru.	MJFF and ASAP
Puerto Rico	Angel Vinuela	University of Puerto Rico	Nothing to declare
Russia	Elena Iakovenko	Research Center of Neurology	Nothing to declare
Saudi Arabia Z	Bashayer Al Mubarak	King Faisal Specialist Hospital and Research Center	Nothing to declare
	Muhammad Umair	Medical Genomics Research Department, King Abdullah International Medical Research Center (KAIMRC), King Saud Bin Abdulaziz University for Health Sciences, Ministry of National Guard Health Affairs (MNGH), Riyadh, Saudi Arabia.	Nothing to declare
Singapore	Jia Nee Foo	Lee Kong Chian School of Medicine, Nanyang Technological University Singapore, Singapore Genome Institute of Singapore, Agency	Singapore National Medical Research Council (MOH-000559)

		for Science, Technology and Research (A*STAR), Singapore	
	Eng-King Tan	Department of Neurology, National Neuroscience Institute, Singapore Duke NUS Medical School, Singapore	National Medical Research Council Singapore (MOH-OFLCG-000207)
South Africa	Jonathan Carr	University of Stellenbosch	Nothing to declare
	Soraya Bardien	Division of Molecular Biology and Human Genetics, Stellenbosch University and The South African Medical Research Council/Stellenbosch University Genomics of Brain Disorders Research Unit	Funded by the National Research Foundation of South Africa [Grant Number 129249]
South Korea	Beomseok Jeon	Seoul National University Hospital	Nothing to declare
	Yun Joong Kim	Yongin Severance Hospital	Nothing to declare
Spain	Janet Hoenicka	Institut de Recerca Sant Joan de Deu	Fondo de Investigación Sanitaria, Instituto Salud Carlos III, Grant PI019/00126
	Maria Teresa Perifan	Instituto de Biomedicina de Sevilla	Nothing to declare
	Pau Pastor	Unit of Neurodegenerative diseases, Department of Neurology, University Hospital Germans Trias i Pujol and Germans Trias i Pujol Research Institute (IGTP), Badalona, Barcelona, Spain	Nothing to declare
	Katrin Beyer	Germans Trias i Pujol Research Institute	Nothing to declare

		(IGTP), Badalona, Barcelona, Spain	
	Ignacio Alvarez	Department of Neurology, Hospital Universitari Mutua de Terrassa, and Fundació per a la Recerca Biomèdica i Social Mútua de Terrassa, Terrassa, Spain.	Nothing to declare
Sudan	Sarah El-Sadig	Faculty of medicine university of Khartoum	Nothing to declare
Taiwan	Chin-Hsien Lin	National Taiwan University Hospital	Nothing to declare
	Hsiu-Chuan Wu	Chang Gung Memorial Hospital	Nothing to declare
	Pin-Jui Kung	Genome and systems biology degree program	Nothing to declare
	Ruey-Meei Wu	National Taiwan University Hospital	I have funding from 1. Minister of Science and Technology, Taiwan Government; 2. National Taiwan University, 3 Parkinson foundation, USA, 4. Michael J Fox Foundation.
	Serena Wu	Chang Gung University	Nothing to declare
	Yihru Wu	Chang Gung Memorial Hospital	Nothing to declare
Tunisia	Rim Amouri	National Institute Mongi Ben Hamida of Neurology	Nothing to declare
	Samia Ben Sassi	Mongi Ben Hmida National Institute of Neurology	Nothing to declare
Turkey	A. Nazlı Başak	Koç University	Kirac Foundation and Koc Univ.
	Gencer Genc	Şişli Etfal Training and Research Hospital	Nothing to declare
	Özgür Öztop Çakmak	Koç University	Nothing to declare
	Sibel Ertan	Koç University Medical School	Nothing to declare

United Kingdom	Alastair Noyce	Queen Mary University of London	Prof. Noyce reports grants from Parkinson's UK, Barts Charity, Cure Parkinson's, NIHR, Innovate UK, Virginia Keiley benefaction, Alchemab, Aligning Science Across Parkinson's and Michael J Fox Foundation. Consultancy and personal fees from Astra Zeneca, AbbVie, Profile, Roche, Biogen, UCB, Bial, Charco Neurotech, uMedeior and Britannia.
	Alejandro Martínez-Carrasco	University College London	Global Parkinson's Genetics Program
	Camille Carroll	University of Plymouth	C Carroll receives salary from University of Plymouth, University Hospitals Plymouth NHS Trust and National Institute of Health Research; she has received advisory, consulting, and/or lecture fees from AbbVie, Bial, Lundbeck, Global Kinetics, Britannia and Medscape, and research funding from Parkinson's UK, Edmond J Safra Foundation, National Institute of Health Research and Cure Parkinson's
	Claire Bale	Parkinson's UK	Nothing to declare
	Eleanor J. Stafford	University College London	Nothing to declare
	Henry Houlden	University College London	Nothing to declare
	Huw R Morris	University College London	Dr Morris is employed by UCL. In the last 12 months he reports paid consultancy from Roche and Amylyx ; lecture fees/honoraria - BMJ, Kyowa Kirin, Movement Disorders Society. Research Grants from Parkinson's UK, Cure Parkinson's Trust, PSP Association, CBD Solutions, Drake Foundation, Medical Research Council, Michael J Fox Foundation. Dr Morris is a co-applicant on a patent application related to C9ORF72 - Method for diagnosing a neurodegenerative disease (PCT/GB2012/052140)

	John Hardy	University College London	Nothing to declare
	Kin Ying Mok	University College London	Nothing to declare
	Mie Rizig	University College London	Nothing to declare
	Nicholas Wood	University College London	ASAP-CRN
	Nigel Williams	Cardiff University	Parkinson's UK
	Patrick Alfryn Lewis	Royal Veterinary College University of London	MJFF, UKRI (BBSRC, EPSRC), Parkinson's UK, ASAP research network network
	Rimona Weil	University College London	Nothing to declare
	Simona Jasaitye	University College London	Nothing to declare
	Simon Stott	Cure Parkinson's	Employee of Cure Parkinson's
	Sumit Dey	Queen Mary University of London	Nothing to declare
USA	Alberto Espay	University of Cincinnati	Nothing to declare
	Alyssa O'Grady	The Michael J. Fox Foundation for Parkinson's Research	Nothing to declare
	Andrew B Singleton	National Institute on Aging	Michael J Fox Foundation for Parkinson's disease Research. Aligning Science Across Parkinson's Initiative
	Andrew K. Sobering	Augusta University / University of Georgia Medical Partnership	Nothing to declare
	Bernadette Siddiqi	The Michael J. Fox Foundation for Parkinson's Research	Nothing to declare
	Bradford Casey	The Michael J Fox Foundation for Parkinson's Research	Nothing to declare
	Brian Fiske	The Michael J. Fox Foundation for Parkinson's Research	Nothing to declare
	Cabell Jonas	Mid-Atlantic Permanente Medical Group / Kaiser Permanente Mid-Atlantic States	Nothing to declare

	Caroline B. Pantazis	National Institutes of Health	Nothing to declare
	Claire Wegel	Indiana University	Nothing to declare
	Cornelis Blauwendraat	National Institutes of Health	Nothing to declare
	Dan Vitale	National Institutes of Health	Nothing to declare
	Deborah Hall	Rush University	Nothing to declare
	Dena Hernandez	National Institutes of Health	Nothing to declare
	Ejaz Shiamim	Kaiser Permanente	Nothing to declare
	Ekemini Riley	Coalition for Aligning Science	Nothing to declare
	Faraz Faghri	National Institutes of Health	F.F.'s participation in this research was supported in part by the Intramural Research Program of the NIH, National Institute on Aging (NIA), National Institutes of Health, Department of Health and Human Services; project number ZO1 AG000535, as well as the National Institute of Neurological Disorders and Stroke. F.F.'s participation in this project was part of a competitive contract awarded to Data Tecnica International LLC by the National Institutes of Health to support open science research.
	Geidy E. Serrano	Banner Sun Health Research Institute	Banner Sun Health Research Institute Brain and Body Donation Program of Sun City, Arizona for the provision of human biological materials. The Brain and Body Donation Program has been supported by the National Institute of Neurological Disorders and Stroke (U24 NS072026 National Brain and Tissue Resource for Parkinson's Disease and Related Disorders), the National Institute on Aging (P30 AG19610 and P30AG072980, Arizona Alzheimer's Disease Center), the Arizona Department of Health Services (contract 211002, Arizona Alzheimer's Research Center), the Arizona Biomedical

			Research Commission (contracts 4001, 0011, 05-901 and 1001 to the Arizona Parkinson's Disease Consortium) and the Michael J. Fox Foundation for Parkinson's Research .”
	Hampton Leonard	National Institute on Aging/National Institutes of Health	H.L.L is supported by a competitive contract awarded to Data Tecnica International LLC by the National Institutes of Health to support open science research
	Hiroataka Iwaki	Data Tecnica International	Nothing to declare
	Honglei Chen	Michigan State University	NIH/DoD/Parkinson Foundation/MSU Foundation/Gibby vs. Parky Foundation - No COI to disclose
	Ignacio F. Mata	Cleveland Clinic	Funding from MJFF and NIH
	Ignacio Juan Keller Sarmiento	Northwestern University	Nothing to declare
	Jared Williamson	Kaiser Permanente	Nothing to declare
	Jonggeol Jeff Kim	National Institutes of Health	Nothing to declare
	Joseph Jankovic	Baylor College of Medicine	Nothing to declare
	Joshua Shulman	Baylor College of Medicine / Texas Children's Hospital	Collection of samples and data at Baylor College of Medicine was supported by the Huffington Foundation.
	Justin C. Solle	The Michael J. Fox Foundation for Parkinson's Research	Nothing to declare
	Kaileigh Murphy	The Michael J. Fox Foundation for Parkinson's Research	Nothing to declare
	Karen Nuytemans	University of Miami Miller School of Medicine	This work has been supported by the American Parkinson Disease Association and the Margaret Q. Landenberger Research Foundation.

	Karl Kiebertz	Beth Israel Deaconess Medical Center	Nothing to declare
	Kenneth Marek	Institute for Neurodegenerative Disorders	Consultant for Michael J Fox Foundation, GE Healthcare, Roche, UCB, BIAL, Denali, Takeda, , Cerapsir, UCB, Biohaven, Neuron23, Aprinoia, Astellas, Calico, Genentech, Invicro
	Kristin S. Levine	Data Tecnica International	K.S.L. is supported by a competitive contract awarded to Data Tecnica International LLC by the National Institutes of Health to support open science research
	Lana M. Chahine	University of Pittsburgh	Dr. Chahine receives research support from the Michael J Fox Foundation, UPMC Competitive Medical Research Fund, National Institutes of Health, and University of Pittsburgh, is study site investigator for a study sponsored by Biogen, receives consulting fees from Grey Matter Technologies, receives royalties from Elsevier (for authorship), and receives royalties from Wolters Kluwel (for authorship).
	Laurel Screven	National Institute on Aging	Nothing to declare
	Lisa Shulman	University of Maryland	Nothing to declare
	Luca Marsili	University of Cincinnati	Nothing to declare
	Maggie Kuhl	The Michael J. Fox Foundation for Parkinson's Research	Nothing to declare

Marissa Dean	University of Alabama at Birmingham	Dr. Dean is an investigator in studies funded by Abbvie, Inc., Hoffmann-La Roche, CHDI Foundation, Inc., Annexon, Inc., Retrophin, Inc, Neurocrine Biosciences, UniQure Biopharma B.V., Praxis Precision Medicines, Neuraly, Inc., Michael J. Fox Foundation for Parkinson's Research, and US Army Medical Research and Materiel Command (grant#W81XWH-18-1-0508). In addition, Dr. Dean receives support through the Huntington's Disease Society of American Centers of Excellence program.
Mary B Makarious	National Institutes of Health	Nothing to declare
Mathew Koretsky	National Institutes of Health	Nothing to declare
Megan J Puckelwartz	Northwestern University	Nothing to declare
Mike A. Nalls	National Institutes of Health	M.A.N.'s participation in this project was part of a competitive contract awarded to Data Tecnica International LLC by the National Institutes of Health to support open science research. M.A.N. also currently serves as an advisor for Clover Therapeutics and Neuron23 Inc.
Naomi Louie	The Michael J. Fox Foundation for Parkinson's Research	Nothing to declare
Niccolò Emanuele Mencacci	Northwestern University	Nothing to declare

Roy Alcalay	Columbia University	Dr. Alcalay is funded by the Michael J. Fox Foundation and the Parkinson's Foundation. He received consultation fees from Avrobio, Caraway, GSK, Merck, Sanofi, Ono Therapeutics and Takeda
Sara Bandres-Ciga	National Institutes of Health	Nothing to declare
Sohini Chowdhury	The Michael J. Fox Foundation for Parkinson's Research	Nothing to declare
Sonya Dumanis	Aligning Science Across Parkinson's	Nothing to declare
Steven Lubbe	Northwestern University	Nothing to declare
Tao Xie	University of Chicago	Nothing to declare
Tatiana Foroud	Indiana University School of Medicine	Michael J. Fox Foundation
Thomas Beach	Sun Health Research Institution	Banner Sun Health Research Institute Brain and Body Donation Program of Sun City, Arizona for the provision of human biological materials. The Brain and Body Donation Program has been supported by the National Institute of Neurological Disorders and Stroke (U24 NS072026 National Brain and Tissue Resource for Parkinson's Disease and Related Disorders), the National Institute on Aging (P30 AG19610 and P30AG072980, Arizona Alzheimer's Disease Center), the Arizona Department of Health Services (contract 211002, Arizona Alzheimer's Research Center), the Arizona Biomedical Research Commission (contracts 4001, 0011, 05-901 and 1001 to the Arizona Parkinson's Disease Consortium) and the Michael J. Fox Foundation for Parkinson's Research ."
Todd Sherer	The Michael J Fox Foundation for Parkinson's Research	Nothing to declare

	Yared Z. Zewde	University of California San Francisco	Nothing to declare
	Yeajin Song	National Institutes of Health	Nothing to declare
Vietnam	Duan Nguyen	Hue University	Nothing to declare
	Toan Nguyen	Hue University	Nothing to declare
Zambia	Masharip Atadzhanov	University of Zambia	Nothing to declare

Nigeria Parkinson Disease Research Network

Surname	First name	Degree (preferred one specified)	Institutional affiliation (Name, City, State, Country)	ORCID
Agulanna	Uchechi	MBBS	Lagos University Teaching Hospital, Idi Araba, Lagos State, Nigeria	0000-0002-0145-7833
Akinyemi	Rufus	PhD	Neuroscience and Ageing Research Unit, Institute for Advanced Medical Research and Training, College of Medicine, University of Ibadan, Ibadan, Oyo State, Nigeria	0000-0001-5286-428X
Ali	Mohammed	MBBS	Federal Teaching Hospital Gombe, Gombe State, Nigeria	0000-0002-5596-9877
Ani-Osheku	Ifeyinwa	FMCP	Asokoro District Hospital, Asokoro, Abuja, Nigeria	0000-0002-1387-9806
Arigbodi	Ohwotemu	MBBS	Delta State University, Abraka, Delta State, Nigeria	0000-0001-9811-410X
Bello	Abiodun	FWACP	University of Ilorin Teaching Hospital, Ilorin, Kwara State, Nigeria	0000-0002-2078-6739
Erameh	Cyril	MBBS	Irrua Specialist Teaching Hospital, Irrua, Edo State, Nigeria	0000-0001-7783-2495
Farombi	Temitope	MBBS	University College Hospital, Ibadan, Oyo State, Nigeria	0000-0002-9109-7164
Fawale	Michael	MSc	Obafemi Awolowo University, Ile-Ife, Osun State, Nigeria	0000-0003-3205-7514
Imarhiagbe	Frank	MBCHB	University of Benin, Benin City, Edo State, Nigeria	0000-0002-8518-2186
Iwuozo	Emmanuel	FMCP	Benue State University, Makurdi, Benue State, Nigeria	0000.0003-2378-3872
Komolafe	Morenikeji	MBBS	Obafemi Awolowo University, Ile-Ife, Osun State, Nigeria.	0000-0002-0592-5120
Nwani	Paul	MBBS	Nnamdi Azikiwe University Teaching Hospital, Nnewi, Anambra State, Nigeria	0000-0002-1665-2738
Nwazor	Ernest	FMCP	Rivers State University Teaching Hospital, Port Harcourt, Rivers State, Nigeria	0000-0001-7950-2449
Nyandaiti	Yakub	MBBS	University of Maiduguri Teaching Hospital, Maiduguri, Borno State, Nigeria	0000-0002-3922-6344
Obiabo	Yahaya	MBCHB	Federal University of Health Sciences, Otukpo, Benue State, Nigeria	0000-0003-4563-8908
Odeniyi	Olanike	MBBS	General Hospital, Lagos Island, Lagos State, Nigeria	0000-0002-8778-2230
Odiase	Francis	MBBS	University of Benin, Benin City, Edo State, Nigeria	0000-0001-9788-6482
Ojini	Francis	MSc	University of Lagos, Lagos, Lagos State, Nigeria	0000-0003-4108-4995
Onwuegbuzie	Gerald	MBBS	University of Abuja, Abuja, Federal Capital Territory, Nigeria	0000-0002-5203-1074
Osaigbovo	Godwin	MBBS	Jos University Teaching Hospital, Jos, Plateau State, Nigeria	0000 0001 5572 0548
Osemwegie	Nosakhare	MBBS	University of Port Harcourt, Port Harcourt, Rivers State, Nigeria	0000-0002-8725-2256
Oshinaike	Olajumoke	FWACP	Lagos State University College of Medicine, Ikeja, Lagos State, Nigeria	0000-0002-6290-6866
Otubogun	Folajimi	MBCHB	Federal Medical Center, Ebute Metta, Lagos State, Nigeria	0000-0001-9753-4532
Oyakhire	Shyngle	MBBS	National Hospital, Abuja, Federal Capital Territory, Nigeria	0000-0002-8442-9896
Ozomma	Simon	FMCP	University of Calabar Teaching Hospital, Calabar, Cross River State, Nigeria	0009-0001-6921-3544
Samuel	Sarah	MBBS	University of Maiduguri Teaching Hospital, Maiduguri, Borno State, Nigeria.	0000-0001-6178-8282
Taiwo	Funmilola	MBCHB	University College Hospital, Ibadan, Oyo State, Nigeria	0000-0002-5797-0943
Wahab	Kolawole	MD	University of Ilorin, Ilorin, Kwara State, Nigeria	0000-0002-2914-1953
Zubair	Yusuf	MSc	National Hospital, Abuja, Federal Capital Territory, Nigeria	0000-0002-3017-7961

International Parkinson Disease Genomics Consortium Africa members by country

Cameroon

1. Daniel Gams Massi, MD. Douala General Hospital, University of Buea, Cameroon.
2. Eric Gueumekane Bila lamou, MD. University of Douala, Douala, Cameroon.
3. Leonard Njamnshi Nfor, MD. Yaounde Central Hospital, Yaoundé, Cameroon.
4. Mélanie Annick Magnerou, MD. Douala Gynaeco-Obstetric and Paediatric Hospital, Douala, Cameroon.
5. Yannick Fogang Fogoum, MD. Bafoussam Regional Hospital, Bafoussam, Cameroon.

Egypt

1. Ali shalash, MD. Neurology Department, Ain Shams University, Cairo, Egypt.
2. Hassan El-Fawal, PhD. Institute of Global Health and Human Ecology, the American University in Cairo, Egypt.
3. Eman Khedr, MD. Neurology Department, Assiut University, Assiut, Egypt.
4. Gharib Fawi, MD. Neurology Department, Sohag University, Sohag, Egypt.
5. Mohamed A. Eltantawi, MD. Neurology Department, Delta University for Science and Technology, Belkas, Dakahlia Governorate, Egypt.
6. Mohamed Salama, PhD. Institute of Global Health and Human Ecology, the American University in Cairo, Egypt.
7. Shaimaa El-Jaafary, MD. Neurology Department, Cairo University, Cairo, Egypt.
8. Sharifa Hamed, MD. Neurology Department, Assiut University, Assiut, Egypt.

Ethiopia

1. Abenet Tafesse Mengesha, MD. Department of Neurology, School of Medicine College of Health Sciences, Addis Ababa University, Addis Ababa, Ethiopia.
2. Biniyam Alemayehu Ayele, MD. Department of Neurology, School of Medicine College of Health Sciences, Addis Ababa University, Addis Ababa, Ethiopia.
3. Dereje Melka Oda, MD. Department of Neurology, School of Medicine College of Health Sciences, Addis Ababa University, Addis Ababa, Ethiopia.
4. Yared Zenebe Zewde, MD. Department of Neurology, School of Medicine College of Health Sciences, Addis Ababa University, Addis Ababa, Ethiopia.
5. Yohanesse Debebe Gelan, MD. Department of Neurology, School of Medicine College of Health Sciences, Addis Ababa University, Addis Ababa, Ethiopia.

Ghana

1. Albert Akpalu,FRCP. Department of Medicine, Division of Neurology, University of Ghana Medical School, Accra, Ghana.
2. Augustina Charway-Felli, PhD. Department of Medicine, Division of Neurology, 37 Military Hospital, Accra, Ghana.
3. Fred Stephen Sarfo, PhD. Department of Medicine, Division of Neurology, Kwame Nkrumah University of Science & Technology, Kumasi, Ghana.
4. Patrick Adjei, PhD. Department of Medicine, Division of Neurology, University of Ghana Medical School, Accra, Ghana.
5. Vida Obese, MD. Department of Medicine, Division of Neurology, Komfo Anokye Teaching Hospital, Kumasi, Ghana.

Mali

1. Abdoulaye Bocoum, MD. University of Sciences, Technics and Technologies of Bamako, Mali.
2. Abdou Koita, MD. University of Sciences, Technics and Technologies of Bamako, Mali.
3. Cheick Oumar Guinto, MD. University of Sciences, Technics and Technologies of Bamako, Mali; Department of Neurology, Teaching Hospital of Point "G", Bamako, Mali.
4. Toumany Coulibaly, MD. Department of Neurology, Teaching Hospital of Point "G", Bamako, Mali.
5. Youssoufa Maiga, MD. University of Sciences, Technics and Technologies of Bamako, Mali; Department of Neurology, Teaching Hospital of Gabriel Touré, Bamako, Mali.
6. Zaynab Kone, MD. Department of Neurology, Teaching Hospital of Point "G", Bamako, Mali.

Nigeria

1. Abiodun Bello, FWACP. University of Ilorin Teaching Hospital, Ilorin, Nigeria.
2. Agabi Osigwe, FMCP. consultant Neurologist with the Lagos University Teaching Hospital, Nigeria.
3. Akintunde A. Adebawale, FWACP. Obafemi Awolowo University, Ile-Ife, Osun State. Nigeria
4. Akpekpe John, FWACP. Federal Medical Center, Asaba, Delta State, Nigeria.
5. Alagoma Iyagba, MBBS. University of Port Harcourt and University of Port Harcourt Teaching Hospital, port Harcourt, Rivers State. Nigeria.
6. Ali Mohammed Wulgo, FWACP. Federal Teaching Hospital, Gombe, Gombe State. Nigeria
7. Ani-Osheku Ifeyinwa, FMCP. Asokoro District Hospital, Asokoro, Federal Capital Territory, Abuja. Nigeria.
8. Babawale Arabambi, FWACP. Lagos State University Teaching Hospital. Nigeria.
9. Charles Achoru, FWACP. University Teaching Hospital, Jos, Plateau State. Nigeria.
10. Christian Ejikeme Agu Alex Ekwueme, Federal Teaching Hospital, Abakaliki, Ebonyi State. Nigeria.
11. Cyril Erameh, FMCP. Irrua Specialist Hospital, Irrua, Edo State. Nigeria.
12. Emmanuel Uzodinma Iwuzo, FMCP. Medicine department, College of Health Sciences Benue State University, Benue State. Nigeria.
13. Ernest. O. Nwazor. FWACP Federal Medical Center, Owerri, Imo State & College of Medical Sciences, Madonna University, Elele, Rivers State. Nigeria.
14. Fawale Michael Bimbola, FMCP. Obafemi Awolowo University and Obafemi Awolowo University Teaching Hospitals Complex, Ile-Ife, Osun State. Nigeria.
15. Folajimi Otubogun, FWACP. University of Medical Sciences Teaching Hospitals Complex, Akure, Ondo State. Nigeria.
16. Francis Odiase, FMCP. University of Benin, University of Benin Teaching Hospital, Benin city Edo State, Nigeria.
17. Franklin Dike, FWACP. University of Uyo Teaching Hospital, Uyo, Akwa Ibom State. Nigeria.
18. Ishola Ismail O. Ph.D. Department of Pharmacology, Lagos State University and Lagos State University Teaching Hospital, Lagos State. Nigeria.
19. Kolawole Wahab, FMCP. University of Ilorin. Ilorin. Nigeria.
20. Kehinde Johnson Abiodun, FMCP. Consultant Neurologist, Federal Medical Centre, Abuja, FCT, Nigeria
21. Morenikeji Komolafe, FWACP. Department of Medicine, Faculty of Clinical Sciences, College of Medicine, Obafemi Awolowo University, Ile-Ife, Osun State, Nigeria.
22. Njideka Okubadejo, FMCP. Neurology Unit, Department of Medicine, Faculty of Clinical Sciences, College of Medicine, University of Lagos, Lagos State, Nigeria

23. Obiabo Yahaya Olugbo, FMCP. Neurology Unit, Department of Internal Medicine, Delta State, University Teaching Hospital, Oghara. Nigeria
24. Ohwotemu Arigbodi, FMCP. Delta state University Teaching hospital, Oghara. Nigeria.
25. Olajumoke Oshinaike, FWACP. Lagos State University & Lagos State University Teaching Hospital, Lagos State. Nigeria.
26. Osemwegie Nosakhare, FMCP. University of Port Harcourt and University of Port Harcourt Teaching Hospital. Nigeria
27. Oluchi Ekenze, FWACP. University of Nigeria & University of Nigeria Teaching Hospital, Ituku-Ozalla, Enugu State. Nigeria
28. Oluwadamilola Ojo, FMCP. University of Lagos & Lagos University Teaching Hospital, Lagos State. Nigeria
29. Paul Agabi Osigwe, FMCP. Lagos University Teaching Hospital, Lagos State. Nigeria.
30. Paul O Nwani, FWACP. Neurology Unit, Dept. of Medicine, Faculty of Medicine, Nnamdi Azikiwe University, Nnewi, Anambra State, Nigeria.
31. Salisu Abdullahi Balarabe, FWACP. Usmanu Danfodiyo University Teaching Hospital Sokoto, Nigeria
32. Sani Abubakar Atta Ahmadu Bello, WACP. University and Ahmadu Bello University Teaching Hospital, Zaria, Kaduna State. Nigeria
33. Uduak E. Williams, FMCP. University of Calabar and University of Calabar Teaching Hospital, Calabar, Nigeria.
34. Oladunni V Abiodun, FMCP, General Hospital Isolo, Isolo, Lagos State. Nigeria
35. Yusuf Agboola Zubair, FWACP. National Hospital, Federal Capital Territory, Abuja.

Senegal

1. Maouly Fall, MD. Centre Hospitalier National de Pikine and Cheikh Anta Diop University, Senegal.
2. Alassane Mamadou Diop, MD. Centre Hospitalier National de Pikine, Senegal.
3. Ewodo Touna Hilaire Dominique, MD. Neurological Clinic Ibrahima P. Ndiaye, Fann Hospital University – Cheikh Anta Diop University of Dakar (UCAD), Dakar, Senegal.

South Africa

1. Andre Mochan, MD. University of the Witwatersrand, Neurosciences, Division of Neurology, Johannesburg, South Africa.
2. Girish Modi, PhD. University of the Witwatersrand, Neurosciences, Division of Neurology, Johannesburg, South Africa.
3. Saiesha Dindayal, FC Neurol (SA). University of the Witwatersrand, Neurosciences, Division of Neurology, Johannesburg, South Africa.

Sudan

1. Eman Ali Awadelkareem, MSc. Sudan University of Science and Technology, Sudan.
2. Inas Elsayed, MSc. Faculty of Pharmacy, University of Gezira, Sudan.
3. Maha Dahawi, MSc. Faculty of Medicine, University of Khartoum, Sudan.
4. Mosab Ali Awadelkareem, MSc. Faculty of Medical Laboratory Sciences, Al-Neelain University, Sudan.
5. Sarah Misbah, MRCP. Faculty of Medicine, University of Khartoum, Sudan.

Tanzania

1. Brighton Mushengezi, MD. Muhimbili National Hospital, Upanga Branch. Tanzania.
2. Henrika Kimambo, MD. Muhimbili National Hospital UPanga Branch. Tanzania.
3. Leonard Msango, MD. Muhimbili National Hospital, Mloganzile Branch. Tanzania.
4. Philip Adebayo, FWACP. Aga Khan Hospital and Aga Khan University. Tanzania.
5. Kigocha OKengo, MD. Muhimbili National Hospital UPanga Branch. Tanzania
6. Marieke Diekker, PhD, Kilimanjaro Christian Medical Center. Kilimanjaro. Tanzania.
7. Sarah URassa, MSc. Kilimanjaro Christian Medical Center. Kilimanjaro. Tanzania.

Tunisia

1. Riadh Gouider, MD. Department of Neurology, Clinical Investigation Center, Razi Hospital, Faculty of Medicine of Tunis, Tunis El Manar University, Tunisia.
2. Mouna Ben Djebara, MD. Department of Neurology, Clinical Investigation Center, Razi Hospital, Faculty of Medicine of Tunis, Tunis El Manar University, Tunisia.
3. Amina Gargouri, MD. Department of Neurology, Clinical Investigation Center, Razi Hospital, Faculty of Medicine of Tunis, Tunis El Manar University, Tunisia.
4. Imen Kacem, MD. Department of Neurology, Clinical Investigation Center, Razi Hospital, Faculty of Medicine of Tunis, Tunis El Manar University, Tunisia.
5. Amina Nasri, MD. Department of Neurology, Clinical Investigation Center, Razi Hospital, Faculty of Medicine of Tunis, Tunis El Manar University, Tunisia.
6. Saloua Mrabet, MD. Department of Neurology, Clinical Investigation Center, Razi Hospital, Faculty of Medicine of Tunis, Tunis El Manar University, Tunisia.
7. Ikram Sghaier, PhD in Biology (human genetics), Department of Neurology, Clinical Investigation Center, Razi Hospital, Tunis - Tunisia
8. Imen Mkada, PhD. Department of Neurology, Clinical Investigation Center, Razi Hospital, Tunis - Tunisia

Zambia

1. Masharip Atadzhanov, PhD. University of Zambia, School of Medicine, Department of Internal Medicine, Lusaka, Zambia
2. Lorraine Chishimba, MMED Adult neurology. University Teaching Hospital, Department of Internal Medicine, Lusaka, Zambia.

UK

1. Mie Rizig, PhD. Department of Neuromuscular Diseases, UCL Queen Square Institute of Neurology, Queen Square London WC1N 3BG, UK.
2. Fatumah Jama, BSc. Department of Neuromuscular Diseases, UCL Queen Square Institute of Neurology, Queen Square London WC1N 3BG, UK.
3. Olaitan Okunoye, MSc. Department of Movement Disorders, UCL Queen Square Institute of Neurology, Queen Square London WC1N 3BG, UK.
4. John Hardy, PhD. Department of Neurodegenerative Diseases, UCL Queen Square Institute of Neurology, Queen Square London WC1N 3BG, UK.
5. Henry Houlden, PhD. Department of Neuromuscular Diseases, UCL Queen Square Institute of Neurology, Queen Square London WC1N 3BG, UK.

USA

1. Andrew Singleton, PhD. Laboratory of Neurogenetics, National Institute on Aging, National Institutes of Health, Bethesda, MD 20892, USA.

2. Mike Nalls, PhD. Laboratory of Neurogenetics, National Institute on Aging, National Institutes of Health, Bethesda, MD 20892, USA; and Data Tecnica International, Glen Echo, MD, USA.

BLAAC PD Study Group Members

Ejaz Shamim, MD - Department of Neurology, Kaiser Permanente Mid-Atlantic States, Rockville, Maryland

Cabell Jonas, PhD

Jared Williamson

Deborah A. Hall, MD, PhD - Department of Neurology, Rush University Medical Center, Chicago, Illinois

Marc Rosenbaum, MS, CGC

Staci Davis, BS

Marissa Dean, MD and David G Standaert, MD, PhD - Department of Neurology, University of Alabama at Birmingham

Candace Cromer, BSc

Jenna Smith, RN

Joseph Richardson, RN

Lauren Ruffrage

Rebeka Sipma, MD

Tao Xie, MD, PhD - Department of Neurology, University of Chicago Medicine, Chicago, Illinois, USA

Manesh Padmanaban, MD

Natalie Warren, BSc

Tomas Mercado

Elizabeth Disbrow, PhD - Center for Brain Health, LSU Health Shreveport, Shreveport, LA 71130, USA; Department of Neurology, LSU Health Shreveport, Shreveport, LA 71130, USA

Brian Chauppeta

Fermine Thomas-Dean, PhD

Jamie Toms, MD

Katelyn Lofton, BSc

Ashley Rawls, MD, MS - Department of Neurology, University of Florida College of Medicine, Gainesville, FL-32611, USA

Kyle Rizer

Nieci Black, MPH

The Michael J Fox Foundation for Parkinson's Research

Justin Solle, MBA

Alyssa O'Grady, BSc

Todd Sherer, PhD

Brian Fiske, PhD