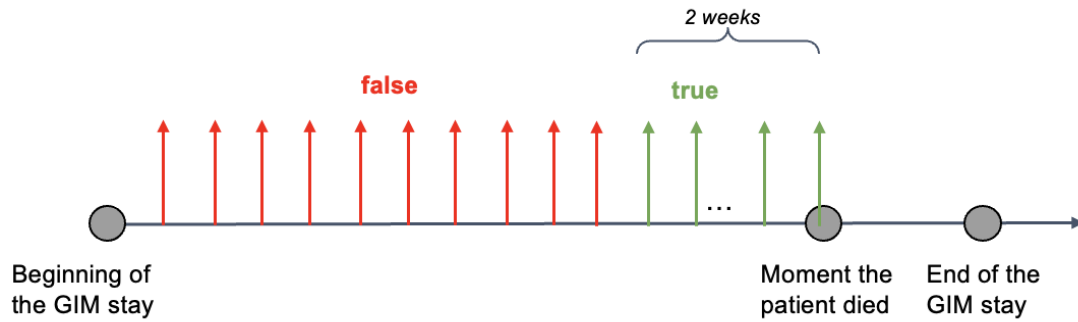
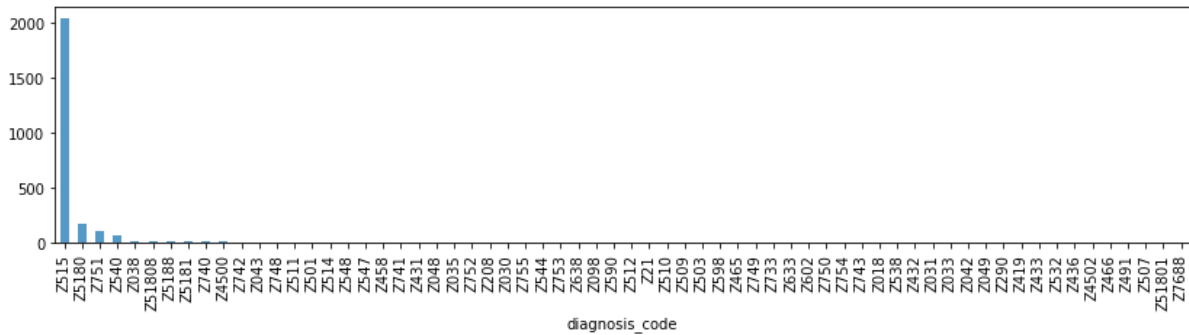


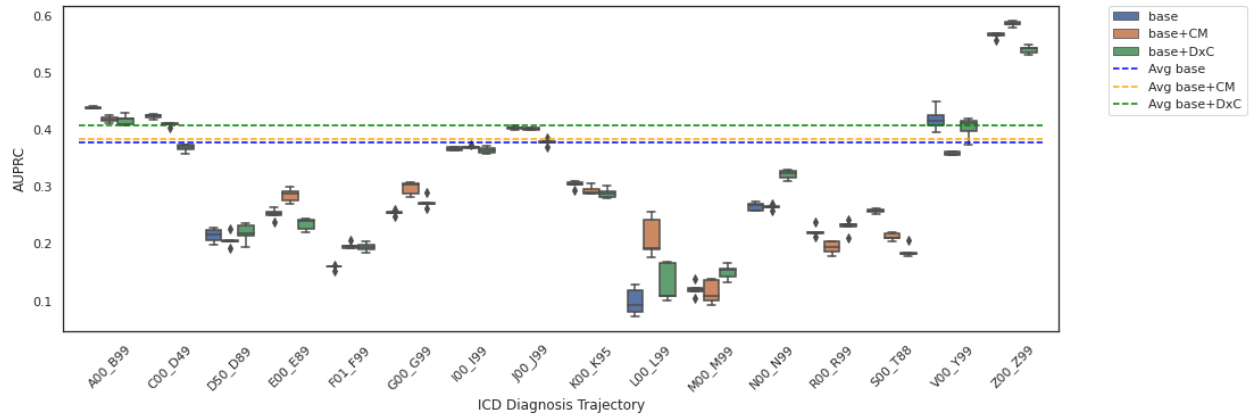
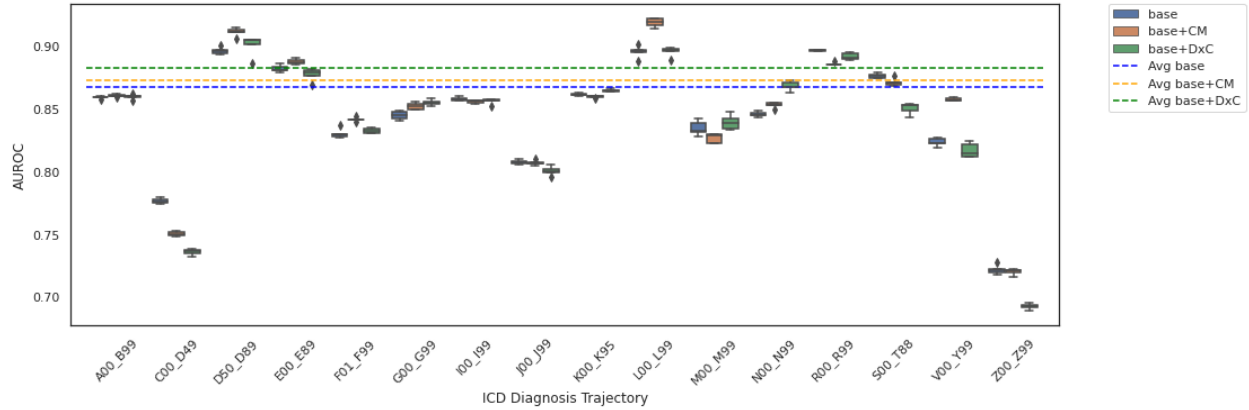
Supplementary Materials



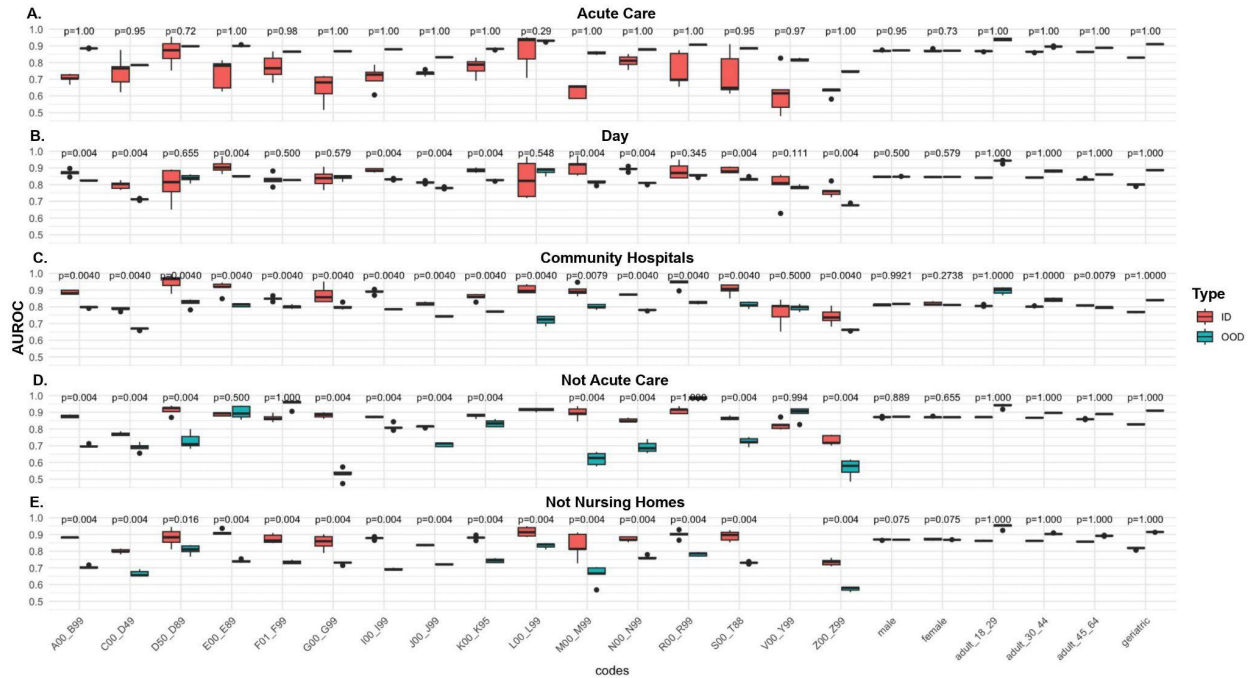
Supplementary Figure 1. Mortality decompensation prediction in general internal medicine (GIM). Model predicts whether patients' health deteriorates and results in hospital mortality within the next 2 weeks, every 24 hours of a GIM stay.



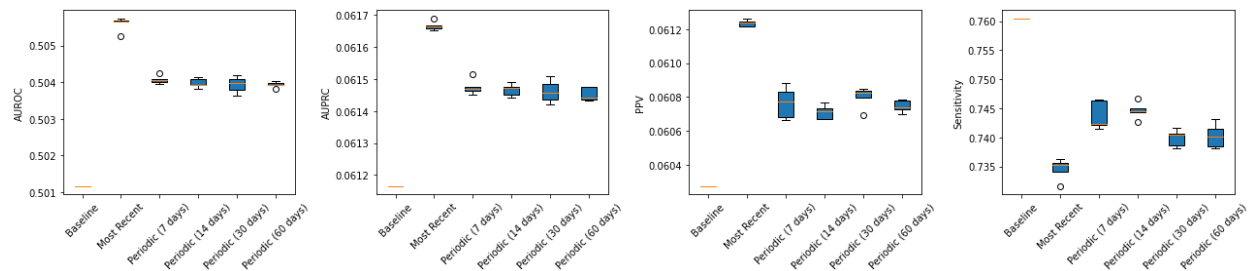
Supplementary Figure 2. Distribution of diagnosis codes across factors influencing health status and contact with health services (Z00-Z99).



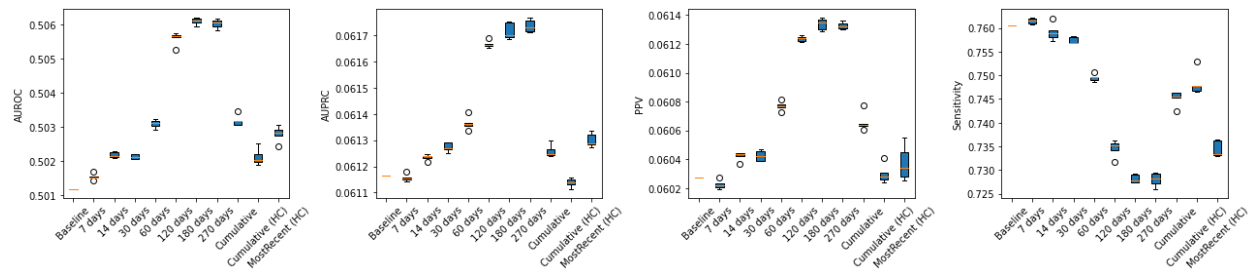
Supplementary Figure 3. Performance of model using no prior information (base), comorbidities (base+CM) and ICD-10 diagnosis codes (base+DxC) across diagnosis codes measured using AUROC and AUPRC. The dotted line represents the average performance for each respective model, across all groups of ICD-10 diagnosis codes.



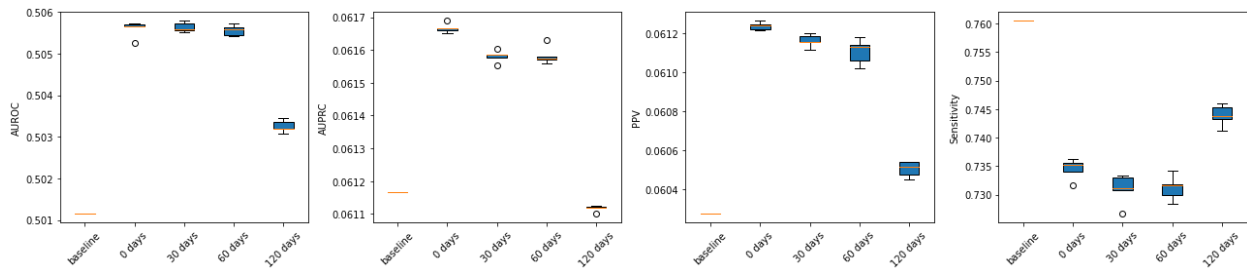
Supplementary Figure 4. AUROC for in-distribution (ID) and out-of-distribution (OOD) data, across ICD-10 diagnosis codes, age and sex, for scenarios where harmful data shifts were detected: **(A)** model trained on patients admitted from acute care institutions **(B)** model trained on patients admitted during the day **(C)** model trained on patients admitted from community hospitals **(D)** model trained on patients admitted not from acute care institutions **(E)** model trained on patients not admitted from nursing homes. P-values were calculated using a one-sided Mann-Whitney U test.



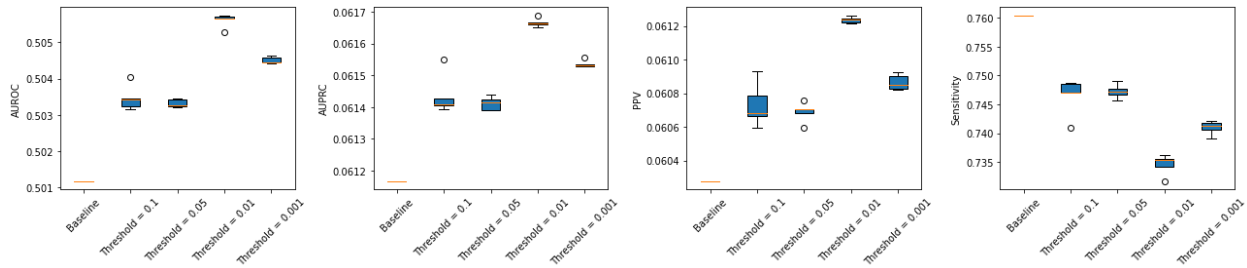
Supplementary Figure 5. Comparison of AUROC, AUPRC, PPV, and sensitivity when updating periodically every $n = 7, 14, 30,$ and 60 days.



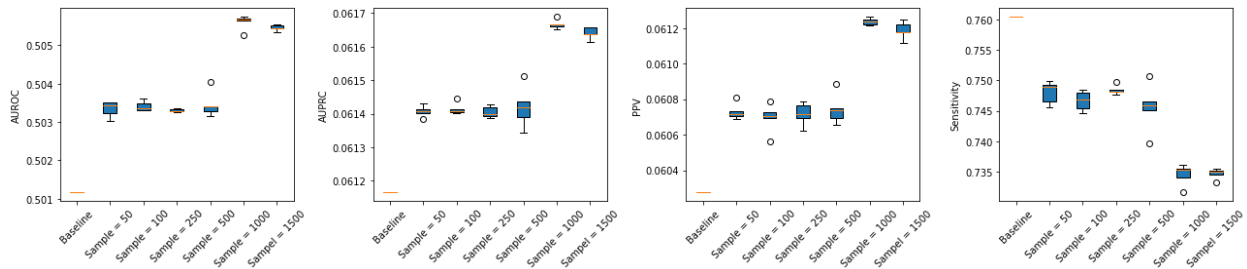
Supplementary Figure 6. Comparison of AUROC, AUPRC, PPV, and sensitivity across strategies retraining using a dynamic window of the most recent encounters ($n = 7, 14, 30, 60, 120, 180, 270$ days) and cumulatively.



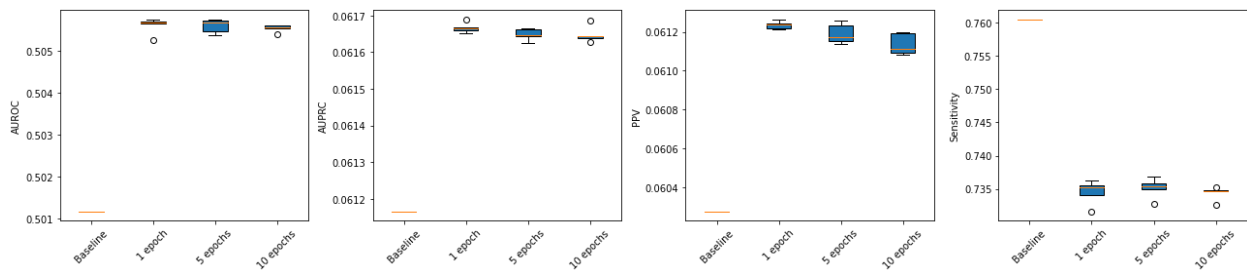
Supplementary Figure 7. Comparison of AUROC, AUPRC, PPV, and sensitivity across increasing lookback windows ($n = 0, 30, 60, 120$ days).



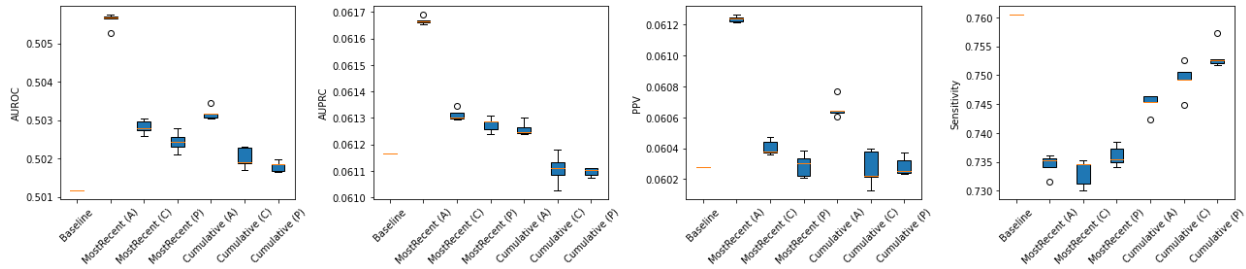
Supplementary Figure 8. Comparison of AUROC, AUPRC, PPV, and sensitivity across varying drift p-value thresholds for retraining ($p = 0.1, 0.05, 0.01, 0.001$).



Supplementary Figure 9. Comparison of AUROC, AUPRC, PPV, and sensitivity across varying sample sizes for drift tests ($n = 50, 100, 250, 500, 1000, 1500$).



Supplementary Figure 10. Comparison of AUROC, AUPRC, PPV, and sensitivity across varying epochs for retraining ($n = 1, 5, 10$).



Supplementary Figure 11. Comparison of AUROC, AUPRC, PPV, and sensitivity when updating using the most recent and cumulative retraining strategy with all encounters (A), correctly predicted encounters (C) or positively predicted encounters (P).

Feature Type	# of Features	Features
Administrative	16	sex, age, prev_encounter_count, triage_level_emergent, triage_level_no_info, triage_level_non-urgent, triage_level_resuscitation, triage_level_semi-urgent, triage_level_urgent, readmission_new_to_acute, readmission_nota, readmission_planned_from_acute, readmission_unplanned_7_day_acute, readmission_unplanned_7_day_day_surg, readmission_unplanned_8_to_28_day_acute, from_nursing_home_mapped, from_acute_care_institution_mapped
Interventions	6	unmapped_intervention, inv_mech_vent_mapped, endoscopy_mapped, dialysis_mapped, surgery_mapped, interventional
Labs	55	albumin, alp, alt, aptt, arterial_paco2, arterial_pao2, arterial_ph, ast, bicarbonate, bilirubin, blood_urea_nitrogen, calcium, calcium_ionized, creatinine, crp, d-dimer, esr, ferritin, fibrinogen, glucose_fasting, glucose_point_of_care, glucose_random, hba1c, hematocrit, hemoglobin, high_sensitivity_troponin, influenza, inr, ketone, lactate_arterial, lactate_venous, ldh, lipase, lymphocyte, mean_cell_volume, neutrophils, other, platelet_count, potassium, pt, serum_alcohol, serum_osmolality, sodium, troponin, tsh, urinalysis, urine_osmolality, urine_sodium, urine_specific_gravity, venous_pco2, venous_ph, vitamin_b12, vitamin_d, white_blood_cell_count
Imaging Reports	5	ct, mri, x-ray, echo, ultrasound
Blood Transfusions	2	rbc, non-rbc
Comorbidities <i>(Only used in Base+CM)</i>	18	Kidney disease: N18, N19 Ischemic heart disease: I20-I52 Cerebrovascular disease: I60-69 Hypertension: I10-I15 Diabetes: E10-E13 Hyperlipidemia: E78 Hypertension: I10 Congestive heart failure: I50 Cancer: C00-D49 Dyspnea: R06 COPD: J44 Asthma: J45 Pulmonary embolism: I26 Connective tissue disease: I30-I36 Inflammatory bowel disease: K50, K51, Osteoarthritis: M15-M19

		Rheumatoid arthritis: M05-M14 HIV: B20-B24
ICD-10 Diagnosis Codes (Only used in Base+DxC)	22	Certain infectious and parasitic diseases: A00-B99 Neoplasms: C00-D49 Diseases of the blood and blood-forming organs and certain disorders involving the immune mechanism: D50-D89 Endocrine, nutritional and metabolic diseases: E00-E89 Mental, Behavioral and Neurodevelopmental disorders: F01-F99 Diseases of the nervous system: G00-G99 Diseases of the eye and adnexa: H00-H59 Diseases of the ear and mastoid process: H60-H95 Diseases of the circulatory system: I00-I99 Diseases of the respiratory system: J00-J99 Diseases of the digestive system: K00-K95 Diseases of the skin and subcutaneous tissue: L00-L99 Diseases of the musculoskeletal system and connective tissue: M00-M99 Diseases of the genitourinary system: N00-N99 Pregnancy, childbirth and the puerperium: O00-O99 Certain conditions originating in the perinatal period: P00-P96 Congenital malformations, deformations and chromosomal abnormalities: Q00-Q99 Symptoms, signs and abnormal clinical and laboratory findings, not elsewhere classified: R00-R99 Injury, poisoning and certain other consequences of external causes: S00-T88 External causes of morbidity: V00-Y99 COVID19: U07-U08 Factors influencing health status and contact with health services: Z00-Z99

Supplementary Table 1. EHR features used for mortality decompensation prediction.

Model	AUROC	AUPRC	Sensitivity	PPV
Recurrent neural network (RNN)	0.835 ± 0.0005	0.328 ± 0.0026	0.887 ± 0.0030	0.162 ± 0.0016
Gated recurrent unit (GRU)	0.838 ± 0.0013	0.344 ± 0.0030	0.865 ± 0.0067	0.177 ± 0.0008
Long short-term memory (LSTM)	0.846 ± 0.0009	0.349 ± 0.0022	0.887 ± 0.0045	0.173 ± 0.0013

Supplementary Table 2. AUROC, AUPRC, sensitivity, and PPV of the test set, for time series models including RNN, GRU and LSTM models.

Mortality	False							True						
	1(A)	2(A)	3(A)	4(C)	5(C)	6(A)	7(A)	1(A)	2(A)	3(A)	4(C)	5(C)	6(A)	7(A)
A00_B99	0.086	0.065	0.065	0.078	0.082	0.083	0.072	0.152	0.115	0.099	0.135	0.112	0.119	0.129
C00_D49	0.065	0.059	0.039	0.036	0.029	0.066	0.035	0.177	0.125	0.111	0.080	0.073	0.190	0.102
D50_D89	0.032	0.018	0.019	0.015	0.016	0.048	0.018	0.011	0.004	0.003	0.004	0.003	0.015	0.007
E00_E89	0.063	0.050	0.063	0.058	0.051	0.055	0.066	0.017	0.025	0.019	0.028	0.018	0.020	0.023
F01_F99	0.047	0.047	0.053	0.052	0.072	0.026	0.057	0.020	0.032	0.031	0.030	0.048	0.013	0.023
G00_G99	0.038	0.051	0.038	0.065	0.039	0.026	0.028	0.011	0.031	0.028	0.028	0.031	0.008	0.012
H00_H59	0.004	0.006	0.003	0.005	0.001	0.001	0.002	NA	NA	NA	NA	NA	NA	NA
H60_H95	0.006	0.006	0.004	0.012	0.009	0.006	0.006	NA	NA	NA	NA	NA	NA	NA
I00_I99	0.101	0.147	0.143	0.138	0.219	0.138	0.131	0.103	0.211	0.165	0.175	0.249	0.119	0.158
J00_J99	0.127	0.132	0.144	0.130	0.106	0.137	0.163	0.217	0.238	0.175	0.256	0.229	0.197	0.258
K00_K95	0.108	0.103	0.118	0.059	0.046	0.106	0.094	0.051	0.081	0.079	0.048	0.039	0.085	0.064

L00_L99	0.028	0.026	0.029	0.024	0.021	0.022	0.022	0.003	0.005	0.003	0.004	0.006	0.004	0.001
M00_M99	0.044	0.041	0.049	0.053	0.036	0.036	0.043	0.009	0.008	0.011	0.011	0.007	0.006	0.006
N00_N99	0.059	0.066	0.062	0.076	0.085	0.057	0.063	0.025	0.042	0.030	0.054	0.057	0.035	0.039
O00_O99	0.002	0.001	0.001	0.003	0.001	0.000	0.001	NA	NA	NA	NA	NA	NA	NA
Q00_Q99	NA	NA	NA	NA	NA	NA	NA	NA	NA	NA	NA	NA	NA	NA
R00_R99	0.094	0.134	0.120	0.113	0.116	0.142	0.129	0.019	0.030	0.028	0.011	0.030	0.036	0.035
S00_T88	0.074	0.038	0.041	0.072	0.061	0.036	0.059	0.027	0.023	0.016	0.033	0.031	0.016	0.018
V00_Y99	0.002	0.002	0.004	0.005	0.003	0.003	0.004	0.004	0.003	0.004	0.013	0.011	0.005	0.009
Z00_Z99	0.020	0.008	0.004	0.006	0.005	0.011	0.008	0.156	0.027	0.197	0.089	0.054	0.131	0.117

Supplementary Table 3. Proportion of patient encounters across ICD-10 diagnosis codes, hospital and mortality status. Values for groupings of diagnosis codes with < 5 patient encounters have been omitted due to privacy preserving practices required by GEMINI. A = academic hospital, C = community hospital.

Mortality	False							True						
	Hospital	1(A)	2(A)	3(A)	4(C)	5(C)	6(A)	7(A)	1(A)	2(A)	3(A)	4(C)	5(C)	6(A)
# of Encounters	16620	27394	16100	15096	22691	16238	14072	2405	2306	1589	1415	3524	1791	1808
LOS (days)	8.47	8.44	7.90	8.73	10.05	7.55	9.03	14.59	17.19	17.62	19.02	17.72	12.80	14.12
# of Previous Encounters from 2010-2020	0.72	0.60	1.19	0.68	0.60	0.82	0.90	1.28	1.12	1.53	1.36	1.16	1.31	1.63
From Acute Care (%)	2	0	1	1	0	1	1	7	1	1	3	0	1	0
From Nursing Home (%)	6	8	4	11	12	4	10	13	18	14	31	30	8	22
Palliative Care (n)	260	151	50	52	39	160	80	373	56	313	123	191	235	210

Supplementary Table 4. Patient admission and stay characteristics by hospital and mortality status. Number of patient encounters, average length of stay (LOS), average number of previous encounters from 2010-2020, percentage of patient encounters from acute care institutions, percentage of patient encounters from nursing homes, and number of patients receiving palliative care, across hospitals and mortality status. A = academic hospital, C = community hospital.

Source	Target	Metric	Base	Base + Comorbidities	Base + ICD-10 Diagnosis Codes
			Target – Source (%)	Target – Source (%)	Target – Source (%)
Community Hospitals	Academic Hospitals	AUROC	-4.0	-2.6	-0.9
		AUPRC	-6.8	-5.0	-3.2
Academic Hospitals	Community Hospitals	AUROC	-1.1	-1.8	0.0
		AUPRC	-3.2	-4.8	0.0
Excl. Winter	Seasonal Winter	AUROC	+0.7	-0.3	-1.2
		AUPRC	-0.6	+0.9	-0.1
Excl.	Seasonal	AUROC	+0.8	+1.2	+0.3

Summer	Summer	AUPRC	+1.0	+0.9	-0.3
Night Admission	Day Admission	AUROC	+1.6	-0.2	+0.2
		AUPRC	+3.0	+0.9	+2.1
Day Admission	Night Admission	AUROC	-1.9	-0.7	-0.8
		AUPRC	-5.6	-3.2	-3.7

Supplementary Table 5. Performance of models on in-distribution (source) and out-of-distribution (target) data without prior information (base), with comorbidities (base+CM) and with diagnosis codes (base+DxC) as features.