

A Predictive Autoantibody Signature in Multiple Sclerosis

Colin R. Zamecnik^{a*}, Gavin M. Sowa^{b*}, Ahmed Abdelhak^a, Ravi Dandekar^a, Rebecca D. Bair^a, Kristen J. Wade^a, Christopher M. Bartley^c, Asritha Tubati^a, Refujia Gomez^a, Camille Fouassier^a, Chloe Gerungan^a, Jessica Alexander^a, Anne E. Wapniarski^a, Rita P. Loudermilk^a, Erica L. Eggers^a, Kelsey C. Zorn^d, Kirtana Ananth^a, Nora Jabassini^a, Sabrina A. Mann^d, University of California, Nicholas R. Ragan^a, Adam Santaniello^a, Roland G. Henry^a, Sergio E. Baranzini^a, Scott S. Zamvil^a, Riley M. Bove^a, Chu-Yueh Guo^a, Jeffrey M. Gelfand^a, Richard Cuneo^a, H.-Christian von Büdingen^a, Jorge R. Oksenberg^a, Bruce AC Cree^a, Jill A. Hollenbach^{a,e}, Ari J. Green^a, Stephen L. Hauser^a, Mitchell T. Wallin^f, Joseph L. DeRisi^{d,g}, Michael R. Wilson^{a,**}

^a UCSF Weill Institute for Neurosciences, Department of Neurology, University of California, San Francisco, CA, USA

^b Department of Medicine, McGaw Medical Center of Northwestern University, Chicago, IL, USA

^c UCSF Weill Institute for Neurosciences, Department of Psychiatry and Behavioral Sciences, University of California, San Francisco, CA, USA

^d Department of Biochemistry and Biophysics, University of California, San Francisco, CA, USA

^e Department of Epidemiology and Biostatistics, University of California, San Francisco, CA USA

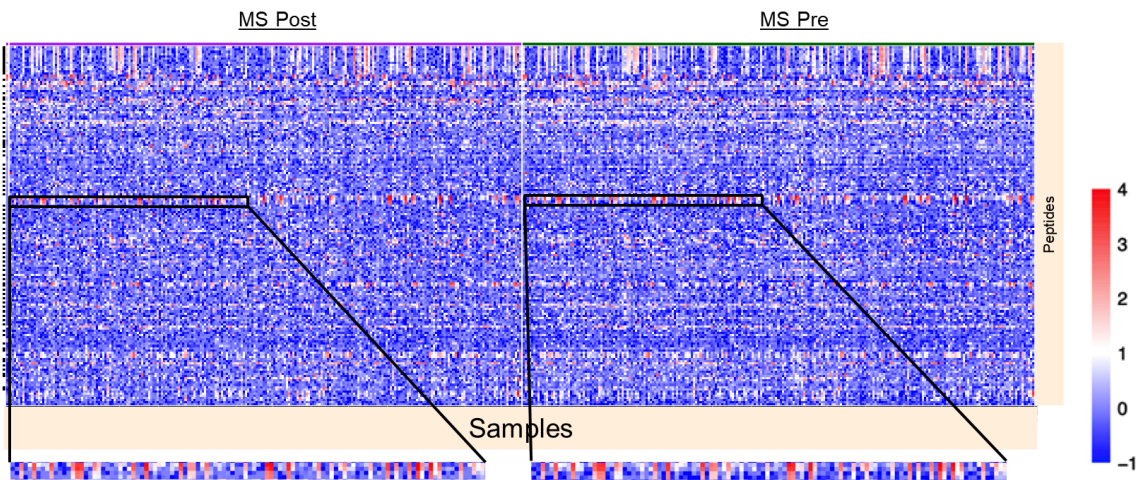
^f Veterans Affairs, Multiple Sclerosis Center of Excellence, Washington, DC and University of Maryland School of Medicine, Baltimore, MD, USA

^g Chan Zuckerberg Biohub, San Francisco, CA, USA

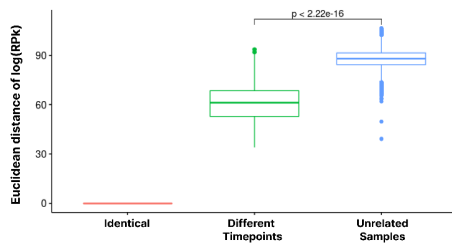
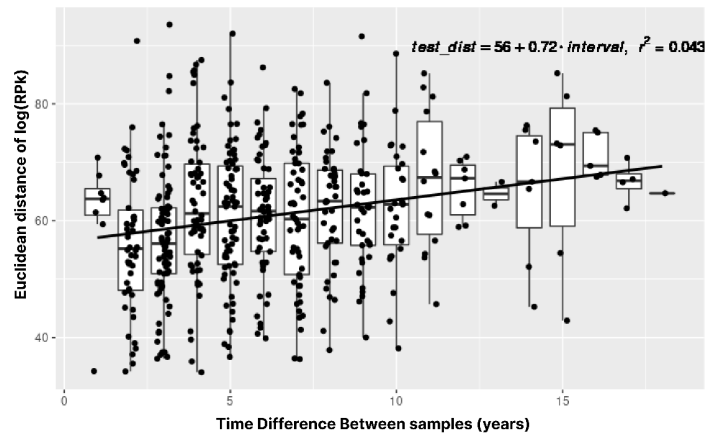
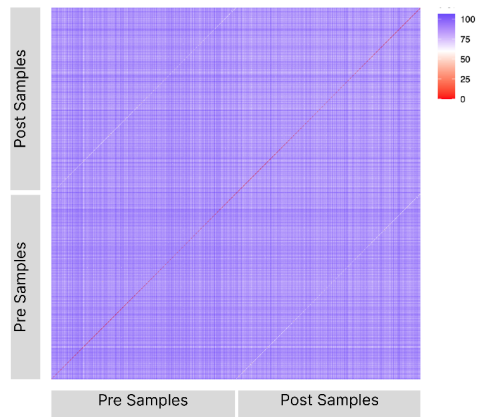
*equal contributions

**Correspondence should be addressed to Prof. Michael Wilson

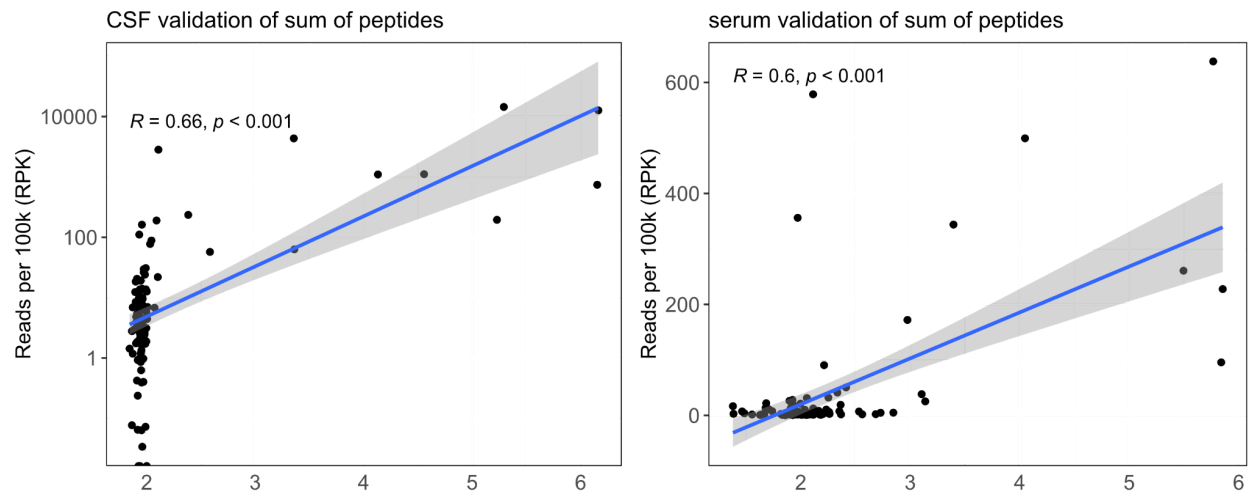
Email: Michael.Wilson@ucsf.edu



Supporting Figure 1. Heatmap of logRPK values from whole proteome PhIP-Seq data on MS patient sera from DoDSR cohort. Top peptides shown with peptide enrichment blowout to demonstrate similarity between pre and post onset sample enrichments over time.



Supporting Figure 2. (A) Unfiltered normalized read counts (rpK) were log transformed, and a correlation matrix was computed using the Euclidean distance measure. The similarity between any two samples was defined by their n-dimensional Euclidean distance, where each peptide in the library was treated as a dimension. The rows and columns of this matrix are ordered such that the early timepoints are followed by the late timepoints. The central diagonal stripe in the heatmap represents a distance of zero where the distance was computed between the same sample. However, the diagonal stripes represent distances calculated between different timepoints of the same sample. (B) Box plots of the Euclidean distance between timepoints, with a trend towards increasing distance at longer intervals. However, patterns of self-reactivity remain stable for more than 15 years. (C) A boxplot demonstrates the significant difference in Euclidean distance between two timepoints of the same sample versus the distance between two unrelated samples.



Supporting Figure 3. Correlation of sum of MFI from all four peptides of interest in Table 4 from Luminex assay with their sum of respective normalized read counts from PhIP-Seq data in both CSF and serum samples from ORIGINS cohort.