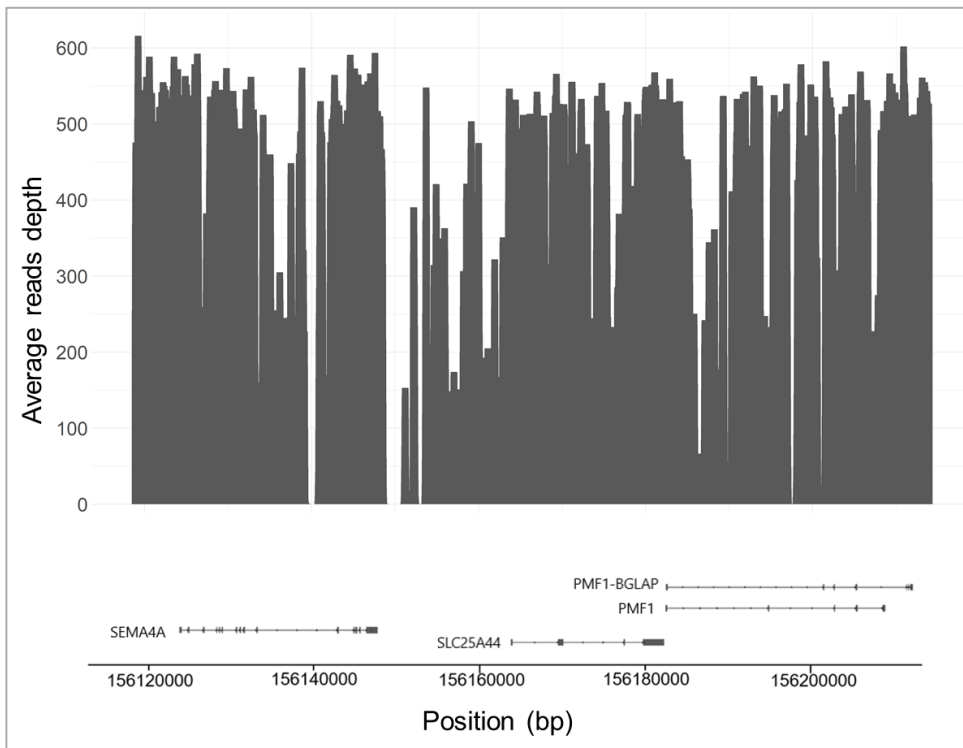
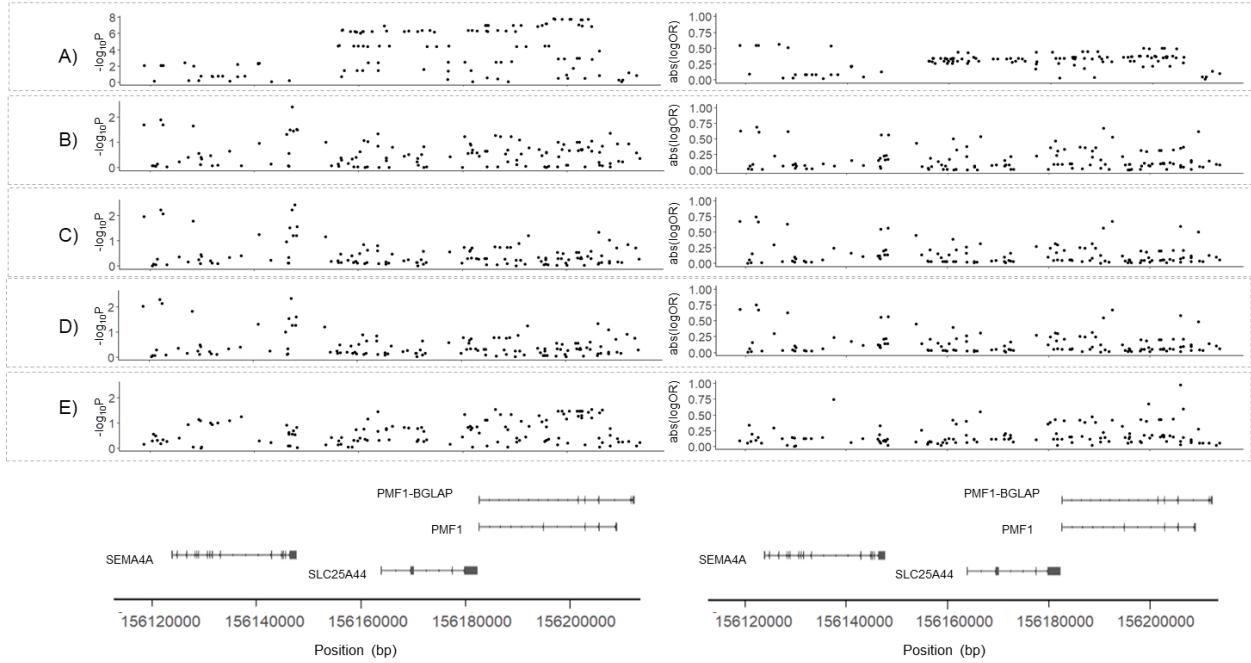


## Supplementary Material

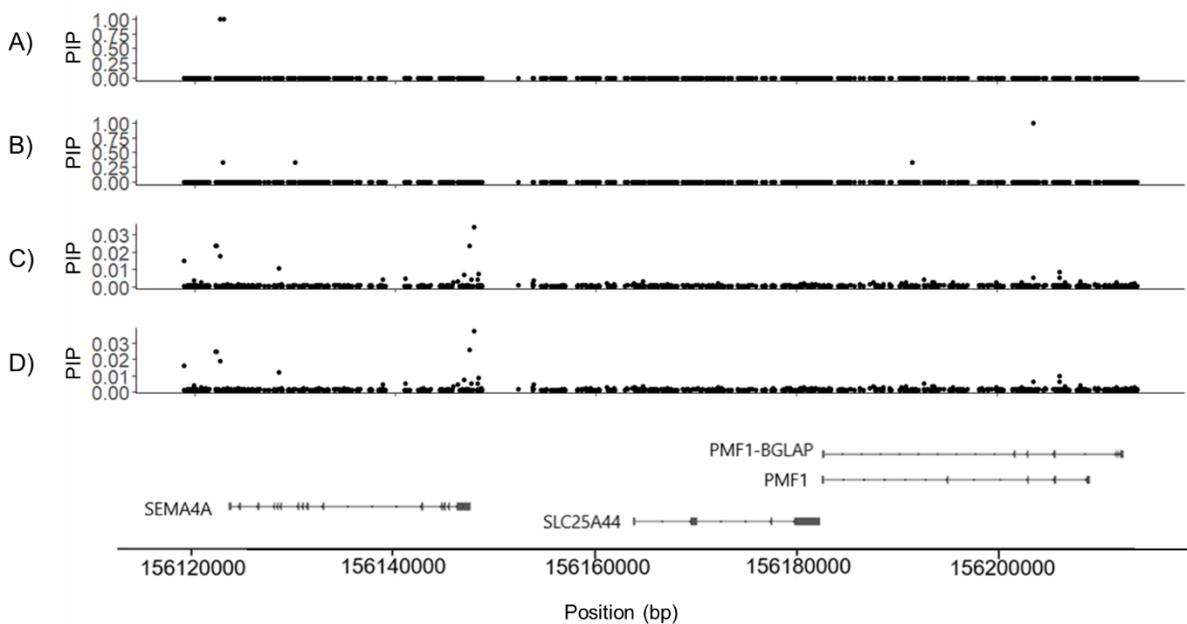
**Supplementary Figure S1.** *Iq22* coverage analysis results. Average reads depth was calculated for each sample at each sequenced position. All the samples were characterized by low coverage, detected in a 1.6 kb region falling in an intronic region of *SEMA4A* gene (chr1:156,139,280 - 156,140,732) and in an intergenic region between *SEMA4A* and *SLC25A44* genes(chr1:156,147,543-156,163,730). Since affecting the entire cohort, it was considered as a technical bias.



**Supplementary Figure S2.** P-values (left panel) and absolute  $\text{abs}(\log\text{OR})$  (right panel) of non-lobar ICH vs controls in meta-analysis by Woo et al (A) were compared with those resulting from Firth regression comparing non-lobar vs controls (B), non-lobar vs lobar and controls (C), non-lobar vs lobar and controls, adjusted for population stratification (D), lobar vs controls (E).



**Supplementary Figure S3.** Fine-mapping results. Posterior Inclusion Probabilities (PIPs) are reported for PAINTOR (A), SuSIE (B), FINEMAP (C) and Caviar (D) analyses.



**Supplementary Table 1.** Variants used as genetic instruments in MVMR analyses are reported with correspondent betas (relative to effect alleles) and standard errors (SE).

SNP	Effect allele	Other allele	Beta nonlobarICH	SE nonlobarICH	Beta <i>SEMA4A</i>	SE <i>SEMA4A</i>	Beta <i>SLC25A44</i>	SE <i>SLC25A44</i>	Beta <i>PMF1</i>	SE <i>PMF1</i>
rs112223391	A	G	-0.29	0.07	0.35	0.01	-0.04	0.01	-0.12	0.01
rs1543294	T	C	0.04	0.07	-0.01	0.01	-0.06	0.01	0.08	0.01
rs2241106	G	C	0.06	0.07	0.30	0.01	0.01	0.01	0.02	0.01
rs56410778	C	T	-0.04	0.23	0.38	0.03	-0.03	0.03	-0.15	0.04
rs72710255	G	A	0.08	0.09	0.10	0.01	0.01	0.01	0.02	0.01
rs4661035	G	A	-0.04	0.23	0.19	0.03	0.00	0.03	-0.04	0.03
rs16837430	A	T	-0.01	0.09	-0.07	0.01	-0.02	0.01	0.00	0.01
rs73006728	A	G	-0.54	0.21	-0.15	0.02	-0.07	0.02	-0.07	0.03
rs2985714	A	G	0.25	0.10	0.08	0.01	0.00	0.01	0.02	0.02
rs28662267	C	T	-0.08	0.07	-0.05	0.01	0.00	0.01	0.00	0.01
rs2075163	G	T	0.02	0.18	0.12	0.02	-0.08	0.02	-0.04	0.02
rs72704176	T	C	-0.11	0.24	-0.18	0.03	-0.06	0.03	-0.03	0.04
rs1800247	C	T	-0.13	0.07	0.01	0.01	-0.07	0.01	-0.04	0.01