

The influence of highly effective modulator therapies on the sputum proteome in cystic fibrosis

Rosemary E Maher¹, Peter J Barry², Edward Emmott¹, Andrew M Jones^{2,3},

Lijing Lin⁴, Paul S McNamara⁵, Jaclyn A Smith^{3,6}, Robert W Lord^{3,4,*}

1. Centre for Proteome Research, Institute of Systems, Molecular and Integrative Biology, University of Liverpool, Liverpool, L69 7ZB, UK

2. Manchester Adult CF Centre, Manchester University NHS Foundation Trust, Southmoor Road, Wythenshawe, Manchester M23 9LT

3. Division of Infection, Immunity and Respiratory Medicine, University of Manchester, Manchester, M13 9PL

4. Faculty of Biology, Medicine and Health, University of Manchester, M13 9PL

5. Department of Child Health (University of Liverpool), Institute in the Park, Alder Hey Children's Hospital, Eaton Rd, Liverpool, L12 2AP

6. Department of Respiratory Medicine, Manchester University NHS Foundation Trust, Southmoor Road, Wythenshawe, Manchester M23 9LT

*** Corresponding author**

Corresponding author: Robert Lord, Manchester Adult CF Centre, Manchester University NHS Foundation Trust, Southmoor Road, Wythenshawe, Manchester M23 9LT.

Email: robert.lord@mft.nhs.uk

Supplementary methods

Sputum processing

Sputum samples were thawed and weighed after which four times the weight of 0.1% (w/v) (6.5mM) dithiothreitol (DTT), dissolved in 0.01 M phosphate-buffered saline, was added. The mixture was vortexed vigorously for 30 s before incubating for 30 minutes on a roller mixer at room temperature. The samples were vortexed for 30 s every 10 minutes during this time. Samples were centrifuged at 450 g at 4 °C for 10 minutes and the supernatant fraction was transferred to low protein binding microfuge tubes and re-centrifuged at 16,000 g for 30 minutes at 4 °C. The liquid fractions were removed and combined. Processed sputum samples were aliquoted and stored at -80 °C.

Proteomics

Sputum samples were diluted in 25 mM ammonium bicarbonate (AmBic) to a final volume of 160 µL where samples had a total protein concentration of 0.16 µg/µL. Samples were treated with a 1% (w/v) solution of RapiGest™ SF Surfactant (Waters) to a final concentration of 0.05% (w/v) before incubation at 80 °C for 10 minutes. Disulfide bonds were reduced by the addition of DTT during sputum processing, so an additional 10 µL of 25mM AmBic was added. Iodoacetamide (IA) was added to a final concentration of 9 mM to alkylate the free sulfhydryl groups on the cysteine residues. After incubation for 30 minutes at room temperature in the dark trypsin was added to a 50:1 protein: protease ratio and incubated overnight at 37 °C. Digestion was stopped by the addition of trifluoroacetic acid (TFA) to a final concentration of 0.5% (v/v) and incubated for 45 minutes at 37 °C. The samples were centrifuged to remove particulates for 15 minutes up to 13,000 g. Off-line desalting was performed using C18

trap columns, (Evotips, Evosep) as per the manufactures protocol. Peptides were eluted using acetonitrile 60% (v/v) with 0.1% (v/v) formic acid (FA), dried down using a SpeedVac and suspended in 200 μ L 973. The samples were then subject to LC-MS/MS analysis. Peptides were analysed by LC-MS/MS using an Ultimate 3000 nano system (Dionex/Thermo Fisher Scientific, Hemel Hempstead, UK) coupled to QExactive-HF mass spectrometer (Thermo Fisher Scientific, Hemel Hempstead, UK) to acquire the masses of peptides derived from proteins extracted from the sputum samples. Peptides were loaded onto a trap column (50cm) (Acclaim PepMap 100) at 12 μ L/min over 7 min with an aqueous solution containing 0.1% (v/v) TFA and 2% (v/v) MeCN. The trap column was set in-line with an analytical column (Easy-Spray PepMap® RSLC) (Dionex). Peptides were eluted by applying a linear gradient of 3.8% to 50% solvent B (acetonitrile 80% (v/v) with 0.1% (v/v) FA) over 35 min at 300 nL/min. Solvent A was HPLC grade water with 0.1% (v/v) formic acid. The mass spectrometer was operated in data dependent positive (ESI+) mode and full scan MS spectra (300-2000 m/z) were acquired in the Orbitrap. The 16 most intense multiply charged ions ($z \geq 2$) were sequentially isolated and fragmented in the octopole collision cell by high energy collisional dissociation (HCD) and detected in the Orbitrap.

Protein analysis

The total protein concentration of sputum varied considerably, samples were therefore normalised to a fixed total protein concentration prior to alkylation and tryptic digestion. Data analysis including run alignment and peak picking was carried out in Progenesis QI for Proteomics v4 (Nonlinear Dynamics), while database searching was carried out by MASCOT search engine (Matrixscience version 2.6). Samples were searched against a database comprised of all reviewed human sequences in the UniProt Human

database (20,356 sequences; updated 12/08/2020) using trypsin as the specified enzyme, carbamidomethylation of cysteine as fixed modification, methionine oxidation as variable modification and one trypsin missed cleavage, precursor and fragment ion error tolerances were set to 10 ppm and 0.01 Da, respectively. The false discovery rate (FDR) was calculated using the decoy database tool in MASCOT. Only those proteins identified with an FDR <1% were accepted.

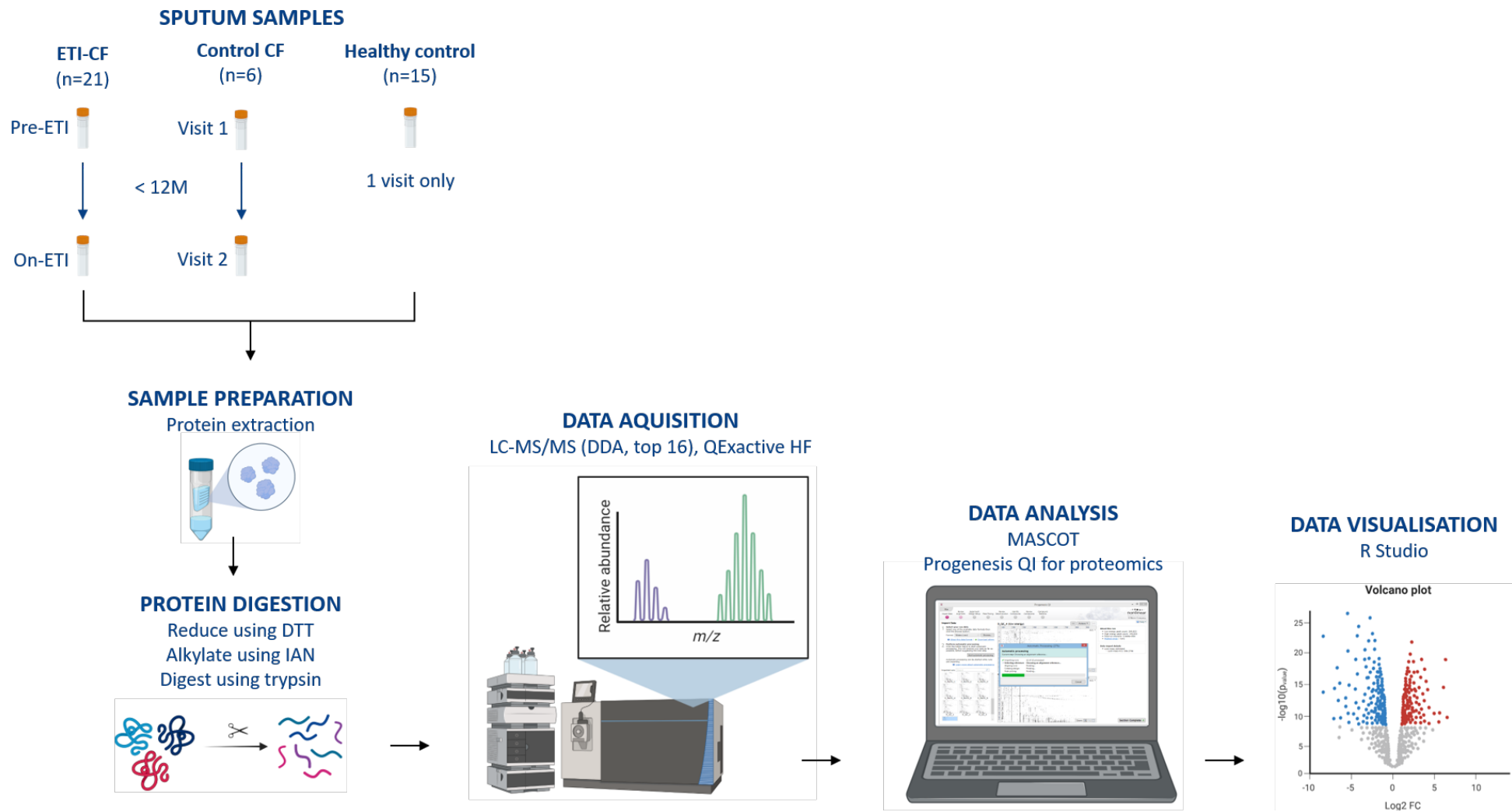
Table E1 Individual clinical and demographic characteristics of CF participants

ID	Stratum	Time on therapy at repeat sampling	Baseline modulator	Gender	Gene1	Gene2	Pancreatic status	Ps	BCC	Baseline FEV1	Baseline FEV1%	V2 FEV1	V2 FEV1 %
2227	ETI	56	Tez/lva	F	F508del	F508del	Insufficient	Yes	Yes	2.34	64	2.74	75
2420	ETI	130	None	F	F508del	R792X	Insufficient	Yes	No	1.7	61	2.05	74
2511	ETI	39	Lum/lva	M	F508del	F508del	Insufficient	Yes	No	2.01	52	2.5	64
2833	ETI	220	Tez/lva	F	F508del	F508del	Insufficient	Yes	Yes	1.26	46	1.28	47
3125	ETI	235	Tez/lva	M	F508del	F508del	Insufficient	Yes	No	2.77	67	2.92	70
3452	ETI	254	None	M	F508del	1154insTC	Insufficient	Yes	No	1.9	44	2.51	59
4763	ETI	93	None	M	F508del	2711delT	Insufficient	No	Yes	2.35	58	3.08	76
5076	ETI	189	None	F	F508del	17171G>A	Insufficient	Yes	No	3.09	89	3.68	106
5117	ETI	246	Tez/lva	M	F508del	F508del	Insufficient	Yes	Yes	2.77	68	3.61	90
5268	ETI	252	Tez/lva	M	F508del	F508del	Insufficient	Yes	No	2.19	58	2.81	75
5270	ETI	161	Tez/lva	F	F508del	F508del	Insufficient	Yes	No	1.79	59	1.67	55
5369	ETI	103	Tez/lva	F	F508del	F508del	Insufficient	Yes	No	3.59	102	3.93	112
6013	ETI	189	Lum/lva	F	F508del	F508del	Insufficient	Yes	No	2.62	77	3.06	91
6018	ETI	49	None	F	F508del	R553X	Insufficient	Yes	No	1.84	65	2.49	88
6021	ETI	194	None	F	F508del	3659delC	Insufficient	Yes	No	1.6	54	1.8	61
6054	ETI	139	None	M	F508del	2184delA	Insufficient	Yes	No	1.35	33	1.9	47
6063	ETI	259	Tez/lva	M	F508del	F508del	Insufficient	Yes	No	2.46	63	3.27	85
6067	ETI	310	Tez/lva	M	F508del	F508del	Insufficient	Yes	No	2.52	54	2.94	63
6092	ETI	92	Tez/lva	F	F508del	F508del	Insufficient	Yes	No	2.64	77	3.44	100
6127	ETI	128	None	M	F508del	W1098R	Insufficient	Yes	No	3.25	74	4.39	100
6131	ETI	79	None	M	F508del	F508del	Insufficient	Yes	No	3.19	76	No data	No data
2541	Control	N/A	None	M	1154insTC	2118delAACT	Insufficient	Yes	No	2.56	74	2.59	75
2587	Control	N/A	None	M	I507del	2711delT	Insufficient	Yes	No	2.37	66	2.5	69

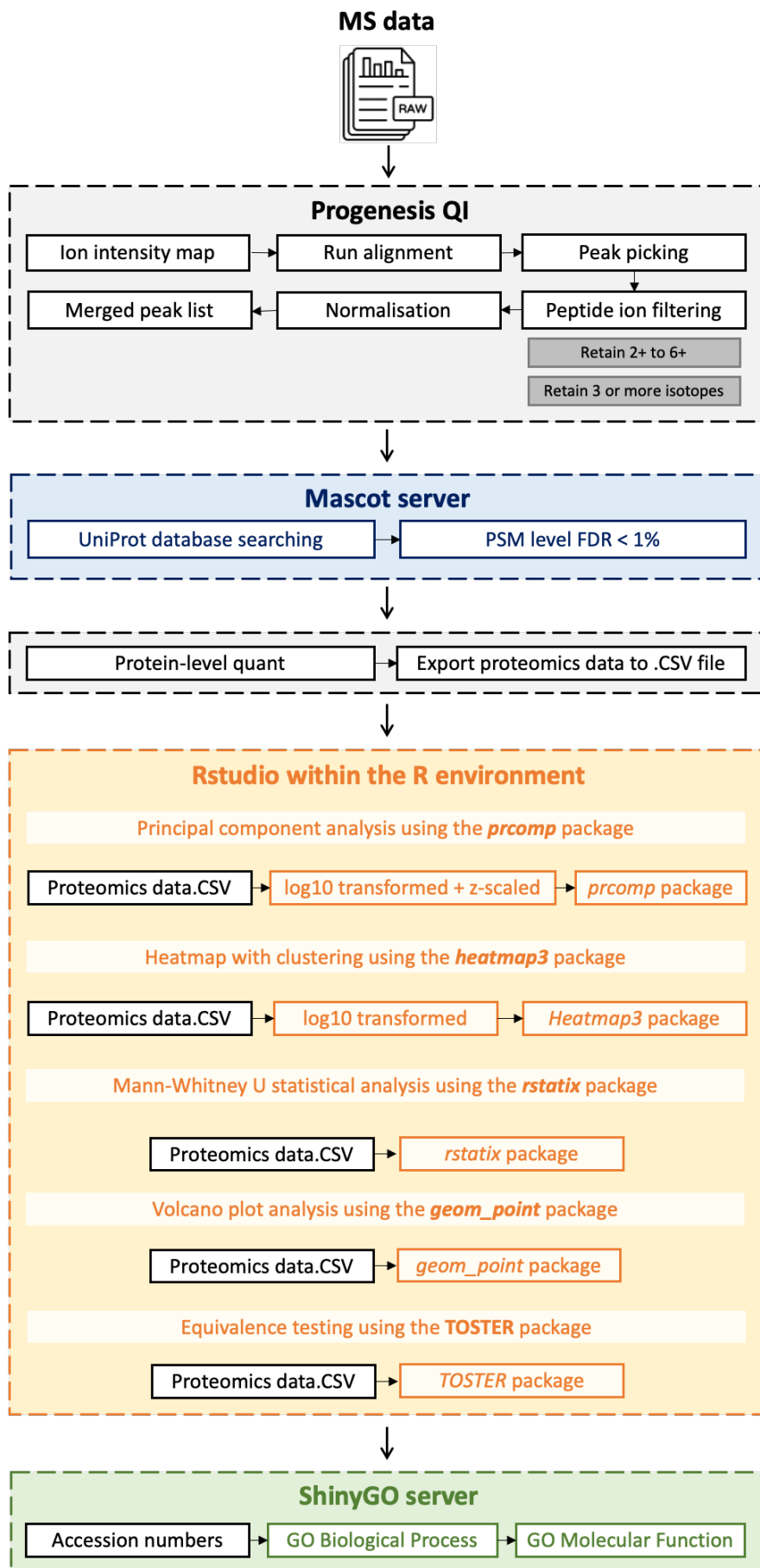
ID	Stratum	Time on therapy at repeat sampling	Baseline modulator	Gender	Gene1	Gene2	Pancreatic status	Ps	BCC	Baseline FEV1	Baseline FEV1%	V2 FEV1	V2 FEV1 %
2896	Control	N/A	None	M	R334W	R75X	Sufficient	No	No	3.74	72	3.5	68
2937	Control	N/A	None	M	L218X	L218X	Insufficient	Yes	No	2.75	71	2.86	75
3257	Control	N/A	None	F	R553X	Q493X	Insufficient	Yes	No	1.48	50	1.63	56
6303	Control	N/A	None	M	R553X	R1162X	Insufficient	No	No	1.75	40	1.54	35

Abbreviations: Percent predicted FEV1 (FEV1%), M (male), F(female), ivacaftor (iva), lumacaftor (lum), tezacaftor (tez)

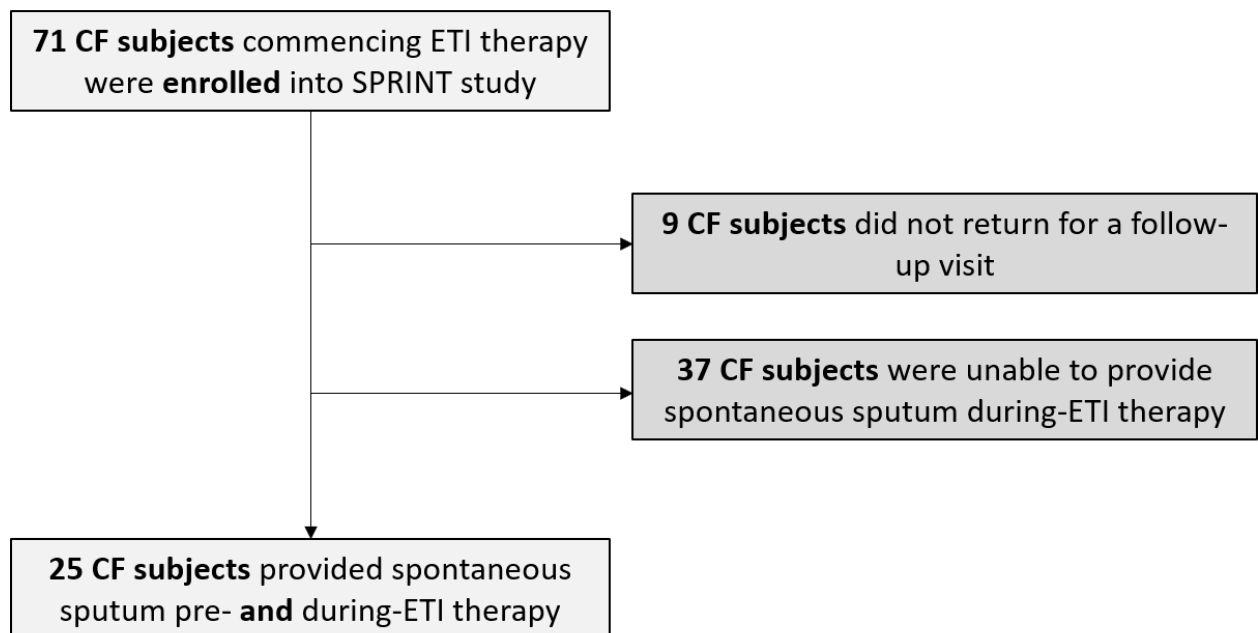
Fully anonymised Study IDs were provided that cannot be identified outside the research group.



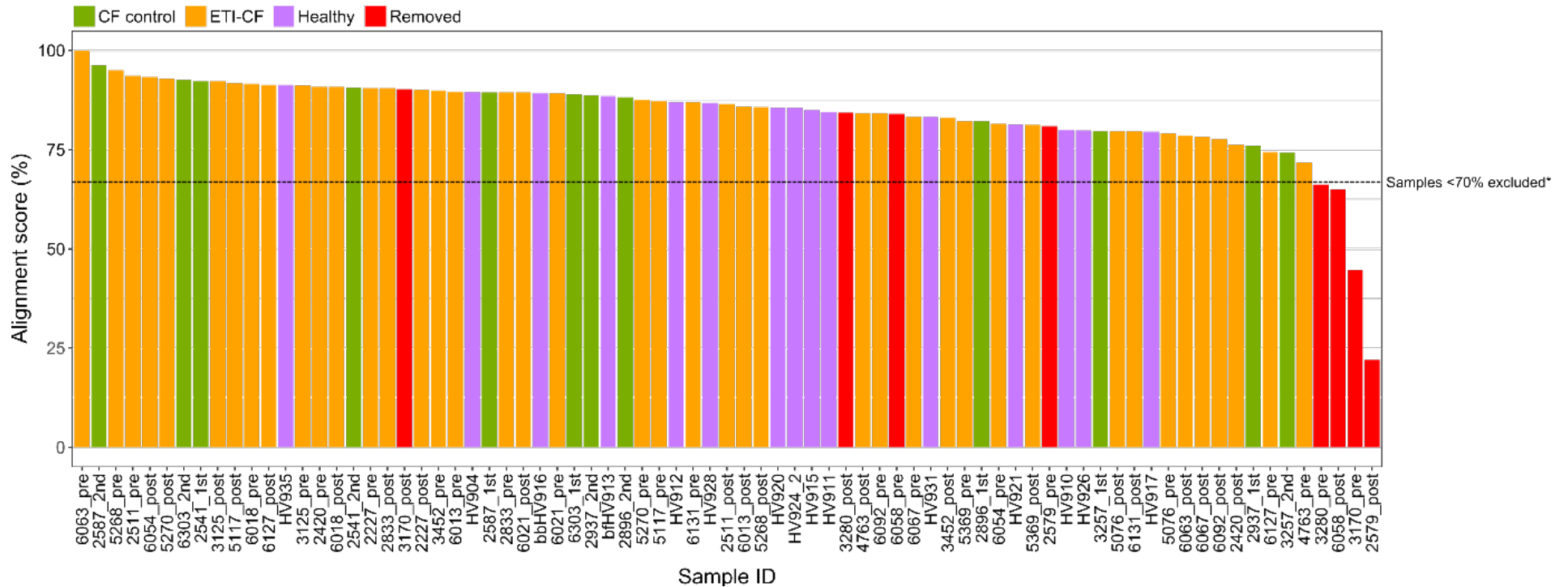
Supplementary Figure 1. Workflow diagram.



Supplementary Figure 2. Bioinformatics workflow.

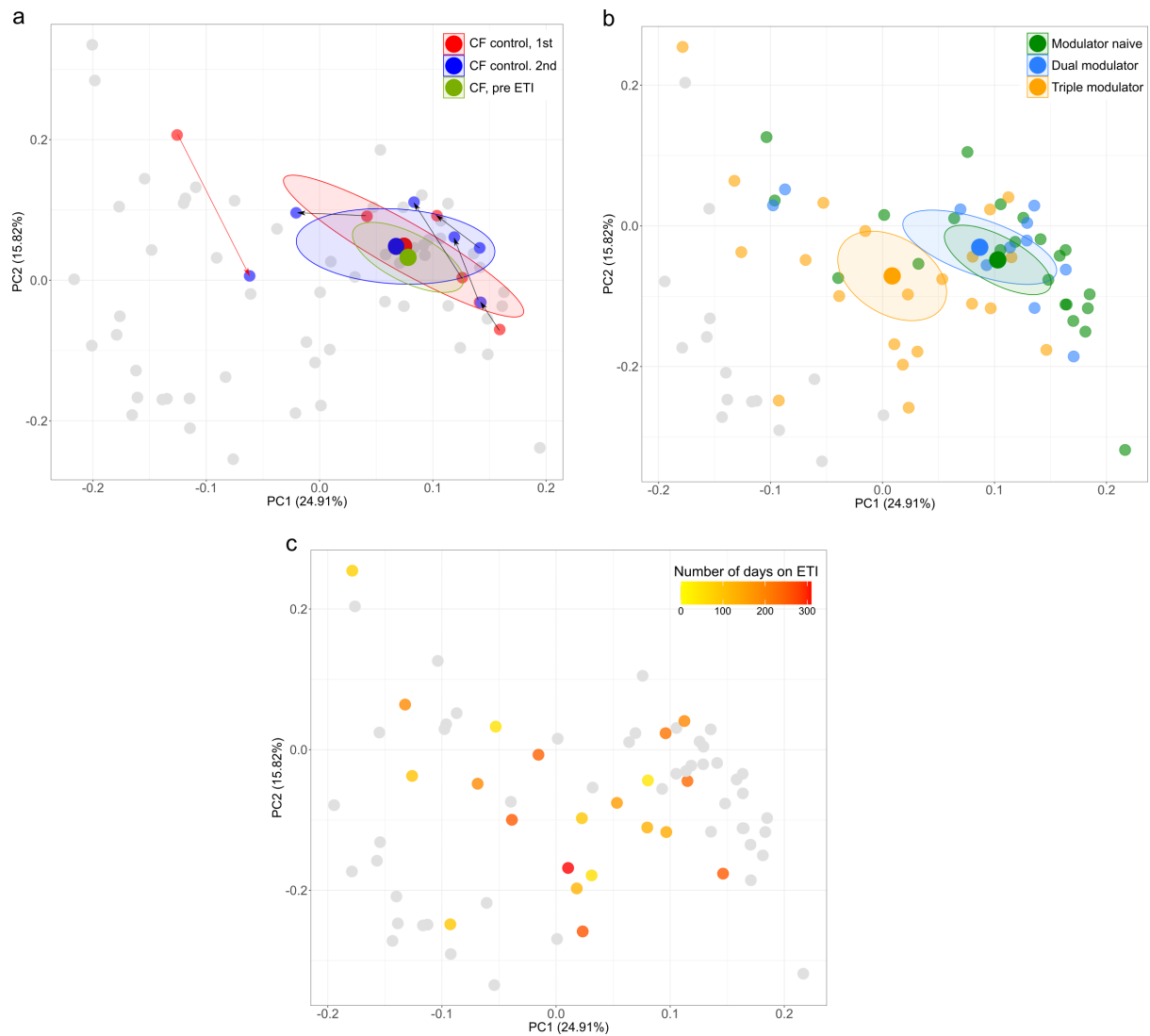


Supplementary Figure 3, Consort diagram for recruited patients

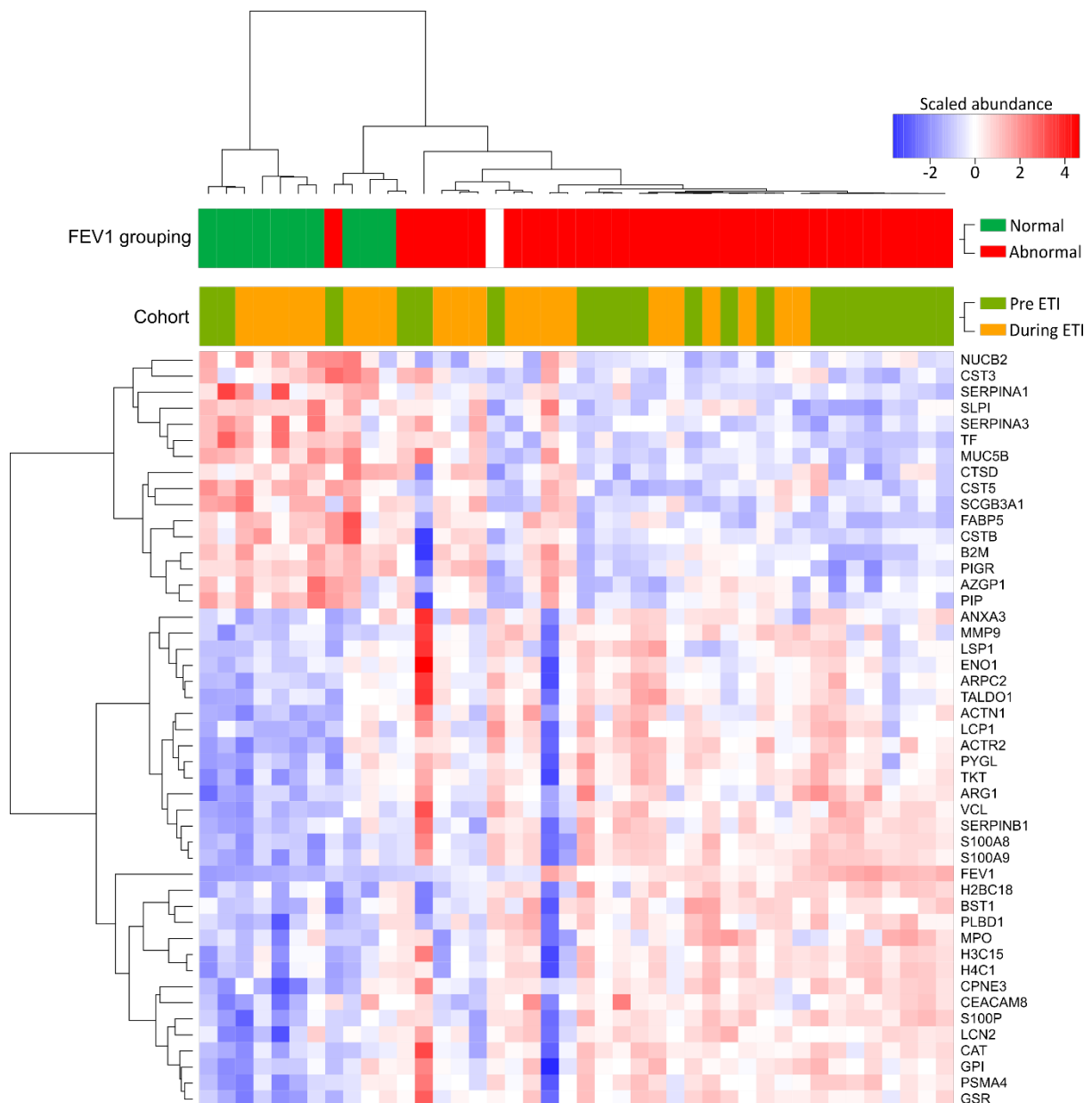


Supplementary Figure 4. Sample Alignment.

For each sample Progenesis Q1 performed automatic sample alignment, providing an alignment score presented as a percentage of matchable peaks that are matched to the reference run (6063_pre). The bar chart above presents the alignment score for each sample in the analysis, colour coded based on cohort; CF control (green), ETI-CF (orange) and healthy (purple). Samples with an alignment score of < 70%, *along with their paired sample (i.e. both pre and post ETI) were removed from the analysis and are highlighted in red.



Supplementary Figure 5. Principal component analysis of sputum protein profiles. Principal component analysis of 446 core sputum proteins. A centroid marker (large dot) with 95 % confidence ellipse was calculated where appropriate. (A) PCA of longitudinal CF controls not eligible for ETI. Lines indicate movement of paired samples. (B) Plot of baseline modulator status. (C) PCA colour coded by the number of days on ETI.



Supplementary Figure 6. Hierarchical clustering using the proteins with the greatest discrimination between pre and post ETI (PC1). Pre- and post- ETI sputum samples were clustered and displayed in a heatmap, onto which is projected the scaled abundance for the top 10% proteins that contributed to PC1 separation, clinical cohort and FEV1 grouping. *Definition of abbreviations:* AZGP1 = Zinc-alpha-2-glycoprotein, PIP = Prolactin-inducible protein, FABP5 = Fatty acid-binding protein 5, CSTB = Cystatin-B, B2M = Beta-2-microglobulin, PIGR = Polymeric immunoglobulin receptor, SCGB3A1 = Secretoglobulin family 3A member 1, CTSD = Cathepsin D, CST5 = Cystatin-D, NUCB2 = Nucleobindin-2, CST3 = Cystatin-C, SERPINA1 = alpha-1-antiproteinase, TF = Serotransferrin, SERPINA3 = Alpha-1-antichymotrypsin, SLPI = Antileukoproteinase, MUC5B = Mucin-5B, CPNE3 = Copine-3, CEACAM8 = Carcinoembryonic antigen-related cell adhesion molecule 8, S100P = Protein S100-P, LCN2 = Neutrophil gelatinase-associated lipocalin, BST1 = ADP-ribosyl cyclase/cyclic ADP-ribose hydrolase 2, ADP-ribosyl cyclase/cyclic ADP-ribose hydrolase 2, PLBD1 = Phospholipase B-like-1, H2BC18 = Histone H2B type 2-F, MPO = Myeloperoxidase, H3C15 = Histone H3.2, H4C1 = Histone H4, MMP9 =

Matrix metalloproteinase-9, ACTR2 = Actin-related protein 2, ACTN1 = Alpha-actinin-1, LCP1 = Plasyin-2, VCL = Vinculin, SERPINB1 = Leukocyte elastase inhibitor, S100A8 = Protein S100-A8 , S100A9 = Protein S100-A9, LSP1 = Lymphocyte-specific protein 1, ENO1 = Alpha-enolase, ARPC2 = Actin-related protein 2/3 complex subunit 2, TALDO1 = Transaldolase, ANXA3 = Annexin-3, GSR = Glutathione reductase, CAT = Catalase, ARG1 = Arginase-1, PYGL = Glycogen phosphorylase, GPI = Glucose-6-phosphate isomerase, PSMA4 = Proteasome subunit alpha type-4 and TKT = Transketolase.

Table E2 Proteins showing a significant correlation (unadjusted p value <0.05) using Mann Whitney

Protein	Post	Pre	fold change	p	p.adj
Polymeric immunoglobulin receptor	4271443 1.1	1564178 6.9	2.73	9.54 E-07	2.13 E-04
CD59 glycoprotein	73405.72 67	17603.80 58	4.17	9.54 E-07	2.13 E-04
Immunoglobulin heavy constant alpha 1	1176564 52	4416486 6.7	2.66	2.86 E-06	3.19 E-04
Tubulin alpha-1C chain	106334.7 42	23208.10 6	4.58	2.86 E-06	3.19 E-04
Beta-2-microglobulin	599853.0 14	248148.1 83	2.42	9.54 E-06	8.51 E-04
Putative neutrophil cytosol factor 1B	19615.69 33	5384.657 53	3.64	1.34 E-05	9.96 E-04
Proteasome subunit alpha type-7	229256.0 79	421184.3 69	0.54	2.38 E-05	1.18 E-03
Immunoglobulin lambda-like polypeptide 5	7656088. 63	5675504. 27	1.35	2.38 E-05	1.18 E-03
Complement factor B	633645.6 03	288331.2 68	2.20	2.38 E-05	1.18 E-03
Prothrombin	97008.75 14	236422.9 6	0.41	3.15 E-05	1.28 E-03
Immunoglobulin heavy constant alpha 2	1639500 6.5	5819626. 74	2.82	3.15 E-05	1.28 E-03
Galectin-3-binding protein	771924.1 42	469585.2 14	1.64	4.10 E-05	1.52 E-03
Heterogeneous nuclear ribonucleoproteins A2/B1	89141.98 81	45792.77 61	1.95	5.25 E-05	1.56 E-03
Pulmonary surfactant-associated protein A2	46756.66 86	18111.85 72	2.58	5.25 E-05	1.56 E-03

Uteroglobin	2310884. 16	361589.2 93	6.39	5.25 E- 05	1.56 E-03
Immunoglobulin J chain	1185869 0.7	4919357. 1	2.41	6.68 E- 05	1.86 E-03
Immunoglobulin kappa constant	1008837 08	5841817 8.3	1.73	8.39 E- 05	2.08 E-03
Fatty acid-binding protein 5	112991.1 25	46880.79 41	2.41	8.39 E- 05	2.08 E-03
Immunoglobulin kappa variable 3-20	355917.0 61	288344	1.23	1.05 E- 04	2.34 E-03
Cystatin-B	794464.4 05	422443.7 05	1.88	1.05 E- 04	2.34 E-03
Mucin-5AC	1268735 4.6	7077308. 19	1.79	1.31 E- 04	2.43 E-03
Prominin-1	249063.2 7	122529.6 35	2.03	1.31 E- 04	2.43 E-03
Aldehyde dehydrogenase family 3 member B1	33254.25 85	11273.97 9	2.95	1.31 E- 04	2.43 E-03
Annexin A4	23629.08 44	7327.639 78	3.22	1.31 E- 04	2.43 E-03
Vimentin	1217283. 77	694977.5 83	1.75	1.61 E- 04	2.76 E-03
14-3-3 protein beta/alpha	278799.5 87	142268.4 86	1.96	1.61 E- 04	2.76 E-03
Cytosolic non-specific dipeptidase	6610.989 73	3539.227 53	1.87	4.26 E- 04	6.55 E-03
Tubulin polymerization-promoting protein family member 3	21298.00 97	5674.629 39	3.75	4.26 E- 04	6.55 E-03
Malate dehydrogenase, mitochondrial	11617.84 8	2439.788 66	4.76	4.26 E- 04	6.55 E-03
Catalase	2349226. 96	4176357. 33	0.56	5.10 E- 04	7.11 E-03

Proteasome subunit alpha type-4	59760.60 24	101586.9 09	0.59	5.10 E- 04	7.11 E-03
Antileukoproteinase	739622.3 8	192212.8 15	3.85	5.10 E- 04	7.11 E-03
Mucin-1	41809.39 41	18792.86 63	2.22	6.07 E- 04	8.20 E-03
Histone H1.5	220514.4 34	63120.44 07	3.49	7.21 E- 04	9.46 E-03
BPI fold-containing family B member 1	2043117 9.6	1237030 5.8	1.65	1.00 E- 03	1.27 E-02
Chloride intracellular channel protein 1	282768.0 28	179994.5 05	1.57	1.18 E- 03	1.38 E-02
Ezrin	88782.26 78	55372.63 89	1.60	1.18 E- 03	1.38 E-02
WAP four-disulfide core domain protein 2	2632026. 69	1347007. 52	1.95	1.18 E- 03	1.38 E-02
Olfactomedin-4	225513.7 04	286386.0 38	0.79	1.37 E- 03	1.53 E-02
Actin, cytoplasmic 1	2309445	1170513. 34	1.97	1.37 E- 03	1.53 E-02
Protein S100-A8	4504146 6	1586883 82	0.28	1.86 E- 03	1.57 E-02
Protein S100-P	787167.7 93	1355733. 44	0.58	1.60 E- 03	1.57 E-02
Gamma-glutamyl hydrolase	26961.54 37	44739.71 31	0.60	1.60 E- 03	1.57 E-02
Chitotriosidase-1	64800.63 17	83470.35 17	0.78	1.86 E- 03	1.57 E-02
Metalloproteinase inhibitor 1	325896.1 64	256950.9 91	1.27	1.86 E- 03	1.57 E-02
Apolipoprotein C-I	57808.44 67	37879.75 45	1.53	1.60 E- 03	1.57 E-02

Aldo-keto reductase family 1 member A1	14116.23 97	9144.147	1.54	1.86 E-03	1.57 E-02
Ras-related protein Rab-1A	11005.53 48	6682.644 92	1.65	1.60 E-03	1.57 E-02
Programmed cell death 6-interacting protein	8136.511 43	4424.677 36	1.84	1.86 E-03	1.57 E-02
Nucleobindin-2	78248.82 78	41978.68 19	1.86	1.60 E-03	1.57 E-02
Transgelin-2	97107.58 98	49034.23 65	1.98	1.86 E-03	1.57 E-02
Leucine-rich repeat flightless-interacting protein 1	6016.715 28	2659.652 83	2.26	1.86 E-03	1.57 E-02
Ras-related C3 botulinum toxin substrate 2	42564.21 97	8293.321 99	5.13	1.86 E-03	1.57 E-02
Vinculin	137259.2 05	291038.8 31	0.47	2.15 E-03	1.78 E-02
Protein S100-A9	7248905 3.1	2609075 01	0.28	2.48 E-03	1.87 E-02
Proteasome subunit alpha type-3	56704.13 49	86668.76 17	0.65	2.48 E-03	1.87 E-02
Immunoglobulin heavy variable 6-1	142403.1 53	109793.9 1	1.30	2.48 E-03	1.87 E-02
Immunoglobulin lambda variable 7-46	84691.84	63712.52 31	1.33	2.48 E-03	1.87 E-02
C-X-C motif chemokine 17	1561.230 42	0	NA	2.35 E-03	1.87 E-02
Copine-3	31401.77 41	55215.05 49	0.57	2.86 E-03	2.09 E-02
Apolipoprotein E	7147.140 4	3871.407 79	1.85	2.86 E-03	2.09 E-02
Prostate stem cell antigen	28353.14 56	7230.415 55	3.92	3.00 E-03	2.16 E-02

Ceruloplasmin	1767046.39	1469912.06	1.20	3.28 E-03	2.22 E-02
Alpha-amylase 1	36663290.9	15625365.9	2.35	3.28 E-03	2.22 E-02
Calmodulin-like protein 3	12688.5703	4613.72618	2.75	3.28 E-03	2.22 E-02
Secretoglobin family 3A member 1	101785.721	15167.0479	6.71	3.28 E-03	2.22 E-02
C4b-binding protein alpha chain	48991.6786	108461.72	0.45	3.75 E-03	2.39 E-02
CD177 antigen	20675.2812	40383.9624	0.51	3.75 E-03	2.39 E-02
Peroxiredoxin-6	15935.584	9920.11174	1.61	3.75 E-03	2.39 E-02
Ras-related protein Rab-10	8322.0337	3541.32706	2.35	3.75 E-03	2.39 E-02
Arginase-1	76651.5558	133725.985	0.57	4.28 E-03	2.48 E-02
Neutrophil collagenase	440685.698	701174.871	0.63	4.28 E-03	2.48 E-02
Protein S100-A11	713525.122	615253.852	1.16	4.28 E-03	2.48 E-02
Choline transporter-like protein 4	126677.509	77769.1373	1.63	4.28 E-03	2.48 E-02
Cathepsin D	198963.266	113984.912	1.75	4.28 E-03	2.48 E-02
Kininogen-1	21013.9249	8984.9347	2.34	4.28 E-03	2.48 E-02
Histone H1.4	333376.043	59183.7839	5.63	4.28 E-03	2.48 E-02
Proteasome subunit alpha type-1	9919.49007	19786.786	0.50	4.88 E-03	2.62 E-02

Superoxide dismutase [Mn], mitochondrial	21067.78 63	38149.75 3	0.55	4.88 E-03	2.62 E-02
Alpha-2-macroglobulin	2034071	3378909. 52	0.60	4.88 E-03	2.62 E-02
Interleukin-1 receptor antagonist protein	330981.1 83	194570.0 63	1.70	4.88 E-03	2.62 E-02
Protein disulfide-isomerase A3	143947.8 71	83955.19 73	1.71	4.88 E-03	2.62 E-02
Cysteine-rich secretory protein 3	246185.4 84	41431.23 31	5.94	4.88 E-03	2.62 E-02
Nucleobindin-1	47066.90 34	40777.27 97	1.15	5.54 E-03	2.87 E-02
Immunoglobulin kappa variable 1-5	88145.46 81	56517.00 16	1.56	5.54 E-03	2.87 E-02
Serotransferrin	7085712. 41	3150953. 79	2.25	5.54 E-03	2.87 E-02
Annexin A3	1557305. 71	2888687. 15	0.54	6.28 E-03	3.15 E-02
Myosin regulatory light chain 12B	149424.2 14	178882.8 7	0.84	6.28 E-03	3.15 E-02
Glutathione S-transferase P	889380.9 77	579870.6 54	1.53	6.28 E-03	3.15 E-02
ADP-ribosyl cyclase/cyclic ADP-ribose hydrolase 2	52917.85 08	88516.85 13	0.60	7.10 E-03	3.37 E-02
Immunoglobulin kappa variable 4-1	306689.7 06	407058.5 63	0.75	7.10 E-03	3.37 E-02
Growth factor receptor-bound protein 2	10043.10 27	5956.845 79	1.69	7.10 E-03	3.37 E-02
Prosaposin	313739.1 45	165082.2 72	1.90	7.10 E-03	3.37 E-02
Putative elongation factor 1-alpha-like 3	89087.17 24	31974.83 42	2.79	7.10 E-03	3.37 E-02

Complement factor H	690888.0 01	1354862. 13	0.51	8.01 E- 03	3.61 E-02
Actin-related protein 2	78243.24 63	118736.1 86	0.66	8.01 E- 03	3.61 E-02
Peroxiredoxin-5, mitochondrial	301372.8 26	179253.7 27	1.68	8.01 E- 03	3.61 E-02
Actin, alpha cardiac muscle 1	553254.2 33	303008.4 76	1.83	8.01 E- 03	3.61 E-02
Mammaglobin-B	204535.0 12	69938.40 11	2.92	8.01 E- 03	3.61 E-02
Pulmonary surfactant-associated protein B	301608.0 8	194118.2 42	1.55	9.02 E- 03	3.98 E-02
Lysozyme C	5120533 2.9	2570489 2.5	1.99	9.02 E- 03	3.98 E-02
Bactericidal permeability-increasing protein	131438.5 34	205536.5 82	0.64	1.01 E- 02	4.29 E-02
Alpha-1B-glycoprotein	234251.0 8	346696.0 12	0.68	1.01 E- 02	4.29 E-02
Immunoglobulin heavy constant mu	3154705. 14	1818917. 92	1.73	1.01 E- 02	4.29 E-02
Beta-2-glycoprotein 1	141766.1 25	36198.49 24	3.92	1.01 E- 02	4.29 E-02
BPI fold-containing family A member 2	546650.9 98	946788.5 56	0.58	1.13 E- 02	4.58 E-02
BPI fold-containing family A member 1	977494.7 22	612461.1 95	1.60	1.13 E- 02	4.58 E-02
Galectin-1	34849.24 92	21222.97 77	1.64	1.13 E- 02	4.58 E-02
SH3 domain-binding glutamic acid-rich-like protein 3	64173.86 47	37886.85	1.69	1.13 E- 02	4.58 E-02
Albumin	1123752 25	5737262 3.4	1.96	1.13 E- 02	4.58 E-02

Apolipoprotein A-II	24274.77 87	14928.69 92	1.63	1.27 E- 02	5.06 E-02
Galectin-10	114448.9 57	60342.75 01	1.90	1.27 E- 02	5.06 E-02
Small proline-rich protein 3	80686.30 61	42488.77	1.90	1.42 E- 02	5.60 E-02
Transthyretin	1202.939 56	4091.543 53	0.29	1.45 E- 02	5.67 E-02
Leukocyte elastase inhibitor	319999.4 57	570683.9 36	0.56	1.58 E- 02	5.92 E-02
Myosin-9	880759.8 22	975444.6 05	0.90	1.58 E- 02	5.92 E-02
Extracellular glycoprotein lacritin	300387.7 11	212536.4 21	1.41	1.58 E- 02	5.92 E-02
Mucin-4	14906.67 7	8595.285 34	1.73	1.58 E- 02	5.92 E-02
Guanine nucleotide-binding protein G(I)/G(S)/G(T) subunit beta-2	16381.58 48	6689.912 51	2.45	1.58 E- 02	5.92 E-02
IgGFc-binding protein	1772571. 39	1067895. 48	1.66	1.75 E- 02	6.45 E-02
Protein-glutamine gamma-glutamyltransferase 2	14739.84 73	7368.299 18	2.00	1.75 E- 02	6.45 E-02
Plastin-2	3880822. 76	5007491. 38	0.78	1.95 E- 02	6.85 E-02
Superoxide dismutase [Cu-Zn]	35073.83 34	38011.51 41	0.92	1.95 E- 02	6.85 E-02
Zinc-alpha-2-glycoprotein	5502428	4262512. 34	1.29	1.95 E- 02	6.85 E-02
Beta-microseminoprotein	302251.6 55	193705.4 82	1.56	1.95 E- 02	6.85 E-02
Myeloid cell nuclear differentiation antigen	180085.9 69	102150.4 41	1.76	1.95 E- 02	6.85 E-02

Parkinson disease protein 7	89720.27 26	50768.46 74	1.77	1.95 E- 02	6.85 E-02
Phosphoglucomutase-2	10214.68 96	17557.24 13	0.58	2.16 E- 02	7.35 E-02
Myeloperoxidase	1177462 8.2	1857302 9.5	0.63	2.16 E- 02	7.35 E-02
Actin-related protein 2/3 complex subunit 2	165183.8 61	207296.5 53	0.80	2.16 E- 02	7.35 E-02
Glutathione S-transferase A1	41813.64 69	29878.95 78	1.40	2.16 E- 02	7.35 E-02
Histone H3.2	1181954. 54	2023164. 44	0.58	2.39 E- 02	7.78 E-02
Fatty acid-binding protein, adipocyte	29363.61 18	25076.18 09	1.17	2.39 E- 02	7.78 E-02
Protein S100-A7	51358.15 88	31918.16 5	1.61	2.39 E- 02	7.78 E-02
Nucleolin	14551.56 37	8524.262 89	1.71	2.39 E- 02	7.78 E-02
Nucleoside diphosphate kinase B	12955.50 4	6437.312 56	2.01	2.39 E- 02	7.78 E-02
Serpin B3	3580.186 53	462.2009 32	7.75	2.39 E- 02	7.78 E-02
Carcinoembryonic antigen-related cell adhesion molecule 8	43751.37 71	69723.98 92	0.63	2.63 E- 02	8.20 E-02
Beta-glucuronidase	17620.98 33	22961.91	0.77	2.63 E- 02	8.20 E-02
Cathepsin B	54983.69 41	45540.30 92	1.21	2.63 E- 02	8.20 E-02
Leucine-rich alpha-2-glycoprotein	74776.56 4	55350.63 89	1.35	2.63 E- 02	8.20 E-02
NPC intracellular cholesterol transporter 2	298150.2 62	187338.4 96	1.59	2.63 E- 02	8.20 E-02

Cofilin-1	1235773. 97	687469.6 36	1.80	2.63 E- 02	8.20 E-02
Hemopexin	1028417. 61	859112.7 28	1.20	2.90 E- 02	8.92 E-02
Mucin-5B	1390588 4	7961109. 13	1.75	2.90 E- 02	8.92 E-02
Phosphatidylethanolamine-binding protein 1	186200.4 08	142319.7 98	1.31	3.19 E- 02	9.61 E-02
Apoptosis-associated speck-like protein containing a CARD	40664.59 52	26466.86 93	1.54	3.19 E- 02	9.61 E-02
Heterogeneous nuclear ribonucleoprotein F	31731.32 54	18260.89 45	1.74	3.19 E- 02	9.61 E-02
Purine nucleoside phosphorylase	315892.2 71	426844.3 8	0.74	3.51 E- 02	1.04 E-01
Alpha-1-antichymotrypsin	301697.5 75	234324.3 19	1.29	3.51 E- 02	1.04 E-01
Cystatin-D	51231.74 72	9704.051 2	5.28	3.51 E- 02	1.04 E-01
Keratin, type I cytoskeletal 16	12549.78 24	28161.97 11	0.45	3.84 E- 02	1.10 E-01
Proteasome subunit beta type-8	24805.66 95	35634.21 57	0.70	3.84 E- 02	1.10 E-01
Cystatin-S	3417075. 41	1707790. 98	2.00	3.84 E- 02	1.10 E-01
T-complex protein 1 subunit delta	544.9161 49	205.1185 45	2.66	3.84 E- 02	1.10 E-01
Alpha-actinin-1	668354.4 27	893907.0 81	0.75	4.21 E- 02	1.17 E-01
Immunoglobulin lambda variable 3-9	282165.0 92	212642.2 05	1.33	4.21 E- 02	1.17 E-01
40S ribosomal protein SA	10833.81 41	8147.339 68	1.33	4.21 E- 02	1.17 E-01

Complement C3	7158650. 1	5215554. 07	1.37	4.21 E- 02	1.17 E-01
Peroxiredoxin-1	33712.63 91	18847.93 55	1.79	4.21 E- 02	1.17 E-01
HLA class II histocompatibility antigen, DR alpha chain	4764.277 63	2345.809 63	2.03	4.21 E- 02	1.17 E-01
Low affinity immunoglobulin gamma Fc region receptor III-A	86449.96 58	150575.0 38	0.57	4.60 E- 02	1.24 E-01
Transketolase	5408875. 51	6869256. 21	0.79	4.60 E- 02	1.24 E-01
Integrin alpha-M	59998.65 4	38188.18 77	1.57	4.60 E- 02	1.24 E-01
Immunoglobulin lambda constant 2	449652.4 59	189365.5 04	2.37	4.60 E- 02	1.24 E-01