

Precision Gestational Diabetes Treatment: Systematic review and Meta-analyses

Jamie L Benham, Véronique Gingras, Niamh-Maire McLennan, Jasper Most, Jennifer M Yamamoto, Catherine E Aiken, Susan E Ozanne, Reynolds RM on behalf of ADA/EASD PMDI

Supplementary Text S1 Search Strategy

Supplementary Figures 1.1 to 1.13 Forest Plots (A) and Funnel Plots (B) for GDM to be adequately managed with lifestyle measures without need for additional pharmacological therapy

Supplementary Figures 2.1 to 2.12 Forest Plots (A) and Funnel Plots (B) for Oral Pharmacological Agent adequate in controlling glucose vs not adequate

Supplementary Table 1 Narrative summary of studies not included in the meta-analysis

Supplementary Text S1 Search Strategy

PubMed Search

Systematic review 1: Lifestyle interventions

#1 Diabetes, Gestational"[Mesh]

#2 gestational diabetes"[Title/Abstract] OR GDM[Title/Abstract] OR pregnancy induced diabetes[Title/Abstract] OR pregnancy-induced diabetes

#3 #1 OR #2

a.#4 (((("Body-Weight Trajectory"[Mesh]) OR "Body Mass Index"[Mesh]) OR "Body Weight"[Mesh]) OR "Body Composition"[Mesh]) OR "Waist Circumference"[Mesh]) OR weight gain[MeSH]

#5 bodyweight*[Title/Abstract] OR "body weight"[Title/Abstract] OR body-weight*[Title/Abstract] OR bmi[Title/Abstract] OR "body mass index"[Title/Abstract] OR "body composition"[Title/Abstract] OR bodycomposition[Title/Abstract] OR body-composition[Title/Abstract] OR "body fat"[Title/Abstract] OR bodyfat body-fat[Title/Abstract] OR "waist circumfer*[Title/Abstract] OR waistcircumfer*[Title/Abstract] OR waist-circumfer*[Title/Abstract] OR "weight gain"[Title/Abstract] OR weight-gain[Title/Abstract] OR weightgain[Title/Abstract]

#6 #4 OR #5

b. #7 (((("Diet"[Mesh]) OR "Dietary Supplements"[Mesh]) OR "Diet, Carbohydrate-Restricted"[Mesh]) OR "Diet, Fat-Restricted"[Mesh]) OR "Caloric Restriction"[Mesh] OR nutrition[MeSH]

#8 diet*[Title/Abstract] OR "caloric restrict*[Title/Abstract] OR calory-restrict*[Title/Abstract] OR eating[Title/Abstract] OR macronutri*[Title/Abstract] OR nutrition*[Title/Abstract] OR protein*[Title/Abstract] OR meal[Title/Abstract] OR beverage*[Title/Abstract] OR meat*[Title/Abstract] OR behavior*[Title/Abstract] OR behaviour*[Title/Abstract] OR habit*[Title/Abstract] OR sleep*[Title/Abstract] OR food*[Title/Abstract]

#9 #7 OR #8

c. #10 exercise[MeSH] OR physical fitness [MeSH] OR lifestyle [MeSH] OR healthy lifestyle [MeSH] OR sedentary behavior [MeSH]

#11 exercis*[Title/Abstract] OR "physical activit*[Title/Abstract] OR fitness[Title/Abstract] OR sedentary[Title/Abstract] OR walk*[Title/Abstract] OR stretch*[Title/Abstract] OR lifestyle*[Title/Abstract] OR "life style*[Title/Abstract] OR life-style*[Title/Abstract] OR wellness[Title/Abstract] OR "strength train*[Title/Abstract] OR strength-train*[Title/Abstract]

#12 #10 OR #11

#13 #6 OR #9 OR #12

#14 #3 AND #13

#15 ("controlled trial*" OR randomi* OR "observational stud*" OR RCT OR "retrospective stud*" OR Metformin in Gestational Diabetes trial) OR ("controlled trial"[Publication Type] OR randomi*[Publication Type] OR "observational stud*[Publication Type] OR RCT[Publication Type] OR "retrospective stud*[Publication Type])

#16 #14 AND #15

#17 #16 filters: humans, English

Systematic review 2: Pharmacological interventions

#1 "Diabetes, Gestational"[Mesh]

#2 "gestational diabetes"[Title/Abstract] OR GDM[Title/Abstract] OR pregnancy induced diabetes[Title/Abstract] OR pregnancy-induced diabetes

#3 #1 OR #2

#4 "Insulin"[Mesh]

#5 (("Metformin"[Mesh]) OR "Sulfonylurea Compounds"[Mesh]) OR "Glyburide"[Mesh]) OR "Secretagogues"[Mesh]

#6 insulin*[Title/Abstract] OR novolin[Title/Abstract] OR iletin[Title/Abstract] OR sulfonylurea*[Title/Abstract] OR Acetohexamide[Title/Abstract] OR Carbutamide[Title/Abstract] OR Chlorpropamide[Title/Abstract] OR Gliclazide[Title/Abstract] OR Glyburide[Title/Abstract] OR Tolazamide[Title/Abstract] OR Tolbutamide[Title/Abstract] OR sulphonylurea*[Title/Abstract] OR glibenclamide[Title/Abstract] OR secretagogues[Title/Abstract] OR "pharmacological therapy"[Title/Abstract]

#7 #4 OR #5 OR #6

#8 #3 AND #7

#9 ("controlled trial*" OR randomi* OR "observational stud*" OR RCT OR "retrospective stud*" OR Metformin in Gestational Diabetes trial) OR ("controlled trial*" [Publication Type] OR randomi* [Publication Type] OR "observational stud*" [Publication Type] OR RCT [Publication Type] OR "retrospective stud*" [Publication Type])

#10 #8 AND #9

#11 #10 Filters: humans, English

Embase search

#1 'pregnancy diabetes mellitus'/exp

#2 'gestational diabetes':ab,ti OR gdm:ab,ti OR 'pregnancy-induced diabetes':ab,ti OR 'pregnancy induced diabetes':ab,ti

#3 #1 OR #2

Systematic review 1: Lifestyle interventions

#4 'weight trajectory' AND 'body weight'/exp OR 'body mass'/exp OR 'body weight'/exp OR 'body composition'/exp OR 'waist circumference'/exp OR 'body weight gain'/exp

#5 bodyweight*:ab,ti OR 'body weight*':ab,ti OR 'body-weight*or bmi':ab,ti OR 'body mass index':ab,ti OR bodycomposition:ab,ti OR 'body composition':ab,ti OR 'body fator body-fat':ab,ti OR 'waist circumfer*':ab,ti OR 'waistcircumfer*or waist-circumfer*':ab,ti OR 'weight gain':ab,ti OR weightgain:ab,ti

#6 #4 OR #5

#7 'diet'/exp OR 'dietary supplement'/exp OR 'low carbohydrate diet'/exp OR 'low fat diet'/exp OR 'caloric restriction'/exp OR 'nutrition'/exp

#8 diet*:ab,ti OR 'caloric restrict*':ab,ti OR 'calory restrict*':ab,ti OR eating:ab,ti OR macronutri*:ab,ti OR nutrition*:ab,ti OR protein*:ab,ti OR meal:ab,ti OR beverage*:ab,ti OR meat*:ab,ti OR behavior*:ab,ti OR behaviour*:ab,ti OR habit*:ab,ti OR sleep*:ab,ti OR food*:ab,ti

#9 #7 OR #8

#10 'exercise'/exp OR 'fitness'/exp OR 'lifestyle'/exp OR 'healthy lifestyle'/exp OR 'sedentary lifestyle'/exp

#11 exercis*:ab,ti OR 'physical activit*':ab,ti OR fitness:ab,ti OR sedentary:ab,ti OR walk*:ab,ti OR stretch*:ab,ti OR lifestyle*:ab,ti OR 'life style*':ab,ti OR wellness:ab,ti OR 'strength train*':ab,ti

#12 #10 OR #11

#13 #6 OR #9 OR #12

Study design filter

#14 ((randomized:ab,ti OR randomised:ab,ti OR randomly:ab,ti OR rct:ab,ti OR 'retrospective stud*':ab,ti OR controlled) AND clinical AND trial:ab,ti OR controlled) AND trial:ab,ti OR 'randomized controlled trial'/de OR 'controlled clinical trial'/de

Combination search RQ1 Lifestyle interventions

GDM + Lifestyle interventions + study design filter

#15 #3 AND #13 AND #14

AND [embase]/lim NOT ([embase]/lim AND [medline]/lim)

Filters Human, English

NOT 'conference abstract':it

Systematic review 2: Pharmacological interventions

#16 'insulin'/exp

#17 'metformin'/exp OR 'sulfonylurea derivative'/exp OR 'glibenclamide'/exp OR 'secretagogue'/exp

#18 (insulin* OR novolin OR iletin OR sulfonylurea* OR acetohexamide OR carbutamide OR chlorpropamide OR gliclazide OR glyburide OR tolazamide OR tolbutamide OR sulphonylurea* OR glibenclamide OR secretagogues OR pharmacological) AND therapy

#19 #16 OR #17 OR #18

Combination search RQ2 Pharmacological interventions

#6 GDM + Pharmacological interventions + study design filter

#3 AND #19 AND #13

AND [embase]/lim NOT ([embase]/lim AND [medline]/lim)

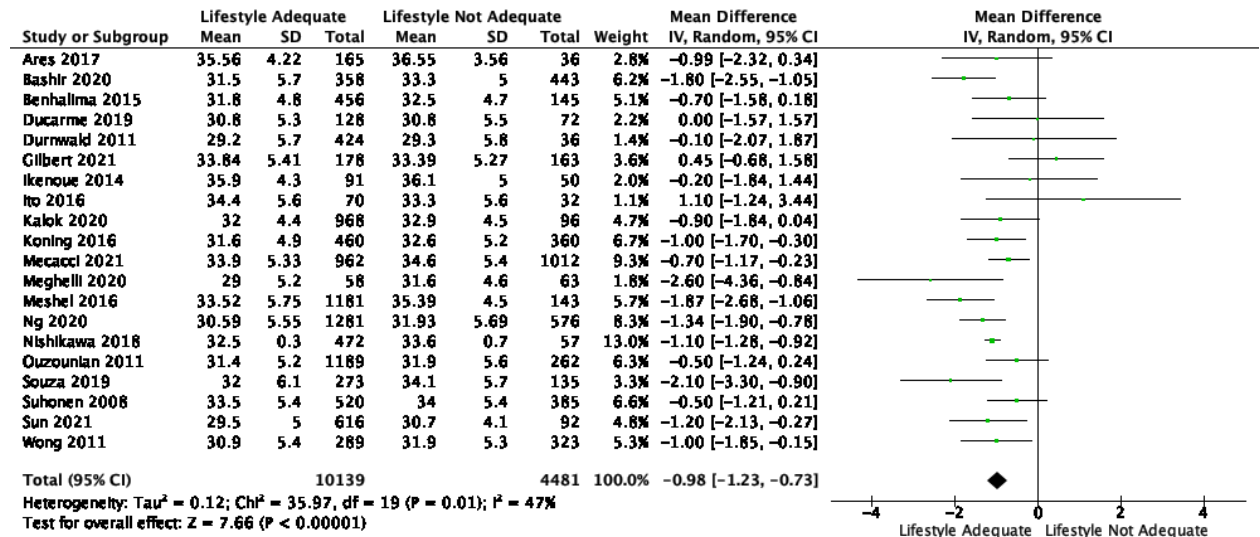
Filters Human, English

NOT 'conference abstract':it

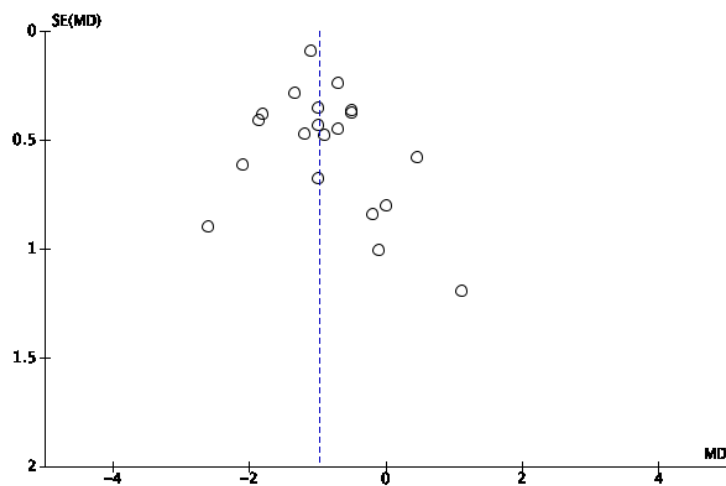
Supplementary Figures 1.1 to 1.13

Forest Plots (A) and Funnel Plots (B) for GDM to be adequately managed with lifestyle measures without need for additional pharmacological therapy

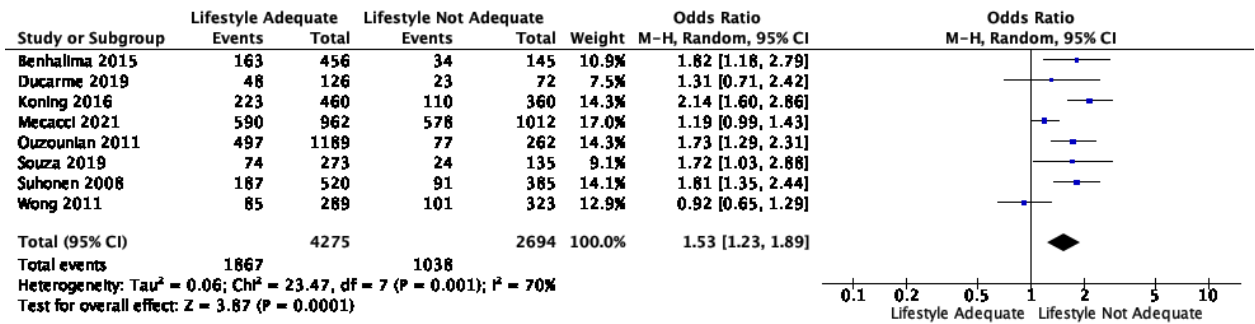
Supplementary Figure 1.1A Forest plot for included studies comparing if lifestyle was adequate or not adequate for maternal age



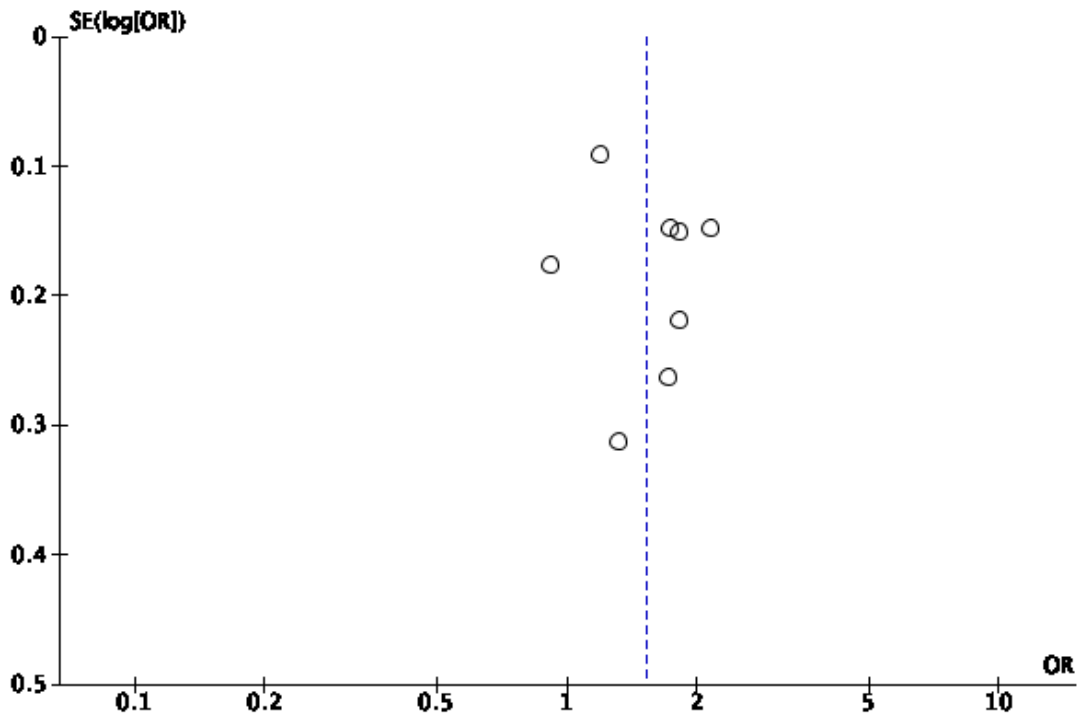
Supplementary Figure 1.1B Funnel Plot for Assessment of Publication Bias



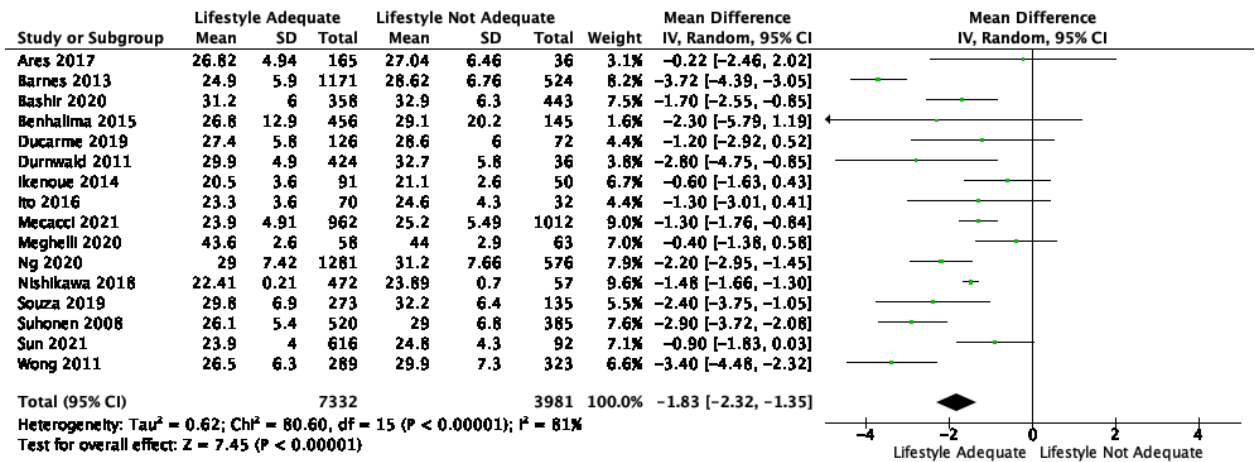
Supplementary Figure 1.2A Forest plot for included studies comparing if lifestyle was adequate or not adequate for nulliparity



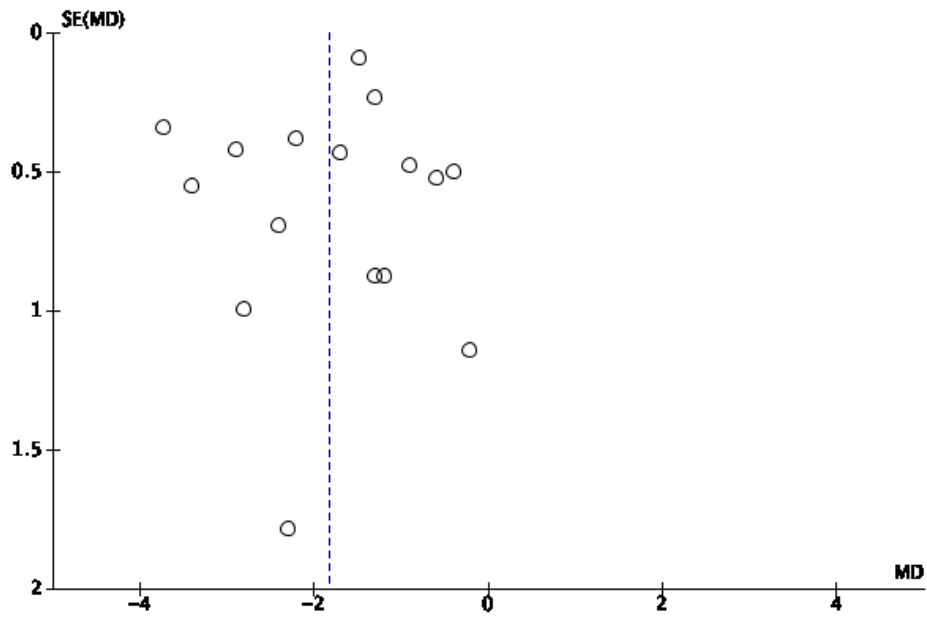
Supplementary Figure 1.2B Funnel Plot for Assessment of Publication Bias



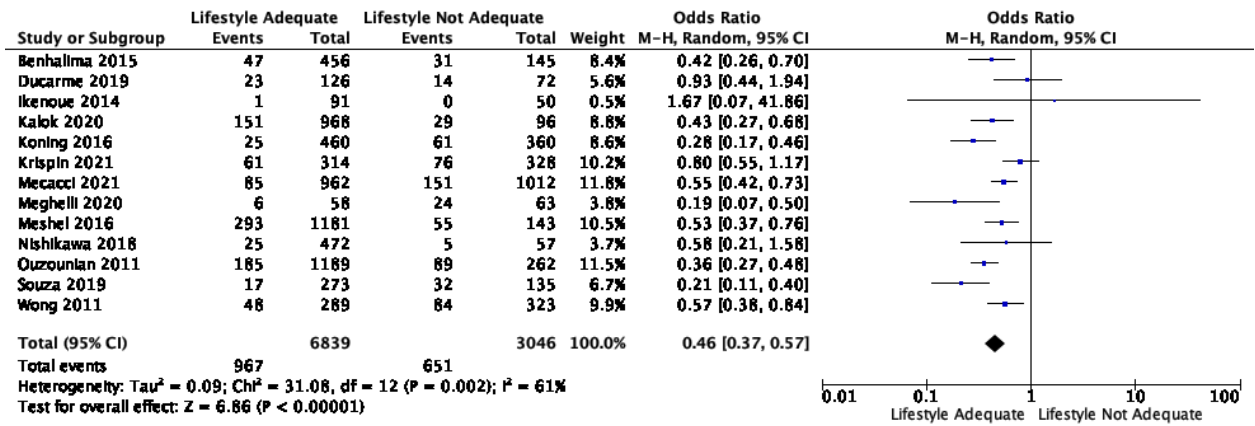
Supplementary Figure 1.3A Forest plot for included studies comparing if lifestyle was adequate or not adequate for body mass index



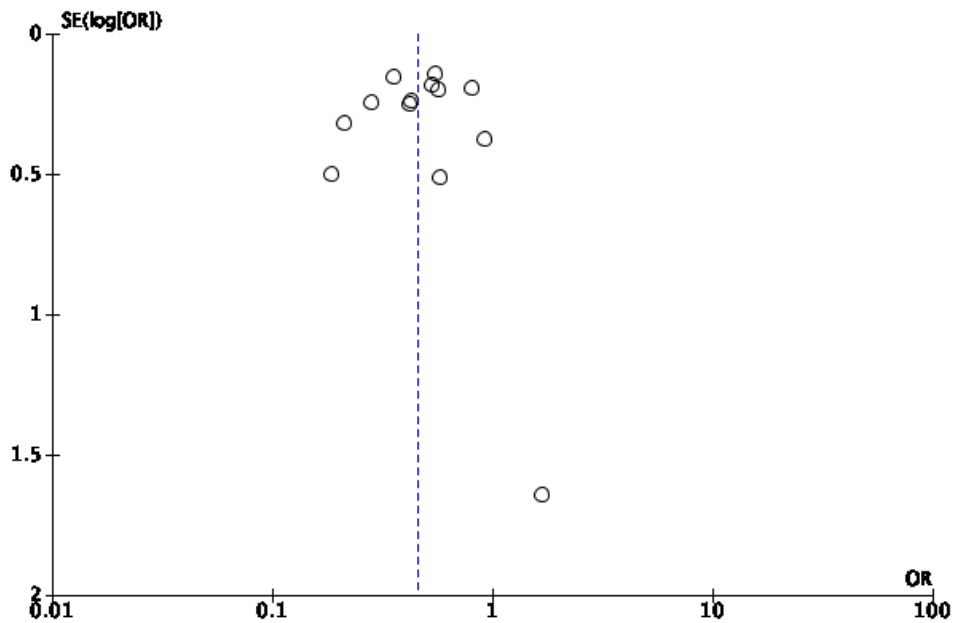
Supplementary Figure 1.3B Funnel Plot for Assessment of Publication Bias



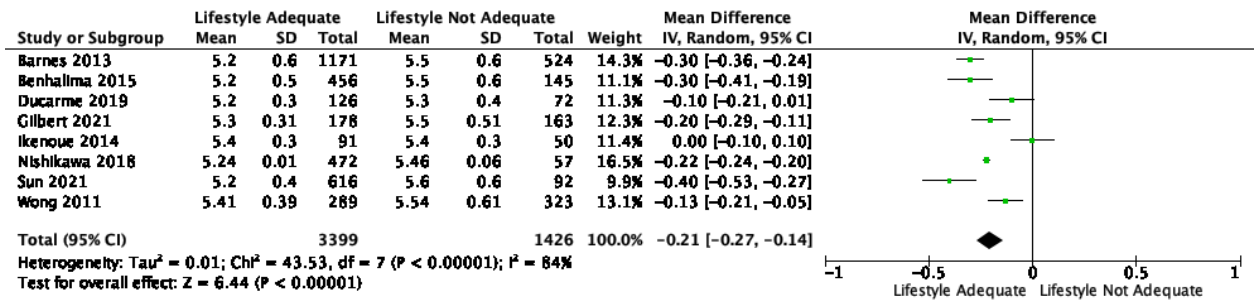
Supplementary Figure 1.4A Forest plot for included studies comparing if lifestyle was adequate or not adequate for previous history of gestational diabetes



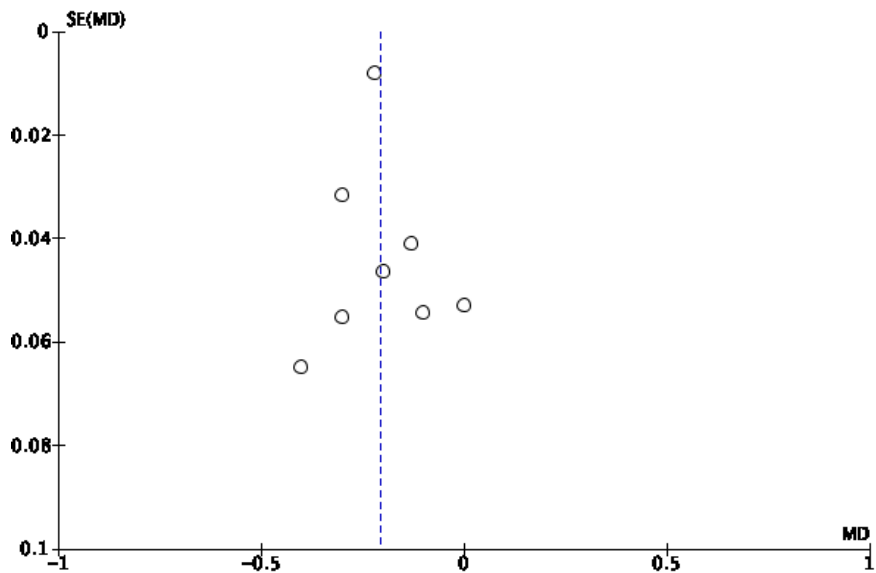
Supplementary Figure 1.4B Funnel Plot for Assessment of Publication Bias



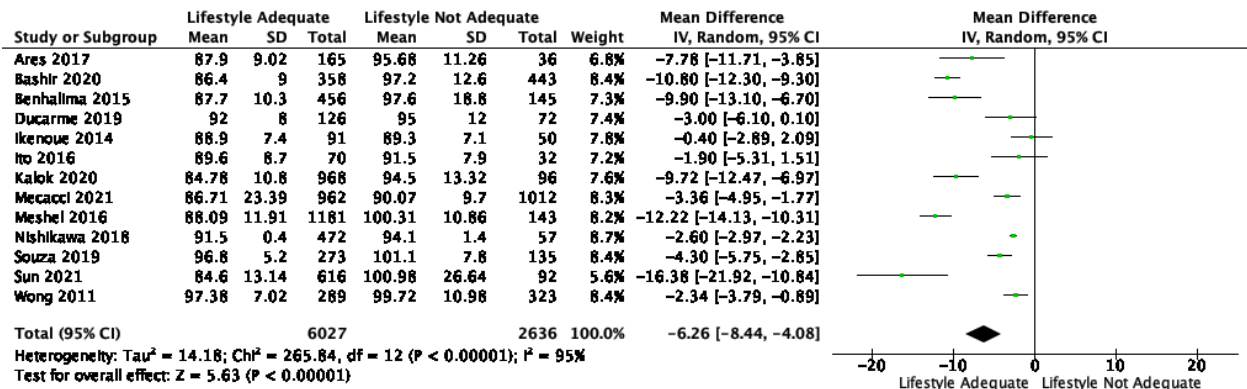
Supplementary Figure 1.5A Forest plot for included studies comparing if lifestyle was adequate or not adequate for haemoglobin A1C



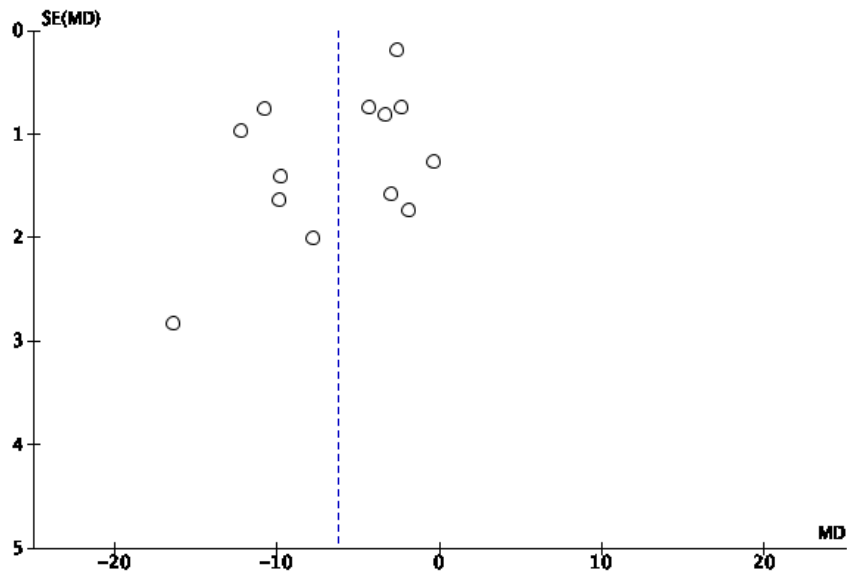
Supplementary Figure 1.5B Funnel Plot for Assessment of Publication Bias



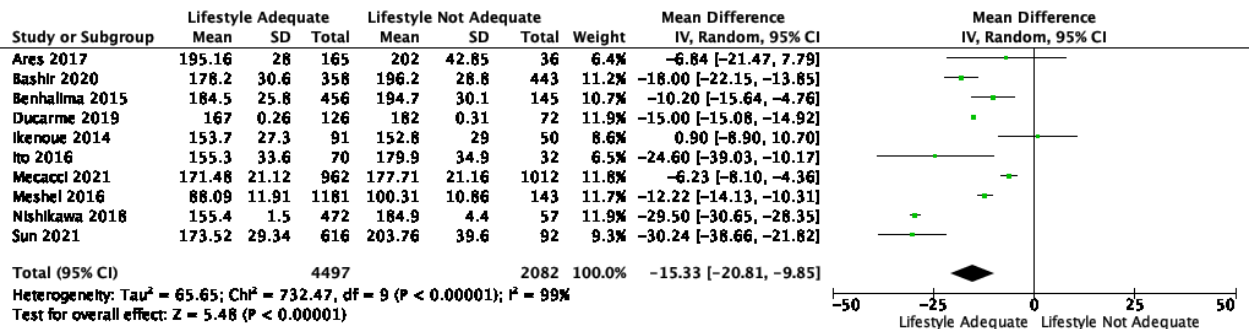
Supplementary Figure 1.6A Forest plot for included studies comparing if lifestyle was adequate or not adequate for fasting glucose



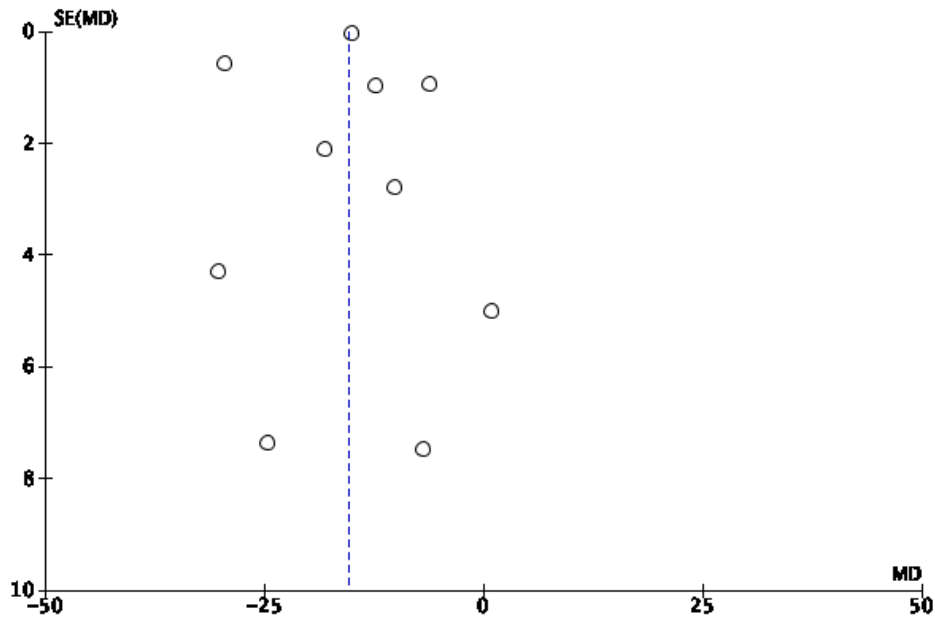
Supplementary Figure 1.6B Funnel Plot for Assessment of Publication Bias



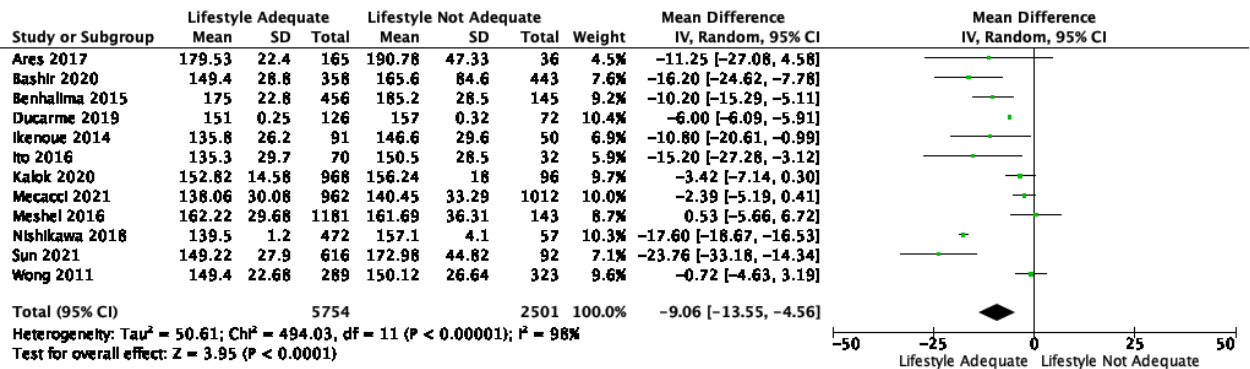
Supplementary Figure 1.7A Forest plot for included studies comparing if lifestyle was adequate or not adequate for 1-hour glucose



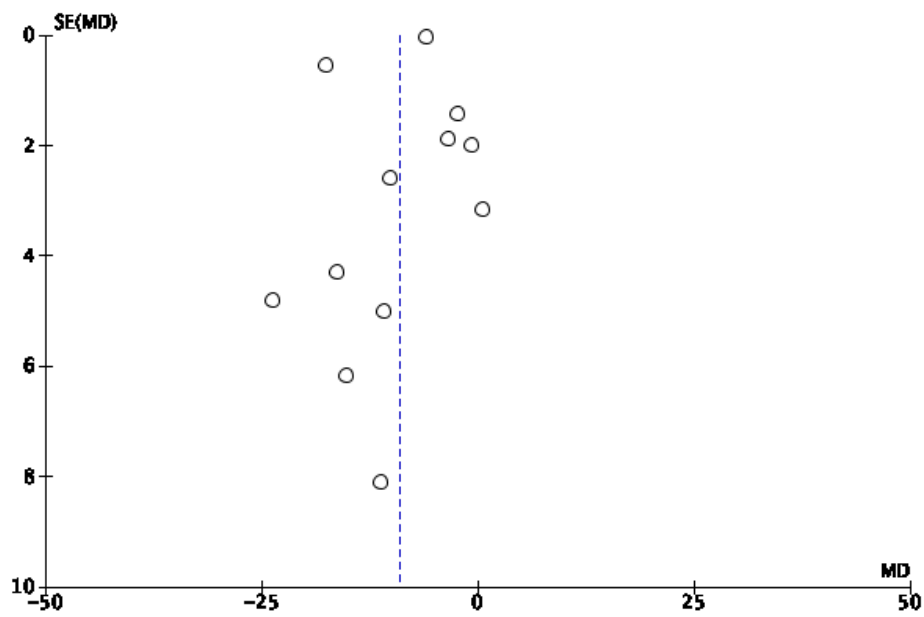
Supplementary Figure 1.7B Funnel Plot for Assessment of Publication Bias



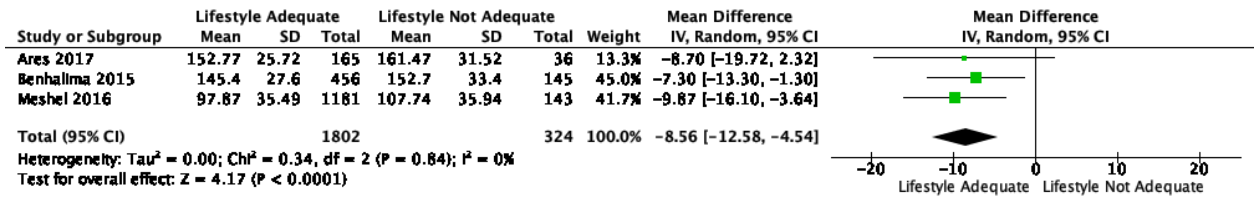
Supplementary Figure 1.8A Forest plot for included studies comparing if lifestyle was adequate or not adequate for 2-hour glucose



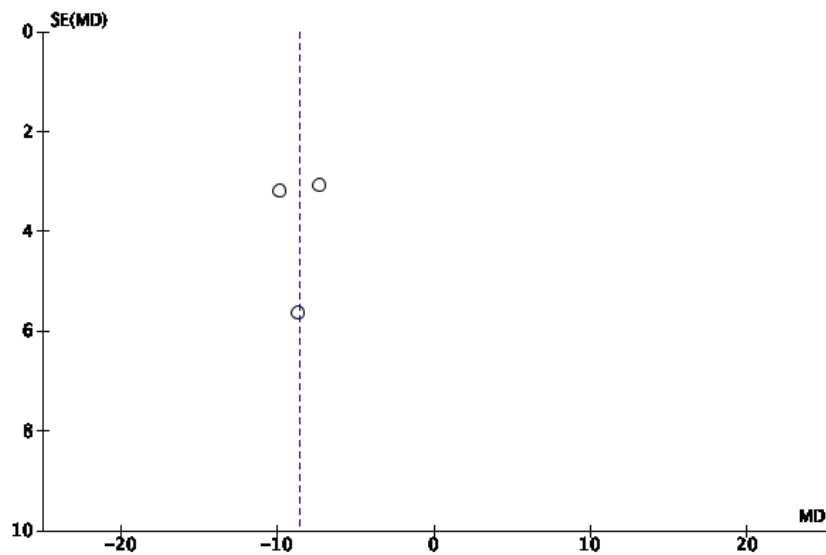
Supplementary Figure 1.8B Funnel Plot for Assessment of Publication Bias



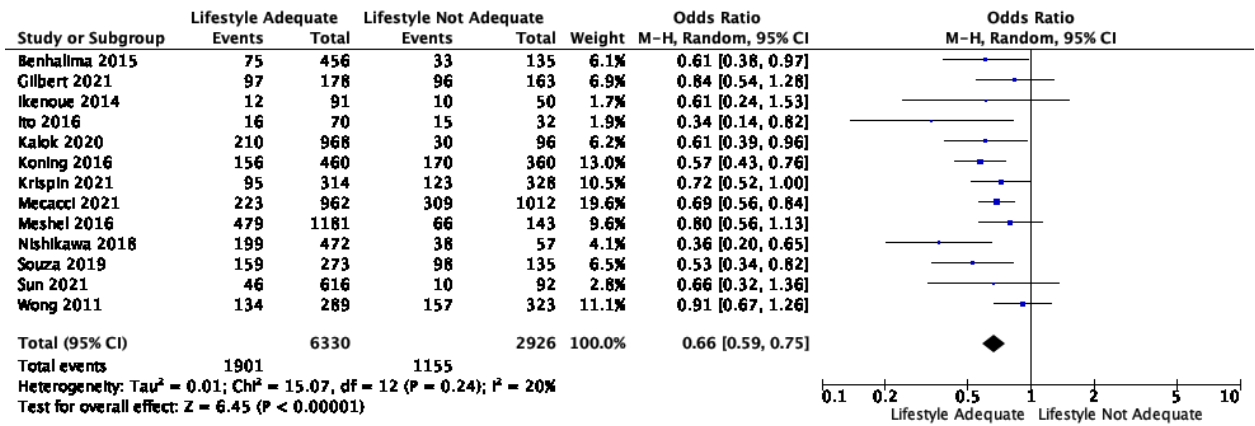
Supplementary Figure 1.9A Forest plot for included studies comparing if lifestyle was adequate or not adequate for 3-hour glucose



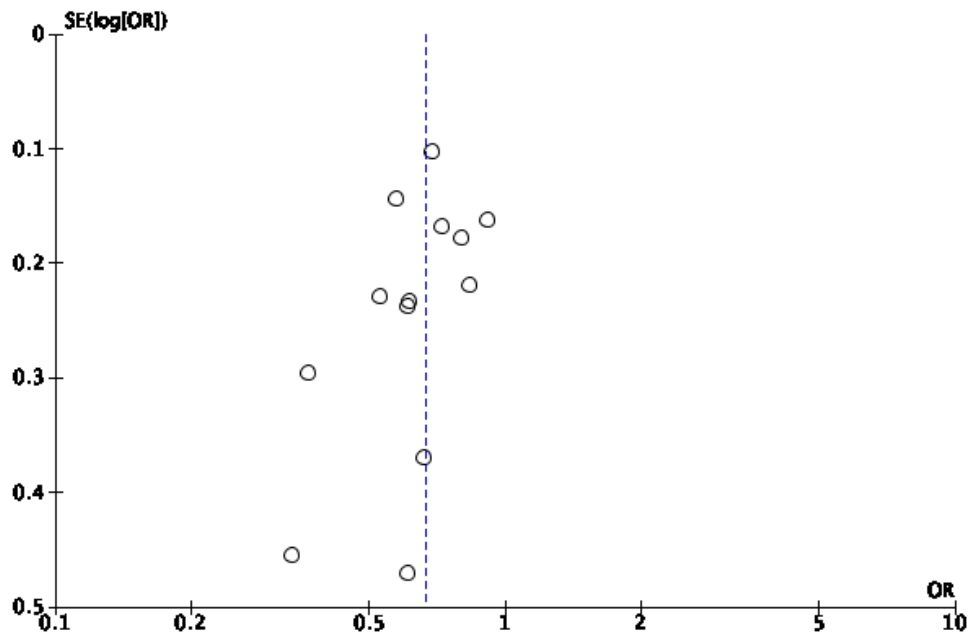
Supplementary Figure 1.9B Funnel Plot for Assessment of Publication Bias



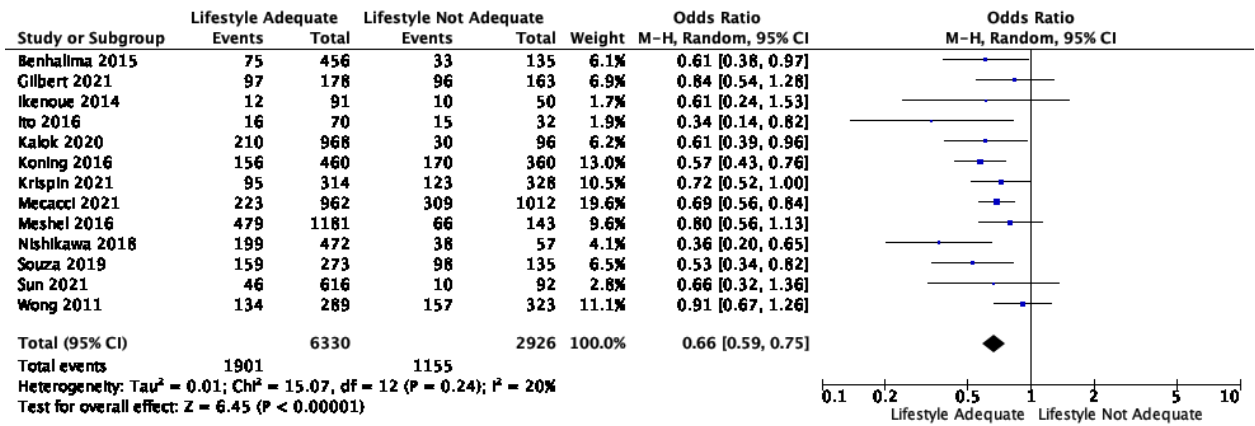
Supplementary Figure 1.10A Forest plot for included studies comparing if lifestyle was adequate or not adequate for family history of diabetes



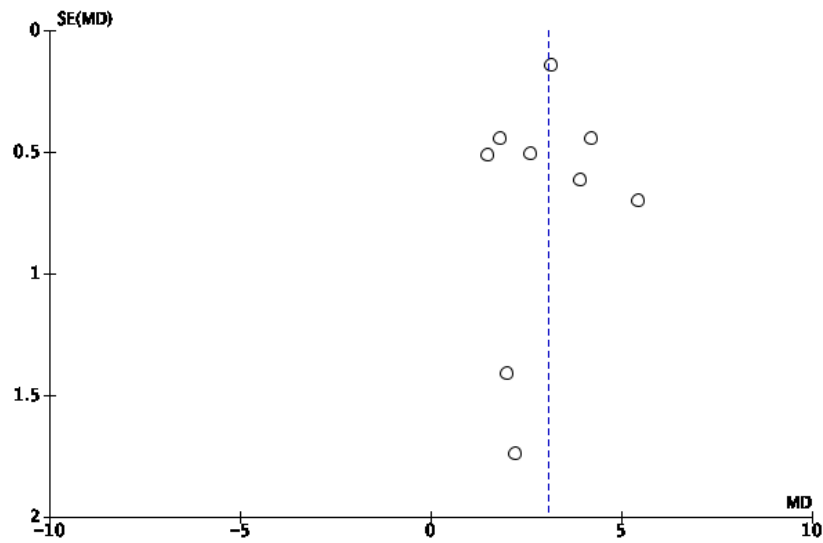
Supplementary Figure 1.10B Funnel Plot for Assessment of Publication Bias



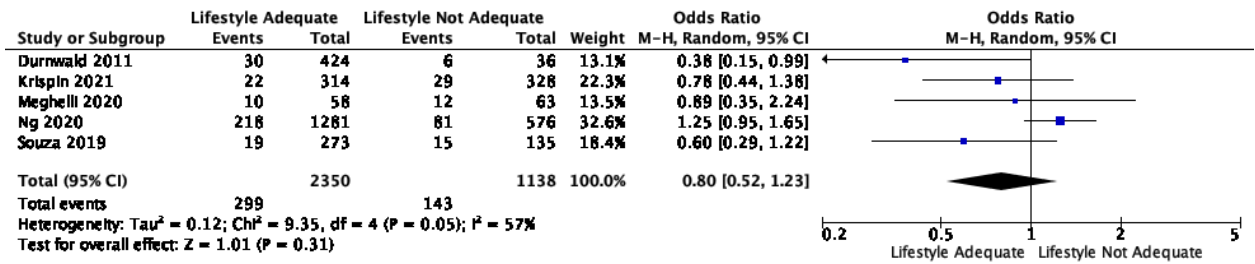
Supplementary Figure 1.11A Forest plot for included studies comparing if lifestyle was adequate or not adequate for gestational age at gestational diabetes diagnosis



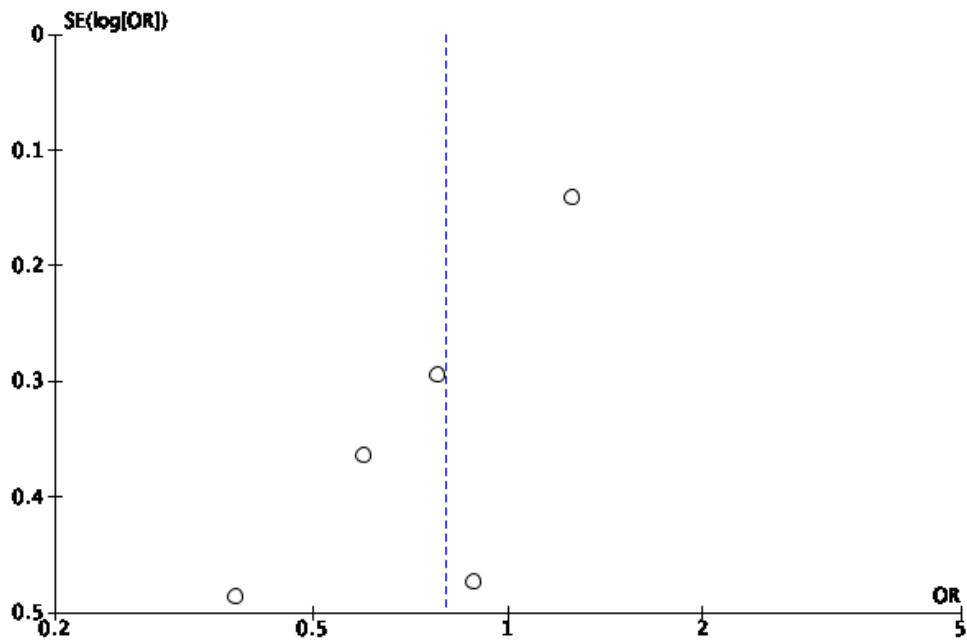
Supplementary Figure 1.11B Funnel Plot for Assessment of Publication Bias



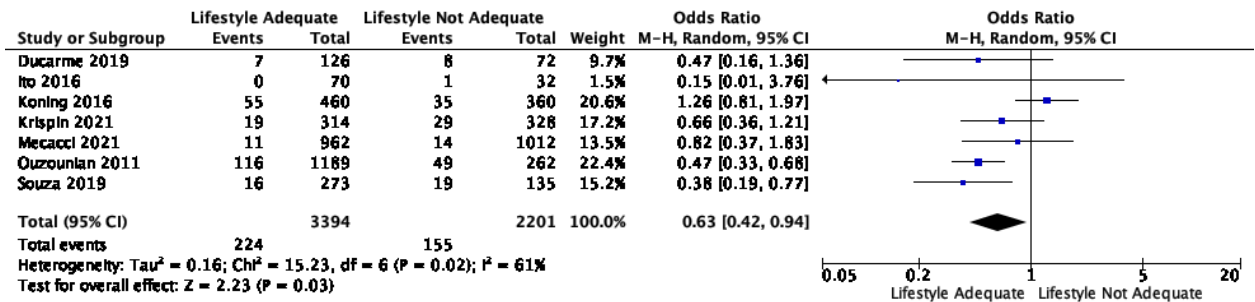
Supplementary Figure 1.12A Forest plot for included studies comparing if lifestyle was adequate or not adequate for history of smoking



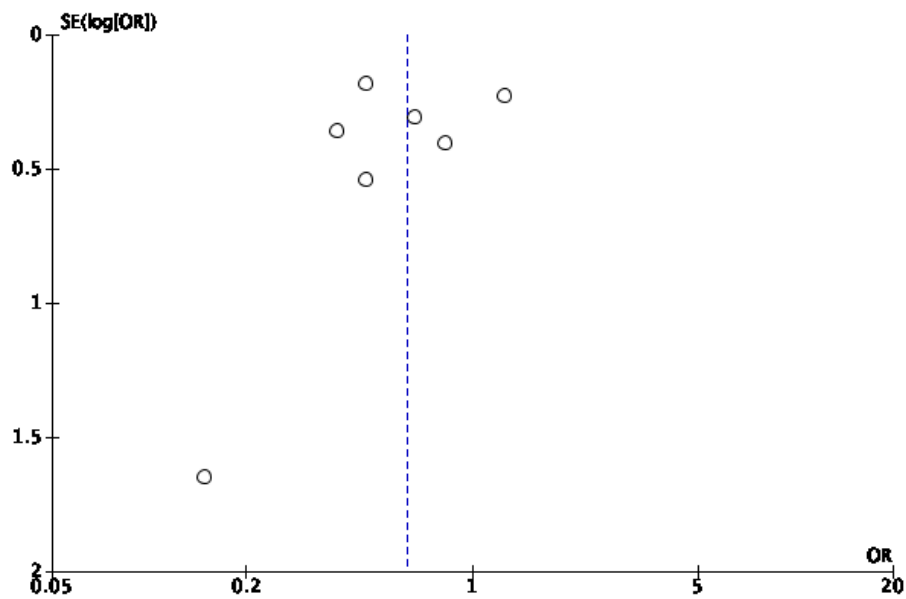
Supplementary Figure 1.12B Funnel Plot for Assessment of Publication Bias



Supplementary Figure 1.13A Forest plot for included studies comparing if lifestyle was adequate or not adequate for previous history of macrosomia



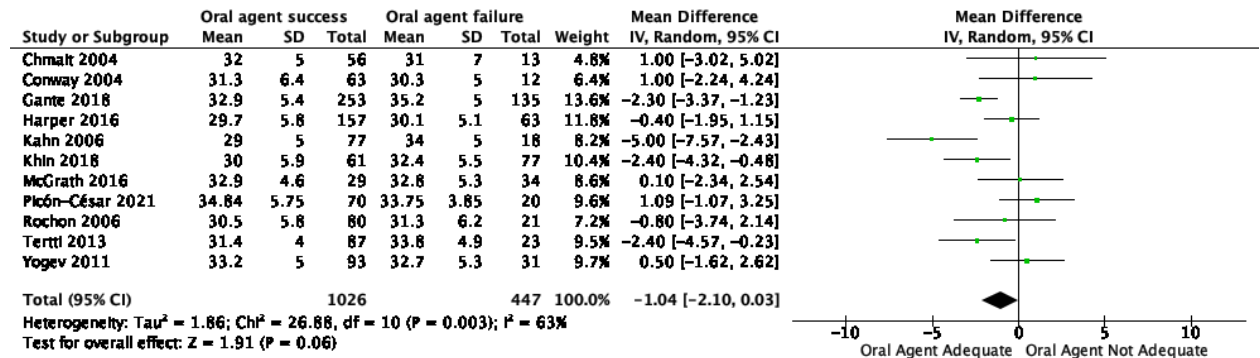
Supplementary Figure 1.13B Funnel Plot for Assessment of Publication Bias



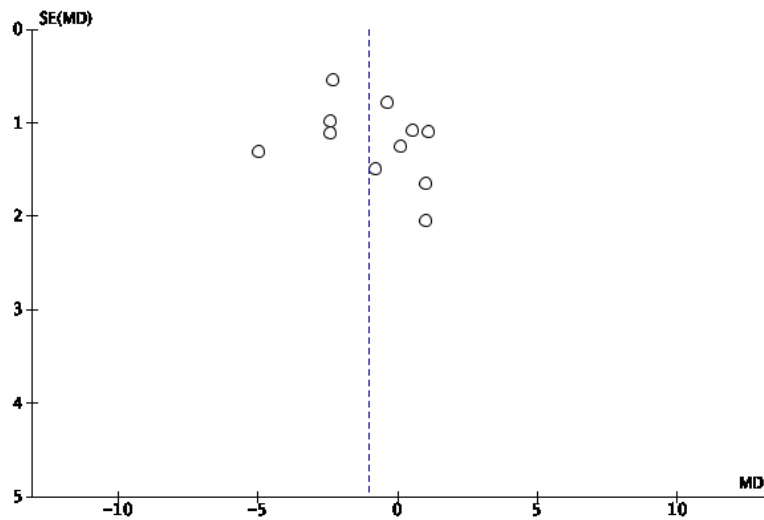
Supplementary Figures 2.1 to 2.12

Forest Plots (A) and Funnel Plots (B) for Oral Pharmacological Agent adequate in controlling glucose vs not adequate

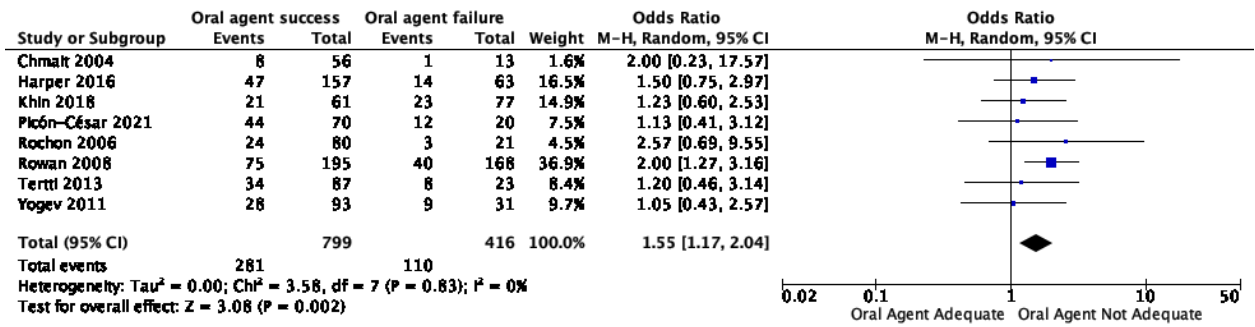
Supplementary Figure 2.1A Forest plot for included studies comparing if oral pharmacological agent was adequate or not adequate for maternal age



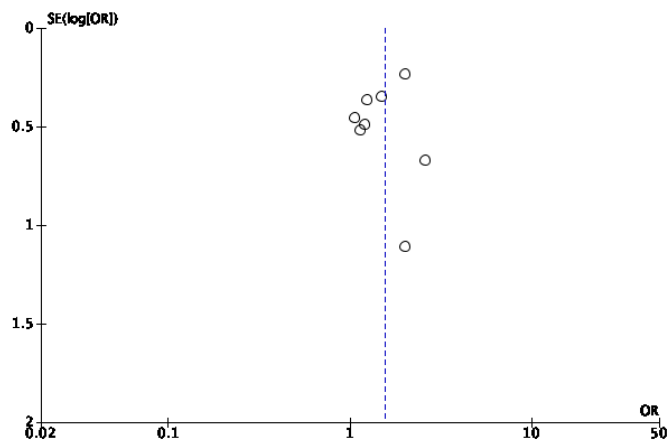
Supplementary Figure 2.1B Funnel Plot for Assessment of Publication Bias



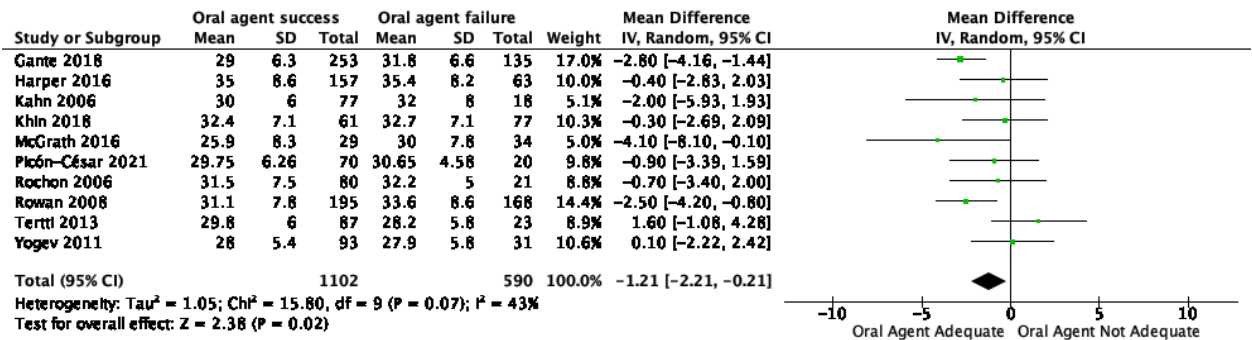
Supplementary Figure 2.2A Forest plot for included studies comparing if oral pharmacological agent was adequate or not adequate for nulliparity



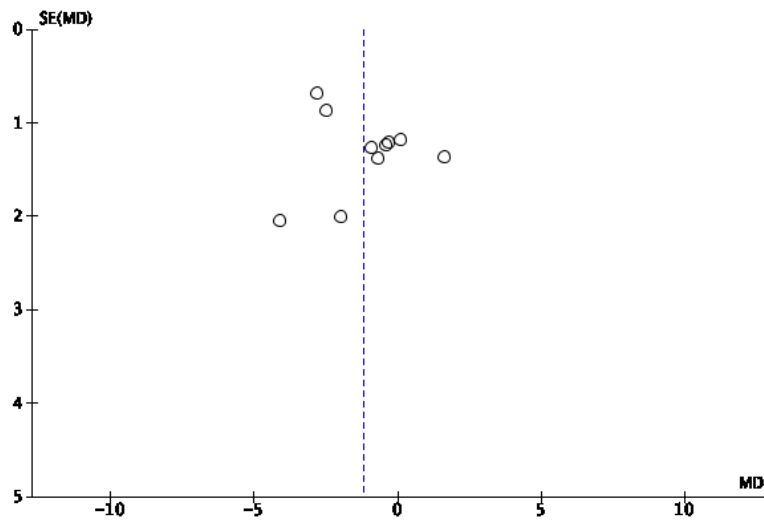
Supplementary Figure 2.2B Funnel Plot for Assessment of Publication Bias



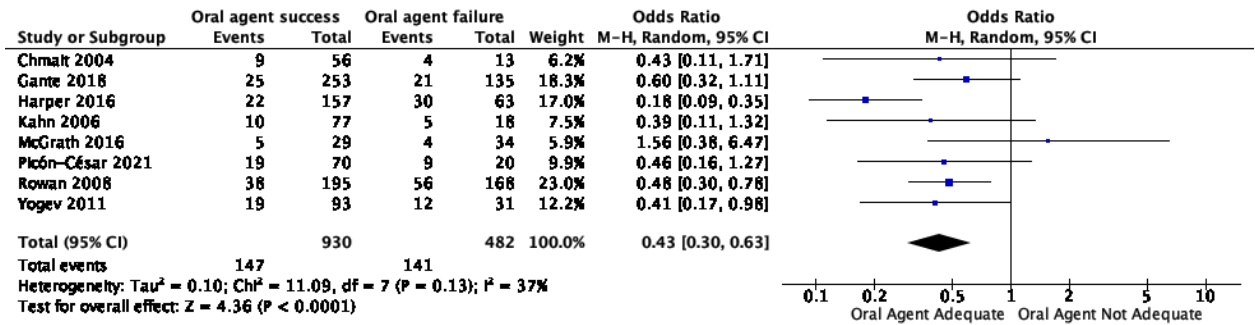
Supplementary Figure 2.3A Forest plot for included studies comparing if oral pharmacological agent was adequate or not adequate for body mass index



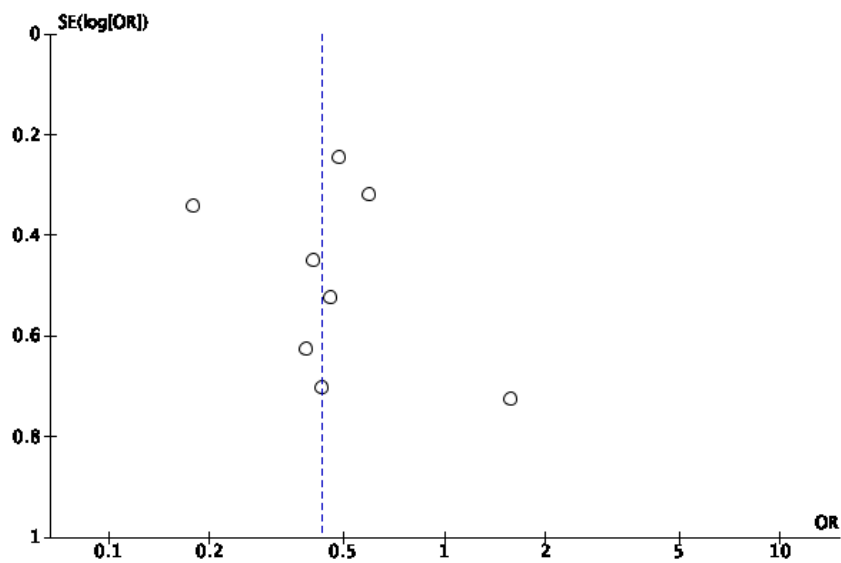
Supplementary Figure 2.3B Funnel Plot for Assessment of Publication Bias



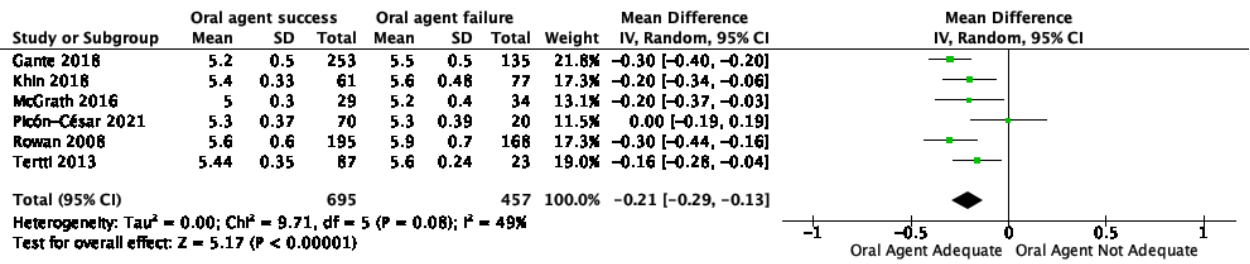
Supplementary Figure 2.4A Forest plot for included studies comparing if oral pharmacological agent was adequate or not adequate for previous history of gestational diabetes



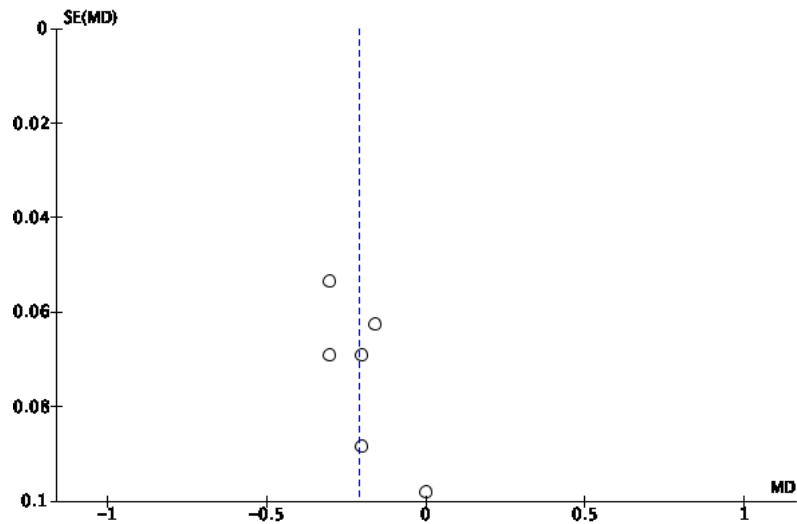
Supplementary Figure 2.4B Funnel Plot for Assessment of Publication Bias



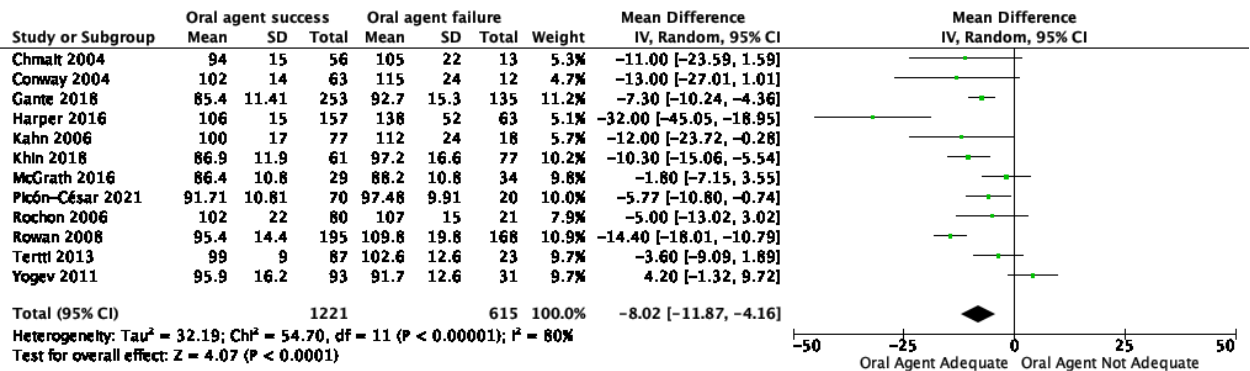
Supplementary Figure 2.5A Forest plot for included studies comparing if oral pharmacological agent was adequate or not adequate for haemoglobin A1C



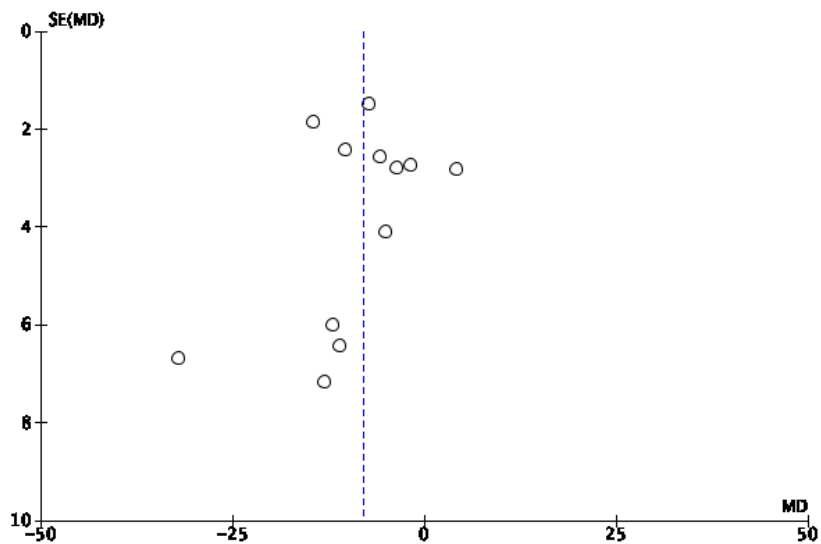
Supplementary Figure 2.5B Funnel Plot for Assessment of Publication Bias



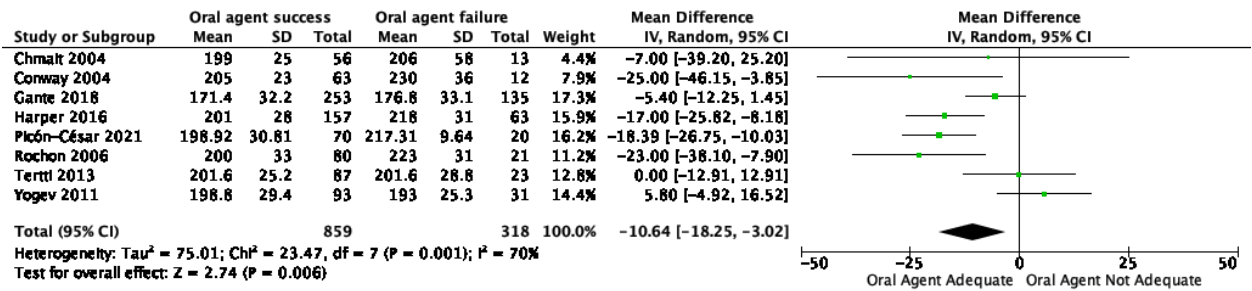
Supplementary Figure 2.6A Forest plot for included studies comparing if oral pharmacological agent was adequate or not adequate for fasting glucose



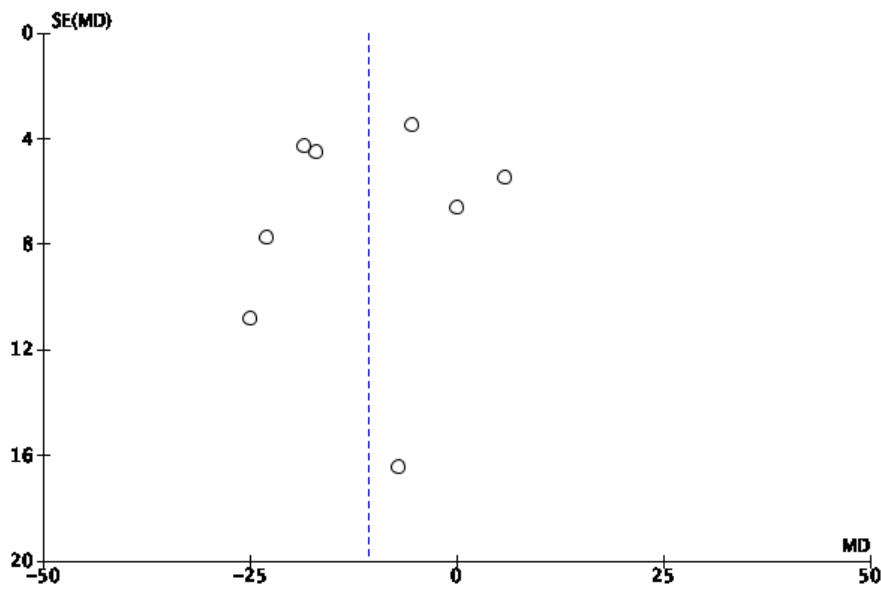
Supplementary Figure 2.6B Funnel Plot for Assessment of Publication Bias



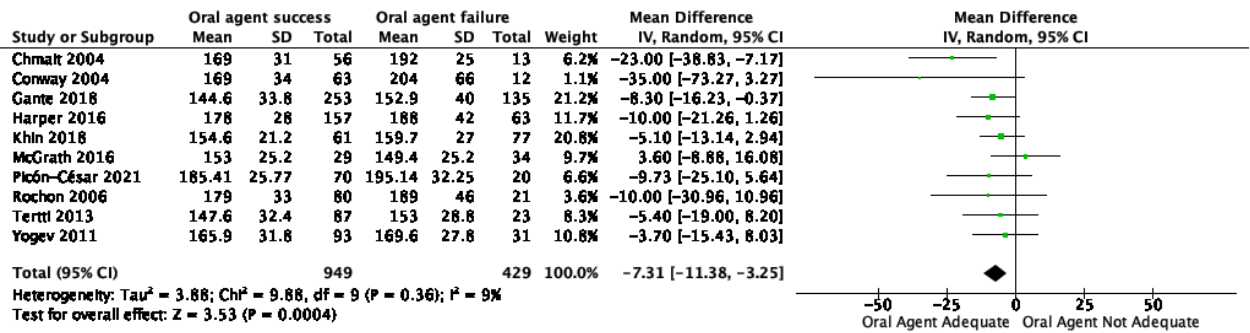
Supplementary Figure 2.7A Forest plot for included studies comparing if oral pharmacological agent was adequate or not adequate for 1-hour glucose



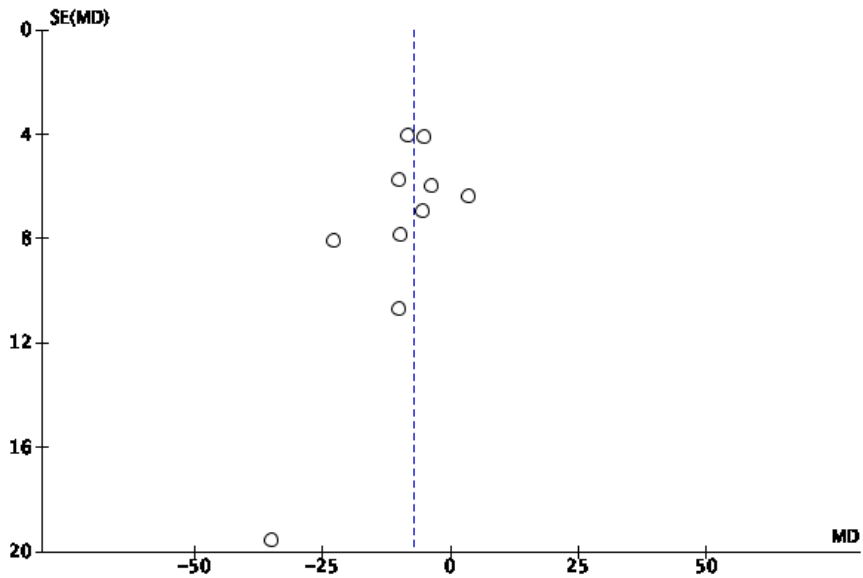
Supplementary Figure 2.7B Funnel Plot for Assessment of Publication Bias



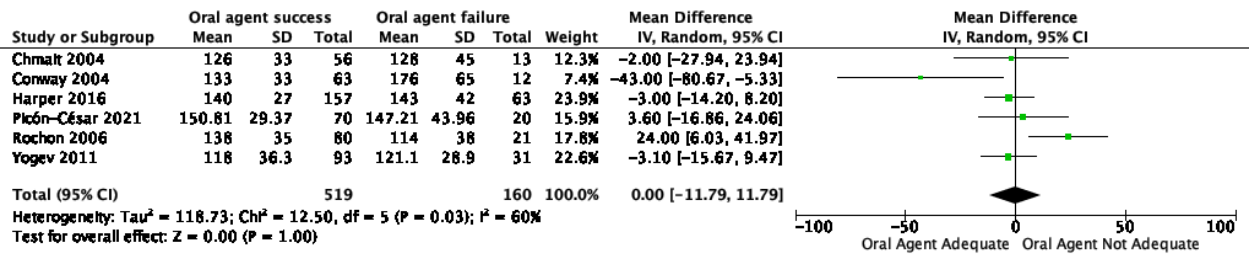
Supplementary Figure 2.8A Forest plot for included studies comparing if oral pharmacological agent was adequate or not adequate for 2-hour glucose



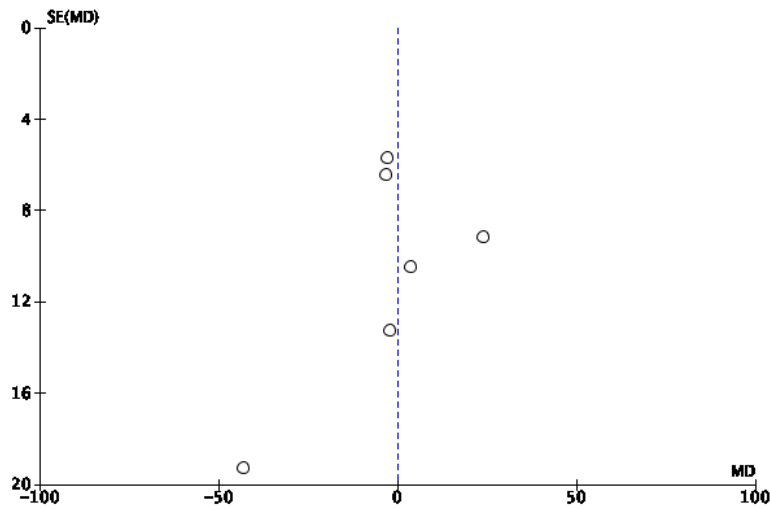
Supplementary Figure 2.8B Funnel Plot for Assessment of Publication Bias



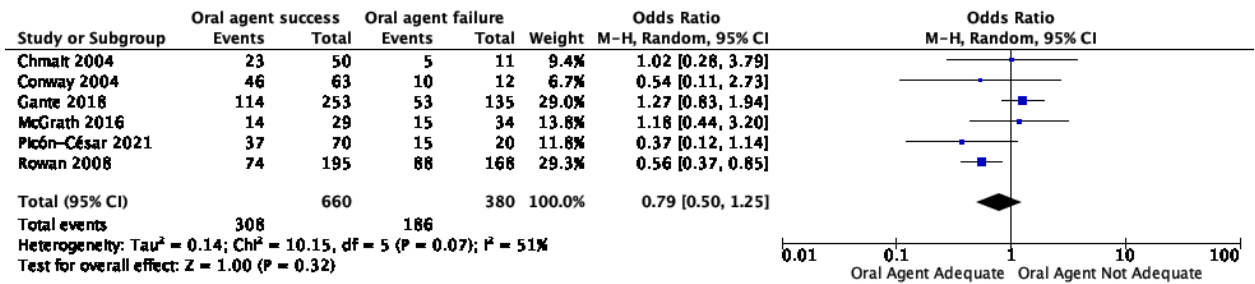
Supplementary Figure 2.9A Forest plot for included studies comparing if oral pharmacological agent was adequate or not adequate for 3-hour glucose



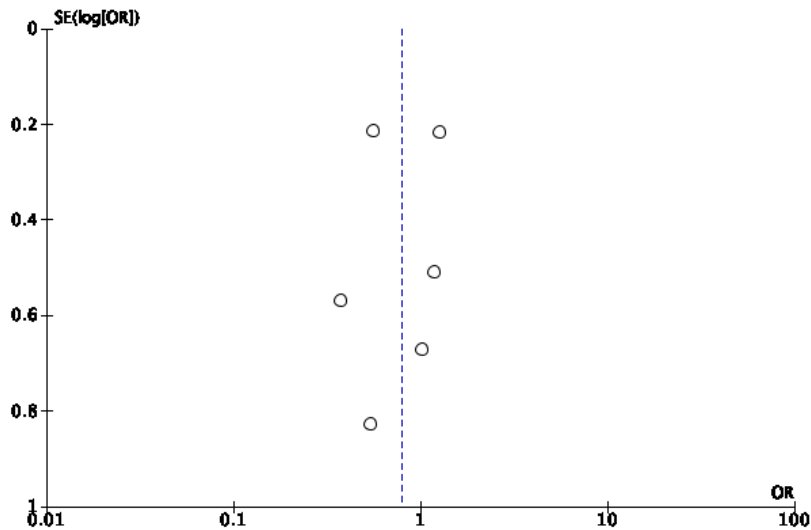
Supplementary Figure 2.9B Funnel Plot for Assessment of Publication Bias



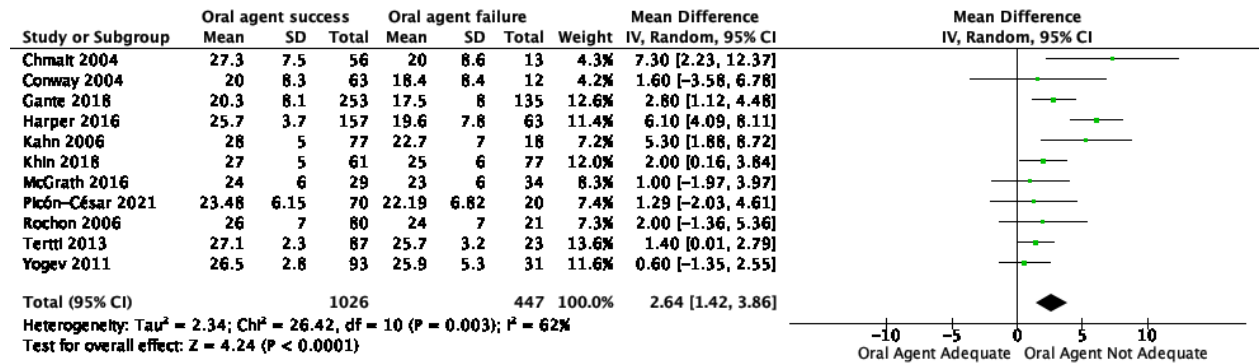
Supplementary Figure 2.10A Forest plot for included studies comparing if oral pharmacological agent was adequate or not adequate for family history of diabetes



Supplementary Figure 2.10B Funnel Plot for Assessment of Publication Bias



Supplementary Figure 2.11A Forest plot for included studies comparing if oral pharmacological agent was adequate or not adequate for gestational age at gestational diabetes diagnosis



Supplementary Figure 2.11B Funnel Plot for Assessment of Publication Bias

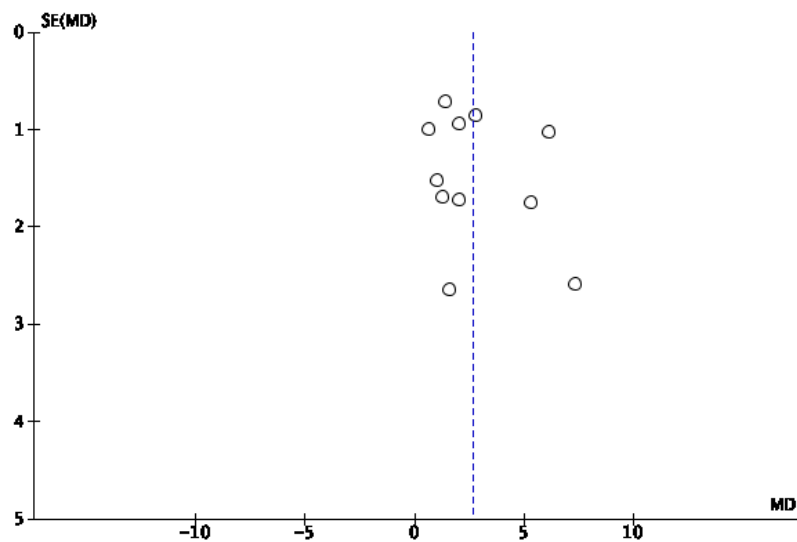
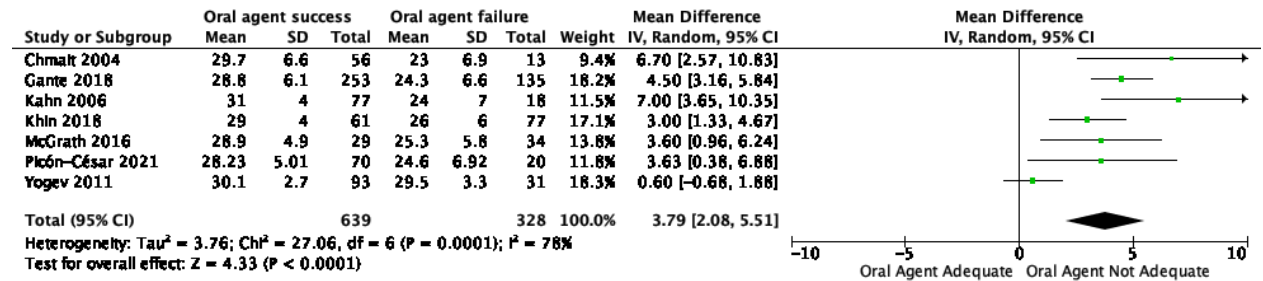
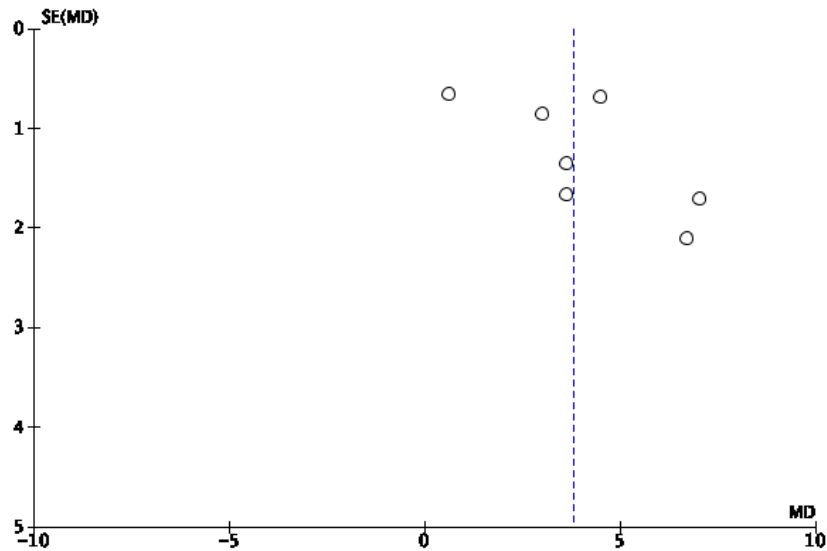


Table 2.12B Forest plot for included studies comparing if oral pharmacological agent was adequate or not adequate for gestational age at initiation of oral pharmacological agent for treatment of GDM



Supplementary Figure 2.12B Funnel Plot for Assessment of Publication Bias



Supplementary Table 1 Narrative summary of studies not included in the meta-analysis

Author	Key findings
<i>Insulin required when diet not adequate</i>	
Berg 2007 ²⁴	The need for insulin treatment increased with increasing BMI. Among women with normal weight (BMI <25 kg/m ²), 9.6% (n=33) required insulin, compared to 31.9% (n=52) in the obese group (p <0.001)
Elnour 2008 ²⁷	The number of abnormal OGTT values, specifically fasting values (≥95 mg/dl) and 1-h values (≥180 mg/dl), contributed significantly to insulin need during the index pregnancy (P<0.05).
Giannubilo 2018 ²⁸	The overall risk of need for insulin therapy was significantly higher in women carrying a male fetus (odds ratio = 1.837; 95% CI, 1.737–2.8775; P = 0.0078)
Gibson 2012 ²⁹	There were no significant differences in age, race, or parity among patients requiring insulin therapy and diet/exercise-controlled GDM. Patients requiring insulin therapy had significantly higher pre-pregnancy BMI, but comparable 1-h glucose tolerance test, gestational age at delivery, and weight gain.
Hillier 2013 ³⁰³⁰	Treatment with insulin more likely in higher BMI groups and non-white ethnicities
Molina-Vega 2020 ³⁷³⁷	Greater BMI was associated with greater odds of needing insulin therapy (OR 1.103; p<0.001). Age (OR 1.019; p=0.429) and pregnancy during winter (OR 0.493; p=0.050, spring (OR 0.626; p=0.159) or summer (0.680; p=0.214), as opposed to during fall were not associated with the need for insulin therapy.
Nguyen 2016 ³⁹³⁹	Maternal predictors of antepartum insulin therapy: Pre-pregnancy BMI (OR 1.03; 95% CI 1.01 – 1.06), Past history of GDM (OR 1.77; 95% CI 1.24–2.56), Diagnosis of GDM <20 weeks gestation (OR 3.32; 95% CI 1.87–6.19), fasting plasma glucose (OR 1.65; 95% CI 1.10–2.47), 2-hour post-OGTT glucose (OR 1.39; 95% CI 0.91–2.14); Both glucose values above local reference range at screening (OR 2.60; 95% CI 1.98 – 3.44) Maternal factors not significantly associated with insulin therapy: Past history of caesarean delivery (OR 1.41; 95% CI 0.96 – 2.08), Past history of macrosomia (OR 0.79; 95%CI 0.88 – 1.46)
Parrettini 2020 ⁴²	Maternal age and distribution of diagnostic values at the OGTT were the only factors that were significantly associated with a risk of need for insulin therapy (p < 0.05).
Wong 2012 ⁴⁷	Women from South-East Asia had the lowest need to start insulin (37.2%), compared with Anglo-Europeans (56.7%, P < 0.001) - SE Asian (37.2%), South Asian (55%), Middle Eastern (51.6%), Anglo-European (56.7%), Pacific Islander (65.5%) - ANOVA p<0.001 Women from South-East Asia had the lowest need for rapid-acting insulin for the management of postprandial hyperglycaemia (30.4% vs. 44.9% for women from Anglo-European background, P = 0.002). Pacific Islanders had the greatest need for insulin therapy, but were started on insulin at a later stage.
Zawiejska 2014 ⁴⁹	Maternal fasting hyperglycaemia ≥5.1 mmol/l increased odds of requiring insulin therapy (OR 3.8 [95% CI 2.3, 6.5]; aOR 2.6 [1.4, 4.9])
<i>Pharmacological therapy required (oral agent and/or insulin) when diet not adequate</i>	

Zhu 2021 ⁵⁴	The strongest predictor of moving from diet to medication was the 2nd trimester FBG, recording an odds ratio of 3.58. This suggests that for every additional 1 mmol/L the FBG was elevated, patients were 3.58 times more likely be medicated for their GDM, controlling for other factors in the model. The other significant predictor was age, with an odds ratio of 1.06.
<i>Genetic predictors of glyburide being inadequate to achieve target glucose values</i>	
Bouchghoul et al 2021 ⁶⁷	CYP2C9 and OATP1B3 genetic polymorphisms The percentage of patients who switched from glyburide to insulin was much higher ($\times 1.8$) in the variant genotype group, although this was not statistically significant: 23.8% (5/21) vs. 13.0% (7/54) in the wild-type genotype group and 19.0% (8/42) in the intermediate group (trend test-logistic regression, $P = 0.24$). The fasting glycaemic control of diabetes with glyburide was, on average, better in the wild-type genotype group than in the intermediate group and the variant group, with a lower percentage of out-of-target blood glucose values
<i>Maternal lipidome responses to metformin and insulin treatment</i>	
Huhtala et al 2020 ⁶⁸	Fasting serum lipidome measured at diagnosis (mean 30 weeks gestation) and at 36 weeks using nuclear magnetic resonance spectroscopy Compared to insulin, metformin treatment of GDM led to higher maternal serum concentrations of triglyceride-rich lipoproteins. Especially triglycerides and cholesterol in VLDL were positively associated with birthweight. Women with high VLDL cholesterol or high apoB/apoA-1 may benefit from insulin treatment over metformin with respect to offspring birthweight