

# The COVID-19 vaccination campaign in Switzerland and its impact on disease spread

## Sensitivity analyses

M. Bekker-Nielsen Dunbar and L. Held

Epidemiology, Biostatistics and Prevention Institute, University of Zurich

E-mail: [maria.dunbar@uzh.ch](mailto:maria.dunbar@uzh.ch)

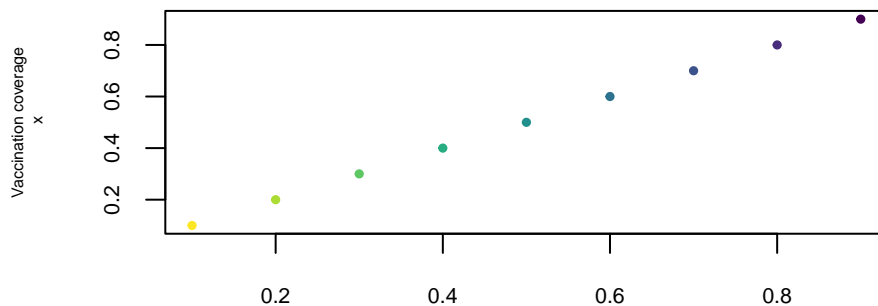
1

---

2 For full information on the work this document supports please see the manuscript  
3 and the study protocol [1]. This supporting document contains sensitivity analyses and  
4 knowledge of the analyses from the main manuscript is assumed.

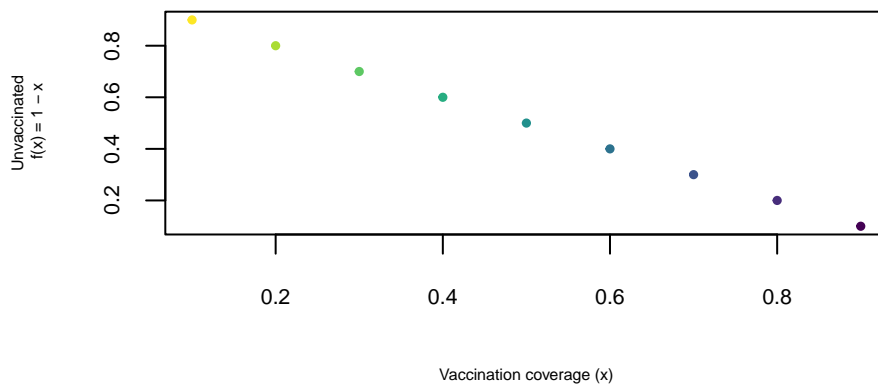
### 5 **1 Ruminations on vaccination coverage**

6 The vaccination coverage takes values between 0 and 1 by definition and construction.



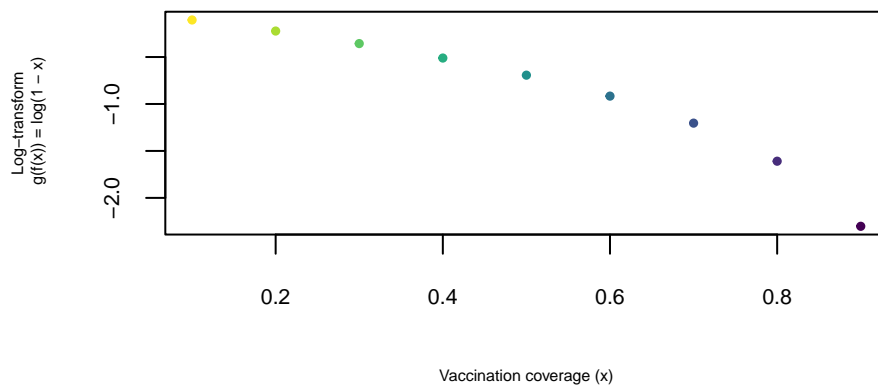
7

8 To obtain the proportion of the population that is unvaccinated we transform the vac-  
9 cination coverage by  $f(x) = 1 - x$ , meaning this also takes values between 0 and 1.



10

11 Then log-transforming the unvaccinated via  $g(f(x)) = \log(1 - x)$ , we obtain negative  
 12 values and the trend goes in the opposite direction.



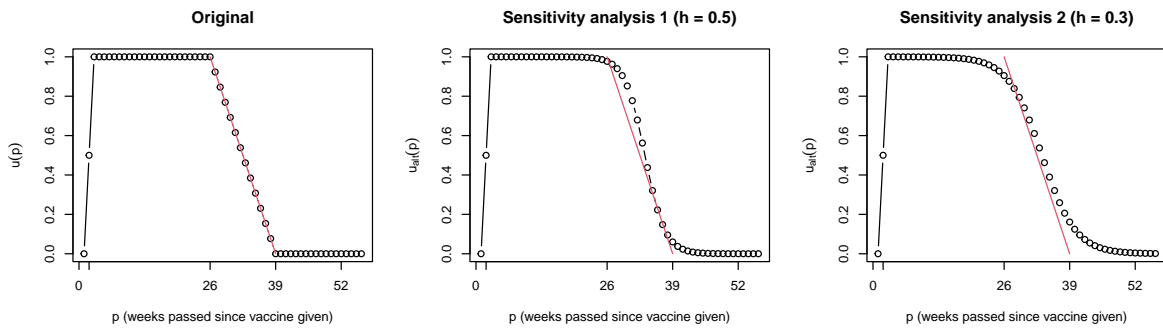
13

14 We see that the higher the vaccination coverage is, the more negative the covariate  
 15 value will be. With a positive effect estimate, a higher proportion of unvaccinated will lead  
 16 to an increase in cases—as would be expected. All other things equal, an increase in pa-  
 17 rameters from including the vaccination coverage would lead to an increase in our model  
 18 comparison measure. However, our exposition and intuition (as outlined in the study proto-  
 19 col) leads us to believe that the model without vaccination coverage (“neither”) should not  
 20 have the lowest value though it has the lowest number of parameters as we believe it to be

21 the most important model effect.

## 22 2 Sensitivity analysis of waning functions

23 We consider the alternative representations of waning outlined in the study protocol  
24 (Figure 1). The results we obtain look similar.



**Figure 1:** Alternative waning functions that could have been used in the construction of the vaccination coverage covariate

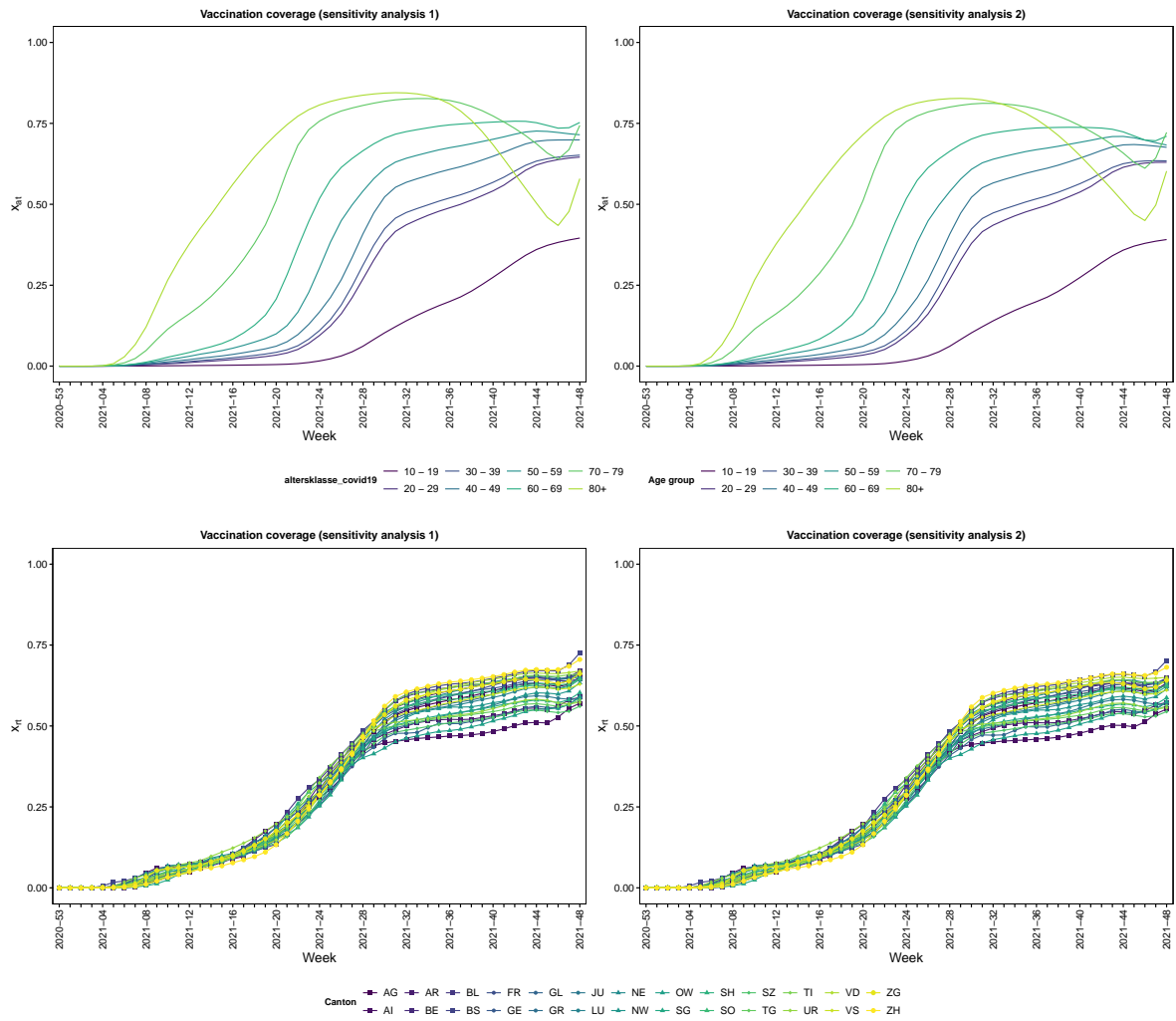


Figure 2: Log-transformed vaccination coverage for age groups (above) and regions (below)

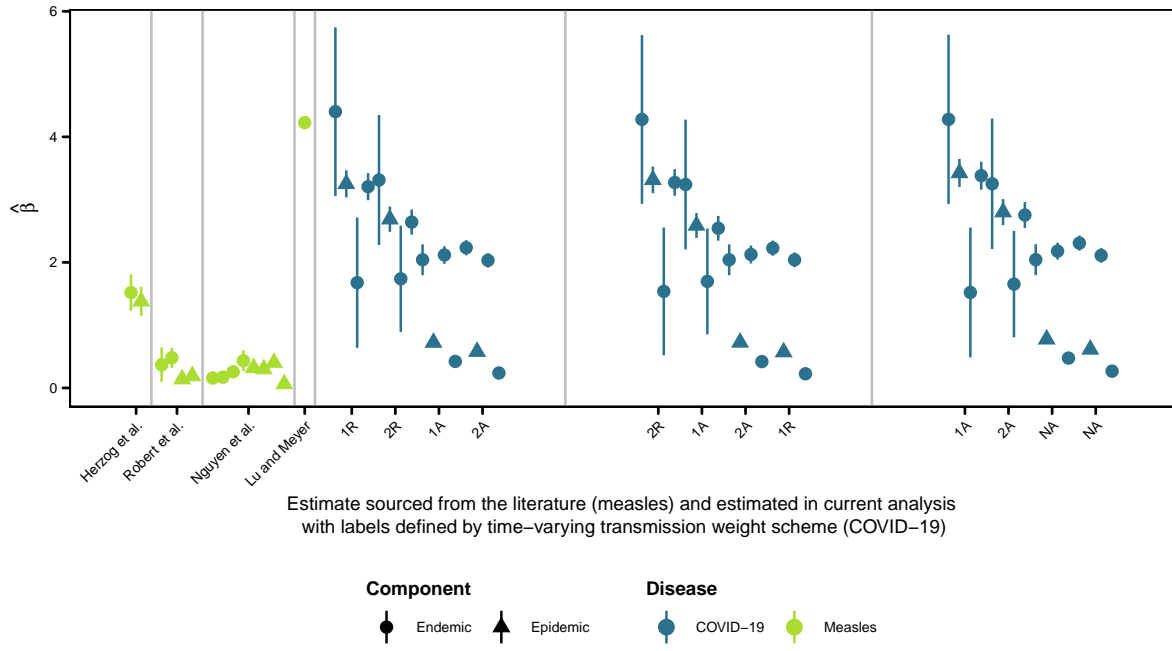
**Table 1:** Vaccination coverage covariate estimates  $\hat{\beta}$  and standard errors (SE) for alternative waning function 1

Weight option		Neither	Endemic	Epidemic	Both	
					Endemic	Epidemic
Region	$w_{r,r'}$ (1R)	–	4.277 (SE 1.344)	3.315 (SE 0.212)	1.538 (SE 1.018)	3.273 (SE 0.212)
	$w_{r,r',t}$ (2R)	–	3.241 (SE 1.034)	2.588 (SE 0.198)	1.698 (SE 0.843)	2.544 (SE 0.197)
Age	$w_{a,a'}$ (1A)	–	2.042 (SE 0.246)	0.725 (SE 0.062)	2.126 (SE 0.143)	0.42 (SE 0.055)
	$w_{a,a',t}$ (2A)	–	2.227 (SE 0.121)	0.571 (SE 0.07)	2.041 (SE 0.117)	0.226 (SE 0.059)

**Table 2:** Vaccination coverage covariate estimates  $\hat{\beta}$  and standard errors (SE) for alternative waning function 2

Weight option		Neither	Endemic	Epidemic	Both	
					Endemic	Epidemic
Region	$w_{r,r'}$ (1R)	–	4.278 (SE 1.35)	3.425 (SE 0.223)	1.521 (SE 1.035)	3.381 (SE 0.223)
	$w_{r,r',t}$ (2R)	–	3.253 (SE 1.039)	2.801 (SE 0.208)	1.654 (SE 0.847)	2.755 (SE 0.207)
Age	$w_{a,a'}$ (1A)	–	2.044 (SE 0.246)	0.775 (SE 0.064)	2.179 (SE 0.134)	0.475 (SE 0.057)
	$w_{a,a',t}$ (2A)	–	2.307 (SE 0.121)	0.613 (SE 0.073)	2.111 (SE 0.115)	0.268 (SE 0.061)

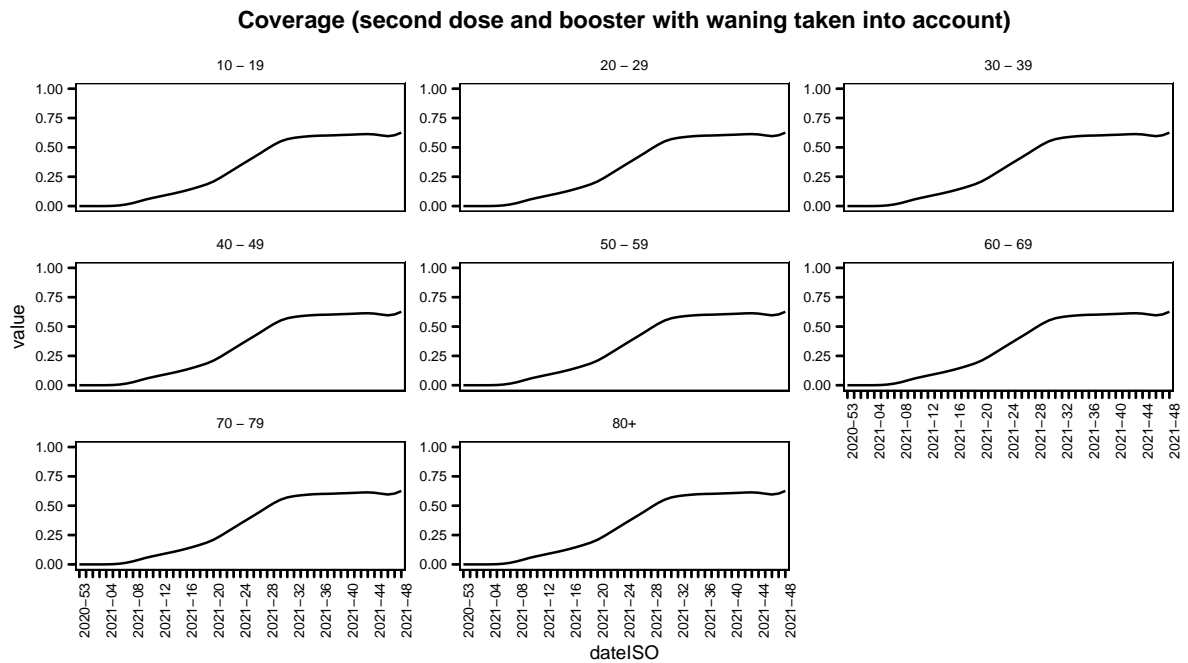
25 We find that the alternative representations of waning outlined in the study protocol  
 26 (Figure 1) yield similar vaccine coverage effect estimates (Tables 1 and 2) as the main  
 27 analysis.



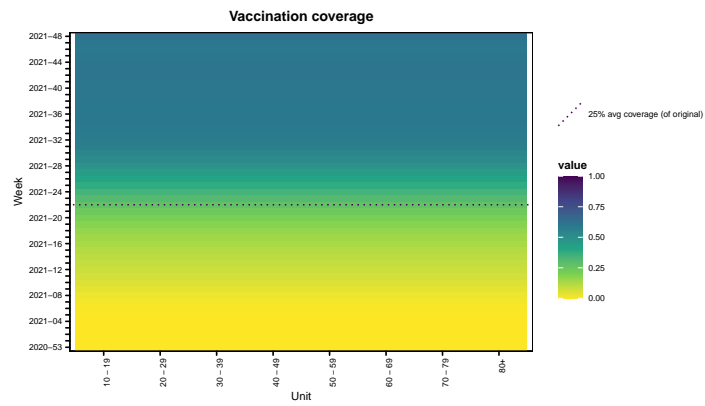
28

### 29 3 Calculation of alternative age-based vaccination coverage

30 We showcase the result of averaging the vaccination coverage across age groups as  
 31 outlined in the study protocol to compare with the manual redistribution:



32



33

34 This looks the same as the redistributed one.

### 35 References

- 36 [1] M. Bekker-Nielsen Dunbar and L. Held. STUDY PROTOCOL: The COVID-19 vaccina-  
 37 tion campaign in Switzerland and its impact on disease spread. *Open Science Founda-*  
 38 *tion*, 2022. DOI:[10.17605/OSF.IO/6X4VK](https://doi.org/10.17605/OSF.IO/6X4VK).