

The COVID-19 vaccination campaign in Switzerland and its impact on disease spread

MODEL – age only Y_{at} , transmission weights $\mathbf{w} = (w_{a,a',t})$

M. Bekker-Nielsen Dunbar and L. Held

Epidemiology, Biostatistics and Prevention Institute, University of Zurich

E-mail: maria.dunbar@uzh.ch

- 1 This document contains additional models to those outlined in the study protocol [1].
 2 Knowledge of the analyses from the main manuscript is assumed. The models introduced
 3 here have only age group effects. This means we are comparing the models:

$$\log(\nu_{at}) = \alpha_a^{(\nu)} + \gamma^{(\nu)\top} \mathbf{z}_{at}^{(\nu)} \quad (\text{neither})$$

$$\log(\phi_{at}) = \alpha_a^{(\phi)} + \gamma^{(\phi)\top} \mathbf{z}_{at}^{(\phi)}$$

$$\log(\nu_{at}) = \alpha_a^{(\nu)} + \beta_a^{(\nu)} \log(1 - x_{at}) + \gamma^{(\nu)\top} \mathbf{z}_{at}^{(\nu)} \quad (\text{endemic})$$

$$\log(\phi_{at}) = \alpha_a^{(\phi)} + \gamma^{(\phi)\top} \mathbf{z}_{at}^{(\phi)}$$

$$\log(\nu_{at}) = \alpha_a^{(\nu)} + \gamma^{(\nu)\top} \mathbf{z}_{at}^{(\nu)} \quad (\text{epidemic})$$

$$\log(\phi_{at}) = \alpha_a^{(\phi)} + \beta_a^{(\phi)} \log(1 - x_{at}) + \gamma^{(\phi)\top} \mathbf{z}_{at}^{(\phi)}$$

$$\log(\nu_{at}) = \alpha_a^{(\nu)} + \beta_a^{(\nu)} \log(1 - x_{at}) + \gamma^{(\nu)\top} \mathbf{z}_{at}^{(\nu)} \quad (\text{both})$$

$$\log(\phi_{at}) = \alpha_a^{(\phi)} + \beta_a^{(\phi)} \log(1 - x_{at}) + \gamma^{(\phi)\top} \mathbf{z}_{at}^{(\phi)}$$

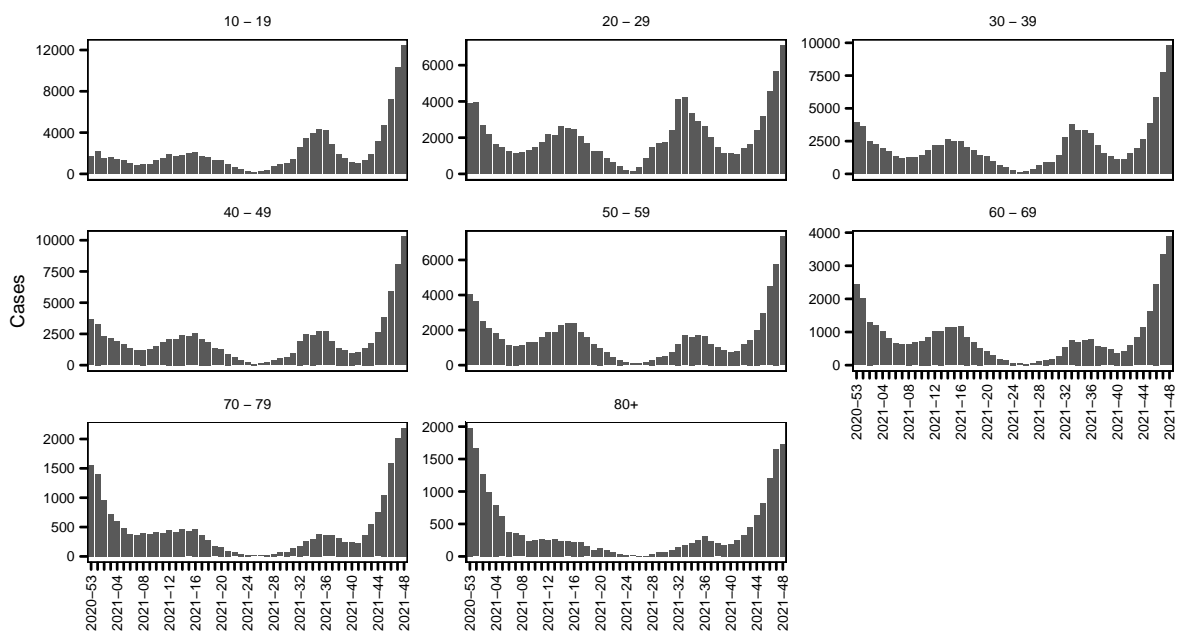
- 4 \mathbf{z}_{rt} is as given in the main manuscript.

5 1 Setup

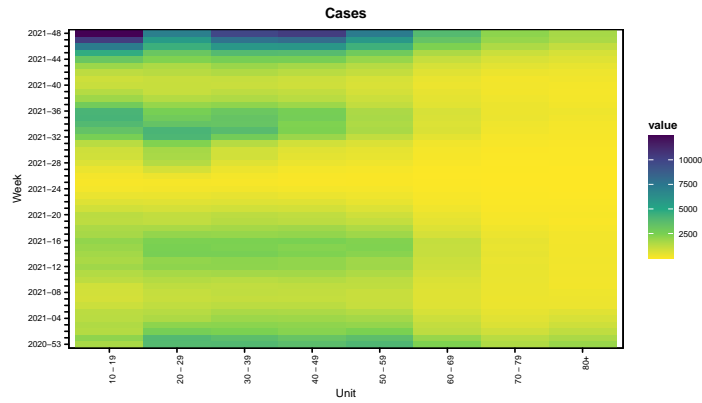
6 The study period is 1st January 2021 to 30th November 2021 given by ISO weeks
7 2020-53 to 2021-48, both weeks included. This is a deviation from the protocol. The new
8 study period is chosen on the basis of the epidemic calendar. This is similar to influenza
9 research in the northern hemisphere; we want our years to start and end such that the en-
10 tire expected wave is captured in a single year. Furthermore, the latter cut-off was chosen
11 due to the presence of Omicron variant COVID-19 in the original study period. The rea-
12 son for this is that the vaccines considered in this work were not created with this variant
13 in mind and may provide less protection against this disease. The study period covers 49
14 observations. An additional deviation from the study protocol is that we do not include the
15 youngest age group, as they do not receive any vaccines in the study period considered.

16 1.1 Outcome

17 The outcome variable is cases. Here we consider all cases (i.e. not limited to hospitali-
18 sations). The cases are not equally distributed across age groups:



19

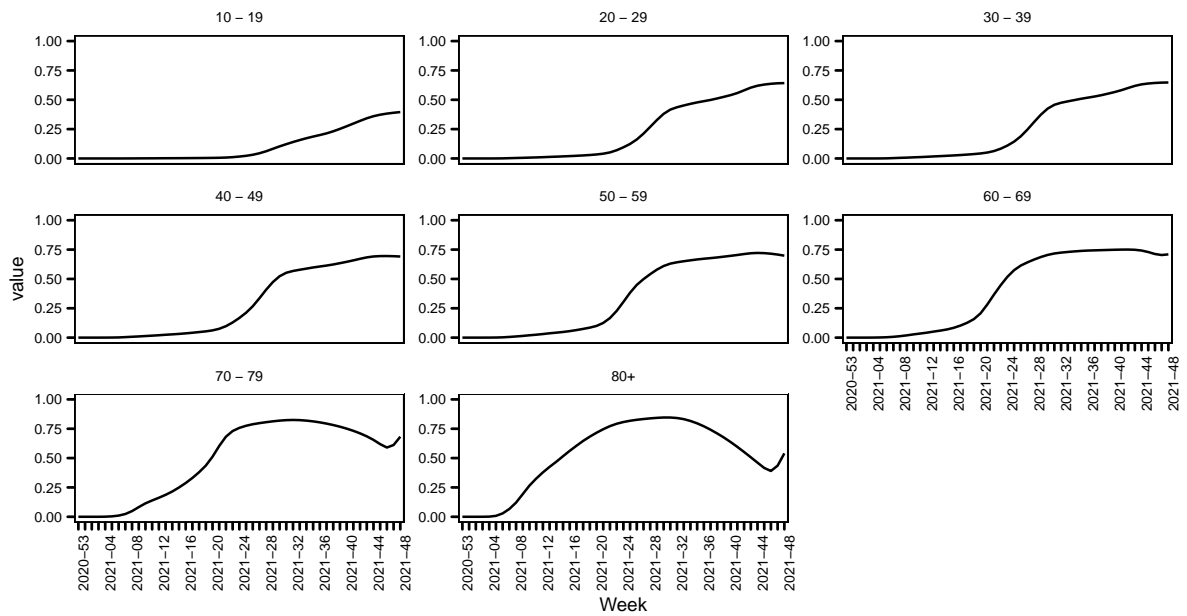


20

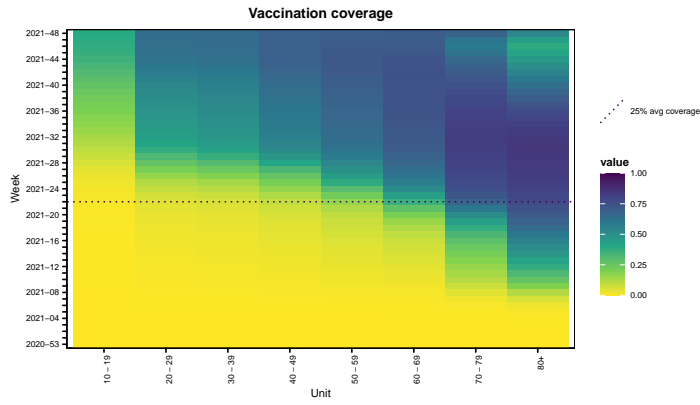
21 1.2 Covariates

22 The vaccination coverage looks as follows (the patterns are not so surprising consider-
 23 ing Switzerland followed an age-based distribution scheme).

Coverage (second dose and booster with waning taken into account)



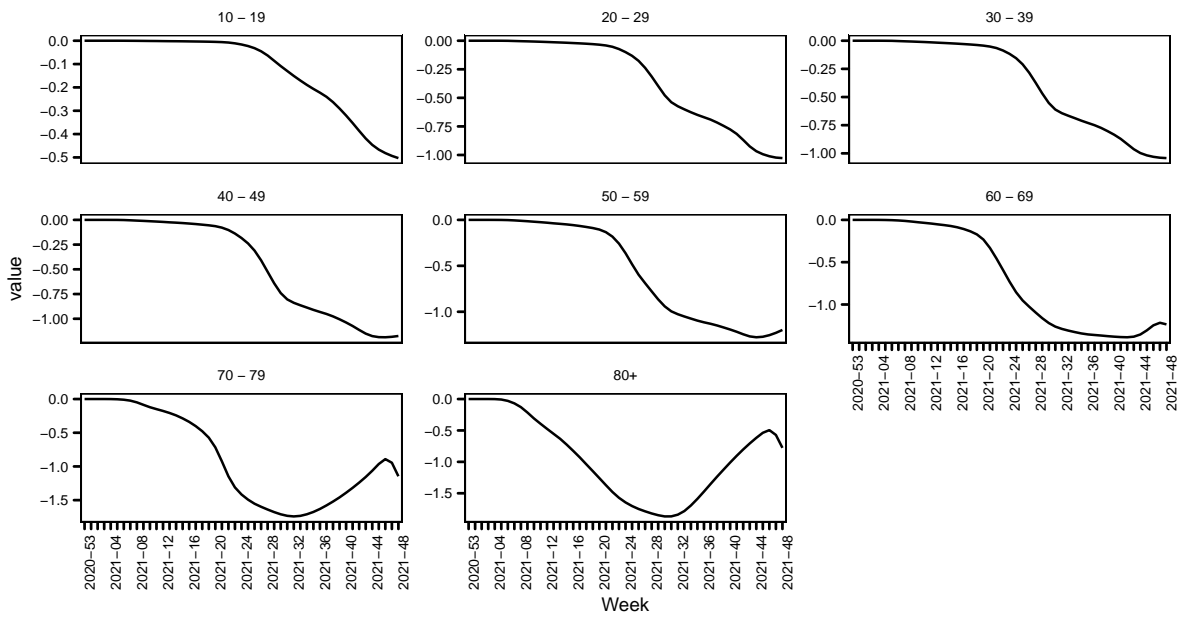
24



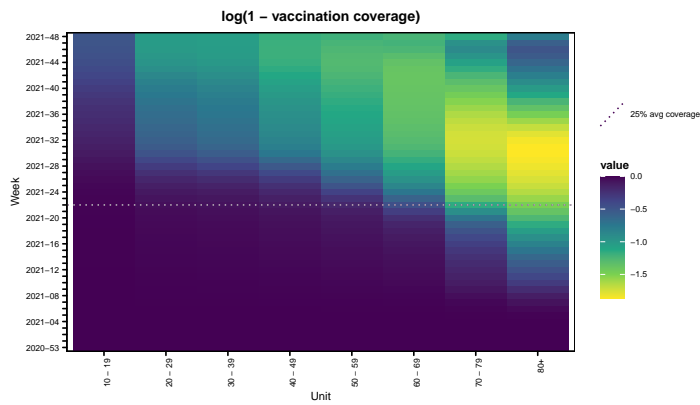
25

26 Transformed by $f(x) = \log(1 - x)$ this looks like

log(1 - vaccination coverage)



27



28

29 **2 Results overview**

30 The following table provides the estimated effects of vaccination coverage for models
 31 with and without time-varying transmission weights.

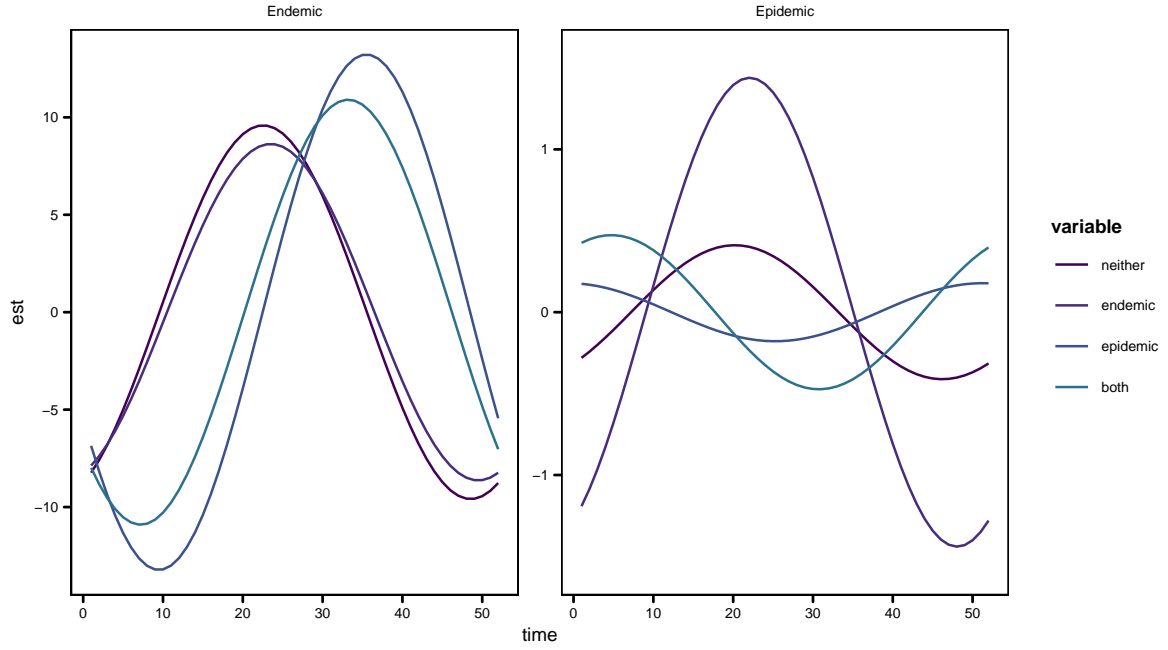
Weights	Model	Endemic	Epidemic	ℓ	DSS
Constant	Neither			-2639.142	18.572
Constant	Endemic	2.042 (SE 0.246)		-2598.267	20.585
Constant	Epidemic		0.722 (SE 0.062)	-2618.674	16.085
32 Constant	Both	2.118 (SE 0.14)	0.422 (SE 0.055)	-2529.263	18.605
Varying	Neither			-2703.612	21.222
Varying	Endemic	2.234 (SE 0.121)		-2569.63	18.454
Varying	Epidemic		0.578 (SE 0.07)	-2670.896	23.896
Varying	Both	2.033 (SE 0.116)	0.238 (SE 0.059)	-2561.504	19.611

33 **2.1 Time-constant age group transmission weights**

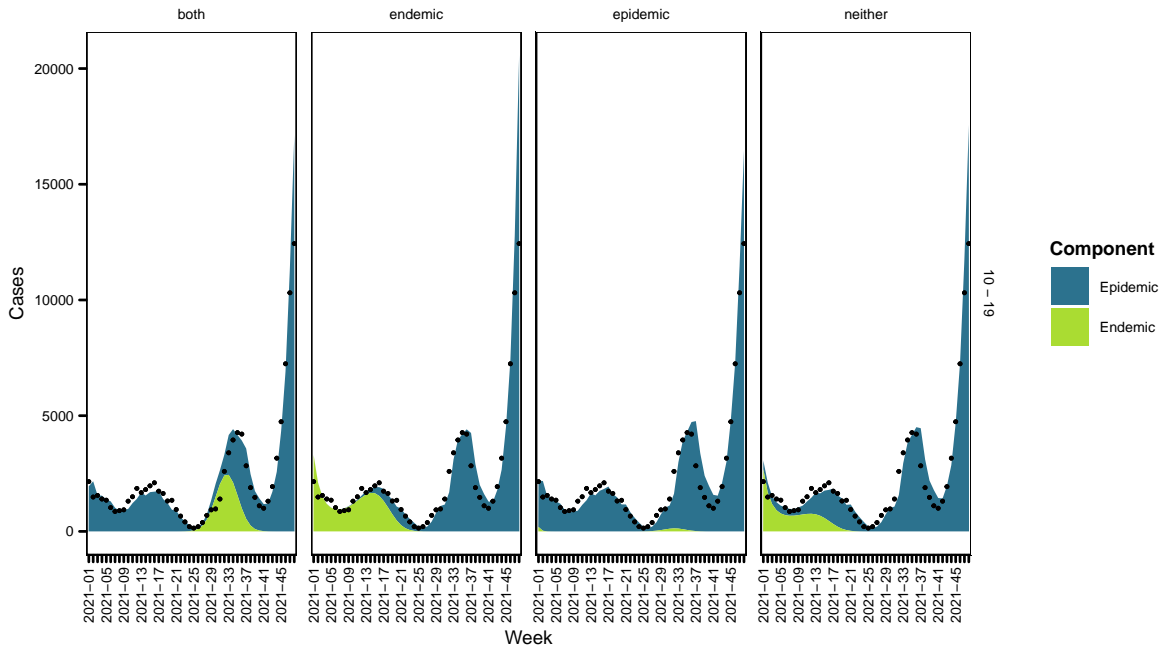
34 First we present the results of the modelling with the time-constant transmission weights.
 35 Due to diverging effects when including fixed effects of age in the endemic component, we
 36 remove those effects.

	neither	endemic	epidemic	both
α_{10-19}^{ϕ}	-0.35 (SE 0.253)	-1.536 (SE 0.251)	0.146 (SE 0.041)	-0.082 (SE 0.038)
α_{20-29}^{ϕ}	-0.128 (SE 0.253)	-1.305 (SE 0.25)	0.496 (SE 0.045)	0.162 (SE 0.043)
α_{30-39}^{ϕ}	-0.283 (SE 0.255)	-1.47 (SE 0.251)	0.414 (SE 0.046)	0.149 (SE 0.042)
α_{40-49}^{ϕ}	-0.648 (SE 0.26)	-1.854 (SE 0.252)	0.19 (SE 0.049)	-0.044 (SE 0.043)
α_{50-59}^{ϕ}	-0.679 (SE 0.265)	-1.892 (SE 0.253)	0.283 (SE 0.053)	0.041 (SE 0.045)
α_{60-69}^{ϕ}	-0.97 (SE 0.265)	-2.154 (SE 0.25)	0.101 (SE 0.057)	-0.148 (SE 0.049)
α_{70-79}^{ϕ}	-0.812 (SE 0.258)	-1.938 (SE 0.247)	0.326 (SE 0.063)	0.078 (SE 0.053)
α_{80+}^{ϕ}	-0.418 (SE 0.255)	-1.49 (SE 0.246)	0.757 (SE 0.066)	0.514 (SE 0.055)
$\gamma_{\text{time}}^{\phi}$	0.058 (SE 0.023)	0.158 (SE 0.021)	0.027 (SE 0.003)	0.029 (SE 0.002)
$\gamma_{\sin(2\pi t/52)}^{\phi}$	0.265 (SE 0.135)	0.659 (SE 0.109)	-0.016 (SE 0.044)	0.256 (SE 0.042)
$\gamma_{\cos(2\pi t/52)}^{\phi}$	-0.315 (SE 0.22)	-1.28 (SE 0.201)	0.178 (SE 0.026)	0.398 (SE 0.027)
α_{10-19}^{ν}	-7.352 (SE 2.288)	-3.214 (SE 0.837)		
α_{20-29}^{ν}	-7.294 (SE 2.29)	-3.162 (SE 0.836)		
α_{30-39}^{ν}	-7.373 (SE 2.249)	-3.306 (SE 0.835)		
α_{40-49}^{ν}	-7.256 (SE 2.212)	-3.255 (SE 0.833)		
α_{50-59}^{ν}	-7.311 (SE 2.181)	-3.372 (SE 0.831)		
α_{60-69}^{ν}	-7.627 (SE 2.162)	-3.71 (SE 0.83)		
α_{70-79}^{ν}	-7.975 (SE 2.148)	-3.893 (SE 0.83)		
α_{80+}^{ν}	-7.611 (SE 2.137)	-3.296 (SE 0.832)		
$\gamma_{\text{time}}^{\nu}$	-1.117 (SE 0.129)	-0.93 (SE 0.057)	-0.623 (SE 0.059)	-0.059 (SE 0.118)
$\gamma_{\sin(2\pi t/52)}^{\nu}$	3.878 (SE 0.66)	2.57 (SE 0.24)	-12.054 (SE 0.773)	-8.338 (SE 1.267)
$\gamma_{\cos(2\pi t/52)}^{\nu}$	-8.768 (SE 0.959)	-8.242 (SE 0.5)	-5.444 (SE 0.308)	-7.03 (SE 0.204)
ψ	0.079 (SE 0.006)	0.063 (SE 0.005)	0.071 (SE 0.005)	0.044 (SE 0.003)
$\beta^{(\nu)}$		2.042 (SE 0.246)		2.118 (SE 0.14)
$\beta^{(\phi)}$			0.722 (SE 0.062)	0.422 (SE 0.055)

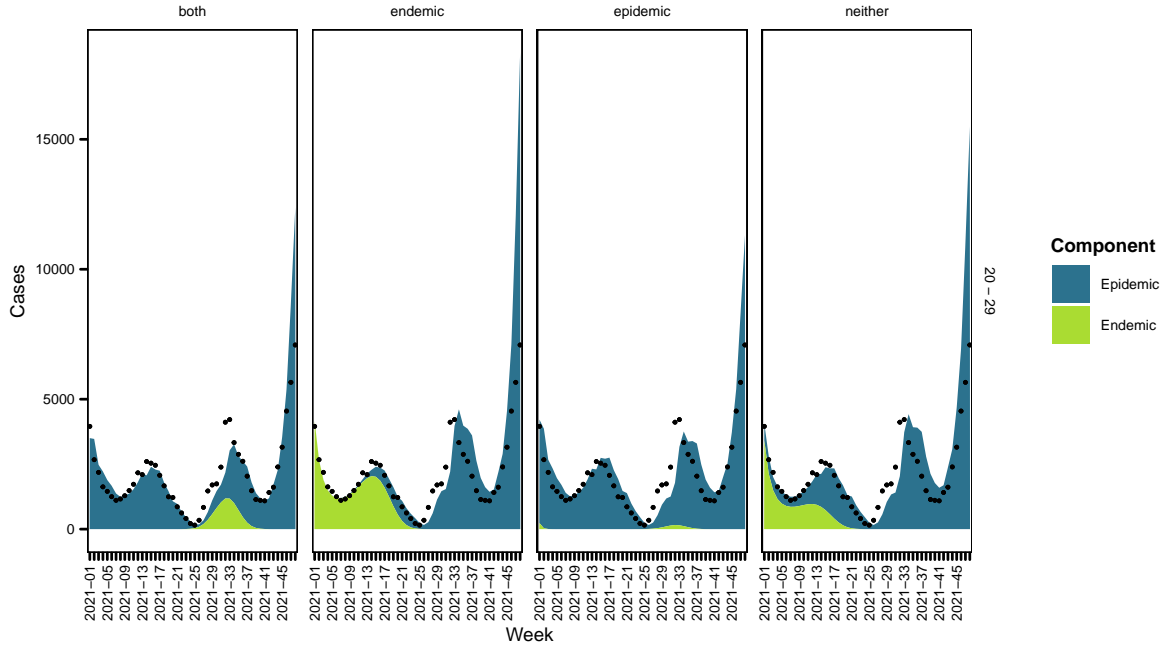
37



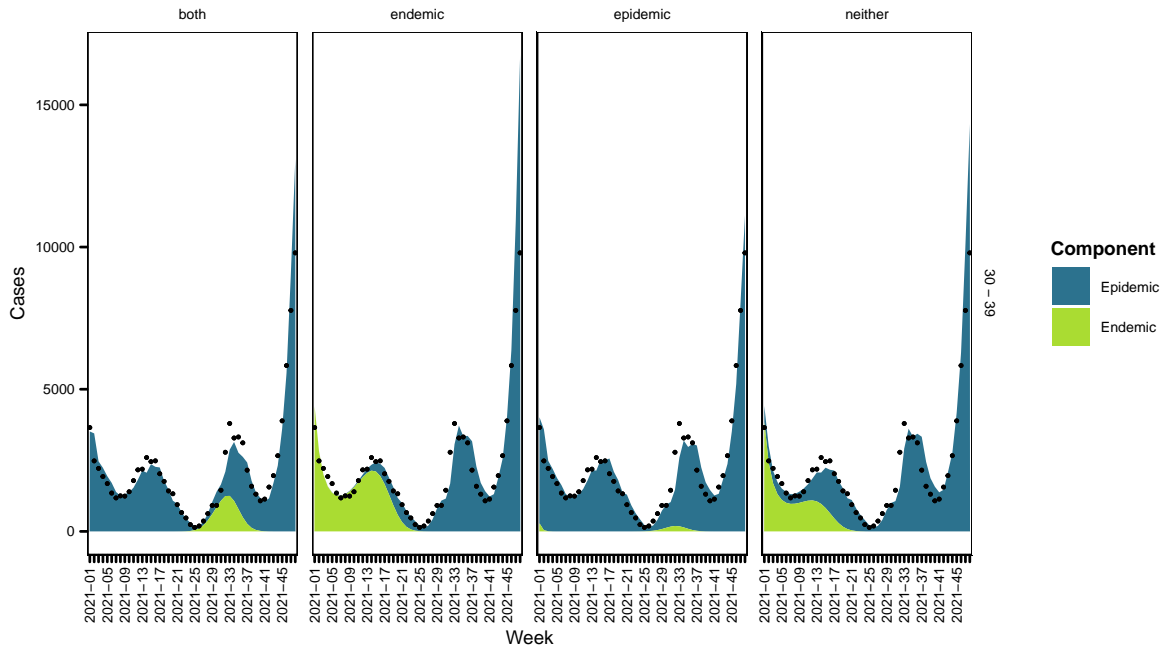
38



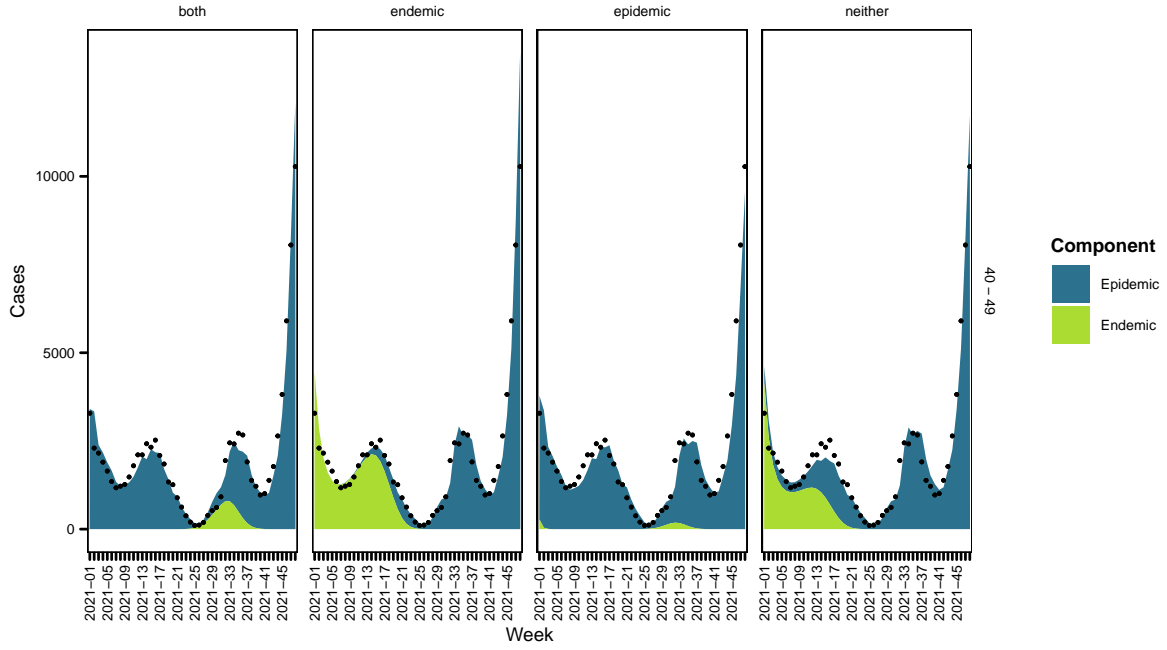
39



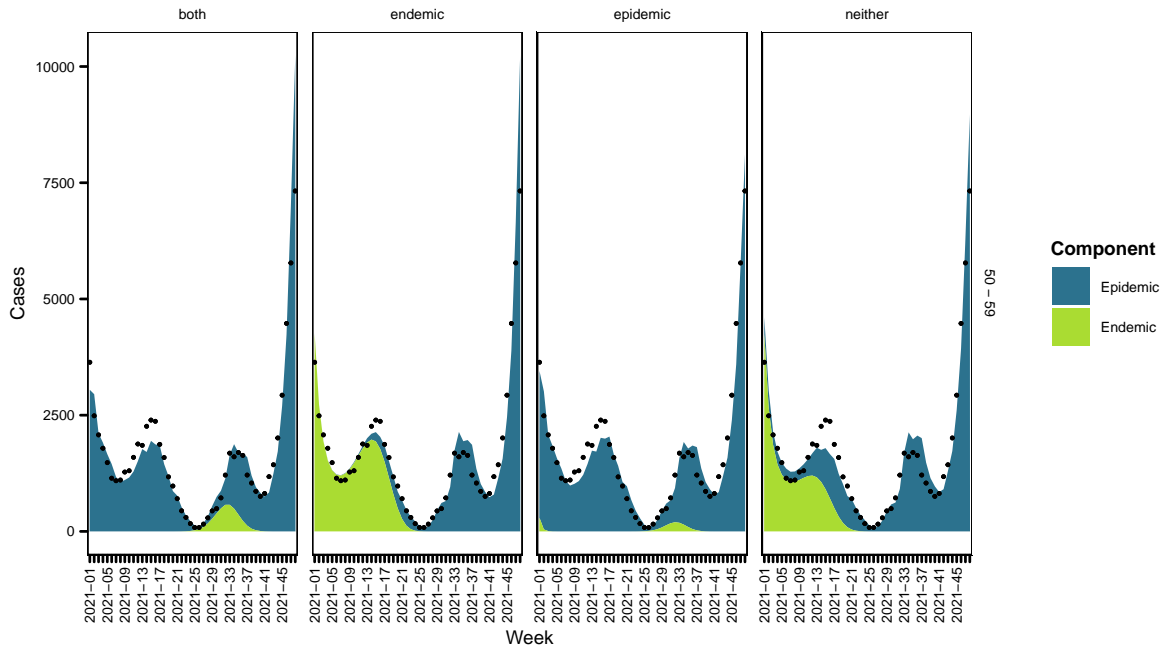
40



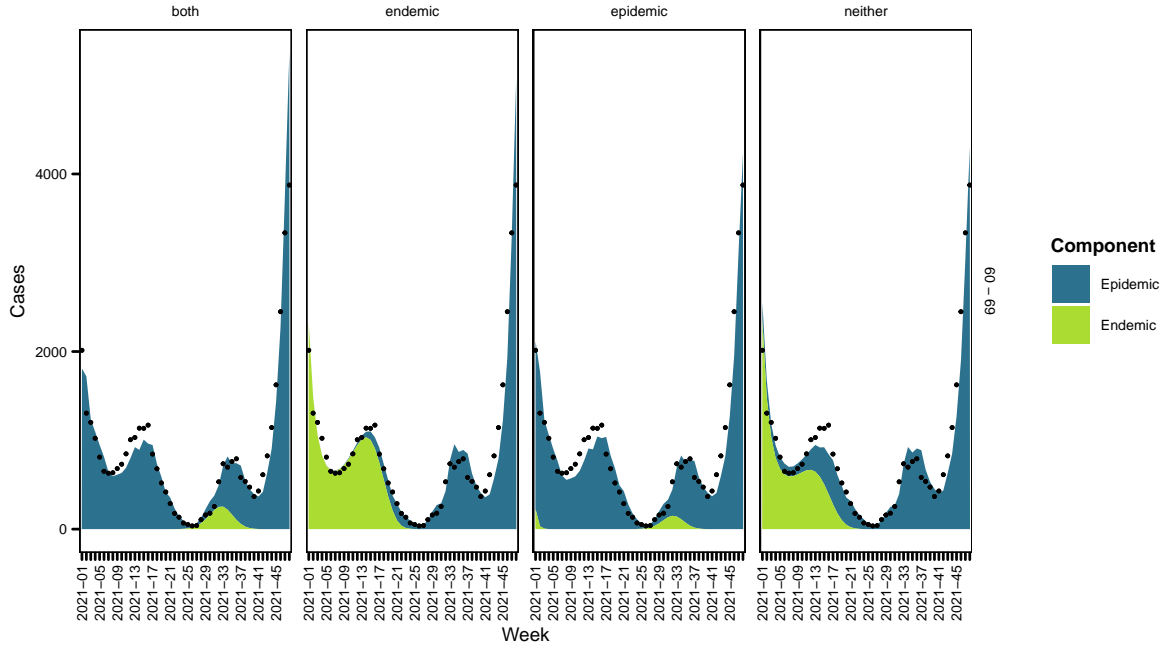
41



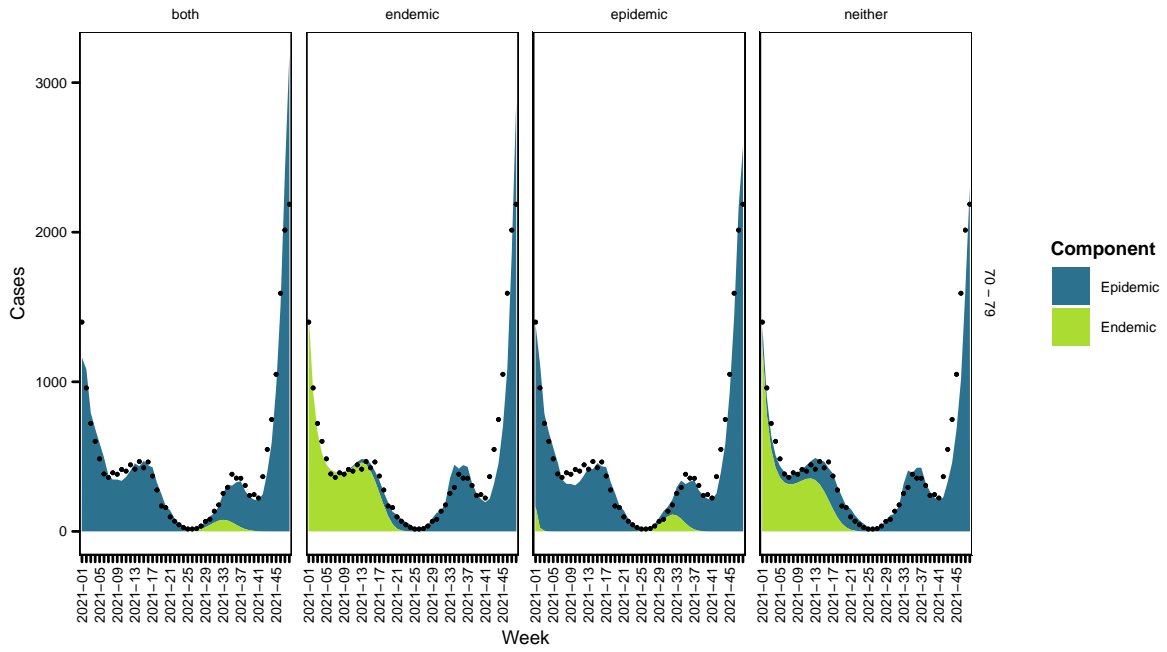
42



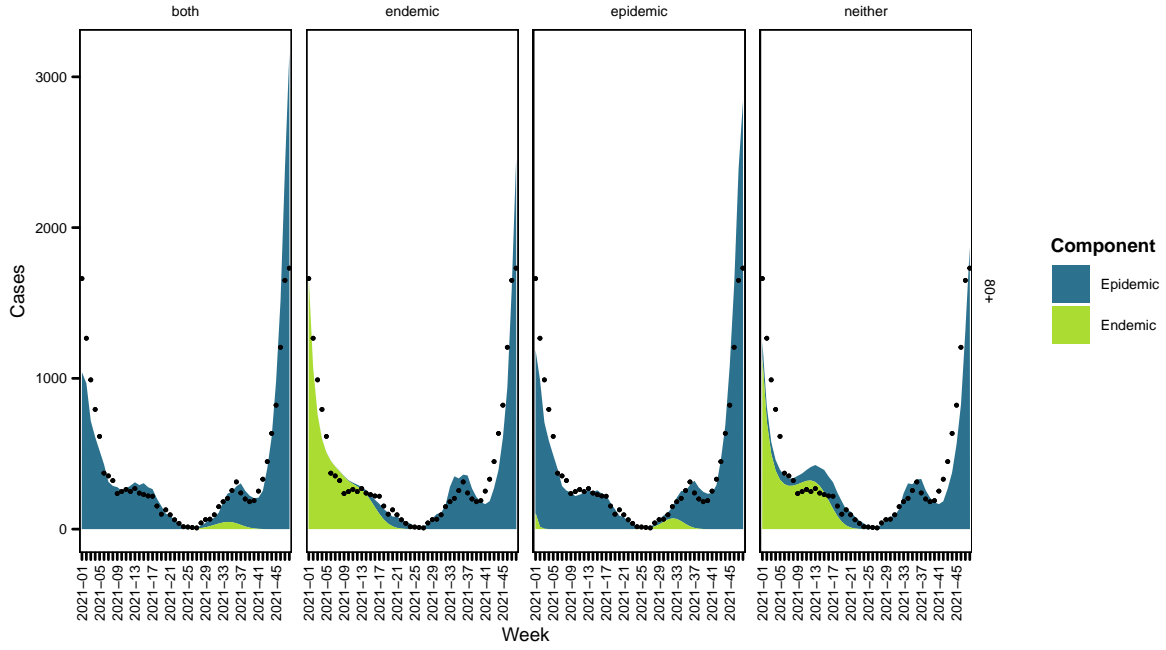
43



44



45

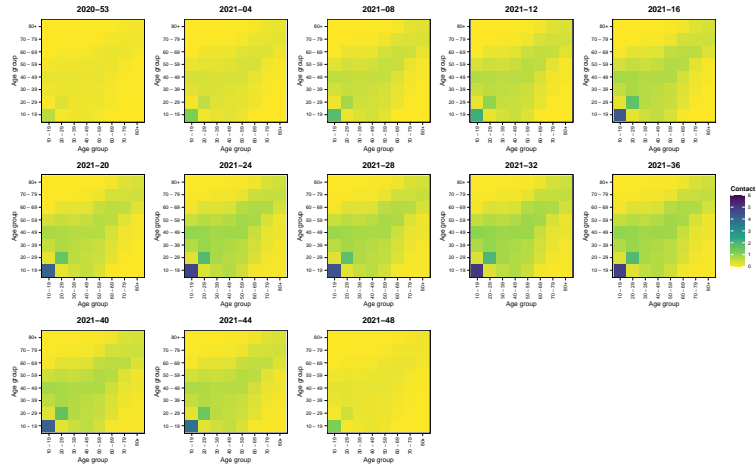


46

47 **2.2 Time-varying age group transmission weights**

48 Now the model contains the time-varying transmission weights. A snapshot is shown

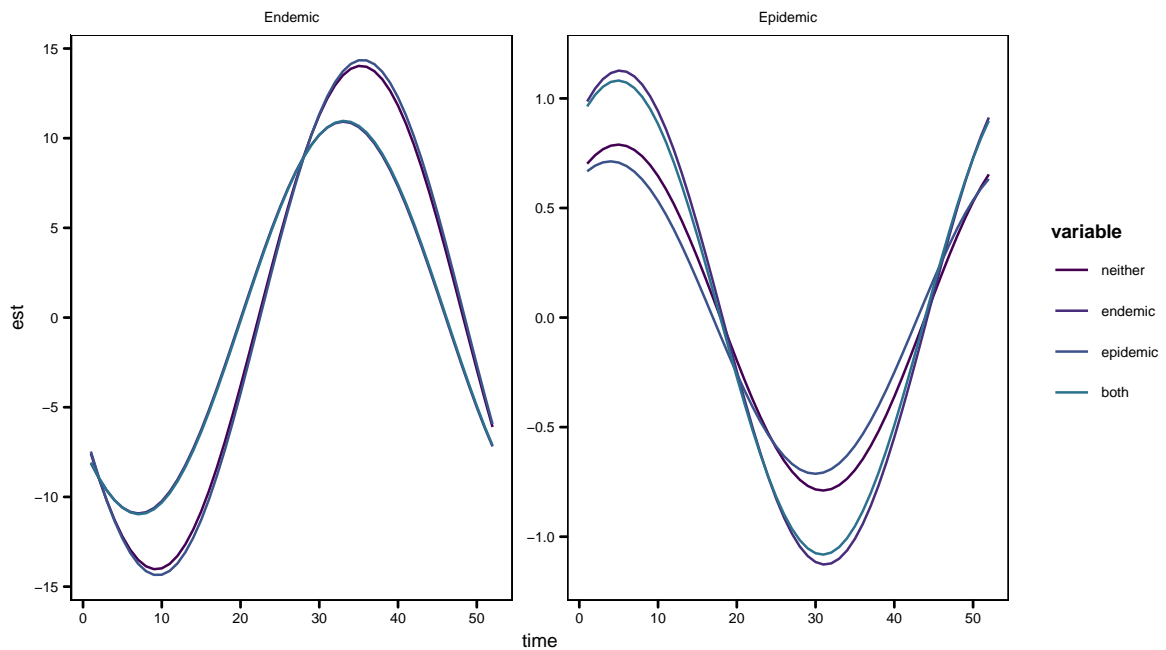
49 below



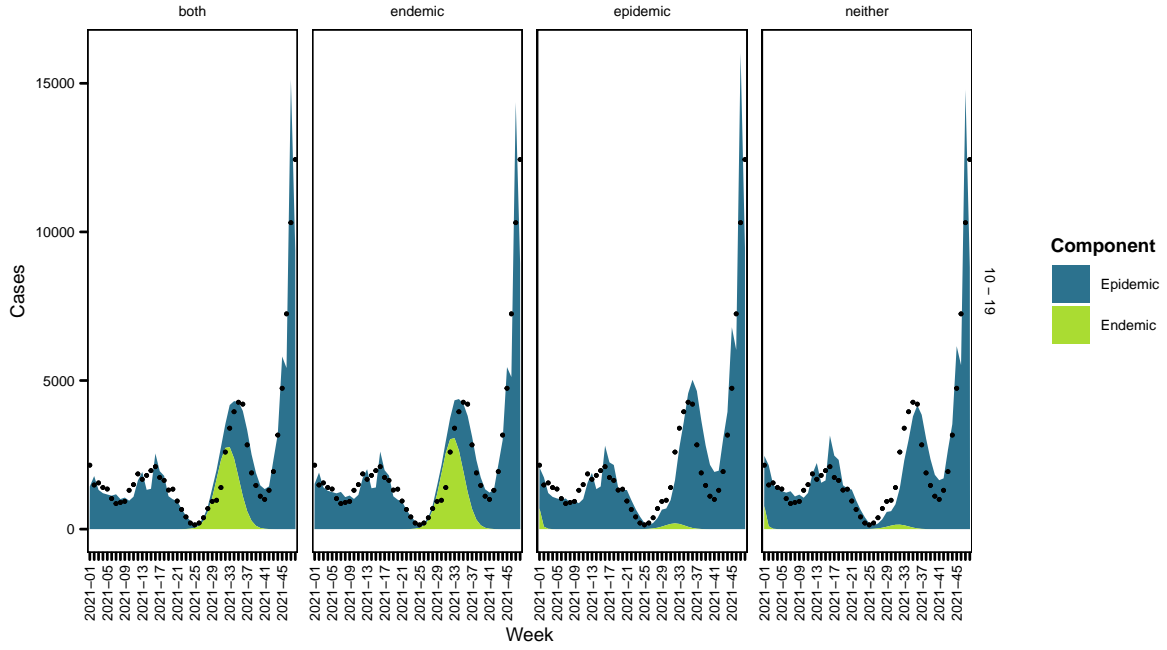
50

	neither	endemic	epidemic	both
α_{10-19}^{ϕ}	-1.429 (SE 0.051)	-1.681 (SE 0.041)	-1.357 (SE 0.048)	-1.625 (SE 0.042)
α_{20-29}^{ϕ}	-0.931 (SE 0.053)	-1.239 (SE 0.042)	-0.753 (SE 0.053)	-1.145 (SE 0.047)
α_{30-39}^{ϕ}	-0.974 (SE 0.053)	-1.167 (SE 0.04)	-0.769 (SE 0.054)	-1.073 (SE 0.046)
α_{40-49}^{ϕ}	-1.296 (SE 0.052)	-1.406 (SE 0.039)	-1.031 (SE 0.057)	-1.296 (SE 0.047)
α_{50-59}^{ϕ}	-1.257 (SE 0.053)	-1.338 (SE 0.039)	-0.948 (SE 0.061)	-1.215 (SE 0.049)
α_{60-69}^{ϕ}	-1.449 (SE 0.053)	-1.5 (SE 0.039)	-1.082 (SE 0.066)	-1.354 (SE 0.053)
α_{70-79}^{ϕ}	-1.196 (SE 0.054)	-1.21 (SE 0.04)	-0.766 (SE 0.072)	-1.04 (SE 0.058)
α_{80+}^{ϕ}	-0.541 (SE 0.054)	-0.535 (SE 0.04)	-0.084 (SE 0.077)	-0.358 (SE 0.06)
$\gamma_{\text{time}}^{\phi}$	0.018 (SE 0.003)	0.024 (SE 0.002)	0.029 (SE 0.003)	0.028 (SE 0.002)
$\gamma_{\sin(2\pi t/52)}^{\phi}$	0.443 (SE 0.053)	0.661 (SE 0.042)	0.329 (SE 0.051)	0.604 (SE 0.044)
$\gamma_{\cos(2\pi t/52)}^{\phi}$	0.653 (SE 0.034)	0.913 (SE 0.028)	0.633 (SE 0.03)	0.897 (SE 0.028)
$\gamma_{\text{time}}^{\nu}$	-0.715 (SE 0.023)	-0.033 (SE 0.105)	-0.706 (SE 0.021)	-0.053 (SE 0.105)
$\gamma_{\sin(2\pi t/52)}^{\nu}$	-12.641 (SE 0.531)	-8.225 (SE 1.141)	-13.084 (SE 0.427)	-8.334 (SE 1.134)
$\gamma_{\cos(2\pi t/52)}^{\nu}$	-6.101 (SE 0.337)	-7.185 (SE 0.183)	-5.937 (SE 0.27)	-7.127 (SE 0.182)
ψ	0.11 (SE 0.008)	0.055 (SE 0.004)	0.094 (SE 0.007)	0.053 (SE 0.004)
$\beta^{(\nu)}$		2.234 (SE 0.121)		2.033 (SE 0.116)
$\beta^{(\phi)}$			0.578 (SE 0.07)	0.238 (SE 0.059)

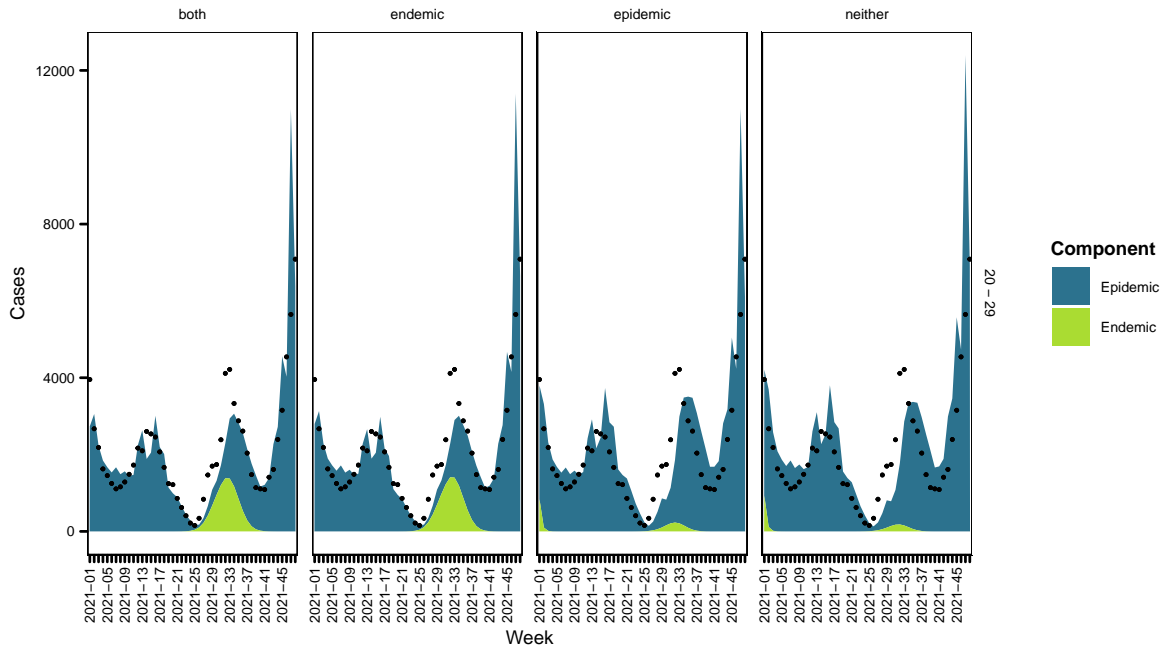
51



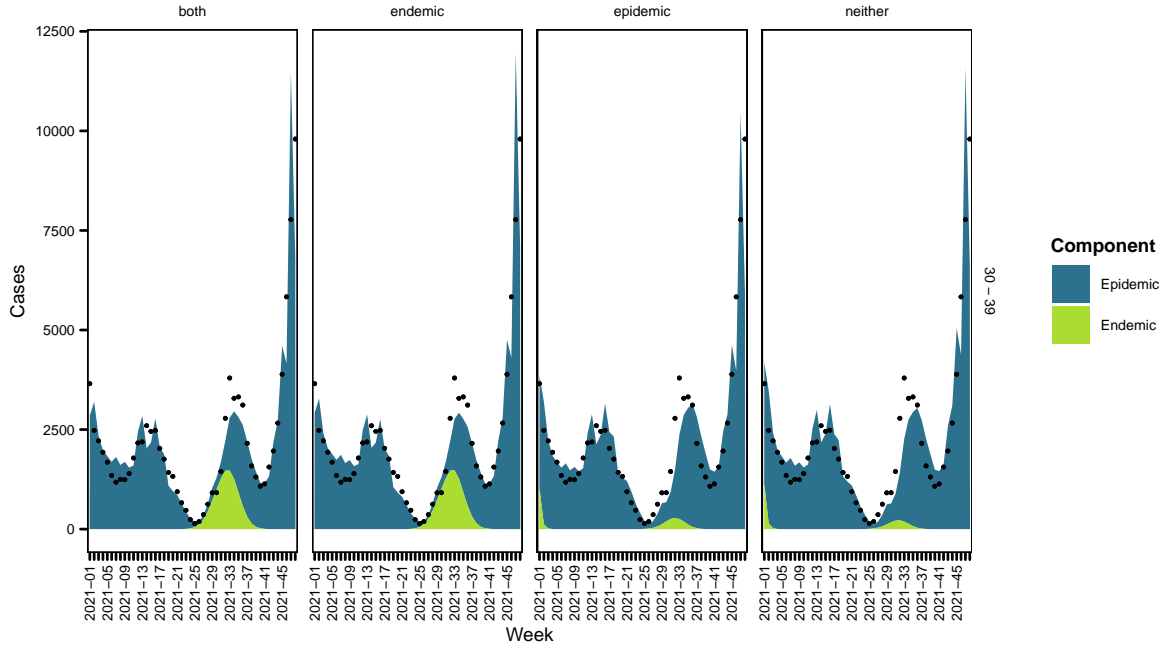
52



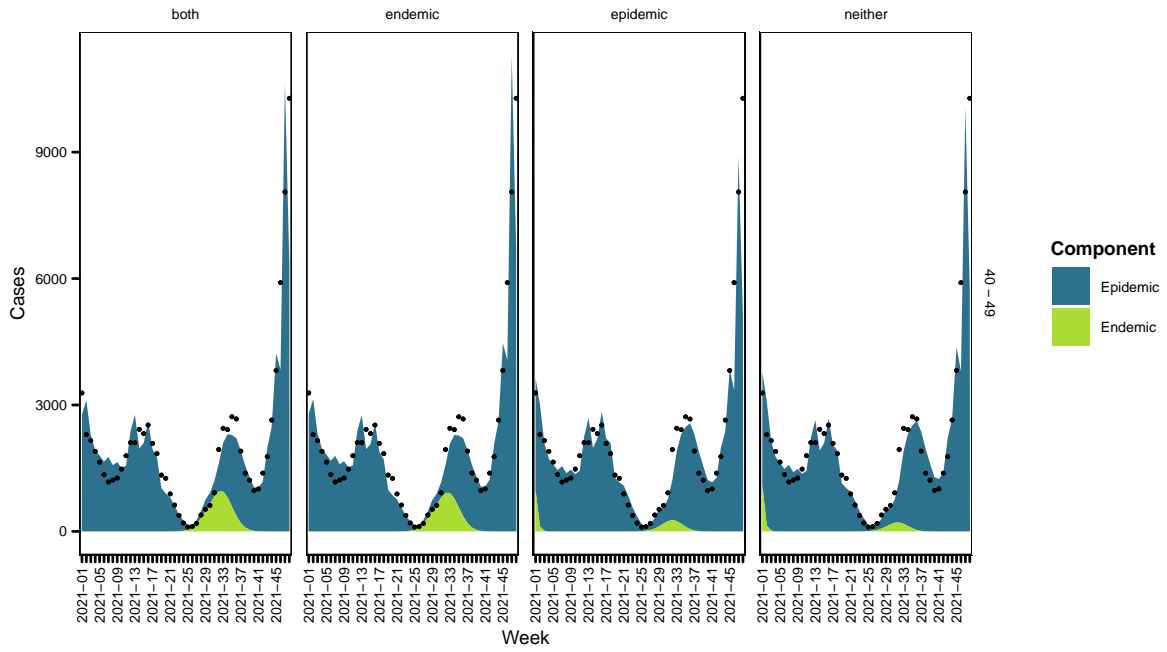
53



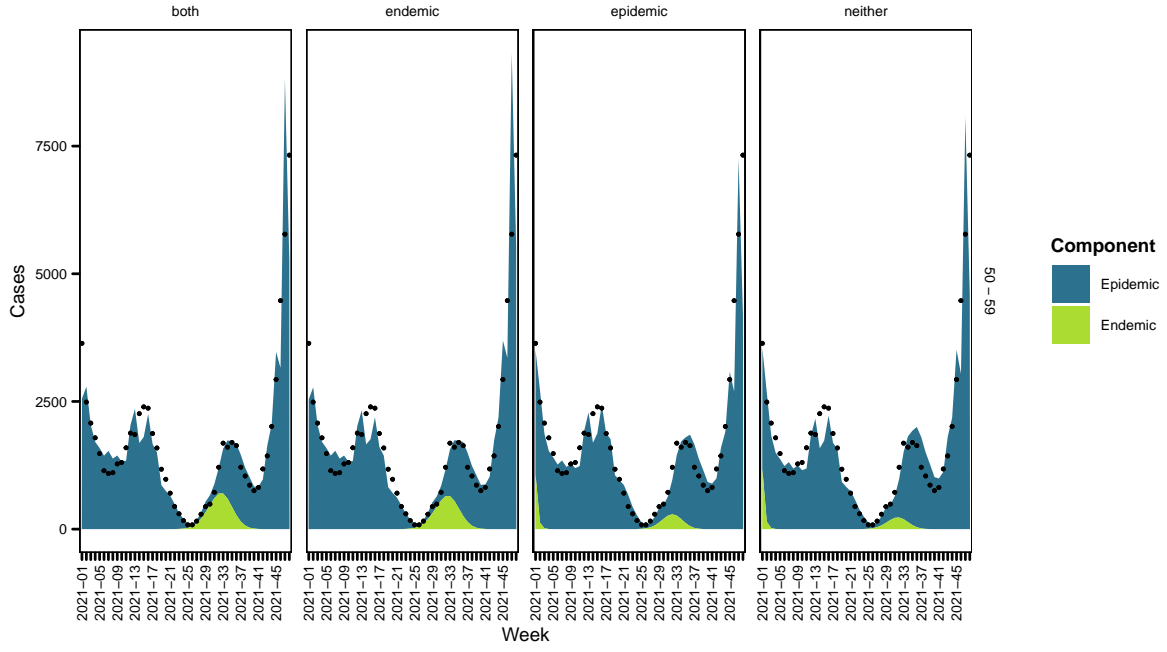
54



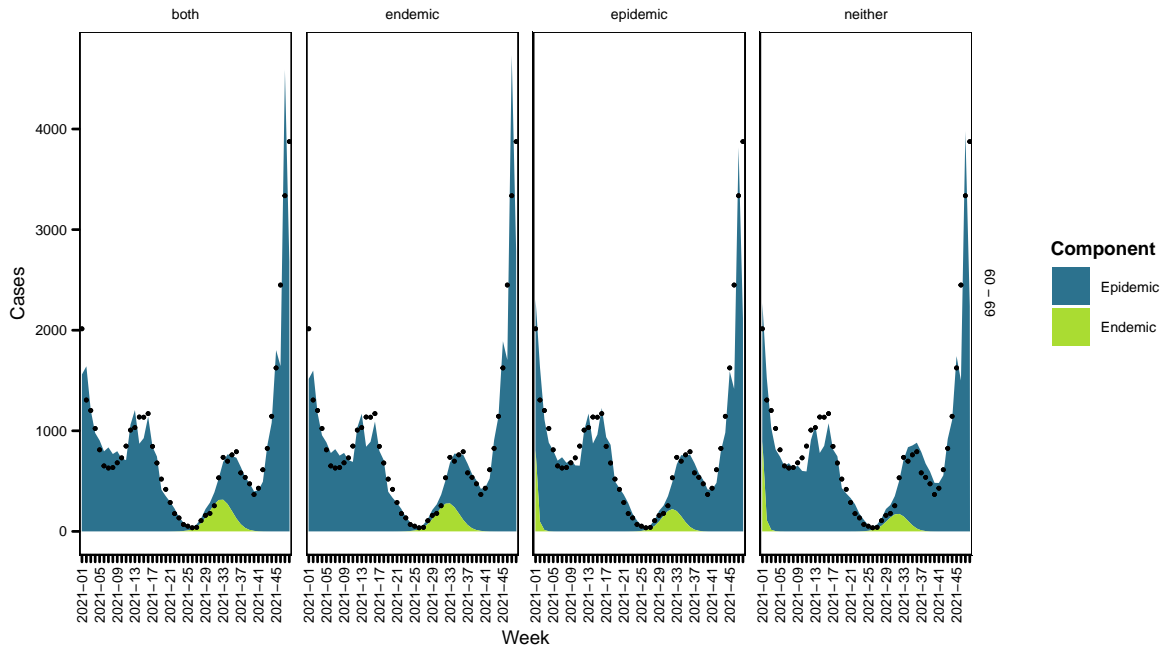
55



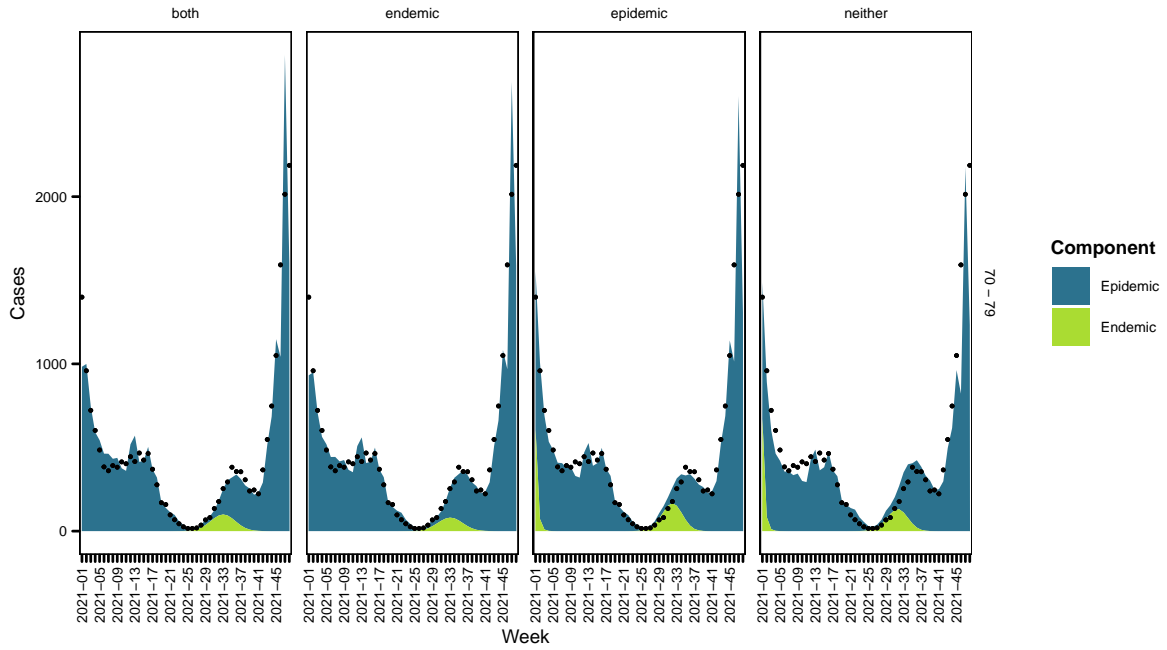
56



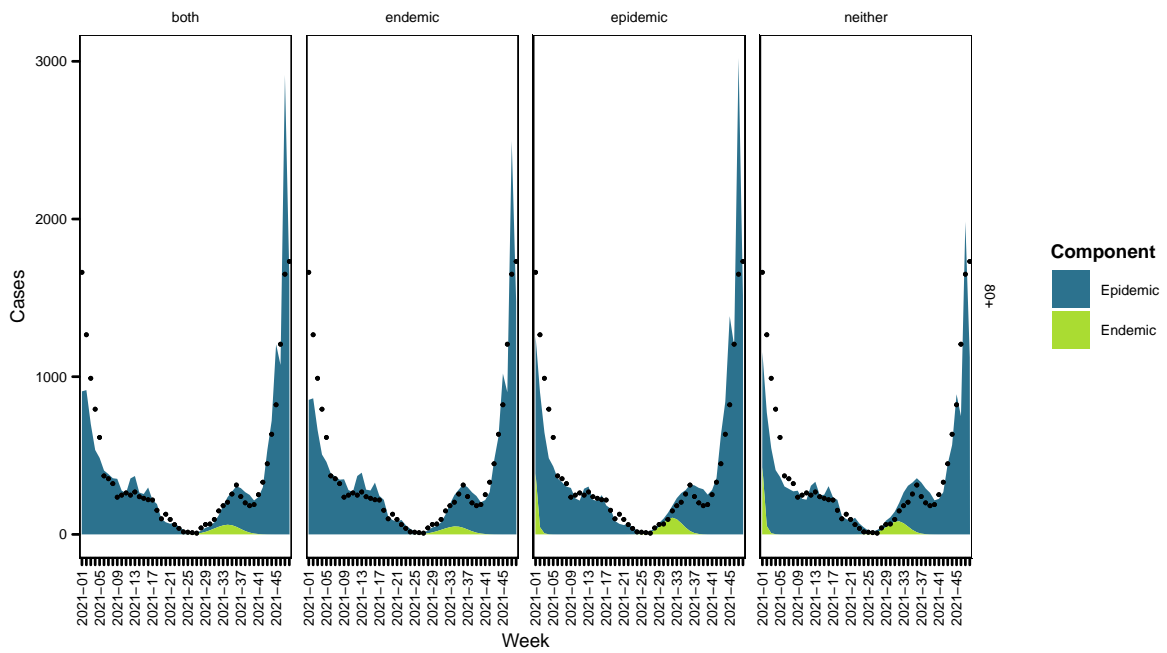
57



58



59

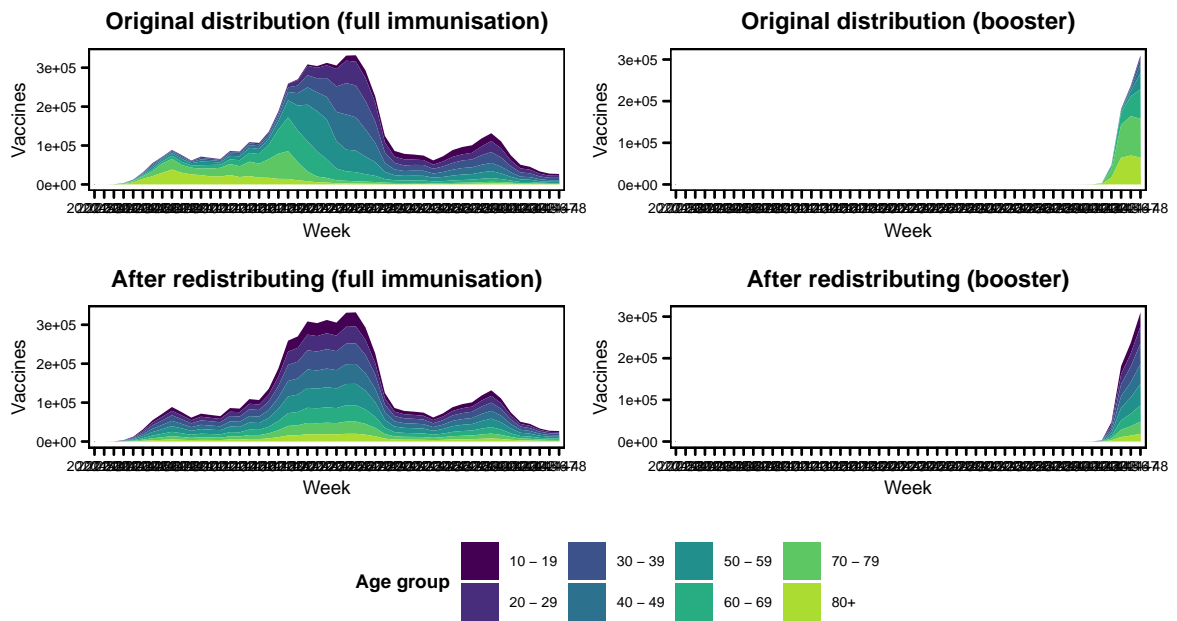


60

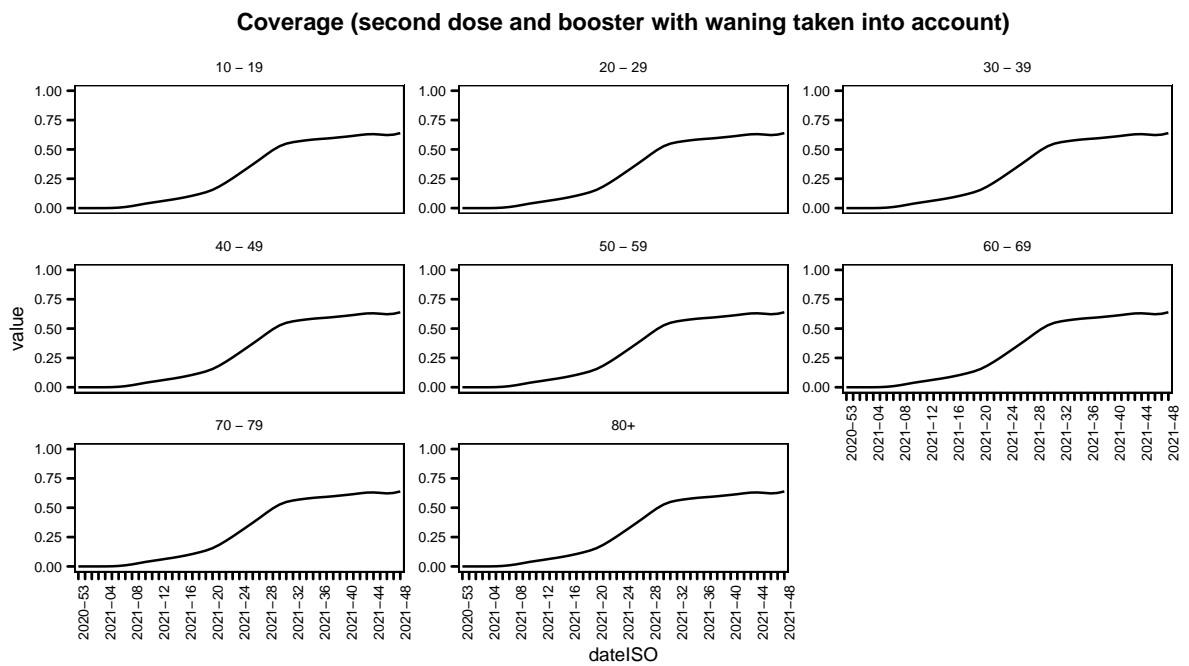
61 3 Scenario analysis

62 Now we consider the effects of an alternative distribution scheme of vaccination. At
 63 each time point we count the total number of vaccines given and to evaluate the effects
 64 of not following an age-based distribution scheme, we distribute them across age groups

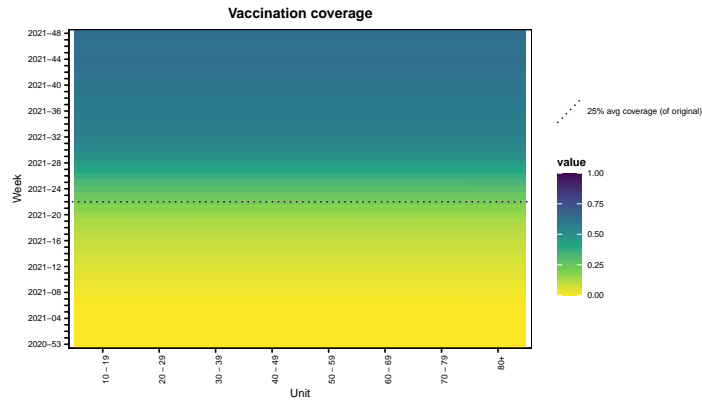
65 proportional to the population size of the age group.



66



67



68

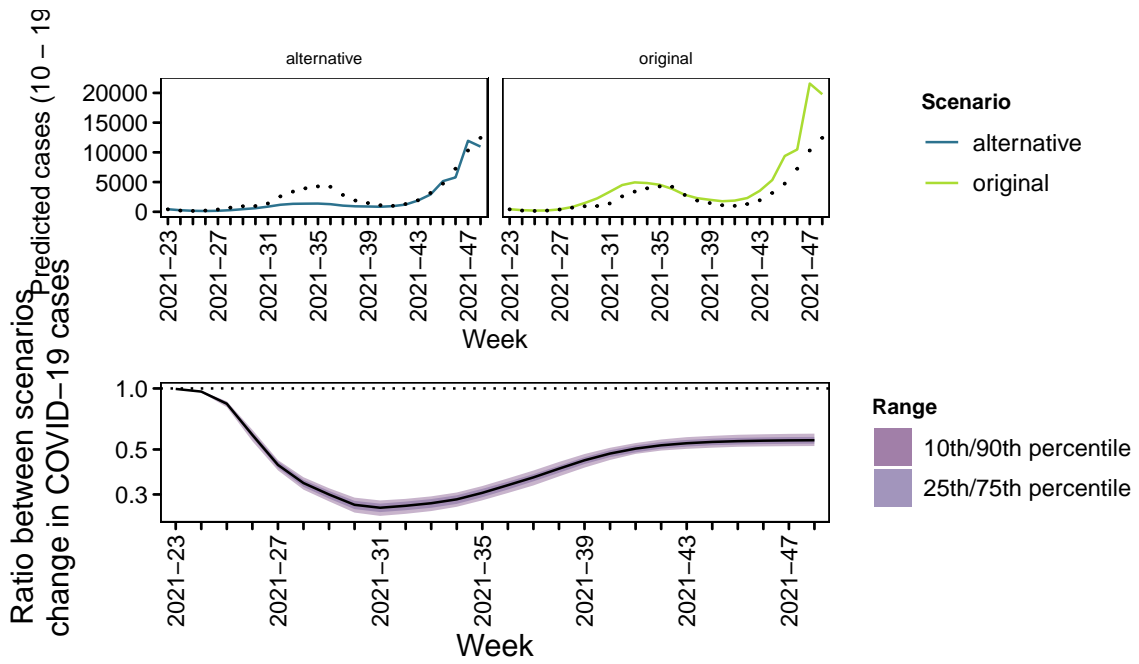
69 3.1 Predicted cases

70 Under the assumption that the study period covers the outbreak, we calculate the pre-
 71 dicted number of COVID-19 cases under the alternative vaccination coverage scenario sce-
 72 nario. This is using the same methods we have considered in previous work [see 2–4]. The
 73 final size of the outbreak is given (Table 1). The weekly predicted cases for the model with
 74 vaccination coverage in the endemic component with time-varying weights are presented
 75 as this was the best fitting model as measured by DSS. We compare the predictions un-
 76 der the true vaccination coverage (as observed by BAG) and the alternative scenario of
 77 redistributed coverage. The ratio is the ratio of predicted cases under the alternative vac-
 78 cination coverage scenario against predicted cases under the observed vaccination coverage
 79 scenario.

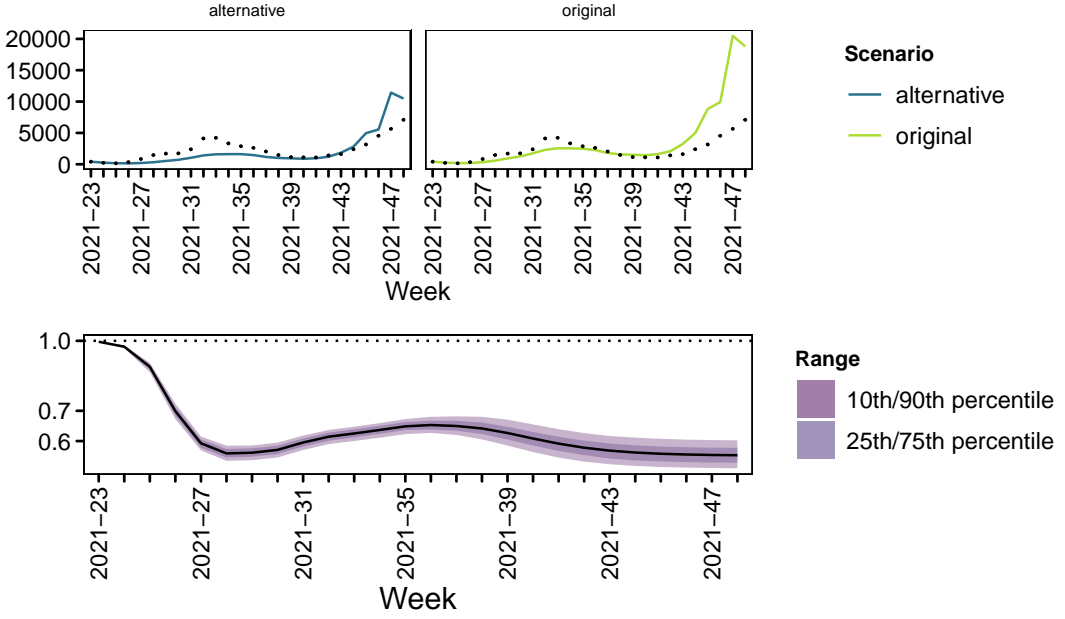
80 Below we show predicted cases under the two vaccination coverages (as observed and
 81 maximum coverage across regions) and ratio between the two

Table 1: Final size estimates based on path forecasts

	True	Original coverage			Alternative coverage		
		Endemic	Epidemic	Both	Endemic	Epidemic	Both
10 - 19	73195	115341	497769	151064	54394	54878	44820
20 - 29	59099	94228	282376	105667	54644	74290	49647
30 - 39	62337	93760	265990	106912	54640	63686	49436
40 - 49	55949	84499	226076	95705	51097	57481	46829
50 - 59	40373	68097	171177	75906	44217	49229	41602
60 - 69	20807	33111	78320	36738	24494	26597	24109
70 - 79	11779	17250	49350	20853	14677	15245	15032
80+	9342	15400	59054	21075	12319	13778	12827

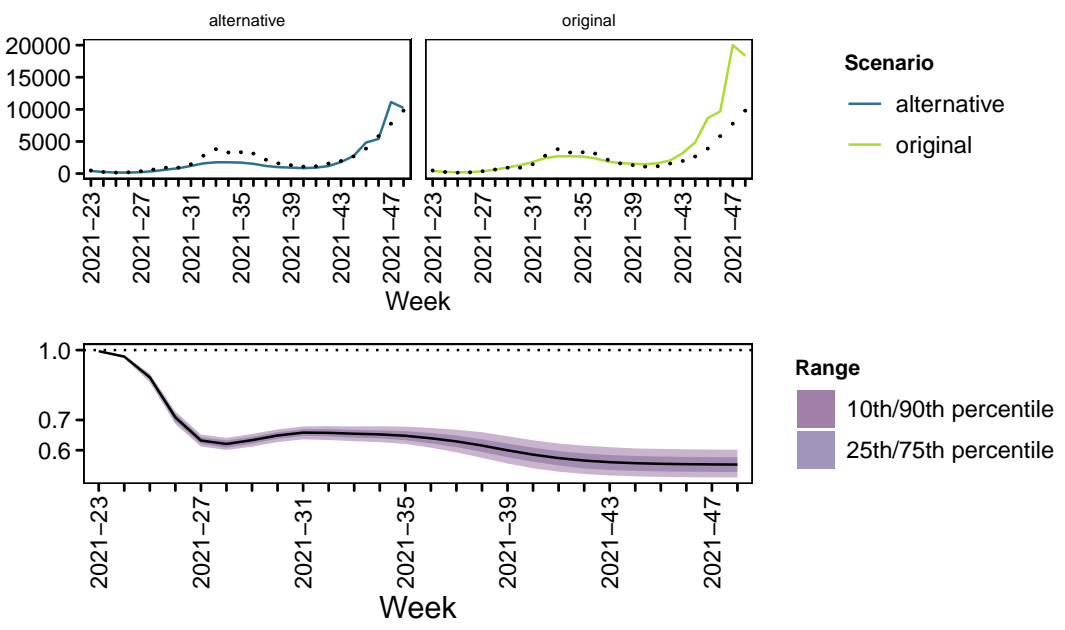


Ratio between scenarios $\frac{\text{Predicted cases (20 - 29)}}{\text{change in COVID-19 cases}}$



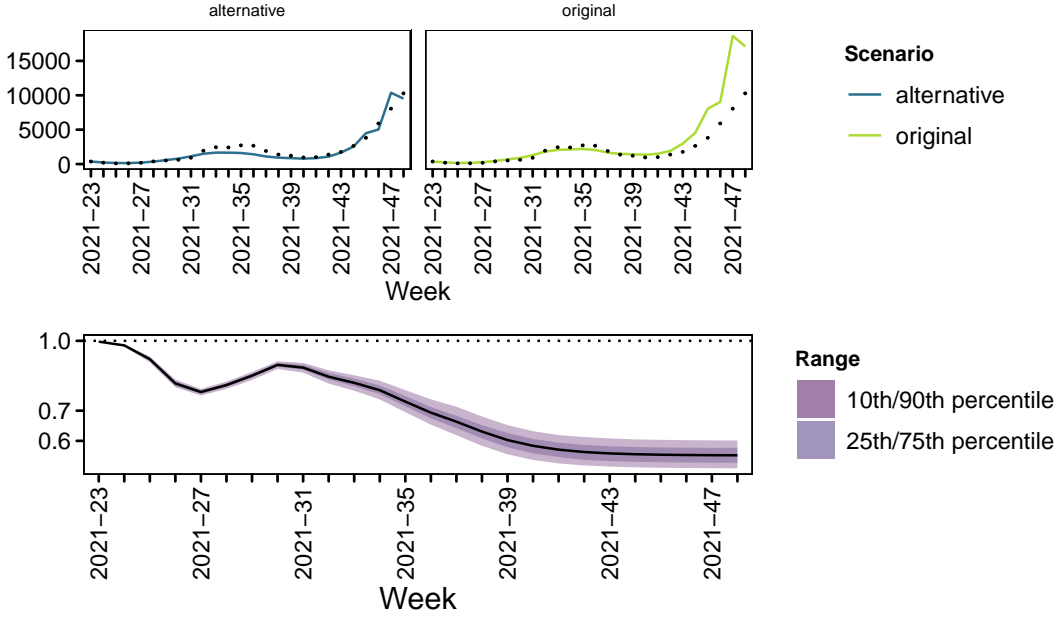
83

Ratio between scenarios $\frac{\text{Predicted cases (30 - 39)}}{\text{change in COVID-19 cases}}$



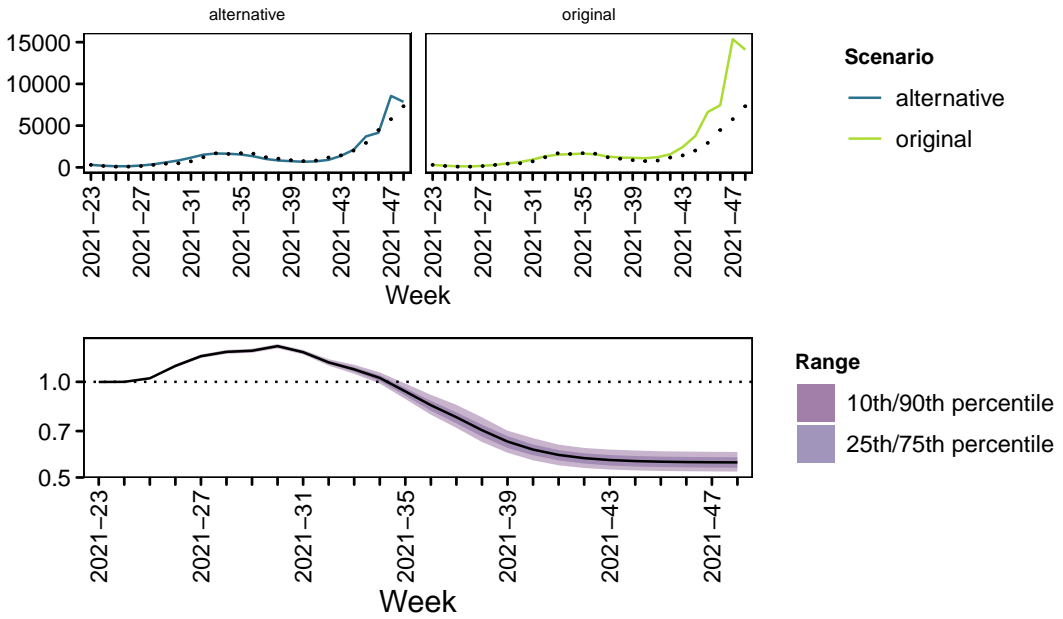
84

Ratio between scenarios $\frac{\text{Predicted cases (40 - 49)}}{\text{change in COVID-19 cases}}$

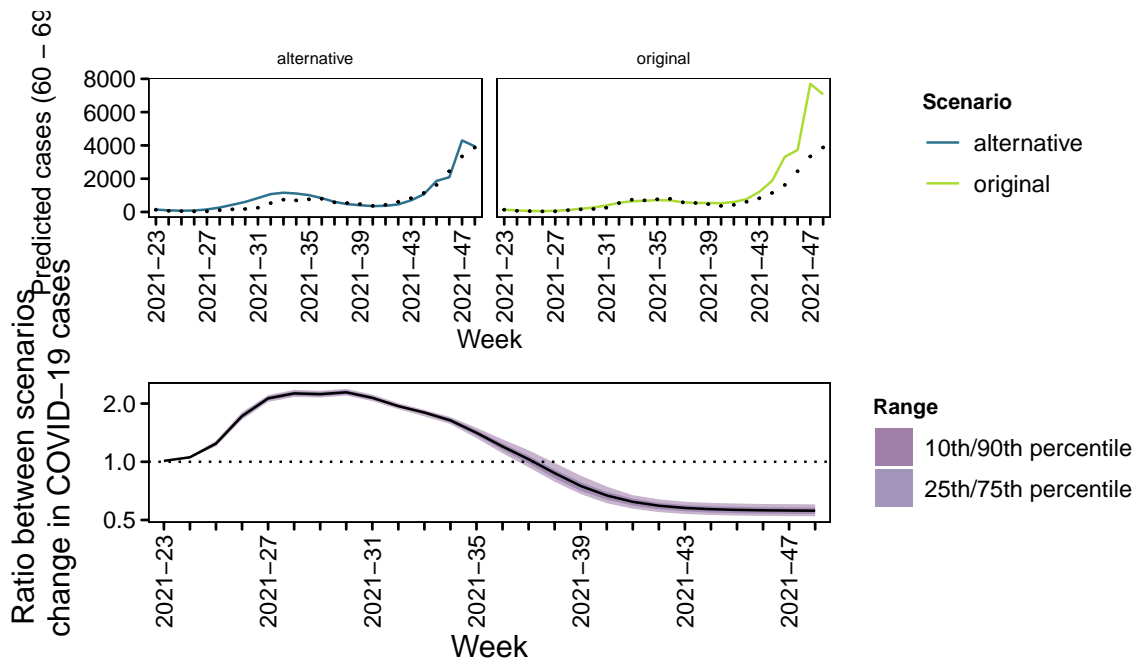


85

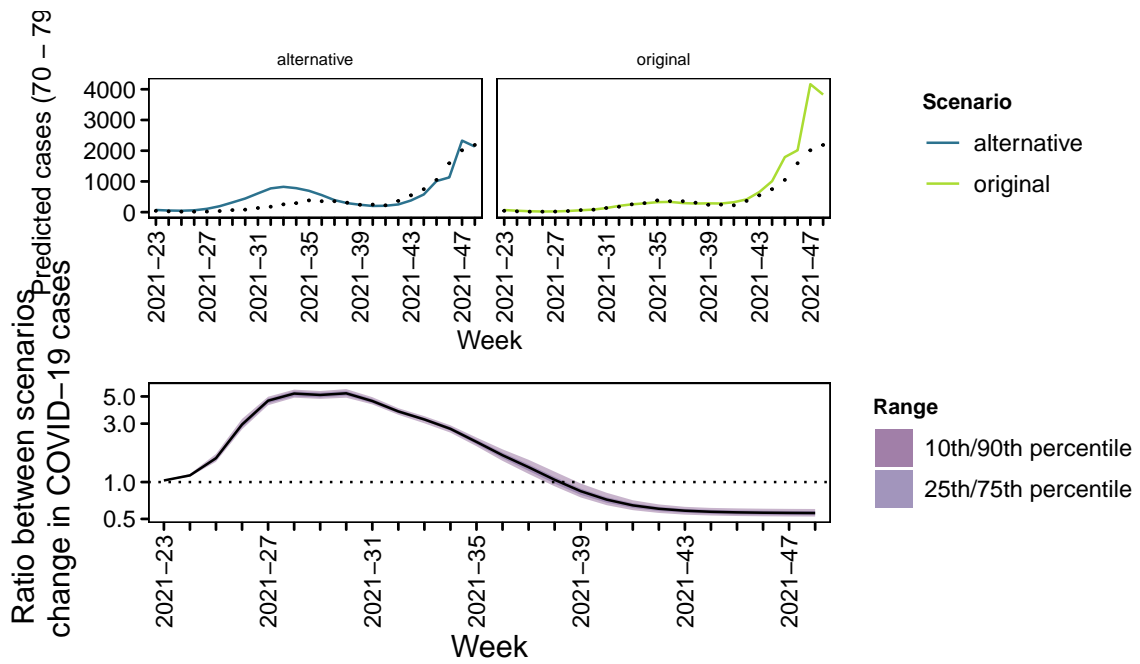
Ratio between scenarios $\frac{\text{Predicted cases (50 - 59)}}{\text{change in COVID-19 cases}}$



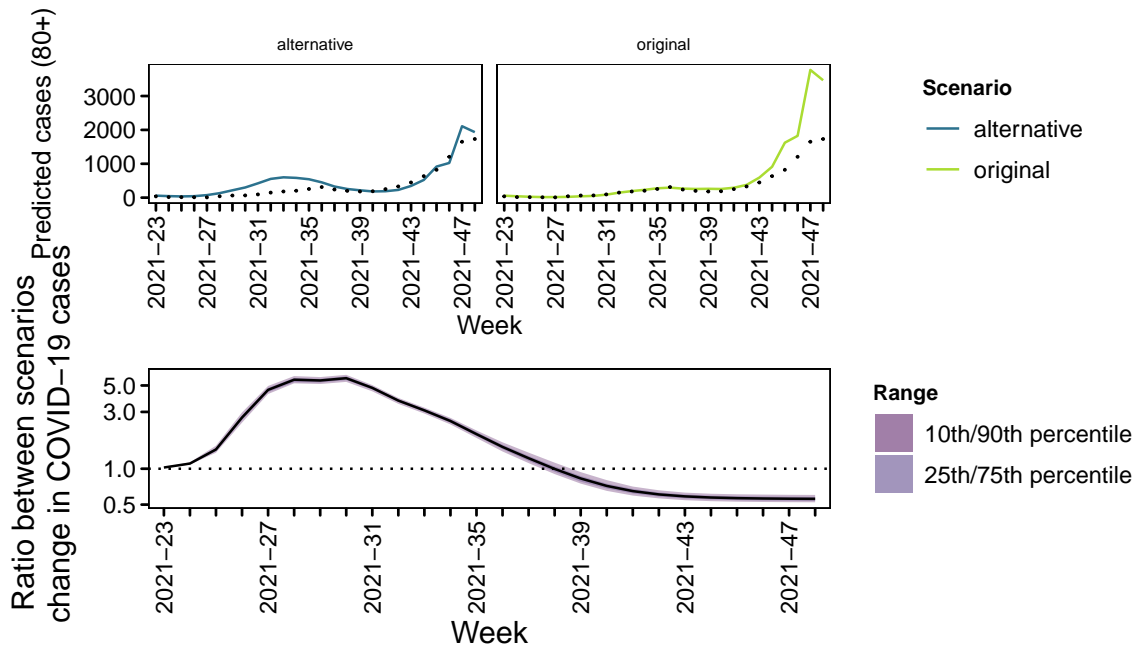
86



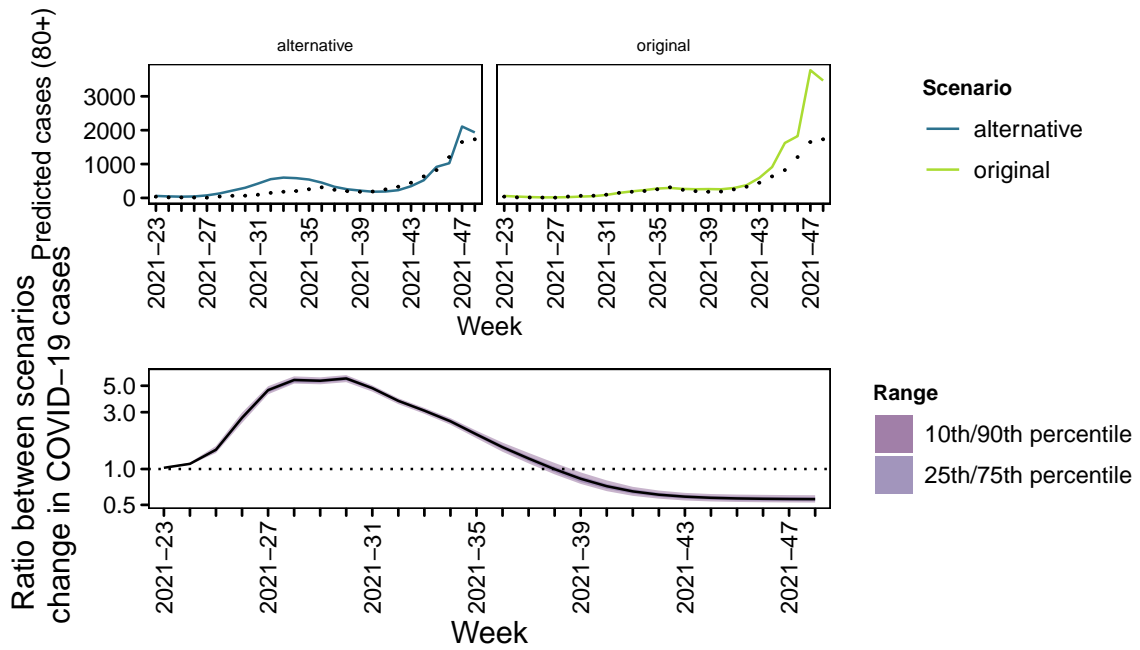
87



88



89



90

91 **References**

92 [1] M. Bekker-Nielsen Dunbar and L. Held. STUDY PROTOCOL: The COVID-19 vaccina-
 93 tion campaign in Switzerland and its impact on disease spread. *Open Science Founda-*
 94 *tion*, 2022. DOI:[10.17605/OSF.IO/6X4VK](https://doi.org/10.17605/OSF.IO/6X4VK).

- 95 [2] M. Grimée, M. Bekker-Nielsen Dunbar (joint first authors), F. Hofmann, and L. Held.
96 Modelling the effect of a border closure between Switzerland and Italy on the spa-
97 tiotemporal spread of COVID-19 in Switzerland. *Spatial Statistics*, page 100552, 2021.
98 DOI:[10.1016/j.spasta.2021.100552](https://doi.org/10.1016/j.spasta.2021.100552).
- 99 [3] M. Bekker-Nielsen Dunbar, F. Hoffmann, and L. Held. Assessing the effect of school
100 closures on the spread of COVID-19 in Zurich. *Journal of the Royal Statistical Society*
101 *Series A*, 2022. DOI:[10.1111/rssa.12910](https://doi.org/10.1111/rssa.12910).
- 102 [4] M. Bekker-Nielsen Dunbar, F. Hofmann, S. Meyer, and L. Held (joint last authors).
103 Endemic-epidemic modelling of school closure to prevent spread of COVID-19 in
104 Switzerland (protocol available at DOI:[10.17605/osf.io/qh3gd](https://doi.org/10.17605/osf.io/qh3gd)). *medRxiv*, 2023.
105 DOI:[10.1101/2023.03.21.23287519](https://doi.org/10.1101/2023.03.21.23287519).