

SUPPLEMENTARY APPENDIX

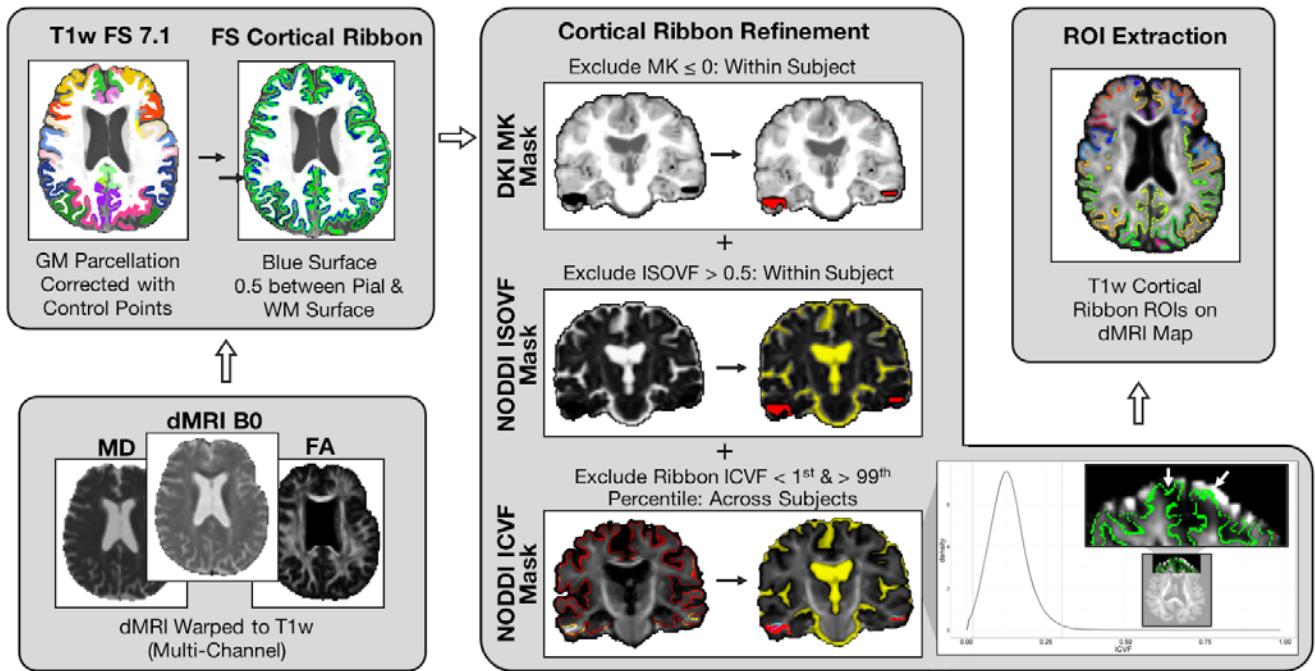
Cortical microstructural associations with CSF amyloid and pTau

Table of Contents

1. Supplementary Methods	2
1.1 Cortical dMRI measure extraction flow chart.....	2
Supplementary Figure 1	
1.2 MT-NODDI parallel diffusivity MSE comparisons	3
Supplementary Figure 2	
1.3. Proposed mediation analysis.....	3
Supplementary Figure 3	
2. Supplementary Results.....	4
2.1 Correlation between cortical AD-metaROI measures	4
Supplementary Figure 4	
2.2 CSF biomarker associations with cortical MRI measures.....	5
Supplementary Table 1	
2.3 Log10-transformed pTau181 associations.....	5
Supplementary Table 2	
Supplementary Figure 5	
2.4 Sensitivity analysis: CSF biomarker associations in non-demented participants	7
Supplementary Table 3	
Supplementary Figure 6	
Supplementary Figure 7	
Supplementary Figure 8	
2.5 AD-metaROI MRI differences between CSF and clinical diagnosis group	11
Supplementary Figure 9	
Supplementary Figure 10	
2.6 Interactive effects of CSF biomarker on AD-metaROI MRI measures	13
Supplementary Figure 11	
Supplementary Figure 12	
2.7 Exploratory CSF biomarker group classification by cortical AD-metaROI measures	14
Supplementary Table 4	
Supplementary Figure 13	
Supplementary Table 5	
Supplementary Figure 14	
Supplementary Table 6	
Supplementary Figure 15	
Supplementary Table 7	
2.8 Sensitivity analysis: Mediation analyses in non-demented participants	19
Supplementary Table 8	
2.9 Spatially distinct patterns of ICVF and ISOVF associations with amyloid	20
Supplementary Figure 16	
2.10 CSF pTau and delayed working memory.....	21
Supplementary Figure 17	

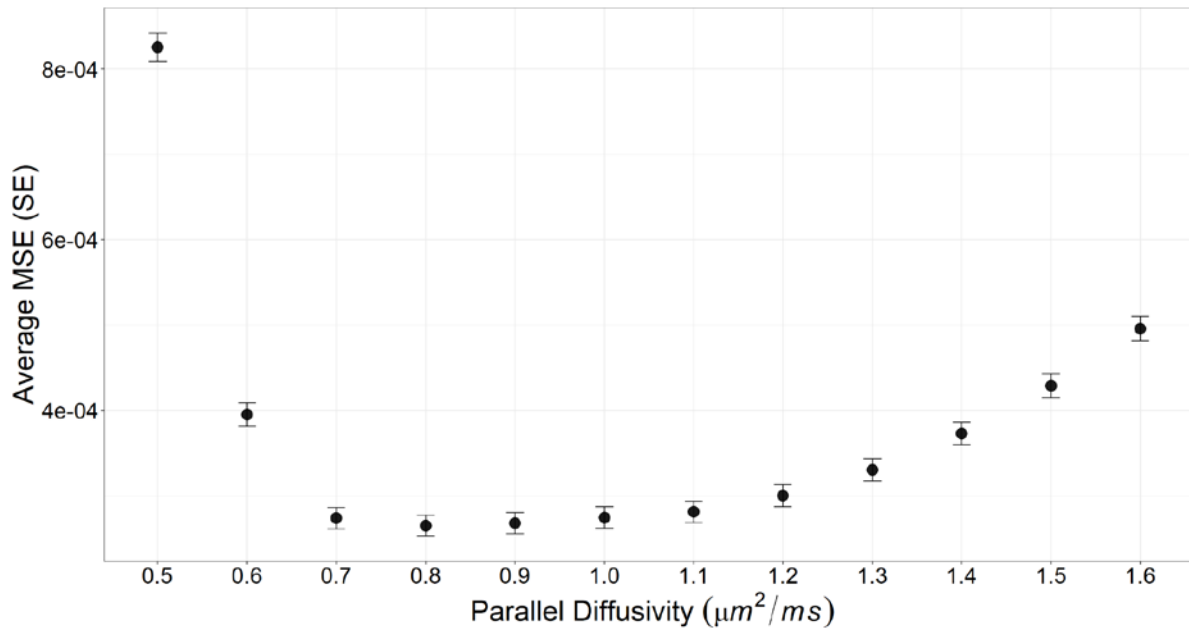
1. Supplementary Methods

1.1 Cortical dMRI measure extraction flow chart



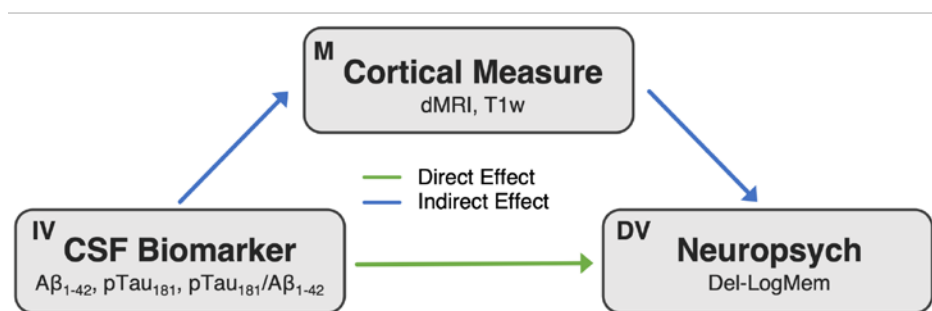
Supplementary Figure 1. After spatially normalizing dMRI maps to respective parcellated T1w images, mean dMRI measures were extracted from a cortical ribbon halfway between the pial and white matter surfaces. To further mitigate any remaining artifacts, partial volume effects, and misregistration the following were excluded from the cortical ribbon: (1) voxels with implausible negative kurtosis values, i.e., DKI MK value ≤ 0 ; (2) voxels with CSF partial voluming, i.e., ISOVF > 0.5 ; and (3) as illustrated, voxels in the ribbon that had extreme ICVF values for the sample, i.e., voxels with ICVF values in the 1st and 99th percentiles across all participants. These tended to occur in regions with uncorrected EPI induced distortions such as the frontal and temporal lobes.

1.2 MT-NODDI parallel diffusivity MSE comparisons



Supplementary Figure 2. The average mean square error (MSE), for each d_{\parallel} , between MT-NODDI measured and predicted signals averaged within the medial cortical ribbon across CU participants. The lowest error was found with $d_{\parallel} = 0.8 \mu\text{m}^2/\text{ms}$. Paired two-sided t-tests revealed cortical MSE for $d_{\parallel} = 0.8$ was significantly lower than all other d_{\parallel} values.

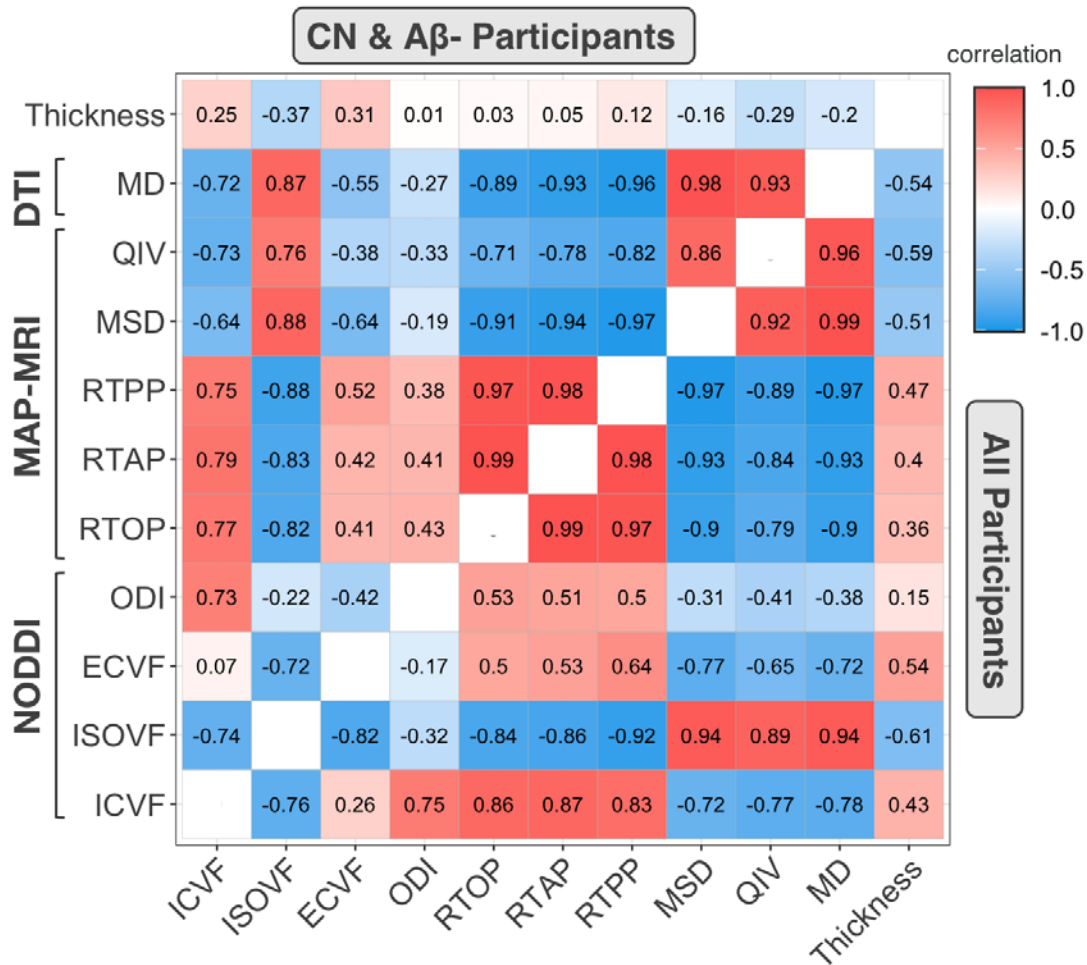
1.3 Proposed mediation analysis



Supplementary Figure 3. Proposed mediation analysis. Key: IV: Independent Variable; M: Mediator; DV: Dependent Variable.

2. Supplementary Results

2.1 Correlation between cortical AD-metaROI measures



Supplementary Figure 4. Pearson's correlation coefficients between cortical AD-metaROI measures across all participants (N=66; *lower right*) and across the subset of A β ₁₋₄₂ negative and CU participants (N=29; *upper left*).

2.2 CSF biomarker associations with cortical MRI measures

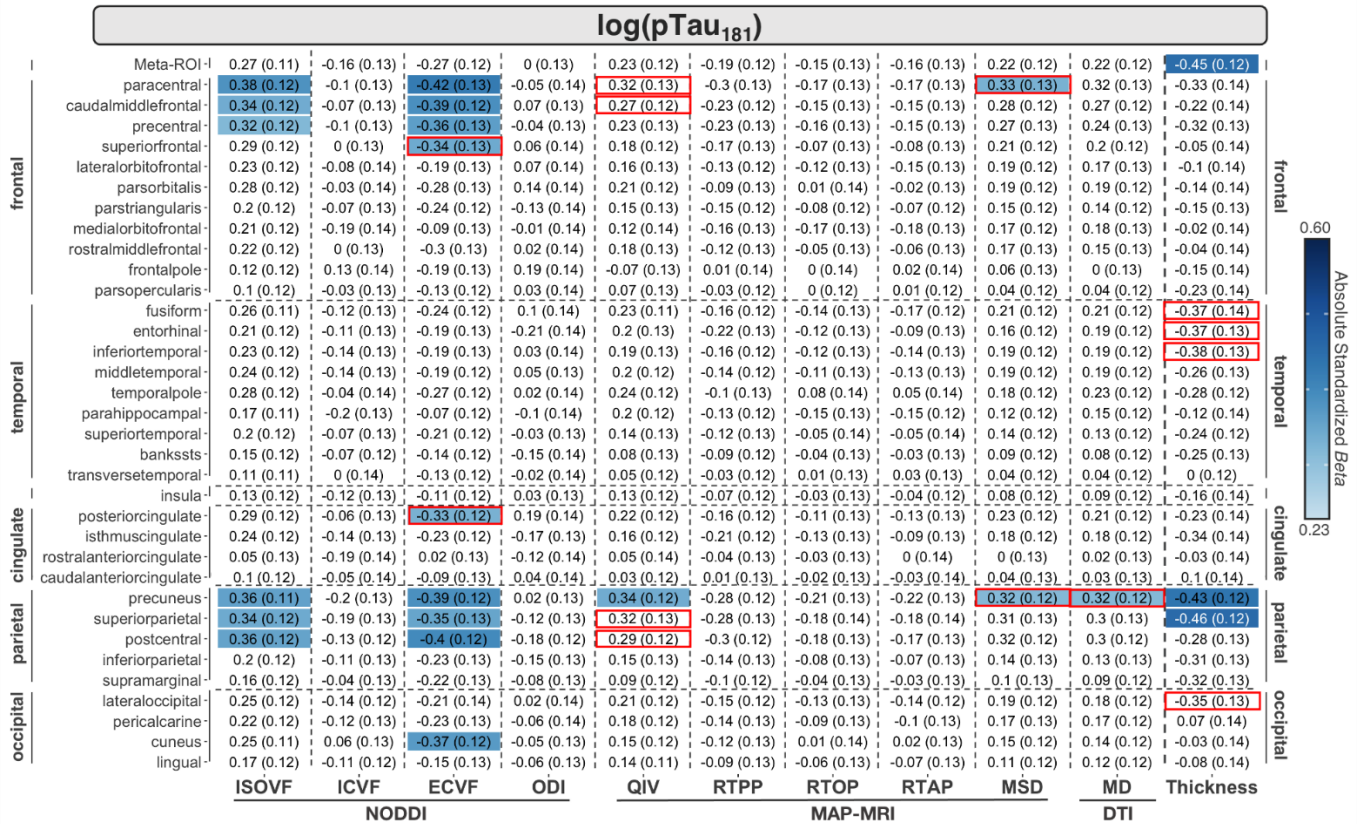
Supplementary Table 1. Number of significant cortical ROIs-- out of 34 individual ROIs and the AD signature meta-ROI tested -- and direction of associations between each cortical MRI and CSF measure (dMRI $p \leq 0.012$; CTh $p \leq 0.0056$).

Model	Measure	A β		pTau		pTau/A β		Total N
		N	+/-	N	+/-	N	+/-	
MT-NODDI	ECVF			7	-	6	-	13
	ISOVF	15	-	6	+	29	+	50
	ICVF	14	+			20	-	34
	ODI	4	+			4	-	8
MAP-MRI	MSD	6	-			20	+	26
	QIV	16	-	5	+	24	+	45
	RTAP	2	+			9	-	11
	RTOP	1	+			8	-	9
	RTPP	6	+			21	-	27
DTI	MD	13	-			24	+	37
FreeSurfer	CTh	1	+	7	-	5	-	13
Total N		78		25		170		273

2.3 Log₁₀-transformed pTau₁₈₁ associations

Supplementary Table 2. Summary of log₁₀ transform pTau results. Number of significant cortical ROIs-- out of 34 individual ROIs and the AD signature meta-ROI tested -- and direction of associations between each cortical MRI and CSF measure. When using the log₁₀ transform of pTau instead of pTau, the threshold for significant dMRI associations did not change (dMRI $p \leq 0.012$), while CTh did (CTh $p \leq 0.00086$). Compared to a total of 273 significant associations when assessing A β , pTau, and pTau/A β , a total of 268 significant associations were detected across A β , log₁₀(pTau), and pTau/A β .

Model	Measure	A β		log ₁₀ (pTau)		pTau/A β		Total N
		N	+/-	N	+/-	N	+/-	
MT-NODDI	ECVF			9	-	6	-	15
	ISOVF	15	-	6	+	29	+	50
	ICVF	14	+			20	-	34
	ODI	4	+			4	-	8
MAP-MRI	MSD	6	-	2	+	20	+	28
	QIV	16	-	1	+	24	+	41
	RTAP	2	+			9	-	11
	RTOP	1	+			8	-	9
	RTPP	6	+			21	-	27
DTI	MD	13	-	1	+	24	+	38
FreeSurfer	CTh			3	-	4	-	7
Total N		77		22		169		268

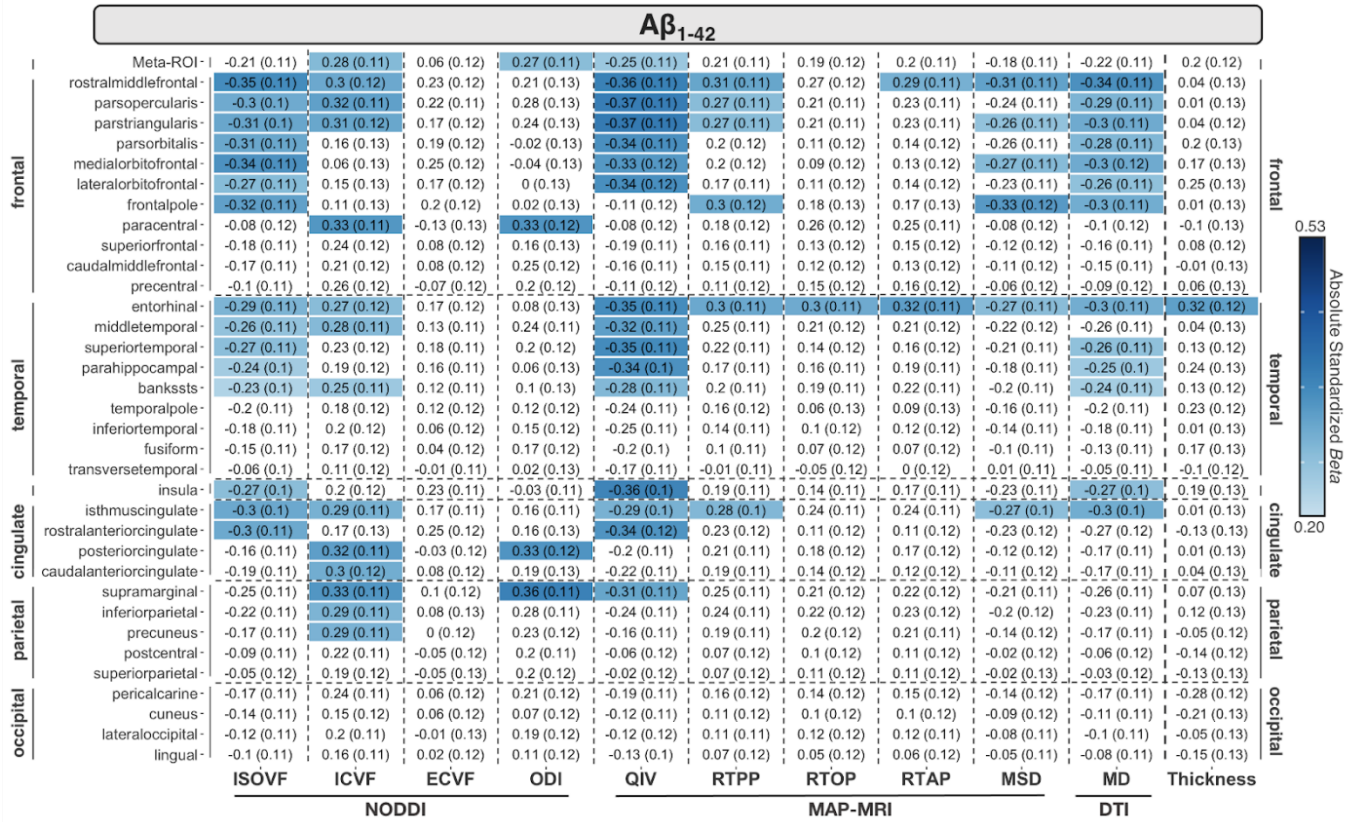


Supplementary Figure 5. Effect sizes (*Beta*-values and standard error) for associations between log₁₀-transformed CSF pTau₁₈₁ and each cortical measure. Significant associations (dMRI $p \leq 0.012$; CTh $p \leq 0.00086$) are shaded according to the absolute value of their effect size. For comparison with pTau₁₈₁, ROIs that changed significance are highlighted in red boxes.

2.4 Sensitivity analysis: CSF biomarker associations in non-demented participants

Supplementary Table 3. Number of significant ROIs (dMRI $p \leq 0.048$; CTh $p \leq 0.029$) and direction of associations between each cortical and CSF measure in the subset of participants without dementia (N=64). Only measures and ROIs that were significant in the entire cohort were evaluated. The percent of the ROIs significant in the non-demented subset relative to the whole cohort is reported. Only four of 170 p-tau₁₈₁/A β ₁₋₄₂ ROIs that were significant in the full cohort were not significant in non-demented participants.

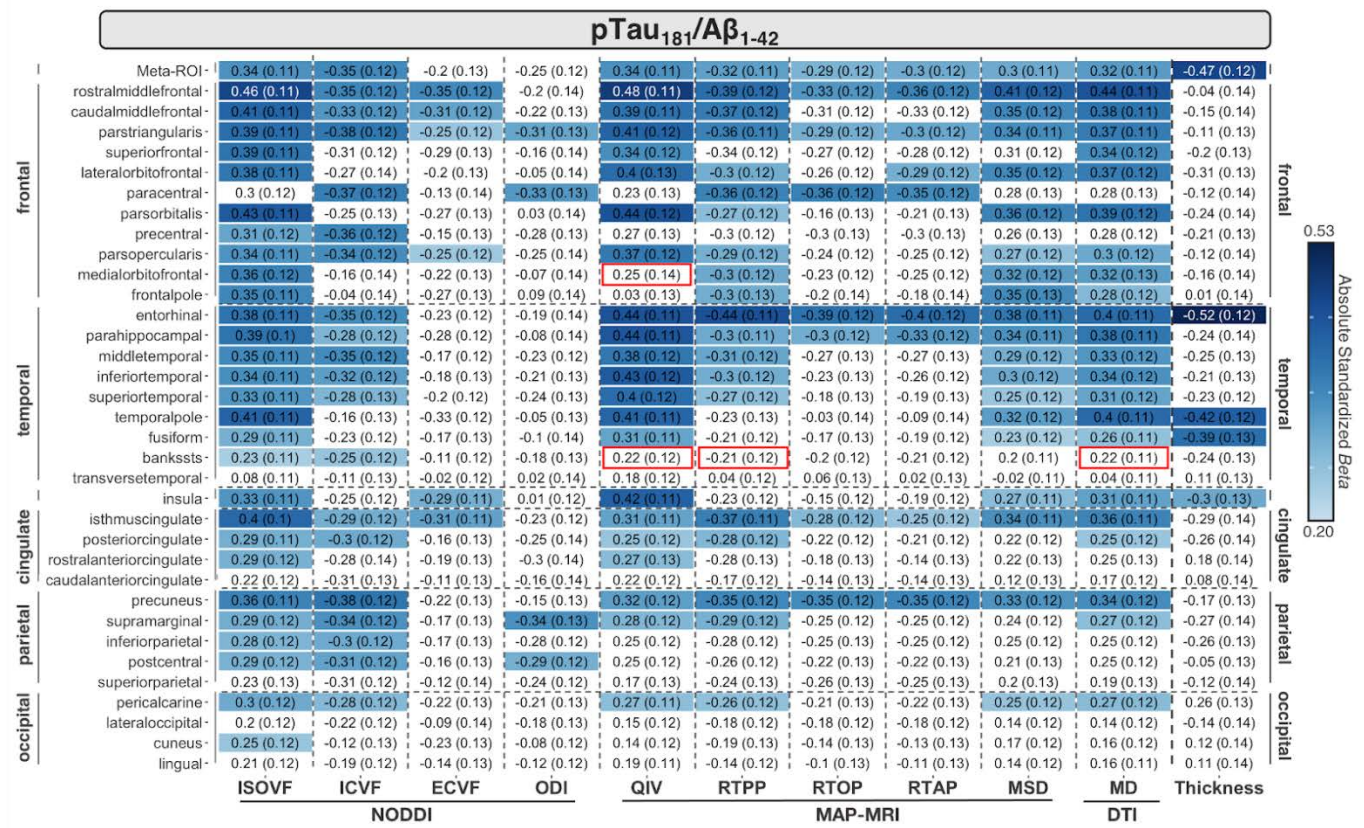
Model	Measure	A β ₁₋₄₂			p-tau ₁₈₁			p-tau ₁₈₁ /A β ₁₋₄₂			Total N (%)
		N	%	+/-	N	%	+/-	N	%	+/-	
MT-NODDI	ECVF				7	100	-	6	100	-	13 (100%)
	ISOVF	15	100	-	6	100	+	29	100	-	50 (100%)
	ICVF	14	100	+				20	100	-	34 (100%)
	ODI	4	100	+				4	100	-	8 (100%)
MAPMRI	MSD	6	100	-				20	100	+	26 (100%)
	QIV	16	100	-	5	100	+	22	91.7	+	43 (95.6%)
	RTAP	2	100	+				9	100	-	11 (100%)
	RTOP	1	100	+				8	100	-	9 (100%)
	RTPP	6	100	+				20	95.2	-	26 (96.3%)
DTI	MD	13	100	-				23	95.8	+	36 (97.3%)
FreeSurfer	CTh	1	100	+	7	100	-	5	100	-	13 (100%)
Total N (%)		78 (100%)			25 (100%)			166 (97.6%)			269 (98.5%)



Supplementary Figure 6. Effect sizes (*Beta*-values and standard error) for associations between CSF A β ₁₋₄₂ and each cortical measure in the subset of participants without dementia (N=64). Significant associations (dMRI $p \leq 0.048$; CTh $p \leq 0.029$) are shaded according to the absolute value of their effect size; only measures and ROIs that were significant in the entire cohort were considered. All ROIs that were significant in the full cohort remained significant in non-demented participants.

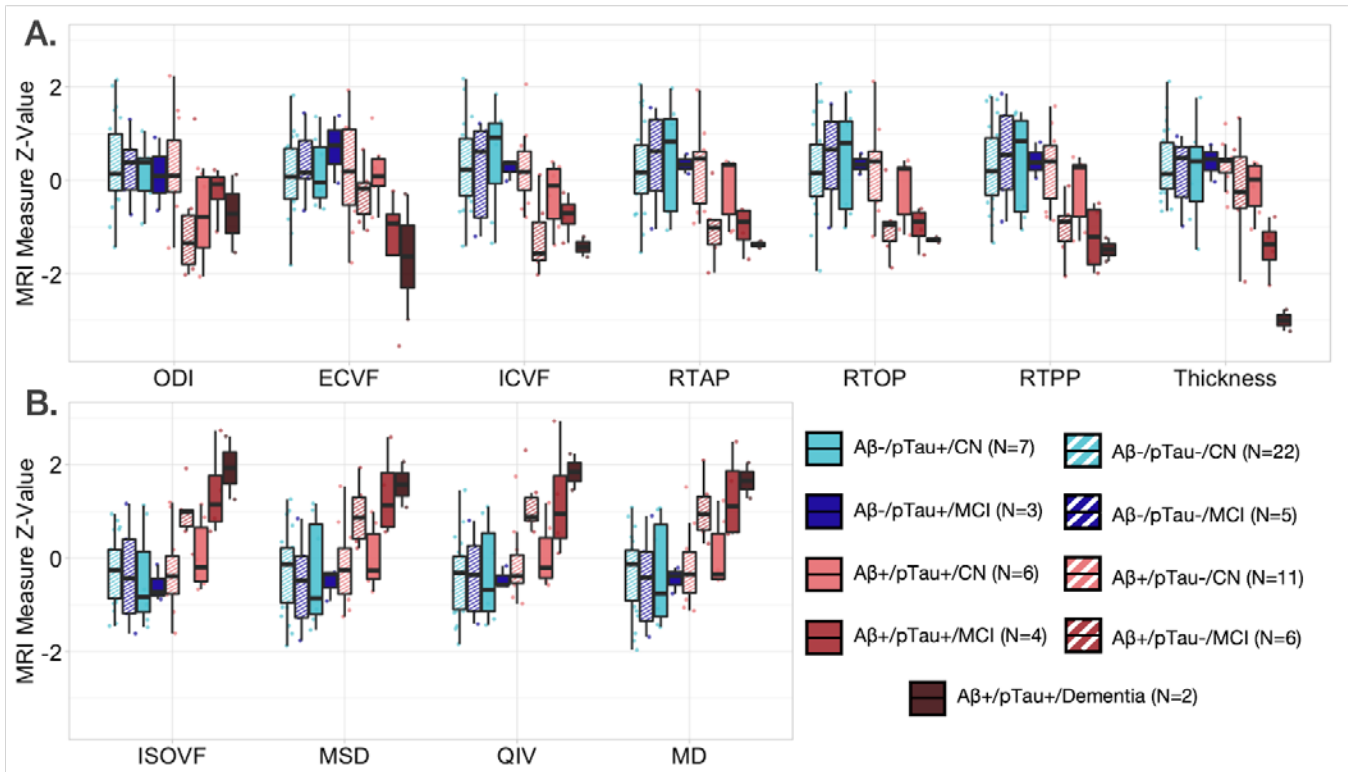
		pTau ₁₈₁											
		ISOVF	ICVF	ECVF	ODI	QIV	RTPP	RTOP	RTAP	MSD	MD	Thickness	Absolute Standardized Beta
		NODDI			MAP-MRI			DTI					
frontal	Meta-ROI	0.19 (0.13)	-0.08 (0.13)	-0.23 (0.13)	0 (0.13)	0.15 (0.13)	-0.12 (0.13)	-0.06 (0.14)	-0.06 (0.14)	0.14 (0.13)	0.14 (0.13)	-0.47 (0.12)	0.53
	paracentral	0.39 (0.13)	-0.06 (0.13)	-0.48 (0.14)	-0.03 (0.15)	0.34 (0.13)	-0.3 (0.13)	-0.13 (0.14)	-0.12 (0.14)	0.34 (0.13)	0.32 (0.13)	-0.33 (0.14)	
	caudalmiddlefrontal	0.32 (0.12)	-0.1 (0.14)	-0.35 (0.13)	0.03 (0.14)	0.3 (0.13)	-0.25 (0.13)	-0.15 (0.14)	-0.15 (0.14)	0.28 (0.13)	0.27 (0.13)	-0.23 (0.14)	
	precentral	0.27 (0.13)	-0.06 (0.14)	-0.34 (0.13)	-0.07 (0.14)	0.2 (0.14)	-0.21 (0.14)	-0.12 (0.14)	-0.1 (0.14)	0.23 (0.14)	0.2 (0.14)	-0.27 (0.14)	
	superiorfrontal	0.26 (0.12)	-0.05 (0.14)	-0.31 (0.14)	0.02 (0.15)	0.21 (0.13)	-0.18 (0.13)	-0.09 (0.14)	-0.09 (0.14)	0.21 (0.13)	0.2 (0.13)	-0.03 (0.14)	
	frontalpole	-0.05 (0.13)	0.19 (0.15)	-0.07 (0.14)	0.21 (0.15)	-0.2 (0.14)	0.13 (0.15)	0.03 (0.15)	0.06 (0.15)	-0.09 (0.14)	-0.18 (0.14)	-0.16 (0.14)	
	parsorbitalis	0.13 (0.13)	0.04 (0.15)	-0.16 (0.14)	0.19 (0.15)	0.05 (0.14)	0.06 (0.14)	0.11 (0.14)	0.08 (0.14)	0.04 (0.14)	0.03 (0.14)	-0.14 (0.14)	
	parsopercularis	-0.04 (0.13)	0.07 (0.14)	0 (0.13)	0.08 (0.15)	-0.1 (0.14)	0.09 (0.13)	0.11 (0.13)	0.12 (0.13)	-0.08 (0.13)	-0.1 (0.13)	-0.16 (0.14)	
	medialorbitofrontal	-0.01 (0.14)	-0.15 (0.15)	0.1 (0.14)	-0.03 (0.15)	-0.1 (0.15)	-0.03 (0.14)	-0.09 (0.14)	-0.07 (0.14)	-0.03 (0.14)	-0.04 (0.14)	0.03 (0.14)	
	rostralmiddlefrontal	0.11 (0.13)	0.03 (0.14)	-0.17 (0.14)	0.05 (0.15)	0.08 (0.14)	-0.03 (0.14)	0.02 (0.14)	0.01 (0.14)	0.07 (0.14)	0.05 (0.14)	-0.02 (0.14)	
	parstriangularis	0.07 (0.13)	0 (0.14)	-0.09 (0.14)	-0.07 (0.15)	-0.01 (0.14)	-0.04 (0.13)	0 (0.13)	0.02 (0.13)	0.04 (0.13)	0.01 (0.13)	-0.14 (0.14)	
	lateralorbitofrontal	0.07 (0.13)	-0.04 (0.15)	-0.04 (0.14)	0.02 (0.15)	-0.03 (0.15)	-0.02 (0.13)	-0.06 (0.14)	-0.06 (0.14)	0.03 (0.13)	0 (0.14)	-0.07 (0.15)	
	fusiform	0.18 (0.12)	-0.03 (0.13)	-0.21 (0.13)	0.13 (0.14)	0.13 (0.12)	-0.07 (0.13)	-0.04 (0.14)	-0.06 (0.13)	0.13 (0.13)	0.12 (0.13)	-0.4 (0.14)	
	temporalpole	0.17 (0.13)	0.08 (0.14)	-0.21 (0.13)	0.13 (0.14)	0.16 (0.14)	0.03 (0.14)	0.13 (0.15)	0.11 (0.15)	0.08 (0.13)	0.11 (0.13)	-0.27 (0.13)	
transversetemporal	-0.07 (0.12)	0.12 (0.14)	-0.01 (0.13)	0.09 (0.15)	-0.14 (0.13)	0.18 (0.13)	0.18 (0.13)	0.19 (0.13)	-0.15 (0.12)	-0.15 (0.12)	0 (0.13)		
superiortemporal	0.04 (0.13)	0.07 (0.14)	-0.1 (0.13)	0.06 (0.14)	-0.05 (0.14)	0.07 (0.14)	0.14 (0.14)	0.14 (0.14)	-0.04 (0.13)	-0.06 (0.13)	-0.18 (0.13)		
entorhinal	0.05 (0.13)	-0.01 (0.14)	-0.06 (0.14)	-0.2 (0.15)	0.02 (0.13)	-0.1 (0.14)	-0.03 (0.14)	0.02 (0.14)	0.02 (0.13)	0.03 (0.13)	-0.39 (0.13)		
inferiortemporal	0.11 (0.13)	-0.01 (0.14)	-0.14 (0.14)	0.1 (0.14)	0.04 (0.14)	-0.02 (0.13)	0.01 (0.14)	0 (0.14)	0.05 (0.14)	0.05 (0.14)	-0.4 (0.13)		
bankssts	0 (0.12)	0.03 (0.13)	-0.01 (0.13)	-0.11 (0.14)	-0.09 (0.13)	0.04 (0.13)	0.07 (0.13)	0.08 (0.13)	-0.05 (0.13)	-0.07 (0.13)	-0.23 (0.14)		
parahippocampal	0.09 (0.12)	-0.11 (0.13)	-0.03 (0.13)	-0.01 (0.15)	0.12 (0.13)	-0.02 (0.13)	-0.05 (0.13)	-0.06 (0.13)	0.03 (0.13)	0.07 (0.12)	-0.15 (0.14)		
middletemporal	0.1 (0.13)	-0.05 (0.14)	-0.08 (0.13)	0.05 (0.13)	0.07 (0.14)	-0.01 (0.13)	0.02 (0.14)	0.01 (0.14)	0.05 (0.14)	0.05 (0.14)	-0.21 (0.14)		
insula	0 (0.13)	-0.01 (0.14)	0.01 (0.13)	0 (0.13)	-0.03 (0.13)	0.06 (0.13)	0.08 (0.13)	0.08 (0.13)	-0.05 (0.13)	-0.06 (0.13)	-0.14 (0.14)		
cingulate	rostralanteriorcingulate	-0.09 (0.14)	-0.15 (0.15)	0.15 (0.14)	-0.13 (0.15)	-0.1 (0.15)	0.06 (0.14)	0.03 (0.14)	0.09 (0.14)	-0.13 (0.14)	-0.12 (0.14)	-0.1 (0.15)	
	posteriorcingulate	0.15 (0.13)	0.01 (0.14)	-0.22 (0.14)	0.18 (0.15)	0.09 (0.13)	-0.03 (0.13)	0 (0.14)	0 (0.14)	0.1 (0.14)	0.08 (0.13)	-0.15 (0.15)	
	isthmuscingulate	0.06 (0.12)	0 (0.14)	-0.11 (0.13)	-0.15 (0.13)	-0.02 (0.13)	-0.03 (0.13)	0.04 (0.14)	0.08 (0.13)	-0.01 (0.13)	-0.01 (0.13)	-0.33 (0.14)	
caudal	caudalanteriorcingulate	0 (0.13)	-0.03 (0.14)	-0.01 (0.14)	0.07 (0.15)	-0.07 (0.13)	0.09 (0.13)	0.03 (0.14)	0.02 (0.14)	-0.04 (0.14)	-0.05 (0.13)	0.09 (0.15)	
	superiorparietal	0.37 (0.13)	-0.25 (0.14)	-0.37 (0.14)	-0.17 (0.13)	0.41 (0.13)	-0.31 (0.14)	-0.2 (0.14)	-0.21 (0.14)	0.34 (0.14)	0.34 (0.14)	-0.49 (0.13)	
parietal	precuneus	0.32 (0.13)	-0.13 (0.14)	-0.38 (0.13)	-0.01 (0.14)	0.33 (0.13)	-0.25 (0.13)	-0.15 (0.14)	-0.14 (0.14)	0.29 (0.13)	0.28 (0.13)	-0.43 (0.13)	
	postcentral	0.32 (0.13)	-0.1 (0.13)	-0.37 (0.13)	-0.18 (0.13)	0.29 (0.13)	-0.26 (0.13)	-0.14 (0.14)	-0.12 (0.14)	0.28 (0.13)	0.27 (0.13)	-0.27 (0.13)	
	inferioparietal	0.16 (0.13)	-0.09 (0.13)	-0.17 (0.14)	-0.22 (0.13)	0.13 (0.14)	-0.12 (0.14)	-0.04 (0.14)	-0.03 (0.14)	0.11 (0.14)	0.1 (0.14)	-0.35 (0.14)	
occipital	supramarginal	0.08 (0.13)	0.01 (0.14)	-0.13 (0.14)	-0.05 (0.14)	0 (0.14)	-0.03 (0.13)	0.03 (0.14)	0.04 (0.14)	0.03 (0.14)	0.01 (0.13)	-0.26 (0.14)	
	lateraloccipital	0.2 (0.13)	-0.13 (0.13)	-0.18 (0.15)	-0.02 (0.14)	0.19 (0.13)	-0.12 (0.13)	-0.09 (0.14)	-0.09 (0.13)	0.15 (0.13)	0.14 (0.13)	-0.41 (0.13)	
	cuneus	0.19 (0.13)	0.1 (0.14)	-0.33 (0.14)	-0.05 (0.13)	0.08 (0.13)	-0.07 (0.14)	0.05 (0.15)	0.06 (0.14)	0.1 (0.13)	0.07 (0.13)	-0.1 (0.15)	
	pericalcarine	0.14 (0.13)	-0.03 (0.13)	-0.18 (0.14)	-0.07 (0.14)	0.1 (0.13)	-0.06 (0.14)	0.03 (0.14)	0.03 (0.14)	0.09 (0.14)	0.08 (0.13)	0.07 (0.14)	
lingual	0.09 (0.13)	-0.04 (0.13)	-0.1 (0.14)	-0.07 (0.13)	0.07 (0.12)	-0.01 (0.13)	0.05 (0.14)	0.04 (0.13)	0.03 (0.13)	0.04 (0.13)	-0.15 (0.14)		

Supplementary Figure 7. Effect sizes (*Beta*-values and standard error) for associations between CSF pTau₁₈₁ and each cortical measure in the subset of participants without dementia (N=64). Significant associations (dMRI $p \leq 0.048$; CTh $p \leq 0.029$) are shaded according to the absolute value of their effect size; only measures and ROIs that were significant in the entire cohort were considered. All ROIs that were significant in the full cohort remained significant in non-demented participants.

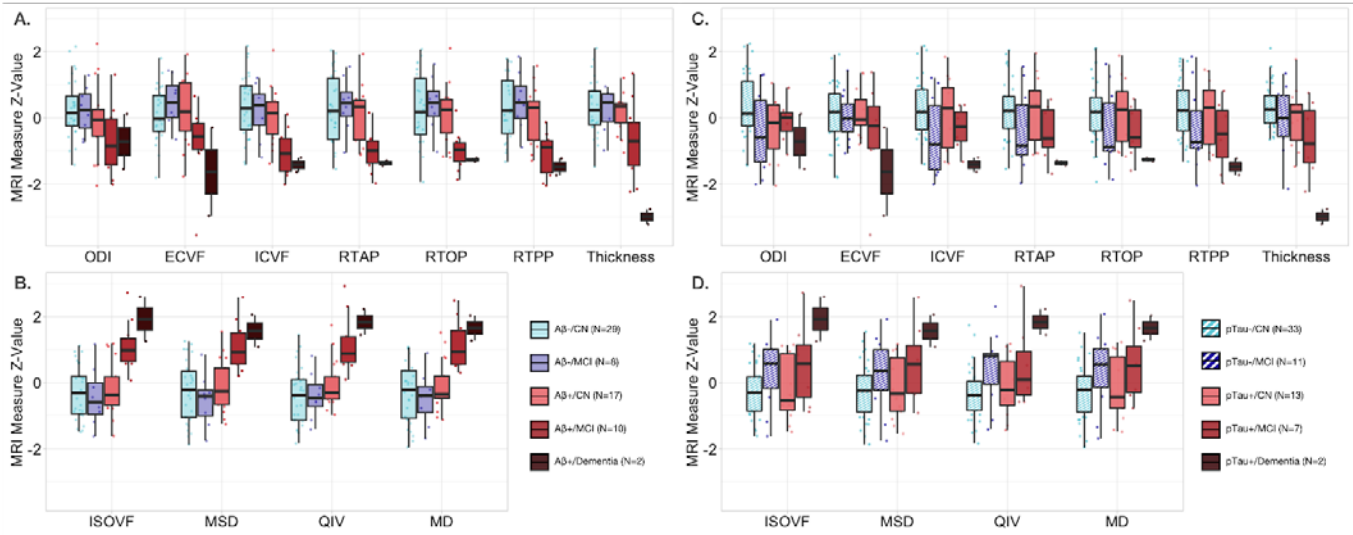


Supplementary Figure 8. Effect sizes (*Beta*-values and standard error) for associations between CSF pTau₁₈₁/Aβ₁₋₄₂ and each cortical measure in the subset of participants without dementia (N=64). Significant associations (dMRI $p \leq 0.048$; CTh $p \leq 0.029$) are shaded according to the absolute value of their effect size; only measures and ROIs that were significant in the entire cohort were considered. Only four ROIs that were significant in the full cohort were not significant in non-demented participants; these are highlighted in red boxes.

2.5 AD-metaROI MRI differences between CSF and clinical diagnosis group

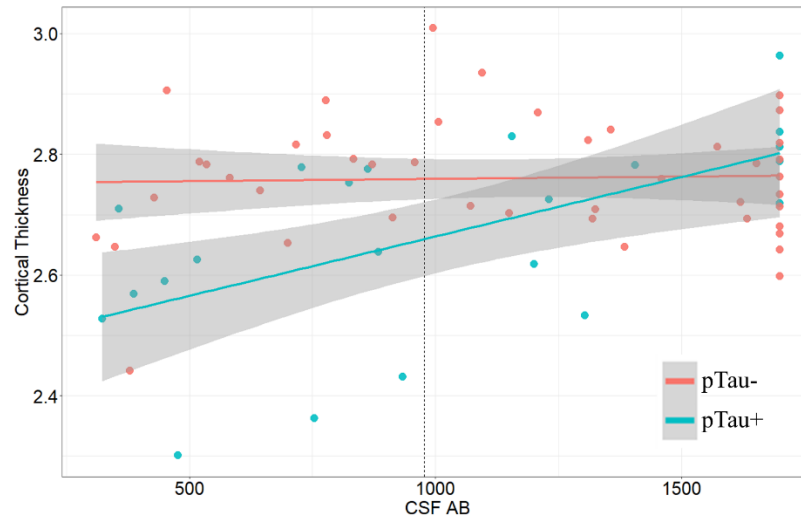


Supplementary Figure 9. Scaled cortical AD-metaROI MRI measures classified based on four CSF biomarker cutoff subgroups and three clinical diagnoses show (A) lower MT-NODDI ODI, ECVF, ICVF, MAPMRI RTAP, RTOP, RTPP, and FreeSurfer CTh (*top panel*) and (B) higher MT-NODDI ISOVF, MAPMRI MSD, QIV, and DTI MD (*bottom panel*) in $A\beta^+$ (reds) compared to $A\beta^-$ (blues) individuals. While group sizes are very small (as low as 2 to 6 participants), the greatest metaROI differences are visible in $A\beta^+$ participants with either MCI or Dementia, regardless of pTau status (pTau- depicted in *stripes* while pTau+ are *solid*).

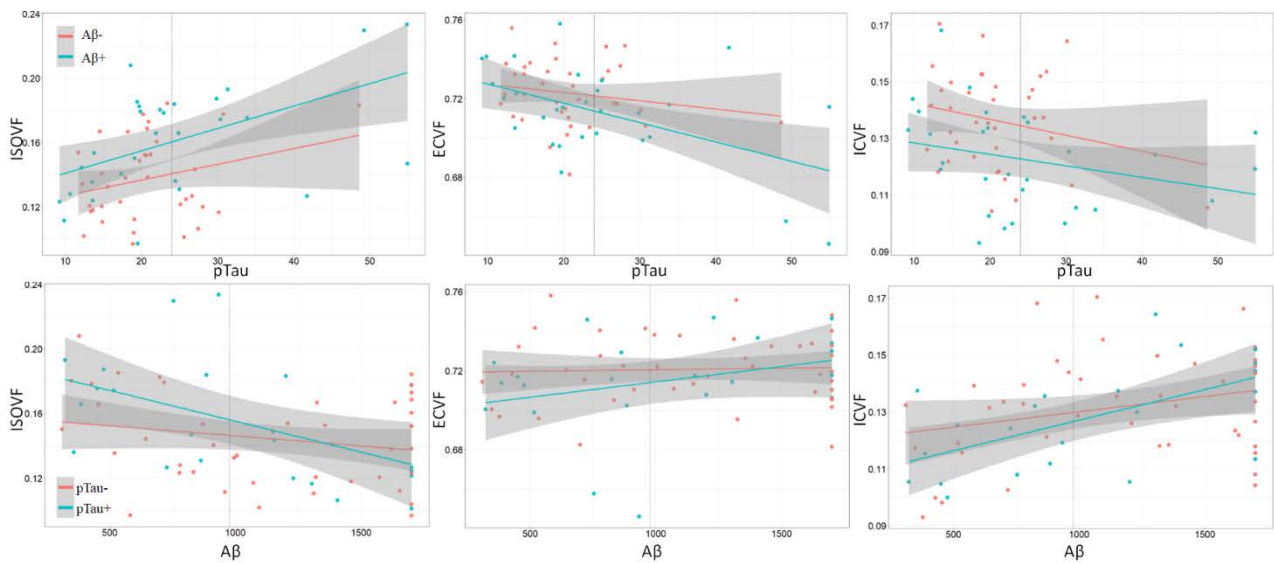


Supplementary Figure 10. Scaled cortical AD-metaROI measures classified based on (A) $A\beta$ +/- cutoff subgroups (reds vs blues) show the greatest dMRI differences in $A\beta$ + participants with either MCI or dementia (left). (B) Scaled metaROI measures classified based on pTau +/- cutoff subgroups (solid vs striped) only show large dMRI differences in the two pTau+ participants with dementia, while MCI participants show moderate differences regardless of pTau status (right).

2.6 Interactive effects of CSF biomarker on AD-metaROI MRI measures



Supplementary Figure 11. The relationship between AD-metaROI cortical thickness and CSF Aβ concentration was significantly moderated by pTau group (pTau+/-). The dotted line on the x-axis indicates the CSF Aβ cut point for positivity.



Supplementary Figure 12. While no significant interactive effects were detected, the relationship between AD-metaROI NODDI measures and CSF pTau concentration in either Aβ+ or Aβ- participants (*top row*) or CSF Aβ concentration in either pTau+ or pTau- participants (*bottom row*) are shown for reference. Dotted lines on the x-axis indicate the CSF biomarker cut points for each measure.

2.7 Exploratory CSF biomarker group classification by cortical AD-metaROI measures

2.7.1 Non-residualized cortical AD-metaROI measure CSF group classification

2.7.1.1 Logistic regression classification across participants

Supplementary Table 4. For each cortical AD-metaROI measure (not residualized), dichotomized CSF biomarker classification area under the curve (AUC)

Model	Measure	Full Cohort (N=66)			Exclude Dementia (N=64)		
		A β	pTau	pTau/A β	A β	pTau	pTau/A β
MT-NODDI	ECVF	0.71	0.55	0.76**	0.71	0.53	0.75*
	ICVF	0.78**	0.57	0.88**	0.78**	0.53	0.86**
	ISOVF	0.76**	0.57	0.87**	0.75**	0.48	0.86**
	ODI	0.74**	0.59	0.76**	0.74**	0.57	0.75**
MAP-MRI	RTOP	0.76**	0.58	0.84**	0.76**	0.46	0.82**
	RTAP	0.76**	0.57	0.85**	0.75**	0.47	0.84**
	RTPP	0.77**	0.59	0.86**	0.76**	0.45	0.85**
	MSD	0.77**	0.57	0.86**	0.76**	0.46	0.85**
	QIV	0.82**	0.58	0.92**	0.80**	0.54	0.91**
DTI	MD	0.79**	0.58	0.88**	0.78**	0.46	0.88**
FreeSurfer	Thickness	0.73**	0.67**	0.79**	0.72*	0.64	0.77**

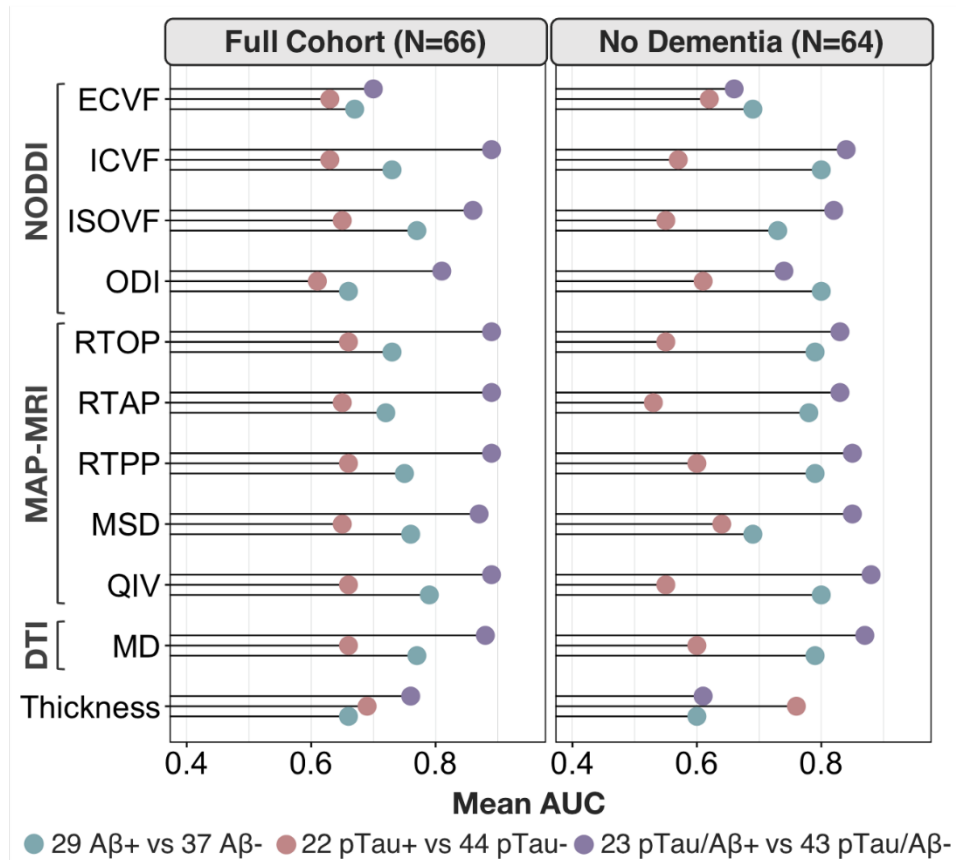
**Full cohort: dMRI $p \leq 0.021$, CTh $p \leq 0.016$

**No Dementia: dMRI $p \leq 0.029$, CTh $p \leq 0.0036$

* $p < 0.05$

2.7.1.2 Five-fold logistic regression classification 80-20 split

As reported in **Supplementary Figure 13** and **Supplementary Table 5**, dMRI AD-metaROI measures better distinguished A β ⁺ from A β ⁻ participants than did cortical thickness (mean AUC=0.66); ISOVF, RTPP, MSD, and MD performed similarly (AUC=0.75-0.77) and QIV performed marginally better (AUC=0.79). In contrast, for pTau₁₈₁ classification, cortical thickness (AUC=0.69) and dMRI ISOVF, RTOP, RTAP, RTPP, QIV and MD (AUC=0.65-0.66) performed marginally better than ECVF, ICVF, and ODI. pTau₁₈₁/A β ₁₋₄₂ status was also better classified by dMRI measures (AUC=0.87-0.89) than cortical thickness (AUC=0.76), excluding ECVF and ODI. Similar classification trends were found in the subset of participants without dementia, the most notable differences being that compared to the full group 1) measures of restriction and ODI better classified A β status, and 2) there was an even more notable difference in pTau₁₈₁ classification accuracy between diffusion and thickness measures, with diffusion measures performing on average marginally worse than in the full group and cortical thickness performing better (AUC=0.76).



Supplementary Figure 13. For each cortical AD-metaROI measure, the average dichotomized CSF biomarker group classification area under the curve (AUC) from 5 folds is reported.

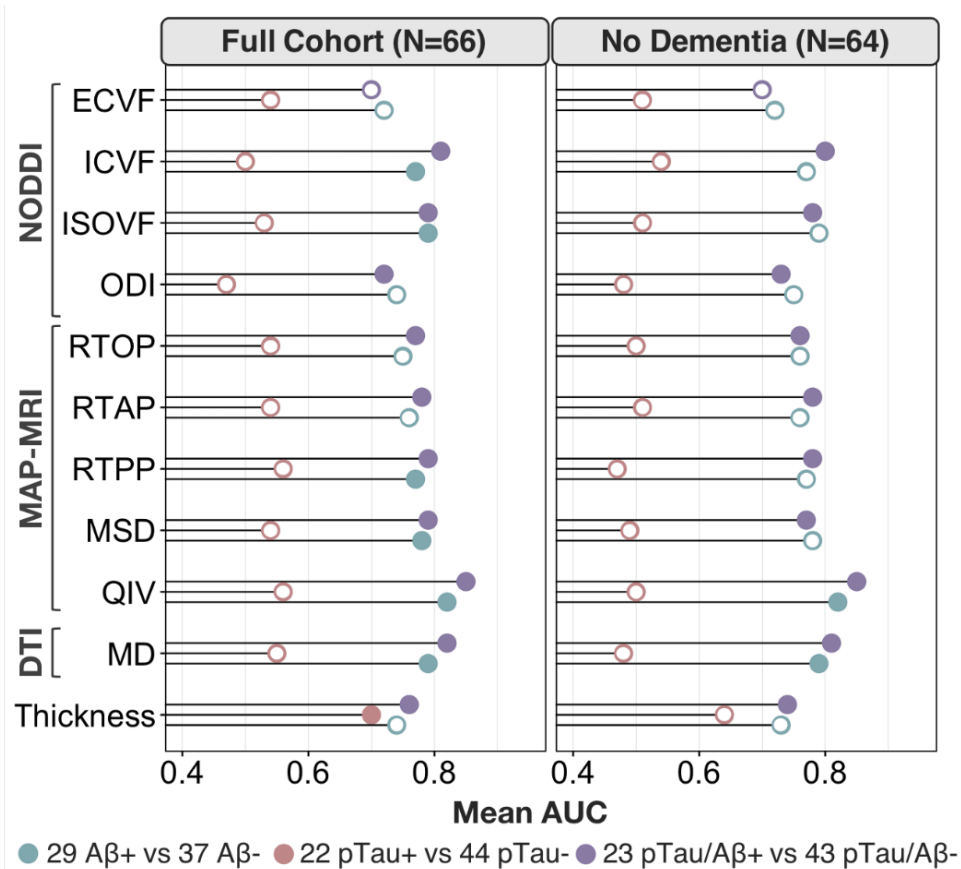
Supplementary Table 5. For each cortical AD-metaROI measure (not residualized), the average dichotomized CSF biomarker classification area under the curve (AUC) from 5 folds is reported.

Model	Measure	Full Cohort (N=66)			Exclude Dementia (N=64)		
		Aβ	pTau	pTau/Aβ	Aβ	pTau	pTau/Aβ
MT-NODDI	ECVF	0.67	0.63	0.70	0.69	0.62	0.66
	ICVF	0.73	0.63	0.89	0.80	0.57	0.84
	ISOVF	0.77	0.65	0.86	0.73	0.55	0.82
	ODI	0.66	0.61	0.81	0.80	0.61	0.74
MAP-MRI	RTOP	0.73	0.66	0.89	0.79	0.55	0.83
	RTAP	0.72	0.65	0.89	0.78	0.53	0.83
	RTPP	0.75	0.66	0.89	0.79	0.60	0.85
	MSD	0.76	0.65	0.87	0.69	0.64	0.85
	QIV	0.79	0.66	0.89	0.80	0.55	0.88
DTI	MD	0.77	0.66	0.88	0.79	0.60	0.87
FreeSurfer	CTh	0.66	0.69	0.76	0.60	0.76	0.61

2.7.2 Residualized cortical AD-metaROI measure CSF group classification

2.7.2.1 Logistic regression classification across participants

As reported in **Supplementary Figure 14** and **Supplementary Table 6**, residualized dMRI AD-metaROI measures (i.e., adjusted for age, sex, and education significantly distinguished A β ⁺ from A β ⁻ participants with similar performance from ICVF, ISOVF, RTPP, MSD, and MD (AUC=0.77-0.79), and QIV performing marginally better (AUC=0.82). In contrast, only cortical thickness significantly classified pTau₁₈₁ (AUC=0.70). pTau₁₈₁/A β ₁₋₄₂ status was also best classified by ICVF (AUC=0.81), MD (AUC=0.82), and QIV (AUC=0.85). Similar classification trends were found in the subset of participants without dementia.



Supplementary Figure 14. For each residualized cortical AD-metaROI measure, the area under the curve (AUC) of the dichotomized CSF group classifications are reported. Significant associations after multiple comparisons correction are indicated by filled circles (Full cohort: dMRI $p \leq 0.020$, CTh $p \leq 0.035$; No Dementia: dMRI $p \leq 0.017$, CTh $p \leq 0.17$).

Supplementary Table 6. For each residualized cortical AD-metaROI measure, dichotomized CSF biomarker classification area under the curve (AUC)

Model	Measure	Full Cohort (N=66)			Exclude Dementia (N=64)		
		A β	pTau	pTau/A β	A β	pTau	pTau/A β
MT-NODDI	ECVF	0.72	0.54	0.70	0.72	0.51	0.70
	ICVF	0.77**	0.50	0.81**	0.77*	0.54	0.80**
	ISOVF	0.79**	0.53	0.79**	0.79*	0.51	0.78**
	ODI	0.74*	0.47	0.72**	0.75*	0.48	0.73**
MAP-MRI	RTOP	0.75*	0.54	0.77**	0.76	0.50	0.76**
	RTAP	0.76*	0.54	0.78**	0.76*	0.51	0.78**
	RTPP	0.77**	0.56	0.79**	0.77*	0.47	0.78**
	MSD	0.78**	0.54	0.79**	0.78*	0.49	0.77**
	QIV	0.82**	0.56	0.85**	0.82**	0.50	0.85**
DTI	MD	0.79**	0.55	0.82**	0.79**	0.48	0.81**
FreeSurfer	CTh	0.74**	0.70**	0.76**	0.73	0.64	0.74**

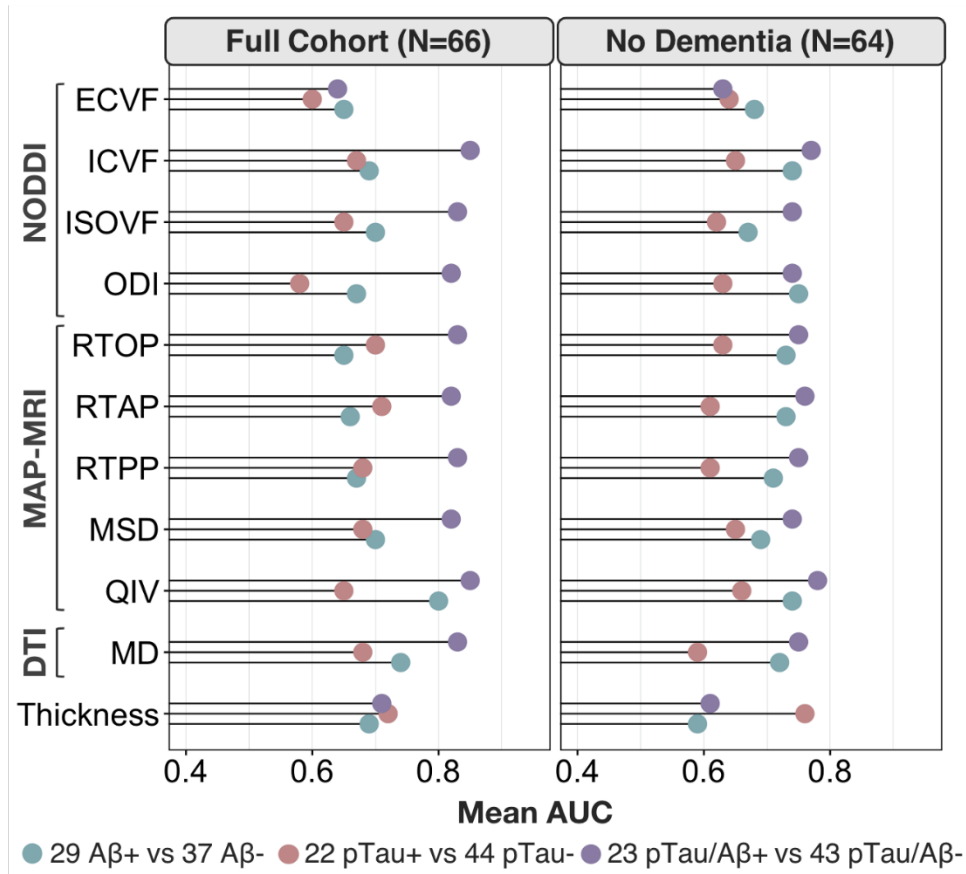
** Full cohort: dMRI $p \leq 0.020$, CTh $p \leq 0.035$

**No Dementia: dMRI $p \leq 0.017$, CTh $p \leq 0.17$

* $p < 0.05$

2.7.2.2 Five-fold logistic regression classification 80-20 split

As reported in **Supplementary Figure 15** and **Supplementary Table 7**, residualized dMRI QIV AD-metaROI measures best distinguished A β ⁺ from A β ⁻ participants (mean AUC=0.80). In contrast, for pTau₁₈₁ classification, cortical thickness (AUC=0.72), RTAP and RTOP (AUC=0.70-0.71) performed marginally better than other measures. pTau₁₈₁/A β ₁₋₄₂ status was best classified by dMRI measures (AUC=0.82-0.85), excluding ECVF, with ICVF and QIV performing marginally better (AUC=0.85). Similar classification trends were found in the subset of participants without dementia, the most notable differences being that compared to the full group 1) measures of restriction and ODI better classified A β status, and 2) there was an even more notable difference in pTau₁₈₁ classification accuracy between diffusion and thickness measures, with diffusion measures performing on average marginally worse than in the full group and cortical thickness performing better (AUC=0.76).



Supplementary Figure 15. For each residualized cortical AD-metaROI measure, the average dichotomized CSF biomarker classification area under the curve (AUC) from 5 folds is reported.

Supplementary Table 7. For each residualized cortical AD-metaROI measure, the average dichotomized CSF biomarker classification area under the curve (AUC) from 5 folds is reported.

Model	Measure	Full Cohort (N=66)			Exclude Dementia (N=64)		
		Aβ	pTau	pTau/Aβ	Aβ	pTau	pTau/Aβ
MT-NODDI	ECVF	0.65	0.60	0.64	0.68	0.64	0.63
	ICVF	0.69	0.67	0.85	0.74	0.65	0.77
	ISOVF	0.70	0.65	0.83	0.67	0.62	0.74
	ODI	0.67	0.58	0.82	0.75	0.63	0.74
MAP-MRI	RTOP	0.65	0.70	0.83	0.73	0.63	0.75
	RTAP	0.66	0.71	0.82	0.73	0.61	0.76
	RTPP	0.67	0.68	0.83	0.71	0.61	0.75
	MSD	0.70	0.68	0.82	0.69	0.65	0.74
	QIV	0.80	0.65	0.85	0.74	0.66	0.78
DTI	MD	0.74	0.68	0.83	0.72	0.59	0.75
FreeSurfer	CTh	0.69	0.72	0.71	0.59	0.76	0.61

2.8 Sensitivity analysis: Mediation analyses in non-demented participants

We conducted sensitivity analyses to determine whether the 10 significant mediating effects of cortical measures on the relationship between CSF biomarkers and delayed memory would hold after excluding individuals with dementia (N=2). Overall, mediation results were similar to those in the whole sample (**Supplementary Table 8**). Specifically, lower $A\beta_{1-42}$ ($p=0.02$; $\beta=0.27$) and greater $p\text{Tau}_{181}/A\beta_{1-42}$ ($p=5.6 \times 10^{-4}$; $\beta=-0.43$) were associated with worse delayed memory performance. As in the full group, the effect of $A\beta_{1-42}$ on delayed memory were fully mediated by ICVF and QIV, while the effect of $p\text{Tau}_{181}/A\beta_{1-42}$ was partially mediated by all eight dMRI AD-metaROI measures tested.

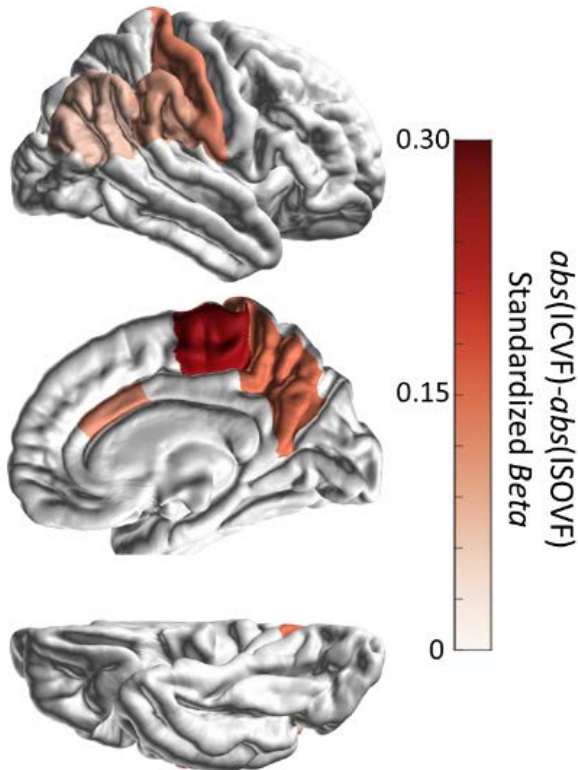
Supplementary Table 8. Sensitivity mediation analyses in participants without dementia.

Memory (DV)	CSF (IV)	MRI Model	Cortical Mediator	Direct Effect		Mediation Effect		
				β	P	β	P	%
WMS Logical Memory (N=64)	$A\beta$ $p=0.023$ $\beta=0.27$	MT-NODDI	ICVF	0.19	0.098	0.083	0.034**	30.1
		MAP-MRI	QIV	0.17	0.16	0.097	0.016**	36.2
	$p\text{Tau}/A\beta$ $p=5.6 \times 10^{-4}$ $\beta=-0.43$	MT-NODDI	ICVF	-0.35	0.004**	-0.09	0.048**	20.2
			ISOVF	-0.33	0.008**	-0.10	0.026**	23.8
		MAP-MRI	MSD	-0.34	0.006**	-0.09	0.026**	24.6
			QIV	-0.30	0.012**	-0.10	0.028**	24.8
			RTAP	-0.35	0.004**	-0.09	0.028**	25.2
			RTOP	-0.36	0.002**	-0.08	0.044**	23.7
			RTPP	-0.34	0.006**	-0.09	0.038**	22.6
		DTI	MD	-0.33	0.01**	-0.10	0.022**	24.4

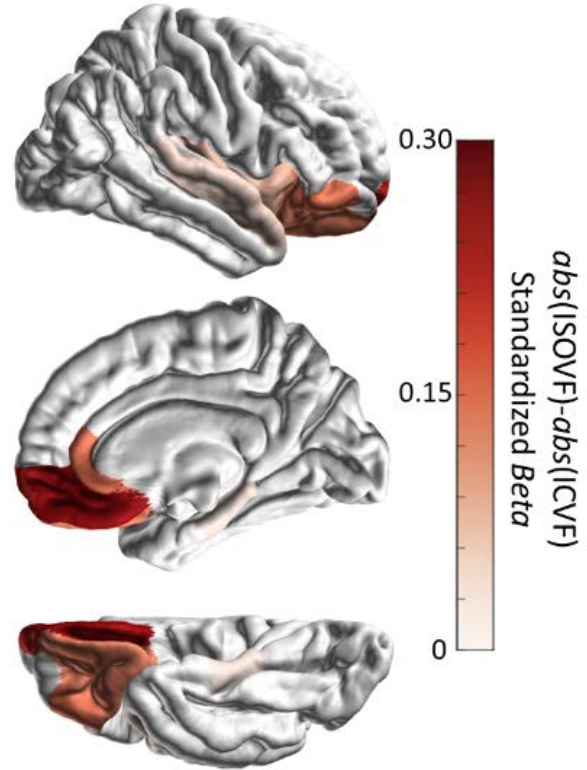
**Indirect $p < \text{FDR Threshold}$ for 10 tests; Direct $p \leq 0.012$; Mediation $p \leq 0.048$

2.9 Spatially distinct patterns of ICVF and ISOVF associations with amyloid

A ICVF effects not detected with ISOVF

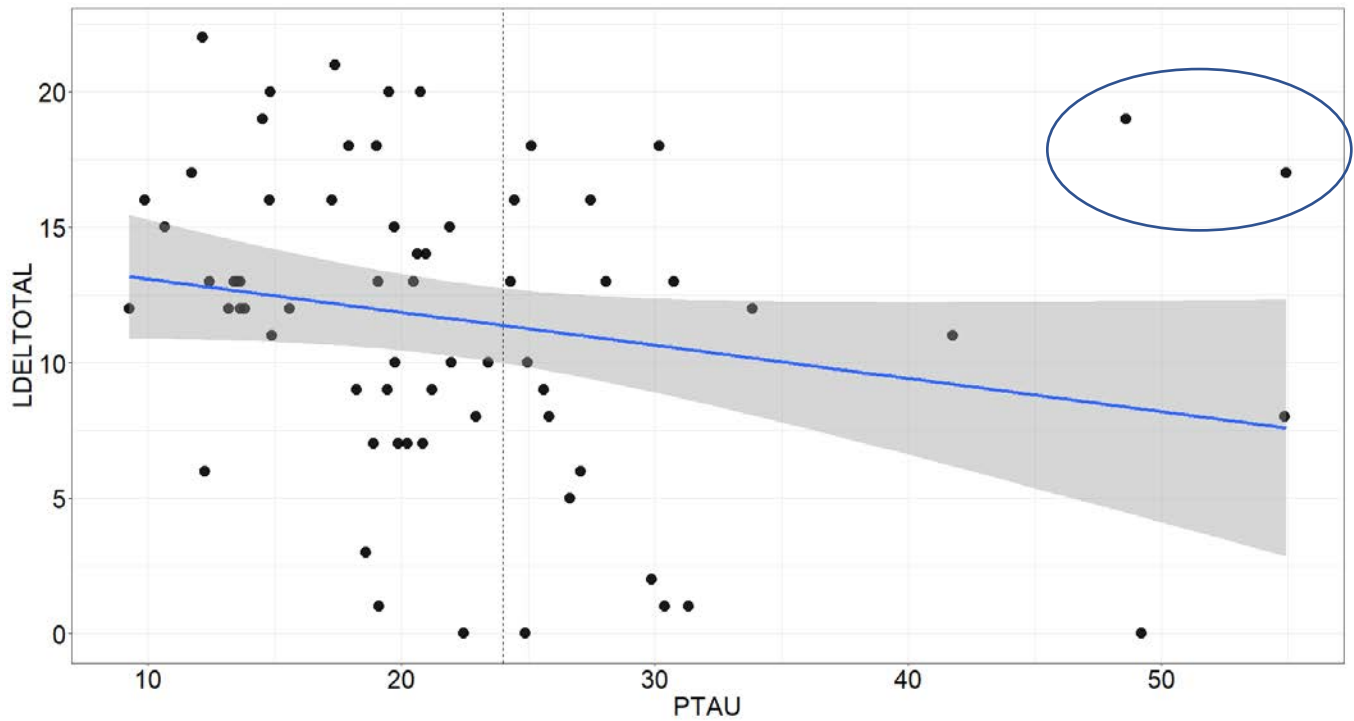


B ISOVF effects not detected with ICVF



Supplementary Figure 16. In all regions that were significantly associated with amyloid for either ICVF or ISOVF, but not both, we took the difference in magnitude of the effect sizes to capture the diverging patterns of effects. **(A)** In regions where only ICVF associations were significant, the absolute value of the ICVF effect minus the absolute value of the ISOVF effect revealed the largest differences in early/highly myelinated sensory-motor cortical regions like the paracentral cortex. **(B)** In regions where only ISOVF associations were significant, absolute ISOVF minus absolute ICVF effects revealed the largest differences in late/lightly myelinated cortical regions like the medial orbitofrontal cortex. These dMRI measures may capture the proposed inverse relationship between the pattern of pathology progression and myelination during development (Bartzokis et al. 2007; Braak et al 1996).

2.10 CSF pTau and delayed working memory



Supplementary Figure 17. The lack of significant associations between CSF pTau and delayed memory may be due in part to the limited number of participants in our study, particularly those with high pTau concentrations. Two CU individuals (one A β ⁺ and one A β ⁻) with high delayed memory scores and high pTau were sufficient to drive the association (or lack thereof).