

Word count: 4897 excl. ref.

Fig. 7

Tables 3

**Blood biomarkers in Takotsubo syndrome point to an emerging role for inflammaging in disease pathophysiology**

**Nagai, M.<sup>1†\*</sup>, Shityakov, S.<sup>2 †</sup>, Smetak M<sup>3</sup>, Hunkler, H.J. <sup>4</sup>, Bär<sup>4,5,6</sup>, C., Schlegel, N.<sup>7</sup>, Thum, T. <sup>4,5,6</sup>, Förster C. Y.<sup>3\*</sup>**

<sup>1</sup>Department of Cardiology, 2-1-1, Kabeminami, Aaskita-ku, Hiroshima City Asa Hiroshima 731-0293, JAPAN

<sup>2</sup>Infochemistry Scientific Center, Laboratory of Chemoinformatics, Lomonosova str. 9, Saint-Petersburg, 191002 Russian federation.

<sup>3</sup>University of Würzburg, Department of Anaesthesiology, Intensive Care, Emergency and Pain Medicine, Würzburg, Germany

<sup>4</sup>Institute of Molecular and Translational Therapeutic Strategies (IMTTS), Hannover Medical School, Hannover, Germany

<sup>5</sup>REBIRTH-Centre for Translational Regenerative Medicine, Hannover Medical School, Hannover, Germany

<sup>6</sup>Fraunhofer Institute for Toxicology and Experimental Medicine (ITEM), Hannover, Germany

<sup>7</sup>University of Würzburg, Department of General, Visceral, Transplant, Vascular and Pediatric Surgery, Würzburg, Germany

† These authors contributed equally to this work.

\* Correspondence: MN [nagai10m@r6.dion.ne.jp](mailto:nagai10m@r6.dion.ne.jp)

CF [foerster\\_c@ukw.de](mailto:foerster_c@ukw.de)

**Running title:** molecular catecholamine effects on endothelial and myocardial cells

**Abstract:** Takotsubo syndrome (TTS), an acute cardiac condition characterized by transient wall motion abnormalities mostly of the left ventricle, results in difficulties in diagnosing patients. We set out to present a detailed blood analysis of TTS patients analyzing novel markers to understand the development of TTS. Significant differences in pro-inflammatory cytokine expression patterns, sex steroid and glucocorticoid receptor (GR) expression levels were observed in the TTS patient

33 collective. Remarkably, the measured catecholamine serum concentrations determined from TTS  
34 patient blood could be shown to be two orders of magnitude lower than the levels determined from  
35 experimentally induced TTS in laboratory animals. Consequently, exposure of endothelial cells and  
36 cardiomyocytes in vitro to such catecholamine concentrations did not damage the cellular integrity or  
37 function of neither endothelial cells forming the blood brain barrier, endothelial cells derived from  
38 myocardium nor cardiomyocytes in vitro. Computational analysis was able to link the identified blood  
39 markers, specifically, the pro-inflammatory cytokines and glucocorticoid receptor GR to microRNA  
40 (miR) relevant in the ontogeny of TTS (miR-15), and inflammation (miR-21, miR-146a), respectively.  
41 Amongst the well-described risk factors of TTS (older age, female gender), inflammaging-related  
42 pathways were identified to add to these relevant risk factors or prediagnostic markers of TTS.

43

44 **Keywords:** Takotsubo syndrome, catecholamines, inflammation, aging, inflammaging, glucocorticoid  
45 receptor, cytokine, epinephrine, norepinephrine, dopamine

46

## 47 **1. Introduction**

48 Takotsubo syndrome (TTS), also known as broken heart syndrome, stress induced cardiomyopathy,  
49 and Takotsubo cardiomyopathy, is an acute cardiac syndrome with rapid onset of chest pain and  
50 dyspnea.<sup>1,2</sup> TTS is often triggered by physical and/or emotional stress and is characterized by a  
51 transient and reversible severe left ventricular dysfunction which typically recovers spontaneously  
52 within hours to weeks.<sup>3</sup> TTS is a remarkably like acute coronary syndrome (ACS) with almost the  
53 same clinical presentations and ST elevations; therefore, differential diagnosis is critically important  
54 in the emergency department. The prevalence of TTS has been reported to be approximately 2-3% of  
55 all patients with clinical appearance of ACS.<sup>3,4</sup>

56 At present TTS-related heart failure is believed to be chiefly induced by a so-called catecholamine  
57 (CAT) storm, e.g. increased circulating and myocardial CAT levels with myocardial toxicity.<sup>5-8</sup>

58 Central to this unifying hypothesis, the abnormal left ventricular contraction pattern is attributed to  
59 this CAT surge which triggers left ventricular wall motion abnormality, e.g. widespread dyskinesia in  
60 the apical segments and hyperkinesia in the basal segment of left ventricle (LV) with apical  
61 ballooning<sup>3,4</sup>; available information is however controversial<sup>9-11</sup>: As a pathophysiological  
62 mechanism, it is suggested that local differences in left ventricular (LV) adrenergic receptors may  
63 underly this LV wall motion abnormality.<sup>12,13</sup> In fact, experimental studies showed that the LV in  
64 canine has  $\beta$ 2-adrenoceptors ( $\beta$ 2-AR) that are expressed much more in the apical than in the basal

65 segments,<sup>14</sup> the signaling pathways leading to this aetiopathogenesis at any rate remain unclear. Feola  
66 et al. further supported this hypothesis with a myocardial PET study showing decreased coronary flow  
67 reserve and impaired metabolism in the apical segments during the acute phase of TTS.<sup>15</sup>  
68 Additional possible pathophysiological mechanisms have been suggested such as induced switch in  
69 signal trafficking, and autonomic nervous system dysfunction with cardiac sympathetic activation  
70 including the mentioned overstimulation of beta receptors.<sup>13, 16-19</sup> Female gender and age-related lack  
71 of female sex hormones are further well known characteristics of TTS patients.<sup>20</sup>  
72 Given that TTS is remarkably like ACS with almost the same clinical presentation and ST elevations;  
73 until to date, in the clinical practice, it is difficult to differentiate TTS from ACS at the at the moment  
74 of onset. No ECG criteria have been identified that reliably discriminate between TTS and ST-  
75 segment elevation myocardial infarction.<sup>21</sup> The ECG changes are transient and resolve within months  
76 in most cases.

77         Recent studies have identified microRNAs (miRNAs/miRs) as potentially promising sensitive  
78 and specific biomarkers for cardiovascular diseases such as TTS, including a unique signature of miR-  
79 1, miR-16, miR-26a and miR-133a, which differentiates TTS patients from STEMI patients.<sup>22,23</sup>  
80 Using blood samples from real-life patient cohorts, we set out to comprehensively quantify and  
81 characterize CAT levels and other blood-borne biomarkers (markers of inflammation, physical/  
82 emotional stress hormone and endogenous sex hormone levels and their receptors) to identify a set of  
83 novel TTS-associated biomarkers, pointing to inflammaging-associated triggers for TTS rather than  
84 direct CAT effects on cardiomyocytes and endothelial cells of the cardiovascular and cerebrovascular  
85 segments. By the help of systems biology we delineate new targets and specific molecular pathways  
86 which will allow the development of precision medicine in the prevention and therapy of TTS in the  
87 future.

88

## 89 **2. Materials and Methods**

### 90 *Study population and human patient serum*

91 Patient serum preparation from human blood was performed as described previously.<sup>24,25</sup> Briefly,  
92 human blood was collected using S-Monovette tubes (Sarstedt). We sampled blood from 25  
93 pseudonymized patients and subsequently divided into 5 (6 for cytokine measurements) different  
94 groups: postmenopausal healthy patients, n=3, premenopausal healthy patients, n=3, ACS acute (<6  
95 weeks), n=4, TTS acute (first 2 weeks after onset), n= 4, TTS subacute (2-6 weeks after onset), n=8,  
96 TTS chronic (>6 weeks), n=3. All patients were diagnosed according to the InterTAK Diagnostic  
97 Criteria.<sup>26</sup> As healthy controls subjects were selected that did not present with altered coronary arteries

98 in the coronary angiography diagnostics, while minor cardiovascular or endocrinological diseases  
99 were accepted (e.g.: arterial hypertension, diabetes mellitus).

100 For serum preparation, all the blood was drawn from subjects in using S-Monovette collection tubes  
101 (Sarstedt) and incubated at room temperature for 60 min. Then, the blood samples were centrifuged at  
102  $1500 \times g$  for 15 min, the serum was isolated, immediately frozen and stored at  $-80^{\circ}\text{C}$  until the  
103 extraction. All the methods used in this study were performed in accordance with the relevant  
104 guidelines and regulations. Serum samples were quantified and analyzed individually.

105

#### 106 *Ethics approval and consent to participate*

107 The study protocol was approved by the Hiroshima City Asa Hospital Research Committee (01-3-3)  
108 as previously described.<sup>24</sup>

109

#### 110 *Study design - Human patient serum*

111 Patient blood serum preparation was performed as described previously.<sup>24,25</sup>

112

#### 113 *Biochemical analyses*

114 Blood samples were drawn after 10-min rest in the supine position in the morning. Adrenaline,  
115 noradrenaline, and dopamine concentrations in the plasma were assessed by high-performance liquid  
116 chromatography (SRL Inc., Tokyo, Japan). Serum cortisol concentrations were determined by  
117 electrochemiluminescence immunoassay (Elecsys®, Roche Diagnostics, Basel, Switzerland). While  
118 testosterone was measured using radioimmunoassay kits,  $17\beta$ -estradiol was measured using an ultra-  
119 sensitive radioimmunoassay kit (Elecsys®, Roche Diagnostics, Basel, Switzerland).

120

#### 121 *Endothelial cell cultures*

122 The mouse brain capillary endothelial cell line cEND and MyEND were immortalized and isolated as  
123 described previously<sup>27-29</sup> and cultured in Dulbecco's modified Eagle's medium (DMEM) with high  
124 glucose (Sigma) supplemented with l-glutamine, MEM-vitamin solution, non-essential amino acids  
125 (NEA), Na pyruvate, penicillin/streptomycin (P/S) (all from Sigma) 10% heat-inactivated fetal calf  
126 serum (FCS) as described previously.<sup>30</sup>

127

#### 128 *Human iPSC maintenance and cardiac differentiation*

129 Human induced pluripotent stem cells (iPSC)<sup>33</sup> were cultivated in StemMACS medium (StemMACS  
130 iPS-Brew XF with supplement, Miltenyi Biotec, #130-104-368) on Geltrex (Gibco, A1413302) and  
131 differentiated into cardiomyocytes via Wnt modulation as described before.<sup>34-36</sup> Briefly, iPSCs were  
132 grown to confluency and passaged with Versene (Gibco, 15040066) in StemMACS medium with 2  
133  $\mu$ M Thiazovivin (Selleckchem, S1459). Directed cardiomyocyte differentiation was initiated at 70-  
134 80% confluency with 5  $\mu$ M GSK-3 inhibitor XVI (Merck, 361559) in cardio differentiation medium  
135 (250 mg human recombinant albumin (Sigma-Aldrich, A9731), 100 mg L-AA (L-ascorbic acid 2-  
136 phosphate sesquimagnesium salt hydrate, Sigma-Aldrich, A8960) in 500 ml RPMI medium (RPMI  
137 1640 + GlutaMAX, Gibco, 72400047) for 48 h. Subsequently, medium was changed to cardio  
138 differentiation medium supplemented with 5 mM IWP-2 (Selleckchem, S7085), a Wnt signaling  
139 inhibitor for 48 h followed by medium changes with cardio differentiation medium every 48 h. At  
140 differentiation day 8, when cells start to contract spontaneously, cardiomyocytes were cultured in 1x  
141 B-27 (Gibco, 17504001) in RPMI 1640 + GlutaMAX medium, with medium changes every 2 to 3  
142 days.

143 Cardiomyocytes were purified by metabolic selection<sup>37</sup> with 4 mM DL-lactate (Merck, L4263, in 1 M  
144 HEPES, Carl Roth, HN77.3) in no glucose RPMI medium (RPMI 1640, no glucose, Gibco,  
145 11879020) with 250 mg human recombinant albumin and 100 mg L-AA. Experiments were  
146 performed in iPSC-derived cardiomyocytes between day 55-80 of differentiation.

147

#### 148 *Catecholamine treatment in vitro*

149 cEND and MyEND were treated with a physiological and supraphysiological CAT mix –  
150 corresponding concentration c1-c3 as determined from TTS patient serum, comp. **table 1**, epinephrine  
151 (Sigma-Aldrich, E4250), norepinephrine (Sigma-Aldrich, A0937) and dopamine (Sigma-Aldrich,  
152 H8502) in the respective cell culture media for 24 h. Epinephrine and norepinephrine were dissolved  
153 in 0.5 M HCl, dopamine in medium, for the dilutions medium was used.

154 For CAT treatment of iPSC-derived cardiomyocytes, human iPSC-derived cardiomyocytes were  
155 treated with a physiological mix of these CATs, epinephrine (Sigma-Aldrich, E4250), norepinephrine  
156 (Sigma-Aldrich, A0937) and dopamine (Sigma-Aldrich, H8502)), – corresponding concentration c3/  
157 TTS acute levels as determined from TTS patient serum, comp. **table 1** in RPMI medium  
158 supplemented with 1x B-27 (Gibco, 17504001) for 24 h. Additionally to the CAT mix designated c3,  
159 cells were treated with a supraphysiological concentration of 5 mM isoprenaline (Sigma-Aldrich,  
160 I6504).<sup>38</sup>

161

162 *Gene expression analysis in cEND and MyEND cells*

163 For RT-PCR, RNA isolation and Real-time RT PCR was performed as described.<sup>30</sup>

164

165 *Western blot analysis in cEND and MyEND cells*

166 The images were taken with FluorChem FC2 Multi-imager II (Alpha Innotech). The ImageJ software  
167 was used to determine the density of the protein bands.

168

169 *Extraction of exosomes from human serum and western blot assay*

170 For extraction of the exosomes, 400 µl of serum was centrifuged (30 minutes, 4°C, 2000 rcf). 300µl of  
171 the supernatant was then mixed with 60µl of total exosome isolation reagent (Thermo Fisher  
172 Scientific, #4478360) and incubated for 30 minutes at 4°C. After centrifugation (10 minutes, RT,  
173 10000 rcf), the pellet was mixed with 200µl RIPA Buffer containing a protease inhibitor cocktail  
174 (ROCHE).

175

176 *antibodies*

177 primary: GR H-300 (1:200, Santa Cruz Biotechnology, #sc-8992), mouse anti-claudin-5 (1:1000,  
178 Thermo Fisher Scientific, #35-2500), guinea pig anti-occludin (1:100, Acris, #358-504), rabbit anti-  
179 ZO-1 (1:1000, Thermo Fisher Scientific, #61-7300), anti-β-actin-HRP (1:25000, Sigma-Aldrich,  
180 #A3854), anti-goat VE-cadherin (1:200, Santa Cruz Biotechnology, #sc-6458).

181 Secondary: goat anti-rabbit HRP (1:15000, System Biosciences, #EXOAB-CD63A-1) was used.

182 and rabbit anti-human CD63 (1:1000, System Biosciences, #EXOAB-CD63A-1).

183

184 *Gene expression analysis in cardiomyocytes*

185 RNA were isolated with QIAzol Lysis Reagent (Qiagen, 79306) and reverse transcribed with the  
186 Biozym cDNA synthesis kit (Biozym, 3314710X) according to manufacturer's guidelines. Gene  
187 expression levels were measured by RT-qPCR with iQ SYBR Green Supermix (Bio-Rad, 1708880).  
188 The expression levels of NR4A1 were evaluated with the ΔΔCT method and normalized to the  
189 expression of the housekeeper GUSB (β-glucuronidase).

190

191 Primer sequences (5' to 3'):

192 forward reverse

193 NR4A1 GTGTGTGGGGACAACGCTTC CCACAGGGCAGTCCTTGTT

194 GUSB GACACCCACCACCTACATCG CTTAAGTTGGCCCTGGGTCC

195

### 196 *Cytokine Immunoassay*

197 Cytokines INF $\gamma$ , IL-2, IL-4, IL-6, IL-10, TNF $\alpha$ , EGF, IL-17, IL-17A, MIP3A, CCL20/MIP3A,  
198 RANTES were measured in duplicates in the different patients serum by using a multi-analyte  
199 immunoassay (Millipore, HCYTOMAG-60K) with Luminex $\text{\textcircled{R}}$  bead technology according to  
200 manufacturer's instruction.

201

### 202 *Computational analysis*

203 The Cytoscape v.3.7.1 software was implemented to generate the human gene-miR interaction  
204 pathways linked to the searched miRs (miR-15, miR 26a, miR-21, and miR-146a) and  
205 proinflammatory cytokines (INF $\gamma$ , IL-2, IL-4, IL-6, IL-10, TNF $\alpha$ , EGF, IL-17, IL-17A, MIP3A,  
206 CCL20/MIP3A, and RANTES). The miRTarBase and TargetScan databases were used for the miR-  
207 target gene interaction types together with a list of the searched miRs by using the CyTargetLinker  
208 app v4.10.<sup>39</sup> For the gene-gene interaction network containing proinflammatory cytokines, the  
209 GeneMANIA algorithm was applied comprising 911 networks and 24280 genes.<sup>40,41</sup> Finally, the  
210 merge tool as a part of the Cytoscape pipeline was implemented to merge previously generated  
211 networks combining analyzed miRs and cytokines.

212

### 213 *Analysis and statistics*

214 Data are shown as mean and standard deviation (SD) of biological independent experiments. One-way  
215 ANOVA with Dunnett's multiple comparison test or Tukey's t-Test as indicated in the figure legends  
216 was performed to evaluate the statistical significance between untreated and treated cells with  
217 GraphPad Prism 8. P < 0.05 was considered as significant, \* P < 0.05, \*\* P < 0.01, \*\*\* P < 0.001.

218

## 219 **3. Results**

### 220 *Quantification of catecholamines in serum of patients with different heart diseases*

221 The CAT noradrenaline, adrenaline and dopamine were measured in serum of postmenopausal healthy  
222 patients and patients admitted with TTS (acute and subacute phase). Significantly elevated  
223 noradrenaline ( $5.23 \pm 5.69$  pmol/l) vs. ( $4.24 \pm 1.52$  pmol/l) and dopamine ( $0.80 \pm 1.06$  pmol/l ) vs.  
224 ( $0.18 \pm 0.08$  pmol/l) levels were detected in the TTS subacute group exclusively, all other levels did  
225 not differ significantly from the control group, postmenopausal healthy females (Table 1). Among the  
226 three CAT, noradrenaline showed highest absolute serum levels among the groups, while dopamine  
227 and adrenaline varied.

228 In the following, endothelial cells and cardiomyocytes were treated in vitro with the different CAT  
229 concentrations as determined from TTS acute and TTS subacute patient serum as opposed to  
230 pharmacological concentrations (concentration c1 pharmacological concentrations<sup>42</sup>: 150µM  
231 dopamine, 1µM epinephrine, 1µM norepinephrine; c2 postmenopausal healthy control; c3 TTS acute;  
232 c4 TTS subacute, comp. Table 1).

233  
234 *The concentration-dependent effects of CAT on cEND brain endothelial cells in vitro*

235 To investigate the concentration-dependent change in protein expression of barrier-forming proteins  
236 claudin-5, occludin, VE-cadherin and ZO-1 following CAT exposure in vitro, cEND cells were  
237 incubated with the different concentrations of the CAT dopamine, epinephrine and norepinephrine as  
238 determined from patient serum comp. Table 1 compared to an exposure to supraphysiological/  
239 pharmacological concentrations<sup>42</sup> for 24h.

240 Changes in protein levels were determined by Western blot analysis and compared to the untreated  
241 control group (Figure 1). Only the supraphysiological/ pharmacological c1 concentration showed  
242 significant effects on the protein expressions: ZO-1, VE-cadherin and occludin expression were  
243 significantly reduced ( $0.451 \pm 0.130$ -fold) and ( $0.186 \pm 0.069$ -fold). Surprisingly, claudin-5 expression  
244 was significantly increased ( $1.761 \pm 0.312$ -fold). cEND monolayer exposure to CATs in concentration  
245 ranges as as determined from TTS patient serum (c2, c3, c4) showed no significant change in the  
246 protein expression.

247  
248 The concentration-dependent changes in mRNA expression were determined by qRT-PCR analysis  
249 and compared to the untreated control group (Figure 2). Only the supraphysiological/ pharmacological  
250 c1 concentration showed significant effects on the mRNA expression. Claudin-5 expression was  
251 significantly reduced ( $0.610 \pm 0.059$ -fold). Also, VE-cadherin and ZO-1 showed a significant  
252 reduction ( $0.582 \pm 0.139$ -fold) and ( $0.478 \pm 0.085$ -fold). Exposure of cEND monolayers with CATs in  
253 concentrations as determined from TTS patient serum (c2, c3, c4) and occludin showed no significant  
254 change on the mRNA expression (Figure 2).

255  
256 *The concentration-dependent effects of catecholamines on MyEND cells*

257 To investigate the concentration-dependent change in protein expression, MyEND cells were  
258 incubated with the different concentrations of the CATs dopamine, epinephrine and norepinephrine as  
259 described for Fig. 2 for 24h. Changes in protein levels were determined by Western blot analysis and  
260 compared to the untreated control group (Figure 3). Only the supraphysiological/ pharmacological c1



261 concentration showed significant effects on the protein expressions: Claudin-5 expression levels were  
262 significantly decreased in this application ( $0.275 \pm 0.067$ -fold), and occludin expression was  
263 significantly reduced ( $0.686 \pm 0.122$ -fold). The other CAT concentrations applied as determined from  
264 TTS patient serum (c2, c3, c4) showed no significant change in the protein expression of claudin-5 or  
265 occluding (data not shown).

266  
267 The concentration-dependent changes in mRNA expression were equally determined by RT-qPCR  
268 analysis and compared to the untreated control group (Figure 4). Claudin-5 ( $0.312 \pm 0.09$ -fold) and  
269 occludin ( $0.473 \pm 0.055$ -fold) expression were significantly reduced after incubation with CAT in  
270 concentration c1 (pharmacological). Occludin expression was significantly reduced as well after  
271 incubation with c1. VE-cadherin and ZO-1 showed a significant reduction after c1 incubation ( $0.438$   
272  $\pm 0.020$ -fold) and ( $0.463 \pm 0.0259$ -fold), respectively.

273  
274 *The concentration-dependent effects of CATs on iPSC-derived cardiomyocytes*

275 To investigate the effects of physiological concentrations of CATs (CAT) in TTS patients on the  
276 myocardium, we treated human iPSC-derived cardiomyocytes with CATs for 24 h. To determine  
277 changes in cardiomyocytes upon CAT treatment, we analyzed the expression level of nuclear receptor  
278 subfamily 4 group A member 1. This hormone receptor is well expressed in the heart and upregulated  
279 after  $\beta$ -adrenergic stimulation.<sup>12</sup> Additionally to the CATs, cardiomyocytes were treated with a  
280 supraphysiological concentration of isoprenaline (Iso). As reported by Borchert et al. the treatment  
281 with Iso lead to a significant increase of the cardiac stress marker, whereas physiological CAT  
282 concentrations showed no alterations in cardiomyocyte stress levels (Fig. 1a). Multiples of the  
283 physiological CAT concentration ( $10^3$  and  $10^6$  of the physiological concentration) lead to cardiac  
284 stress indicated by increased expression of NR4A1 (Fig. 1b),  $10^9$ -fold of the physiological  
285 concentration were lethal for the cardiomyocytes.

286  
287 *Quantification of cytokines and chemokines in patient serum*

288 A previous study demonstrated that treatment with inflammatory cytokines (TNF $\alpha$ , Interleukin-6)  
289 leads to compromised endothelial barrier function and reduced or altered junctional protein expression  
290 established in vitro model of the BBB, cEND cells<sup>43</sup> and in in vivo studies.<sup>44</sup> Based on these findings,  
291 we hypothesized that inflammation is central to the pathophysiology of TTS and explored the time  
292 course and persistence of detectable potentially involved pro-inflammatory cytokines. we

293 hypothesized that inflammation is central to the pathophysiology and natural history of Takotsubo  
294 syndrome.

295  
296 We compared the concentration of different cytokines and chemokines in the sera of premenopausal  
297 healthy patients, postmenopausal healthy patients, TTS acute, TTS subacute, TTS chronic and ACS  
298 (Table 2). Although no statistical significance was found, the concentration of TNF $\alpha$ , IL-2, IL-4 and  
299 IL-6 show a tendency to be elevated in the TTS acute group compared to all other groups. In  
300 comparison, in the TTS subacute group the concentration of MIP3A, RANTES, EGF, and IL-17 show  
301 a tendency to be elevated compared to all other groups. INF $\gamma$  and IL-10 show higher levels in the  
302 postmenopausal healthy group compared to the other groups.

303  
304 *Quantification of testosterone and estradiol in serum of patients with various heart diseases and*  
305 *correlation between testosterone-to-estradiol ratio*

306 The sex hormones testosterone and estradiol were measured in serum of healthy postmenopausal  
307 patients and patients with TTS (acute, subacute and chronic). The different hormone levels were  
308 compared to healthy postmenopausal patients. There was no significant difference between the groups  
309 detectable (Table 3).

310  
311 The following ratio between testosterone and estradiol (T:E2) as measured in the serum of patients  
312 with various heart diseases was calculated: mean T:E postmeno [5.77+0,2]; premeno diestrous [0.5 $\pm$   
313 0.1]; postmeno estrous [8.1 $\pm$ 3.3]; TTS acute [32 $\pm$ 0.4]; TTS subacute [6.7 $\pm$ 0.1]; TTS chronic  
314 [16.11 $\pm$ 0.3]. As reference values for healthy premenopausal females the E2-values estrous / di-  
315 estrous (400 pg/ml /50 pg/ml) were used, respectively (University of Rochester, medicine labs).

316 The calculated T:E2 ratio was the highest in acute TTS serum (32-fold), followed by chronic TTS (26-  
317 fold) and subacute TTS (8-fold). Lowest T:E2 ratios were measured in the healthy groups.

318  
319 *Protein expression of glucocorticoid receptor  $\alpha$  in exosomes of serum from patients with various heart*  
320 *diseases*

321 Glucocorticoids are primary stress hormones necessary for life that regulate numerous physiologic  
322 processes in an effort to maintain homeostasis.<sup>45</sup> Glucocorticoids are part of the feedback mechanism  
323 in the immune system, which reduces certain aspects of immune function, such as inflammation. The  
324 glucocorticoid receptor (GR) is a member of the nuclear hormone receptor superfamily that is

325 activated as a stress-responsive transcription factor upon binding glucocorticoids.<sup>45</sup> We set out to  
326 determine the levels of GR $\alpha$  in patient blood.

327 For this, after extraction of the exosomes of serum from patients with various heart diseases, Western  
328 blot analysis of glucocorticoid receptor  $\alpha$  was performed. Changes in protein levels were compared to  
329 the healthy postmenopausal group showing a clear trend towards elevation in all TTS group,  
330 remarkably the TTS acute and TT chronic groups. Remarkably, even though not significant, values  
331 determined from female TTS patients approximate the much higher serum GR levels from male (1,59  
332 of healthy female premenopausal) than as determined from healthy females (postmenopausal healthy  
333 set =1; premenopausal healthy =  $0.7 \pm 0.55$ ).

334

### 335 *Bioinformatic Analysis*

336 Next, we set out to relate the identified inflammatory cytokines present in TTS patient blood to  
337 published miRNA in TTS and aging and age-related disease and inflammaging and the CATs  
338 described to play a role in the etiology of TTS.<sup>5-8, 22, 23, 46, 47</sup>

339 A potential miRNA-cytokine-steroid hormone-receptor regulatory network contributing to TTS was  
340 developed:

341

342 The Cytoscape algorithm was able to reconstitute a detailed GMI network comprising 2989 nodes and  
343 6000 edges associated with the corresponding miRs by utilizing the miRTarBase and TargetScan  
344 databases (Figure5).<sup>39</sup> Next, the GGI network was built using the GeneMANIA algorithm for the  
345 corresponding blood markers and proinflammatory cytokines comprising 211 nodes and 626 edges  
346 (Figure 6).<sup>41</sup> Finally, the merged network was compiled from the GMI and GGI networks containing  
347 3152 nodes and 5735 edges to connect the blood markers, pro-inflammatory cytokines, and  
348 glucocorticoid receptor gene (NR3C1) to miRs (Figure 7 [A]).<sup>40</sup> This network was processed by  
349 subtracting the analyzed nodes to identify only direct gene-miR interactions (Figure 7 [B]). As a  
350 result, IL-6, CCL5, CCL20, and INF $\gamma$  were predicted to be interacted with analyzed miRs directly,  
351 while the rest of the genes were involved in indirect interaction with the investigated miRs.

352

## 353 **4. Discussion**

354 In the clinical practice, a few blood biomarkers are being used to diagnose and monitor TTS relative  
355 to the ACS which is characterised by almost the same clinical presentations and ST elevations. These  
356 biomarkers serve to predict response to treatment as well as long-term prognosis; blood troponin T,

357 BNP or creatine kinase-MB (CK-MB) are the most frequently surveyed markers.<sup>48,49</sup> These markers  
358 together with clinicopathological findings<sup>50,51</sup> do convey only insufficient diagnostic accuracy.

359

### 360 *TTS patient serum catecholamine levels*

361 Takotsubo patients present with supraphysiologic plasma CAT levels (epinephrine, norepinephrine,  
362 dopamine), which is generally believed to be a cardiotoxic trigger<sup>10,11</sup> causal for the abnormal LV  
363 contraction pattern in TTS.<sup>10, 11, 52</sup> Available information remains however controversial<sup>9, 53</sup> and  
364 heavily relies on disease modeling in a dish<sup>30</sup> or using the isoprenaline rodent model of TTS<sup>38</sup> creating  
365 a supraphysiological CAT exposure for the cell systems or animals investigated while CAT effects on  
366 the cardiovascular system in narrower physiological ranges remain elusive. Supporting the CAT  
367 hypothesis, some cross-field references can be found in the literature, e.g. pheochromocytoma-related  
368 conditions is a CAT-mediated myocarditis and focal/diffuse myocardial fibrosis condition.<sup>54</sup> Contrast  
369 to this hypothesis, our in vitro assessments did not point to structural endothelial cell (from BBB,  
370 myocard) or cardiomyocyte damage when exposed to CAT in concentrations as determined from TTS  
371 patient blood.

372 Indirect CAT effects on the cardiovascular system in the pathogenesis of TTS should therefore be  
373 considered: meanwhile it has been acknowledged that immune and central nervous systems mutually  
374 influence on one another in a bidirectional way, eg in the physiological stress response.<sup>55</sup> Specifically,  
375 the contribution of the locus coeruleus, the principal site for brain synthesis of norepinephrine in the  
376 genesis of defeat-stress induced inflammatory signaling should be mentioned.<sup>56</sup>

377 To conclude, CAT serum levels a reliable TTS biomarker, further research is needed to examine the  
378 link between CATs and TTS disease ontogeny. In the following we thus concentrated on an  
379 elucidation of disparate novel blood-borne biomarkers of stress and sex differences and inflammation  
380 in this stress-related disease.

381

### 382 *TTS patient GR serum levels*

383 We did observe a consistent trend towards elevated GR levels in TTS patient serum. Measured GR  
384 serum levels in TTS patient blood clearly exceeded the average postmenopausal healthy female levels  
385 1.6-fold and came close to the values determined from male blood donors.

386 Generally, stress responses are inhibited by negative feedback mechanisms, whereby glucocorticoids  
387 act to diminish drive (brainstem) and promote transsynaptic inhibition by limbic structures (e.g.  
388 hippocampus) including feedback downregulation of GR.<sup>57</sup> In contrast, elevated GR<sup>58,59</sup> expression  
389 has been described as a suitable surrogate marker and to positively correlate with glucocorticoid

390 resistance in chronic stress.<sup>60</sup> Chronic stress-induced activation of the hypothalamus-pituitary-adrenal  
391 axis takes many forms (chronic basal hypersecretion, sensitized stress responses, and even adrenal  
392 exhaustion), with manifestation dependent upon factors such as stressor chronicity, intensity,  
393 frequency, and modality and involves GR insensitivity and upregulation.<sup>57</sup> Neural mechanisms driving  
394 acute and chronic stress responses can be distinct by the serum GR expression, taking into account  
395 age, gender and reproductive cycle biases.<sup>61</sup>

396 Activation of the HPA-axis and sympathetic nervous system overdrive, which are established  
397 mechanisms critically involved in the TTS ontogeny are widely accepted to link specifically chronic  
398 stress with elevated levels of peripheral pro-inflammatory markers in blood.<sup>62</sup> Yet, empirical evidence  
399 showing that peripheral *levels* of glucocorticoids and/or CATs mediate this effect is equivocal. Recent  
400 attention has turned to the possibility that cellular *sensitivity* to these ligands may enhance the effects  
401 of inflammatory mediators released under chronic stress.

402 The glucocorticoid resistance in conjunction with  $\beta$ 2-adrenergic receptor signaling pathways in  
403 neuronal cells was presented to promote peripheral pro-inflammatory conditions that were postulated  
404 to be associated with chronic psychological stress.<sup>63</sup>

405 However, given the limited size of our study and patient cohort, further research is warranted to  
406 examine the link between serum stress, GR $\alpha$  levels and TTS disease progression in female  
407 postmenopausal patients.

408

#### 409 *Inflammation: cytokines and chemokines in patient serum*

410 The existence of an immune-endocrine relation has been described, pointing out the immuno-  
411 modulatory effects of the CATs epinephrine, norepinephrine and dopamine on a wide variety of  
412 immune functions.<sup>64</sup> The authors described that the immunomodulatory effects are mediated by  
413 specific adrenergic and dopaminergic receptors detectable on the surface of their immunological target  
414 cells and that CATs released within the CNS may chiefly influence the activity of the immune system  
415 in the periphery.<sup>64</sup>

416 We explored expression levels and time course of expression of various pro- and antiinflammatory  
417 cytokines while comparing their levels to healthy pre- and postmenopausal subjects plus ACS  
418 patients.

419 Patients with acute TTS had higher serum concentrations of IL-6, CXCL1 (growth-regulated protein)  
420 chemokine, TNF $\alpha$ , INF $\gamma$ , IL-2 and IL-4 compared with control subjects and acute ACS patients,  
421 respectively, while EGF-levels were decreased. This observation was in agreement with prior

422 observations published by Scally et al.<sup>65</sup> and Santoro,<sup>66</sup> which also compared inflammatory patterns  
423 in TTS and ACS.

424 Based on the data presented, monitoring the elevation of the cytokines IL-6, TNF $\alpha$ , and INF $\gamma$  serum  
425 levels might be suitable to distinguish TTS acute from ACS, again highlighting the importance of  
426 inflammation in the etiology of TTS.

427 Novel acute phase markers identified include the elevation of both, IL-2 and IL-4. The exploitability  
428 of IL-2 (increase) and IL-10 (decrease) as both disease phase markers and distinction markers  
429 ACS:TTS needs further exploitation in bigger patient cohorts and warrants future potential as relapse  
430 indicators.

431 The evaluation of IL-2 could represent a novel, TTS acute phase marker, facilitating the  
432 discrimination from ACS. Specifically, as IL-2 has been characterized as an anti-inflammatory  
433 cytokine, the determination of its levels from patient serum might be a tool to potentially predict  
434 propensity to relapse.<sup>67</sup> However, taking into account the limited number of samples available, a  
435 follow-up study including higher sample numbers would be mandatory before final conclusion could  
436 be drawn about the suitability of IL-2 as TTS acute phase marker or to differentiate TTS from ACS, or  
437 its potential suitability as a relapse marker.

438 The subacute cytokine profile is most distinctively characterized by elevations in MIP3A, a so far not  
439 yet addressed cytokine in frame of TTS, in EGF, TNF $\alpha$ , IL-17 and, interestingly pronounced  
440 decreases in IL-10.

441 Amongst those, IL-17 might represent a future therapeutic target in TTS: Interleukin-17 (IL-17)  
442 induces the production of granulocyte colony-stimulating factor (G-CSF) and chemokines such as  
443 CXCL1 and CXCL2 and is a cytokine that acts as an inflammation mediator.<sup>68</sup>

444 Taken together, while the elevation of IL-6, IL-2, IL-4, TNF $\alpha$ , INF $\gamma$  and CXCL1 can be regarded as  
445 TTS acute phase serum markers, a sharp increase in MIP3A and a pronounced decrease in IL-10 was  
446 detectable in the TTS subacute, phase which culminated in the chronic phase but also in ACS. In  
447 contrast, IL-10 levels were the highest in the postmenopausal healthy group.

448

#### 449 *Sex differences*

450 The epidemiological link between female sex and the incidence of TTS cannot be fully explained by  
451 stress induced CAT or corticosteroid levels, only. Additional factors, such as female sex or hormone  
452 receptor regulation and dysregulated immune response could be an important factor for this specific  
453 form of heart failure in postmenopausal patients. Consistent with prior studies, we found strong

454 associations between reduced female sex steroid levels and further extended these studies by  
455 calculating an T:E2 ratio which was elevated pronouncedly in TTS patients. Several points could be  
456 taken into account:

457 Women mount stronger immune responses not only against foreign but also against self-  
458 antigens, and the prevalence of most autoimmune diseases (AD) is greatly increased in women  
459 compared to men. An important role underlying the difference in activity of immune cells in men and  
460 women is attributed to sex hormones.<sup>4,5</sup>

461

462 Sexually dimorphic actions of glucocorticoids have been shown to provide a link to inflammatory  
463 diseases with gender differences in prevalence.<sup>59</sup>

464 Our data strongly resonate with findings of Walsh et al.<sup>63</sup> who report the consistent observation of  
465 elevated levels of peripheral pro-inflammatory markers accompanying chronic stress in humans,  
466 which associates with not only heightened GR expression, an assumed result of decreased cellular  
467 GR sensitivity, and alterations in  $\beta$ -AR signaling, which was interpreted to be based on myeloid  
468 progenitor cell related stress-signaling pathways.<sup>63</sup> This situation could also be associated with TTS  
469 pathophysiology. Lastly, the exact role that the ratio T:E2 plays in the development of TTS remains  
470 unclear and warrants further investigation.

471

472 *Bioinformatic extrapolation: TTS – an inflammaging disorder?*

473 The cardiovascular system, and like many other vital organs, the heart is susceptible to the effects of  
474 aging. Inflammation is a hallmark of aging, and other coexisting comorbidities linked to age-related  
475 decline, such as heart failure, cardiovascular disease, neurodegeneration, vascular dementia and  
476 Alzheimer's disease but also age-related hearing loss, age-related macular degeneration and type 2  
477 diabetes.<sup>24,69,70,71</sup> Inflammation is also associated with TTS. Recently, a novel *portemanteau* of  
478 inflammation and aging has been coined, “*inflammaging*”, which is defined as chronic, low-grade  
479 inflammation accumulated and worsening over age, presumably contributing to the pathogenesis of  
480 various age-related pathologies.<sup>70,72,73</sup> Inflammation has been described to stem from cellular  
481 senescence of the immune system, so-called immunosenescence.<sup>74</sup> Although inflammatory failure,<sup>75</sup>  
482 we set out to lay attention on the role of inflammaging in TTS. In humans and experimental animal  
483 models, several reports<sup>65,66</sup> documented a significant association between 4 systemic markers of  
484 inflammation, i.e. IL-6, IL-10, TNF $\alpha$ , INF $\gamma$ .<sup>30,38,65,66</sup>

485 Our computational analyses predicted IL-6, CCL5, CCL20, and INF $\gamma$  to interact with the studied miRs  
486 directly, while the remaining genes were shown to be involved in indirectly with these miRs. In

487 particular, possible INF $\gamma$ -signaling pathways were found to be relevant in the ontogeny of TTS (miR-  
488 15a and miR-15b). On the other hand, CCL5, CCL20, and IL-6 were predicted to play a pivotal role in  
489 inflammation (miR-21 and miR-146a). Similarly, the IL-6 contribution to the TTS lipidome was  
490 previously determined by experimental and computational analyses connecting this cytokine to the  
491 phosphatidylinositol molecule.<sup>76</sup>

492 Currently, the role of inflammaging in the ontogeny of TTS is only speculative, and further large-scale  
493 studies are needed to verify.

494

495 To conclude, the contributions of various molecular mechanisms, notably inflammaging, oxidative  
496 stress, CUMS, gender, and genetic factors shall be evaluated as possible common culprits that  
497 interrelate the pathophysiology in the heart and cardiovascular system as part of TTS. Future research  
498 using new technologies like big-data analysis of blood samples from real-life patient cohorts will  
499 probably gain better insight into underlying mechanisms of different disease phenotypes.  
500 Identification of specific molecular pathways and associated biomarkers will then allow the  
501 development of new targets for precision medicine.

502

503 **Acknowledgment:** The assistance provided by Elisabeth Wilken and Mariola Dragan was greatly  
504 appreciated. We wish to extend special thanks to Hiroshima Asa Citizens hospital team for technical  
505 support. The authors wish to show their appreciation to Dr. C. Maack, Comprehensive heart failure  
506 center Würzburg, Germany for inspiring scientific discussions. The research grant DFG FO 315/5-1 to  
507 CF is acknowledged.

508

509 **Authors' Contributions:** MS and HH performed experiments, conducted data and statistical  
510 analyses, and prepared the manuscript. SS performed computational analyses. MN, CF and SS, CB,  
511 HH prepared the manuscript. CF, CB and TT conceptualized the project and supervised the  
512 experiments. All authors contributed to manuscript writing and proofreading.

513

514 **Competing interests:**

515 The authors declare that they have no competing interests.

516

517 Abbreviations: ACS: acute coronary syndrome; AD: autoimmune disease; BBB: blood-brain barrier;  
518 b-FGF: basic fibroblast growth factor; BNP: brain natriuretic peptide; CAT: catecholamine; CCL:  
519 CC-chemokine ligand; cEND: mouse brain capillary endothelial cell line; CK-MB: creatine kinase



520 MB; CM: cardiomyocyte; CNS: Central Nervous System; CUMS: chronic unpredictable mild stress;  
521 DMEM: Dulbecco's modified Eagle's medium; ECG: electrocardiogram; EGF: epidermal growth  
522 factor; FCS: fetal calf serum; G-CSF: granulocyte colony-stimulating factor; GGI: gene-gene  
523 interaction; GMI: gene-miR interaction; GR: glucocorticoid receptor; GSK-3: Glycogen synthase  
524 kinase 3; GUSB:  $\beta$ -glucuronidase; hCMEC/D3: human brain vascular endothelial cell line; HPA:  
525 human platelet antigen; IL: interleukin ;  $\text{INF}\gamma$ : Interferon gamma; iPSC: induced pluripotent stem  
526 cells; iPSC-CMs: induced pluripotent stem cells differentiated into cardiomyocytes; Iso: isoprenaline;  
527 LV: left ventricle; MIP3A: Macrophage Inflammatory Protein 3 alpha; miR/miRNA: microRNA;  
528 MyEND: myocardial endothelial cell line; NEA: non-essential amino acids; NR3C1: nuclear receptor  
529 subfamily 3 group C member 1; NR4A1: nuclear receptor subfamily 4 group A member 1; P/S:  
530 penicillin/streptomycin; PET: positron emission tomography; RT-qPCR: real-time quantitative  
531 PCR; R3-IGF-1: recombinant analog of insulin-like growth factor; RANTES: CC-Chemokine-Ligand-  
532 5; SD: standard deviation; STEMI: ST-segment elevation myocardial infarction;  $\text{TNF}\alpha$ : tumor  
533 necrosis factor- $\alpha$ ; TTC: takotsubo cardiomyopathy; TTS: Takotsubo syndrome; VEGF: Vascular  
534 Endothelial Growth Factor; ZO-1: Zonula Occludens 1;  $\beta$ 2-AR:  $\beta$ 2-adrenergic receptor

535

## 536 **References**

- 537 1. Elgendy AY, Mahmoud AN, Elgendy IY. Takotsubo syndrome: Still a benign entity? *Int J Cardiol.*  
538 2017;247:41.
- 539 2. Ghadri JR, Wittstein IS, Prasad A, Sharkey S, Dote K, Akashi YJ, Cammann VL, Crea F, Galiuto  
540 L, Desmet W, et al. International expert consensus document on Takotsubo syndrome (Part II):  
541 Diagnostic workup, outcome, and management. *Eur Heart J.* 2018;39:2047-2062.
- 542 3. Elgendy AY, Elgendy IY, Mansoor H, Mahmoud AN. Clinical presentations and outcomes of  
543 Takotsubo syndrome in the setting of subarachnoid hemorrhage: A systematic review and meta-  
544 analysis. *Eur Heart J Acute Cardiovasc Care.* 2018;7:236-245.
- 545 4. Lyon AR, Bossone E, Schneider B, Sechtem U, Citro R, Underwood SR, Sheppard MN, Figtree  
546 GA, Parodi G, Akashi YJ, et al. Current state of knowledge on Takotsubo syndrome: a Position  
547 statement from the taskforce on Takotsubo syndrome of the Heart Failure Association of the  
548 European Society of Cardiology. *Eur J Heart Fail.* 2016;18:8-27.
- 549 5. Angelini P, Tobis JM. Is high-dose catecholamine administration in small animals an appropriate  
550 model for takotsubo syndrome? *Circ J.* 2015;79:897.

- 551 6. Messas N, Willemain R, Bilger A, Rondeau-Lutz M, Kuhnert C, Mertes PM, Morel O, Collange  
552 O. Takotsubo syndrome triggered by acute intermittent porphyria attack: An unusual stressor for  
553 catecholamine-induced cardiomyopathy. *Int J Cardiol.* 2016;207:28-30.
- 554 7. Y-Hassan S. Catecholamine levels and cardiac sympathetic hyperactivation-disruption in  
555 Takotsubo syndrome. *JACC Cardiovasc Imaging.* 2017;10:95-96.
- 556 8. Y-Hassan S, Sörensson P, Ekenbäck C, Lundin M, Agewall S, Brodin EB, Caidahl K, Cederlund  
557 K, Collste O, Daniel M, et al. Plasma catecholamine levels in the acute and subacute stages of  
558 takotsubo syndrome: Results from the Stockholm myocardial infarction with normal coronaries 2  
559 study. *Clin Cardiol.* 2021;44:1567-1574.
- 560 9. Y-Hassan S. Divergence in the results of plasma catecholamine levels in different studies on  
561 patients with takotsubo syndrome: Why? *J Cardiol.* 2016;68:89.
- 562 10. Andò G, Boretti I, Tripodi R. Stress cardiomyopathies beyond Takotsubo: does a common  
563 catecholaminergic pathophysiology fit all? *Expert Rev Cardiovasc Ther.* 2014;12:643-645.
- 564 11. El-Battrawy I, Borggrefe M, Akin I. Catecholamine in takotsubo syndrome. *Int J Cardiol.*  
565 2017;233:97.
- 566 12. Borchert T, Hübscher D, Guessoum CI, Lam TD, Ghadri JR, Schellinger IN, Tiburcy M, Liaw  
567 NY, Li Y, Haas J, et al. Catecholamine-dependent  $\beta$ -adrenergic signaling in a pluripotent stem cell  
568 model of Takotsubo cardiomyopathy. *J Am Coll Cardiol.* 2017;70:975-991.
- 569 13. Madias JE. Pathophysiology of Takotsubo syndrome: an adrenergic cardiac "chemical  
570 neuritis/myocarditis"? *Cardiovasc Revasc Med.* 2014;15:50.
- 571 14. Martins JB, Kerber RE, Marcus ML, Laughlin DL, Levy DM. Inhibition of adrenergic  
572 neurotransmission in ischaemic regions of the canine left ventricle. *Cardiovasc Res.* 1980;14:116-  
573 124.
- 574 15. Feola M, Chauvie S, Rosso GL, Biggi A, Ribichini F, Bobbio M. Reversible impairment of  
575 coronary flow reserve in takotsubo cardiomyopathy: a myocardial PET study. *J Nucl Cardiol.*  
576 2008;15:811-817.
- 577 16. Palla AR, Dande AS, Petrini J, Wasserman HS, Warshofsky MK. Pretreatment with low-dose  $\beta$ -  
578 adrenergic antagonist therapy does not affect severity of Takotsubo cardiomyopathy. *Clin Cardiol.*  
579 2012;35:478-481.
- 580 17. Paur H, Wright PT, Sikkil MB, Tranter MH, Mansfield C, O'Gara P, Stuckey DJ, Nikolaev VO,  
581 Diakonov I, Pannell L, et al. High levels of circulating epinephrine trigger apical cardiodepression  
582 in a  $\beta$ 2-adrenergic receptor/Gi-dependent manner: a new model of Takotsubo cardiomyopathy.  
583 *Circulation.* 2012;126:697-706.

- 584 18. Salemi VM, Atik E, Kairalla RA, Queiroz EL, Rosa LV, Kalil Filho R. Takotsubo  
585 cardiomyopathy triggered by  $\beta(2)$  adrenergic agonist. *J Bras Pneumol.* 2011;37:560-562.
- 586 19. Tutgun Onrat S, Dural İE, Yalım Z, Onrat E. Investigating changes in  $\beta$ -adrenergic gene  
587 expression (ADRB1 and ADRB2) in Takotsubo (stress) cardiomyopathy syndrome; a pilot study.  
588 *Mol Biol Rep.* 2021;48:7893-7900.
- 589 20. Yoneda H, Nakamura T, Shirao S, Tanaka N, Ishihara H, Suehiro E, Koizumi H, Isotani E,  
590 Suzuki M, S.A.H.P.S. Group. Multicenter prospective cohort study on volume management after  
591 subarachnoid hemorrhage: hemodynamic changes according to severity of subarachnoid  
592 hemorrhage and cerebral vasospasm. *Stroke.* 2013;44:2155-2161.
- 593 21. Bybee KA, Motiei A, Syed IS, Kara T, Prasad A, Lennon RJ, Murphy JG, Hammill SC, Rihal  
594 CS, Wright RS. Electrocardiography cannot reliably differentiate transient left ventricular apical  
595 ballooning syndrome from anterior ST-segment elevation myocardial infarction. *J Electrocardiol.*  
596 2007;40:38.e1-6.
- 597 22. Couch LS, Fiedler J, Chick G, Clayton R, Dries E, Wienecke LM, Fu L, Foure J, Pandey P,  
598 Derda AA, et al. Circulating microRNAs predispose to takotsubo syndrome following high-dose  
599 adrenaline exposure. *Cardiovasc Res.* 2022;118:1758-1770.
- 600 23. Jaguszewski M, Osipova J, Ghadri JR, Napp LC, Widera C, Franke J, Fijalkowski M, Nowak R,  
601 Fijalkowska M, Volkman I, et al. A signature of circulating microRNAs differentiates takotsubo  
602 cardiomyopathy from acute myocardial infarction. *Eur Heart J.* 2014;35:999-1006.
- 603 24. Karnati S, Guntas G, Rajendran R, Shityakov S, Höring M, Liebisch G, Kosanovic D, Ergun S,  
604 Nagai M, Förster CY. Quantitative lipidomic analysis of Takotsubo syndrome patients' serum. *Front*  
605 *Cardiovasc Med.* 2022;9:797154.
- 606 25. Thal SC, Smetak M, Hayashi K, Förster CY. Hemorrhagic cerebral insults and secondary  
607 Takotsubo syndrome: Findings in a novel in vitro model using human blood samples. *Int J Mol Sci.*  
608 2022;23:11557.
- 609 26. Ghadri JR, Wittstein IS, Prasad A, Sharkey S, Dote K, Akashi YJ, Cammann VL, Crea F, Galiuto  
610 L, Desmet W, et al. International expert consensus document on Takotsubo syndrome (Part I):  
611 Clinical characteristics, diagnostic criteria, and pathophysiology. *Eur Heart J.* 2018;39:2032-2046.
- 612 27. Förster C, Silwedel C, Golenhofen N, Burek M, Kietz S, Mankertz J, Drenckhahn D. Occludin as  
613 direct target for glucocorticoid-induced improvement of blood-brain barrier properties in a murine  
614 in vitro system. *J Physiol.* 2005;565(Pt 2):475-486.
- 615 28. Burek M, Salvador E, Förster CY. Generation of an immortalized murine brain microvascular  
616 endothelial cell line as an in vitro blood brain barrier model. *J Vis Exp.* 2012;66:e4022.

- 617 29. Golenhofen N, Ness W, Wawrousek EF, Drenckhahn D. Expression and induction of the stress  
618 protein alpha-B-crystallin in vascular endothelial cells. *Histochem Cell Biol.* 2002;117:203-209.
- 619 30. Ittner C, Burek M, Störk S, Nagai M, Förster CY. Increased catecholamine levels and  
620 inflammatory mediators alter barrier properties of brain microvascular endothelial cells in vitro.  
621 *Front Cardiovasc Med.* 2020;7:73.
- 622 31. Weksler BB, Subileau EA, Perriere N, Charneau P, Holloway K, Leveque M, Tricoire-Leignel H,  
623 Nicotra A, Bourdoulous S, Turowski P, et al. Blood-brain barrier-specific properties of a human  
624 adult brain endothelial cell line. *FASEB J* 2005;19:1872-1874.
- 625 32. Weksler B, IRomero LA, Couraud PO. The hCMEC/D3 cell line as a model of the human blood  
626 brain barrier. *Fluids Barriers CNS* 2013;10:16.
- 627 33. Haase A, Göhring G, Martin U. Generation of non-transgenic iPS cells from human cord blood  
628 CD34+ cells under animal component-free conditions. *Stem Cell Res.* 2017;21:71-73.
- 629 34. Lian X, Zhang J, Azarin SM, Zhu K, Hazeltine LB, Bao X, Hsiao C, Kamp TJ, Palecek SP.  
630 Directed cardiomyocyte differentiation from human pluripotent stem cells by modulating Wnt/ $\beta$ -  
631 catenin signaling under fully defined conditions. *Nat Protoc.* 2013;8:162-175.
- 632 35. Foinquinos A, Batkai S, Genschel C, Viereck J, Rump S, Gyöngyösi M, Traxler D, Riesenhuber  
633 M, Spannauer A, Lukovic D. Preclinical development of a miR-132 inhibitor for heart failure  
634 treatment. *Nat Commun.* 2020;11:633.
- 635 36. Chatterjee S, Hofer T, Costa A, Lu D, Batkai S, Gupta SK, Bolesani E, Zweigerdt R, Megias D,  
636 Streckfuss-Bomeke K. Telomerase therapy attenuates cardiotoxic effects of doxorubicin. *Mol Ther.*  
637 2021;29:1395-1410.
- 638 37. Tohyama S, Hattori F, Sano M, Hishiki T, Nagahata Y, Matsuura T, Hashimoto H, Suzuki T,  
639 Yamashita H, Satoh Y. Distinct metabolic flow enables large-scale purification of mouse and  
640 human pluripotent stem cell-derived cardiomyocytes. *Cell Stem Cell.* 2013;12:127-137.
- 641 38. Wilson HM, Cheyne L, Brown PAJ, Kerr K, Hannah A, Srinivasan J, Duniak N, Horgan G,  
642 Dawson DK. Characterization of the myocardial inflammatory response in acute stress-induced  
643 (Takotsubo) cardiomyopathy. *JACC Basic Transl Sci.* 2018;3:766-778.
- 644 39. Kutmon M, Kelder T, Mandaviya P, Evelo CT, Coort SL. CyTargetLinker: a cytoscape app to  
645 integrate regulatory interactions in network analysis. *PLoS One.* 2013;8:e82160.
- 646 40. Fareed MM, Ullah S, Aziz S, Johnsen TA, Shityakov S. In-silico analysis of non-synonymous  
647 single nucleotide polymorphisms in human  $\beta$ -defensin type 1 gene reveals their impact on protein-  
648 ligand binding sites. *Comput Biol Chem.* 2022;98:107669.

- 649 41. Franz M, Rodriguez H, Lopes C, Zuberi K, Montojo J, Bader GD, Morris Q. GeneMANIA  
650 update 2018. *Nucleic Acids Res.* 2018;46(W1):W60-W64.
- 651 42. Grouzmann E, Cavadas C, Grand D, Moratel M, Aubert JF, Brunner HR, Mazzolai L. Blood  
652 sampling methodology is crucial for precise measurement of plasma catecholamines concentrations  
653 in mice. *Pflugers Arch.* 2003;447:254-258.
- 654 43. Förster C, Kahles T, Kietz S, Drenckhahn D. Dexamethasone induces the expression of  
655 metalloproteinase inhibitor TIMP-1 in the murine cerebral vascular endothelial cell line cEND. *J*  
656 *Physiol.* 2007;580(Pt.3):937-949.
- 657 44. Yi X, Xu C, Huang P, Zhang L, Qing T, Li J, Wang C, Zeng T, Lu J, Han Z. 1-  
658 Trifluoromethoxyphenyl-3-(1-Propionylpiperidin-4-yl) urea protects the blood-brain barrier against  
659 ischemic injury by upregulating tight junction protein expression, mitigating apoptosis and  
660 inflammation In Vivo and In Vitro Model. *Front Pharmacol.* 2020;11:1197.
- 661 45. Davies L, Paraskevopoulou E, Sadeq M, Symeou C, Pantelidou C, Demonacos C, Krstic-  
662 Demonacos M. Regulation of glucocorticoid receptor activity by a stress responsive transcriptional  
663 cofactor. *Mol Endocrinol.* 2011;25:58-71.
- 664 46. Barcena ML, Aslam M, Pozdniakova S, Norman K, Ladilov Y. Cardiovascular inflammaging:  
665 mechanisms and translational aspects. *Cells.* 2022;11:1010.
- 666 47. Blevé A, Motta F, Durante B, Pandolfo C, Selmi C, Sica A. Immunosenescence, inflammaging,  
667 and frailty: Role of myeloid cells in age-related diseases. *Clin Rev Allergy Immunol.* 2023;64:123-  
668 144.
- 669 48. Nagai M, Kobayashi Y, Kobatake H, Dote K, Kato M, Oda N, Kunita E, Kagawa E, Yamane A,  
670 Osawa A, et al. Happy heart syndrome: a case of Takotsubo syndrome with left internal carotid  
671 artery occlusion. *Clin Auton Res.* 2020;30:347-350.
- 672 49. Osawa A, Nagai M, Dote K, Kato M, Oda N, Kunita E, Kagawa E, Yamane A, Kobatake H,  
673 Shiota H. A mid-ventricular variant of Takotsubo syndrome: was it triggered by insular cortex  
674 damage? *ESC Heart Fail.* 2021;8:3408-3412.
- 675 50. Bybee KA, Prasad A. Stress-related cardiomyopathy syndromes. *Circulation.* 2008;118:397-409.
- 676 51. Nagai M, Dote K, Kato M, Sasaki S, Oda N, Kagawa E, Nakano Y, Yamane A, Higashihara T,  
677 Miyauchi S, et al. The insular cortex and Takotsubo cardiomyopathy. *Curr Pharm Des.*  
678 2017;23:879-888.
- 679 52. Singh T, Khan H, Gamble DT, Scally C, Newby DE, Dawson D. Takotsubo syndrome:  
680 Pathophysiology, emerging concepts, and clinical implications. *Circulation.* 2022;145:1002-1019.

- 681 53. Nazir S, Lohani S, Tachamo N, Ghimire S, Poudel DR, Donato A. Takotsubo cardiomyopathy  
682 associated with epinephrine use: A systematic review and meta-analysis. *Int J Cardiol.* 2017;229:67-  
683 70.
- 684 54. Ferreira VM, Marcelino M, Piechnik SK, Marini C, Karamitsos TD, Ntusi NAB, Francis JM,  
685 Robson MD, Arnold JR, Mihai R, et al. Pheochromocytoma is characterized by catecholamine-  
686 mediated myocarditis, focal and diffuse myocardial fibrosis, and myocardial dysfunction. *J Am Coll*  
687 *Cardiol.* 2016;67:2364-2374.
- 688 55. Grippo AJ, Scotti MA. Stress and neuroinflammation. *Mod Trends Pharmacopsychiatry.*  
689 2013;28:20-32.
- 690 56. Finnell JE, Moffitt CM, Hesser LA, Harrington E, Melson MN, Wood CS, Wood SK. The  
691 contribution of the locus coeruleus-norepinephrine system in the emergence of defeat-induced  
692 inflammatory priming. *Brain Behav Immun.* 2019;79:102-113.
- 693 57. Herman JP, McKlveen JM, Ghosal S, Kopp B, Wulsin A, Makinson R, Scheimann J, Myers B.  
694 Regulation of the hypothalamic-pituitary-adrenocortical stress response. *Compr Physiol.*  
695 2016;6:603-621.
- 696 58. Bardo MT, Chandler CM, Denehy ED, Carper BA, Prendergast MA, Nolen TL. Effect of the  
697 glucocorticoid receptor antagonist PT150 on acquisition and escalation of fentanyl self-  
698 administration following early-life stress. *Exp Clin Psychopharmacol.* 2023;31:362-369.
- 699 59. Duma D, Collins JB, Chou JW, Cidlowski JA, Sexually dimorphic actions of glucocorticoids  
700 provide a link to inflammatory diseases with gender differences in prevalence. *Science signaling*  
701 2010;3:ra74.
- 702 60. González Ramírez C, Villavicencio Queijeiro A, Jiménez Morales S, Bárcenas López D, Hidalgo  
703 Miranda A, Ruiz Chow A, Tellez Cardenas L, Guardado Estrada M, et al. The NR3C1 gene  
704 expression is a potential surrogate biomarker for risk and diagnosis of posttraumatic stress disorder.  
705 *Psychiatry Res.* 2020;284:112797.
- 706 61. Sapolsky RM, Krey LC, McEwen BS. The neuroendocrinology of stress and aging: the  
707 glucocorticoid cascade hypothesis. *Endocr Rev.* 1986;7:284-301.
- 708 62. Nagai M, Förster CY, Dote K. Sex hormone-specific neuroanatomy of Takotsubo syndrome: Is  
709 the insular cortex a moderator? *Biomolecules.* 2022;12:110.
- 710 63. Walsh CP, Bovbjerg DH, Marsland AL. Glucocorticoid resistance and  $\beta$ 2-adrenergic receptor  
711 signaling pathways promote peripheral pro-inflammatory conditions associated with chronic  
712 psychological stress: A systematic review across species. *Neurosci Biobehav Rev.* 2021;128:117-  
713 135.

- 714 64. Oberbeck R. Catecholamines: physiological immunomodulators during health and illness. *Curr*  
715 *Med Chem.* 2006;13:1979-1989.
- 716 65. Scally C, Abbas H, Ahearn T, Srinivasan J, Mezincescu A, Rudd A, Spath N, Yucel-Finn A,  
717 Yucel R, Oldroyd K, et al. Myocardial and systemic inflammation in acute stress-induced  
718 (Takotsubo) cardiomyopathy. *Circulation.* 2019;139:1581-1592.
- 719 66. Santoro F, Costantino MD, Guastafierro F, Triggiani G, Ferraretti A, Tarantino N, Saguner A, Di  
720 Biase M, Brunetti ND. Inflammatory patterns in Takotsubo cardiomyopathy and acute coronary  
721 syndrome: A propensity score matched analysis. *Atherosclerosis.* 2018;274:157-161.
- 722 67. Šerstņova K, Pilmane M, Vitenberga-Verza Z, Melderis I, Gontar Ł, Kochański M, Drutowska A,  
723 Maroti G, Prieto-Simon B. Expression of anti-inflammatory markers IL-2, IL-10, TGF- $\beta$ 1,  $\beta$ DEF-2,  
724  $\beta$ DEF-3 and Cathelicidin LL37 in dairy cattle milk with different health status of the udder. *Pol J*  
725 *Vet Sci.* 2022;25:237-248.
- 726 68. Kuwabara T, Ishikawa F, Kondo M, Kakiuchi T. The Role of IL-17 and related cytokines in  
727 inflammatory autoimmune diseases. *Mediators Inflamm.* 2017;2017:3908061.
- 728 69. Blasko I, Stampfer-Kountchev M, Robatscher P, Veerhuis R, Eikelenboom P, Grubeck-  
729 Loebenstein B. How chronic inflammation can affect the brain and support the development of  
730 Alzheimer's disease in old age: the role of microglia and astrocytes. *Aging Cell.* 2004;3:169-176.
- 731 70. Ferrucci L, Fabbri E. Inflammaging: chronic inflammation in ageing, cardiovascular disease,  
732 and frailty. *Nat Rev Cardiol.* 2018;15:505-522.
- 733 71. Shityakov S, Nagai M, Ergün S, Braunger BM, Förster CY. The Protective effects of  
734 neurotrophins and microRNA in diabetic retinopathy, nephropathy and heart failure via regulating  
735 endothelial function. *Biomolecules.* 2022;12:1113.
- 736 72. Baylis D, Bartlett DB, Patel HP, Roberts HC. Understanding how we age: insights into  
737 inflammaging. *Longev Healthspan.* 2013;2:8.
- 738 73. Franceschi C, Garagnani P, Parini P, Giuliani C, Santoro A. Inflammaging: a new immune-  
739 metabolic viewpoint for age-related diseases. *Nat Rev Endocrinol.* 2018;14:576-590.
- 740 74. Müller L, Di Benedetto S, Pawelec G. The immune system and its dysregulation with aging.  
741 *Subcell Biochem.* 2019;91:21-43.
- 742 75. Adamo L, Rocha-Resende C, Prabhu SD, Mann DL. Reappraising the role of inflammation in  
743 heart failure. *Nature reviews. Cardiology* 2020;17:269-285.
- 744 76. Karnati S, Garikapati V, Liebisch G, Van Veldhoven PP, Spengler B, Schmitz G, Baumgart-Vogt  
745 E. Quantitative lipidomic analysis of mouse lung during postnatal development by electrospray  
746 ionization tandem mass spectrometry. *PLoS One.* 2018;13:e0203464.

747

## 748 **Figure legends**

749 **Figure 1.** Changes of protein expression in cEND cells after incubation with the CATs  
750 norepinephrine, epinephrine and dopamine in different concentration (c1 pharmacological  
751 concentrations)<sup>42</sup>: 150μM dopamine, 1μM epinephrine, 1μM norepinephrine; c2 postmenopausal  
752 healthy control; c3 TTS acute; c4 TTS subacute, comp. **table 1**). a) Western blots displaying xpression  
753 of the different proteins after 24h of incubation. b) densitometric evaluation. Changes of protein  
754 expression was normalized to β-actin. Data are the means (±SEM) of 3 independent experiments.  
755 Statistical significance was evaluated using Dunnett's multiple comparisons test. \*: P<0.05; \*\*\*: P <  
756 0.001; \*\*\*\*: P < 0.00001

757

758 **Figure 2.** Changes of mRNA expression in cEND cells after incubation with the CATs  
759 norepinephrine, epinephrine and dopamine in different concentrations (c1 pharmacological  
760 concentrations)<sup>42</sup>: 150μM dopamine, 1μM epinephrine, 1μM norepinephrine; c2 postmenopausal  
761 healthy control; c3 TTS acute; c4 TTS subacute, comp. Table 1). Changes of protein expression was  
762 normalized to β-actin. Data are the means (±SEM) of 3 independent experiments. Statistical  
763 significance was evaluated using Dunnett's multiple comparisons test. \*\*\*: P < 0.001; \*\*\*\*: P <  
764 0.00001

765

766 **Figure 3.** Physiological CAT concentrations did not alter cardiac stress marker NR4A1 in  
767 cardiomyocytes. A Human iPSC-derived cardiomyocytes were treated with physiological  
768 concentrations of a CAT mix as determined from acute TTS (c3 comp. Table 1) and  
769 supraphysiological concentrations of isoprenaline (Iso) for 24 h. The expression level of the cardiac  
770 stress marker nuclear receptor subfamily 4 group A member 1 (NR4A1) was analyzed by RT-qPCR,  
771 mean ± SD of three independent experiments is shown. B Human iPSC-derived cardiomyocytes were  
772 treated with physiological concentrations of CAT as determined from acute TTS (c3) and multiples  
773 (10<sup>3</sup>, 10<sup>6</sup>) of it. Expression of NR4A1 was determined by RT-qPCR, mean ± SD of triplicates is  
774 shown. Statistical significance was analyzed with one-way ANOVA with Dunnett's correction in  
775 comparison to basal, \*\* P < 0.01, \*\*\* P < 0.001, ns P > 0.05.

776

777 **Figure 4.** Changes in the protein expression of glucocorticoid receptor α in exosomes from serum  
778 from patients with various heart diseases.

779 a) Expression of glucocorticoid receptor α in the exosomes. (densitometric evaluation)



780 b) Membranes of the Western blots used in this experiment.

781 Glucocorticoid receptor  $\alpha$  protein expression was normalized to CD63. Data are the means ( $\pm$ SD) of n  
782 independent patients (postmenopausal healthy: n=3, premenopausal healthy: n=3, ACS acute: n=4,  
783 TTS acute: n=4, TTS subacute: n=8, TTS chronic: n=3). Statistical significance was evaluated using  
784 Tukey's multiple comparisons test.

785

786 **Figure 5.** Human GMI (gene-miR interaction) network generated by the CyTargetLinker algorithm  
787 human using the miRTarBase (blue) and TargetScan (red) databases. The marked nodes are depicted  
788 in yellow. The network is displayed using the yFiles organic layout.

789

790 **Figure 6.** Human GGI (gene-gene interaction) network generated by the GeneMANIA plugin for the  
791 corresponding blood markers and proinflammatory cytokines (CCL20, CCL5, EGF, IL2, IL4, IL6,  
792 IL10, IL17A, INF $\gamma$ , NR3C1, and TNF). The marked nodes are depicted in yellow. The network is  
793 displayed using the yFiles organic layout.

794

795 **Figure 7.** The merged (A) and subtracted (B) networks produced by merging GMI and GGI networks  
796 or creating a new network (8 nodes and 5 edges) from selected nodes and all of their edges. The  
797 marked nodes are depicted in yellow. The merged network is displayed using the prefuse force-  
798 directed layout.

**Table 1.** Measured concentration of different CATs (CAT) in serum of postmenopausal healthy patients and patients with TTS in pmol/l  $\pm$  SD.

\*: P < 0.05; [TTS acute] = c2, [TTS subacute] = c3 in the following sections

	postmenopausal healthy n= 3	TTS acute n=4	TTS subacute n=8
Noradrenaline	4.24 $\pm$ 1.52	3.65 $\pm$ 2.37	5.23 $\pm$ 5.69 *
Adrenaline	0.22 $\pm$ 0.11	0.13 $\pm$ 0.1	0.19 $\pm$ 0.2
Dopamine	0.18 $\pm$ 0.08	0.21 $\pm$ 0.12	0.80 $\pm$ 1.06 *

**Table 2.** Measured concentration of different cytokines and chemokines in patients sera in pg/ml  $\pm$  SD.

	<b>premenopausal healthy n = 3</b>	<b>postmenopausal healthy n= 3</b>	<b>TTS acute n = 4</b>	<b>TTS subacute n = 8</b>	<b>TTS chronic n = 3</b>	<b>ACS n = 4</b>
INF $\gamma$	2,41 $\pm$ 1,48	18,7 $\pm$ 7,18	65,6 $\pm$ 71,99	26,79 $\pm$ 32,46	19,81 $\pm$ 30,50	18,46 $\pm$ 32,03
IL-2	0,32 $\pm$ 0,33	1,49 $\pm$ 1,23	4,87 $\pm$ 8,012	2,2 $\pm$ 3,263	1,53 $\pm$ 2,243	0,37 $\pm$ 0,3641
IL-4	2,34 $\pm$ 3,38	1,59 $\pm$ 0,88	50,77 $\pm$ 8,68	2,75 $\pm$ 4,29	0,80 $\pm$ 1,10	0,70 $\pm$ 0,92
IL-6	0,34 $\pm$ 0,34	6,64 $\pm$ 15,41	38,01 $\pm$ 45,06	8,98 $\pm$ 15,13	1,45 $\pm$ 1,45	0,97 $\pm$ 0,77
IL-10	12,13 $\pm$ 19,54	30,21 $\pm$ 27,33	24,48 $\pm$ 17,52	10,55 $\pm$ 10,74	3,88 $\pm$ 6,68	3,41 $\pm$ 5,79
TNF $\alpha$	15 $\pm$ 5,67	18,53 $\pm$ 18,51	41,04 $\pm$ 47,72	25,8 $\pm$ 16,62	17,02 $\pm$ 5,262	15,6 $\pm$ 12,43
		<b>postmenopausal healthy n= 3</b>	<b>TTS acute n = 4</b>	<b>TTS subacute n = 8</b>	<b>TTS chronic n = 3</b>	<b>ACS n = 4</b>
EGF		57,05	22,19	85,14	26,14	47,85
IL-17		3,40 $\pm$ 1,70	1,91 $\pm$ 0,84	25,67 $\pm$ 52,31	3,13	3,52
MIP3A		147,3 $\pm$ 104,4	111,3 $\pm$ 68,08	249,6 $\pm$ 168,5	105,3	72,69
		<b>postmenopausal healthy n= 3</b>	<b>TTS acute n = 4</b>	<b>TTS subacute n = 8</b>		
RANTES		161542 $\pm$ 190762	69217 $\pm$ 81541	264518 $\pm$ 381721		

**Table 3:** Measured concentrations of testosterone and 17 $\beta$ -estradiol in pg/ml in the serum of patients with various heart disease. Data are the means ( $\pm$  SD) of n independent measures.

	postmenopausal healthy n= 3	TTS acute n = 4	TTS subacute n = 8	TTS chronic n = 3
Testosterone	202.5 $\pm$ 120.4	160	287.5 $\pm$ 257.5	145 $\pm$ 63.6
Estradiol	35.25 $\pm$ 54.04	5	43.13 $\pm$ 66.69	9.5 $\pm$ 6.364

**Figure 1.**

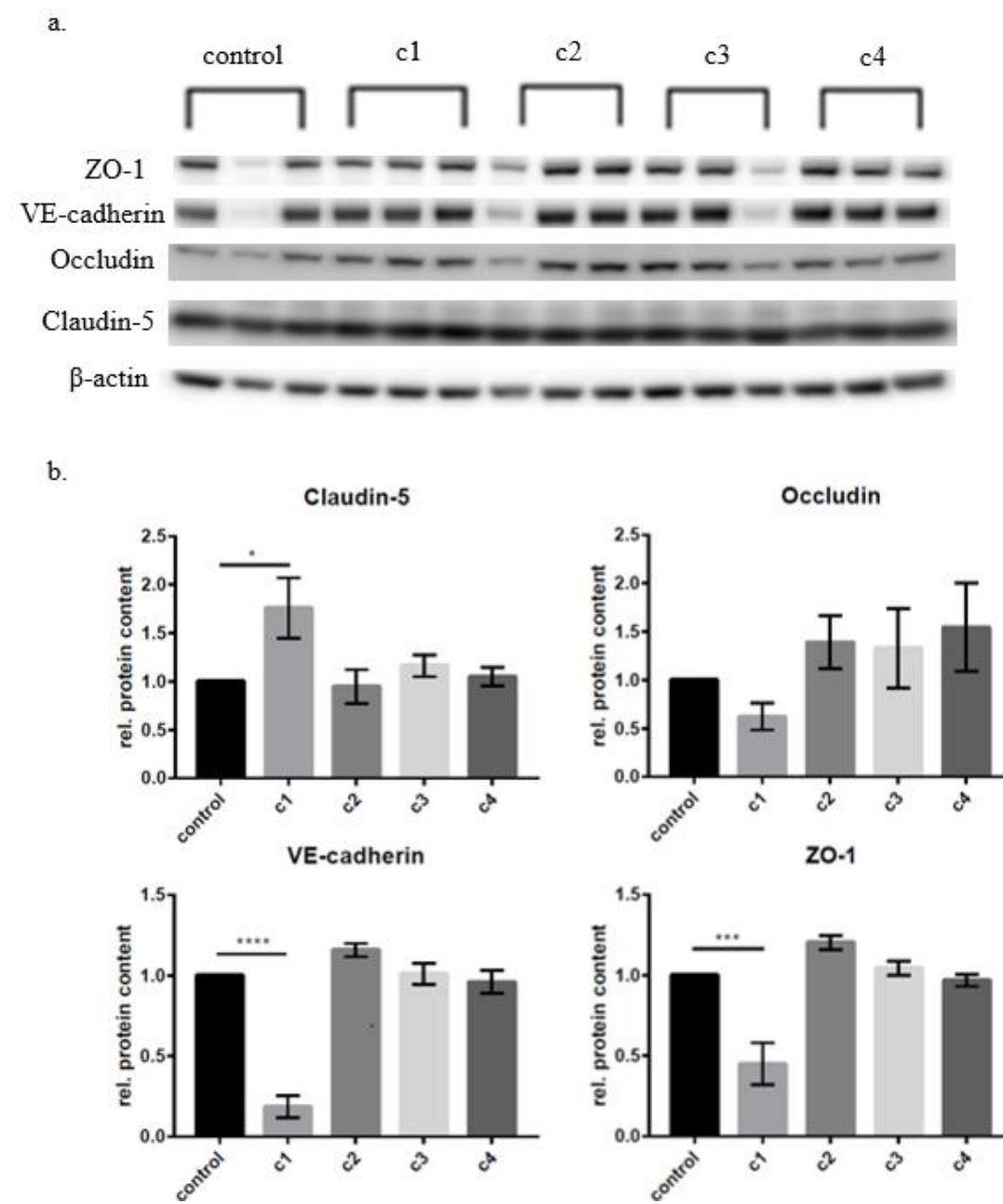


Figure 2.

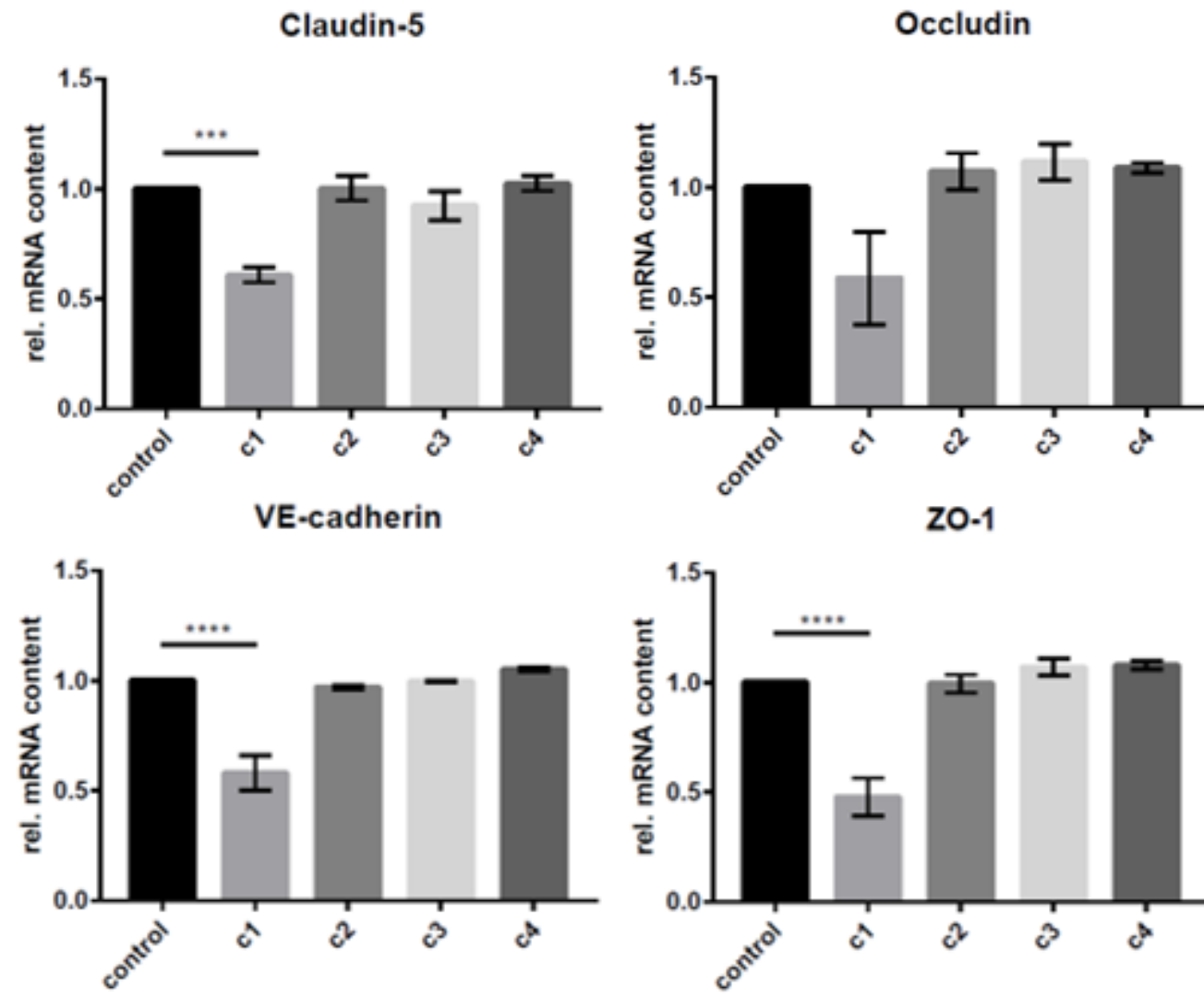


Figure 3.

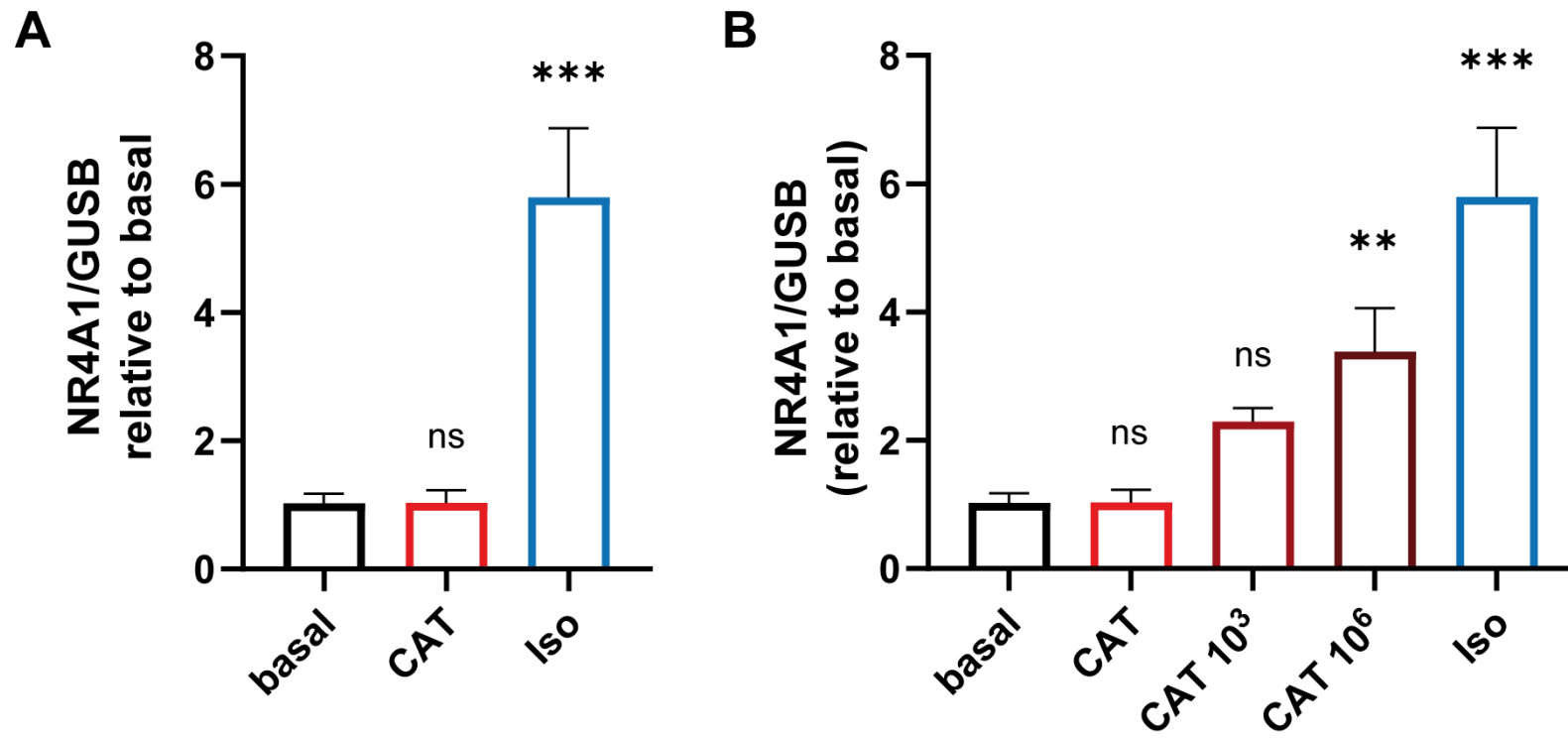


Figure 4.

### Glucocorticoid receptor $\alpha$ in exosomes

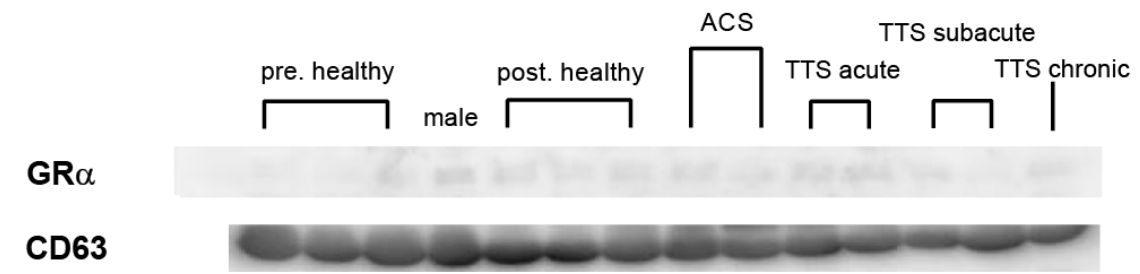
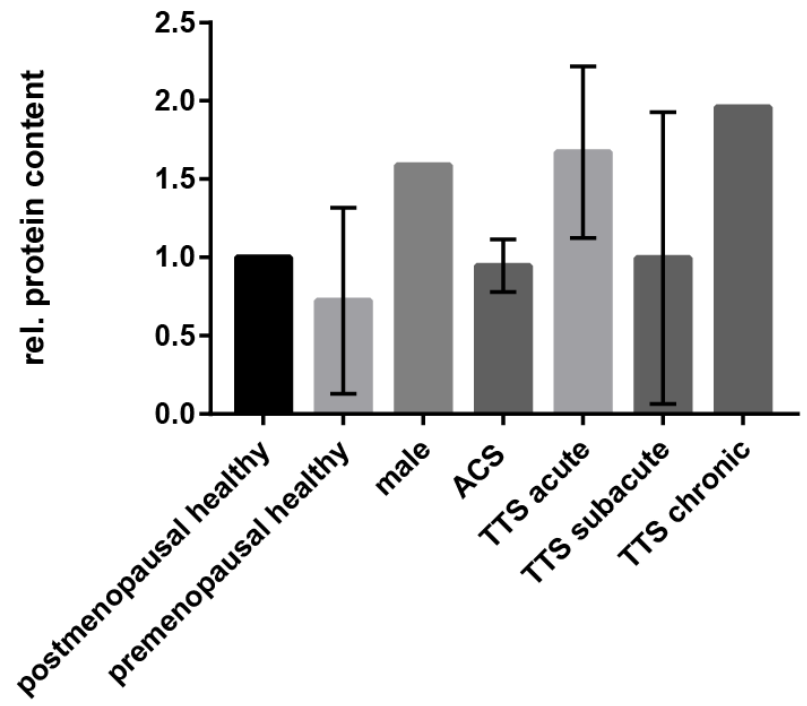




Figure 5.

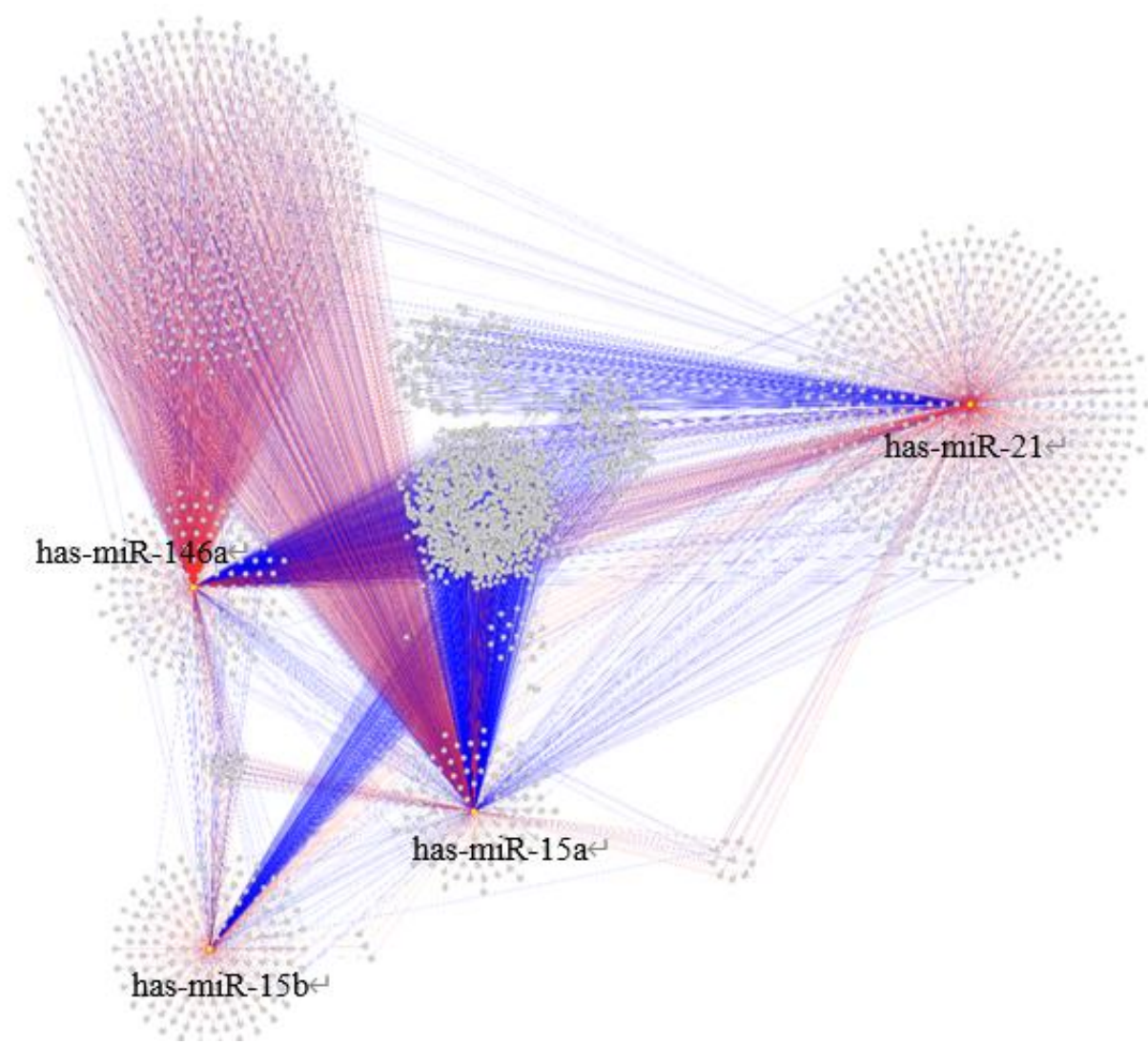


Figure 6.

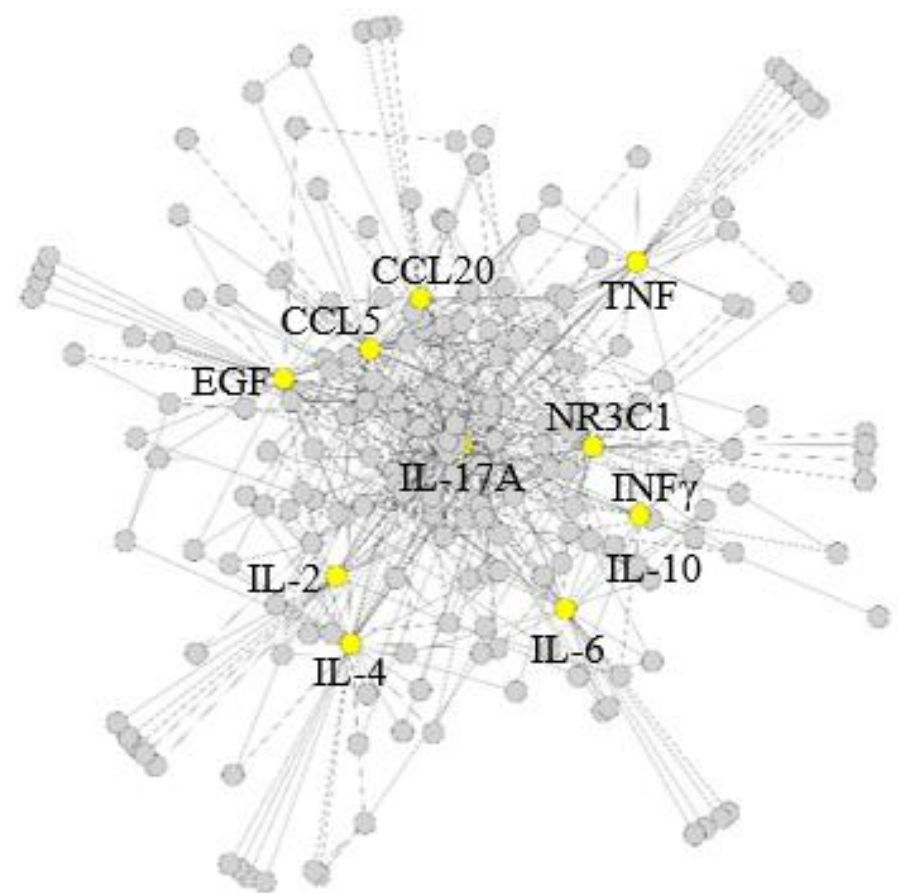


Figure 7.

