

# 1 **CARE: a novel wearable-derived feature linking** 2 **circadian amplitude to human cognitive functions**

3 Shuya Cui<sup>1,2#</sup>, Qingmin Lin<sup>3#</sup>, Yuanyuan Gui<sup>1,2</sup>, Yunting Zhang<sup>4</sup>, Hui Lu<sup>1,2</sup>, Hongyu Zhao<sup>5</sup>, Xiaolei  
4 Wang<sup>1,2\*</sup>, Xinyue Li<sup>6\*</sup>, Fan Jiang<sup>3,7,8\*</sup>

## 5 **Affiliations**

6 <sup>1</sup>State Key Laboratory of Microbial metabolism, Joint International Research Laboratory of Metabolic  
7 & Developmental Sciences, Department of Bioinformatics and Biostatistics, School of Life Sciences  
8 and Biotechnology, Shanghai Jiao Tong University, Shanghai, China.

9 <sup>2</sup>SJTU-Yale Joint Center for Biostatistics and Data Science, School of Life Science and Biotechnology,  
10 Shanghai Jiao Tong University, Shanghai, China.

11 <sup>3</sup>Developmental and Behavioral Pediatrics, Pediatric Translational Medicine Institution, Shanghai  
12 Children's Medical Center, School of Medicine, Shanghai Jiao Tong University, Shanghai, China.

13 <sup>4</sup>Developmental and Behavioral Pediatrics, Child Health Advocacy Institute, Shanghai Children's  
14 Medical Center, School of Medicine, Shanghai Jiao Tong University, Shanghai, China.

15 <sup>5</sup>Department of Biostatistics, Yale University, New Haven, CT, United States.

16 <sup>6</sup>School of Data Science, City University of Hong Kong, Hong Kong SAR, China.

17 <sup>7</sup>MOE-Shanghai Key Laboratory of Children's Environmental Health, Xinhua Hospital, School of  
18 Medicine, Shanghai Jiao Tong University, Shanghai, China.

19 <sup>8</sup>Shanghai Center for Brain Science and Brain-Inspired Technology, Shanghai, China.

20

21 <sup>#</sup>Shuya Cui and Qingmin Lin have contributed equally to this work.

22

23 **\*Corresponding Authors**

- 24 Xiaolei Wang, School of Life Science and Biotechnology, Shanghai Jiao Tong University, 800  
25 Dongchuan Rd. Shanghai 200240, China. Email: [thundawner@sjtu.edu.cn](mailto:thundawner@sjtu.edu.cn)
- 26 Xinyue Li, School of Data Science, City University of Hong Kong, 83 Tat Chee Avenue, Kowloon,  
27 Hong Kong SAR 999077, China. Email: [xinyueli@cityu.edu.hk](mailto:xinyueli@cityu.edu.hk)
- 28 Fan Jiang, Developmental and Behavioral Pediatrics, Pediatric Translational Medicine Institution,  
29 Shanghai Children's Medical Center, School of Medicine, Shanghai Jiao Tong University, 1678  
30 Dongfang Rd. Shanghai 200127, China. Email: [fanjiang@shsmu.edu.cn](mailto:fanjiang@shsmu.edu.cn)

## 31 **Abstract**

32 Circadian rhythms play a critical role in regulating physiological and behavioral processes, with  
33 amplitude being a key parameter for their characterization. However, accurately quantifying circadian  
34 amplitude in natural settings remains a challenge, as traditional melatonin methods require lab settings  
35 and are often costly and time-consuming. Wearable devices are a promising alternative as they can  
36 collect consecutive 24-h data for multiple days. The most commonly used measure of circadian  
37 amplitude from wearable device data, relative amplitude, is subject to the masking effect of behaviors  
38 and fails to leverage the rich information in high-dimensional data, as it only uses the sum of activity  
39 counts in time windows of pre-specified lengths. Therefore, in this study, we firstly proposed a pipeline  
40 to derive a novel feature to characterize circadian amplitude, named circadian activity rhythm energy  
41 (CARE), which can well address the above-mentioned challenges by decomposing raw accelerometer  
42 time series data, and then we validated the new feature CARE by assessing its correlation with  
43 melatonin amplitude (Pearson's  $r = 0.46$ ,  $P = 0.007$ ) in a dataset of 33 healthy participants. Secondly,  
44 we investigated its association with cognitive functions in two datasets: an adolescent dataset (Chinese  
45 SCHEDULE-A,  $n = 1,703$ ) and an adult dataset (the UK Biobank dataset,  $n = 92,202$ ), and we found  
46 that the CARE was significantly associated with the Global Executive Composite ( $\beta = 30.86$ ,  $P = 0.016$ )  
47 in adolescents, and reasoning ability (OR = 0.01,  $P < 0.001$ ), short-term memory (OR = 3.42,  $P <$   
48  $0.001$ ), and prospective memory (OR = 11.47,  $P < 0.001$ ) in adults. And finally, we explored the causal  
49 relationship using Mendelian randomization analysis in the adult dataset. We identified one genetic  
50 locus with 126 SNPs associated with CARE using genome-wide association study (GWAS), of which  
51 109 variants were used as instrumental variables to conduct causal analysis. The results suggested that  
52 CARE had a significant causal effect on reasoning ability ( $\beta = -59.91$ ,  $P < 0.0001$ ), short-term memory  
53 ( $\beta = 7.94$ ,  $P < 0.0001$ ), and prospective memory ( $\beta = 16.85$ ,  $P < 0.0001$ ). The findings suggested that  
54 CARE is an effective wearable-based metric of circadian amplitude with a strong genetic basis and

55 clinical significance, and its adoption can facilitate future circadian studies and potential interventions  
56 to improve circadian rhythms and cognitive functions.

## 57 **Introduction**

58 Circadian rhythms synchronized by the rotation of the Earth are 24-h self-sustained oscillations that  
59 can influence a range of physiological responses and behavioral processes, such as hormone secretion  
60 and sleep-wake cycles[1-5]. The circadian rhythms are regulated by a complex transcriptional feedback  
61 loop involving the “core circadian clock” in the suprachiasmatic nucleus (SCN) of the hypothalamus  
62 and the other peripheral clocks throughout the body[6, 7]. Rhythmic fluctuations driven by the core  
63 clock could be illustrated as a sinusoidal curve with a period of about 24 hours[8], and hence the  
64 circadian rhythms are typically described using three key parameters (**Supplementary Figure 1**):  
65 period (the length of one cycle), phase (the timing of a reference point in the cycle relative to a fixed  
66 event), and amplitude (the difference between crest and trough values of the cycle)[9]. While methods  
67 for measuring period[10, 11] and phase[12-17] are well-established and accurate in both laboratory  
68 and field studies, assessing circadian amplitude remains challenging.

69 Although there is no accepted gold standard for measuring the circadian amplitude[18], the amplitude  
70 of pineal hormone melatonin has been used as one of its reliable biomarkers, and changes in the  
71 melatonin amplitude are also observed in forced desynchrony studies [19, 20]. However, assessing the  
72 melatonin amplitude requires a melatonin profile of at least 24 hours with continuous collection of  
73 blood or saliva samples[21]. Given that the collection protocol of melatonin is costly, labor-intensive,  
74 and infeasible for large population studies and intensive follow-up cohort studies in natural settings,  
75 researchers have attempted to find alternative methods to characterize circadian amplitude using  
76 wearable sensor data[22, 23].

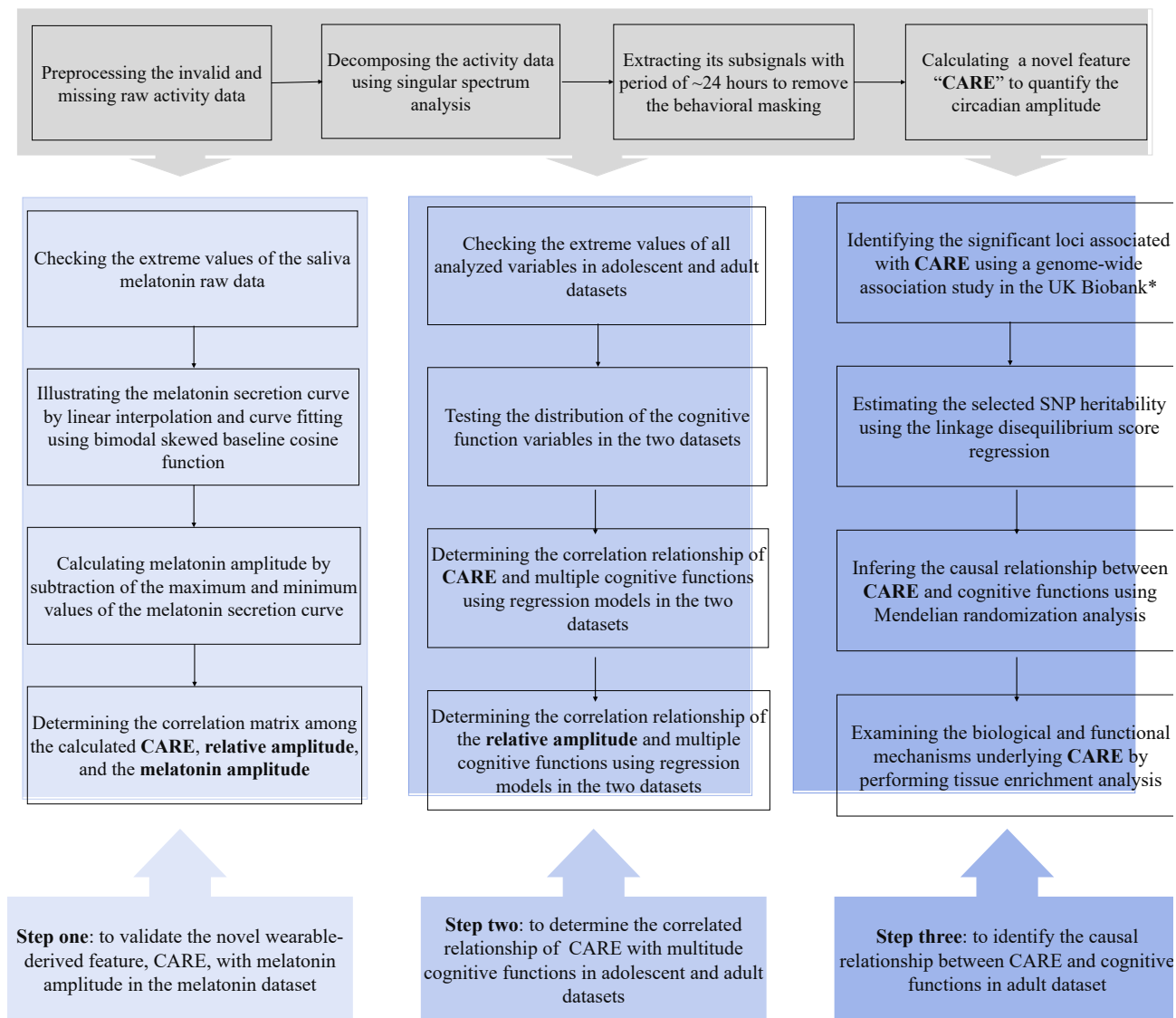
77 Wearable devices can continuously monitor the physical activity of an individual for multiple days in  
78 a natural environment, and thus can solve the challenges present in melatonin sampling. The main  
79 rationale is based on the biological knowledge that both the melatonin rhythms and rest-  
80 activity cycles are strongly influenced by the core circadian clock and hence they may share similar

81 oscillation patterns[8]. Nevertheless, accelerometer data also have some drawbacks. A major challenge  
82 is that the wearable device-derived circadian amplitude is influenced by voluntary behavioral changes  
83 in the natural environment that are not related to circadian rhythms[12, 17, 18]. More importantly, the  
84 most commonly used accelerometer-derived measure, relative amplitude, is calculated solely based on  
85 the differences between the highest and lowest activity counts[22, 24], which has lost rich information  
86 of the high-dimensional activity data. Furthermore, the direct relationship between the circadian  
87 amplitude characterized by accelerometer data and the circadian amplitude depicted by melatonin data  
88 has not been well studied. Thus, it is critical to establish and validate a sound method for extracting  
89 accurate information about circadian amplitude from high-dimensional accelerometer data to fully  
90 leverage the rich high-dimensional information without the masking effect of behaviors.

91 Changes in the amplitude of melatonin have been widely observed in age-related cognitive  
92 impairments and neurodegenerative diseases[9, 25-28]. However, few studies investigated the  
93 association between circadian amplitude and cognitive function in general population. Given that the  
94 circadian rhythms vary greatly during adolescence and many mental disorders also first appear in the  
95 adolescent stage[29, 30], and that the circadian rhythms are susceptible to heavy life and work during  
96 adulthood, it is necessary to examine the correlation between circadian amplitude and cognitive  
97 performance at these stages of life[31]. Furthermore, currently there is no evidence to support a causal  
98 relationship between circadian amplitude and cognitive performance[9, 32]. One prior study tried to  
99 study the causal relationship, but it only measured the relative amplitude and found that it was only  
100 associated with a small number of genetic variants that could not be used to investigate the causal  
101 relationship using Mendelian randomization (MR) analysis[33]. Thus, it is necessary to develop a  
102 metric of circadian amplitude to well capture circadian amplitude information with a strong genetic  
103 basis and clinical relevance, which can allow us to infer the causal relationship between circadian  
104 rhythms and cognitive functions.

105 Therefore, in this study we developed a new amplitude metric for circadian rhythms based on the  
106 accelerometer data and explored its clinical potential in two large-scale databases with different age  
107 groups. The workflow chart is shown in **Figure 1**. First, we proposed a pipeline to derive a new metric  
108 called circadian activity rhythm energy (CARE) which can remove the influence of behavioral factors  
109 using spectral analysis approaches, and then we validated the new metric CARE with the melatonin  
110 amplitude. Secondly, we applied CARE to two accelerometer datasets with 1,703 adolescents and  
111 92,202 adults, respectively, to examine the relationship between CARE and cognitive functions.  
112 Finally, we explored the causal relationship between CARE and cognitive performance through a  
113 genome-wide association study (GWAS) and MR causal analysis.

## Proposing a pipeline to calculate a novel feature called “CARE”



**Figure 1. Workflow chart of the study.**

CARE: circadian activity rhythm energy

\*We also selected the significant loci that were associated with the relative amplitude. However, only three single nucleotide polymorphisms (SNPs) were found, the number of which was too small to conduct further causal analysis.



## 115 **A novel wearable-derived measure of circadian amplitude: CARE**

116 In this paper, we developed a pipeline to extract a novel metric CARE (i.e., circadian activity rhythm  
117 energy) to accurately quantify the circadian amplitude at a large scale with low costs. CARE can extract  
118 the circadian feature via acceleration signal decomposition, circadian sub-signal extraction, and energy  
119 estimation of the sub-signals from accelerometer data (details shown in **Figure 2**).

120 The accelerometer data can be considered as a composition of sub-signals with different frequencies.  
121 In order to characterize circadian rhythms with behavioral masking effects removed, we decomposed  
122 the data of activity counts and extracted the sub-signals with a period of ~24 hours to represent the  
123 endogenous circadian oscillation. Among a list of signal decomposition approaches such as Fourier  
124 and wavelet analyses, we chose singular spectrum analysis (SSA, see a detailed description in **Figure**  
125 **2c**) in our study for its data adaptive property[34, 35] and better performance compared to other  
126 methods such as Fourier and wavelet transform (detailed results can be found in **Supplementary**  
127 **Method**). Inspired by previous decomposition analysis on accelerometer data[23, 36], we used the  
128 relative energy of the circadian sub-signal with respect to the original signal as a novel estimate of the  
129 circadian amplitude. For a discrete-time signal  $x(t)$ , energy is defined as the envelope of squared signal  
130 magnitude:

$$131 \text{Energy} = \langle x(t), x(t) \rangle = \sum_{t_0}^{t_0+T} (x(t))^2,$$

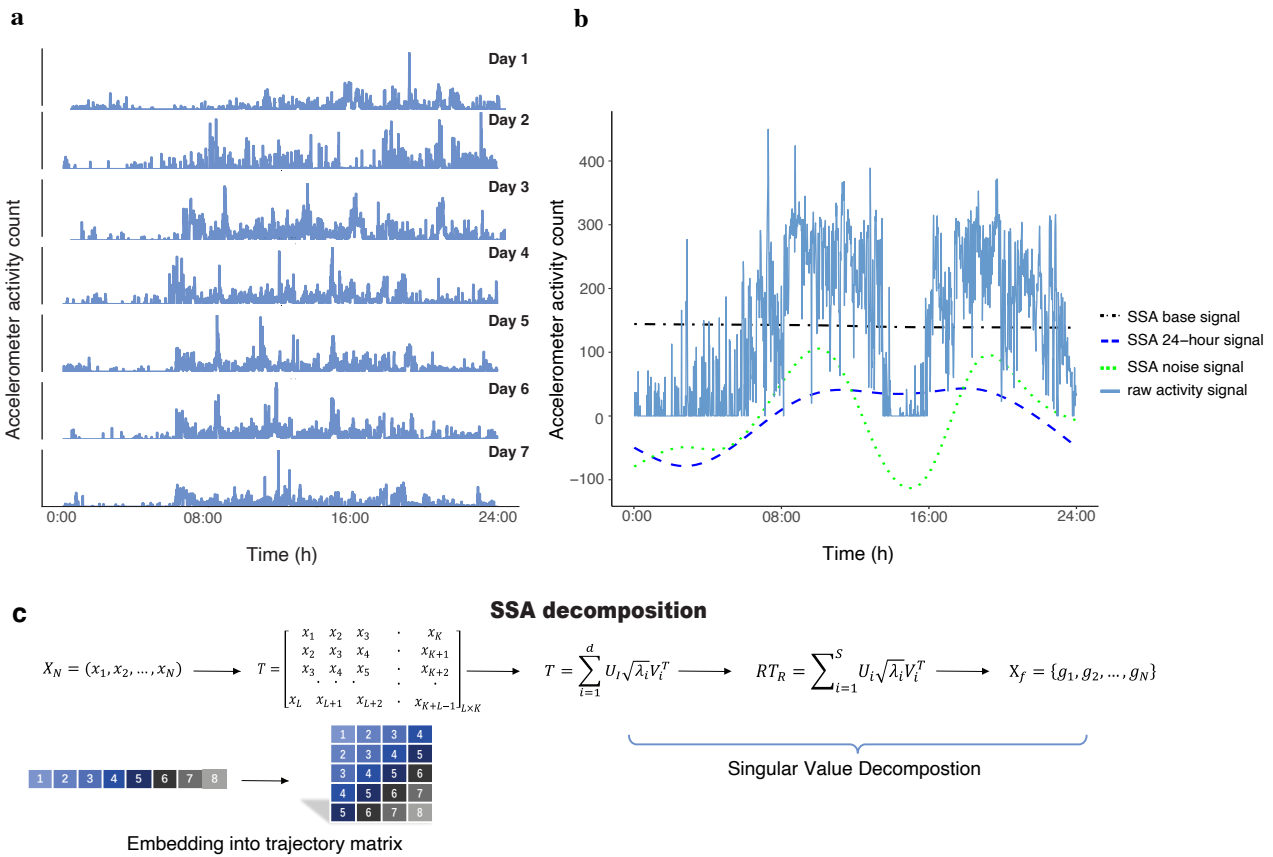
132 where  $t_0$  is the starting time point of  $x(t)$  and  $T$  is the time span of  $x(t)$ . The unit of  $x(t)$  and  
133 energy are (activity counts)/minute and (activity count)<sup>2</sup>/minute<sup>2</sup>, respectively.

134 In summary, CARE is calculated using the following equation:

$$135 \text{CARE} = \frac{\text{Energy of 24-hour signal}}{\text{Total energy of activity signal}} = \frac{\sum_{i \in I} \|X_i\|_F^2}{\|X\|_F^2},$$

136 where  $\|X_i\|_F^2$  is Frobenius norm of the  $i$ th sub-signal,  $I = \{i_2, i_3\}$  is the subset of indices  
137 corresponding to the 24-hour signal, and  $\|X\|_F^2$  is Frobenius norm of the raw activity signal. It should  
138 be noted that CARE is expressed as a ratio ranging from 0 to 1 and is unitless. Furthermore, to

139 effectively capture the dominant temporal scales and variability in the accelerometer data, and to obtain  
 140 a reliable estimate of the autocovariance matrix feature, we required a minimum input data length of  
 141 three days to calculate the CARE metric.



**Figure 2. Pipeline to derive the novel measure circadian activity rhythm energy (CARE) from accelerometer data.**

(a) Actogram to show 7 days of wrist accelerometer activity of a single participant. (b) A visual representation of the raw activity signal and the singular spectrum analysis (SSA) decomposed signals, including the base signal (i.e., the first sub-signal indicating the non-periodic trend with the largest energy among all sub-signals), the 24-hour signal (i.e., sum of the second and third sub-signals), and the behavioral noise signal (i.e., sum of the sub-signals with periods < 24 hours). We can obtain the raw activity signal by adding these three signals together. (c) The graphical display of SSA algorithm. Specifically, the activity time series  $X_N$  of length  $N$  could be decomposed using SSA as follows. First, we chose an appropriate window length  $L$  such that  $2 \leq L \leq \frac{N}{2}$ . Then,  $X_N$  was transferred into a trajectory matrix with  $K$  lagged vectors of  $X_L$  as given by  $T$ , where  $K = N - L + 1$ . The trajectory matrix  $T$  was decomposed by singular value decomposition. By grouping the eigentriples and averaging the

elements of reconstructed trajectory matrix along anti diagonals, we could get filtered time series represented by  $G_N = \{g_1, g_2, \dots, g_N\}$ .

142 **Table 1. Description of the participants and the accelerometer data.**

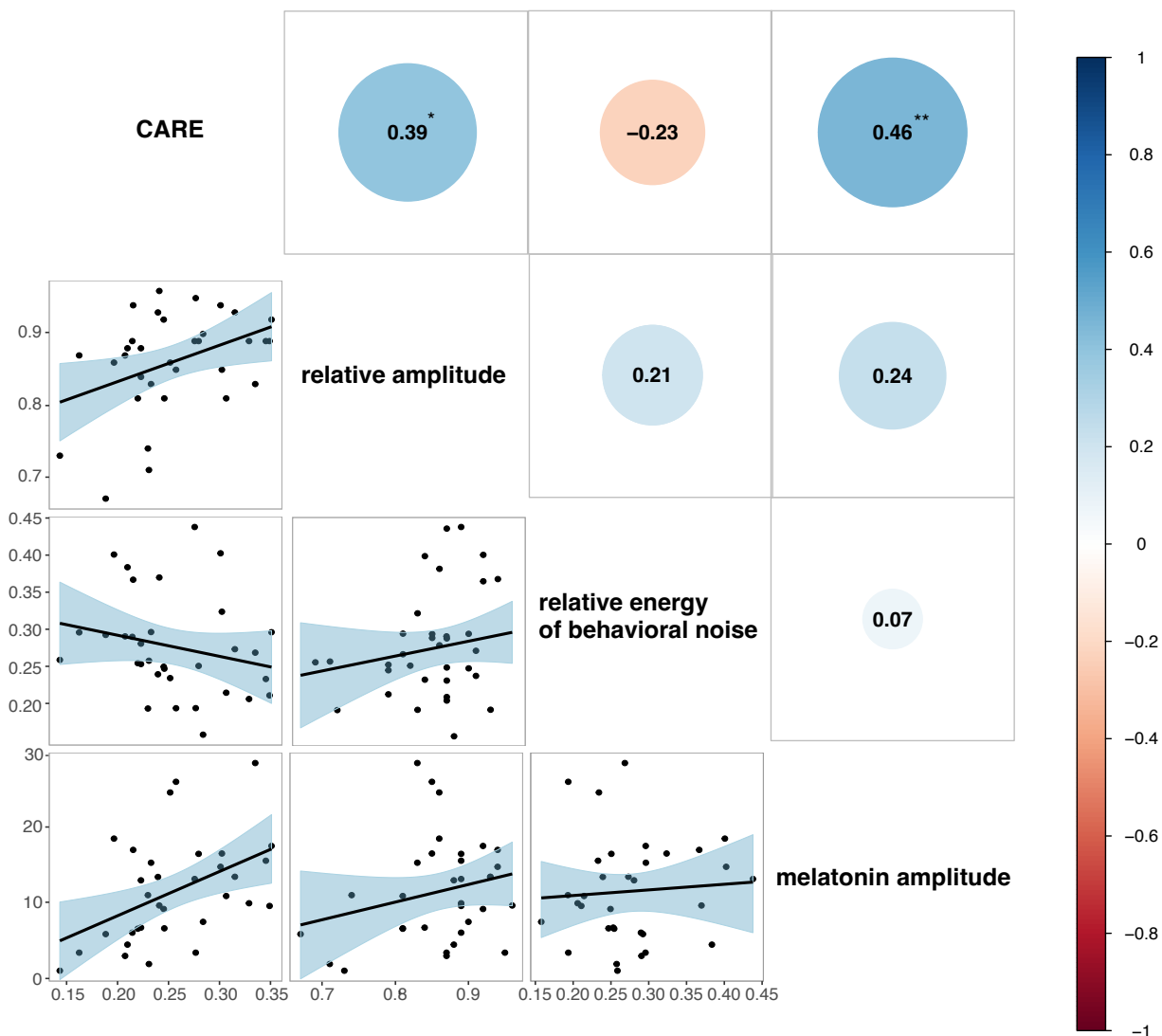
		The melatonin dataset	The adolescent dataset (Chinese SCHEDULE-A)	The adult dataset (UK Biobank)
<b>Participants</b>				
n		33	1,703	92,202
Sex	Females (%)	48.45	48.6	56.4
Age (year)	Mean (SD)	34.18 (9.26)	14.59 (1.98)	56.16 (7.82)
<b>Accelerometer data</b>				
Length (day)	Mean (SD)	7.63 (1.24)	6.62 (0.88)	6.99 (0.03)
	range	5 - 11	3 - 7	3 - 7
Sampling rate (second)		60	60	60
Accelerometer type		Micromotion logger sleep watch,	ActiGraph wGT3X-	Axivity AX3 wrist-
		Ambulatory	BT, Pensacola, FL,	worn triaxial
		Monitoring Inc.,	USA	accelerometer,
		Ardsley, NY		Newcastle University, UK

143 Note. All the accelerometer data used in our study were activity count data.

144 **Validate CARE with melatonin amplitude**

145 We validated the novel feature CARE by examining its association with the melatonin amplitude in a  
 146 dataset of 33 healthy participants aged 23 - 61 years, where accelerometer activity and melatonin were  
 147 simultaneously collected (**Table 1**). Among the 33 participants, mean CARE was 0.26 ( $SD = 0.05$ ;  
 148 range 0.14 - 0.35), mean relative amplitude was 0.86 ( $SD = 0.07$ ; range 0.67 - 0.96), and mean  
 149 melatonin amplitude was 11.44 pg/ml ( $SD = 6.81$ ; range 1.02 - 28.27). The correlation analysis

150 revealed that the melatonin amplitude was only significantly associated with CARE (Pearson's  $r =$   
151  $0.46$ ,  $P = 0.007$ ; **Figure 3a**). On the other hand, we observed no significant association between  
152 melatonin amplitude and relative amplitude (Pearson's  $r = 0.24$ ,  $P = 0.19$ ; **Figure 3**) or relative energy  
153 of behavioral noise signals (Pearson's  $r = 0.07$ ,  $P = 0.68$ ; **Figure 3**). Moreover, our study found no  
154 significant association between age and sex with melatonin amplitude ( $P > 0.05$ ; **Supplementary**  
155 **Table 1**). We also found that CARE accounted for 21.16% of the total variance of melatonin amplitude,  
156 whereas age and sex accounted for only 4.3%, and 0.03% of the variance, respectively  
157 (**Supplementary Table 1**).



158

159 **Figure 3. Correlations between wearable-derived CARE, relative amplitude, and relative energy**  
 160 **of behavioral noise with melatonin amplitude.**

161 CARE: circadian activity rhythm energy.

162 Scatter plots between CARE, relative amplitude, and relative energy of behavioral noise with melatonin amplitude in  
 163 the melatonin study. The black lines indicate the linear regression fits, and the shaded areas represent the confidence  
 164 intervals of the fitted mean values. The correlation coefficients annotated with an asterisk (\*) indicate that the  
 165 correlation is significant at  $P < 0.05$  level, while two asterisks (\*\*) indicate that the correlation is significant at  $P <$   
 166 0.01 level.

## 167 **Correlation of CARE and cognitive outcomes in adolescents and adults**

168 We applied CARE to two population-based accelerometer datasets with a total of 1,703 adolescents  
169 aged 10-19 years from China and 92,202 adults aged 39-70 years from UK. Characteristics of the  
170 participants and accelerometers data are presented in **Table 1**, and other analyzed variables are  
171 described in **Supplementary Tables 2 and 3**.

172 Mean CARE values were 0.10 (0.04) and 0.13 (0.04) for adolescents and adults, respectively. And  
173 mean relative amplitude values were 0.91 (0.05) and 0.87 (0.06) for adolescents and adults,  
174 respectively. Our results showed that CARE was significantly associated with relative amplitude in  
175 both populations (Pearson's  $r = 0.41$ ,  $P < 0.0001$  for the adolescents; Pearson's correlation  $r: 0.35$ ,  $P <$   
176  $0.0001$  for the adults). Furthermore, we confirmed the internal consistency of CARE by analyzing the  
177 intra-subject versus inter-subject variance. The results showed that the intra-subject variability of  
178 CARE values was not significant in both adolescents ( $P = 0.18$ ) and adults ( $P = 0.25$ ), while the inter-  
179 subject variability was significant in both datasets ( $P < 0.0001$ , **Supplementary Table 4**). Moreover,  
180 we found significant between-group differences in CARE values among individuals with psychiatric  
181 disorders, such as bipolar affective disorder, schizophrenia, depression, and those in the control group  
182 ( $P = 0.02$ , **Supplementary Table 5**).

183 In the adolescent dataset, we used the Behavior Rating Inventory of Executive Function (BRIEF)[38]  
184 to assess adolescent cognitive functions in nature settings, which includes three summary indices,  
185 namely the Behavioral Regulation Index (BRI), the Metacognition Index (MI), and the Global  
186 Executive Composite (GEC). After adjusting confounding factors, the results showed that CARE had  
187 significant associations with GEC scores ( $P = 0.013$ ), but it was not associated with BRI ( $P = 0.10$ )  
188 and MI scores ( $P = 0.03$ ), (see detailed results in **Table 2**). However, no significant association was  
189 found between relative amplitude with any of the cognitive scores ( $P > 0.017$ ) (see detailed results in  
190 **Supplementary Table 6**).

192 **Table 2. Associations between CARE and cognitive functions in adolescents.**

Cognitive Scores	n	Coefficient	SE	P Value
<b>BRI</b>	1,703	20.68	12.38	0.10
<b>MI</b>	1,703	25.27	11.76	0.03
<b>GEC</b>	1,703	30.86	12.35	0.013

193 BRI = Behavioral Regulation Index, GEC = Global Executive Composite, MI = Metacognition Index, SE = standard error.  
194 Median regression models were used with adjusting age, sex, parental education level, family income, and primary  
195 caregiver. The significance level was set at  $P < 0.017$ .

196 In the adult dataset, cognitive assessment was conducted via touchscreen cognitive tests, and four main  
197 tasks were considered, i.e., reaction time test assessing processing/reaction speed domain, fluid  
198 intelligence test assessing reasoning ability domain, pairs matching test assessing short-term memory  
199 domain, and prospective memory test assessing prospective memory. We found that CARE showed  
200 significant correlations with reasoning ability, short-term and prospective memory ( $P < 0.0001$ ), but  
201 correlations were not significant for processing/reaction speed ( $P = 0.31$ ). Details regarding the  
202 associations between CARE and cognitive scores are represented in **Table 3**. Though we found that  
203 relative amplitude was correlated with processing/reaction speed ( $P < 0.0001$ ), it was not associated  
204 with reasoning ability, short-term and prospective memory ( $P > 0.013$ ). Details regarding the  
205 associations between relative amplitude and cognitive scores are represented in **Supplementary Table**  
206 **7**.

207 **Table 3. Associations between CARE and cognitive functions in adults.**

Cognitive Scores	n	Coefficient / OR	SE	P Value
<b>Processing/reaction speed</b>	91,830	-8.37	8.22	0.31
<b>Reasoning ability</b>	34,656	0.01	0.003	<0.0001
<b>Short-term memory</b>	77,439	3.42	0.62	<0.0001
<b>Prospective memory</b>	34,173	11.47	6.86	<0.0001

208 OR = odds ratio, SE = standard error. Models were adjusted for age, sex, ethnicity, Townsend score, and the season when  
209 the participant started wearing the accelerometer. Linear regression for processing/reaction speed, ordinal logistic  
210 regression for reasoning ability and short-term memory scores, and logistic regression for prospective memory were  
211 employed. The significance level was set at  $P < 0.013$ .

## 212 **Causal effects of CARE on cognitive functions**

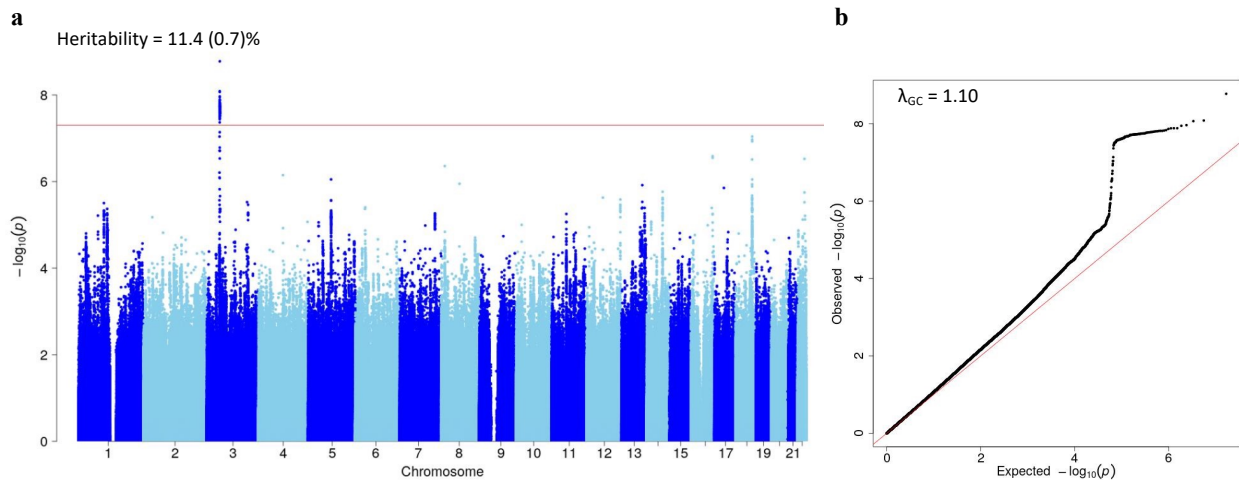
213 To determine the causal relationship between CARE and cognitive functions, we conducted a GWAS  
214 study of CARE followed with MR analysis in the adult sample, which contains filtered genetic data  
215 for 85,361 people.

216 *1) Genomic locus associated with CARE*

217 One genomic locus on chromosomes 3 was found to correlate with CARE at the genome-wide  
218 significance level of  $5 \times 10^{-8}$ , including 126 single nucleotide polymorphisms (SNPs) (**Figure 4**, lead  
219 variant in **Supplementary Table 8** and all significant associations in **Supplementary Data 1**). The  
220 quantile-quantile (QQ) plot checking for population stratification indicated proper control of  
221 population structure, with a slight deviation in test statistics compared to the null (**Figure 4**,  $\lambda_{GC} = 1.10$ ).  
222 The heritability estimate for CARE was  $>11\%$  ( $h^2_{SNP} = 0.114$ ,  $se = 0.007$ ). This locus was reported to  
223 be associated with common executive functions[39], intelligence[40] and educational attainment[41]  
224 in the previous studies. However, only three SNPs were found to be associated with relative amplitude,  
225 which was too few for causal inference using MR methods (**Supplementary Figure 2** and  
226 **Supplementary Table 9**).

227





228

**Figure 4. Manhattan and QQ plots for CARE in genome-wide association study in the adult sample (n = 85,361).**

(a) The Manhattan plot shows association test ( $-\log_{10} P$  value on the y-axis against physical autosomal location on the x-axis). The red line represents the genome-wide significant locus ( $P < 5 \times 10^{-8}$ ). Heritability estimates were calculated using LDSC tool. (b) The QQ plot identifies a slight inflation ( $\lambda_{GC} = 1.10$ ) in the test statistic.

229 *2) Causal relationship between CARE and cognitive phenotypes*

230 To investigate whether CARE has a causal effect on cognitive outcomes, we performed MR analyses  
231 on significant correlation pairs, i.e., CARE with reasoning ability, short-term and prospective memory  
232 (Table 3). Of the 126 CARE-related SNPs, a total of 109 variants were used as instrumental variables  
233 to conduct the MR analyses. Using the weighted median method, we found that the genetically  
234 predicted CARE had a significant causal effect on reasoning ability ( $\beta = -59.91, P < 0.0001$ ), short-  
235 term ( $\beta = 7.94, P < 0.0001$ ) and prospective memory ( $\beta = 16.85, P < 0.0001$ ). Sensitivity analyses  
236 including inverse variance weighted (IVW)[42], MR-Lasso[43], the mode-based estimate (MBE)[44],  
237 and constrained maximum likelihood-based method (MR-cML)[45] all showed consistent results with  
238 weighted median methods (Supplementary Table 10).

239 *3) Single-tissue and cross-tissue transcriptome-wide association analysis*

240 Single-tissue enrichment analysis identified 120 unique genes associated with CARE ( $P < 2.9 \times 10^{-6}$ )  
241 in 44 GTEx tissues (Supplementary Data 2). Among them, APEH was associated with CARE in 18

242 tissues and was found to correlate with blood protein measurements in previous GWAS studies[46].  
243 TRAIIP was detected in 11 tissues and was reported to be associated with intelligence[39], mental  
244 disorders[47, 48], insomnia[49], blood protein measurement[50, 51], and body mass index[52].  
245 MST1R was associated with CARE in 9 tissues and is related to physical activity measurements[53],  
246 intelligence[54], and body mass index[55]. These correlation results also emphasized shared genetic  
247 architecture between the central nervous system, the metabolic system, and the circadian system.  
248 Furthermore, a total of 15 significant genes were detected using joint-tissue tests for gene-CARE  
249 associations across tissues ( $P < 2.9 \times 10^{-6}$ ; **Supplementary Table 11**).

## 250 **Discussion**

251 In the present study, we proposed a pipeline to derive a novel wearable-based feature (i.e., CARE) to  
252 characterize circadian amplitude and applied it to identify the association between circadian amplitude  
253 and cognitive functions in two large-scale datasets with different age groups. We found a significant  
254 association between CARE and melatonin amplitude (a reliable measure of circadian amplitude), while  
255 relative amplitude (a commonly used amplitude of the activity) was not. Findings that CARE was  
256 associated with a multitude of cognitive outcomes in adolescents and adults demonstrated that CARE  
257 could be a clinically meaningful circadian feature derived from objective accelerometer records.  
258 Furthermore, we identified one genetic locus with 126 SNPs associated with CARE, and provided the  
259 first direct evidence of the causal relations between CARE with reasoning and memory abilities in an  
260 adult sample.

261 Our study found a moderate correlation between the new feature CARE and melatonin amplitude in  
262 general population under natural settings. The use of CARE can effectively eliminate the influence of  
263 behavioral noise on the assessment of circadian amplitude using the accelerometer data, as supported  
264 by the lack of significant association between behavioral noise signals and melatonin amplitude.  
265 Notably, we calculated CARE values using accelerometer activity data of at least 3 days, making it a

266 summary statistic across multiple days for each individual. This computation approach enhances the  
267 stability of CARE values and reduces the intra-subject variability. Nonetheless, it is important to note  
268 that the CARE values may be impacted by data obtained from various accelerometer devices, which  
269 could potentially affect their comparability. Furthermore, the range of CARE values observed in the  
270 melatonin dataset is relatively narrow, which is likely due to the limited range of observed melatonin  
271 amplitude, as the maximum melatonin amplitude can be up to 84 pg/ml in healthy adults[56]. Therefore,  
272 it would be beneficial to investigate whether a broader range of melatonin amplitude leads to a wider  
273 range of CARE values in the future research.

274 The findings that age and sex were not significantly associated with melatonin amplitude may  
275 contradict with previous research that melatonin levels typically decrease with age starting from middle  
276 age and that women tend to have higher melatonin amplitude than men [57-59]. This might be due to  
277 the limited number of middle-aged and elderly participants (age > 40) and the limited sample size in  
278 our dataset. Future research shall recruit larger samples, especially from the elderly adults, to further  
279 examine age and sex differences.

280 Our study demonstrated that CARE and relative amplitude may assess different aspects of circadian  
281 rhythmicity. Although they are all derived from accelerometer data, CARE was designed to reflect the  
282 strength of the core circadian clock located in the SCN, and relative amplitude is more of a metric to  
283 quantify the highest/lowest disruption of rest-activity rhythms. The identification of a sufficient  
284 number of CARE-associated variants can enable us to perform causal inference through MR analysis,  
285 which is not possible with relative amplitude. In addition, the SNP heritability of CARE accounted for  
286 a higher proportion of population variance than relative amplitude in the adult sample (UK Biobank  
287 cohort). These results further supported CARE as a clinically meaningful feature. Future research is  
288 still warranted to systematically compare and assess the relative contribution and relevance of CARE  
289 and relative amplitude, particularly in the context of health and disease.

290 Our study observed a differential association between CARE and cognitive functions in adolescent and  
291 adult groups. In adults, we observed a correlation between CARE and the problem-solving component  
292 of cognitive functions, specifically reasoning and memory domains. However, in adolescents, this  
293 association was not present. This discrepancy may indicate the existence of a compensatory mechanism  
294 in adolescents that counterbalances the impact of circadian rhythm impairments on problem-solving  
295 ability. More research is needed to confirm our hypothesis in the future.

296 In the present study, we demonstrated a causal effect of CARE on reasoning and memory abilities in  
297 adults, and we also provided evidence for the shared genetic architecture of circadian rhythms with  
298 neurological function[9]. The genome-wide significant locus was found to be associated with common  
299 executive functions[39], intelligence[40], and educational attainment[41]. Furthermore, results from  
300 the single-tissue and cross-tissue transcriptome-wide association analyses further confirmed the  
301 CARE's strong biological basis and highlighted the important role of circadian rhythms on the central  
302 nervous system, which is in line with previous findings from the other UK Biobank studies[60].

303 In conclusion, the new feature CARE that we derived from accelerometer data, is closely related to  
304 the melatonin amplitude in natural settings, and also serves as a meaningful metric for a wide range  
305 of cognitive functions in general adolescents and adults. Future studies with large sample size and  
306 different protocols such as forced desynchrony settings and shift work should be conducted to  
307 validate the new feature CARE and to confirm its causality on other health-related outcomes.

## 308 **Methods**

### 309 **The melatonin dataset**

#### 310 *Participants*

311 This dataset recruited 33 healthy adults (17 male and 16 female) aged 23-61 years in January 2023.  
312 Prior to enrollment, all participants underwent screening to exclude the use of sleep aid supplements  
313 (e.g., melatonin), a history of shift work, and sleep disorders. The participants were asked to complete

314 a range of demographic, lifestyle, and health related questionnaires, to wear an accelerometer, and to  
315 collect saliva samples with 5 times. This protocol was approved by the Shanghai Children's Medical  
316 Center's Human Ethics Committee (SCMCIRB-K2021070-2) and Shanghai Jiao Tong University  
317 School of Medicine (SJTUPN-202301). All participants provided digital written informed consent.

### 318 *Accelerometer data collection and processing*

319 The participants were asked to wear an accelerometer (Micromotion logger sleep watch, Ambulatory  
320 Monitoring Inc., Ardsley, NY) on their non-dominant wrist for nine consecutive days, meanwhile, they  
321 were required to keep a diary recording bedtime, rise time, and off-wrist period on each day. They were  
322 informed not to remove the device unless engaged in special activities (e.g., showering), and to re-wear  
323 it immediately after the activities were finished. We defined the daytime period as 08:00-20:00 and the  
324 nighttime period as 20:00-08:00. According to the diary recording for the off-wrist periods, we defined  
325 a criterion that at least 15 min of consecutive zero counts were identified nonwear periods in period  
326 08:00-23:00, and at least 3 hours of consecutive zero counts were identified nonwear periods in the  
327 remaining period. We also considered that the valid data on each day should meet at least 20 hours (i.e.,  
328 more than 83% of the whole 24 hours) of wearing time without more than three consecutive hours of  
329 missing data. If less than 3 hours of missing data existed, we used the mean of the corresponding time  
330 points on the other days to fill the gaps. After checking, if there were still missing values (often due to  
331 the missing data being at a fixed time every day, so it could not be filled using the mean value), the  
332 average of physical activity counts around the missing area (i.e., about 6 epoch) was used to fill. After  
333 preprocessing the invalid and missing raw data, each individual included should have at least three  
334 valid days of data, and the activity counts with 1-min resolution were used to calculate the new feature  
335 CARE using the above-proposed novel pipeline and to compute the commonly used feature relative  
336 amplitude by the difference between the average activity level of an individual during the most active  
337 consecutive ten hours (M10) and the least active consecutive five hours of the day (L5).

338 
$$\text{Relative amplitude} = \frac{M_{10} - L_5}{M_{10} + L_5}$$

339 *Saliva melatonin data collection and processing*

340 We used the Salivettes<sup>®</sup> (Sarstedt, Nümbrecht, Germany) to collect saliva. On the eighth and ninth day  
341 of wearing the accelerometer, the participants were asked to collect 2 ml saliva samples 5 times (i.e.,  
342 9 am, 15 pm, 21 pm, 3 am, and 9 am of the next day; time window  $\pm 1$  hour) across 24 hours, of which  
343 the saliva sample at 21 pm and 3 am were required to be collected under the dark light (light intensity  
344  $< 30$  lux) if the participants usually went to sleep at that time. The participants were informed to follow  
345 their usual sleep schedule and don't intake caffeine, alcohol, and fatty foods on the sampling day, keep  
346 their mouth clean (e.g., food intake restriction) in the 30 min prior to sampling, and do not swallow  
347 saliva while chewing the swab. They were also informed to store each sample immediately in the  
348 freezer layer of the refrigerator after collection, and to transfer all of the samples to the laboratory using  
349 ice packs. Subsequently, after centrifugation at 4°C for 10 min at 3000 rpm, the supernatant saliva  
350 samples were collected into 2 ml EP tube and stored at -80°C until use.

351 Saliva melatonin was measured by liquid chromatography-tandem mass spectrometry, which can  
352 quantify the range of the melatonin from 1 to 1000 pg/ml, and only use small volume of the saliva  
353 samples (100  $\mu$ l). Detailed measurement was similar to the quantification of melatonin in human  
354 milk[61]. For more information, please contact the corresponding author. After quantification of saliva  
355 melatonin levels, we checked the extreme values, and we excluded the values less than 2 pg/ml which  
356 collected at 3 am (time window  $\pm 1$  hour). And then melatonin profiles were obtained by linear  
357 interpolation and curve fitting using skewed baseline cosine function (SBCF) (**Supplementary Figure**  
358 **3**), a robust model for melatonin estimation when there were limited time points in the collection of  
359 melatonin[62].

360 **The adolescent dataset**

361 *Participants*

362 The Shanghai Children's Health, Education, and Lifestyle Evaluation-Adolescent (SCHEDULE-A) is  
363 a population-based cross-sectional study designed to investigate the physical and mental health of  
364 adolescents (10-19 years). A total of 1,703 adolescents from a subsample of SCHEDULE-A (Shanghai  
365 city, China) were utilized for this study. Two data acquisition schemes, an online questionnaire survey,  
366 and offline accelerometer wearing, were performed simultaneously to collect adolescents' socio-  
367 demographic information, lifestyle behaviors, physical and mental health outcomes. Details of the  
368 protocol can be found in one prior published study[63]. This study was approved by the Human Ethics  
369 Committee of the Shanghai Children's Medical Center according to the Declaration of Helsinki  
370 (SCMCIRB-K2018103). Written informed consent was obtained from all participants.

#### 371 *Accelerometer data collection and processing*

372 Participants were asked to wear an accelerometer (ActiGraph wGT3X-BT, Pensacola, FL, USA) on  
373 the non-dominant wrist for seven consecutive days. The other requirements including device wearing  
374 and diary recording were similar to the melatonin dataset. Using the same way to preprocess the raw  
375 data, and then CARE and relative amplitude were calculated.

#### 376 *Measurement of cognitive functions*

377 The Chinese version of the BRIEF was used to assess adolescent cognitive functions in nature  
378 settings[64]. The BRIEF has 86 items, each one is rated on a three-point Likert-type scale, including  
379 never, sometimes and often, and parents of the participants were asked to select the most suitable  
380 answer for their adolescents in the past 6 months. After cleaning the raw data[63], three indexes were  
381 calculated: 1) the BRI, represents the ability to modulate behavioral and emotional responses  
382 appropriately; 2) the MI, evaluates the ability to solve problems, including initiating activities and tasks,  
383 holding information in mind for purpose of completing a task, anticipating future events, monitoring  
384 the effects of one's behaviors on others and keeping track of daily assignments; 3) the GEC, is a  
385 composite measure of all the cognitive functions mentioned above. Values of BRIEF scores reflect the

386 extent of impairment of the corresponding cognitive functions, and higher scores indicate greater  
387 impairments.

### 388 *Covariates*

389 One of the participants' parents was asked to complete a questionnaire about their social-demographic  
390 characteristics, i.e., adolescents' age, sex, primary caregiver (parents/grandparents or others), family  
391 income (< 50,000 CNY/year, 50,000 to 150,000 CNY/year,  $\geq$  150,000 CNY/year), and parental  
392 education level (below high school, high school, college and above).

### 393 **The adult dataset**

#### 394 *Participants*

395 The UK Biobank cohort is a general longitudinal study with over 500,000 participants recruited from  
396 the United Kingdom (UK). In the current study, we selected 92,202 participants who provided qualified  
397 accelerometer data for at least three days after data preprocessing and who had complete records in age  
398 and sex. The demographic, lifestyle, health, mood, cognitive, and physical conditions of the  
399 participants were collected at 22 assessment centers. The UK Biobank has received ethical approval  
400 from the North-West Research Ethics Committee (11/NW/03820) and all participants gave written  
401 informed consent.

#### 402 *Accelerometer data collection and processing*

403 Participants were asked to wear an accelerometer (Activity AX3 wrist-worn triaxial accelerometer,  
404 Newcastle University, UK) for seven consecutive days. The accelerometer raw data were preprocessed  
405 similarly to the above melatonin and adolescent datasets. Participants were also excluded if their data  
406 were identified by UK Biobank as poorly calibrated ( $n = 11$ ) or unreliable (unexpectedly small or large  
407 size,  $n = 4,692$ ). Participants who provided accelerometer data for less than 72 hours or who did not  
408 provide data for all one-hour periods within the 24-h cycle ( $n = 4,465$ ) were also excluded from further  
409 analyses. Similarly, after cleaning the raw data, CARE and relative amplitude were calculated.

#### 410 *Measurement of cognitive functions*



411 Four tests were used to assess adult processing/reaction speed, reasoning ability, short-term memory,  
412 and prospective memory. 1) The processing/reaction speed was assessed by the reaction time test.  
413 During the test, participants were shown 12 pairs of images of cards for 12 rounds, and they pressed  
414 the button on the touchscreen when the two cards are the same. The processing/reaction speed was then  
415 calculated by the mean reaction time of the correct matches over the last 7 rounds after the exclusion  
416 of times below 50ms and above 2,000ms. Due to negative skewness in reaction time, we performed  
417 the analyses using both the raw and log-transformed data form. Since the results were equivalent, only  
418 the results of raw reaction time were reported for ease of interpretation. 2) Reasoning ability was  
419 measured by the fluid intelligence tests. Participants were asked to answer 13 fluid intelligence  
420 questions within 2 minutes and the total number of correct answers to these questions was recorded as  
421 the fluid intelligence score. 3) Short-term memory was assessed by the pairs matching tests.  
422 Participants were asked to memorize as many pairs of cards as possible within the time the cards were  
423 shown. Then the cards were turned face down and the participants were asked to match the cards. The  
424 test was conducted in two rounds, with 3 and 6 pairs of cards presented in each round. The outcome  
425 measure used in this study was the number of incorrect matches in rounds, as suggested by the UK  
426 Biobank website. 4) Prospective memory was assessed by the prospective memory test. Before the  
427 other touchscreen cognitive tests, the participant was shown the message "At the end of the games we  
428 will show you four colored shapes and ask you to touch the Blue Square. However, to test your memory,  
429 we want you to actually touch the Orange Circle instead". The results were divided into 3 categories,  
430 0 for instruction not recalled, 1 for correct recall on the first attempt, and 2 for correct recall on the  
431 second attempt, respectively. The outcome measure used in this study was the number of attempts  
432 before getting the correct recall.

#### 433 *Covariates*

434 Participants provided data on demographic characteristics including age, sex, ethnicity, educational  
435 attainment, and lifestyle at the baseline assessment. Townsend's social deprivation score is defined

436 based on the postcode of residence, with negative scores reflecting relatively greater affluence. The  
437 season when the participant started to wear the accelerometer was derived from raw accelerometer  
438 records, i.e., spring for March to May, summer for June to August, autumn for September to November,  
439 and winter for December to February according to the UK Meteorological Office definitions.

#### 440 **Statistical analysis**

441 The characteristics of the three datasets were described by mean (*SD* and range), and frequency (%)  
442 for continuous and categorical variables, respectively. To address our purpose, the following three  
443 steps were conducted after calculating the new feature CARE according to the above-proposed pipeline  
444 (**Figure 1**).

445 **Step one:** to validate the novel wearable-derived feature CARE

446 We firstly calculated the new feature CARE using the above-proposed pipeline from accelerometer  
447 data. Secondly, using the same pipeline, we also derived the relative energy of behavioral noise signals  
448 (sub-signals with a period less than 24 hours) from accelerometer activity data:

$$449 \quad \text{Relative energy of behavioral signals} = \frac{\text{energy of behavioral noise signal}}{\text{total energy of activity signal}} = \frac{\sum_{u \in U} \|X_u\|_F^2}{\|X\|_F^2},$$

450 where  $\|X_u\|_F^2$  is Frobenius norm of the  $u$ th sub-signal,  $U = \{u_4, u_5, \dots, u_d\}$  is the subset of indices  
451 corresponding to the behavioral noise signal (sub-signals with a period  $< 24$ h), and  $\|X\|_F^2$  is Frobenius  
452 norm of the raw activity signal. Thirdly, we obtained the melatonin profiles by linear interpolation and  
453 curve fitting using skewed baseline cosine function (SBCF), a robust model for melatonin estimation  
454 when there were limited time points[62]; Fourthly, the melatonin amplitude was measured by  
455 subtraction of the maximum and minimum values of the melatonin secretion curve; and finally, we  
456 conducted Pearson correlation analyses between CARE, relative amplitude, and the relative energy of  
457 behavioral high-frequency signals with melatonin amplitude. Additionally, we examined the  
458 associations between CARE and melatonin amplitude while adjusting for age and sex.

459 **Step two:** to determine the correlation relationship of CARE with multitude of cognitive functions in  
460 adolescents and adults

461 Prior to performing the association analysis, we evaluated the internal stability of CARE values through  
462 two distinct analyses. Firstly, we randomly selected a subset of 1,000 individuals each from the  
463 adolescent and adult datasets who had at least six days of accelerometer data. We then calculated the  
464 CARE values using the first three days of recordings (repetition 1) and the fourth to sixth days of  
465 recordings (repetition 2), respectively. An Analysis of Variance (ANOVA) was then performed to  
466 compare the intra-subject and inter-subject variability of CARE values. Secondly, we conducted  
467 another ANOVA to explore the within-group and between group variability of CARE values in bipolar  
468 affective disorder (n = 147), schizophrenia (n = 42), depression (n = 2,252), and control groups (n =  
469 36,315) in the adult dataset. Specifically, the control group comprised individuals who did not currently  
470 have the above-mentioned psychiatric diseases, did not have a history of mental disease, did not take  
471 psychiatric medication, did not receive any professional help for mental distress, and had not suffered  
472 from mental distress.

473 We then performed different regression models to determine the relationship of CARE with multitude  
474 of cognitive functions in two datasets. Specifically, in adolescents, because all the three BRIEF indices  
475 (i.e., BRI, MI, and GEC) were skewed distributed, median regression analysis was used with  
476 adjustment for the demographic variables (i.e., age, sex, parental education level, family income, and  
477 primary caregiver); and in adults, linear regression model was performed to assess the associations  
478 between CARE and processing/reaction speed, ordinal logistic regression model was employed to  
479 investigate the associations between CARE and count outcome variables (reasoning ability, and short-  
480 term memory), while logistic regression model was conducted to test the correlation between CARE  
481 and the binary cognitive measures of prospective memory. Similarly, models were adjusted for age,  
482 sex, ethnicity, Townsend score, and the season when the participant started wearing the accelerometer.  
483 To maximize sample sizes, available-case analyses were employed, and sample sizes for each model

484 were reported. Moreover, the analyses mentioned above were also performed on relative amplitude for  
485 the purpose of comparison.

486 All analyses were performed in R 4.1.2, and the threshold for significance was set at  $P < 0.05/3 = 0.017$   
487 (3 cognitive outcomes) and  $P < 0.05/4 = 0.013$  (4 cognitive outcomes) to correct for multiple testing  
488 according to Bonferroni's approach in adolescent and adult dataset analyses, respectively.

489 **Step three:** to identify the causal relationship between CARE and cognitive functions in the adult  
490 dataset.

#### 491 *1) Identification of loci associated with CARE*

492 Before the genetic analysis, we excluded SNPs with Minor Allele Frequency  $< 0.1\%$ , Hardy-Weinberg  
493 equilibrium  $< 1 \times 10^{-10}$ , and imputation quality score (UKBB information score)  $< 0.8$ . Furthermore,  
494 for related individuals (first cousins or closer), one individual from each pair of related individuals was  
495 randomly selected for inclusion in the analysis, and non-white individuals were also removed from the  
496 analysis. After data filtering, a total of 85,361 samples remained for further analysis. To identify  
497 genetic variants associated with CARE, we performed a GWAS analysis using PLINK[65]. Linear  
498 regression models were adjusted by age, sex, and the first 20 genetic principal components, and the  
499 genome-wide significance level was set at  $5 \times 10^{-8}$ . To estimate SNP heritability ( $h^2_{\text{SNP}}$ ), the Linkage  
500 Disequilibrium Score Regression (LDSR) was applied to the GWAS summary statistics of CARE with  
501 the LDSC tool[66, 67]. Furthermore, we identified one significant locus that was associated with the  
502 relative amplitude, however, only three SNPs were found, which was just too little that we couldn't  
503 conduct the further causal analysis.

#### 504 *2) Causal relationship between CARE and cognitive functions*

505 To investigate the causal relationship between CARE and cognitive functions, we conducted MR  
506 analyses using the R package "MendelianRandomization"[68]. In order to exclude instrumental  
507 variables with weak power, we pruned CARE-related SNPs and finally determined 109 SNPs as  
508 instruments. To avoid inflation of associations caused by the sample overlap, genetic effect sizes for

509 reasoning ability, short-term and prospective memory were obtained from GWAS analysis after  
510 excluding all individuals used in the GWAS analysis of CARE (n = 360,885). In the MR analyses, the  
511 weighted median approach[69] was used as the main analysis due to its robustness to pleiotropy [70].  
512 Furthermore, we applied inverse variance weighted (IVW)[42], MR-Lasso[43], the mode-based  
513 estimate (MBE)[44], and constrained maximum likelihood-based method (MR-cML)[45] to perform  
514 sensitivity analyses. The beta coefficients were reported and Bonferroni-adjusted *P* values less than  
515 0.017 (3 outcomes) were considered evidence of associations.

### 516 3) *Single-tissue and Cross-tissue Transcriptome-wide Association Analysis*

517 In addition, we examined the biological and functional mechanisms underlying CARE by performing  
518 transcriptome-wide analysis in 44 tissue types in GTEx v7. We identified single-tissue and cross-tissue  
519 gene-CARE associations based on GWAS summary statistics and expression quantitative trait loci  
520 (eQTL) information, using UTMOST[71]. The Bonferroni-corrected threshold for significance in  
521 UTMOST is  $2.9 \times 10^{-6}$  for 17,290 genes.

### 522 **Data Availability**

523 The melatonin and adolescent datasets used in the current study are not publicly available but are  
524 available from the corresponding author (Fan Jiang) on reasonable request. The UK Biobank data that  
525 support the findings of this study are available from the UK Biobank project but restrictions apply to  
526 the availability of these data, which were used under license for the current study (application number:  
527 57947), and so are not publicly available.

### 528 **Code Availability**

529 Codes for calculating CARE were publicly available at <https://github.com/ShuyaCui/CARE>.

### 530 **References**

- 531 1. Foster, R.G. and L. Kreitzman, *The rhythms of life: what your body clock means to you!* Exp  
532 Physiol, 2014. **99**(4): p. 599-606.
- 533 2. Dibner, C. and U. Schibler, *Circadian timing of metabolism in animal models and humans.*  
534 Journal of Internal Medicine, 2015. **277**(5): p. 513-527.

- 535 3. Zimmet, P., et al., *The Circadian Syndrome: is the Metabolic Syndrome and much more!*  
536 *Journal of Internal Medicine*, 2019. **286**(2): p. 181-191.
- 537 4. Chowdhury, D., et al., *Understanding Quantitative Circadian Regulations Are Crucial*  
538 *Towards Advancing Chronotherapy*. *Cells*, 2019. **8**(8): p. 883.
- 539 5. Refinetti, R., *Circadian rhythmicity of body temperature and metabolism*. *Temperature*, 2020.  
540 **7**(4): p. 321-362.
- 541 6. Welsh, D.K., J.S. Takahashi, and S.A. Kay, *Suprachiasmatic Nucleus: Cell Autonomy and*  
542 *Network Properties*. *Annual Review of Physiology*, 2010. **72**(1): p. 551-577.
- 543 7. Buhr, E.D. and J.S. Takahashi, *Molecular components of the Mammalian circadian clock*.  
544 *Handb Exp Pharmacol*, 2013(217): p. 3-27.
- 545 8. Schibler, U., et al., *Clock-Talk: Interactions between Central and Peripheral Circadian*  
546 *Oscillators in Mammals*. *Cold Spring Harbor Symposia on Quantitative Biology*, 2015. **80**: p.  
547 223-232.
- 548 9. Leng, Y., et al., *Association between circadian rhythms and neurodegenerative diseases*. *The*  
549 *Lancet Neurology*, 2019. **18**(3): p. 307-318.
- 550 10. Costa, M.J., et al., *Inference on periodicity of circadian time series*. *Biostatistics*, 2013. **14**(4):  
551 p. 792-806.
- 552 11. Li, X., et al., *Circadian Rhythm Analysis Using Wearable Device Data: Novel Penalized*  
553 *Machine Learning Approach*. *Journal of Medical Internet Research*, 2021. **23**(10): p. e18403.
- 554 12. Kolodyazhniy, V., et al., *Estimation of Human Circadian Phase via a Multi-Channel*  
555 *Ambulatory Monitoring System and a Multiple Regression Model*. *Journal of Biological*  
556 *Rhythms*, 2011. **26**(1): p. 55-67.
- 557 13. Kolodyazhniy, V., et al., *An improved method for estimating human circadian phase derived*  
558 *from multichannel ambulatory monitoring and artificial neural networks*. *Chronobiol Int*,  
559 2012. **29**(8): p. 1078-97.
- 560 14. Stone, J.E., et al., *Generalizability of A Neural Network Model for Circadian Phase*  
561 *Prediction in Real-World Conditions*. *Sci Rep*, 2019. **9**(1): p. 11001.
- 562 15. Brown, L.S., et al., *A classification approach to estimating human circadian phase under*  
563 *circadian alignment from actigraphy and photometry data*. *Journal of Pineal Research*, 2021.  
564 **71**(1).
- 565 16. Cheng, P., et al., *Predicting circadian misalignment with wearable technology: validation of*  
566 *wrist-worn actigraphy and photometry in night shift workers*. *Sleep*, 2021. **44**(2).
- 567 17. Stone, J.E., et al., *Computational approaches for individual circadian phase prediction in*  
568 *field settings*. *Current Opinion in Systems Biology*, 2020. **22**: p. 39-51.
- 569 18. Dijk, D.J. and J.F. Duffy, *Novel Approaches for Assessing Circadian Rhythmicity in Humans:*  
570 *A Review*. *J Biol Rhythms*, 2020. **35**(5): p. 421-438.
- 571 19. Jewett, M.E., R.E. Kronauer, and C.A. Czeisler, *Light-induced suppression of endogenous*  
572 *circadian amplitude in humans*. *Nature*, 1991. **350**(6313): p. 59-62.
- 573 20. Dijk, D.-J., et al., *Amplitude Reduction and Phase Shifts of Melatonin, Cortisol and Other*  
574 *Circadian Rhythms after a Gradual Advance of Sleep and Light Exposure in Humans*. *PLOS*  
575 *ONE*, 2012. **7**(2): p. e30037.

- 576 21. Benloucif, S., et al., *Measuring Melatonin in Humans*. Journal of Clinical Sleep Medicine,  
577 2008. **04**(01): p. 66-69.
- 578 22. Witting, W., et al., *Alterations in the circadian rest-activity rhythm in aging and Alzheimer's*  
579 *disease*. Biological Psychiatry, 1990. **27**(6): p. 563-572.
- 580 23. Leise, T.L., *Wavelet analysis of circadian and ultradian behavioral rhythms*. Journal of  
581 Circadian Rhythms, 2013. **11**(0): p. 5.
- 582 24. Ancoli-Israel, S., et al., *The role of actigraphy in the study of sleep and circadian rhythms*.  
583 Sleep, 2003. **26**(3): p. 342-92.
- 584 25. Heyde, I., J.-T. Kiehn, and H. Oster, *Mutual influence of sleep and circadian clocks on*  
585 *physiology and cognition*. Free Radical Biology and Medicine, 2018. **119**: p. 8-16.
- 586 26. Taillard, J., et al., *Sleep timing, chronotype and social jetlag: Impact on cognitive abilities*  
587 *and psychiatric disorders*. Biochemical Pharmacology, 2021. **191**: p. 114438.
- 588 27. Wang, M., et al., *Altered Biological Rhythm and Alzheimer's Disease: A Bidirectional*  
589 *Relationship*. CURRENT ALZHEIMER RESEARCH, 2021. **18**(9): p. 667-675.
- 590 28. Tranah, G.J., et al., *Circadian activity rhythms and risk of incident dementia and mild*  
591 *cognitive impairment in older women*. Annals of Neurology, 2011. **70**(5): p. 722-732.
- 592 29. Kessler, R.C., et al., *Lifetime Prevalence and Age-of-Onset Distributions of DSM-IV*  
593 *Disorders in the National Comorbidity Survey Replication*. Archives of General Psychiatry,  
594 2005. **62**(6): p. 593-602.
- 595 30. Hagenauer, M.H. and T.M. Lee, *The neuroendocrine control of the circadian system:*  
596 *adolescent chronotype*. Front Neuroendocrinol, 2012. **33**(3): p. 211-29.
- 597 31. Doherty, A., *Circadian rhythms and mental health: wearable sensing at scale*. The Lancet  
598 Psychiatry, 2018. **5**(6): p. 457-458.
- 599 32. Lyall, L.M., et al., *Association of disrupted circadian rhythmicity with mood disorders,*  
600 *subjective wellbeing, and cognitive function: a cross-sectional study of 91 105 participants*  
601 *from the UK Biobank*. Lancet Psychiatry, 2018. **5**(6): p. 507-514.
- 602 33. Ferguson, A., et al., *Genome-Wide Association Study of Circadian Rhythmicity in 71,500 UK*  
603 *Biobank Participants and Polygenic Association with Mood Instability*. EBioMedicine, 2018.  
604 **35**: p. 279-287.
- 605 34. Hassani, H., *Singular Spectrum Analysis: Methodology and Comparison*. University Library  
606 of Munich, Germany, MPRA Paper, 2007. **5**.
- 607 35. Hassani, H., et al., *On the Separability between Signal and Noise in Singular Spectrum*  
608 *Analysis*. Fluctuation and Noise Letters, 2012. **11**(02).
- 609 36. Leise, T.L., et al., *Wavelet Meets Actogram*. Journal of Biological Rhythms, 2013. **28**(1): p.  
610 62-68.
- 611 37. Doherty, A., et al. *Large Scale Population Assessment of Physical Activity Using Wrist Worn*  
612 *Accelerometers: The UK Biobank Study*. PloS one, 2017. **12**, e0169649 DOI:  
613 10.1371/journal.pone.0169649.
- 614 38. Gioia, G.A., P.K. Isquith, and R.M. Roth, *Behavior Rating Inventory for Executive Function,*  
615 *in Encyclopedia of Clinical Neuropsychology*, J.S. Kreutzer, J. DeLuca, and B. Caplan,  
616 Editors. 2018, Springer International Publishing: Cham. p. 532-538.

- 617 39. Hatoum, A.S., et al., *Genome-wide Association Study Shows That Executive Functioning Is*  
618 *Influenced by GABAergic Processes and Is a Neurocognitive Genetic Correlate of*  
619 *Psychiatric Disorders*. *Biol Psychiatry*, 2023. **93**(1): p. 59-70.
- 620 40. Hill, W.D., et al., *Genome-wide analysis identifies molecular systems and 149 genetic loci*  
621 *associated with income*. *Nat Commun*, 2019. **10**(1): p. 5741.
- 622 41. Davies, G., et al., *Genome-wide association study of cognitive functions and educational*  
623 *attainment in UK Biobank (N=112 151)*. *Mol Psychiatry*, 2016. **21**(6): p. 758-67.
- 624 42. Burgess, S., A. Butterworth, and S.G. Thompson, *Mendelian Randomization Analysis With*  
625 *Multiple Genetic Variants Using Summarized Data*. *GENETIC EPIDEMIOLOGY*, 2013.  
626 **37**(7): p. 658-665.
- 627 43. Rees, J.M.B., et al., *Robust methods in Mendelian randomization via penalization of*  
628 *heterogeneous causal estimates*. *PLoS One*, 2019. **14**(9): p. e0222362.
- 629 44. Hartwig, F.P., G. Davey Smith, and J. Bowden, *Robust inference in summary data Mendelian*  
630 *randomization via the zero modal pleiotropy assumption*. *Int J Epidemiol*, 2017. **46**(6): p.  
631 1985-1998.
- 632 45. Xue, H., X. Shen, and W. Pan, *Constrained maximum likelihood-based Mendelian*  
633 *randomization robust to both correlated and uncorrelated pleiotropic effects*. *Am J Hum*  
634 *Genet*, 2021. **108**(7): p. 1251-1269.
- 635 46. Barton, A.R., et al., *Whole-exome imputation within UK Biobank powers rare coding variant*  
636 *association and fine-mapping analyses*. *Nat Genet*, 2021. **53**(8): p. 1260-1269.
- 637 47. Adewuyi, E.O., et al., *A large-scale genome-wide cross-trait analysis reveals shared genetic*  
638 *architecture between Alzheimer's disease and gastrointestinal tract disorders*. *Commun Biol*,  
639 2022. **5**(1): p. 691.
- 640 48. Rao, S., et al., *Genetic Relationships between Attention-Deficit/Hyperactivity Disorder,*  
641 *Autism Spectrum Disorder, and Intelligence*. *Neuropsychobiology*, 2022. **81**(6): p. 484-496.
- 642 49. Jansen, P.R., et al., *Genome-wide analysis of insomnia in 1,331,010 individuals identifies new*  
643 *risk loci and functional pathways*. *Nat Genet*, 2019. **51**(3): p. 394-403.
- 644 50. Ligthart, S., et al., *Genome Analyses of >200,000 Individuals Identify 58 Loci for Chronic*  
645 *Inflammation and Highlight Pathways that Link Inflammation and Complex Disorders*. *Am J*  
646 *Hum Genet*, 2018. **103**(5): p. 691-706.
- 647 51. Oskarsson, G.R., et al., *Predicted loss and gain of function mutations in ACO1 are associated*  
648 *with erythropoiesis*. *Commun Biol*, 2020. **3**(1): p. 189.
- 649 52. Zhu, Z., et al., *Shared genetic and experimental links between obesity-related traits and*  
650 *asthma subtypes in UK Biobank*. *J Allergy Clin Immunol*, 2020. **145**(2): p. 537-549.
- 651 53. Wang, Z., et al., *Genome-wide association analyses of physical activity and sedentary*  
652 *behavior provide insights into underlying mechanisms and roles in disease prevention*. *Nat*  
653 *Genet*, 2022. **54**(9): p. 1332-1344.
- 654 54. Savage, J.E., et al., *Genome-wide association meta-analysis in 269,867 individuals identifies*  
655 *new genetic and functional links to intelligence*. *Nat Genet*, 2018. **50**(7): p. 912-919.
- 656 55. Pulit, S.L., et al., *Meta-analysis of genome-wide association studies for body fat distribution*  
657 *in 694 649 individuals of European ancestry*. *Hum Mol Genet*, 2019. **28**(1): p. 166-174.



- 658 56. Burgess, H.J. and L.F. Fogg, *Individual Differences in the Amount and Timing of Salivary*  
659 *Melatonin Secretion*. PLoS ONE, 2008. **3**(8): p. e3055.
- 660 57. Zhou, J.-N., et al., *Alterations in the circadian rhythm of salivary melatonin begin during*  
661 *middle-age*. Journal of Pineal Research, 2003. **34**(1): p. 11-16.
- 662 58. Hardeland, R., et al., *Melatonin—A pleiotropic, orchestrating regulator molecule*. Progress in  
663 *Neurobiology*, 2011. **93**(3): p. 350-384.
- 664 59. Cain, S.W., et al., *Sex differences in phase angle of entrainment and melatonin amplitude in*  
665 *humans*. Journal of biological rhythms, 2010. **25**(4): p. 288-296.
- 666 60. Li, X. and H. Zhao, *Automated feature extraction from population wearable device data*  
667 *identified novel loci associated with sleep and circadian rhythms*. PLOS Genetics, 2020.  
668 **16**(10): p. e1009089.
- 669 61. Jin, W., et al., *High-throughput quantitation of trace level melatonin in human milk by on-line*  
670 *enrichment liquid chromatography-tandem mass spectrometry*. Anal Chim Acta, 2021. **1176**:  
671 p. 338764.
- 672 62. Van Someren, E.J.W. and E. Nagtegaal, *Improving melatonin circadian phase estimates*.  
673 2007. **8**(6): p. 590-601.
- 674 63. Lin, Q., et al., *Weight spectrum and executive function in adolescents: the moderating role of*  
675 *negative emotions*. Child Adolesc Psychiatry Ment Health, 2022. **16**(1): p. 34.
- 676 64. Qian, Y. and Y.F. Wang, *[Reliability and validity of behavior rating scale of executive*  
677 *function parent form for school age children in China]*. Beijing Da Xue Xue Bao Yi Xue  
678 Ban, 2007. **39**(3): p. 277-83.
- 679 65. Chang, C.C., et al., *Second-generation PLINK: rising to the challenge of larger and richer*  
680 *datasets*. Gigascience, 2015. **4**: p. 7.
- 681 66. Bulik-Sullivan, B.K., et al., *LD Score regression distinguishes confounding from polygenicity*  
682 *in genome-wide association studies*. Nat Genet, 2015. **47**(3): p. 291-5.
- 683 67. Gazal, S., et al., *Linkage disequilibrium-dependent architecture of human complex traits*  
684 *shows action of negative selection*. Nature Genetics, 2017. **49**(10): p. 1421-1427.
- 685 68. Yavorska, O.O. and S. Burgess, *MendelianRandomization: an R package for performing*  
686 *Mendelian randomization analyses using summarized data*. Int J Epidemiol, 2017. **46**(6): p.  
687 1734-1739.
- 688 69. Bowden, J., et al., *Consistent Estimation in Mendelian Randomization with Some Invalid*  
689 *Instruments Using a Weighted Median Estimator*. GENETIC EPIDEMIOLOGY, 2016. **40**(4):  
690 p. 304-314.
- 691 70. Bowden, J. and M.V. Holmes, *Meta-analysis and Mendelian randomization: A review*.  
692 *Research Synthesis Methods*, 2019. **10**(4): p. 486-496.
- 693 71. Hu, Y., et al., *A statistical framework for cross-tissue transcriptome-wide association*  
694 *analysis*. Nature Genetics, 2019. **51**(3): p. 568-576.

695 **Acknowledgements**

696 The study was supported by the National Key R&D Program of China (2018YFC0910500), National  
697 Natural Science Foundation of China (82073568), Shanghai Jiao Tong University (YG2016ZD04),  
698 Shanghai Municipal Health Commission (GWIV-36 and GWV-10.1-XK07), SJTU-Yale Collaborative  
699 Research Seed Fund, the Neil Shen's SJTU Medical Research, and Innovative Research Team of High-  
700 level Local Universities in Shanghai (SHSMU-ZDCX20211900). The melatonin and adolescent  
701 datasets were kindly provided by the Shanghai Children's Medical Center. The authors are grateful to  
702 all members for contributing data to the two databases. This research was also conducted with the UK  
703 Biobank resource, under application 57947. We thank all individuals involving in the UK Biobank  
704 study. Additionally, we extend our gratitude to Du Jingyu for his assistance in refining the language of  
705 the manuscript.

#### 706 **Author contributions**

707 Conceptualization: CS, LQ; Data curation: CS, LQ; Formal analysis: CS, GY; Funding acquisition:  
708 LH, JF; Investigation: CS, LQ, ZY; Methodology: CS, LQ, ZH, LX; Project administration: ZY, JF;  
709 Resources: LH, JF; Supervision: LH, ZH, WX, LX, JF; Validation: CS, LQ, GY; Visualization: CS;  
710 Writing——original draft: CS; Writing——review & editing: CS, LQ, GY, ZY, LH, ZH, WX, LX,  
711 JF. All authors read and approved the final manuscript.

#### 712 **Ethics Declaration**

#### 713 **Competing interests**

714 The authors declare no competing interests.