

1 **Knowledge of COVID-19 Symptoms, Transmission, and Prevention: Evidence from Health and**  
2 **Demographic Surveillance in Southern Mozambique**

3  
4 Ariel Nhacolo, MSc<sup>1</sup>†, Zachary J. Madewell, PhD<sup>2\*</sup>‡, Jonathan A. Muir, PhD<sup>3</sup>, Charfudin Sacoor, MSc<sup>1</sup>,  
5 Elisio G. Xerinda<sup>1</sup>, MD, Teodomiro Matsena, BSc<sup>1</sup>, Quique Bassat, MD<sup>1,4,5,6,7</sup>, Cynthia G. Whitney, MD<sup>3</sup>,  
6 Inácio Mandomando, PhD<sup>1,4,8</sup>‡, and Solveig A. Cunningham, PhD<sup>3</sup>‡

7  
8 †Co-first authors  
9 ‡Co-senior authors

10  
11 Affiliations

- 12 1. Centro de Investigação em Saúde de Manhiça, Maputo, Mozambique  
13 2. Global Health Center, Centers for Disease Control and Prevention, Atlanta, GA, United States  
14 3. Emory University, Atlanta, GA, United States  
15 4. ISGlobal - Hospital Clínic, Unversitat de Barcelona, Barcelona, Spain  
16 5. Institutó Catalana de Recerca I Estudis Avançats, Barcelona, Spain  
17 6. Pediatrics Department, Hospital Sant Joan de Déu, Universitat de Barcelona, Esplugues, Barcelona,  
18 Spain  
19 7. Consorcio de Investigación Biomédica en Red de Epidemiología y Salud Pública, Madrid, Spain  
20 8. Instituto Nacional de Saúde, Maputo, Mozambique

21 \* Correspondence to: Zachary J. Madewell, Global Health Center, Centers for Disease Control and  
22 Prevention, 1600 Clifton Rd NE, Mailstop H21-9, Atlanta, GA 30329-4027, USA; [ock0@cdc.gov](mailto:ock0@cdc.gov)

23 **ABSTRACT**

24

25 **Background:** Over 230,000 COVID-19 cases and over 2,200 deaths have been reported in Mozambique  
26 though March 2023. Understanding community members' knowledge and perception of SARS-CoV-2  
27 transmission and prevention is essential for directing public health interventions to reduce disease spread  
28 and improve vaccination coverage. Here, we aimed to describe knowledge of COVID-19 transmission,  
29 prevention, and symptoms among community residents in Mozambique.

30

31 **Methods:** We conducted a cross-sectional survey among 33,087 of 40,636 households (81.4%) in a  
32 Health and Demographic Surveillance System in Manhica, Mozambique, at the tail end of the Delta  
33 variant wave in September 2021 to the peak of Omicron cases in January 2022. Principal components  
34 analysis was used to create scores representing knowledge of COVID-19 symptoms, transmission, and  
35 prevention. Multiple imputation and quasi-Poisson regression were used to examine associations between  
36 demographic characteristics and sources of COVID-19 information, and knowledge of COVID-19  
37 symptoms, transmission, and prevention. We examined whether sources of COVID-19 information  
38 mediated the relationship between educational attainment and knowledge of symptoms, transmission, and  
39 prevention.

40

41 **Results:** Across this rural community, 98.2%, 97.0%, and 85.1% of household respondents reported  
42 knowing how COVID-19 could be prevented, that SARS-CoV-2 can cause disease, and how SARS-CoV-  
43 2 is transmitted, respectively. Most recognized symptoms were cough (51.2%), headaches (44.9%), and  
44 fever (44.5%). Most cited transmission mechanisms were droplets (50.5%) or aerosol (<5 µm diameter)  
45 (46.9%) from an infected person. Most cited prevention measures were handwashing (91.9%) and mask-  
46 wearing (91.8%). Characteristics associated with greater knowledge of symptoms, transmission, and  
47 prevention included having at least primary education, older age, employment, higher wealth, and  
48 Christian religion. Respondents who had had COVID-19 symptoms were also more likely to have  
49 knowledge of symptoms, transmission, and prevention. Gathering information from TV, WhatsApp,  
50 radio, and hospital mediated the relationship between educational attainment and knowledge scores.

51

52 **Conclusions:** Community public health measures to reduce infectious disease transmission are contingent  
53 upon perceptions of risk and knowledge. These findings support the need for outreach and for  
54 community-engaged messaging to promote prevention measures, particularly among people with low  
55 education.

56

57

58 **Key words:** community; household; SARS-CoV-2; sub-Saharan Africa; health education; health  
59 communication; Delta; Omicron

## 60 **Background**

61           Coronavirus disease 2019 (COVID-19) was first reported in Mozambique in March 2020. Since  
62 then, there have been over 230,000 confirmed cases and over 2,200 deaths reported in Mozambique  
63 through March 2023 [1], though the death toll could be much higher than official figures due to the  
64 challenges experienced in the country's surveillance capacities and under-reporting [2].

65           Effective public health education programs are required to reduce the burden of COVID-19 and  
66 the strain on healthcare system resources. Studies of COVID-19 in sub-Saharan Africa have demonstrated  
67 positive associations between higher level of knowledge and practicing prevention measures [3, 4].  
68 Knowledge of COVID-19 transmission and disease was also positively associated with vaccination  
69 coverage [5], which is one of the most effective strategies for protecting individuals against COVID-19  
70 hospitalization and death [6, 7]. As of March 2023, 59.1% of Mozambique's population had completed a  
71 primary COVID-19 vaccine series of BBIBP-CorV (Sinopharm, Beijing CNBG) (two doses),  
72 Ad26.COV2.S (Janssen) (one dose), or ChAdOx1-S (Covishield) (two doses), but only 3.5% of these had  
73 received a booster dose [1]. COVID-19 vaccines became available for adolescents aged 12-17 in  
74 Mozambique in November 2022 [8].

75           Currently, there is limited information about knowledge of COVID-19 transmission, prevention,  
76 and symptoms in Mozambique. Two cross-sectional surveys on knowledge, attitudes and practices (KAP)  
77 among community healthcare workers in Mozambique using an online health platform [9] and among  
78 adolescents using a cross-sectional survey in two provinces of Central Mozambique [10] found low  
79 knowledge of symptoms, transmission, and prevention measures, but these were done early in the  
80 pandemic, before the emergence of more transmissible variants such as Delta and Omicron [11]. The  
81 studies' generalizability was also limited by convenience samples and small sample sizes. We conducted  
82 a population-based, representative study to evaluate factors associated with knowledge of COVID-19  
83 symptoms, transmission, and prevention, in a rural setting of southern Mozambique. This approach is  
84 important for reducing household transmission and improving vaccination coverage [12] and provides

85 information on how to tailor communication strategies to reduce community infectious disease  
86 transmission.

87

## 88 **Methods**

### 89 *Study design*

90 This study is part of a broader examination within the Child Health and Mortality Prevention  
91 Surveillance (CHAMPS) network to analyze the consequences of COVID-19 lockdowns for child health  
92 and mortality [13, 14]. Leveraging the established platform of the CHAMPS Network of Health and  
93 Demographic Surveillance Systems (HDSSs) [15], we administered a short questionnaire to all  
94 households in a rural district [16].

95

### 96 *Study setting and population*

97 Manhiça is a district in Maputo Province, located about 85 km north of the capital city, Maputo.  
98 An HDSS was established there in 1996 by the Manhiça Health Research Center (CISM) and currently  
99 covers the entire Manhiça District, which spans 2,380 km<sup>2</sup>. More information about the Manhiça  
100 HDSS has been published elsewhere [17]. With a population of 201,845 [17], Manhiça is the second most  
101 populated district in Maputo Province after the Matola District (the capital of Maputo Province). The  
102 major economic activity is sugarcane farming—Maragra and Xinavane are the main sugar factories in the  
103 country. The health system in Manhiça comprises one district hospital located in Manhiça village, one  
104 rural hospital located in the Xinavane administrative post, and 19 health centers.

105 Manhiça is a geographic corridor highly exposed to transmissible diseases such as HIV, and  
106 currently COVID-19, stemming from population migration. A large proportion of the Manhiça population  
107 migrate to the nearby capital city of Maputo or beyond to South Africa with regular return visits to their  
108 households in Manhiça. Moreover, the district is crossed by Mozambique's main road (National Road  
109 Number 1), which connects the Southern, Central, and Northern regions of the country as well as  
110 neighboring countries of South Africa, Eswatini, Zimbabwe, Malawi, Zambia, and Tanzania. The district

111 is also crossed by a railroad that connects to Maputo city and harbor. These transportation systems  
112 facilitate population migration and disease spread.

113 In each household, one household member was asked to participate on behalf of the household.  
114 Household members were eligible for inclusion if they resided at the residence between March 2020 and  
115 the date of interview. The questionnaire was conducted together with standard procedures for regular  
116 HDSS visits to all residences in the defined catchment area (census method) [17].

117

### 118 *Data collection and quality assurance*

119 A survey instrument was developed to collect information about households' experiences during  
120 the COVID-19 lockdown, which included information on knowledge regarding COVID-19 symptoms,  
121 transmission, and prevention. Questions were based on guidelines issued by the Ministry of Health for  
122 COVID-19 prevention in Mozambique [18]. Interviewers asked open-ended questions and recorded  
123 participants' responses. Data collection was conducted by HDSS fieldworkers during their regular visits  
124 to the households between March 2021 and January 2022 through tablet-based in-person interviews with  
125 heads of households or their representatives if the heads were unavailable. These data were linked with  
126 data from the HDSS questionnaires to incorporate socio-demographic data about the households:  
127 household size, number of children under 5 years of age, number of adults over 60 years, and number of  
128 pregnant women; household assets; and materials used for constructing the houses (Supplemental  
129 Methods, Figures S1-S2); variables about the head of household were age, sex, occupation, education,  
130 religion, mother language, and marital status.

131 Fieldworkers and supervisors were trained on the use of this new module by the study  
132 coordinator. Data cleaning and quality assurance followed standard procedures for the HDSS, whereby  
133 5% of households visited each week were revisited to confirm the recorded information. There was a  
134 script to filter errors at the time of uploading the data from the tablets to the server. Records with  
135 inconsistencies were returned to the field for reconciliations.

136

137 **Measures**

138 Head of household variables were: sex (female, male), age group (<18 years, 18-39 years, 40-64  
139 years,  $\geq 65$  years), religion (Catholic, Protestant, Christian unspecified, Zion church member, atheist,  
140 Evangelical, other, don't know), language (Tsonga, Echuwabo, Cisená, Bitonga, other), education (higher  
141 education, technical education, secondary education, primary education, no education), occupation  
142 (retired/pensioner, does not work, professional, merchants, skilled manual, unskilled manual,  
143 student/volunteer, other), marital status (single, married/de facto union, separated/divorced, widowed),  
144 and had had COVID-19 symptoms since COVID-19 was first reported in Mozambique (yes, no).  
145 Household variables were: household size (1, 2, 3, 4, 5, 6+), number of children under 5 years (0, 1, 2+),  
146 number of adults over 60 years (0, 1, 2+), number of pregnant women (0, 1+), and wealth index, which  
147 was derived from principal components analysis (PCA) (Supplemental Methods).

148 In accord with other KAP studies [19-22], we used PCA-based factor analysis to create scores for  
149 assessing the degree of knowledge of COVID-19 symptoms, transmission, and prevention (Supplemental  
150 Methods). The overall Kaiser-Meyer-Olkin index of sampling adequacy was 0.71, 0.73, and 0.83 for  
151 knowledge of symptoms, transmission, and prevention, so we concluded the sample size and data were  
152 adequate for the PCAs [16]. The resultant compound factor for knowledge of symptoms included seven  
153 variables that accounted for 32% of the variability in the data: difficulty breathing, dry cough, fever,  
154 headaches, muscle pain, and sore throat (Table S1). The compound factor for knowledge of transmission  
155 included eight variables that explained 29% of the variation: hugging, kissing, and droplets from an  
156 infected person; and touching a fomite (objects or materials which are likely to carry infection, such as  
157 clothes, utensils, and furniture), an infected person, or one's own eyes or nose, or mouth. The compound  
158 factor for knowledge of prevention included eight variables that explained 31% of the data variability:  
159 avoid crowded places, touching eyes, touching mouth, touching nose, or traveling; social distancing;  
160 quarantine; and wash hands with alcohol. Knowledge of symptoms, transmission, and prevention scores  
161 ranged from 0 to 3.3, 0 to 4.2, and 0 to 4.7, respectively, with higher scores representing greater  
162 knowledge.

163 Our survey also asked participants what they would do if someone in their family had symptoms  
164 suggestive of COVID-19. Response categories included: go to the hospital, quarantine, call the hospital,  
165 call the community leader, and treat symptoms at home; respondents could have said yes to multiple  
166 categories. Sources of information about COVID-19 included: TV, SMS/WhatsApp, radio, hospital,  
167 community leaders.

168

### 169 *Statistical Analysis*

170 We reported frequency distributions of individual characteristics (age, sex, education, occupation,  
171 religion, language, marital status) and household characteristics (wealth index, total number of household  
172 members, number under 5 children, number above 60 adults, number of pregnant women). We also  
173 reported frequencies and 95% confidence intervals (95% CI) for knowledge of COVID-19 symptoms,  
174 transmission, and prevention; management of suspected cases; and sources of information. There were  
175 minimal missing data for demographic variables, between 0.1% (age) to 9.6% (education). Consistent  
176 with other KAP studies [23-26], we used multiple imputation with predictive mean matching for these  
177 missing data to retain statistical power and avoid selection bias (Supplemental Methods).

178 Quasi-Poisson regression was used to evaluate unadjusted and adjusted associations between  
179 characteristics (age; sex; language; religion; marital status; education; occupation; wealth index; had  
180 COVID-19 symptoms; number of household members, children under 5, older adults, and pregnant  
181 women; sources of information) and knowledge of symptoms, transmission, and prevention scores  
182 (Supplemental Methods). Logistic regression was used to evaluate unadjusted and adjusted associations  
183 between the same characteristics and whether the respondents had experienced symptoms associated with  
184 COVID-19. Finally, we assessed whether sources of COVID-19 information mediated the relationship  
185 between educational attainment and knowledge of symptoms, transmission, and prevention scores  
186 (Supplemental Methods). This analysis followed causal mediation analysis methods as previously  
187 described by VanderWeele [27] and has been used in other KAP studies [28-31]. All analyses were done  
188 in R software, version 4.2.3 (R Foundation for Statistical Computing, Vienna, Austria).

189

## 190 **Results**

191 The Manhiça HDSS is home to 40,636 active households in 2021, of which 33,087 (81.4%)  
192 responded to this survey (Figure 1). Respondents (18,823, 56.9%) were heads of household, their spouses  
193 (7,905, 23.9%), children (3,025, 9.1%), or other family members (3,334, 10.1%). The majority of  
194 respondents (72.4%) were female, and the median age was 38 years (interquartile range [IQR]: 27–53  
195 years) (Table 1). More than half (54.4%) spoke Xirhonga, 34.5% were Zion church members, 70.0% had  
196 primary or no education, and 73.5% were manual laborers. Median household size was 3 (IQR: 2–5). Of  
197 all households, 43.5% had children under 5 years, 26.5% had adults over 60 years, and 3.0% had pregnant  
198 women (Table 1). Eight percent (2,465/33,087) of respondents reported having had symptoms suggestive  
199 of COVID-19 since the disease was first reported in Mozambique, most commonly flu-like symptoms  
200 (50.4%, 1,242/2,465), dry cough (48.0%, 1,182/2,465), headaches (33.8%, 832/2,465), fever (27.0%,  
201 665/2,465), and cough with sputum (21.9%, 541/2,465) (Table S2).

202 Nearly all (99.4%, 32,901/33,087) participants had heard of coronavirus, but 20.9%  
203 (6,926/33,087) were unfamiliar with the term COVID-19. Of all respondents, 98.2% reported knowing  
204 how SARS-CoV-2 transmission could be prevented, 97.0% knew SARS-CoV-2 may cause disease, and  
205 85.1% knew how SARS-CoV-2 is transmitted. The most commonly mentioned prevention measures were  
206 washing hands with soap (91.9%) and wearing a facemask (91.8%), whereas least mentioned included  
207 avoiding touching eyes (3.8%), nose (4.0%), and mouth (4.9%) (Figure 2). Most mentioned transmission  
208 mechanisms were droplets (50.5%) and aerosol (<5  $\mu\text{m}$  diameter) (46.9%) from an infected person; least  
209 mentioned were touching eyes or nose (9.2%), or mouth (10.7%). The most recognized COVID-19  
210 symptoms were dry cough (51.2%), headaches (44.9%), and fever (44.5%); least mentioned were  
211 nausea/vomiting (3.7%) and muscle or body aches (13.7%). Most participants (88.6%) indicated they  
212 would take symptomatic family members to the hospital for treatment, whereas 3.8% stated they would  
213 treat symptoms at home. The most cited sources of information regarding COVID-19 were television  
214 (44.0%), community leaders (36.2%), and radio (33.7%) (Table S3).



215 Unadjusted analyses between demographics and sources of information, and PCA-derived  
216 knowledge of symptoms, transmission, and prevention scores are shown in Figure S3: these were  
217 positively correlated ( $r = 0.47 \sim 0.63$ ;  $p < 0.001$ ) (Figure S4). Adjusting for all other variables in the  
218 models (see Figure 3), knowledge of COVID-19 symptoms, transmission, and prevention scores were  
219 highest among heads of household with higher ( $\beta$  coefficients: 0.43  $\sim$  0.47), technical (0.42  $\sim$  0.46), or  
220 secondary (0.35  $\sim$  0.41) education with no education as reference; and cited TV (0.25  $\sim$  0.47), radio (0.16  
221  $\sim$  0.38), or SMS/WhatsApp (0.16  $\sim$  0.36) as sources of information for COVID-19. Sources of  
222 information were significant mediators of the relationship between educational attainment and knowledge  
223 of symptoms, transmission, and prevention scores (Tables S4-S6). Compared to participants with no  
224 formal education, those with  $\geq$ primary education were more likely to have cited TV, hospital, radio,  
225 SMS/WhatsApp, and community leaders as sources of COVID-19 information than not cite them as  
226 sources of information; the higher the education level, the more likely participants cited these as sources  
227 of information. A significant proportion of the positive association between educational attainment and  
228 knowledge of symptoms, transmission, and prevention scores can be explained by mediators (TV,  
229 SMS/WhatsApp, and radio sources of information): the higher the education level, the greater the impact  
230 of these mediators on knowledge scores. Conversely, there was a significant negative natural indirect  
231 effect for community leaders and hospital, which indicates these sources of information may have  
232 attenuated the positive association of education on knowledge scores. Specifically, these sources of  
233 information were associated with slightly reduced COVID-19 knowledge among those with higher  
234 education.

235 In adjusted analyses, higher knowledge of symptoms, transmission, and prevention scores were  
236 among participants who were 18-64 years (0.07  $\sim$  0.19) with  $\geq 65$  as reference; were Roman Catholic,  
237 Protestant, or Evangelical (0.05  $\sim$  0.22) with Zion church members as reference; were merchants (0.08  $\sim$   
238 0.15), retired/pensioners (0.17  $\sim$  0.18), or professionals (0.07  $\sim$  0.12) with unemployed as reference; and  
239 were in the poorer to richest wealth index quintiles (0.11  $\sim$  0.25) with poorest as reference (Figure 3).  
240 Knowledge scores for all three indices were significantly lower for widowed (-0.10  $\sim$  -0.09) compared to

241 married participants. Furthermore, knowledge of symptoms and transmission, but not prevention, were  
242 higher for those who had COVID-19 symptoms (0.10 ~ 0.11). Knowledge of prevention and transmission  
243 were higher for males than females (0.04 ~ 0.08). Variance inflation factors for independent variables in  
244 all three adjusted models were <1.3, so there was no evidence of collinearity (Table S7).

245 The adjusted odds of having had symptoms consistent with COVID-19 were higher for  
246 participants with primary, secondary, technical, or higher education (aORs: 1.74 ~ 6.56) with no  
247 education as reference; Catholics, Protestants, Christians, Evangelicals, and Atheists with Zion church  
248 members as reference (aORs: 1.44 ~ 2.02); professionals (aOR: 1.30; 95% CI: 1.07-1.59) with  
249 unemployed as reference; single (aOR: 1.20; 95% CI: 1.07-1.35) with married as reference; and reported  
250 TV (aOR: 1.32; 95% CI: 1.19-1.47) as a source of COVID-19 information (Figure 5). The adjusted odds  
251 of COVID-19 symptoms were lower for individuals in the richest wealth index quintile (aOR: 0.83, 95%  
252 CI: 0.70, 0.98), were <18 years with ≥65 years as reference (aOR: 0.36, 95% CI: 0.24, 0.54) and who  
253 learned about COVID-19 from hospital, radio, or community leaders (aORs: 0.59 ~ 0.80).

254

## 255 **Discussion**

256 Community public health measures to reduce infectious disease transmission are contingent upon  
257 individual perceptions of risk and knowledge. In this census of over 33,000 household members in  
258 Manhiça, Mozambique, almost everyone had heard of coronavirus, were aware of COVID-19 symptoms,  
259 and knew how COVID-19 could be prevented. The most recognized COVID-19 symptoms were dry  
260 cough, headaches, fever, difficulty breathing, and sore throat, consistent with findings from a systematic  
261 review of COVID-19 knowledge in sub-Saharan Africa [4]. This study was conducted at the tail end of  
262 the Delta variant wave in September through the peak of Omicron cases in January in Mozambique [32].  
263 The most common Delta symptoms reported in the ZOE COVID Study in the U.K. included runny nose,  
264 headache, sneezing, sore throat, and loss of smell, whereas the most common Omicron symptoms were  
265 runny nose, headache, sore throat, sneezing, and persistent cough [33]. There was high knowledge of  
266 nonpharmaceutical prevention measures such as handwashing and mask-wearing, similar to a study in

267 Ethiopia [34], but less than half of household members reported social distancing and avoiding crowded  
268 places as prevention measures, which are among the most effective public health measures to prevent  
269 SARS-CoV-2 transmission [35, 36]. Approximately half of household members knew that SARS-CoV-2  
270 may be transmitted from droplets or aerosol from an infected person, which is the primary mode of  
271 SARS-CoV-2 transmission [37]. We also found that knowledge of symptoms, transmission, and  
272 prevention scores were positively correlated and there were consistent results between the knowledge  
273 outcomes.

274 The finding that participants with higher education had greater knowledge of COVID-19  
275 symptoms, transmission, and prevention is consistent with studies in Australia [38], Ethiopia [39],  
276 Indonesia [40], and South Korea [41]. Other studies also found that higher education was associated with  
277 COVID-19 vaccine acceptance [5, 42]. Mediation analyses demonstrated that TV, SMS/WhatsApp, and  
278 radio sources of information were significant mediators in the relationship between educational  
279 attainment and knowledge scores. Household heads with higher education were more likely to report TV,  
280 SMS and radio as sources of COVID-19 information, which were associated with higher knowledge  
281 scores. Only 20% of those with no education had a TV and 70% had a cellphone, whereas 86% with  
282 higher/university education had a TV and 99% had a cellphone. These resource discrepancies may also  
283 contribute to the finding that individuals in the higher wealth quintiles had higher knowledge scores.  
284 Other studies found that lower education was associated with misinformation, which may in part explain  
285 lower knowledge among this group as well [38, 43]. Participants with higher education also had the  
286 highest odds of having COVID-19 symptoms compared to those with no education, perhaps suggesting  
287 greater awareness of COVID-19 symptoms.

288 Older respondents had higher COVID-19 knowledge, consistent with other studies [40]. Older  
289 adults, particularly those with comorbidities, are at greater risk for severe illness, hospitalizations, and  
290 death from COVID-19: 70% of COVID-19-attributed deaths in the U.S. were among adults 70 years or  
291 older [44]. Other studies reported greater vaccination [5] and other preventive measures [45] among older  
292 adults compared to young adults. An online survey in Mozambique found that older participants were

293 more likely to accept COVID-19 vaccines [46]. Mozambique has a young population with a median age  
294 of 17.6 years [47]. Although younger adults are less likely to be hospitalized with COVID-19 compared  
295 to older adults, some develop severe disease, and they may be infectious without symptoms [48].

296 Other factors associated with higher COVID-19 knowledge scores included employment as  
297 merchants, professionals, and unskilled manual laborers; and Catholic, Protestant, and Evangelical  
298 religions. Additional outreach promoting information regarding COVID-19 transmission and prevention,  
299 as well as vaccine safety and effectiveness, should be tailored to local communities in their language and  
300 should engage community leaders [26]. Although not evaluated in this study, other KAP studies found  
301 higher knowledge scores among individuals with positive HIV status, urban residence, and no previous  
302 SARS-CoV-2 infection [10, 21]. Although we did not know HIV status of participants, this study was  
303 conducted in a community with high HIV prevalence. It is conceivable that previous experiences with and  
304 exposure to messaging for HIV and other endemic infectious diseases increased COVID-19 awareness in  
305 Manhiça. Additionally, individuals with HIV may have greater contact with the healthcare system,  
306 increasing the opportunity to learn about COVID-19 from healthcare providers. Rural southern  
307 Mozambique is also characterized by high levels of labor migration within Mozambique and to South  
308 Africa, but this study did not assess how that affected COVID-19 knowledge.

309 This study had several limitations. This study is not designed to be representative of all  
310 households in Mozambique; generalizability to a specific population is a feature of all population-based  
311 sub-national studies [15, 49]. Still, these results have broader relevance to educating communities about  
312 COVID-19 prevention. This was a cross-sectional study, which precludes establishing causal and  
313 temporal relationships between demographics and knowledge scores. There may have been social  
314 desirability bias in responses about knowledge. There may have been response bias if individuals with  
315 greater knowledge of COVID-19 were more likely to participate than those with less knowledge. Finally,  
316 there may have been recall bias due to the length of time in the study. Notwithstanding these limitations,  
317 regional census entails that these findings are representative of the district. To our knowledge, there are

318 no other studies of knowledge of COVID-19 symptoms, transmission, and prevention among community  
319 members in Mozambique.

320

### 321 **Conclusions**

322 In this census of over 33,000 community members in a rural district of Mozambique, most  
323 individuals had high knowledge of COVID-19 symptoms and prevention, but there was less knowledge  
324 about transmission. Messaging regarding COVID-19 in southern Mozambique effectively increased  
325 awareness of symptoms and prevention. These findings support the need for outreach and community  
326 engagement considering the target audience to promote COVID-19 prevention measures, particularly  
327 among vulnerable populations with lower educational status.

328 **Abbreviations**

329 CHAMPS: Child Health and Mortality Prevention Surveillance

330 HDSS: Health and Demographic Surveillance System

331 KAP: Knowledge, attitudes, and practices

332 PCA: principal components analysis

333 SAR: secondary attack rate

334 SMS: Short Message Service

335 **References**

- 336 1. **COVID-19 Mozambique** [<https://covid19.who.int/region/afro/country/mz>]
- 337 2. Wang H, Paulson KR, Pease SA, Watson S, Comfort H, Zheng P, Aravkin AY, Bisignano C,  
338 Barber RM, Alam T: **Estimating excess mortality due to the COVID-19 pandemic: a**  
339 **systematic analysis of COVID-19-related mortality, 2020–21.** *The Lancet* 2022,  
340 **399**(10334):1513-1536.
- 341 3. Yesuf M, Abdu M: **Knowledge, attitude, prevention practice, and associated factors toward**  
342 **COVID-19 among preparatory school students in Southwest Ethiopia, 2021.** *PLOS ONE*  
343 2022, **17**(1):e0262907.
- 344 4. Nwagbara UI, Osual EC, Chireshe R, Bolarinwa OA, Saeed BQ, Khuzwayo N, Hlongwana KW:  
345 **Knowledge, attitude, perception, and preventative practices towards COVID-19 in sub-**  
346 **Saharan Africa: A scoping review.** *PLOS ONE* 2021, **16**(4):e0249853.
- 347 5. Abebe H, Shitu S, Mose A: **Understanding of COVID-19 vaccine knowledge, attitude,**  
348 **acceptance, and determinates of COVID-19 vaccine acceptance among adult population in**  
349 **Ethiopia.** *Infection and drug resistance* 2021, **14**:2015.
- 350 6. Shapiro J, Dean NE, Madewell ZJ, Yang Y, Halloran ME, Longini I: **Efficacy estimates for**  
351 **various COVID-19 vaccines: what we know from the literature and reports.** *MedRxiv* 2021.
- 352 7. Song S, Madewell ZJ, Liu M, Longini IM, Yang Y: **Effectiveness of SARS-CoV-2 Vaccines**  
353 **against Omicron Infection and Severe Events: A Systematic Review and Meta-Analysis of**  
354 **Test-Negative Design Studies.** *medRxiv* 2023:2023.2002.2016.23286041.
- 355 8. **U.S. Government and Government of Mozambique Launch Adolescent Vaccine Campaign**  
356 **with Pfizer-BioNTech COVID-19 Vaccines** [[https://mz.usembassy.gov/u-s-government-and-](https://mz.usembassy.gov/u-s-government-and-government-of-mozambique-launch-adolescent-vaccine-campaign-with-pfizer-biontech-covid-19-vaccines/)  
357 [government-of-mozambique-launch-adolescent-vaccine-campaign-with-pfizer-biontech-covid-](https://mz.usembassy.gov/u-s-government-and-government-of-mozambique-launch-adolescent-vaccine-campaign-with-pfizer-biontech-covid-19-vaccines/)  
358 [19-vaccines/](https://mz.usembassy.gov/u-s-government-and-government-of-mozambique-launch-adolescent-vaccine-campaign-with-pfizer-biontech-covid-19-vaccines/)]
- 359 9. Feldman M, Lacey Krylova V, Farrow P, Donovan L, Zandamela E, Rebelo J, Rodrigues M, Buló  
360 A, Ferraz C, Rodrigues H *et al*: **Community health worker knowledge, attitudes and practices**

- 361           **towards COVID-19: Learnings from an online cross-sectional survey using a digital health**  
362           **platform, UpSCALE, in Mozambique. *PLOS ONE* 2021, 16(2):e0244924.**
- 363    10.    Marotta C, Nacareia U, Estevez AS, Tognon F, Genna GD, De Meneghi G, Occa E, Ramirez L,  
364           Lazzari M, Di Gennaro F: **Mozambican adolescents and youths during the COVID-19**  
365           **pandemic: knowledge and awareness gaps in the provinces of sofala and tete.** In: *Healthcare:*  
366           *2021*: MDPI; 2021: 321.
- 367    11.    Madewell ZJ, Yang Y, Longini IM, Jr., Halloran ME, Dean NE: **Household Secondary Attack**  
368           **Rates of SARS-CoV-2 by Variant and Vaccination Status: An Updated Systematic Review**  
369           **and Meta-analysis. *JAMA Netw Open* 2022, 5(4):e229317.**
- 370    12.    Madewell ZJ, Yang Y, Longini IM, Halloran ME, Dean NE: **Factors associated with household**  
371           **transmission of SARS-CoV-2: an updated systematic review and meta-analysis. *JAMA***  
372           *network open* 2021, 4(8):e2122240-e2122240.
- 373    13.    Muir JA, Dheresa M, Madewell ZJ, Getachew T, Mengesha G, Whitney CG, Assefa N,  
374           Cunningham SA: **Household Hardships during the COVID-19 Pandemic: Examining**  
375           **Household Vulnerability and Responses to Pandemic Related Shocks in Eastern Ethiopia.**  
376           *medRxiv* 2023:2023.2002.2001.23285322.
- 377    14.    Muir JA, Dheresa M, Madewell ZJ, Getachew T, Mengesha G, Whitney CG, Assefa N,  
378           Cunningham SA: **Food Insecurity amid COVID-19 Lockdowns: Assessing Sociodemographic**  
379           **Indicators of Vulnerability in Harar and Kersa, Ethiopia. *medRxiv***  
380           2023:2023.2001.2031.23284545.
- 381    15.    Cunningham SA, Shaikh NI, Nhacolo A, Raghunathan PL, Kotloff K, Naser AM, Mengesha  
382           MM, Adedini SA, Misore T, Onuwchekwa UU: **Health and Demographic Surveillance**  
383           **Systems within the Child Health and Mortality Prevention Surveillance Network. *Clinical***  
384           *Infectious Diseases* 2019, 69(Supplement\_4):S274-S279.
- 385    16.    Nhacolo A, Magaço A, Amosse F, Hunguana A, Matsena T, Nhacolo A, Xerinda E, Bassat Q,  
386           Sacoor C, Mandomando I *et al*: **Perceptions and compliance with COVID-19 preventive**



- 387 **measures in Southern and Central regions of Mozambique: a quantitative in-person**  
388 **household survey in the districts of Manhiça and Quelimane.** *medRxiv*  
389 2022:2022.2011.2017.22282473.
- 390 17. Nhacolo A, Jamisse E, Augusto O, Matsena T, Hanguana A, Mandomando I, Arnaldo C,  
391 Munguambe K, Macete E, Alonso P *et al*: **Cohort Profile Update: Manhiça Health and**  
392 **Demographic Surveillance System (HDSS) of the Manhiça Health Research Centre (CISM).**  
393 *Int J Epidemiol* 2021, **50**(2):395.
- 394 18. **Manual de prevencao da COVID-19** [[https://www.misau.gov.mz/index.php/manuais-e-](https://www.misau.gov.mz/index.php/manuais-e-material-educativo?download=322:manual-de-prevencao-a-covid-19)  
395 [material-educativo?download=322:manual-de-prevencao-a-covid-19](https://www.misau.gov.mz/index.php/manuais-e-material-educativo?download=322:manual-de-prevencao-a-covid-19)]
- 396 19. Hajj A, Domiati S, Haddad C, Sacre H, Akl M, Akel M, Tawil S, Abramian S, Zeenny RM,  
397 Hodeib F *et al*: **Assessment of knowledge, attitude, and practice regarding the disposal of**  
398 **expired and unused medications among the Lebanese population.** *J Pharm Policy Pract*  
399 2022, **15**(1):107.
- 400 20. Ayre J, Cvejic E, McCaffery K, Copp T, Cornell S, Dodd RH, Pickles K, Batcup C, Isautier MJJ,  
401 Nickel B *et al*: **Contextualising COVID-19 prevention behaviour over time in Australia:**  
402 **Patterns and long-term predictors from April to July 2020 in an online social media sample.**  
403 *PLoS One* 2021, **16**(6):e0253930.
- 404 21. Kwabla MP, Nyasordzi J, Kye-Duodu G, Ananga MK, Amenuvegbe GK, Otoo J, Nuerthey DD,  
405 Mensah EK, Asante-Afari K, Aboagye D *et al*: **Factors associated with COVID-19 knowledge**  
406 **among Ghanaians: A national survey.** *PLOS ONE* 2022, **17**(11):e0276381.
- 407 22. Madewell ZJ, Chacón-Fuentes R, Jara J, Mejía-Santos H, Molina I-B, Alvis-Estrada JP, Ortiz M-  
408 R, Coello-Licon R, Montejo B: **Knowledge, attitudes, and practices of seasonal influenza**  
409 **vaccination in healthcare workers, Honduras.** *Plos one* 2021, **16**(2):e0246379.
- 410 23. Berhe NM, Van de Velde S, Rabiee-Khan F, van der Heijde C, Vonk P, Buffel V, Wouters E,  
411 Van Hal G: **Knowledge deficit and fear of COVID-19 among higher education students**

- 412 **during the first wave of the pandemic and implications for public health: a multi-country**  
413 **cross-sectional survey.** *BMC Public Health* 2022, **22**(1):1144.
- 414 24. Rizzo C, Campagna I, Pandolfi E, Croci I, Russo L, Ciampini S, Gesualdo F, Tozzi AE, Ricotta  
415 L, Raponi M *et al*: **Knowledge and Perception of COVID-19 Pandemic during the First**  
416 **Wave (Feb-May 2020): A Cross-Sectional Study among Italian Healthcare Workers.** *Int J*  
417 *Environ Res Public Health* 2021, **18**(7).
- 418 25. Bikaki A, Machiorlatti M, Clark LC, Robledo CA, Kakadiaris IA: **Factors Contributing to**  
419 **SARS-CoV-2 Vaccine Hesitancy of Hispanic Population in Rio Grande Valley.** *Vaccines*  
420 *(Basel)* 2022, **10**(8).
- 421 26. Madewell ZJ, Chacón-Fuentes R, Badilla-Vargas X, Ramirez C, Ortiz M-R, Alvis-Estrada J-P,  
422 Jara J: **Knowledge, attitudes, and practices regarding seasonal influenza vaccination during**  
423 **pregnancy in Costa Rica: A mixed-methods study.** *Vaccine* 2022, **40**(48):6931-6938.
- 424 27. VanderWeele T: **Explanation in causal inference: methods for mediation and interaction:**  
425 Oxford University Press; 2015.
- 426 28. Sengupta M, Dutta S, Roy A, Chakrabarti S, Mukhopadhyay I: **Knowledge, attitude and**  
427 **practice survey towards COVID-19 vaccination: A mediation analysis.** *Int J Health Plann*  
428 *Manage* 2022, **37**(4):2063-2080.
- 429 29. Luz PM, Brown HE, Struchiner CJ: **Disgust as an emotional driver of vaccine attitudes and**  
430 **uptake? A mediation analysis.** *Epidemiol Infect* 2019, **147**:e182.
- 431 30. Maloney P, Tietje L, Rung A, Broyles S, Couk J, Peters E, Straif-Bourgeois S: **The mediating**  
432 **effects of barriers to vaccination on the relationship between race/ethnicity and influenza**  
433 **vaccination status in a rural Southeastern Louisiana medical center.** *J Prev Med Hyg* 2022,  
434 **63**(3):E482-e491.
- 435 31. Granderath JS, Sondermann C, Martin A, Merkt M: **Actual and Perceived Knowledge About**  
436 **COVID-19: The Role of Information Behavior in Media.** *Front Psychol* 2021, **12**:778886.

- 437 32. **WHO Coronavirus (COVID-19) Dashboard: Mozambique**  
438 [\[https://covid19.who.int/region/afro/country/mz\]](https://covid19.who.int/region/afro/country/mz)
- 439 33. Menni C, Valdes AM, Polidori L, Antonelli M, Penamakuri S, Nogal A, Louca P, May A,  
440 Figueiredo JC, Hu C: **Symptom prevalence, duration, and risk of hospital admission in**  
441 **individuals infected with SARS-CoV-2 during periods of omicron and delta variant**  
442 **dominance: a prospective observational study from the ZOE COVID Study.** *The Lancet*  
443 2022, **399**(10335):1618-1624.
- 444 34. Desalegn Z, Deyessa N, Teka B, Shiferaw W, Hailemariam D, Addissie A, Abagero A, Kaba M,  
445 Abebe W, Nega B *et al*: **COVID-19 and the public response: Knowledge, attitude and**  
446 **practice of the public in mitigating the pandemic in Addis Ababa, Ethiopia.** *PLOS ONE*  
447 2021, **16**(1):e0244780.
- 448 35. Talic S, Shah S, Wild H, Gasevic D, Maharaj A, Ademi Z, Li X, Xu W, Mesa-Eguiagaray I,  
449 Rostron J: **Effectiveness of public health measures in reducing the incidence of covid-19,**  
450 **SARS-CoV-2 transmission, and covid-19 mortality: systematic review and meta-analysis.**  
451 *bmj* 2021, **375**.
- 452 36. Madewell ZJ, Yang Y, Longini IM, Halloran ME, Dean NE: **Household transmission of SARS-**  
453 **CoV-2: a systematic review and meta-analysis.** *JAMA network open* 2020, **3**(12):e2031756-  
454 e2031756.
- 455 37. Meyerowitz EA, Richterman A, Gandhi RT, Sax PE: **Transmission of SARS-CoV-2: a review**  
456 **of viral, host, and environmental factors.** *Annals of internal medicine* 2021, **174**(1):69-79.
- 457 38. Pickles K, Cvejic E, Nickel B, Copp T, Bonner C, Leask J, Ayre J, Batcup C, Cornell S, Dakin T:  
458 **COVID-19 misinformation trends in Australia: prospective longitudinal national survey.**  
459 *Journal of medical Internet research* 2021, **23**(1):e23805.
- 460 39. Yesse M, Muze M, Kedir S, Argaw B, Dengo M, Nesre T, Hamdalla F, Saliha A, Mussa T,  
461 Kasim I *et al*: **Assessment of knowledge, attitude and practice toward COVID-19 and**

- 462 associated factors among health care workers in Silte Zone, Southern Ethiopia. *PLOS ONE*  
463 2021, **16**(10):e0257058.
- 464 40. Sulistyawati S, Rokhmayanti R, Aji B, Wijayanti SPM, Hastuti SKW, Sukesi TW, Mulasari SA:  
465 **Knowledge, attitudes, practices and information needs during the covid-19 pandemic in**  
466 **indonesia.** *Risk Management and Healthcare Policy* 2021, **14**:163.
- 467 41. Lee M, Kang B-A, You M: **Knowledge, attitudes, and practices (KAP) toward COVID-19: a**  
468 **cross-sectional study in South Korea.** *BMC public health* 2021, **21**(1):1-10.
- 469 42. Shakeel CS, Mujeeb AA, Mirza MS, Chaudhry B, Khan SJ: **Global COVID-19 vaccine**  
470 **acceptance: a systematic review of associated social and behavioral factors.** *Vaccines* 2022,  
471 **10**(1):110.
- 472 43. Madewell ZJ, Chacón-Fuentes R, Jara J, Mejía-Santos H, Molina I-B, Alvis-Estrada JP, Espinal  
473 **R: Knowledge, attitudes, and practices of seasonal influenza vaccination among older adults**  
474 **in nursing homes and daycare centers, Honduras.** *PLOS ONE* 2021, **16**(2):e0246382.
- 475 44. Goldstein JR, Lee RD: **Demographic perspectives on the mortality of COVID-19 and other**  
476 **epidemics.** *Proceedings of the National Academy of Sciences* 2020, **117**(36):22035-22041.
- 477 45. González-Herrera A, Rodríguez-Blázquez C, Romay-Barja M, Falcon-Romero M, Ayala A,  
478 Forjaz MJ: **Age differences in knowledge, attitudes and preventive practices during the**  
479 **COVID-19 pandemic in Spain.** *Scientific Reports* 2022, **12**(1):1-8.
- 480 46. Dula J, Mulhanga A, Nhanombe A, Cumbi L, Júnior A, Gwatsvaira J, Fodjo JNS, Faria de Moura  
481 Villela E, Chicumbe S, Colebunders R: **COVID-19 vaccine acceptability and its determinants**  
482 **in Mozambique: An online survey.** *Vaccines* 2021, **9**(8):828.
- 483 47. **Population Division: World Population Prospects 2022** [<https://population.un.org/wpp/>]
- 484 48. Ravindra K, Malik VS, Padhi BK, Goel S, Gupta M: **Asymptomatic infection and transmission**  
485 **of COVID-19 among clusters: systematic review and meta-analysis.** *Public Health* 2022,  
486 **203**:100-109.

487 49. Clark S, Wakefield J, McCormick T, Ross M: **Hyak Mortality Monitoring System: Innovative**  
488 **Sampling and Estimation Methods–Proof of Concept by Simulation.** *Global Health,*  
489 *Epidemiology and Genomics* 2018, **3**.

490

#### 491 **Declarations**

#### 492 **Ethics approval and consent to participate**

493 The HDSS data collection has ethical approval from the Institutional Ethics Review Board for  
494 Health (CIBS) and Internal Scientific Committee (CCI) at CISM, and the National Bioethics Committee  
495 for Health (CNBS-Mozambique).

496 This study used part of the existing HDSS data, for which all the heads of households and  
497 household members in Manhiça district have voluntarily agreed and signed a written detailed informed  
498 consent for providing their demographic and socio-economic data, including that of their households and  
499 their young dependents (children under the age of 18 years), in the context of HDSS. In relation to new  
500 data, the study team obtained approval from CISM’s CCI and CIBS to collect the data based on voice-  
501 recorded informed oral consent to minimize the risk of COVID-19 transmission when handling paper-  
502 based informed and signed consents between interviewers and interviewees. Data collection was mainly  
503 over the phone to minimize contacts due to COVID-19. Even during household visits (which were done  
504 for participants unreachable by phone), informed consent was oral and voice-recorded to minimize the  
505 risk of COVID-19.

506 All communications with study participants were done with the language of each participant’s  
507 preference. Where the preferred language was not Portuguese, the fieldworkers translated the  
508 questionnaires *in situs* as in other studies that the HDSS and social science team has conducted. Where  
509 the fieldworker could not speak the participant’s preferred language, a translator was sought in the  
510 household, or a suitable fieldworker conducted the communication at another time.

511 **Consent for publication:** Not applicable.

512 **Competing interests:** The authors declare no conflict of interests.

513 **Availability of data and materials:** The datasets used and/or analyzed during the current study are  
514 available from the corresponding author on reasonable request.

515 **Funding:** This work was supported, in whole or in part, by grant OPP1126780 from the Bill & Melinda  
516 Gates Foundation to Dr. Cynthia Whitney. Under the grant conditions of the Foundation, a Creative  
517 Commons Attribution 4.0 Generic License has already been assigned to the Author Accepted Manuscript  
518 version that might arise from this submission. CISM is supported by the Government of Mozambique and  
519 the Spanish Agency for International Development (AECID).

520 **Authors' contributions:** Conceptualization (AN, CS, TM, QB, IM), data curation (AN, CS, TM, QB,  
521 IM), formal analysis (ZM, JM), investigation (AN, ZM, JM, CS, TM, QB, IM), methodology (AN, ZM,  
522 JM, CS, TM, QB, IM, SC), project administration (AN, CS, TM, QB, IM, SC), resources (AN, CS, TM,  
523 QB, IM), supervision (AN, QB, CW, IM, SC), visualization (ZM, JM), writing – original draft  
524 preparation (ZM, JM), writing – review & editing (AN, ZM, JM, CS, TM, QB, CW, IM, SC).

525 **Acknowledgements:** CISM is supported by the Government of Mozambique and the Spanish Agency for  
526 International Development (AECID). ISGlobal receives support from the Spanish Ministry of Science and  
527 Innovation through the “Centro de Excelencia Severo Ochoa 2019-2023” Program (CEX2018-000806-S),  
528 and support from the Generalitat de Catalunya through the CERCA Program.

529 **Disclaimer:** The findings and conclusions in this report are those of the authors and do not necessarily  
530 represent the views of the US Centers for Disease Control and Prevention.

531 **Figure Titles and Legends**

532 **Figure 1. Map of Manhiça District.** Source: Created by the authors using Health and Demographic  
533 Surveillance System (HDSS) cartographic data.

534 **Figure 2. Knowledge of COVID-19 transmission, prevention and symptoms, and management of**  
535 **suspected cases, Mozambique, September 2021 – January 2022 (N=33,087).** Error bars represent 95%  
536 confidence intervals.

537 **Figure 3. Adjusted<sup>a</sup> associations between demographics and sources of information, and knowledge**  
538 **of prevention, symptoms, and transmission indices<sup>b</sup> derived from principal components analysis,**  
539 **Mozambique, September 2021 – January 2022 (N=33,087).** Points represent  $\beta$  coefficients and error  
540 bars represent 95% confidence intervals. <sup>a</sup>Adjusted for all other variables in the model. <sup>b</sup>Knowledge of  
541 prevention includes: avoid crowded places, touching eyes, touching mouth, touching nose, or traveling;  
542 social distancing; quarantine; and wash hands with alcohol. Knowledge of symptoms includes: difficulty  
543 breathing, dry cough, fever, headaches, muscle pain, and sore throat. Knowledge of transmission  
544 includes: avoid crowded places, touching eyes, touching mouth, touching nose, or traveling; social  
545 distancing; quarantine; and wash hands with alcohol.

546 **Figure 4. Unadjusted and adjusted<sup>a</sup> associations between demographics and sources of information,**  
547 **and had COVID-19 symptoms, Mozambique, September 2021 – January 2022 (N=33,087).** X-axis is  
548 shown on a log-scale. <sup>a</sup>Adjusted for all other variables in the model.

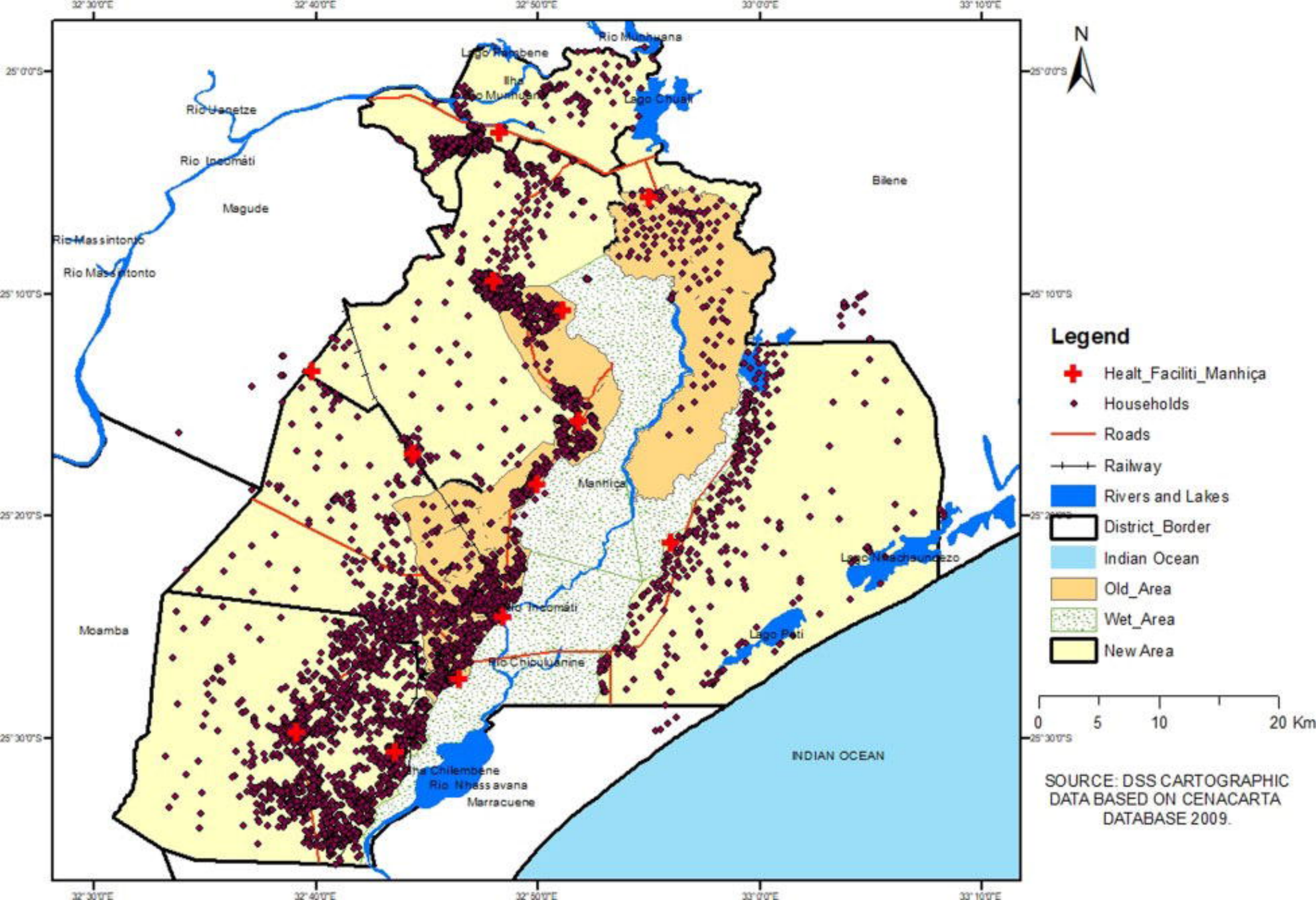
<b>Table 1. Descriptive statistics of individuals who participated in COVID-19 cross-sectional survey, Mozambique, September 2021 – January 2022, (N=33,087)</b>			
Characteristic	Observed data (N=33,087)		Imputed (N=33,087)
	N	%	%
<b>Individual characteristics</b>			
Age (years) (N=33,046)			
<18	1,064	3.2	3.2
18-39	17,017	51.5	51.5
40-64	10,684	32.3	32.3
≥65	4,281	13.0	13.0
Female sex (N=32,153)	23,287	72.4	72.4
Language (N=31,852)			
Tsonga	29,787	93.5	93.5
Bitonga	482	1.5	1.5
Cisena	303	1.0	1.0
Echuwabo	348	1.1	1.1
Other	932	2.9	2.9
Religion (N=31,914)			
Catholic	2,791	8.7	8.7
Protestant	6,106	19.2	19.2
Christian unspecified	4,512	14.1	14.2
Zion church member	11,043	34.6	34.5
Atheist	1,992	6.2	6.2
Evangelical	4,687	14.7	14.7
Other	783	2.5	2.5
Education (N=29,924)			
No education	3,050	10.2	10.3
Primary education	17,797	59.5	59.7
Secondary education	8,472	28.3	28.0
Technical education	311	1.0	1.0
Higher education	294	1.0	0.9
Occupation (N=31,597)			
Does not work	3,036	9.6	9.7
Student/volunteer	1,144	3.6	3.7
Unskilled manual	909	2.9	2.9
Skilled manual	22,340	70.7	70.6
Merchants	772	2.4	2.4
Professional	1,671	5.3	5.3
Retired/pensioner	455	1.5	1.4
Other	1,270	3.8	3.8
Marital status (N=31,891)			
Single	5,856	18.4	18.4
Married/De facto union	17,332	54.4	54.4
Separated/divorced	3,896	12.2	12.2
Widowed	4,807	15.0	15.0
Had COVID-19 symptoms	2,465	7.5	7.5
<b>Household characteristics</b>			
Household size (32,744)			
1	4,240	13.0	13.2
2	4,272	13.0	13.1
3	4,833	14.8	14.8
4	5,153	15.7	15.7
5	4,841	14.8	14.7
≥6	9,405	28.7	28.5
Children under age 5			
0	18,686	56.5	56.5
1	10,552	31.9	31.9

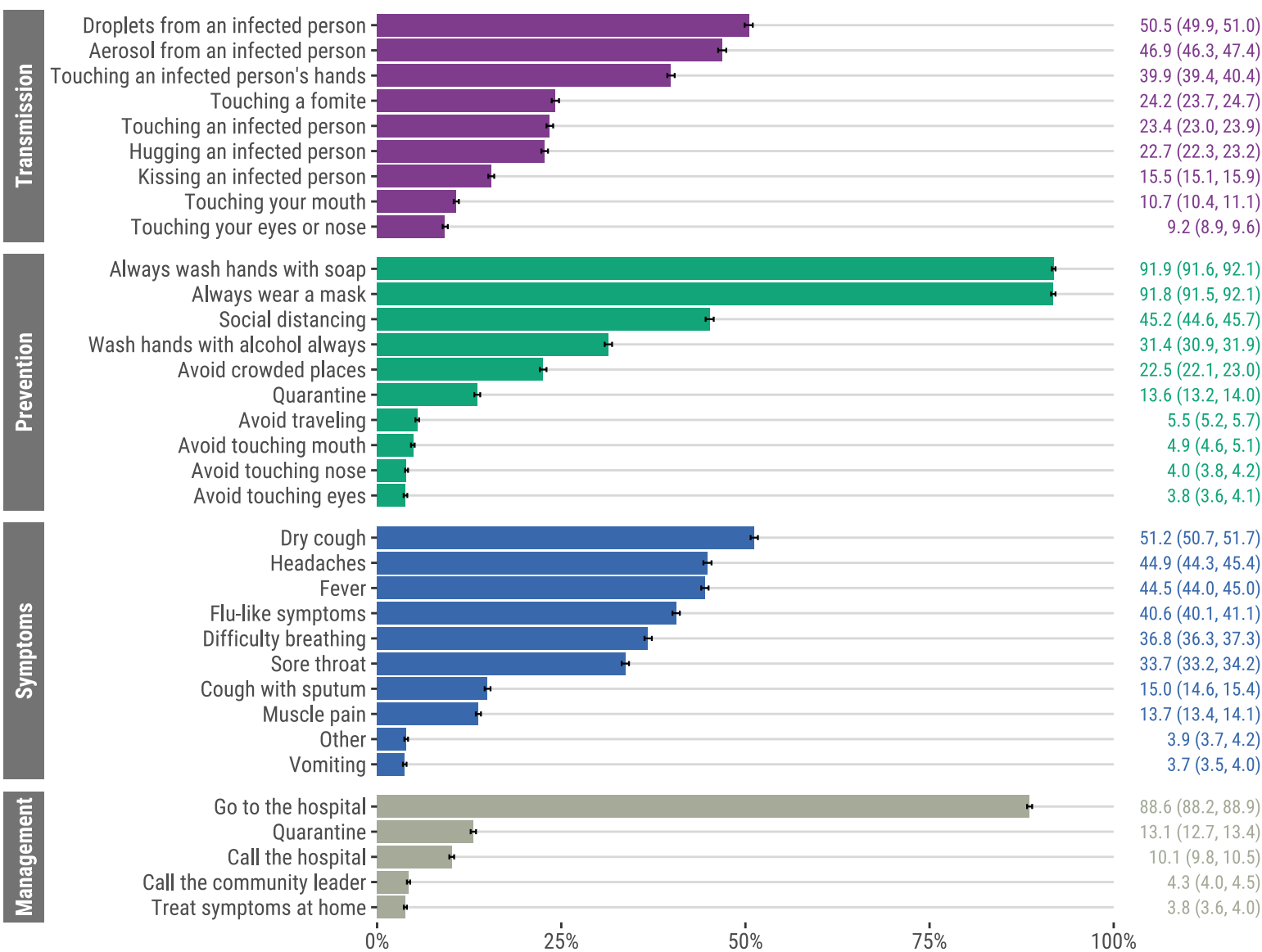


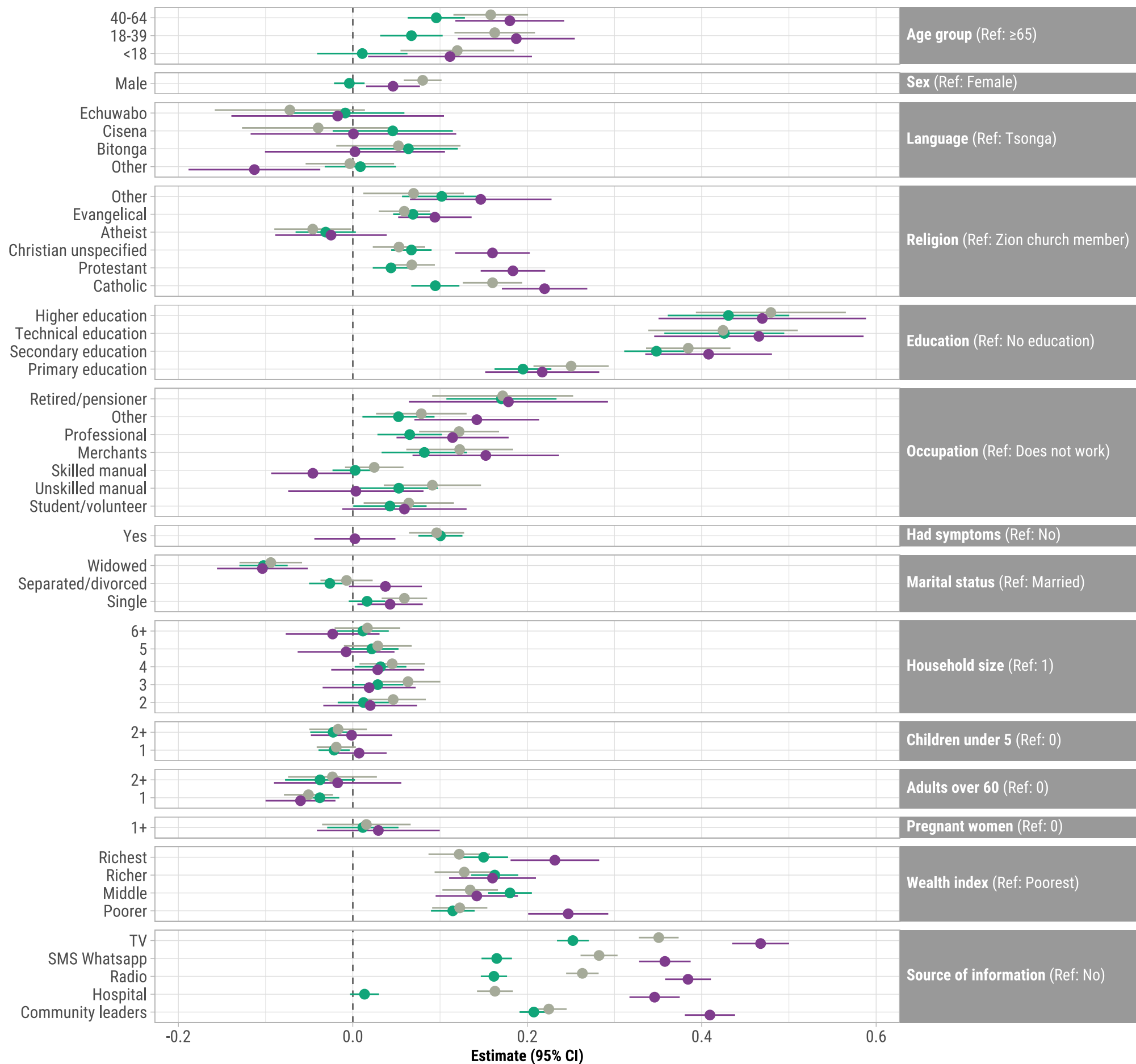
≥2	3,849	11.6	11.6
Elderly over age 60			
0	24,316	73.5	73.5
1	7,219	21.8	21.8
≥2	1,552	4.7	4.7
Pregnant women			
0	32,105	97.0	97.0
≥1	982	3.0	3.0
Wealth index			
Poorest	6,618	20.0	20.0
Poorer	6,612	20.0	20.0
Middle	6,621	20.0	20.0
Richer	6,612	20.0	20.0
Richest	6,624	20.0	20.0
N=33,087 unless stated otherwise due to non-response			

549

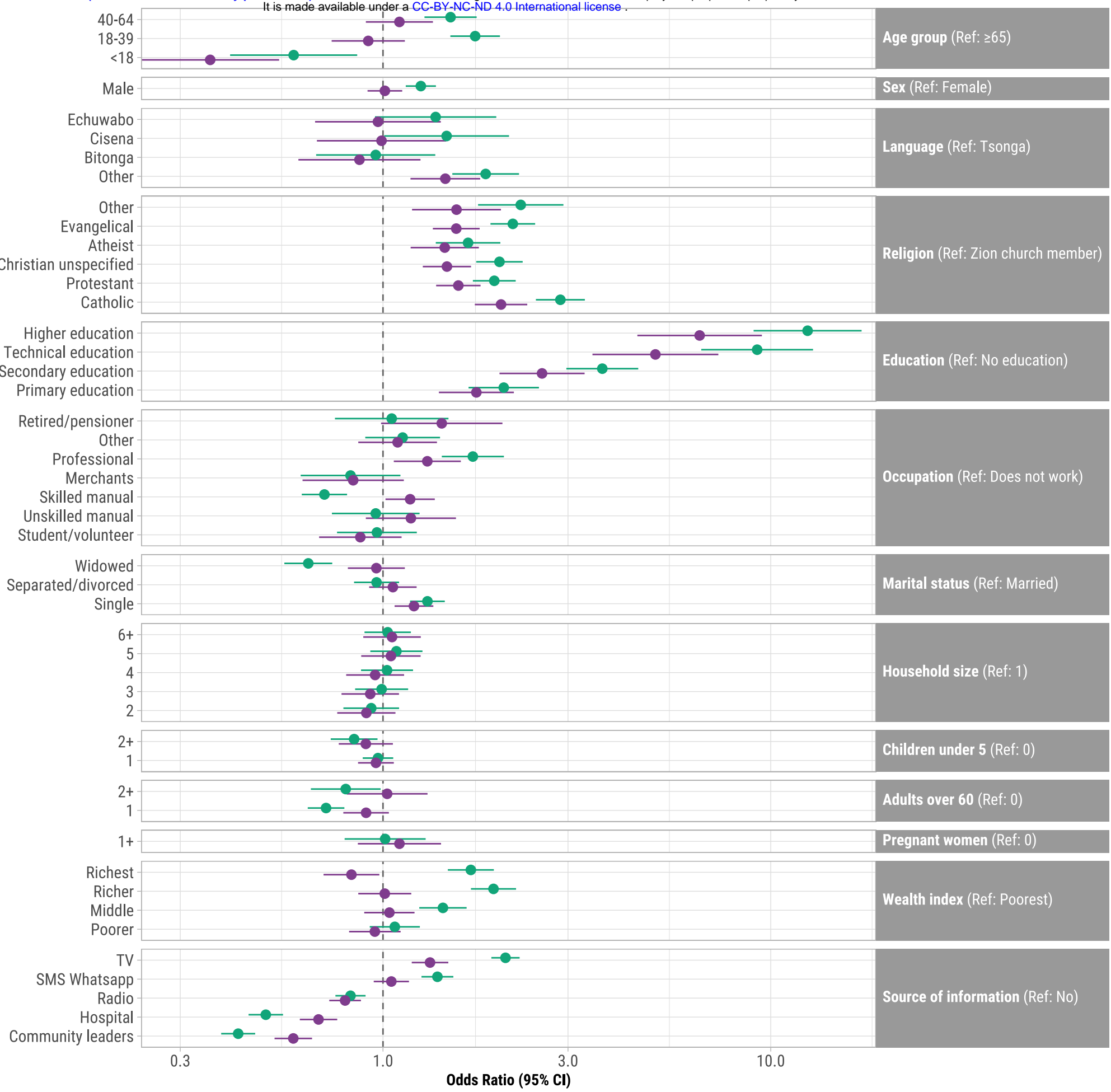
550







● Knowledge of prevention
 ● Knowledge of symptoms
 ● Knowledge of transmission



Adjusted (purple dot) Unadjusted (green dot)