

# 1 **The rapid emergence of *Salmonella*** 2 **Typhi with decreased ciprofloxacin** 3 **susceptibility following an increase in** 4 **ciprofloxacin prescriptions in Blantyre,** 5 **Malawi**

6  
7 Working title – Decreased ciprofloxacin sensitivity *S. Typhi* in Blantyre

8 Authors - Philip M. Ashton<sup>1,2</sup>, Angeziwa Chunga Chirambo<sup>\*1,2,3</sup>, James E. Meiring<sup>\*1,4</sup>,

9 Priyanka D. Patel<sup>1</sup>, Maurice Mbewe<sup>1</sup>, Niza Silungwe<sup>1</sup>, Kenneth Chizani<sup>1</sup>, Happy Banda<sup>1</sup>,

10 Robert S. Heyderman<sup>5</sup>, Zoe A. Dyson<sup>6, 7, 8</sup>, Peter MacPherson<sup>1,6,9</sup>, Marc Y.R. Henrion<sup>1,10</sup>,

11 STRATAA Study Group, Kathryn E. Holt<sup>6,7</sup>, Melita A. Gordon<sup>1,2</sup>

12 \* Authors contributed equally

13

14 1 Malawi-Liverpool Wellcome Programme, Blantyre, Malawi

15 2 Institute of Infection, Veterinary & Ecological Sciences, University of Liverpool, Liverpool,

16 United Kingdom

17 3 Department of Medical Laboratory Sciences, Kamuzu University of Health Sciences,

18 Blantyre, Malawi

19 4 Department of Infection, Immunity and Cardiovascular Disease, University of Sheffield,

20 Sheffield, United Kingdom

- 21 5 Research Department of Infection, Division of Infection and Immunity, University College  
22 London, London, United Kingdom
- 23 6 Faculty of Infectious and Tropical Diseases, London School of Hygiene & Tropical Medicine,  
24 London WC1E 7HT, United Kingdom
- 25 7 Department of Infectious Diseases, Central Clinical School, Monash University, Melbourne,  
26 Victoria 3004, Australia
- 27 8 Wellcome Sanger Institute, Wellcome Genome Campus, Hinxton, Cambridgeshire, United  
28 Kingdom
- 29 9 School of Health & Wellbeing, University of Glasgow, Glasgow, United Kingdom
- 30 10 Department of Clinical Sciences, Liverpool School of Tropical Medicine, Liverpool, United  
31 Kingdom
- 32

## 33 Abstract

34 Ciprofloxacin is the first-line drug for treating typhoid fever in many high burden countries  
35 in Africa, but the emergence of non-susceptibility poses a grave challenge to public health  
36 programmes. Through enhanced surveillance as part of vaccine evaluation, we set out to  
37 investigate the occurrence and determinants of ciprofloxacin non-susceptibility in Blantyre,  
38 Malawi.

39

40 We performed systematic typhoid fever and antibiotic prescription surveillance in two  
41 health centres in Blantyre, Malawi between 01/10/2016 and 31/10/2019, as part of the  
42 STRATAA and TyVAC studies. Blood culture isolates from study participants underwent i)  
43 pefloxacin screening and ciprofloxacin E-tests to identify ciprofloxacin non-susceptibility and  
44 ii) whole genome sequencing (WGS) to identify drug resistance mutations and phylogenetic  
45 relationships between non-susceptible and sensitive isolates. We constructed generalised  
46 linear regression models to investigate associations between ciprofloxacin prescription rates  
47 and *S. Typhi* isolates with Quinolone Resistance Determining Region (QRDR) mutations.

48

49 We carried out 11295 blood cultures and microbiologically confirmed 239 cases of typhoid  
50 fever, with isolates from 193 participants sequenced (mean age of participants with  
51 sequenced genomes 12.8 years, 47% male). Between October 2016 and August 2019 2%  
52 (n=4/175) of WGS-confirmed typhoid fever cases were caused by *S. Typhi* with QRDR  
53 mutations, compared with 33% (n=6/18) in September and October 2019. Nine of the ten *S.*  
54 *Typhi* with QRDR mutations had a decreased ciprofloxacin susceptibility phenotype. Every  
55 additional prescription of ciprofloxacin given to study participants in the preceding month

56 was associated with a 4.2% increase in the relative risk of isolating *S. Typhi* with a QRDR  
57 mutation (95% CI, 1.8-7.0%, p=0.0008). Phylogenetic analysis showed that *S. Typhi* isolates  
58 with QRDR mutations in September/October 2019 belonged to two distinct sub-clades  
59 encoding two different QRDR mutations, and were closely related (0-6 SNPs) to susceptible  
60 *S. Typhi* endemic to Blantyre.

61

62 We have shown a close temporal association between empiric antimicrobial usage with an  
63 increase of fluoroquinolone non-susceptibility in *S. Typhi*, with two sub-clades responsible  
64 for the increase. Decreasing ciprofloxacin usage by improving typhoid diagnostics could help  
65 to limit the emergence of resistance.

66

67

## 68 Intro

69 *Salmonella enterica* subspecies *enterica* serovar Typhi is the causative agent of typhoid  
70 fever, a systemic infectious disease. Globally, in 2017 there were an estimated 10.9 million  
71 cases of typhoid fever (95% confidence interval [CI]: 9.3-12.6 million), resulting in 116,800  
72 deaths (95% CI: 65,400 – 187,700), mainly in countries in South and Southeast Asia and Sub-  
73 Saharan Africa (Stanaway et al. 2019).

74

75 Drug resistance is a major problem in *S. Typhi* infection, leading to worse outcomes for  
76 patients and having substantial implications for overstretched health systems in low-and  
77 middle income countries (Kaljee et al. 2018). At least 75% of *S. Typhi* in Africa has been  
78 identified to be multidrug-resistant (MDR, with resistance to first-line antibiotics including:  
79 ampicillin, chloramphenicol, and co-trimoxazole) (Zaki and Karande 2011). The MDR  
80 phenotype was associated with the emergence of the H58 lineage in South and Southeast  
81 Asia and East and Southern Africa (Wong et al. 2015; Pragasam et al. 2020; Feasey et al.  
82 2015; Kariuki et al. 2010).

83

84 *Salmonella* that are resistant to fluoroquinolones (e.g. ciprofloxacin) are amongst the World  
85 Health Organization's (WHO) priority drug-resistant pathogens ('WHO Publishes List of  
86 Bacteria for Which New Antibiotics Are Urgently Needed' 2017). Changes in the  
87 susceptibility of *S. Typhi* to ciprofloxacin are primarily mediated through one of two  
88 mechanisms. Firstly, non-synonymous mutations in the quinolone resistance determining  
89 regions (QRDR) of DNA gyrase and DNA topoisomerase IV subunits encoded by genes *gyrA*,  
90 *gyrB*, *parC* and *parE* (Hopkins, Davies, and Threlfall 2005; Cuypers et al. 2018). Secondly,

91 plasmid mediated quinolone resistance (PMQR) which occurs when an organism acquires a  
92 plasmid encoding proteins that provide physical protection from the quinolones; enzymes  
93 that modify quinolones; or efflux pumps. In Asia, decreased ciprofloxacin susceptibility (DCS,  
94 defined as a ciprofloxacin minimum inhibitory concentration [MIC]  $>0.06$  and  $<1 \mu\text{g}/\mu\text{l}$ ) *S.*  
95 *Typhi* accounted for more than 60% of typhoid cases in Asia in 2011-15, which has led to the  
96 adoption of azithromycin and third generation cephalosporins as the first line therapy for  
97 typhoid fever in this region (Britto et al. 2018). In the African region, the proportion of *S.*  
98 *Typhi* cases with DCS is below 20% (Britto et al. 2018), although there is substantial variation  
99 between countries (Park et al. 2018; Mutai et al. 2018; Kariuki et al. 2021; Ochieng et al.  
100 2022; Acheampong et al. 2019; Al-Emran et al. 2016; Lunguya et al. 2012; Smith et al. 2010).  
101 In Zimbabwe, the proportion of *S. Typhi* referred to the national reference lab that were  
102 resistant to ciprofloxacin increased from 4% to 22% between 2012 and 2017 (Mashe et al.  
103 2019), while a large outbreak of typhoid fever in Harare showed ciprofloxacin resistance  
104 rates of 33% amongst hospitalised patients (N'cho et al. 2019). WGS showed that the  
105 ciprofloxacin non-susceptibility/resistance was due to PMQR, in some cases combined with  
106 QRDR mutations (Mashe et al. 2021).  
107  
108 In Malawi, an enhanced passive surveillance study in the Ndirande urban township area of  
109 the city of Blantyre found an adjusted typhoid incidence of 444 (95% CI 347-717) cases per  
110 100,000 person-years (Meiring et al. 2021). Ninety-two per cent of the *S. Typhi* isolated in  
111 this surveillance study were MDR, but only 0.9% of isolates had DCS (Meiring et al. 2021).  
112 These findings are consistent with a previous report from a hospital cohort in which 0/176  
113 DCS *S. Typhi* were identified (Feasey et al. 2015).

114

115   Against a background of a low rate of ciprofloxacin non-susceptibility in *S. Typhi* in Malawi,  
116   we investigated the genomic and epidemiological features of a cluster of *S. Typhi* with QRDR  
117   mutations isolated from Blantyre, Malawi in September and October 2019.

118

## 119 Methods

### 120 Setting

121 Participants were enrolled either from the community-based primary health centres in  
122 Ndirande or Zingwangwa townships (between October 2016-October 2019) or Queen  
123 Elizabeth Central Hospital (QECH, [between January 2019 and January 2022]), in Blantyre,  
124 Malawi (Darton et al. 2017; Meiring et al. 2019). Ndirande township is an informal urban  
125 settlement with a population of around 100,000 people. Population density is around  
126 15,000 people per km<sup>2</sup>, and approximately 85% of residents drink water from shallow wells,  
127 rain water, or boreholes, with small numbers having access to municipal water supplies  
128 (Kamanula, Zambasa, and Masamba 2014). Zingwanga is a similar setting to Ndirande.  
129 QECH, the largest government hospital in Malawi, has 1350 beds and provides free  
130 secondary and tertiary healthcare to the approximately 1.3 million residents of Blantyre  
131 District and acts as a tertiary referral centre for the Southern Region of Malawi. It admits  
132 approximately 10,000 adult and 25,000 paediatric patients per year.

### 133 Sampling

134 Participants who contributed bacterial isolates for this study were recruited from two main  
135 sources. Firstly, the routine blood culture service provided to QECH by the Malawi-  
136 Liverpool-Wellcome Programme (MLW). This service is provided for admitted adults (>16  
137 years old) with axillary temperature over 37.5°C or clinical suspicion of sepsis, and for  
138 children (<16 years old) who were malaria slide negative, or malaria slide positive and  
139 critically ill, or with clinical suspicion of sepsis. We included all *S. Typhi* isolates obtained by



140 this service from January 2019 to January 2022 for which pefloxacin disk diffusion  
141 susceptibility testing results were available.  
142  
143 Secondly, the Strategic Typhoid Alliance Across Africa & Asia (STRATAA) and Typhoid  
144 Vaccine Acceleration Consortium (TyVAC) studies, the detailed methods of which have been  
145 previously published (Darton et al. 2017; Meiring et al. 2019; 2021). Briefly, individuals who  
146 were resident in the demarcated geographical area for the STRATAA study (i.e. Ndirande  
147 township) or had been enrolled into the TyVAC trial and received a study vaccine were  
148 encouraged to present to one of the study facilities when they developed a fever. The  
149 STRATAA study enrolled participants from a demographic census of 102,242 individuals in  
150 Ndirande township (Meiring et al. 2021) whilst the TyVAC trial enrolled and vaccinated  
151 28,130 children from within the Ndirande and Zingwangwa townships (Patel et al. 2021). A  
152 schematic diagram outlining the relationship between the STRATAA and TyVAC cohorts can  
153 be seen in Supplementary Figure 1. Participants who received either the candidate or  
154 placebo vaccine from the TyVAC trial, or participants from the censused areas (STRATAA  
155 study) who presented to a study passive surveillance site and reported a history of fever for  
156  $\geq 72$  hours or had a measured axillary temperature of  $\geq 38.0^{\circ}\text{C}$ , were recruited by members  
157 of the passive surveillance study team.  
158  
159 Participants had clinical data collected along with 3-5 ml of blood for microbiological  
160 culture. Microbiological culture of blood from all sites/studies was performed at the MLW  
161 laboratory on all collected samples with an automated system (BD BACTEC Blood Culture  
162 System [Becton-Dickinson, Franklin Lakes, NJ, USA] or BacT/ALERT [BioMerieux, Marcy-

163 l'Étoile, France]) after collection of a single aerobic bottle. This study includes participants  
164 from STRATAA or TyVAC recruited between 01/10/2016 and 31/10/2019. Participants were  
165 provided with standard of care clinical management at the health centres, with the  
166 additional benefit of receiving a diagnostic blood culture. If required, participants were  
167 referred to QECH for inpatient care. If participants were blood-culture positive, they were  
168 contacted by the clinical team to ensure they remained well and were on the correct  
169 antimicrobial therapy. All enrolled participants had antimicrobial usage for the two weeks  
170 prior to enrollment and antimicrobial prescriptions on the day of enrollment recorded in the  
171 electronic case record form.

## 172 [Microbiology & molecular biology](#)

173 The pefloxacin disk diffusion method was used to detect isolates with altered susceptibility  
174 to fluoroquinolones according to the European Committee on Antimicrobial Susceptibility  
175 Testing (EUCAST) guidelines. Isolates were cultured on Mueller-Hinton agar with a 5 µg  
176 pefloxacin disk, any isolate with a zone of inhibition less than 24mm was considered to be  
177 resistant and the ciprofloxacin phenotype determined by E-test. Ciprofloxacin E-tests were  
178 performed on Mueller-Hinton agar according to the manufacturer's instructions  
179 (BioMerieux, Marcy-l'Étoile, France), isolates with an MIC of >0.06-1 µg were considered to  
180 have decreased ciprofloxacin susceptibility, isolates with an MIC >1 µg were considered to  
181 be resistant (Hassing et al. 2013). Isolates were cultured overnight and genomic DNA was  
182 extracted using the Wizard Genomic DNA Extraction Kit following the manufacturer's  
183 recommendations (Promega, WI, USA). Genomic DNA was shipped to the Wellcome Sanger  
184 Institute for indexed whole genome sequencing on an Illumina HiSeq 2500 platform to  
185 generate paired-end reads of 100 bp in length. A subset of genome sequences from

186 participants enrolled in STRATAA between October 2016 and August 2019 have been  
187 reported in the multi-site analysis for that study (Dyson et al. 2023).

## 188 Bioinformatics

189 Sequencing data were trimmed using bbduk v38.96 ('BBMap' n.d.) in order to remove  
190 adapters and low-quality sequencing regions `bbduk.sh ref=adapters.fa in=R1.fastq  
191 in2=R2.fastq out=R1.trimmed.fastq.gz out2=R2.trimmed.fastq.gz ktrim=r k=23 mink=11  
192 hdist=1 tbo tpe qtrim=r trimq=20 minlength=50`. Trimmed FASTQs were analysed with  
193 mykrobe v0.10.0 using the docker image `flashton/mykrobe\_for\_typhi:latest` and the  
194 GenoTyphi panel i.e. `--species typhi` (Bradley et al. 2015; Dyson and Holt 2021) to identify  
195 the sub-clade of *S. Typhi*. Antimicrobial resistance genes and mutations were identified  
196 using amr-finder-plus v3.9.8 with the `-O Salmonella` option (Feldgarden et al. 2019).

197

198 Trimmed FASTQs were also mapped against the CT18 reference genome (NCBI accession  
199 AL513382.1) using bwa mem v0.7.17-r1198-dirty (Li 2013). SNPs were called with GATK  
200 version 3.8-1-0-gf15c1c3ef in unified genotyper mode (Van der Auwera and O'Connor  
201 2020). Positions where the majority allele accounted for < 90% of reads mapped at that  
202 position, which had a genotype quality of <30, depth <5x, or mapping quality <30 were  
203 recorded as Ns in further analyses. A consensus genome was generated for each genome.  
204 These steps were carried out using the PHEnix pipeline [https://github.com/phe-](https://github.com/phe-bioinformatics/PHEnix)  
205 [bioinformatics/PHEnix](https://github.com/phe-bioinformatics/PHEnix). Maximum likelihood phylogenies were then created using IQ-TREE  
206 v1.6.12 with in-built model selection (Minh et al. 2020; Kalyaanamoorthy et al. 2017).  
207 Phylogenetic trees were annotated using iTOL (Letunic and Bork 2019).

## 208 Statistical analysis

209 To investigate the association between the proportion of total sequencing-confirmed  
210 typhoid fever cases with QRDR mutations and the total number of ciprofloxacin  
211 prescriptions in the preceding month, we constructed a generalised linear regression model  
212 with a binomial distribution. Analysis was done in R version 4.1.0 and links to a Github  
213 repository containing R code to reproduce the all analyses is available in the Data  
214 Availability section of the manuscript.

215 Equation 1:

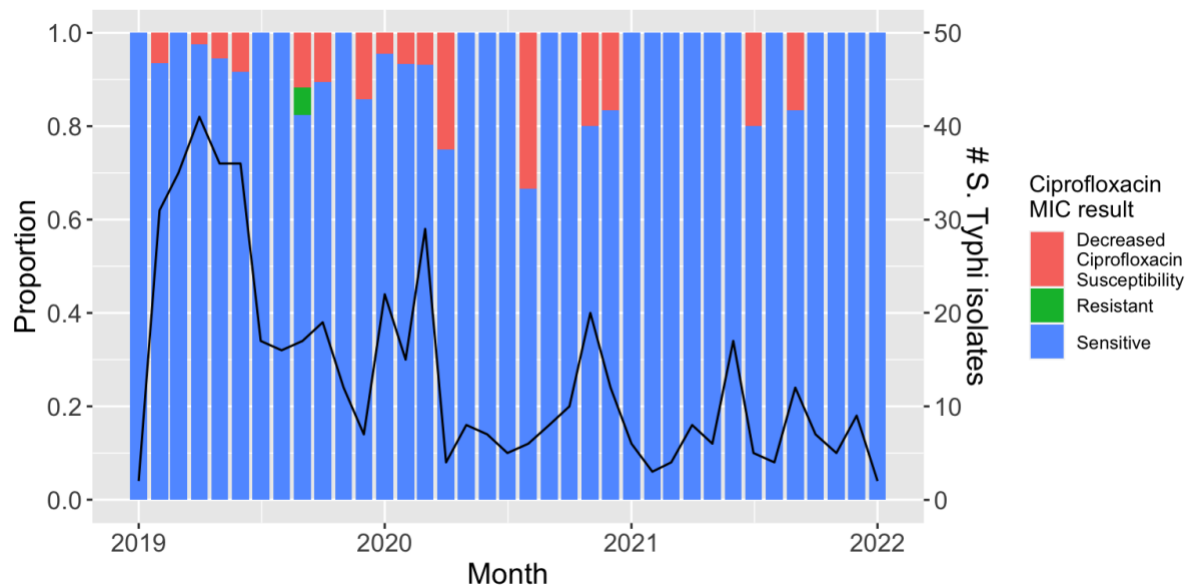
$$216 \quad g(E[Y|X]) = \beta_0 + \beta_1 X$$

217 where Y is a binomial random variable recording the QRDR typhoid status for a given  
218 sample, X is recording the total number of ciprofloxacin prescriptions in the preceding  
219 month and g is the logit function, i.e.  $g(x) = \log\left(\frac{x}{1-x}\right)$ .

## 220 Results

### 221 Ciprofloxacin susceptibility *S. Typhi* in Blantyre

222 We screened 503 *S. Typhi* isolated from patients presenting at QECH between January 2019  
223 and January 2022 for resistance to pefloxacin and identified 37 isolates (7%) that were  
224 resistant (Figure 1). Following confirmatory ciprofloxacin E-tests, 30 isolates (6% of total)  
225 had either decreased ciprofloxacin susceptibility (n = 29) or ciprofloxacin resistance (n = 1).



226  
227 Figure 1: The proportion of *S. Typhi* isolated from QECH that have a sensitive, decreased  
228 ciprofloxacin susceptibility, or ciprofloxacin resistant phenotype per month. The total  
229 number of *S. Typhi* isolated from QECH is plotted as a black line.

230

231 [An increase in the proportion of \*S. Typhi\* with QRDR mutations was associated with](#)  
232 [an increase in ciprofloxacin prescriptions](#)

233 Between 1<sup>st</sup> October 2016 and 31<sup>st</sup> October 2019, we carried out enhanced passive  
234 surveillance for *S. Typhi* at the Ndirande and Zingwangwa Health Centres, identifying a total  
235 of 242 *S. Typhi* isolates from 239 patients (Supplementary Figure 2). Primary results from  
236 sequencing of isolates obtained as part of the STRATAA study between October 2016 and  
237 August 2019 are reported elsewhere (Dyson et al. 2023), here we report a combined  
238 analysis of the 141 Malawian genomes from Dyson et al., 2023 and 55 novel genomes from  
239 52 patients, extending coverage of genomic surveillance to October 2019. In total, from  
240 patients recruited between October 2016 and October 2019, we sequenced 196/242 *S.*  
241 *Typhi* from 193/239 patients (Supplementary Figure 2, Supplementary Figure 3) and

242 identified *S. Typhi* from 10 patients with non-synonymous mutations in the quinolone  
243 resistance determining regions (QRDR, Figure 2).

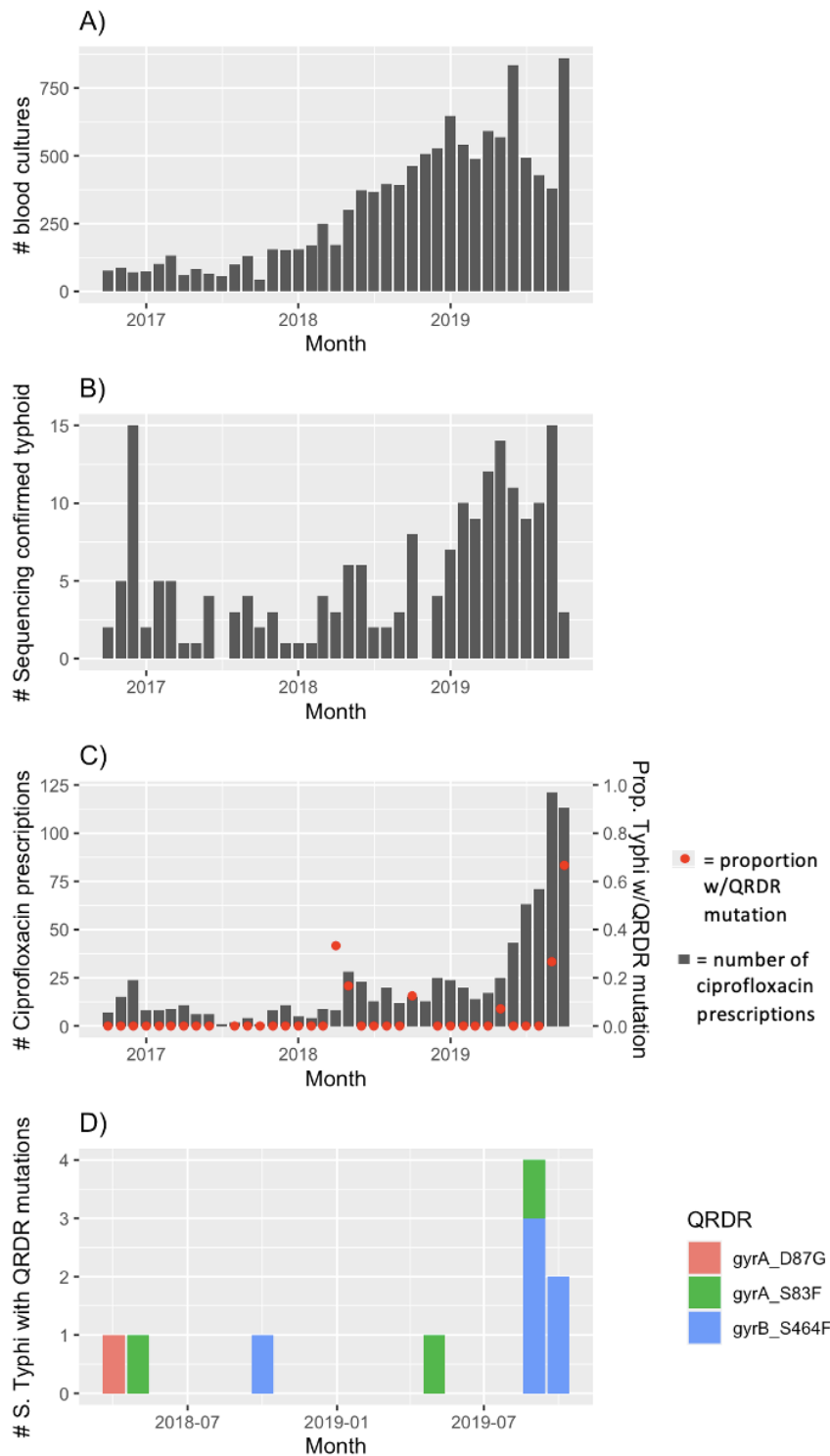
244

245 In the first half of 2019, there was an increase in MDR typhoid fever. Between October 2016  
246 and December 2018 there was a median of three sequencing-confirmed cases of typhoid  
247 fever per month, increasing to a median of 10 cases between January and October 2019  
248 (Figure 2B). Following this increase in MDR typhoid, the number of ciprofloxacin  
249 prescriptions increased in the second half of 2019, from a median of 11 (range = 1-28)  
250 monthly prescriptions between October 2016 and May 2019 to 71 (range = 43-121) monthly  
251 prescriptions between June-October 2019 (Figure 2C). Not long after the increase in  
252 ciprofloxacin prescriptions, we noted an increase in DCS *S. Typhi*; between October 2016  
253 and August 2019, 4/175 (2%) cases of typhoid fever were caused by *S. Typhi* with QRDR  
254 mutations while in September and October 2019, 6/18 (33%) cases of typhoid fever were  
255 caused by *S. Typhi* with QRDR mutations (Fisher's exact test  $P= 4.679 \times 10^{-5}$ , Figure 2C). No  
256 other antibiotic had prescription trends that were similar to those of ciprofloxacin  
257 (Supplementary Figure 4).

258

259 Between September 2016 and August 2019 three different QRDR mutations were identified:  
260 GyrA S83F (n = 2), GyrA D87G (n = 1), and GyrB S464F (n = 1), while during September and  
261 October 2019, there were two different mutations identified - GyrB S464F (n = 5) and GyrA  
262 S83F (n = 1) (Figure 2D). Nine of the ten samples with QRDR mutations had a decreased  
263 ciprofloxacin susceptibility phenotype.

264



265

266

267

268

269

270

Figure 2: Results of enhanced passive surveillance at Ndirande and Zingwangwa Health Centres A) the total number of blood cultures taken from eligible participants B) Total sequencing confirmed typhoid cases C) the number of ciprofloxacin prescriptions (grey bars) and the proportion of sequencing confirmed *S. Typhi* with QRDR mutations D) the frequency of *S. Typhi* with QRDR mutations, coloured by the QRDR mutation identified.

271 Regression modelling showed that each additional prescription of ciprofloxacin given to  
272 STRATAA and TyVAC participants was associated with a 4.2% increase in the relative risk of  
273 isolating *S. Typhi* with a QRDR mutation in the subsequent month (95% CI 1.8-7.0%, P =  
274 0.0008, Table 1). The number of blood cultures taken was not significantly associated with  
275 the number of *S. Typhi* with QRDR mutations isolated in that month (OR = 1.00, 95% CI 1.00-  
276 1.00, P = 0.22).

277

278 Table 1: Results of epidemiological modelling to test the hypothesis that the proportion of *S.*  
279 *Typhi* isolated that had QRDR mutations were associated with the number of ciprofloxacin  
280 prescriptions in the preceding month. Model estimates have been exponentiated to yield  
281 odds ratios associated with lagged prescriptions.

282

<i>Predictors</i>	<i>Odds Ratios</i>	<i>CI</i>	<i>p</i>
Total number of ciprofloxacin prescriptions in preceding month	1.04	1.02 – 1.06	0.0008
Total number of blood cultures	1.00	1.00-1.00	0.224

283



284 DCS *S. Typhi* isolated at Ndirande Health Centre in October-November 2019 formed  
285 two phylogenetically distinct groups and encoded two different QRDR mutations  
286 We carried out a phylogenetic analysis of the 187 *S. Typhi* from different patients reported  
287 here, combined with 112 *S. Typhi* from Blantyre from previously published work (Feasey et  
288 al. 2015) (Figure 3). Five of the six *S. Typhi* isolates from Ndirande in Sept/Oct 2019 formed a  
289 subclade of near-identical isolates (median SNP pairwise distance = 0 SNPs) that shared the  
290 GyrB-S464F amino acid substitution. The sixth isolate was unrelated to the other 5 and  
291 encoded a GyrA-S83F amino acid substitution; its closest phylogenetic neighbour (4 SNPs)  
292 was from Ndirande Health Centre isolated in May 2019 that also encoded a GyrA S83F  
293 amino acid substitution.

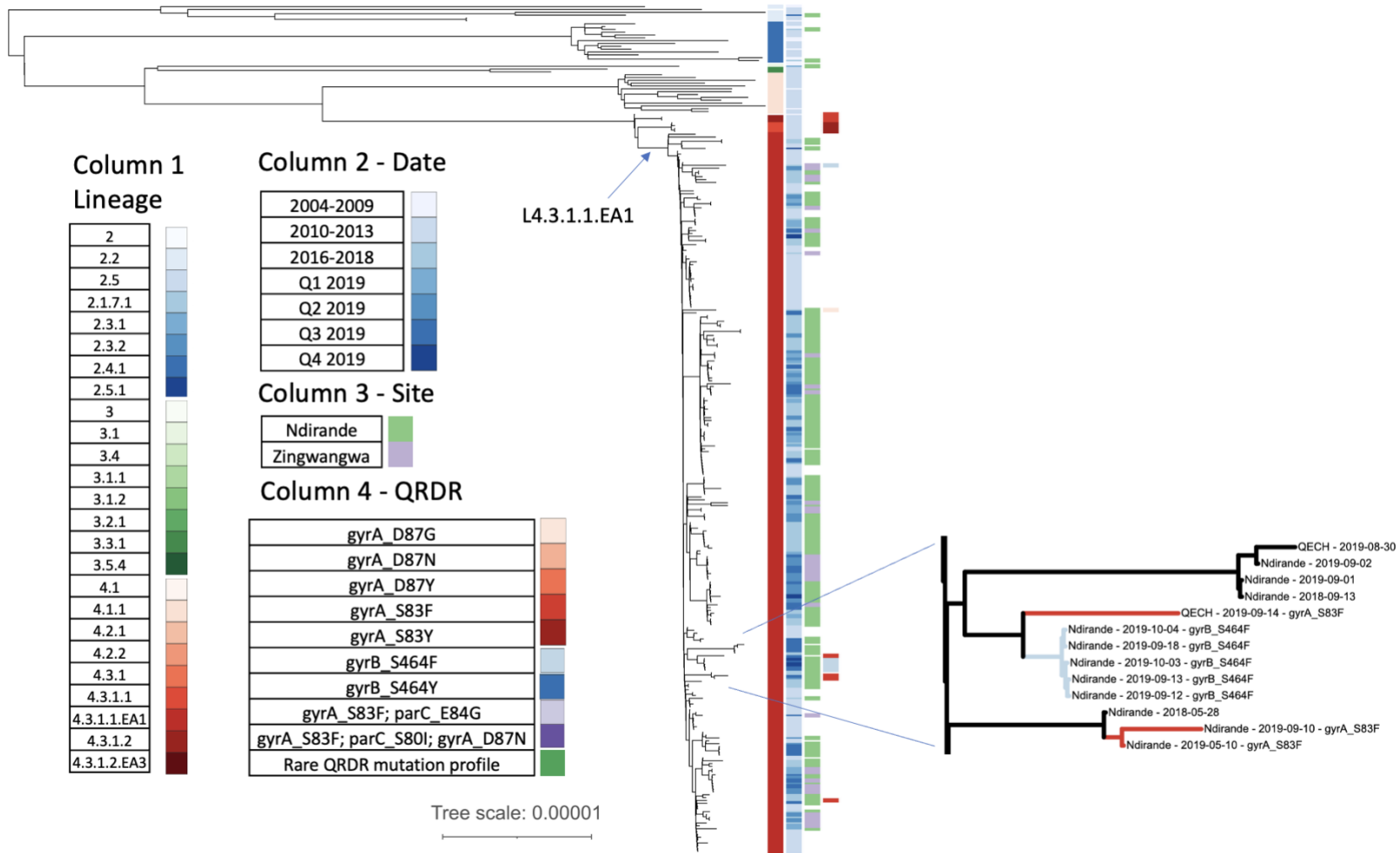


Figure 3: Phylogenetic tree of 299 *S. Typhi* from Blantyre (one genome per patient). The tree branches of the inset are coloured according to the QRDR mutation observed descending from that branch, the colour is the same as for column 4.

## DCS *S. Typhi* from Ndirande Health Centre was not the result of importation from outside Malawi

To investigate the hypothesis that the *S. Typhi* with QRDR mutations were imported from outside Blantyre, we derived a maximum likelihood phylogenetic tree of 299 Malawian genomes alongside an additional 1970 non-Malawian *S. Typhi* genomes from published studies. As the sub-clades of interest all belonged to H58, we present a sub-tree of 1168 H58 genomes (Figure 4) (Wong et al. 2015; Park et al. 2018; Mashe et al. 2021). Eighty-five per cent of Malawian genomes formed a paraphyletic clade belonging to L4.3.1.1.EA1 which also included 27 genomes from Zimbabwe, 4 genomes from South Africa, and 1 genome from an unspecified African country. The Zimbabwean genomes included isolates encoding both the QnrS1 plasmid-mediated quinolone resistance (PMQR) protein and QRDR mutations. An additional maximum likelihood phylogeny was constructed focussing on this sub-clade (Figure 5), which confirmed that the 27 Zimbabwean genomes formed a monophyletic clade and that no transmission of *S. Typhi* with QRDR mutations between Zimbabwe and Malawi was identified in this dataset. The most closely related genomes to the Blantyre *S. Typhi* with QRDR mutations were QRDR mutation negative *S. Typhi* from Blantyre.

### Ring 1 - Lineage

4.1	
4.1.1	
4.2.1	
4.2.2	
4.3.1	
4.3.1.1	
4.3.1.1.EA1	
4.3.1.2	
4.3.1.2.EA3	

### Ring 2 Geography

	Africa
	North Africa
	Southern Africa
	West Africa
	Central Africa
	East Africa
	Malawi
	Asia
	Europe
	North America
	Oceania
	South America

### Ring 3 - Study

Malawi - this study	
Malawi - previous studies	
Zimbabwe	

### Ring 4 - QRDR

gyrA_D87G	
gyrA_D87N	
gyrA_D87Y	
gyrA_S83F	
gyrA_S83Y	
gyrB_S464F	
gyrB_S464Y	
gyrA_S83F; parC_E84G	
gyrA_S83F; parC_S80I; gyrA_D87N	
Rare QRDR mutation profile	

### Ring 5 - PMQR

qnrS1	
-------	--

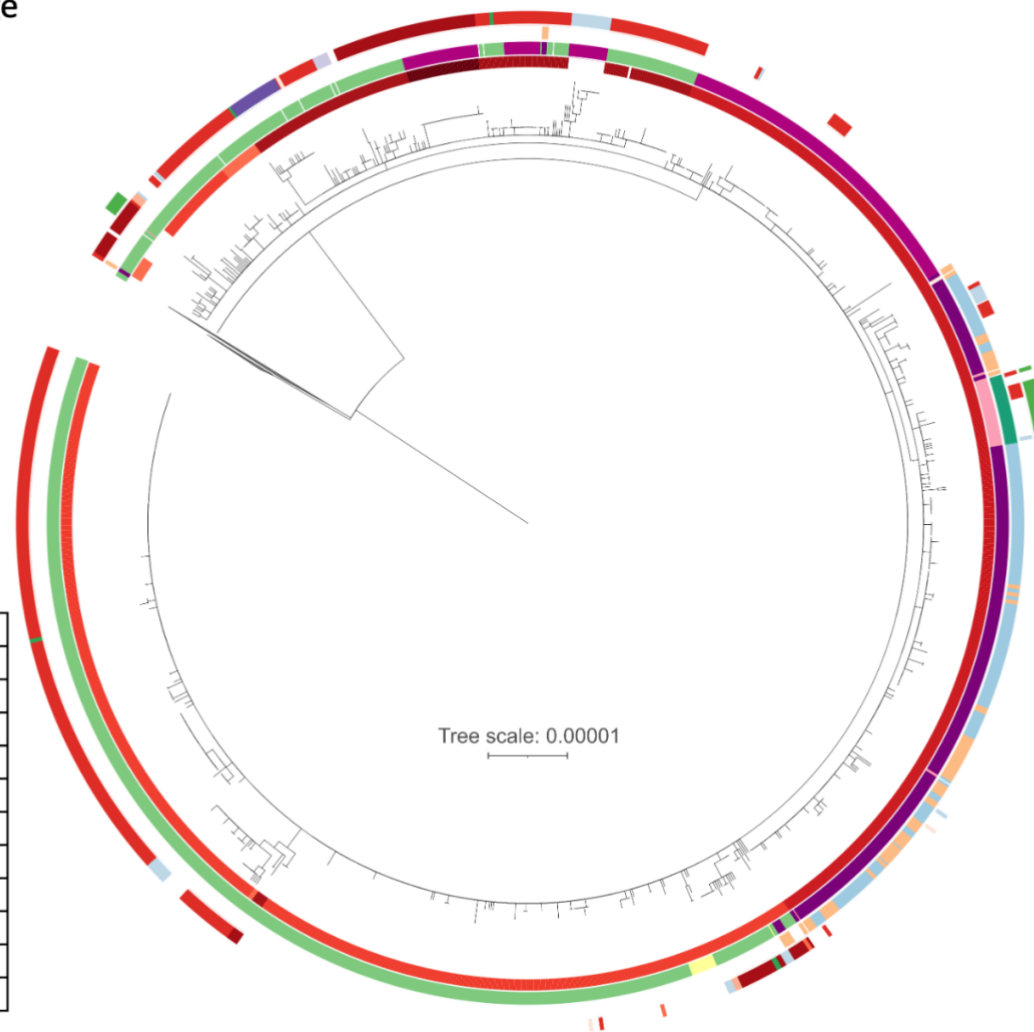


Figure 4: Phylogenetic tree of 1166 H58 S. Typhi genomes, placing those from Blantyre in the global context of other H58 samples

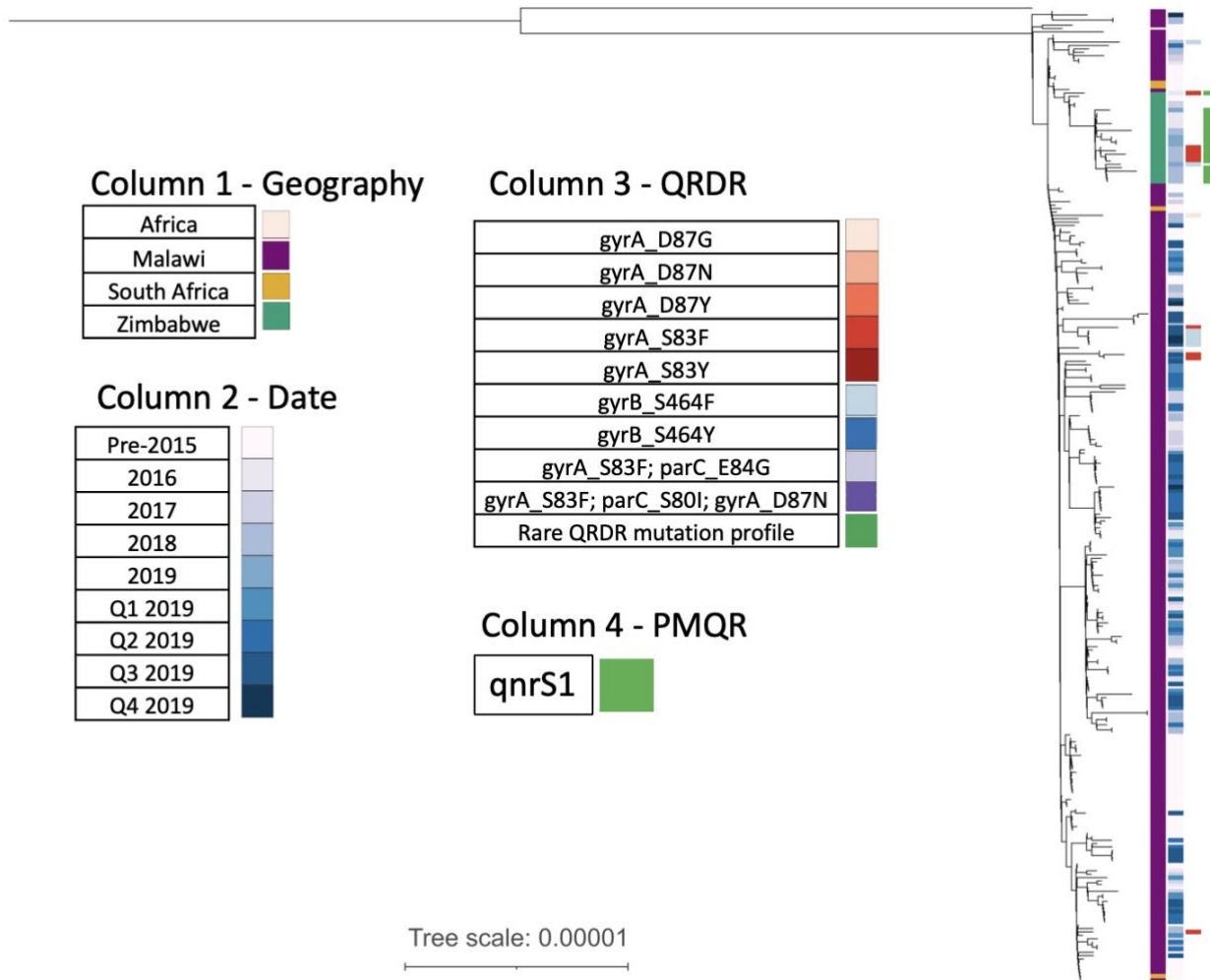


Figure 5: A phylogenetic tree of 286 genomes from the Malawian and Zimbabwean sub-clade. This clearly shows that the ciprofloxacin-resistant and DCS Typhi from Zimbabwe were genetically distinct from the Malawian DCS Typhi

## Discussion

### Statement of principal findings

We found a significant positive association between the proportion of *S. Typhi* encoding QRDR mutations and the number of courses of ciprofloxacin prescribed in the preceding month within a vaccine and epidemiological surveillance study in Blantyre, Malawi. Genomic evidence revealed that *S. Typhi* with QRDR mutations from Sept-Oct 2019 belonged to two different lineages, decreasing the probability of this association being driven by a stochastic event. Furthermore, placing our genomes into a broader genomic context revealed that the genomes most closely related to our DCS *S. Typhi* were ciprofloxacin-susceptible *S. Typhi* from Blantyre, and hence not the result of an introduction from another country.

### Strengths and weaknesses of the study

In our setting (district health centres in Blantyre, Malawi), clinical microbiology testing is not routinely available, and prescription information is not systematically captured. This is the case for most primary healthcare systems in countries in Sub-Saharan Africa, which is reflected in the paucity of primary literature on the association between antibiotic usage and antibiotic resistance in the region (Dromigny et al. 2005). Therefore, this study offered the valuable opportunity to identify and quantify factors associated with the occurrence of a WHO high-priority pathogen, fluoroquinolone-resistant *Salmonellae* in a setting with a high burden of typhoid fever ('WHO Publishes List of Bacteria for Which New Antibiotics Are Urgently Needed' 2017).

The use of genomics strengthened our analysis in multiple ways. Firstly, it enabled the highly reproducible identification of *S. Typhi* carrying QRDR mutations. Secondly, it enabled us to place our *S. Typhi* with QRDR mutations into the context of collections of *S. Typhi* genomes from Blantyre and internationally. This line of evidence revealed that the DCS *S. Typhi* emerged from Blantyre's endemic *S. Typhi* population, rather than being imported from another country. Finally, it enabled us to identify that the *S. Typhi* with QRDR mutations identified in September and October 2019 belonged to two separate sub-clades with different QRDR mutations. While identifying two separate phylogenetic clades with QRDR mutations decreases the probability of the cluster resulting from a point-source outbreak, 5 of the 6 *S. Typhi* with QRDR mutations were monophyletic and very closely related (median pairwise distance was 0 SNPs). However, this is difficult to interpret for *S. Typhi*, where isolates obtained years apart and across wide geographic spans can be 0 SNPs distant (Dyson et al. 2023).

With our ecological study design (i.e. we looked at population-level emergence of resistance associated with AMU, not individual-level emergence), we cannot definitively prove causality in the relationship between ciprofloxacin use and QRDR emergence. However, it is worthwhile to consider the plausibility of forward causality (i.e. an increase in ciprofloxacin prescriptions caused more *S. Typhi* with QRDR mutations) and reverse causality (i.e. an increase in *S. Typhi* with QRDR mutations caused more ciprofloxacin prescriptions). Forward causality is biologically plausible and the ciprofloxacin prescriptions given in the prior month were significantly associated with the proportion of *S. Typhi* with QRDR mutations, a temporal relationship which supports the forward causal relationship. Reverse causality

could plausibly occur when prescriptions are made with reference to local AMR trends, but it is not plausible that the response to an increase in DCS *S. Typhi* would be to increase ciprofloxacin prescriptions. Therefore, the forward causal relationship seems the most likely explanation, although there may be sources of bias that have not been accounted for (e.g. ciprofloxacin usage outside the study). Another disadvantage of the ecological study design is that we did not observe the emergence of resistance in patients treated with ciprofloxacin because samples were taken for blood culture before the prescribed antibiotics were taken, although it is unclear whether we would have observed that as drug resistance in *S. Typhi* may be due to the bystander effect (Morley, Woods, and Read 2019).

The majority of human antibiotic use in Africa is not by prescription from a health worker (Morgan et al. 2011; Auta et al. 2019). Although reports from Malawi suggest that a higher than average 64% of antibiotics are prescribed by health facilities (Dixon et al. 2021), this still leaves a substantial fraction of people who obtain antibiotics informally. As we only captured ciprofloxacin prescriptions given as part of the STRATAA and TyVAC studies, there is the possibility of bias due to the usage of ciprofloxacin outside of our study. However, in terms of informal use, ciprofloxacin is not commonly used as a non-prescription antibiotic in Malawi, with only 2-3.2% of people reporting using oral ciprofloxacin “frequently”, compared with 68% and 36% of people reporting frequent use of cotrimoxazole or amoxicillin respectively (Dixon et al. 2021; MacPherson et al. 2022). In terms of prescribed ciprofloxacin that was not given as part of our study, we have no way of reliably quantifying this either within the areas we were recruiting in, or in Blantyre more broadly.



One major weakness of our study is that we only observed a relatively small number of *S. Typhi* with QRDR mutations, which limits the strength of our findings. There is also no evidence from the hospital-based surveillance (Figure 1) of a broader increase in DCS *S. Typhi*, although interpretation of this is difficult, as the failure of the DCS *S. Typhi* to fix in the population could also be linked to the low level of ciprofloxacin usage in Malawi. Furthermore, there was a decrease in the number of *S. Typhi*-positive blood cultures detected by hospital based surveillance following the emergence of SARS-CoV-2, probably driven by a reduction in hospital attendance because of fear of the virus.

Models were not adjusted for any co-variables because our outcome measure was the proportion of *S. Typhi* that encoded QRDR mutations, and our methodology for identifying these was consistent across the study period. If we had used the number of *S. Typhi* with QRDR mutations then we would also need to take into account the number of blood cultures carried out and the subtly different sampling frames of the two studies.

### [Our findings in relation to other studies](#)

Our modelling revealed a significant positive association between ciprofloxacin prescriptions and the proportion of *S. Typhi* with QRDR mutations in the following month. This short lag time is in line with what other studies have found for the relationship between ciprofloxacin prescriptions and fluoroquinolone resistance (Vernaz et al. 2011; Sun et al. 2022; Gottesman et al. 2009). However, much of the work in the literature other work has been done for *E. coli* rather than *Salmonella* infections, so we cannot be certain of its relevance.

Uncontrolled usage of antibiotics has long been blamed for the emergence of resistance to fluoroquinolones and other antibiotics in *S. Typhi* in high infectious disease burden settings (Britto et al. 2018; Wain et al. 1997), but empirical demonstrations of this relationship have been lacking. However, there have been many demonstrations of the association between ciprofloxacin usage and resistance in Enterobacteriaceae in high-income countries - in hospitals (I. Willemsen et al. 2009; Cusini et al. 2018; Batard et al. 2013; Ina Willemsen et al. 2010), communities (Vernaz et al. 2011; Bryce, Costelloe, et al. 2016; MacDougall et al. 2005; Bryce, Hay, et al. 2016; Olesen et al. 2018), and whole countries (van de Sande-Bruinsma et al. 2008). These studies show similar effect sizes to our analysis (e.g. 1% increase in ciprofloxacin prescriptions led to a 0.97% increase in ciprofloxacin-resistant isolates 1 month later (Vernaz et al. 2011)). Studies that showed that fluoroquinolone stewardship interventions reduced either the incidence or the rate of increase of fluoroquinolone resistance demonstrate that this is likely a causal association in some circumstances (Gottesman et al. 2009; Ina Willemsen et al. 2010). Our study contributes to this evidence base by demonstrating the association between prescribed antibiotics and *S. Typhi* with QRDR mutations in a community setting in sub-Saharan Africa, where there are only a limited number of existing studies (Dromigny et al. 2005). However, it is weaker than other studies on this topic because we took an ecological approach, as opposed to demonstrating an individual-level effect (Bryce, Hay, et al. 2016; Bryce, Costelloe, et al. 2016).

## Implications for clinicians and policymakers

We have identified an association between ciprofloxacin usage and the proportion of *S. Typhi* with QRDR mutations. If this relationship is causal, then there are important policy implications.

Only around 1% of febrile patients in Blantyre have typhoid fever (Patel et al. 2021; Meiring et al. 2021). Therefore, very few of the courses of ciprofloxacin prescribed as part of our study were given to people for whom *S. Typhi* was the cause of their fever. There are two niches in which there is likely more *S. Typhi* exposure to ciprofloxacin than in typhoid fever patients. The first niche is in chronic carriers or asymptotically infected people who were treated with ciprofloxacin because of a fever with a non-typhoidal cause. The sero-incidence of *S. Typhi* exposures/infections in Blantyre has been estimated as 43 times higher than the observed incidence (Meiring et al. 2021). We speculate that there are likely to be more people presenting with fever who have *S. Typhi* as an asymptomatic or sub-clinical infection than those for whom *S. Typhi* is the cause of their fever. Furthermore, it is estimated that around 2-5% of the population in endemic regions are chronic carriers of *S. Typhi* (Gunn et al. 2014). This represents a high burden of asymptomatic, sub-clinical, or chronic infections which could be evolving in response to ciprofloxacin given because of fever induced by a different cause. The second niche is in the environment e.g. water sources (Karkey et al. 2016). Between 60-87% of ciprofloxacin administered to people is excreted unmetabolised via the urine or faeces (Girardi et al. 2011). Levels of ciprofloxacin observed in the environment have been shown to inhibit bacterial growth (Girardi et al. 2011). We believe it is possible that the increased number of ciprofloxacin prescriptions would lead to more

contamination of the environment with ciprofloxacin, which could select for QRDR mutations. However, we expect that this indirect route of ciprofloxacin exposure would have a longer lag between ciprofloxacin prescriptions and the emergence of non-susceptibility in the human population than we observed in this study. Regardless of the niche in which the exposure occurred, an accurate point-of-care diagnostic for typhoid fever would help to reduce overall ciprofloxacin usage in Malawi by targeting treatment to people whose fever is caused by *S. Typhi*. We hypothesise that this reduced overall usage would reduce the chance of non-susceptibility emerging.

More direct modification of AMU policies, rather than just better diagnosis leading to fewer prescriptions, is another option that could potentially reduce the emergence of resistance. One AMU policy that could be modified is to increase the dose of ciprofloxacin given, to achieve a “mutant prevention concentration”, although this has not shown promise in the limited empirical studies carried out thus far (Fantin et al. 2009). Another antimicrobial usage policy that could be considered is a switch to combination therapy for suspected typhoid fever (Zmora et al. 2018; Giri et al. 2021), although without improved diagnostics this might just serve to increase the overall antibiotic pressure.

It is notable that in both Zimbabwe and Malawi in the late 2010s, there have been outbreaks of ciprofloxacin non-susceptible *S. Typhi* that emerged from the local population of *S. Typhi*, rather than being imported from another setting (Mashe et al. 2021; Thilliez et al. 2022). The emergence of non-susceptibility due to local AMU practices empowers local stakeholders to advocate for the tools to enable better practices. If the DCS *S. Typhi* were

due to importations, it is very hard to prevent these kinds of events, but non-susceptibility arising in the endemic bacterial population due to local practices can potentially be modified by changes in local practice.

Ultimately, reducing the burden of disease through systemic measures such as the introduction of efficacious vaccines into high-burden settings and WASH interventions are likely to be the most comprehensive solutions to preventing the emergence of DCS *S. Typhi* (Patel et al. 2021; Qadri et al. 2021; Shakya et al. 2021). Indeed, typhoid conjugate vaccines were introduced into Zimbabwe in response to an outbreak of typhoid there in 2018 that included a large proportion of ciprofloxacin non-susceptible isolates ('Stories from the Field: How Vaccines Can Help to Prevent Antibiotic Resistance - Zimbabwe's Response to Drug-Resistant Outbreaks of Typhoid and Cholera' n.d.; Mashe et al. 2021; N'cho et al. 2019).

## Acknowledgements

We would like to acknowledge all the participants in the STRATAA and TyVAC studies for their willingness to participate in this research, and also all the team and consortium members for their contributions. We would like to acknowledge the contribution of Sithembile Bilima and the other members of the MLW Core laboratories staff for their valuable contributions to this work. We thank the Wellcome Sanger Institute core laboratory and pathogen informatics teams for their assistance.

## Consortium members

STRATAA consortium members - Happy Chimphako Banda<sup>1</sup>, Prasanta Kumar Biswas<sup>2</sup>, Md. Amiruli Islam Bhuiyan<sup>2</sup>, Christoph Blohmke<sup>3</sup>, Thomas C. Darton<sup>3</sup>, Christiane Dolecek<sup>4</sup>, Sabina Dongol<sup>5</sup>, Yama Farooq<sup>3</sup>, Jennifer Hill<sup>3</sup>, Nhu Tran Hoang<sup>6</sup>, Tikhala Makhaza Jere<sup>1</sup>, Maurice Mbewe<sup>1</sup>, Harrison Msuku<sup>1</sup>, Tran Vu Thieu Nga<sup>6</sup>, Rose Nkhata<sup>1</sup>, Sadia Isfat Ara Rahman<sup>2</sup>, Nazia Rahman<sup>2</sup>, Neil J. Saad<sup>7</sup>, Trinh Van Tan<sup>6</sup>, Deus Thindwa<sup>1</sup>, Merryn Voysey<sup>3</sup>, Richard Wachepa<sup>1</sup>

### **Affiliations:**

1 Malawi-Liverpool Wellcome Programme, Blantyre, Malawi

2 International Centre for Diarrhoeal Disease Research, Dhaka, Bangladesh

3 Oxford Vaccine Group, Department of Paediatrics, University of Oxford, and the NIHR Oxford Biomedical Research Centre, Oxford, United Kingdom

4 Nuffield Department of Medicine, Centre for Tropical Medicine and Global Health, University of Oxford, Oxford, UK

5 Oxford University Clinical Research Unit, Patan Academy of Health Sciences, Kathmandu, Nepal

6 The Hospital for Tropical Diseases, Wellcome Trust Major Overseas Programme,  
Oxford University Clinical Research Unit, Ho Chi Minh City, Vietnam

7 Department of Epidemiology of Microbial Diseases and the Public Health Modeling  
Unit, Yale School of Public Health, Yale University, New Haven, CT, USA

## Data availability

Phylogenetic trees and annotation files are available from FigShare at the following link

[https://figshare.com/projects/Fluoroquinolone\\_resistance\\_Salmonella\\_Typhi\\_in\\_Blantyre](https://figshare.com/projects/Fluoroquinolone_resistance_Salmonella_Typhi_in_Blantyre_Malawi/157785)

[Malawi/157785](https://figshare.com/projects/Fluoroquinolone_resistance_Salmonella_Typhi_in_Blantyre_Malawi/157785). Code to reproduce the statistical analysis and generate the plots can be

accessed from [https://github.com/flashton2003/blantyre\\_qrdr\\_typhi](https://github.com/flashton2003/blantyre_qrdr_typhi). Genome accessions

are available in Supplementary Table 1.

## References

- Acheampong, Godfred, Michael Owusu, Alex Owusu-Ofori, Isaac Osei, Nimako Sarpong, Augustina Sylverken, Hung-Jui Kung, et al. 2019. 'Chromosomal and Plasmid-Mediated Fluoroquinolone Resistance in Human Salmonella Enterica Infection in Ghana'. *BMC Infectious Diseases* 19 (1): 898. <https://doi.org/10.1186/s12879-019-4522-1>.
- Al-Emran, Hassan M., Daniel Eibach, Ralf Krumkamp, Mohammad Ali, Stephen Baker, Holly M. Biggs, Morten Bjerregaard-Andersen, et al. 2016. 'A Multicountry Molecular Analysis of Salmonella Enterica Serovar Typhi With Reduced Susceptibility to Ciprofloxacin in Sub-Saharan Africa'. *Clinical Infectious Diseases: An Official Publication of the Infectious Diseases Society of America* 62 Suppl 1 (March): S42-46. <https://doi.org/10.1093/cid/civ788>.
- Auta, Asa, Muhammad Abdul Hadi, Enoche Oga, Emmanuel O. Adewuyi, Samirah N. Abdu-Aguye, Davies Adeloye, Barry Strickland-Hodge, and Daniel J. Morgan. 2019. 'Global Access to Antibiotics without Prescription in Community Pharmacies: A Systematic Review and Meta-Analysis'. *Journal of Infection* 78 (1): 8–18. <https://doi.org/10.1016/j.jinf.2018.07.001>.
- Batard, Eric, Florence Ollivier, David Boutoille, Jean-Benoît Hardouin, Emmanuel Montassier, Jocelyne Caillon, and Françoise Ballereau. 2013. 'Relationship between Hospital Antibiotic Use and Quinolone Resistance in Escherichia Coli'. *International Journal of Infectious Diseases* 17 (4): e254–58. <https://doi.org/10.1016/j.ijid.2012.10.005>.
- 'BBMap'. n.d. SourceForge. Accessed 23 July 2022.

- <https://sourceforge.net/projects/bbmap/>.
- Bradley, Phelim, N. Claire Gordon, Timothy M. Walker, Laura Dunn, Simon Heys, Bill Huang, Sarah Earle, et al. 2015. 'Rapid Antibiotic-Resistance Predictions from Genome Sequence Data for Staphylococcus Aureus and Mycobacterium Tuberculosis'. *Nature Communications* 6 (1). <https://doi.org/10.1038/ncomms10063>.
- Britto, Carl D., Vanessa K. Wong, Gordan Dougan, and Andrew J. Pollard. 2018. 'A Systematic Review of Antimicrobial Resistance in Salmonella Enterica Serovar Typhi, the Etiological Agent of Typhoid'. *PLoS Neglected Tropical Diseases* 12 (10): e0006779. <https://doi.org/10.1371/journal.pntd.0006779>.
- Bryce, Ashley, Céire Costelloe, Claire Hawcroft, Mandy Wootton, and Alastair D. Hay. 2016. 'Faecal Carriage of Antibiotic Resistant Escherichia Coli in Asymptomatic Children and Associations with Primary Care Antibiotic Prescribing: A Systematic Review and Meta-Analysis'. *BMC Infectious Diseases* 16 (1): 359. <https://doi.org/10.1186/s12879-016-1697-6>.
- Bryce, Ashley, Alastair D. Hay, Isabel F. Lane, Hannah V. Thornton, Mandy Wootton, and Céire Costelloe. 2016. 'Global Prevalence of Antibiotic Resistance in Paediatric Urinary Tract Infections Caused by Escherichia Coli and Association with Routine Use of Antibiotics in Primary Care: Systematic Review and Meta-Analysis'. *BMJ (Clinical Research Ed.)* 352 (March): i939. <https://doi.org/10.1136/bmj.i939>.
- Cusini, Alexia, David Herren, Lukas Bütikofer, Catherine Plüss-Suard, Andreas Kronenberg, and Jonas Marschall. 2018. 'Intra-Hospital Differences in Antibiotic Use Correlate with Antimicrobial Resistance Rate in Escherichia Coli and Klebsiella Pneumoniae: A Retrospective Observational Study'. *Antimicrobial Resistance and Infection Control* 7: 89. <https://doi.org/10.1186/s13756-018-0387-0>.
- Cuypers, Wim L., Jan Jacobs, Vanessa Wong, Elizabeth J. Klemm, Stijn Deborggraeve, and Sandra YR 2018 Van Puyvelde. 2018. 'Fluoroquinolone Resistance in Salmonella: Insights by Whole-Genome Sequencing'. *Microbial Genomics* 4 (7): e000195. <https://doi.org/10.1099/mgen.0.000195>.
- Darton, Thomas C, James E Meiring, Susan Tonks, Md Arifuzzaman Khan, Farhana Khanam, Mila Shakya, Deus Thindwa, et al. 2017. 'The STRATAA Study Protocol: A Programme to Assess the Burden of Enteric Fever in Bangladesh, Malawi and Nepal Using Prospective Population Census, Passive Surveillance, Serological Studies and Healthcare Utilisation Surveys'. *BMJ Open* 7 (6): e016283. <https://doi.org/10.1136/bmjopen-2017-016283>.
- Dixon, Justin, Eleanor Elizabeth MacPherson, Susan Nayiga, Salome Manyau, Christine Nabirye, Miriam Kayendeke, Esnart Sanudi, et al. 2021. 'Antibiotic Stories: A Mixed-Methods, Multi-Country Analysis of Household Antibiotic Use in Malawi, Uganda and Zimbabwe'. *BMJ Global Health* 6 (11): e006920. <https://doi.org/10.1136/bmjgh-2021-006920>.
- Dromigny, Jacques Albert, Pierre Nabeth, Ann Juergens-Behr, and Jean David Perrier-Gros-Claude. 2005. 'Risk Factors for Antibiotic-Resistant Escherichia Coli Isolated from Community-Acquired Urinary Tract Infections in Dakar, Senegal'. *Journal of Antimicrobial Chemotherapy* 56 (1): 236–39. <https://doi.org/10.1093/jac/dki158>.
- Dyson, Zoe A., Philip M. Ashton, Farhana Khanam, Angeziwa Chunga, Mila Shakya, James Meiring, Susan Tonks, et al. 2023. 'Genomic Epidemiology and Antimicrobial Resistance Transmission of Salmonella Typhi and Paratyphi A at Three Urban Sites in



- Africa and Asia'. medRxiv. <https://doi.org/10.1101/2023.03.11.23286741>.
- Dyson, Zoe A., and Kathryn E. Holt. 2021. 'Five Years of GenoTyphi: Updates to the Global Salmonella Typhi Genotyping Framework'. *The Journal of Infectious Diseases* 224 (12 Suppl 2): S775–80. <https://doi.org/10.1093/infdis/jiab414>.
- Fantin, Bruno, Xavier Duval, Laurent Massias, Loubna Alavoine, Françoise Chau, Sylvie Retout, Antoine Andremont, and France Mentré. 2009. 'Ciprofloxacin Dosage and Emergence of Resistance in Human Commensal Bacteria'. *The Journal of Infectious Diseases* 200 (3): 390–98. <https://doi.org/10.1086/600122>.
- Feasey, Nicholas A., Katherine Gaskell, Vanessa Wong, Chisomo Msefula, George Selemani, Save Kumwenda, Theresa J. Allain, et al. 2015. 'Rapid Emergence of Multidrug Resistant, H58-Lineage Salmonella Typhi in Blantyre, Malawi'. *PLOS Neglected Tropical Diseases* 9 (4): e0003748. <https://doi.org/10.1371/journal.pntd.0003748>.
- Feldgarden, Michael, Vyacheslav Brover, Daniel H. Haft, Arjun B. Prasad, Douglas J. Slotta, Igor Tolstoy, Gregory H. Tyson, et al. 2019. 'Validating the AMR Finder Tool and Resistance Gene Database by Using Antimicrobial Resistance Genotype-Phenotype Correlations in a Collection of Isolates'. *Antimicrobial Agents and Chemotherapy* 63 (11). <https://doi.org/10.1128/AAC.00483-19>.
- Girardi, Cristobal, Josephine Greve, Marc Lamshöft, Ingo Fetzer, Anja Miltner, Andreas Schäffer, and Matthias Kästner. 2011. 'Biodegradation of Ciprofloxacin in Water and Soil and Its Effects on the Microbial Communities'. *Journal of Hazardous Materials* 198 (December): 22–30. <https://doi.org/10.1016/j.jhazmat.2011.10.004>.
- Giri, Abhishek, Abhilasha Karkey, Sabina Dongol, Amit Arjyal, Archana Maharjan, Balaji Veeraraghavan, Buddhi Paudyal, et al. 2021. 'Azithromycin and Cefixime Combination versus Azithromycin Alone for the Out-Patient Treatment of Clinically Suspected or Confirmed Uncomplicated Typhoid Fever in South Asia: A Randomised Controlled Trial Protocol'. *Wellcome Open Research* 6: 207. <https://doi.org/10.12688/wellcomeopenres.16801.2>.
- Gottesman, Bat Sheva, Yehuda Carmeli, Pnina Shitrit, and Michal Chowers. 2009. 'Impact of Quinolone Restriction on Resistance Patterns of Escherichia Coli Isolated from Urine by Culture in a Community Setting'. *Clinical Infectious Diseases* 49 (6): 869–75. <https://doi.org/10.1086/605530>.
- Gunn, John S., Joanna M. Marshall, Stephen Baker, Sabina Dongol, Richelle C. Charles, and Edward T. Ryan. 2014. 'Salmonella Chronic Carriage: Epidemiology, Diagnosis and Gallbladder Persistence'. *Trends in Microbiology* 22 (11): 648–55. <https://doi.org/10.1016/j.tim.2014.06.007>.
- Hassing, R.-J., W. H. F. Goessens, D. J. Mevius, W. Pelt, J. W. Mouton, A. Verbon, and P. J. Genderen. 2013. 'Decreased Ciprofloxacin Susceptibility in Salmonella Typhi and Paratyphi Infections in Ill-Returned Travellers: The Impact on Clinical Outcome and Future Treatment Options'. *European Journal of Clinical Microbiology & Infectious Diseases* 32 (10): 1295–1301. <https://doi.org/10.1007/s10096-013-1878-9>.
- Hopkins, Katie L., Robert H. Davies, and E. John Threlfall. 2005. 'Mechanisms of Quinolone Resistance in Escherichia Coli and Salmonella: Recent Developments'. *International Journal of Antimicrobial Agents* 25 (5): 358–73. <https://doi.org/10.1016/j.ijantimicag.2005.02.006>.
- Kaljee, Linda M, Alfred Pach, Denise Garrett, Deepak Bajracharya, Kshitji Karki, and Imran Khan. 2018. 'Social and Economic Burden Associated With Typhoid Fever in

- Kathmandu and Surrounding Areas: A Qualitative Study'. *The Journal of Infectious Diseases* 218 (suppl\_4): S243–49. <https://doi.org/10.1093/infdis/jix122>.
- Kalyaanamoorthy, Subha, Bui Quang Minh, Thomas K. F. Wong, Arndt von Haeseler, and Lars S. Jermiin. 2017. 'ModelFinder: Fast Model Selection for Accurate Phylogenetic Estimates'. *Nature Methods* 14 (6): 587–89. <https://doi.org/10.1038/nmeth.4285>.
- Kamanula, John F., Omega J. Zambasa, and Wellington R.L. Masamba. 2014. 'Quality of Drinking Water and Cholera Prevalence in Ndirande Township, City of Blantyre, Malawi: Transboundary Water Cooperation: Building Partnerships.' *Physics and Chemistry of the Earth* 72–75: 61–67. <https://doi.org/10.1016/j.pce.2014.09.001>.
- Kariuki, Samuel, Zoe A Dyson, Cecilia Mbae, Ronald Ngetich, Susan M Kawai, Celestine Wairimu, Stephen Anyona, et al. 2021. 'Multiple Introductions of Multidrug-Resistant Typhoid Associated with Acute Infection and Asymptomatic Carriage, Kenya'. Edited by Joseph Lewnard, Bavesh D Kana, Lauren Cowley, and Madikay Senghore. *ELife* 10 (September): e67852. <https://doi.org/10.7554/eLife.67852>.
- Kariuki, Samuel, Gunturu Revathi, John Kiiru, Doris M. Mengo, Joyce Mwituria, Jane Muyodi, Agnes Munyalo, et al. 2010. 'Typhoid in Kenya Is Associated with a Dominant Multidrug-Resistant Salmonella enterica Serovar Typhi Haplotype That Is Also Widespread in Southeast Asia'. *Journal of Clinical Microbiology* 48 (6): 2171–76. <https://doi.org/10.1128/JCM.01983-09>.
- Karkey, Abhilasha, Thibaut Jombart, Alan W. Walker, Corinne N. Thompson, Andres Torres, Sabina Dongol, Nga Tran Vu Thieu, et al. 2016. 'The Ecological Dynamics of Fecal Contamination and Salmonella Typhi and Salmonella Paratyphi A in Municipal Kathmandu Drinking Water'. *PLOS Neglected Tropical Diseases* 10 (1): e0004346. <https://doi.org/10.1371/journal.pntd.0004346>.
- Letunic, Ivica, and Peer Bork. 2019. 'Interactive Tree Of Life (ITOL) v4: Recent Updates and New Developments'. *Nucleic Acids Research* 47 (W1): W256–59. <https://doi.org/10.1093/nar/gkz239>.
- Li, Heng. 2013. 'Aligning Sequence Reads, Clone Sequences and Assembly Contigs with BWA-MEM'. *ArXiv:1303.3997 [q-Bio]*, March. <http://arxiv.org/abs/1303.3997>.
- Lunguya, Octavie, Veerle Lejon, Marie-France Phoba, Sophie Bertrand, Raymond Vanhoof, Jan Verhaegen, Anthony Marius Smith, Karen Helena Keddy, Jean-Jacques Muyembe-Tamfum, and Jan Jacobs. 2012. 'Salmonella Typhi in the Democratic Republic of the Congo: Fluoroquinolone Decreased Susceptibility on the Rise'. *PLoS Neglected Tropical Diseases* 6 (11): e1921. <https://doi.org/10.1371/journal.pntd.0001921>.
- MacDougall, Conan, J. Patrick Powell, Christopher K. Johnson, Michael B. Edmond, and Ronald E. Polk. 2005. 'Hospital and Community Fluoroquinolone Use and Resistance in Staphylococcus Aureus and Escherichia Coli in 17 US Hospitals'. *Clinical Infectious Diseases: An Official Publication of the Infectious Diseases Society of America* 41 (4): 435–40. <https://doi.org/10.1086/432056>.
- MacPherson, Eleanor E., Joanna Reynolds, Esnart Sanudi, Alexander Nkaombe, John Mankhomwa, Justin Dixon, and Clare I. R. Chandler. 2022. 'Understanding Antimicrobial Use in Subsistence Farmers in Chikwawa District Malawi, Implications for Public Awareness Campaigns'. *PLOS Global Public Health* 2 (6): e0000314. <https://doi.org/10.1371/journal.pgph.0000314>.
- Mashe, Tapfumanei, Muchaneta Gudza-Mugabe, Andrew Tarupiwa, Ellen Munemo, Sekesai

- Mtapuri-Zinyowera, Shannon L. Smouse, Arvinda Sooka, Babill Stray-Pedersen, Anthony M. Smith, and Joshua Mbanga. 2019. 'Laboratory Characterisation of Salmonella Enterica Serotype Typhi Isolates from Zimbabwe, 2009–2017'. *BMC Infectious Diseases* 19 (May): 487. <https://doi.org/10.1186/s12879-019-4114-0>.
- Mashe, Tapfumanei, Pimlapas Leekitcharoenphon, Sekesai Mtapuri-Zinyowera, Robert A Kingsley, V Robertson, Andrew Tarupiwa, Marleen M Kock, et al. 2021. 'Salmonella Enterica Serovar Typhi H58 Clone Has Been Endemic in Zimbabwe from 2012 to 2019'. *Journal of Antimicrobial Chemotherapy* 76 (5): 1160–67. <https://doi.org/10.1093/jac/dkaa519>.
- Meiring, James E, Matthew B Laurens, Pratiksha Patel, Priyanka Patel, Theresa Misiri, Kenneth Simiyu, Felistas Mwakiseghile, et al. 2019. 'Typhoid Vaccine Acceleration Consortium Malawi: A Phase III, Randomized, Double-Blind, Controlled Trial of the Clinical Efficacy of Typhoid Conjugate Vaccine Among Children in Blantyre, Malawi'. *Clinical Infectious Diseases* 68 (Supplement\_2): S50–58. <https://doi.org/10.1093/cid/ciy1103>.
- Meiring, James E., Mila Shakya, Farhana Khanam, Merryn Voysey, Maile T. Phillips, Susan Tonks, Deus Thindwa, et al. 2021. 'Burden of Enteric Fever at Three Urban Sites in Africa and Asia: A Multicentre Population-Based Study'. *The Lancet Global Health* 9 (12): e1688–96. [https://doi.org/10.1016/S2214-109X\(21\)00370-3](https://doi.org/10.1016/S2214-109X(21)00370-3).
- Minh, Bui Quang, Heiko A Schmidt, Olga Chernomor, Dominik Schrepf, Michael D Woodhams, Arndt von Haeseler, and Robert Lanfear. 2020. 'IQ-TREE 2: New Models and Efficient Methods for Phylogenetic Inference in the Genomic Era'. *Molecular Biology and Evolution* 37 (5): 1530–34. <https://doi.org/10.1093/molbev/msaa015>.
- Morgan, Daniel J, Iruka N Okeke, Ramanan Laxminarayan, Eli N Perencevich, and Scott Weisenberg. 2011. 'Non-Prescription Antimicrobial Use Worldwide: A Systematic Review'. *The Lancet Infectious Diseases* 11 (9): 692–701. [https://doi.org/10.1016/S1473-3099\(11\)70054-8](https://doi.org/10.1016/S1473-3099(11)70054-8).
- Morley, Valerie J., Robert J. Woods, and Andrew F. Read. 2019. 'Bystander Selection for Antimicrobial Resistance: Implications for Patient Health'. *Trends in Microbiology* 27 (10): 864–77. <https://doi.org/10.1016/j.tim.2019.06.004>.
- Mutai, Winnie C., Anne W. T. Muigai, Peter Waiyaki, and Samuel Kariuki. 2018. 'Multi-Drug Resistant Salmonella Enterica Serovar Typhi Isolates with Reduced Susceptibility to Ciprofloxacin in Kenya'. *BMC Microbiology* 18 (1): 187. <https://doi.org/10.1186/s12866-018-1332-3>.
- N'cho, Hammad S., Kudzai P.E. Masunda, Innocent Mukeredzi, Portia Manangazira, Emmaculate Govore, Clemence Duri, Rachael D. Aubert, et al. 2019. 'Typhoid Fever Outbreak — Harare, Zimbabwe, October 2017–February 2018'. *MMWR. Morbidity and Mortality Weekly Report* 68 (2): 44–45. <https://doi.org/10.15585/mmwr.mm6802a5>.
- Ochieng, Caroline, Jessica C. Chen, Mike Powel Osita, Lee S. Katz, Taylor Griswold, Victor Omballa, Eric Ng'eno, et al. 2022. 'Molecular Characterization of Circulating Salmonella Typhi Strains in an Urban Informal Settlement in Kenya'. *PLOS Neglected Tropical Diseases* 16 (8): e0010704. <https://doi.org/10.1371/journal.pntd.0010704>.
- Olesen, Scott W., Michael L. Barnett, Derek R. MacFadden, John S. Brownstein, Sonia Hernández-Díaz, Marc Lipsitch, and Yonatan H. Grad. 2018. 'The Distribution of Antibiotic Use and Its Association with Antibiotic Resistance'. *ELife* 7 (December):

- e39435. <https://doi.org/10.7554/eLife.39435>.
- Park, Se Eun, Duy Thanh Pham, Christine Boinett, Vanessa K. Wong, Gi Deok Pak, Ursula Panzner, Ligia Maria Cruz Espinoza, et al. 2018. 'The Phylogeography and Incidence of Multi-Drug Resistant Typhoid Fever in Sub-Saharan Africa'. *Nature Communications* 9 (1): 5094. <https://doi.org/10.1038/s41467-018-07370-z>.
- Patel, Priyanka D., Pratiksha Patel, Yuanyuan Liang, James E. Meiring, Theresa Misiri, Felistas Mwakiseghile, J. Kathleen Tracy, et al. 2021. 'Safety and Efficacy of a Typhoid Conjugate Vaccine in Malawian Children'. *New England Journal of Medicine* 385 (12): 1104–15. <https://doi.org/10.1056/NEJMoa2035916>.
- Pragasam, Agila Kumari, Derek Pickard, Vanessa Wong, Gordon Dougan, Gagandeep Kang, Andrew Thompson, Jacob John, Veeraraghavan Balaji, and Ankur Mutreja. 2020. 'Phylogenetic Analysis Indicates a Longer Term Presence of the Globally Distributed H58 Haplotype of Salmonella Typhi in Southern India'. *Clinical Infectious Diseases* 71 (8): 1856–63. <https://doi.org/10.1093/cid/ciz1112>.
- Qadri, Firdausi, Farhana Khanam, Xinxue Liu, Katherine Theiss-Nyland, Prasanta Kumar Biswas, Amirul Islam Bhuiyan, Faisal Ahmmed, et al. 2021. 'Protection by Vaccination of Children against Typhoid Fever with a Vi-Tetanus Toxoid Conjugate Vaccine in Urban Bangladesh: A Cluster-Randomised Trial'. *The Lancet* 398 (10301): 675–84. [https://doi.org/10.1016/S0140-6736\(21\)01124-7](https://doi.org/10.1016/S0140-6736(21)01124-7).
- Sande-Bruinsma, Nienke van de, Hajo Grundmann, Didier Verloo, Edine Tiemersma, Jos Monen, Herman Goossens, and Matus Ferech. 2008. 'Antimicrobial Drug Use and Resistance in Europe'. *Emerging Infectious Diseases* 14 (11): 1722–30. <https://doi.org/10.3201/eid1411.070467>.
- Shakya, Mila, Merryn Voysey, Katherine Theiss-Nyland, Rachel Colin-Jones, Dikshya Pant, Anup Adhikari, Susan Tonks, et al. 2021. 'Efficacy of Typhoid Conjugate Vaccine in Nepal: Final Results of a Phase 3, Randomised, Controlled Trial'. *The Lancet Global Health* 9 (11): e1561–68. [https://doi.org/10.1016/S2214-109X\(21\)00346-6](https://doi.org/10.1016/S2214-109X(21)00346-6).
- Smith, A. M., N. Govender, K. H. Keddy, and Group for Enteric, Respiratory and Meningeal Disease Surveillance in South Africa (GERMS-SA). 2010. 'Quinolone-Resistant Salmonella Typhi in South Africa, 2003-2007'. *Epidemiology and Infection* 138 (1): 86–90. <https://doi.org/10.1017/S0950268809990331>.
- Stanaway, Jeffrey D., Robert C. Reiner, Brigitte F. Blacker, Ellen M. Goldberg, Ibrahim A. Khalil, Christopher E. Troeger, Jason R. Andrews, et al. 2019. 'The Global Burden of Typhoid and Paratyphoid Fevers: A Systematic Analysis for the Global Burden of Disease Study 2017'. *The Lancet Infectious Diseases* 19 (4): 369–81. [https://doi.org/10.1016/S1473-3099\(18\)30685-6](https://doi.org/10.1016/S1473-3099(18)30685-6).
- 'Stories from the Field: How Vaccines Can Help to Prevent Antibiotic Resistance - Zimbabwe's Response to Drug-Resistant Outbreaks of Typhoid and Cholera'. n.d. Accessed 15 November 2022. <https://www.who.int/news/item/11-09-2021-stories-from-the-field-how-vaccines-can-help-to-prevent-antibiotic-resistance---zimbabwe-s-response-to-drug-resistant-outbreaks-of-typhoid-and-cholera>.
- Sun, Daphne S., Stephen M. Kissler, Sanjat Kanjilal, Scott W. Olesen, Marc Lipsitch, and Yonatan H. Grad. 2022. 'Analysis of Multiple Bacterial Species and Antibiotic Classes Reveals Large Variation in the Association between Seasonal Antibiotic Use and Resistance'. *PLOS Biology* 20 (3): e3001579. <https://doi.org/10.1371/journal.pbio.3001579>.

- Thilliez, Gaetan, Tapfumane Mashe, Blessmore V. Chaibva, Valerie Robertson, Matt Bawn, Andrew Tarupiwa, Faustinos Tatenda Takawira, et al. 2022. 'Population Structure and Evolution of Salmonella Enterica Serotype Typhi in Zimbabwe before a Typhoid Conjugate Vaccine Immunization Campaign'. bioRxiv.  
<https://doi.org/10.1101/2022.09.01.506167>.
- Van der Auwera, Geraldine A., and Brian D. O'Connor. 2020. *Genomics in the Cloud: Using Docker, GATK, and WDL in Terra*. First edition. Sebastopol, CA: O'Reilly Media.
- Vernaz, Nathalie, Benedikt Huttner, Daniel Musciconico, Jean-Luc Salomon, Pascal Bonnabry, José Maria López-Lozano, Arielle Beyaert, Jacques Schrenzel, and Stephan Harbarth. 2011. 'Modelling the Impact of Antibiotic Use on Antibiotic-Resistant Escherichia Coli Using Population-Based Data from a Large Hospital and Its Surrounding Community'. *Journal of Antimicrobial Chemotherapy* 66 (4): 928–35.  
<https://doi.org/10.1093/jac/dkq525>.
- Wain, John, Nguyen T. T. Hoa, Nguyen T. Chinh, Ha Vinh, Martin J. Everett, To S. Diep, Nicholas P. J. Day, et al. 1997. 'Quinolone-Resistant *Salmonella Typhi* in Viet Nam: Molecular Basis of Resistance and Clinical Response to Treatment'. *Clinical Infectious Diseases* 25 (6): 1404–10. <https://doi.org/10.1086/516128>.
- 'WHO Publishes List of Bacteria for Which New Antibiotics Are Urgently Needed'. 2017. <https://www.who.int/news/item/27-02-2017-who-publishes-list-of-bacteria-for-which-new-antibiotics-are-urgently-needed>.
- Willemsen, I., D. Bogaers-Hofman, M. Winters, and J. Kluytmans. 2009. 'Correlation between Antibiotic Use and Resistance in a Hospital: Temporary and Ward-Specific Observations'. *Infection* 37 (5): 432–37. <https://doi.org/10.1007/s15010-009-8325-y>.
- Willemsen, Ina, Ben Cooper, Carin van Buitenen, Marjolein Winters, Gunnar Andriess, and Jan Kluytmans. 2010. 'Improving Quinolone Use in Hospitals by Using a Bundle of Interventions in an Interrupted Time Series Analysis'. *Antimicrobial Agents and Chemotherapy* 54 (9): 3763–69. <https://doi.org/10.1128/AAC.01581-09>.
- Wong, Vanessa K, Stephen Baker, Derek J Pickard, Julian Parkhill, Andrew J Page, Nicholas A Feasey, Robert A Kingsley, et al. 2015. 'Phylogeographical Analysis of the Dominant Multidrug-Resistant H58 Clade of Salmonella Typhi Identifies Inter- and Intracontinental Transmission Events'. *Nature Genetics* 47 (6): 632–39.  
<https://doi.org/10.1038/ng.3281>.
- Zaki, Syed Ahmed, and Sunil Karande. 2011. 'Multidrug-Resistant Typhoid Fever: A Review'. *Journal of Infection in Developing Countries* 5 (5): 324–37.  
<https://doi.org/10.3855/jidc.1405>.
- Zmora, Niv, Sudeep Shrestha, Ami Neuberger, Yael Paran, Rajendra Tamrakar, Ashish Shrestha, Surendra K. Madhup, T. R. S. Bedi, Rajendra Koju, and Eli Schwartz. 2018. 'Open Label Comparative Trial of Mono versus Dual Antibiotic Therapy for Typhoid Fever in Adults'. *PLoS Neglected Tropical Diseases* 12 (4): e0006380.  
<https://doi.org/10.1371/journal.pntd.0006380>.

## Funding

This research was funded in part by the Wellcome Trust [Grant numbers 200901/Z/16/Z to PM and 206545/Z/17/Z to MLW and supporting, in part, MYRH and 106158/Z/14/Z to the STRATAA Consortium]. For the purpose of open access, the author has applied a CC BY public copyright licence to any Author Accepted Manuscript version arising from this submission. This work was supported by grants (OPP1151153, to the Typhoid Vaccine Acceleration Consortium and OPP1141321 to the STRATAA Consortium) from the Bill and Melinda Gates Foundation. MAG, ACC and PMA were supported by a Research Professorship (NIHR300039) from the National Institute for Health Research, U.K. Department of Health and Social Care.