

Protection against symptomatic SARS-CoV-2 BA.5 infection conferred by the Pfizer-BioNTech Original/BA.4-5 bivalent vaccine compared to the mRNA Original (ancestral) monovalent vaccines – a matched cohort study in France

Appendix

Contents

Selection of individuals.....	1
Epidemiological background	2
Descriptive and univariate analysis	3
Univariate analysis	4
Multivariate analysis.....	5

Selection of individuals

Table S1 : Inclusion process (before matching)

	Excluded	Remain
Born in 1962 and earlier and boosted during the inclusion period		878,492
Exclusion for data inconsistency	10,354	868,138
very-high-risk comorbidity ¹	91,686	773,623
primary vaccine series with less or more than two doses	47,565	728,887
at least one supplementary dose for medical reason (ex: immunosuppression)	24,889	703,998
pre-inclusion booster with non mRNA vaccine	113	703,885
positive test < 60 days before follow-up	1,861	702,024
>20 tests in the 6 months prior to inclusion	26	701,998
over 99 years	1,940	700,058

¹: cancers, haematological malignancies undergoing chemotherapy, severe chronic kidney disease, chronic dialysis, solid organ transplants, haematopoietic stem cell allografts, chronic multi-disease conditions with two or more organ failures, certain rare diseases and those at particular risk of infection, and Down's syndrome

Table S2 : Size of the study population after matching

	Total	matched	% matched
Original/BA.4-5	582,398	68,426	12%
Original	117,660	68,426	58%
Total	697,649	136,852	20%

Epidemiological background

Figure S1: Weekly community incidence rates (France, data SI-DEP)

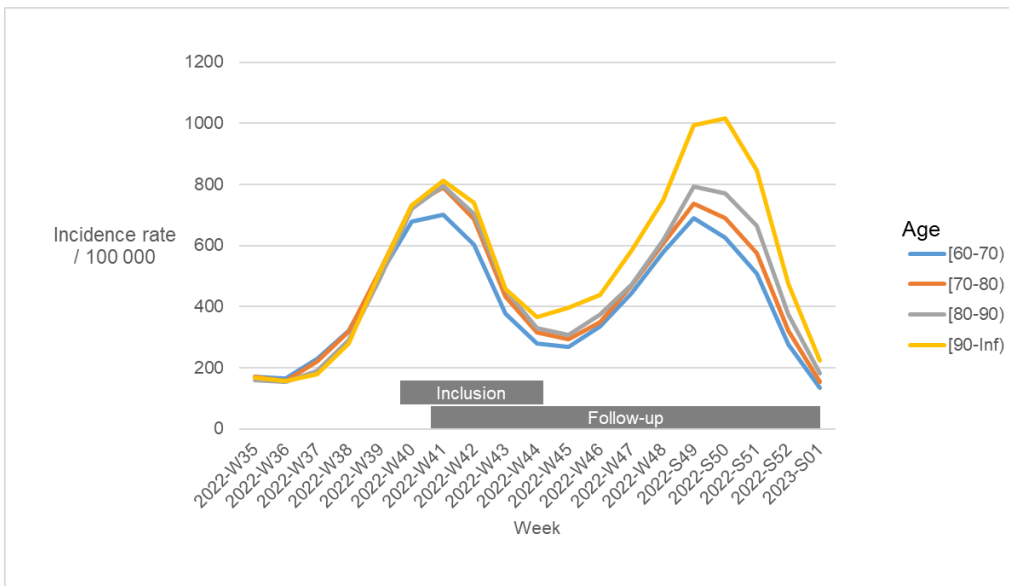
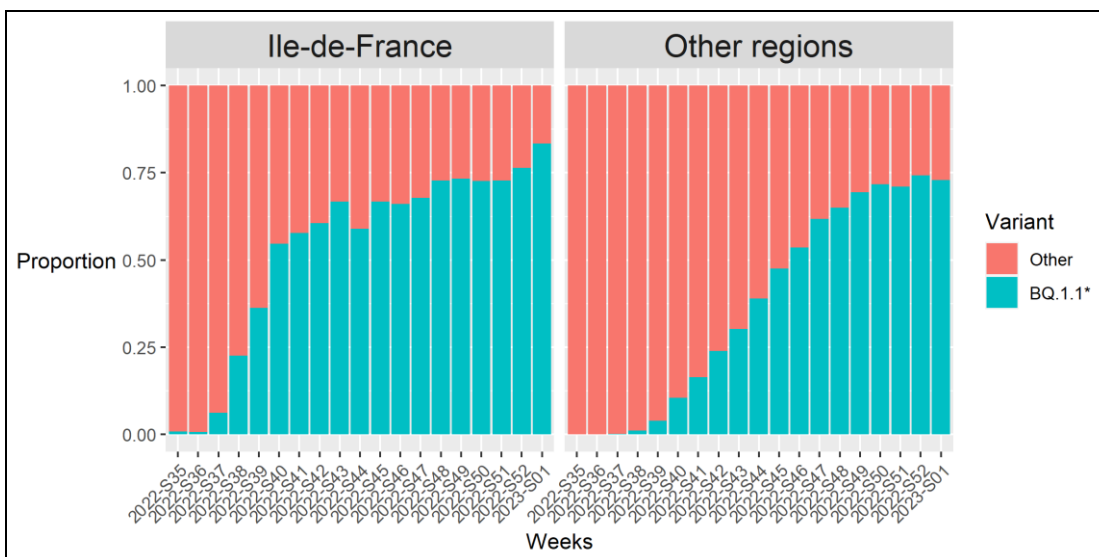
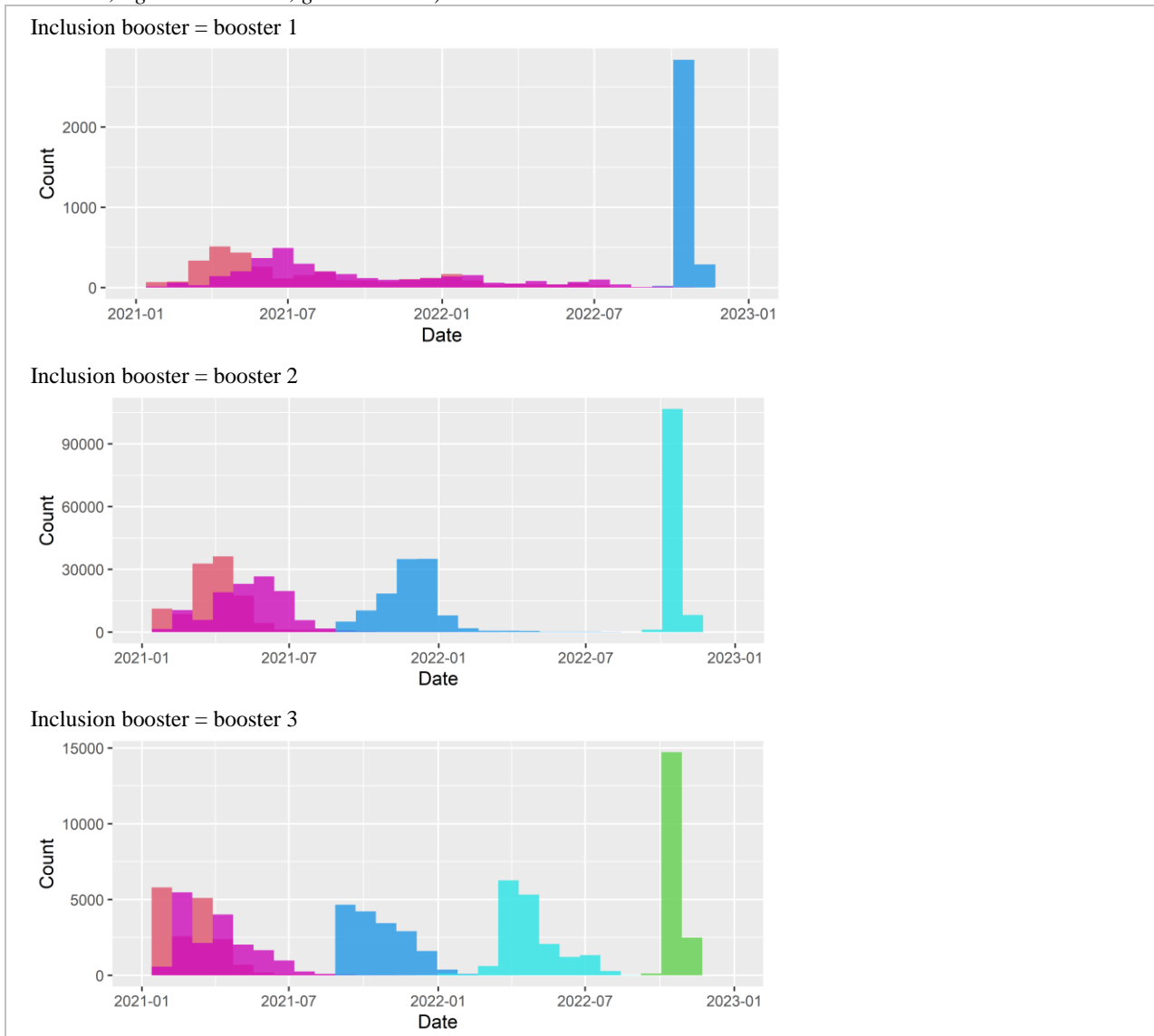


Figure S2: Emergence of B.Q.1.1* in France according to representative whole genome sequencing



Descriptive and univariate analysis

Figure S3 : Immunisation history by rank of booster at inclusion (one colour per dose: salmon: dose 1, pink: dose 2, blue: dose 3, light blue: dose 4, green: dose 5)



Univariate analysis

Tableau S3 : Descriptive statistics by occurrence of the outcome

	Outcome		p-value ²
	No, N = 134,680 ¹	Yes, N = 2,172 ¹	
Week of inclusion			<0.001
2022-W40	20,097 (98%)	391 (2%)	
2022-W41	51,672 (98%)	898 (2%)	
2022-W42	33,367 (99%)	507 (1%)	
2022-W43	19,921 (99%)	253 (1%)	
2022-W44	9,623 (99%)	123 (1%)	
Inclusion booster			0.008
Original	67,279 (98%)	1,147 (2%)	
Original / BA.4-5	67,401 (99%)	1,025 (1%)	
Booster dose at inclusion			<0.001
1	3,126 (99%)	46 (1%)	
2	114,593 (98%)	1,767 (2%)	
3	16,961 (98%)	359 (2%)	
Sex			<0.001
Female	73,552 (99%)	1,092 (1%)	
Male	61,128 (98%)	1,080 (2%)	
Age			0.89
60-79	99,319 (98%)	1,599 (2%)	
80-99	35,361 (98%)	573 (2%)	
Previous infection			<0.001
Undocumented	92,126 (98%)	1,791 (2%)	
Delta/Pre-Delta	2,678 (98%)	61 (2%)	
Tr_Delta-BA.1	1,708 (98%)	28 (2%)	
Omicron BA.1	11,925 (99%)	158 (1%)	
Omicron BA.2 BA.4/5	26,243 (99%)	134 (1%)	
Medium-risk comorbidity			0.003
No	86,249 (98%)	1,323 (2%)	
Yes	48,431 (98%)	849 (2%)	

¹n (%)

²Pearson's Chi-squared test; Fisher's exact test

Figure S4 : Cumulative probability over time of symptomatic infection since the booster dose by the type of vaccine of the booster dose - Follow-up started 7 days after booster injection; ribbons indicate 95%CI

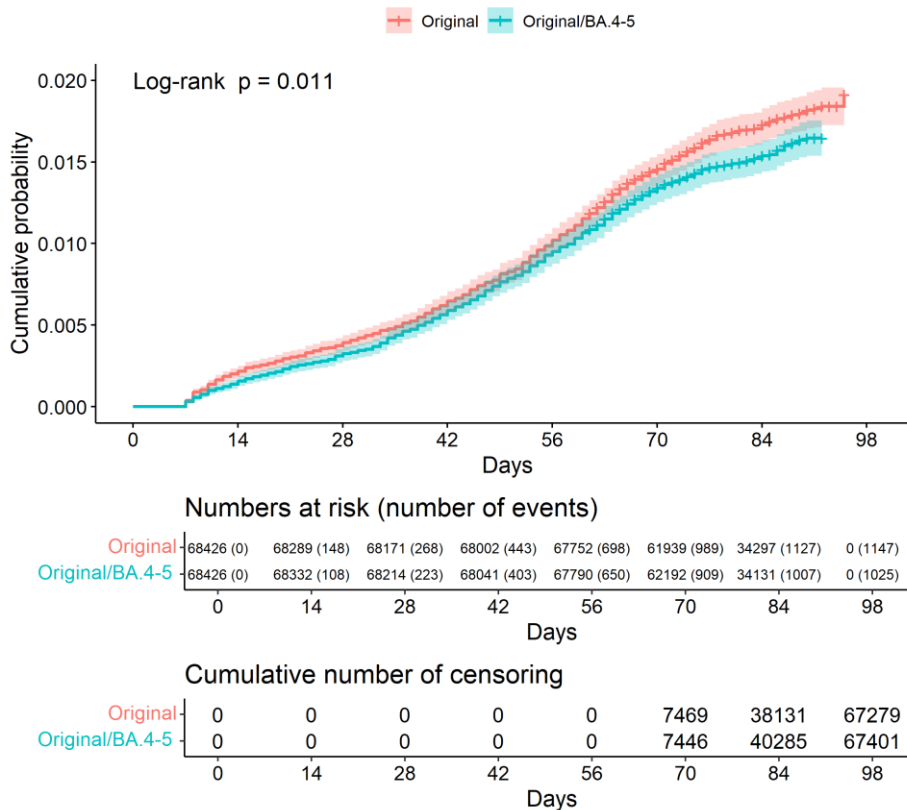
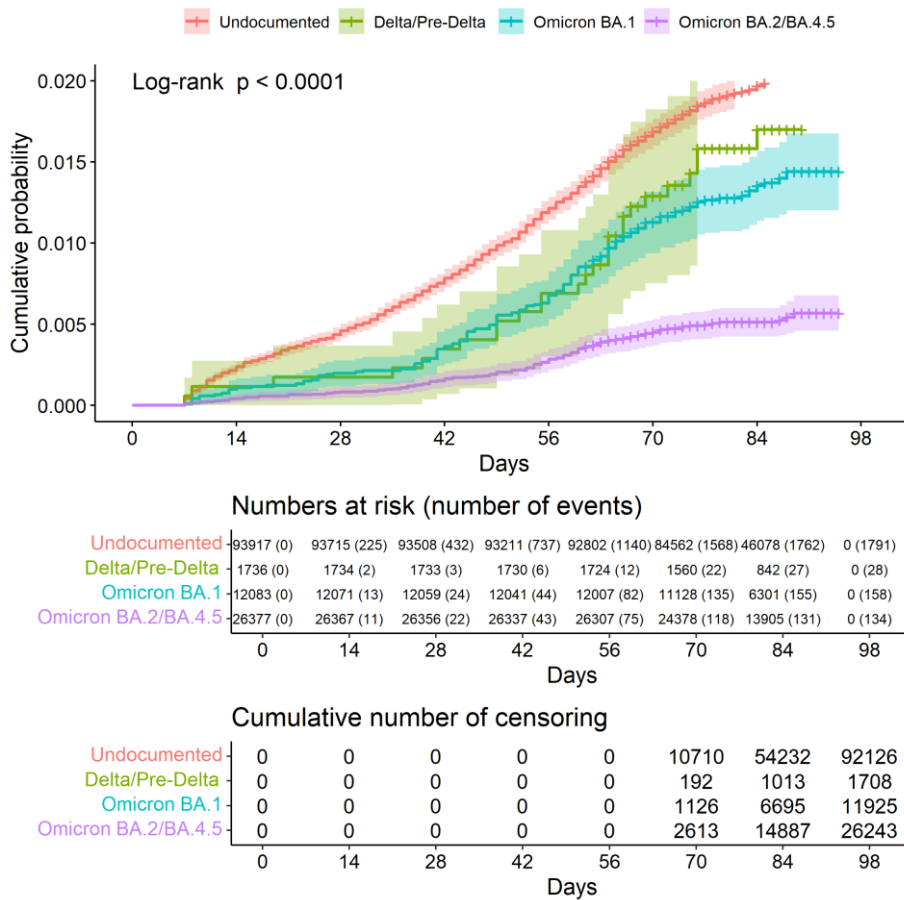


Figure S5 : Cumulative probability over time of symptomatic infection since the booster dose by previous infection - Follow-up started 7 days after booster injection; ribbons indicate 95%CI



Multivariate analysis

Table S4 : Multivariate analysis (Cox Proportional-Hazards Model - N=136,852, number of events= 2172)

	aHR ¹	95% CI ¹	p-value
Inclusion booster			
Original	—	—	
Original / BA.4-5	0.92	0.84, 1.00	0.045
Age			
60-79	—	—	
80-99	0.98	0.89, 1.08	0.6
Sex			
Female	—	—	
Male	1.19	1.09, 1.29	<0.001
Medium-risk comorbidity			
No	—	—	
Yes	1.12	1.03, 1.23	0.008
Previous infection			
Undocumented	—	—	
Delta/Pre-Delta	1.15	0.89, 1.48	0.3
Tr_Delta-BA.1	0.84	0.58, 1.21	0.3
Omicron BA.1	0.67	0.57, 0.79	<0.001
Omicron BA.2 BA.4/5	0.26	0.22, 0.31	<0.001

¹aHR = adjusted hazard ratio, CI = Confidence Interval

Table S5 : Multivariate analysis – Participants without previous infection (Cox Proportional-Hazards Model - N=93,917, number of events= 1791)

	aHR ¹	95% CI ¹	p-value
Inclusion booster			
Original	—	—	
Original / BA.4-5	0.96	0.88, 1.06	0.4
Age			
60-79	—	—	
80-99	0.90	0.81, 1.01	0.070
Sex			
Female	—	—	
Male	1.21	1.10, 1.33	<0.001
Medium-risk comorbidity			
No	—	—	
Yes	1.12	1.02, 1.24	0.017

¹aHR = Hazard Ratio, CI = Confidence Interval