

## Supplementary Information

Analysis of the risk and pre-emptive control of viral outbreaks accounting for within-host dynamics: SARS-CoV-2 antigen testing as a case study

William S Hart<sup>1,2,\*</sup>, Hyeongki Park<sup>2</sup>, Yong Dam Jeong<sup>2,3</sup>, Kwang Su Kim<sup>2,3,4</sup>, Raiki Yoshimura<sup>2</sup>, Robin N Thompson<sup>5,6,‡</sup>, Shingo Iwami<sup>2,7,8,9,10,‡</sup>

<sup>1</sup>Mathematical Institute, University of Oxford, Oxford, OX2 6GG, UK.

<sup>2</sup>interdisciplinary Biology Laboratory (iBLab), Division of Natural Science, Graduate School of Science, Nagoya University, Japan. <sup>3</sup>Department of Mathematics, Pusan National University, Busan, South Korea. <sup>4</sup>Department of Science System Simulation, Pukyong National University, Busan, South Korea. <sup>5</sup>Mathematics Institute, University of Warwick, Coventry, CV4 7AL, UK. <sup>6</sup>Zeeman Institute for Systems Biology and Infectious Disease Epidemiology Research (SBIDER), University of Warwick, Coventry, CV4 7AL, UK. <sup>7</sup>Institute of Mathematics for Industry, Kyushu University, Fukuoka, Japan. <sup>8</sup>Institute for the Advanced Study of Human Biology (ASHBi), Kyoto University, Kyoto, Japan. <sup>9</sup>Interdisciplinary Theoretical and Mathematical Sciences Program (iTHEMS), RIKEN, Saitama, Japan. <sup>10</sup>NEXT-Ganken Program, Japanese Foundation for Cancer Research (JFCR), Tokyo, Japan. <sup>13</sup>Science Groove Inc., Fukuoka, Japan.

## 26 **Supplementary Note 1: Probability of detection**

27 Here, we derive the expression given in the main text for the probability,  $p_d(\tau)$ ,  
28 of an infected individual, subject to regular antigen testing, having been detected by  
29 time since infection  $\tau$ . We assume (as in most of our analyses) an exponentially  
30 distributed interval of mean  $T$  between successive tests (i.e., a constant rate of  
31 testing).

32 First, since we assume that symptomatic hosts are always detected, we have  
33  $p_d(\tau) = 1$  for  $\tau \geq \tau_{\text{inc}}$ , where  $\tau_{\text{inc}}$  is the individual's incubation period (which can be  
34 taken to be infinite to represent an entirely asymptomatic infection). Now, for  $\tau < \tau_{\text{inc}}$ ,  
35 we consider a short time interval  $[\tau, \tau + d\tau]$ . The probability that the individual returns  
36 a positive antigen test in this interval is given (up to terms of order  $d\tau^2$ ) by  
37  $(1/T)d\tau \times p_+(V(\tau))$ , where  $(1/T)d\tau$  represents the probability of taking a test, and  
38  $p_+(V(\tau))$  the probability that the result of a test is positive (which depends on the  
39 instantaneous viral load,  $V(\tau)$ ). Conditioning on whether or not a positive test is  
40 returned in the interval  $[\tau, \tau + d\tau]$  then gives

$$44 \quad p_d(\tau + d\tau) = 1 \times \frac{p_+(V(\tau))d\tau}{T} + p_d(\tau) \times \left(1 - \frac{p_+(V(\tau))d\tau}{T}\right),$$

41 where the probability of detection by time  $(\tau + d\tau)$  conditional on a positive test in  
42  $[\tau, \tau + d\tau]$  is 1, and the probability conditional on no positive test in that interval is  
43  $p_d(\tau)$ .

45 Rearranging the above equation and taking the limit  $d\tau \rightarrow 0$  gives the  
46 differential equation,

$$48 \quad \frac{dp_d}{d\tau} = \frac{p_+(V(\tau))}{T} (1 - p_d(\tau)),$$

47 which can be solved alongside the initial condition  $p_d(0) = 0$  to obtain

$$50 \quad p_d(\tau) = 1 - \exp\left(-\frac{1}{T} \int_0^\tau p_+(V(x))dx\right),$$

49 for  $\tau < \tau_{\text{inc}}$ .

51

## 52 **Supplementary Note 2: Derivation of outbreak risk**

53 Below, we derive an analytical expression for the outbreak risk in a  
54 heterogeneous population divided into  $n$  subgroups (the special case of a  
55 homogeneous population is obtained when  $n = 1$ ), between which the infectiousness  
56 profile of infected hosts (as well as other factors such as susceptibility) may vary.  
57 Specifically, we consider a branching process model in which susceptible depletion is  
58 neglected and infection lineages are assumed to be independent. The outbreak risk is  
59 then taken to be the probability that epidemic extinction does *not* occur within this  
60 branching process framework, following the introduction of a single newly infected host  
61 into the population, i.e., the probability that the number of currently infected individuals  
62 never reaches zero but instead tends to infinity (note that in reality, the assumptions  
63 underlying the branching process model will no longer be valid when the number of  
64 infected individuals becomes large).

65 We suppose that each infected host in group  $j$  transmits the pathogen to  
66 individuals in group  $i$  at total rate  $\beta_{i,j}(\tau)$  at time since infection  $\tau$  (a specific form of  
67  $\beta_{i,j}(\tau)$  is considered later). The expected total number of infections generated in group  
68  $i$  by each infected host in group  $j$  (over the course of infection) is then

$$72 \quad R_{i,j} = \int_0^{\infty} \beta_{i,j}(\tau) d\tau,$$

69 where the basic reproduction number (accounting for regular antigen testing if in  
70 place),  $R_{0,\text{eff}}$ , is the largest eigenvalue of the matrix with entries  $R_{i,j}$  (the next-  
71 generation matrix) (1).

73 Now, we suppose that a single infected individual in group  $j$  is introduced into  
74 the population at time since infection  $\tau$ , with the remainder of the population assumed  
75 to be uninfected at the time of introduction (and assuming no further external pathogen  
76 introductions into the population). Then an expression for the probability of extinction  
77 (i.e., the probability that a major outbreak does *not* occur), denoted  $q_j(\tau)$ , can be  
78 derived by conditioning on whether or not the initial infected individual transmits the  
79 pathogen (to an individual in any population group) between times since infection  $\tau$   
80 and  $(\tau + d\tau)$ , to obtain (neglecting the possibility that multiple transmissions occur,  
81 which has probability of order  $d\tau^2$ )

$$82 \quad q_j(\tau) = \left( \sum_{i=1}^n q_j(\tau + d\tau) q_i(0) \times \beta_{i,j}(\tau) d\tau \right) + q_j(\tau + d\tau) \times \left( 1 - \sum_{i=1}^n \beta_{i,j}(\tau) d\tau \right).$$

83 Here,  $\beta_{i,j}(\tau)d\tau$  gives the probability of a transmission to an individual in group  $i$   
 84 occurring in this time interval,  $q_j(\tau + d\tau)q_i(0)$  the extinction probability conditional on  
 85 such a transmission occurring (since infection lineages are assumed to be  
 86 independent), and  $q_j(\tau + d\tau)$  the extinction probability conditional on no  
 87 transmissions occurring.

88 Rearranging the above equation and taking the limit  $d\tau \rightarrow 0$  gives the  
 89 differential equation,

$$91 \quad \frac{dq_j}{d\tau} = q_j(\tau) \sum_{i=1}^n (1 - q_i(0))\beta_{i,j}(\tau),$$

90 which can be solved alongside the boundary condition  $q_j(\infty) = 1$  to obtain

$$93 \quad q_j(\tau) = \exp\left(-\sum_{i=1}^n (1 - q_i(0)) \int_{\tau}^{\infty} \beta_{i,j}(x) dx\right).$$

92 In particular, we have

$$94 \quad q_j(0) = \exp\left(-\sum_{i=1}^n (1 - q_i(0))R_{i,j}\right).$$

95 Now, a relatively general parameterisation is to take  $\beta_{i,j}(\tau) = \varepsilon_i \eta_i C_{i,j} \beta_j(\tau)$ , so  
 96 that  $R_{i,j} = \varepsilon_i \eta_i C_{i,j} B_j$ . Here,  $\beta_j(\tau)$  is the infectiousness profile of an infected individual  
 97 in group  $j$ ,  $B_j$  is the total integral of  $\beta_j(\tau)$  over all times since infection,  $\varepsilon_i$  is the  
 98 proportion of the population who are in group  $i$ ,  $\eta_i$  is the relative susceptibility in group  
 99  $i$ , and  $C_{i,j}$  represents the rate of contacts between individuals in groups  $i$  and  $j$ . The  
 100 above equation can be used to calculate the outbreak risk for general  $\beta_{i,j}(\tau)$ .  
 101 However, further analytic progress is possible under the assumption of homogeneous  
 102 mixing (i.e., when  $C_{i,j}$  is independent of  $i$  and  $j$ ). Absorbing the value of  $C_{i,j}$  into  
 103  $\beta_{i,j}(\tau)$  (i.e., setting  $C_{i,j} = 1$ ), we then have

$$104 \quad q_j(0) = \exp\left(-B_j \sum_{i=1}^n (1 - q_i(0))\varepsilon_i \eta_i\right). \quad (S1)$$

105 In this case, the overall extinction probability following the introduction of a  
 106 single newly infected individual is

$$107 \quad q(0) = \frac{1}{\bar{\eta}} \sum_{j=1}^n \varepsilon_j \eta_j q_j(0) = \sum_{j=1}^n a_j q_j(0), \quad (S2)$$

108 where  $\bar{\eta} = \sum_{j=1}^n \varepsilon_j \eta_j$  gives the mean population susceptibility, and  $a_j = \varepsilon_j \eta_j / \bar{\eta}$  gives  
 109 the proportion of new infections that are in group  $j$ . Now, Eq. (S1) above can be written  
 110 as

$$112 \quad q_j(0) = \exp(-(1 - q(0))\bar{\eta}B_j),$$

111 and substituting this expression into Eq. (S2) then gives

$$115 \quad q(0) = \frac{1}{\bar{\eta}} \sum_{j=1}^n \varepsilon_j \eta_j \exp(-(1 - q(0))\bar{\eta}B_j) = \sum_{j=1}^n a_j \exp(-(1 - q(0))R_j), \quad (S3)$$

113 where  $R_j = \bar{\eta}B_j$  gives the expected number of transmissions generated by an infected  
 114 host in group  $j$  (over the course of infection).

116 Finally, the outbreak risk (following the introduction of a single newly infected  
 117 individual into an otherwise susceptible population),  $p_{\text{outbreak}} = 1 - q(0)$ , then  
 118 satisfies

$$126 \quad p_{\text{outbreak}} = 1 - \sum_{j=1}^n a_j \times \exp(-R_j \times p_{\text{outbreak}}),$$

119 which is Eq. (2) in the main text. While this equation may have multiple solutions (in  
 120 particular,  $p_{\text{outbreak}} = 0$  is always a solution), by standard theory of hitting  
 121 probabilities on Markov chains (2), the relevant solution is the largest solution between  
 122 0 and 1 (since the relevant solution to Eq. (S3) is the minimal non-negative one). While  
 123 we focussed on the outbreak risk starting with a single, newly infected, primary case,  
 124 it would be straightforward to consider an infected individual introduced into the  
 125 population later in infection, and/or multiple pathogen introductions, in our approach.

127 We note that the basic reproduction number in this scenario (accounting for  
 128 regular antigen testing, if carried out) is

$$132 \quad R_{0,\text{eff}} = \sum_{i=1}^n \varepsilon_i \eta_i B_i = \sum_{i=1}^n a_i R_i,$$

129 where the first equality follows since the next-generation matrix is of separable form  
 130  $R_{i,j} = c_i d_j$  (where here  $c_i = \varepsilon_i \eta_i$  and  $d_j = B_j$ ) and therefore has largest eigenvalue  
 131  $R_{0,\text{eff}} = \sum_{i=1}^n c_i d_i$  (1). This can also be written as

$$135 \quad R_{0,\text{eff}} = \int_0^{\infty} \bar{\beta}(\tau) d\tau,$$

133 where  $\bar{\beta}(\tau) = \bar{\eta} \sum_{i=1}^n a_i \beta_i(\tau)$  gives the expected infectiousness profile, accounting for  
 134 the relative susceptibility of the population. We also note that while the derivation

136 here includes the possibility of heterogeneous susceptibility between different  
137 population sub-groups, we did not consider heterogeneous susceptibility in our  
138 numerical analyses.

139 In the special case of a homogeneous population ( $n = 1$ ), we have

142 
$$p_{\text{outbreak}} = 1 - \exp(-R_{0,\text{eff}} \times p_{\text{outbreak}}),$$

140 i.e. we recover Eq. (1) in the main text.

141

143 **Supplementary Note 3: Wider applicability of outbreak risk equation accounting**  
144 **for heterogeneity**

145 The result in Eq. (2), while derived in the context of a time-since-infection model  
146 in a heterogeneous population, is in fact widely applicable to a range of (branching  
147 process) models. Specifically, taking the limit of a continuous distribution of population  
148 subgroups in Eq. (2) gives the equation

$$157 \quad p_{\text{outbreak}} = 1 - \int_{\Theta} a(\theta) \times \exp(-R(\theta) \times p_{\text{outbreak}}) d\theta. \quad (\text{S4})$$

149 Here  $\theta \in \Theta$  is a continuous variable (which may be either real-valued or higher-  
150 dimensional) indexing population sub-groups and/or possible “types” of infection,  $a(\theta)$   
151 is the probability density that a new infection is of type  $\theta$ , and  $R(\theta)$  gives the expected  
152 total number of transmissions generated by an infected host with infection type  $\theta$ . We  
153 briefly note that the continuous formulation in Eq. (S4) is applicable to the scenario of  
154 heterogeneous within-host dynamics that we considered, but in practice it was easier  
155 to calculate the outbreak risk by sampling the within-host dynamics of a large number  
156 of hosts and using Eq. (2).

158 As an example to demonstrate the applicability of Eq. (S4), we consider a  
159 branching process approximation of the stochastic SIR compartmental epidemic  
160 model. In this case, the possible “types” of infection are indexed by the infectious  
161 period,  $\theta = t_I \in [0, \infty)$ , with  $a(\theta) = \mu \exp(-\mu t_I)$  (i.e., an exponentially distributed  
162 infectious period is assumed) and  $R(\theta) = R_0 \mu t_I$  (i.e., the expected number of  
163 transmissions by an infected host is proportional to their infectious period). Substituting  
164 into Eq. (S4) then gives

$$167 \quad p_{\text{outbreak}} = 1 - \int_0^{\infty} \mu \exp(-(1 + R_0 p_{\text{outbreak}}) \mu t_I) dt_I.$$

165 Integrating and taking the largest solution between 0 and 1 of the resulting quadratic  
166 equation then reproduces the well-known formula,

$$168 \quad p_{\text{outbreak}} = \max\left\{1 - \frac{1}{R_0}, 0\right\}.$$

169 Similarly, the outbreak risk under branching process approximations of a wide range  
170 of more complex compartmental models, for example models with non-exponentially  
171 distributed infectious periods and/or age structure, can also be represented using Eq.  
172 (S4).

173 **Supplementary Note 4: Outbreak risk under delayed and/or time-limited regular**  
 174 **antigen testing**

175 Here, we generalise our results to obtain an expression for the outbreak risk in  
 176 scenarios where regular antigen testing is introduced reactively after an infection  
 177 occurs and/or is only in place for a limited period of time. For simplicity, we consider  
 178 homogeneous within-host dynamics (although the derivation presented here readily  
 179 generalises to a heterogeneous population), supposing that each host infected at  
 180 calendar time  $t$  transmits the pathogen at rate  $\beta(\tau, t)$  at time since infection  $\tau$  (i.e.,  
 181 at calendar time  $(t + \tau)$ ). Below, we first derive the outbreak risk for general  $\beta(\tau, t)$ ,  
 182 before deriving a specific form of  $\beta(\tau, t)$  under delayed and/or time-limited regular  
 183 antigen testing.

184 We suppose that an infected individual, who was infected at calendar time  $t$ , is  
 185 introduced into an otherwise uninfected population at time since infection  $\tau$  (at  
 186 calendar time  $(t + \tau)$ ). Then, conditioning on whether or not the initial infected host  
 187 transmits the pathogen between times since infection  $\tau$  and  $(\tau + d\tau)$  (and assuming  
 188 no more external infections), we find that the extinction probability,  $q(\tau, t)$ , satisfies  
 189 (up to terms of order  $d\tau^2$ )

$$191 \quad q(\tau, t) = q(\tau + d\tau, t)q(0, t + \tau + d\tau) \times \beta(\tau, t)d\tau + q(\tau + d\tau, t) \times (1 - \beta(\tau, t)d\tau).$$

190 Rearranging and taking the limit  $d\tau \rightarrow 0$  gives the differential equation,

$$193 \quad \frac{\partial q}{\partial \tau} = q(\tau, t)(1 - q(0, t + \tau))\beta(\tau, t),$$

192 which can be solved alongside the boundary condition  $q(\infty, t) = 1$  to obtain

$$195 \quad q(\tau, t) = \exp\left(-\int_{\tau}^{\infty} (1 - q(0, t + \tilde{\tau}))\beta(\tilde{\tau}, t)d\tilde{\tau}\right).$$

194 In particular, we have

$$199 \quad q(0, t) = \exp\left(-\int_0^{\infty} (1 - q(0, t + \tau))\beta(\tau, t)d\tau\right),$$

196 (where we have relabelled  $\tilde{\tau}$  from the previous equation as  $\tau$ ) and the outbreak risk,  
 197  $p_{\text{outbreak}}(t) = 1 - q(0, t)$ , following the introduction of a single newly infected host at  
 198 time  $t$ , is therefore the largest solution between 0 and 1 of the equation

$$200 \quad p_{\text{outbreak}}(t) = 1 - \exp\left(-\int_0^{\infty} p_{\text{outbreak}}(t + \tau)\beta(\tau, t)d\tau\right). \quad (\text{S5})$$



201 We now derive the form of  $\beta(\tau, t)$  under delayed and/or time-limited regular  
 202 antigen testing. Specifically, we suppose that testing only takes place between  
 203 calendar times  $t_{\text{start}}$  and  $t_{\text{end}}$ , and that within that time period, the interval between  
 204 tests (for a specified individual) is exponentially distributed with mean  $T$ . A similar  
 205 argument to that in **Supplementary Note 1** can be used to show that the probability,  
 206  $p_d(\tau, t)$ , of an individual infected at calendar time  $t$  having been detected by time  
 207 since infection  $\tau < \tau_{\text{inc}}$  (where  $\tau_{\text{inc}}$  is the incubation period, with  $p_d(\tau, t) = 1$  for  $\tau \geq$   
 208  $\tau_{\text{inc}}$ ), is

$$214 \quad p_d(\tau, t) = 1 - \exp\left(-\frac{1}{T} \int_{\max\{0, \min\{\tau, t_{\text{start}}-t\}}^{\max\{0, \min\{\tau, t_{\text{end}}-t\}}} p_+(V(x)) dx\right),$$

209 where  $p_+(V(x))$  gives the probability that the result of a test taken at time since  
 210 infection  $x$  is positive, and the limits of the integral give the times since infection up to  
 211  $\tau$  over which the regular antigen testing policy is in place. The (calendar time-  
 212 dependent) expected infectiousness profile, accounting for different possible detection  
 213 times, is then

$$217 \quad \beta(\tau, t) = [\alpha_d p_d(\tau, t) + (1 - p_d(\tau, t))] \times \beta_u(\tau),$$

215 where  $\beta_u(\tau)$  is the infectiousness profile of an undetected individual at time since  
 216 infection  $\tau$ , and  $\alpha_d$  is the relative infectiousness of a detected host.

218 Finally, we consider a scenario in which regular antigen testing is introduced  
 219 after a delay of  $x_{\text{del}}$  from the time of the first infection (where we may expect  $x_{\text{del}}$  to  
 220 be at least the length of the incubation period), and is carried out over a finite duration  
 221 of time,  $x_{\text{dur}}$ . This scenario can be represented by taking  $t_{\text{start}} = 0$  and  $t_{\text{end}} = x_{\text{dur}}$   
 222 in the above, and then using Eq. (S5) to calculate  $p_{\text{outbreak}}(-x_{\text{del}})$  numerically. In this  
 223 scenario, for  $t \geq t_{\text{end}}$ ,  $p_{\text{outbreak}}(t)$  is simply the outbreak risk in the absence of  
 224 antigen testing (which is independent of  $t$  and can be calculated using Eq. (1) in the  
 225 main text). Eq. (S5) can therefore be solved iteratively on a grid of  $t \in [-x_{\text{del}}, t_{\text{end}}]$  by  
 226 considering successively lower  $t$  values and each time discretising the integral in Eq.  
 227 (S5) to calculate  $p_{\text{outbreak}}(t)$ , since Eq. (S5) allows  $p_{\text{outbreak}}(t)$  to be calculated once  
 228  $p_{\text{outbreak}}(x)$  is known for  $x > t$ .

229 We note that the above numerical scheme in fact gives the outbreak risk for a  
 230 grid of delays from 0 up to and including  $x_{\text{del}}$  (for a fixed duration,  $x_{\text{dur}}$ ). If there is no  
 231 delay, then it is convenient to instead take  $t_{\text{start}} = -\infty$  and  $t_{\text{end}} = 0$ , and to calculate  
 232  $p_{\text{outbreak}}(t)$  on a grid of negative  $t$  in order to obtain the outbreak risk for different

233 durations of regular antigen testing (although we note that this scenario is unlikely to  
234 be of real-world relevance, unless an infection occurs shortly before the scheduled  
235 end of an ongoing regular antigen testing program).

236

237 **Supplementary Note 5: Details of discrete-time stochastic outbreak simulation**  
238 **algorithm**

239 We verified our analytically derived estimates of the outbreak risk by comparing  
240 these estimates with corresponding estimates obtained through repeated simulation  
241 of a discrete-time, individual-based stochastic epidemic model (**Figure 2F** and  
242 **Supplementary Figure 2**). In this section, we describe the simulation model and how  
243 it was used to estimate the outbreak risk.

244 Prior to running each outbreak simulation, we first determined and discretised  
245 the within-host dynamics that each individual,  $i$ , in the population would follow if ever  
246 infected, according to the following steps:

- 247 1. Determine the individual's (continuous-time) viral load profile,  $V^{(i)}(\tau)$ , where  $\tau$  is  
248 the time since infection, and their incubation period,  $\tau_{\text{inc}}^{(i)}$  (in **Figure 2F** and  
249 **Supplementary Figure 2**, we assumed homogeneous within-host dynamics, but  
250 in principle heterogeneity could be included).
- 251 2. Calculate the individual undetected infectiousness profile,  $\beta_u^{(i)}(\tau)$ , and probability  
252 of a test taken at time since infection  $\tau$  giving a positive result,  $p_+^{(i)}(\tau)$ , as  
253 described in the main text (note that  $p_+^{(i)}$  is here defined as a function of time since  
254 infection rather than viral load).
- 255 3. Sample the (potential) time,  $r^{(i)}$ , from the start of the day of infection to the exact  
256 (potential) infection time, uniformly between zero and one day.
- 257 4. For each day since infection,  $\tau_{\text{discr}} \geq 1$  (where the day of infection is denoted day  
258 0), calculate the discretised infectiousness,  $\beta_{u,\text{discr}}^{(i)}(\tau_{\text{discr}})$ , as the average value  
259 of  $\beta_u^{(i)}(\tau)$  between times since infection  $(\tau_{\text{discr}} - r_i)$  and  $(\tau_{\text{discr}} - r_i + 1)$ . Note  
260 that implicit in our simulation algorithm is the assumption that hosts cannot  
261 transmit the pathogen on the day of infection (i.e.  $\beta_{u,\text{discr}}^{(i)}(0) = 0$ ).
- 262 5. Calculate the probability,  $p_{+,\text{discr}}^{(i)}(\tau_{\text{discr}}) = p_+^{(i)}(\tau_{\text{discr}} - r_i)$ , of a test taken at the  
263 start of day of infection  $\tau_{\text{discr}} \geq 1$  giving a positive result.
- 264 6. Calculate the discretised incubation period,  $\tau_{\text{inc,discr}}^{(i)} = \left\lceil \left( r^{(i)} + \tau_{\text{inc}}^{(i)} \right) \right\rceil$ . Note that we  
265 only considered a single continuous incubation period, which exceeded 1, but if a  
266 non-trivial distribution is used, then it should be truncated to take values of at least  
267 1 in order to avoid symptom onset occurring on the day of infection.

268 7. Calculate the relative infectiousness on the day of symptom onset (assuming the  
 269 host is not detected before developing symptoms),  $\alpha_o^{(i)}$ , chosen to ensure that the  
 270 continuous- and discrete-time infectiousness profiles give the same expected  
 271 number of transmissions during this day (under the assumption of isolation  
 272 immediately following the exact symptom onset time).

273 8. Calculate the total duration of infection (up to loss of infectiousness),  $\tau_{\text{rec,discr}}^{(i)}$ , as  
 274 the earliest day of infection for which  $\beta_u^{(i)}(\tau_{\text{discr}}) = 0$  for all  $\tau_{\text{discr}} \geq \tau_{\text{rec,discr}}^{(i)}$ .

275 An example discretised infectiousness profile (without regular antigen testing) is  
 276 shown in **Supplementary Figure 2A**.

277 In the simulation algorithm, individuals are classified as being in one of the  
 278 following states on each day: susceptible ( $S$ ), infected but undetected ( $U$ ), infected  
 279 with symptom onset on the current day (and not detected prior to onset;  $O$ ), infected  
 280 and detected ( $D$ ), or recovered (specifically, no longer infectious following an infection;  
 281  $R$ ). The  $O$  stage is included to allow for symptom onset (and therefore detection)  
 282 occurring at any time of day, whereas for simplicity we assumed that regular antigen  
 283 testing takes place only at the start of each day. The status of individual  $i$  (at a given  
 284 step in the simulation) is denoted by  $Y^{(i)} \in \{S, U, O, D, R\}$ . We write, for example,  
 285  $\mathbf{1}_S(Y^{(i)})$ , to denote the indicator function that takes the value 1 if  $Y^{(i)} = S$ , and 0  
 286 otherwise. However, we emphasise that the simulation model is not a compartmental  
 287 model, since different individuals of the same status are not treated identically.

288 Now, the simulation algorithm has the following inputs:

- 289 • The population size,  $N$ .
- 290 • The relative infectiousness of detected hosts,  $\alpha_d$ .
- 291 • The relative susceptibility,  $\eta^{(i)}$ , of each individual,  $i$  (note that we assumed  
 292 homogeneous susceptibility in our analyses, i.e.,  $\eta^{(i)} = 1$  for each  $i$ ).
- 293 • The quantities  $\beta_{u,\text{discr}}^{(i)}(\tau_{\text{discr}})$ ,  $p_{+,\text{discr}}^{(i)}(\tau_{\text{discr}})$ ,  $\tau_{\text{inc,discr}}^{(i)}$ ,  $\alpha_o^{(i)}$  and  $\tau_{\text{rec,discr}}^{(i)}$ , which  
 294 characterise discretised individual within-host dynamics (as described above).
- 295 • The number of antigen tests,  $Z^{(i)}(t)$ , conducted by individual  $i$  at the start of day  
 296  $t$  of the simulation (for each positive integer value of  $t$ ). We considered two  
 297 possibilities:
  - 298 i. In **Figure 2F**, we sampled  $Z^{(i)}(t)$  from a Poisson distribution with mean  $1/T$   
 299 (independently for each individual and each day, where a range of  $T$  values

300 were considered). This is consistent with our analytic outbreak risk derivation  
 301 (since an exponentially distributed duration between tests, with mean  $T$   
 302 (measured in days), leads to a Poisson-distributed number of tests being taken  
 303 each day, with mean  $1/T$ , although note that tests may be taken at any time of  
 304 day in the analytic approach), but leads to the possibility of more than one daily  
 305 test.

306 ii. In **Supplementary Figure 3B**, we instead considered a fixed (constant) gap of  
 307 length  $T$  between days on which a test is taken. For each individual, we sampled  
 308 the first day of the simulation on which a test is conducted uniformly between 1  
 309 and  $T$  (independently for each individual).

310

311 The outbreak simulation algorithm consists of the following steps:

- 312 1. Initialise the time at  $t = 0$  days and the status of each host at  $Y^{(i)} = S$ .
- 313 2. Sample a single initial infected host,  $i$ , according to the relative susceptibilities,  $\eta_j$   
 314 (i.e., host  $j$  is selected with probability  $\eta_j / \sum_{k=1}^N \eta_k$ ). Set  $Y^{(i)} = U$  and the infection  
 315 time,  $t_{\text{inf}}^{(i)} = 0$ .
- 316 3. While  $\sum_{i=1}^n \mathbf{1}_{\{U,O,D\}}(Y^{(i)}) > 0$  (i.e., while the number of active infections is greater  
 317 than zero), repeat the following steps:
  - 318 a. Increase the simulation time,  $t$ , by 1 day (i.e., set  $t = (t + 1)$ ).
  - 319 b. For each  $i$  such that both  $Y^{(i)} \in \{U, O, D\}$  and  $(t_{\text{inf}}^{(i)} + \tau_{\text{rec, discr}}^{(i)}) = t$ , set  $Y^{(i)} = R$   
 320 (recovery/loss of infectiousness).
  - 321 c. For each  $i$  such that  $Y^{(i)} = O$ , set  $Y^{(i)} = D$  (day after symptom onset).
  - 322 d. For each  $i$  such that  $Y^{(i)} = U$ , carry out the following steps (testing process):
    - 323 i. Generate a random number,  $r$ , uniformly distributed between 0 and 1.
    - 324 ii. If  $r < 1 - \left(1 - p_{+, \text{discr}}^{(i)}(t - t_{\text{inf}}^{(i)})\right)^{Z^{(i)}(t)}$ , set  $Y^{(i)} = D$ .
  - 325 e. For each  $i$  such that both  $Y^{(i)} = U$  and  $(t_{\text{inf}}^{(i)} + \tau_{\text{inc, discr}}^{(i)}) = t$ , set  $Y^{(i)} = O$   
 326 (symptom onset).
  - 327 f. Calculate the total infectious pressure exerted on each susceptible individual  
 328 over the current simulation day,

$$329 \quad \lambda(t) = \frac{1}{N} \left( \sum_{j=1}^N \left( \mathbf{1}_U(Y^{(j)}) + \alpha_o^{(j)} \mathbf{1}_O(Y^{(j)}) + \alpha_d \mathbf{1}_D(Y^{(j)}) \right) \beta_{\text{u, discr}}^{(j)}(t - t_{\text{inf}}^{(j)}) \right).$$

- 330 g. For each  $i$  such that  $Y^{(i)} = S$ , carry out the following steps (transmission  
331 process):
- 332 i. Generate a random number,  $r$ , uniformly distributed between 0 and 1.
  - 333 ii. If  $r < 1 - \exp(-\eta^{(i)}\lambda(t))$ , set  $Y^{(i)} = U$  and  $t_{inf}^{(i)} = t$ .

334 For each testing scenario considered, we carried out 100,000 model  
335 simulations in a population of  $N = 1,000$  individuals. The outbreak risk was estimated  
336 as the proportion of model simulations in which the total number of individuals ever  
337 infected exceeded 10% of the total population (see **Supplementary Figure 2**).

338

339 **Supplementary Table 1**

<b>Parameters</b>	<b>Symbol</b>	<b>Unit</b>	<b>Value</b>	<b>How obtained</b>
Rate constant for virus infection	$b$	(copies/ml) <sup>-1</sup> day <sup>-1</sup>	$1.43 \times 10^{-7}$	Fitted to viral load data
Maximum rate constant for viral replication	$\gamma$	day <sup>-1</sup>	5.64	Fitted to viral load data
Death rate of infected cells	$\delta$	day <sup>-1</sup>	1.21	Fitted to viral load data
Incubation period	$\tau_{inc}$	days	4.60	Fitted to viral load data
Initial quantity of free virus	$V(0)$	copies/ml	0.01	Assumed (3)
Standard deviation of error in log viral load measurements	$\sigma$	log <sub>10</sub> (copies/ml)	0.87	Fitted to viral load data
Limit of infectiousness and detection limit of antigen test	$V^*$	log <sub>10</sub> (copies/ml)	3.30	Minimum viral load for culturable virus for the omicron variant from (4)
Relative infectiousness of detected hosts	$\alpha_d$	---	0.26	Estimated value for the delta variant from (5) (other values considered in <b>Figure 3</b> )
Reproduction number at time of introduction in absence of regular antigen testing	$R_0$	---	1.5	Assumed (other values considered in <b>Figure 3</b> and elsewhere)
Mean interval between antigen tests when regular testing conducted	$T$	days	2	Assumed ( <b>Figure 2BC</b> only; a range of values considered elsewhere)

340 **Supplementary Table 1. Baseline parameter values used in our analyses.** These parameter values were used in our analyses except where explicitly stated  
341 otherwise. Note that the values of the within-host model parameters  $b$ ,  $\gamma$ ,  $\delta$  and  $\tau_{inc}$  here are population median estimates (fixed effects); estimates of random  
342 effects are given in **Supplementary Table 2** (the random effects were used to account for heterogeneous within-host dynamics in **Figure 4**).  
343

344 **Supplementary Table 2**

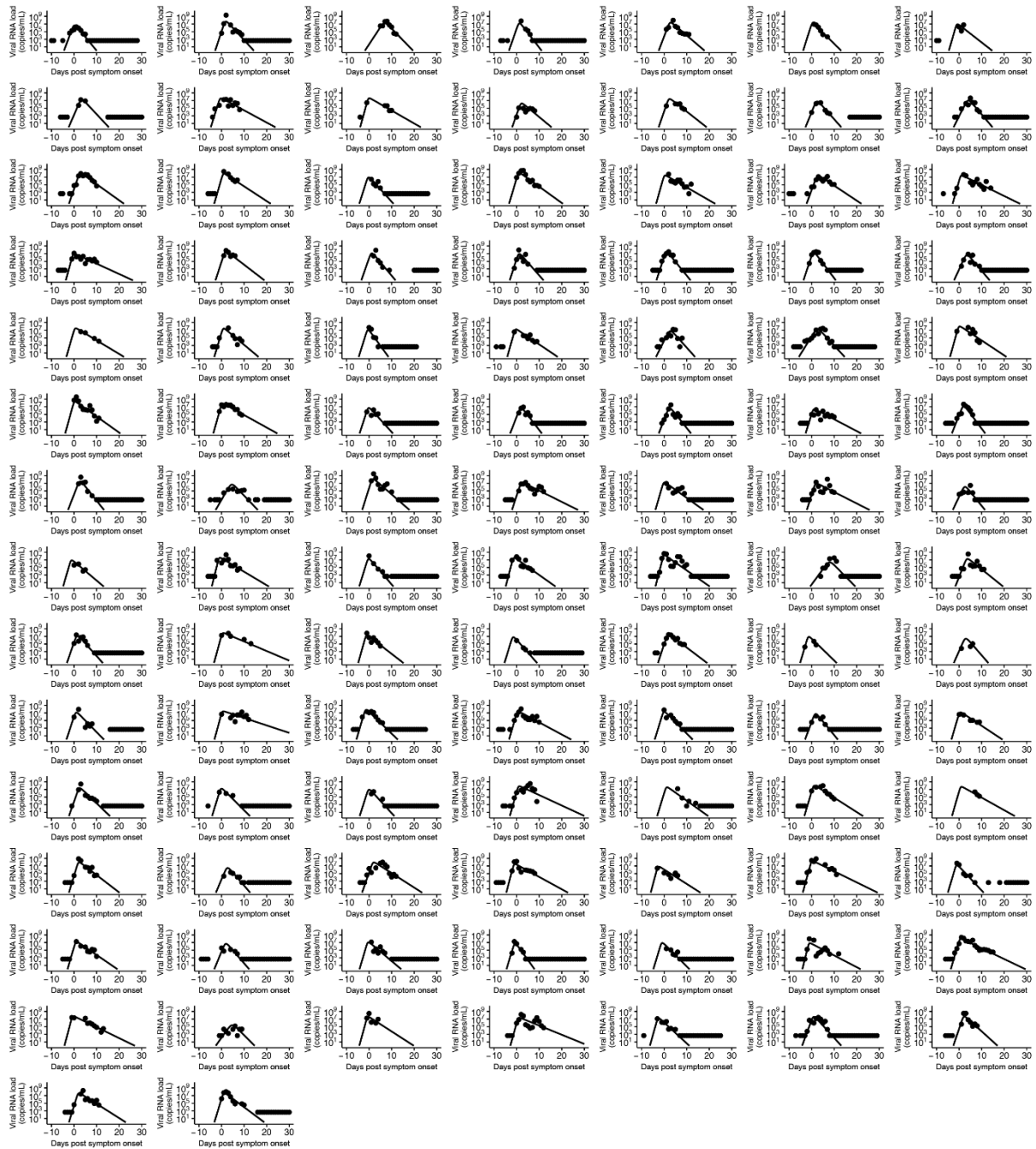
<b>Parameters</b>	<b>Symbol</b>	<b>Value</b>
Random effect for rate constant for virus infection	$\omega_b$	1.33
Random effect for maximum rate constant for viral replication	$\omega_\gamma$	0.15
Random effect for death rate of infected cells	$\omega_\delta$	0.54
Random effect for incubation period	$\omega_{\tau_{inc}}$	0.29

345 **Supplementary Table 2. Estimated random effects for within-host model parameters.** The estimated quantities correspond to the standard deviation of  
 346 the natural logarithm of the parameters  $b$ ,  $\gamma$ ,  $\delta$  and  $\tau_{inc}$  between different individuals (see the section “Within-host model and parameter estimation” of  
 347 **Methods** in the main text for details; population parameter values (fixed effects) and units are given in **Supplementary Table 1**).

348

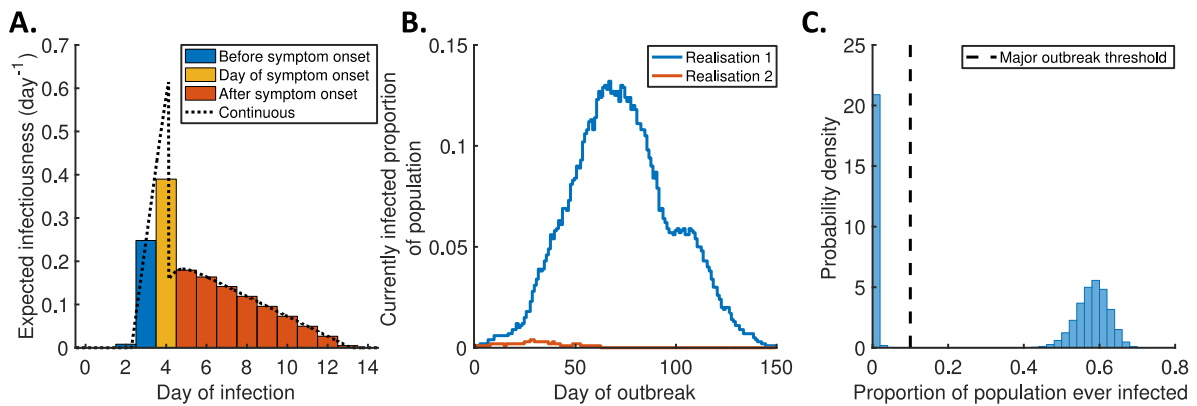


349 **Supplementary Figure 1**



350  
351 **Supplementary Figure 1. Reconstructed viral dynamics for individual hosts.** Individual-level  
352 model fits to longitudinal SARS-CoV-2 viral load data using a target cell-limited within-host model are  
353 shown (see the section “Within-host model and parameter estimation” of **Methods** in the main text).  
354 Overall, we used data from 521 individuals with omicron variant infections (6) to characterise SARS-  
355 CoV-2 viral dynamics; here, individual model fits are shown for 100 randomly chosen individuals. In  
356 each panel (corresponding to a single individual), the dots indicate the measured viral load data, and  
357 the solid curves the estimated viral load at different times relative to symptom onset.

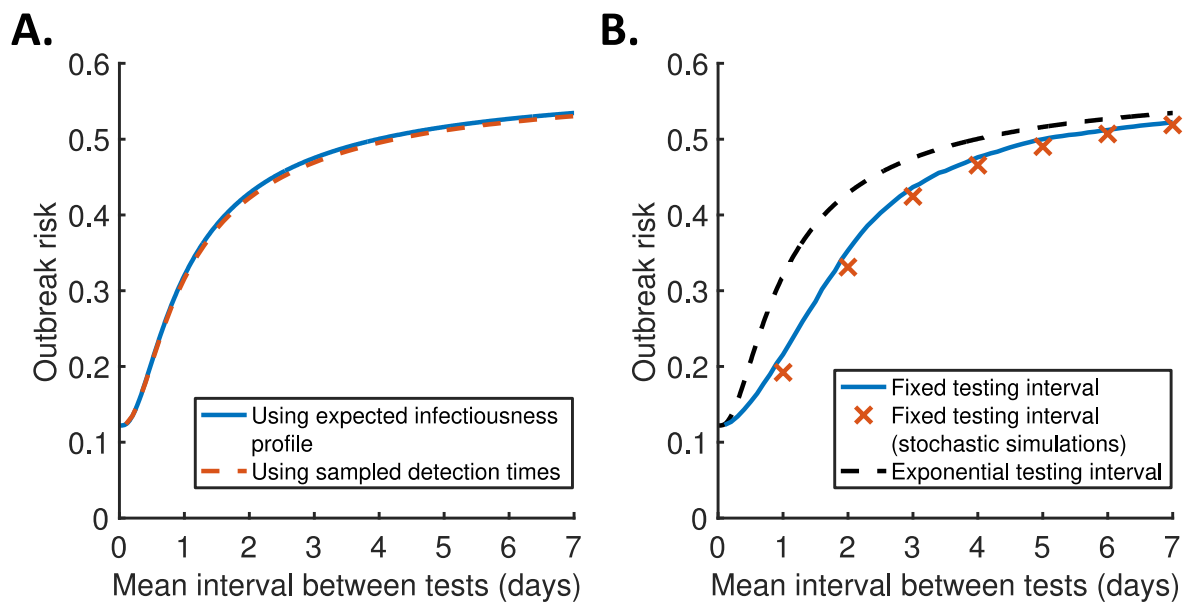
358 **Supplementary Figure 2**



359

360 **Supplementary Figure 2. Alternative estimation of the outbreak risk using a discrete-time,**  
 361 **individual-based, stochastic outbreak simulation model. A.** Example discretised infectiousness  
 362 profile of a single infected host when regular antigen testing does not take place. **B.** The output of two  
 363 realisations of the stochastic outbreak simulation model. **C.** Histogram of total outbreak sizes (i.e., the  
 364 total proportion of the population ever infected during the outbreak) over 100,000 model simulations.  
 365 The vertical black dashed line indicates the assumed threshold for a major outbreak of 10% of the  
 366 population being infected. Here (without regular antigen testing), the estimated outbreak risk (i.e., the  
 367 proportion of model simulations classified as major outbreaks) is 0.58. Details of the stochastic  
 368 simulation model are given in **Supplementary Note 5**.

369 **Supplementary Figure 3**



370

371 **Supplementary Figure 3. Effect of details of implementation of antigen testing in our modelling**

372 **approach on the outbreak risk under regular antigen testing. A.** The outbreak risk for different

373 values of the (mean) interval between antigen tests, comparing our default analytic approach using an

374 expected infectiousness profile that averages over the individual infectiousness profiles of hosts with

375 different detection times (blue), and a more complex approach in which variations in detection times

376 are accounted for directly by sampling the detection times of a large number of individuals and using

377 Eq. (2) to calculate the outbreak risk (red dashed). **B.** The outbreak risk for different values of the (mean)

378 interval between tests, comparing our default analytic approach assuming an exponentially distributed

379 interval between tests (black dashed), and both the analytic (blue) and simulation-based approaches

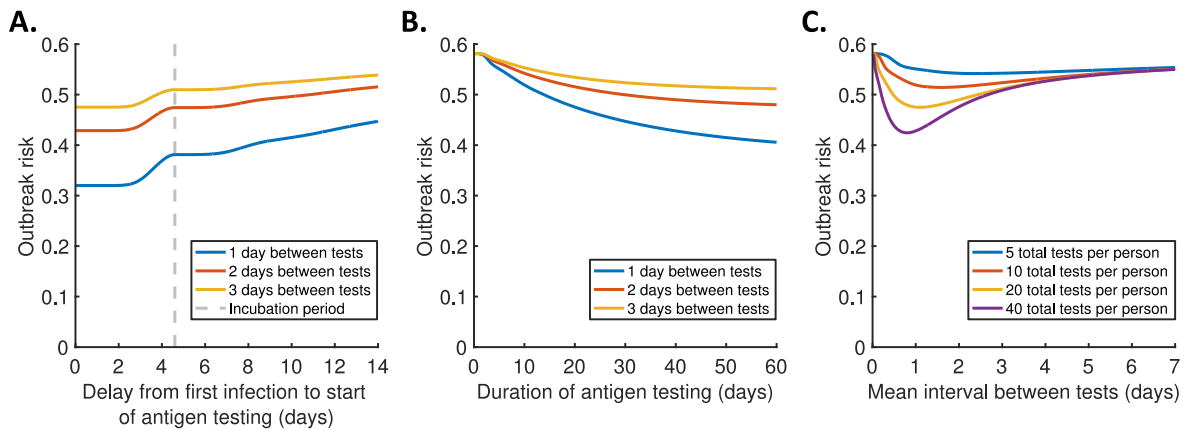
380 (red crosses) under the alternative assumption of a fixed (constant) interval between tests. Note that in

381 the analytic approach with a fixed interval, we used sampled detection times since the expected

382 infectiousness profile was not readily available in this case.

383

384 **Supplementary Figure 4**



385

386 **Supplementary Figure 4. Effect of delayed and/or time-limited antigen testing.** A. The outbreak  
387 risk for different delays from the time of the first infection to the introduction of regular antigen testing,  
388 assuming an infinite duration of testing, and either 1 (blue), 2 (red) or 3 days (orange) between tests  
389 (on average). B. The outbreak risk for different durations of antigen testing, assuming a delay of one  
390 incubation period (4.6 days) from the first infection to the start of testing (i.e., testing starts following the  
391 detection of a symptomatic case), and either 1 (blue), 2 (red) or 3 days (orange) between tests (on  
392 average). C. The outbreak risk for different values of the (mean) interval between tests with a fixed total  
393 of 5 (blue), 10 (red), 20 (orange) or 40 (purple) tests available to each individual (on average), assuming  
394 a delay of one incubation period from the first infection to the start of testing.

395 **Supplementary References**

- 396 1. van den Driessche, P. Reproduction numbers of infectious disease models. *Infect Dis*  
397 *Model* **2**, 288–303 (2017).
- 398 2. Norris, J. R. *Markov Chains. Cambridge Series in Statistical and Probabilistic*  
399 *Mathematics* (Cambridge University Press, 1997).
- 400 3. Jeong, Y. D. *et al.* Designing isolation guidelines for COVID-19 patients with rapid  
401 antigen tests. *Nature Communications* 2022 13:1 **13**, 4910 (2022).
- 402 4. Boucau, J. *et al.* Duration of shedding of culturable virus in SARS-CoV-2 omicron  
403 (BA.1) infection. *New England Journal of Medicine* **387**, 275–277 (2022).
- 404 5. Hart, W. S. *et al.* Generation time of the alpha and delta SARS-CoV-2 variants: an  
405 epidemiological analysis. *Lancet Infect Dis* **22**, 603–610 (2022).
- 406 6. Hay, J. A. *et al.* Quantifying the impact of immune history and variant on SARS-CoV-2  
407 viral kinetics and infection rebound: a retrospective cohort study. *Elife* **11**, e81849  
408 (2022).
- 409