

Supplementary Information for ‘Whole blood DNA methylation changes are associated with anti-TNF drug concentration in patients with Crohn’s disease’

Table of Contents

Supplementary Table 1: IBD Pharmacogenetics Study Group	2
Supplementary Table 2: Distribution of samples by individual participant and study visits.....	10
Supplementary Table 3: Gene ontology (GO) terms of differentially methylated probes associated with anti-TNF treatment.....	11
Supplementary Table 4: Differentially methylated probes over time following infliximab treatment compared to adalimumab treatment regardless of response.....	16
Supplementary Table 5: Differentially methylated probes with shared associations to other common traits in the EWAS catalog.....	17
Supplementary Table 6: Differentially methylated probes at baseline associated with both drug concentration at week 14 and primary non-response.....	21
Supplementary Table 7: Differentially methylated probes associated with anti-TNF primary non-response over time	22
Supplementary Figure 1: Sample flow through the study.....	23
Supplementary Figure 2: Density plot of anti-TNF drug concentration at week 14 stratified by primary non-response.....	24
Supplementary Figure 3: Change in DNA methylation smoking score over 54 weeks.....	25
Supplementary Figure 4: Change in epigenetic age over 54 weeks.....	26
Supplementary Figure 5: Genomic location of differentially methylated probes associated with anti-TNF treatment over time	27
Supplementary Figure 6: Bar chart of the top 20 Gene Ontology terms of differentially methylated probes associated with anti-TNF treatment	28

Supplementary Table 1: IBD Pharmacogenetics Study Group

All UK gastroenterologists were invited to participate in the PANTS study which was promoted through the UK National Institute for Health Research and the British Society of Gastroenterology.

Hospital or Trust name	City	Name	Job Title
Tameside Hospital NHS Foundation Trust	Ashton U Lyne	Dr Vinod Patel	Consultant Gastroenterologist
Basildon and Thurrock University Hospitals NHS Foundation Trust	Basildon	Dr Zia Mazhar	Consultant Gastroenterologist
Hampshire Hospitals NHS Foundation Trust	Basingstoke	Dr Rebecca Saich	Consultant Gastroenterologist
Royal United Hospital	Bath	Dr Ben Colleypriest	Consultant Gastroenterologist
Ulster Hospital	Belfast	Dr Tony C Tham	Consultant Gastroenterologist
University Hospital's Birmingham NHS Foundation Trust	Birmingham	Dr Tariq H Iqbal	Consultant Gastroenterologist
East Lancashire NHS Teaching Trust	Blackburn	Dr Vishal Kaushik	Consultant Gastroenterologist
Blackpool Teaching Hospitals NHS Foundation Trust	Blackpool	Dr Senthil Murugesan	Consultant Gastroenterologist
Bolton NHS Trust	Bolton	Dr Salil Singh	Consultant Gastroenterologist
Royal Bournemouth Hospital	Bournemouth	Dr Sean Weaver	Consultant Gastroenterologist
Bradford Teaching Hospitals Foundation Trust - (St Lukes Hospital & Bradford Royal Infirmary)	Bradford	Dr Cathryn Preston	Consultant Gastroenterologist
Brighton and Sussex University Hospitals NHS Trust	Brighton	Dr Assad Butt	Paediatric Consultant Gastroenterologist
Brighton and Sussex University Hospitals NHS Trust	Brighton	Dr Melissa Smith	Consultant Gastroenterologist
University Hospitals Bristol NHS Foundation Trust	Bristol	Dr Dharamveer Basude	Consultant Paediatric Gastroenterologist
University Hospitals Bristol NHS Foundation Trust	Bristol	Dr Amanda Beale	Consultant Gastroenterologist

Frimley Park Hospital NHS Foundation Trust	Camberley	Dr Sarah Langlands	Consultant Gastroenterologist
Frimley Park Hospital NHS Foundation Trust	Camberley	Dr Natalie Direkze	Consultant gastroenterologist
Cambridge University Hospitals NHS Foundation Trust	Cambridge	Dr Miles Parkes	Consultant Gastroenterologist
Cambridge University Hospitals NHS Foundation Trust	Cambridge	Dr Franco Torrente	Consultant Paediatric Gastroenterologist
Cambridge University Hospitals NHS Foundation Trust	Cambridge	Dr Juan De La Revella Negro	Research fellow
North Cumbria University Hospitals NHS Trust	Carlisle	Dr Chris Ewen MacDonald	Consultant Gastroenterologist
Ashford & St Peter's Hospitals NHS Foundation Trust	Chertsey	Dr Stephen M Evans	Consultant Gastroenterologist
St Peter's Hospital	Chertsey	Dr Anton V J Gunasekera	Consultant Gastroenterologist
Ashford & St Peter's Hospitals NHS Foundation Trust	Chertsey	Dr Alka Thakur	Paediatric Consultant
Chesterfield Royal NHS Foundation Trust	Chesterfield	Dr David Elphick	Consultant Gastroenterologist
Colchester Hospital University NHS Foundation Trust	Colchester	Dr Achuth Shenoy	Consultant Gastroenterologist
University Hospitals Coventry and Warwickshire NHS Trust	Coventry	Prof Chuka U Nwokolo	Consultant Gastroenterologist
County Durham and Darlington NHS Foundation Trust	Darlington	Dr Anjan Dhar	Consultant Gastroenterologist & Hon. Clinical Lecturer
Derby Hospital NHS Foundation NHS Trust	Derby	Dr Andrew T Cole	Consultant Gastroenterologist
Doncaster and Bassetlaw Hospitals NHS Foundation Trust	Doncaster	Dr Anurag Agrawal	Consultant Gastroenterologist
Dorset County Hospital NHS Foundation Trust	Dorchester	Dr Stephen Bridger	Consultant Gastroenterologist
Dorset County Hospitals Foundation Trust	Dorchester	Dr Julie Doherty	Paediatric Consultant

Dudley Group NHS Foundation Trust	Dudley	Dr Sheldon C Cooper	Consultant Gastroenterologist
Russells Hall Hospital, The Dudley Group NHS Foundation Trust	Dudley	Dr Shanika de Silva	Consultant Gastroenterologist
Ninewells Hospital & Medical School	Dundee	Dr Craig Mowat	Consultant Gastroenterologist
East Sussex Healthcare Trust	Eastbourne	Dr Phillip Mayhead	Consultant Gastroenterologist
NHS Lothian	Edinburgh	Dr Charlie Lees	Consultant Gastroenterologist and Honorary Senior Lecturer
NHS Lothian	Edinburgh	Dr Gareth Jones	Research fellow
Royal Devon and Exeter NHS Foundation Trust	Exeter	Dr Tariq Ahmad	Consultant Gastroenterologist
Royal Devon and Exeter NHS Foundation Trust	Exeter	Dr James W Hart	Consultant Paediatrician
Glasgow Royal Infirmary	Glasgow	Dr Daniel R Gaya	Consultant Gastroenterologist
Royal Hospital for Children	Glasgow	Prof Richard K Russell	Consultant Paediatric Gastroenterologist
Royal Hospital for Children	Glasgow	Dr Lisa Gervais	Research fellow
Gloucestershire Hospitals NHS Trust	Gloucester	Dr Paul Dunckley	Consultant Gastroenterologist
United Lincolnshire Hospitals NHS Trust	Grantham	Dr Tariq Mahmood	Consultant Gastroenterologist
James Paget University Hospitals NHS Foundation Trust	Great Yarmouth	Dr Paul J R Banim	Consultant Gastroenterologist
Calderdale and Huddersfield NHS Trust	Halifax	Dr Sunil Sonwalkar	Consultant Gastroenterologist
Princess Alexandra Hospital NHS Trust	Harlow	Dr Deb Ghosh	Consultant Gastroenterologist
Princess Alexandra Hospital NHS Trust	Harlow	Dr Rosemary H Phillips	Consultant Gastroenterologist
Hull and East Yorkshire NHS Trust	Hull	Dr Amer Azaz	Paediatric Consultant Gastroenterologist

Hull and East Yorkshire NHS Trust	Hull	Dr Shaji Sebastian	Consultant Gastroenterologist
Airedale NHS Foundation Trust	Keighley	Dr Richard Shenderey	Consultant Gastroenterologist
Crosshouse Hospital	Kilmarnock	Dr Lawrence Armstrong	Consultant Paediatrician
Crosshouse Hospital	Kilmarnock	Dr Claire Bell	Research fellow
The Queen Elizabeth Hospital NHS Foundation Trust	Kings Lynn	Dr Radhakrishnan Hariraj	Consultant Gastroenterologist
Kingston Hospital NHS Trust	Kingston upon Thames	Dr Helen Matthews	Consultant Gastroenterologist
NHS Fife	Kirkcaldy	Dr Hasnain Jafferbhoy	Consultant Gastroenterologist
Leeds Teaching Hospitals NHS Trust	Leeds	Dr Christian P Selinger	Consultant Gastroenterologist
Leeds Teaching Hospitals NHS Trust	Leeds	Dr Veena Zamvar	Paediatric Consultant Gastroenterologist
University Hospitals of Leicester NHS Trust	Leicester	Prof John S De Caestecker	Consultant Gastroenterologist
University Hospitals of Leicester NHS Trust	Leicester	Dr Anne Willmott	Paediatric Consultant Gastroenterologist
Mid Cheshire Hospitals NHS Foundation Trust	Leighton	Mr Richard Miller	Research Nurse
United Lincolnshire Hospitals NHS Trust	Lincoln	Dr Palani Sathish Babu	Consultant Gastroenterologist
Alder Hey Childrens Hospital	Liverpool	Dr Christos Tzivinikos	Consultant Paediatric Gastroenterologist
University College London Hospitals NHS Foundation Trust	London	Dr Stuart L Bloom	Consultant Gastroenterologist
Kings College Hospital NHS Foundation Trust	London	Dr Guy Chung-Faye	Consultant Gastroenterologist
Royal London Childrens Hospital, Barts Health NHS Trust	London	Prof Nicholas M Croft	Paediatric Consultant Gastroenterologist
Chelsea & Westminster Hospital	London	Dr John ME Fell	Consultant Paediatric Gastroenterologist

Chelsea and Westminster Hospital NHS Foundation	London	Dr Marcus Harbord	Consultant Gastroenterologist
North West London Hospitals NHS Trust	London	Dr Ailsa Hart	Consultant Gastroenterologist
Kings College Hospital NHS Foundation Trust	London	Dr Ben Hope	Consultant Paediatrician
Guys & St Thomas' NHS Foundation Trust	London	Dr Peter M Irving	Consultant Gastroenterologist
Barts and The London NHS Trust	London	Prof James O Lindsay	Consultant Gastroenterologist
Guy's and St Thomas' NHS trust	London	Dr Joel E Mawdsley	Gastroenterology Consultant
Lewisham and Greenwich Healthcare NHS Trust	London	Dr Alistair McNair	Consultant Gastroenterologist
Chelsea and Westminster Hospital NHS Foundation	London	Dr Kevin J Monahan	Consultant Gastroenterologist
Royal Free London NHS Foundation Trust	London	Dr Charles D Murray	Consultant Gastroenterologist
Imperial College Healthcare NHS Trust	London	Prof Timothy Orchard	Consultant Gastroenterologist
St George's Healthcare NHS Trust	London	Dr Thankam Paul	Paediatric Consultant Gastroenterologist
St George's Healthcare NHS Trust	London	Dr Richard Pollok	Reader and Consultant Gastroenterologist
Great Ormond Street Hospital for Children NHS Foundation Trust	London	Dr Neil Shah	Consultant Gastroenterologist
North West London Hospitals NHS Trust	London	Dr Sonia Bouri	Research fellow
The Luton & Dunstable University Hospital	Luton	Dr Matt W Johnson	Consultant Gastroenterologist
Luton and Dunstable Hospital Foundation Trust	Luton	Dr Anita Modi	Paediatric Consultant with Allergy and Gastroenterology interest
The Luton & Dunstable University Hospital	Luton	Dr Kasamu Dawa Kabiru	Research fellow

Maidstone and Tunbridge Wells NHS Trust	Maidstone	Dr B K Baburajan	Consultant Gastroenterologist
Maidstone and Tunbridge Wells NHS Trust	Maidstone	Prof Bim Bhaduri	Paediatric Consultant Gastroenterologist
Manchester University Hospitals NHS Foundation Trust	Manchester	Dr Andrew Adebayo Fagbemi	Consultant Gastroenterologist
Central Manchester University Hospitals NHS Foundation Trust	Manchester	Dr Scott Levison	Consultant Gastroenterologist
The Pennine Acute Hospitals NHS Trust	Manchester	Dr Jimmy K Limdi	Consultant Gastroenterologist
Manchester University NHS Foundation Trust, Wythenshawe Hospital	Manchester	Dr Gill Watts	Consultant Gastroenterologist
Sherwood Forest Hospitals NHS Foundation Trust	Mansfield	Dr Stephen Foley	Consultant Gastroenterologist
South Tees Hospital NHS Foundation Trust	Middlesbrough	Dr Arvind Ramadas	Consultant Gastroenterologist
Milton Keynes Hospital NHS Foundation Trust	Milton Keynes	Dr George MacFaul	Consultant Gastroenterologist
Newcastle Upon Tyne Hospital Trust	Newcastle	Dr John Mansfield	Consultant Gastroenterologist
Isle of Wight NHS Foundation Trust	Newport	Dr Leonie Grellier	Consultant Gastroenterologist
Norfolk & Norwich University Hospital NHS Foundation Trust	Norwich	Dr Mary-Anne Morris	Consultant Paediatric Gastroenterologist
Norfolk & Norwich University Hospital NHS Foundation Trust	Norwich	Dr Mark Tremelling	Consultant Gastroenterologist
Nottingham University Hospitals NHS Trust	Nottingham	Prof Chris Hawkey	Consultant Gastroenterologist
Nottingham University Hospitals NHS Trust	Nottingham	Dr Sian Kirkham	Consultant Paediatric Gastroenterologist
Nottingham University Hospitals NHS Trust	Nottingham	Dr Charles PJ Charlton	Consultant gastroenterologist
Oxford University Hospitals NHS Foundation Trust	Oxford	Dr Astor Rodrigues	Paediatric Consultant Gastroenterologist

Oxford University Hospitals NHS Trust	Oxford	Prof Alison Simmons	Consultant Gastroenterologist
Plymouth Hospitals NHS Trust	Plymouth	Dr Stephen J Lewis	Consultant Gastroenterologist
Poole Hospital NHS Foundation Trust	Poole	Dr Jonathon Snook	Consultant Gastroenterologist
Poole Hospital NHS Foundation Trust	Poole	Dr Mark Tighe	Paediatric Consultant with interest in Oncology and Gastroenterology
Portsmouth Hospitals NHS Trust	Portsmouth	Dr Patrick M Goggin	Consultant Gastroenterologist
Royal Berkshire NHS Foundation Trust	Reading	Dr Aminda N De Silva	Consultant Gastroenterologist
Salford Royal NHS Foundation Trust	Salford	Prof Simon Lal	Consultant Gastroenterologist
Shrewsbury and Telford Hospital NHS Trust	Shrewsbury	Dr Mark S Smith	Consultant Gastroenterologist
South Tyneside NHS Foundation Trust	South Shields	Dr Simon Panter	Consultant Gastroenterologist
Southampton University Hospitals NHS Trust	Southampton	Dr Fraser Cummings	Consultant Gastroenterologist
Southampton University Hospitals NHS Trust	Southampton	Dr Suranga Dharmisari	Research fellow
East and North Herts NHS Trust	Stevenage	Dr Martyn Carter	Consultant Gastroenterologist
NHS Forth Valley	Stirling	Dr David Watts	Consultant Gastroenterologist
Stockport NHS foundation Trust	Stockport	Dr Zahid Mahmood	Consultant Gastroenterologist
North Tees and Hartlepool NHS Foundation Trust	Stockton	Dr Bruce McLain	Paediatric Consultant Gastroenterologist
University Hospitals of North Staffordshire	Stoke-on Trent	Dr Sandip Sen	Consultant Gastroenterologist
University Hospitals of North Midlands NHS Trust	Stoke-on-Trent	Dr Anna J Pigott	Consultant Paediatric Gastroenterologist
City Hospitals Sunderland NHS Foundation Trust	Sunderland	Dr David Hobday	Consultant Gastroenterologist

Taunton and Somerset NHS Foundation Trust	Taunton	Dr Emma Wesley	Consultant Gastroenterologist
South Devon Healthcare NHS Foundation Trust	Torquay	Dr Richard Johnston	Consultant Gastroenterologist
South Devon Healthcare NHS Foundation Trust	Torquay	Dr Cathryn Edwards	Consultant gastroenterologist
Royal Cornwall Hospitals NHS Trust	Truro	Dr John Beckly	Consultant Gastroenterologist
Mid Yorkshire Hospitals NHS Trust	Wakefield	Dr Deven Vani	Consultant Physician & Gastroenterologist
Warrington& Halton NHS Foundation	Warrington	Dr Subramaniam Ramakrishnan	Consultant Gastroenterologist
West Hertfordshire Hospitals NHS Trust	Watford	Dr Rakesh Chaudhary	Consultant Gastroenterologist
Sandwell and West Birmingham Hospitals NHS Trust	West Bromwich	Dr Nigel J Trudgill	Consultant Gastroenterologist
Sandwell and West Birmingham Hospitals NHS Trust	West Bromwich	Dr Rachel Cooney	Consultant gastroenterologist
Weston Area Health NHS Trust	Weston-Super-Mare	Dr Andy Bell	Consultant Gastroenterologist
Royal Albert Edward Infirmary, Wrightington, Wigan & Leigh NHS Foundation Trust	Wigan	Dr Neeraj Prasad	Consultant Gastroenterologist
Hampshire Hospitals NHS Foundation Trust	Winchester	Dr John N Gordon	Consultant Gastroenterologist
Royal Wolverhampton Hospitals NHS Trust	Wolverhampton	Prof Matthew J Brookes	Consultant Gastroenterologist
Western Sussex Hospitals NHS Trust	Worthing	Dr Andy Li	Consultant Gastroenterologist
Yeovil District Hospital NHS Foundation Trust	Yeovil	Dr Stephen Gore	Consultant Gastroenterologist

Supplementary Table 2: Distribution of samples by individual participant and study visits

Distribution of samples by individual participant	
Number of samples	Number of participants
1	34
2	107
3	157
4	87
Distribution of samples by study visits	
Study visit (weeks since anti-TNF treatment commenced)	Number of samples
Week 0	373
Week 14	314
Week 30	251
Week 54	124

Supplementary Table 3: Gene ontology (GO) terms of differentially methylated probes associated with anti-TNF treatment

Pathway ID	ONTOLOGY	TERM	N	DE	P.DE	FDR
GO:0002376	Biological process	immune system process	2450	408	2.97E-13	6.79E-09
GO:0006955	Biological process	immune response	1646	267	1.28E-11	1.47E-07
GO:0002520	Biological process	immune system development	914	184	7.91E-09	5.82E-05
GO:0048534	Biological process	hematopoietic or lymphoid organ development	859	175	1.02E-08	5.82E-05
GO:0030097	Biological process	hemopoiesis	820	167	1.65E-08	7.52E-05
GO:0002682	Biological process	regulation of immune system process	1328	224	2.59E-08	9.87E-05
GO:0009607	Biological process	response to biotic stimulus	1368	207	5.80E-08	0.000189
GO:0002684	Biological process	positive regulation of immune system process	814	145	1.12E-07	0.000319
GO:0006952	Biological process	defense response	1579	228	1.43E-07	0.000363
GO:0050776	Biological process	regulation of immune response	804	141	1.83E-07	0.000419
GO:0002521	Biological process	leukocyte differentiation	536	112	2.80E-07	0.000581
GO:0043207	Biological process	response to external biotic stimulus	1329	196	3.92E-07	0.000688
GO:0051707	Biological process	response to other organism	1328	196	3.79E-07	0.000688
GO:0001816	Biological process	cytokine production	802	135	4.42E-07	0.000722
GO:0001817	Biological process	regulation of cytokine production	789	132	7.71E-07	0.001175
GO:0045321	Biological process	leukocyte activation	841	151	1.35E-06	0.001926
GO:0001819	Biological process	positive regulation of cytokine production	463	89	1.78E-06	0.002154
GO:0098542	Biological process	defense response to other organism	972	143	1.79E-06	0.002154
GO:1903131	Biological process	mononuclear cell differentiation	420	90	1.77E-06	0.002154
GO:0044419	Biological process	biological process involved in interspecies interaction between organisms	1480	218	2.01E-06	0.002297
GO:0030217	Biological process	T cell differentiation	256	62	2.46E-06	0.002677
GO:0043367	Biological process	CD4-positive, alpha-beta T cell differentiation	83	28	2.94E-06	0.003049
GO:0045087	Biological process	innate immune response	753	116	3.44E-06	0.003419

GO:0001775	Biological process	cell activation	978	172	3.89E-06	0.003704
GO:0030098	Biological process	lymphocyte differentiation	368	80	4.07E-06	0.003721
GO:0030155	Biological process	regulation of cell adhesion	743	155	4.45E-06	0.003906
GO:0070665	Biological process	positive regulation of leukocyte proliferation	150	37	5.82E-06	0.00492
GO:0005085	Biological process	guanyl-nucleotide exchange factor activity	223	68	6.19E-06	0.005053
GO:0042110	Biological process	T cell activation	478	94	7.67E-06	0.006044
GO:0007159	Biological process	leukocyte cell-cell adhesion	366	73	1.02E-05	0.007511
GO:0071674	Biological process	mononuclear cell migration	191	43	1.02E-05	0.007511
GO:0006909	Biological process	phagocytosis	232	58	1.12E-05	0.007805
GO:0070663	Biological process	regulation of leukocyte proliferation	242	51	1.13E-05	0.007805
GO:0046632	Biological process	alpha-beta T cell differentiation	112	34	1.20E-05	0.008083
GO:0046649	Biological process	lymphocyte activation	685	126	1.25E-05	0.008145
GO:0070661	Biological process	leukocyte proliferation	312	61	1.46E-05	0.009287
GO:1903706	Biological process	regulation of hemopoiesis	362	76	1.84E-05	0.011378
GO:0050900	Biological process	leukocyte migration	363	71	2.75E-05	0.016531
GO:0002252	Biological process	immune effector process	570	98	3.28E-05	0.017396
GO:0006954	Biological process	inflammatory response	793	123	3.35E-05	0.017396
GO:0032609	Biological process	interferon-gamma production	110	26	3.20E-05	0.017396
GO:0032649	Biological process	regulation of interferon-gamma production	110	26	3.20E-05	0.017396
GO:0035710	Biological process	CD4-positive, alpha-beta T cell activation	100	29	3.03E-05	0.017396
GO:0051246	Biological process	regulation of protein metabolic process	2536	395	3.35E-05	0.017396
GO:1903039	Biological process	positive regulation of leukocyte cell-cell adhesion	236	52	3.69E-05	0.018709
GO:0002764	Biological process	immune response-regulating signaling pathway	388	79	3.88E-05	0.019256
GO:0002694	Biological process	regulation of leukocyte activation	523	95	4.19E-05	0.020129
GO:0050670	Biological process	regulation of lymphocyte proliferation	222	46	4.30E-05	0.020129
GO:1903037	Biological process	regulation of leukocyte cell-cell adhesion	331	65	4.32E-05	0.020129

GO:0050671	Biological process	positive regulation of lymphocyte proliferation	137	32	4.41E-05	0.020136
GO:0042093	Biological process	T-helper cell differentiation	66	22	4.67E-05	0.020928
GO:0032944	Biological process	regulation of mononuclear cell proliferation	224	46	5.02E-05	0.021549
GO:0032946	Biological process	positive regulation of mononuclear cell proliferation	138	32	5.01E-05	0.021549
GO:0042102	Biological process	positive regulation of T cell proliferation	101	25	5.19E-05	0.021549
GO:0048583	Biological process	regulation of response to stimulus	3772	591	5.13E-05	0.021549
GO:0002253	Biological process	activation of immune response	296	61	5.41E-05	0.022065
GO:0002294	Biological process	CD4-positive, alpha-beta T cell differentiation involved in immune response	68	22	5.75E-05	0.022416
GO:0007166	Biological process	cell surface receptor signaling pathway	2606	434	5.61E-05	0.022416
GO:0022409	Biological process	positive regulation of cell-cell adhesion	281	61	5.79E-05	0.022416
GO:0051249	Biological process	regulation of lymphocyte activation	434	82	5.97E-05	0.022717
GO:1902105	Biological process	regulation of leukocyte differentiation	277	60	6.48E-05	0.024254
GO:0045785	Biological process	positive regulation of cell adhesion	433	93	6.60E-05	0.024332
GO:0002287	Biological process	alpha-beta T cell activation involved in immune response	69	22	6.87E-05	0.024504
GO:0002293	Biological process	alpha-beta T cell differentiation involved in immune response	69	22	6.87E-05	0.024504
GO:0050870	Biological process	positive regulation of T cell activation	213	47	7.10E-05	0.024584
GO:1901701	Biological process	cellular response to oxygen-containing compound	1195	209	7.10E-05	0.024584
GO:0050778	Biological process	positive regulation of immune response	495	86	7.41E-05	0.024875
GO:0050863	Biological process	regulation of T cell activation	324	64	7.37E-05	0.024875
GO:0071216	Biological process	cellular response to biotic stimulus	241	47	7.92E-05	0.026226
GO:0051345	Biological process	positive regulation of hydrolase activity	581	116	8.29E-05	0.02705
GO:0051251	Biological process	positive regulation of lymphocyte activation	284	59	8.47E-05	0.027243
GO:0030695	Biological process	GTPase regulator activity	475	115	9.28E-05	0.029052
GO:0060589	Biological process	nucleoside-triphosphatase regulator activity	475	115	9.28E-05	0.029052
GO:0045619	Biological process	regulation of lymphocyte differentiation	173	42	9.46E-05	0.029212
GO:0002366	Biological process	leukocyte activation involved in immune response	268	54	9.71E-05	0.029559

GO:0030099	Biological process	myeloid cell differentiation	378	80	9.96E-05	0.029932
GO:0019221	Biological process	cytokine-mediated signaling pathway	461	76	0.000118	0.033198
GO:0043547	Biological process	positive regulation of GTPase activity	247	64	0.000113	0.033198
GO:0046637	Biological process	regulation of alpha-beta T cell differentiation	68	22	0.000117	0.033198
GO:0046651	Biological process	lymphocyte proliferation	282	53	0.000117	0.033198
GO:0050790	Biological process	regulation of catalytic activity	2365	390	0.000116	0.033198
GO:0005096	Biological process	GTPase activator activity	449	110	0.000124	0.034543
GO:0030595	Biological process	leukocyte chemotaxis	226	45	0.000126	0.034611
GO:0030335	Biological process	positive regulation of cell migration	550	110	0.000131	0.03532
GO:0043370	Biological process	regulation of CD4-positive, alpha-beta T cell differentiation	51	17	0.00013	0.03532
GO:0002292	Biological process	T cell differentiation involved in immune response	75	22	0.000137	0.036472
GO:0032943	Biological process	mononuclear cell proliferation	285	53	0.000146	0.038322
GO:0002696	Biological process	positive regulation of leukocyte activation	329	64	0.000155	0.038876
GO:0006793	Biological process	phosphorus metabolic process	2705	440	0.000152	0.038876
GO:0043087	Biological process	regulation of GTPase activity	338	84	0.000151	0.038876
GO:0048584	Biological process	positive regulation of response to stimulus	2035	324	0.000153	0.038876
GO:0032268	Biological process	regulation of cellular protein metabolic process	2367	363	0.00016	0.039822
GO:0050865	Biological process	regulation of cell activation	567	100	0.000174	0.042177
GO:0071310	Biological process	cellular response to organic substance	2389	378	0.000174	0.042177
GO:0097529	Biological process	myeloid leukocyte migration	218	43	0.000178	0.042693
GO:1903749	Biological process	positive regulation of establishment of protein localization to mitochondrion	36	14	0.000181	0.043044
GO:0044093	Biological process	positive regulation of molecular function	1478	262	0.000184	0.043403
GO:0006796	Biological process	phosphate-containing compound metabolic process	2684	436	0.000187	0.043498
GO:1903747	Biological process	regulation of establishment of protein localization to mitochondrion	50	17	0.000189	0.043498
GO:0002263	Biological process	cell activation involved in immune response	272	54	0.000197	0.044588

GO:0002274	Biological process	myeloid leukocyte activation	220	45	0.000196	0.044588
GO:0050867	Biological process	positive regulation of cell activation	340	65	0.000204	0.045585
GO:0051336	Biological process	regulation of hydrolase activity	1023	178	0.000209	0.046295
GO:0010033	Biological process	response to organic substance	3041	458	0.000214	0.04693
GO:0007259	Biological process	receptor signaling pathway via JAK-STAT	166	34	0.000218	0.047393
GO:0072676	Biological process	lymphocyte migration	112	25	0.00022	0.047393
GO:0002250	Biological process	adaptive immune response	423	72	0.000223	0.047621
GO:0031663	Biological process	lipopolysaccharide-mediated signaling pathway	60	18	0.000234	0.049396

Abbreviations: N = number of genes in the GO term, DE = number of genes that are differentially methylated in the GO term, P.DE = P value for over representation of the GO term, FDR = false discovery rate from GO analysis

Supplementary Table 4: Differentially methylated probes over time following infliximab treatment compared to adalimumab treatment regardless of response

CpG	chr	pos	Relation to Island	Gene Name	Gene Group	Coefficient	P value
cg03446165	16	3107168	N_Shore	MMP25	Body	-0.0004	6.78E-10
cg12229367	17	55822335	OpenSea			-0.0003	1.54E-09
cg04790662	8	82005985	OpenSea	PAG1	5'UTR	-0.0005	2.82E-09
cg00508575	12	90050967	OpenSea	ATP2B1	TSS1500	-0.0004	4.91E-09
cg00561739	5	1807733	OpenSea	NDUFS6	Body	-0.0004	6.35E-09
cg07273698	2	46636809	OpenSea			-0.0003	1.10E-08
cg19351166	2	209133632	S_Shelf	PIKFYVE	5'UTR	-0.0004	1.49E-08
cg19729645	17	72007145	OpenSea			-0.0003	1.73E-08
cg20958086	1	160759689	OpenSea			-0.0004	1.76E-08
cg13508449	2	109843185	OpenSea	SH3RF3	Body	-0.0004	3.00E-08
cg23902264	1	241815413	OpenSea	WDR64	TSS200	-0.0005	4.21E-08
cg10230190	1	85405081	OpenSea	MCOLN2	Body	0.0004	5.49E-08
cg02451866	10	71251604	OpenSea	TSPAN15	Body	-0.0003	8.29E-08

Supplementary Table 5: Differentially methylated probes with shared associations to other common traits in the EWAS catalog

CpG	Gene	Trait
cg16395997	WDR8	C-reactive protein, Alcohol consumption per day, Body mass index
cg16736826	EDN2	Tobacco smoking, Serum low-density lipoprotein cholesterol, Smoking, Sex
cg19270739		Cleft palate vs cleft lip, Age
cg22448090	KIF21B	C-reactive protein
cg22787719		Primary Sjogrens syndrome
cg23172671		C-reactive protein, Body mass index, Total serum IgE, HIV infection, Rheumatoid arthritis, CCL8 protein levels (SeqId = 13748-4), INHBC protein levels (SeqId = 15686-49)
cg26227957	KIAA0090	C-reactive protein, Alcohol consumption per day, Follicle stimulating hormone, Chronic kidney disease, estimated glomerular filtration rate (eGFR), very early preterm birth (<28 weeks)
cg02068690	DTNB	Primary Sjogrens syndrome
cg02560388		Body mass index, Primary Sjogrens syndrome, Smoking, Age, Rheumatoid arthritis
cg02749511		HIV infection, Inflammatory bowel disease
cg13293266		Ageing
cg14210119		Ageing
cg15705813		Alcohol consumption per day
cg19351166	PIKFYVE	Serum high-density lipoprotein cholesterol
cg23371680		Rheumatoid arthritis, Android tissue mass, Android total mass
cg08996521	CISH	Age
cg09610644	BDH1	C-reactive protein, Sex, Chronic kidney disease, alcohol withdrawal recovery, estimated glomerular filtration rate (eGFR), very early preterm birth (<28 weeks)
cg10324158	CLEC3B	Primary Sjogrens syndrome, Sex
cg12992827		C-reactive protein, Alcohol consumption per day, Body mass index, Inflammatory bowel disease, Growth differentiation factor 15, Rheumatoid arthritis, C-Reactive Protein, All cause mortality
cg17572056	OSTalpha	C-reactive protein, HIV infection
cg18513344	MUC4	C-reactive protein, Body mass index
cg22505962	CLEC3B	Cleft palate vs cleft lip
cg26283496		Ageing
cg06151145	SLAIN2	High-density lipoprotein cholesterol, HIV infection, Ageing
cg01538969	DHX16	C-reactive protein, Alcohol consumption per day
cg03149958		Alcohol consumption per day, Age, Smoking, HIV infection
cg03546163	FKBP5	Alcohol consumption per day, Chronic kidney disease, Body mass index, Waist circumference, Body mass index change, All cause mortality, CBLN4 protein levels (SeqId = 5688-65)
cg03940776	SYNJ2	Body mass index, Primary Sjogrens syndrome, C-Reactive Protein, Age
cg15954235	SPDEF	Sex

cg17501210	RPS6KA2	C-reactive protein, Body mass index, Serum high-density lipoprotein cholesterol, Serum triglycerides, Inflammatory bowel disease, Sex, Ulcerative colitis, schizophrenia, All cause mortality, hepatic fat, PZP protein levels (SeqId = 6580-29)
cg25114611	FKBP5;LOC285847	Tobacco smoking, Lupus nephritis vs lupus without nephritis, Inflammatory bowel disease, Primary Sjogrens syndrome, Smoking, Sex, Rheumatoid arthritis, All cause mortality, Acute myocardial infarction
cg25325512	PIM1	C-reactive protein, Primary Sjogrens syndrome, Sex, All cause mortality
cg02729030	IMMP2L	Primary Sjogrens syndrome, Age
cg26804423	ICA1	C-reactive protein, Body mass index, Serum high-density lipoprotein cholesterol, Inflammatory bowel disease, HIV infection, Glycoprotein acetyls, schizophrenia, alcohol withdrawal recovery, CD300A protein levels (SeqId = 5630-48)
cg05279866		C-reactive protein, Sex
cg13821176	TRIB1	Serum high-density lipoprotein cholesterol
cg16292768	CLU	Primary Sjogrens syndrome, early preterm birth (<28 weeks)
cg02716826	SUGT1P1;AQP3	C-reactive protein, Body mass index, Inflammatory bowel disease, Chronic kidney disease, Waist Circumference
cg13661827		Primary Sjogrens syndrome
cg14012059	LRSAM1	HIV infection, Rheumatoid arthritis
cg14989316	LOC283050	Primary Sjogrens syndrome, Rheumatoid arthritis
cg19137806	INPP5A	Alcohol consumption per day
cg19588519		C-reactive protein, HIV infection, Sex, Inflammatory bowel disease
cg23761815	SLC29A3	C-reactive protein, Sex, schizophrenia
cg25580581		HIV infection, Primary Sjogrens syndrome, Ageing, Body mass index
cg01218206	SIK3	Smoking
cg10437839	PPP2R5B	Schizophrenia
cg12535090	V2	C-reactive protein, TEX29 protein levels (SeqId = 10557-6)
cg18518074	EHD1	Schizophrenia
cg00159243	SELPLG	C-reactive protein, Schizophrenia, Primary Sjogrens syndrome, CBLN4 protein levels (SeqId = 5688-65)
cg01871427		Primary Sjogrens syndrome
cg04255937	SETD1B	C-reactive protein, Smoking, Rheumatoid arthritis, schizophrenia
cg07986378	ETV6	Tobacco smoking, Smoking
cg12053291	SCARB1	C-reactive protein, HIV infection
cg13150925		Sex
cg14849578	SCARB1	C-reactive protein, HIV infection
cg02003183	CDC42BPB	C-reactive protein, Alcohol consumption per day, Educational attainment, Primary Sjogrens syndrome, Rheumatoid arthritis, Ageing, Inflammatory bowel disease, CBLN4 protein levels (SeqId = 5688-65)
cg13976502	C14orf43	Alcohol consumption per day, Tobacco smoking, Smoking, Diet Quality Alternative Healthy Eating Index 2010 (AHEI-2010)
cg19769147	PACS2	C-reactive protein, Alcohol consumption per day, Schizophrenia, Rheumatoid arthritis, Inflammatory bowel disease
cg22908922	PACS2	C-reactive protein, Alcohol consumption per day, Chronic kidney disease, EBAG9 protein levels (SeqId = 19323-1)
cg25132241	FBLN5	C-reactive protein, Inflammatory bowel disease
cg09018739	CPNE2	C-reactive protein, Alcohol consumption per day, Body mass index
cg09481056	ABCA3	C-reactive protein, Alcohol consumption per day, Rheumatoid arthritis
cg23669118	C16orf38	HIV infection

cg02976843	RAP1GAP2	C-reactive protein, Alcohol consumption per day, HIV infection
cg09929238	RPTOR	Alcohol consumption per day
cg15090877	P4HB	Sex, LDL cholesterol
cg17781958	BAHCC1	HIV infection
cg24129923	CHD3	Alcohol consumption per day
cg25616160		Body mass index
cg00711496	C19orf76;PRMT1	Smoking, Free cholesterol to total lipids ratio in large HDL, Glycoprotein acetyls
cg01799015	PALM	Alcohol consumption per day, Primary Sjogrens syndrome, Inflammatory bowel disease, Chronic kidney disease
cg10604476	ICAM5	Primary Sjogrens syndrome, Sex, Ageing, All cause mortality
cg17417856	PRMT1;C19orf76	Alcohol consumption per day, Tobacco smoking, Smoking, Educational attainment, Age
cg22910295	ICAM5	Primary Sjogrens syndrome, Sex
cg26470501	BCL3	C-reactive protein, Alcohol consumption per day, Body mass index, Smoking, Inflammatory bowel disease, Educational attainment, Primary Sjogrens syndrome, Rheumatoid arthritis, lung cancer, All cause mortality
cg08507178	PIM3	C-reactive protein, Arsenic exposure
cg09349128		Body mass index, Inflammatory bowel disease, Primary Sjogrens syndrome, Growth differentiation factor 15, PACAP protein levels (SeqId = 16322-10), orofacial cleft (cleft lip or cleft lip and palate)
cg17237086	MKL1	C-reactive protein, Alcohol consumption per day, HIV infection
cg24162801	C1orf21	Haemoglobin, EGLN1 protein levels (SeqId = 9901-28)
cg06291107	BLCAP	Arsenic exposure, Inflammatory bowel disease
cg13572071	TCEA3	Age
cg12670943	POLDIP3	Rheumatoid arthritis
cg00053916		Inflammatory bowel disease
cg07058694	ATXN2	Inflammatory bowel disease
cg08943045		Inflammatory bowel disease, FCRL1 protein levels (SeqId = 5728-60)
cg17325206		alcohol withdrawal recovery
cg27216853	CYS1	alcohol withdrawal recovery, CHRDL2 protein levels (SeqId = 6086-15)
cg23608915	MAP4K4	alcohol withdrawal recovery
cg09842038	CYS1	alcohol withdrawal recovery
cg07534027	SAG	alcohol withdrawal recovery
cg09310636	NRDE2	alcohol withdrawal recovery
cg09197509		alcohol withdrawal recovery
cg01211124	NUPL1	alcohol withdrawal recovery
cg12716582		alcohol withdrawal recovery
cg05673431	KSR1	alcohol withdrawal recovery, PACAP protein levels (SeqId = 16322-10)
cg21800396	ACSM6	malathion
cg27064284	MIR1273H	metolachlor
cg18871648	ELMSAN1	Waist Circumference, Body mass index
cg19748455	LOC100996291	Body mass index, PACAP protein levels (SeqId = 16322-10)
cg22698218	CNOT4	very early preterm birth (<28 weeks)
cg00519063	GCLM	very early preterm birth (<28 weeks), early preterm birth (<28 weeks)
cg24298539		very early preterm birth (<28 weeks)
cg21737354	TSPAN15	HNF4A protein levels (SeqId = 10041-3)
cg26081786		HNF4A protein levels (SeqId = 10041-3)

cg18931885		HNF4A protein levels (SeqId = 10041-3), R SE6 protein levels (SeqId = 5646-20), ARHGAP36 protein levels (SeqId = 6289-78), VAV3 protein levels (SeqId = 9830-109)
cg20292908		NTM protein levels (SeqId = 10907-116), OPCML protein levels (SeqId = 15622-13)
cg04609197	GHRH	COL11A2 protein levels (SeqId = 11278-4)
cg21489638	LINC-PINT	IL5RA protein levels (SeqId = 13686-2)
cg02907982	ADGRD1	FGF19 protein levels (SeqId = 13724-27)
cg11424260	A PC7	GLIPR2 protein levels (SeqId = 15522-2)
cg00840791		PACAP protein levels (SeqId = 16322-10)
cg18353028	CYP7B1	PACAP protein levels (SeqId = 16322-10)
cg15001240		PACAP protein levels (SeqId = 16322-10), GALNT2 protein levels (SeqId = 5764-4)
cg11902329		PACAP protein levels (SeqId = 16322-10)
cg03262246	CDKN2AIPNL	MLN protein levels (SeqId = 5631-83)
cg12174507	RCSD1	TMX3 protein levels (SeqId = 5654-70), EPO protein levels (SeqId = 5813-58)
cg01467435	GTDC1	FCRL1 protein levels (SeqId = 5728-60)
cg03172765	PSMD1	FTH1 protein levels (SeqId = 5934-1)
cg22417925	TOP1MT	FTH1 protein levels (SeqId = 5934-1)
cg21452109		WSCD2 protein levels (SeqId = 6274-15)
cg03698766		RPN1 protein levels (SeqId = 6458-6)
cg00156232	VKORC1L1	ENPP5 protein levels (SeqId = 6556-5)
cg10967866	INPP5A	FAIM3 protein levels (SeqId = 6574-11)
cg04940901	D H1	VAV3 protein levels (SeqId = 9830-109)

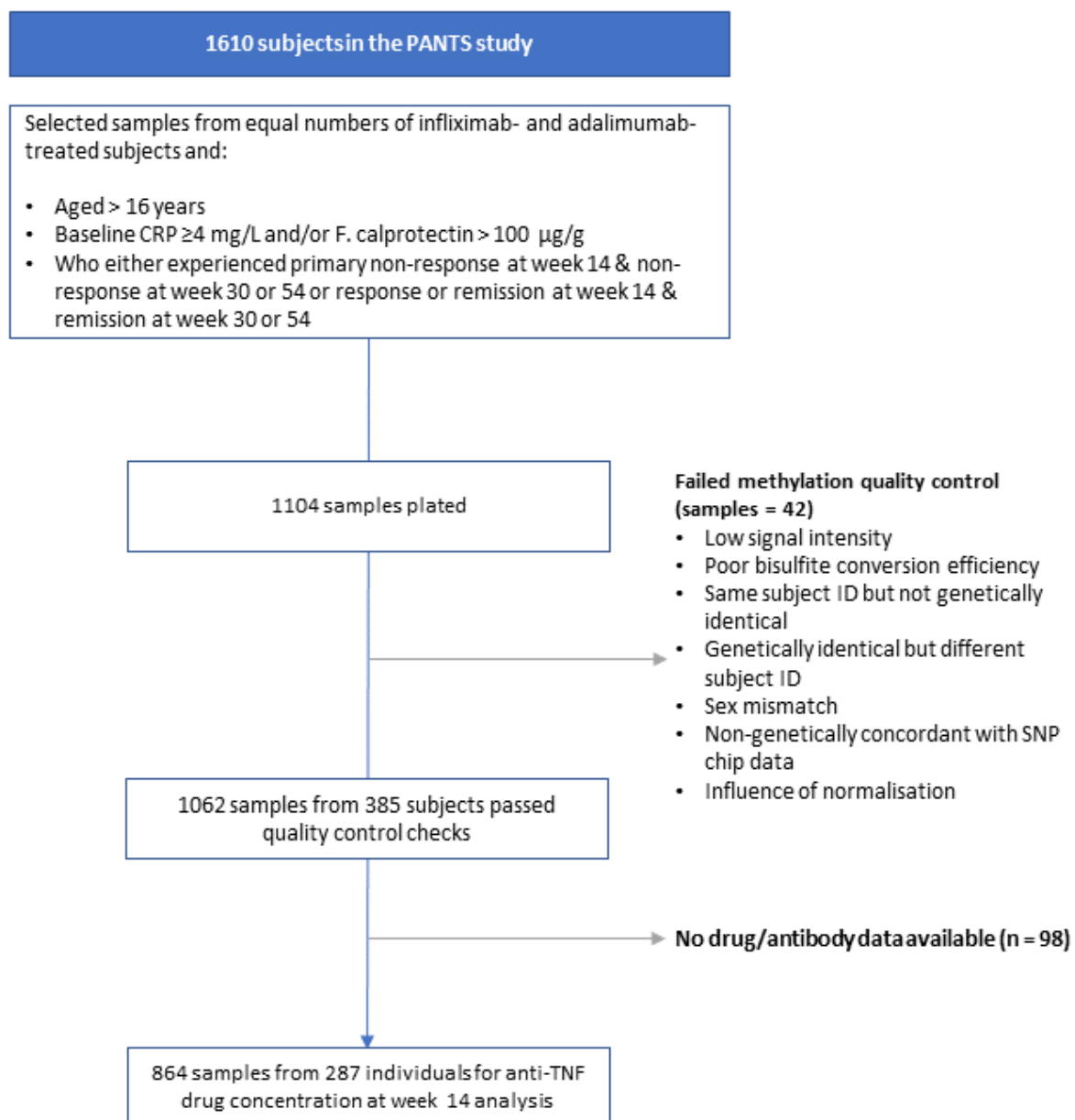
Supplementary Table 6: Differentially methylated probes at baseline associated with both drug concentration at week 14 and primary non-response

CpG	chr	pos	Relation to Island	Gene Name	Gene Group	Drug level Coefficient	Drug level p value	PNR Coefficient	PNR P value
cg27216853	2	10205672	OpenSea	CYS1	Body	-0.0371	8.79E-12	0.0245	2.38E-10
cg23606775	1	9790616	Island	CLSTN1	Body	-0.0220	1.44E-11	0.0133	2.62E-08
cg18138532	10	12078337	OpenSea	UPF2	5'UTR	-0.0273	1.92E-11	0.0157	8.51E-08
cg09842038	2	10205716	OpenSea	CYS1	Body	-0.0361	5.95E-11	0.0245	1.26E-09
cg16217672	10	75843201	OpenSea	VCL	Body	-0.0264	1.76E-10	0.0167	8.61E-08
cg01499619	5	179205250	OpenSea			-0.0249	3.73E-10	0.0170	2.27E-09
cg10705487	5	179108352	S_Shore	CBY3	TSS1500	-0.0217	3.73E-10	0.0139	4.72E-08
cg22090525	10	12078334	OpenSea	UPF2	5'UTR	-0.0254	4.48E-10	0.0177	1.33E-09
cg10100117	1	179843111	N_Shelf	TOR1AIP2	5'UTR	-0.0269	5.82E-10	0.0183	8.79E-09
cg16395997	1	3562798	S_Shore	WDR8	Body	-0.0369	7.87E-10	0.0241	2.02E-08
cg23608915	2	102333795	OpenSea	MAP4K4	Body	-0.0312	9.42E-10	0.0215	6.26E-09
cg09439276	16	66554515	OpenSea	TK2	Body	-0.0222	2.41E-09	0.0156	6.38E-09
cg23669118	16	1538347	S_Shore	C16orf38	1stExon	-0.0379	2.63E-09	0.0245	4.54E-08
cg03070999	12	6745630	OpenSea	LPAR5	TSS1500	-0.0218	5.56E-09	0.0151	4.91E-08
cg04326337	20	36664969	S_Shelf	RPRD1B	Body	-0.0354	5.69E-09	0.0250	4.44E-08
cg03546163	6	35654363	N_Shore	FKBP5	5'UTR	0.0669	1.57E-08	-0.0488	1.50E-08
cg02897385	5	142528481	OpenSea	ARHGAP26	Body	0.0337	2.57E-08	-0.0258	4.46E-08
cg18931885	10	112100739	OpenSea			-0.0257	3.09E-08	0.0190	1.11E-08
cg03262246	5	133749006	S_Shore	CDKN2AIPNL	TSS1500	-0.0189	5.23E-08	0.0135	3.86E-08
cg13661827	9	111885602	S_Shelf			0.0240	8.53E-08	-0.0173	8.60E-08

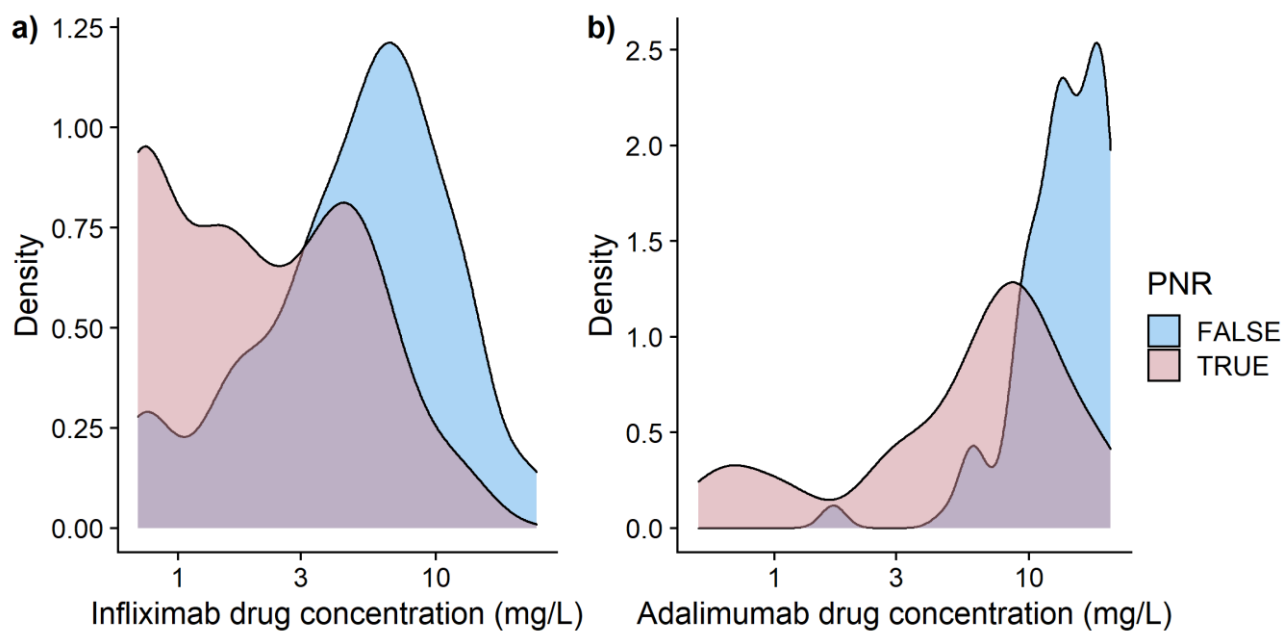
Supplementary Table 7: Differentially methylated probes associated with anti-TNF primary non-response over time

CpG	chr	pos	Relation to Island	Gene name	Gene group	Coefficient	P value
cg07839457	16	57023022	N_Shore	NLRC5	TSS1500	-0.0007	1.93E-13
cg11047325	17	76354934	Island	SOCS3	Body	-0.0007	3.70E-11
cg15022400	15	45028161	OpenSea	TRIM69	TSS1500	-0.0003	3.33E-09
cg25867318	17	40494745	OpenSea	STAT3	Body	-0.0004	6.06E-08
cg08950751	11	67255492	OpenSea	AIP	Body	-0.0003	6.82E-08

Supplementary Figure 1: Sample flow through the study

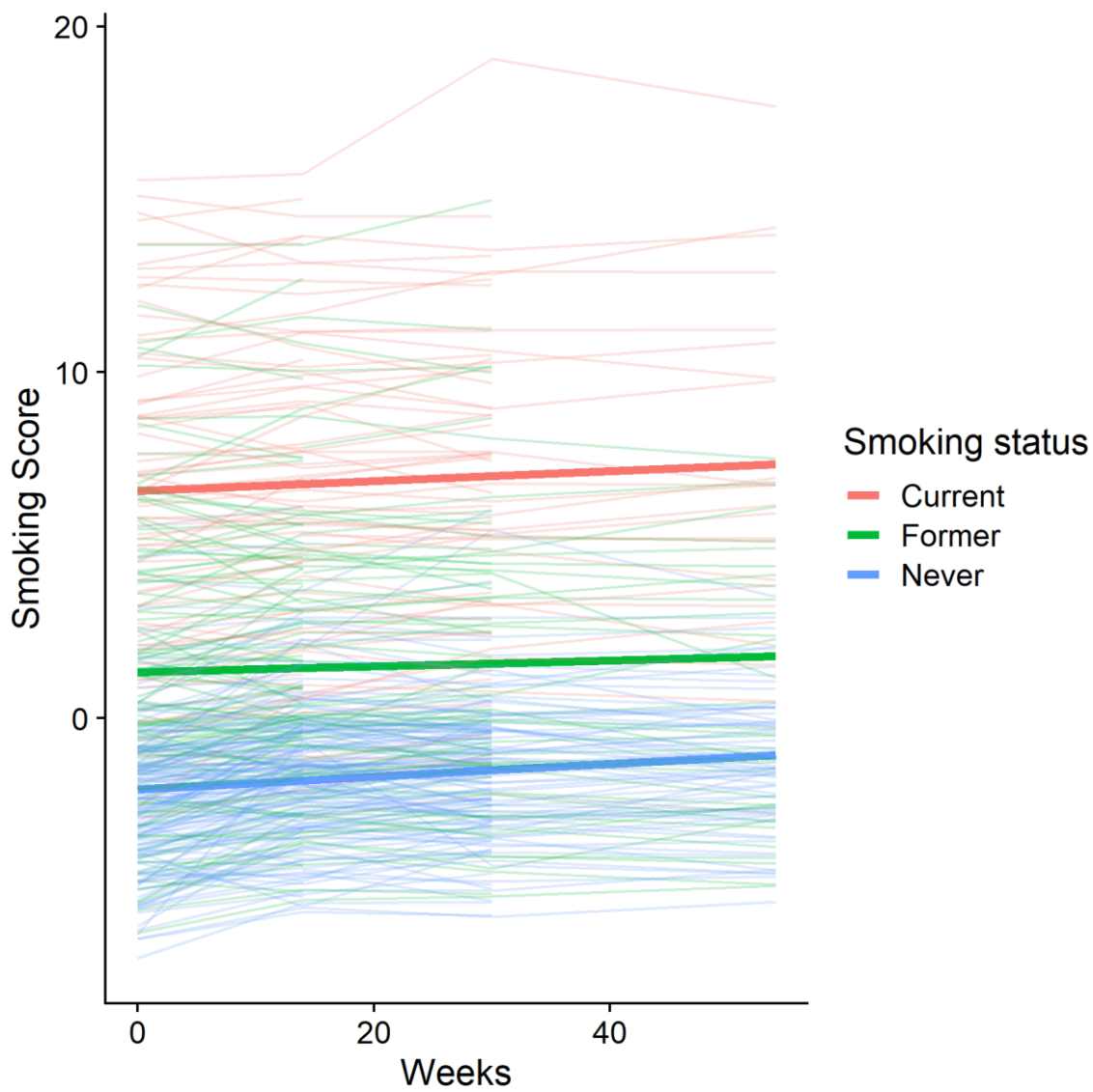


Supplementary Figure 2: Density plot of anti-TNF drug concentration at week 14 stratified by primary non-response



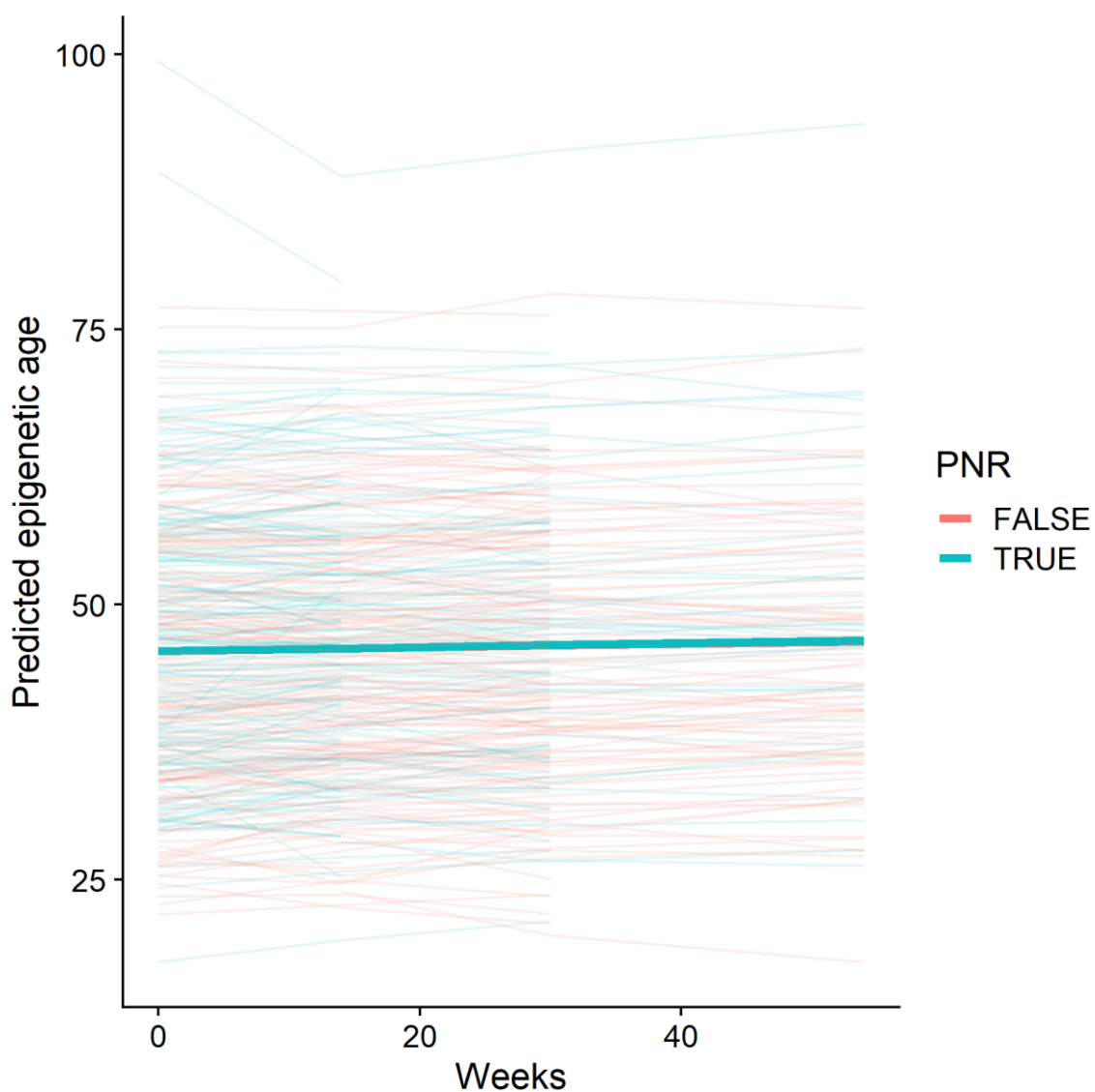
a) Infliximab drug concentration at week 14 stratified by primary non-response status b) adalimumab drug concentration at week 14 stratified by primary non-response status. Abbreviations: PNR = primary non-response

Supplementary Figure 3: Change in DNA methylation smoking score over 54 weeks



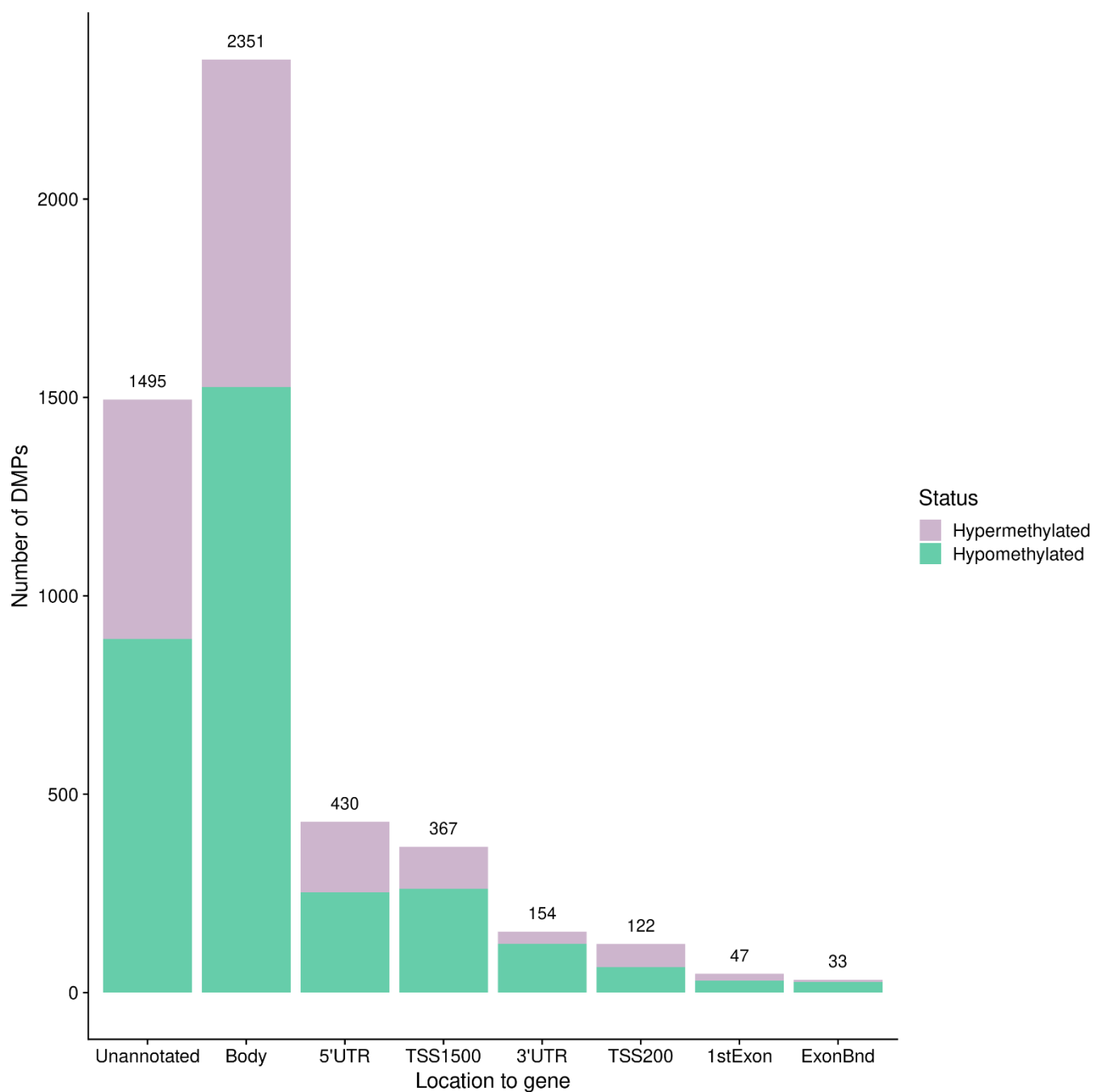
Predicted smoking scores in solid lines and un-corrected smoking scores in faded lines. Red represents smoking score of current smokers, green of former smokers and blue of never smokers.

Supplementary Figure 4: Change in epigenetic age over 54 weeks



Predicted epigenetic age in solid lines and un-adjusted epigenetic age in faded lines. Turquoise represents those who experienced primary non-response and orange those who did not. PNR = primary non-response.

Supplementary Figure 5: Genomic location of differentially methylated probes associated with anti-TNF treatment over time



Genomic locations as provided by Illumina. Green represents hypomethylated DMPs, purple represents hypermethylated DMPs. Abbreviations: DMPs = differentially methylated positions, UTR = untranslated region, TSS = transcription start site, ExonBnd = exon boundary.

Supplementary Figure 6: Bar chart of the top 20 Gene Ontology terms of differentially methylated probes associated with anti-TNF treatment

