

1           **Surgical and percutaneous coronary revascularization in patients with**  
2           **multivessel or left main disease; what happens beyond five years? A**  
3           **systematic review and study level meta-analysis of randomized trials.**

4  
5    *Francesco Formica*<sup>a</sup>, MD, *Daniel Hernandez-Vaquero*<sup>b</sup>, MD, *Domenico Tuttolomondo*<sup>c</sup>, MD,  
6    *Alan Galligani*<sup>d</sup>, MD, *Gurmeet Singh*<sup>e</sup>, MD, *Claudia Pattuzzi*<sup>a,d</sup>, MD, *Giampaolo Niccoli*<sup>a,d</sup>,  
7    MD, *Roberto Lorusso*<sup>f,g</sup>, MD, PhD and *Francesco Nicolini*<sup>a,d</sup>, MD, PhD.

8  
9    <sup>a</sup>University of Parma, Department of Medicine and Surgery, Parma, Italy.

10   <sup>b</sup>Cardiac Surgery Department, Hospital Universitario Central de Asturias, Oviedo, Spain.

11   <sup>c</sup>Cardiology Unit, University Hospital of Parma, Parma, Italy.

12   <sup>d</sup>Cardiac Surgery Unit, University Hospital of Parma, Parma, Italy.

13   <sup>e</sup>Department of Critical Care Medicine and Division of Cardiac Surgery, Mazankowski Alberta  
14   Heart Institute, University of Alberta, Edmonton, Canada.

15   <sup>f</sup>Cardio-Thoracic Department, Maastricht University Medical Centre, Heart and Vascular Centre,  
16   Maastricht, The Netherlands.

17   <sup>g</sup>Cardiovascular Research Institute Maastricht (CARIM), Maastricht, The Netherlands.

18  
19    **Corresponding author:**

20  
21    Prof. Francesco Formica, MD

22    *UOC Cardiochirurgia*

23    *Azienda Ospedaliera Universitaria di Parma*

24    *Via A. Gramsci, 14*

25    *43126 Parma, Italy*

26    *Tel.: +39 0521703278*

27    *E-mail: francescoformica.hs@gmail.com*

28            [francesco.formica@unipr.it](mailto:francesco.formica@unipr.it)

29  
30    **Conflict of interest:** None declared

31  
32    **Funding:** No funds were provided to perform this meta-analysis.

33            NOTE: This preprint reports new research that has not been certified by peer review and should not be used to guide clinical practice.

35 **Abbreviations:**

36 CABG = coronary artery bypass grafting.

37 PCI = percutaneous coronary intervention

38 DES = drug-eluting stent

39 CAD = coronary artery disease

40 LMD = left main disease

41 MVD = multivessel disease

42 RCT = randomized controlled trial

43 OR = odd ratio

44 HR = hazard ratio

45 CI = confidence interval

46 RMST = restricted mean survival time

47

48

49

50

51

52

53

54

55

56

57

58

59

60

61

62 **Abstract**

63 Meta-analysis exploring outcomes beyond 5-years of trials comparing coronary artery bypass graft  
64 (CABG) with percutaneous coronary intervention (PCI) utilizing drug-eluting stents in patients  
65 with coronary artery disease (CAD), are missing. We conducted a meta-analysis to compare very  
66 long-term outcomes, between the two interventions.

67 Using electronic databases, we retrieved 4 trials, between January, 2010 and January, 2023. The  
68 primary endpoint was all-cause mortality. Kaplan-Meier curves of endpoint was reconstructed.  
69 Comparisons were made by Cox-linear regression frailty model and by landmark analysis. A  
70 flexible parametric model for survival analysis was used to obtain the time-dependent hazard-ratio.  
71 A random-effect method was applied.

72 5180 patients were included and randomized to CABG (n=2586) or PCI with DES (n=2594).  
73 During 10-year follow-up, PCI showed an overall higher incidence of all-cause mortality [hazard  
74 ratio (HR) 1.19; 95% confidence interval (CI), 1.104-1.32; p=0.008]. At landmark analysis, PCI  
75 showed higher risk of the endpoint within 5-years (HR 1.2; 95% CI, 1.06-1.53; p=0.008) while no  
76 difference was found at 5–10-year period (HR,1.03; 95%CI, 0.84-1.26; p=0.76). The time-varying  
77 HR analysis of PCI versus CABG was consistent with the results of the landmark analysis. There  
78 was no long-term difference between the two interventions for myocardial infarction (MI)  
79 (OR,1.42; 95%CI, 0.92-2.18; p=0.11), composite of all-cause mortality, stroke or MI (OR,1.07;  
80 95%CI, 0.84-1.36; p=0.57), stroke (OR,0.97; 95%CI, 0.59-1.59; p=0.91) and cardiovascular death  
81 (OR,1.02; 95%CI, 0.75-1.40; p=0.90), while PCI was associated with an increased risk for repeat  
82 revascularization (OR,2.11; 95%CI, 1.58-2.81; p<0.001) and major adverse cardiac and  
83 cerebrovascular events (OR,1.41; 95%CI, 1.13-1.75; p<0.0001). In conclusion, in patients with  
84 CAD, there was a significantly overall higher incidence of all-cause mortality after PCI compared  
85 to CABG beyond 5-year follow-up. Specifically, CABG is still favorable beyond 5 years and  
86 maintains its gold standard role for the CAD treatment; PCI has an evident higher mortality during  
87 the first 5 years and a comparable outcome beyond 5 years.

88

89 **Key words:** coronary artery bypass grafting; percutaneous coronary intervention; drug-eluting  
90 stent; survival; meta-analysis; Long-term follow-up; extended follow-up; randomized trials.

91 .

92

93

94

95

96 **Introduction**

97 The 2018 European and 2021 American Guidelines recommended percutaneous coronary  
98 intervention (PCI) as an appropriate coronary revascularization strategy as alternative to coronary  
99 artery bypass grafting (CABG) in patients with left main disease (LMD) and multivessel disease  
100 (MVD), as well as with low-intermediate coronary complexity (1,2). These recommendations are  
101 based on 5-year follow-up results of randomized clinical trials (RCTs) comparing PCI with drug-  
102 eluting stents (DES) and CABG, published during the last 10 years. However, life expectancy for  
103 a 80-year person of the general population in Europe and USA is around 9 years (3,4). Therefore,  
104 5 years results are clearly not enough to decide the best strategy for the vast majority of patients.  
105 Recent meta-analyses of RCTs comparing PCI with DES and CABG in patient with LMD and or  
106 MVD, have reported conflicting results between the two interventions in terms of 5-year overall  
107 survival, stroke, myocardial infarction (MI) and repeat revascularization, although most of pooled  
108 results showed an advantage in favour of CABG over PCI (5-7). However, the choice of the  
109 optimal mode of revascularization remains controversial especially for many patients that have a  
110 life expectancy of more than 10 years.

111 End-points of many RCTs are limited at 5 years of follow-up. But survival curves of these RCTs  
112 frequently provide longer information. This information is not usually useful in individual studies  
113 due to low statistical power after 5 years because of deaths and censored events. However, this  
114 low statistical power could be overcome by pooled analysis, which is one of the aims of the meta-  
115 analysis (8).

116 Therefore, given the importance of the optimal revascularization strategy is still under debate, and  
117 considering that there are no meta-analyses of RCTs exploring the results of PCI with DES and  
118 CABG beyond 5 years, we conducted a comprehensive systematic review and meta-analysis with  
119 the aim of comparing very long-term outcomes, beyond 5-years, between the two interventions.

120

121



122 **Methods**

123 As the aggregated data were extracted from the published articles included in the analysis, this  
124 meta-analysis is exempted from Ethical Committee (EC) evaluation as the investigators of each  
125 trial obtained the approval from the local Ethical Committees (EC). The meta-analysis adhered to  
126 the Preferred Reporting Items for Systematic Reviews and Meta-Analyses (PRISMA) guidelines  
127 (9) and the study protocol was registered and published online in PROSPERO (The International  
128 Prospective Register of Systematic Reviews; ID: CRD42023401293).

129

130 **Search strategy**

131 The search strategy consisted of a comprehensive review of relevant studies published between  
132 January 1, 2010 and January 31, 2023 in three electronic databases, PubMed, Cochrane Central  
133 Register of Controlled Trials (CENTRAL) and EMBASE. The references list of previous meta-  
134 analyses and relevant articles were also used to complete the search.

135 Using Boolean operators (“AND” or “OR”), the search strings included (‘multivessel coronary  
136 artery disease’) AND (‘left main disease’ OR ‘left main coronary artery disease’) AND (‘coronary  
137 artery bypass’ OR ‘CABG’) AND (‘percutaneous coronary intervention’ OR ‘PCI’) AND (‘drug-  
138 eluting stents’ OR ‘DES’ OR stenting) AND (‘randomized’ OR ‘randomised’ OR ‘trials’) AND  
139 (‘long-term follow-up’ OR ‘extended follow-up’). A medical librarian refined the literature search.  
140 The search algorithm is reported in Supplementary Material (Table S1).

141

142 **Inclusion criteria**

143 Study eligibility criteria followed the PICOS format (Population; Intervention; Comparison;  
144 Outcomes; Studies). Population: patients with CAD affected by LMD and or MVD and deemed  
145 eligible for either CABG or PCI; Intervention: PCI; Comparison: CABG operation; Outcomes:  
146 overall survival and incidence of stroke, MI and repeat revascularization at longest follow-up;  
147 Studies: only RCTs written in English languages that reported graphed Kaplan–Meier (KM)

148 curves of very long-term survival (beyond 5-year follow-up) of the outcomes of interest. Two  
149 authors (DT, CP) independently scanned and reviewed titles and abstracts and disagreement was  
150 resolved by a senior author (FF).

151

### 152 ***Data extraction and collection***

153 Two authors (AG, DT) independently extracted data from main text and supplementary materials  
154 of the RCTs included in the analysis. Data were then collected in a standard table sheet database  
155 (Microsoft Office Excel 2016, Microsoft, Redmond, WA, USA). The included trials were listed  
156 by first author, study period and year of publication, preoperative characteristics and postoperative  
157 outcomes. Disagreement was solved by a senior author (FF).

158

### 159 ***Risk of bias assessment***

160 Two authors (NF, FF) assessed the quality of the studies and the risk of bias using the Cochrane  
161 Collaboration revised tool for randomized control trials (RoB 2) (9) (Supplementary Table S2).

162

### 163 **Endpoints**

164 The primary endpoint was the incidence of all-cause mortality. The secondary endpoints were  
165 repeat coronary revascularization, myocardial infarction (MI), incidence of cardiovascular (CV)  
166 death, stroke, composite outcomes (all-cause mortality, stroke and MI) and the incidence of major  
167 adverse cardiac and cerebrovascular events (MACCE) including all-cause mortality, stroke, MI  
168 and repeat coronary revascularization.

169

### 170 **Statistical analysis**

171 ***Data pooling and meta-analysis.***

172 Continuous variables were reported as mean  $\pm$  standard deviation (SD). Variables expressed in  
173 median and interquartile ranges were converted into mean and SD using a validated formula (11).  
174 Categorical variables were reported as number and percentages.  
175 Primary endpoint was analyzed with two-stage approach to conduct the individual patient data  
176 (IPD) reconstruction meta-analysis (12). Secondary outcomes were compared using odd ratio  
177 (OR) and 95% confidence interval (CI) and effect estimates were calculated according to the  
178 random-effect model and the DerSimonian-Laird method and were represented with the forest  
179 plot. An OR  $> 1$  indicated an advantage of CABG arm over PCI. Heterogeneity was evaluated  
180 with chi-squared and  $I^2$  tests and defined as absent or low for  $I^2$  ranging from 0% to 25%, moderate  
181 for  $I^2$  ranging from 26% to 50% and high for  $I^2$  above 50% (13).

182

### 183 ***Individual patient data reconstruction.***

184 To assess the entire follow-up duration of each trial we performed an IPD analysis applying an  
185 iterative approach to reconstruct the original database of each trial using the method described by  
186 Wei, Royston et al. (14,15). We employed a dedicated software (GetData Graph Digitizer version  
187 2.5.3; <http://getdata-graph-digitizer.com>) to digitize the K-M curves by importing the time  
188 (abscissa-x) and survival probability (ordinate-y) values from the original K-M curves. The  
189 databases were reconstructed by combining the extracted value of time and survival with the  
190 patients at risk for the time points indicated in the original K-M curve. Quality assessment of the  
191 databases were performed by visually comparing the K-M curves and the estimated patients at risk  
192 from the reconstructed databases with the original ones. Then, we merged data of reconstructed  
193 databases in a single database to recalculate the aggregated survival curves and the life tables. By  
194 doing this, we simulated a patient-level meta-analysis (16).

195

196

197

198 ***First stage of two-stage approach meta-analysis.***

199 Cox proportional hazards models with inclusion of frailty term to account for heterogeneity  
200 amongst trials was used to compare the two arms and the hazard ratio (HR) with 95% CIs were  
201 calculated and reported. The proportional of hazard assumption (PHA) was assessed for the  
202 primary endpoint and was tested by visual inspection of K-M curves, log-minus-log plots,  
203 predicted versus observed survival curves and the scaled Schoenfeld residuals. A  $p < 0.05$  indicated  
204 a violation of proportionality.

205 Given the potential different long-term (0-5 years) and very long-term risks (5-10 years) of the  
206 two revascularization approaches, landmark analysis with a 5-years cut-off was planned in the  
207 statistical analysis and performed.

208 Further, a flexible parametric model for survival analysis was used to obtain the time-dependent  
209 HRs (Royston-Parmar models) using a restricted cubic spline function. The baseline cumulative  
210 hazard was modeled using spline with 5 degrees of freedom (df; 4 intermediate knots and two  
211 knots at each boundary); the time-varying effect of intervention was modelled using a restricted  
212 cubic spline with 3 df (2 internal knots).

213

214 ***Second stage of two-stage meta-analysis***

215 In the second stage we assessed the treatment effect estimate at longest available follow-up as OR  
216 with its 95% CI. An  $OR > 1$  indicated an advantage of CABG arm. Effect measure was calculated  
217 according to the random-effect model and the DerSimonian-Laird method and was represented  
218 with the forest plot. Heterogeneity was evaluated with chi-squared and  $I^2$  tests and defined as early  
219 described (13).

220

221 ***Sensitivity analysis***

222 As a sensitivity analysis, we compared the pooled HRs and 95% CIs of both one-stage and two-  
223 stage analysis and then, to increase the accuracy of our results, we performed an extra sensitivity

224 analysis according to the leave-one-out method (17) to identify the influence of a single study on  
225 the primary outcome, if heterogeneity was significant.

226

### 227 *Restricted mean survival time*

228 We used the restricted mean survival time (RMST) method to compare the mean survival time  
229 between CABG and PCI at a specified truncation time ( $t^*$ ). The RMST represents a measure of  
230 life expectancy between the time of intervention and the  $t^*$  and was calculated as the area under  
231 the survival curve for each arm. We selected  $t^* = 5$ -years,  $t^* = 8$ -years and  $t^* = 10$ -years for the  
232 following reasons: first, all trials have follow-up longer than 5 years; second, recent meta-analyses  
233 reported survival results at 5-years follow-up; third, the 8-years was the longest follow-up shared  
234 by the four trials; last, 10 years was the longest follow-up available. We calculated the difference  
235 of RMST between CABG and PCI ( $rmstD = rmstCABG - rmstPCI$ ), which is interpretable as the  
236 number of life-years gained with PCI compared to CABG (18,19).

237 All the statistical analyses were computed with Stata/SE version 16.1 (Stata Corp, College Station,  
238 Tex). A two-tailed p-value  $<0.05$  indicated statistical significance.

239

## 240 **Results**

241 The literature search identified 475 records and 13 studies were considered relevant and then  
242 retrieved. Among them, 4 RCTs [BEST (NCT05125367 and NCT00997828) FREEDOM  
243 (NCT00086450), PRECOMBAT (NCT03871127 and NCT00422968) and SYNTAX  
244 (NCT03417050) (20-23)] met the eligibility criteria and were included in the final analysis. The  
245 PRISMA Flow Chart of study selection is shown in Supplemental Figure 1. The trials included  
246 5180 patients, including 2586 patients randomized to CABG and 2594 patients to PCI with DES.  
247 All trials presented follow-up beyond 5-years with a mean weighted follow-up duration of 10.23  
248 years. Specifically, BEST, PRECOMBAT and SYNTAX trials have reported 10-year follow-up  
249 for all-cause mortality, while FREEDOM trial has reported 8-year follow-up. In addition,

250 FREEDOM trial reported separately survival analysis of whole cohort (n=1900) and of extended  
251 cohort (n=943). Baseline variables of patients enrolled in each trial are reported in Table 1.  
252 Baseline characteristics of single trials are showed in Table 2. The endpoint definition of single  
253 trials is presented in supplementary material (Table S3).

254

## 255 **Primary endpoints**

### 256 *All-cause mortality*

257 The Cox linear regression frailty model revealed that PCI was associated with a higher rate of all-  
258 cause mortality compared to CABG (HR 1.19; 95% CI, 1.04-1.32;  $p = 0.008$ , frailty theta 0.08)  
259 (Fig. 1A). The PHA was not violated ( $p=0.4$ ). Additional log-minus-log survival curves, predicted-  
260 versus-observed survival functions and the scaled Schoenfeld residuals plot are provided in the  
261 supplemental materials (Fig S2 to S4). The landmark analysis showed a greater risk of adverse  
262 event for PCI compared to CABG at 0–5-year period (HR 1.2; 95% CI, 1.06-1.53;  $p = 0.008$ ),  
263 while no difference was found at 5–10-year period (HR 1.03; 95% CI, 0.84-1.26;  $p = 0.76$ ) (Fig.  
264 1B). We observed a statistically significant 5-year RMST difference of 0.07 years (25 days) (95%  
265 CI, 0.01-0.125;  $p=0.02$ ) gained with CABG. After 8 years of follow-up, the RMST difference was  
266 statistically significant at 0.14 years (1.7 months) (95% CI, 0.03-0.25;  $p=0.009$ ) gained with  
267 CABG. The 10-year RMST difference was statistically significant at 0.20 years (95% CI, 0.05-  
268 0.35;  $p=0.007$ ), suggesting a prolonged life expectancy by 0.20 years (2.4 months) in patients with  
269 CABG, compared to patients with PCI (Fig. 1A and supplementary Table S4).

270 The time-varying HR analysis of PCI versus CABG was consistent with the results of the landmark  
271 analysis (Fig. 1C). PCI and CABG showed comparable results in the first year after surgery.  
272 Thereafter, the benefit of CABG became clearly superior to PCI until about 6 years. Beyond 6-  
273 years the benefit of CABG was lost and the two interventions were comparable. In the cumulative  
274 two-stage meta-analysis, the point estimate for all-cause mortality at the longest follow-up showed

275 a higher risk of death for PCI compared with CABG (OR 1.24, 95% CI, 1.06–1.45;  $p = 0.01$ ) with  
276 low heterogeneity ( $I^2=14.37\%$ ) (Fig. 2).

277 We performed both first-stage and second-stage analysis of two-stage approach analysis including  
278 data of extended follow-up FREEDOM trial. Results of the Cox regression linear frailty model  
279 (HR 1.16; 95% CI, 1.01-1.32;  $p = 0.03$ , frailty theta 0.08) and the cumulative meta-analysis (OR  
280 1.23; 95% CI, 1.06-1.42;  $p = 0.01$ ) were consistent with the main analysis.

281

## 282 **Secondary endpoints**

### 283 ***Myocardial infarction***

284 Data on MI beyond 5-year follow-up were reported in BEST, FREEDOM and PRECOMBAT  
285 trials. In the FREEDOM trial, data on MI were recorded in 415 patients. The overall effect for MI  
286 showed that PCI and CABG were comparable (OR 1.42; 95% CI, 0.92-2.18;  $p=0.11$ ) with no  
287 statistical heterogeneity ( $I^2=0\%$ ) (Fig. 3A).

288

### 289 ***Repeat coronary revascularization***

290 BEST and PRECOMBAT trials reported data for repeat coronary revascularization. The overall  
291 effect measure analysis showed that PCI was associated with a higher risk of repeat coronary  
292 revascularization (OR 2.11; 95% CI, 1.58-2.81;  $p<0.001$ ) with no statistical heterogeneity ( $I^2=0\%$ )  
293 (Fig. 3B). Both trials reported the K-M curves. The time-to-event reconstructed curves with Cox  
294 linear regression are presented in supplementary material (Fig. S5).

295

### 296 ***Composite of all-cause mortality, stroke or MI***

297 BEST and PRECOMBAT trials reported data for composite of all-cause mortality, stroke or MI.  
298 The overall effect measure analysis showed that PCI and CABG were comparable at longest  
299 follow-up (OR 1.07; 95% CI, 0.84-1.36;  $p=0.57$ ) with no evidence of heterogeneity ( $I^2=0\%$ ) (Fig.

300 3C). Both trials reported K-M curves for this composite outcome. The time-to-event reconstructed  
301 curves with Cox linear regression are presented in supplementary material (Fig. S6).

302  
303 ***Stroke***  
304 Data on stroke beyond 5-year follow-up were reported in BEST, FREEDOM and PRECOMBAT  
305 trials. In the FREEDOM trial, data were recorded in 415 patients. The rate of stroke was  
306 comparable between the two interventions (OR 0.97; 95% CI, 0.59-1.59; p=0.91) without  
307 heterogeneity ( $I^2=0\%$ ) (Fig. 3D).

308  
309 ***Cardiovascular death***  
310 BEST and PRECOMBAT trials reported data for CV death. The overall effect measure analysis  
311 showed that PCI and CABG were comparable (OR 1.02; 95% CI, 0.75-1.40; p=0.90) with no  
312 heterogeneity ( $I^2=0\%$ ) (Fig. 3E).

313  
314 ***MACCE***  
315 BEST and PRECOMBAT trials reported data for MACCE. The PCI was associated with a higher  
316 rate of MACCE compared to CABG at available longest follow-up (OR 1.41; 95% CI, 1.13-1.75;  
317 p<0.0001) with no evidence of heterogeneity ( $I^2=0\%$ ) (Fig. 3F).

318  
319 **Discussion**  
320 The principal finding of this IPD study-level meta-analysis of RCTs is that, at a longest available  
321 10-year follow-up, there was a significant greater risk of overall mortality after PCI. We estimated  
322 a 13.3% vs. 10.2% incidence of death after the first 5-years of PCI and CABG, respectively, and  
323 at 10-years the incidence of death was still higher in PCI (23.7% and 20.5%, respectively).  
324 However, this benefit was evident in the first 6-year follow-up; after this time, risk of death was  
325 similar between both interventions. We found that, at 10-year follow-up, patients undergoing



326 surgery live longer and therefore CABG is the gold standard approach. However, this  
327 recommendation may not be as robust for younger patients or those with a longer life expectancy,  
328 because the benefit of CABG seems to be lost after 6 years of follow-up. At this point, survival  
329 curves stop diverging and become parallel. Therefore, for many patients, the decision between  
330 CABG or PCI should not be based on life expectancy, but on frailty or other considerations.  
331 Overall, we estimated a 2.4 months total gain in life expectancy in patients treated with CABG,  
332 compared to patients treated with PCI, indicating a favorable outcome of CABG. Interestingly, we  
333 also observed a progressively longer life expectancy in CABG compared with PCI, as revealed by  
334 analysis of RMST at 5, 8 and 10 years.

335 As previous IPD meta-analyses of RCTs (5,6,24) have already reported heterogeneous results of  
336 5-year overall mortality in patients with LMD and/or MVD treated with CABG or PCI with DES,  
337 we thought it would be interesting to perform the landmark analysis at a cut-off time of 5 years,  
338 although the PHA not being violated. Interestingly, the incidence of all-cause mortality was  
339 significantly greater with PCI at the 0–5-year interval, while no difference was observed at the 5-  
340 10-year interval. The reasons for these different scenarios are multifactorial. One explanation  
341 could be related to the follow-up available in the FREEDOM trial, which reported data of 8-year  
342 follow-up including patients from only 25 of the 141 participating centers that agreed to participate  
343 in the extended follow-up study. Another explanation could be related to the CV-related death  
344 outcome that might be challenging to define even in RCTs, and therefore it could be plausible that  
345 CV death was not assigned appropriately in both interventions.

346 Several factors, including the extensive use of multiple arterial grafts (MAG) and performing graft  
347 anastomosis distal to the coronary stenosis, are associated with the significant reduction in  
348 mortality incidence in long-term follow-up. Several studies have reported a very high late survival  
349 rate (beyond 10-years) in patients who underwent CABG with MAG and these findings should be  
350 considered in Heart Team discussions (25-29). At the same time, advances in DES technology and

351 increased adherence to dual antiplatelet therapy could really help to increasingly reduce the  
352 incidence of mortality and complications after PCI (30,31).

353 To the best of our knowledge, this study represents the first study-level IPD meta-analysis of RCTs  
354 focusing on follow-up beyond 5-years and has important clinical implications. Firstly, it includes  
355 trials with follow-up longer than 5-years and some previously unreported data. Secondly, we  
356 performed a reconstructed IPD meta-analyses curve to generate aggregated Kaplan–Meier plots  
357 and perform landmark analyses of primary endpoint. This allowed assessment of the entire follow-  
358 up duration of each RCT, and to calculate the overall RMST of primary endpoint for each  
359 intervention.

360 Based on the available data extracted to analyze the secondary endpoints at longest follow-up, the  
361 principal findings include a comparable incidence of MI, stroke, CV death and composite of death,  
362 MI or stroke. Interestingly, incidence of repeat coronary revascularization and MACCE were  
363 higher in PCI. Analysis of secondary endpoints is of great interest to guide Heart-Teams in making  
364 the most appropriate choice between one of the two revascularization interventions in those  
365 clinical scenarios where patients present with CAD potentially treatable with CABG or PCI. In  
366 such situations, the choice of one treatment over the other should also be guided by long-term data  
367 on the incidence of stroke, MI, repeat revascularization, and CV death. Unfortunately, the paucity  
368 of such data and the different definitions of the related outcomes adopted in the protocol of the  
369 included studies, did not permit to standardize the endpoints and have more complete and  
370 confident long-term results. Of note, the all-cause mortality primary outcome has an undeniable  
371 and identical definition in all trials, while the other outcomes may also suffer from a bias in event  
372 measure. For instance, data on secondary endpoints were reported extensively in BEST and  
373 PRECOMBAT trials, while FREEDOM trial reported a paucity data regarding the incidence of  
374 stroke and myocardial infarction. Therefore, we recognize that results of secondary endpoints of  
375 this meta-analysis should be considered with caution.

376 This meta-analysis has several strengths and limitations to be highlighted. As strengths, this is the  
377 first meta-analysis on this topic beyond 5-years follow-up. We reconstructed the databases and  
378 simulated a patient-level meta-analysis. This allowed us to graph the survival curves of the merged  
379 studies and accurately analyze the risks at certain cut-off points. Sample size beyond 5-years was  
380 more than 3700 patients. As limitations, firstly, all trials in the analysis had different inclusion and  
381 exclusion criteria; therefore, many patients were not included in the randomization according to  
382 the decision of the Heart Team of each trial. This might explain why patients with SYNTAX score  
383 > 33 were poorly represented in all trials. Secondly, individual trial reported different endpoint  
384 definition. While all-cause mortality is an unbiased measure outcome in all included trial, the other  
385 outcomes of interest were reported heterogeneously. Finally, the trials occurred in a period of more  
386 than 10 years and different DES technology and generations were used.

387

### 388 **Conclusion**

389 In conclusion, in patients with LMD and or MVD there was a significantly overall higher incidence  
390 of all-cause mortality after PCI compared to CABG beyond 5-year follow-up. Specifically, CABG  
391 is still favorable beyond 5 years and maintains its gold standard role for the CAD treatment; PCI  
392 has an evident higher mortality during the first 5 years and a comparable outcome beyond 5 years.  
393 These results may help the Heart Team to tailor revascularization treatment and strategies for  
394 patients with LMD and MVD, favoring CABG for young patients and those with a life expectancy  
395 of at least 10 years, taking also into account that at 10 years after intervention, the life expectancy  
396 of CABG patients is significantly longer than that of PCI subjects by 2.4 months.

397

398

399

400

401

402

### 403 **Role of funding source**

404 This meta-analysis was performed without funding.

### 405 **Acknowledgement**

406 The authors wish to thank Giorgia Pavan for her tireless contribution in English revision of the  
407 manuscript and Evelina Ceccato (medical librarian at University of Parma, Italy) for her precious  
408 support in literature search.

### 409 **Data Availability Statement**

410 The data collection forms, data extracted from included studies and all other data and materials  
411 used in this meta-analysis will be available and sharable on specific and reasonable request to the  
412 corresponding author.

413 **Conflict of interest:** none declared

414

### 415 **Legends**

416 **Figure 1. (B)** Kaplan–Meier incidence function plot of reconstructed individual patient data  
417 analysis for all-cause mortality following coronary artery bypass grafting (CABG) or  
418 percutaneous coronary intervention (PCI) and 10-year restricted mean survival time (RMST).

419 **(B)** Landmark analysis for all-cause mortality following CABG or PCI. **(C)** Hazard ratio trend  
420 over time for all-cause CABG versus PCI estimated by fully parametric model for survival  
421 analysis.

422 *HR, hazard ratio; OR, odd ratio; CI, confidence interval.*

423

424 **Figure 2. (A)** Overall effect for all-cause mortality at longest follow-up following coronary  
425 artery bypass grafting (CABG) or percutaneous coronary intervention (PCI).

426 *OR, odd ratio; CI, confidence interval;*

427

428 **Figure 3. (A)** Overall effect for myocardial infarction at longest follow-up following coronary  
429 artery bypass grafting (CABG) or percutaneous coronary intervention (PCI). **(B).** Overall effect  
430 for repeat coronary revascularization at longest follow-up following CABG or PCI. **(C)** Overall  
431 effect for composite of all-cause mortality, myocardial infarction or stroke at longest follow-up  
432 following CABG or PCI. **(D)** Overall effect for stroke at longest follow-up following CABG or  
433 PCI. **(E)** Overall effect for cardiovascular death at longest follow-up following CABG or PCI.  
434 **(F)** Overall effect for major adverse and cerebrovascular event (MACCE) at longest follow-up  
435 following CABG or PCI.

436 *OR, odd ratio; CI, confidence interval;*

437

438

439

440

441

442

443

444

445

446 Table1. Baseline variables of enrolled patients.

447

	BEST				FREEDOM <sup>a</sup>				PRECOMBAT				SYNTAX			
	PCI		CABG		PCI		CABG		PCI		CABG		PCI		CABG	
No. of patients	438		442		475/953		482/947		300		300		903		897	
	Mean or no.	SD or %	Mean or no.	SD or %	Mean or no.	SD or %	Mean or no.	SD or %	Mean or no.	SD or %	Mean or no.	SD or %	Mean or no.	SD or %	Mean or no.	SD or %
Age	64	9,3	64,9	9,4	62,9	9,3	63,1	9,4	61,8	10	62,7	9,5	65,2	9,7	65	9,8
Male sex	304	69,4	325	73,5	361	76	344	71,4	228	76	231	77	690	76,4	708	78,9
BMI	24,7	2,9	25	2,9	29,7	5,2	29,9	5,4	24,6	2,7	24,5	3	28,1	4,8	27,9	4,5
Medical diabetes																
<i>Any</i>	177	40,4	186	42,1	953	100	947	100	102	34	90	30	231	25,6	221	24,6
<i>Requiring Insuline</i>	20	84,6	18	4,1	322	33,8	293	947	10	3,3	9	3	89	9,9	93	10,4
Hypertension	296	67,6	295	66,7	411	86,5	407	84,4	163	54,3	154	51,3	630	69,8	574	64
Hyperlipidemia	239	54,6	222	50,2	--	--	--	--	127	4,3	120	40	711	78,7	692	77,2
Smoker (current)	88	20,1	89	20,1	80	16,8	82	17	89	29,7	83	27,7	167	18,5	197	22
Previous PCI	30	6,8	38	8,6	--	--	--	--	38	12,7	38	12,7	--	--	--	--
Previous MI	25	5,7	29	6,6	109	22,9	96	19,9	13	4,3	20	6,7	288	31,9	303	33,8
Previous CHF	16	3,7	12	2,7	--	--	--	--	0	0	2	0,7	36	4	47	5,3
Previous stroke	37	8,4	33	7,5	25	5,7	21	4,4					35	3,9	43	4,8
Chronic Renal failure	9	2,1	7	1,6	--	--	--	--	4	1,3	1	0,3				
PVD	15	3,4	12	2,7	--	--	--	--	15	5	7	2,3	73	8,1	75	8,4
COPD	8	1,8	6	1,4	--	--	--	--	6	2	10	3,3				
Clinical presentation																
<i>Stable angina</i>	210	47,9	204	46,2	--	--	--	--	160	53,3	137	45,7	514	56,9	513	57,2
<i>Unstable angina</i>	185	42,2	199	45	--	--	--	--	128	42,7	144	48	261	28,9	251	28

<i>AMI (&lt;90 days)</i>	43	9,8	39	8,8	--	--	--	--	--	--	--	--	--	--	--	--
<i>Recent MI (within 7 days of random)</i>	--	--	--	--	--	--	--	--	--	--	--	--	--	--	--	--
<i>Recent acute coronary syndrome</i>	--	--	--	--	161	33,9	152	31,5	--	--	--	--	--	--	--	--
<i>Unstable angina and recent NSTEMI</i>	--	--	--	--	--	--	--	--	12	4	19	6,3	--	--	--	--
EF	59,1	8,5	59,9	8,1	65,7	12,1	66,6	10,5	61,7	8,3	60,6	8,5	--	--	--	--
N of diseased vessels																
3	330	75,3	349	79	394/474	83,1	414/480	86,3	122	40,7	123	41	546	60	549	61
2	108	24,7	93	21	--	--	--	--	101	33,7	90	30	--	--	--	--
EuroSCORE																
<i>mean score</i>	2,9	2	3	2,1	2,8	2,7	2,8	2,8	2,6	1,8	2,8	1,9	2,8	2,6	3,8	2,7
<i>median</i>					2,0	(1,3-3,2)	2,1	(1,3-3,3)	--	--	--	--	--	--	--	--
SYNTAX score																
<i>mean score</i>	24,2	7,5	24,6	8,1	26,9	8,2	26,1	8,1	24,3	9,6	25,3	10,9	28,4	11,5	29,1	11,4
<i>median</i>	--	--	--	--	27	(21-31,5)	26	(20-31)	--	--	--	--	--	--	--	--
>=33	66	15,1	79	17,9	98	20,6	92/479	19,2	58	19,3	68	22,7	290	32,1	315	35,1
22-32	187	42,7	177	40,0	228	48	220/479	45,9	102	34,0	97	32,3	310	34,3	300	33,4
<=22	185	42,2	186	42,5	149	31,4	167/479	34,9	129	43,0	104	34,7	299	33,1	275	30,7

448

449 a) FREEDOM trial data refer to whole cohort; PCI, percutaneous coronary intervention; CABG, coronary artery bypass grafting; BMI, body mass index; MI, myocardial  
450 infarction; CHF, congestive heart failure; PVD, peripheral vascular disease; COPD; chronic obstructive pulmonary disease; EF, ejection fraction.

451

452

453

454 Table 2. Baseline characteristics of trials included in the meta-analysis

455

Study acronym - year	Study period	Study design	Total patients	CABG	PCI-DES	Entry criteria	Stent Type	Primary outcome	Secondary outcomes	Follow-up (median)
<b>FREEDOM (NCT00086450) 2019</b>	April 2005 - April 2010	Multicenter 25/141 sites	1900	947	953	≥70% stenosis 2 or 3 vessel CAD Only diabetes No LM disease	Sirolimus - eluting and paclitaxel-eluting stents	Composite of death from any cause, nonfatal myocardial infarction and nonfatal stroke	Major adverse cardiovascular and cerebrovascular events 30 days and 12 months after the procedure (including components of the primary outcome as well as repeat revascularization) and annual all-cause and cardiovascular mortality.	7,5 (IQR 5 to 9)
<b>SYNTAX (NCT03417050) 2019</b>	March 2005 - April 2007	Multicenter 85 sites	1800	897	903	≥70% stenosis 2 or 3 vessel CAD and ≥50% LMCA visual stenosis.  Silent ischemia or stable/unstable angina.	Paclitaxel-eluting	Composite rate of MACCE at 1 year, defined as all-cause mortality, stroke, myocardial infarction, and repeat revascularisation.	MACCE rates at 1 month, 6 months, 3 years, and 5 years, rates of the individual MACCE components; rates of stent thrombosis or graft occlusion.	11.2 (IQR 7.7-12.1)
<b>PRECOMBAT (NCT03871127 and NCT00422968) 2021</b>	April 2004 - August 2009	Multicenter 13 sites	600	300	300	Unprotected left main coronary artery (ULMCA) stenosis (>50% by visual estimation) with or without any additional target lesions	Sirolimus-eluting	Composite of all-cause mortality, MI, stroke or ischaemia-driven revascularisation at 1-year follow-up	Individual components of the primary endpoint; composite of death, MI, or stroke; and clinically driven revascularization	11,3 (IQR 10,2-13)



						(>70% by visual estimation).				
<b>BEST (NCT05125367 and NCT00997828) 2022</b>	July 2008 - September 2013	Multicenter 27 sites	1776	442	438	CAD 2 or 3 vessel disease - no LMD; stenosis > 70%; indication for revascularization based on symptoms of angina or evidence of myocardial ischemic	Everolimus-eluting	Composite of death, myocardial infarction or target-vessel revascularization at 5 years follow-up	Composite of death, myocardial infarction, or stroke and a composite of death, myocardial infarction, stroke, or any repeat revascularization. Individual components of the composite endpoints; stent thrombosis and major or fatal bleeding.	11,8 (IQR 10,6-12,5)

456

457

PCI, percutaneous coronary intervention; CABG, coronary artery bypass grafting; CAD, coronary artery disease; DES, drug-eluting stent; LMD, left main disease.

458

459

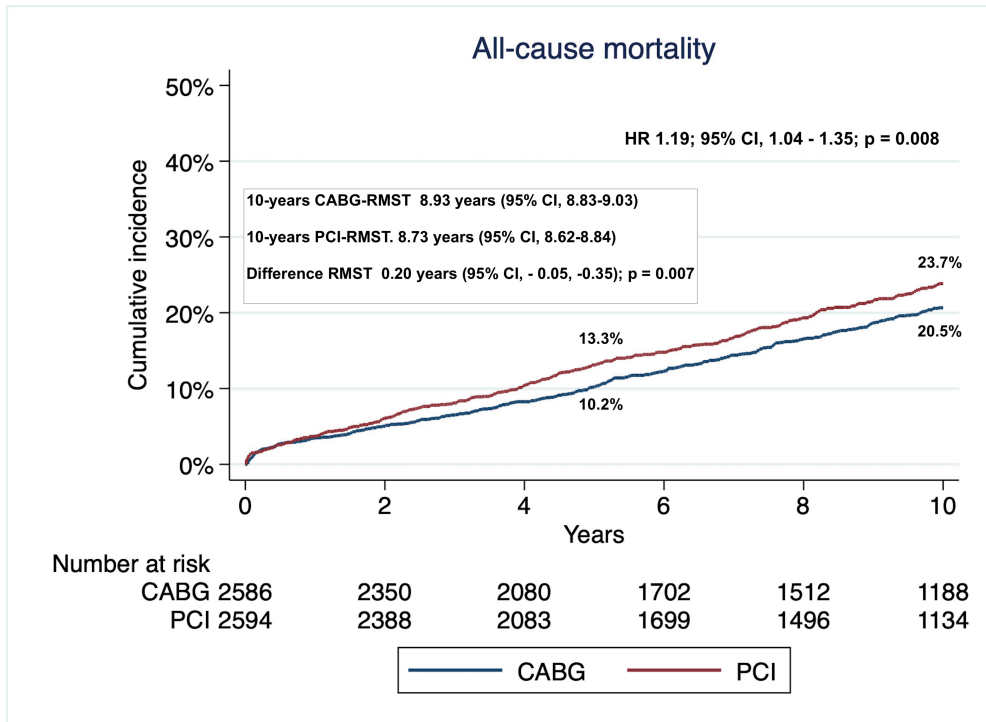
460

461

462

463

464

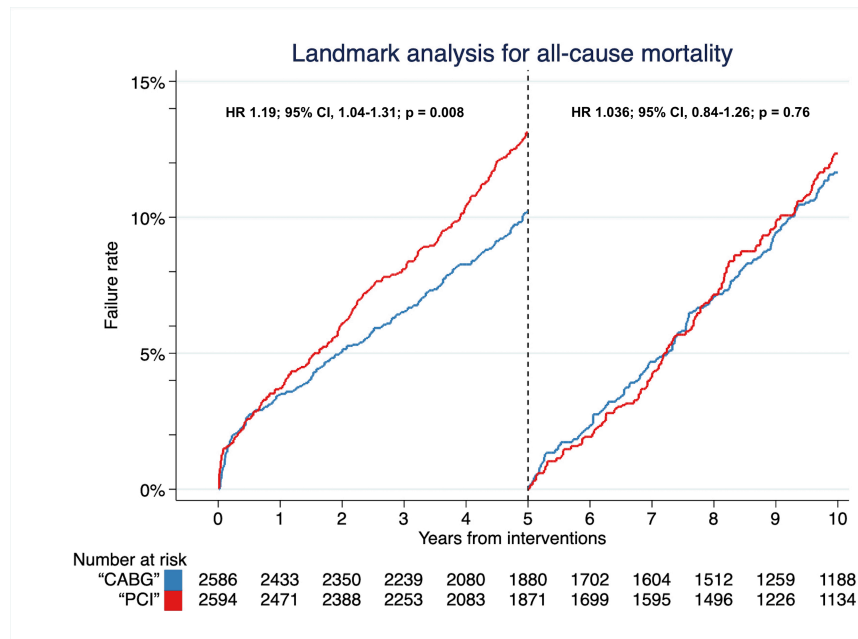


465

466

**Fig. 1A**

467



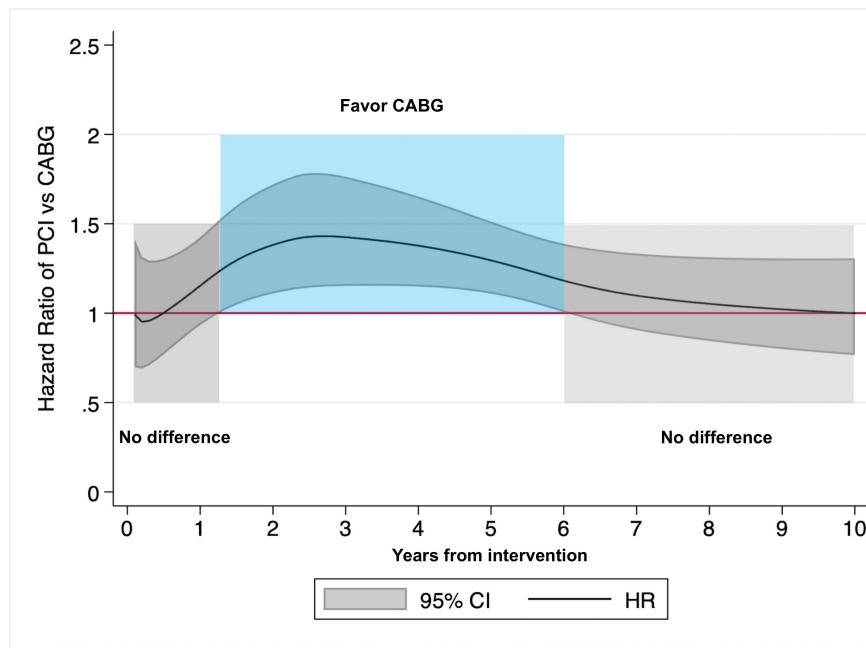
468

469

470

**Fig. 1B**

471



472

473

474

475

476

477

478

479

480

481

482

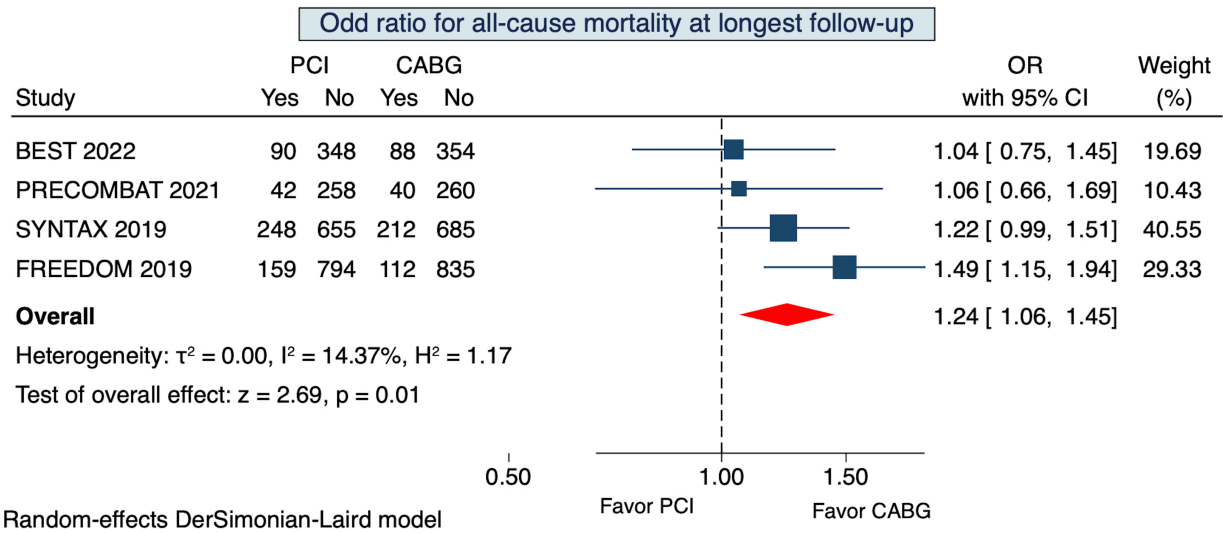
483

484

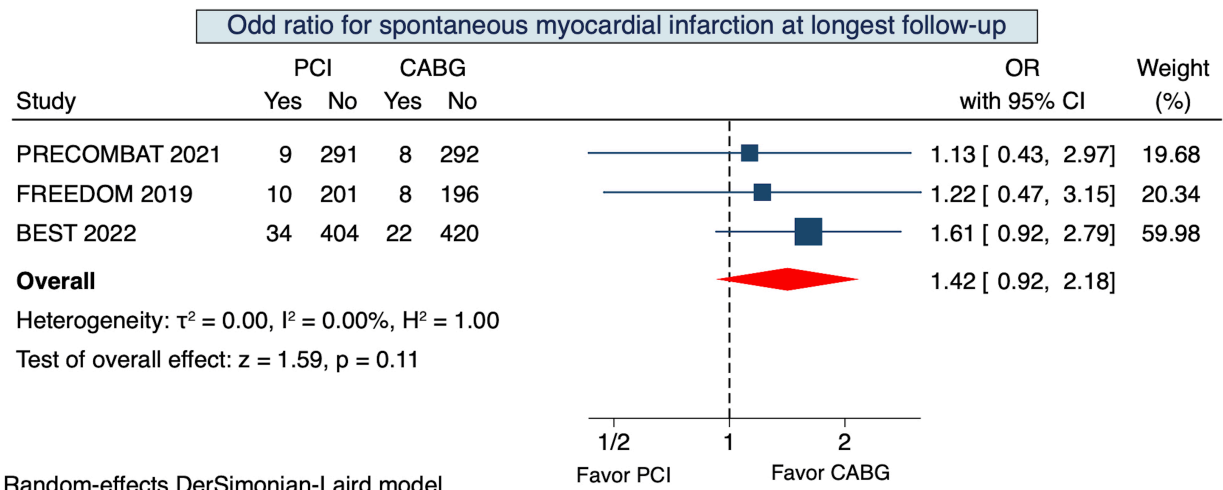
485

486

**Fig. 1C**

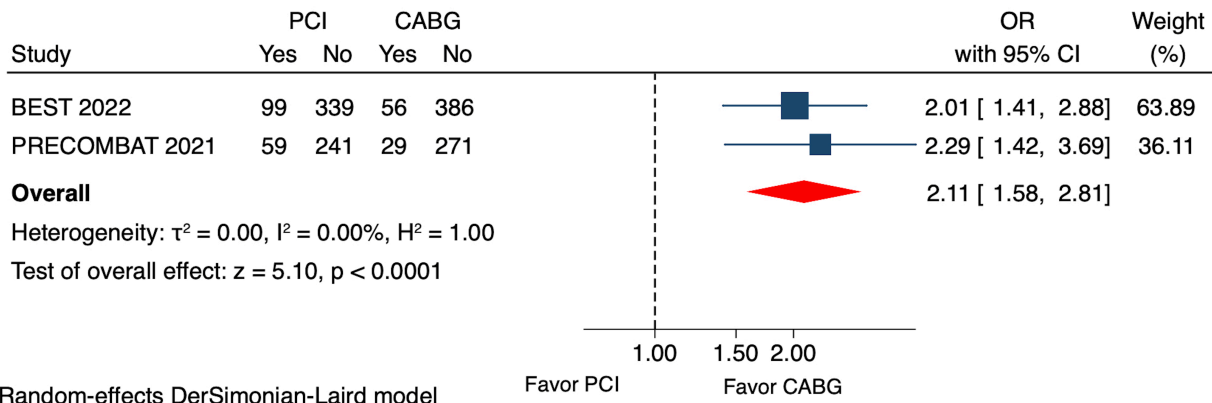


**Fig. 2**



**Fig. 3A**

Odd ratio for repeat coronary revascularization at longest follow-up



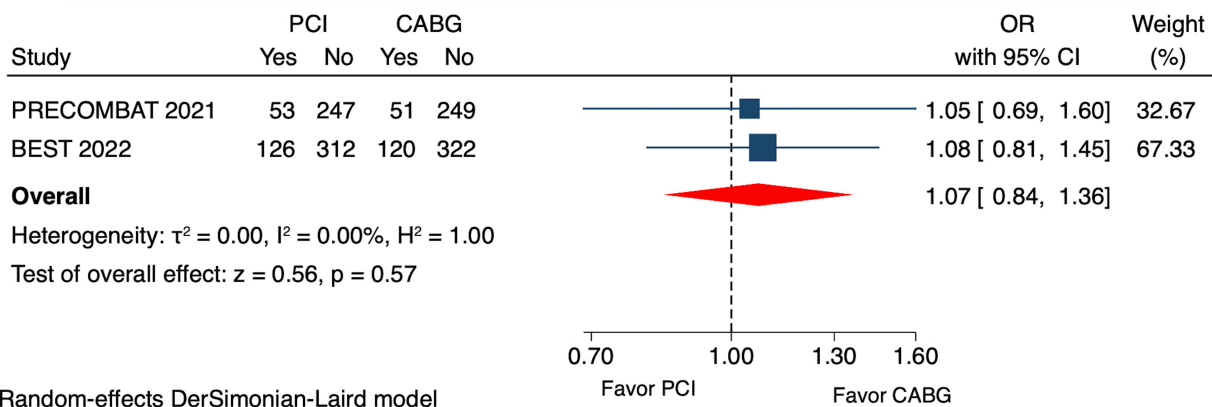
499

500

**Fig. 3B**

501

Odd ratio for composite of any death, myocardial infarction or stroke at longest follow-up



502

503

**Fig. 3C**

504

505

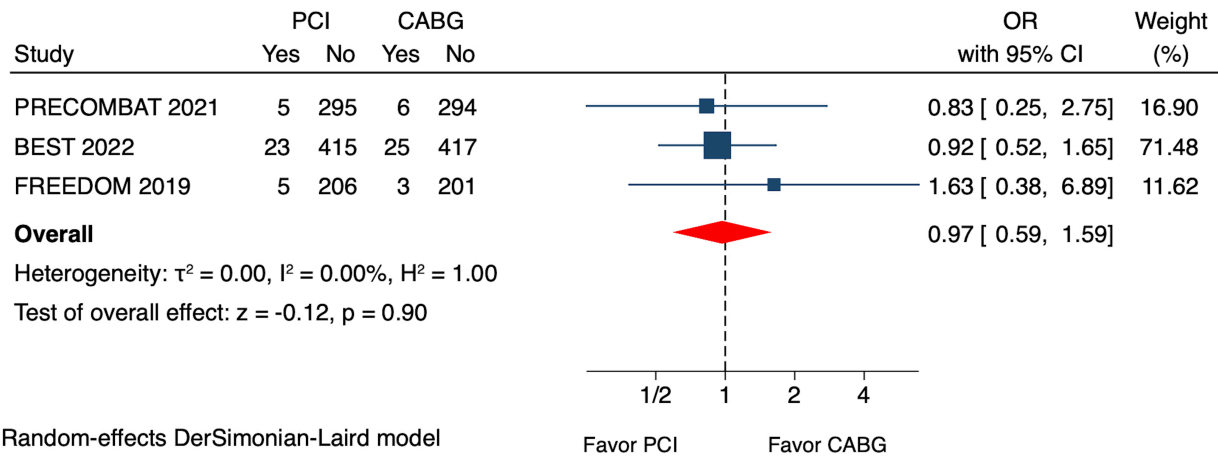
506

507

508

509

Odd ratio for stroke at longest follow-up



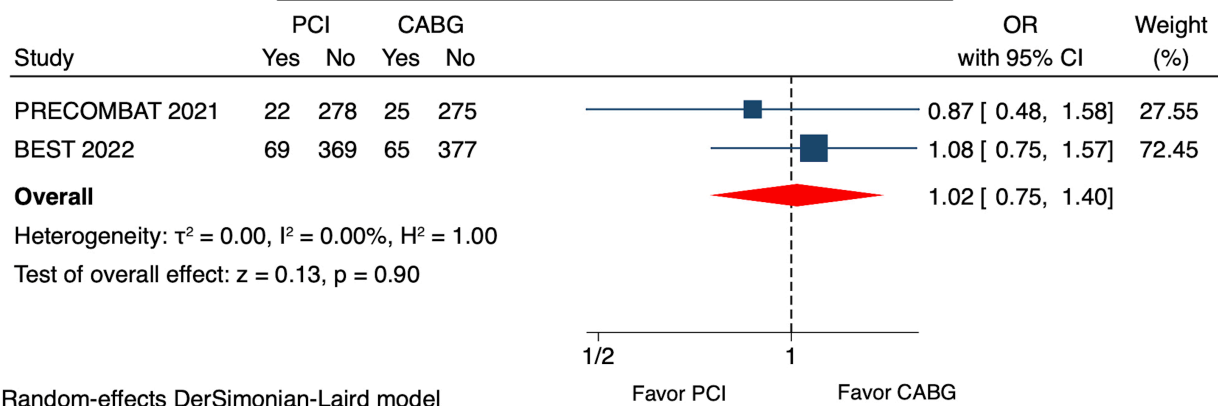
510

511

512

Fig. 3D

Odd ratio for cardiovascular death at longest follow-up



513

514

515

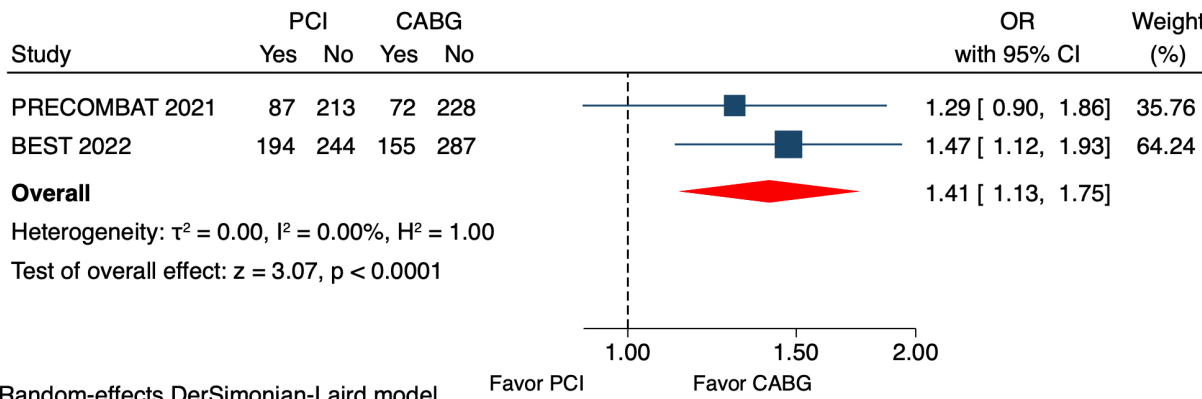
516

517

518

Fig. 3E

Odd ratio for MACCE at longest follow-up



519

520

521

**Fig. 3F**

522

523

524

525

526

527

528

529

530

531

532

533

534

535

536

537

538

539

540

541 **References**

542

543 1) Neumann FJ, Sousa-Uva M, Ahlsson A, et al.; ESC Scientific Document Group. 2018  
544 ESC/EACTS Guidelines on myocardial revascularization. *Eur Heart J.* 2019;40:87-165.

545 2) Lawton JS, Tamis-Holland JE, Bangalore S, et al. 2021 ACC/AHA/SCAI Guideline for  
546 Coronary Artery Revascularization: Executive Summary: A Report of the American  
547 College of Cardiology/American Heart Association Joint Committee on Clinical Practice  
548 Guidelines. *J Am Coll Cardiol.* 2022;79:197-215.

549 3) <https://ec.europa.eu/eurostat/web/products-eurostat-news/-/EDN-20170930-1> (last access  
550 3d, March 2023)

551 4) <https://www.ssa.gov/oact/STATS/table4c6.html> (last access 3d, March 2023)

552 5) Sabatine MS, Bergmark BA, Murphy SA, et al. Percutaneous coronary intervention with  
553 drug-eluting stents versus coronary artery bypass grafting in left main coronary artery  
554 disease: an individual patient data meta-analysis. *Lancet.* 2021;398:2247-2257.

555 6) Head SJ, Milojevic M, Daemen J, et al. Mortality after coronary artery bypass grafting  
556 versus percutaneous coronary intervention with stenting for coronary artery disease: a  
557 pooled analysis of individual patient data. *Lancet.* 2018;391:939-948.

558 7) Gaudino M, Hameed I, Farkouh ME, et al. Overall and Cause-Specific Mortality in  
559 Randomized Clinical Trials Comparing Percutaneous Interventions With Coronary Bypass  
560 Surgery: A Meta-analysis. *JAMA Intern Med.* 2020;180:1638-1646.

561 8) Deeks JJ, Higgins JPT, Altman DG. Chapter 10: Analysing data and undertaking meta-  
562 analyses. In: Higgins JPT, Thomas J, Chandler J, Cumpston M, Li T, Page MJ, Welch  
563 VA. *Cochrane Handbook for Systematic Reviews of Interventions* version 6.3 (updated  
564 February 2022). Cochrane, 2022.



- 565 9) Moher D, Liberati A, Tetzlaff J, et al; PRISMA Group. Preferred reporting items for  
566 systematic reviews and meta-analyses: the PRISMA Statement. *Open Med.* 2009;3:e123-  
567 30.
- 568 10) Stene JAC, Savovic J, Page MJ, et al. RoB2: a revised tool for assessing risk of bias in  
569 randomized trials. *BMJ* 2019;366:I4898.
- 570 11) Hozo SP, Djulbegovic B, Hozo I. Estimating the mean and variance from the median,  
571 range, and the size of a sample. *BMC Med Res Methodol.* 2005;5:13.
- 572 12) Richard D. Riley, Thomas P.A. Debray, Tim P. Morris, and Dan Jackson. The Two-stage  
573 Approach to IPD Meta-Analysis.
- 574 13) Higgins JP, Thompson SG. Quantifying heterogeneity in a meta-analysis. *Stat Med*  
575 2002;21:1539–58.
- 576 14) Wei Y, Royston P. Reconstructing time-to-event data from published Kaplan-Meier  
577 curves. *Stata J.* 2017;17:786-802.
- 578 15) Liu N, Zhou Y, Lee JJ. IPD from KM: reconstruct individual patient data from published  
579 Kaplan-Meier survival curves. *BMC Med Res Methodol.* 2021;21:111.
- 580 16) Diaz R, Hernandez-Vaquero D, Alvarez-Cabo R, Avanzas P, Silva J, Moris C, Pascual I.  
581 Long-term outcomes of mechanical versus biological aortic valve prosthesis: Systematic  
582 review and meta-analysis. *J Thorac Cardiovasc Surg.* 2019 Sep;158(3):706-714).
- 583 17) Viechtbauer W, Cheung MW. Outlier and influence diagnostics for meta-analysis. *Res*  
584 *Synth Methods.* 2010;1:112-25.
- 585 18) Wei Y, Royston P, Tierney JF, et al. Meta-analysis of time-to-event outcomes from  
586 randomized trials using restricted mean survival time: application to individual participant  
587 data. *Stat Med.* 2015;34:2881-2898.
- 588 19) Royston P, Parmar MK. Restricted mean survival time: an alternative to the hazard ratio  
589 for the design and analysis of randomized trials with a time-to-event outcome. *BMC Med*  
590 *Res Methodol.* 2013;13:152.

- 591 20) Ahn JM, Kang DY, Yun SC, Ho Hur S, Park HJ, Tresukosol D, et al. Everolimus-Eluting  
592 Stents or Bypass Surgery for Multivessel Coronary Artery Disease: Extended Follow-Up  
593 Outcomes of Multicenter Randomized Controlled BEST Trial. *Circulation*.  
594 2022;146:1581-1590.
- 595 21) Farkouh ME, Domanski M, Dangas GD, Godoy LC, Mack MJ, Siami FS, et al; FREEDOM  
596 Follow-On Study Investigators. Long-Term Survival Following  
597 Multivessel Revascularization in Patients With Diabetes: The FREEDOM Follow-On  
598 Study. *J Am Coll Cardiol*. 2019;73:629-638.
- 599 22) Jeong YJ, Ahn JM, Hyun J, Lee J, Kim JH, Yang Y, et al. Ten-year Outcomes After Drug-  
600 Eluting Stents or Bypass Surgery for Left Main Coronary Disease in Patients With and  
601 Without Diabetes Mellitus: The PRECOMBAT Extended Follow-Up Study. *J Am Heart*  
602 *Assoc*. 2021;10:e019834.
- 603 23) Thuijs DJFM, Kappetein AP, Serruys PW, Mohr FW, Morice MC, Mack MJ, et al.  
604 SYNTAX Extended Survival Investigators. Percutaneous coronary intervention versus  
605 coronary artery bypass grafting in patients with three-vessel or left main coronary artery  
606 disease: 10-year follow-up of the multicentre randomised controlled SYNTAX trial.  
607 *Lancet*. 2019;394:1325-1334.
- 608 24) Ahmad Y, Howard JP, Arnold AD, et al. Mortality after drug-eluting stents vs. coronary  
609 artery bypass grafting for left main coronary artery disease: a meta-analysis of randomized  
610 controlled trials. *Eur Heart J*. 2020;41:3228-3235.
- 611 25) Thuijs DJFM, Davierwala P, Milojevic M, et al; SYNTAX Extended Survival  
612 Investigators. Long-term survival after coronary bypass surgery with multiple versus single  
613 arterial grafts. *Eur J Cardiothorac Surg*. 2022;61:925-933.
- 614 26) Taggart DP, Gaudino MF, Gerry S, et al.; ART investigators. Effect of total arterial grafting  
615 in the Arterial Revascularization Trial. *J Thorac Cardiovasc Surg*. 2022;163:1002-1009.e6.

- 616 27) Formica F, Maestri F, D'Alessandro S, et al. Survival effect of radial artery usage in  
617 addition to bilateral internal thoracic arterial grafting: A meta-analysis. *J Thorac*  
618 *Cardiovasc Surg.* 2021 Epub ahead of print.
- 619 28) Formica F, D'Alessandro S, Singh G, et al. The impact of the radial artery or the saphenous  
620 vein in addition to the bilateral internal mammary arteries on late survival: A propensity  
621 score analysis. *J Thorac Cardiovasc Surg.* 2019;158:141-151.
- 622 29) Pevni D, Mohr R, Kramer A, Paz Y, Neshet N, Ben-Gal Y. Are two internal thoracic grafts  
623 better than one? An analysis of 5301 cases. *Eur J Cardiothorac Surg.* 2019;56:935-941.
- 624 Franziska H, Fred R. Management of Acute Ischemic Stroke. *Critical Care Medicine,*  
625 *2020;48:1654-1663.*
- 626 30) Laudani C, Greco A, Occhipinti G, Ingala S, Calderone D, Scalia S, et al. Short Duration  
627 of DAPT Versus De-Escalation After Percutaneous Coronary Intervention for Acute  
628 Coronary Syndromes. *J Am Coll Cardiol Interv.* 2022;3:268–277.
- 629 31) Angiolillo DJ, Galli M, Collet JP, Kastrati A, O'Donoghue ML, Antiplatelet therapy after  
630 percutaneous coronary intervention. *EuroIntervention* 2022;17:e1371-e1396.

631

632

633

634

635

636

637

638

639

640

641

642

643

644

645

646

647

648

649  
650  
651  
652  
653

## Supplementary material

Table S1. Algorithm literature search

Search	<b>PUBMED</b>	
#1	((("coronary artery bypass"[Title/Abstract] OR "cabg"[Title/Abstract]) AND 2010/01/01:2023/01/31[Date - Publication]) AND (2010/1/1:2023/1/31[pdat]))	23,119
#2	((("drug eluting stent"[Title/Abstract] OR "des"[Title/Abstract] OR "stenting"[Title/Abstract]) AND 2010/01/01:2023/01/31[Date - Publication]) AND (2010/1/1:2023/1/31[pdat]))	41,772
#3	((("percutaneous coronary intervention"[Title/Abstract] OR "pci"[Title/Abstract]) AND 2010/01/01:2023/01/31[Date - Publication]) AND (2010/1/1:2023/1/31[pdat]))	40,603
#4	((("left main disease"[Title/Abstract] OR "left main coronary artery disease"[Title/Abstract]) AND 2010/01/01:2023/01/31[Date - Publication]) AND (2010/1/1:2023/1/31[pdat]))	1,227
#5	("multivessel coronary artery disease"[Title/Abstract] AND 2010/01/01:2023/01/31[Date - Publication]) AND (2010/1/1:2023/1/31[pdat])	914
#6	#1 AND #2 AND #3 AND #4 OR #5	1064
#7	("randomised"[Title/Abstract] OR "randomized"[Title/Abstract] OR "trial"[Title/Abstract]) AND (2010/1/1:2023/1/31[pdat])	737,198
#8	("long term follow up"[Title/Abstract] OR "extended follow up"[Title/Abstract]) AND (2010/1/1:2023/1/31[pdat])	39,605
#9	#7 AND #8	6,339
#10	#6 AND #9	<b>27</b>
<b>EMBASE</b>		
#1	('coronary artery bypass' OR 'cabg':ab,ti) AND [2010-2023]/py	67,901
#2	('drug-eluting stent' OR 'des' OR 'stenting':ti,ab) AND [2010-2023]/py	373,598

#3	('percutaneous coronary intervention' OR 'pci':ti,ab) AND [2010-2023]/py	108,182
#4	('left main disease' OR 'left main coronary artery disease':ti,ab) AND [2010-2023]/py	2,511
#5	'multivessel coronary artery disease':ti,ab AND [2010- 2023]/py	1,624
#6	( <b>randomized</b> OR <b>randomised</b> OR <b>trial</b> :ab,ti) AND [2010- 2023]/py	1,388,705
#7	#1 AND #2 AND #3 AND #4	449
#8	('long term follow-up' OR 'extended follow-up' AND [2010-2023]/py	71,382
#9	#6 AND #7 AND #8	<b>72</b>
<b>CENTRAL</b>		
#1	(left main disease):ti,ab,kw OR (left main coronary artery disease):ti,ab,kw (Word variations have been searched) with Publication Year from 2010 to 2023, in Trials	1747
#2	(multivessel coronary artery disease):ti,ab,kw with Publication Year from 2010 to 2023, in Trials (Word variations have been searched)	189
#3	(percutaneous coronary intervention):ti,ab,kw OR ("PCI"):ti,ab,kw (Word variations have been searched) with Publication Year from 2010 to 2023, in Trials	11849
#4	("drug eluting stent"):ti,ab,kw OR (des):ti,ab,kw OR (stenting):ti,ab,kw with Publication Year from 2010 to 2023, in Trials (Word variations have been searched)	13973
#5	("coronary artery bypass"):ti,ab,kw OR (cabg):ti,ab,kw with Publication Year from 2010 to 2023, in Trials (Word variations have been searched)	7608
#6	(randomized):ti,ab,kw OR (trial):ti,ab,kw OR (randomised):ti,ab,kw with Publication Year from 2010 to 2023, in Trials (Word variations have been searched)	902056
#7	#1 AND #3 AND #4 AND #5	226
#8	#7 OR #2	410
#9	#8 AND #6	<b>376</b>

654  
655  
656  
657

658 Table S2. Risk of bias assessment using the Cochrane Collaboration revised tool for randomized  
659 control trials (RoB 2)  
660

Study	<u>D1</u>	<u>D2</u>	<u>D3</u>	<u>D4</u>	<u>D5</u>	<u>Overall</u>
FREEDOM 2012	Low risk	Low risk	Low risk	Low risk	Low risk	Low risk
SYNTAX 2013	Low risk	Low risk	Low risk	Low risk	Low risk	Low risk
PRECOMBAT 2015	Low risk	Low risk	Low risk	Low risk	Low risk	Low risk
BEST 2015	Low risk	Low risk	Low risk	Low risk	Low risk	Low risk
EXCEL 2019	Low risk	Low risk	Low risk	Low risk	Low risk	Low risk
NOBLE 2020	Low risk	Low risk	Low risk	Low risk	Low risk	Low risk

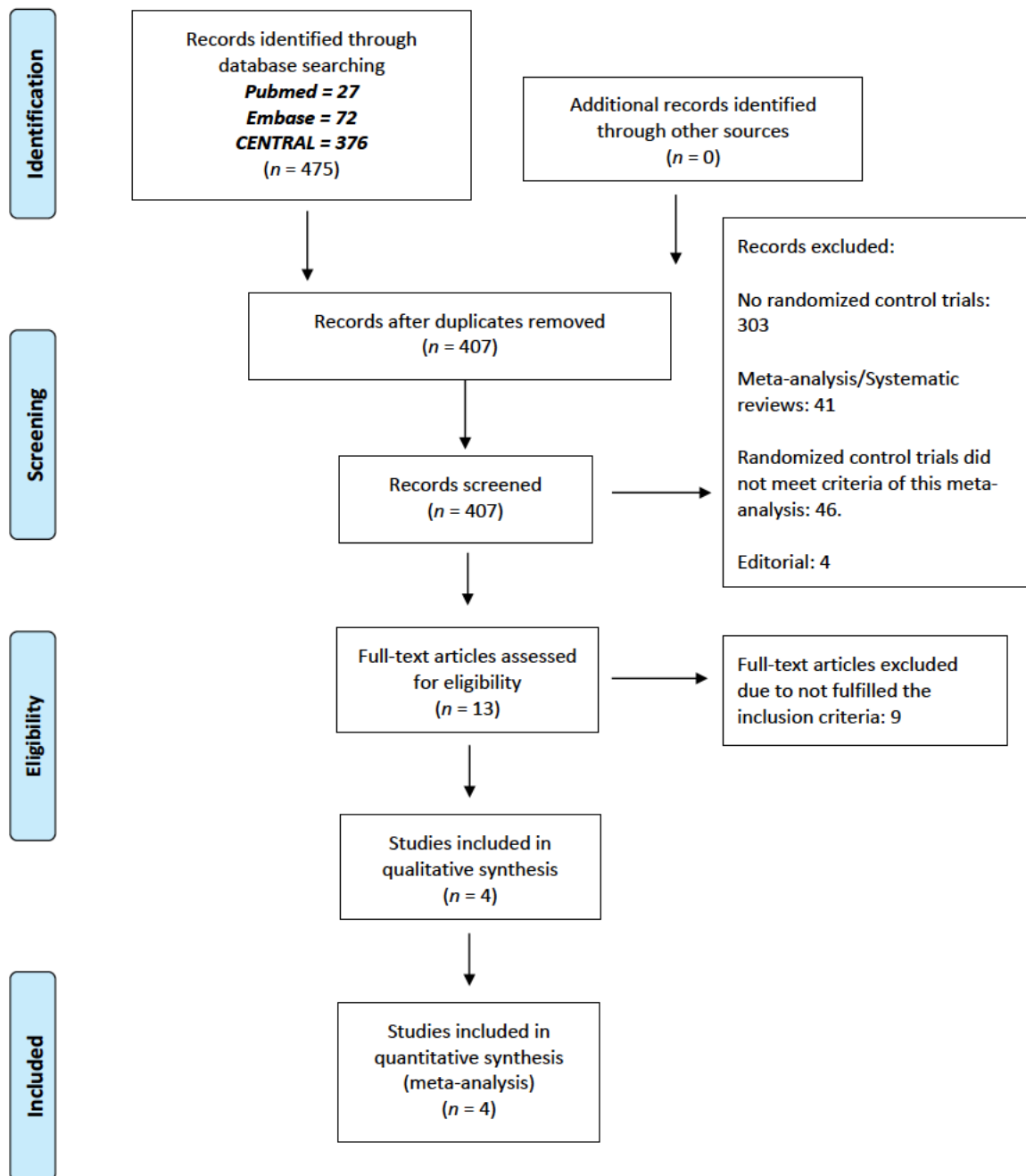
Low risk  
Some concerns  
High risk

- D1 Randomisation process
- D2 Deviations from the intended interventions
- D3 Missing outcome data
- D4 Measurement of the outcome
- D5 Selection of the reported result

661  
662  
663  
664  
665  
666  
667  
668  
669  
670  
671  
672  
673  
674  
675  
676  
677  
678  
679  
680  
681  
682  
683  
684

Fig. S1. The PRISMA Flow Chart of study selection process

### PRISMA 2009 Flow Diagram



685  
686  
687  
688  
689  
690  
691  
692  
693  
694  
695  
696  
697

698 **Table S3.** Endpoint definition of single trials

699

700

**Trial Enrollment Periods and Inclusion and Exclusion Criteria**

701

702

**SYNTAX**

703

704 Study Period: from March 2005 to April 2007

705 85 centres (Europe and USA) adhered to the SYNTAX protocol

706

707 Main inclusion criteria:

708 ○ Three vessel disease or left main disease (>50% stenosis or left main equivalent)

709 ○ No previous CABG or PCI

710 ○ Patients with stable or unstable angina or with evidence of documental ischemia if  
711 asymptomatic

712 ○ Decision by local Heart Team (cardiac surgeon and interventional cardiologist) that either  
713 CABG or PCI can realize equivalent anatomical revascularization.

714

715

716

**PRECOMBAT**

717

718 Study Period: from April 2004 to August 2009

719 13 centers in South Korea adhered to the PRECOMBAT protocol

720

721 Main inclusion criteria:

722

723 ○ diagnosis of stable angina, unstable angina, silent ischemia, or non-ST-segment elevation my  
724 ocardial infarction;

725 ○ new diagnosis of unprotected left main coronary artery (ULMCA) stenosis (>50% by  
726 angiographic visual estimation);

727 ○ patients were considered by local Heart Team (cardiac surgeon and interventional  
728 cardiologist) to be a suitable candidate for either PCI or CABG.

729

730 Main exclusion criteria:

731

732 ○ contraindication to any of the following medications: Heparin, Aspirin, Both clopidogrel and ticlo





- 763 rotid endarterectomy or carotid stent).
- 764 ○ Previous CABG
- 765 ○ Prior PCI with DES within 1 year.
- 766 ○ Two or more chronic total occlusions in major coronary territories.
- 767 ○ Acute ST-elevation myocardial infarction within 72 hours prior to enrollment.
- 768 ○ Abnormal creatine kinase (CK > 2× normal) and/or abnormal CK-MB levels and/or elevated t  
769 roponin levels at the time of randomization.
- 770 ○ Previous stroke within 6 months or stroke at more than 6 months with residual neurologic inv  
771 olvement.
- 772 ○ Extra-cardiac disease with life expectancy less than 2 years, e.g., COPD, active hepatitis, hep  
773 atic failure, or severe renal disease.
- 774 ○ Prior history of significant bleeding
- 775 ○ Contraindication to either CABG or PCI/DES due to a coexisting clinical condition.
- 776 ○ Intolerance or contraindication to aspirin or clopidogrel.
- 777 ○ Suspected pregnancy.
- 778 ○ Concurrent enrollment in another clinical trial.
- 779 ○ Left main coronary artery stenosis ( $\geq 50\%$  diameter).

780

781

## **FREEDOM**

782

783 Study Period: from April 2005 – to April 2010

784

785 141 sites worldwide adhered to the FREEDOM protocol.

786

787 Main key inclusion criteria:

- 788 ○ Patients with diabetes (Type 1 or Type 2) and angiographically confirmed multivessel  
789 coronary artery disease with stenosis of more than 70% in two or more major epicardial  
790 vessels involving least two separate coronary-artery territories and without left main coronary  
791 stenosis.

- 792 ○ multivessel disease suitable for either approach
- 793 ○ Indication for revascularization based upon symptoms of angina and/or objective evidence of
- 794 myocardial ischemia
- 795 ○ Willing to comply with all follow-up required study visits
- 796 ○ Signed and received copy of informed consent

797

798 Main key exclusion criteria:

- 799 ○ Two or more chronic total occlusions in major coronary territories.
- 800 ○ Abnormal creatine kinase (CK > 2x normal) level at coronary territories time of
- 801 randomization.
- 802 ○ Extra-cardiac illness with a life expectancy lower than 5 years
- 803 ○ Severe congestive heart failure Prior CABG surgery
- 804 ○ Prior cardiac valve surgery
- 805 ○ Prior PCI with DES within 6 months
- 806 ○ Previous stroke within 6 months or patients with stroke with significant residual neurologic
- 807 involvement
- 808 ○ In-stent restenosis of target vessel
- 809 ○ Left main stenosis ( $\geq 50\%$  diameter stenosis)
- 810 ○ Acute ST-elevation MI within 72 h before enrollment
- 811 ○ Planned simultaneous surgical procedure (eg, valve repair/replacement, aneurysmectomy,
- 812 carotid endarterectomy, or carotid stent)
- 813 ○ Contraindication to either CABG or PCI/DES
- 814 ○ Significant leukopenia, neutropenia, thrombocytopenia, anemia, or known bleeding diathesis
- 815 ○ Intolerance or contraindication to aspirin or both clopidogrel and ticlopidine.
- 816 ○ Dementia
- 817 ○ Suspected pregnancy
- 818 ○ Geographically inaccessible for follow-up visits required by protocol

819

820

821

822

823

824

825

826

827

828

829

830

831

832 Table S4. Restricted Mean Survival Time (RMST)

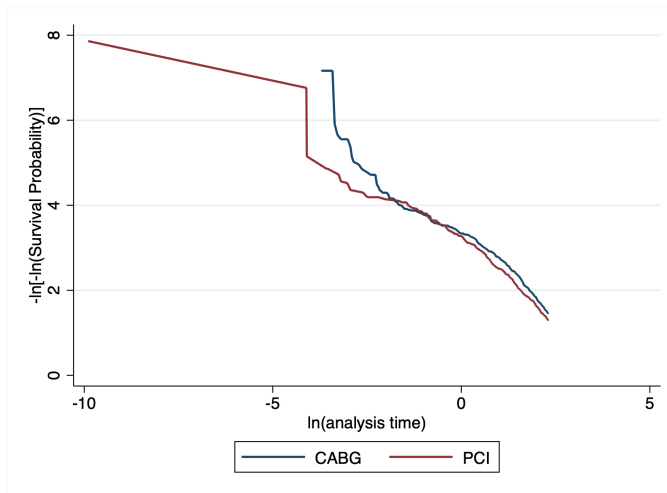
833  
834

RMST	CABG	PCI	RMST difference	p-value
5-years	4.71 (95% CI, 4.67-4.75) years	4.64 (95% CI, 4.60-4.68) years	0.07 years (25 days) (95% CI, 0.01-0.125;)	p=0.02
8-years	7.16 (95% CI, 7.08-7.24) years	7.30 (95% CI, 7.23-7.38) years	0.14 years (1.7 months) (95% CI, 0.03-0.25;)	p=0.009
10-years	8.93 (95% CI, 8.83-9.03) years	8.73 (95% CI, 8.62-8.84) years	0.20 years (95% CI, 0.05-0.35;)	p=0.007

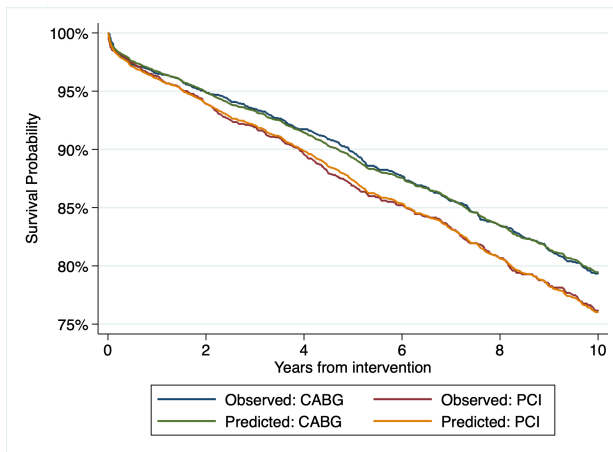
835  
836  
837  
838  
839  
840  
841  
842  
843  
844  
845  
846  
847  
848  
849  
850  
851  
852  
853  
854  
855  
856  
857  
858  
859  
860  
861  
862  
863  
864  
865  
866  
867  
868  
869  
870  
871  
872  
873  
874  
875

876  
877  
878  
879

**Fig. S2, S3, S4. ALL-CAUSE MORTALITY.**



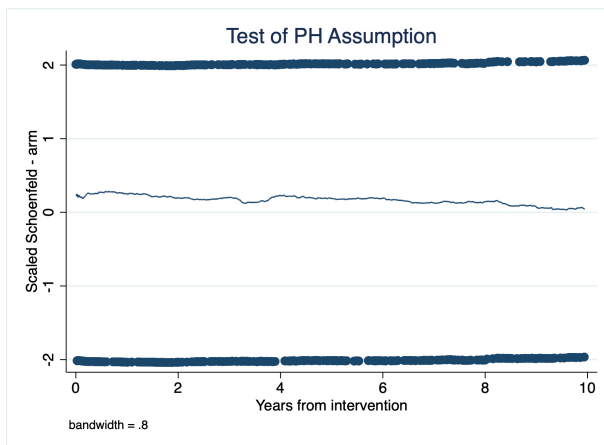
880



881  
882  
883  
884

**Fig. S2. Log-minus-log survival curves  
Predicted versus observed survival functions**

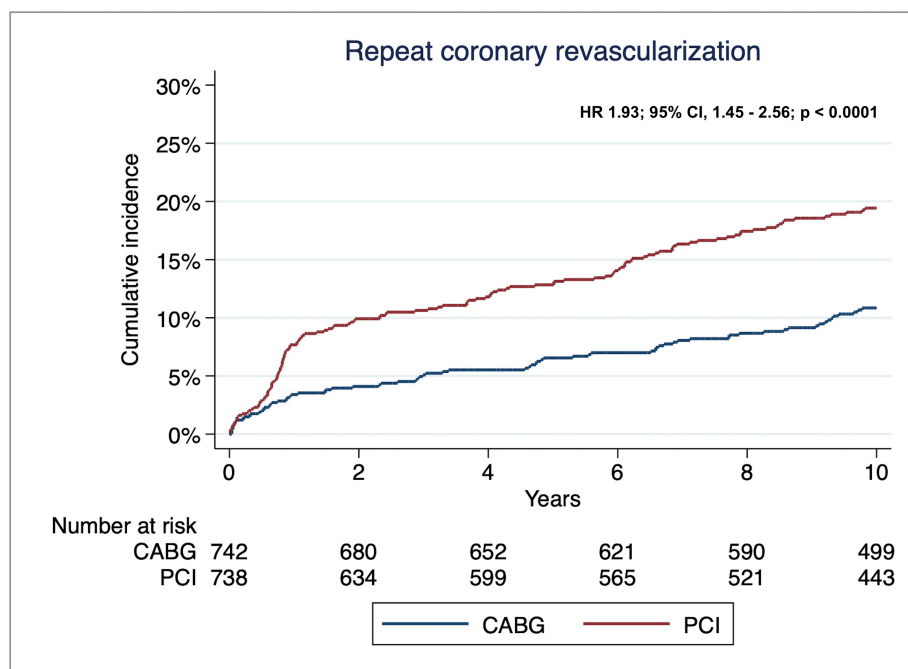
**Fig. S3.**



885  
886  
887  
888  
889  
890  
891  
892  
893

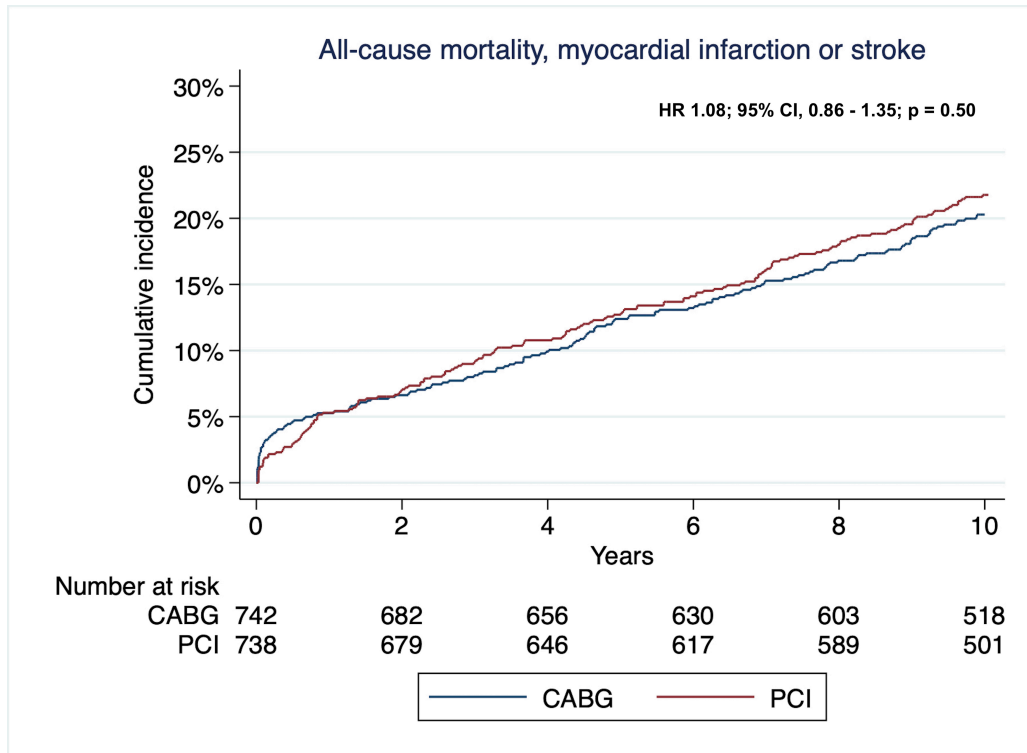
**Fig. S4. Scaled Schoenfeld residuals**

894 Fig. S5. Time-to-event reconstructed curves for repeat coronary revascularization  
895  
896



897  
898  
899  
900  
901  
902  
903  
904  
905  
906  
907  
908  
909  
910  
911  
912  
913  
914  
915  
916  
917  
918  
919  
920  
921  
922  
923  
924  
925  
926  
927

928 Fig. S6. Time-to-event reconstructed curves for composite endpoints of all-cause mortality,  
929 myocardial infarction or stroke  
930  
931



932  
933  
934  
935