

# 1 **Transboundary and Emerging Diseases**

## 2 **Estimating the importation risk of mpox virus in 2022 to Hong**

### 3 **Kong, China**

4 Mingda Xu<sup>1</sup>, Songwei Shan<sup>2,3</sup>, Zengyang Shao<sup>3</sup>, Yuan Bai<sup>2,3</sup>, Zhanwei Du<sup>2,3</sup>, Zhen Wang<sup>1,4</sup>,  
5 Chao Gao<sup>1\*</sup>

6 <sup>1</sup> School of Artificial Intelligence, Optics, and Electronics (iOPEN), Northwestern  
7 Polytechnical University, Xi'an, China

8 <sup>2</sup> WHO Collaborating Center for Infectious Disease Epidemiology and Control, School of  
9 Public Health, LKS Faculty of Medicine, The University of Hong Kong, Hong Kong SAR,  
10 China

11 <sup>3</sup> Laboratory of Data Discovery for Health Limited, Hong Kong Science Park, Hong Kong  
12 SAR, China

13 <sup>4</sup> School of Cybersecurity, Northwestern Polytechnical University, Xi'an, China

14 \*Correspondence: [cgao@nwpu.edu.cn](mailto:cgao@nwpu.edu.cn)

### 15 **Abstract**

16 International air travel has been recognized as a crucial factor in the cross-regional  
17 transmission of monkeypox (now known as mpox) since this disease rapidly spread across  
18 the globe in May 2022. On September 6, 2022, Hong Kong SAR (HK) reported its first  
19 imported mpox case with travel history of the United States (US), Canada, and the  
20 Philippines. In this study, we estimated the importation risk to HK from 25 international  
21 departures from May 1 to September 6, 2022, based on the prevalence of pre-symptomatic  
22 mpox cases in the study regions, and time-varying flight mobility evaluated by aggregating  
23 multiple open-access air travel datasets (e.g., OpenSky, Aviation Edge). The result indicated  
24 that the US had the most significant importation risk of 0.63 (95% CI: 0.32, 0.95) during the  
25 study period, followed by the United Kingdom (UK) and Canada with a risk of 0.29 (95% CI:  
26 0.10, 0.63) and 0.17 (95% CI: 0.08, 0.32), respectively. Our study demonstrated that the  
27 importation risk of mpox from the US and Canada was substantially higher than other regions,  
28 which was aligned with the travel history of the first reported case in HK. Our study provided  
29 a simplified computational method for estimating the importation risk of mpox virus based on  
30 air travel mobility and disease prevalence. Estimating the international importation risk of  
31 mpox is essential for appropriately designing and timely adjusting emergency public health  
32 strategies and inbound measures.

33 **Keywords:** mpox, monkeypox, importation risk, prevalence, international air travel, Hong  
34 Kong

## 35 **Introduction**

36 Mpox (monkeypox) is a zoonotic disease rarely transmitted outside Africa before 2022  
37 (*Nature* 2022; S. Wang et al. 2022; Z. Du et al. 2022). On May 7, 2022, a confirmed case of  
38 mpox who traveled from Nigeria to the United Kingdom (UK) (“Monkeypox - United  
39 Kingdom of Great Britain and Northern Ireland” n.d.) was reported by the World Health  
40 Organization. After that, the rapid outbreak marked the first time that mpox spread widely in  
41 non-endemic countries, covering Europe, North America, and Oceania successively (“Multi-  
42 Country Monkeypox Outbreak in Non-Endemic Countries” n.d.). On July 23, 2022, World  
43 Health Organization declared the ongoing mpox outbreak as a Public Health Emergency of  
44 International Concern (PHEIC) (“WHO Director-General Declares the Ongoing Monkeypox  
45 Outbreak a Public Health Emergency of International Concern” n.d.). As of December 28,  
46 2022, 83,751 cases had been reported in 110 countries or regions, with 9 countries reporting  
47 a high cumulative number of cases ( $\geq 3000$ ), namely the US ( $n=29,554$ ), Brazil ( $n=10,493$ ),  
48 Spain ( $n=7,496$ ), France ( $n=4,114$ ), Colombia ( $n=4,021$ ), UK ( $n=3,730$ ), Germany ( $n=3,676$ ),  
49 Peru ( $n=3,643$ ), and Mexico ( $n=3,509$ ) (Mathieu et al. 2022).

50 International air travel plays an essential role in the transmission of mpox (Talbot 2022).  
51 Most confirmed cases were with travel history from European and North American countries  
52 rather than West or Central Africa (“Monkeypox Outbreak” n.d.; Angelo et al. 2019). The  
53 first imported mpox case in Hong Kong SAR (HK), whose recent stops included the US,  
54 Canada, and the Philippines, was documented on September 6, 2022 (*Reuters* 2022a). The  
55 Government of Hong Kong has procured a third-generation vaccine, “JYNNEOS,” which has  
56 been licensed by the U.S. Food and Drug Administration (FDA) to protect against mpox  
57 (“Centre for Health Protection, Department of Health - Monkeypox” n.d.). Although rapid  
58 responses were quickly initiated in non-endemic areas, including vaccination and surveillance  
59 of human-to-human transmission, travelers from high-risk regions may still pose a potential  
60 importation risk to the destinations due to the long incubation period (Thornhill et al. 2022).

61 Various mathematical models and research methods have been developed to estimate the risk  
62 of cross-regional transmission. Previous research has provided vital insight into infectious  
63 disease transmission by combining travel data with local disease outbreak data (Shi et al.  
64 2020; Kuo and Chiu 2021; Russell et al. 2021; Zhang et al. 2022). In the fight against  
65 COVID-19 outbreaks, the importation risk of COVID-19 (including the wildtype, 501Y, and  
66 Omicron sub-variants) is quantified based on the accessibility to the airline network and local  
67 disease situations to guide inbound control measures (Z. Du et al. 2021; Bai, Du, et al. 2022;  
68 Nakamura and Managi 2020; Z. Du et al. 2020; Bai, Xu, et al. 2022; Xu et al. 2022). The  
69 correlations between air travel and the international transmission of mpox have been clearly  
70 identified (Bhattacharya, Dhama, and Chakraborty 2022; M. Du et al. 2022; Kinoshita et al.  
71 2022). These studies highlighted the importance of appropriately estimating the importation  
72 risk among air passengers to effectively mitigate the cross-regional transmission of infectious  
73 disease (Menkir et al. 2021; Lai et al. 2022; Han et al. 2021).

74 As a major international transportation hub and a special economic zone of China, HK has  
75 been affected by the global spread of infectious diseases over the past decades (Z. Du, Tian,  
76 and Jin 2022; Z. Du et al. 2023). HK experienced the SARS outbreak in 2003 (Pine and  
77 McKercher 2004) as well as the Influenza A (H1N1) pandemic in 2009 (Liao et al. 2010),

78 and further fueled and accelerated the global transmission of these diseases (National  
79 Immunization Advisory Committee (NIAC) Technical Working Group (TWG), Influenza  
80 Vaccination TWG 2021). The volume of air traffic from overseas to Hong Kong has been  
81 gradually increasing following the reopening of HK on August 12, 2022 (“Government  
82 Announces Lifting of Compulsory Quarantine Requirement on Arrival at Hong Kong” n.d.),  
83 understanding and nowcasting the international importation risk of the mpox virus is critical  
84 for designing appropriate emergency public health strategies and inbound measures to reduce  
85 transmission risk. Our study aims to quantify the importation risk of mpox by combining  
86 aviation transportation data and prevalence in origin regions estimated during the early stage  
87 of the emergency public health outbreak, using HK as a case study. We estimated the daily  
88 volumes of air travel passengers from international regions to HK via open-access aviation  
89 datasets (e.g., OpenSky (Meides n.d.), Aviation Edge (“Aviation API List” 2017)) and the  
90 prevalence of mpox by country from Our World In Data (Mathieu et al. 2022). We further  
91 estimated the probability of importing at least one mpox case between May 1 and September  
92 6, 2022, before the date of the first mpox imported case. Our research included 25 regions  
93 covering four continents with the most reported cases and direct air connection to HK.

## 94 **Materials and Methods**

### 95 **Data Source**

96 To estimate the daily number of passengers traveling to HK, we aggregated the daily direct  
97 flights arriving (and landing) in HK by combining the results from the OpenSky (Meides n.d.)  
98 and Aviation Edge (“Aviation API List” 2017). The information for each airport and  
99 estimated passenger capacity per aircraft were obtained from OurAirports (“Open Data @  
100 OurAirports” n.d.) and the Admtl (Aéroports de Montréal 2021), respectively.

101 We retrieved monthly data for about 696 thousand air-travel passengers arriving or transiting  
102 in HK during the study period  $T$  (from May 1 to September 6, 2022) (“Tourism Statistics”  
103 n.d.). In total, we extracted 20,181 direct and transit flights from 46 distinct regions, with  
104 14,858 from OpenSky and 5,323 additional from Aviation Edge. Due to the lack of transit  
105 flight information, we assumed Hong Kong was the destination for every flight landing at  
106 Hong Kong International Airport. We obtained the 7-day smoothed daily reported cases of  
107 mpox of different countries and regions from Our World In Data (Mathieu et al. 2022) from  
108 May to September 2022.

### 109 **Estimating daily air-travel passengers from international regions to HK**

110 We first estimate the time-varying mobility via air travel following the methods used in ref.  
111 (Bai et al. 2022) and then calculate the prevalence of pre-symptomatic cases in a given area  
112 to estimate the likelihood of introductions. The notation and values of the parameters are  
113 provided in **Table 1**.

114 Given the lack of information regarding the actual composition of each flight, it was assumed  
115 that each flight was at full capacity. Used  $\Omega_o^a(t)$  is the daily volume of aircraft  $a$  from the  
116 international region  $o$  to HK and  $\delta_a$  is the maximum passenger capacity for aircraft  $a$  of all  
117 types of aircraft  $A$  (Aéroports de Montréal 2021). Thus, the approximated inbound  
118 passengers  $m_o(t)$  from  $o$  to HK on day  $t$  is given by:  $m_o(t) = \sum_{a, a \in A} \Omega_o^a(t) \times \delta_a$  Then, we  
119 validated the air traffic by defining the ascertainment rate of passenger volume  $\mathcal{I}_o(T)$  as the

120 ratio of actual and estimated passengers to adjust the probably overestimated air-travel  
121 passengers, given by:

$$122 \quad Y_o(T) = \frac{\delta_o(T)}{\sum_{t \in T} m_o(t)} \quad (1)$$

123 where  $\delta_o(T)$  stands for the actual passengers from the  $o$  during  $T$ . For those regions  
124 without the monthly visitor statistics to HK (“Tourism Statistics” n.d.), we matched  $m_o(t)$   
125 and the ascertainment rate  $Y_o(T)$  to estimate the daily inbound volume:  
126  $M_o(T) = Y_o(T) \times m_o(t)$ .

### 127 **Estimating pre-symptomatic prevalence of mpox**

128 We utilized 7-day smoothed mpox cases reported by region (Mathieu et al. 2022) to estimate  
129 the pre-symptomatic prevalence of mpox. Following the sub-exponential model (Chowell et  
130 al. 2016; Z. Du et al. 2022), we first estimated the confirmed case on day  $t$  during the early  
131 outbreak of epidemics by:

$$132 \quad I_o(t) = r[r(1-p)t + I_o(t_0)^{(1-p)}]^{(1/(1-p))} \quad (2)$$

133 where  $t_0$  indicates the date when the case was first detected in region  $o$  and  $I_o(t_0)$  the  
134 corresponding initial number,  $r$  and  $p$  are the growth rate and the deceleration of growth,  
135 respectively. We assume  $r$  and  $p$  follow the normal distributions and estimate their mean  
136 and standard variance based on the daily confirmed cases in the study region, using the  
137 Levenberg–Marquardt algorithm implemented in prior studies (Viboud, Simonsen, and  
138 Chowell 2016) to minimize the residual sum of squares (RSS) between the model output and  
139 the observed cases.

140 To calculate the total number of infected cases who had not yet developed symptoms  $\Phi_o(t)$ ,  
141 we back-shifted the time series of reported cases by incubation period  $D_i$ :

$$142 \quad \Phi_o(t) = \sum_{i=t-D_i}^{t-1} I_o(i) \quad (3)$$

143 Then, we divided the total cases by the population size  $N_o$  of the origin  $o$  to calculate the  
144 prevalence of pre-symptomatic cases, which is given by  $P_o(t) = \Phi_o(t) / N_o$ . For each  
145 simulation to yield the incidence in the region  $o$  during the study period, we independently  
146 simulate 1000 times to sample a pair of  $r$  and  $p$  from the normal distributions to introduce  
147 uncertainty.

### 148 **Estimating importation risk of mpox**

149 We assumed all the mpox cases (that had not developed symptoms among passengers who  
150 intended to travel to HK) would be able to board. To estimate the number of imported cases  
151 from each region, we combined air-passenger with the daily prevalence of mpox to yield the  
152 importation force of cases that have not developed symptoms. We assumed that the  
153 proportion of pre-symptomatic passengers departing from a region was the same as the  
154 overall prevalence of pre-symptomatic cases in that region. Thus, the imported cases from  
155 region  $o$  to HK on day  $t$ , is given by:

156 
$$\Gamma_o(t) = P_o(t) \times M_o(t) \quad (4)$$

157 Informed by the first case among inbound passengers reported in HK who might be infected  
158 in the US on September 6, 2022 (Reuters 2022a), we calibrated the cumulative number of  
159 imported cases from the US as 1 at the end of the study period. Based on the observed event  
160 by September 6, 2022, we normalized each origin region's cumulative imported cases, by  
161  $\hat{\Gamma}_o(t) = \Gamma_o(t) / \Gamma_{US}(t_n)$ , where  $\Gamma_{US}(t_n) = 1$  denotes the observed imported cases from the US  
162 on  $t_n$  (September 6, 2022).

163 Assuming that the imported cases of mpox from the study region  $o$  to HK are essentially a  
164 non-homogeneous poisson process (Wang and Wu 2018; Silverstein et al. 2020), we  
165 estimated the cumulative probability of at least one infected case (Z. Du et al. 2021; Bai et al.  
166 2022) being introduced from  $o$  to HK by  $t$  as:

167 
$$\Psi_o(t) = 1 - \exp\left[-\int_{i=t_0}^t \hat{\Gamma}_o(i) di\right] \quad (5)$$

## 168 Results

169 We estimated the time-varying flight mobility from a given country to HK with multiple  
170 open-access air travel datasets and the prevalence of pre-symptomatic cases in each study  
171 region. We synthesized these results to calculate the likelihood of at least one imported case  
172 occurring before September 6, 2022. Two indicators for the international importation risk of  
173 mpox to HK, namely the cumulative volume of imported cases and the cumulative  
174 probability of importing at least one case, were estimated by combining the aviation  
175 transportation data and the prevalence in origin regions. The estimated importation risk for the  
176 25 regions between May 1 and September 6, 2022 is shown in **Table 2**.

177 **Figure 1a** shows the estimated number of imported cases in HK by September 6, 2022. The  
178 x-axis designates the estimated cumulative imported cases. Among the 25 international  
179 regions included in this study, we estimated that the US imported the maximum cases at 1.0  
180 (95% CI: 0.39, 2.89), followed by UK at 0.35 (95% CI: 0.10, 0.99), Canada at 0.19 (95% CI:  
181 0.08, 0.38).

182 **Figure 1b** represents the curve of importation risk reflecting the cumulative probability of  
183 importing at least one mpox case among inbound travelers. Based on the observed sources of  
184 imported cases, only the US had a mean importation risk of 0.63 higher than 0.5 (95% CI:  
185 0.32, 0.95) as of September 6, 2022. The UK and Canada are the following, with 0.29 (0.10,  
186 0.63) and 0.17 (0.08, 0.32), respectively.

187 **Figure 2** displays the risk of importation of mpox for the study regions as of September 6,  
188 2022, where the closer the color to red indicates a higher risk of importation in that region.  
189 Our study found that the risk from the US and Canada was relatively higher, which is aligned  
190 with the fact that the first reported case in Hong Kong had stayed in both countries before  
191 arriving and may have been infected there.

## 192 Discussion

193 Human mobility patterns influence epidemiological risk (Gao and Liu 2013). The prevalence  
194 of a newly emerging infectious disease will most likely be determined by where it was first  
195 imported. In this study, we estimated the time-varying importation risk of mpox from 25  
196 international regions to HK. Informed by the estimated arrival number of passengers and the



197 local prevalence of mpox in each international origin, we developed a statistical method to  
198 estimate the cumulative risk of importation of mpox by combining actual imported events in  
199 HK. Our results were aligned with reality, and the estimates of imported cases reflected the  
200 connectivity of air travel and the prevalence of mpox in the corresponding origin countries  
201 and regions.

202 Our findings emphasize the importance of enhancing surveillance against mpox among  
203 travelers in regions with a high importation risk of mpox. The cumulative risk of importation  
204 of a region is highly correlated with the aggregated air travel flow to HK and the prevalence  
205 of mpox in that region. The ranking of importation risk indicated that the US had the highest  
206 risk during the entire study period. The number of mpox cases in the US surged from July to  
207 August (CDC 2022b), and the number of travelers from the US continuously increased  
208 during this period as the gradual relaxation of Hong Kong's border control ("Tourism  
209 Statistics" n.d.). Except for the US, where the imported cases have been observed, several  
210 non-endemic countries, including the UK, Canada, France, Germany, and the Netherlands,  
211 are also at relatively high risk of importation. A previous study based on the Risk Matrix  
212 Method (M. Du et al. 2022) drew a similar conclusion about the importation risk of mpox  
213 into China: The US had the highest importation risk of mpox and should be closely  
214 monitored. Globally, MSM (men who have sex with men) make up the majority of cases in  
215 the current outbreak (CDC 2022a). The mpox virus is typically transmitted by close, personal  
216 contact with groups who developed symptoms among healthcare workers, laboratory  
217 personnel, and people with "high-risk sexual practices" such as sex workers (Reuters 2022b).  
218 Although the probability of importing a case of mpox via international aviation is extremely  
219 low at the end of August, implementing surveillance and contact tracing for passengers with  
220 high-risk activities from specific areas would effectively contain the cross-regional spread of  
221 mpox.

222 Several assumptions and limitations should be discussed in our estimations. First, due to no  
223 access to the complete commercial aviation dataset, we postulated that air travels between  
224 regions are all directed, while the indirect travels should also be included in the air traffic  
225 volumes. This may cause the incorrect estimation of the passenger volumes to HK. We  
226 expect that combining complete passenger data with flight transit information would improve  
227 the accuracy of estimates of potential importation risks from international departures, but  
228 would not substantially change the analysis results. Second, our method for estimating mpox  
229 prevalence relies on the number of reported cases in the early phase of an outbreak. Given the  
230 varieties in monkeypox surveillance capacity in different regions and the delay between  
231 infection and case reporting ("Monkeypox 2022 Global Epidemiology; Report 2022-09-23"  
232 n.d.), the resulting undetected cases may lead to underestimate local pre-symptomatic  
233 prevalence. Third, we assumed that only infected cases who had not developed symptoms  
234 could board following prior studies (Z. Du et al. 2021). While in reality, some individuals  
235 with asymptomatic or mild infection may also be able to go aboard (De Baetselier et al. 2022).  
236 Obtaining data on the proportion of mild and asymptomatic infection in the real world would  
237 improve our estimates of mpox importation risk among air travelers. Fourth, our study only  
238 examined the importation risks posed by air travelers, hence the results cannot be  
239 extrapolated to other transportation routines (Menkir et al. 2021; Gao et al. 2022).

## 240 **Conclusions**

241 To conclude, our study provided a simplified computational method for estimating the mpox  
242 virus importation risk based on air travel mobility and disease prevalence. The approach can  
243 be adjusted to incorporate prevalence estimates and flight data from any origin and

244 destination locations requiring minimum data. Our findings emphasize the necessity for a  
245 more comprehensive understanding of the probable sources of case importation for predictive  
246 simulation and risk perception. Reliable estimates of international importation risk from an  
247 endemic or non-endemic area will benefit in accurately evaluating the potential need to  
248 curtail the cross-regional transmission of the mpox virus as well as the implementation of  
249 disease monitoring and preparedness.

## 250 **Data Availability**

251 The data underlying this article and these programs will be shared on reasonable request with  
252 the corresponding author (email to the corresponding author). The database of the air travel  
253 and mpox cases is publicly available at Crowdsourced air traffic data from The OpenSky  
254 Network 2020 | Zenodo, Aviation Edge - Database and API - Aviation database and API  
255 (aviation-edge.com), Mpox (monkeypox) - Our World in Data, respectively.

## 256 **Conflicts of Interest**

257 The authors declare that there is no conflict of interest regarding the publication of this article.

## 258 **Author Contributions**

259 MX, ZD, SS, ZS and YB: conceived the study, designed statistical and modeling methods,  
260 conducted analyses, and wrote the manuscript; CG, ZW: interpreted results and revised the  
261 manuscript.

## 262 **Funding Statement**

263 This work was supported by the Key Program for International Science and Technology  
264 Cooperation Projects of China [grant no. 2022YFE0112300], National Natural Science  
265 Foundation of China [grant nos. 61976181, 62261136549, U22B2036], Key Technology  
266 Research and Development Program of Science and Technology - Scientific and  
267 Technological Innovation Team of Shaanxi Province [grant no. 2020TD-013].

## 268 **Acknowledgments**

269

## 270 **Supplementary Materials**

271 There are no Supplementary Materials in this paper.

## 272 **References**

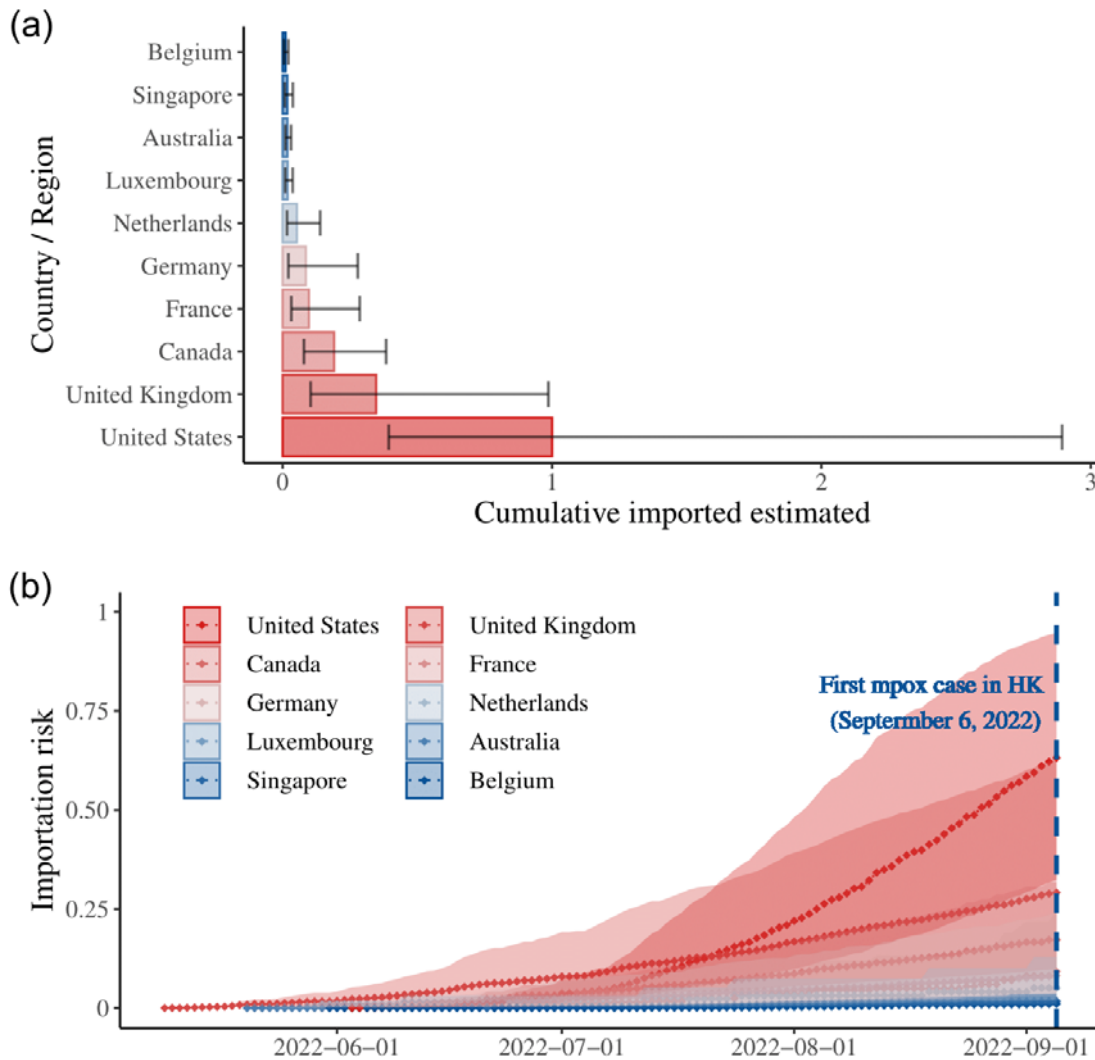
- 273 Aéroports de Montréal. 2021. "Reference Table – Number of Seats per Aircraft Type." Admtl. 2021.  
274 [https://www.admtl.com/sites/default/files/2021/2021\\_Appendix\\_6-Number-of-seats-per-aircraft-type.pdf](https://www.admtl.com/sites/default/files/2021/2021_Appendix_6-Number-of-seats-per-aircraft-type.pdf).  
275 Angelo, Kristina M., Brett W. Petersen, Davidson H. Hamer, Eli Schwartz, and Gary Brunette. 2019.  
276 "Monkeypox Transmission among International Travellers-Serious Monkey Business?" *Journal of Travel*  
277 *Medicine* 26 (5). <https://doi.org/10.1093/jtm/taz002>.  
278 "Aviation API List." 2017. Aviation Database and API. Aviation Edge. October 16, 2017. [https://aviation-](https://aviation-edge.com/aviation-api-list/)  
279 [edge.com/aviation-api-list/](https://aviation-edge.com/aviation-api-list/).

- 280 Bai, Yuan, Zhanwei Du, Mingda Xu, M. Sc, Lin Wang, Peng Wu, Eric H. Y. Lau, Benjamin J. Cowling, and  
281 Lauren Ancel Meyers. 2022. “International Risk of SARS-CoV-2 Omicron Variant Importations  
282 Originating in South Africa.” *Journal of Travel Medicine*, June. <https://doi.org/10.1093/jtm/taac073>.
- 283 Bai, Yuan, Mingda Xu, Caifen Liu, Mingwang Shen, Lin Wang, Linwei Tian, Suoyi Tan, et al. 2022. “Travel-  
284 Related Importation and Exportation Risks of SARS-CoV-2 Omicron Variant in 367 Prefectures (Cities)—  
285 China, 2022.” *China CDC Weekly* 4 (40): 885–89.
- 286 Bhattacharya, Manojit, Kuldeep Dhama, and Chiranjib Chakraborty. 2022. “Recently Spreading Human  
287 Monkeypox Virus Infection and Its Transmission during COVID-19 Pandemic Period: A Travelers’  
288 Prospective.” *Travel Medicine and Infectious Disease* 49 (June): 102398.
- 289 CDC. 2022a. “2022 Outbreak Cases and Data.” Centers for Disease Control and Prevention. November 21,  
290 2022. <https://www.cdc.gov/poxvirus/monkeypox/response/2022/index.html>.
- 291 ———. 2022b. “U.S. Mpox Case Trends Reported to CDC.” Centers for Disease Control and Prevention.  
292 December 14, 2022. <https://www.cdc.gov/poxvirus/monkeypox/response/2022/mpx-trends.html>.
- 293 “Centre for Health Protection, Department of Health - Monkeypox.” n.d. Accessed December 30, 2022.  
294 <https://www.chp.gov.hk/en/healthtopics/content/24/101721.html>.
- 295 Chowell, Gerardo, Cécile Viboud, Lone Simonsen, and Seyed M. Moghadas. 2016. “Characterizing the  
296 Reproduction Number of Epidemics with Early Subexponential Growth Dynamics.” *Journal of the Royal  
297 Society, Interface / the Royal Society* 13 (123): 20160659.
- 298 De Baetselier, Irith, Christophe Van Dijck, Chris Kenyon, Jasmine Coppens, Johan Michiels, Tessa de Block,  
299 Hilde Smet, et al. 2022. “Retrospective Detection of Asymptomatic Monkeypox Virus Infections among  
300 Male Sexual Health Clinic Attendees in Belgium.” *Nature Medicine*, August.  
301 <https://doi.org/10.1038/s41591-022-02004-w>.
- 302 Du, Min, Shi Mo Zhang, Wei Jing Shang, Wen Xin Yan, Qiao Liu, Chen Yuan Qin, Min Liu, and Jue Liu. 2022.  
303 “2022 Multiple-Country Monkeypox Outbreak and Its Importation Risk into China: An Assessment Based  
304 on the Risk Matrix Method.” *Biomedical and Environmental Sciences: BES* 35 (10): 878–87.
- 305 Du, Zhanwei, Zengyang Shao, Yuan Bai, Lin Wang, Jose L. Herrera-Diestra, Spencer J. Fox, Zeynep Ertem,  
306 Eric H. Y. Lau, and Benjamin J. Cowling. 2022. “Reproduction Number of Monkeypox in the Early Stage  
307 of the 2022 Multi-Country Outbreak.” *Journal of Travel Medicine* 29 (8).  
308 <https://doi.org/10.1093/jtm/taac099>.
- 309 Du, Zhanwei, Linwei Tian, and Dong-Yan Jin. 2022. “Understanding the Impact of Rapid Antigen Tests on  
310 SARS-CoV-2 Transmission in the Fifth Wave of COVID-19 in Hong Kong in Early 2022.” *Emerging  
311 Microbes & Infections* 11 (1): 1394–1401.
- 312 Du, Zhanwei, Lin Wang, Simon Cauchemez, Xiaoke Xu, Xianwen Wang, Benjamin J. Cowling, and Lauren  
313 Ancel Meyers. 2020. “Risk for Transportation of Coronavirus Disease from Wuhan to Other Cities in  
314 China.” *Emerging Infectious Diseases* 26 (5): 1049–52.
- 315 Du, Zhanwei, Lin Wang, Bingyi Yang, Sheikh Taslim Ali, Tim K. Tsang, Songwei Shan, Peng Wu, Eric H. Y.  
316 Lau, Benjamin J. Cowling, and Lauren Ancel Meyers. 2021. “Risk for International Importations of  
317 Variant SARS-CoV-2 Originating in the United Kingdom.” *Emerging Infectious Diseases* 27 (5): 1527.
- 318 Du, Zhanwei, Xiao Zhang, Lin Wang, Sidan Yao, Yuan Bai, Qi Tan, Xiaoke Xu, et al. 2023. “Characterizing  
319 Human Collective Behaviors During COVID-19—Hong Kong SAR, China, 2020.” *China CDC Weekly* 5  
320 (4): 71–75.
- 321 Gao, Chao, Yi Fan, Shihong Jiang, Yue Deng, Jiming Liu, and Xianghua Li. 2022. “Dynamic Robustness  
322 Analysis of a Two-Layer Rail Transit Network Model.” *IEEE Transactions on Intelligent Transportation  
323 Systems* 23 (7): 6509–24.
- 324 Gao, Chao, and Jiming Liu. 2013. “Modeling and Restraining Mobile Virus Propagation.” *IEEE Transactions  
325 on Mobile Computing* 12 (3): 529–41.
- 326 “Government Announces Lifting of Compulsory Quarantine Requirement on Arrival at Hong Kong.” n.d.  
327 Accessed January 1, 2023. <https://www.info.gov.hk/gia/general/202209/24/P2022092400048.htm>.
- 328 Han, Xiaoyi, Yilan Xu, Linlin Fan, Yi Huang, Minhong Xu, and Song Gao. 2021. “Quantifying COVID-19  
329 Importation Risk in a Dynamic Network of Domestic Cities and International Countries.” *Proceedings of  
330 the National Academy of Sciences of the United States of America* 118 (31).  
331 <https://doi.org/10.1073/pnas.2100201118>.
- 332 Kinoshita, Ryo, Miho Sassa, Shogo Otake, Fumi Yoshimatsu, Shoi Shi, Ryo Ueno, Motoi Suzuki, and Daisuke  
333 Yoneoka. 2022. “Impact of Airline Travel Network on the Global Importation Risk of Monkeypox, 2022.”  
334 *bioRxiv*. <https://doi.org/10.1101/2022.09.17.22280060>.
- 335 Kuo, Pei-Fen, and Chui-Sheng Chiu. 2021. “Airline Transportation and Arrival Time of International Disease  
336 Spread: A Case Study of Covid-19.” *PloS One* 16 (8): e0256398.
- 337 Lai, Shengjie, Isaac I. Bogoch, Nick W. Ruktanonchai, Alexander Watts, Xin Lu, Weizhong Yang, Hongjie Yu,  
338 Kamran Khan, and Andrew J. Tatem. 2022. “Assessing Spread Risk of COVID-19 within and beyond  
339 China in Early 2020.” *Data Science and Management* 5 (4): 212–18.

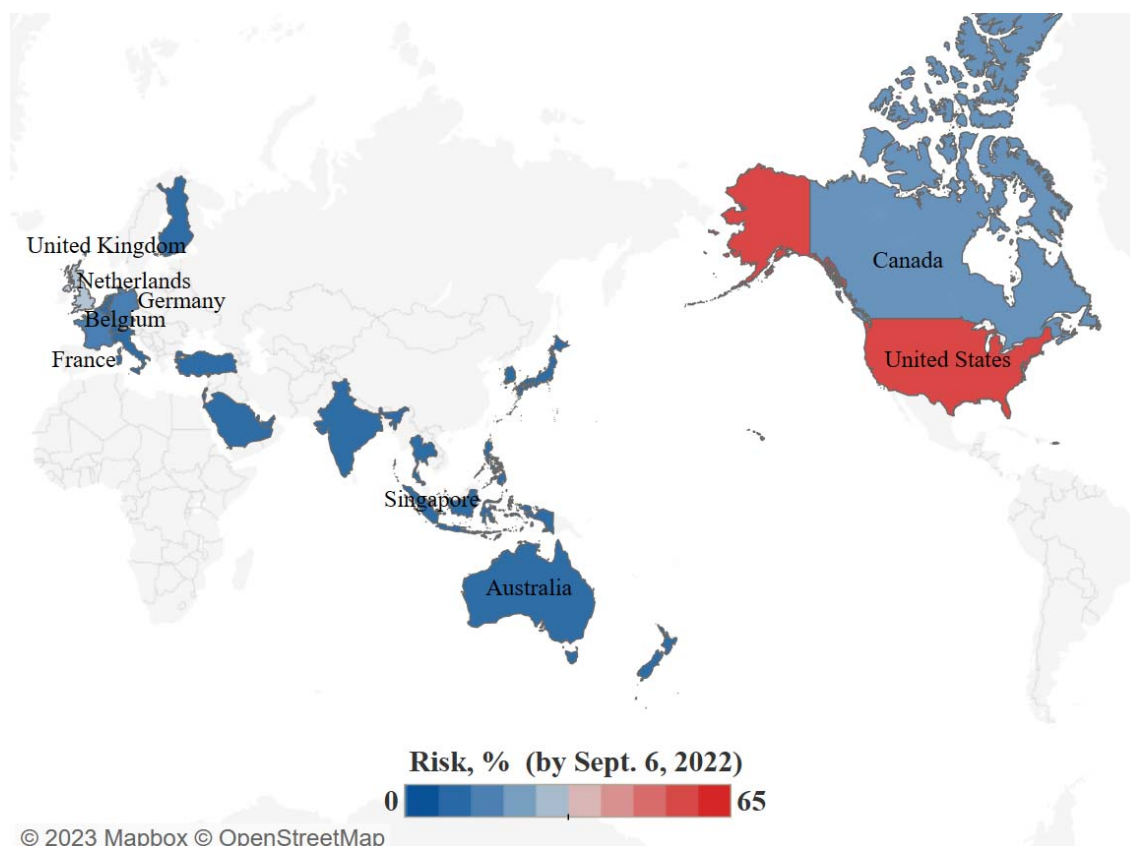


- 340 Liao, Qiuyan, Benjamin Cowling, Wing Tak Lam, Man Wai Ng, and Richard Fielding. 2010. "Situational  
341 Awareness and Health Protective Responses to Pandemic Influenza A (H1N1) in Hong Kong: A Cross-  
342 Sectional Study." *PloS One* 5 (10): e13350.
- 343 Mathieu, Edouard, Fiona Spooner, Saloni Dattani, Hannah Ritchie, and Max Roser. 2022. "Monkeypox." *Our*  
344 *World in Data*, May.  
345 [https://ourworldindata.org/monkeypox?utm\\_source=delta%20optimist&utm\\_campaign=delta%20optimist](https://ourworldindata.org/monkeypox?utm_source=delta%20optimist&utm_campaign=delta%20optimist%20outbound&utm_medium=referral)  
346 [%20outbound&utm\\_medium=referral](https://ourworldindata.org/monkeypox?utm_source=delta%20optimist&utm_campaign=delta%20optimist%20outbound&utm_medium=referral).
- 347 Meides, Marco. n.d. "The OpenSky Network - Free ADS-B and Mode S Data for Research." Accessed  
348 September 13, 2022. <https://opensky-network.org/>.
- 349 Menkir, Tigist F., Taylor Chin, James A. Hay, Erik D. Surface, Pablo M. De Salazar, Caroline O. Buckee,  
350 Alexander Watts, et al. 2021. "Estimating Internationally Imported Cases during the Early COVID-19  
351 Pandemic." *Nature Communications* 12 (1): 311.
- 352 "Monkeypox 2022 Global Epidemiology; Report 2022-09-23." n.d. Accessed January 31, 2023.  
353 <https://www.monkeypox.global.health/>.
- 354 "Monkeypox Outbreak." n.d. Accessed November 7, 2022.  
355 <https://www.who.int/emergencies/situations/monkeypox-oubreak-2022>.
- 356 "Monkeypox - United Kingdom of Great Britain and Northern Ireland." n.d. Accessed November 7, 2022.  
357 <https://www.who.int/emergencies/disease-outbreak-news/item/2022-DON381>.
- 358 "Multi-Country Monkeypox Outbreak in Non-Endemic Countries." n.d. Accessed November 27, 2022.  
359 <https://www.who.int/emergencies/disease-outbreak-news/item/2022-DON385>.
- 360 Nakamura, Hiroki, and Shunsuke Managi. 2020. "Airport Risk of Importation and Exportation of the COVID-  
361 19 Pandemic." *Transport Policy* 96 (September): 40–47.
- 362 National Immunization Advisory Committee (NIAC) Technical Working Group (TWG), Influenza Vaccination  
363 TWG. 2021. "[Technical guidelines for seasonal influenza vaccination in China (2021-2022)]." *Zhonghua*  
364 *liu xing bing xue za zhi = Zhonghua liuxingbingxue zazhi* 42 (10): 1722–49.
- 365 *Nature*. 2022. "Monkeypox: Wealthy Countries Must Avoid Their COVID-19 Mistakes."  
366 "Open Data @ OurAirports." n.d. Accessed September 13, 2022. <https://ourairports.com/data/>.
- 367 Pine, Ray, and Bob Mc Kercher. 2004. "The Impact of SARS on Hong Kong's Tourism Industry." *International*  
368 *Journal of Contemporary Hospitality Management* 16 (2): 139–43.
- 369 *Reuters*. 2022a. "Hong Kong Discovers First Case of Monkeypox," September 6, 2022.  
370 <https://www.reuters.com/world/asia-pacific/hong-kong-discovers-first-case-monkeypox-2022-09-06/>.
- 371 ———. 2022b. "Hong Kong to Start Monkeypox Vaccination on October 5," September 21, 2022.  
372 [https://www.reuters.com/world/asia-pacific/hong-kong-start-monkeypox-vaccination-october-5-2022-09-](https://www.reuters.com/world/asia-pacific/hong-kong-start-monkeypox-vaccination-october-5-2022-09-21/)  
373 [21/](https://www.reuters.com/world/asia-pacific/hong-kong-start-monkeypox-vaccination-october-5-2022-09-21/).
- 374 Russell, Timothy W., Joseph T. Wu, Sam Clifford, W. John Edmunds, Adam J. Kucharski, Mark Jit, and Centre  
375 for the Mathematical Modelling of Infectious Diseases COVID-19 working group. 2021. "Effect of  
376 Internationally Imported Cases on Internal Spread of COVID-19: A Mathematical Modelling Study." *The*  
377 *Lancet. Public Health* 6 (1): e12–20.
- 378 Shi, Shoi, Shiori Tanaka, Ryo Ueno, Stuart Gilmour, Yuta Tanoue, Takayuki Kawashima, Shuhei Nomura,  
379 Akifumi Eguchi, Hiroaki Miyata, and Daisuke Yoneoka. 2020. "Travel Restrictions and SARS-CoV-2  
380 Transmission: An Effective Distance Approach to Estimate Impact." *Bulletin of the World Health*  
381 *Organization* 98 (8): 518–29.
- 382 Silverstein, W. K., L. Stroud, G. E. Cleghorn, and J. A. Leis. 2020. "Wu JT, Leung K, Leung GM. Nowcasting  
383 and Forecasting the Potential Domestic and International Spread of the 2019-nCoV Outbreak Originating  
384 in Wuhan, China: A Modelling Study. *Lancet* 2020; 395: 689–97—In This Article." *The Lancet* 395: 689–  
385 97.
- 386 Talbot, François. 2022. "The Impact of COVID-19 on Airports—and the Path to Recovery." *ACI World* (blog).  
387 October 6, 2022. <https://aci.aero/2022/10/06/the-impact-of-covid-19-on-airports-and-the-path-to-recovery/>.
- 388 Thornhill, John P., Sapha Barkati, Sharon Walmsley, Juergen Rockstroh, Andrea Antinori, Luke B. Harrison,  
389 Romain Palich, et al. 2022. "Monkeypox Virus Infection in Humans across 16 Countries - April-June  
390 2022." *The New England Journal of Medicine* 387 (8): 679–91.
- 391 "Tourism Statistics." n.d. Discover Hong Kong. Accessed October 31, 2022.  
392 <https://www.discoverhongkong.com/eng/hktb/newsroom/tourism-statistics.html>.
- 393 Viboud, Cécile, Lone Simonsen, and Gerardo Chowell. 2016. "A Generalized-Growth Model to Characterize  
394 the Early Ascending Phase of Infectious Disease Outbreaks." *Epidemics* 15 (June): 27–37.
- 395 Wang, Lin, and Joseph T. Wu. 2018. "Characterizing the Dynamics Underlying Global Spread of Epidemics."  
396 *Nature Communications* 9 (1): 218.
- 397 Wang, Shuqi, Fengdi Zhang, Zhilu Yuan, Mingda Xu, Zhen Wang, Chao Gao, Renzhong Guo, and Zhanwei Du.  
398 2022. "Serial Intervals and Incubation Periods of the Monkeypox Virus Clades." *Journal of Travel*  
399 *Medicine* 29 (8): taac105.

- 400 “WHO Director-General Declares the Ongoing Monkeypox Outbreak a Public Health Emergency of  
401 International Concern.” n.d. Accessed November 7, 2022. [https://www.who.int/europe/news/item/23-07-](https://www.who.int/europe/news/item/23-07-2022-who-director-general-declares-the-ongoing-monkeypox-outbreak-a-public-health-event-of-international-concern)  
402 [2022-who-director-general-declares-the-ongoing-monkeypox-outbreak-a-public-health-event-of-](https://www.who.int/europe/news/item/23-07-2022-who-director-general-declares-the-ongoing-monkeypox-outbreak-a-public-health-event-of-international-concern)  
403 [international-concern](https://www.who.int/europe/news/item/23-07-2022-who-director-general-declares-the-ongoing-monkeypox-outbreak-a-public-health-event-of-international-concern).
- 404 “World Population Prospects - Population Division - United Nations.” n.d. Accessed September 15, 2022.  
405 <https://population.un.org/wpp/Download/Standard/CSV/>.
- 406 Xu, Mingda, Zhanwei Du, Songwei Shan, Xiaoke Xu, Yuan Bai, Peng Wu, Eric H. Y. Lau, and Benjamin J.  
407 Cowling. 2022. “RiskEstim: A Software Package to Quantify COVID-19 Importation Risk.” *Frontiers of*  
408 *Physics* 10. <https://doi.org/10.3389/fphy.2022.835992>.
- 409 Zhang, Lei, Lu Zhang, Li Lai, Zhanwei Du, Yuling Huang, Jianming Su, Canglang Wu, Shujuan Yang, and  
410 Peng Jia. 2022. “Risk Assessment of Imported COVID-19 in China: A Modelling Study in Sichuan  
411 Province.” *Transboundary and Emerging Diseases*, September. <https://doi.org/10.1111/tbed.14700>.  
412 .



413  
 414 **Figure 1: Estimated risk of mpox introductions from international regions to HK via 1000 stochastic**  
 415 **simulations from May 1 to September 6, 2022.** (a) As of September 6, 2022, the estimated number of  
 416 imported cases arrived in Hong Kong based on OpenSky data and Aviation API database. The barplot denotes  
 417 the estimated imported cases from the top 10 regions during the study period, with 95% CI; (b) The probability  
 418 that at least one person infected with mpox to HK by the date indicated on the x-axis, the color of line  
 419 corresponds to the estimated risk of each origin location as of September 6, 2022, with red and blue denoting  
 420 high and low probability, respectively.



421

© 2023 Mapbox © OpenStreetMap

422

**Figure 2:** Risk map of cumulative probability of at least one mpxv case imported from international regions by

423

September 6, 2022 in 1000 stochastic simulations. Regions in red to blue indicate high and low risk. Regions in

424

grey were not analyzed because mobility data were unavailable or no reported cases of mpxv.

425 **Table 1: Model Parameters and Data Sources.**

| Symbol          | Description  | Values                                  | Source (Reference)  |
|-----------------|--|---|---|
| $\Omega_o^a(t)$ | Number of landed flights of type $a$ from region $o$ to HK at time $t$               | Daily inbound flights                   | Ref. (Meides n.d.)  |
| $\delta_a$      | Max passenger capacity of aircraft $a$   | Capacity of each aircraft               | Ref. (Aéroports de Montréal 2021)   |
| $\delta_o(T)$   | Number of HK daily inbound passengers during study period $T$                        | Monthly inbound passengers              | Ref. (“Tourism Statistics” n.d.)  |
| $\gamma_o(T)$   | Ascertainment rate of air traffic of region $o$                                      | Scaling factor                          | Estimated   |
| $M_o(t)$        | Volume of estimated air passengers from region $o$ to HK at time $t$                 | Daily air passengers                    | Estimated   |
| $N_o$           | Population size of region $o$  | 2021 population estimates               | Ref. (“World Population Prospects - Population Division - United Nations” n.d.) |
| $I_o(t)$        | The number of new reported cases per person in the general population per unit time. | Incidence                               | Estimated   |
| $P_o(t)$        | The prevalence of pre-symptomatic mpox cases   | Prevalence (rate)                       | Estimated   |
| $D_i$           | The time period between infection and symptoms onset                                 | Incubation period 7 days (range: 3, 20) | Ref. (Thornhill et al. 2022)  |



|               |   |                                    |           |
|---------------|---|------------------------------------|-----------|
| $\Gamma_o(t)$ | Importation force from the region/country $o$ at time $t$   | Estimated volume of imported cases | Estimated |
| $\Psi_o(t)$   | The cumulative probability of imported at least one infection from the region $o$ during study period $T$ | Estimated importation risk         | Estimated |

426 **Table 2: Importation risk estimated during the study period.** We estimated the cumulative risk of  
 427 importation (95% CI) from 25 regions as of September 6, 2022. The region's name in bold denotes the first case  
 428 detected in HK who arrived from the Philippines after traveling in the US and Canada.

| Location             | Importation Risk (95% CI)  |
|----------------------|----------------------------|
| <b>United States</b> | 0.63212 (0.32408, 0.94727) |
| United Kingdom       | 0.29169 (0.09799, 0.62705) |
| <b>Canada</b>        | 0.17269 (0.07545, 0.31758) |
| France               | 0.09210 (0.03152, 0.24752) |
| Germany              | 0.08175 (0.02088, 0.24205) |
| Netherlands          | 0.05098 (0.01608, 0.12905) |
| Luxembourg           | 0.01815 (0.00942, 0.03613) |
| Australia            | 0.01730 (0.01035, 0.03053) |
| Singapore            | 0.01702 (0.00772, 0.03668) |
| Belgium              | 0.01045 (0.00481, 0.02068) |
| Switzerland          | 0.00504 (0.00282, 0.00856) |
| Israel               | 0.00446 (0.00254, 0.00761) |
| Italy                | 0.00323 (0.00141, 0.00732) |
| Qatar                | 0.00240 (0.00125, 0.00438) |
| New Zealand          | 0.00114 (0.00061, 0.00214) |
| United Arab Emirates | 0.00096 (0.00012, 0.00362) |
| Thailand             | 0.00063 (0.00041, 0.00097) |
| Finland              | 0.00038 (0.00013, 0.00115) |
| <b>Philippines</b>   | 0.00011 (0.00004, 0.00019) |
| Japan                | 0.00010 (0.00006, 0.00020) |
| South Korea          | 0.00009 (0.00002, 0.00019) |
| Saudi Arabia         | 0.00007 (0.00005, 0.00010) |
| India                | 0.00003 (0.00002, 0.00006) |
| Turkey               | 0.00001 (0.00001, 0.00002) |
| Indonesia            | 0.00001 (0.00000, 0.00001) |

429