

Cost-utility and value of information analysis of oxygenation thresholds for invasive ventilation in hypoxemic respiratory failure

Yarnell, Christopher J MD; ORCID 0000-0001-5657-9398

Barrett, Kali

Heath, Anna

Herridge, Margaret

Fowler, Rob

Sung, Lillian

Naimark, David

Tomlinson, George

2023-03-02

Contents

1	CHEERS checklist	4
2	Parameters for invasive ventilation and survival.....	8
2.1	Table e1 – Probabilities of survival and invasive ventilation by oxygenation threshold for invasive ventilation, AmsterdamUMCdb cohort.....	9
3	Parameter value tables	10
3.1	Table 1a – Probabilities of survival and invasive ventilation by oxygenation threshold for invasive ventilation	10
3.2	Table 1b – Costs during hospitalization	10
3.3	Table 1c: Additional parameters.....	11
4	Additional parameter details	12
4.1	Cost of daily care in ICU, ventilated and non-ventilated	12
4.2	Determining costs in the first 5 years post ICU.....	13
4.3	Incidence of eligible patients per year in Canada	15
4.4	Probability of long-term disability in patients ventilated for less than 7 days	15
4.5	Table e3 – coefficients for Gompertz lifespan distribution	Error! Bookmark not defined.
5	Bayesian modelling of ventilator, oxygen therapy, and ward duration	16
5.1	Rationale	16
5.2	Modeling	16
5.3	Table e4 – coefficients derived from Bayesian accelerated failure time modeling.....	17
6	Sensitivity analysis results.....	18
6.1	Table e4: Model outputs, sensitivity analysis	18
6.2	Figure e1: Cost-effectiveness acceptability curve, sensitivity analysis.....	19

7 References20

1 CHEERS checklist

Topic	No. Item	Location where item is reported
Title		
	1 Identify the study as an economic evaluation and specify the interventions being compared.	Title, Abstract, Methods
Abstract		
	2 Provide a structured summary that highlights context, key methods, results, and alternative analyses.	Abstract (page 4)
Introduction		
Background and objectives	3 Give the context for the study, the study question, and its practical relevance for decision making in policy or practice.	Introduction
Methods		
Health economic analysis plan	4 Indicate whether a health economic analysis plan was developed and where available.	Methods
Study population	5 Describe characteristics of the study population (such as age range, demographics, socioeconomic, or clinical characteristics).	Methods
Setting and location	6 Provide relevant contextual information that may influence findings.	Methods, Paragraphs 3 & 4
Comparators	7 Describe the interventions or strategies being compared and why chosen.	Methods, paragraphs 3 & 4

Topic	No.	Item	Location where item is reported
Perspective	8	State the perspective(s) adopted by the study and why chosen.	Methods, paragraph 1
Time horizon	9	State the time horizon for the study and why appropriate.	Methods, paragraph 1
Discount rate	10	Report the discount rate(s) and reason chosen.	Methods, paragraph 1
Selection of outcomes	11	Describe what outcomes were used as the measure(s) of benefit(s) and harm(s).	Methods, "Model structure and outputs" paragraph 2
Measurement of outcomes	12	Describe how outcomes used to capture benefit(s) and harm(s) were measured.	Methods, "Model structure and outputs" paragraph 2
Valuation of outcomes	13	Describe the population and methods used to measure and value outcomes.	Methods, "Model structure and outputs" paragraph 2
Measurement and valuation of resources and costs	14	Describe how costs were valued.	Methods, "Model structure and outputs" paragraph 2
Currency, price date, and conversion	15	Report the dates of the estimated resource quantities and unit costs, plus the currency and year of conversion.	Methods, "Model structure and outputs" paragraph 2, and Supplement, section 3.2
Rationale and description of model	16	If modelling is used, describe in detail and why used. Report if the model is publicly available and where it can be accessed.	Methods, first paragraph, and "Model structure and outputs", and Figure 1

Topic	No.	Item	Location where item is reported
Analytics and assumptions	17	Describe any methods for analysing or statistically transforming data, any extrapolation methods, and approaches for validating any model used.	Methods , Last paragraph and Supplement
Characterising heterogeneity	18	Describe any methods used for estimating how the results of the study vary for subgroups.	None used
Characterising distributional effects	19	Describe how impacts are distributed across different individuals or adjustments made to reflect priority populations.	Not incorporated
Characterising uncertainty	20	Describe methods to characterise any sources of uncertainty in the analysis.	Methods, “Model structure and outputs”
Approach to engagement with patients and others affected by the study	21	Describe any approaches to engage patients or service recipients, the general public, communities, or stakeholders (such as clinicians or payers) in the design of the study.	Not done
Results			
Study parameters	22	Report all analytic inputs (such as values, ranges, references) including uncertainty or distributional assumptions.	Supplementary tables e1, e2, e3, e4
Summary of main results	23	Report the mean values for the main categories of costs and outcomes of interest and summarise them in the most appropriate overall measure.	Results

Topic	No.	Item	Location where item is reported
Effect of uncertainty	24	Describe how uncertainty about analytic judgments, inputs, or projections affect findings. Report the effect of choice of discount rate and time horizon, if applicable.	Results
Effect of engagement with patients and others affected by the study	25	Report on any difference patient/service recipient, general public, community, or stakeholder involvement made to the approach or findings of the study	Not reported
Discussion			
Study findings, limitations, generalisability, and current knowledge	26	Report key findings, limitations, ethical or equity considerations not captured, and how these could affect patients, policy, or practice.	Discussion
Other relevant information			
Source of funding	27	Describe how the study was funded and any role of the funder in the identification, design, conduct, and reporting of the analysis	End of manuscript
Conflicts of interest	28	Report authors conflicts of interest according to journal or International Committee of Medical Journal Editors requirements.	End of manuscript

From: Husereau D, Drummond M, Augustovski F, et al. Consolidated Health Economic Evaluation Reporting Standards 2022 (CHEERS 2022) Explanation and Elaboration: A Report of the ISPOR CHEERS II Good Practices Task Force. Value Health 2022;25. [doi:10.1016/j.jval.2021.10.008](https://doi.org/10.1016/j.jval.2021.10.008)

2 Parameters for invasive ventilation and survival

The parameters for invasive ventilation and survival according to threshold were drawn from a target trial emulation of oxygenation thresholds for invasive ventilation conducted in two cohorts.(1)

The primary cohort studied in this target trial was drawn from the Medical Information Mart for Intensive Care (MIMIC) version IV database.(2,3) This database uses information from patients cared for in intensive care units at the Beth Israel Deaconess Medical Center in Boston, USA between 2009 and 2019. In the primary analysis from this target trial emulation, including 3,357 patients, the threshold $SF < 110$ was associated with the best 28-day survival.

The sensitivity analysis uses parameters from the secondary analysis in this target trial emulation, which were derived from the AmsterdamUMCdb database.(4,5) This database is based on patients cared for at the Amsterdam University Medical Centre in Amsterdam, Netherlands, between 2003 and 2016. In the secondary analysis from this target trial emulation, including 1,279 patients, the threshold $SF < 88$ was associated with the best 28-day survival.

The risk of mortality was overall lower in the cohort of non-intubated patients from Amsterdam. The final conclusion of the study was that for patients at higher baseline risk of mortality, such as those in the MIMIC-IV cohort of non-intubated patients, choosing lower hypoxemia severity thresholds would lead to higher 28-day survival, while for patients at lower baseline risk of mortality, such as those in the AmsterdamUMCdb cohort of non-intubated patients, choosing higher hypoxemia severity thresholds would lead to higher 28-day survival.

2.1 Table e1 – Probabilities of survival and invasive ventilation by oxygenation threshold for invasive ventilation, AmsterdamUMCdb cohort

Threshold	Survival (28 day)	Invasive ventilation (28-day)	
		Survivors	Deceased
Usual care	0.86	0.44	0.57
SF < 110	0.85	0.49	0.64
SF < 98	0.87	0.26	0.36
SF < 88	0.87	0.18	0.24

Table caption: This table shows the probability of 28-day clinical events by threshold, based on the target trial emulation by Yarnell et al 2022.(6) All parameters were implemented in the model as beta distributions with the above mean and a standard deviation of 0.1, using the alternative parameterization (mean and standard deviation) of the beta distribution.

3 Parameter value tables

3.1 Table e2 – Probabilities of survival and invasive ventilation by oxygenation threshold for invasive ventilation

Threshold	Hospital survival	Invasive ventilation	
		Survivors	Deceased
Usual care	0.75	0.34	0.25
SF < 110	0.78	0.74	0.64
SF < 98	0.76	0.49	0.40
SF < 88	0.74	0.21	0.16

Table caption: This table shows the probability of clinical events by threshold, based on the target trial emulation by Yarnell et al 2022.(1)

3.2 Table e3 – Costs during hospitalization

Day	ICU, on invasive ventilation	ICU, not on invasive ventilation	Ward (after ICU discharge)
1	6415	4009	2264
2	4567	2855	1883
3	4140	2588	1924
4	4037	2523	1751
5+	3925	2453	1533

Table caption: This table shows the mean cost (in 2022 Canadian dollars) of each successive day of care in an ICU on invasive ventilation, in an ICU not on invasive ventilation, or on the ward after ICU discharge, based on Evans et. al 2018 and Kaier et al.(7,8) Costs were adjusted to 2022 Canadian dollars by first converting to Canadian dollars at the currency conversion rate based on the time of costing data in the study (if costs were not in Canadian dollars), and then adjusting for inflation using the Canadian Consumer Price Index.(9)

3.3 Table e4: Additional parameters

Type	Name	Distribution	Detail	Values	Source
Probability	Long-term disability	Beta	IMV duration < 7	mean = 0.05, sd = 0.1	Expert opinion
		Beta	IMV duration ≥ 7 AND LOS < 14 AND age < 42	mean = 0.15, sd = 0.15	Herridge 2016
		Beta	(IMV duration ≥ 7) AND [(LOS < 14 AND age ≥ 42) OR (LOS ≥ 14 AND age < 45)]	mean = 0.25, sd = 0.2	Herridge 2016
		Beta	IMV duration ≥ 7 AND LOS ≥ 14 AND age 45-66	mean = 0.40, sd = 0.2	Herridge 2016
		Beta	Duration of IMV ≥ 7 AND LOS ≥14 AND age ≥ 66	mean = 0.60, sd = 0.2	Herridge 2016
Costs	Recovery after hospital discharge	Gamma	Year 1	mean = 29,595, sd = 7,746	Herridge 2016
		Gamma	Year 2	mean = 13,113, sd = 5,121	Herridge 2016
		Gamma	Year 3	mean = 8,043, sd = 4,011	Herridge 2016
		Gamma	Year 4	mean = 7,627, sd = 3906	Herridge 2016
		Gamma	Year 5	mean = 7,384, sd = 3843	Herridge 2016
		Mean – Normal Individual - Gamma	Year 6+, age 18-64	Mean – mean = 3469, sd = 1000 Individual – mean from above, sd = 2000	Wodchis 2016
		Mean – Normal Individual - Gamma	Year 6+, age 65+	Mean – mean = 29911, sd = 5000 Individual – mean from above, sd = 5000	Wodchis 2016
Utility	Recovery	Deterministic		Varies by age and sex	Guertin 2018
	Long-term disability penalty	PERT	annual penalty	mean = 0.15, min = 0.05, max = 0.4	Cuthbertson 2010
Lifespan	Death from recovered state	Weibull		Shape: mean = 0.4602, sd = 0.0376 Scale: mean = 16.711, sd = 3.8	Life tables 2020
	Hazard ratio for age ≥ 64	Log-normal		Mean = log(2.09), sd = 0.3	Cuthbertson 2010
Covariates	Age	Normal		mean = 65, sd = 15	MIMIC-IV
	Sex	Beta	Proportion female	mean = 0.45, sd = 0.05	MIMIC-IV
Discount	Annual	Deterministic		1.50%	CADTH

Table caption: This table shows the remaining parameters not contained in Tables 1a and 1b, divided by type (left column). IMV = invasive mechanical

ventilation, LOS = intensive care unit length of stay, sd = standard deviation, PERT = convex probability distribution parameterized by mean, minimum, and

maximum, MIMIC-IV = Medical Information Mart for Intensive Care version IV, CADTH = Canadian Agency for Drugs and Technology in Health

4 Additional parameter details

Here we include additional information on relevant parameters.

4.1 Cost of daily care in ICU, ventilated and non-ventilated

We combined multiple sources to estimate the average cost of a day in ICU while ventilated and the average cost of a day in ICU while not ventilated. Prior work from the Netherlands in 2006 suggested an incremental cost of invasive ventilation that converts to 3,539\$, in 2022 CAD.⁽¹⁰⁾ However, this is likely high, given that a Canadian Institutes of Health Information report from 2016 reported the average cost of a day in the intensive care unit was 4,301\$ in 2022 CAD.⁽¹¹⁾ The costing data most applicable to this study comes from a 2018 study out of Ottawa, Canada, that broke down ICU costs into fixed and variable components for each of days 1, 2, 3, 4, and 5+ of ICU admission. The variable portion of the daily ICU costs was approximately 85% of the total cost, with fixed costs making up the remaining 50%. This study also included the costs of a hospital ward stay (days 1, 2, 3, 4, 5+) after ICU discharge. Unfortunately, the Ottawa study did not have a breakdown of costs according to whether or not a patient was receiving invasive ventilation (we contacted the author who confirmed this).

We used information from other studies to estimate the differential cost between a ventilated and non-ventilated day in ICU. A German study using data from 2013 found that the daily costs for ventilated patients were 60% higher than costs for non-ventilated patients.⁽⁸⁾ An American study from the early 2000s found a similar relative difference.⁽¹²⁾ Given that care of a non-ventilated ICU patient with respiratory failure is more similar to care of a ward patient (most likely high-flow nasal cannula use, less likely non-invasive ventilation use) than a ventilated ICU patient, we set the cost of a day in ICU on non-invasive oxygen therapy to be 5/8 of the cost of the full estimated cost of a day in ICU from the Ottawa study.

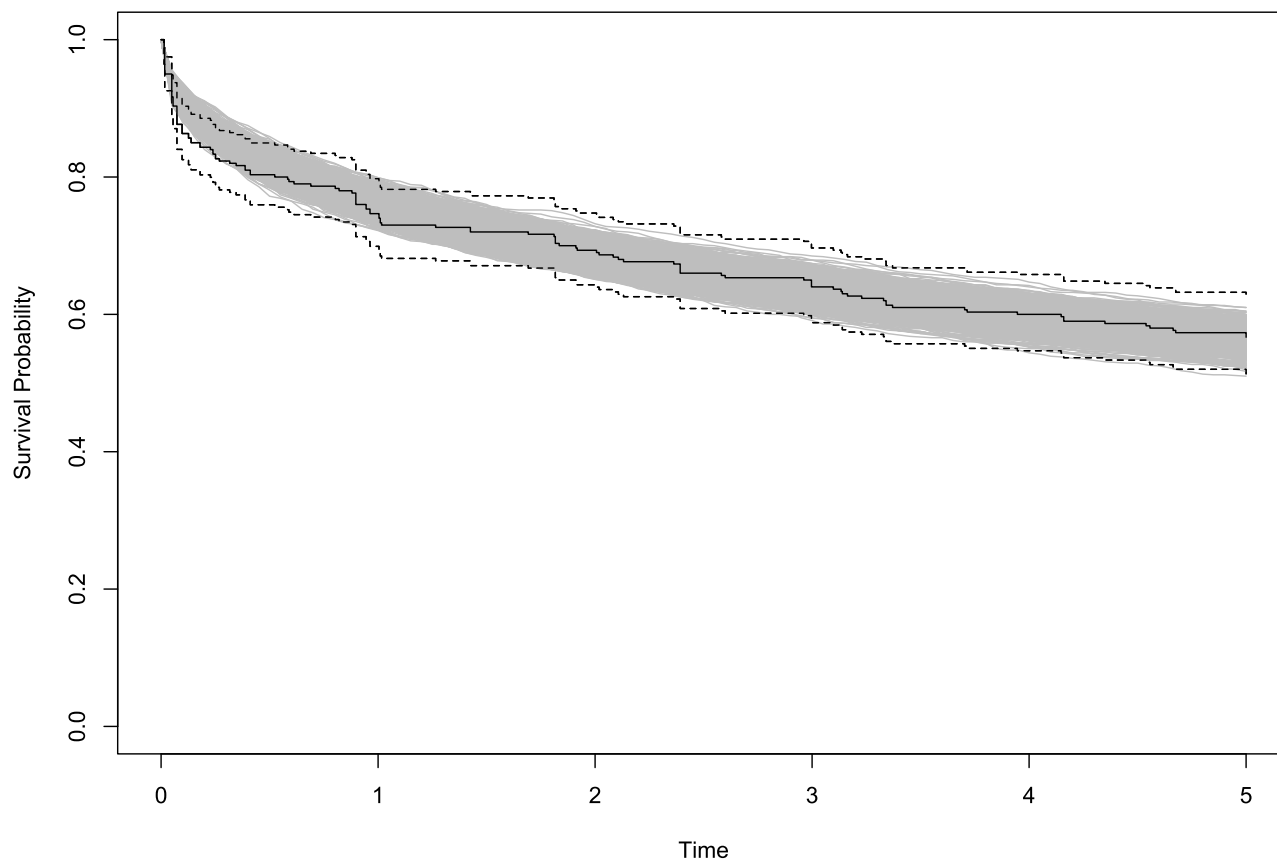
We also assumed that the average costs on day 1 would be higher than the average costs on day 2 and so on, similar to prior research. Out of concern that enforcing the order of average costs would unduly suppress the variance, we doubled the standard deviation of the cost of the first day of invasive ventilation relative to the standard deviation used for all other daily costs.

4.2 Life expectancy among survivors

ICU survivors face increased risk of death up to at least 5 years after hospital discharge compared to the general population.(13–21) In Cuthbertson et al (2010), they enrolled 300 consecutive consenting patients discharged from a mixed medical/surgical ICU in the United Kingdom. The ICU mortality rate at that time was 24%. The survivors had a median age of 61 years. Compared to an age- and sex-matched UK survival curve, the ICU survivor cohort had decreased survival at months 12 (74% vs 98%), 24 (69% vs 96%), and 60 (57% vs 90%) (extracted from Kaplan Meier curves).(22) This suggests an increased hazard of mortality for ICU survivors that remains elevated for at least 5 years, with the highest hazard occurring in the first 12 months and the hazard decreasing in time after. Factors associated with mortality included age, duration of ICU stay, APACHE II score, and premorbid physical and mental functioning.

We digitally extracted the data from the curve of Cuthbertson et al.(22) We fit a Weibull model to this curve. The shape parameter was 0.4602 (95% confidence interval 0.3922 to 0.5401, standard error 0.0376), and the scale parameter was 16.711 (95% confidence interval 10.7 to 26.1, standard error 3.8, using a time unit of years). Figure e1 shows that the Weibull curve does a reasonable job of describing the time-varying hazard. In our model, we also used the hazard ratio for age less than 64 derived by Cuthbertson, assuming that 50% of patients had an age less than 64. Note that we capped life expectancy for all patients at 100 years of total life duration.

4.3 Figure e1: Model for post-discharge survival



Caption: This figure shows the survival curve from Cuthbertson 2010 (13) in black (dotted lines indicate 95% confidence intervals) with simulated survival curves, from the parametric Weibull model fit, in grey. The overlap shows that the Weibull model achieves a reasonable fit to the digitally extracted data.

4.4 Determining costs in the first 5 years post ICU

We combined two sources to estimate the average cost of each year of life following ICU discharge. First, we used the work of Herridge et al (23) from 2016 that calculated the annual costs of health care for a cohort of critical illness survivors who had received at least 7 days of invasive ventilation. We drew a gamma-distributed random variable for each year with means corresponding to the observed value in Herridge et al's cohort. Second, we used the data from Wodchis et al's population study of the annual costs of healthcare in Canada, which divided average costs into the costs

for those from 18 to 64 years of age, and the costs for those aged 65 years and older.(24) We drew a normally distributed random variable for both age groups using the 90th percentile value observed in Wodchis et al's work to determine the mean, and then for each individual patient drew a gamma distributed random variable based on that mean and a fixed standard deviation. For survivors who were within 5 years of discharge and were invasively ventilated for at least 7 days, we took the higher of the two cost values. For all other patients, we used the Wodchis cohort costs.

4.5 Incidence of eligible patients per year in Canada

The incidence of eligible patients was calculated using data from the Canadian Institute for Health Information (CIHI) gathered prior to the COVID-19 pandemic.(11) In 2013-2014 there were 4,046 patients per year classified as having respiratory failure and 5,137 patients classified as sepsis. Patients that met eligibility criteria for this study likely fell into one of those two categories (pneumonia can be classified as either). Since 2013-2014 the number of ICU admissions has likely increased (admissions in those two categories increased by 60-80% from 2007 to 2014). However, some patients classified as respiratory failure or sepsis would be invasively ventilated prior to ICU admission. In the MIMIC-IV cohort, 4.4% of all ICU admissions met the eligibility criteria for this study. In the AmsterdamUMCdb cohort, 5.5% of all ICU admissions met the eligibility criteria for this study. Given that there were more than 200,000 ICU admissions per year in Canada in 2013-2014, an estimate of 5,000 eligible patients per year in Canada is likely conservative.

4.6 Probability of long-term disability in patients ventilated for less than 7 days

Prior work provides detailed information about the probability of long-term disability for patients ventilated for 7 days or more. However, for patients who are never ventilated or ventilated for less than 7 days, there is less information. Among patients ventilated for 7 days or more, those in the lowest risk group (age < 42, ICU LOS < 14 days) had a 15% probability of requiring assistance for bathing or stair locomotion at 12 months. We felt this represented an obvious upper bound. We modeled the probabilities of long-term disability in each risk group using a beta distribution. For the probability of long-term disability for patients never ventilated or ventilated for 7 days or less, we chose a beta distribution with a mean of 0.03 and a standard deviation of 0.1. This amounted to a 58% chance that the probability of long-term disability was less than 1%, and a 16% chance that the probability of long-term disability was greater than 0.1. The mean probability was 5%.

5 Bayesian modelling of ventilator, oxygen therapy, and ward duration

5.1 Rationale

We used a cohort of non-intubated patients from the MIMIC-IV database to model the duration of ventilation (conditional on receipt of invasive ventilation), the duration of time in ICU without receiving ventilation, and the duration of a hospital ward stay after ICU discharge. This was the same cohort from which the target trial parameters were derived.(1) These were adult patients receiving oxygen via non-rebreather, high-flow nasal cannula, or non-invasive ventilation with an inspired oxygen fraction of 0.4 or higher. They had no immediate indications for invasive ventilation and no goals of care restrictions clearly prohibiting invasive ventilation.

5.2 Modeling

To fit the models, we used a Bayesian accelerated failure time model for each outcome (ventilator duration, non-ventilated ICU duration, ward duration) with a Weibull hazard. Covariates included age, sex, survival (all outcomes), and invasive ventilation status (for ICU non-ventilated duration and hospital length-of-stay after ICU discharge). Note that survival could be included because in the Treeage modeling, survival was determined prior to invasive ventilation status, length of invasive ventilation, length of ICU stay, or length of hospital stay after ICU discharge. Prior distributions were weakly skeptical. Programming was done in Stan and R.(25,26) The code is available in an online repository at <https://doi.org/10.5281/zenodo.7603995>.

5.3 Table e5 – coefficients derived from Bayesian accelerated failure time modeling

Outcome	Coefficient	Mean	Standard deviation
Ventilator duration	intercept	2.282046	0.125268
	Death by day 28	-0.45541	0.062491
	Age	-0.25038	0.068236
	Sex	-0.06371	0.036234
	Log(alpha)	-0.05543	0.075365
ICU non-ventilated duration	Intercept	1.771127	0.158789
	Death by day 28	-0.42614	0.065718
	IMV by day 28	-0.14789	0.076253
	Age	-0.03817	0.081279
	Sex	0.060461	0.041212
	Log(alpha)	-0.15365	0.069422
Hospital length-of-stay after first ICU discharge	Intercept	2.121145	0.169543
	Death by day 28	-0.4154	0.072992
	IMV by day 28	-0.10609	0.082323
	Age	-0.03265	0.084929
	Sex	0.083115	0.057048
	Log(alpha)	-0.27273	0.078065

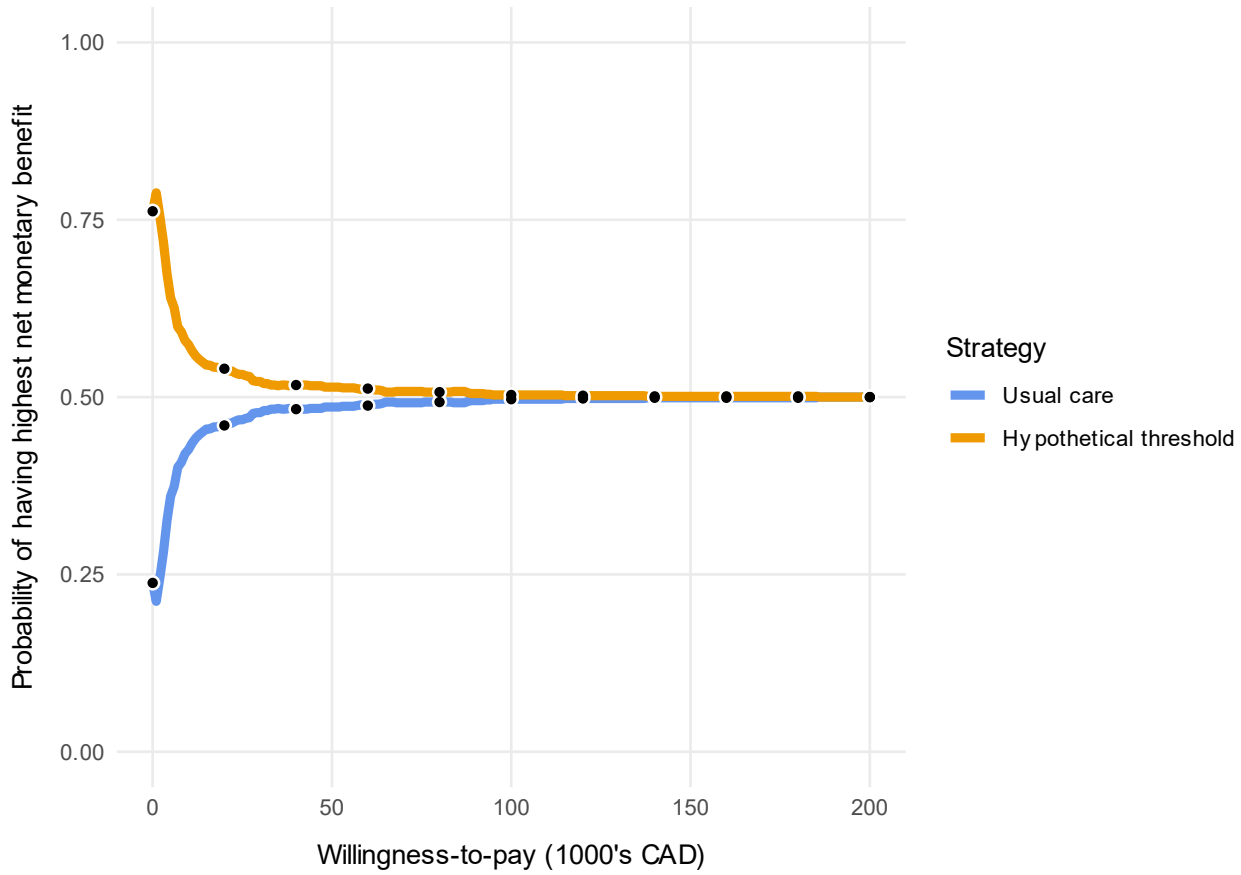
6 Sensitivity analysis results

6.1 Table e6: Model outputs, sensitivity analysis

	Usual care	Hypothetical threshold
Durations (Days)		
ICU, non-IMV duration	4.67 (3.34 to 6.46)	4.72 (3.42 to 6.7)
IMV duration (among ventilated people)	8.5 (5.76 to 12.4)	8.21 (5.52 to 12.2)
Ward duration	5.68 (4.24 to 7.76)	5.73 (4.25 to 7.75)
Hospital outcomes (%)		
Invasive ventilation	27.6 (13.1 to 45.4)	20.2 (7.6 to 38.1)
Survival	74.5 (51.5 to 91.8)	74.6 (53.5 to 92)
Long-term disability	5.73 (2.1 to 10.8)	4.56 (1.4 to 9.7)
Lifetime outcomes		
Life expectancy (years)	10.8 (7.18 to 14.1)	10.7 (7.25 to 13.9)
QALYs	8.2 (5.46 to 10.7)	8.23 (5.58 to 10.7)
Cost (1000's CAD)	74.7 (62.7 to 88.5)	71.7 (61 to 85)
Net monetary benefit (1000's CAD)	746 (474 to 990)	751 (488 to 992)
Comparative outcomes		
Probability of highest net monetary benefit	0.497	0.503
Incremental cost-utility ratio (CAD)	Reference	Dominant

Caption: Model outputs (mean and 95% credible interval). The hypothetical threshold dominates usual care by providing slightly better outcomes at slightly less cost. IMV – invasive mechanical ventilation, QALYs – quality-adjusted life years, CAD = 2022 Canadian dollars. Net monetary benefit using willingness-to-pay of 100,000 CAD per QALY.

6.2 Figure e2: Cost-effectiveness acceptability curve, sensitivity analysis



Caption: This figure shows the proportion of iterations that each strategy has the highest net monetary benefit versus willingness to pay. The strategies have equivalent net monetary benefit above a willingness-to-pay of 100,000 CAD per QALY.

7 References

1. Yarnell CJ, Angriman F, Ferreyro B, Liu K, De Grooth HJ, Burry L, et al. Oxygenation Thresholds for Invasive Ventilation in Hypoxemic Respiratory Failure: A Target Trial Emulation in Two Cohorts [Internet]. Rochester, NY; 2022 [cited 2022 Dec 28]. Available from: <https://papers.ssrn.com/abstract=4276595>
2. Johnson A, Bulgarelli L, Pollard T, Horng S, Celi LA, Mark R. MIMIC-IV (version 0.4) [Internet]. PhysioNet; 2020. Available from: <https://doi.org/10.13026/a3wn-hq05>
3. Goldberger AL, Amaral LA, Glass L, Hausdorff JM, Ivanov PC, Mark RG, et al. PhysioBank, PhysioToolkit, PhysioNet: Components of a new research resource for complex physiologic signals. *Circulation*. 2000 Jun;101(23):E215-20.
4. Thorat PJ, Peppink JM, Driessen RH, Sijbrands EJG, Kompanje EJO, Kaplan L, et al. Sharing ICU Patient Data Responsibly Under the Society of Critical Care Medicine/European Society of Intensive Care Medicine Joint Data Science Collaboration: The Amsterdam University Medical Centers Database (AmsterdamUMCdb) Example. *Crit Care Med*. 2021 Jun 1;49(6):e563–77.
5. Sauer CM, Dam TA, Celi LA, Faltys M, de la Hoz MAA, Adhikari L, et al. Systematic Review and Comparison of Publicly Available ICU Data Sets-A Decision Guide for Clinicians and Data Scientists. *Crit Care Med*. 2022 Mar 2;
6. Yarnell CJ, Angriman F, Ferreyro BL, Liu K, De Grooth HJ, Burry L, et al. Oxygenation thresholds for invasive ventilation in hypoxemic respiratory failure: a target trial emulation in two cohorts. *Critical Care*. 2023 Feb 22;27(1):67.
7. Evans J, Kobewka D, Thavorn K, D'Egidio G, Rosenberg E, Kyeremanteng K. The impact of reducing intensive care unit length of stay on hospital costs: evidence from a tertiary care hospital in Canada. *Can J Anesth/J Can Anesth*. 2018 Jun 1;65(6):627–35.
8. Kaier K, Heister T, Wolff J, Wolkewitz M. Mechanical ventilation and the daily cost of ICU care. *BMC Health Serv Res*. 2020 Mar 31;20:267.
9. Inflation Calculator [Internet]. [cited 2023 Feb 2]. Available from: <https://www.bankofcanada.ca/rates/related/inflation-calculator/>
10. Tan SS, Hakkaart-van Roijen L, Al MJ, Bouwmans CA, Hoogendoorn ME, Spronk PE, et al. A microcosting study of intensive care unit stay in the Netherlands. *J Intensive Care Med*. 2008 Aug;23(4):250–7.
11. Canadian Institute for Health Information. *Care in Canadian ICUs*. Ottawa, Ontario: CIHI; 2016 p. 36.
12. Dasta JF, McLaughlin TP, Mody SH, Piech CT. Daily cost of an intensive care unit day: The contribution of mechanical ventilation*. *Critical Care Medicine*. 2005 Jun;33(6):1266–71.
13. Cuthbertson BH, Roughton S, Jenkinson D, MacLennan G, Vale L. Quality of life in the five years after intensive care: a cohort study. *Critical care (London, England)*. 2010;14(1):R6.

14. Kristinsdottir EA, Long TE, Sigvaldason K, Karason S, Sigurdsson GH, Sigurdsson MI. Long-term survival after intensive care: A retrospective cohort study. *Acta anaesthesiologica Scandinavica*. 2020;64(1):75–84.
15. Hill AD, Fowler RA, Burns KEA, Rose L, Pinto RL, Scales DC. Long-Term Outcomes and Health Care Utilization after Prolonged Mechanical Ventilation. *Annals ATS*. 2017 Mar;14(3):355–62.
16. Khandelwal N, Hough CL, Bansal A, Veenstra DL, Treggiari MM. Long-Term Survival in Patients With Severe Acute Respiratory Distress Syndrome and Rescue Therapies for Refractory Hypoxemia. *Critical care medicine*. 2014;42(7):1610–8.
17. Thompson K, Taylor C, Jan S, Li Q, Hammond N, Myburgh J, et al. Health-related outcomes of critically ill patients with and without sepsis. *Intensive care medicine*. 2018;44(8):1249–57.
18. Steenbergen S, Rijkenberg S, Adonis T, Kroeze G, van Stijn I, Endeman H. Long-term treated intensive care patients outcomes: the one-year mortality rate, quality of life, health care use and long-term complications as reported by general practitioners. *BMC Anesthesiology*. 2015;15(1):142–142.
19. Williams TA, Dobb GJ, Finn JC, Knuiman MW, Geelhoed E, Lee KY, et al. Determinants of long-term survival after intensive care. *Critical care medicine*. 2008;36(5):1523–30.
20. Sprooten RTM, Rohde GGU, Janssen MTHF, Cobben NAM, Wouters EFM, Franssen FME. Predictors for long-term mortality in COPD patients requiring non-invasive positive pressure ventilation for the treatment of acute respiratory failure. *The Clinical Respiratory Journal*. 2020;14(12):1144–52.
21. Meynaar IA, Van Den Boogaard M, Tangkau PL, Dawson L, Sleswijk Visser S, Bakker J. Long-term survival after ICU treatment. *Minerva Anestesiologica*. 2012 Dec;78(12):1324–32.
22. Liu N, Zhou Y, Lee JJ. IPDfromKM: reconstruct individual patient data from published Kaplan-Meier survival curves. *BMC Medical Research Methodology*. 2021 Jun 1;21(1):111.
23. Herridge MS, Chu LM, Matte A, Tomlinson G, Chan L, Thomas C, et al. The RECOVER Program: Disability Risk Groups and 1-Year Outcome after 7 or More Days of Mechanical Ventilation. *American Journal of Respiratory and Critical Care Medicine*. 2016 Oct;194(7):831–44.
24. Wodchis WP, Austin PC, Henry DA. A 3-year study of high-cost users of health care. *CMAJ*. 2016 Feb 16;188(3):182–8.
25. R Core Team. R: A Language and Environment for Statistical Computing [Internet]. Vienna, Austria: R Foundation for Statistical Computing; 2020. Available from: <https://www.r-project.org>
26. Carpenter B, Gelman A, Hoffman MD, Lee D, Goodrich B, Betancourt M, et al. Stan: A probabilistic programming language. *Journal of Statistical Software*. 2017 Jan;76(1):1–32.