

Original article

Development and validation of a multivariate model for predicting heart failure hospitalization and mortality in patients receiving maintenance hemodialysis

Wenwu Tang^{1†}; Xinzhu Yuan^{1†}; Zhixin Wang^{1†}; Ying Zhang¹; Xiaoxia Chen²; Xiaohua Yang³; Zhirui Qi⁴; Ju Zhang³; Jie Li⁵; Xisheng Xie^{1, *}

1. Department of Nephrology, Second Clinical College of Nanchong North Sichuan Medical College, Nanchong Central Hospital, China
2. Department of Nephrology, Suining Central Hospital, China
3. Department of Nephrology, Guangyuan Central Hospital, China
4. Department of Cardiology, North Sichuan Medical College, Nanchong City, China
5. General Practice Department of Nanchong North Sichuan Medical College

† W.Tang, X.Yuan and Z.Wang contributed equally

* Correspondence: Xisheng Xie, xishengxie2023@163.com.

Abstract

Background: Heart failure (HF) is a common cardiovascular disease in patients receiving maintenance hemodialysis (MHD). Once these patients on MHD exhibit HF, their hospitalization rate, mortality, and economic burden will be significantly increased. Early identification and prediction of hospitalization and death are of great importance for reducing hospitalization and mortality. This study used multicenter clinical data to develop and externally validate clinical risk models to predict expected mortality and HF hospitalization rates in MHD patients with HF.

Materials and Methods: From January 2017 to October 2022, 348 patients receiving MHD from four participating centers were enrolled. Demographic data, MHD treatment modalities, laboratory tests, and echocardiography data were collected when the initial event occurred. Three centers were randomly assigned to the modeling dataset (n=258), and one center was assigned to the external validation set (n=90). Considering a composite outcome of HF hospitalization and death as the primary endpoint and hospitalization due to HF or death as the secondary endpoint, a COX clinical prediction model was constructed and verified using internal and external datasets.

Results: The median age of patients in the modeling cohort was 63 years old, 41.5% of patients were women; 165 (61%) had a history of HF; 81 (31.4%) were hospitalized for HF; and 39 (15.1%) patients had died. The c-statistic values for composite outcome, hospitalization for HF, and mortality were 0.812, 0.808, and 0.811, respectively. The predictors of death and hospitalization outcomes caused by HF are significantly different. The strongest predictors of HF hospitalization outcomes were advanced age, multiple HF hospitalizations, hyponatremia,

high levels of NT-proBNP and hs-cTnT, and larger MVE values. The strongest predictors of mortality were longer dialysis age, combined atrial fibrillation, calcification of the aortic or mitral valve (especially calcification, and in particular aortic valve calcification), pleural effusion, low serum sodium, and higher levels of hs-cTnT. The median age of the patients in the external validation cohort was 63 years old; 28.8% were female; 35 (38.1%) had a history of HF; 11 (12.2%) were hospitalized for HF; and 5 (5.6%) died. The c-statistic of the predictive models for composite outcome, hospitalisation for HF, and mortality was comparable to that of the modelling cohort.

Conclusion: The model established in this study is stable and reliable and the included variables are easily obtained from the routine clinical environment. The model can provide useful risk factors and prognostic information for patients with MHD combined with HF.

Keywords: heart failure, MHD patients, mortality, predictive model, external validation.

Abbreviations

AST	aspartate aminotransferase
AAO	ascending aorta
ALT	alanine aminotransferase
AO	aorta or aorta root
AV	aortic valve
BMI	body mass index
CKD	chronic kidney disease
COPD	chronic obstructive pulmonary disease
CVD	cardiovascular disease
DCA	decision curve analysis
FS	fractional shortening
HF	heart failure
hs-cTnT	high sensitivity troponin T
IQR	interquartile ranges
IVS	interventricular septum
KDIGO	Kidney Disease Improving Global Outcomes
LA	left atrium
LASSO	Least Absolute Shrinkage and Selection Operator
LV	left ventricle
LVEF	left ventricular ejection fraction
LVPW	left ventricular posterior wall
MHD	maintenance hemodialysis
MPA	main pulmonary artery
MVe	anterior mitral flow velocity
NT-proBNP	N-terminal B-type natriuretic peptide
NYHA	New York Heart Association
RA	right atrium
RLS	
ROC	construct receiver operating characteristic
RV	right ventricle
TRIPOD	Transparent Reporting of a Multivariate Prediction Model for Individual Prognosis or Diagnosis

1. Introduction

The number of patients receiving renal replacement therapy (RRT) worldwide exceeded 2.5 million in 2010, and is expected to increase to approximately 5.4 million by 2030^[1]. The risk of cardiovascular disease (CVD) in patients on maintenance hemodialysis (MHD) is 20-times higher than that in the general population, and heart failure (HF) is the second most common CVD in patients undergoing MHD (about 10.2%)^[2,3]. According to the United States Renal Data System data report, the medical insurance expenditure for patients with MHD in 2016 alone was as high as \$35 billion; in addition, the 2-year mortality rate of patients with chronic kidney disease (CKD) but without HF was approximately 16.5%, while the overall 2-year mortality rate those with HF was as high as 33.3%^[4-6].

Compared to the general population of patients with HF, patients receiving MHD face more complex risk factors for uremic cardiomyopathy based on traditional risk factors (hypertension, diabetes) due to impaired glomerular filtration and secretory function; Furthermore, although patients receiving MHD can prolong survival with long-term RRT treatment, this also increases risks related to dialysis (such as hemodynamics, rapid changes in electrolyte composition, and micro-inflammatory state induced by dialysis materials). Therefore, it is becoming an urgent need to effectively identify individuals with HF at high-risk of hospitalization or death among these patients^[7-9].

Although the clinical condition is severe, it is still difficult to predict the mortality and hospitalization rate of HF patients using the published prediction models. A meta-analysis reported that only 33% of the 117 published predictive models were validated in separate cohort studies, and most studies only reported moderate predictive performance^[9,10]. Joanne's

predictive model had a c-statistic of 0.71 and 0.70 for HF hospitalization and death, respectively^[11]; while the c-statistics of Joshua's prediction model were 0.80 and 0.79, respectively^[10-12]. Unfortunately, these prediction models almost all excluded or did not focus on patients receiving MHD, so they are not suitable for this specific population. Recently, the model by Gotta et al. focused mainly on the prediction of death in patients with MHD under 30 years of age but did consider the effect of HF in these patients^[13]. The purpose of the present study is to establish a prediction model suitable for patients with MHD to accurately predict the risk of hospitalisation and death from HF, to strengthen the early identification and intervention of clinicians, and to assist doctors and patients in making better personalized management decisions to effectively improve the prognosis of patients receiving MHD. In addition, the model also helps to select high-risk patients more accurately for future clinical trials and to enrich the reported incidence of clinical events, and reduce the sample size of future studies^[14].

2. Materials and methods

2.1 Materials

We used the Transparent Reporting of a Multivariate Prediction Model for Individual Prognosis or Diagnosis (TRIPOD) as a guide to develop and validate our model.

2.1.1 Subjects

We enrolled subjects From January 2017 to October 2022 (with at least 60 days of follow-up), 1079 patients receiving MHD from four centers (Nanchong Central Hospital, Guangyuan Central Hospital, Suining Central Hospital and Peng'an County People's Hospital). Patients

with CKD5 dialysis who met the Kidney Disease Improving Global Outcomes (KDIGO) criteria developed by the American Society of Nephrology, and regular hemodialysis time ≥ 3 months, at least 2 times a week, and met the clinical diagnostic criteria determined by the International RLS Study Group in 2014 were enrolled.

2.1.2 Inclusion criteria

All patients (1) aged >18 years old; (2) who had received MHD treatment for more than 3 months; (3) conformed to the diagnostic criteria of HF; (4) who had provided informed consent and voluntary participation in this study; and (5) those with complete clinical data were selected for the final analysis.

2.1.3 Exclusion criteria

Patients meeting the following criteria were excluded: (i) having a history of liver disease, malignant tumor, mental illness, or other serious diseases; (ii) patients who were unable to cooperate, unwilling to participate, or had incomplete clinical data. Following the application of the inclusion and exclusion criteria, 693 patients without hospitalization history and 38 patients with missing biochemical or echocardiographic data were excluded, and 348 patients were included in the study (Figure 1).

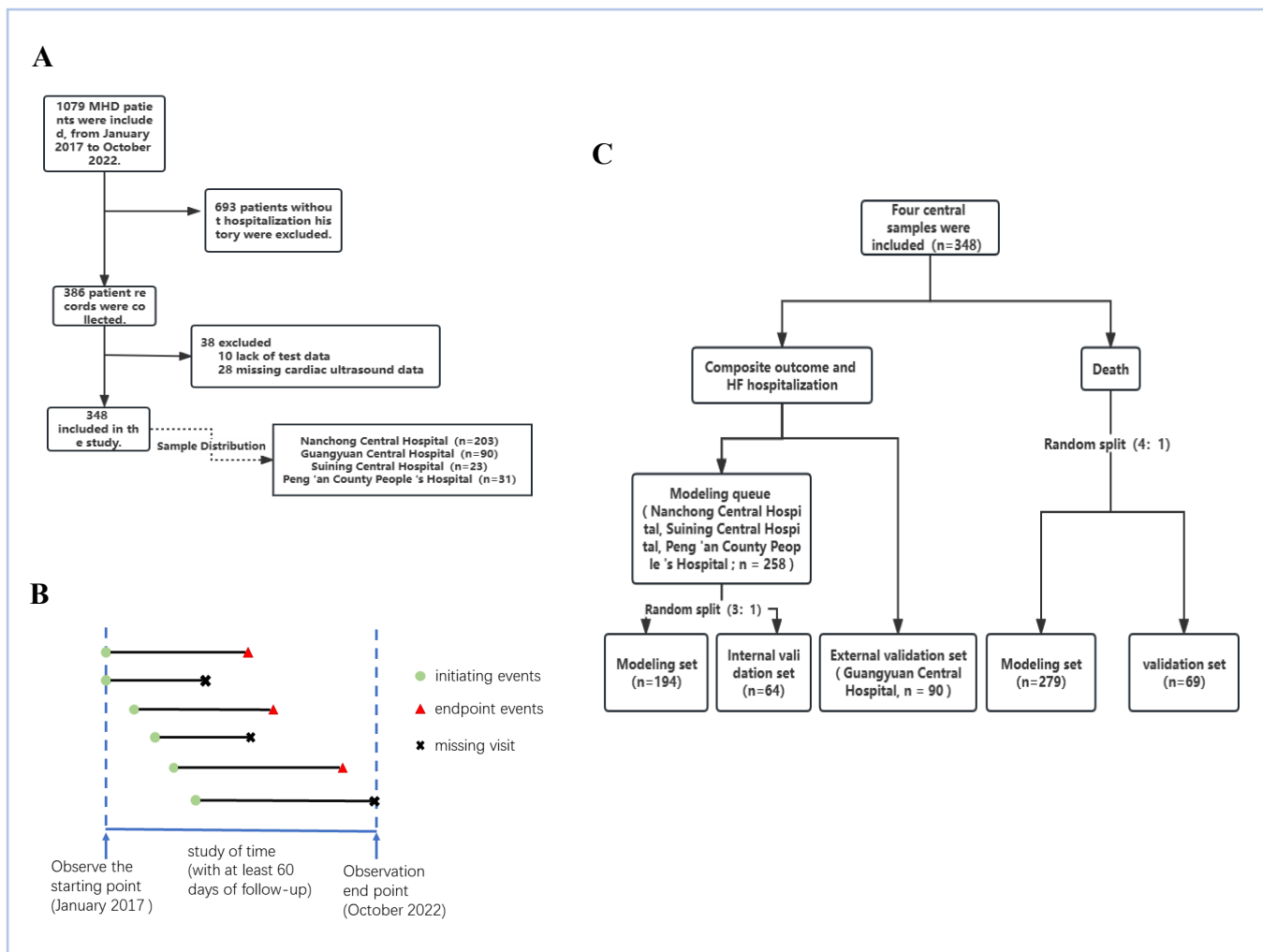


Figure 1 Research flow chart

(A) Patient inclusion process according to nadir criteria; (B) schematic diagram of start- and endpoint events; (C) schematic diagram of allocation of the modelling and validation datasets.

2.2 Methods

2.1.1 Diagnostic criteria for HF

The following criteria were used to diagnose HF in this study: (a) new or worsening HF symptoms or previous hospitalisation history; (b) left ventricular ejection fraction (LVEF) $\leq 40\%$; if LVEF $>40\%$, abnormal N-terminal B-type natriuretic peptide (NT-proBNP)

(>11215.2 pg/mL), (c) with either ‘left ventricular hypertrophy and/or left atrial enlargement’ or ‘cardiac diastolic dysfunction’. A diagnosis of HF was made by meeting either a/b or a/c of the above criteria. The diagnosis of HF was made by two trained physicians, and a specialist was consulted in case of disagreement.

2.1.2 NT-proBNP

In this study, NT-proBNP > 11215.2 pg/mL was selected as the diagnostic threshold for HF in MHD patients.

2.2.3 Starting point and endpoint of observation

The time of first hospitalization of the patient was taken as the starting point of observation, and the times of hospitalization due to HF, death, transfer, renal transplantation, and arrival after follow-up was taken as the endpoint of observation. The time between the starting point and the endpoint was considered as the follow-up time. In this study, the composite outcome of HF hospitalization and death was the primary endpoint, and HF hospitalization or death was the secondary endpoint (Figure 1).

2.2.4 Study Indicators

A total of 112 variables were included in this study. (1) General and dialysis-related data: including sex, age, dialysis age, type of dialysis vascular access, reasons for dialysis (diabetic nephropathy, glomerular inflammatory disease, or hypertension), previous cumulative HF hospitalization times and total hospitalization days, body mass index (BMI), dialysis times (weekly), dialysis duration (h/time). (2) Clinical data: vital signs at admission (pulse, pulse pressure difference), typical symptoms at HF (exertional or nocturnal paroxysmal dyspnea, sitting breathing, edema, rales, third heart sound, jugular vein filling, or positive hepatic neck reflux sign), history of coronary heart disease or coronary stent surgery, other surgical history (thyroid radiofrequency ablation or arterial dissection), history of cerebrovascular accident (cerebral infarction or cerebral hemorrhage), history of atrial fibrillation, bradycardia (conduction block), metabolic acidosis, infection (pneumonia, urinary tract infection, dialysis catheter-related infection, and sepsis), thyroid function, history of diabetes and diabetes-related complications (such as diabetic retinopathy, and diabetic peripheral neuropathy), chronic

obstructive pulmonary disease (COPD), history of other lung diseases (respiratory failure or pulmonary edema, bronchitis, bronchiectasis, emphysema or bullae, silicosis, pneumoconiosis, lung damage, pulmonary fibrosis), liver or pancreatic diseases (fatty liver, cirrhosis and decompensation, pancreatic injury, hepatitis B), history of cholecystitis or cholecystectomy, gastrointestinal ulcer, gastrointestinal inflammation and diarrhea, gastrointestinal bleeding, history of serous cavity effusion (pericardium, chest, pelvis), coagulation abnormalities or less platelets, immunodeficiency, tumor, NYHA classification, HF stage, and length of hospital stay at the beginning of the event. (3) Laboratory examination: white blood cell count, C-reactive protein, hemoglobin, parathyroid hormone, NT-proBNP, high sensitivity troponin T (hs-cTnT), total protein, albumin, uric acid, creatinine, cystatin, triglyceride, total cholesterol, high density lipoprotein cholesterol, low density lipoprotein cholesterol, aspartate aminotransferase (AST), alanine aminotransferase (ALT), total bilirubin, serum potassium, serum sodium, serum calcium, and serum phosphorus. (4) Echocardiographic data: left atrial changes, left ventricular enlargement (atrial and ventricular), right atrial changes, right ventricular enlargement, whole heart enlargement, aortic or pulmonary artery changes (widened), interventricular septum changes (thickened), left ventricular wall changes (hypertrophy), ventricular wall motion ability (reverse movement of interventricular septum and left ventricular posterior wall, and diffuse weakening of left ventricular wall), calcification of aortic valve or mitral valve, valvular regurgitation (aortic valve, pulmonary valve, mitral valve, and tricuspid valve), left ventricular diastolic dysfunction, left ventricular or right ventricular systolic dysfunction, pulmonary hypertension, pericardial effusion (mm), left atrium (LA), left ventricle (LV), right atrium (RA), right ventricle (RV), interventricular septum (IVS), left ventricular posterior wall (LVPW),

main pulmonary artery (MPA), aorta or aorta root (AO), ascending aorta (AAO), anterior mitral flow velocity (MVe), aortic valve (AV), fractional shortening (FS), and LVEF. The reasons for including the above variables are as follows: First, factors related to death and hospitalization rates have been identified in combination with guidelines and related studies. Secondly, compared to non-MHD patients, risk factors for HF in MHD patients were more complex. This study collected data relative to the above variables based on the data availability of each center and cases with missing data were excluded.

2.3. Design of the prediction model

2.3.1 Construction and evaluation of prediction model

Patients were divided into training and test groups based on center enrolment, and the clinical features were selected from all independent variables. The importance of each index in different model training and test groups was compared using a COX prediction model, and the best model was then used for evaluation and verification. The detailed steps are described below.

2.3.1.1 Allocation of modeling and validation sets

The four centers were divided into two groups with the composite endpoint of “death and HF hospitalization” or “HF hospitalization”. Three centers were assigned to the modelling set (n=258) and one center was assigned to the validation set (n=90). The patients in the modelling cohort (n=258) were then divided into a modelling set (n=194) and an internal validation set

(n=64) in a 3:1 ratio. The median follow-up for the modeling cohort was 10 months (IQR, 5–16 months). Because the sample size of death events included only 44 cases, for the model established with “death” as the outcome, all patients (n=348) were randomly divided into the modeling cohort (n=279) and the internal validation cohort (n=69) according to the ratio of 4:1. The median follow-up time of the modeling cohort was 12 months (IQR: 7–20 months). The allocation process is detailed in Figure 1.

2.3.1.2 Statistical analysis of clinical features for screening patients

SPSS v26.0 (IBM ,USA) was used for COX univariate analysis and R software (University of Auckland, New Zealand , glmnet 4.2.2) for Least Absolute Shrinkage and Selection Operator (LASSO) regression analysis. LASSO regression can compress variable coefficients, prevent overfitting, and resolve serious collinearity concerns^[15]. SPSS v26.0 was used for multivariate COX regression analysis, and finally the characteristic variables with two-tailed P-values <0.05 were obtained^[16].

2.3.1.3 Model verification

R software (version 4.2.2) and the “survivalROC” package were used to construct receiver operating characteristic (ROC) curves of the modeling set and the validation set, and the area under the curve and c-statistics were calculated to validate the accuracy of the prediction model^[17]. The R software package “survivalROC” was used to draw calibration curves to measure the predictive ability of the model and to reflect the concordance between the predicted risk and the actual risk^[17]. To assess the clinical applicability of the prediction model, the R software package 'stdca' was used to perform decision curve analysis (DCA)^[18].

2.4 Statistical analysis

Variables included in the modelling and validation sets were compared. Continuous variables were expressed as median and interquartile ranges (IQR) and compared using the Mann–Whitney U test. Categorical variables were expressed as numbers and percentages and compared using the chi-square test. A statistically significant differences was defined by two-sided tests with a P-value<0.05. SPSS v26.0 and the R software package v4.2.2 were used for statistical analysis.

3. Results

3.1 Comparison of baseline data

All variables were investigated for all patients at the time of the initiation event: laboratory tests and ultrasound data were the first results after admission, and data related to dialysis treatment were the closest to the pre-initiation schedule. Hyponatremia was defined as a serum sodium level of 135 mmol/L. Infections included pneumonia, sepsis, urinary tract, or dialysis catheter-related infections. The specific baseline data for the modelling set and the external validation set are shown in Table 1. The differences between the two sets were not statistically significant ($P > 0.05$).

Table 1 Baseline characteristics of the modeling and external validation sets

Variable	Training set (N=258)	Testing set (n=90)	Z	P- value
-----------------	---------------------------------	---------------------------	----------	---------------------

Sex, n%			5.32	0.021
Female	107 (41.5)	25 (28.8)		
Male	151 (58.5)	65 (72.2)		
Nephritis (cause of entering dialysis), n%			22.21	0.000
No	143 (55.4)	75 (83.3)		
Yes	115 (44.6)	15(16.7)		
Diabetes, n%			0.02	0.895
No	147 (57)	52 (57.8)		
Yes	111 (43)	38 (42.2)		
Right internal jugular vein (dialysis pathway), n%			1.66	0.197
No	253 (98.1)	86(95.6)		
Yes	5(1.9)	9(2.6)		
Dyspnea (exertional or nocturnal paroxysmal), n%			46.26	0.000
No	99 (38.4)	72 (80)		
Yes	159 (61.6)	18 (20)		
Lung wet rales, n%			1.18	0.276
No	189 (73.3)	82 (91.1)		
Yes	69 (26.7)	8 (8.9)		
Positive jugular vein filling or hepatic neck reflux sign, n%			9.34	0.006
No	222 (86)	87 (96.7)		
Yes	36 (14)	3 (3.3)		
Coronary heart disease or coronary stenosis, n%			0.04	0.846
No	206 (79.8)	71 (78.9)		

Yes	52 (20.2)	19 (21.1)		
Encephalorrhagia, n%			0.76	0.383
No	251 (97.3)	89(98.9)		
Yes	7 (2.7)	1(1.1)		
Atrial fibrillation, n%			0.00	1.000
No	227 (88)	79 (87.8)		
Yes	31 (12)	11 (12.2)		
Peripheral nerve or autonomic neuropathy, n%			0.38	0.538
No	203 (78.7)	68 (75.6)		
Yes	55 (21.3)	22 (24.4)		
COPD, n%			0.05	0.819
No	227 (88)	80 (88.9)		
Yes	31 (12)	10 (11.1)		
Emphysema or pulmonary bulla, n%			0.00	0.956
No	223 (86.4)	78 (86.5)		
Yes	35 (13.6)	12 (13.3)		
History of gallstones and cholecystectomy, n%			0.88	0.347
No	219 (84.9)	80 (88.9)		
Yes	39 (15.1)	10 (11.1)		
Infection, n%			0.46	0.497
No	124 (48.1)	47 (52.2)		
Yes	134 (51.9)	43 (47.8)		
Hydrothorax, n%			15.57	0.000
No	174 (67.4)	80 (88.9)		
Yes	84 (32.6)	10 (11.1)		

Pelvic or peritoneal effusions,			7.93	0.008
n%				
No	220 (85.3)	86 (95.6)		
Yes	38 (14.7)	4 (4.4)		
Right ventricular enlargement, n%			0.27	0.604
No	253 (98.1)	89 (98.9)		
Yes	5 (1.9)	1 (1.1)		
Cardiac valve calcification (aortic or mitral valve), n%			0.01	0.906
No	176 (68.2)	62 (68.9)		
Yes	82 (31.8)	28 (31.1)		
Pulmonary valve regurgitation, n%			2.31	0.129
No	233 (90.3)	76 (84.4)		
Yes	25 (9.7)	14 (15.6)		
Mitral reflux, n%			4.05	0.044
No	95 (36.8)	44 (48.9)		
Yes	163 (63.2)	46 (51.1)		
Tricuspid regurgitation, n%			6.47	0.011
No	109 (42.2)	52 (57.8)		
Yes	149 (57.8)	38 (42.2)		
Pulmonary artery hypertension, n%			10.45	0.001
No	186 (72.1)	80 (88.9)		
Yes	72 (27.9)	10 (11.1)		
Left ventricular diastolic dysfunction, n%			32.80	0.000
No	83 (32.2)	60 (66.7)		

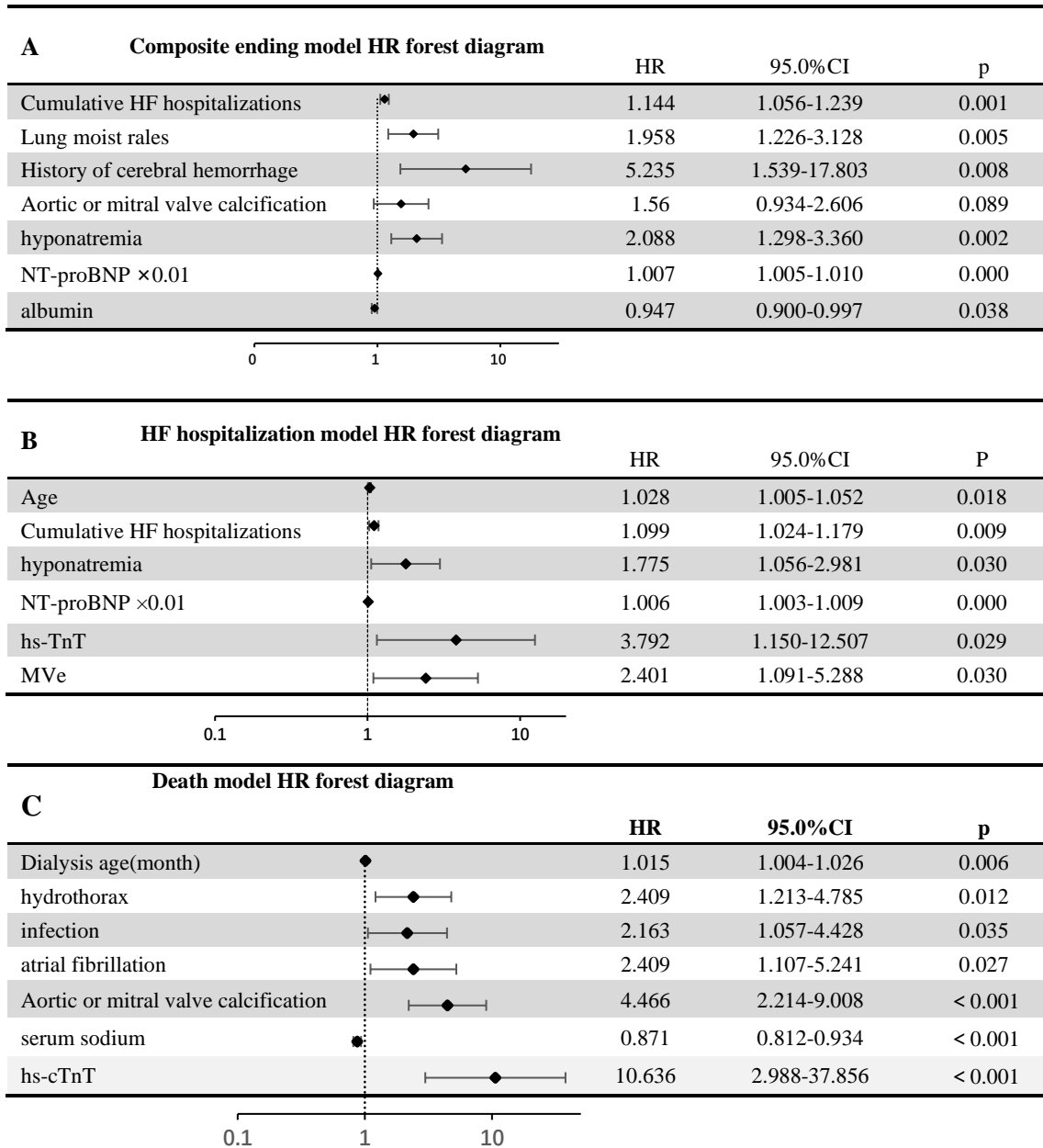
Yes	175 (66.7)	30 (33.3)		
Hyponatremia, n%			7.52	0.006
No	147 (57)	66 (73.3)		
Yes	111 (43)	24 (26.7)		
Age, median [IQR]	63 [50-72.25]	63 [54-74]	-0.96	0.337
Dialysis age (months), median [IQR]	7.5 [0-37]	0 [0-26]	-2.66	0.008
Pulse pressure, median [IQR]	64 [51-79]	68 [54.75-81]	-1.36	0.173
Dialysis times (weekly), median [IQR]	3 [3-3]	2 [2-3]	-11.62	0.000
Dialysis duration (hours), median [IQR]	4 [4-4]	4 [4-4]	-0.16	0.875
The cumulative number of hospitalizations due to HF, median [IQR]	3 [1-5]	3.5 [2-7]	-1.98	0.048
Hospitalization days (initial events), median [IQR]	13 [8.75-20]	16 [11-19.25]	-1.89	0.058
NT-proBNP, median [IQR]	19149.5 [6555-35000]	9349 [3370.75-26045.75]	-3.18	0.001
hs-TnT, median [IQR]	0.07 [0.0425-0.13575]	0.0585 [0.038-0.084]	-2.46	0.014
Albumin, median [IQR]	38.7 [34.9-41.725]	36.75 [32.6-39.625]	-3.39	0.001
Uric acid, median [IQR]	387.55 [290.575-480]	398.5 [305.5-488]	-0.54	0.590

	778.8 [537.875– 1003.25]	637.5 [503.5-875.5]	-2.92	0.003
Creatinine, median [IQR]				
AST, median [IQR]	17 [13-26.025]	15 [11–21]	-2.38	0.017
ALT, median [IQR]	11 [5.75-20]	13 [9-23.25]	-3.10	0.002
Total bilirubin, median [IQR]	5.8 [4.175- 8.125]	6.8 [5.1-9.5]	-2.21	0.027
Serum calcium, median [IQR]	2.07 [1.83-2.21]	2 [1.8025-2.165]	-1.52	0.130
Serum phosphorus, median [IQR]	1.67 [1.2-2.24]	1.71 [1.1775– 2.1925]	-0.35	0.726
Pericardial effusion (mm), median [IQR]	0 [0-3]	0 [0-3.25]	-1.07	0.284
Internal diameter of left atrium (LA), median [IQR]	37 [35-41.25]	37 [34-40.25]	-0.84	0.403
Left ventricular diameter (LV), median [IQR]	47 [44-51.25]	48 [44.47-51]	-0.30	0.768
Right atrial diameter (RA), median [IQR]	37 [34-40]	32 [29-35]	-8.42	0.000
Main pulmonary artery diameter (MPA), median [IQR]	22 [20-25]	21 [19-23]	-3.50	0.000
Mve, median [IQR]	0.9 [0.7-1.1]	0.9 [0.7-1.1]	-0.78	0.434
FS, median [IQR]	34 [30-38]	36 [31-38]	-1.31	0.190
EF, median [IQR]	63 [58-68]	65 [59-68.25]	-1.22	0.221

3.2 Model construction

The results of COX univariate analysis and LASSO regression analysis on the dependent variables composite endpoint and HF hospitalization showed that the number of predictors could be reduced to 16 and 10, respectively. Taking death as the dependent variable, 19 predictors were identified as independent variables after univariate analysis (Supplementary Tables 1 and 2). To further control for the influence of confounding factors, multivariate COX stepwise regression analysis was performed on the above variables, and a risk prediction model was constructed. The composite endpoint prediction model contained seven variables. A higher number of hospitalizations due to HF (pulmonary rales, hyponatremia, or hypoalbuminemia), previous history of cerebral hemorrhage, aortic or mitral valve calcification, on by echocardiography, and higher NT-proBNP levels could predict the composite outcome (Table 2). The model for predicting HF hospitalization included six variables: older age, previous hospitalizations for HF, hyponatremia at the time of HF, higher NT-proBNP and high-sensitivity troponin T (hs-TnT) levels, higher MVe values measured by cardiac ultrasound could predict HF hospitalization (Table 2). The predictive death model contained seven variables. Longer dialysis age, previous history of atrial fibrillation, presence of aortic or mitral valve calcification (VC) on echocardiography, the occurrence of HF with infection and pleural effusion, low serum sodium levels, and higher hs-TnT could predict death (Table 2 and Supplementary Table 3).

Table 2 Univariate model built based on the composite outcome



3.3 Model verification

According to the composite outcome prediction model, a nomogram was drawn to predict the composite endpoint at 1-2 years. Drawing a line directly to the 1-2-year probability axis after summing the points for each variable to obtain total score, indicates the probability of HF hospitalization or death in 1-2 years. The receiver operating characteristic (ROC) curves of the

modeling set and the validation set were plotted, and the area under the curve and C statistics (Table 3) were calculated. The calibration curve, decision curve analysis (DCA), and Kaplan-Meier (K-M) curves were plotted (Figure 2).

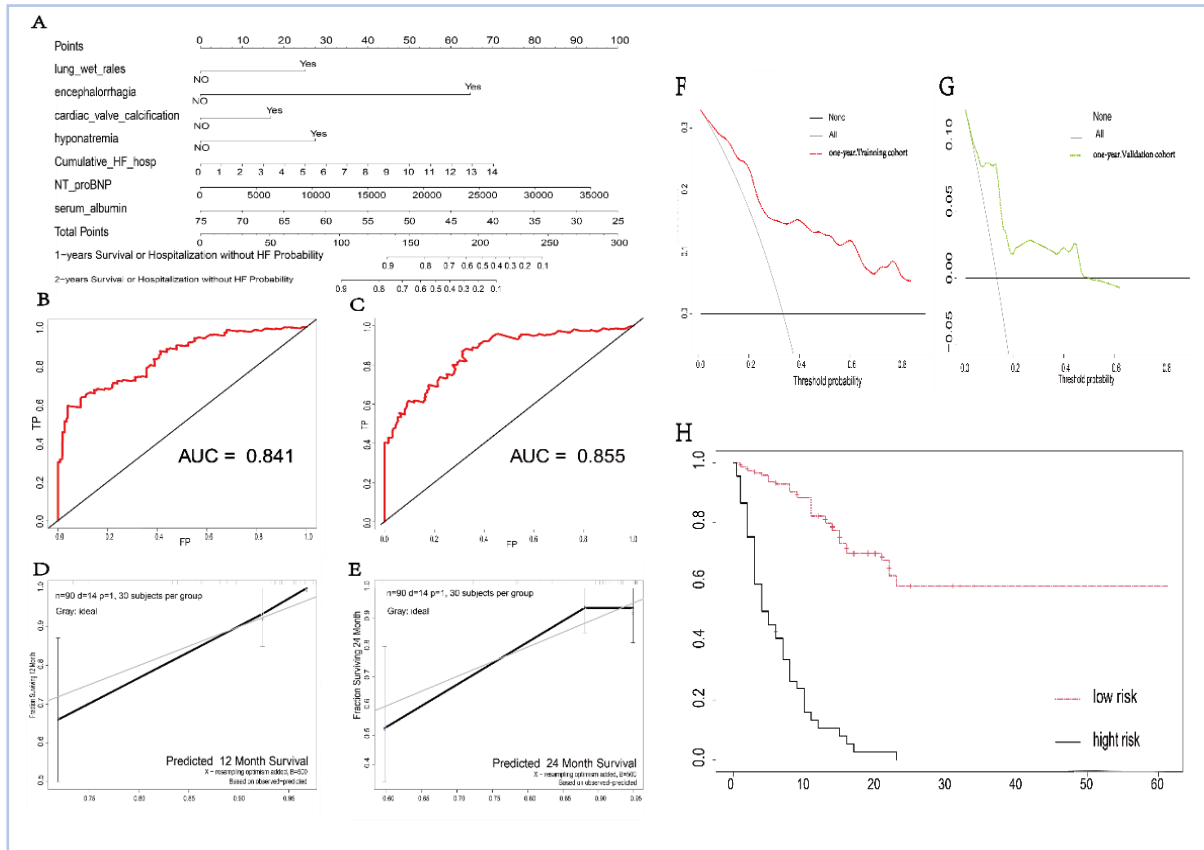


Figure 2: Validation of composite outcome prediction model

(A) Predictive composite outcome model and nomogram. (B-C) The AUC curve of a 1-year and 2-year composite outcome. (D-E) Calibration chart for predicting 1- and 2-year composite outcomes. Clinical decision curve analysis of the nomogram: the Y axis represents fraction surviving, the X axis represents the threshold probability, the red line represents the net benefit of the nomogram model in the training cohort, and the green line represents the net benefit of the nomogram model in the validation cohort. (F) Clinical decision curve analysis of the nomogram model in the training cohort and (G) for the validation cohort. The Kaplan–Meier survival curve was drawn according to the risk of death or hospitalization due to HF.

A nomogram for predicting HF hospitalization was drawn based on the results of the HF hospitalization prediction model. Drawing a line to the 1-2-year probability axis after summing the points of each variable to obtain a total score, indicates the 1-2 year survival probability following HF hospitalization. The receiver operating characteristic (ROC) curves of the modeling set and the validation set were plotted, and the area under the curve and C statistics (Table 3) were calculated. The calibration curve, decision curve analysis (DCA), and Kaplan-Meier (K-M) curves were plotted (Figure 3).

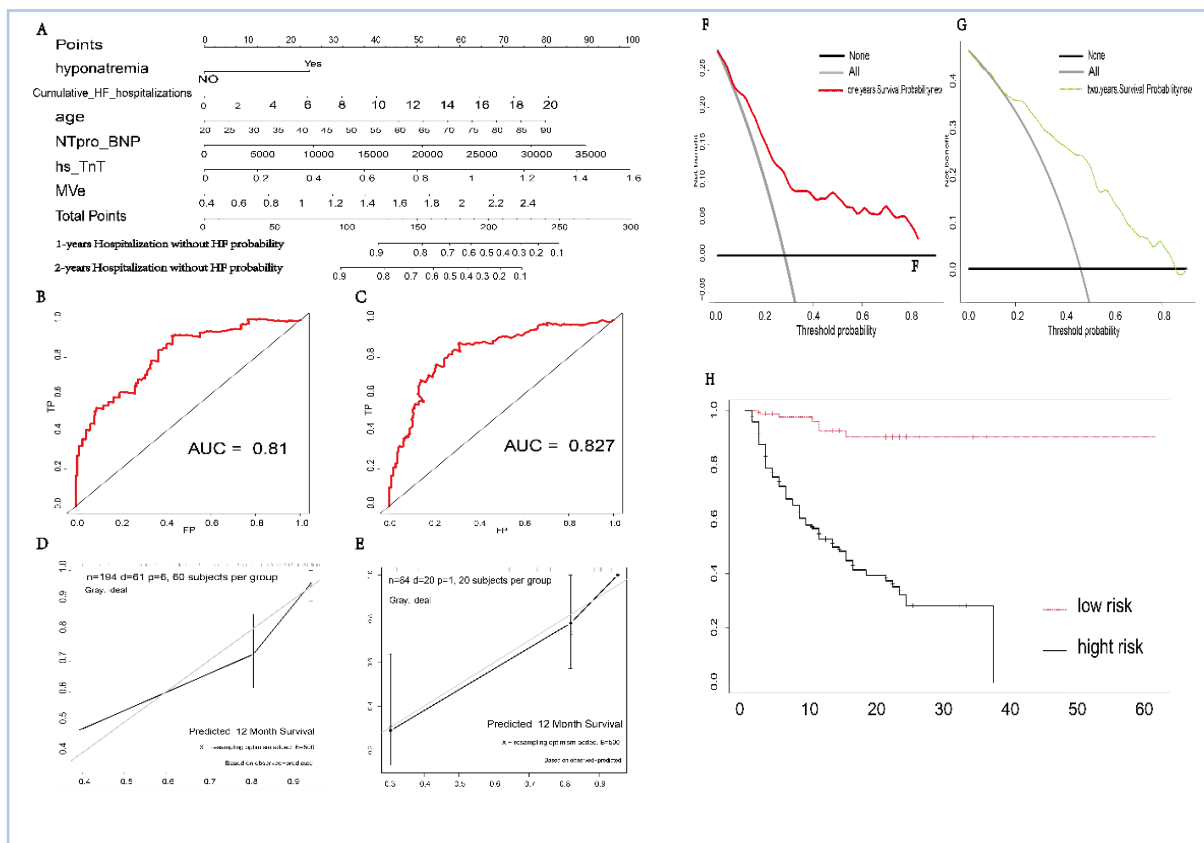


Figure 3: HF hospitalization prediction model validation

(A) Nomogram for predicting heart failure (HF) hospitalization. (B-C) AUC curve predicting a 1-year HF hospitalization. (D-E) The 1-year heart failure outcome calibration chart. Clinical decision curve analysis of the nomogram The Y axis represents the fraction surviving; the X axis represents the threshold probability; the red line represents the net

benefit of the nomogram model in the training cohort; the green line represents the net benefit of the nomogram model in the validation cohort. (F) Clinical decision curve analysis of the nomogram in the training cohort and (G) in the validation cohort. (H) Kaplan–Meier survival curve according to the risk of HF hospitalization.

Based on the death outcome prediction model, a nomogram was drawn to predict 1–2 year death outcomes. After the summing the points of the individual variables this correspond to a total score on the total points axis, which is issued to indicated the probability of 1-2-year death by drawing a line to the 1-2 year survival probability axis. The receiver operating characteristic (ROC) curves of the modeling set and the validation set were plotted, and the area under the curve and C statistics (Table 3) were calculated. The calibration curve, decision curve analysis (DCA), and Kaplan-Meier (K-M) curves were plotted (Figure 4).

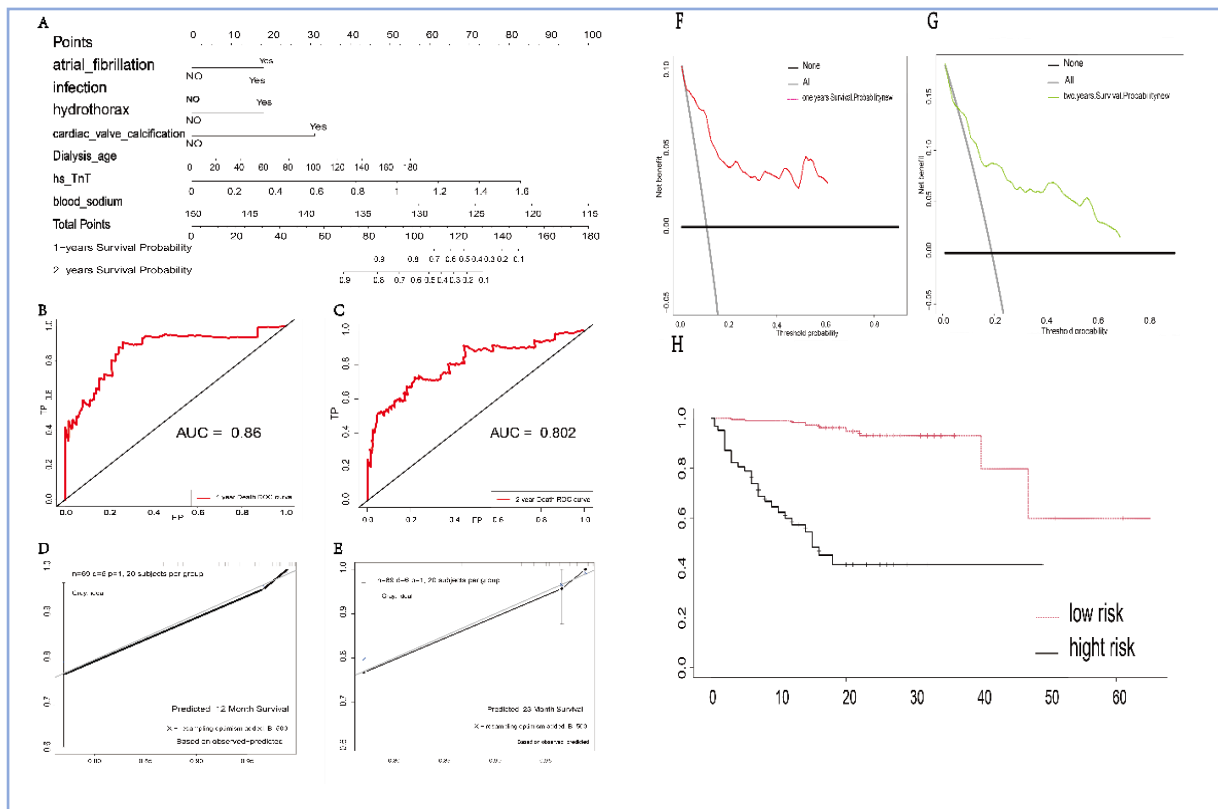


Figure 4: Verification of death prediction model

(A) Nomogram for predicting death. (B-C) AUC curve for the 1-year composite outcome. (D-E) Calibration plot for predicting 1- and 2-year heart failure outcomes. Clinical decision curve analysis of the nomogram. The Y axis represents the fraction surviving; the X axis represents the threshold probability; the red line represents the net benefit of the nomogram model in the training cohort; the green line represents the net benefit of the nomogram model

in the validation cohort. (F) Clinical decision curve analysis of the nomogram for the training cohort and (G) for the validation cohort. (H) Kaplan-Meier survival curve according to the risk of HF hospitalization.

COX regression analysis and 10-fold cross validation were performed on the training cohort and the internal and external validation sets. The results showed that the AUC values (Figures 2–4) and c-statistics of the three prediction models were remained above 0.8 (Table 3), indicating the model’s discrimination ability was good. For both internal and external validation cohort, the calibration plot showed a good consistency between the predicted HF hospitalization, mortality risk, and actual risk of the nomogram. The DCA curve indicated that the prediction model © had good clinical usability. The respective Kaplan-Meier survival curves showed that the three models could effectively distinguish high-risk and low-risk groups (Figures 2–4).

Table 3 C-statistic values of composite endpoint, HF hospitalization and death model

	Establishment of		
	the model	Model validation	
		Modeling set	Internal
Composite endpoint	0.812	0.816	0.785
HF hospitalization	0.808	0.885	0.837
Death risk	0.839	0.850	-

3.4 Risk stratification

We use variables in the compact model for risk scoring. The decision tree algorithm performs the best classification according to the critical points shown in the figure. For each '

bad ' variable, the patient increases the score by 1 point. The score range for mortality, HF hospitalization rate, and the combined endpoint is 0-3. Finally, the corresponding K-M curve is drawn according to the score. (Figure 5).

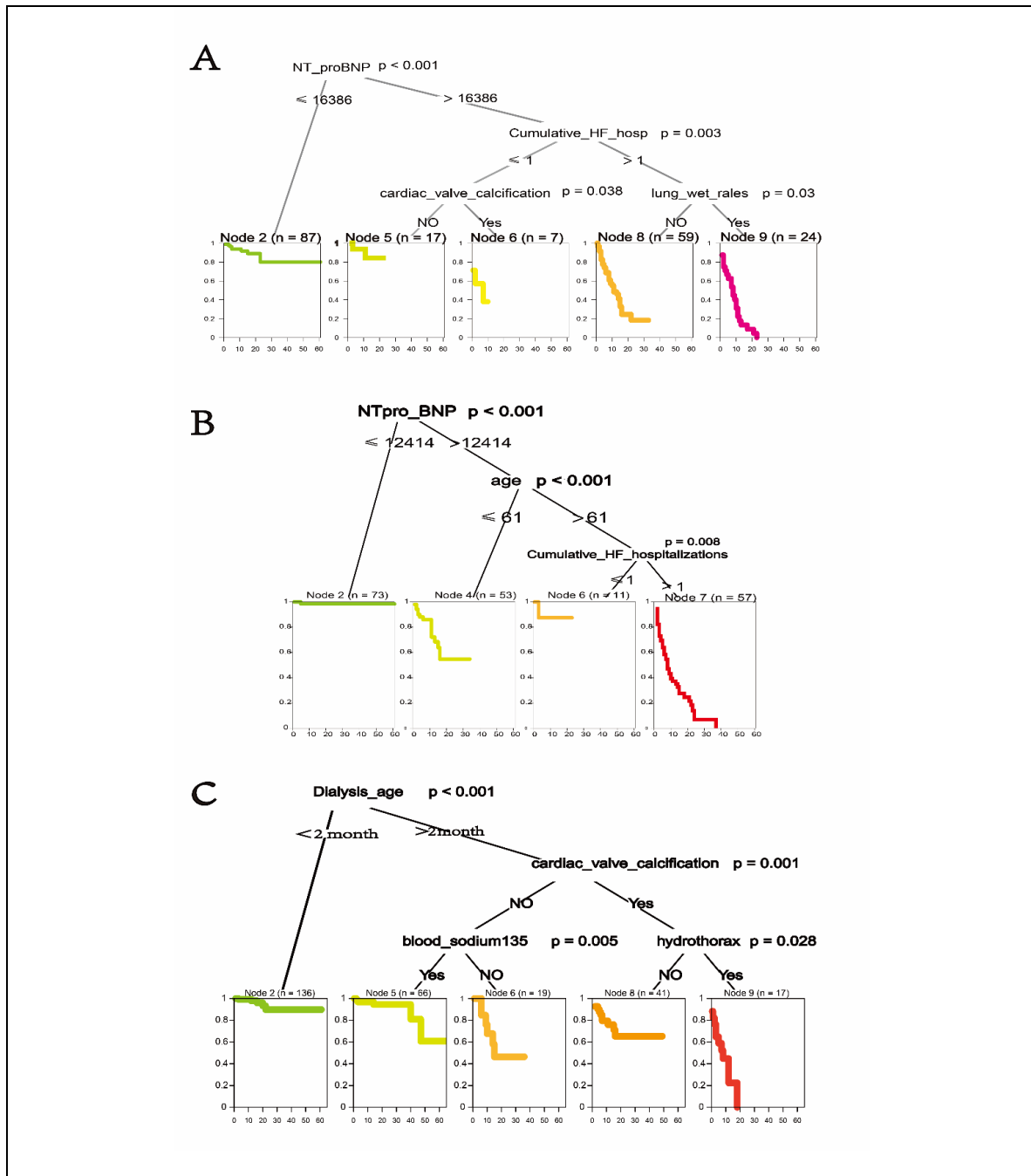


Figure 5

(A) composite outcome prediction model; (B) heart failure hospitalization prediction model; (C) death prediction model

4. Discussion

HF is a common cardiovascular disease in MHD patients, which significantly increases the hospitalization rate, mortality, and poses significant economic burden on MHD treatment. However, it is still difficult to predict the mortality and hospitalization rate of MHD patients with HF^[4-6]. Most of the published prediction models have not been externally validated and are not suitable for MHD patients. We screened different variables using 112 predictors by LASSO regression and multivariate COX regression analysis and constructed a prediction model with HF hospitalization, death, and composite outcome as outcome events. To our knowledge, this study established the first model suitable for the prediction of HF risk in patients receiving MHD. The c-statistics of the internal and external validation sets were >0.8, indicating that the model's prediction performance was good. The modeling dataset and the verification dataset were completely independent cohorts obtained from different centers, which verifies the applicability and stability of the prediction model. Secondly, because patients receiving MHD will regularly attend a hemodialysis center for treatment, we obtained follow-up information relatively accurately, thus ensuring the authenticity and reliability of the data obtained. In addition, the predictive model provided in this study can provide effective prognostic information for patients receiving MHD with only a small number of easily available clinical variables, indicating that the model is suitable for the real-life clinical setting and is convenient to use.

With regard to the choice of diagnostic cutoff value for NT-proBNP levels, there are currently different viewpoints. First, in patients undergoing MHD, the glomerular filtration rate (GFR) is reduced, NT-proBNP clearance rate decreases, and volume overload occurs. This

increased volume state causes BNP to be secreted in conjunction with increased myocardial wall relaxation. Second, a cutoff of NT-proBNP <125 pg/mL (negative exclusion) has been proposed by the latest guidelines in Europe and the United States for common HF or NT-proBNP levels >2000 pg/mL have been established by similar studies, but are not applicable to HF in patients receiving MHD. In contrast, the study by Jafri et al. suggested that the sensitivity and specificity of NT-proBNP values $\geq 112,15.2$ pg/mL for the diagnosis of HF in patients with CKD5 were 94.7% and 100%, respectively^[19]. In addition, in our study, we also diagnosed HF using the above three cut-off values and constructed a diagnostic model and found that using the NT-proBNP <125 pg/mL or >2000 pg/mL cutoff values led to overdiagnosis of HF. Furthermore, the model constructed using the criteria of NT-proBNP >11,215.2 pg/mL had better predictive power (Figure S3). In conclusion, NT-proBNP >11,215.2 pg/mL was selected as the cutoff value for the diagnosis of HF in patients receiving MHD patients for this study.

Interestingly, the predictors of the three prediction models partially overlapped. In our prediction model, hyponatremia simultaneously predicted the risk of HF hospitalization and death in MHD patients. Studies in the general population have shown that hyponatremia is a good predictor of adverse outcomes in acute or chronic HF morbidity and mortality^[14,20,21]. The study by Marroquin et al. showed that hyponatremia was associated with CVD before the transition to end-stage kidney disease (ESKD) and a high hospitalization rate after ESKD transition^[22]. The results of this study further indicated that hyponatremia is still an important predictor of HF hospitalization and composite outcomes in MHD patients. Although the predictive factor included in the mortality prediction model is serum sodium, it also indicates that lower serum sodium is associated with a higher risk of death. However, it is still not clear

whether hyponatremia directly leads to higher hospitalization rates and mortality or is a sign of potential complications (such as severe infection or lung disease). Recent studies by Marroquin et al. found that there is still a close relationship between hyponatremia and higher mortality and hospitalization rates after adjusting for comorbidities^[22]. We also obtained similar results after adjusting for comorbidities in our models (Supplementary Table 4).

Our study found that NT-proBNP appeared in both the HF hospitalization and composite outcome prediction models, while hs-cTnT appeared in both HF hospitalization and death risk prediction models. A recent meta-analysis found that NT-proBNP serum levels in patients with ESKD were positively correlated with cardiovascular events and mortality risks^[23]. In addition, we also used the best decision tree method to determine that NT-proBNP >16,386 pg/mL and >12,414 pg/mL were high-risk groups for compound outcomes and HF hospitalization in MHD patients, respectively (Figure 5). Clinically, hs-cTnT is most commonly used to determine the presence of myocardial infarction or HF-related injury in patients with acute HF (AHF). However, in the absence of myocardial ischemia, the elevation of hs-cTnT indicates the presence of strong myocardial cell injury, progressive ventricular remodeling, and an increased risk of death^[24]. Chesnaye et al. found that high levels of hs-cTnT predicted a higher risk of death and a poorer prognosis in patients with stage 4-5 CKD^[25]. This study shows that hs-cTnT is an independent predictor of death in MHD patients, and the combination of NT-proBNP and hs-cTnT could effectively predict the risk of HF hospitalization in these patients.

Interestingly, our study also found that cardiac VC was a predictive factor in both the death and compound outcome models. The study found that the prevalence of aortic and mitral valve VC in MHD patients was eight times higher than that in the general population^[26-28]. In

patients receiving MHD, hyperphosphatemia, hyperparathyroidism, increased fibroblast growth factor-23, and decreased co-receptor klotho levels are significantly associated with VC^[27]. Cardiac VC can lead to impaired valve opening and closing function and then rapidly progresses to valve stenosis. In particular, aortic valve stenosis increases blood flow resistance, causing left ventricular hypertrophy and HF leading to premature death^[26,27]. In summary, compared with the prediction model for HF in the general population, VC has a unique and good predictive value for predicting death in patients receiving MHD.

It is noteworthy that there were also significant differences in the predictors for different models. Low albumin, pulmonary rales, and a history of cerebral hemorrhage only appeared in the composite outcome prediction model, while age and MVe only appeared in the HF hospitalization model. Although E/A and E/e ratios have been repeatedly used to predict cardiovascular death and HF hospitalization in previous studies, they were not included in our model analysis due to the large differences in ultrasound reports collected from various centers^[29]. Surprisingly, this study also effectively predicted the risk of HF hospitalization in MHD patients through the simple MVe value in echocardiography, which seemed to increase the general applicability of the model. In addition, we also found that atrial fibrillation (AF), infection, dialysis age, and pleural effusion only appeared in the death prediction model. A number of studies have shown that AF is closely related to HF, which significantly increases the incidence and mortality due to CVD in MHD patients. Early screening and intervention in patients with AF can effectively improve the poor prognosis of high-risk groups^[30-34]. Recently, Evangelos et al. together with the numerical citation proposed that the factors hyponatremia, AF, and HF constitute a difficult triangle, and any side of it will affect the other side, increasing

morbidity and mortality^[35]. The death prediction model established in this study includes these three important factors, which shows that our model is suitable for the real-world clinical setting. Pleural effusion has rarely been mentioned in previous predictive models or mechanism studies. In this study, the results of logistic multivariate analysis showed that the formation of pleural effusion may be closely related to respiratory failure, pulmonary edema, HF, pulmonary infection, and AF (Supplementary Table 5), and that pleural effusion may reflect the existence of severe complications in MHD patients and may predict the occurrence of death. It is expected that future research will demonstrate its correlation with death outcomes and its mechanism.

Our research has some limitations that should be considered. First, this study was a multi-center retrospective cohort study. The clinical data derived from four hospitals in different regions. The health care system and patient treatment vary greatly, which may affect management, outcomes, and prediction. Second, in order to ensure the integrity of the data, we only collected the patient's previous hospitalization data and did not collect data with mild symptoms or remission after outpatient treatment, which may have led to a selection bias in the data, but nonetheless allowed our model to distinguish the HF hospitalization risk. Compared with prospective randomized controlled trials, we failed to include variables that are currently a focus of research attention into the analysis (such as biomarkers, genomics, and proteomics information) and did not effectively control for confounding factors. Finally, the outcome was determined by the attending physician alone and not by a ruling committee. Although, a systematic meta-analysis did not find any effect due to differences in event adjudication on the conclusions of cardiovascular outcome trials^[36].

5. Conclusion

This study developed and validated models for predicting mortality, HF hospitalization, and composite outcomes in patients receiving MHD. The models are suitable for application in MHD patients and for use at different levels of medical institutions. The prediction performances of the models were good, stable, and easy to use. In addition, the prediction models propose a simplified risk score for clinical practice to effectively stratify patients and provide effective prognostic information.

Funding

Sichuan Provincial Administration of Traditional Chinese Medicine Research Fund (2020JC0079); Sichuan Provincial Department of Science and Technology Research Special Fund (2021YFS0259); Nanchong Science and Technology Plan Project (22JCYJPT0005)

Institutional Review Board Statement

The study was conducted in accordance with the Declaration of Helsinki, and approved by the Medical Ethics Committee of Nanchong North Sichuan Medical College Second Clinical College (Nanchong Central Hospital) (No: 2022-055 and date of approval 07.18.2022) for studies involving humans.

Informed Consent Statement

Informed consent was obtained from all subjects involved in the study.

Author contributions

All the authors participated in the research and design. Wenwu Tang, Ying Zhang, and Xinzhu Yuan contributed to the statistical analysis. Wenwu Tang, Zhixin Wang, and Xiaoxia Chen provided these data. Wenwu Tang and Zhirui Qi participated in the data interpretation. Ju Zhang and Jie Li drafted the manuscript. Xishengxie and Xiaohua Yang provide supervision or guidance. Each author contributed important knowledge content in the process of drafting or revising the manuscript.

Conflicts of Interest:

No potential conflict of interest was declared.

References

- [1] Liyanage T, Ninomiya T, Jha V, et al. Worldwide access to treatment for end-stage kidney disease: a systematic review. *Lancet*. 2015; 385:1975–1982.
- [2] Cozzolino M, Mangano M, Stucchi A, et al. Cardiovascular disease in dialysis patients. *Nephrol Dial Transplant*. 2018;33(Suppl_3):iii28–iii34.
- [3] Wang F, Yang C, Long J, et al. Executive summary for the 2015 Annual Data Report of the China Kidney Disease Network (CK-NET). *Kidney Int*. 2019;95:501–505.
- [4] National Institutes of Health NIODaDa KD, Md. United States Renal Data System: 2018 USRDS Annual Data Report: Epidemiology of kidney disease in the United States. 2018:

71; 2018.

- [5] Nichols G A, Ustyugova A, Déruaz-Luyet A, et al. Health care costs by type of expenditure across eGFR stages among patients with and without diabetes, Cardiovascular disease, and heart failure. *J Am Soc Nephrol*. 2020;31:1594–1601.
- [6] Dis A J K. USRDS. Chapter 8: Cardiovascular disease in patients with ESRD: S417–S432.
- [7] Samanta R, Chan C, Chauhan V S. Arrhythmias and sudden cardiac death in end stage renal disease: Epidemiology, risk factors, and management. *Can J Cardiol*. 2019;35:1228–1240.
- [8] Lai A C, Bienstock S W, Sharma R, et al. A personalized approach to chronic kidney disease and cardiovascular disease: JACC review topic of the week. *J Am Coll Cardiol*. 2021;77:1470–1479.
- [9] Weiss G, Theurl I, Eder S, et al. Serum hepcidin concentration in chronic haemodialysis patients: associations and effects of dialysis, iron and erythropoietin therapy. *Eur J Clin Invest*. 2009;39:883–890.
- [10] Ouwerkerk W, Voors A A, Zwinderman A H. Factors influencing the predictive power of models for predicting mortality and/or heart failure hospitalization in patients with heart failure. *JACC Heart Fail*. 2014;2:429–436.
- [11] Simpson J, Jhund P S, Lund L H, et al. Prognostic models derived in PARADIGM-HF and validated in ATMOSPHERE and the Swedish Heart Failure Registry to predict mortality and morbidity in chronic heart failure. *JAMA Cardiol*. 2020;5: 432–441.

- [12] Bradley J, Schelbert E B, Bonnett L J, et al. Predicting hospitalisation for heart failure and death in patients with, or at risk of, heart failure before first hospitalisation: a retrospective model development and external validation study. *Lancet Digit Health*. 2022;4:e445–e454.
- [13] Gotta V, Tancev G, Marsenic O, et al. Identifying key predictors of mortality in young patients on chronic haemodialysis-a machine learning approach. *Nephrol Dial Transplant*. 2021;36:519–528.
- [14] Voors A A, Ouwerkerk W, Zannad F, et al. Development and validation of multivariable models to predict mortality and hospitalization in patients with heart failure[J]. *Eur J Heart Fail*, 2017, 19(5): 627-634.
- [15] Sauerbrei W, Royston P, Binder H. Selection of important variables and determination of functional form for continuous predictors in multivariable model building. *Stat Med*. 2007;26:5512–5528.
- [16] Pourhoseingholi M A, Baghestani A R, Vahedi M. How to control confounding effects by statistical analysis. *Gastroenterol Hepatol Bed Bench*. 2012;5:79–83.
- [17] Eom B W, Ryu K W, Nam B H, et al. Survival nomogram for curatively resected Korean gastric cancer patients: multicenter retrospective analysis with external validation. *PLoS One*. 2015;10:e0119671.
- [18] Vickers A J, Elkin E B. Decision curve analysis: a novel method for evaluating prediction models. *Med Decis Making*. 2006;26:565–574.

- [19] Jafri L, Kashif W, Tai J, et al. B-type natriuretic peptide versus amino terminal pro-B type natriuretic peptide: selecting the optimal heart failure marker in patients with impaired kidney function. *BMC Nephrol*, 2013, 14: 117.
- [20] Gheorghiade M, Abraham W T, Albert N M, et al. Relationship between admission serum sodium concentration and clinical outcomes in patients hospitalized for heart failure: an analysis from the OPTIMIZE-HF registry. *Eur Heart J*. 2007;28:980–988.
- [21] Khazanie P, Heizer G M, Hasselblad V, et al. Predictors of clinical outcomes in acute decompensated heart failure: acute study of clinical effectiveness of nesiritide in decompensated heart failure outcome models. *Am Heart J*. 2015;170:290–297.
- [22] Marroquin M V, Sy J, Kleine C E, et al. Association of pre-ESKD hyponatremia with post-ESKD outcomes among incident ESKD patients. *Nephrol Dial Transplant*. 2022;37:358–365.
- [23] Harrison T G, Shukalek C B, Hemmelgarn B R, et al. Association of NT-proBNP and BNP with future clinical outcomes in patients with ESKD: a systematic review and meta-analysis. *Am J Kidney Dis*. 2020;76:233–247.
- [24] Aimo A, Januzzi J L, Jr., Vergaro G, et al. Prognostic value of high-sensitivity troponin T in chronic heart failure: an individual patient data meta-analysis. *Circulation*. 2018;137:286–297.
- [25] Chesnaye N C, Al-Sodany E, Szummer K, et al. Association of longitudinal high-sensitivity troponin T with mortality in patients with chronic kidney disease. *J Am Coll*

Cardiol. 2022;79:327–336.

- [26] Blaser M C, Kraler S, Lüscher T F, et al. Multi-omics approaches to define calcific aortic valve disease pathogenesis. *Circ Res.* 2021;128:1371–1397.
- [27] Ureña-Torres P, D'marco L, Raggi P, et al. Valvular heart disease and calcification in CKD: more common than appreciated. *Nephrol Dial Transplant.* 2020;35:2046–2053.
- [28] Moshar S, Bayesh S, Mohsenikia M, et al. The association of calcium-phosphorus product with the severity of cardiac valves failure in patients under chronic hemodialysis. *Cardiol Res.* 2016;7:80–83.
- [29] Mitter S S, Shah S J, Thomas J D. A Test in Context: E/A and E/e' to Assess Diastolic Dysfunction and LV Filling Pressure. *J Am Coll Cardiol*, 2017, 69(11): 1451-1464.
- [30] Ding W Y, Gupta D, Wong C F, et al. Pathophysiology of atrial fibrillation and chronic kidney disease. *Cardiovasc Res.* 2021;117:1046–1059.
- [31] Bansal N, Xie D, Tao K, et al. Atrial fibrillation and risk of ESRD in adults with CKD. *Clin J Am Soc Nephrol.* 2016;11:1189–1196.
- [32] Farmakis D, Chrysohoou C, Giamouzis G, et al. The management of atrial fibrillation in heart failure: an expert panel consensus. *Heart Fail Rev.* 2021;26:1345–1358.
- [33] Zimmerman D, Sood M M, Rigatto C, et al. Systematic review and meta-analysis of incidence, prevalence and outcomes of atrial fibrillation in patients on dialysis. *Nephrol Dial Transplant.* 2012;27:3816–3822.

[34] Brundel B, Ai X, Hills M T, et al. Atrial fibrillation. *Nat Rev Dis Primers*, 2022, 8(1): 21.

[35] Oikonomou E, Mystakidi V C, Tousoulis D. Hyponatremia in patients with atrial fibrillation and heart failure: The difficult triangle. *Hellenic J Cardiol*. 2019;60:122–123.

[36] Pogue J, Walter S D, Yusuf S. Evaluating the benefit of event adjudication of cardiovascular outcomes in large simple RCTs. *Clin Trials*. 2009;6:239–251.

List of supplementary materials:

Table S1:Single factor COX analysis

Figure S1: HR values of single-factor COX regression analysis

Figure S2:LASSO Regression analysis

Table S2:Variable screening process

Table S3:Multivariate COX analysisMulti-factor Cox model predictor distribution comparison

Figure S3:Diagnosis of heart failure and construction of logistic models according to different criteria

Table S4:Association of hyponatremia with heart failure hospitalization and death after adjustment for comorbidities

Table S5:A logistics model with pleural effusion as an outcome event and multiple comorbidities as predictors was constructed

Table S1 Single factor COX analysis

	Composite outcome			HF hospitalization			Death		
	HR	95.0% CI	P-value	HR	95.0% CI	P-value	HR	95.0% CI	P-value
Sex	0.677	0.453-1.01	0.056	0.614	0.385-0.979	0.04			
Vascular Access									
Left upper extremity venous fistula			0.079						
Right upper extremity venous fistula	1.425	0.35-5.808	0.621						
Right internal jugular vein	1.906	1.08-3.365	0.026						

Nephritis (when entering dialysis)	0.395	0.253-0.617	< 0.001			
Labor breathing difficulties or paroxysmal night breathing difficulties	1.566	1.014-2.42	0.043	1.709	1.068-2.735	0.025
Pulmonary rale	2.17	1.445-3.258	< 0.001	2.68	1.645-4.367	< 0.001
Positive jugular vein filling or hepatic neck reflux sign				1.888	1.014-3.514	0.045
Coronary heart disease	1.476	0.945-2.305	0.087	2.246	1.38-3.657	0.001
Encephalorrhagi a	3.546	1.288-9.766	0.014		5.939	2.007-17.573 0.001

Atrial fibrillation	1.717	1.026-2.873	0.04				2.433	1.228-4.821	0.011
Diabetes	1.692	1.134-2.525	0.01				2.07	1.117-3.836	0.021
Peripheral neuropathy, autonomic neuropathy	1.757	1.131-2.731	0.012						
Cumulative types of diabetic complications				1.256	1.061-1.486	0.008			
Pulmonary infection	1.823	1.22-2.724	0.003	1.634	1.054-2.533	0.028			
COPD	1.584	0.926-2.712	0.093	1.818	1.013-3.263	0.045	1.894	0.91-3.943	0.088
Emphysema or pulmonary bullae	1.567	0.948-2.591	0.08	1.853	1.048-3.276	0.034			

Gallbladder									
stones and									
after	1.557	0.93-2.607	0.092						
cholecystecto									
my									
Infection	2.039	1.333-3.119	0.001				2.762	1.422-5.364	0.003
Hydrothorax	1.948	1.305-2.907	0.001	2.495	1.543-4.035	< 0.001	2.299	1.267-4.175	0.006
Abdominal and									
pelvic effusion	1.834	1.108-3.036	0.018	2.708	1.503-4.879	0.001	3.061	1.54-6.084	0.001
Aortic valve									
calcification	1.74	1.143-2.649	0.01	1.823	1.132-2.936	0.014			
Aortic or mitral									
valve	1.877	1.245-2.828	0.003	1.758	1.097-2.818	0.019	3.406	1.867-6.212	<
calcification									0.001
Mitral reflux				1.97	1.174-3.305	0.01			

Tricuspid regurgitation				2.155	1.317-3.526	0.002			
Pulmonary valve regurgitation	1.792	1.016-3.161	0.044	2.135	1.207-3.777	0.009			
Pulmonary artery hypertension	0.644	0.422-0.983	0.041	2.135	1.207-3.777	0.009			
Left ventricular diastolic dysfunction				2.912	1.565-5.419	0.001			
Right ventricular enlargement							4.203	1.005-17.577	0.049
Hyponatremia	1.822	1.22-2.72	0.003	1.941	1.216-3.097	0.005			
Age	1.033	1.017-1.048	< 0.001	1.031	1.012-1.05	0.001	1.04	1.016-1.065	0.001

Pulse pressure	1.008	0.999-1.017	0.089					
Dialysis times (weekly)	0.541	0.312-0.936	0.028	2.056	1.157-3.654	0.014		
Dialysis duration (h)	0.436	0.237-0.803	0.008	0.334	0.169-0.658	0.002		
Dialysis age (months)	1.006	0.999-1.013	0.056				1.008	1.001-1.015 0.036
Cumulative heart failure hospitalization s	1.109	1.057-1.165	< 0.001	1.084	1.042-1.129	< 0.001		
Cumulative heart failure cumulative total hospitalization days	1.008	1.005-1.012	< 0.001	1.011	1.007-1.015	< 0.001		

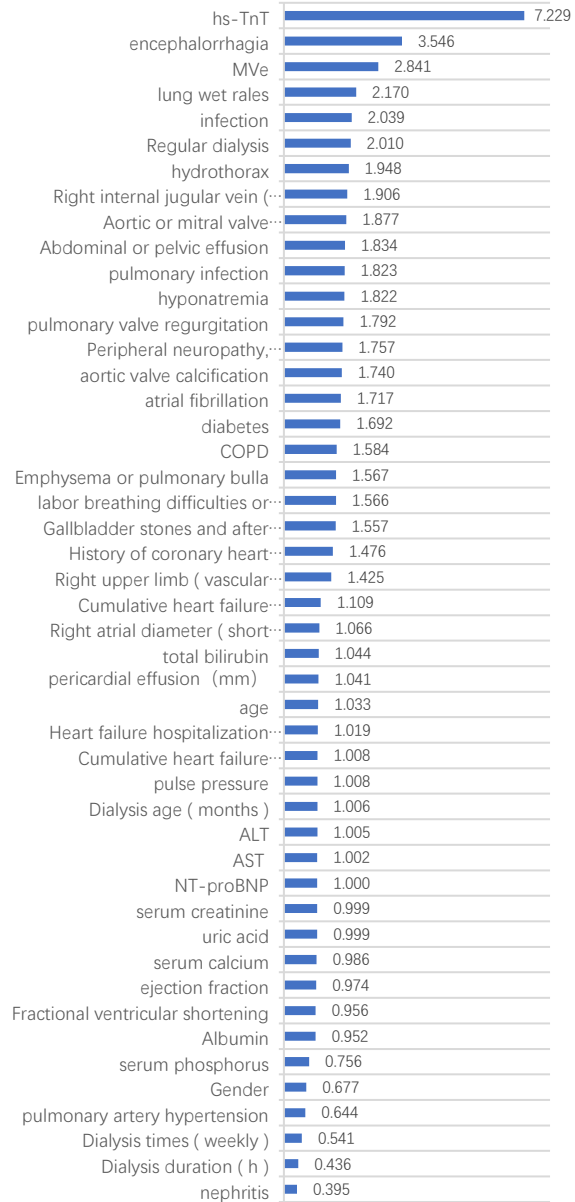
Hospitalization									
days (initial events)	1.019	0.999-1.0389	0.063				1.005	1.000-1.010	0.041
NT-proBNP	1	1.001-1.001	< 0.001	1.000	1.000-1.000	< 0.001	1.000	1.000-1.000	< 0.001
hs-TnT	7.229	3.178-16.447	< 0.001	12.907	5.344-31.175	< 0.001	12.94 2	4.706-35.597	< 0.001
Albumin	0.952	0.918-0.988	0.009						
Uric acid	0.999	0.997-1	0.064						
Serum creatinine	0.999	0.998-0.999	0.001				0.999	0.998-1.000	0.047
AST	1.002	1-1.003	0.001						
ALT	1.005	1-1.01	0.019						
Total bilirubin	1.044	1.015-1.075	0.003						
Serum sodium				0.946	0.905-0.989	0.014	0.917	0.87-0.966	0.001

Serum calcium	0.986	0.516-1.883	0.965			
Serum phosphorus	0.756	0.571-1.001	0.051	0.717	0.516-0.998	0.048
Pericardial effusion (mm)	1.041	1.006-1.076	0.021			
Left ventricular diameter				1.045	1.004-1.087	0.03
Internal diameter of left atrium				1.062	1.034-1.09	< 0.001
Right ventricular internal diameter				1.089	1.05-1.129	< 0.001

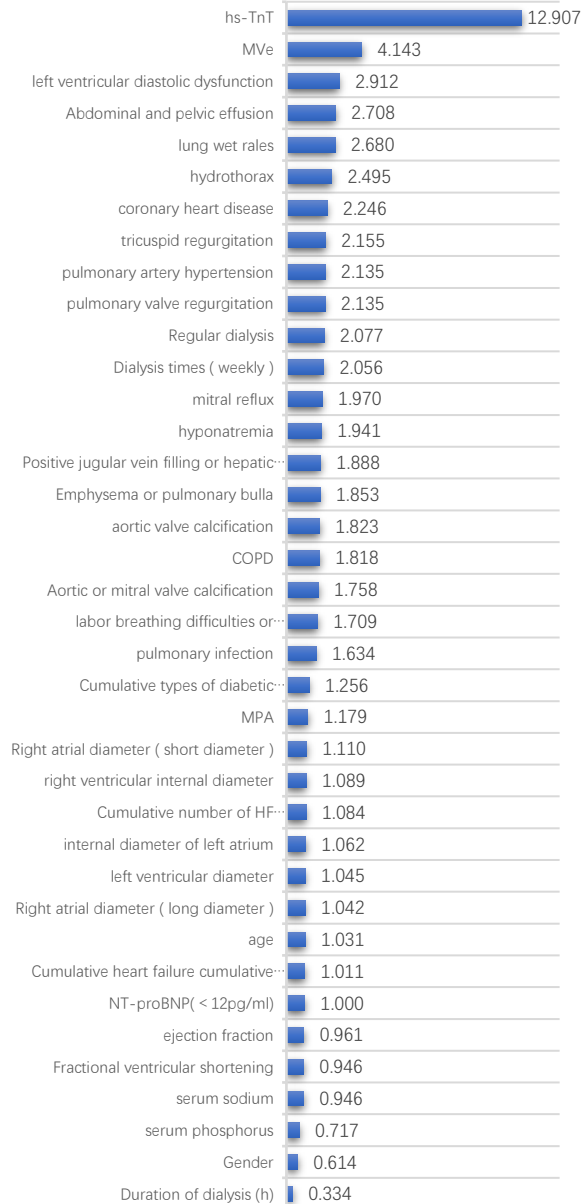
RA right atrial diameter (short diameter)	1.066	1.027-1.107	0.001	1.11	1.066-1.156	< 0.001	1.075	1.023-1.13	0.005
RA right atrial diameter (long diameter)				1.042	1.002-1.083	0.039			
Main pulmonary artery				1.179	1.094-1.27	< 0.001			
MVe (mitral valve echo)	2.841	1.573-5.131	0.001	4.143	2.216-7.745	< 0.001			
FS (fractional shortening)	0.956	0.93-0.982	0.001	0.946	0.92-0.974	< 0.001	0.959	0.923-0.996	0.03
EF (ejection fraction)	0.974	0.957-0.991	0.004	0.961	0.942-0.98	< 0.001	0.973	0.948-0.999	0.039

Figure S1: HR values of single-factor COX regression analysis

Composite outcome



HF hospitalization



Death

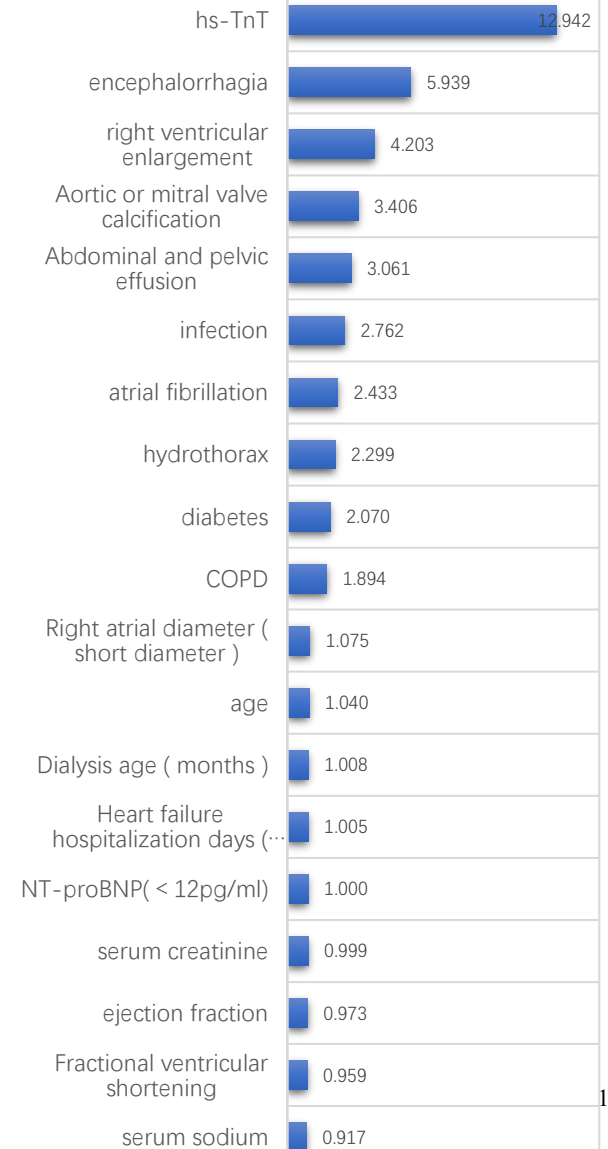
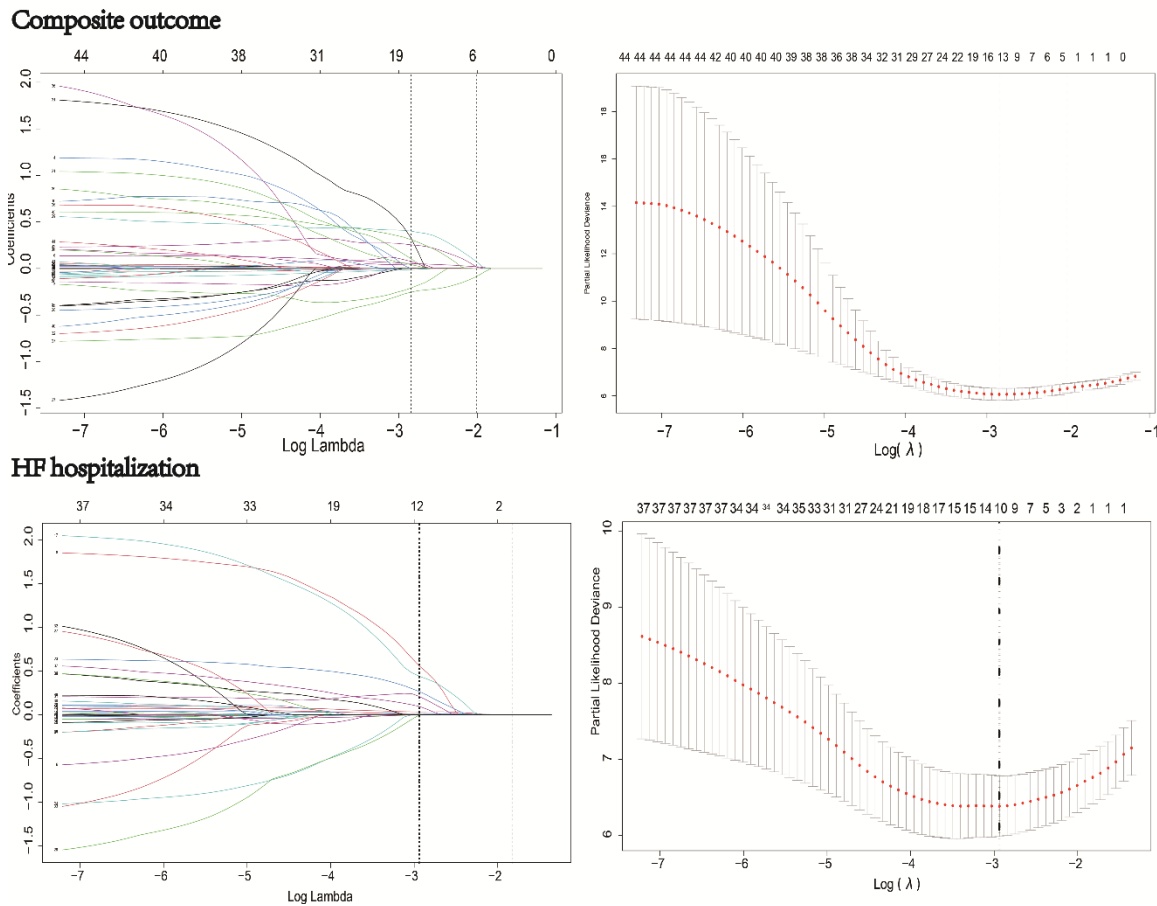


Figure S2:LASSO Regression analysis



Death outcome: After single-factor COX analysis, the predictors of death outcome entered the multiple regression equation. A multivariate COX stepwise regression (forward method) was directly performed, and the model was constructed.

Table S2:Variable screening process

		Multivariate cox
COX univariate		regression
analysis	Lasso regression	analysis

Composite			
endpoint	45	16	7
HF			
hospitalization	38	10	6
Death	19	-	7

Note: Although a complete model can be constructed after LASSO regression, in order to reduce overfitting, this study chose COX multivariate stepwise regression to further compress the variables.

Table S3: Multi-factor Cox model predictor distribution comparison

	Composite outcome			HF hospitalization			Death		
	HR	95.0% CI	p	HR	95.0% CI	P	HR	95.0% CI	p
Age				1.02 8	1.005- 1.052	0.01 8			
Dialysis age							1.015	1.004- 1.026	0.00 6
Cumulative HF hospitalizations	1.14 4	1.056- 1.239	0.00 1	1.09 9	1.024- 1.179	0.00 9			
Lung moist rales	1.95 8	1.226- 3.128	0.00 5						
Hydrothorax							2.409	1.213- 4.785	0.01 2
Infection							2.163	1.057- 4.428	0.03 5
History of cerebral hemorrhage	5.23 5	1.539- 17.803	0.00 8						
Atrial fibrillation							2.409	1.107- 5.241	0.02 7
Aortic or mitral valve calcification	1.56	0.934- 2.606	0.08 9				4.466	2.214- 9.008	0.00 0
Hyponatremia	2.08 8	1.298- 3.360	0.00 2	1.77 5	1.056- 2.981	0.03 0			
Serum sodium							0.871	0.812- 0.934	0.00 0
NT-proBNP ×0.01	1.00 7	1.005- 1.010	0.00 0	1.00 6	1.003- 1.009	0.00 0			
Hs-TnT				3.79 2	1.150- 12.507	0.02 9	10.63 6	2.988- 37.856	0.00 0
Albumin	0.94 7	0.900- 0.997	0.03 8						
MVe				2.40 1	1.091- 13.052	0.03 0			

Figure S3:Diagnosis of heart failure and construction of logistic models according to

different criteria:

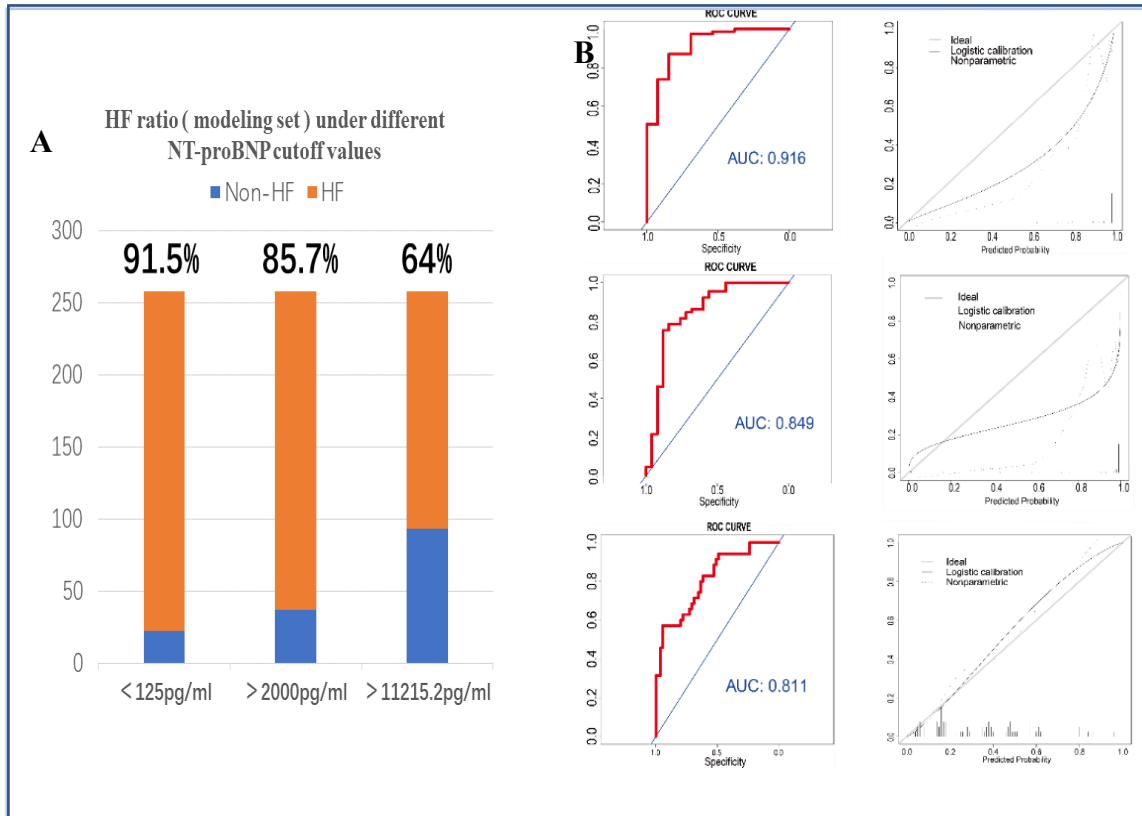


Figure S3:

Diagnosis of heart failure and construction of logistic models according to different criteria: (A) The percentage of HF diagnosed with three different NT-proBNP cutoff values was significantly different. (B) Different NT-proBNP (from top to bottom: < 125 pg/mL, > 2000 pg/mL, > 11 215.2 pg/mL) cut-off values were used to diagnose heart failure, construct a prediction model, and draw a calibration chart. It was suggested that the model constructed with NT-proBNP > 11215.2 pg/mL was clinically realistic.

Table S4: Association of hyponatremia with heart failure hospitalization and death after adjustment for comorbidities

	Total Crowd (Modeling Set)					
	composite outcome		HF hospitalization		death	
	OR	P value	OR	P value	OR	P value
Unadjusted	1.822 (1.220, 2.720)	0.003	1.696 (1.094, 2.629)	0.018	2.891 (1.486, 5.625)	0.002
adjusted I	1.877 (1.222, 2.881)	0.004	1.711 (1.069, 2.739)	0.025	3.590 (1.757, 7.335)	< 0.001
adjusted II	1.673 (1.045, 2.678)	0.032	1.608 (0.953, 2.714)	0.075	2.664 (1.253, 5.663)	0.011

Adjusted I : Gender, Age, BMI, Pulse, Pulse pressure, EF, NTpro-BNP

Adjustment II : Gender, Age, BMI, Pulse, Pulse pressure difference, EF, NTpro-BNP, Diabetes, Pulmonary Infection, Coronary heart disease, Cerebral hemorrhage, Fatty liver, Cirrhosis

Table S5:A logistics model with pleural effusion as an outcome event and multiple comorbidities as predictors was constructed.

	Logistics single factor analysis			Logistics multi-factor analysis		
	OR	95%(CI)	p value	OR	95%(CI)	p value
Coronary heart disease	0.805	(0.414-1.567)	0.523			
Cerebral infarction or insufficient blood supply	1.348	(0.71-2.562)	0.361			
Encephalorrhagia	0.824	(0.157-4.34)	0.82			
Atrial fibrillation	3.946	(1.813-8.59)	0.001	3.363	(1.462-7.731)	0.004
Metabolic acidosis	1.717	(1.015-2.902)	0.044			
Urinary tract infection	0.679	(0.179-2.5761)	0.569			
Abnormal thyroid function	0.549	(0.149-2.022)	0.367			
Diabetes	1.015	(0.601-1.715)	0.955			
Diabetic Retinopathy	0.944	(0.502-1.775)	0.858			

Lung infection	2.95	(1.723-5.051)	0	2.365	(1.315-4.256)	0.004
COPD	1.587	(0.737-3.416)	0.238			
Respiratory failure or pulmonary edema	6.84	(1.801-25.98)	0.005	5.477	(1.364-21.997)	0.017
Bronchitis, bronchiectasis	1.334	(0.578-3.081)	0.499			
Emphysema or pulmonary aspergillosis	1.457	(0.7-3.032)	0.314			
Silicosis, pneumoconiosis, lung destruction, pulmonary fibrosis	4.3	(0.772- 23.965)	0.096			
Fatty liver or cirrhosis	0.859	(0.36-2.051)	0.732			
Gallbladder stones and post cholecystectomy	1.042	(0.506-2.149)	0.911			
Peptic ulcers, inflammation of the digestive tract	0.913	(0.5145-1.62)	0.756			
Gastrointestinal bleeding	0.461	(0.168-1.269)	0.134			
Abnormal blood clotting, thrombocytopenia	1.596	(0.535-4.758)	0.401			
Immunodeficiency	0.512	(0.056-4.654)	0.552			
Tumors	2.85	(0.623- 13.035)	0.177			
Hyponatremia	0.857	(0.505-1.453)	0.566			
HF	5.915	(2.936- 11.915)	< 0.001	4.312	(2.073-8.967)	< 0.001