

Predicting Functional Dependency in Patients with Disorders of Consciousness: A TBI-Model Systems and TRACK-TBI Study

Samuel B. Snider MD^{1,2}, Nancy R. Temkin PhD^{3,4}, Jason Barber MS³, Brian L. Edlow MD^{2,5,6}, Joseph T. Giacino PhD^{2,7}, Flora M. Hammond MD⁸, Saef Izzy MD^{1,2}, Robert G. Kowalski, MBBCh, MS⁹, Amy J. Markowitz JD¹⁰, Craig A. Rovito MD^{2,7}, Shirley L. Shih MD^{2,7}, Ross D. Zafonte DO^{2,7}, Geoffrey T. Manley MD PhD^{10,11}, Yelena G. Bodien PhD^{2,5,7} and the TRACK-TBI investigators.

SUPPLEMENTARY MATERIAL

Affiliations

- 1 Division of Neurocritical Care, Department of Neurology, Brigham and Women’s Hospital, Boston, MA, USA
- 2 Harvard Medical School, Boston, MA, USA
- 3 Department of Neurological Surgery, University of Washington, Seattle, Washington, USA.
- 4 Department of Biostatistics, University of Washington, Seattle, Washington, USA.
- 5 Center for Neurotechnology and Neurorecovery and Department of Neurology, Massachusetts General Hospital, Boston, MA, USA
- 6 Athinoula A. Martinos Center for Biomedical Imaging, Massachusetts General Hospital, Charlestown, MA, USA
- 7 Department of Physical Medicine and Rehabilitation, Spaulding Rehabilitation Hospital, Boston, MA USA
- 8 Department of Physical Medicine and Rehabilitation, Indiana University School of Medicine, Indianapolis, IN, USA
- 9 Departments of Neurosurgery and Neurology, University of Colorado School of Medicine, Aurora CO, USA
- 10 Department of Neurological Surgery, UCSF, San Francisco, CA USA
- 11 Brain and Spinal Cord Injury Center, Zuckerberg San Francisco General Hospital and Trauma Center, San Francisco, CA USA

Table of Contents

Supp. Table 1: TBI-MS Derivation vs Testing Cohorts.....	2
Supp. Table 2: TBI-MS Univariate Association with Dependency ($p \leq 0.1$)	4
Supp. Table 3: TBI-MS Multivariate Dependency Prediction Model.....	5
Supp. Table 4: “TRACK-Aligned” Dependency Prediction Model.....	6
Supp. Table 5: TRACK-TBI External Validation Cohort Characteristics.....	7
Supp. Table 6: Comparison of Subjects with Comparable Lengths of Stay in TBI-MS	8
and TRACK-TBI	
Supp. Figure 1: Distribution of Acute Care Lengths of Stay.....	9
Supp. Figure 2: Track-TBI (Validation) Cohort Flowchart.....	10
Supp. Figure 3: Relative Propensity Model Influence of TBI-MS Covariates.....	11
Supp. Figure 4: Exposure Variable Collinearity	12
Supp. Figure 5: Exposure Variable Missingness.....	13
Supp. Figure 6: Performance of “Track-Aligned” Model in Testing Sample.....	14
Supp. Figure 7: Association Between DRS _{Motor} and Primary Outcome Varies based on Days to First Post-Injury Assessment	15
Supp. Figure 8: Dependency <i>Only</i> Prediction Model.....	16
Variable Definitions.....	17-22

Supplementary Table 1: TBI-MS Derivation vs Testing Cohorts			
	Model Derivation (N = 1226)	Model Testing (N = 306)	P value
DEMOGRAPHICS			
Age; Mean (SD)	40 (19)	42 (20)	0.1
Sex Male; N (%)	946 (77)	224 (73)	0.1
Race White; N (%)	864 (71)	197 (64)	0.05
<u>Marital status; N (%)</u>			
Single	607 (50)	140 (46)	0.07
Married	388 (32)	117 (38)	
Other	230 (19)	48 (16)	
<u>Education; N (%)</u>			
< HS	341 (28)	94 (31)	0.8
HS diploma/GED	324 (26)	78 (26)	
Some college	190 (16)	49 (16)	
Bachelor's Degree	219 (18)	51 (17)	
<u>Employment; N (%)</u>			
Competitively Employed	647 (53)	153 (5)	0.1
Student	79 (6)	13 (4)	
Unemployed	343 (28)	99 (32)	
<u>Housing; N (%)</u>			
Private Home	1201 (98)	299 (98)	0.8
Other	23 (2)	7 (2)	
CLINICAL CHARACTERISTICS			
<u>Injury Mechanism; N (%)</u>			
High-Velocity	707 (58)	161 (53)	0.2
Fall-related	292 (24)	87 (28)	
Low-Velocity/Other	223 (18)	57 (19)	
Injury Year; Mean (SD)	2010 (6)	2010 (6)	0.7
ED GCS _{Verbal} < 3; N (%) ^a	332 (27)	84 (28)	1
ED GCS _{Motor} < 5; N (%) ^b	574 (47)	123 (40)	0.04
ED GCS _{Eye} < 2; N (%) ^b	557 (45)	118 (39)	0.03
Intubated; N (%)	673 (55)	151 (49)	0.09
Craniectomy; N (%)	180 (18)	47 (19)	0.8
<u>CT Compression; N (%)</u>			
None	554 (55)	137 (55)	0.8
Cisterns present/MLS<5mm	108 (11)	23 (9)	
Cisterns absent/MLS>5mm	353 (35)	90 (36)	
<u>Intracranial Hypertension; N (%)</u>			
No ICP spikes or unmonitored	700 (57)	182 (60)	0.7
ICP ≥ 20 on one day	184 (15)	47 (15)	
ICP ≥ 20 repeatedly or sustained	322 (26)	73 (24)	
SDH/SAH; N (%)	1023 (88)	241 (82)	0.009
EDH; N (%)	137 (12)	26 (9)	0.2
IVH; N (%)	473 (41)	127 (43)	0.5
<u>Contusions</u>			
Frontal; N (%)	727 (59)	182 (60)	0.9
Temporal; N (%)	554 (45)	127 (42)	0.2
Parietal; N (%)	266 (22)	63 (21)	0.7
Occipital; N (%)	106 (9)	20 (7)	0.3
Non-cortical; N (%)	364 (30)	102 (33)	0.3
Total #; Mean (SD)	2 (2)	2 (2)	0.3

Days post injury [<i>first assessment</i>] ^a ; Mean (SD)	25 (12)	24 (11)	0.2
<u>DRS [<i>first assessment</i>]; Median (IQR)</u>			
Total Score	22 (4)	22 (4)	0.4
DRS _{Function}	5 (0)	5 (0)	0.6
DRS _{Eye}	0 (1)	0 (1)	0.4
DRS _{Motor}	1 (1)	1 (1)	0.7
Rehab LOS; Mean (SD)	49 (46)	51 (45)	0.6
OUTCOMES			
DRS [1-year]; Median (IQR)	5 (7)	5 (7)	0.2
GOSE [1-year]; Median (IQR)	4 (3)	4 (3)	0.5
Dead or DRS-Depend +; N (%)	325 (27)	81 (27)	1

a = in patient who is not intubated

b = in patient not receiving sedation/paralytic

*First assessment occurs at admission to rehabilitation

Abbreviations: SD = Standard Deviation; IQR = Interquartile Range; GED = General Educational Development Test; MLS = Midline Shift; SDH = Subdural Hemorrhage; SAH = Subarachnoid Hemorrhage; EDH = Epidural Hemorrhage; IVH = Intraventricular Hemorrhage; DRS = Disability Rating Scale; GOSE = Glasgow Outcome Scale Extended

Supplementary Table 2: TBI-MS Univariate Association with Dependency ($p \leq 0.1$)		
Variable	Univariate OR	P value
<u>DRS [first assessment]*</u>		
<i>Eye sub-score</i>		
No eye opening	4.8 [2.8, 8.3]	< 0.0001
Eyes open with nox stim	1.9 [1.3, 2.8]	0.0007
<i>Total score category</i>		
Extreme VS	4.4 [3.1, 6.3]	< 0.0001
VS	1.7 [1.3, 2.3]	0.0003
<i>Motor sub-score</i>		
Flex/extend/no movement	3.5 [2.5, 4.8]	< 0.0001
Withdrawal	1.9 [1.4, 2.7]	< 0.0001
<i>Function sub-score</i>		
Totally dependent: 24 hr care	2.8 [1.9, 4.1]	< 0.0001
<i>Toilet sub-score</i>		
No awareness of continence	2.2 [1.6, 3.2]	< 0.0001
<u>Demographics</u>		
Age \geq 55	3.0 [2.2, 3.9]	< 0.0001
Pre-Injury Employment: Unemployed vs employed	2.2 [1.7, 2.9]	< 0.0001
Housing Status: No private home vs private home	2.1 [0.9, 4.6]	0.07
Pre-Injury Education: HS Diploma vs < HS	1.5 [1.1, 2.1]	0.02
<u>Clinical Characteristics</u>		
IVH	1.8 [1.4, 2.4]	< 0.0001
SDH or SAH	2.0 [1.2, 3.2]	0.008
Severe brain swelling: Cisterns absent or $MLS \geq 5mm$	1.7 [1.2, 2.2]	0.0008
Non-Cortical Contusion	1.6 [1.2, 2.1]	0.002
Injury Mechanism: Fall vs Low-Velocity	1.5 [1.1, 2.2]	0.02
Parietal Contusion	1.3 [1.0, 1.8]	0.08
Craniectomy	1.3 [1.0, 1.9]	0.08
Sustained Intracranial Hypertension	1.4 [1.0, 1.8]	0.04
Total Contusion #	1.1 [1.0, 1.2]	0.01
Injury Mechanism: High Velocity vs Low-Velocity	0.7 [0.5, 1.0]	0.04
Followed cmds [within 5 days of injury]	0.6 [0.4, 0.8]	0.001

*First assessment occurs at admission to rehabilitation

Abbreviations: DRS = Disability Rating Scale; Flex = flexion; IVH = intraventricular hemorrhage; cmds = commands; HS = High School; nox = noxious; hr = hour; VS = Vegetative State

Supplementary Table 3: TBI-MS Multivariate Dependency Prediction Model		
Variable	aOR	P value
Age ≥ 55	4.3 [3.0, 6.1]	< 0.0001
<u>DRS_{Motor} [first assessment]*:</u> <i>Flexion/extension/no movement</i>	3.4 [2.4, 4.9]	< 0.0001
<i>Withdrawal</i>	1.7 [1.2, 2.4]	0.002
<u>DRS_{Function} [first assessment]:</u> <i>Totally dependent: 24 hr care</i>	2.6 [1.7, 4.0]	< 0.0001
<u>Pre-Injury Employment:</u> <i>Unemployed</i>	2.1 [1.5, 2.9]	< 0.0001
<i>Student</i>	0.7 [0.4, 1.2]	0.2
Underwent Craniectomy	1.8 [1.3, 2.5]	0.001
IVH	1.6 [1.2, 2.1]	0.002
Non-Cortical Contusion	1.7 [1.2, 2.4]	0.002
Followed cmds [within 5 days of injury]	0.5 [0.3, 0.7]	0.0003

*First assessment occurs at admission to rehabilitation

Abbreviations: DRS: Disability Rating Scale; IVH: intraventricular hemorrhage; cmds: commands; hr: hour

Supplementary Table 4: “TRACK-Aligned” Dependency Prediction Model		
Variable	aOR	P value
Age ≥ 55	5.0 [3.6, 7.0]	< 0.0001
<u>DRS_{Motor} [first assessment]*:</u> <i>Flexion/extension/no movement</i>	3.5 [2.5, 5.0]	< 0.0001
<i>Withdrawal</i>	1.7 [1.2, 2.4]	0.003
<u>DRS_{Function} [first assessment]:</u> <i>Totally dependent: 24 hr care</i>	2.5 [1.7, 3.8]	< 0.0001
IVH	1.7 [1.3, 2.2]	0.0005
Followed cmds [within 5 days of injury]	0.5 [0.3, 0.7]	0.0003

*First assessment occurs 2-weeks post injury

Abbreviations: DRS: Disability Rating Scale; IVH: intraventricular hemorrhage; cmds: commands; hr: hour

Supplementary Table 5: TRACK-TBI External Validation Cohort Characteristics					
	All (N = 124)	1-Year Outcome			
		DRS _{Depend -} (N = 43)	DRS _{Depend +} (N = 35)	Died (N = 22)	Missing (N = 24)
DEMOGRAPHICS					
Age; Mean (SD)	40.3 (16.4)	35.2 (16.3)	40.6 (16.6)	48.7 (15.4)	41.4 (14.4)
Sex Male; N (%)	95 (77)	34 (79)	23 (66)	20 (91)	18 (75)
Race White; N (%)	100 (81)	37 (86)	26 (74)	20 (91)	17 (74)
Education Years; Mean (SD)	12.4 (2.4)	12.8 (2.6)	11.7 (1.8)	12.1 (2.9)	12.9 (2.3)
CLINICAL CHARACTERISTICS					
Craniectomy; N (%)	52 (43)	18 (42)	18 (51)	11 (50)	5 (23)
IVH; N (%)	28 (24)	9 (22)	8 (25)	4 (19)	7 (32)
<u>DRS_{Function} [first assessment]*; N (%)</u>					
Not Totally-dependent [score = 1-4]	1 (1)	0 (0)	0 (0)	1 (5)	0 (0)
Totally-dependent [5]	122 (98)	43 (100)	34 (100)	21 (95)	24 (100)
<u>DRS_{Eye} [first assessment]*; N (%)</u>					
Opens eyes spont/to voice [0-1]	35 (29)	19 (44)	10 (29)	4 (18)	2 (8)
Opens eyes to nox stim [2]	32 (26)	10 (23)	9 (26)	4 (18)	9 (39)
Does not open eyes [3]	56 (46)	14 (33)	16 (46)	14 (64)	12 (52)
<u>DRS_{Motor} [first assessment]*; N (%)</u>					
Localizing [1]	13 (11)	5 (12)	6 (17)	0 (0)	2 (9)
Withdrawal [2]	34 (28)	13 (30)	8 (23)	3 (14)	10 (43)
Flex/extend/no mvmt [3-5]	76 (61)	25 (59)	21 (60)	19(86)	11 (47)
Days post injury <u>[first assessment]*; Mean (SD)</u>	14.4 (2.5)	14.0 (2.7)	14.7 (2.3)	14.1 (2.5)	15.1 (2.5)
Followed cmds first 5 days; N (%)	20 (20)	11 (30)	5 (20)	1 (5)	3 (15)
IMPACT _{Core} score; Mean (SD)	43 (19)	40 (21)	45 (15)	49 (19)	41 (18)
IMPACT _{Core+CT} score; Mean (SD)	45 (20)	40 (21)	49 (18)	57 (18)	40 (17)
Discharged to Rehab; N (%)	45 (39)	27 (63)	8 (23)	1 (7)	9 (39)
OUTCOMES					
12-Month GOSE; Mean (SD)	3.5 (2.0)	5.1 (1.7)	3.1 (0.4)	--	--

*First assessment occurs 2-weeks post injury

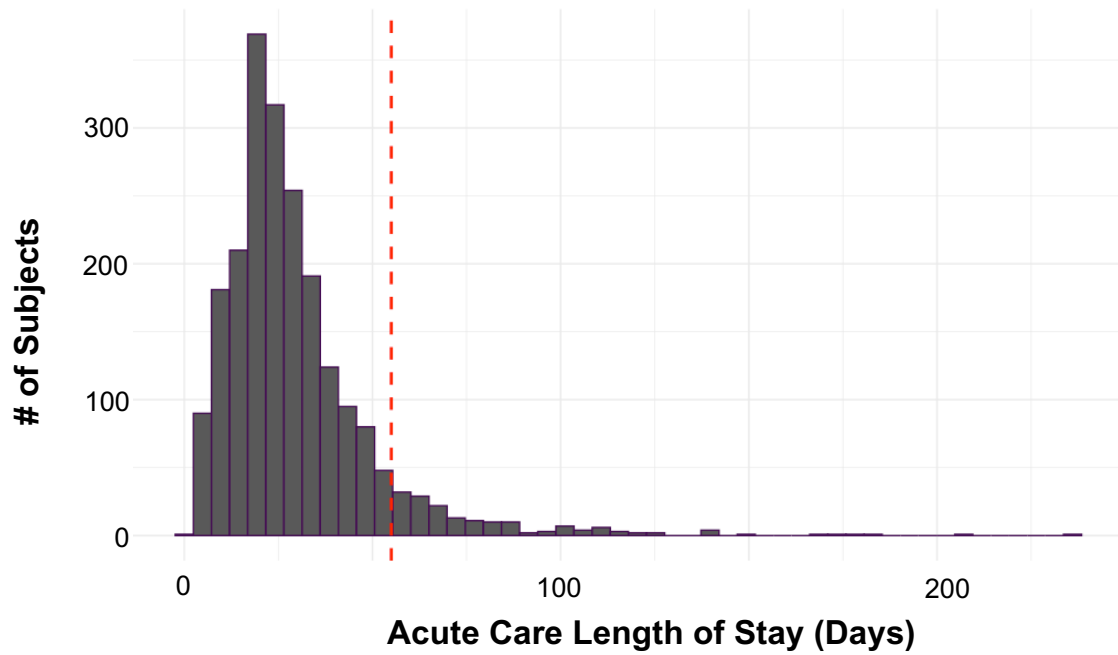
Abbreviations: SD standard deviation; IVH intraventricular hemorrhage; nox noxious; DRS Disability Rating Scale; cmds commands; GOSE Glasgow Outcome Scale Extended

Supplementary Table 6: Comparison of Subjects with Comparable Lengths of Stay in TBI-MS and TRACK-TBI

	TBI-MS Cohort LOS 11-17 days (N = 380)	TRACK-TBI External Validation Cohort (N = 124)	P value
DEMOGRAPHICS			
Age; Mean (SD)	45 (21)	40 (16)	0.008
Sex Male; N (%)	273 (72)	95 (77)	0.4
Race White; N (%)	253 (67)	100 (81)	0.004
Education Years; Mean (SD)	12 (3)	12 (2)	0.8
CLINICAL CHARACTERISTICS			
Craniectomy; N (%)	38 (12)	52 (43)	< 0.0001
IVH; N (%)	122 (34)	28 (24)	0.02
<u>DRS_{Function} [first assessment]*; N (%)</u>			
Not Totally-dependent [score = 1-4]	128 (34)	2 (2)	< 0.0001
Totally-dependent [5]	252 (66)	122 (98)	
<u>DRS_{Eye} [first assessment]*; N (%)</u>			
Opens eyes spont/to voice [0-1]	340 (89)	35 (28)	< 0.0001
Opens eyes to nox stim [2]	24 (6)	32 (26)	
Does not open eyes [3]	16 (4)	56 (45)	
<u>DRS_{Motor} [first assessment]*; N (%)</u>			
Localizing [1]	283 (74)	13 (10)	< 0.0001
Withdrawal [2]	58 (15)	34 (28)	
Flex/extend/no mvmt [3-5]	39 (10)	76 (62)	
Days post injury [first assessment]*; Mean (SD)	14 (2)	14 (3)	1
Followed cmds first 5 days; N (%)	155 (41)	20 (20)	0.0002
Discharged to inpatient rehab; N (%)	380 (100)	45 (39)	< 0.0001
OUTCOMES			
DRS _{Depend} + [1-year]; N (%)	30 (10)	35 (35)	< 0.0001
Died; N (%)	21 (7)	22 (22)	< 0.0001
GOSE 2-3 [1-year]; N (%)	65 (22)	39 (39)	0.002
Missing Outcome; N (%)	88	24	0.4

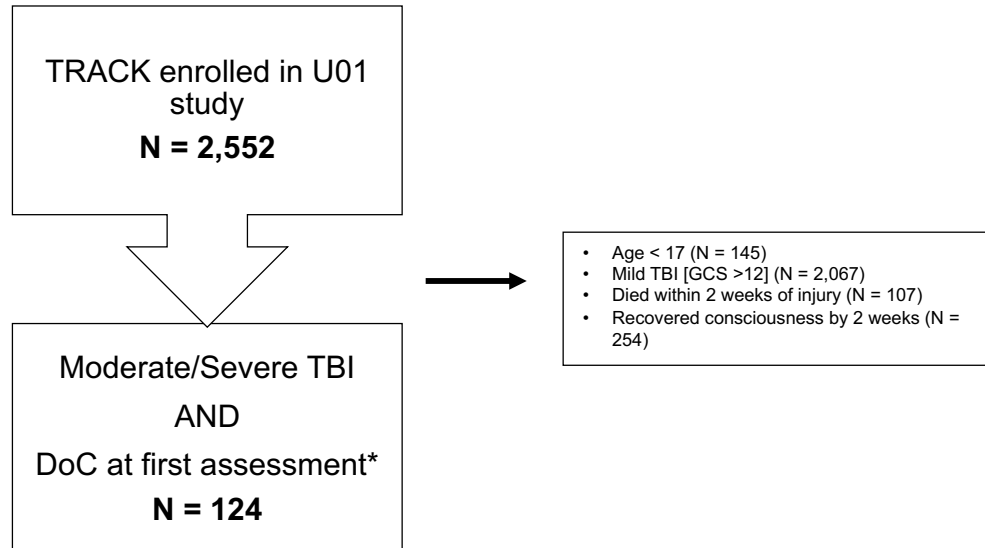
*First assessment occurs 2-weeks post injury

Abbreviations: LOS Length of Acute Care Stay; SD standard deviation; IVH intraventricular hemorrhage; nox noxious; DRS Disability Rating Scale; spont spontaneous; cmds commands; GOSE Glasgow Outcome Scale Extended (GOSE)



Supplementary Figure 1: Distribution of Acute Care Lengths of Stay
Histogram of acute care lengths of stay. Red dashed line indicates 1.5 x Interquartile Range, beyond which subjects were excluded from the study.

TRACK-TBI (EXTERNAL VALIDATION) COHORT

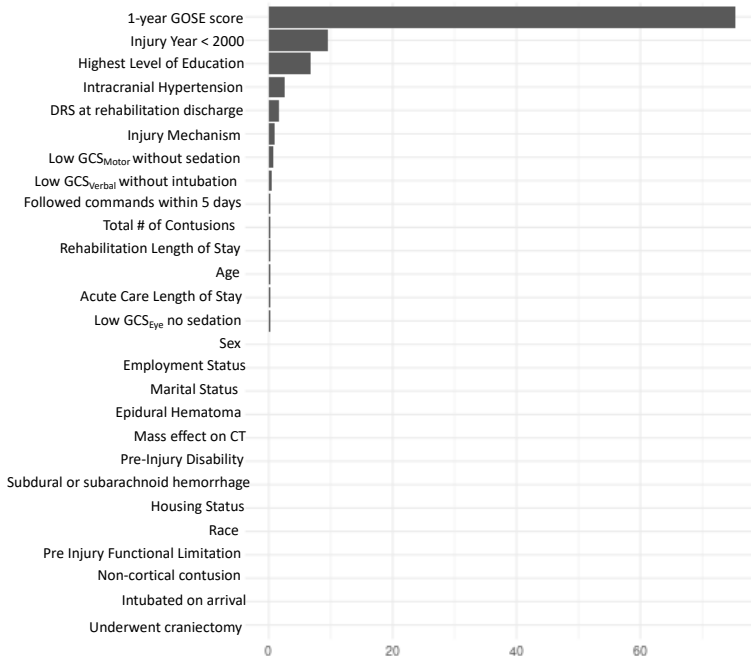


Supplementary Figure 2: Track-TBI (Validation) Cohort Flowchart

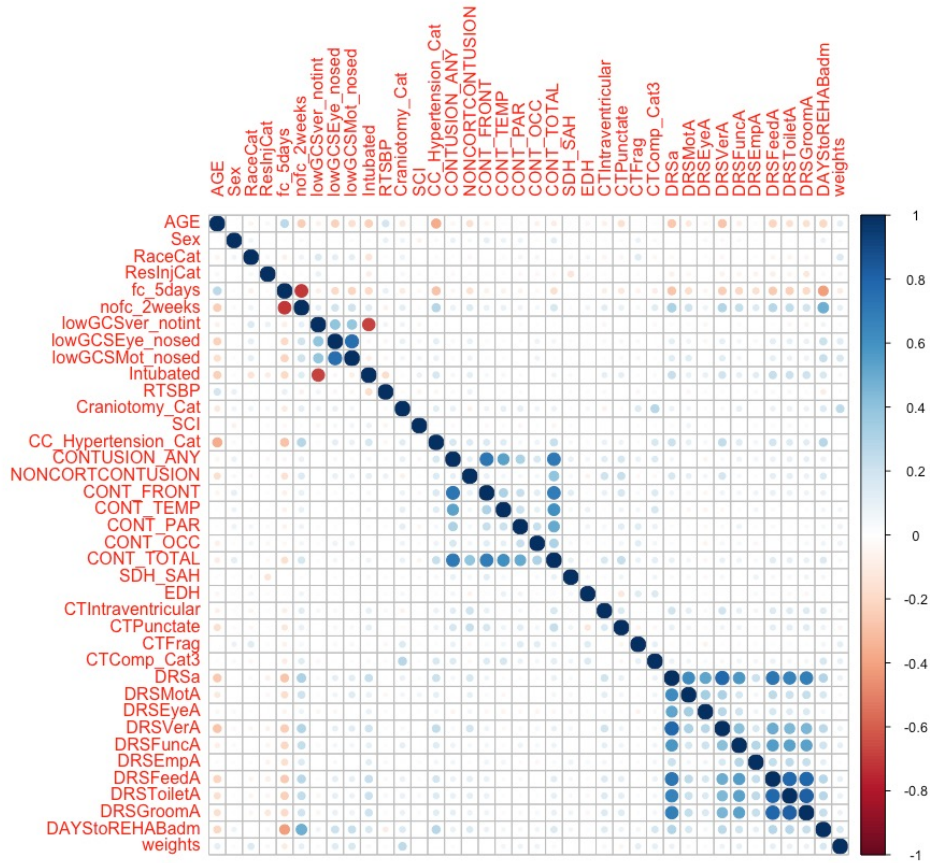
TRACK-TBI (Validation Cohort) CONSORT flow diagram.

*first assessment occurred at 2-weeks post injury

Abbreviations: DoC: disorders of consciousness; GCS: Glasgow Come Scale; TBI: traumatic brain injury



Supplementary Figure 3: Relative Propensity Model Influence of TBI-MS Covariates
 All variables screened for the gradient boosted inverse propensity model. Size of each bar indicates relative contribution to the propensity score.

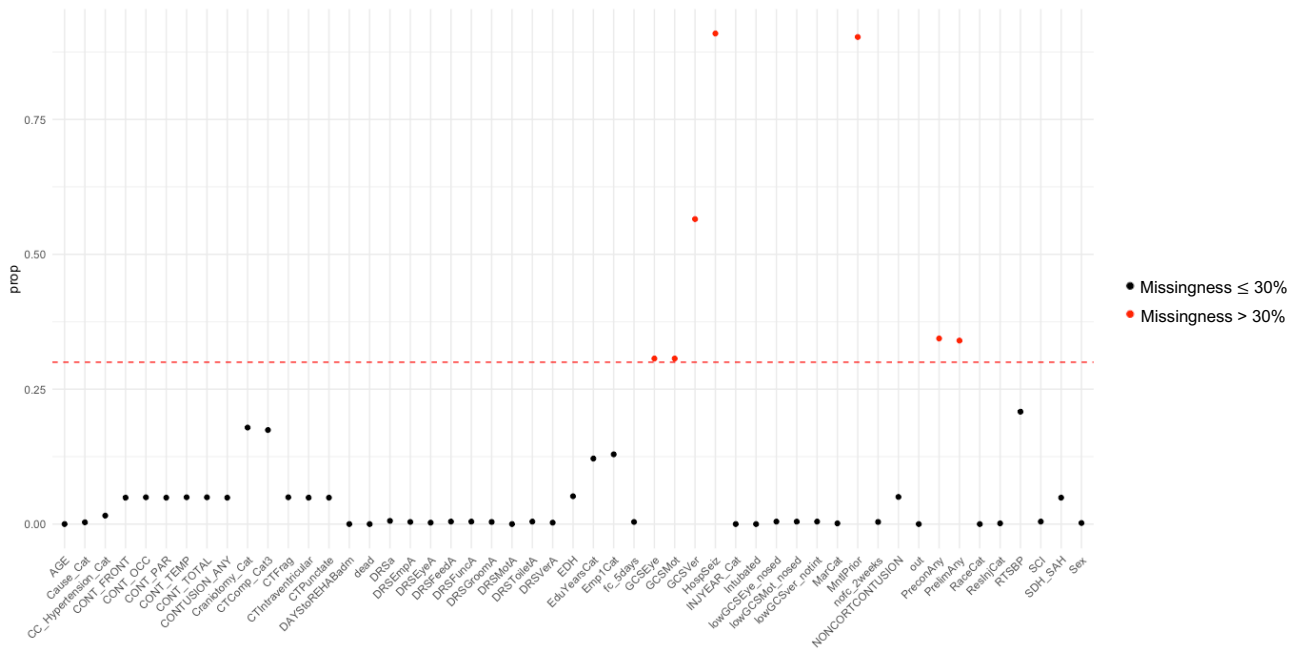


Among ≥ 0.7 colinear pairs below, **red variable excluded from further analyses:**

- [**LowGCSEyeNoSed** vs lowGCSMotnosed]
- [**no_cmds_2weeks** vs flw_cmds_5days]
- [**ContusionAny** vs ContusionFrontal]
- [ContusionTotal or **ContusionANY**]
- [**DRSa** (Total Score) vs **DRSVerA**]
- [**DRSa** (Total Score) vs **DRSFeedA**]
- [**DRSToiletA** vs **DRSFeedA**]
- [**DRSToiletA** vs **DRSGroomA**]

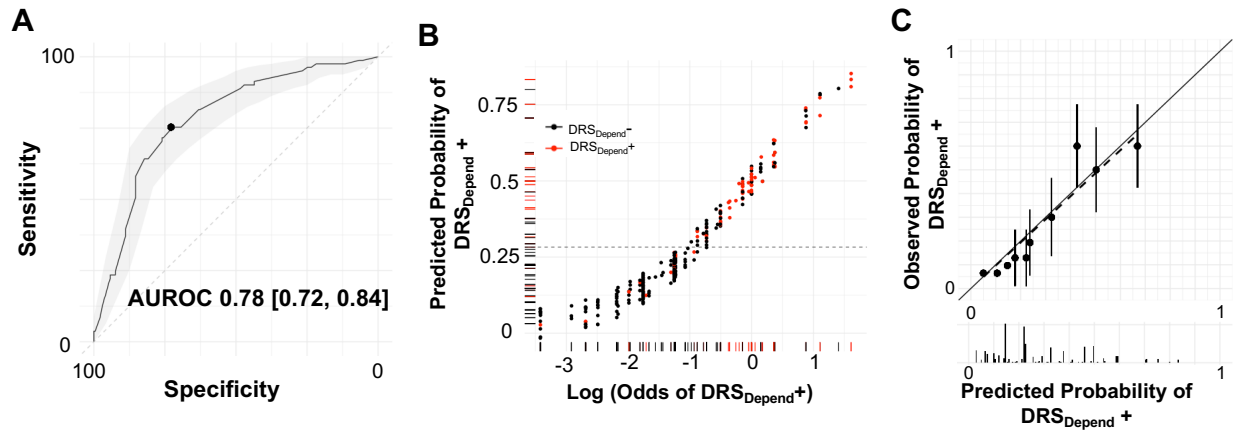
Supplementary Figure 4: Exposure Variable Collinearity

Correlation matrix (Spearman's Rho) for all exposure variables. Among variable pairs with Spearman's Rho ≥ 0.7 (listed to the right of the plot) one variable was excluded (red) from further analysis. Abbreviations: DRS = Disability Rating Scale; LowGCSEyeNoSed = $GCS_{Eye} < 2$ and patient not sedated; LowGCSMotnosed = $GCS_{Motor} \leq 4$ and patient not sedated/paralyzed; no_cmds_2weeks = no command following within 2 weeks of injury; flw_cmds_5days = command following within 5 days of injury



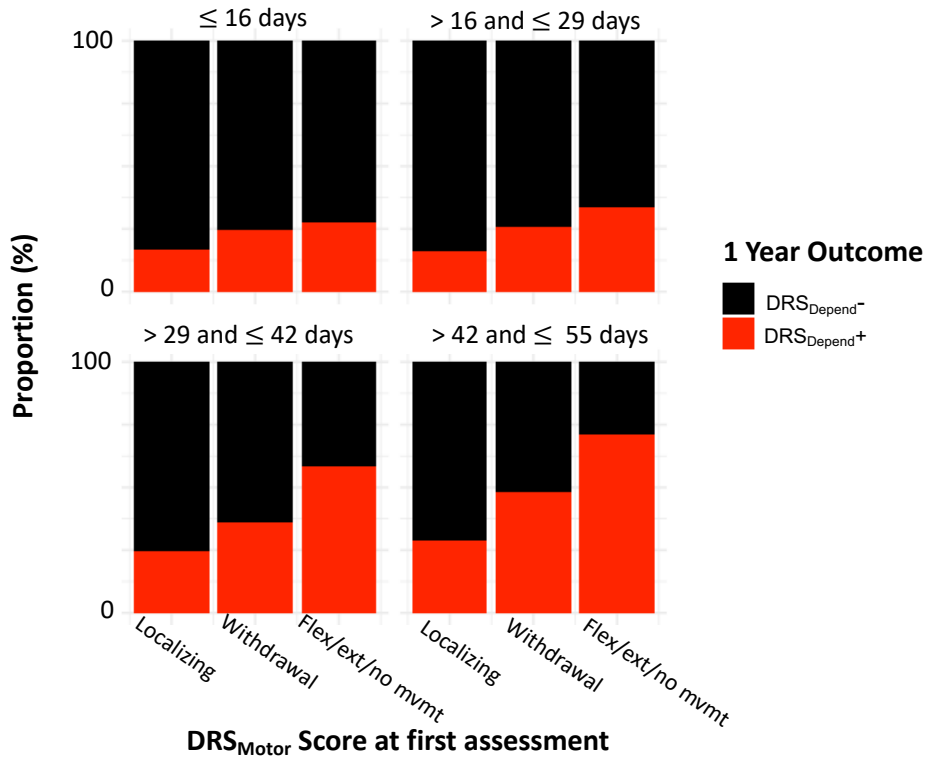
Supplementary Figure 5: Exposure Variable Missingness

The proportion of missing data for each candidate exposure variable. Variables with $>$ 30% missing data (red) were excluded from further analysis.



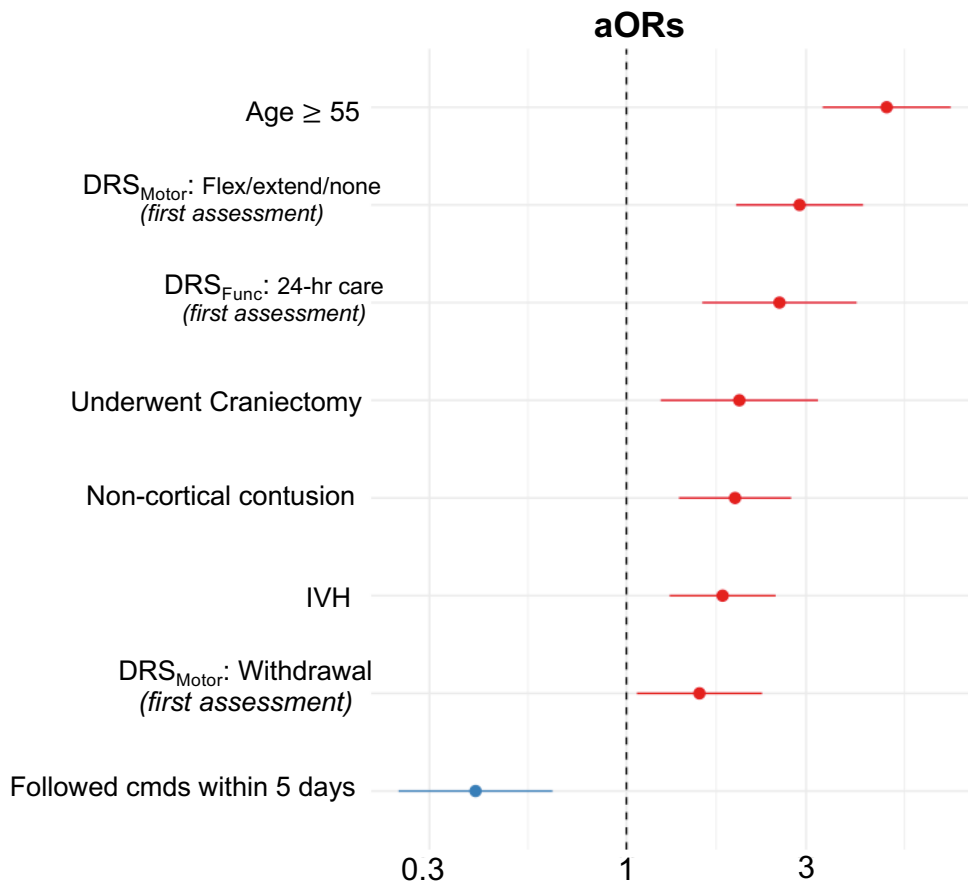
Supplementary Figure 6: Performance of “Track-Aligned” Model in Testing Sample

(A) Area under the Receiver Operating Characteristic Curve for Track-Aligned Dependency prediction model within the TBI-MS Testing Sample. Shaded area reflects the 95% confidence interval. (B) Rug plot showing predicted dependency probabilities (y axis) and the logarithm of the odds of dependency (x axis). Each dot represents one subject and each subject is also entered as a tick on each axis. Color indicates 1-year outcome (red: $DRS_{Depend+}$, black: $DRS_{Depend-}$). The dashed line represents the Youden J cut-point derived from (A). $DRS_{Depend+}$ subjects cluster towards the upper right quadrant of the plot. (C) Calibration plot showing predicted dependency probabilities (x axis) and observed probabilities (y axis). Each dot represents a 10-percentile bin of predicted probabilities. Error bars represent 95% confidence intervals. Histogram below the x axis shows the relative density of observations in each predicted probability bucket.



Supplementary Figure 7: Association Between DRS_{Motor} and Primary Outcome Varies based on Days to First Post-Injury Assessment.

In the TBI-MS Model Derivation cohort, the proportion of each 1-year outcome is shown based on DRS_{Motor} scores at time of first assessment (rehabilitation admission). Each quadrant represents one strata of days from injury to rehabilitation admission. As days between injury and rehabilitation admission increase, the difference in the proportion of patients with death or DRS_{Depend}⁺ 1-year outcomes across DRS_{Motor} scores becomes more pronounced. For example, for participants assessed for the first time (i.e., admitted to rehabilitation) within approximately 2 weeks post-injury, the DRS_{Motor} item score is not strongly associated with outcome (height of top left panel red bars are similar). However, for participants assessed for the first time (i.e., admitted to rehabilitation) 42-55 days post-injury, there is a much clearer association between more impaired DRS_{Motor} item scores and 1-year dependency (DRS_{Depend}⁺). Tested statistically, there was a significant interaction (in the full model) between DRS_{Motor} score of Flexion/extension/no movement and time to first assessment, with each additional post injury day increasing DRS_{Motor} aOR by 1.04 [1.01, 1.08] (p=0.01). Thus, a more impaired motor exam later post-injury may be more predictive of outcome than a more impaired motor exam early in recovery. Abbreviations: Flex: flexion, Ext: extension, Mvmt: movement



Supplementary Figure 8: Dependency *Only* Prediction Model

We derived new inverse propensity weights and fit a new *dependency-only* prediction model in the TBI-MS Discovery Sample (N=1429; Derivation: N=1145, Testing: N=284). The resulting model was nearly identical to our initial model, with AUROC of 0.78 [0.71, 0.84], sensitivity 68%, specificity 75%, PPV of 42% and NPV 90%. A forest plot of adjusted odds ratios (aORs) for variables included in the dependency-only prediction model (i.e., deaths excluded from analysis). Abbreviations: DRS: Disability Rating Scale, Cmds: commands, IVH: intraventricular hemorrhage, SDH: subdural hematoma, SAH: subarachnoid hemorrhage.

Predicting Functional Dependency in Patients with Disorders of Consciousness after Traumatic Brain Injury: A TBI-Model Systems and TRACK-TBI Study

Samuel B. Snider MD^{1,2}, Nancy R. Temkin PhD^{3,4}, Jason Barber MS³, Brian L. Edlow MD^{2,5,6}, Joseph T. Giacino PhD^{2,7}, Flora M. Hammond MD⁸, Saef Izzy MD^{1,2}, Robert G. Kowalski, MBBCh, MS⁹, Amy J. Markowitz JD¹⁰, Craig A. Rovito MD^{2,7}, Shirley L. Shih MD^{2,7}, Ross D. Zafonte DO^{2,7}, Geoffrey T. Manley MD PhD^{10,11}, Yelena G. Bodien PhD^{2,5,7} and the TRACK-TBI investigators.

SUPPLEMENTARY MATERIAL: Variable Definitions

Affiliations

- 1 Division of Neurocritical Care, Department of Neurology, Brigham and Women's Hospital, Boston, MA, USA
- 2 Harvard Medical School, Boston, MA, USA
- 3 Department of Neurological Surgery, University of Washington, Seattle, Washington, USA.
- 4 Department of Biostatistics, University of Washington, Seattle, Washington, USA.
- 5 Center for Neurotechnology and Neurorecovery and Department of Neurology, Massachusetts General Hospital, Boston, MA, USA
- 6 Athinoula A. Martinos Center for Biomedical Imaging, Massachusetts General Hospital, Charlestown, MA, USA
- 7 Department of Physical Medicine and Rehabilitation, Spaulding Rehabilitation Hospital, Boston, MA USA
- 8 Department of Physical Medicine and Rehabilitation, Indiana University School of Medicine, Indianapolis, IN, USA
- 9 Departments of Neurosurgery and Neurology, University of Colorado School of Medicine, Aurora CO, USA
- 10 Department of Neurological Surgery, UCSF, San Francisco, CA USA
- 11 Brain and Spinal Cord Injury Center, Zuckerberg San Francisco General Hospital and Trauma Center, San Francisco, CA USA

Exposure variables (TBI-MS)				
Demographics	Pre-Injury	Injury	Hospital	CT
Age	Pre-injury disability	GCS motor	Followed commands within 5 days	Subdural or Subarachnoid Hemorrhage (SDH/SAH)
Sex	Pre-injury limitation	GCS Verbal	No commands for 14 days	Intraventricular Hemorrhage (IVH)
Race	Pre-Injury Marital status	GCS Eye	Underwent Craniectomy	Epidural Hemorrhage (EDH)
Year of Injury	Pre-Injury Residence	LowGCSEye, not sedated	Spinal cord injury	Punctate/Petechial hemorrhage
	Pre-Injury Education	LowGCSMotor, not sedated	Seizures	Intracranial Bone Fragment
	Pre-Injury Employment	LowGCSVerbal, not intubated	Intracranial hypertension	Any Contusion
	Pre-Injury Mental health problem	Intubated on arrival	Days post injury of initial DRS assessment	Non-Cortical Contusion
		Systolic Blood Pressure on arrival	Initial DRS sub-items at admission to rehab (categorized as below)	Frontal/Temporal/Parietal/Occipital Contusion
		Spinal Cord Injury?	Initial DRS total score category on admission to rehab	CT Compression
		Injury Mechanism	Days between Injury and 1-year follow-up	Total # of Contusions

VARIABLE DEFINITIONS PROVIDED BELOW:

DEMOGRAPHICS

Age:

Recoded from continuous to binary variable: < or ≥55

Race:

White
non-white

Year of Injury:

< 2000
≥ 2000

PRE-INJURY

Pre-Injury Disability:

Absent
Present: *A pre-existing condition resulting in blindness, deafness, or substantial limitation in one or more basic physical activities such as walking, climbing stairs, reaching, lifting or carrying.*

Pre-Injury Limitation:

Absent
Present: *A pre-existing condition resulting in:
difficulties learning, remembering or concentrating
difficulties in dressing, bathing or getting around inside the home
difficulties going outside the home alone to shop or visit a doctor
difficulties working at a job or business*

Pre-Injury Marital status:

Single
Married
Other

Pre-Injury Residence:

Private home
All others: *Nursing home, adult home, correctional institution, hotel, homeless, hospital: acute care, hospital: rehabilitation, hospital: other*

Pre-Injury Mental Health Problem (in year preceding injury):

No
Yes

Pre-Injury Education:

< High School
High School diploma or GED
Some college
Bachelor's degree or beyond

Pre-Injury Employment:

Competitively employed
Student
Unemployed or not in labor force

Clinical Characteristics

LowGCSverbal, not intubated:

Synthetic variable created because GCSVerbal scored as missing (rather than 1) if intubated, sedated or paralyzed

Absent:

Present: *(Patient not intubated/sedated/paralyzed and GCS Verbal score < 3)*

LowGCSMotor, not sedated:

Synthetic variable created because GCSMotor scored as missing (rather than 1) if sedated or paralyzed

Absent:

Present: *(Patient not sedated/paralyzed and GCS Motor score \leq 4)*

LowGCSEye, not sedated:

Synthetic variable created because GCSEye scored as missing (rather than 1) if sedated or paralyzed

Absent:

Present: *(Patient not sedated/paralyzed and GCS Eye score < 2)*

Systolic Blood Pressure:

0 if in arrest on arrival

Intracranial Hypertension:

0: *unmonitored or no episodes of ICP \geq 20 mmHg*

1: *single episode of ICP \geq 20 mmHg during one 24-hour period*

2: *ICP \geq 20 mmHg during multiple 24-hour periods or sustained elevation for one 24-hour period*

Injury Mechanism:

High velocity: *(motor vehicle, motorcycle, bicycle, All-Terrain Vehicle, All-Terrain Cycle, or other vehicular)*

Fall-related: *(any head injury related to a fall)*

Other/Low velocity: *(gunshot wound, assaults with blunt instrument, other violence, water sports, field/track sports, gymnastic activities, winter sports, air sports, other sports, hit by falling/flying object, pedestrian, or other/unclassified)*

Followed commands within 5 days:

Absent

Present: *(Abstracted from patients medical record: documentation, within 5 days of injury, of command following two times within a 24 hour period or documentation of GCS_{motor} score of 6 two times within a 24 hour period)*

No commands for 14 days:

Absent:

Present: *(Abstracted from patients medical record: Absence of documentation, within 14 days of injury, of command following two times within a 24 hour period or documentation of GCS_{motor} score of 6 two times within a 24 hour period)*

First assessment DRS_{Motor} Re-coded

- 0: (*DRS_{Motor} 1*) Localizes noxious stimuli
- 1: (*DRS_{Motor} 2*) Withdraws to noxious stimuli
- 2: (*DRS_{Motor} 3-5*) Flexes, extends, or does not move to noxious stimuli

First assessment DRS_{Eye} Re-coded

- 0: (*DRS_{Eye} 0-1*) Eyes open spontaneously or with verbal stimulation
- 1: (*DRS_{Eye} 2*) Eyes open with noxious stimulation
- 2: (*DRS_{Eye} 3*) Eyes do not open

First assessment DRS_{Verbal}

- 0: Oriented
- 1: Confused
- 2: Making any verbal utterances
- 3: No sounds or speech

First assessment DRS_{Groom}

- 0: Complete awareness
- 1: Partial awareness
- 2: Minimal awareness
- 3: No awareness

First assessment DRS_{Feed}

- 0: Complete awareness
- 1: Partial awareness
- 2: Minimal awareness
- 3: No awareness

First assessment DRS_{Toilet} Re-coded

- 0: (*DRS_{Toilet} 0-2*) Complete awareness to Minimal Awareness
- 1: (*DRS_{Toilet} 3*) No awareness

First assessment DRS_{Functional} Re-coded

- 0: (*DRS_{Functional} 0-4*) Completely independent to Markedly Dependent, assistance required for all major activities
- 1: (*DRS_{Functional} 5*) Totally dependent: 24 hour nursing care

First assessment DRS_{Employment} Re-coded

- 0: (*DRS_{Employment} 0-2*): Not restricted to sheltered workshop, non-competitive
- 1: (*DRS_{Employment} 3*): Not employable

First assessment DRS_{Total} Category Recode

- 0-21 (None to Extremely Severe Disability)
- 22-24 (Vegetative State)
- 25-29 (Extreme Vegetative State)

CT-SCAN

(CODED BASED ON ALL CT REPORTS WITHIN 7 DAYS OF INJURY; MRI NOT INCLUDED)

CT Compression:

None
Mild (*cisterns present, shift < 5mm*)
Severe (*Midline shift > 5mm or cisterns absent*)

SDH/SAH:

Absent
Present (*Subdural or subarachnoid hemorrhage present*)

IVH:

Absent
Present (*Intraventricular hemorrhage present*)

EDH:

Absent
Present (*Epidural hemorrhage present*)

Intracranial Bone Fragment:

Absent
Present

Punctate/Petechial hemorrhage:

Absent
Present

Frontal/Temporal/Parietal/Occipital Contusion:

Absent
Present (*left-sided, right-sided or side not specified*)

Unknown-location Contusion:

Absent
Present (*location not specified*)

Non-cortical Contusion:

Absent
Present (*left-sided, right-sided or side unspecified parenchymal but non-cortical contusion*)

Any Contusion:

Absent
Present (*Any frontal, temporal, parietal, occipital or location unspecified contusion. Non-cortical contusions not included*).

Total Contusions:

Total number of scored contusion locations in the brain (summed across left and right hemisphere)