

1 **Title**

2 **Estimation of the number of RSV-associated hospitalisations in adults in the European**  
3 **Union**

4 **Running title: RSV-associated hospitalisation in the EU**

5 **Authors:** Richard Osei-Yeboah<sup>1</sup>, Peter Spreeuwenberg<sup>2</sup>, Marco Del Riccio<sup>2, 3</sup>, Thea K.  
6 Fischer<sup>4,5</sup>, Amanda Cavling<sup>4,5</sup>, Håkon Boas<sup>6</sup>, Michiel van Boven<sup>7,8</sup>, Xin Wang<sup>9</sup>, Toni  
7 Lehtonen<sup>10</sup>, Mathieu Bangert<sup>11</sup>, Harry Campbell<sup>1</sup>, John Paget<sup>2</sup>; on behalf of the RESCEU  
8 investigators

9 **Affiliations:**

- 10 1. Centre for Global Health, Usher Institute, University of Edinburgh, Edinburgh, UK
- 11 2. Netherlands Institute for Health Services Research (Nivel), Utrecht, The Netherlands
- 12 3. Postgraduate Medical School in Public Health, University of Florence, 50134  
13 Florence, Italy
- 14 4. Statens Serum Institut, Copenhagen, Denmark
- 15 5. Departments of Clinical Research Nordsjaellands Hospital, Hilleroed and Public  
16 Health, University of Copenhagen, Denmark
- 17 6. Department of Infection Control and Vaccines, Norwegian Institute of Public Health,  
18 Oslo, Norway.
- 19 7. Centre for Infectious Disease Control, National Institute for Public Health and the  
20 Environment, Bilthoven, The Netherlands
- 21 8. Julius Center for Health Sciences and Primary Care, University Medical Center  
22 Utrecht, Utrecht University, Utrecht, The Netherlands
- 23 9. School of Public Health, Nanjing Medical University, Nanjing, China
- 24 10. Department of Health Security, Finnish Institute for Health and Welfare (THL),  
25 Helsinki, Finland
- 26 11. Sanofi Vaccines, Lyon, France

27 **Corresponding author**

28 Richard Osei-Yeboah, Centre for Global Health, Usher Institute, University of Edinburgh,  
29 Edinburgh, UK

30 **Email:** [Richard.Osei-Yeboah@ed.ac.uk](mailto:Richard.Osei-Yeboah@ed.ac.uk)

**NOTE:** This preprint reports new research that has not been certified by peer review and should not be used to guide clinical practice.

31 **Abstract**

32 **Background:** Respiratory syncytial virus (RSV) is a major cause of lower respiratory tract  
33 infections in older adults that can result in hospitalisations and death. Estimating RSV-  
34 associated hospitalisation is critical for planning RSV-related healthcare needs for the ageing  
35 population across Europe.

36 **Methods:** We gathered national RSV-associated hospitalisation estimates from the  
37 REspiratory Syncytial virus Consortium in EUrope (RESCEU) for adults in Denmark, England,  
38 Finland, Norway, Netherlands, and Scotland from 2006 to 2017. We extrapolated these  
39 estimates to 28 EU countries using nearest-neighbour matching, multiple imputations, and  
40 two sets of 10 indicators.

41 **Results:** On average, 158 229 (95%CI: 140 865-175 592) RSV-associated hospitalisations  
42 occur annually among adults in the EU (above 18 years); 92% of these hospitalisations occur  
43 in adults over 65 years. Among 75-84 years old, the annual average is estimated at 74 519  
44 (95%CI: 69 923-79 115) at a rate of 2.24 (95%CI: 2.10-2.38) per 1000 adults. Among adults  
45 aged  $\geq 85$  years, the annual average is estimated at 37 904 (95%CI: 32 444-43 363) at a rate  
46 of 2.99 (95%CI: 2.56-3.42).

47 **Conclusion:** Our estimates of RSV-associated hospitalisations in older adults are the first  
48 analysis integrating available data to provide estimates of the disease burden in this  
49 population across the EU. Importantly, for a condition which was considered in the past to  
50 be primarily a disease of young children, the average annual hospitalisation estimate in  
51 adults was lower but of a similar magnitude to the estimate in young children aged 0-4  
52 years: 158 229 (95%CI: 140 865–175 592) versus 245 244 (95%CI: 224 688 –265 799).

53 **Keywords**

54 Respiratory syncytial virus, adults, hospitalisation, European Union, burden

55

56

57

58

59

## 60 Introduction

61 Respiratory syncytial virus (RSV) is a major cause of acute respiratory infections (ARI) in both  
62 infants and older adults. In adult populations with RSV infections, lower respiratory tract  
63 infection is common and can result in respiratory failure or death [1, 2]. RSV is a common  
64 cause of hospitalisation for older adults especially in the winter months and the commonly  
65 associated diagnoses include pneumonia and exacerbations of chronic conditions such as  
66 chronic obstructive pulmonary disease (COPD), congestive heart failure (CHF), and asthma  
67 [3-7]. Severe respiratory illnesses resulting from RSV infections with complications that  
68 could be compared to those caused by seasonal influenza, often among influenza-  
69 immunised populations, have been reported in hospitalised adults [2]. The mean length of  
70 stay among RSV-associated hospitalisations as compared to influenza is longer among adults  
71 (6.0 days vs 3.6 days) [8], and an even longer median length of stay of 9 days (6-25 days) has  
72 been reported in adults hospitalised with RSV [9].

73 A high burden of RSV hospitalisations among adults, notably older adults and persons with  
74 chronic conditions including transplantation, COPD, and CHF has been reported [10, 11].  
75 Previous studies have reported varying estimates of the incidence of RSV infections in  
76 hospitalised adults [5, 11, 12]. Estimating the incidence of RSV infection in hospitalised  
77 adults remains challenging as there are no dedicated RSV surveillance systems, RSV is not  
78 routinely screened for in patients with an ARI and only the more severe cases are commonly  
79 diagnosed [13]. RSV-associated mortality among older adults is reportedly substantial and  
80 comparable to influenza [14] with the majority of deaths occurring among persons aged  $\geq 60$   
81 years [8]. Global estimates indicate that the RSV-associated hospital admission rate and in-  
82 hospital case fatality rate (hCFR) are higher among persons aged  $\geq 65$  years compared to  
83 those aged 50-64 years [12]. Older adults may be more susceptible to viral and bacterial

84 diseases and complications including RSV-associated hospitalisations partly due to  
85 immunosenescence [15] and the number of comorbidities that exist in this population [16].  
86 It is recognised that RSV infections are common in older adults in high-income countries [7,  
87 17]. To effectively plan healthcare resource utilisation and adequately manage the RSV-  
88 related healthcare needs of the older adult population across Europe, including prioritising  
89 preventive care, it is important to understand the RSV disease burden in this population. In  
90 this study, we aimed to estimate the numbers and incidence rates of RSV-associated  
91 hospital admissions in 28 European Union (EU) countries including the UK and Norway by  
92 using data from a previously published REspiratory Syncytial virus Consortium in EUrope  
93 (RESCEU) study [18] and a literature review.

94

## 95 **Methods**

96 We used a two-stage approach to estimate RSV-associated hospitalisations in adults across  
97 the countries in the EU.

### 98 ***Stage 1 input data***

99 In Stage 1, we gathered and used modelling inputs from the previously published RESCEU  
100 project estimating nationally RSV-associated average annual hospitalisations and  
101 hospitalisation rates for adults in Denmark, England, Finland, Norway, Netherlands, and  
102 Scotland from 2006 to 2017 [18]. These studies used time-series regression methods to  
103 estimate the RSV-associated numbers and rates of hospitalisation.

104 *RSV hospital admission definition in RESCEU studies*

105 In Stage 1, the previous RESCEU studies identified all respiratory hospital admissions using  
106 ICD-10 codes at any point during an admission. The studies extracted all hospital admissions  
107 with any mention of respiratory tract infection (RTI), RTI admissions with any mention of  
108 pathogen-specific diagnosis code (pathogen-coded admissions) and RTI admissions with an  
109 RSV diagnosis code (RSV-coded admissions) [18].

110 *Scoping literature review*

111 In addition, to complement RESCEU data, we conducted a scoping literature review in  
112 November 2021 to identify estimates that used the same methodology in the RESCEU  
113 studies. We searched Medline and Embase electronic databases using pre-defined terms to  
114 identify original articles on RSV-associated hospitalisations (Supplementary File 1). The  
115 search broadly focused on national estimates published in European countries between  
116 2000 and 2021. Our search did not apply any language restrictions. Two independent  
117 reviewers (ROY and MDR) conducted title and abstract screening, full-text screening and  
118 data extraction. We followed the Preferred Reporting Items for Systematic Reviews and  
119 Meta-Analyses (PRISMA) guidelines [19]. The diagnosis codes used to identify respiratory  
120 diagnosis groups of the data sources that provided Stage 1 estimates are presented in Table  
121 1.

122 *Stage 2 statistical modelling*

123 In Stage 2, we extracted the data from the six national RESCEU estimates to create the input  
124 data. We extrapolated the input data to the EU using two different modelling approaches  
125 the nearest-neighbour matching and multiple imputations, and two sets of 10 indicators  
126 (Supplementary File 2) [20]. This resulted in four distributions of plausible values for each

127 country. Next, a hierarchical linear model was used to estimate a rate and confidence  
128 interval for each country. These approaches generated four sets of estimates, with  
129 confidence intervals and the averages of these estimates and the confidence intervals were  
130 reported. We estimated the average number of RSV-associated hospitalisations and the  
131 annual hospitalisation rates (per 1 000 adult population) by age group in the EU including  
132 the UK and Norway. The outputs of the two modelling approaches for the EU are presented  
133 in Supplementary Files 3-10.

## 134 **Results**

### 135 *Scoping literature review*

136 Of 1 392 citations assessed, five were identified to be eligible for inclusion in the analysis.  
137 Two of the eligible studies provided estimates only for infants and data from these studies  
138 were not included in this analysis. We found three eligible studies providing new estimates  
139 for England [21-23], but because there were recent RESCEU estimates for England, the new  
140 estimates found from the literature were not included as input data for Stage 2. The search  
141 records of RSV-associated hospitalisation estimates are outlined in a PRISMA flowchart  
142 (Figure 1).

### 143 *Stage 2 estimates*

#### 144 *Number of RSV-associated hospital admissions in 28 EU countries*

145 Extrapolating the data from five EU countries and Norway to 28 EU countries (including the  
146 UK), we estimate that on average 158 229 (95% Confidence Interval (CI): 140 865 – 175 592)  
147 RSV-associated hospitalisations occurred annually among adults aged 18 years and older  
148 (Table 2). The highest average annual number of RSV-associated hospital admissions among  
149 adults aged 18-64 years: 2 896 (95% CI: 2 039 – 3 752), and ≥85 years: 6 002 (95% CI: 4 028 –

150 7 976) were estimated to occur in the UK whilst the highest average annual RSV-associated  
151 number of hospital admissions for adults aged 65-74 years: 5 387 (95% CI: 3 885 – 6 889)  
152 and 75-84 years: 13 843 (95% CI: 11 923 – 15 764) was estimated to occur in Germany  
153 (Table 2). The lowest average annual RSV-associated number of hospital admissions in all  
154 age groups occurs in Malta (Table 2). Of the overall RSV-associated hospital admissions, 145  
155 102 (95%CI: 129 961- 160 242) occurred among adults older than 65 years per year. Among  
156 adults aged 75-84 years, we estimate an average annual RSV-associated hospital admission  
157 of 74 519 (95% CI: 69 923 – 79 115) at a rate of 2.24 (95% CI: 2.10-2.38) per 1 000 adults per  
158 year (Table 3). The highest proportion of RSV-associated hospitalisations (47%) occurred in  
159 this age group in the EU as well as in all countries compared to other age groups (Table 4). In  
160 the 28 EU countries, 91.7% of all adult RSV-associated hospital admissions occurred in adults  
161 older than 65 years (Table 4).

162 Importantly, the two model outputs did not differ significantly between the nearest-  
163 neighbour matching and multiple imputation approaches using the two indicator sets. The  
164 model only slightly differed by age group and the multiple imputation model estimates were  
165 slightly higher than the nearest-neighbour matching models.

#### 166 *Rate of RSV-associated hospital admissions per age group and across 28 EU countries*

167 The average annual RSV-associated hospital admission rates and numbers varied across the  
168 EU. The estimated rate of hospitalisation was higher for adults  $\geq 85$  years (2.99, 95% CI: 2.56-  
169 3.42 per 1 000) with an average number of hospital admission of 37 904 (95%CI: 32 444 – 43  
170 363) per year. Persons aged 18-64 years had the lowest hospitalisation rate of 0.04 (95% CI:  
171 0.03-0.05 per 1 000 per year) and average annual hospitalisation of 13 127 (95% CI: 10 904 –  
172 15 350).

173 The highest hospital admission rate per 1 000 adults aged 18-64 years [0.07 (95% CI: 0.06 -  
174 0.09)] was estimated in Ireland; the highest rates per 1 000 adults aged 65-74 years [1.37  
175 (95% CI: 1.18 - 1.57)], 75-84 years [2.59 (95% CI: 2.29 - 2.88)] and ≥85 years [4.45 (95% CI:  
176 3.61 - 5.28)] were estimated for Norway, Bulgaria and Romania respectively. The lowest  
177 hospital admission rates per 1 000 adults aged 18-64 years [0.01 (95% CI: -.00 - 0.02)], 65-74  
178 years [0.09 (95% CI: -.09 - 0.27)] and ≥85 years [1.12 (95% CI: 0.28 - 1.96)] were estimated in  
179 Finland, whilst the lowest hospital admission rate in adults aged 75-84 years [1.53 (95% CI:  
180 1.23 - 1.83) per 1 000] was estimated in the Netherlands (Table 3).

181

## 182 **Discussion**

183 RSV infection among older adults, especially those with underlying health conditions, is an  
184 important cause of acute respiratory infections that can lead to hospitalisation. A previous  
185 multi-site RSV burden cohort study conducted among healthy older adults and adults with  
186 comorbidities in three European countries showed that RSV burden in both healthy older  
187 adults and adults with comorbidities is substantial and comparable to influenza [24].

188 These estimates of RSV-associated hospitalisations in older adults are the first analysis  
189 integrating available data in six European countries to provide empirical evidence of the  
190 disease burden in this population across the EU. Our estimates show that RSV causes a high  
191 annual number of hospital admissions in adults across the EU (roughly 160 000 per year)  
192 with about 92% of cases occurring in adults aged 65 years and older. The highest annual  
193 count of RSV-associated hospitalisations occurred among adults aged 75-84 years and the  
194 highest rate of RSV-associated hospital admissions occurred among adults over 85 years. It  
195 is important to note that for a condition which was considered in the past to be primarily a



196 disease of young children, the average RSV-associated hospitalisation estimate in adults was  
197 lower, but of a similar magnitude to that in children aged 0-4 years: 158 229 (95%CI: 140  
198 865 – 175 592) versus 245 244 (95%CI: 224 688 – 265 799) hospitalisations per year [25].  
199 Indeed, taking the estimates for children aged 0-4 years into account; we estimate that 39%  
200 (145 604 out of 371 299) of the annual number of RSV-associated hospitalisations in the EU  
201 occurred in persons aged 65 years and older. With the changing demographics across  
202 Europe where elderly populations are increasing in size and considering the fact that RSV  
203 hospitalisation in adults can lead to acute functional decline and reduced quality of life [26],  
204 there is a need to get better data and estimates of the true burden of RSV in this age group.  
205 Our estimates, based on the available data, suggest a high burden of RSV in terms of  
206 hospital admissions in adult populations. Several studies have previously reported the  
207 burden and severity of clinical outcomes of RSV among adults in different settings [7, 9, 10,  
208 27-30]. For instance, in previous studies, the prevalence of RSV has been reported to be two  
209 times higher in patients aged over 75 years compared to those aged below 60 years [31].  
210 Sundaram et al. report that RSV is a major cause of acute respiratory infection in adults aged  
211 over 50 years and RSV infection is more frequently associated with adults aged 65-79 years  
212 when compared to those aged 50-64 years [32]. In a community cohort of adults aged 50  
213 years and over, the incidence of medically attended RSV infection was found to increase  
214 with age and the highest incidence occurred among persons aged over 70 years [33]. Our  
215 estimates of RSV-associated hospitalisation rates are consistent with the most recent  
216 pooled estimates based on prospective surveillance and modelling from the USA which  
217 report annual rates of RSV-associated hospitalisation of 178 (152-204) per 100 000 adults  
218 aged  $\geq 65$  years [34]. Among adults aged  $\geq 65$  years in the US, about 159 000 RSV-associated  
219 hospitalisations are estimated to occur each year which is comparable to our estimates of

220 over 145 000 hospitalisations occurring in the same age group across the EU [34]. We have  
221 focused on RSV-associated hospital admission in older adults which is considered more  
222 severe, expensive and has quality of life implications [35], but recognise that there is also a  
223 significant amount of RSV disease burden in the outpatient setting [36].

224 Our study had several important limitations. The national estimates used for the  
225 extrapolations were generated mainly from Northern and Western European countries.  
226 Additional national estimates from Southern and Eastern Europe would yield more  
227 representative and reliable estimates for the EU. The two sets of ten indicators used to  
228 produce the extrapolations were selected based on their availability in all the countries  
229 included and are not (always) specific to RSV. Future estimates generated with this  
230 approach should attempt to use a more RSV-aligned set of indicators (e.g., indoor and  
231 outdoor pollution, geographical and ecological factors, etc.). The estimates used for Stage 1  
232 were based on the overall number of hospitalisations with respiratory infections along with  
233 weekly test positives from laboratory data. The number of admissions and positive tests  
234 differed between the included countries, and as such, the estimates are still affected by  
235 country- or age-specific coding practices. Our estimates may differ from other studies using  
236 a similar approach because the Stage 1 results used depended on overall, non-age-specific  
237 virology data and the regression models were built with seasonal trends and polynomials  
238 [18]. It would be useful to provide estimates by year, as has been done for influenza-  
239 associated respiratory mortality for the EU [37], to assess temporal trends in RSV-associated  
240 hospitalisations and to produce more recent estimates to better understand how the  
241 COVID-19 pandemic has influenced RSV activity and its burdens such as infections,  
242 hospitalisations, and deaths.

243 There is also a lot of uncertainty due to low proportions of cases tested for RSV. These  
244 uncertainties may be mitigated only by using the observed number of admissions with a  
245 specific diagnosis or if laboratory confirmation of diagnosis (all cases tested), and lower  
246 sensitivity of testing methods in this age group are improved by combining polymerase  
247 chain reaction (PCR) and serology. With RSV, the reported burden of disease is broadly  
248 considered too low, a problem attributed to low levels of routine testing being used, and  
249 imperfect reporting of hospitalisation ICD-10 codes [38, 39]. In addition, routine diagnostic  
250 testing may not be appropriate for adults with RSV due to lower viral loads in adults  
251 compared to children [28, 40]. While the estimated burden of disease might be generally  
252 more uncertain, the high proportion of RSV-associated hospital admissions is more likely to  
253 reflect the overall healthcare burden and daily experiences of clinical professionals. The  
254 difference may even be larger in the elderly as this group is more often hospitalised due to  
255 other respiratory reasons than RSV and testing for RSV is probably done in only a limited  
256 number of elderly patients.

257 We have based this work on regression model estimates [which are not so dependent on  
258 high levels of RSV testing] to increase the comparability of the Stage 1 estimates [41] and to  
259 limit the risk of underestimating the RSV disease burden in adults (as there is less testing in  
260 this age group)[13]. Considering that the review of the literature found no eligible recent  
261 studies, there is a need for more data from more countries to generate improved estimates  
262 with less uncertainty as the uncertainty intervals given here are falsely narrow and do not  
263 capture all sources of uncertainty.

264 The main strength of this work is that we have used national data from several countries in  
265 a single agreed analysis framework to estimate the RSV-associated hospital admission

266 burden for the EU. Our estimates provide a key insight into the healthcare burden that may  
267 be associated with RSV infection and can be used to inform healthcare planning, priority  
268 setting and resource allocation. Our results are important for public health policy and  
269 practice as these estimates may guide development of RSV surveillance systems, provide  
270 baseline evidence for the introduction of future vaccines, and raise awareness to generate  
271 more granular data. These data should therefore contribute to decision-making and policy  
272 formulation to improve relevant prevention, diagnostics and healthcare service delivery for  
273 this population.

274 Table 1. Diagnosis codes used to identify respiratory diagnosis groups of the data sources that provided Stage 1 estimates

Author, year	Country	Period of observation	Age groups	Outcome coding
Johannesen et al., 2022	Denmark	2010-2017		
Johannesen et al., 2022	England	2007-2017		
Johannesen et al., 2022	Finland	2006-2016	0-2m, 3-5m, 6-11m, 1-2y, 3-4y, 5-17y, 18-64y, 65-74y, 75-84y, 85+y	ICD-10: Acute upper respiratory tract infection (URTI) (J00, J02-06); Pneumonia & influenza (J09-18); Bronchiolitis and bronchitis (J20-21, J40); Unspecified LRTI (J22)
Johannesen et al., 2022	Netherlands	2013-2017		
Johannesen et al., 2022	Norway	2008-2017		
Johannesen et al., 2022	Scotland	2010-2016		

275

276

277

278

279

280

281

282 Table 2: Estimated average annual RSV-associated hospitalisations by age groups in 28 EU countries (including the UK) and Norway

Average annual number of hospitalisations (95% confidence interval) per age group					
Country	18-64 years	65-74 years	75-84 years	≥85 years	≥65 years
<b>EU 28*</b>	13127 (10904, 15350)	32679 (27594, 37764)	74519 (69923, 79115)	37904 (32444, 43363)	145102 (129961, 160242)
<b>Austria</b>	202 (132, 272)	587 (433, 740)	1155 (1002, 1309)	614 (434, 795)	2356 (1869, 2844)
<b>Belgium</b>	332 (244, 420)	638 (456, 820)	1608 (1396, 1820)	1094 (852, 1335)	3340 (2704, 3975)
<b>Bulgaria</b>	207 (149, 265)	494 (346, 641)	1253 (1110, 1396)	412 (308, 516)	2159 (1764, 2553)
<b>Croatia</b>	94 (60, 127)	222 (146, 296)	737 (648, 825)	213 (151, 275)	1172 (945, 1396)
<b>Cyprus</b>	34 (27, 41)	55 (42, 68)	100 (88, 112)	46 (36, 56)	201 (166, 236)
<b>Czech Republic</b>	305 (220, 391)	736 (530, 941)	1252 (1091, 1413)	526 (374, 678)	2514 (1995, 3032)
<b>Denmark</b>	138 (94, 181)	396 (284, 509)	675 (584, 767)	188 (89, 287)	1259 (957, 1563)
<b>Estonia</b>	35 (24, 45)	62 (40, 85)	207 (180, 234)	84 (59, 108)	353 (279, 427)
<b>Finland</b>	26 (-16, 68)	55 (-56, 166)	795 (693, 896)	150 (38, 262)	1000 (675, 1324)
<b>France</b>	1637 (1153, 2121)	4244 (3172, 5316)	7662 (6471, 8854)	5901 (4258, 7543)	17807 (13901, 21713)
<b>Germany</b>	1393 (746, 2040)	5387 (3885, 6889)	13843 (11923, 15764)	4514 (2713, 6314)	23744 (18521, 28967)
<b>Greece</b>	249 (164, 334)	526 (331, 721)	2133 (1876, 2390)	967 (706, 1227)	3626 (2913, 4338)
<b>Hungary</b>	262 (181, 342)	679 (498, 859)	1332 (1163, 1500)	512 (360, 664)	2523 (2021, 3023)
<b>Ireland</b>	214 (178, 251)	322 (260, 385)	459 (402, 514)	224 (169, 279)	1005 (831, 1178)
<b>Italy</b>	1347 (876, 1817)	3603 (2444, 4762)	10531 (9126, 11936)	4419 (2818, 6021)	18553 (14388, 22719)
<b>Latvia</b>	43 (27, 59)	108 (72, 144)	341 (299, 383)	135 (100, 170)	584 (471, 697)
<b>Lithuania</b>	56 (33, 80)	159 (109, 208)	482 (421, 542)	231 (177, 286)	872 (707, 1036)
<b>Luxembourg</b>	21 (16, 25)	43 (35, 50)	59 (51, 67)	39 (30, 47)	141 (116, 164)
<b>Malta</b>	12 (9, 16)	37 (29, 46)	58 (50, 65)	20 (13, 26)	115 (92, 137)
<b>Netherlands</b>	429 (296, 561)	1000 (689, 1311)	1427 (1150, 1704)	1040 (751, 1328)	3467 (2590, 4343)
<b>Norway</b>	158 (117, 199)	651 (558, 744)	515 (441, 589)	393 (295, 491)	1559 (1294, 1824)
<b>Poland</b>	970 (645, 1295)	2254 (1685, 2823)	4445 (3851, 5039)	2246 (1690, 2802)	8945 (7226, 10664)
<b>Portugal</b>	252 (170, 333)	543 (352, 734)	1609 (1383, 1835)	943 (712, 1173)	3095 (2447, 3742)
<b>Romania</b>	738 (576, 900)	1422 (1100, 1745)	2759 (2393, 3125)	1430 (1162, 1699)	5611 (4655, 6569)
<b>Slovakia</b>	145 (98, 191)	386 (305, 466)	570 (501, 639)	249 (189, 308)	1205 (995, 1413)
<b>Slovenia</b>	44 (27, 61)	85 (51, 120)	311 (272, 350)	100 (64, 137)	496 (387, 607)

<b>Spain</b>	1031 (657, 1405)	2509 (1742, 3275)	5409 (4530, 6288)	3217 (2133, 4301)	11135 (8405, 13864)
<b>Sweden</b>	285 (211, 360)	681 (488, 876)	1220 (1048, 1392)	660 (445, 875)	2561 (1981, 3143)
<b>United Kingdom</b>	2896 (2039, 3752)	4846 (2860, 6832)	8625 (7034, 10216)	6002 (4028, 7976)	19473 (13922, 25024)

283

284 \*Includes United Kingdom and excludes Norway

285 Table 3: Estimated rates of annual RSV-associated hospitalisations by age groups per 1 000  
286 adults in 28 EU countries (including the UK) and Norway

Rate of hospitalisation per 1 000 adults (95% confidence interval) per age group				
Country	18-64 years	65-74 years	75-84 years	≥85 years
<b>EU 28*</b>	0.04 (0.03, 0.05)	0.66 (0.55, 0.76)	2.24 (2.10, 2.38)	2.99 (2.56, 3.42)
<b>Austria</b>	0.04 (0.02, 0.05)	0.69 (0.51, 0.87)	2.23 (1.94, 2.53)	2.86 (2.02, 3.70)
<b>Belgium</b>	0.05 (0.04, 0.06)	0.62 (0.45, 0.80)	2.23 (1.94, 2.53)	3.79 (2.95, 4.62)
<b>Bulgaria</b>	0.05 (0.03, 0.06)	0.59 (0.42, 0.77)	2.59 (2.29, 2.88)	3.30 (2.46, 4.14)
<b>Croatia</b>	0.04 (0.02, 0.05)	0.53 (0.35, 0.70)	2.46 (2.16, 2.75)	2.87 (2.03, 3.70)
<b>Cyprus</b>	0.06 (0.05, 0.07)	0.76 (0.58, 0.93)	2.53 (2.23, 2.82)	3.94 (3.10, 4.77)
<b>Czech Republic</b>	0.04 (0.03, 0.06)	0.64 (0.46, 0.82)	2.30 (2.00, 2.59)	2.89 (2.05, 3.72)
<b>Denmark</b>	0.04 (0.03, 0.05)	0.63 (0.45, 0.81)	2.19 (1.89, 2.49)	1.60 (0.76, 2.44)
<b>Estonia</b>	0.04 (0.03, 0.05)	0.49 (0.31, 0.67)	2.28 (1.99, 2.58)	2.87 (2.03, 3.71)
<b>Finland</b>	0.01 (0.00, 0.02)	0.09 (-.09, 0.27)	2.32 (2.03, 2.62)	1.12 (0.28, 1.96)
<b>France</b>	0.04 (0.03, 0.06)	0.70 (0.53, 0.88)	1.90 (1.60, 2.19)	3.01 (2.18, 3.85)
<b>Germany</b>	0.03 (0.01, 0.04)	0.64 (0.46, 0.82)	2.13 (1.83, 2.42)	2.10 (1.26, 2.94)
<b>Greece</b>	0.04 (0.02, 0.05)	0.48 (0.30, 0.66)	2.45 (2.15, 2.74)	3.10 (2.27, 3.94)
<b>Hungary</b>	0.04 (0.03, 0.05)	0.67 (0.49, 0.85)	2.33 (2.04, 2.63)	2.82 (1.99, 3.66)
<b>Ireland</b>	0.07 (0.06, 0.09)	0.92 (0.74, 1.10)	2.42 (2.13, 2.72)	3.37 (2.54, 4.21)
<b>Italy</b>	0.04 (0.02, 0.05)	0.55 (0.38, 0.73)	2.21 (1.92, 2.51)	2.31 (1.47, 3.14)
<b>Latvia</b>	0.03 (0.02, 0.05)	0.54 (0.36, 0.71)	2.40 (2.11, 2.70)	3.22 (2.38, 4.05)
<b>Lithuania</b>	0.03 (0.02, 0.04)	0.57 (0.39, 0.75)	2.35 (2.05, 2.64)	3.58 (2.75, 4.42)
<b>Luxembourg</b>	0.06 (0.04, 0.07)	1.02 (0.84, 1.20)	2.14 (1.84, 2.44)	3.82 (2.99, 4.66)
<b>Malta</b>	0.04 (0.03, 0.06)	0.78 (0.60, 0.96)	2.35 (2.05, 2.65)	2.64 (1.80, 3.49)
<b>Netherlands</b>	0.04 (0.03, 0.05)	0.58 (0.40, 0.76)	1.53 (1.23, 1.83)	3.02 (2.18, 3.86)
<b>Norway</b>	0.05 (0.04, 0.06)	1.37 (1.18, 1.57)	2.10 (1.80, 2.41)	3.42 (2.56, 4.27)
<b>Poland</b>	0.04 (0.03, 0.05)	0.70 (0.53, 0.88)	2.21 (1.91, 2.51)	3.38 (2.54, 4.21)
<b>Portugal</b>	0.04 (0.03, 0.05)	0.51 (0.33, 0.68)	2.10 (1.80, 2.40)	3.43 (2.59, 4.26)
<b>Romania</b>	0.06 (0.05, 0.07)	0.78 (0.61, 0.96)	2.22 (1.93, 2.52)	4.45 (3.61, 5.28)
<b>Slovakia</b>	0.04 (0.03, 0.05)	0.85 (0.68, 1.03)	2.43 (2.13, 2.72)	3.48 (2.65, 4.32)
<b>Slovenia</b>	0.03 (0.02, 0.05)	0.44 (0.26, 0.62)	2.37 (2.07, 2.66)	2.32 (1.48, 3.15)
<b>Spain</b>	0.03 (0.02, 0.05)	0.58 (0.40, 0.76)	1.82 (1.52, 2.11)	2.48 (1.65, 3.32)
<b>Sweden</b>	0.05 (0.04, 0.06)	0.63 (0.45, 0.81)	2.11 (1.81, 2.41)	2.58 (1.74, 3.42)
<b>United Kingdom</b>	0.07 (0.05, 0.09)	0.77 (0.46, 1.09)	2.31 (1.89, 2.74)	3.95 (2.65, 5.25)

287

288 \*Includes United Kingdom and excludes Norway

289

290

291

292

293



294 Table 4: Proportion of overall RSV-associated hospitalisations occurring in adults aged 18-64  
295 years, 65-74 years, 75-84 years and  $\geq 85$  years in the EU and in each country

Country	18-64 years	65-74 years	75-84 years	$\geq 85$ years	$\geq 65$ years
<b>EU 28*</b>	8.3	20.7	47.1	24.0	91.7
<b>Austria</b>	7.9	22.9	45.2	24.0	92.1
<b>Belgium</b>	9.0	17.4	43.8	29.8	91.0
<b>Bulgaria</b>	8.7	20.9	53.0	17.4	91.3
<b>Croatia</b>	7.4	17.5	58.2	16.8	92.6
<b>Cyprus</b>	14.5	23.4	42.6	19.6	85.5
<b>Czech Republic</b>	10.8	26.1	44.4	18.7	89.2
<b>Denmark</b>	9.9	28.3	48.3	13.5	90.1
<b>Estonia</b>	9.0	16.0	53.4	21.6	91.0
<b>Finland</b>	2.5	5.4	77.5	14.6	97.5
<b>France</b>	8.4	21.8	39.4	30.3	91.6
<b>Germany</b>	5.5	21.4	55.1	18.0	94.5
<b>Greece</b>	6.4	13.6	55.0	25.0	93.6
<b>Hungary</b>	9.4	24.4	47.8	18.4	90.6
<b>Ireland</b>	17.6	26.4	37.7	18.4	82.4
<b>Italy</b>	6.8	18.1	52.9	22.2	93.2
<b>Latvia</b>	6.9	17.2	54.4	21.5	93.1
<b>Lithuania</b>	6.0	17.1	51.9	24.9	94.0
<b>Luxembourg</b>	13.0	26.5	36.4	24.1	87.0
<b>Malta</b>	9.4	29.1	45.7	15.7	90.6
<b>Netherlands</b>	11.0	25.7	36.6	26.7	89.0
<b>Norway</b>	9.2	37.9	30.0	22.9	90.8
<b>Poland</b>	9.8	22.7	44.8	22.7	90.2
<b>Portugal</b>	7.5	16.2	48.1	28.2	92.5
<b>Romania</b>	11.6	22.4	43.5	22.5	88.4
<b>Slovakia</b>	10.7	28.6	42.2	18.4	89.3
<b>Slovenia</b>	8.1	15.7	57.6	18.5	91.9
<b>Spain</b>	8.5	20.6	44.5	26.4	91.5
<b>Sweden</b>	10.0	23.9	42.9	23.2	90.0
<b>United Kingdom</b>	12.9	21.7	38.6	26.8	87.1

296

297 \*Includes United Kingdom and excludes Norway

298

299

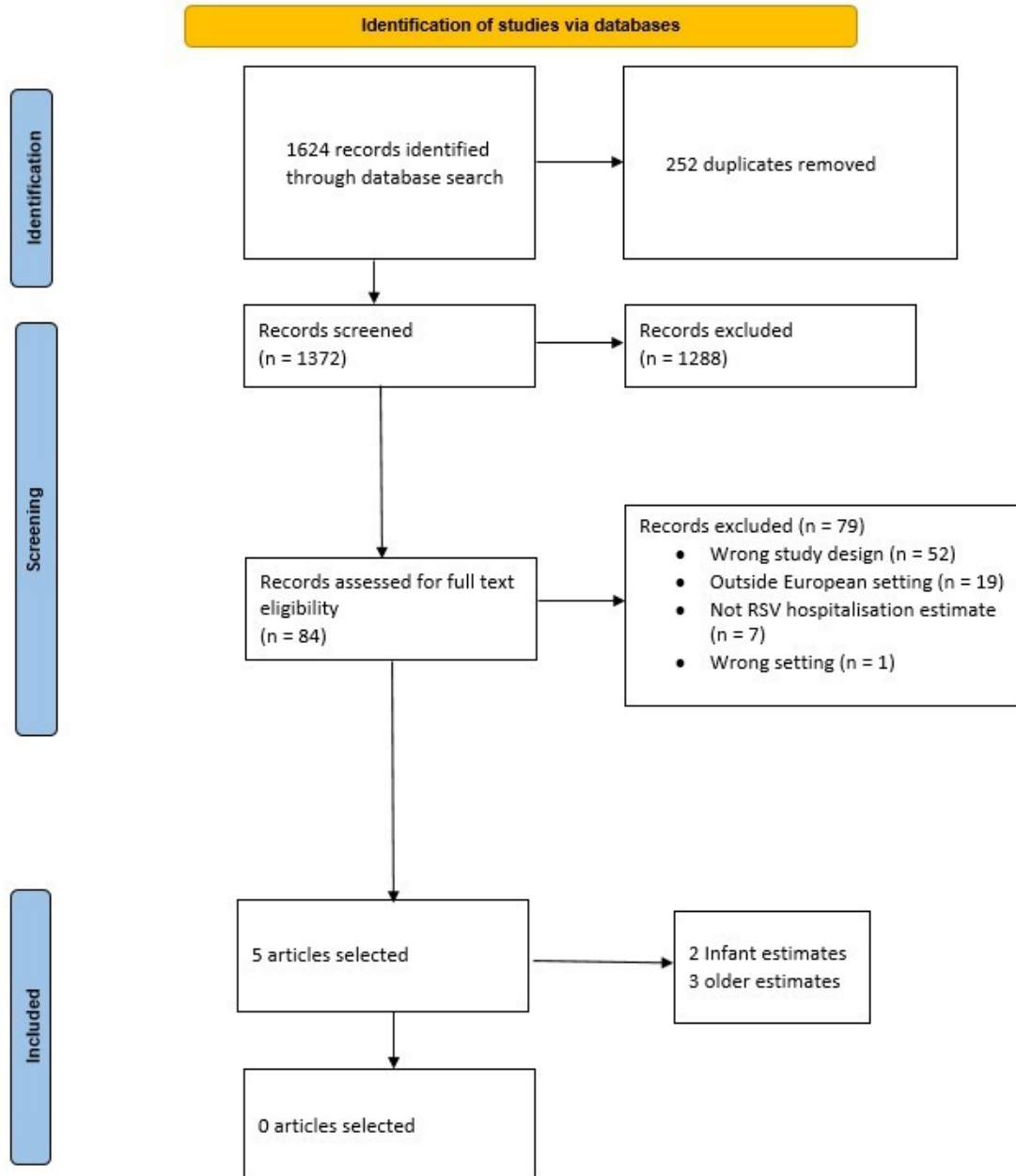


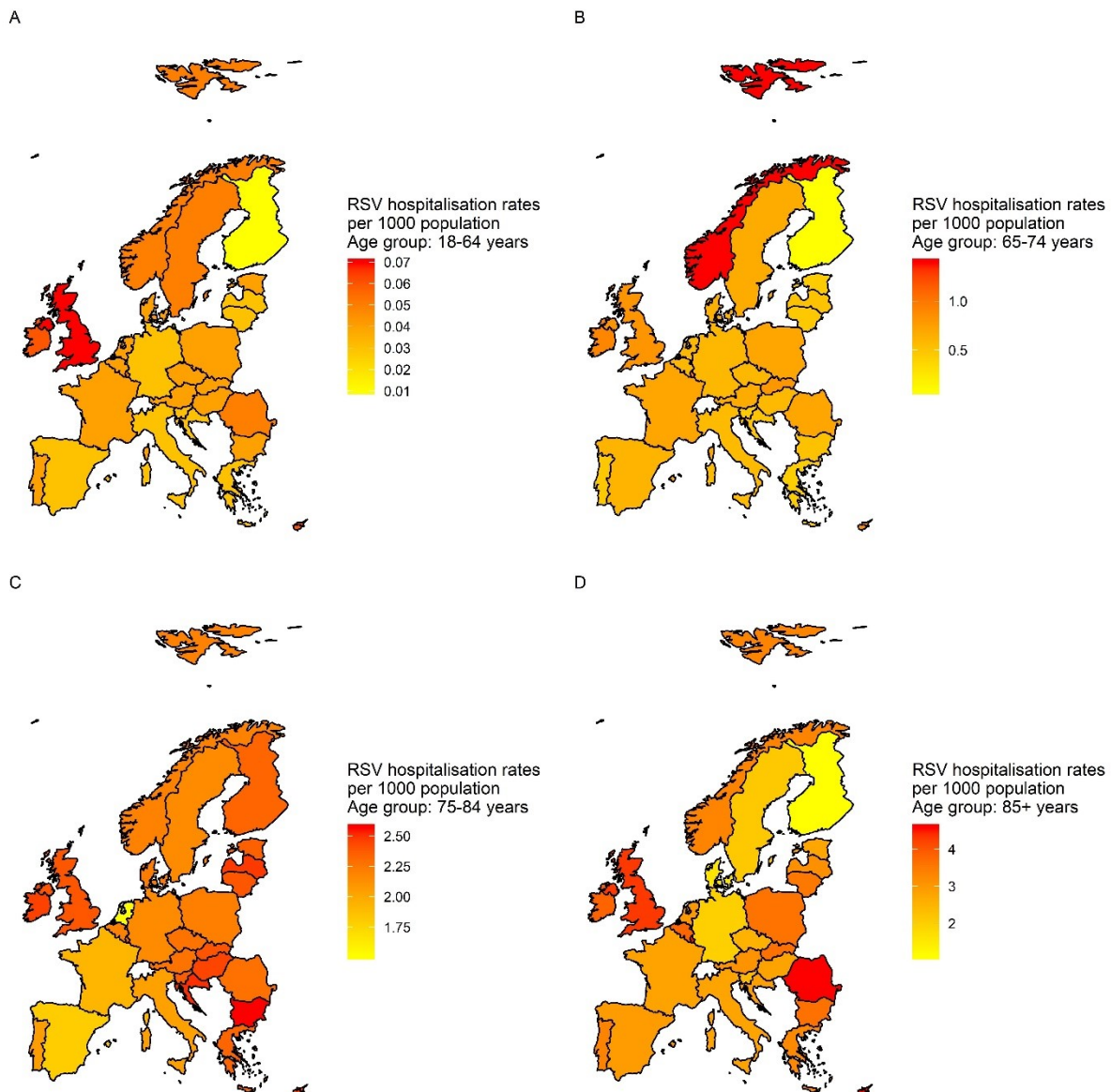
Figure 1: PRISMA flowchart outlining the search records of RSV-associated hospitalisation estimates in European countries

300

301 **Figure 1: PRISMA flowchart outlining the search records of RSV-associated hospitalisation**  
302 **estimates in European countries.**

303

304



305

306 **Figure 2: RSV-associated hospitalisation rates per 1000 population in 28 EU countries and**

307 **Norway.** A: RSV-associated hospitalisation rates per 1 000 in adults aged 18-64 years. B:

308 RSV-associated hospitalisation rates per 1 000 in adults aged 65-74 years. C: RSV-associated

309 hospitalisation rates per 1 000 in adults aged 75-84 years. D: RSV-associated hospitalisation

310 rates per 1 000 in adults aged ≥85 years.

311

312

313 **Footnote Page**

314 The RESCEU investigators are as follows:

315 Harish NAIR (University of Edinburgh), Harry CAMPBELL (University of Edinburgh), Philippe Beutels  
316 (Universiteit Antwerpen), Louis Bont (University Medical Center Utrecht), Andrew Pollard (University  
317 of Oxford), Peter Openshaw (Imperial College London), Federico Martinon-Torres (Servicio Galego de  
318 Saude), Terho Heikkinen (University of Turku and Turku University Hospital), Adam Meijer (National  
319 Institute for Public Health and the Environment), Thea K. Fischer (Statens Serum Institut), Maarten  
320 van den Berge (University of Groningen), Carlo Giaquinto (PENTA Foundation), Michael Abram  
321 (AstraZeneca), Kena Swanson (Pfizer), Bishoy Rizkalla (GlaxoSmithKline), Charlotte Vernhes (Sanofi  
322 Pasteur), Scott Gallichan (Sanofi Pasteur), Jeroen Aerssens (Janssen), Veena Kumar (Novavax), Eva  
323 Molero (Team-It Research).

324 **Financial support**

325 This work is part of RESCEU. RESCEU has received funding from the Innovative Medicines Initiative 2  
326 Joint Undertaking under grant agreement No 116019. This Joint Undertaking receives support from  
327 the European Union's Horizon 2020 research and innovation programme and EFPIA. This  
328 publication only reflects the author's view and the JU is not responsible for any use that may be  
329 made of the information it contains herein.

330 **Disclaimer**

331 Data from the Norwegian Patient Registry have been used in this publication. The interpretation and  
332 reporting of these data are the sole responsibility of the authors, and no endorsement by the  
333 Norwegian Patient Registry is intended nor should be inferred. This work reflects only the author's  
334 views and opinions. The EC is not responsible for any use that may be made of the information it  
335 contains.

## 336 Potential conflict of interests

337 HC reports grants, personal fees, and nonfinancial support from World Health Organization. Grants  
338 and personal fees from Sanofi Pasteur. Grants from Bill and Melinda Gates Foundation. All payments  
339 were made via the University of Edinburgh. HC is a shareholder in the Journal of Global Health  
340 Ltd. JP declares that Nivel has received unrestricted research grants regarding the epidemiology of  
341 RSV from Sanofi Pasteur and IMI in the past 12 months. All other authors report no potential  
342 conflicts.

343

## 344 Reference

- 345 1. Branche AR, Falsey AR. Respiratory syncytial virus infection in older adults: an under-  
346 recognized problem. *Drugs Aging*. 2015;32(4):261-9.
- 347 2. Atamna A, Babich T, Froimovici D, Yahav D, Sorek N, Ben-Zvi H, et al. Morbidity and mortality  
348 of respiratory syncytial virus infection in hospitalized adults: Comparison with seasonal influenza. *Int*  
349 *J Infect Dis*. 2021;103:489-93.
- 350 3. Falsey AR, McElhanev JE, Beran J, van Essen GA, Duval X, Esen M, et al. Respiratory syncytial  
351 virus and other respiratory viral infections in older adults with moderate to severe influenza-like  
352 illness. *J Infect Dis*. 2014;209(12):1873-81.
- 353 4. Volling C, Hassan K, Mazzulli T, Green K, Al-Den A, Hunter P, et al. Respiratory syncytial virus  
354 infection-associated hospitalization in adults: a retrospective cohort study. *BMC Infectious Diseases*.  
355 2014;14(665):1471-2334.
- 356 5. Widmer K, Griffin MR, Zhu Y, Williams JV, Talbot HK. Respiratory syncytial virus- and human  
357 metapneumovirus-associated emergency department and hospital burden in adults. *Influenza Other*  
358 *Respir Viruses*. 2014;8(3):347-52.
- 359 6. Naorat S, Chittaganpitch M, Thamthitiwat S, Hanchaichon S, Sawatwong P, Srisaengchai P, et  
360 al. Hospitalizations for acute lower respiratory tract infection due to respiratory syncytial virus in  
361 Thailand, 2008-2011. *J Infect Dis*. 2013;208 Suppl 3:S238-45.
- 362 7. Lee N, Lui GC, Wong KT, Li TC, Tse EC, Chan JY, et al. High morbidity and mortality in adults  
363 hospitalized for respiratory syncytial virus infections. *Clin Infect Dis*. 2013;57(8):1069-77.
- 364 8. Pastula ST, Hackett J, Coalson J, Jiang X, Villafana T, Ambrose C, et al. Hospitalizations for  
365 Respiratory Syncytial Virus Among Adults in the United States, 1997-2012. *Open Forum Infect Dis*.  
366 2017;4(1):ofw270.
- 367 9. Loubet P, Lenzi N, Valette M, Foulongne V, Krivine A, Houhou N, et al. Clinical characteristics  
368 and outcome of respiratory syncytial virus infection among adults hospitalized with influenza-like  
369 illness in France. *Clin Microbiol Infect*. 2017;23(4):253-9.
- 370 10. Branche AR, Saiman L, Walsh EE, Falsey AR, Sieling WD, Greendyke W, et al. Incidence of  
371 Respiratory Syncytial Virus Infection Among Hospitalized Adults, 2017-2020. *Clin Infect Dis*.  
372 2022;74(6):1004-11.
- 373 11. Tin Tin Htar M, Yerramalla MS, Moisi JC, Swerdlow DL. The burden of respiratory syncytial  
374 virus in adults: a systematic review and meta-analysis. *Epidemiol Infect*. 2020;148:e48.
- 375 12. Shi T, Denouel A, Tietjen AK, Campbell I, Moran E, Li X, et al. Global Disease Burden  
376 Estimates of Respiratory Syncytial Virus-Associated Acute Respiratory Infection in Older Adults in  
377 2015: A Systematic Review and Meta-Analysis. *J Infect Dis*. 2020;222(Suppl 7):S577-S83.

- 378 13. Onwuchekwa C, Moreo LM, Menon S, Machado B, Curcio D, Kalina W, et al. Under-  
379 ascertainment of Respiratory Syncytial Virus infection in adults due to diagnostic testing limitations:  
380 A systematic literature review and meta-analysis. *J Infect Dis*. 2023.
- 381 14. Hansen CL, Chaves SS, Demont C, Viboud C. Mortality Associated With Influenza and  
382 Respiratory Syncytial Virus in the US, 1999-2018. *JAMA Netw Open*. 2022;5(2):e220527.
- 383 15. Allen JC, Toapanta FR, Chen W, Tennant SM. Understanding immunosenescence and its  
384 impact on vaccination of older adults. *Vaccine*. 2020;38(52):8264-72.
- 385 16. Yarnall AJ, Sayer AA, Clegg A, Rockwood K, Parker S, Hindle JV. New horizons in  
386 multimorbidity in older adults. *Age Ageing*. 2017;46(6):882-8.
- 387 17. Falsey AR. Editorial commentary: respiratory syncytial virus: a global pathogen in an aging  
388 world. *Clin Infect Dis*. 2013;57(8):1078-80.
- 389 18. Johannesen CK, van Wijhe M, Tong S, Fernandez LV, Heikkinen T, van Boven M, et al. Age-  
390 Specific Estimates of Respiratory Syncytial Virus-Associated Hospitalizations in 6 European Countries:  
391 A Time Series Analysis. *J Infect Dis*. 2022;226:S29-S37.
- 392 19. Page MJ, McKenzie JE, Bossuyt PM, Boutron I, Hoffmann TC, Mulrow CD, et al. The PRISMA  
393 2020 statement: an updated guideline for reporting systematic reviews. *BMJ*. 2021;372:n71.
- 394 20. Simonsen L, Spreeuwenberg P, Lustig R, Taylor RJ, Fleming DM, Kroneman M, et al. Global  
395 mortality estimates for the 2009 Influenza Pandemic from the GLaMOR project: a modeling study.  
396 *PLoS Med*. 2013;10(11):e1001558.
- 397 21. Mangtani P, Hajat S, Kovats S, Wilkinson P, Armstrong B. The Association of Respiratory  
398 Syncytial Virus Infection and Influenza with Emergency Admissions for Respiratory Disease in  
399 London: An Analysis of Routine Surveillance Data. *Clinical Infectious Disease*. 2006;42(5):640-6.
- 400 22. Muller-Pebody B, Crowcroft NS, Zambon MC, Edmunds WJ. Modelling hospital admissions  
401 for lower respiratory tract infections in the elderly in England. *Epidemiol Infect*. 2006;134(6):1150-7.
- 402 23. Sharp A, Minaji M, Panagiotopoulos N, Reeves R, Charlett A, Pebody R. Estimating the  
403 burden of adult hospital admissions due to RSV and other respiratory pathogens in England.  
404 *Influenza Other Respir Viruses*. 2022;16(1):125-31.
- 405 24. Korsten K, Adriaenssens N, Coenen S, Butler C, Ravanfar B, Rutter H, et al. Burden of  
406 respiratory syncytial virus infection in community-dwelling older adults in Europe (RESCEU): an  
407 international prospective cohort study. *Eur Respir J*. 2021;57(4).
- 408 25. Del Riccio M, Spreeuwenberg P, Osei-Yeboah R, Klint Johannesen C, Vazquez Fernandez L,  
409 Teirlinck A, et al. Defining the Burden of Disease of RSV in Europe: estimates of RSV-associated  
410 hospitalisations in children under 5 years of age. A systematic review and modelling study. *medRxiv*  
411 [Preprint]. 2023.
- 412 26. Branche AR, Saiman L, Walsh EE, Falsey AR, Jia H, Barrett A, et al. Change in functional status  
413 associated with respiratory syncytial virus infection in hospitalized older adults. *Influenza Other*  
414 *Respir Viruses*. 2022;16(6):1151-60.
- 415 27. Boattini M, Almeida A, Christaki E, Marques TM, Tosatto V, Bianco G, et al. Severity of RSV  
416 infection in Southern European elderly patients during two consecutive winter seasons (2017-2018).  
417 *J Med Virol*. 2021;93(8):5152-7.
- 418 28. Talbot HK, Belongia EA, Walsh EE, Schaffner W. Respiratory Syncytial Virus in Older Adults: A  
419 Hidden Annual Epidemic. *Infectious Diseases in Clinical Practice*. 2016;24(6):295-302.
- 420 29. Fleming DM, Taylor RJ, Lustig RL, Schuck-Paim C, Haguet F, Webb DJ, et al. Modelling  
421 estimates of the burden of Respiratory Syncytial virus infection in adults and the elderly in the  
422 United Kingdom. *BMC Infect Dis*. 2015;15:443.
- 423 30. Colosia AD, Yang J, Hillson E, Mausekopf J, Copley-Merriman C, Shinde V, et al. The  
424 epidemiology of medically attended respiratory syncytial virus in older adults in the United States: A  
425 systematic review. *PLoS One*. 2017;12(8):e0182321.
- 426 31. Bruyndonckx R, Coenen S, Butler C, Verheij T, Little P, Hens N, et al. Respiratory syncytial  
427 virus and influenza virus infection in adult primary care patients: Association of age with prevalence,  
428 diagnostic features and illness course. *Int J Infect Dis*. 2020;95:384-90.

- 429 32. Sundaram ME, Meece JK, Sifakis F, Gasser RA, Jr., Belongia EA. Medically attended  
430 respiratory syncytial virus infections in adults aged  $\geq$  50 years: clinical characteristics and  
431 outcomes. *Clin Infect Dis*. 2014;58(3):342-9.
- 432 33. McClure DL, Kieke BA, Sundaram ME, Simpson MD, Meece JK, Sifakis F, et al. Seasonal  
433 incidence of medically attended respiratory syncytial virus infection in a community cohort of adults  
434  $\geq$ 50 years old. *PLoS One*. 2014;9(7):e102586.
- 435 34. McLaughlin JM, Khan F, Begier E, Swerdlow DL, Jodar L, Falsey AR. Rates of Medically  
436 Attended RSV Among US Adults: A Systematic Review and Meta-analysis. *Open Forum Infect Dis*.  
437 2022;9(7):ofac300.
- 438 35. Rafferty E, Paulden M, Buchan SA, Robinson JL, Bettinger JA, Kumar M, et al. Evaluating the  
439 Individual Healthcare Costs and Burden of Disease Associated with RSV Across Age Groups.  
440 *Pharmacoeconomics*. 2022;40(6):633-45.
- 441 36. Belongia EA, King JP, Kieke BA, Pluta J, Al-Hilli A, Meece JK, et al. Clinical Features, Severity,  
442 and Incidence of RSV Illness During 12 Consecutive Seasons in a Community Cohort of Adults  $\geq$ 60  
443 Years Old. *Open Forum Infect Dis*. 2018;5(12):ofy316.
- 444 37. Paget J, Danielle Iuliano A, Taylor RJ, Simonsen L, Viboud C, Spreeuwenberg P, et al.  
445 Estimates of mortality associated with seasonal influenza for the European Union from the GLaMOR  
446 project. *Vaccine*. 2022;40(9):1361-9.
- 447 38. Cai W, Tolksdorf K, Hirve S, Schuler E, Zhang W, Haas W, et al. Evaluation of using ICD-10  
448 code data for respiratory syncytial virus surveillance. *Influenza Other Respir Viruses*. 2020;14(6):630-  
449 7.
- 450 39. Hamilton MA, Calzavara A, Emerson SD, Djebli M, Sundaram ME, Chan AK, et al. Validating  
451 International Classification of Disease 10th Revision algorithms for identifying influenza and  
452 respiratory syncytial virus hospitalizations. *PLoS One*. 2021;16(1):e0244746.
- 453 40. Coultas JA, Smyth R, Openshaw PJ. Respiratory syncytial virus (RSV): a scourge from infancy  
454 to old age. *Thorax*. 2019;74(10):986-93.
- 455 41. Paget J, Staadegaard L, Wang X, Li Y, van Pomeran T, van Summeren J, et al. Global and  
456 national influenza-associated hospitalisation rates: Estimates for 40 countries and administrative  
457 regions. *J Glob Health*. 2023;13:04003.

458