

# Supplementary Materials for “*Medium-term scenarios of COVID-19 as a function of immune uncertainties and chronic disease*”

Chadi M. Saad-Roy<sup>1,2,3</sup>      Sinead E. Morris<sup>4</sup>      Rachel E. Baker<sup>5,6</sup>  
Jeremy Farrar<sup>7</sup>      Andrea L. Graham<sup>8</sup>      Simon A. Levin<sup>8</sup>  
Caroline E. Wagner<sup>9</sup>      C. Jessica. E. Metcalf<sup>8,10</sup>      Bryan T. Grenfell<sup>8,10</sup>

<sup>1</sup>Lewis-Sigler Institute for Integrative Genomics, Princeton University

<sup>2</sup>Miller Institute for Basic Research in Science, University of California, Berkeley

<sup>3</sup>Department of Integrative Biology, University of California, Berkeley

<sup>4</sup>Department of Pathology and Cell Biology, Columbia University Medical Center

<sup>5</sup>Department of Epidemiology, Brown University

<sup>6</sup>Institute at Brown for Environment and Society, Brown University

<sup>7</sup>The Wellcome Trust

<sup>8</sup>Department of Ecology and Evolutionary Biology, Princeton University

<sup>9</sup>Department of Bioengineering, McGill University

<sup>10</sup>School of Public and International Affairs, Princeton University

## Framework

### Model equations

The model equations extend those of [8]. The new state variables are:  $I_T$  and  $I_Q$  denoting the fraction of individuals with tertiary and quaternary infections, respectively;  $S_T$  and  $S_Q$  denoting the fraction of individuals with waned susceptibility after a tertiary and quaternary exposure, respectively;  $V_S$  and  $V_T$  denoting the fraction of individuals vaccinated after a first and second (and beyond) exposure, respectively; and  $R_P$ ,  $R_S$ , and  $R_T$  denoting the fraction of individuals recovered (with complete immunity) from a primary, secondary, and tertiary (and beyond) infection, respectively. Additionally,  $\varepsilon_S$ ,  $\varepsilon_T$ , and  $\varepsilon_Q$  are the relative susceptibility of a secondary, tertiary, and quaternary infection, respectively;  $\alpha_S$ ,  $\alpha_T$ , and  $\alpha_Q$  are the relative transmissibility of a secondary, tertiary, and quaternary infection, respectively.

All other parameters are as in [8]. The (seasonal) transmission rate at time  $t$  is denoted  $\beta(t)$  (see [27]); the vaccination rate is denoted  $\nu$ , and  $s_{\text{vax}} = 1$  when there is vaccination (otherwise  $s_{\text{vax}} = 0$ ); the recovery rate is denoted  $\gamma$ ; the birth/death rate is denoted  $\mu$ ; and the rates of waning natural and vaccinal immunity are denoted  $\delta$  and  $\delta_{\text{vax}}$ , respectively (and thus the average durations of natural and vaccinal immunity following one exposure are  $\frac{1}{\delta}$  and  $\frac{1}{\delta_{\text{vax}}}$ , respectively).

The model equations are

$$\frac{dS_P}{dt} = \mu - \beta(t)S_P(I_P + \alpha_S I_S + \alpha_T I_T + \alpha_Q I_Q) - \mu S_P - s_{\text{vax}}\nu S_P, \quad (1a)$$

$$\frac{dI_P}{dt} = \beta(t)S_P(I_P + \alpha_S I_S + \alpha_T I_T + \alpha_Q I_Q) - (\gamma + \mu)I_P, \quad (1b)$$

$$\frac{dR_P}{dt} = \gamma I_P - (\delta + \mu + s_{\text{vax}}\nu)R_P, \quad (1c)$$

$$\frac{dR_S}{dt} = \gamma I_S - (\delta + \mu + s_{\text{vax}}\nu)R_S, \quad (1d)$$

$$\frac{dR_T}{dt} = \gamma(I_T + I_Q) - (\delta + \mu)R_T, \quad (1e)$$

$$\frac{dS_S}{dt} = \delta R_P - \varepsilon_S \beta(t)S_S(I_P + \alpha_S I_S + \alpha_T I_T + \alpha_Q I_Q) - \mu S_S + \delta_{\text{vax}}V_P - s_{\text{vax}}\nu S_S, \quad (1f)$$

$$\frac{dS_T}{dt} = \delta R_S - \varepsilon_T \beta(t)S_T(I_P + \alpha_S I_S + \alpha_T I_T + \alpha_Q I_Q) - \mu S_T + \delta_{\text{vax}}V_S - s_{\text{vax}}\nu S_T, \quad (1g)$$

$$\frac{dS_Q}{dt} = \delta R_T - \varepsilon_Q \beta(t)S_Q(I_P + \alpha_S I_S + \alpha_T I_T + \alpha_Q I_Q) - \mu S_Q + \delta_{\text{vax}}V_T - s_{\text{vax}}\nu S_Q, \quad (1h)$$

$$\frac{dI_S}{dt} = \varepsilon_S \beta(t)S_S(I_P + \alpha_S I_S + \alpha_T I_T + \alpha_Q I_Q) - (\gamma + \mu)I_S, \quad (1i)$$

$$\frac{dI_T}{dt} = \varepsilon_T \beta(t)S_T(I_P + \alpha_S I_S + \alpha_T I_T + \alpha_Q I_Q) - (\gamma + \mu)I_T, \quad (1j)$$

$$\frac{dI_Q}{dt} = \varepsilon_Q \beta(t)S_Q(I_P + \alpha_S I_S + \alpha_T I_T + \alpha_Q I_Q) - (\gamma + \mu)I_Q, \quad (1k)$$

$$\frac{dV_P}{dt} = s_{\text{vax}}\nu S_P - \delta_{\text{vax}}V_P - \mu V_P - s_{\text{vax}}\nu V_P, \quad (1l)$$

$$\frac{dV_S}{dt} = s_{\text{vax}}\nu S_S + s_{\text{vax}}\nu R_P + s_{\text{vax}}\nu V_P - \delta_{\text{vax}}V_S - \mu V_S - s_{\text{vax}}\nu V_S, \quad (1m)$$

$$\frac{dV_T}{dt} = s_{\text{vax}}\nu(S_T + S_Q) + s_{\text{vax}}\nu R_S + s_{\text{vax}}\nu V_S - \delta_{\text{vax}}V_T - \mu V_T. \quad (1n)$$

In all our scenarios, we set  $\alpha_P = \alpha_S = \alpha_T = \alpha_Q = 1$ . We also set  $\varepsilon_S = \varepsilon$ ,  $\varepsilon_T = \varepsilon^{2^n}$ , and  $\varepsilon_Q = \varepsilon^{3^n}$ .

## Calculating Average E and S

We calculate Avg E as follows. First, this quantity is defined for weeks  $t$  only when  $S_S(t) + S_T(t) + S_Q(t) > 0$ , *i.e.* there are some individuals that are susceptible to reinfection. Then,

$$\text{Avg. E}(t) = \frac{\varepsilon S_S(t) + \varepsilon^{2^n} S_T(t) + \varepsilon^{3^n} S_Q(t)}{S_S(t) + S_T(t) + S_Q(t)}.$$

We calculate Avg S as

$$\text{Avg. S}(t) = S_P(t) + \varepsilon S_S(t) + \varepsilon^{2^n} S_T(t) + \varepsilon^{3^n} S_Q(t).$$

## Modelling clinically important ‘Long COVID’ cases

To model the fraction of individuals  $L$  with a clinically important (Long COVID) case, we assume that a fraction  $f_P$ ,  $f_S$ ,  $f_T$ , and  $f_Q$  of primary, secondary, tertiary, and quaternary infections lead to Long COVID. Furthermore, we assume that the average duration of Long COVID is  $\frac{1}{\Phi}$ . Thus, we obtain that

$$\begin{aligned} \frac{dL}{dt} = & f_P \beta(t) S_P (I_P + \alpha_S I_S + \alpha_T I_T + \alpha_Q I_Q) + f_S \varepsilon_S \beta(t) S_S (I_P + \alpha_S I_S + \alpha_T I_T + \alpha_Q I_Q) \\ & + f_T \varepsilon_T \beta(t) S_T (I_P + \alpha_S I_S + \alpha_T I_T + \alpha_Q I_Q) + f_Q \varepsilon_Q \beta(t) S_Q (I_P + \alpha_S I_S + \alpha_T I_T + \alpha_Q I_Q) - \Phi L. \end{aligned} \quad (2)$$

We further assume that  $f_S = p f_P$ ,  $f_T = p f_S = p^2 f_P$ , and  $f_Q = p f_T = p^3 f_S = p^3 f_P$ . We set  $f_P = 0.3$ , and vary  $p$  for optimistic and pessimistic scenarios, and we set  $\frac{1}{\Phi} = 1$  year.

## Accumulation of immunity, total cases, and clinical severity

In Figure S1, we examine the combined effects of immunity accumulation, relative susceptibility to secondary infection, and decreases in severity due to prior exposure on the number and severity of infections. In the more pessimistic - but arguably likely - situation where the duration of complete natural and vaccinal immunity is short (*top row, left panel*, Fig. S1) and the relative

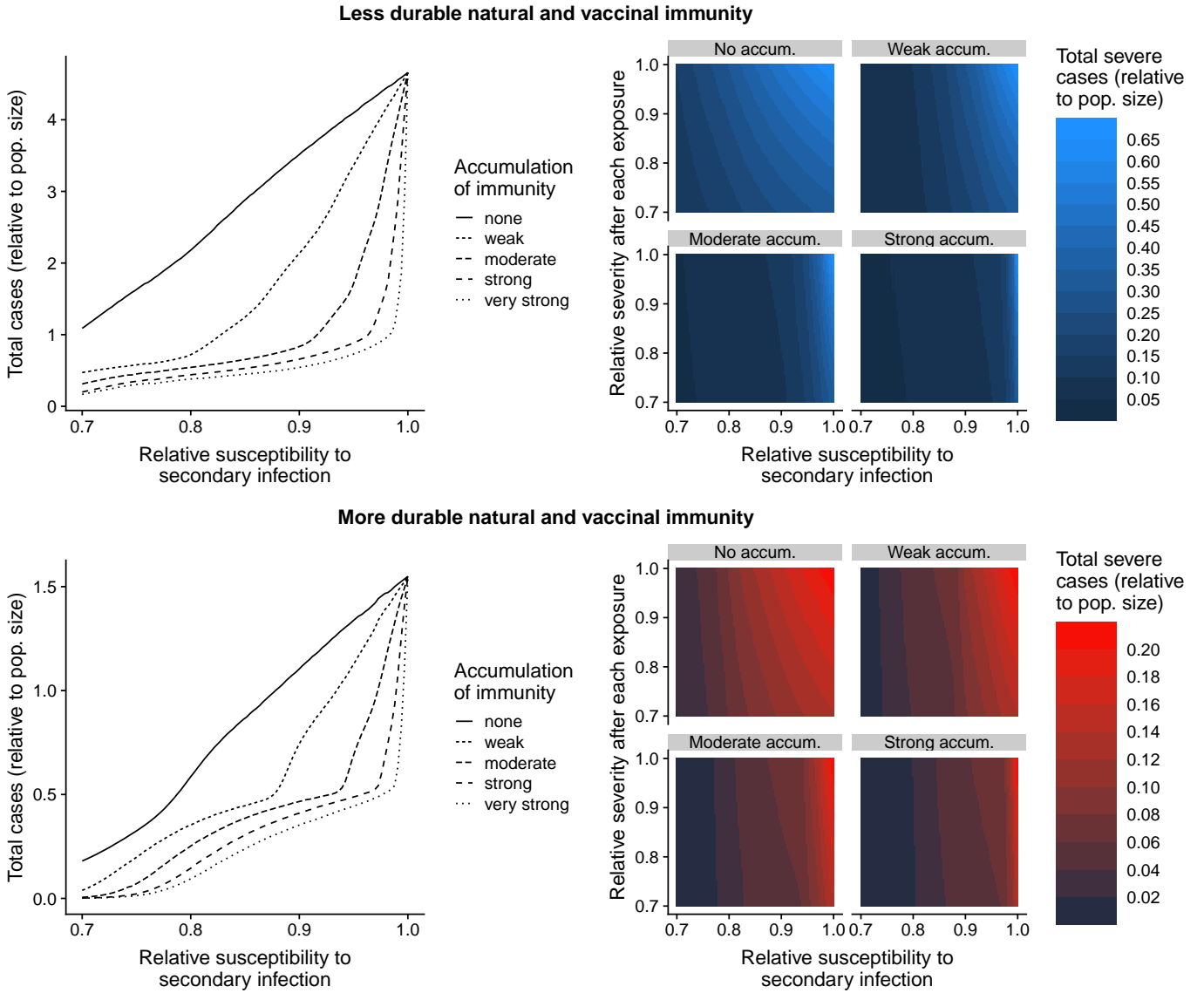


Figure S1: Total and severe cases (after week 52 and up to week 260) as a function of the relative susceptibility to secondary infection and the accumulation of immunity, for (*Top row*) less durable natural and vaccinal immunity ( $\delta = \frac{1}{0.25(52)}, \delta_{\text{vax}} = \frac{1}{0.33(52)}$ ) and (*Bottom row*) more durable natural and vaccinal immunity ( $\delta = \frac{1}{2(0.25(52))}, \delta_{\text{vax}} = \frac{1}{2(0.33(52))}$ ). In the right panel of each row, the total severe cases are also a function of the change in severity after each exposure.

susceptibility to secondary infection is high, individuals are expected to experience multiple infections in the medium-term (*top row, left panel*, Fig. S1). Furthermore, either an increase in accumulation of immunity or a decrease in relative susceptibility to secondary infections tempers the fraction of total cases (*top row, left panel*, Fig. S1), and these two characteristics of host immune responses act synergistically to reduce infections. Finally, as long as some immunity accumulates after subsequent exposures, the rapidity of this accumulation becomes increasingly irrelevant as the relative susceptibility to secondary infection decreases.

Next, in order to examine the potential range of clinical outcomes, we assume that each exposure leads to host immune responses that decrease the subsequent likelihood of experiencing a severe infection (up to quaternary infections). If there is no or weak accumulation of transmission-blocking immunity against infection, then the degree to which a prior exposure protects against severe disease can have a substantial effect on the number of severe infections, particularly when the relative susceptibility to secondary infection is high (*top row, right panel*, Fig. S1). If transmission-blocking immunity accumulates more strongly, then protection against severe disease becomes increasingly less important (*top row, right panel*, Fig. S1). Intuitively, this is due to transmission-blocking immunity limiting infections and thus decreasing the overall potential for severe disease.

Finally, we contrast the above results with epidemiological outcomes in a more optimistic situation with longer-lasting complete natural and vaccinal immunity (*bottom row*, Fig. S1). In this setting, we find that the number of infections (and those that are clinically relevant) are substantially lower than when the duration of immunity is shorter. However, the accumulation of immunity and the relative susceptibility to secondary infection remain important determinants of epidemiological outcomes.

## References

- [1] K Koelle, MA Martin, R Antia, B Lopman, NE Dean, The changing epidemiology of SARS-CoV-2. *Science* **375**, 1116–1121 (2022).
- [2] LR Baden, et al., Efficacy and safety of the mRNA-1273 SARS-CoV-2 vaccine. *New England Journal of Medicine* **384**, 403–416 (2021) PMID: 33378609.
- [3] FP Polack, et al., Safety and efficacy of the BNT162b2 mRNA Covid-19 vaccine. *New England Journal of Medicine* **383**, 2603–2615 (2020) PMID: 33301246.
- [4] M Voysey, et al., Safety and efficacy of the ChAdOx1 nCoV-19 vaccine (AZD1222) against SARS-CoV-2: an interim analysis of four randomised controlled trials in Brazil, South Africa, and the UK. *The Lancet* **397**, 99–111 (2021).
- [5] HAD King, et al., Efficacy and breadth of adjuvanted SARS-CoV-2 receptor-binding domain nanoparticle vaccine in macaques. *Proceedings of the National Academy of Sciences* **118**, e2106433118 (2021).
- [6] DR Martinez, et al., Chimeric spike mRNA vaccines protect against Sarbecovirus challenge in mice. *Science* **373**, 991–998 (2021).
- [7] AA Cohen, et al., Mosaic RBD nanoparticles protect against challenge by diverse sarbecoviruses in animal models. *Science* **377**, eabq0839 (2022).
- [8] CM Saad-Roy, et al., Immune life history, vaccination, and the dynamics of SARS-CoV-2 over the next 5 years. *Science* **370**, 811–818 (2020).
- [9] CM Saad-Roy, SA Levin, CJE Metcalf, BT Grenfell, Trajectory of individual immunity and vaccination required for SARS-CoV-2 community immunity: a conceptual investigation. *Journal of The Royal Society Interface* **18**, 20200683 (2021).
- [10] CM Saad-Roy, et al., Epidemiological and evolutionary considerations of SARS-CoV-2 vaccine dosing regimes. *Science* **372**, 363–370 (2021).
- [11] CE Wagner, et al., Vaccine nationalism and the dynamics and control of SARS-CoV-2. *Science* **373**, eabj7364 (2021).
- [12] CM Saad-Roy, et al., Vaccine breakthrough and the invasion dynamics of SARS-CoV-2 variants. *medRxiv*, 10.1101/2021.12.13.21267725 (2021).
- [13] CM Saad-Roy, CJE Metcalf, BT Grenfell, Immuno-epidemiology and the predictability of viral evolution. *Science* **376**, 1161–1162 (2022).
- [14] MW Tenforde, et al., Association Between mRNA Vaccination and COVID-19 Hospitalization and Disease Severity. *JAMA* **326**, 2043–2054 (2021).

- [15] LJ Abu-Raddad, et al., Effect of mRNA Vaccine Boosters against SARS-CoV-2 Omicron Infection in Qatar. *New England Journal of Medicine*, DOI: 10.1056/NEJMoa2200797 (2022).
- [16] JL Hirschtick, et al., Population-Based Estimates of Post-acute Sequelae of Severe Acute Respiratory Syndrome Coronavirus 2 (SARS-CoV-2) Infection (PASC) Prevalence and Characteristics. *Clinical Infectious Diseases* **73**, 2055–2064 (2021).
- [17] M Michelen, et al., Characterising long COVID: a living systematic review. *BMJ Global Health* **6**, e005427 (2021).
- [18] E Xu, Y Xie, Z Al-Aly, Long-term neurologic outcomes of COVID-19. *Nature Medicine* (2022).
- [19] J Fonager, et al., Molecular epidemiology of the SARS-CoV-2 variant Omicron BA.2 sub-lineage in Denmark, 29 November 2021 to 2 January 2022. *Eurosurveillance* **27**, 2200181 (2022).
- [20] SE Morris, et al., Demographic buffering: titrating the effects of birth rate and imperfect immunity on epidemic dynamics. *Journal of The Royal Society Interface* **12**, 20141245 (2015).
- [21] CJ Reynolds, et al., Immune boosting by B.1.1.529 Omicron depends on previous SARS-CoV-2 exposure. *Science* **377**, eabq1841 (2022).
- [22] JS Lavine, ON Bjornstad, R Antia, Immunological characteristics govern the transition of COVID-19 to endemicity. *Science* **371**, 741–745 (2021).
- [23] NG Davies, et al., Age-dependent effects in the transmission and control of COVID-19 epidemics. *Nature Medicine* **26**, 1205–1211 (2020).
- [24] K Sun, et al., Transmission heterogeneities, kinetics, and controllability of SARS-CoV-2. *Science* **371**, eabe2424 (2021).
- [25] R Laxminarayan, et al., Epidemiology and transmission dynamics of COVID-19 in two Indian states. *Science* **370**, 691–697 (2020).
- [26] W Ndifon, NS Wingreen, SA Levin, Differential neutralization efficiency of hemagglutinin epitopes, antibody interference, and the design of influenza vaccines. *Proceedings of the National Academy of Sciences* **106**, 8701–8706 (2009).
- [27] RE Baker, W Yang, GA Vecchi, CJE Metcalf, BT Grenfell, Susceptible supply limits the role of climate in the early SARS-CoV-2 pandemic. *Science* **369**, 315–319 (2020).
- [28] NG Davies, et al., Estimated transmissibility and impact of SARS-CoV-2 lineage B.1.1.7 in England. *Science* **372**, eabg3055 (2021).

- [29] M Merad, CA Blish, F Sallusto, A Iwasaki, The immunology and immunopathology of covid-19. *Science* **375**, 1122–1127 (2022).
- [30] MJ Mina, et al., A Global Immunological Observatory to meet a time of pandemics. *eLife* **9**, e58989 (2020).
- [31] CJE Metcalf, et al., Use of serological surveys to generate key insights into the changing global landscape of infectious disease. *The Lancet* **388**, 728–730 (2016).
- [32] CJE Metcalf, MJ Mina, AK Winter, BT Grenfell, Opportunities and challenges of a World Serum Bank - Authors' reply. *The Lancet* **389**, 252 (2017).
- [33] J Tang, et al., Respiratory mucosal immunity against sars-cov-2 following mrna vaccination. *Science Immunology*, DOI: 10.1126/sciimmunol.add4853 (2022).
- [34] EJ Topol, A Iwasaki, Operation Nasal Vaccine–Lightning speed to counter COVID-19. *Science Immunology* **7**, eadd9947 (2022).