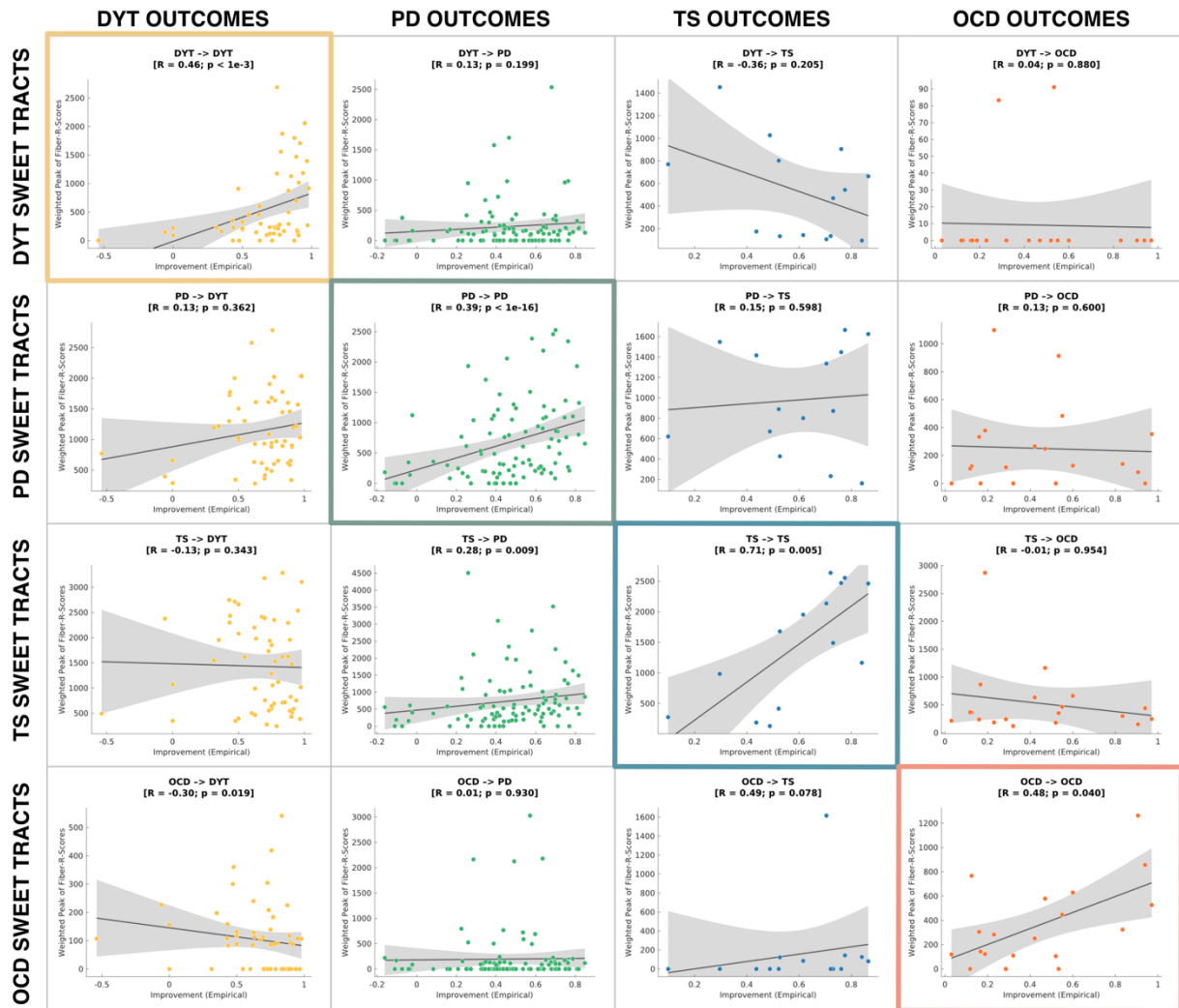
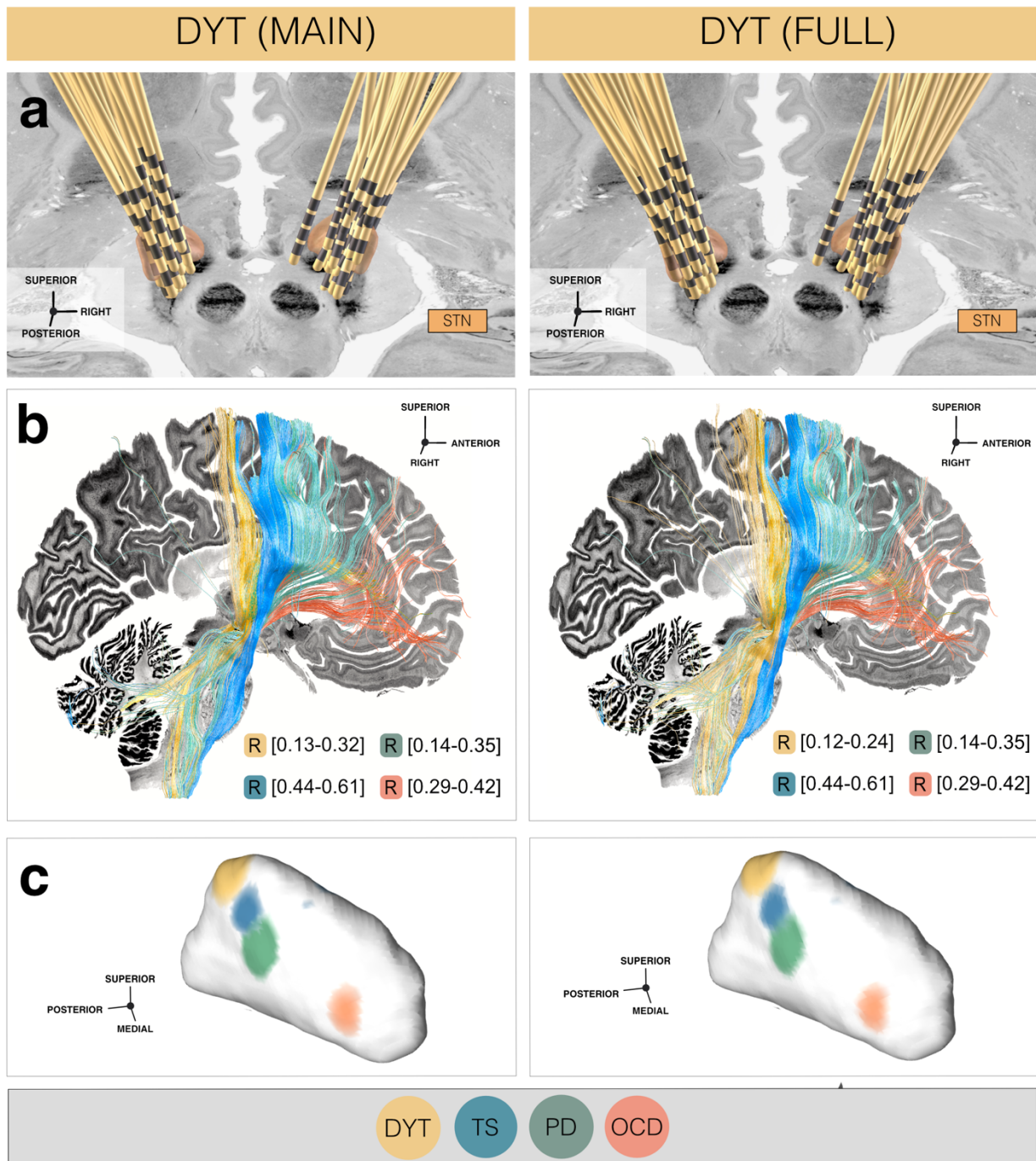


# Segregating the Frontal Cortex with Deep Brain Stimulation (Hollunder et al.): Supplementary Materials

## Supplementary Figures



**Fig. S1: Model specificity of disease-wise sweet fiber bundles.** Based on the degree of overlap of electrical fields with sweet tract profiles of all remaining three disorders, clinical improvement in each disease-wise cohort is cross-predicted. This is done to confirm model specificity in explaining outcome variance within the respective functional domain. P-values of these Spearman's correlations are based on permutation tests of 5,000 randomizations. Grey shaded areas represent 95% confidence intervals. *Abbreviations:* DYT, dystonia; TS, Tourette's syndrome; OCD, obsessive-compulsive disorder; PD, Parkinson's disease.



**Fig. S2: Comparable results based on restricted vs. unrestricted dystonia samples.** Respectively left panels show the anatomical electrode placement in the restricted (*main*) dystonia (DYT) sample relative to the subthalamic nucleus (STN) (A), as well as disease-wise deep brain stimulation (DBS) Fiber Filtering (B) and DBS Sweet Spot Mapping results (C). Specifically, results based on data of DYT patients reported within the main body of the manuscript followed a more conservative scheme of exclusion criteria. In this case, only patients with baseline scores in the Burke-Fahn-Marsden Dystonia Rating Scale (BFMDRS)  $\geq 5$  and follow-up  $\geq 6$  months were considered (N = 56) to ensure comparable and sufficiently stabilized stimulation effects across cohorts. The respectively right panels show electrode placement and results comprising the unrestricted (*full*) DYT sample (N = 70) using the N = 14 additional patients from Shanghai. STN defined by the DBS Intrinsic Template (DISTAL) atlas <sup>1</sup>, with an axial plane of the BigBrain template in 100  $\mu\text{m}$  resolution <sup>2</sup> displayed as a backdrop. *Abbreviations:* TS, Tourette's syndrome; OCD, obsessive-compulsive disorder; PD, Parkinson's disease.

## Supplementary Methods

### Creation of the DBS Tractography Atlas, v2

To validate our functional fiber segregation results and scrutinize the influence of specific characteristics of different connectomic resources, we repeated our analysis based on four normative connectomes. One of these consisted of a custom-curated pathway atlas including a comprehensive description of subthalamic input from multiple cortical and subcortical nodes based on a finite set of 6,525,876 fiber tracts. It was created specifically to represent fiber tracts that had previously lacked delineation in other resources and was informed by both fiber tracking and other (previously established) pathway atlases.

To generate this atlas resource, a first subset of fibers connecting the subthalamic nucleus (STN) to different cortical regions was derived via fiber tracking based on the HCP-1,065 diffusion data, which scanned 1,065 young and healthy adults<sup>3</sup>. This data is openly available within DSI-Studio (<https://sites.google.com/a/labsolver.org/brain/diffusion-mri-data/hcp-dmri-data>). Using DSI-Studio (<https://dsi-studio.labsolver.org/>), the STN (as defined within the Deep brain stimulation [DBS] Intrinsic Template [DISTAL] atlas<sup>1</sup>) was specified as an end region, and 1,500 fibers were tracked from each of nine cortical Brodmann areas (BAs) as regions of interest from the digitized Brodmann atlas<sup>4</sup>. These comprised BA1/2/3 (primary and secondary somatosensory cortex), BA4 (primary motor cortex), BA6 (supplementary motor area), BA10 (fronto-parietal cortex), BA13 (insular cortex), BA24/32 (cingulate cortex), BA25 (subgenual anterior cingulate cortex), as well as BA45/47 (frontal gyrus). Two further ROIs of the subcortical region – the substantia nigra pars compacta and pars reticulata – were added from the California Institute of Technology reinforcement learning atlas (CIT168)<sup>5</sup>.

To enable cortical branching, the angular threshold was set to a range of 60°-90°. Sampling was thresholded at a minimum length of 5 mm to avoid the inclusion of short fibers and to prioritize long-range cortico-subthalamic projections. Fiber tracking between STN and substantia nigra aspects was performed based on a minimal tracking length of 10 mm, considering the distance between these two regions. To account for the exploratory nature of these connections, 20 iterations of topology-informed pruning were further implemented to limit the possibility of including false-positive tracts<sup>6</sup>. Because of the role of these cortical regions in neuromodulation for affective disorders<sup>7</sup>, fiber tracking between BA24/25/32 was seeded from the limbic aspect of the STN (based on its definition within the DISTAL atlas<sup>1</sup>). In this case, a two-fold dilation of the limbic STN was implemented in order to allow for limbic regions adjacent to the anterior STN to be included<sup>8</sup>, and fiber tracts were mirrored between hemispheres (thus increasing the fiber count per sampling to a total of 3,000) to limit the occurrence of potential spurious lateralization effects.

In addition, the creation of this anatomically inclusive pathway atlas was complemented by representations of the anterior thalamic radiation, the cerebellothalamic tract, the dentato-

rubro-thalamic tract, as well as the fasciculus subthalamicus from the deep DBS Tractography Atlas, v1<sup>9</sup>. Finally, definitions of the ansa and fasciculus lenticularis as well as subthalamic-pallidal connections between STN and all pallidal nuclei were added from the Basal Ganglia Pathway Atlas<sup>10</sup>, comprising tracts connecting STN and internal pallidum (GPi), STN and external pallidum (GPe), Gpi and STN (associative and somatomotor aspects), as well as Gpe and STN (associative and somatomotor aspects).

## References

1. Ewert, S. *et al.* Toward defining deep brain stimulation targets in MNI space: A subcortical atlas based on multimodal MRI, histology and structural connectivity. *Neuroimage* **170**, 271–282 (2018).
2. Amunts, K. *et al.* BigBrain: An ultrahigh-resolution 3D human brain model. *Science* (80-). **340**, 1472–1475 (2013).
3. Yeh, F.-C. *et al.* Quantifying differences and similarities in whole-brain white matter architecture using local connectome fingerprints. *PLoS Comput. Biol.* **12**, e1005203 (2016).
4. Pijnenburg, R. *et al.* Myelo- and cytoarchitectonic microstructural and functional human cortical atlases reconstructed in common MRI space. *Neuroimage* **239**, 118274 (2021).
5. Pauli, W. M., Nili, A. N. & Tyszka, J. M. A high-resolution probabilistic in vivo atlas of human subcortical brain nuclei. *Sci. Data* **5**, 180063 (2018).
6. Yeh, F. C. *et al.* Automatic removal of false connections in diffusion MRI tractography using topology-informed pruning (TIP). *Neurotherapeutics* **16**, 52–58 (2019).
7. Riva-Posse, P. *et al.* A connectomic approach for subcallosal cingulate deep brain stimulation surgery: Prospective targeting in treatment-resistant depression. *Mol. Psychiatry* **23**, 843–849 (2018).
8. Haynes, W. I. A. & Haber, S. N. The organization of prefrontal-subthalamic inputs in primates provides an anatomical substrate for both functional specificity and integration: Implications for basal ganglia models and deep brain stimulation. *J. Neurosci.* **33**, 4804–4814 (2013).
9. Middlebrooks, E. H. *et al.* Neuroimaging advances in deep brain stimulation: Review of indications, anatomy, and brain connectomics. *Am. J. Neuroradiol.* **41**, 1558–1568 (2020).
10. Petersen, M. V *et al.* Holographic reconstruction of axonal pathways in the human brain. *Neuron* **104**, 1056-1064.e3 (2019).