

## **Comparison of stability of Glycoprotein Acetyls and high sensitivity C-reactive protein as markers of chronic inflammation.**

Short title: Comparison of stability inflammatory biomarkers

Daisy C.P. Crick <sup>1, 2\*</sup>, Sarah L Halligan <sup>3,4, 5</sup>, David Burgner <sup>6,7</sup>, Toby Mansell <sup>6,7</sup>, Golam M

Khandaker <sup>† 1,2,8,9,10</sup> & Abigail Fraser <sup>† 1,2</sup>

<sup>†</sup> Both authors contributed equally to this work

1. Population Health Sciences, Bristol Medical School, University of Bristol, Bristol, UK
2. MRC Integrative Epidemiology Unit at the University of Bristol, Bristol, UK
3. Department of Psychology, University of Bath, Bath, UK
4. Department of Psychiatry and Mental Health, University of Cape Town, South Africa
5. Department of Psychiatry, Stellenbosch University, South Africa
6. Murdoch Children's Research Institute, Royal Children's Hospital, Parkville, Victoria, Australia
7. Department of Paediatrics, Melbourne University, Parkville, Victoria, Australia
8. NIHR Bristol Biomedical Research Centre, Bristol, UK
9. Avon and Wiltshire Mental Health Partnership NHS Trust, Bristol, UK
10. Centre for Academic Mental Health, University of Bristol, Bristol, UK

\* Author for correspondence: Daisy Crick, University of Bristol, Oakfield House, Oakfield Grove, Bristol BS8 2BN. Email: [dc15053@bristol.ac.uk](mailto:dc15053@bristol.ac.uk)

**Word Count: Abstract: 140/160, Main Body: 3963/15000**

## Abstract

It has been suggested that glycoprotein acetyls (GlycA) better reflects chronic inflammation than high sensitivity C-reactive protein (hsCRP). Despite, this pediatric/life course data are sparse. Using data from the Avon Longitudinal Study of Parents and Children and UK Biobank, we compared short- (over weeks) and long-term (over years) correlations of GlycA and hsCRP, cross-sectional correlations between GlycA and hsCRP, and associations of pro-inflammatory risk factors with GlycA and hsCRP. Across all ages, GlycA showed high short-term (weeks) stability ( $r=0.61-0.73$ ), and moderate long-term (years) stability ( $r=0.34-0.74$ ). Long-term stability was higher for GlycA compared to hsCRP ( $r=0.26-0.65$ ). GlycA and concurrently measured hsCRP were moderately correlated ( $r=0.50-0.61$ ). We found similar associations of known proinflammatory factors, including BMI, smoking, and inflammatory diseases with GlycA and hsCRP. This study showed that GlycA has greater long-term stability compared to hsCRP, however associations of proinflammatory factors with GlycA and hsCRP were broadly similar.

## Teaser (125 characters)

GlycA has greater long-term stability compared to hsCRP although their association with proinflammatory factors are similar.

Acute inflammation is triggered by microbial infection and other factors such as noxious stimuli and tissue injury. It is characterised by the rapid increase of inflammatory markers (e.g., acute phase proteins and cytokines) locally and systemically, and by the accumulation of immune cells in affected tissue (1) (2). In some cases, a dysregulation of the immune system prevents the resolution of the acute inflammatory response and this can lead to a state of systemic, low-grade chronic inflammation (3-5). Certain factors, which can be biological, social or behavioural can also lead to chronic inflammation (3-5). It increases with age (6) and differs between the sexes, for example susceptibility of inflammatory diseases varies between males and females (7-9). Additionally, chronic inflammation is associated with lower economic position (10), smoking frequency [10], obesity (11-13) and alcohol consumption (14).

Chronic inflammation is usually assessed using circulating biomarkers such as cytokines and acute-phase proteins and it is associated with the prevalence, incidence and progression of non-communicable diseases (15) such as cardiovascular disease (CVD) (16, 17), cancer (18-20), type-two diabetes (T2D) (21), depression (22, 23), schizophrenia (24), Alzheimer's disease (25), and bipolar disorder (26, 27). A systematic review and meta-analysis of 29 prospective population-based studies found that a one standard deviation increase in the inflammatory cytokines interleukin-6 (IL-6), interleukin-18 (IL-18) and tumour necrosis factor alpha (TNF- $\alpha$ ) were each associated with a 10-25% increase in the risk of non-fatal and fatal myocardial infarction (28). Similarly, a meta-analysis of 107 case-control studies (n = 5166 with depression, n = 5083 controls) found that levels of seven inflammatory biomarkers, including high-sensitivity C-Reactive Protein (hsCRP) and IL-6, were higher in

people with depression in analyses adjusting for potential confounders (e.g., smoking frequency) (29).

A key challenge for inflammation research is identifying biomarkers that reliably reflect systemic, chronic, and low-grade inflammation. Currently, one of the most widely used biomarker is hsCRP, which is an acute phase protein (30). Other commonly used biomarkers include pro-inflammatory cytokines, such as IL-6 and TNF- $\alpha$  (31). However, short-term variability in circulating levels and rapid kinetics in response to infection or other acute stimuli undermine the utility of these single-protein biomarkers as measures of chronic inflammation (32-34). Composite biomarkers derived from multiple proteins may be more suitable than single-protein biomarkers when measuring chronic inflammation because, unlike single-protein markers, if one component changes, the others may be unaffected, meaning the signal is less subject to acute fluctuations (33).

Glycoprotein acetyls (GlycA) is a composite biomarker of inflammation (35, 36). It is quantified using Nuclear Magnetic Resonance (NMR) (37) and reflects the extent and complexity of N-glycosylation of a number acute phase proteins (predominantly alpha-1-acid glycoprotein, haptoglobin, and alpha-1-antitrypsin) (38). Given that GlycA, unlike hsCRP, is a composite marker of inflammation, it should be less reactive to changes in the environment and as such it has been proposed to be a more stable measure of chronic inflammation compared to acute phase markers such as hsCRP or IL-6 (39).

GlycA has been shown to be positively associated with inflammatory non-communicable diseases (40-42) such as incident CVD events (43), as well as hospitalisation and death from infection (44). Despite this, studies investigating GlycA's short-term stability are lacking, as

are comparisons of GlycA's associations with different pro-inflammatory factors across the life course.

Here we use data from two large UK population-based cohorts: the Avon Longitudinal Study of Parents and Children (ALSPAC) and the UK Biobank (UKBB) to investigate: 1) short-term (weeks) and long-term (years) stability of GlycA levels; 2) correlations between concurrently measured GlycA and hsCRP in adolescence, early-adulthood and mid-adulthood; 3) associations of inflammation-related factors (e.g., smoking, alcohol use, body mass index (BMI) and sex) with GlycA and hsCRP and 4) associations of autoimmune/inflammatory diseases (e.g., Crohn's Disease, systemic lupus erythematosus, SLE, and multiple sclerosis, MS) with GlycA and hsCRP. We hypothesised that GlycA would show greater stability over time than hsCRP and display similar or stronger associations with inflammation-related factors (particularly chronic inflammatory states) compared to hsCRP, given that GlycA should reflect chronic inflammation, whereas hsCRP responds to acute inflammatory triggers.

## **Results**

Median GlycA and hsCRP levels and their range at different ages are presented in Table 1 for ALSPAC offspring and mothers. Characteristics of the main cohorts and the QC subsets of offspring are presented in Supplementary Table 1. Results are presented post logging.

<b>Offspring</b>	<b>15 y</b>			<b>18y</b>			<b>24y</b>		
	N	Median (IQR)	Range	N	Median (IQR)	Range	N	Median (IQR)	Range
GlycA (mmol/L)	3294	1.19 (1.12-1.28)	0.87-1.90	3108	1.20 (1.12-1.29)	0.90-1.93	3129	1.21 (1.11-1.33)	0.84-2.25
CRP (mmol/l)	3374	0.01 (0.005-0.19)	0.002-1.58	3189	0.01 (0.006-0.03)	0.0004-3.82	2958	0.02 (0.01-0.05)	0.002-4.89
<b>Mothers</b>	<b>48y</b>			<b>50y</b>			<b>Combined group (47.57y)</b>		
	N	Median (IQR)		N	Median (IQR)		N	Median (IQR)	
GlycA (mmol/L) (SD)	4243	1.22 (1.13-1.33)	0.86-2.21	2709	1.23 (1.13-1.34)	0.87-2.24	4453	1.22 (1.13-1.33)	0.85-2.21
CRP (mmol/l) (SD)	4446	0.02 (0.01-0.05)	0.001-1.32	2584	0.02 (0.01-0.05)	0.004-1.66	4615	0.22 (0.1-0.5)	0.001-1.32

**Table 1: Means and standard deviations (SD) of GlycA and CRP at different timepoints in the ALSPAC offspring and mothers**

### ***Correlations for GlycA and hsCRP***

Short-term correlations of GlycA are presented in Figure 1, Panel A. There were moderate-to-strong correlations ( $r=0.63-0.83$ ) between measures of GlycA taken 5-6 weeks apart at ages 15y, 18y, 24y, and 48y. hsCRP had a strong short-term correlation ( $r=0.83$ ) at the one-time point for which QC data was available (age 24y). Figure 1, Panel B shows the long-term correlations for GlycA and hsCRP (separately). GlycA had moderate correlations between measures taken years apart in late-adolescence/early-adulthood ( $r=0.36-0.47$ ) and these were larger than equivalent correlations of hsCRP ( $r=0.26-0.33$ ). Mothers' GlycA levels at ages 47y and 50y were strongly correlated ( $r=0.74$ ), and again this correlation was stronger than for hsCRP ( $r=0.65$ ). Concurrently measured GlycA and hsCRP levels were moderately correlated at all ages: 15y, 18y, 24y, 47y, and 50y years ( $r=0.50-0.61$ ), and are presented in Figure 1, Panel C. In UKBB, the cross-sectional correlation between GlycA and hsCRP ( $r=0.52$ ) was similar.

### ***Associations with potential determinants of inflammation***

*ALSPAC offspring:* Estimates from both univariable and multivariable models are presented in Table 2 for GlycA and Table 3 for hsCRP. Multiple inflammation-related factors at ages 15y, 18y and 24y were associated with both GlycA and hsCRP in a similar pattern. For example, in the unadjusted associations (model 1), higher BMI and lower socioeconomic position (SEP) (mother not having a degree) were positively associated with hsCRP and GlycA at all three time points. Having a recent infection within the three weeks preceding the clinic was positively associated with hsCRP and GlycA at 15y and 18y (the two time points at which recent infection was recorded), and smoking status was positively

associated with hsCRP and GlycA at ages 18y and 24y (the two time points it was recorded).

The only factor where the two biomarkers diverged was sex. GlycA was higher in females than males at ages 15y and 18y but this difference attenuated to the null by 24y.

Conversely, mean hsCRP did not differ between sexes at 15y but was higher in females than males at both 18y and 24y.

In models adjusted for age and sex (model 2), results were similar to those described for model 1.

In a model including all available potential determinants (model 3 and Figure 2), BMI and having a recent infection were positively associated with both GlycA and hsCRP at the time points they were recorded. The same pattern of association for sex appeared as in model 1. SEP, household social class, smoking frequency and drinking frequency were not associated with GlycA/hsCRP at any time point.



Variable	Model 1			Model 2 *			Model 3**		
	Beta (se)	95% CI	<i>p</i>	Beta (se)	95% CI	<i>p</i>	Beta (se)	95% CI	<i>p</i>
<b>15y</b>									
BMI at 15y (kg/m <sup>2</sup> )	0.10 (0.005)	0.09, 0.11	<0.001	0.09 (0.01)	0.08, 0.10	<0.001	0.08 (0.01)	0.07, 0.10	<0.001
Age at 15y (months)	0.02 (0.004)	0.02, 0.03	<0.001	0.02 (0.01)	0.01, 0.03	<0.001	0.01 (0.01)	-0.003, 0.03	0.108
Sex (female)	0.47 (0.04)	0.40, 0.55	<0.001	0.47 (0.04)	0.40, 0.54	<0.001	0.32 (0.05)	0.23, 0.41	<0.001
Mother highest educational attainment (Below degree level)	0.16 (0.05)	0.07, 0.25	0.001	0.14 (0.05)	0.05, 0.23	0.002	0.07 (0.05)	-0.04, 0.17	0.225
Household Social Class (Manual)	0.20 (0.05)	0.10, 0.31	<0.001	0.17 (0.06)	0.06, 0.28	0.003	0.08 (0.08)	-0.07, 0.23	0.286
Infection present	0.49 (0.04)	0.41, 0.57	<0.001	0.45 (0.04)	0.37, 0.54	<0.001	0.52 (0.05)	0.42, 0.63	<0.001
Atopy diagnosis	0.16 (0.04)	0.09, 0.23	<0.001	0.14 (0.04)	0.06, 0.21	<0.001	0.09 (0.04)	0.02, 0.17	0.012
<b>18y</b>									
BMI at 15y (kg/m <sup>2</sup> )	0.08 (0.004)	0.07, 0.09	<0.001	0.07 (0.005)	0.06, 0.08	<0.001	0.07 (0.01)	0.05, 0.09	<0.001
Age at 15y (months)	0.01 (0.004)	0.01, 0.02	<0.001	0.01 (0.004)	0.001, 0.02	0.028	0.01 (0.01)	-0.003, 0.03	0.111
Sex (female)	0.47 (0.04)	0.40, 0.55	<0.001	0.47 (0.04)	0.40, 0.54	<0.001	0.36 (0.06)	0.23, 0.49	<0.001
Mother highest educational attainment (Below degree level)	0.14 (0.05)	0.05, 0.23	0.003	0.12 (0.05)	0.03, 0.22	0.008	0.04 (0.08)	-0.11, 0.19	0.622
Household Social Class (Manual)	0.15 (0.06)	0.04, 0.26	0.008	0.06 (0.06)	-0.06, 0.18	0.345	0.11 (0.11)	-0.11, 0.33	0.34
Infection present	0.54 (0.05)	0.44, 0.64	<0.001	0.45 (0.06)	0.34, 0.56	<0.001	0.51 (0.09)	0.34, 0.68	<0.001
Smoking status at 18y	0.16 (0.03)	0.11, 0.21	<0.001	0.12 (0.03)	0.07, 0.18	<0.001	0.06 (0.04)	-0.02, 0.15	0.149

Drinking status at 18y	0.02 (0.02)	-0.01, 0.05	0.242	0.06 (0.02)	0.02, 0.09	0.001	0.06 (0.04)	-0.02, 0.13	0.135
Atopy diagnosis	0.04 (0.04)	-0.04, 0.12	0.325	0.03 (0.04)	-0.04, 0.11	0.383	0.03 (0.05)	-0.08, 0.13	0.630
<b>24y</b>									
BMI at 15y (kg/m <sup>2</sup> )	0.08 (0.003)	0.08, 0.09	<0.001	0.09 (0.004)	0.08, 0.09	<0.001	0.09 (0.01)	0.08, 0.10	<0.001
Age at 15y (months)	0.002 (0.002)	-0.002, 0.01	0.273	0.001 (0.002)	-0.003, 0.01	0.588	0.002 (0.003)	-0.004, 0.01	0.496
Sex (female)	0.05 (0.04)	-0.03, 0.13	0.195	0.05 (0.04)	-0.03, 0.13	0.186	0.07 (0.05)	-0.03, 0.17	0.186
Mother highest educational attainment (Below degree level)	0.16 (0.05)	0.07, 0.25	<0.001	0.14 (0.05)	0.05, 0.24	0.003	-0.05 (0.06)	-0.16, 0.07	0.416
Household Social Class (Manual)	0.35 (0.06)	0.23, 0.47	<0.001	0.29 (0.08)	0.14, 0.44	<0.001	0.25 (0.10)	0.04, 0.45	0.017
Atopy diagnosis	0.07 (0.04)	-0.01, 0.15	0.085	0.06 (0.04)	-0.03, 0.14	0.178	0.07 (0.04)	-0.02, 0.15	0.119
Smoking status at 24y	0.12 (0.02)	0.07, 0.17	<0.001	0.11 (0.03)	0.06, 0.17	<0.001	0.05 (0.04)	-0.03, 0.13	0.215
Drinking status at 24y	0.03 (0.02)	-0.02, 0.07	0.236	0.01 (0.02)	-0.04, 0.06	0.689	-0.03 (0.03)	-0.09, 0.03	0.392

**Table 2: Cross-sectional associations between key determinants of inflammation and GlycA at 15y, 18y and 24y**

\* Adjusted for sex and age, estimates for age were adjusted for sex and vice versa.

\*\* Adjusted sex, age, SEP, household social class, atopy, smoking frequency and drinking frequency. The variable was not included as a covariate if used as the exposure.

Variable	Model 1			Model 2			Model 3		
	Beta (se)	95% CI	<i>p</i>	Beta (se)	95% CI	<i>p</i>	Beta (se)	95% CI	<i>p</i>
<b>15y</b>									
BMI at 15y (kg/m <sup>2</sup> )	0.09 (0.005)	0.08, 0.10	<0.001	0.09 (0.01)	0.08, 0.10	<0.001	0.10 (0.01)	0.08, 0.11	<0.001
Age at 15y (months)	0.02 (0.004)	0.01, 0.02	<0.001	0.02 (0.01)	0.01, 0.03	<0.001	0.02 (0.01)	0.002, 0.03	0.026
Sex (female)	-0.02 (0.04)	-0.09, 0.05	0.59	-0.02 (0.04)	-0.09, 0.05	0.535	-0.16 (0.04)	-0.26, -0.07	<0.001
Mother highest educational attainment (Below degree level)	0.16 (0.05)	0.07, 0.25	<0.001	0.17 (0.05)	0.07, 0.26	<0.001	0.03 (0.05)	-0.08, 0.13	0.63
Household Social Class (Manual)	0.14 (0.05)	0.03, 0.24	0.01	0.16 (0.06)	0.04, 0.27	0.007	0.16 (0.07)	0.01, 0.31	0.035
Infection present	0.46 (0.04)	0.37, 0.54	<0.001	0.46 (0.04)	0.37, 0.55	<0.001	-0.02 (0.04)	-0.09, 0.05	<0.001
Atopy diagnosis	0.02 (0.04)	-0.05, 0.09	0.62	0.03 (0.04)	-0.04, 0.11	0.398	0.48 (0.05)	0.37, 0.58	0.617
<b>18y</b>									
BMI at 15y (kg/m <sup>2</sup> )	0.08 (0.004)	0.07, 0.09	<0.001	0.08 (0.005)	0.07, 0.09	<0.001	0.08 (0.01)	0.07, 0.10	<0.001
Age at 15y (months)	0.01 (0.004)	0.002, 0.02	0.01	0.004 (0.004)	-0.004, 0.01	0.311	0.005 (0.01)	-0.01, 0.02	0.473
Sex (female)	0.30 (0.04)	0.22, 0.37	<0.001	0.29 (0.04)	0.22, 0.37	<0.001	0.23 (0.06)	0.22, 0.35	<0.001
Mother highest educational attainment (Below degree level)	0.12 (0.05)	0.03, 0.21	0.009	0.10 (0.05)	0.01, 0.19	0.036	0.01 (0.07)	-0.14, 0.15	0.944
Household Social Class (Manual)	0.03 (0.06)	-0.08, 0.14	0.566	-0.03 (0.06)	-0.15, 0.09	0.64	0.02 (0.11)	-0.20, 0.24	0.863
Infection present	0.55 (0.05)	0.45, 0.65	<0.001	0.50 (0.05)	0.37, 0.59	<0.001	0.04 (0.05)	-0.06, 0.14	<0.001
Smoking status at 18y	0.09 (0.03)	0.04, 0.14	<0.001	0.08 (0.03)	0.02, 0.13	0.006	0.52 (0.08)	0.35, 0.68	0.135

Drinking status at 18y	0.01 (0.02)	-0.02, 0.05	0.383	0.04 (0.02)	0.01, 0.07	0.018	0.07 (0.04)	-0.02, 0.15	0.862
Atopy diagnosis	0.05 (0.04)	-0.03, 0.12	0.223	0.04 (0.04)	-0.03, 0.12	0.367	-0.01 (0.04)	-0.08, 0.07	0.392
<b>24y</b>									
BMI at 15y (kg/m <sup>2</sup> )	0.08 (0.003)	0.07, 0.08	<0.001	0.07 (0.004)	0.07, 0.08	<0.001	0.08 (0.01)	0.06, 0.09	<0.001
Age at 15y (months)	-0.002 (0.002)	-0.01, 0.002	0.38	-0.001 (0.002)	-0.01, 0.003	0.481	0.0003 (0.003)	-0.01, 0.01	0.932
Sex (female)	0.33 (0.04)	0.25, 0.41	<0.001	0.33 (0.04)	0.25, 0.41	<0.001	0.35 (0.06)	0.24, 0.47	<0.001
Mother highest educational attainment (Below degree level)	0.20 (0.05)	0.10, 0.29	<0.001	0.16 (0.05)	0.06, 0.26	0.001	-0.01 (0.07)	-0.14, 0.11	0.826
Household Social Class (Manual)	0.22 (0.06)	0.09, 0.34	0.001	0.14 (0.08)	-0.01, 0.29	0.069	0.17 (0.11)	-0.05, 0.39	0.137
Atopy diagnosis	0.06 (0.04)	-0.03, 0.14	0.175	0.04 (0.04)	-0.04, 0.13	0.341	-0.01 (0.05)	-0.10, 0.09	0.882

**Table 3: Cross-sectional associations between key determinants of inflammation and CRP at 15y, 18y and 24y**

\* Adjusted for sex and age, estimates for age were adjusted for sex and vice versa.

\*\* Adjusted sex, age, SEP, household social class, atopy, smoking frequency and drinking frequency. The variable was not included as a covariate if used as the exposure.

*ALSPAC mothers*: The inflammation-related factors BMI, SEP and household social class were positively associated with GlycA and hsCRP, with similar effect sizes, in both the unadjusted and adjusted models (Table 4 and Figure 3). The only inflammation-related factor which did not show an association with either GlycA or hsCRP was an atopy diagnosis.

Variable	Model 1			Model 2			Model 3		
	Beta (se)	95% CI	<i>p</i>	Beta (se)	95% CI	<i>p</i>	Beta (se)	95% CI	<i>p</i>
<b>GlycA</b>									
BMI at 15y (kg/m <sup>2</sup> )	0.10 (0.002)	0.09, 0.10	<0.001	0.10 (0.002)	0.09, 0.10	<0.001	0.10 (0.003)	0.09, 0.10	<0.001
Age at 15y (months)	0.004 (0.003)	-0.002, 0.01	0.176	0.004 (0.003)	-0.002, 0.01	0.176	0.02 (0.003)	0.01, 0.03	<0.001
SEP (below degree level)	0.34 (0.04)	0.27, 0.42	<0.001	0.38 (0.04)	0.30, 0.46	<0.001	0.20 (0.04)	0.13, 0.28	<0.001
Grandparents Social Class (manual)	0.23 (0.04)	0.16, 0.30	<0.001	0.24 (0.04)	0.17, 0.31	<0.001	0.12 (0.03)	0.06, 0.19	<0.001
Atopic diagnosis	0.04 (0.02)	-0.01, 0.08	0.133	0.04 (0.02)	-0.01, 0.09	0.115	0.01 (0.02)	-0.03, 0.06	0.598
<b>CRP</b>									
BMI at 15y (kg/m <sup>2</sup> )	0.10 (0.002)	0.10, 0.11	<0.001	0.10 (0.002)	0.10, 0.11	<0.001	0.10 (0.003)	0.10, 0.11	<0.001
Age at 15y (months)	-0.004 (0.003)	-0.01, 0.003	0.278	-0.004 (0.003)	-0.01, 0.003	0.278	0.01 (0.003)	0.001, 0.01	0.013
SEP (below degree level)	0.32 (0.04)	0.24, 0.39	<0.001	0.33 (0.04)	0.25, 0.41	<0.001	0.15 (0.04)	0.08, 0.22	<0.001
Grandparents Social Class (manual)	0.18 (0.04)	0.10, 0.25	<0.001	0.18 (0.04)	0.11, 0.25	<0.001	0.07 (0.03)	0.005, 0.13	0.035
Atopic diagnosis	0.04 (0.02)	-0.01, 0.08	0.155	0.03 (0.02)	-0.01, 0.08	0.166	0.002 (0.02)	-0.04, 0.05	0.933

**Table 4: Cross-sectional associations between key determinants of inflammation and GlycA in the mothers cohort at mean age 47.57y**

\* Adjusted age, estimates for age were left as in Model 1

\*\* Adjusted for age, SEP, grandparents household social class and atopy. The variable was not included as a covariate if used as the exposure.

*UK Biobank*: Estimates from the univariable and multivariable models are presented in Table 5 for both GlycA and hsCRP. Multiple inflammation-related factors were associated with both GlycA and hsCRP in a similar pattern. For example, in the unadjusted model (model 1) and in the model adjusted for age and sex (model 2) arthritis, asthma, MS, chronic sinusitis, diabetes, Crohn's disease, and eczema were each associated with both higher GlycA and hsCRP. In models including all available potential covariates (model 3) arthritis, asthma, MS, chronic sinusitis and Crohn's disease were associated with both higher GlycA and hsCRP; T2D was positively associated with GlycA only; and eczema was associated with hsCRP only. In all three models, neither ELS or Hepatitis C were associated with GlycA or hsCRP. The atopy cluster and the autoimmune cluster were both positively associated with GlycA and hsCRP in all three models. The infection cluster was positively associated with hsCRP in all three models and with GlycA in model 1 and 2. However, in model 3, the confidence interval for GlycA crossed the null value. Results from model 3 are presented in figure 4.

Variable	Model 1 (n=112423)			Model 2* (n=112421)			Model 3 ** (n=91245)		
	Beta (se)	95% CI	p	Beta (se)	95% CI	p	Beta (se)	95% CI	p
<b>CRP</b>									
Arthritis	0.01 (0.0003)	0.009, 0.01	<0.001	0.01 (0.0003)	0.008, 0.010	<0.001	0.01 (0.0004)	0.007, 0.009	<0.001
Asthma	0.02 (0.001)	0.020, 0.023	<0.001	0.02 (0.001)	0.019, 0.023	<0.001	0.01 (0.001)	0.009, 0.013	<0.001
Systemic Lupus Erythematosus	0.0001 (0.0001)	-0.00001, 0.0002	0.0812	0.0001 (0.0001)	-0.00001, 0.0002	0.0812	0.0001 (0.001)	-0.00002, 0.0003	0.097
Multiple Sclerosis	0.001 (0.0002)	0.0005, 0.001	<0.001	0.001 (0.0002)	0.0005, 0.001	<0.001	0.001 (0.0002)	0.0003, 0.001	<0.001
Sinusitis	0.001 (0.0002)	0.001, 0.002	<0.001	0.001 (0.0002)	0.001, 0.002	<0.001	0.001 (0.0003)	0.001, 0.002	<0.001
Diabetes	0.03 (0.001)	0.024, 0.027	<0.001	0.02 (0.001)	0.02, 0.024	<0.001	0.0003 (0.001)	-0.002, 0.002	0.736
Crohn's disease	0.002 (0.0002)	0.002, 0.003	<0.001	0.002 (0.0002)	0.002, 0.003	<0.001	0.003 (0.0003)	0.002, 0.003	<0.001
Eczema	0.001 (0.0002)	0.001, 0.002	<0.001	0.001 (0.0002)	0.001, 0.002	<0.001	0.001 (0.0003)	0.0004, 0.001	<0.001
Hepatitis C.	0.00003 (0.0001)	-0.0001, 0.0002	0.691	0.0001 (0.0001)	-0.0001, 0.0002	0.691	0.00001 (0.0001)	-0.0002, 0.0002	0.926
Clusters									
Atopy	0.02 (0.001)	0.022, 0.025	< 0.001	0.02 (0.001)	0.021, 0.024	< 0.001	0.01	0.005, 0.009	<0.001
Infection	0.001 (0.0003)	0.001, 0.002	< 0.001	0.001 (0.0003)	0.001, 0.002	<0.001	0.001	-0.00001, 0.001	0.0003
Autoimmune	0.04 (0.001)	0.039, 0.042	< 0.001	0.04 (0.001)	0.036, 0.040	<0.001	0.01	0.011, 0.016	<0.001



<b>GlycA</b>									
Arthritis	0.01 (0.0003)	0.006, 0.007	<0.001	0.01 (0.0003)	0.005, 0.007	<0.001	0.004 (0.0004)	0.004, 0.005	<0.001
Asthma	0.02 (0.001)	0.016, 0.019	<0.001	0.02 (0.001)	0.01, 0.02	<0.001	0.01 (0.001)	0.005, 0.008	<0.001
Systemic Lupus Erythematosus	0.0001 (0.0001)	-0.0001, 0.0002	0.334	0.0001 (0.0001)	-0.0001, 0.0002	0.323	0.00003 (0.0001)	-0.0001, 0.0002	0.663
Multiple Sclerosis	0.001 (0.0002)	0.0003, 0.001	0.0001	0.001 (0.0002)	0.0004, 0.001	<0.001	0.001 (0.0002)	0.0002, 0.001	0.002
Sinusitis	0.001 (0.0002)	0.0005, 0.001	0.0001	0.001 (0.001)	0.0004, 0.001	<0.001	0.001 (0.0003)	0.0001, 0.0013	0.013
Diabetes	0.03 (0.001)	0.027, 0.03	<0.001	0.03 (0.001)	0.02, 0.03	<0.001	0.01 (0.001)	0.005, 0.008	<0.001
Chronic's disease	0.002 (0.0002)	0.002, 0.003	<0.001	0.002 (0.0002)	0.002, 0.003	<0.001	0.003 (0.0002)	0.002, 0.003	<0.001
Eczema	0.001 (0.0002)	0.0003, 0.001	0.0004	0.001 (0.0002)	0.0003, 0.001	0.001	0.0002 (0.0003)	-0.0003, 0.001	0.377
Hepatitis C.	0.00001 (0.0001)	-0.0002, 0.0002	0.881	0.00004 (0.0001)	-0.0001, 0.0002	0.625	-0.0001 (0.0001)	-0.0003, 0.0001	0.174
Clusters									
Atopy	0.02 (0.001)	0.016, 0.020	< 0.001	0.017 (0.001)	0.016, 0.019	<0.001	0.01 (0.001)	0.005, 0.009	<0.001
Infection	0.001 (0.0003)	0.0005, 0.001	< 0.001	0.001 (0.0003)	0.0005, 0.001	<0.001	0.001 (0.0003)	-0.00001, 0.001	0.054
Autoimmune	0.04 (0.001)	0.038, 0.042	< 0.001	0.037 (0.001)	0.035, 0.039	<0.001	0.01 (0.001)	0.01, 0.02	<0.001

**Table 5: Cross-sectional associations between inflammation-related diseases and GlycA and hsCRP in UKBB**

\* Adjusted for age and sex

\*\* Adjusted for age, sex, SEP, BMI, ethnicity, smoking status, and drinking status.

## Discussion

We compared the autocorrelations of GlycA and hsCRP over the short and long-term and their association with inflammatory-related factors in two large UK population-based cohorts. The single short-term correlation of hsCRP were similar in magnitude to the short-term GlycA correlations and GlycA and hsCRP were moderately correlated with each other throughout the life course. In contrast, long-term intra-biomarker correlations for GlycA were slightly stronger than those for hsCRP and similar in magnitude to the autocorrelation estimated by a study by Ritchie et al. which used 3 repeated measures taken over the course of a decade ( $r=0.43$ ) (44). Our results are in line with previous literature which suggests that GlycA has greater stability across the life course compared to hsCRP and this may be because GlycA is a composite biomarker of inflammation, whereas hsCRP is an acute phase reactant (45). Therefore, GlycA may capture the chronic inflammatory response, whereas hsCRP is more likely to reflect the acute response only, potentially reflected by hsCRP's typical positively skewed distribution. Further, the difference in stability between GlycA and hsCRP could also explain previous literature which has found that GlycA remains associated with proinflammatory diseases such as CVD, even after adjusting for hsCRP (41). Interestingly however, by logging hsCRP, variation is reduced (see supplementary Figure 4) and our results found comparable associations of pro-inflammatory risk factors including arthritis and BMI with both hsCRP and GlycA.

There were some differences between the associations when using ALSPAC compared to UKBB. We found an association between the atopy cluster and hsCRP and GlycA levels when using the UKBB data, but not with a diagnosis of atopy in ALSPAC offspring or mothers. This may be because UKBB classifies diseases based on hospitalisation and therefore is likely to

report only the more severe phenotypes (e.g., anaphylaxis), whereas ALSPAC includes individuals who have received a diagnosis of an atopic disease, but whom may have only relatively minor symptoms (e.g. mild eczema).

### **Strengths and Limitations**

We used two large population-based cohorts, covering a wide range of ages which allowed us to not only compare the long-term stability of both biomarkers, but also compare the performance of GlycA and hsCRP as inflammatory biomarkers throughout the life-course.

We were able to investigate the short-term stability of GlycA, which has not been previously reported.

However, we also acknowledge some limitations. Short-term repeat hsCRP data were unavailable for most clinics, so it was only possible to assess short-term stability of hsCRP at 24yrs. Some variables such as smoking frequency and alcohol consumption rely on self-report and cannot be validated. Further, given the nature of longitudinal research, not all variables were recorded at all time points in the ALSPAC. Additionally, although chronic disorders were recorded in UKBB, several of the diseases are characterised by acute flares in disease activity, but this was not assessed. There was also an under-representation of ethnic minority populations in both datasets, which perpetuates existing research disparities and limits the generalisability of the current findings.

### **Conclusion**

In conclusion, we found that GlycA and hsCRP correlate moderately across the life-course, with some differences between the sexes at different ages. The short-term GlycA

correlations were comparable to the short-term hsCRP correlation, as were associations of pro-inflammatory factors and diseases with GlycA and hsCRP. Nevertheless, GlycA showed greater long-term stability compared to hsCRP.

## **Materials and Methods**

### **ALSPAC**

The Avon Longitudinal Study of Parents and Children (ALSPAC) birth cohort recruited a total of 14,541 pregnant women residing in the former county of Avon; in South-West England (46-48). Women were recruited if they had an expected delivery date between 1st April 1991 and 31st December 1992. When the oldest offspring were approximately 7 years of age, the initial sample was bolstered with eligible cases who had not joined the study originally. The total sample size for analyses using any data collected after the age of seven was 15,454 pregnancies, resulting in 15,589 fetuses. Of these, 14,901 were alive at 1 year of age. The offspring, their mothers and the mother's partners are regularly followed up. The ALSPAC website contains details of all the data that is available through a fully searchable data dictionary and variable search tool. Informed consent for the use of data collected via questionnaires and clinics was obtained from participants following the recommendations of the ALSPAC Ethics and Law Committee at the time. Ethical approval for the collection of biological samples was obtained from the obtained via the ALSPAC Ethics and Law Committee and Local Research Ethics Committees. Consent for biological samples was obtained in accordance with the Human Tissue Act (2004).

Offspring were included in this study if they had at least one measure of GlycA and one measure of hsCRP across ages 15y, 18y and 24y (n=5356; supplementary Figure 1). Mothers

were included in this study if they had measures of GlycA and hsCRP at mean age 47y or 50y (n=4480; supplementary Figure 2). Only participants of White ethnicity were included as after exclusion criteria, no non-White participants remained.

In addition, a subset of the participants (N=78-124) who had biological measures repeated for quality control (QC) purposes within 5-6 weeks were used to investigate short-term stability. QC measures for GlycA were available at all clinics, but QC measures for hsCRP were only available at the 24y clinic.

### *Inflammatory Biomarkers*

GlycA and hsCRP were measured in blood at mean ages 15y, 18y and 24y in the ALSPAC offspring and at mean ages 47y and 50y in the ALSPAC mothers. Participants fasted overnight (or >6 hours if being seen in the afternoon) before attending the clinic for venepuncture. Blood samples were immediately spun, frozen and stored at -80°C and slowly thawed in a refrigerator (+4°C) prior to analysis processing. The samples were mixed and spun in a centrifuge at 3400 x g to remove precipitation. There were no other freeze-thaw cycles and samples were analysed within 3–9 months of collection.

Plasma GlycA was quantified as part of a high-throughput proton (1H) NMR metabolomic trait platform (35) (Nightingale, UK). Serum hsCRP was measured by automated particle-enhanced immunoturbidimetric assay (Roche UK, Welwyn Garden City, UK). Full details regarding sample processing, NMR analysis, and data processing have been provided elsewhere [38-40]. ALSPAC removed hsCRP values <0.15 mg/L as they were below the detection limit (0.15 mg/L) and two hsCRP measures > 80 mg/L were removed as deemed

anomalies. Measures of GlycA ranged from 0.84 to 2.25 mmol/L and measures of serum hsCRP ranged from 0.1 to 80 mg/L. HsCRP was converted from mg/L to mmol/L so that results were presented in the same units as GlycA.

In the maternal cohort, we created combined variables separately for the GlycA and hsCRP measures. When present, the measure of GlycA or hsCRP from the 47y clinic was prioritised, but if missing, the measure from the 50y clinic was used (4.69% of participants for GlycA, 3.78% for hsCRP). In this way, we were able to increase sample size (GlycA n=4453 and hsCRP n=4615) and statistical power. The corresponding mean age for the combined GlycA variable was 47.57 years (SD: 4.52) and for the combined hsCRP variable was 47.54 years (SD: 4.51).

#### *Potential determinants of inflammation*

Mothers' own and offspring childhood SEP were indexed using maternal self-reported highest education qualification at 8-42 weeks gestation (dichotomised into degree-level qualification vs absence of a degree-level qualification); and household social class, created from the highest social occupation of either parent (dichotomised into manual vs non-manual occupation). Maternal and offspring age (in months) and BMI were recorded at each clinic (BMI indexed as weight in kilogrammes divided by height in meters squared, where weight was measured with the use of Tanita scales to the nearest 0.1 kg and height was measured using a Haroenden stadiometer to the nearest 0.1 cm). Offspring sex was recorded and smoking frequency and drinking frequency were self-reported (each categorised as none, less than once a week, more than once a week), and symptoms of infection (including chest infection, cold or fever) in the three weeks prior to attending the

clinic (yes/no) were recorded at mean ages 18y and 24y. A doctor's diagnosis of asthma or eczema was noted at ages 7y and 15y and used to create an atopy diagnosis variable with individuals classified as "none", "asthma or eczema present" and "both asthma and eczema present". If there was a discrepancy in answers between the two ages, the affirmative answer was used.

### **UK Biobank**

The United Kingdom Biobank (UKBB) is a community-based, prospective study (<https://www.ukbiobank.ac.uk>). Recruitment of ~500,000 participants and baseline assessments were completed between 2006-2010 (5% response rate). Participants were aged 40-70y at baseline, registered with a general practitioner and lived close to 22 assessment centres in England, Scotland, and Wales. Baseline assessments included demographics, lifestyle, and disease history, with linkages to electronic medical records. UK Biobank ethical approval was from the North West Multi-centre Research Ethics Committee. Participants were included in this study if they had a measure of GlycA or hsCRP (n=112423).

### *Inflammatory Biomarkers*

GlycA and hsCRP were measured in blood at baseline (mean age = 48y). Plasma GlycA was quantified using the same method as used for the ALSPAC cohort. Serum hsCRP was measured by automated particle-enhanced immunoturbidimetric assay (Beckman Coulter (UK), Ltd) with detection limits of 0.08 - 80mg/L. Full details regarding hsCRP sample and data processing can be found elsewhere (49) and on the UKBB website (<https://www.ukbiobank.ac.uk/enable-your-research/about-our-data/biomarker-data>). As

in the ALSPAC analysis, hsCRP was converted from mg/L to mmol/L so that results were presented in the same units as GlycA.

### *Potential determinants of inflammation*

We included diagnoses of inflammatory diseases (50) recorded across hospital inpatient records in either the primary or secondary position from 2006 onwards. Each overarching disease contained multiple types of disease which can be found in table 2 of the supplement along with their ICD-10 code and the number of individuals with the disease. Specifically, we used diagnoses for types of arthritis, types of Crohn's Disease, types of SLE, MS, types of chronic sinusitis, the different presentations of T2D, hepatitis C, types of eczema, and types of asthma. Although there are different forms of the diseases (e.g. allergic asthma and non-allergic asthma), for ease these will be referred to by the following names: arthritis, Crohn's disease, SLE, MS, chronic sinusitis, T2D, hepatitis C, eczema and asthma throughout the manuscript.

We further grouped conditions into three clusters: atopy (asthma and eczema), chronic infection (hepatitis C and chronic sinusitis) and autoimmune disease (arthritis, T2D, SLE, MS, and Crohn's disease). We created a count variable based on the number of conditions participants had within each disease cluster. Details of which cluster each disease is part of is presented in Supplementary Table 1.

Self-reported highest education qualification (dichotomised into degree-level qualification vs absence of a degree-level qualification) was used as a proxy for SEP. Participants' sex and age (rounded to whole years) were recorded at baseline where age was a derived variable based on the date of birth and date of attending the initial assessment. BMI was calculated



from height and weight measured during the baseline visit (BMI indexed as in ALSPAC and weight was measured with the use of Tanita scales to the nearest 0.1 kg and height was measured using SECA 240 height measure to the nearest 0.1 cm). Participants' ethnicity was recorded and we dichotomised categories into white and non-white. Smoking status and drinking frequency were self-reported at baseline as current, previous or never.

### **Statistical Analysis**

GlycA was mostly normally distributed but hsCRP values were not normally distributed. Both biomarkers were log-transformed (supplementary Figures 3-4 respectively) to maintain consistency of methods between the two biomarkers. Z-scores were calculated so results were comparable.

We used ALSPAC clinic data at offspring mean ages 15y, 18y and 24y, and maternal mean ages 47y and 50y to investigate: 1) Short-term (weeks) correlations for GlycA and hsCRP using QC data; 2) Long-term (years) correlations for GlycA and hsCRP; and 3) Cross-sectional correlations between these markers at each clinic. We only had QC measures for hsCRP at the 24y clinic so only one short-term correlation for CRP could be estimated. When investigating the mothers' short term correlations using QC data, we used the clinic combined GlycA variable. We were only able to examine cross-sectional correlations between GlycA and hsCRP in UKBB as repeat measures were unavailable.

We examined associations between potential determinants of inflammation, GlycA and hsCRP using univariable and multivariable regression. We investigated three models: a univariable analysis (model 1), models adjusting for only age and sex (model 2; when age/sex were the exposure we adjusted for the other variable only), and models adjusting for all other available determinants (model 3). For analysis using ALSPAC, model 3 included

the variables: sex, age, SEP, household social class, atopy, smoking status and drinking frequency. Ethnicity was not adjusted for as non-White participants had been removed. For UKBB, model 3 included the variables: age, sex, ethnicity, BMI, highest education qualification as a proxy for SEP, smoking status and drinking frequency.

## **Acknowledgements**

This work was carried out using the computational facilities of the Advanced Computing Research Centre, University of Bristol - <http://www.bristol.ac.uk/acrc/>.

We are extremely grateful to all the families who took part in this study, the midwives for their help in recruiting them, and the whole ALSPAC team, which includes interviewers, computer and laboratory technicians, clerical workers, research scientists, volunteers, managers, receptionists and nurses.

## **Funding**

The UK Medical Research Council and Wellcome (Grant ref: 217065/Z/19/Z) and the University of Bristol provide core support for ALSPAC. This publication is the work of the authors and DC will serve as guarantor for the contents of this paper. A comprehensive list of grants funding is available on the ALSPAC website (<http://www.bristol.ac.uk/alspac/external/documents/grant-acknowledgements.pdf>); This research was specifically funded by Wellcome Trust and MRC (core) (Grant ref: 76467/Z/05/Z), MRC (Grant ref: MR/L022206/1) and Wellcome Trust (Grant ref: 8426812/Z/07/Z).

This work was supported in part by the GW4 BIOMED DTP (D.C., MR/N0137941/), awarded to the Universities of Bath, Bristol, Cardiff and Exeter from the Medical Research Council (MRC)/UKRI.

GMK acknowledges funding support from the Wellcome Trust (grant code: 201486/Z/16/Z), the MQ: Transforming Mental Health (grant code: MQDS17/40), the Medical Research Council UK (grant code: MC\_PC\_17213 and MR/S037675/1) and the BMA Foundation (J Moulton grant 2019).

AF, GK work in the MRC Integrative Epidemiology Unit (MC\_UU\_00011)

UK Biobank is generously supported by its founding funders the Wellcome Trust and UK Medical Research Council, as well as the British Heart Foundation, Cancer Research UK, Department of Health, Northwest Regional Development Agency and Scottish Government.

The organisation has over 150 dedicated members of staff, based in multiple locations across the UK.

DB is supported by a National Health and Medical Research (Australia) Investigator Grant (GTN1175744). Research at the Murdoch Children's Research Institute is supported by the Victorian Government's Medical Research Operational Infrastructure research Program.

TM is supported by a fellowship from Murdoch Children's Research Institute.

### **Author Contribution**

Conceptualization: DCPC, AF, SH

Methodology: DCPC, AF, SH, GK

Investigation: DCPC

Supervision: AF, SH, GK

Writing original draft: DCPC

Writing - review and editing: DCPC, AF, SH, GK, DB, TM

### **Competing interest**

The authors declared no relevant potential financial conflicts of interest related to the material presented in the article

### **Data and material availability**

Data needed to evaluate the conclusions presented in this paper are provided in the manuscript and/or the Supplementary Materials. Additional ALSPAC data can be requested from the ALSPAC executive committee and reasonable requests from bona fide researchers will be approved. This research has been conducted using data from UK Biobank project ID: 16391, a major biomedical database and can be provided by UKB (<http://www.ukbiobank.ac.uk/>).

1. Majno G, Joris I. Cells, tissues, and disease: principles of general pathology: Oxford University Press; 2004.
2. Kumar V, Abbas AK, Aster JC. Robbins basic pathology e-book: Elsevier Health Sciences; 2017.
3. Medzhitov RJN. Origin and physiological roles of inflammation. *Nature*. 2008;454(7203):428-35.
4. Furman D, Campisi J, Verdin E, Carrera-Bastos P, Targ S, Franceschi C, et al. Chronic inflammation in the etiology of disease across the life span. *Nat Med*. 2019;25(12):1822-32.
5. Matzinger PJs. The danger model: a renewed sense of self. *Science translational medicine*. 2002;296(5566):301-5.
6. Franceschi C, Campisi J. Chronic Inflammation (Inflammaging) and Its Potential Contribution to Age-Associated Diseases. *The Journals of Gerontology Series A: Biological Sciences and Medical Sciences*. 2014;69(Suppl 1):S4-S9.
7. Casimir GJ, Lefèvre N, Corazza F, Duchateau J. Sex and inflammation in respiratory diseases: a clinical viewpoint. *Biology of Sex Differences*. 2013;4(1):16.
8. Gannon CJ, Pasquale M, Tracy JK, McCarter RJ, Napolitano LM. Male gender is associated with increased risk for postinjury pneumonia. *Shock*. 2004;21(5):410-4.
9. Klein SL, Flanagan KL. Sex differences in immune responses. *Nat Rev Immunol*. 2016;16(10):626-38.
10. Deverts DJ, Cohen S, Kalra P, Matthews KA. The prospective association of socioeconomic status with C-reactive protein levels in the CARDIA study. *Brain, behavior, and immunity*. 2012;26(7):1128-35.
11. De Heredia FP, Gómez-Martínez S, Marcos A. Obesity, inflammation and the immune system. *Proceedings of the Nutrition Society*. 2012;71(2):332-8.
12. Straub RH, Hense HW, Andus T, Scho Lmerich J, Riegger GAJ, Schunkert H. Hormone Replacement Therapy and Interrelation between Serum Interleukin-6 and Body Mass Index in Postmenopausal Women: A Population-Based Study. *The Journal of Clinical Endocrinology & Metabolism*. 2000;85(3):1340-4.
13. Fontana L, Eagon JC, Trujillo ME, Scherer PE, Klein S. Visceral Fat Adipokine Secretion Is Associated With Systemic Inflammation in Obese Humans. *Diabetes*. 2007;56(4):1010-3.
14. Wang HJ. Alcohol, inflammation, and gut-liver-brain interactions in tissue damage and disease development. *World Journal of Gastroenterology*. 2010;16(11):1304.
15. Calder PC, Albers R, Antoine J-M, Blum S, Bourdet-Sicard R, Ferns G, et al. Inflammatory disease processes and interactions with nutrition. *British Journal of Nutrition*. 2009;101(S1):1-45.
16. Calabrò P, Golia E, Yeh ET, editors. CRP and the risk of atherosclerotic events. *Seminars in immunopathology*; 2009: Springer.
17. Calabro P, Golia E, TH Yeh EJCpb. Role of C-reactive protein in acute myocardial infarction and stroke: possible therapeutic approaches. *Current pharmaceutical biotechnology*. 2012;13(1):4-16.
18. Sabaawy HE, Ryan BM, Khiabani H, Pine SR. JAK/STAT of all trades: linking inflammation with cancer development, tumor progression and therapy resistance. *Carcinogenesis*. 2021;42(12):1411-9.
19. Rothwell PM, Fowkes FGR, Belch JF, Ogawa H, Warlow CP, Meade TW. Effect of daily aspirin on long-term risk of death due to cancer: analysis of individual patient data from randomised trials. *The Lancet*. 2011;377(9759):31-41.

20. Rothwell PM, Wilson M, Price JF, Belch JF, Meade TW, Mehta Z. Effect of daily aspirin on risk of cancer metastasis: a study of incident cancers during randomised controlled trials. *The Lancet*. 2012;379(9826):1591-601.
21. Connelly MA, Gruppen EG, Wolak-Dinsmore J, Matyus SP, Riphagen IJ, Shalaurova I, et al. GlycA, a marker of acute phase glycoproteins, and the risk of incident type 2 diabetes mellitus: PREVEND study. *Clin Chim Acta*. 2016;452:10-7.
22. Chu AL, Hickman M, Steel N, Jones PB, Davey Smith G, Khandaker GM. Inflammation and Depression: A Public Health Perspective. *Brain, Behavior, and Immunity*. 2021;95:1-3.
23. Dowlati Y, Herrmann N, Swardfager W, Liu H, Sham L, Reim EK, et al. A meta-analysis of cytokines in major depression. *Biol Psychiatry*. 2010;67(5):446-57.
24. Perry BI, Upthegrove R, Kappelmann N, Jones PB, Burgess S, Khandaker GM. Associations of immunological proteins/traits with schizophrenia, major depression and bipolar disorder: A bi-directional two-sample mendelian randomization study. *Brain Behav Immun*. 2021;97:176-85.
25. Kinney JW, Bemiller SM, Murtishaw AS, Leisgang AM, Salazar AM, Lamb BT. Inflammation as a central mechanism in Alzheimer's disease. *Alzheimer's & Dementia: Translational Research & Clinical Interventions*. 2018;4(1):575-90.
26. Fries GR, Walss-Bass C, Bauer ME, Teixeira AL. Revisiting inflammation in bipolar disorder. *Pharmacology Biochemistry and Behavior*. 2019;177:12-9.
27. Oliveira J, Oliveira □ Maia A, Tamouza R, Brown A, Leboyer M. Infectious and immunogenetic factors in bipolar disorder. *Acta Psychiatrica Scandinavica*. 2017;136(4):409-23.
28. Kaptoge S, Seshasai SRK, Gao P, Freitag DF, Butterworth AS, Borglykke A, et al. Inflammatory cytokines and risk of coronary heart disease: new prospective study and updated meta-analysis. *European heart journal*. 2014;35(9):578-89.
29. Osimo EF, Pillinger T, Rodriguez IM, Khandaker GM, Pariante CM, Howes OD. Inflammatory markers in depression: A meta-analysis of mean differences and variability in 5,166 patients and 5,083 controls. *Brain Behav Immun*. 2020;87:901-9.
30. Bassuk SS, Rifai N, Ridker PM. High-sensitivity C-reactive protein: clinical importance. *Curr Probl Cardiol*. 2004;29(8):439-93.
31. Gulhar R, Ashraf MA, Jialal I. Physiology, Acute Phase Reactants. StatPearls. Treasure Island (FL): StatPearls Publishing Copyright © 2022, StatPearls Publishing LLC.; 2022.
32. Del Giudice M, Gangestad SWJB, behavior., immunity. Rethinking IL-6 and CRP: Why they are more than inflammatory biomarkers, and why it matters. *Brain, Behavior, and Immunity*. 2018;70:61-75.
33. Scott, Würtz P, Artika, Abraham G, Aki, Liam, et al. The Biomarker GlycA Is Associated with Chronic Inflammation and Predicts Long-Term Risk of Severe Infection. *Cell Systems*. 2015;1(4):293-301.
34. Gouin J-P, Glaser R, Malarkey WB, Beversdorf D, Kiecolt-Glaser JJHP. Chronic stress, daily stressors, and circulating inflammatory markers. *Health Psychology*. 2012;31(2):264.
35. Würtz P, Kangas AJ, Soininen P, Lawlor DA, Davey Smith G, Ala-Korpela M. Quantitative Serum Nuclear Magnetic Resonance Metabolomics in Large-Scale Epidemiology: A Primer on -Omic Technologies. *American journal of epidemiology*. 2017;186(9):1084-96.
36. Soininen P, Kangas AJ, Würtz P, Suna T, Ala-Korpela M. Quantitative Serum Nuclear Magnetic Resonance Metabolomics in Cardiovascular Epidemiology and Genetics. *Circulation: Cardiovascular Genetics*. 2015;8(1):192-206.

37. Otvos JD, Shalaurova I, Wolak-Dinsmore J, Connelly MA, Mackey RH, Stein JH, et al. GlycA: A Composite Nuclear Magnetic Resonance Biomarker of Systemic Inflammation. *Clinical Chemistry*. 2015;61(5):714-23.
38. Chiesa ST, Charakida M, Georgiopoulos G, Roberts JD, Stafford SJ, Park C, et al. Glycoprotein Acetyls: A Novel Inflammatory Biomarker of Early Cardiovascular Risk in the Young. *Journal of the American Heart Association*. 2022;11(4).
39. Connelly MA, Otvos JD, Shalaurova I, Playford MP, Mehta NN. GlycA, a novel biomarker of systemic inflammation and cardiovascular disease risk. *J Transl Med*. 2017;15(1):219.
40. Kevat AC, Carzino R, Vidmar S, Ranganathan S. Glycoprotein A as a biomarker of pulmonary infection and inflammation in children with cystic fibrosis. *Pediatric Pulmonology*. 2020;55(2):401-6.
41. McGarrah RW, Kelly JP, Craig DM, Haynes C, Jessee RC, Huffman KM, et al. A novel protein glycan-derived inflammation biomarker independently predicts cardiovascular disease and modifies the association of HDL subclasses with mortality. *Clinical Chemistry*. 2017;63(1):288-96.
42. Dierckx T, Chiche L, Daniel L, Lauwerys B, Van Weyenbergh J, Jourde-Chiche N. Serum GlycA level is elevated in active systemic lupus erythematosus and correlates to disease activity and lupus nephritis severity. *Journal of clinical medicine*. 2020;9(4):970.
43. Akinkuolie AO, Buring JE, Ridker PM, Mora S. A novel protein glycan biomarker and future cardiovascular disease events. *Journal of the American Heart Association*. 2014;3(5):e001221.
44. Ritchie S, Würtz P, Artika, Abraham G, Aki, Liam, et al. The Biomarker GlycA Is Associated with Chronic Inflammation and Predicts Long-Term Risk of Severe Infection. *Cell Systems*. 2015;1(4):293-301.
45. Collier F, Ellul S, Juonala M, Ponsonby A-L, Vuillermin P, Saffery R, et al. Glycoprotein acetyls (GlycA) at 12 months are associated with high-sensitivity C-reactive protein and early life inflammatory immune measures. *Pediatric Research*. 2019;85(5):584-5.
46. Boyd A, Golding J, Macleod J, Lawlor DA, Fraser A, Henderson J, et al. Cohort Profile: the 'children of the 90s'--the index offspring of the Avon Longitudinal Study of Parents and Children. *Int J Epidemiol*. 2013;42(1):111-27.
47. Fraser A, Macdonald-Wallis C, Tilling K, Boyd A, Golding J, Davey Smith G, et al. Cohort Profile: the Avon Longitudinal Study of Parents and Children: ALSPAC mothers cohort. *Int J Epidemiol*. 2013;42(1):97-110.
48. Northstone K, Lewcock M, Groom A, Boyd A, Macleod J, Timpson N, et al. The Avon Longitudinal Study of Parents and Children (ALSPAC): an update on the enrolled sample of index children in 2019. *Wellcome Open Res*. 2019;4:51.
49. Elliott P, Peakman TC. The UK Biobank sample handling and storage protocol for the collection, processing and archiving of human blood and urine. *Int J Epidemiol*. 2008;37(2):234-44.
50. Lewis G, Pelosi AJ, Araya R, Dunn G. Measuring psychiatric disorder in the community: a standardized assessment for use by lay interviewers. *Psychol Med*. 1992;22(2):465-86.

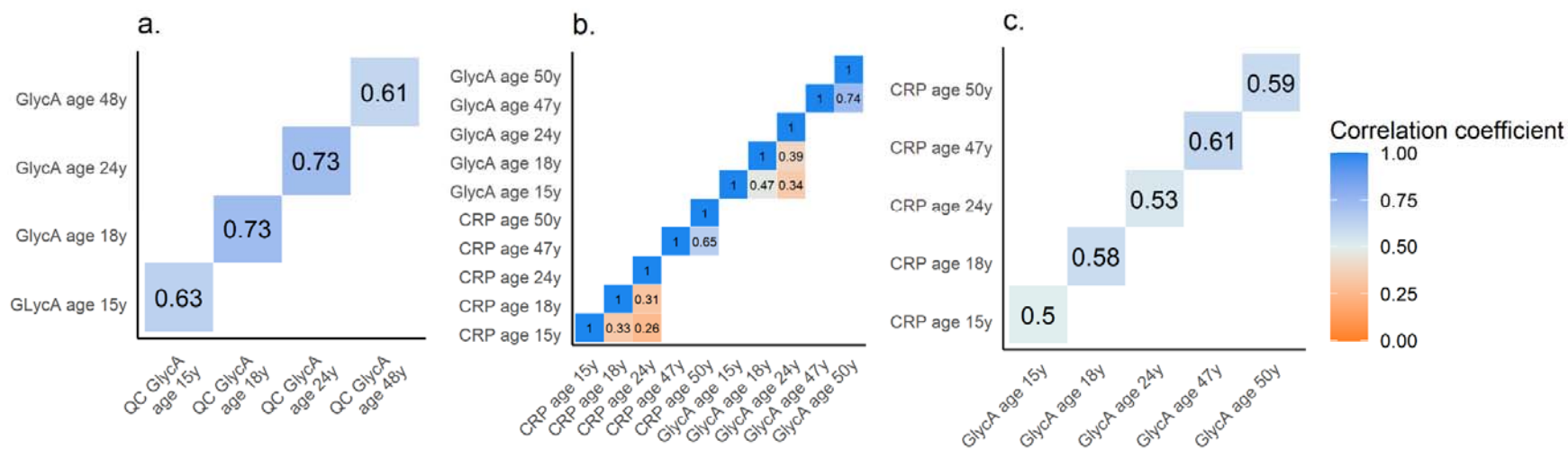


Figure 1: Correlation plots using the ALSPAC cohort (both mothers and offspring)

a. Short-term correlations (5-6 weeks) between logged GlycA at clinic and logged GlycA QC data.

b. Long-term correlations of logged GlycA and logged hsCRP at different timepoints across the life course.

c. Cross-sectional correlations between logged GlycA and logged hsCRP across the life course.

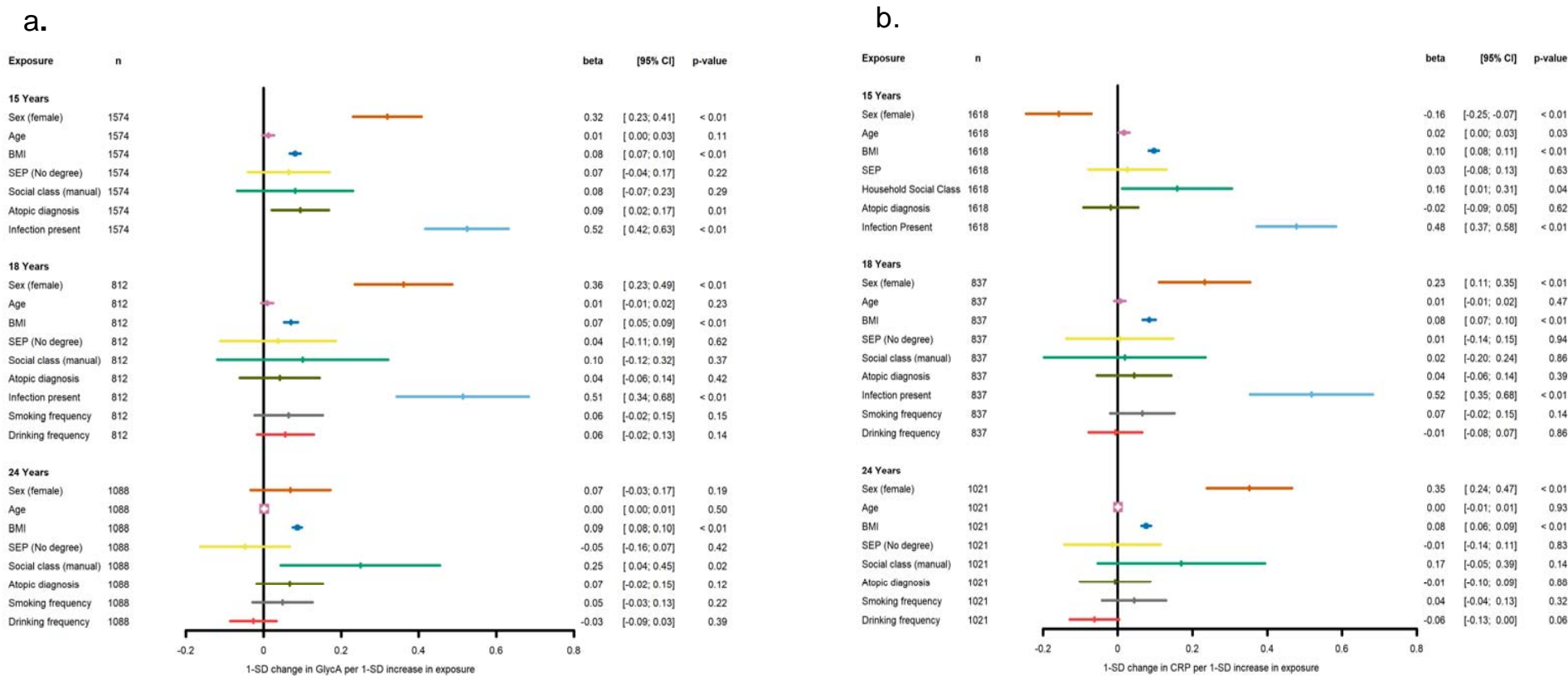


Figure 2: Associations between known determinants of inflammation and the biomarkers hsCRP and GlycA in the ALSPAC offspring at ages 15y, 18y and 24y  
 SEP = Mother holds Degree vs No degree, Household Social Class = Parent's manual vs Non-manual occupation, Atopy = Asthma and eczema, asthma or eczema or neither,  
 Smoking frequency= none, less than once a week, more than once a week, Drinking frequency= none, less than once a week, more than once a week.  
 Both biomarkers are log-transformed



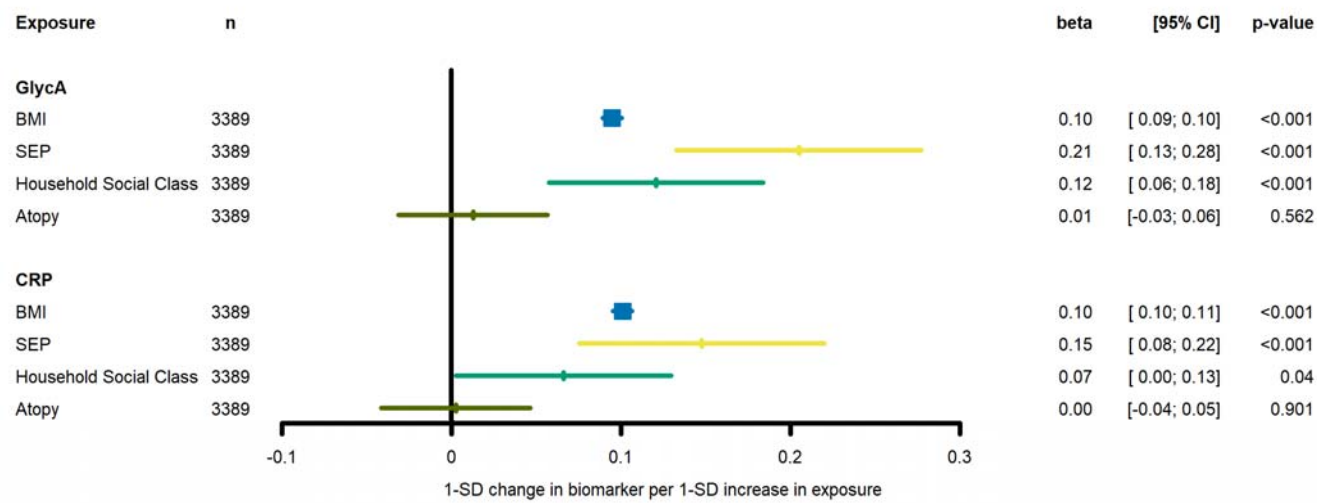


Figure 3: Associations between known determinants of inflammation and the biomarkers CRP and GlycA in the ALSPAC mothers at mean age 48y  
 SEP = Degree vs No degree, Household Social Class = Grandparents' Manual vs Non-manual occupation, Atopy = Asthma and eczema, asthma or eczema or neither.  
 Both biomarkers are log-transformed

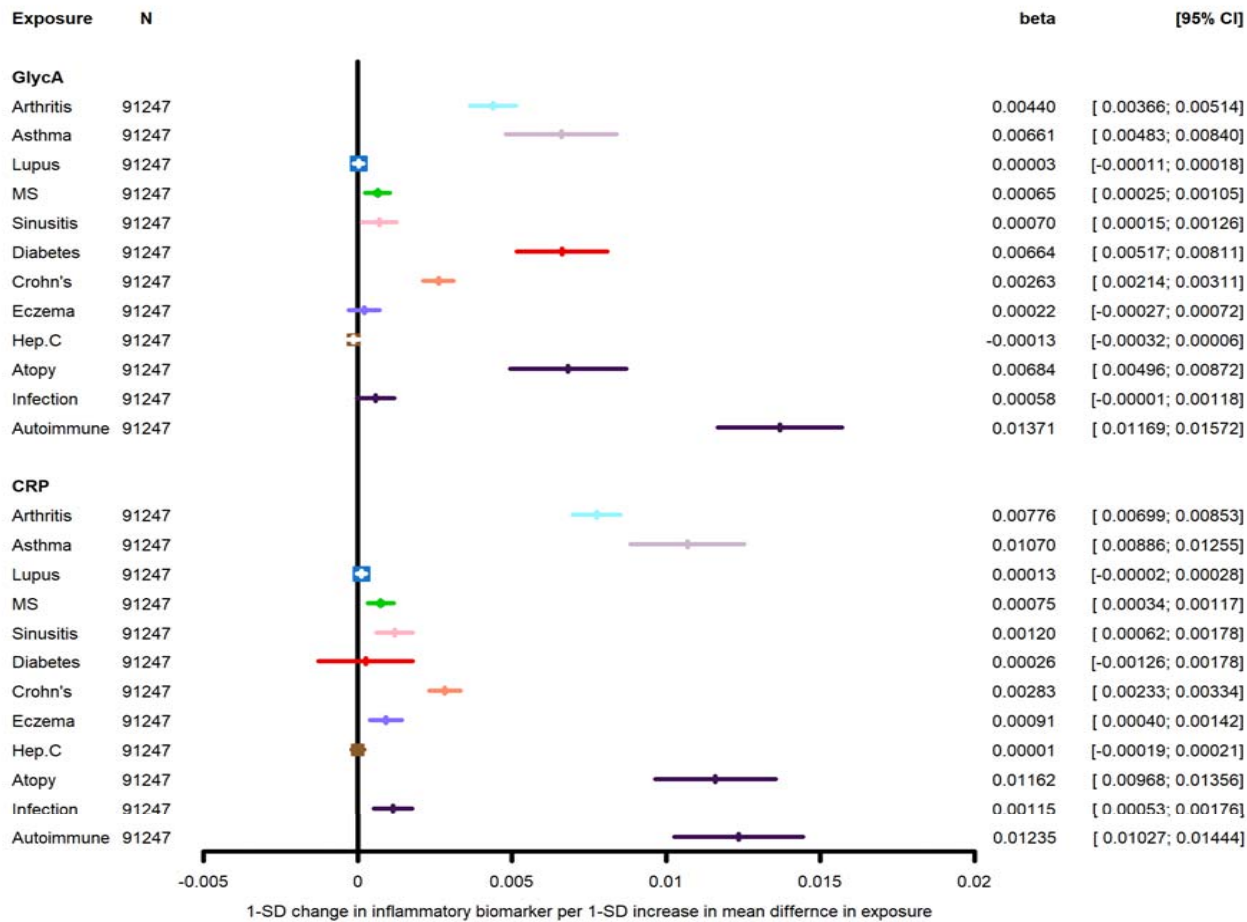


Figure 4: Associations between known inflammatory diseases and the biomarkers CRP and GlycA in the UKBB  
Both biomarkers are log-transformed