

## SUPPLEMENTARY TABLES

**Table S1.** Double detection of incident infection for individual HPV types, grouped types at the woman-level, and grouped types at the HPV-level, by subgenus.

	n <sup>a</sup>	Cumulative Detection of Infection, % (95% CI)			Detection Rate <sup>b</sup> (95% CI)	Time (months) to Detection (95% CI)			
		6 Months	12 Months	24 Months		Actuarial Mean <sup>c</sup>	Actuarial Median <sup>c</sup>	Conditional Mean <sup>d</sup>	Conditional Median <sup>d</sup>
<b>Subgenus 1</b>									
HPV6	435	0.2 (0.0, 1.7)	2.0 (1.0, 3.9)	5.2 (3.4, 8.1)	2.0 (1.3, 3.0)	47.4 (46.5, 48.2)	NR	15.2 (12.2, 18.1)	15.3 (10.6, 18.1)
HPV11 <sup>e</sup>	451	0.0	0.0	0.0	0.0	--	NR	--	--
HPV40	442	0.0 <sup>f</sup>	0.7 (0.2, 2.3)	2.0 (0.9, 4.1)	0.6 (0.3, 1.3)	48.8 (48.3, 49.3)	NR	14.3 (9.7, 18.9)	13.1 (6.7, 22.9)
HPV42	419	1.7 (0.8, 3.5)	4.0 (2.5, 6.5)	5.9 (3.9, 8.9)	2.3 (1.5, 3.4)	47.0 (46.1, 48.0)	NR	10.8 (7.9, 13.7)	9.4 (5.4, 11.7)
HPV44	445	0.2 (0.0, 1.6)	0.5 (0.1, 1.9)	0.7 (0.2, 2.3)	0.3 (0.1, 0.8)	49.1 (48.8, 49.5)	NR	9.0 (3.8, 14.3)	7.6 (4.2, NR) <sup>g</sup>
HPV54	426	0.0 <sup>f</sup>	0.8 (0.3, 2.3)	3.2 (1.8, 5.7)	1.3 (0.8, 2.3)	48.0 (47.2, 48.7)	NR	18.4 (14.8, 22.0)	18.2 (9.4, 19.7)
Any Woman-Level	367	1.7 (0.8, 3.7)	6.4 (4.2, 9.5)	13.4 (10.0, 17.7)	5.9 (4.5, 7.8)	43.3 (41.8, 44.9)	NR	15.0 (12.8, 17.2)	15.3 (9.7, 18.0)
Any HPV-Level <sup>h</sup>	2,618	0.3 (0.2, 0.7)	1.3 (0.9, 1.8)	2.8 (2.2, 3.7)	1.1 (0.8, 1.4)	48.3 (46.3, 48.5)	NR	14.0 (12.1, 15.9)	12.6 (9.7, 17.0)
<b>Subgenus 2</b>									
HPV16	374	1.6 (0.7, 3.6)	2.2 (1.1, 4.4)	3.9 (2.3, 6.7)	1.8 (1.1, 2.9)	47.4 (46.5, 48.4)	NR	15.1 (10.7, 19.6)	12.7 (4.8, 21.8)
HPV18	437	0.0 <sup>f</sup>	0.8 (0.2, 2.3)	1.4 (0.6, 3.3)	0.6 (0.3, 1.2)	48.8 (48.3, 49.3)	NR	15.8 (9.1, 22.5)	11.4 (8.4, NR) <sup>g</sup>
HPV26 <sup>c</sup>	453	0.0	0.0	0.0	0.0	--	NR	--	--
HPV31	430	0.5 (0.1, 1.9)	1.3 (0.5, 3.0)	2.4 (1.3, 4.6)	1.0 (0.6, 1.9)	48.3 (47.7, 49.0)	NR	14.5 (10.1, 19.0)	13.0 (5.1, 19.7)
HPV33 <sup>c</sup>	448	0.0	0.0	0.0	0.0	--	NR	--	--
HPV34 <sup>c</sup>	450	0.0	0.0	0.0	0.0	--	NR	--	--
HPV35	450	0.2 (0.0, 1.6)	0.5 (0.1, 1.9)	0.7 (0.2, 2.2)	0.3 (0.1, 0.8)	49.2 (48.8, 49.5)	NR	8.4 (5.0, 11.8)	8.5 (4.6, NR) <sup>g</sup>
HPV39	421	0.5 (0.1, 1.9)	1.0 (0.4, 2.6)	3.7 (2.1, 6.2)	1.4 (0.8, 2.3)	48.0 (47.3, 48.8)	NR	13.7 (10.5, 16.8)	12.6 (7.1, 17.2)
HPV45	445	0.0 <sup>f</sup>	0.0 <sup>f</sup>	0.8 (0.3, 2.5)	0.3 (0.1, 0.8)	49.2 (48.8, 49.5)	NR	14.7 (12.8, 16.7)	14.6 (12.7, NR) <sup>g</sup>
HPV51	405	0.3 (0.0, 1.8)	1.9 (0.9, 3.9)	3.4 (1.9, 5.9)	1.5 (0.9, 2.5)	47.9 (47.1, 48.6)	NR	14.9 (11.2, 18.5)	12.2 (9.3, 18.6)
HPV52	418	0.7 (0.2, 2.2)	2.0 (1.0, 4.0)	2.6 (1.4, 4.8)	1.1 (0.6, 1.9)	48.3 (47.6, 49.0)	NR	10.7 (7.1, 14.3)	9.5 (4.1, 14.0)
HPV53	419	0.5 (0.1, 1.9)	2.6 (1.4, 4.7)	4.3 (2.7, 7.0)	1.8 (1.1, 2.8)	47.6 (46.7, 48.4)	NR	12.7 (9.6, 15.7)	10.6 (8.5, 13.1)
HPV56	432	0.0 <sup>f</sup>	1.3 (0.5, 3.0)	3.1 (1.7, 5.5)	1.0 (0.6, 1.9)	48.4 (47.7, 49.0)	NR	13.6 (10.7, 16.5)	13.5 (9.4, 16.3)
HPV58	431	0.2 (0.0, 1.7)	1.5 (0.7, 3.3)	2.4 (1.3, 4.6)	1.0 (0.6, 1.9)	48.3 (47.6, 49.0)	NR	14.7 (9.8, 19.7)	11.7 (7.1, 22.8)
HPV59	426	0.5 (0.1, 1.9)	0.5 (0.1, 1.9)	2.2 (1.1, 4.4)	0.9 (0.5, 1.8)	48.3 (47.6, 49.0)	NR	16.9 (11.6, 22.1)	15.6 (4.8, 21.0)
HPV66	426	1.2 (0.5, 2.8)	2.2 (1.2, 4.2)	4.7 (2.9, 7.4)	1.7 (1.1, 2.7)	47.6 (46.8, 48.4)	NR	12.7 (9.2, 16.1)	11.9 (5.5, 16.9)
HPV67	427	0.5 (0.1, 1.9)	1.3 (0.5, 3.0)	3.0 (1.7, 5.3)	1.1 (0.6, 2.0)	48.2 (47.5, 48.9)	NR	13.4 (9.6, 17.3)	13.1 (5.3, 17.5)
HPV68	440	0.0 <sup>f</sup>	0.7 (0.2, 2.2)	1.0 (0.4, 2.7)	0.5 (0.2, 1.1)	48.9 (48.5, 49.4)	NR	13.2 (6.2, 20.1)	7.4 (6.6, NR) <sup>g</sup>
HPV69 <sup>e</sup>	453	0.0	0.0	0.0	0.0	--	NR	--	--
HPV70	450	0.0 <sup>f</sup>	0.2 (0.0, 1.7)	0.5 (0.1, 2.0)	0.2 (0.0, 0.7)	49.3 (49.0, 49.5)	NR	10.6 (6.4, 14.8)	7.6 (7.6, NR) <sup>g</sup>
HPV73	435	1.2 (0.5, 2.8)	1.7 (0.8, 3.5)	3.7 (2.2, 6.2)	1.4 (0.8, 2.3)	48.0 (47.2, 48.7)	NR	12.2 (8.9, 15.5)	12.3 (4.6, 15.5)
HPV82	441	0.2 (0.0, 1.6)	0.7 (0.2, 2.2)	1.0 (0.4, 2.7)	0.4 (0.1, 1.0)	49.1 (48.7, 49.4)	NR	10.8 (4.8, 16.8)	8.3 (4.5, NR) <sup>g</sup>
Any Woman-Level	233	3.9 (2.0, 7.3)	9.8 (6.6, 14.5)	21.2 (16.2, 27.5)	9.5 (7.2, 12.5)	40.2 (37.9, 42.4)	NR	14.0 (11.9, 16.1)	12.8 (10.6, 14.6)
Any HPV-Level <sup>h</sup>	9,511	0.4 (0.2, 0.5)	1.0 (0.7, 1.3)	2.0 (1.6, 2.5)	0.8 (0.6, 1.0)	48.6 (46.6, 48.7)	NR	13.6 (12.3, 14.8)	12.3 (11.4, 13.5)
<b>Subgenus 3</b>									
HPV61	443	0.9 (0.4, 2.5)	1.2 (0.5, 2.8)	2.7 (1.4, 4.9)	1.2 (0.7, 2.1)	48.1 (47.4, 48.8)	NR	15.7 (10.9, 20.4)	15.1 (5.4, 22.0)
HPV62	416	0.7 (0.2, 2.3)	2.3 (1.2, 4.3)	4.1 (2.5, 6.8)	1.5 (0.9, 2.4)	47.9 (47.1, 48.7)	NR	11.0 (7.9, 14.0)	9.7 (5.1, 14.7)
HPV71 <sup>e</sup>	451	0.0	0.0	0.0	0.0	--	NR	--	--
HPV72 <sup>c</sup>	451	0.0	0.0	0.0	0.0	--	NR	--	--
HPV81	446	0.0 <sup>f</sup>	0.2 (0.0, 1.7)	0.2 (0.0, 1.7)	0.1 (0.0, 0.6)	49.3 (49.2, 49.5)	NR	--	NR
HPV83	444	0.2 (0.0, 1.6)	0.5 (0.1, 1.9)	0.5 (0.1, 1.9)	0.3 (0.1, 0.8)	49.1 (48.8, 49.5)	NR	11.7 (1.6, 21.9)	6.5 (4.3, NR) <sup>g</sup>
HPV84	413	1.5 (0.7, 3.3)	2.6 (1.4, 4.7)	4.1 (2.5, 6.7)	1.7 (1.0, 2.7)	47.6 (46.8, 48.5)	NR	12.3 (8.7, 15.9)	10.6 (5.1, 16.9)
HPV89	405	1.8 (0.8, 3.7)	3.7 (2.2, 6.1)	6.8 (4.6, 9.9)	2.7 (1.9, 4.0)	46.5 (45.4, 47.6)	NR	13.2 (10.3, 16.1)	11.6 (6.9, 18.2)

Any Woman-Level	336	4.2 (2.5, 7.1)	8.0 (5.5, 11.6)	13.5 (10.1, 17.9)	5.8 (4.3, 7.7)	43.5 (41.9, 45.1)	NR	12.1 (9.9, 14.4)	10.1 (6.2, 13.1)
Any HPV-Level <sup>b</sup>	3,469	0.6 (0.4, 0.9)	1.2 (0.9, 1.6)	2.2 (1.7, 2.8)	0.9 (0.7, 1.1)	48.5 (46.5, 48.7)	NR	12.8 (10.8, 14.9)	11.4 (7.6, 14.7)
<b>All 36 Types</b>									
Any Woman-Level	192	3.7 (1.8, 7.5)	11.8 (8.0, 17.4)	30.4 (23.9, 38.1)	13.3 (10.2, 17.3)	37.2 (34.6, 39.9)	NR	14.1 (12.3, 15.9)	13.1 (12.0, 14.8)
Any HPV-Level <sup>b</sup>	15,598	0.4 (0.3, 0.5)	1.1 (0.9, 1.4)	2.2 (1.8, 2.6)	0.9 (0.7, 1.0)	48.5 (46.5, 48.7)	NR	13.5 (12.4, 14.5)	12.2 (10.6, 13.6)

Abbreviations: CI, confidence interval; HPV, human papillomavirus; NR, not reached.

-- indicates an insufficient number of women were at risk (i.e., 0) or experienced the outcome (i.e., 0 or 1) to estimate this value.

<sup>a</sup> Sample size does not apply to conditional mean/median; sample size for conditional statistics is the number of double detections.

<sup>b</sup> Rate per 1000 woman-months, excepting HPV-level analyses of grouped types, which are provided as rate per 1000 infection-months.

<sup>c</sup> Time to detection including women/types that were censored. Actuarial means were found to be unreliable estimates of average time to detection due to right-censoring.

<sup>d</sup> Time to detection conditional on event of interest (i.e., time to detection restricted to women/types that had a single detection during the study).

<sup>e</sup> HPV type was never detected among women included in this analysis.

<sup>f</sup> HPV type was not detected by this time point among women included in this analysis.

<sup>g</sup> One bound of the survival function's 95% CI never reached or fell below 50%.

<sup>h</sup> 95% CIs for cumulative detection estimates generated using bootstrap resampling of woman-clusters. 95% CIs for detection rate per 1000 infection-months estimated via woman-clustered jackknife. 95% CIs for actuarial and conditional mean time to detection determined by woman-cluster resampling bootstrap. 95% CIs for actuarial and conditional median time to detection affixed by the times at which each (woman-clustered bootstrap-based) 95% CI bound of the actuarial and conditional survival functions (respectively) reached or fell below 50%.

**Table S2.** Conservative clearance of HPV infection present at baseline for individual HPV types, grouped types at the woman-level, and grouped types at the HPV-level, by subgenus.

	n <sup>a</sup>	Percent of Infection Uncleared, % (95% CI)			Clearance Rate <sup>b</sup> (95% CI)	Time (months) to Clearance (95% CI)			
		6 Months	12 Months	24 Months		Actuarial Mean <sup>c</sup>	Actuarial Median <sup>c</sup>	Conditional Mean <sup>d</sup>	Conditional Median <sup>d</sup>
<b>Subgenus 1</b>									
HPV6	18	69.8 (41.8, 86.3)	56.4 (29.4, 76.6)	49.4 (23.5, 70.9)	31.1 (15.6, 62.2)	19.9 (13.3, 26.6)	12.6 (5.7, NR) <sup>e</sup>	6.6 (4.0, 9.1)	5.7 (1.4, 11.3)
HPV11	2	NR	NR	NR	228.9 (57.2, 915.0)	4.4 (2.2, 6.5)	2.8 (2.8, NR) <sup>e</sup>	4.4 (2.2, 6.5)	2.8 (2.8, NR) <sup>e</sup>
HPV40	11	80.8 (42.4, 94.9)	57.7 (22.1, 81.9)	19.2 (1.0, 55.4)	52.5 (23.6, 116.9)	14.0 (8.7, 19.2)	12.6 (5.1, NR) <sup>e</sup>	9.9 (5.3, 14.5)	7.8 (4.7, NR) <sup>e</sup>
HPV42	34	84.9 (67.4, 93.4)	50.6 (31.6, 66.9)	24.3 (9.7, 42.4)	50.9 (33.2, 78.1)	16.0 (11.8, 20.1)	12.2 (8.0, 19.7)	9.5 (7.7, 11.4)	8.0 (7.1, 11.7)
HPV44	8	60.0 (19.6, 85.2)	60.0 (19.6, 85.2)	45.0 (10.8, 75.1)	33.4 (12.5, 89.0)	20.3 (9.6, 30.9)	13.5 (4.4, NR) <sup>e</sup>	7.1 (3.5, 10.8)	4.8 (4.4, NR) <sup>e</sup>
HPV54	27	88.9 (69.4, 96.3)	58.1 (37.0, 74.3)	28.4 (11.6, 48.0)	50.0 (31.9, 78.4)	16.8 (12.8, 20.7)	12.5 (8.8, 22.4)	12.5 (9.3, 15.7)	10.6 (8.1, 13.7)
All Woman-Level	86	80.8 (70.5, 87.8)	62.5 (50.8, 72.1)	46.7 (34.6, 57.8)	33.3 (24.7, 45.0)	21.1 (18.0, 24.1)	20.0 (12.2, NR) <sup>e</sup>	10.0 (8.1, 12.0)	8.0 (5.8, 11.2)
Any HPV-Level <sup>f</sup>	100	79.2 (71.3, 86.4)	53.9 (40.9, 62.5)	31.0 (21.6, 42.1)	46.4 (36.5, 59.3)	17.5 (14.7, 20.0)	12.5 (10.6, 14.5)	9.8 (8.4, 11.2)	8.0 (7.4, 9.9)
<b>Subgenus 2</b>									
HPV16	79	92.1 (83.3, 96.4)	79.2 (67.9, 87.0)	50.9 (37.9, 62.5)	25.0 (17.9, 35.0)	24.0 (21.0, 26.9)	24.0 (18.1, NR) <sup>e</sup>	12.8 (10.8, 14.8)	13.6 (8.9, 15.6)
HPV18	16	68.8 (40.5, 85.6)	50.0 (24.5, 71.1)	23.4 (6.5, 46.4)	64.2 (37.3, 110.6)	13.5 (9.5, 17.5)	11.9 (5.2, 18.2)	10.7 (7.3, 14.2)	11.7 (5.1, 12.4)
HPV26	0	--	--	--	--	--	--	--	--
HPV31	23	90.9 (68.1, 97.6)	71.7 (47.6, 86.2)	34.2 (14.3, 55.4)	41.6 (24.7, 70.3)	18.1 (13.5, 22.7)	13.5 (9.0, 30.2)	12.1 (8.5, 15.8)	12.0 (6.2, 13.5)
HPV33	5	60.0 (12.6, 88.2)	NR	NR	89.4 (28.8, 277.3)	7.2 (4.7, 9.7)	7.6 (4.1, NR) <sup>e</sup>	5.3 (3.6, 7.1)	4.3 (4.1, NR) <sup>e</sup>
HPV34	3	100.0 <sup>g</sup>	33.3 (0.9, 77.4)	NR	107.4 (34.6, 333.1)	9.3 (5.5, 13.1)	7.3 (6.7, NR) <sup>e</sup>	9.3 (5.5, 13.1)	7.3 (6.7, NR) <sup>e</sup>
HPV35	3	100.0 <sup>g</sup>	66.7 (5.4, 94.5)	NR	43.1 (10.8, 172.5)	15.7 (8.1, 23.3)	20.4 (6.2, NR) <sup>e</sup>	13.3 (3.5, 23.2)	6.2 (6.2, NR) <sup>e</sup>
HPV39	32	83.2 (64.2, 92.6)	65.7 (45.5, 79.9)	22.5 (7.7, 41.9)	41.6 (26.5, 65.2)	19.4 (14.2, 24.7)	17.7 (9.4, 19.7)	11.9 (9.2, 14.6)	11.9 (6.0, 17.7)
HPV45	8	75.0 (31.5, 93.1)	45.0 (10.8, 75.1)	30.0 (4.4, 62.8)	52.4 (21.8, 125.8)	15.3 (7.5, 23.2)	9.9 (5.5, NR) <sup>e</sup>	8.4 (6.0, 10.8)	8.3 (5.5, NR) <sup>e</sup>
HPV51	48	86.7 (72.7, 93.8)	58.9 (42.2, 72.2)	26.1 (11.4, 43.5)	40.1 (27.1, 59.3)	18.8 (15.0, 22.7)	17.9 (11.6, 21.8)	11.2 (8.9, 13.5)	10.1 (6.1, 13.2)
HPV52	35	87.5 (70.0, 95.1)	66.0 (45.7, 80.1)	40.7 (20.6, 60.0)	32.8 (20.1, 53.6)	20.2 (15.9, 24.5)	20.7 (8.7, NR) <sup>e</sup>	11.9 (8.3, 15.5)	7.4 (5.1, 17.7)
HPV53	34	93.8 (77.5, 98.4)	64.4 (44.9, 78.5)	45.2 (26.4, 62.2)	30.3 (18.8, 48.7)	22.5 (17.9, 27.2)	20.4 (11.5, NR) <sup>e</sup>	12.7 (9.6, 15.8)	9.7 (7.8, 17.2)
HPV56	21	85.7 (62.0, 95.2)	59.2 (34.2, 77.4)	18.5 (3.4, 43.2)	45.6 (26.5, 78.5)	17.6 (11.5, 23.7)	16.2 (7.8, 21.8)	10.9 (7.5, 14.2)	8.1 (5.1, 16.2)
HPV58	22	90.4 (66.8, 97.5)	62.2 (36.4, 80.0)	23.3 (6.6, 45.9)	47.2 (27.4, 81.2)	16.4 (11.9, 20.8)	12.9 (8.7, 21.1)	11.2 (8.6, 13.8)	9.9 (6.5, 12.9)
HPV59	27	85.2 (65.2, 94.2)	47.4 (27.0, 65.4)	12.9 (3.3, 29.4)	65.0 (42.4, 99.7)	13.0 (10.4, 15.5)	11.0 (8.0, 16.2)	11.0 (8.9, 13.1)	10.3 (7.7, 14.7)
HPV66	27	73.7 (52.6, 86.5)	41.0 (22.0, 59.1)	14.0 (3.7, 31.2)	73.0 (47.6, 111.9)	11.6 (8.9, 14.3)	8.5 (7.5, 14.7)	9.0 (7.2, 10.8)	8.0 (4.8, 10.2)
HPV67	26	80.4 (59.2, 91.4)	51.7 (30.8, 69.1)	NR	68.3 (44.0, 105.8)	12.5 (9.9, 15.1)	12.0 (7.8, 17.7)	10.7 (8.2, 13.2)	8.0 (5.4, 14.5)
HPV68	13	100.0 <sup>g</sup>	75.0 (40.8, 91.2)	50.0 (20.9, 73.6)	24.3 (10.9, 54.1)	22.8 (17.3, 28.2)	19.7 (9.8, NR) <sup>e</sup>	13.5 (10.4, 16.6)	11.7 (8.5, NR) <sup>e</sup>
HPV69	0	--	--	--	--	--	--	--	--
HPV70	3	100.0 <sup>g</sup>	100.0 <sup>g</sup>	50.0 (0.6, 91.0)	15.6 (2.2, 110.4)	24.7 (14.6, 34.9)	17.4 (17.4, NR) <sup>e</sup>	--	NR
HPV73	18	83.3 (56.8, 94.3)	43.3 (18.8, 65.7)	21.6 (5.4, 44.8)	51.2 (29.1, 90.2)	15.0 (10.4, 19.6)	12.0 (9.7, 18.4)	10.3 (7.7, 12.8)	9.9 (3.7, 12.6)
HPV82	12	55.0 (23.2, 78.3)	12.2 (0.7, 40.6)	NR	116.9 (62.9, 217.2)	8.0 (5.1, 10.8)	6.1 (4.1, 11.5)	7.4 (4.7, 10.1)	5.5 (2.8, 9.3)
All Woman-Level	220	94.8 (90.8, 97.1)	87.1 (81.6, 91.1)	64.2 (56.3, 71.0)	15.6 (12.2, 19.8)	31.1 (29.1, 33.2)	NR	14.2 (12.6, 15.9)	14.6 (12.0, 16.3)
Any HPV-Level <sup>f</sup>	455	85.6 (81.6, 88.8)	60.5 (55.8, 64.8)	30.1 (24.4, 34.5)	42.4 (37.8, 47.5)	20.0 (17.8, 21.4)	15.5 (13.5, 17.7)	11.1 (10.4, 11.9)	9.8 (8.5, 11.0)
<b>Subgenus 3</b>									
HPV61	10	77.8 (36.5, 93.9)	66.7 (28.2, 87.8)	53.3 (17.7, 79.6)	30.7 (12.8, 73.7)	21.0 (12.5, 29.4)	26.7 (3.9, NR) <sup>e</sup>	12.3 (5.0, 19.7)	9.7 (3.9, NR) <sup>e</sup>
HPV62	37	88.6 (72.4, 95.6)	67.7 (49.2, 80.7)	63.5 (44.3, 77.6)	22.2 (13.1, 37.4)	24.8 (20.3, 29.4)	NR	10.7 (6.8, 14.6)	7.4 (5.9, 8.8)
HPV71	2	100.0 <sup>g</sup>	NR	NR	61.0 (8.6, 433.0)	--	9.9 (NR, NR) <sup>e</sup>	--	NR
HPV72 <sup>h</sup>	2	100.0	100.0	100.0	0.0	--	NR	--	--
HPV81	7	100.0 <sup>g</sup>	100.0 <sup>g</sup>	NR	36.2 (11.7, 112.2)	15.0 (13.8, 16.1)	14.2 (13.5, NR) <sup>e</sup>	14.6 (13.3, 15.8)	14.2 (13.5, NR) <sup>e</sup>
HPV83	9	88.9 (43.3, 98.4)	77.8 (36.5, 93.9)	58.3 (15.7, 85.5)	21.0 (6.8, 65.0)	24.7 (14.6, 34.9)	NR	8.1 (4.4, 11.7)	6.1 (5.5, NR) <sup>e</sup>
HPV84	40	79.4 (63.0, 89.1)	39.0 (23.1, 54.6)	25.5 (12.0, 41.4)	62.3 (43.0, 90.2)	14.5 (10.5, 18.5)	8.5 (6.7, 13.1)	9.2 (6.9, 11.5)	7.3 (6.1, 8.5)
HPV89	48	87.2 (73.7, 94.0)	62.4 (46.0, 75.2)	39.2 (21.7, 56.3)	35.4 (23.3, 53.7)	22.3 (17.2, 27.4)	16.2 (9.7, NR) <sup>e</sup>	9.6 (7.7, 11.4)	8.8 (5.7, 11.3)
All Woman-Level	117	86.6 (78.7, 91.7)	71.7 (62.0, 79.3)	56.4 (45.4, 66.0)	24.0 (17.9, 32.1)	26.2 (23.1, 29.3)	NR	10.3 (8.5, 12.2)	8.5 (6.1, 10.4)
Any HPV-Level <sup>f</sup>	155	85.9 (78.8, 91.0)	60.2 (49.9, 67.4)	44.0 (33.7, 52.2)	35.5 (27.8, 45.4)	21.8 (18.0, 24.6)	16.2 (11.3, 25.0)	10.0 (8.7, 11.3)	8.2 (6.7, 8.8)

---

**All 36 Types**

---

All Woman-Level	261	94.9 (91.3, 97.0)	88.4 (83.6, 91.8)	74.7 (68.2, 80.1)	11.8 (9.2, 15.1)	33.3 (31.5, 35.0)	NR	13.8 (11.9, 15.7)	13.1 (9.8, 16.1)
Any HPV-Level <sup>f</sup>	710	84.8 (80.7, 87.4)	59.5 (55.0, 63.3)	32.9 (28.4, 37.6)	41.4 (37.1, 46.2)	20.2 (18.3, 21.5)	15.3 (13.1, 16.6)	10.7 (10.1, 11.4)	8.9 (8.3, 9.9)

---

Abbreviations: CI, confidence interval; HPV, human papillomavirus; NR, not reached.

-- indicates an insufficient number of women were at risk (i.e., 0) or experienced the outcome (i.e., 0 or 1) to estimate this value.

<sup>a</sup> Sample size does not apply to conditional mean/median; sample size for conditional statistics is the number of conservative clearances.

<sup>b</sup> Rate per 1000 woman-months, excepting HPV-level analyses of grouped types, which are provided as rate per 1000 infection-months.

<sup>c</sup> Time to clearance including women/infections that were censored.

<sup>d</sup> Time to clearance conditional on event of interest (i.e., time to clearance restricted to women/infections that had a conservative clearance during the study).

<sup>e</sup> Bound(s) of the survival function's 95% CI never reached or fell below 50%.

<sup>f</sup> 95% CIs for uncleared infection estimates generated using bootstrap resampling of woman-clusters. 95% CIs for clearance rate per 1000 infection-months estimated via woman-clustered jackknife. 95% CIs for actuarial and conditional mean time to clearance determined by woman-cluster resampling bootstrap. 95% CIs for actuarial and conditional median time to clearance affixed by the times at which each (woman-clustered bootstrap-based) 95% CI bound of the actuarial and conditional survival functions (respectively) reached or fell below 50%.

<sup>g</sup> HPV type was not cleared by this time point among women included in this analysis.

<sup>h</sup> HPV type was never cleared among women included in this analysis.

**Table S3.** Conservative clearance of incident infection for individual HPV types, grouped types at the woman-level, and grouped types at the HPV-level, by subgenus.

	n <sup>a</sup>	Percent of Infection Uncleared, % (95% CI)			Clearance Rate <sup>b</sup> (95% CI)	Time (months) to Clearance (95% CI)				
		6 Months	12 Months	24 Months		Actuarial Mean <sup>c</sup>	Actuarial Median <sup>c</sup>	Conditional Mean <sup>d</sup>	Conditional Median <sup>d</sup>	
<b>Subgenus 1</b>										
HPV6	32	83.0 (63.9, 92.6)	47.3 (25.0, 66.7)	20.3 (1.7, 53.4)	48.3 (28.6, 81.5)	14.3 (11.0, 17.7)	10.5 (8.5, NR) <sup>e</sup>	8.6 (6.3, 11.0)	7.6 (4.8, 9.6)	
HPV11 <sup>f</sup>	1	NR	NR	NR	0.0	--	NR	--	--	
HPV40	14	92.3 (56.6, 98.9)	73.9 (38.5, 90.8)	NR	24.4 (9.1, 64.9)	16.7 (13.0, 20.3)	16.2 (8.7, NR) <sup>e</sup>	10.0 (6.1, 13.9)	8.7 (5.2, NR) <sup>e</sup>	
HPV42	34	87.3 (69.6, 95.1)	67.7 (46.6, 81.9)	41.9 (19.4, 63.0)	32.1 (18.6, 55.3)	18.8 (14.8, 22.8)	16.0 (10.8, NR) <sup>e</sup>	9.9 (7.5, 12.2)	8.6 (5.6, 13.7)	
HPV44	4	100.0 <sup>g</sup>	66.7 (5.4, 94.5)	NR	24.7 (3.5, 175.7)	14.5 (8.6, 20.4)	NR	--	NR	
HPV54	19	89.5 (64.1, 97.3)	78.3 (42.9, 93.2)	78.3 (42.9, 93.2)	14.5 (4.7, 45.0)	20.8 (16.8, 24.7)	NR	5.7 (1.9, 9.5)	3.7 (3.0, NR) <sup>e</sup>	
All Woman-Level	69	88.1 (77.6, 93.9)	68.7 (53.9, 79.6)	41.4 (19.1, 62.6)	27.8 (18.3, 42.2)	19.6 (16.5, 22.7)	22.1 (14.7, NR) <sup>e</sup>	9.4 (7.4, 11.4)	8.7 (5.3, 10.8)	
Any HPV-Level <sup>h</sup>	104	88.4 (81.3, 93.4)	72.7 (63.0, 79.9)	64.5 (53.6, 72.1)	18.3 (13.1, 25.9)	26.9 (23.5, 29.1)	NR	8.9 (7.6, 10.5)	NR	
<b>Subgenus 2</b>										
HPV16	22	88.5 (61.4, 97.0)	77.5 (42.1, 92.8)	NR	26.1 (10.9, 62.7)	15.2 (11.9, 18.6)	15.3 (9.0, NR) <sup>e</sup>	9.5 (5.9, 13.1)	9.0 (4.8, NR) <sup>e</sup>	
HPV18	10	88.9 (43.3, 98.4)	76.2 (33.2, 93.5)	76.2 (33.2, 93.5)	13.9 (3.5, 55.5)	24.6 (17.8, 31.4)	NR	6.7 (5.1, 8.3)	5.6 (5.6, NR) <sup>e</sup>	
HPV26	0	--	--	--	--	--	--	--	--	
HPV31	19	94.1 (65.0, 99.2)	70.6 (38.9, 88.0)	NR	28.2 (12.7, 62.7)	15.9 (13.2, 18.6)	19.7 (8.9, NR) <sup>e</sup>	11.6 (7.5, 15.6)	8.9 (5.3, NR) <sup>e</sup>	
HPV33	4	50.0 (5.8, 84.5)	NR	NR	153.1 (57.5, 408.0)	6.5 (4.5, 8.5)	5.5 (3.7, NR) <sup>e</sup>	6.5 (4.5, 8.5)	5.5 (3.7, NR) <sup>e</sup>	
HPV34 <sup>f</sup>	2	100.0	NR	NR	0.0	--	NR	--	--	
HPV35	4	100.0 <sup>g</sup>	100.0 <sup>g</sup>	NR	18.4 (2.6, 130.9)	20.5 (17.7, 23.3)	18.5 (18.5, NR) <sup>e</sup>	--	NR	
HPV39	19	94.7 (68.1, 99.2)	67.6 (37.9, 85.4)	48.3 (19.5, 72.3)	30.6 (14.6, 64.2)	19.6 (14.0, 25.3)	14.7 (8.5, NR) <sup>e</sup>	9.1 (6.8, 11.5)	8.5 (4.7, 12.6)	
HPV45	8	87.5 (38.7, 98.1)	87.5 (38.7, 98.1)	87.5 (38.7, 98.1)	10.5 (1.5, 74.5)	25.5 (20.1, 31.0)	NR	--	NR	
HPV51	23	86.7 (64.3, 95.5)	70.1 (39.9, 87.2)	48.1 (17.7, 73.4)	27.2 (12.9, 57.0)	19.2 (14.3, 24.1)	16.3 (11.3, NR) <sup>e</sup>	9.2 (5.5, 12.9)	9.4 (3.6, 15.2)	
HPV52	19	94.7 (68.1, 99.2)	53.3 (27.9, 73.3)	16.7 (1.3, 48.0)	50.0 (27.7, 90.3)	14.8 (10.8, 18.7)	13.7 (6.8, 23.0)	10.2 (7.0, 13.4)	9.0 (6.2, 13.7)	
HPV53	25	87.5 (66.1, 95.8)	76.5 (51.8, 89.7)	68.8 (41.7, 85.2)	22.2 (10.0, 49.5)	19.2 (15.5, 22.9)	NR	6.5 (3.8, 9.1)	4.2 (3.6, NR) <sup>e</sup>	
HPV56	16	85.7 (53.9, 96.2)	43.5 (14.0, 70.3)	NR	49.3 (23.5, 103.4)	11.8 (8.9, 14.7)	9.2 (7.9, NR) <sup>e</sup>	8.9 (6.2, 11.5)	8.2 (5.3, 9.2)	
HPV58	13	100.0 <sup>g</sup>	100.0 <sup>g</sup>	66.7 (5.4, 94.5)	5.2 (0.7, 36.7)	30.4 (23.9, 36.9)	NR	--	NR	
HPV59	18	82.2 (54.3, 93.9)	63.4 (31.1, 83.7)	63.4 (31.1, 83.7)	27.2 (11.3, 65.4)	21.8 (15.4, 28.2)	NR	6.0 (4.2, 7.9)	5.6 (3.4, NR) <sup>e</sup>	
HPV66	35	81.7 (63.7, 91.3)	47.6 (25.7, 66.6)	NR	57.8 (35.9, 93.0)	11.9 (9.5, 14.4)	10.3 (8.6, 14.9)	8.7 (6.5, 10.9)	8.6 (4.6, 10.3)	
HPV67	25	100.0 <sup>g</sup>	56.5 (31.2, 75.5)	NR	41.1 (22.7, 74.2)	13.3 (11.2, 15.4)	14.7 (8.3, NR) <sup>e</sup>	10.2 (8.4, 12.0)	8.5 (7.4, 13.3)	
HPV68	6	80.0 (20.4, 96.9)	53.3 (6.8, 86.3)	NR	38.5 (9.6, 153.9)	12.0 (8.5, 15.4)	NR	8.0 (4.6, 11.4)	5.6 (5.6, NR) <sup>e</sup>	
HPV69	0	--	--	--	--	--	--	--	--	
HPV70 <sup>f</sup>	5	100.0	100.0	100.0	0.0	--	NR	--	--	
HPV73	21	95.0 (69.5, 99.3)	63.3 (35.7, 81.7)	NR	44.7 (24.1, 83.1)	14.2 (11.6, 16.8)	16.3 (8.8, 17.2)	11.4 (8.7, 14.1)	9.0 (4.8, 16.3)	
HPV82	9	88.9 (43.3, 98.4)	31.8 (4.9, 64.7)	NR	58.0 (24.1, 139.3)	10.6 (7.8, 13.5)	9.4 (3.8, NR) <sup>e</sup>	8.0 (6.1, 9.8)	8.9 (3.8, NR) <sup>e</sup>	
All Woman-Level	68	95.4 (86.5, 98.5)	78.6 (64.3, 87.7)	65.2 (44.2, 80.0)	16.3 (9.7, 27.5)	29.8 (25.3, 34.2)	NR	9.1 (6.5, 11.6)	8.1 (4.9, 10.1)	
Any HPV-Level <sup>h</sup>	303	90.4 (86.3, 93.6)	72.1 (67.1, 77.3)	61.1 (54.6, 66.8)	20.5 (16.6, 25.6)	29.8 (24.6, 31.7)	NR	9.3 (8.4, 10.2)	NR	
<b>Subgenus 3</b>										
HPV61	16	92.9 (59.1, 99.0)	83.6 (48.0, 95.7)	NR	17.9 (5.8, 55.4)	19.0 (14.5, 23.5)	NR	8.5 (5.1, 11.9)	7.9 (5.2, NR) <sup>e</sup>	
HPV62	25	96.0 (74.8, 99.4)	78.8 (51.8, 91.7)	51.7 (22.1, 74.9)	27.2 (13.6, 54.4)	20.3 (15.4, 25.2)	29.0 (12.2, NR) <sup>e</sup>	12.4 (7.5, 17.3)	10.8 (3.7, 14.4)	
HPV71	0	--	--	--	--	--	--	--	--	
HPV72	0	--	--	--	--	--	--	--	--	
HPV81	2	100.0 <sup>g</sup>	100.0 <sup>g</sup>	NR	44.8 (6.3, 318.2)	--	12.2 (NR, NR) <sup>e</sup>	--	NR	
HPV83	7	100.0 <sup>g</sup>	20.0 (0.8, 58.2)	NR	66.0 (24.8, 175.9)	9.6 (7.9, 11.3)	8.8 (7.3, NR) <sup>e</sup>	8.7 (7.7, 9.8)	8.5 (7.3, NR) <sup>e</sup>	
HPV84	34	79.3 (59.4, 90.2)	52.6 (31.2, 70.2)	46.8 (25.4, 65.6)	39.0 (22.6, 67.1)	18.1 (13.4, 22.7)	13.9 (6.9, NR) <sup>e</sup>	6.9 (5.4, 8.4)	6.1 (4.5, 8.5)	
HPV89	43	90.2 (75.9, 96.2)	69.5 (51.3, 82.0)	54.9 (29.0, 74.7)	25.7 (14.9, 44.3)	21.0 (17.3, 24.7)	NR	8.3 (5.9, 10.7)	6.7 (4.2, 10.5)	
All Woman-Level	71	89.4 (79.1, 94.8)	70.6 (56.6, 80.7)	52.4 (35.2, 67.0)	29.2 (19.6, 43.6)	20.3 (17.3, 23.2)	29.0 (12.9, NR) <sup>e</sup>	9.4 (7.1, 11.7)	6.8 (5.7, 10.8)	
Any HPV-Level <sup>h</sup>	127	90.5 (83.7, 94.5)	73.0 (64.3, 79.8)	65.2 (53.8, 72.4)	19.4 (14.1, 27.1)	26.6 (23.5, 28.9)	NR	8.8 (7.3, 10.5)	NR	

---

**All 36 Types**

---

All Woman-Level	65	96.8 (87.7, 99.2)	85.1 (72.3, 92.3)	72.1 (50.6, 85.5)	11.8 (6.5, 21.3)	31.9 (27.9, 36.0)	NR	9.7 (6.8, 12.7)	8.7 (5.3, 12.6)
Any HPV-Level <sup>h</sup>	534	90.0 (86.9, 92.4)	72.5 (68.4, 76.8)	62.7 (57.9, 66.9)	19.8 (16.8, 23.4)	30.1 (25.3, 31.4)	NR	9.1 (8.4, 9.9)	NR

---

Abbreviations: CI, confidence interval; HPV, human papillomavirus; NR, not reached.

-- indicates an insufficient number of women were at risk (i.e., 0) or experienced the outcome (i.e., 0 or 1) to estimate this value.

<sup>a</sup> Sample size does not apply to conditional mean/median; sample size for conditional statistics is the number of conservative clearances.

<sup>b</sup> Rate per 1000 woman-months, excepting HPV-level analyses of grouped types, which are provided as rate per 1000 infection-months.

<sup>c</sup> Time to clearance including women/infections that were censored.

<sup>d</sup> Time to clearance conditional on event of interest (i.e., time to clearance restricted to women/infections that had a conservative clearance during the study).

<sup>e</sup> Bound(s) of the survival function's 95% CI never reached or fell below 50%.

<sup>f</sup> HPV type was not detected by this time point among women included in this analysis.

<sup>g</sup> HPV type was not cleared by this time point among women included in this analysis.

<sup>h</sup> 95% CIs for uncleared infection estimates generated using bootstrap resampling of woman-clusters. 95% CIs for clearance rate per 1000 infection-months estimated via woman-clustered jackknife. 95% CIs for actuarial and conditional mean time to clearance determined by woman-cluster resampling bootstrap. 95% CIs for actuarial and conditional median time to clearance affixed by the times at which each (woman-clustered bootstrap-based) 95% CI bound of the actuarial and conditional survival functions (respectively) reached or fell below 50%.

**Table S4.** Sensitivity analysis: Actuarial mean time (months) to detection of incident infection with survival functions extended exponentially to 0 for individual HPV types, grouped types at the woman-level, and grouped types at the HPV-level, by subgenus.

	Single Detection		Double Detection	
	Mean (95% CI)	Successful Reps. (%)	Mean (95% CI)	Successful Reps. (%)
<b>Subgenus 1</b>				
HPV6	223.1 (117.5, 441.9)	100.0	742.1 (487.6, 1,240.4)	100.0
HPV11	1,844.4 (661.2, 17,133.2)	97.4	--	---
HPV40	256.2 (87.7, 958.7)	100.0	2,508.8 (1,336.9, 7,994.4)	100.0
HPV42	193.7 (122.3, 306.4)	100.0	723.5 (475.0, 1,206.4)	100.0
HPV44	914.2 (464.1, 2,932.4)	100.0	6,631.4 (2,814.9, 21,385.5)	95.5
HPV54	377.4 (244.7, 647.1)	100.0	926.4 (530.9, 1,961.8)	100.0
Any Woman-Level	101.8 (78.8, 130.7)	100.0	230.4 (171.5, 321.4)	100.0
Any HPV-Level <sup>a</sup>	348.9 (236.5, 514.0)	100.0	1,417.2 (1,078.0, 1,916.2)	100.0
<b>Subgenus 2</b>				
HPV16	290.8 (178.3, 522.6)	100.0	713.4 (427.4, 1,393.3)	100.0
HPV18	827.9 (477.0, 2,206.7)	100.0	2,254.4 (1,087.8, 9,565.9)	99.5
HPV26	18,369.3 (4,677.2, 19,061.6)	62.6	--	--
HPV31	276.1 (124.1, 704.0)	100.0	1,426.7 (834.5, 3,639.8)	100.0
HPV33	1,123.2 (388.3, 9,839.7)	99.7	--	--
HPV34	8,656.8 (3,300.0, 18,962.7)	87.0	--	--
HPV35	2,714.8 (1,203.0, 10,662.2)	99.8	6,815.1 (2,897.6, 21,583.3)	95.1
HPV39	394.6 (224.1, 762.2)	100.0	1,199.3 (748.5, 2,393.7)	100.0
HPV45	286.1 (97.0, 1,638.4)	100.0	6,055.3 (2,603.9, 18,814.3)	94.3
HPV51	194.3 (88.8, 453.3)	100.0	985.3 (606.7, 1,976.5)	100.0
HPV52	192.4 (78.8, 592.6)	100.0	1,620.6 (985.3, 3,669.8)	100.0
HPV53	370.7 (253.7, 560.2)	100.0	883.3 (573.9, 1,567.5)	100.0
HPV56	266.4 (99.5, 1,073.1)	100.0	1,598.5 (961.1, 3,491.8)	100.0
HPV58	843.1 (502.2, 1,695.8)	100.0	1,279.5 (723.0, 3,341.2)	100.0
HPV59	385.4 (187.0, 940.9)	100.0	1,164.2 (585.9, 3,202.9)	100.0
HPV66	158.3 (77.1, 368.3)	100.0	926.6 (608.8, 1,689.3)	100.0
HPV67	419.5 (263.5, 718.4)	100.0	1,302.8 (796.3, 2,736.0)	100.0
HPV68	2,739.6 (1,440.4, 10,049.3)	99.6	3,397.9 (1,647.4, 15,699.2)	98.9
HPV69	--	--	--	--
HPV70	2,209.5 (1,084.4, 8,069.4)	99.8	9,835.8 (3,851.2, 21,138.3)	84.7
HPV73	370.0 (178.9, 899.8)	100.0	1,188.1 (769.3, 2,254.4)	100.0
HPV82	1,791.4 (1,040.6, 4,279.5)	100.0	4,774.3 (2,205.4, 20,347.1)	98.2
Any Woman-Level	46.5 (30.7, 74.7)	100.0	148.0 (106.4, 211.9)	100.0
Any HPV-Level <sup>a</sup>	462.6 (305.6, 679.9)	100.0	1,892.1 (1,540.6, 2,339.2)	100.0
<b>Subgenus 3</b>				
HPV61	562.5 (366.5, 972.5)	100.0	1,160.4 (680.3, 2,448.7)	100.0
HPV62	129.6 (66.0, 459.9)	100.0	1,168.5 (753.2, 2,173.4)	100.0
HPV71	--	--	--	--
HPV72	--	--	--	--
HPV81	1,931.4 (888.5, 10,161.0)	99.6	20,643.8 (5,167.0, 21,187.7)	65.0
HPV83	2,608.7 (1,435.7, 9,580.1)	99.9	5,877.5 (2,391.1, 21,533.9)	93.9
HPV84	167.1 (90.7, 313.0)	100.0	918.7 (579.4, 1,639.4)	100.0
HPV89	229.1 (165.8, 325.9)	100.0	530.9 (351.7, 908.0)	100.0
Any Woman-Level	56.4 (37.6, 91.8)	100.0	261.2 (189.7, 359.7)	100.0
Any HPV-Level <sup>a</sup>	403.9 (281.2, 596.0)	100.0	1,715.7 (1,300.2, 2,258.2)	100.0
<b>All 36 Types</b>				
Any Woman-Level	45.8 (28.9, 71.9)	100.0	106.7 (77.3, 146.1)	100.0
Any HPV-Level <sup>a</sup>	426.0 (298.5, 591.6)	100.0	1,753.8 (1,457.7, 2,102.7)	100.0

Abbreviations: CI, confidence interval; HPV, human papillomavirus; reps., replications.

-- indicates an insufficient number of women were at risk (i.e., 0) or experienced the outcome (i.e., 0 or 1) to estimate this value.

<sup>a</sup> 95% CIs for mean times to detection determined by woman-cluster resampling bootstraps.

**Table S5.** Sensitivity analysis: Actuarial mean time (months) to clearance of infection with survival functions extended exponentially to 0 for individual HPV types, grouped types at the woman-level, and grouped types at the HPV-level, by subgenus.

	Liberal Clearance				Conservative Clearance			
	Infections Present at Baseline		Incident Infections		Infections Present at Baseline		Incident Infections	
	Mean (95% CI)	Successful Reps. (%)	Mean (95% CI)	Successful Reps. (%)	Mean (95% CI)	Successful Reps. (%)	Mean (95% CI)	Successful Reps. (%)
<b>Subgenus 1</b>								
HPV6	13.7 (9.3, 29.9)	100.0	12.1 (9.1, 17.0)	100.0	43.3 (17.8, 107.5)	100.0	17.5 (11.0, 35.5)	100.0
HPV11	4.4 (2.8, 5.9)	75.6	--	--	4.4 (2.8, 5.9)	75.1	--	--
HPV40	13.0 (6.8, 27.2)	100.0	11.5 (9.1, 14.2)	100.0	16.8 (9.2, 44.6)	100.0	31.5 (13.0, 173.5)	98.2
HPV42	15.0 (11.6, 21.2)	100.0	19.4 (11.9, 32.2)	100.0	21.8 (12.4, 37.9)	100.0	33.0 (16.4, 66.6)	100.0
HPV44	15.3 (7.0, 28.5)	100.0	11.3 (7.2, 18.2)	94.9	40.6 (9.5, 195.6)	99.7	44.4 (7.2, 81.2)	63.7
HPV54	13.3 (10.0, 19.3)	100.0	15.0 (10.9, 26.9)	100.0	16.8 (12.7, 25.9)	100.0	99.4 (32.6, 470.3)	96.2
All Woman-Level	15.6 (13.2, 20.7)	100.0	19.2 (13.3, 29.8)	100.0	34.3 (24.0, 50.2)	100.0	33.4 (18.3, 57.8)	100.0
Any HPV-Level <sup>a</sup>	13.9 (11.9, 16.5)	100.0	28.9 (20.7, 38.9)	100.0	23.2 (17.0, 32.3)	100.0	80.6 (57.2, 117.3)	100.0
<b>Subgenus 2</b>								
HPV16	28.5 (20.2, 39.7)	100.0	21.2 (10.9, 71.9)	99.9	44.6 (30.8, 66.3)	100.0	24.8 (11.6, 112.6)	99.5
HPV18	12.5 (9.3, 18.2)	100.0	40.4 (11.8, 148.8)	99.5	13.5 (9.9, 20.7)	100.0	109.1 (23.4, 285.6)	87.0
HPV26	--	--	--	--	--	--	--	--
HPV31	15.5 (11.5, 21.7)	100.0	11.3 (8.5, 19.9)	100.0	21.2 (14.4, 42.8)	100.0	15.9 (13.2, 79.5)	100.0
HPV33	9.9 (4.9, 38.2)	97.6	6.5 (4.6, 8.6)	97.8	9.9 (4.8, 38.2)	97.4	6.5 (4.6, 8.5)	97.8
HPV34	9.3 (6.7, 14.0)	100.0	5.9 (5.8, 6.0)	100.0	9.3 (6.7, 14.0)	100.0	--	--
HPV35	15.7 (6.2, 47.6)	89.8	16.6 (7.7, 22.5)	98.5	15.7 (6.2, 47.6)	90.6	36.8 (18.5, 58.2)	68.4
HPV39	14.2 (11.4, 18.4)	100.0	17.5 (10.0, 35.0)	100.0	25.7 (14.3, 43.9)	100.0	39.6 (14.9, 107.3)	100.0
HPV45	9.4 (6.7, 12.5)	100.0	9.4 (6.2, 14.5)	100.0	23.1 (8.1, 80.6)	100.0	212.4 (25.9, 298.4)	63.6
HPV51	16.0 (13.0, 20.7)	100.0	13.7 (9.8, 17.9)	100.0	25.8 (15.9, 41.6)	100.0	37.6 (15.1, 117.8)	99.9
HPV52	13.9 (10.3, 20.2)	100.0	15.4 (10.0, 27.0)	100.0	28.7 (17.5, 54.4)	100.0	17.2 (10.8, 33.7)	100.0
HPV53	18.5 (15.0, 22.6)	100.0	13.7 (10.7, 23.1)	100.0	34.2 (19.8, 66.3)	100.0	64.4 (26.5, 188.3)	100.0
HPV56	15.8 (9.9, 30.8)	100.0	10.7 (8.2, 15.2)	100.0	22.0 (11.8, 45.8)	100.0	11.8 (9.3, 34.4)	100.0
HPV58	18.3 (11.7, 30.6)	100.0	21.5 (15.4, 29.4)	99.9	21.4 (12.4, 41.0)	100.0	87.1 (22.3, 155.7)	63.2
HPV59	11.5 (9.2, 14.4)	100.0	13.7 (8.1, 21.3)	100.0	14.6 (10.7, 20.8)	100.0	64.4 (16.3, 231.0)	99.6
HPV66	10.9 (8.7, 13.3)	100.0	9.7 (8.0, 11.6)	100.0	13.4 (9.4, 20.8)	100.0	11.9 (9.6, 17.5)	100.0
HPV67	10.7 (8.6, 13.3)	100.0	10.9 (9.1, 13.6)	100.0	13.1 (10.1, 17.6)	100.0	18.3 (12.0, 35.3)	100.0
HPV68	29.6 (15.6, 66.3)	100.0	14.0 (7.9, 52.1)	98.0	45.9 (21.3, 133.2)	99.8	24.8 (8.5, 82.6)	91.4
HPV69	--	--	--	--	--	--	--	--
HPV70	18.0 (4.7, 32.0)	95.2	14.4 (6.2, 23.2)	99.7	47.8 (17.4, 111.9)	65.7	--	--
HPV73	11.3 (7.7, 16.9)	100.0	11.0 (8.8, 13.4)	100.0	19.4 (10.9, 35.4)	100.0	15.6 (11.8, 26.5)	100.0
HPV82	7.1 (5.1, 9.6)	100.0	11.9 (7.2, 23.7)	100.0	8.0 (5.4, 11.4)	100.0	15.0 (8.0, 41.1)	99.5
All Woman-Level	30.9 (23.9, 41.4)	100.0	21.5 (13.6, 33.4)	100.0	77.0 (57.0, 98.9)	100.0	90.0 (39.1, 185.4)	100.0
Any HPV-Level <sup>a</sup>	15.5 (14.1, 17.8)	100.0	25.4 (18.2, 31.9)	100.0	27.9 (23.5, 32.7)	100.0	82.5 (61.0, 103.3)	100.0
<b>Subgenus 3</b>								
HPV61	24.0 (11.4, 73.2)	100.0	23.1 (9.8, 66.7)	99.9	28.2 (12.9, 103.6)	99.9	58.3 (16.0, 289.7)	96.6
HPV62	20.5 (15.8, 28.6)	100.0	13.1 (9.4, 17.0)	100.0	52.0 (27.7, 103.2)	100.0	20.3 (15.3, 62.2)	100.0
HPV71	8.2 (6.5, 9.9)	100.0	--	--	--	--	--	--
HPV72	--	--	--	--	--	--	--	--
HPV81	12.6 (8.2, 27.4)	99.9	--	--	15.0 (13.6, 39.2)	98.6	--	--
HPV83	26.6 (10.9, 85.4)	100.0	10.4 (7.6, 20.8)	100.0	63.7 (13.7, 304.4)	97.7	11.2 (8.1, 32.4)	99.9
HPV84	11.0 (8.2, 14.8)	100.0	11.5 (8.6, 15.5)	100.0	17.2 (11.0, 28.5)	100.0	36.6 (16.7, 71.8)	100.0
HPV89	12.3 (9.9, 15.3)	100.0	14.4 (11.7, 17.3)	100.0	39.1 (18.8, 65.5)	100.0	47.8 (22.0, 107.4)	100.0



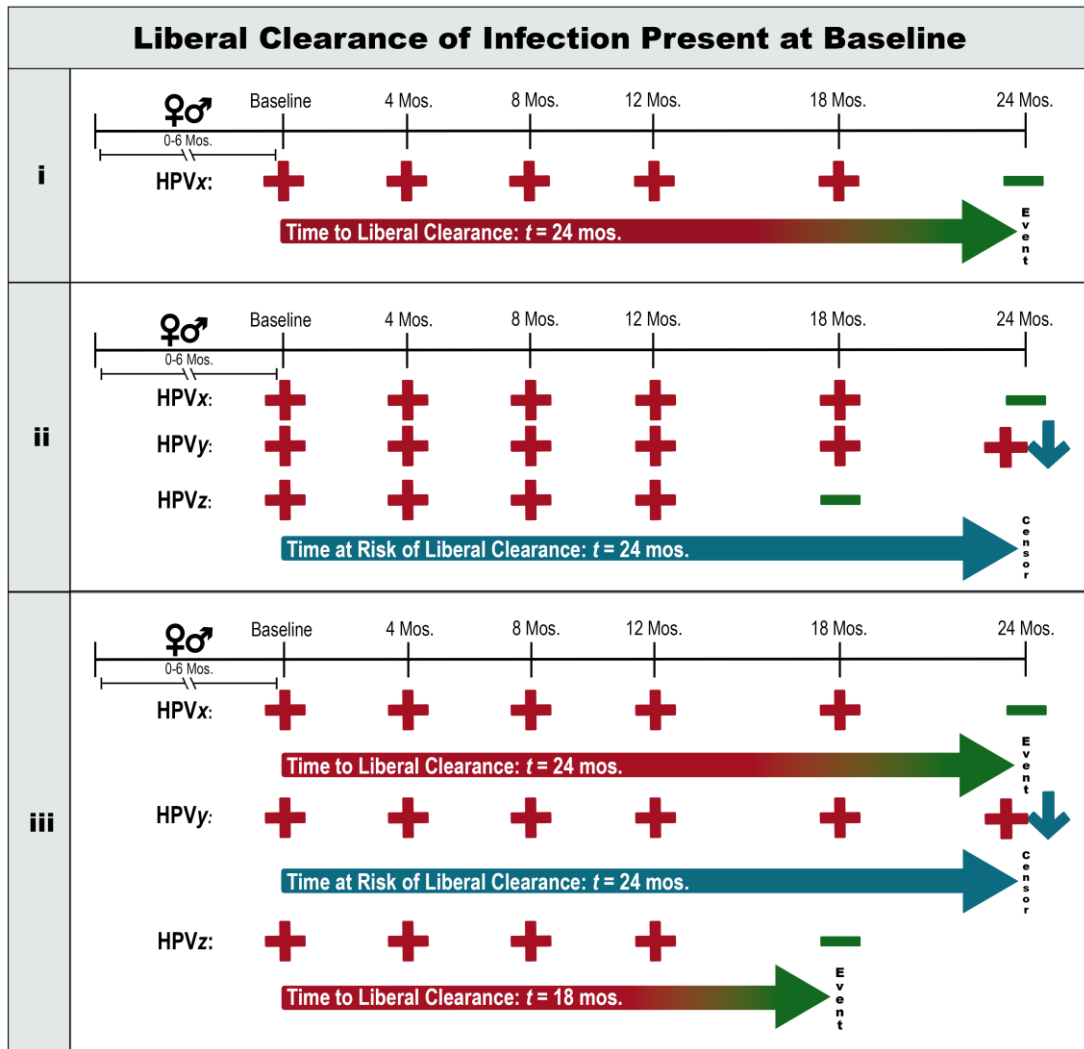
All Woman-Level	18.4 (15.8, 23.8)	100.0	15.3 (13.1, 18.5)	100.0	55.7 (38.5, 77.5)	100.0	26.1 (18.1, 65.0)	100.0
Any HPV-Level <sup>a</sup>	14.9 (12.6, 18.2)	100.0	22.8 (17.1, 29.6)	100.0	34.7 (24.3, 47.3)	100.0	72.2 (46.9, 109.5)	100.0
<b>All 36 Types</b>								
All Woman-Level	32.3 (24.9, 43.8)	100.0	41.3 (21.7, 78.4)	100.0	104.1 (77.3, 137.8)	100.0	118.8 (49.4, 269.3)	100.0
Any HPV-Level <sup>a</sup>	15.0 (13.7, 16.5)	100.0	26.3 (20.1, 31.6)	100.0	28.6 (24.1, 32.7)	100.0	84.5 (63.7, 99.9)	100.0

Abbreviations: CI, confidence interval; HPV, human papillomavirus; reps., replications.

-- indicates an insufficient number of women were at risk (i.e., 0) or experienced the outcome (i.e., 0 or 1) to estimate this value.

<sup>a</sup> 95% CIs for mean times to clearance determined by woman-cluster resampling bootstraps.

SUPPLEMENTARY FIGURES



Abbreviations: HPV, human papillomavirus; mos., months (1 month = 30.437 days).

**Figure S1.** Analytical framework for liberal clearance of infection present at baseline.

**i.** Woman-level analysis for a given HPV type: Woman must be positive for HPV<sub>x</sub> at baseline. She has a liberal clearance at 24 months, when she tests negative for HPV<sub>x</sub>.

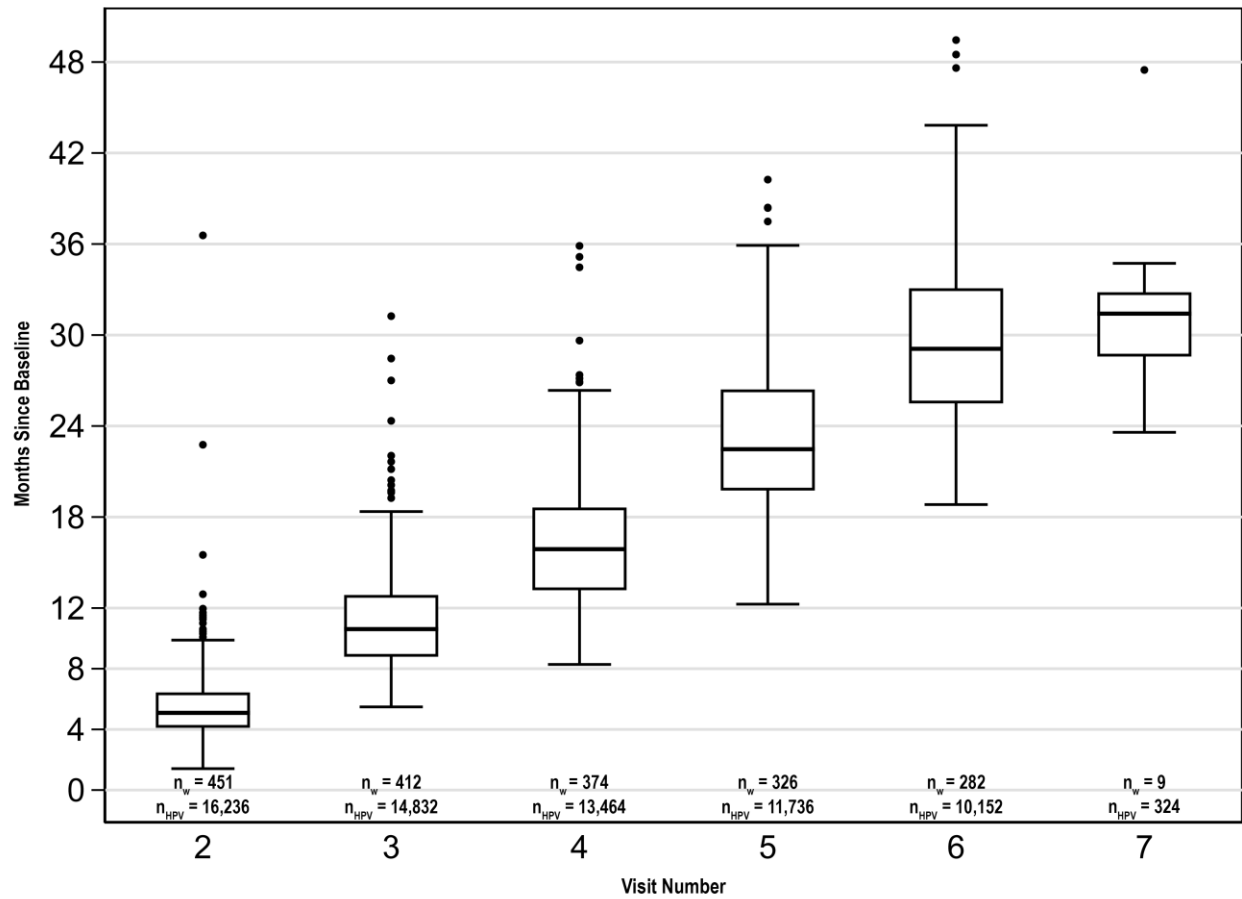
**ii.** Woman-level analysis for grouped HPV types *x*, *y*, and *z*: Woman must be positive for one or more types at baseline. She never clears all three types at a single visit, so she is right-censored (24 months).

**iii.** HPV-level analysis for grouped HPV types *x*, *y*, and *z*: HPV types must be present at baseline. There will be a liberal clearance each first time woman tests negative for any type following a visit where she was positive for the same type. HPV<sub>x</sub> and HPV<sub>z</sub> have liberal clearances at 24- and 18-months, respectively; HPV<sub>y</sub> is right-censored (24 months).

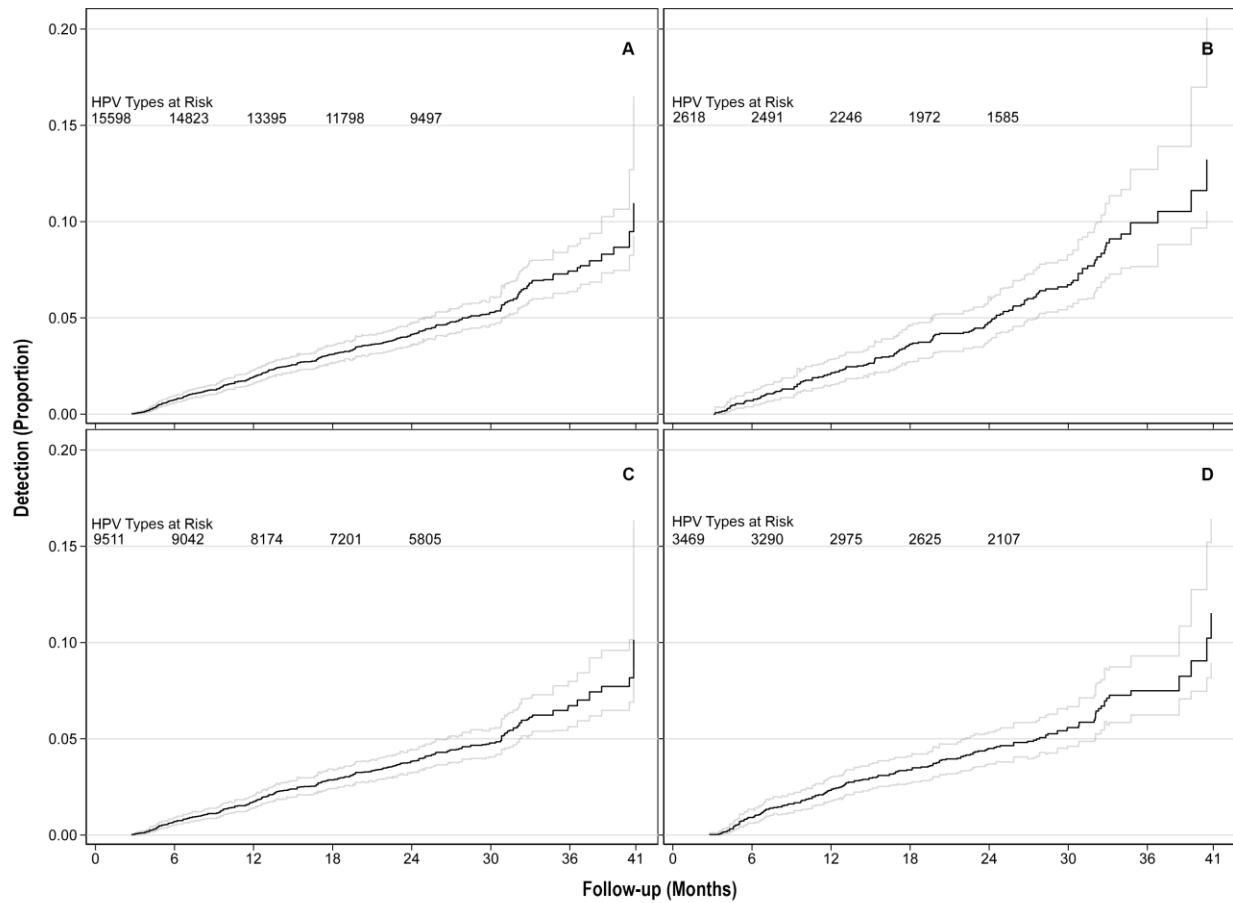
Symbol Legend:

♀♂ : Debut of woman's sexual relationship with a male partner occurred 0-6 months pre-baseline.

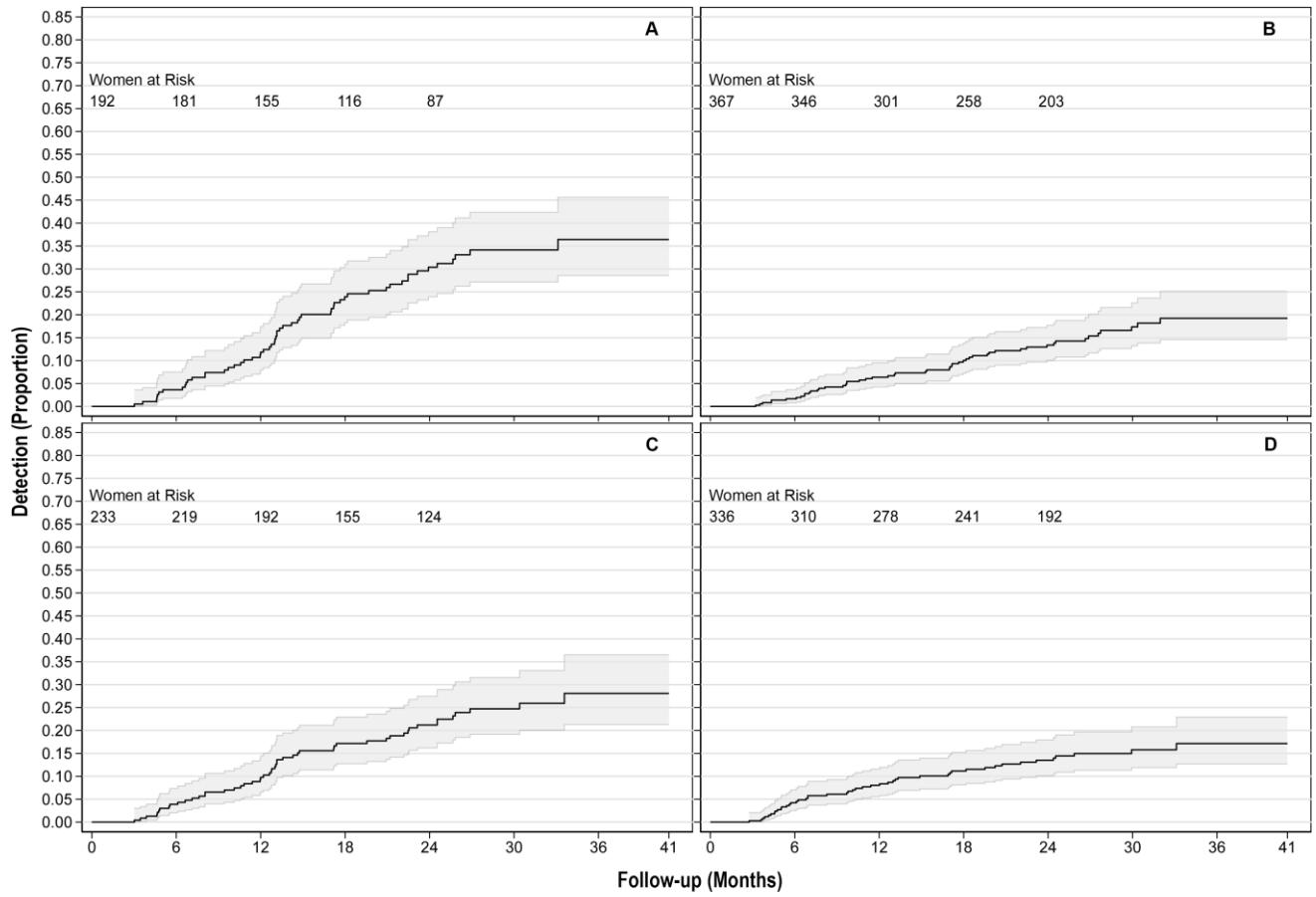
- ↓ : Data are right-censored.
- ⇒ : Time to discrete event of interest. Gradient arrows indicate that biological clearance occurred at an unknown time before the clearance event at the arrowhead. Solid blue arrow counts time at risk contributed before censorship at the arrowhead.



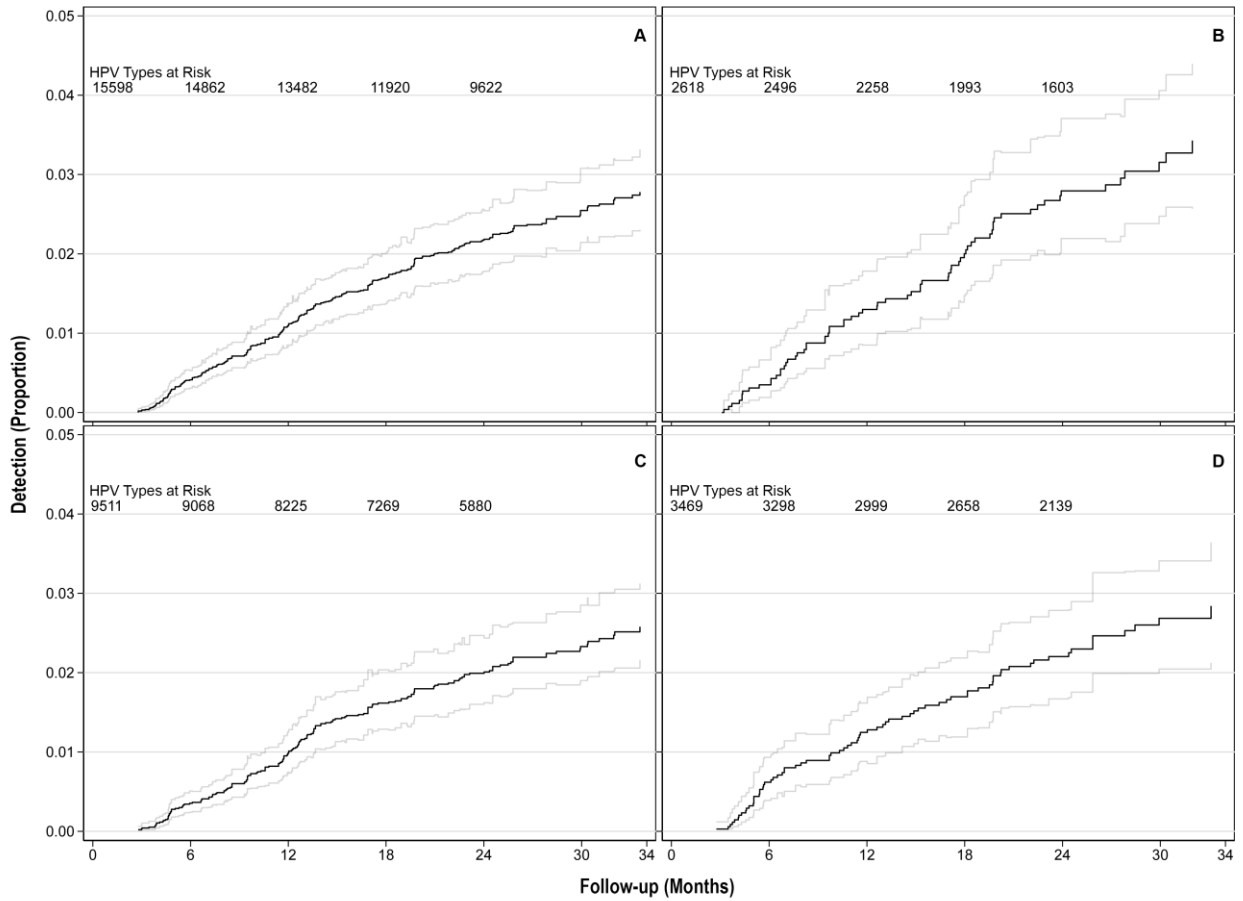
**Figure S2.** Months post-baseline at which women attended follow-up visits. Sample size per visit provided for woman- ( $n_w$ ) and HPV- ( $n_{HPV}$ ) level prevalence analyses. Protocol-designated times for visits 2-6 were 4-, 8-, 12-, 18- and 24-months post-baseline; visit 7 was auxiliary.



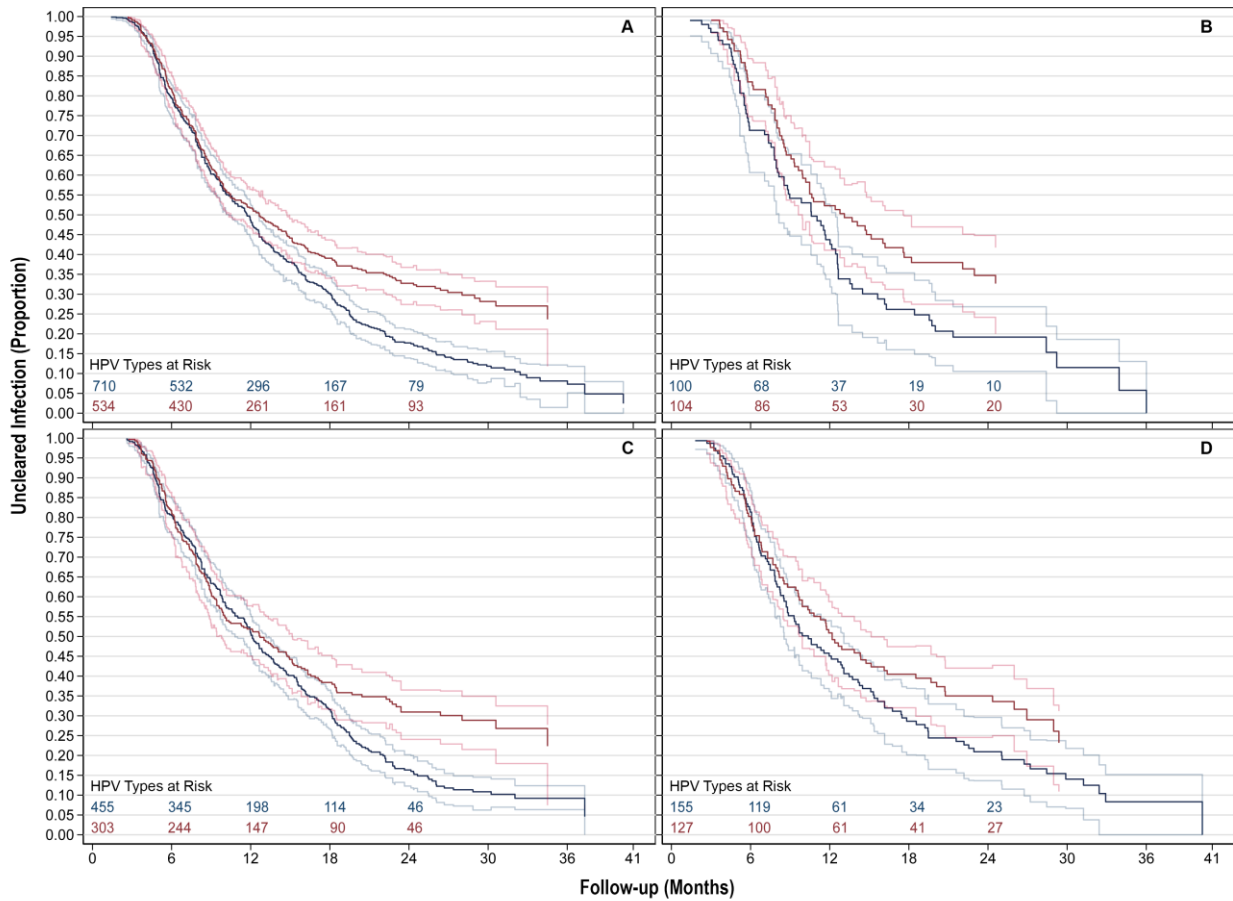
**Figure S3.** Single detection of incident infection with any (A) HPV type, (B) subgenus 1, (C) subgenus 2, and (D) subgenus 3 type, at the HPV-level. Risk tables were extracted from standard Kaplan-Meier plots and appended to the above plots, which incorporate bootstrap-based confidence intervals.



**Figure S4.** Double detection of incident infection with any (A) HPV type(s), (B) subgenus 1, (C) subgenus 2, and (D) subgenus 3 type(s), at the woman-level.

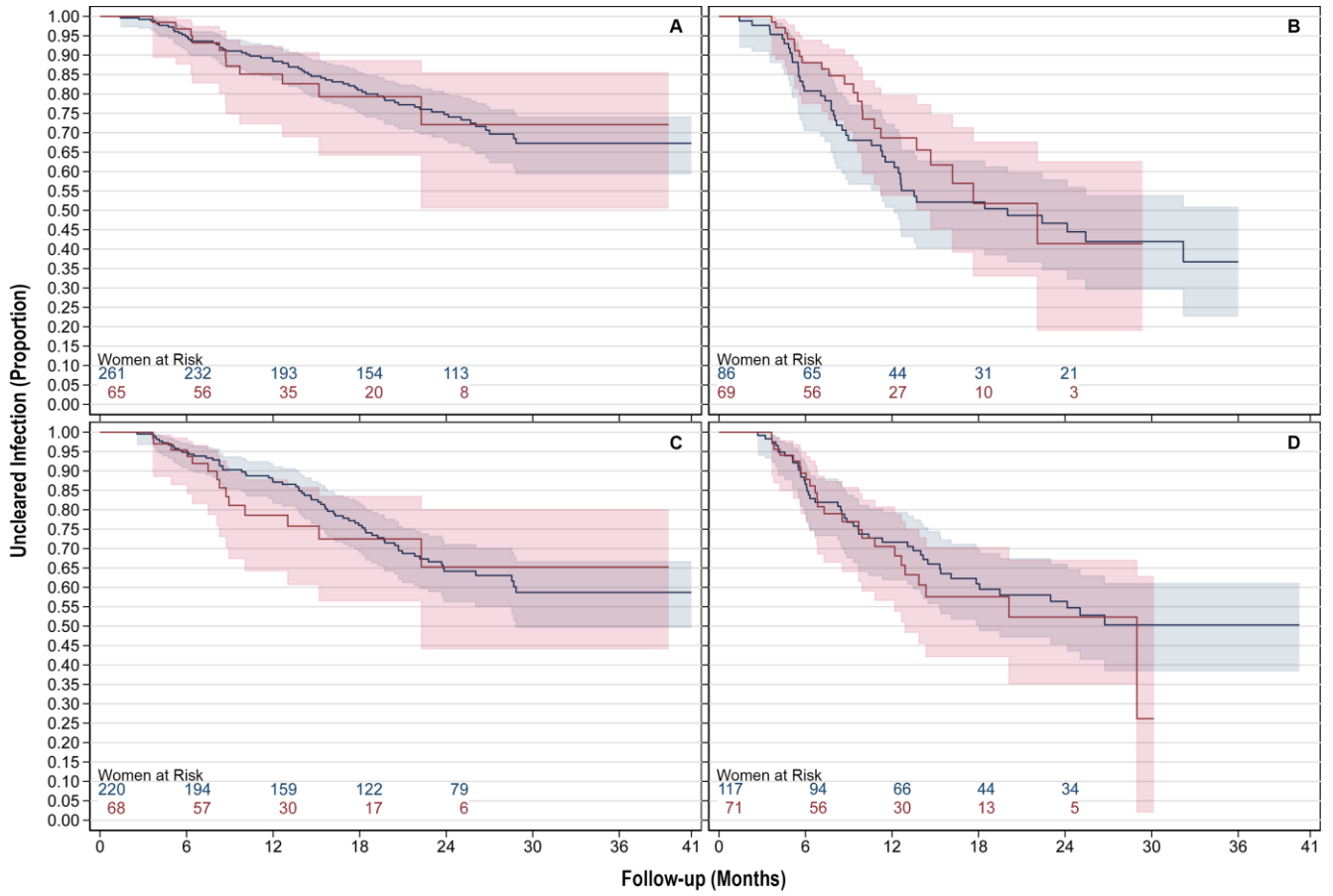


**Figure S5.** Double detection of incident infection with any (A) HPV type, (B) subgenus 1, (C) subgenus 2, and (D) subgenus 3 type, at the HPV-level. Risk tables were extracted from standard Kaplan-Meier plots and appended to the above plots, which incorporate bootstrap-based confidence intervals.

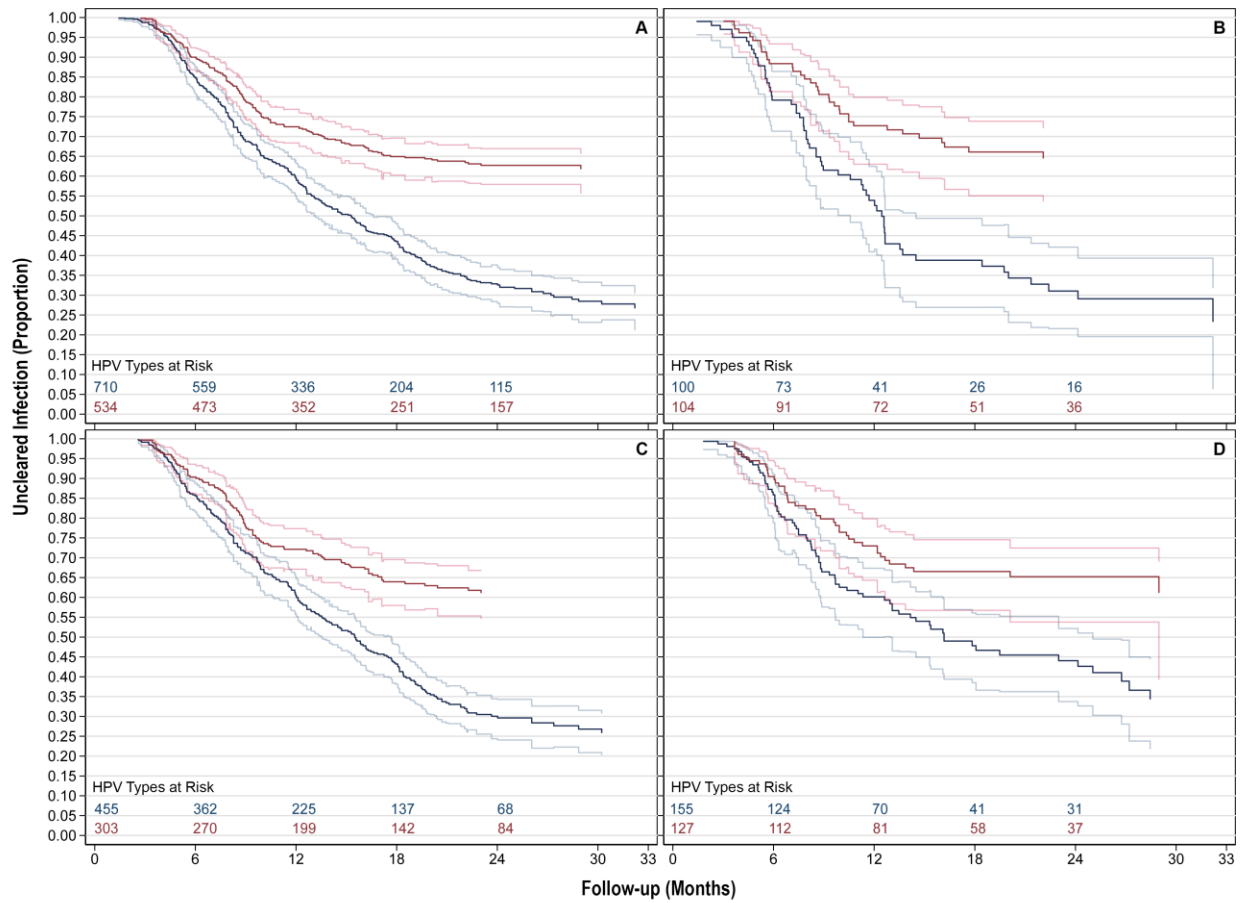


**Figure S6.** Liberal clearance of any (A) HPV type, (B) subgenus 1, (C) subgenus 2, and (D) subgenus 3 type for incident infections (red) and infections present at baseline (blue), at the HPV-level. Risk tables were extracted from standard Kaplan-Meier plots and appended to the above plots, which incorporate bootstrap-based confidence intervals.





**Figure S7.** Conservative clearance of all (A) HPV type(s), (B) subgenus 1, (C) subgenus 2, and (D) subgenus 3 type(s) for infections present at baseline (blue) and incident infections (red), at the woman-level.



**Figure S8.** Conservative clearance of any (A) HPV type, (B) subgenus 1, (C) subgenus 2, and (D) subgenus 3 type for incident infections (red) and infections present at baseline (blue), at the HPV-level. Risk tables were extracted from standard Kaplan-Meier plots and appended to the above plots, which incorporate bootstrap-based confidence intervals.

## **Addenda**

**Addendum S1.** Woman-Level Analyses of Given HPV Types: For each outcome, we performed 36 woman-level analyses of individual HPV types, with one analysis for each HPV type tested. Each analysis of a given HPV type incorporated women's longitudinal positivity statuses for one individual type of HPV.

**Addendum S2.** Woman-Level Analyses of Grouped HPV Types: For each outcome, we performed 4 woman-level analyses of grouped HPV types, with one analysis for each subgenus, and one analysis including all 36 HPV types. These analyses treat each woman's longitudinal HPV status as a composite. A woman was considered HPV-positive when she tested positive for one or more of the HPV types included in the group of interest, and HPV-negative only when she tested negative for *all* those types.

**Addendum S3.** HPV-Level Analyses of Grouped HPV Types: For each outcome, we performed 4 HPV-level analyses of grouped HPV types, with one analysis for each subgenus, and one analysis including all 36 HPV types. These analyses handle women's longitudinal HPV statuses for each unique HPV type in the group of interest separately. In so doing, HPV-level analyses can account for a woman's simultaneous positivity and negativity for multiple different HPV types.