

# Supplementary Materials: Pharmacometric assessment of primaquine induced haemolysis in glucose-6-phosphate dehydrogenase deficiency

Pukrittayakamee S, *et al.*

February 24, 2023

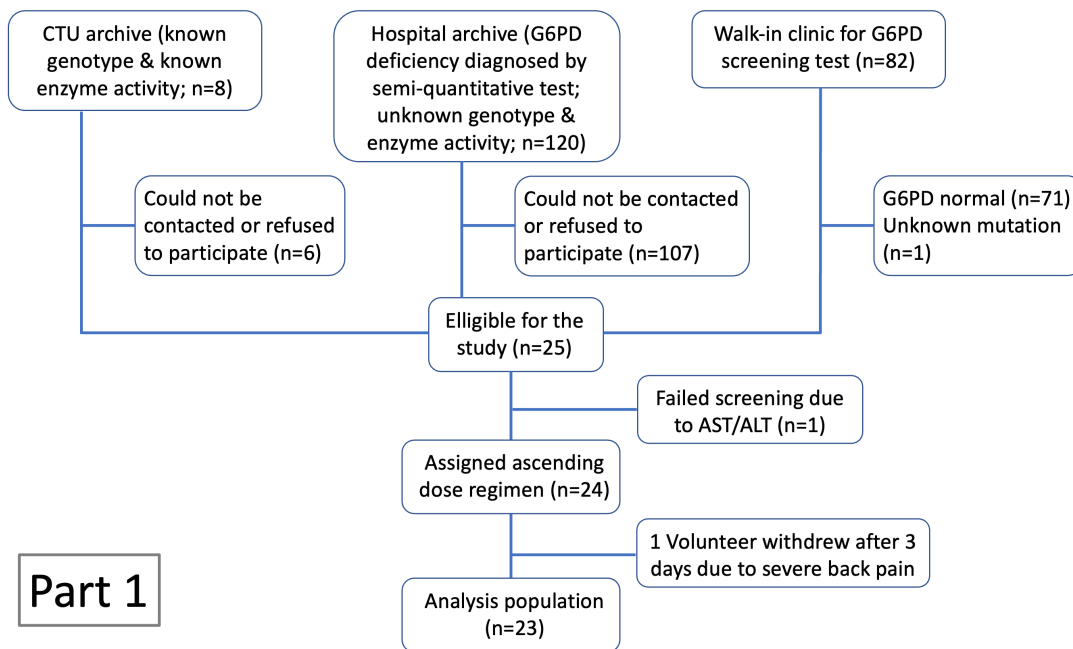
## S1 Exclusion criteria

Exclusion criteria were any one of the following:

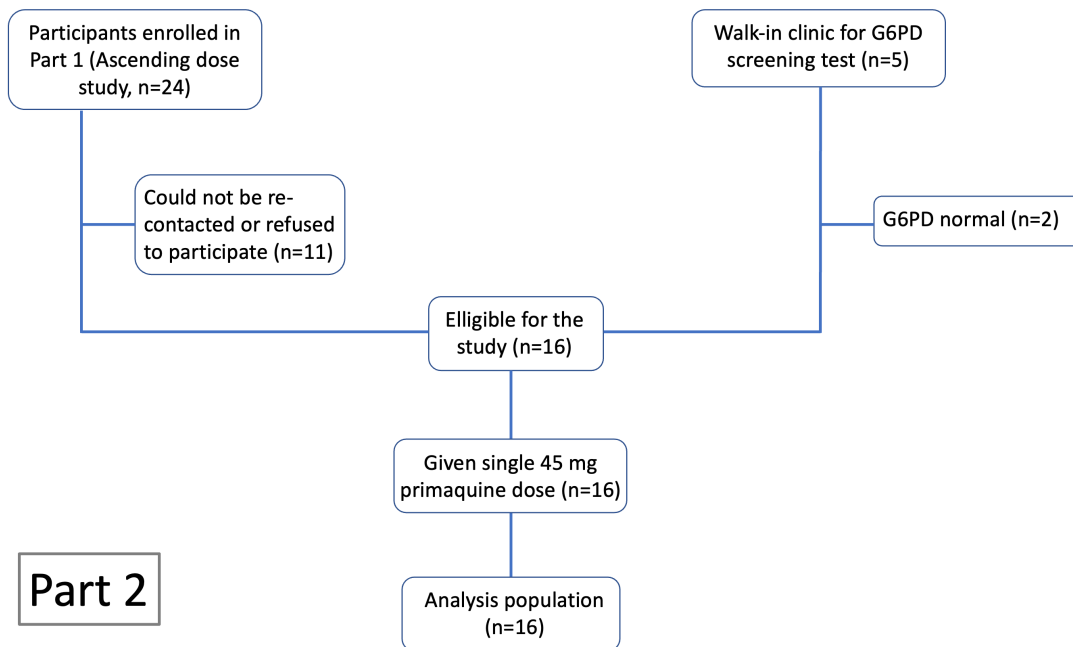
1. body mass index  $\geq 35$ ;
2. G6PD<sup>Med</sup> variant (563C $\rightarrow$ T);
3. known to have, or discovered by the investigator to have any clinically significant disease;
4. malaria or other febrile illness (e.g. viral hepatitis, typhoid fever) in the previous month;
5. a positive blood film for malaria (asexual or sexual parasites);
6. history of haemolysis unrelated to primaquine in the past 8 weeks;
7. blood group Rhesus negative (rare in Thai population and so these subjects were excluded to avoid delays in finding matched blood if needed for transfusion);
8. received a blood transfusion in the past 3 month;
9. blood donation  $\geq 300$  mL of whole blood previous 3 months;
10. taking or taken within the past 3 weeks any herbal medicine or any drug or foodstuff known to cause haemolysis in G6PD deficiency.
11. AST or ALT or LDH  $>1.5$  times the upper limit of normal (ULN);

12. serum creatinine >ULN (1.2 mg/dL) and an eGFR <70 mL/min/1.73m<sup>2</sup> (Chronic Kidney Disease Epidemiology Collaboration (CKD-EPI) equation [Levey2009]);
13. dipstick urine analysis showing microscopic haematuria ( $\geq 5$  RBCs) microscopic and/or microscopic proteinuria;
14. conjugated or unconjugated bilirubin >1.5 ULN;
15. methaemoglobin level >5% determined by oximetry (Masimo Rad 57®);
16. allergy to primaquine;
17. having taken part in research involving an investigational drug within the past 8 weeks;
18. potential non-compliance with the protocol by the volunteer (investigator opinion).

## **S2 CONSORT diagrams**

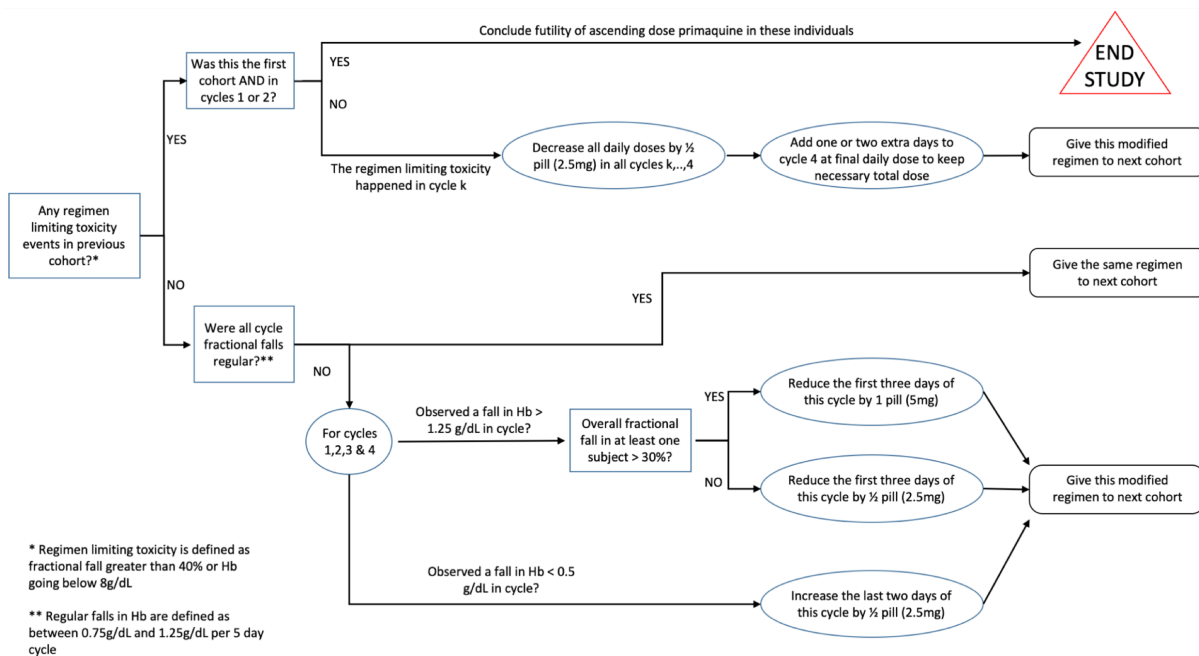


**Figure S1:** CONSORT diagram for Part 1 of the study.

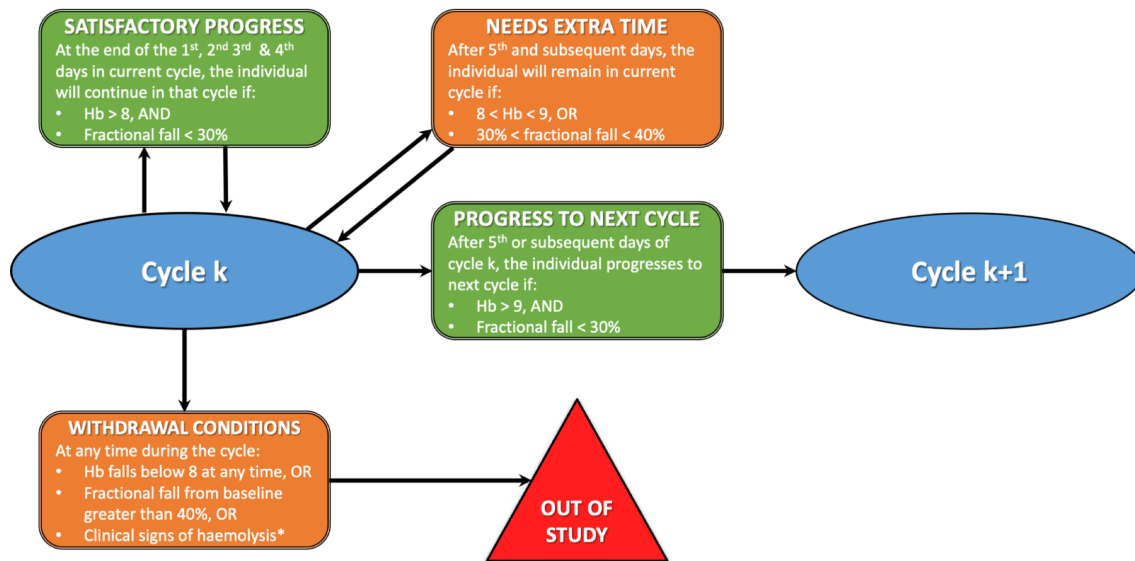


**Figure S2:** CONSORT diagram for Part 2 of the study.

### S3 Adaptive rules



**Figure S3:** Rules for determining the primaquine regimen in the next cohort of 5 subjects. These pre-specified rules were for guidance only and were not binding as participant safety was the primary concern.



\*clinical jaundice, Hillmen score >5, evidence of acute renal injury (>2x increase in serum creatinine from baseline)

**Figure S4:** Rules for increasing primaquine dose for each subject. Each cycle was between 3 and 5 days, and doses were increased across the successive cycles. Each subject progressed to the next cycle (i.e. higher dose) only if they had a haemoglobin >70% of their baseline value (i.e. less than 30% relative decrease). Primaquine was stopped if the haemoglobin went under 40% of the baseline value.

## Study endpoints

This trial was designed to characterise the dose-response relationship for primaquine induced haemolysis in healthy adult males with G6PD deficiency. The therapeutic aim was to develop a primaquine radical cure regimen that was safer in G6PD deficiency and shorter than the currently recommended once weekly 0.75 mg base/kg regimen given for 8 weeks. There was no formal hypothesis testing. The statistical analysis plan specified multiple endpoints which summarise the overall safety of the ascending primaquine doses and allow comparison with the single dose study (in particular the haemolytic effects of each).

### Primary outcomes

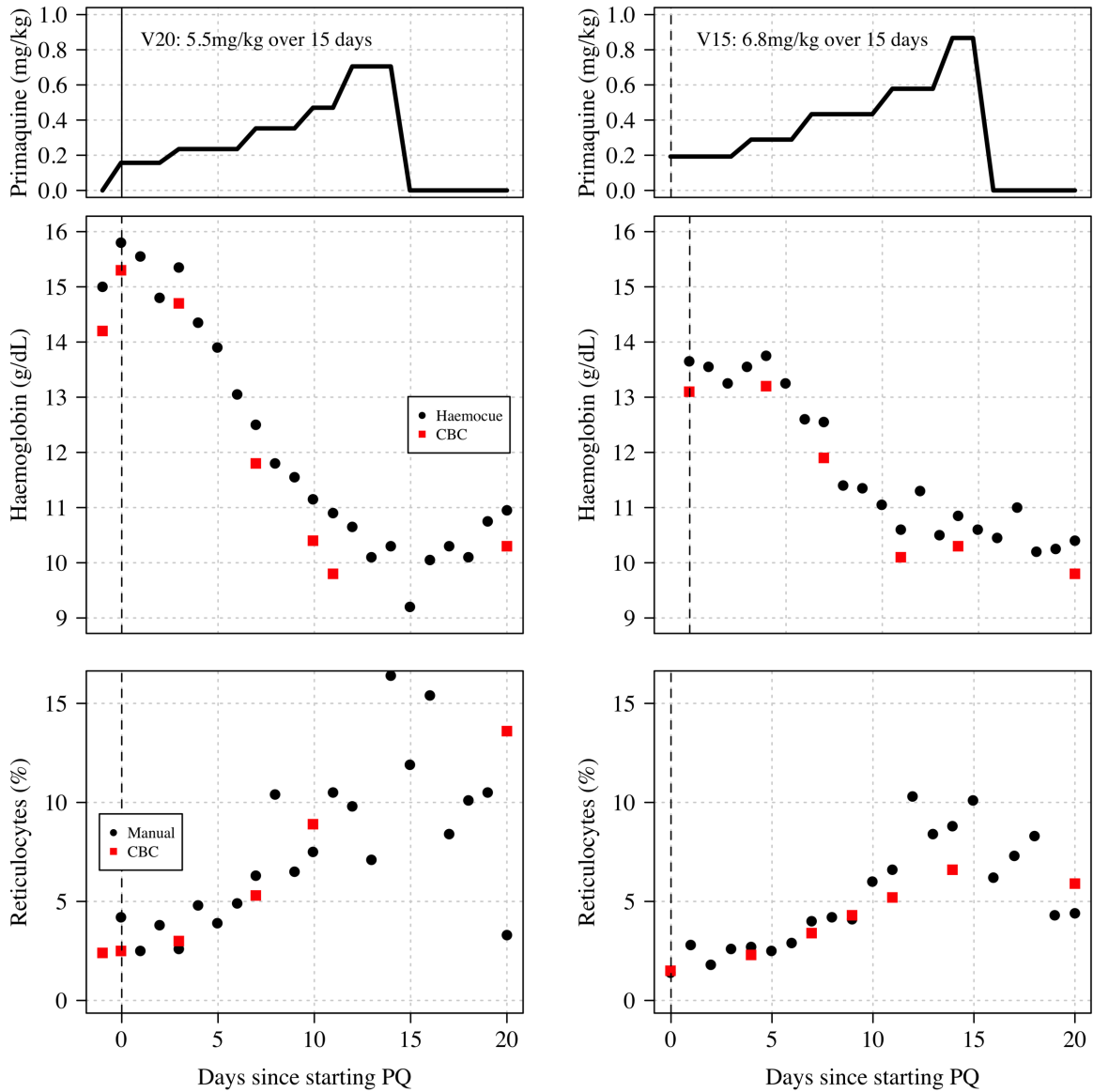
1. Maximum absolute fall in haemoglobin between day 0 and day 28 (absolute difference with respect to baseline haemoglobin);
2. Maximum relative fall in haemoglobin between day 0 and day 28 (relative change (%) with respect to baseline haemoglobin);
3. Maximum increase in total bilirubin between day 0 and day 28 (absolute difference with respect to baseline total bilirubin);
4. Maximum increase in lactate dehydrogenase (LDH) between day 0 and day 28 (absolute difference with respect to baseline LDH);
5. Mean decrease in haemoglobin per day (g/day) between days 5 and day 10 (Part 1 only: estimated from a linear model fit to daily haemoglobin measurements);
6. Mean decrease in haemoglobin per day (g/day) between days 1 and day 7 (Part 2 only: estimated from a linear model fit to daily haemoglobin measurements).

### Secondary outcomes

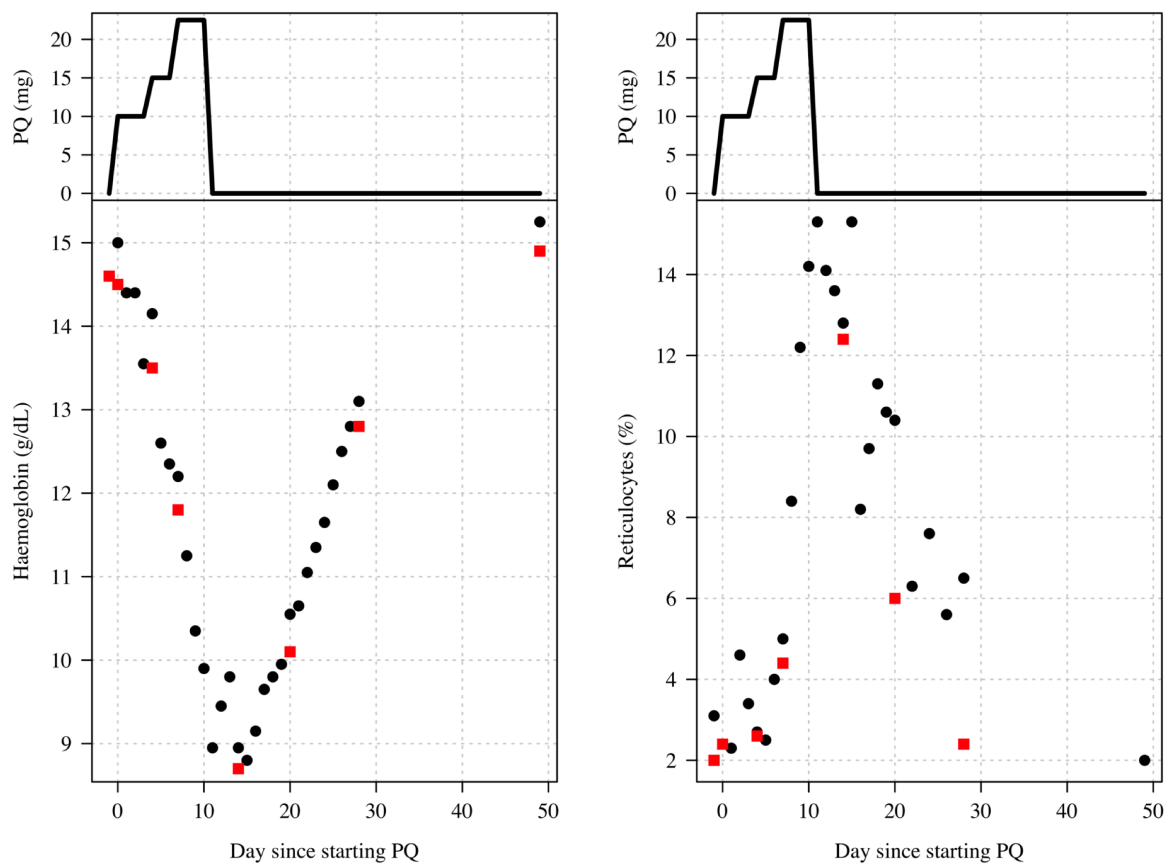
1. Maximum fold-change relative to baseline for serum AST, ALT and creatinine;
2. Maximum absolute change in serum haptoglobin;
3. Peak reticulocyte count;
4. Peak blood methaemoglobin percentage;
5. Clinically significant changes in the differential white blood cell count.

## S4 Supplementary Results

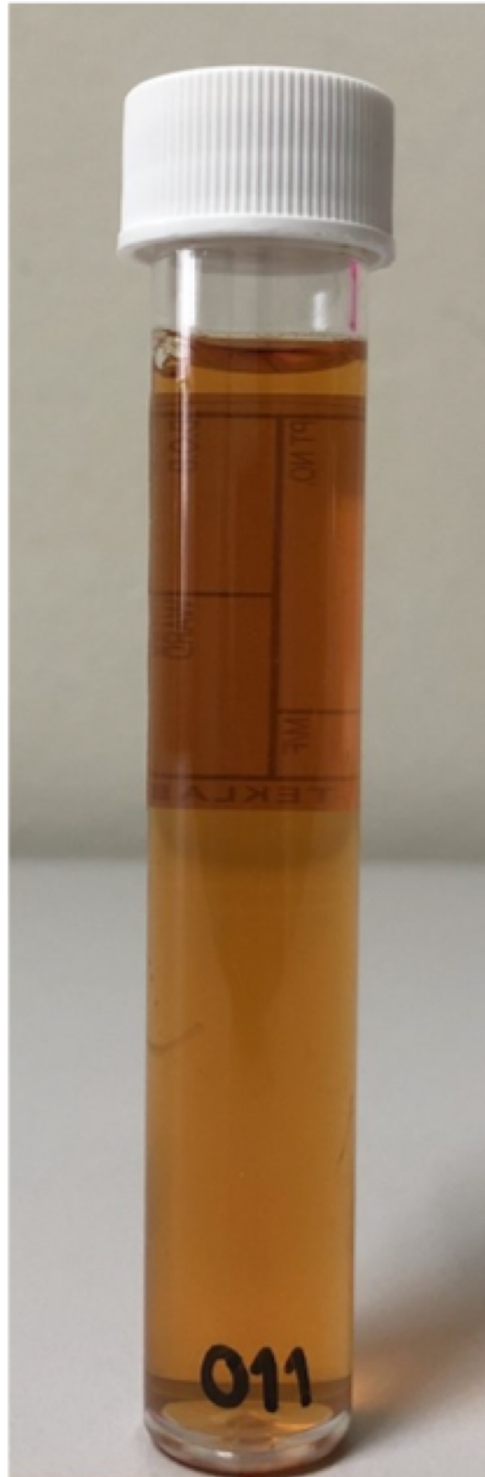




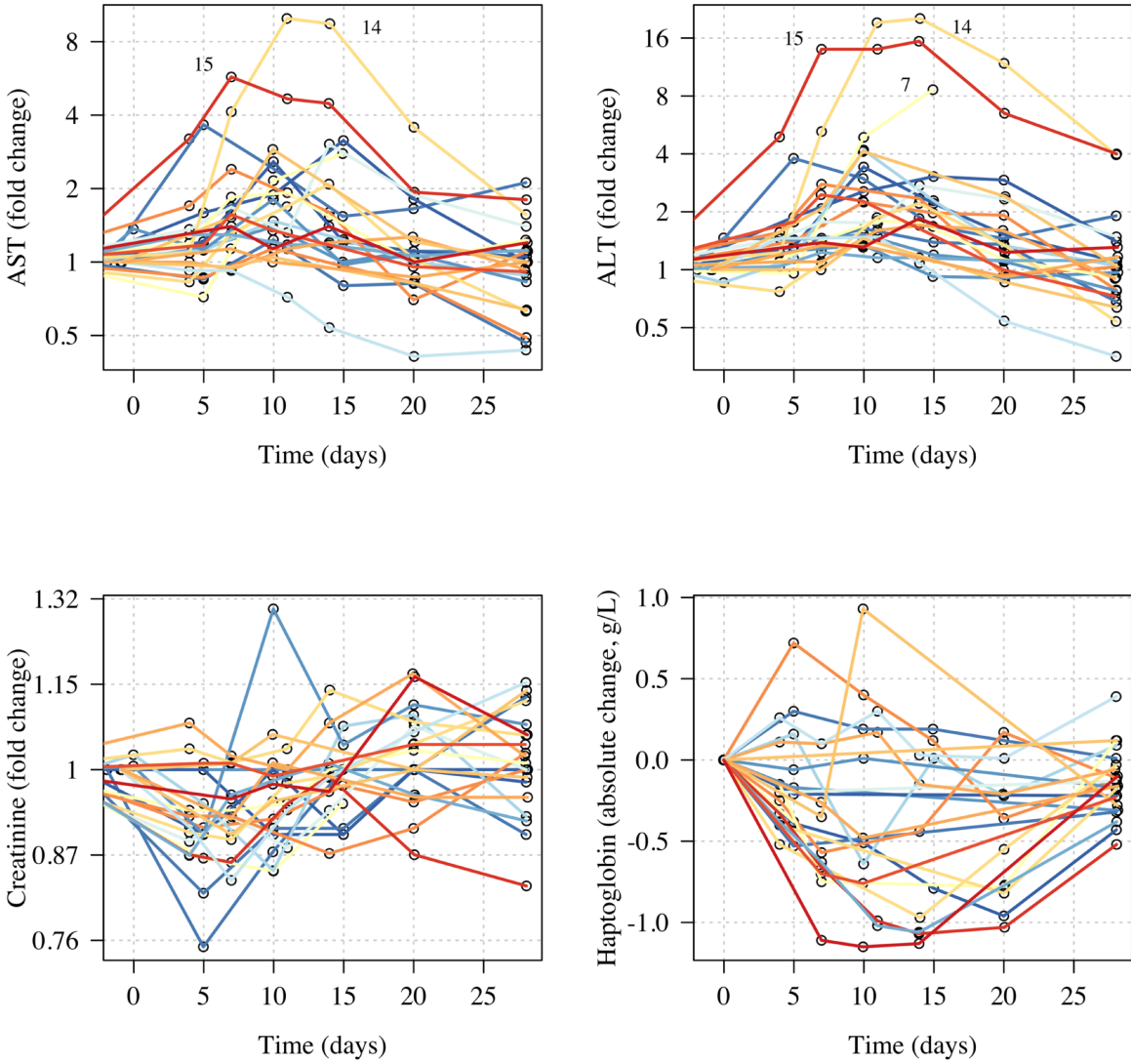
**Figure S5:** Haemoglobin and reticulocyte data from two subjects (left: V15; right: V20) who both had the Viangchan variant (871G>A). Both received very similar ascending dose regimens which are shown in the top panels (mg/kg primaquine daily dose); the middle panels show the observed haemoglobin measurements; the bottom panels show the reticulocyte counts. Black circles: haemocue and manual reticulocyte counts; red squares: CBC haemoglobin and reticulocyte counts.



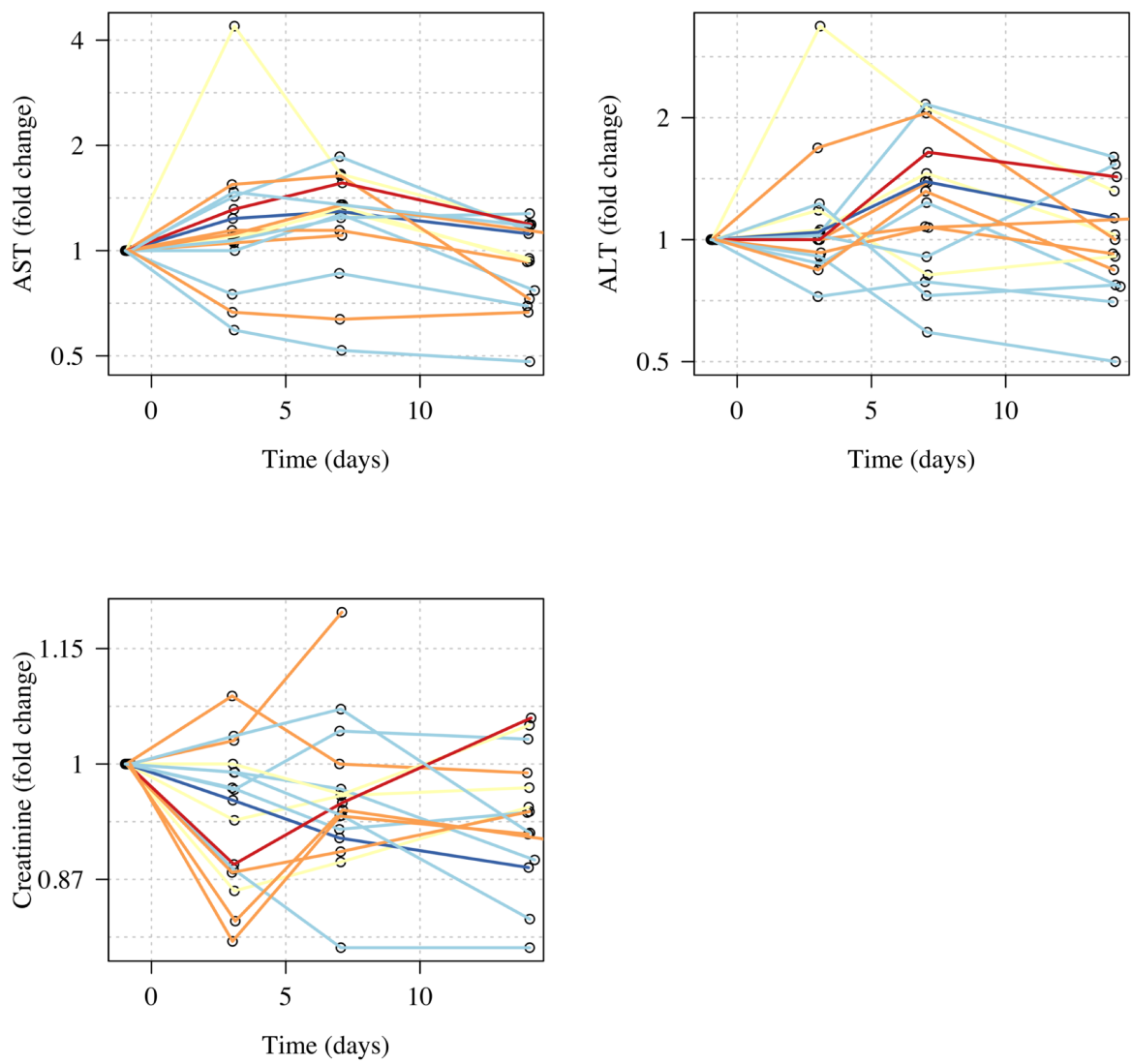
**Figure S6:** Haemoglobin and reticulocyte data from subject 11 who was stopped due to meeting the study withdrawal stopping rule. The top panels show the dose of primaquine given each day; the bottom panels show the observed haemoglobin measurements (left) and reticulocyte counts (right). Black circles: haemocue and manual reticulocyte counts; red squares: CBC haemoglobin and reticulocyte counts.



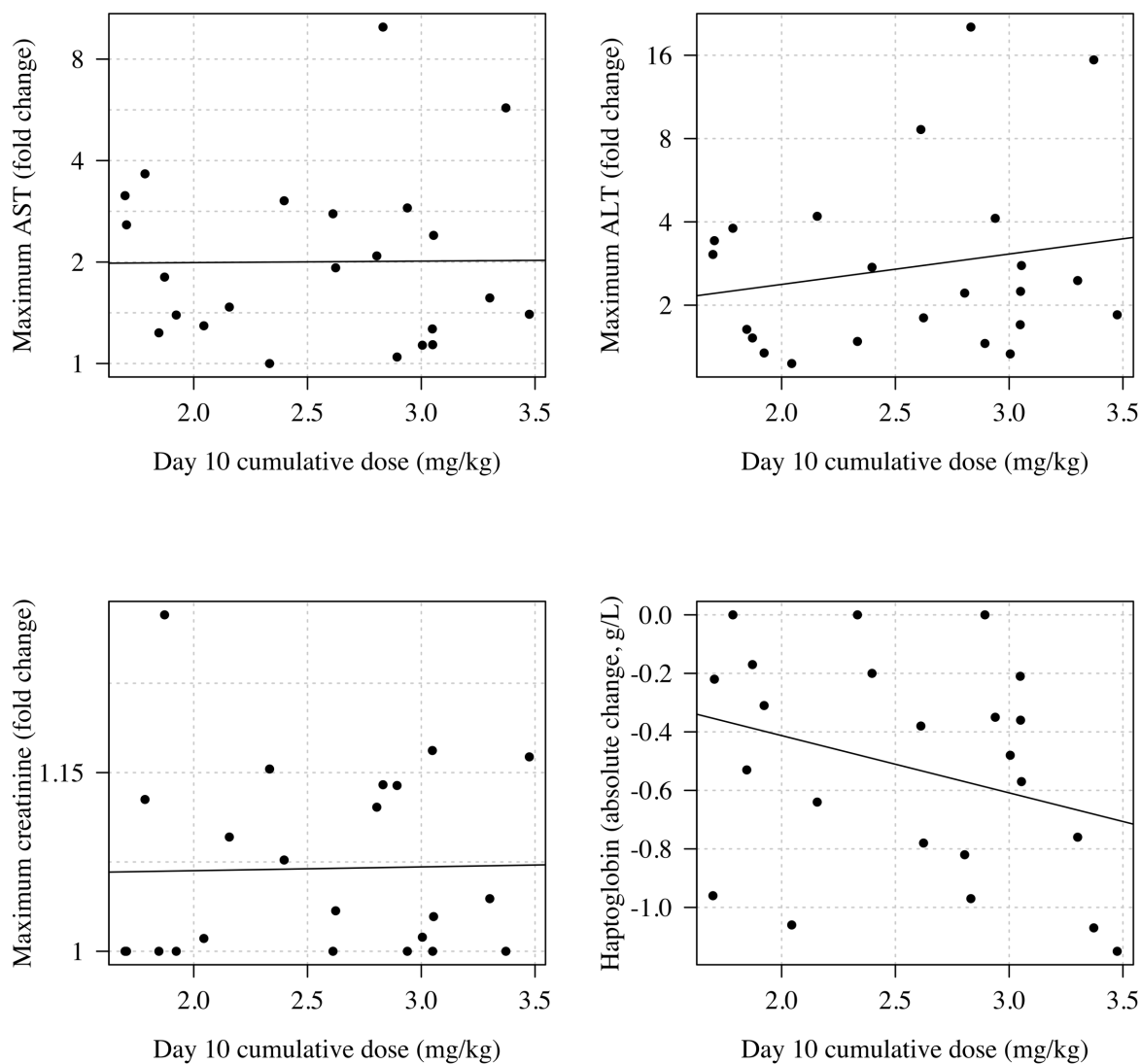
**Figure S7:** Day 12 urine sample from subject 11 showing slight haemoglobinuria.



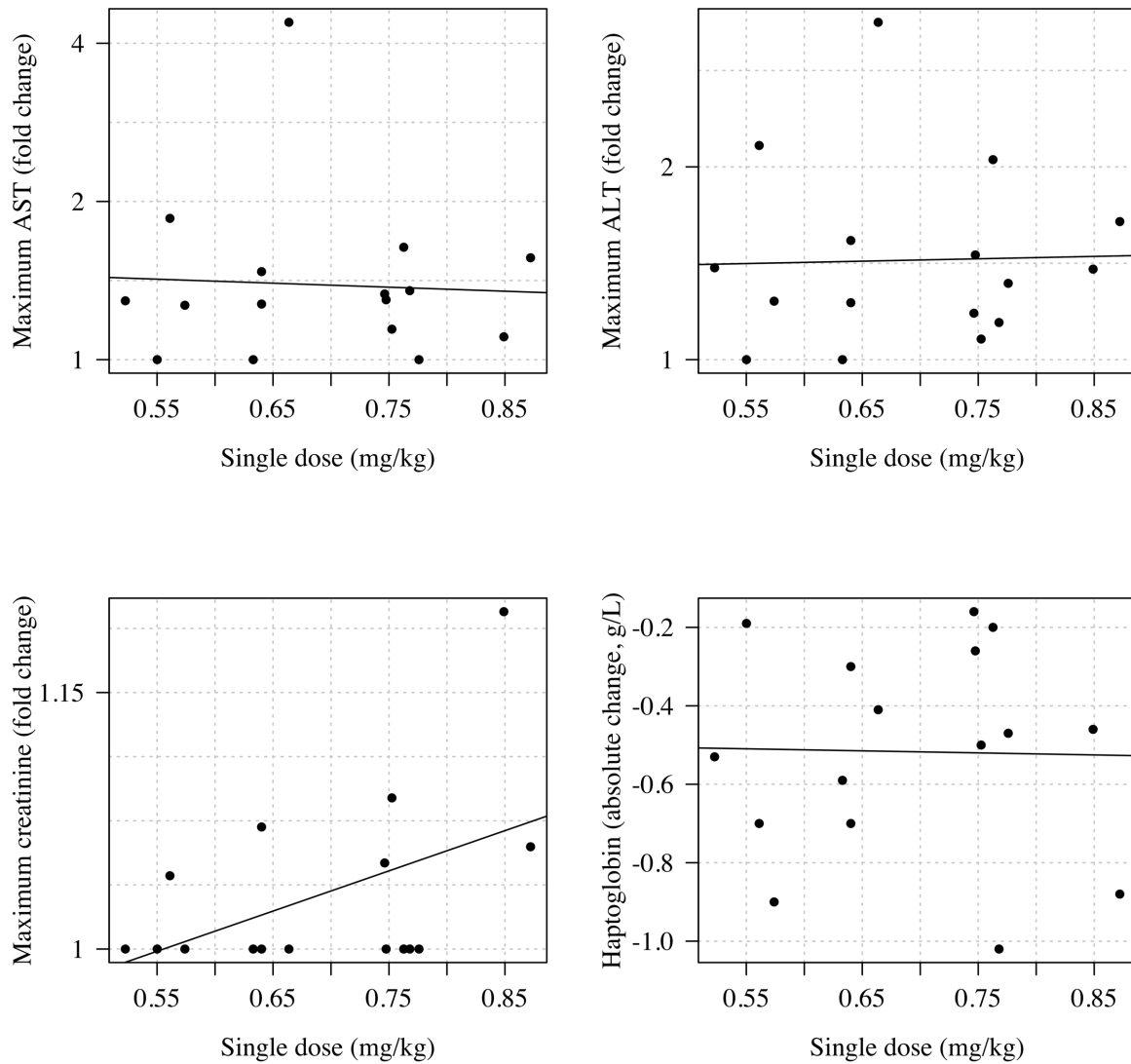
**Figure S8:** Normalised changes in the plasma concentrations of transaminases, haptoglobin, and creatinine during the ascending dose regimen. Colors correspond to the day 10 cumulative dose (as in Figure 1 in main text).



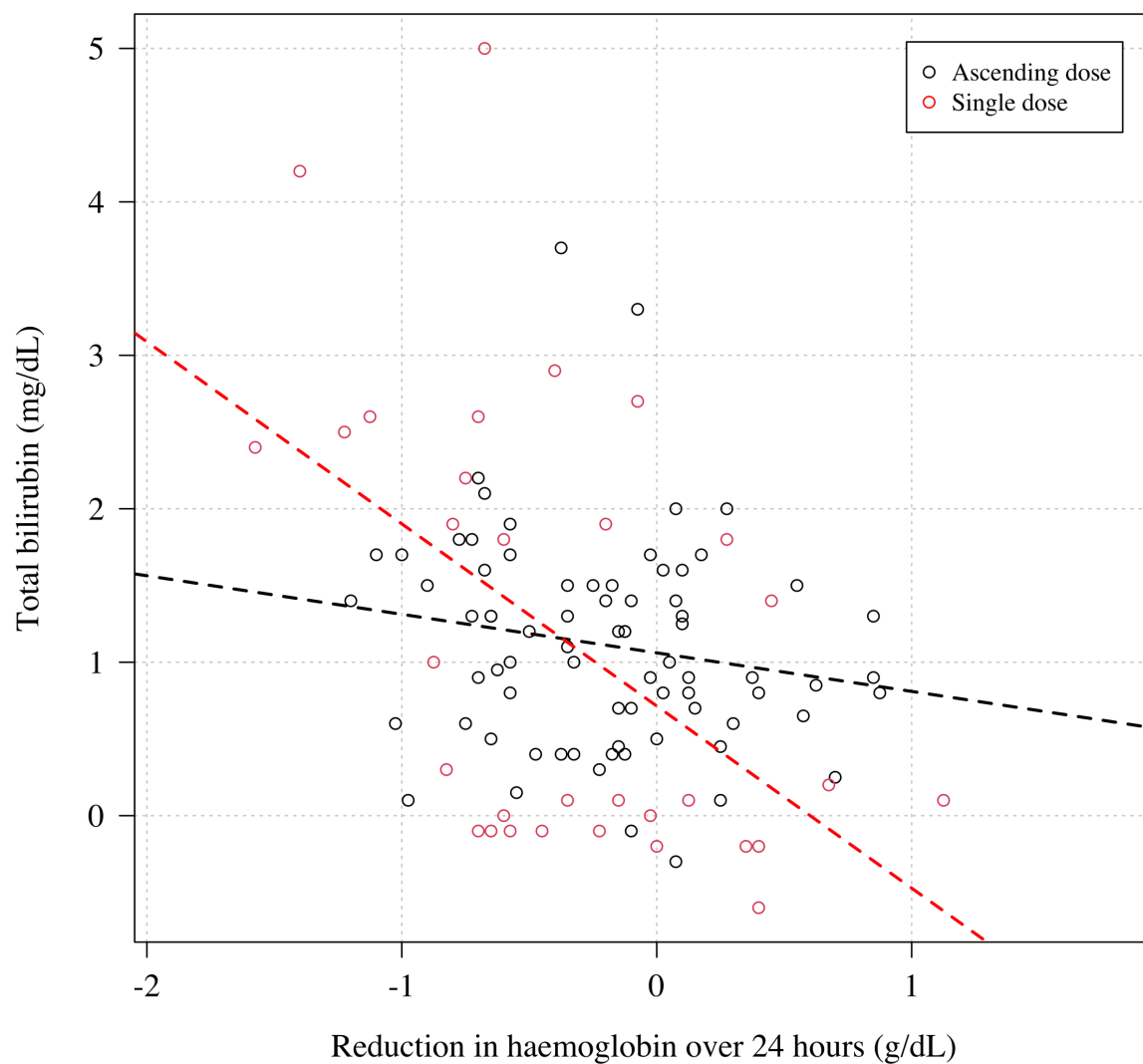
**Figure S9:** Normalised changes in the plasma concentrations of transaminases, haptoglobin, and creatinine during the single dose primaquine 45 mg study.



**Figure S10:** Relationship between the total cumulative dose of primaquine received by day 10 in the 23 volunteers who took ascending primaquine dose regimens and the maximum fold change increases in AST, ALT and creatinine and the maximum absolute decrease in haptoglobin.



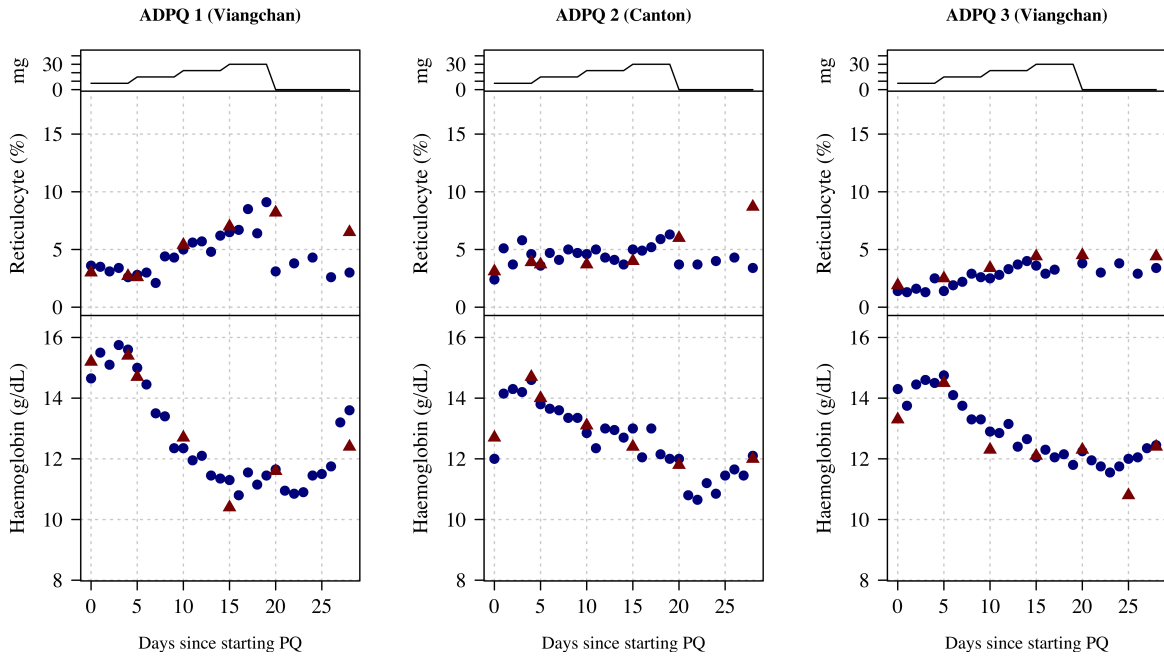
**Figure S11:** Relationship between the mg/kg single dose of primaquine received by the 16 volunteers and the maximum fold change increases in AST, ALT and creatinine and the maximum absolute decrease in haptoglobin.



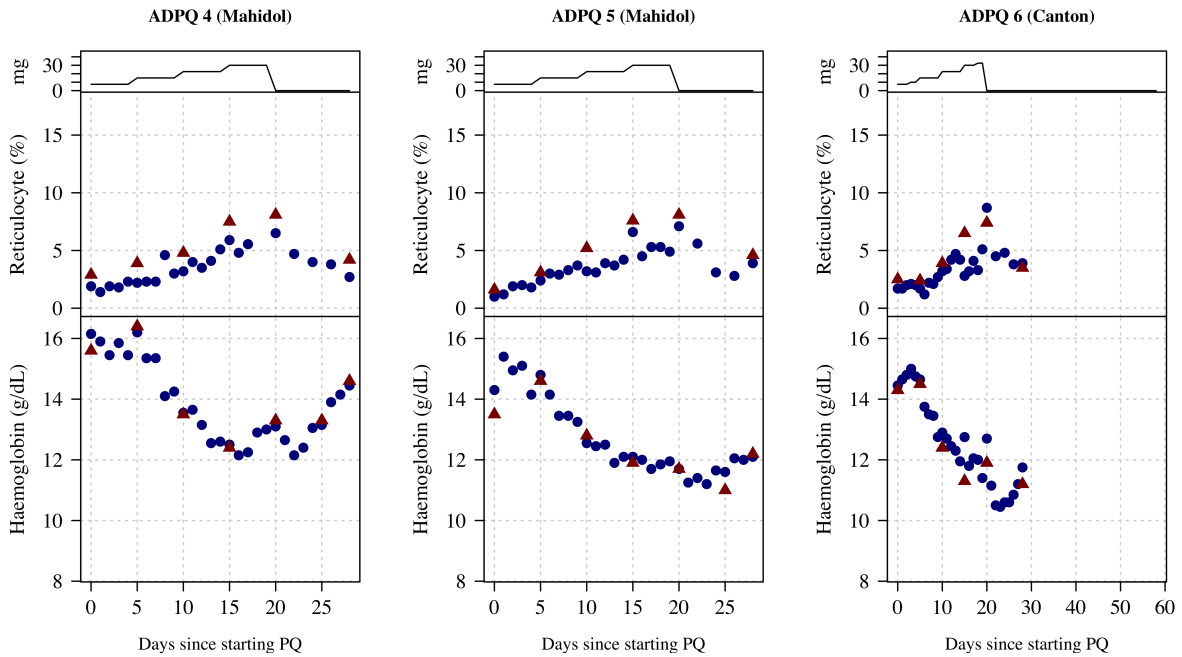
**Figure S12:** The relationship the reduction in haemoglobin from the previous day and the normalised absolute increase in total bilirubin. Black: Part 1; red: Part 2. Each subject has two datapoints corresponding to when the total bilirubin was measured (days 5 and 10 for Part 1; days 3 and 7 for Part 2). The relationship is significant for Part 2 ( $p=0.003$ ), not significant for Part 1 ( $p=0.2$ ).



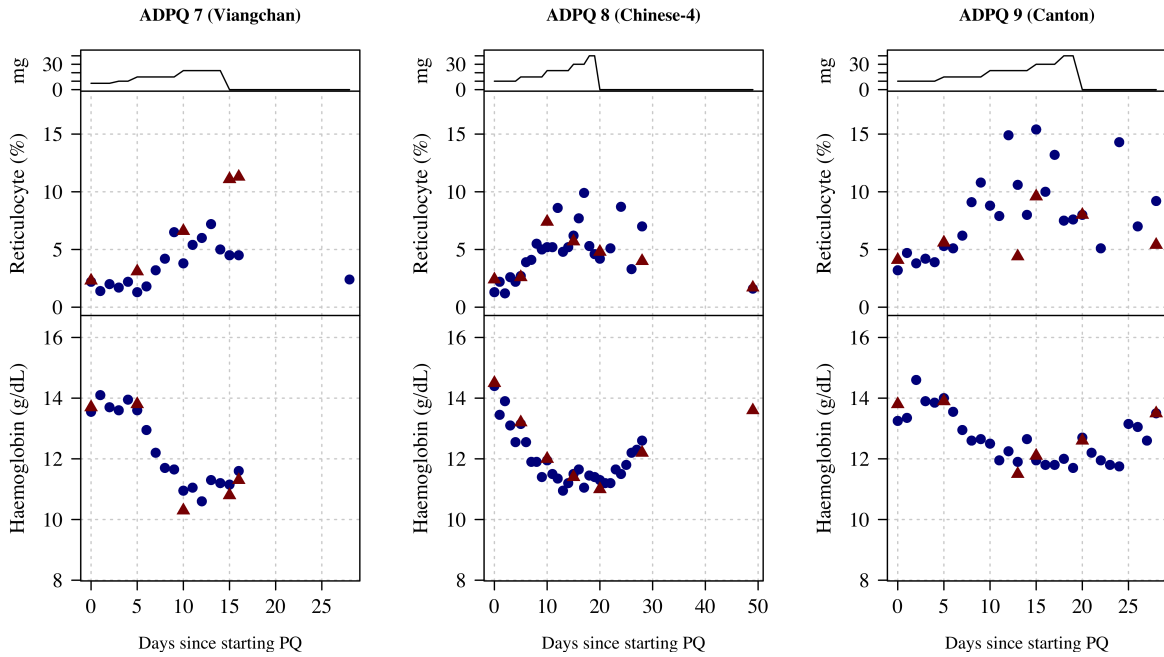
## S5 Part 1: Individual patient data



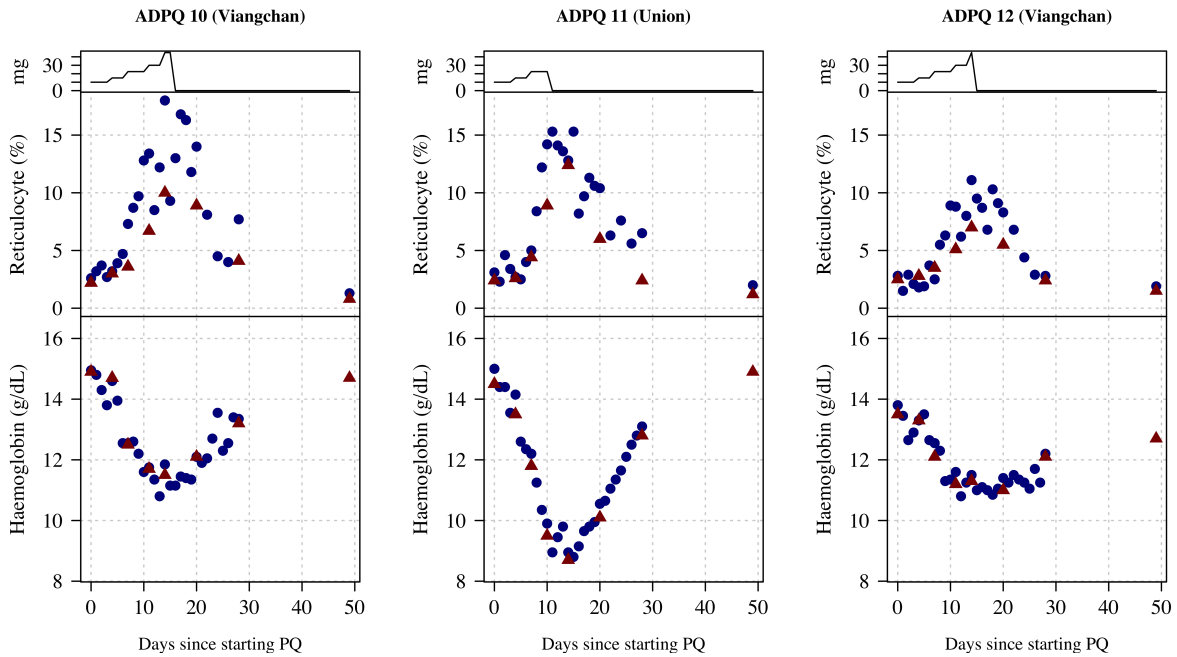
**Figure S13:** Ascending dose: haemoglobin and reticulocyte data over time for volunteers 1-3. Blue shows the manual reticulocyte readings and haemoglobin value; red shows the CBC values.



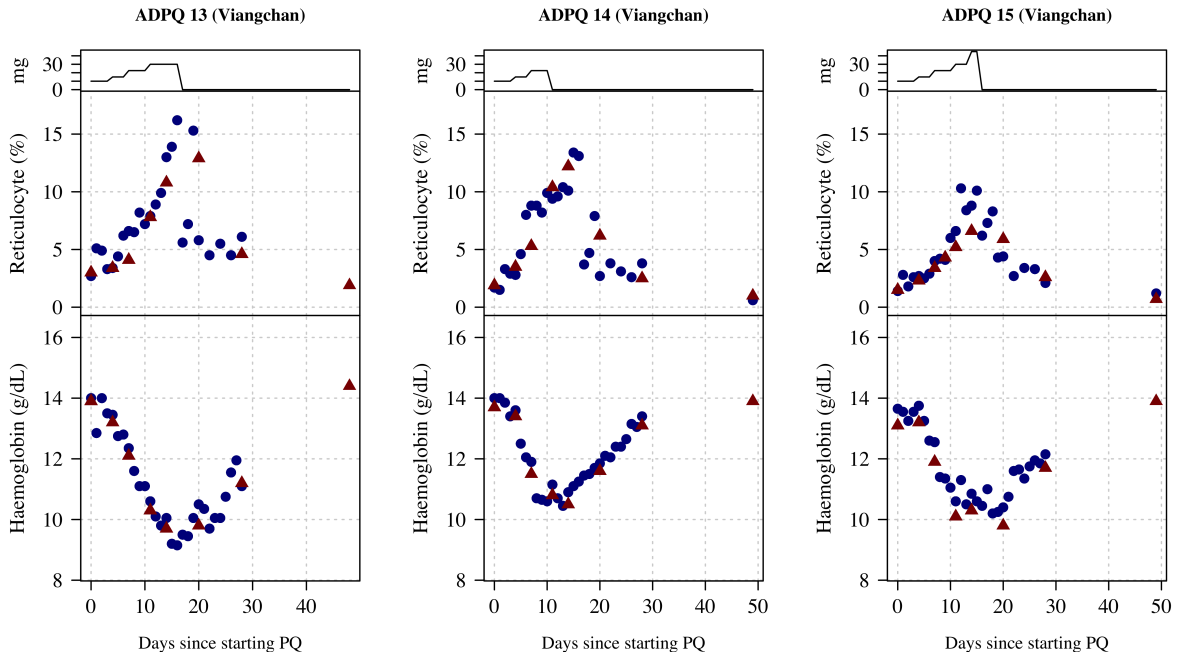
**Figure S14:** Ascending dose: haemoglobin and reticulocyte data over time for volunteers 4-6. Blue shows the manual reticulocyte readings and haemoglobin value; red shows the CBC values.



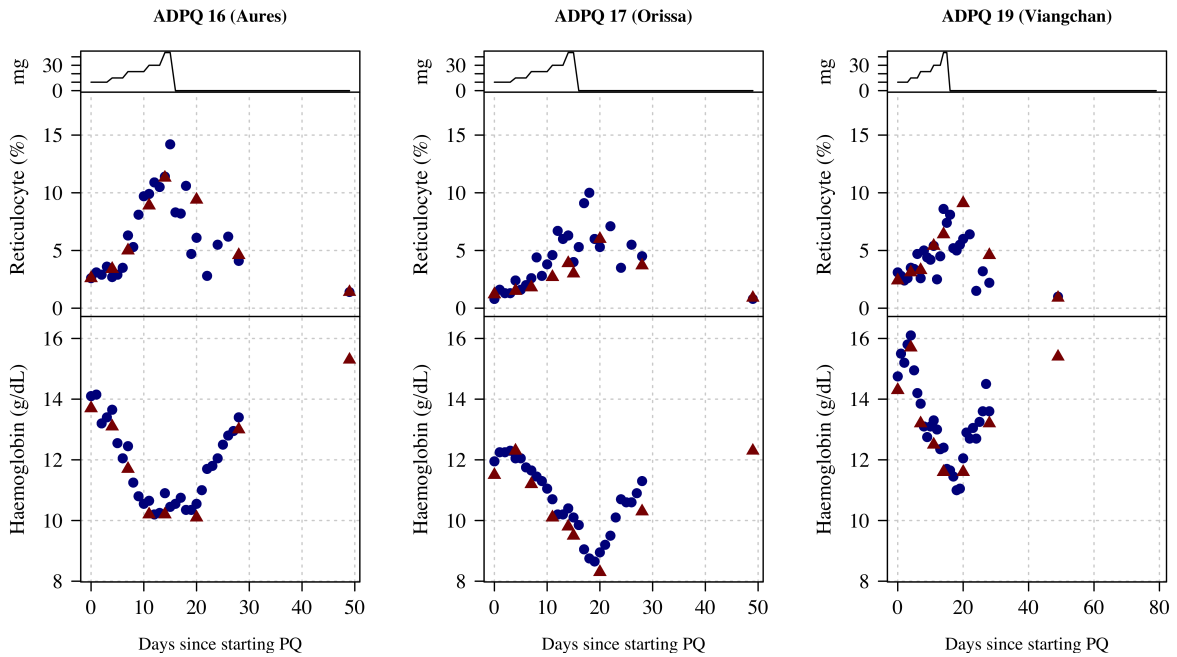
**Figure S15:** Ascending dose: haemoglobin and reticulocyte data over time for volunteers 7-9. Blue shows the manual reticulocyte readings and haemocue value; red shows the CBC values.



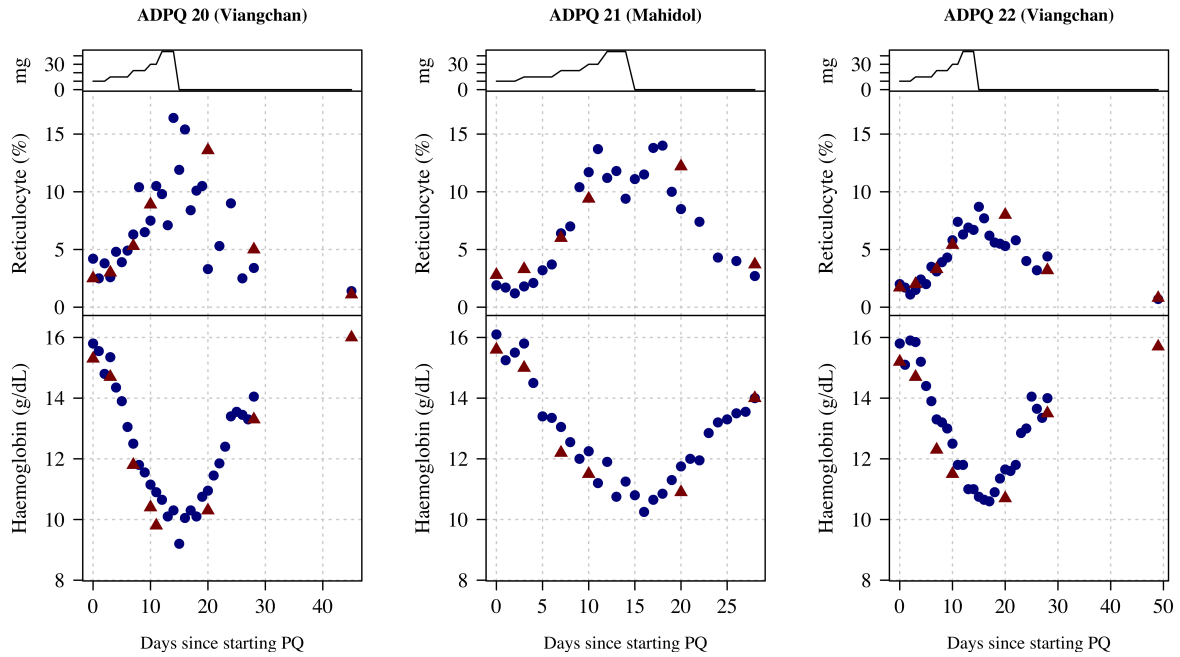
**Figure S16:** Ascending dose: haemoglobin and reticulocyte data over time for volunteers 10-12. Blue shows the manual reticulocyte readings and haemocue value; red shows the CBC values.



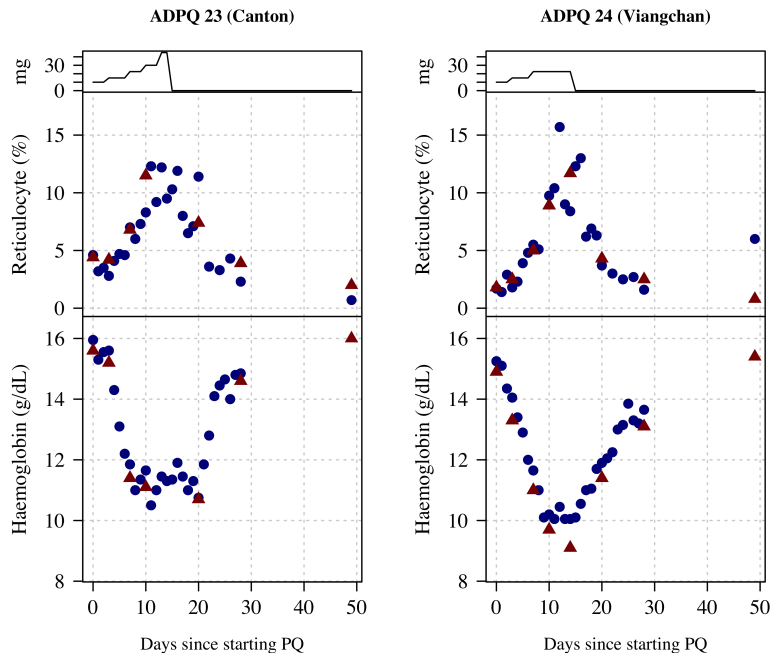
**Figure S17:** Ascending dose: haemoglobin and reticulocyte data over time for volunteers 13-15. Blue shows the manual reticulocyte readings and haemocue value; red shows the CBC values.



**Figure S18:** Ascending dose: haemoglobin and reticulocyte data over time for volunteers 16-17, 19. Blue shows the manual reticulocyte readings and haemocue value; red shows the CBC values.

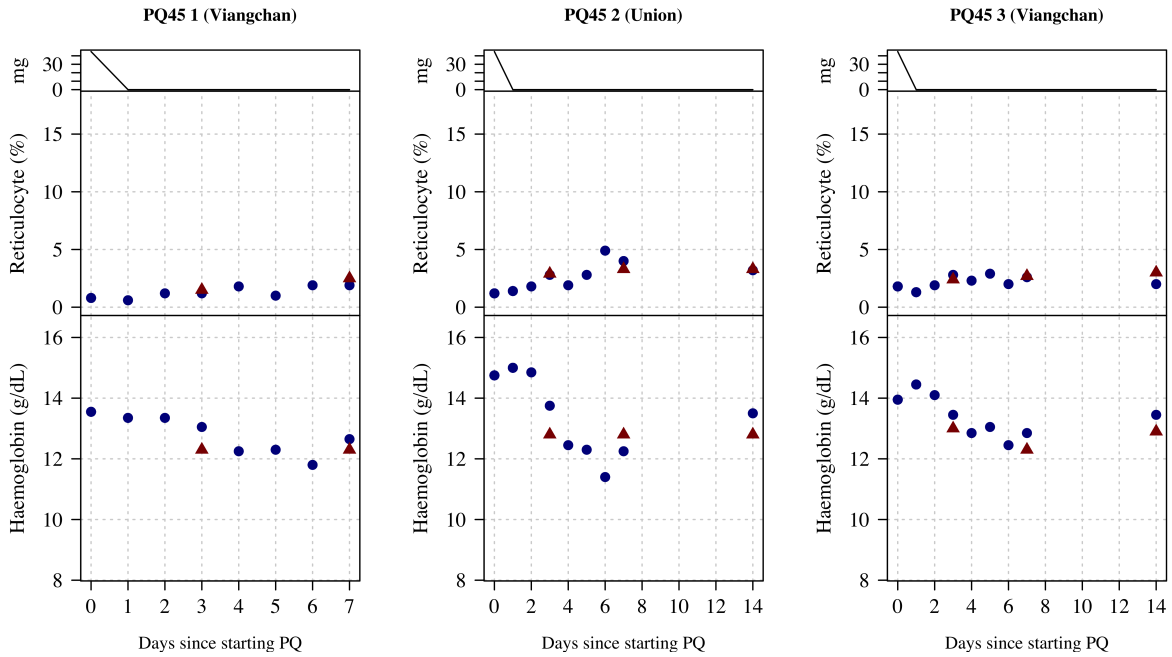


**Figure S19:** Ascending dose: haemoglobin and reticulocyte data over time for volunteers 20-22. Blue shows the manual reticulocyte readings and haemocue value; red shows the CBC values.

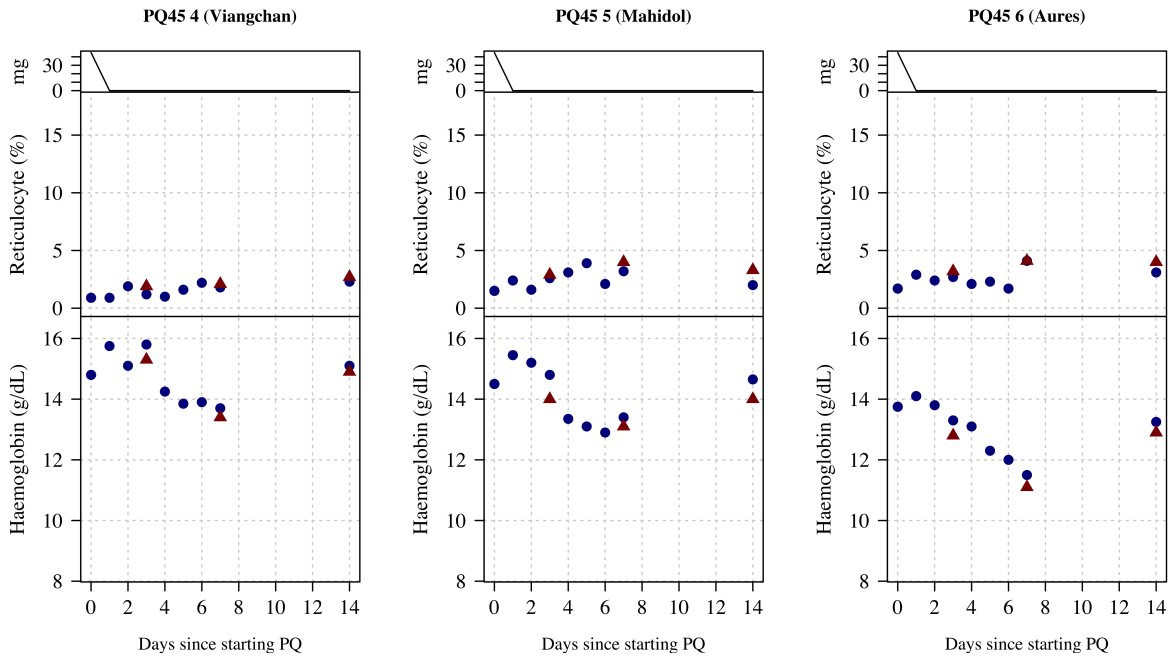


**Figure S20:** Ascending dose: haemoglobin and reticulocyte data over time for volunteers 23 and 24. Blue shows the manual reticulocyte readings and haemocue value; red shows the CBC values.

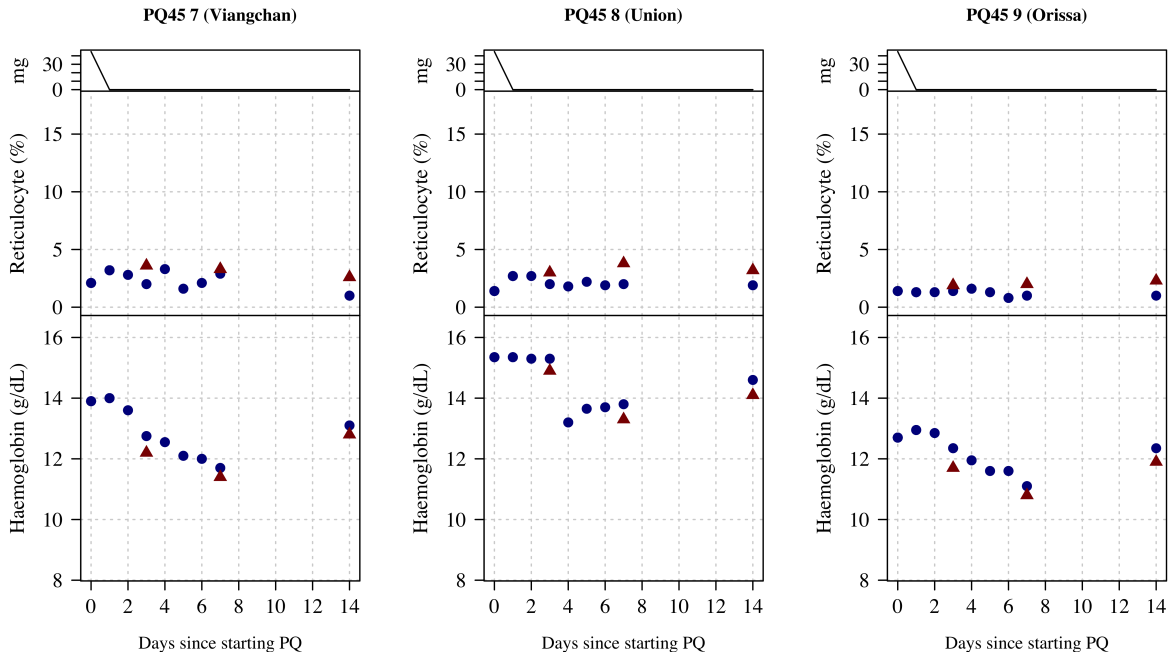
## S6 Part 2: Individual patient data



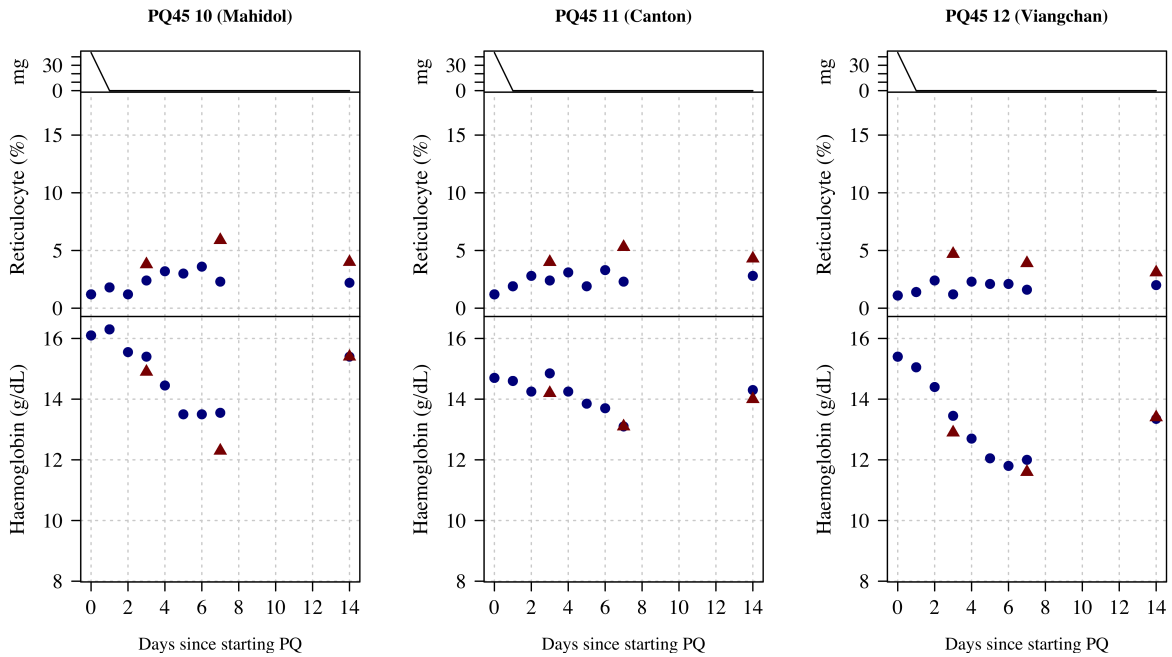
**Figure S21:** Ascending dose: haemoglobin and reticulocyte data over time for volunteer 1 to 3. Blue shows the manual reticulocyte readings and haemocue value; red shows the CBC values.



**Figure S22:** Ascending dose: haemoglobin and reticulocyte data over time for volunteer 4 to 6. Blue shows the manual reticulocyte readings and haemocue value; red shows the CBC values.

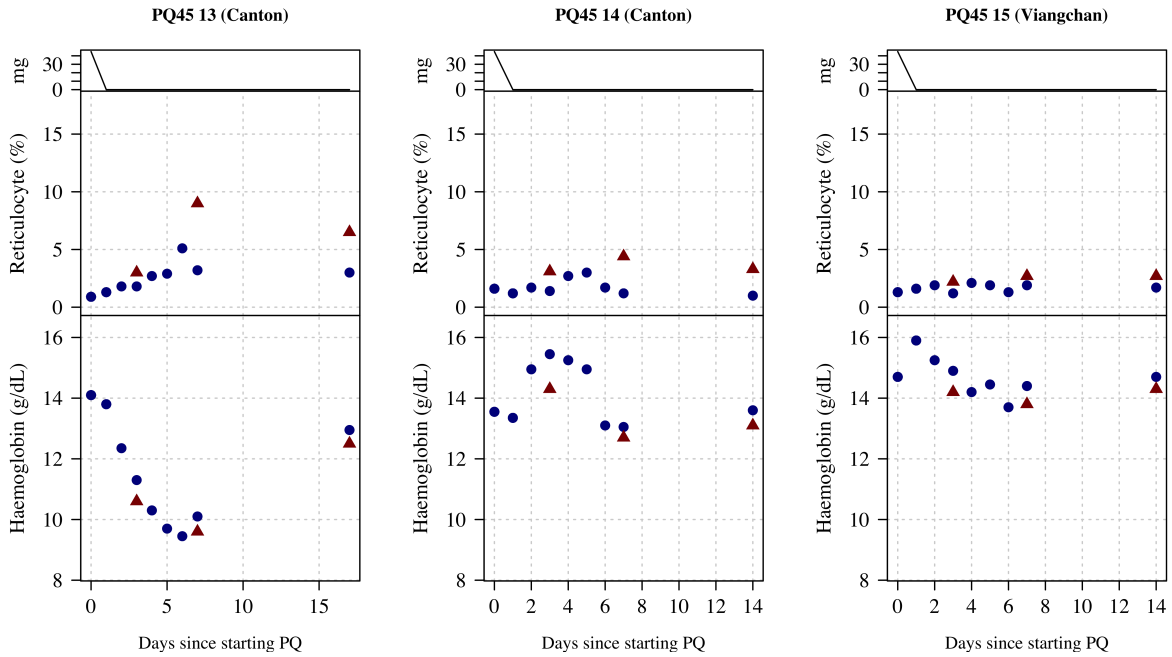


**Figure S23:** Ascending dose: haemoglobin and reticulocyte data over time for volunteer 7 to 9. Blue shows the manual reticulocyte readings and haemocue value; red shows the CBC values.

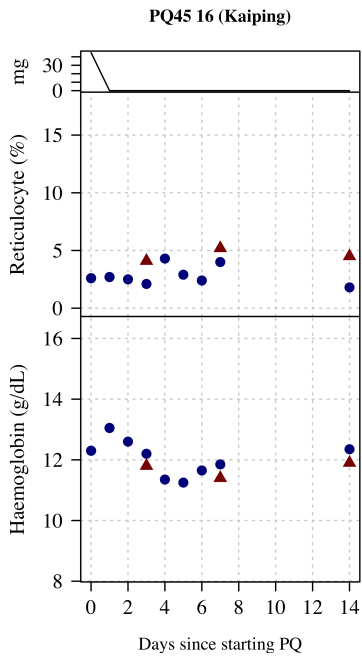


**Figure S24:** Ascending dose: haemoglobin and reticulocyte data over time for volunteer 10 to 12. Blue shows the manual reticulocyte readings and haemocue value; red shows the CBC values.





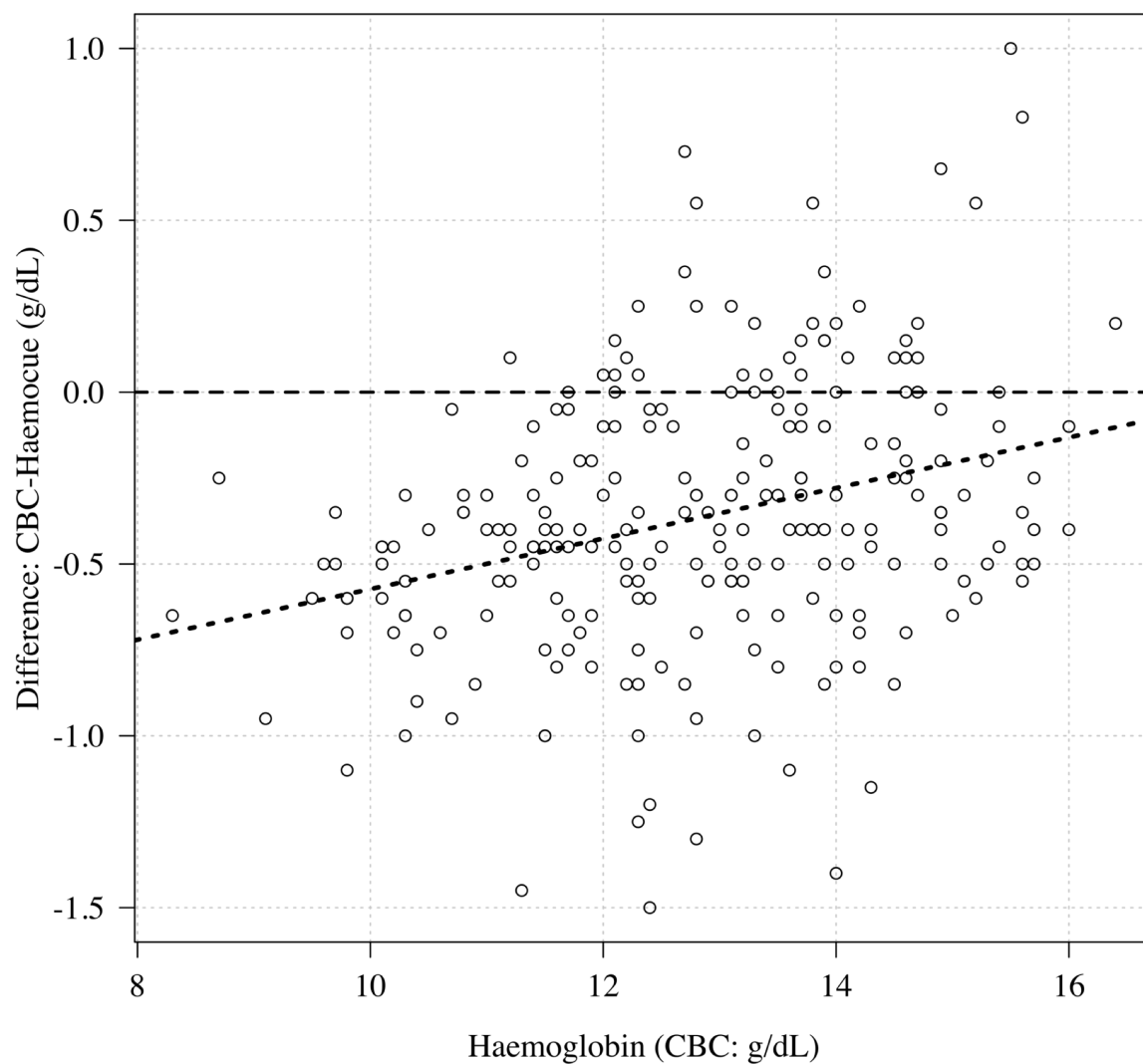
**Figure S25:** Ascending dose: haemoglobin and reticulocyte data over time for volunteer 13 to 15. Blue shows the manual reticulocyte readings and haemocue value; red shows the CBC values.



**Figure S26:** Ascending dose: haemoglobin and reticulocyte data over time for volunteer 16. Blue shows the manual reticulocyte readings and haemocue value; red shows the CBC values.

## S7 Comparison of CBC and Haemocue

Figure ?? compares haemoglobin values at timepoints where patients had both CBC and Haemocue measured. There is a systematic bias at lower haemoglobin values whereby the CBC gives lower recordings relative to the Haemocue. We did not adjust for this in the analysis specifically but report it for interest.



**Figure S27:** Comparison of haemoglobin as measured by CBC (x-axis) and haemocue (difference between CBC and haemocue shown on the y-axis). The haemocue gave systematically higher haemoglobin concentrations relative to the CBC for low haemoglobin concentrations (about 0.5 g/dL higher at a haemoglobin of 10 g/dL).