

## Enhancer profiling identifies epigenetic markers of endocrine resistance and reveals therapeutic options for metastatic castration-resistant prostate cancer patients

The supplementary file includes 9 Figures and 5 Tables.

Tesa M. Severson<sup>1,2,3,\*</sup>, Yanyun Zhu<sup>1,2,\*</sup>, Stefan Prekovic<sup>1,2,\*</sup>, Karianne Schuurman<sup>1</sup>, Holly M. Nguyen<sup>4</sup>, Lisha G. Brown<sup>4</sup>, Sini Hakkola<sup>5</sup>, Yongsoo Kim<sup>1,6</sup>, Jeroen Kneppers<sup>1,2</sup>, Simon Linder<sup>1,2</sup>, Suzan Stelloo<sup>1,2,7</sup>, Cor Liefink<sup>3</sup>, Michiel van der Heijden<sup>3,8</sup>, Matti Nykter<sup>5</sup>, Vincent van der Noort<sup>9</sup>, Joyce Sanders<sup>10</sup>, Ben Morris<sup>3</sup>, Guido Jenster<sup>11</sup>, Geert JLH van Leenders<sup>12</sup>, Mark Pomerantz<sup>13</sup>, Matthew L. Freedman<sup>13,14</sup>, Roderick L. Beijersbergen<sup>6</sup>, Alfonso Urbanucci<sup>5,15</sup>, Lodewyk Wessels<sup>2,3,16</sup>, Eva Corey<sup>4</sup>, Wilbert Zwart<sup>1,2,17#</sup>, Andries M. Bergman<sup>1,8#</sup>

**1** Division of Oncogenomics, The Netherlands Cancer Institute, Amsterdam, the Netherlands

**2** Oncode Institute, the Netherlands

**3** Division of Molecular Carcinogenesis, The Netherlands Cancer Institute, Amsterdam, the Netherlands

**4** Department of Urology, University of Washington, Seattle, WA, USA

**5** Prostate Cancer Research Center, Faculty of Medicine and Health Technology, Tampere University and Tays Cancer Centre, Tampere, Finland

**6** present working address: Department of Pathology, Cancer Center Amsterdam, Amsterdam UMC, Vrije Universiteit Amsterdam, Amsterdam, the Netherlands

**7** present working address: Department of Molecular Biology, Faculty of Science, Radboud Institute for Molecular Life Sciences, Oncode Institute, Radboud University Nijmegen, 6525 GA Nijmegen, The Netherlands.

**8** Division of Medical Oncology, The Netherlands Cancer Institute, Amsterdam, the Netherlands

**9** Department of Biometrics, The Netherlands Cancer Institute, Amsterdam, The Netherlands.

**10** Department of Pathology, The Netherlands Cancer Institute, Amsterdam, the Netherlands

**11** Department of Urology, Erasmus MC, Rotterdam, The Netherlands

**12** Department of Pathology, Erasmus MC Cancer Institute, University Medical Centre, Rotterdam, The Netherlands.

**13** Department of Medical Oncology, Dana-Farber Cancer Institute, Harvard Medical School, Boston, MA, USA.

**14** The Eli and Edythe L. Broad Institute, Cambridge, MA, USA

**15** Department of Tumor Biology, Institute for Cancer Research, Oslo University Hospital, Oslo, Norway

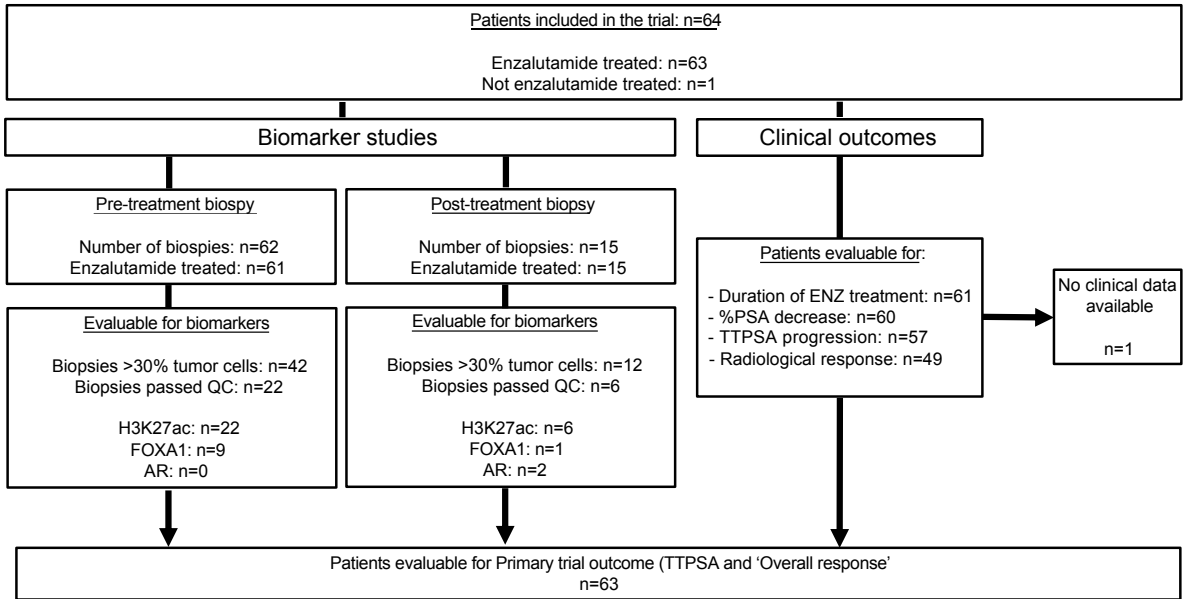
**16** Department of EEMCS, Delft University of Technology, Delft, The Netherlands.

**17** Laboratory of Chemical Biology and Institute for Complex Molecular Systems, Department of Biomedical Engineering, Eindhoven University of Technology, Eindhoven, The Netherlands.

\*shared first authors

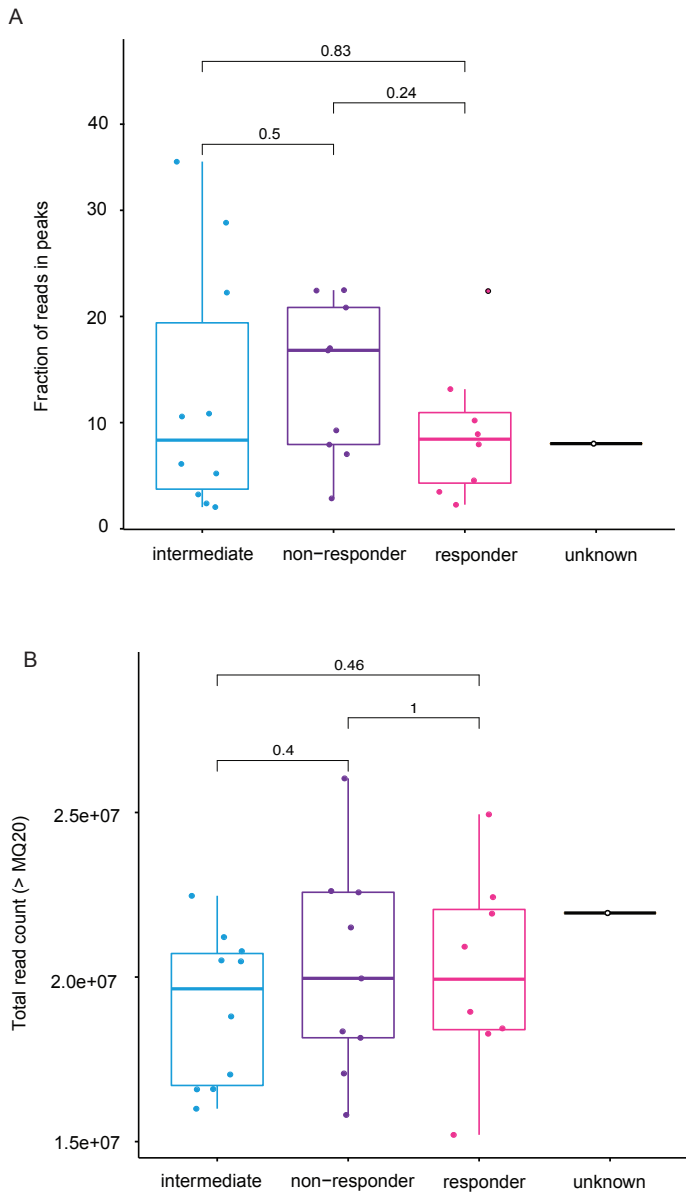
# corresponding authors: [w.zwart@nki.nl](mailto:w.zwart@nki.nl), [a.bergman@nki.nl](mailto:a.bergman@nki.nl)

Supplementary Figure1: Consort diagram



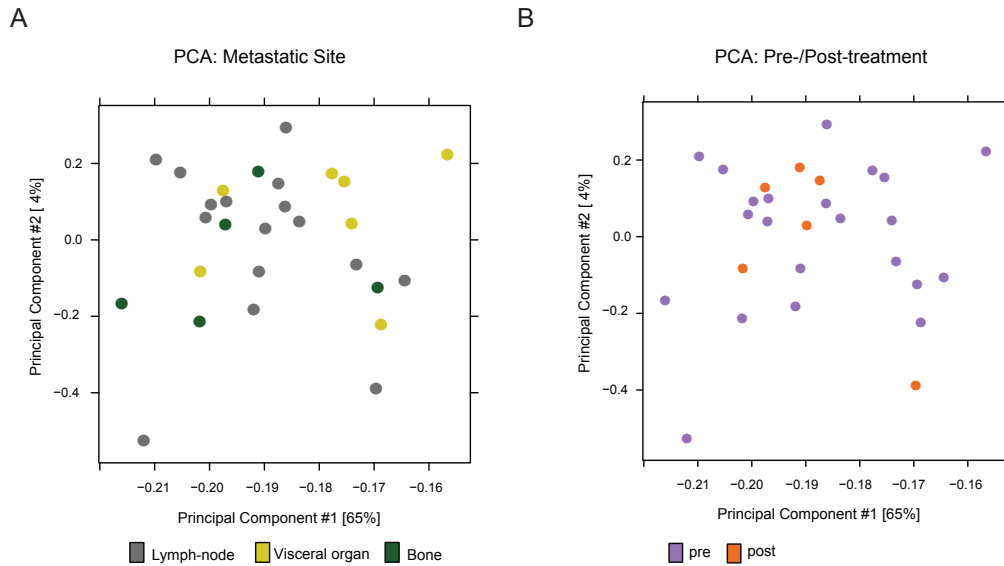
Supplementary Fig. 1 CONSORT diagram displaying the patient and biomarker information for the trial

Supplementary Figure 2: Quality control metrics for H3K27ac ChIP-seq data from mCRPC samples



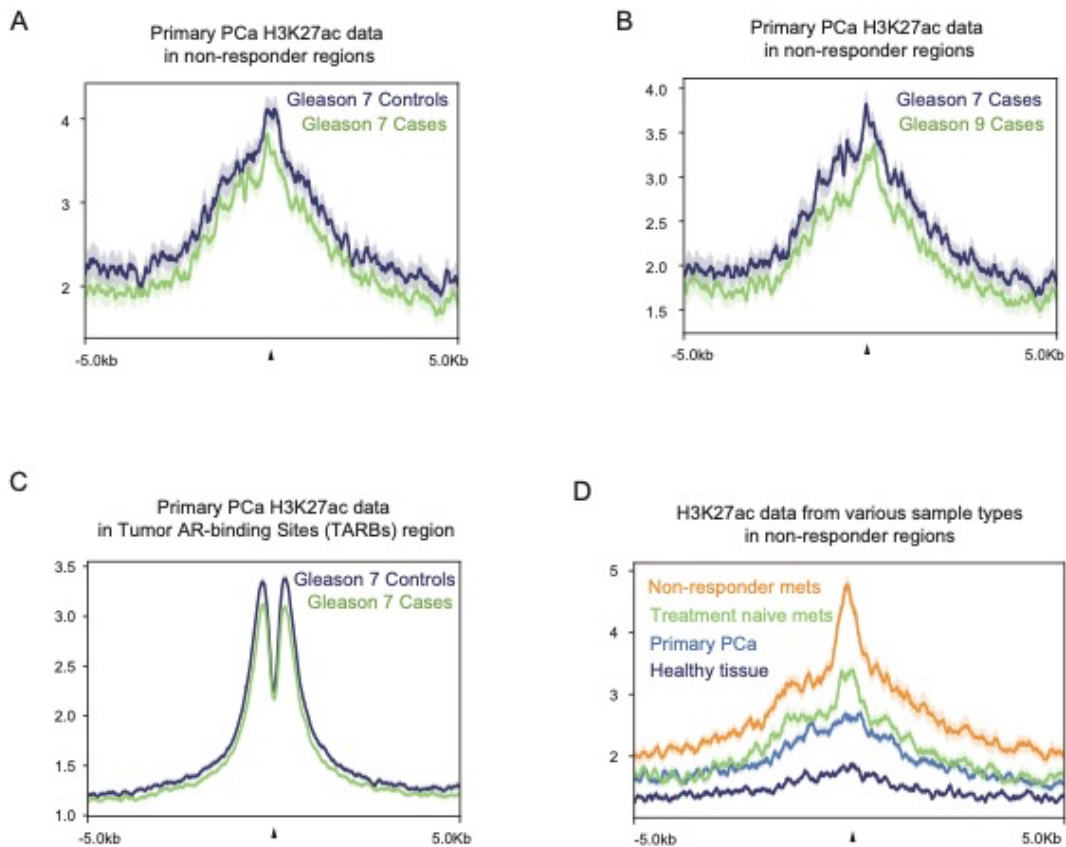
**Supplementary Fig. 2** Quality control metrics for H3K27ac ChIP-seq data from mCRPC samples. **(A)** Boxplots of the fraction of reads in peaks (FRiP) for H3K27ac ChIP-seq samples (n=28). Sample type depicted on the x-axis, FRiP on y-axis. Outlier point is indicated with black outline. For both panels, boxes indicate interquartile range (IQR, 25-75%) of the data. Box center line is the median. Whiskers extend to the minimum or maximum value no more than 1.5 time the IQR from the top or bottom of the box, respectively. **(B)** Boxplots of the total read count (>MQ20) for H3K27ac ChIP-seq samples (n=28). Sample type depicted on the x-axis, read count on y-axis.

Supplementary Figure 3: PCA of H3K27ac profiles with sample type labels



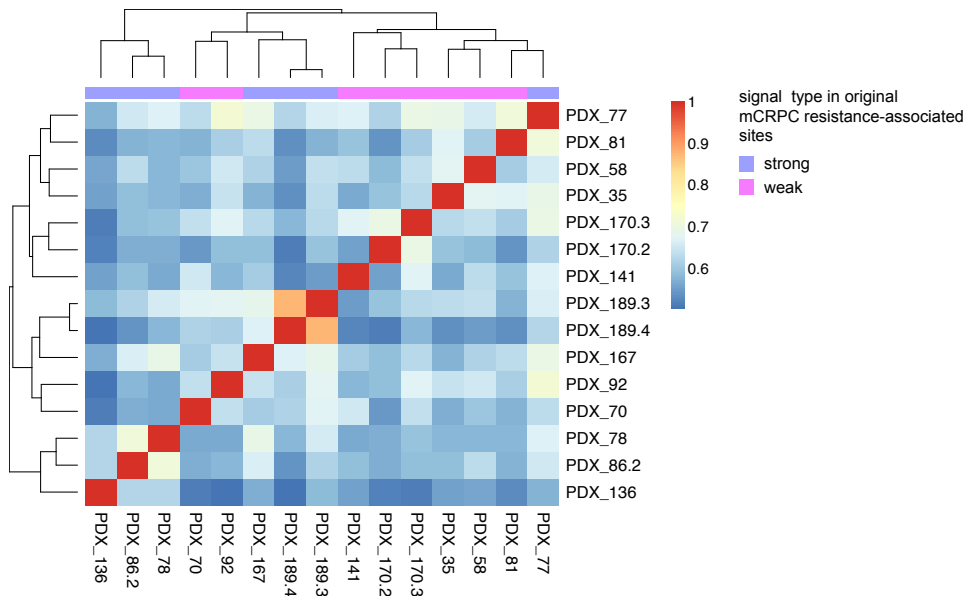
**Supplementary Fig. 3** Principal Component Analysis (PCA) for H3K27ac profiles with sample type labels **(A)** PCA using normalized read counts in all peaks in H3K27ac ChIP-seq data (n=73039) for all samples (n=28) with metastatic site labeled: lymph-node (grey), visceral organ (yellow) and bone (black). **(B)** PCA using normalized read counts in all peaks in H3K27ac ChIP-seq data (n=73039) for all samples (n=28) with treatment status labeled: pre-treatment (purple) or post-treatment (orange).

Supplementary Figure 4: H3K27ac ChIP-seq data analyses in primary prostate cancers, metastatic prostate cancer and normal tissue focused on the 657 mCRPC resistance-associated regions



**Supplementary Fig. 4** H3K27ac ChIP-seq data analyses in primary prostate cancer, metastatic prostate cancer and normal tissue focused on the 657 mCRPC resistance-associated regions. **(A)** Average H3K27ac read count profiles of merged data at the 657 mCRPC resistance-associated H3K27ac sites ( $\pm 5$  kb from the peak center), comparing Gleason 7 primary tumors that progressed within 5 years (Cases, green,  $n=24$ ) or remained free from progression for at least 15 years (Controls, blue,  $n=20$ ). **(B)** Average H3K27ac read count profiles of merged data at the 657 mCRPC resistance-associated H3K27ac sites ( $\pm 5$  kb from the peak center), comparing primary tumor data from Cases which progressed within 5 years and were either Gleason 7 (blue,  $n=24$ ) or Gleason 9 (green,  $n=12$ ). **(C)** Average H3K27ac read count profiles of merged data at Tumor AR binding sites (TARBS,  $n=9182$ ) ( $\pm 5$  kb from the peak center), comparing Gleason 7 primary tumors that progressed within 5 years (Cases, green,  $n=24$ ) or remained free from progression for at least 15 years (Controls, blue,  $n=20$ ). **(D)** Average H3K27ac read count profiles of merged data at the 657 mCRPC resistance-associated H3K27ac sites ( $\pm 5$  kb from the peak center), comparing metastatic non-responder data (this study, orange,  $n=9$ ), treatment-naïve metastatic data (green,  $n=19$ ), data from primary prostate ( $n=9$ ) and data from healthy prostate tissue ( $n=9$ ). For all panels, shading indicates standard-error of the data.

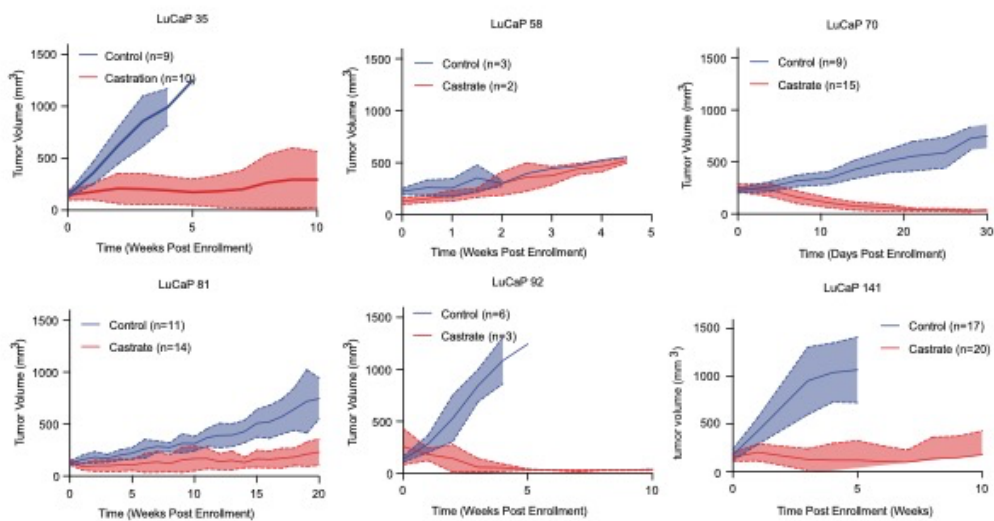
Supplementary Figure 5: H3K27ac ChIP-seq global correlation among PDX samples



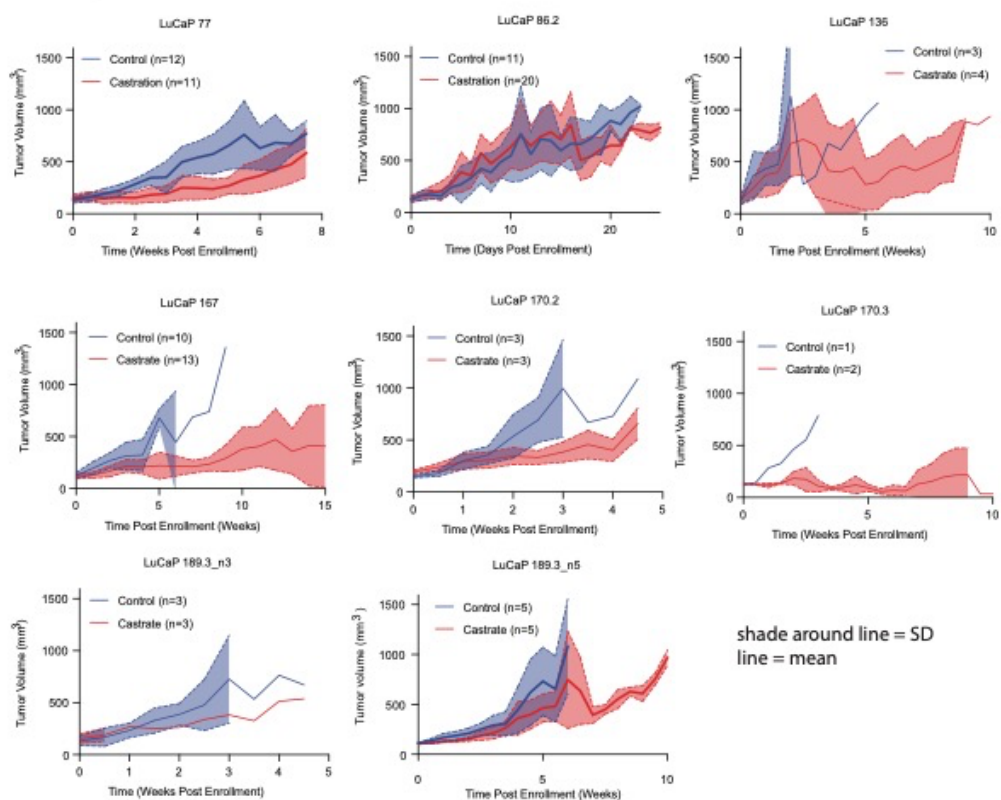
**Supplementary Fig. 5** H3K27ac ChIP-seq global correlation among PDX samples. Correlation of H3K27ac ChIP-seq signal (50kb bins across the genome, Pearson correlation) in mCRPC PDX samples (n=15). Indicated is class of samples based on signal intensity at the 657 H3K27ac mCRPC resistance-associated regions: weak (pink) or strong (purple).

Supplementary Figure 6: *In vivo* response to castration in mCRPC PDX models

weak H3K27Ac

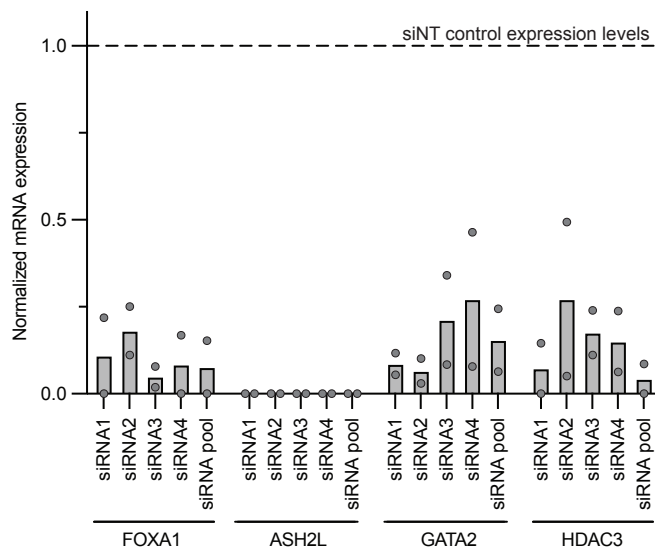


strong H3K27ac



**Supplementary Fig. 6** *In vivo* response to castration in mCRPC PDX models (Top) and (bottom) groups indicate those models with weak or strong H3K27ac signal in 657 mCRPC resistance-associated regions, respectively. For each model, tumor volume (in mm<sup>3</sup>) (y-axis) is indicated in time, for control (blue) or castrated (red) conditions. Time is shown on the x-axis. Solid line indicates the mean of the tumor volume. Shaded area around the solid line indicates the standard deviation of the mean (solid line). Number of animals per group is shown per panel

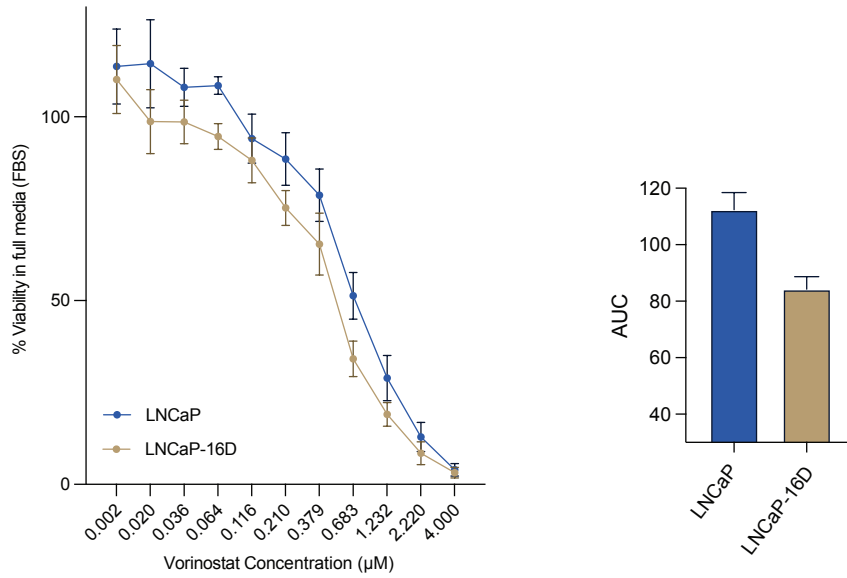
## Supplementary Figure 7: Knockdown confirmation of siRNA deconvolution experiments



**Supplementary Fig. 7** Knockdown confirmation of siRNA deconvolution experiments. Expression levels are shown for each siRNA separately, from 2 biological replicates with 2 technical replicates each. Data are normalized over siControl. Dots indicate the mean of each technical replicate. The bar indicates the mean of these values.



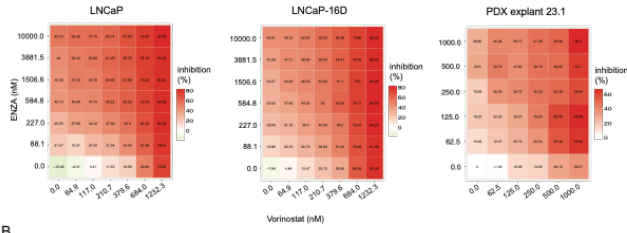
Supplementary Figure 8: Sensitivity to HDAC inhibition



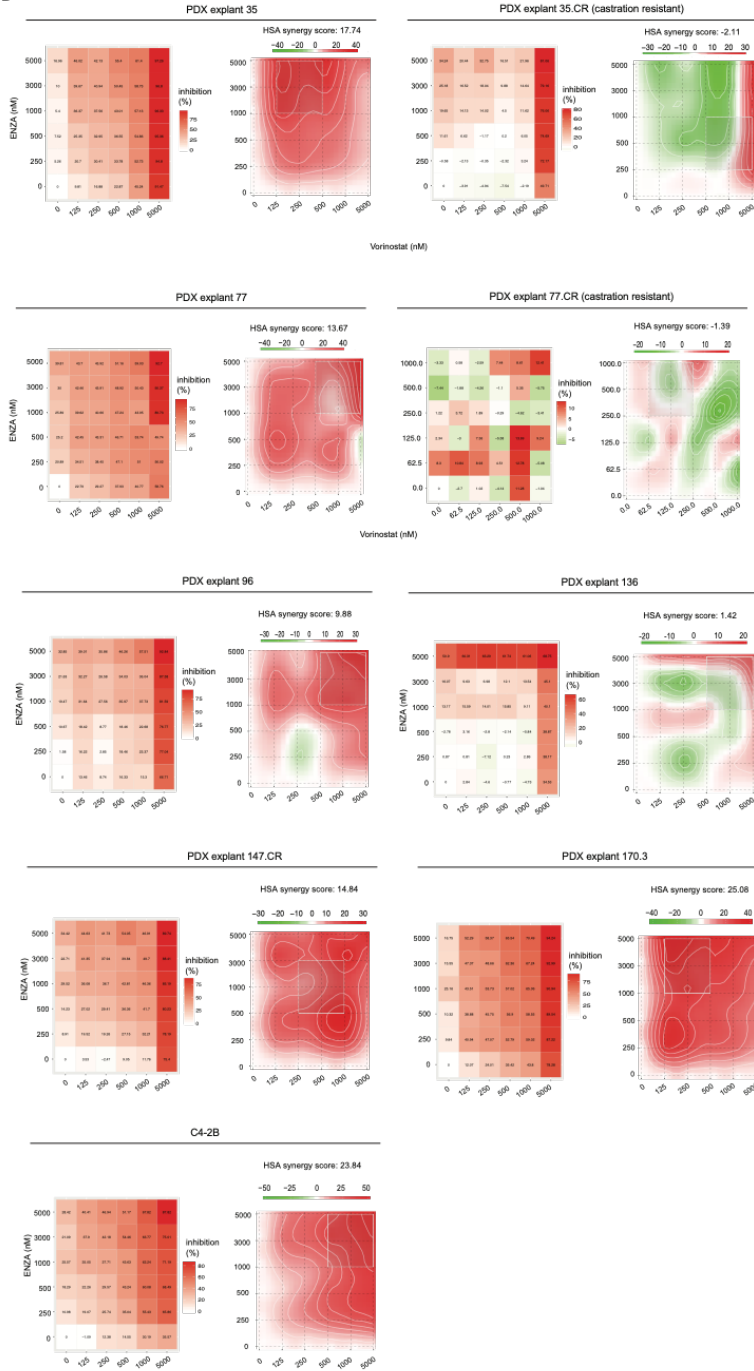
**Supplementary Fig. 8** Sensitivity to HDAC inhibition. (Left) Sensitivity of LNCaP and LNCaP-16D cells to vorinostat alone. LNCaP (blue) and LNCaP-16D (gold) cells are exposed to increasing concentrations of vorinostat, and cell viability is determined in full medium (FBS). Error bars indicated SEM from 4 biological replicates. (Right) Area under the curve (AUC) for both cell lines. Error bars indicate SD from 4 biological replicates.

Supplementary Figure 9: Drug sensitivity and synergy analyses for cell-lines and mCRPC PDX explants

A



B



**Supplementary Fig. 9** Drug sensitivity and synergy analyses for cell-lines and mCRPC PDX explants. **(A)** Drug sensitivity data for synergy data shown in Figure 4. For all cell-lines and mCRPC PDX models, explants were generated and exposed to increasing concentrations of vorinostat (x-axis) or enzalutamide (ENZA) (y-axis) and assessed for viability. Percent inhibition of growth is shown from low (green) to high (red). **(B)** (Left) Drug sensitivity for additional mCRPC models and cell-line (C4-2B) as above. (Right) Drug synergy representation for mCRPC PDX explants and cell-line. Synergy determined using the HAS model (score > 10 indicates synergy with regions of maximal synergy outlined in white).

**Supplementary Table 1. Baseline Characteristics of mCRPC patients with a pre-enzalutamide treatment biopsy**

Patient demographics	Median or value [IQR], Number of Patients (%)						*p:	
	Whole population (n=64)		Pre-treatment biopsies			Post-treatment biopsies		
			Evaluable population (n=22)	P*	Evaluable Population (n=6)	P**		
Age (years)	69	[64-73]	68	[63-72]	0.71	66	[63-72]	0.71
ECOG performance status (number of patients)								
0	10	15.6%	6	27.3%		0	0.0%	
1-2	54	84.4%	16	77.7%		6	100.0%	
Gleason score (number of patients)								
6	5	7.8%	2	9.1%		0	0.0%	
7	19	29.7%	10	45.5%		3	50.0%	
8-10	37	57.8%	9	40.9%		3	50.0%	
Missing data	3	4.7%	1	4.5%		0	0.0%	
Metastatic sites (number of patients)								
Bone	48	75.0%	15	68.2%		5	83.3%	
Lymph nodes	45	70.3%	17	77.3%		4	66.7%	
Visceral organs	22	34.4%	7	31.8%		2	33.3%	
PSA prior to treatment (µg/l)	55.9	[86-148]	94.5	[47-262]	0.81	21.3	[9-46]	0.45
PSA progression prior to treatment								
Yes	60	93.8%	21	95.5%		6	100.0%	
No	3	4.7%		4.5%		0	0.0%	
Not evaluable	1	1.6%	0	0.0%		0	0.0%	
Radiological progression prior to treatment								
Yes	52	81.3%	20	90.9%		5	83.3%	
No	11	17.2%	2	9.1%		1	16.7%	
Not evaluable	1	1.6%	0	0.0%		0	0.0%	
Biopsy side								
Bone	19	29.7%	4	18.2%		1	16.7%	
Lymph nodes	32	50.0%	13	59.1%		3	50.0%	
Visceral organs	13	20.3%	5	22.7%		2	33.3%	
Line of mCRPC treatment								
1	21	32.8%	6	27.3%		1	16.7%	
2	19	29.7%	6	27.3%		4	66.7%	
>2	24	37.5%	10	45.4%		1	16.7%	
Prior treatments								
Taxane drugs	40	62.5%	15	68.2%		5	83.3%	
ARTA	15	23.4%	10	45.5%		1	16.7%	

comparison pre-treatment evaluable population with whole population (Student T-test)

\*\*p: comparison post-treatment evaluable population with whole population (Student T-test)

mCRPC: metastatic Castration Resistant Prostate Cancer

IQR: Inter Quartile Range

ECOG: Eastern Cooperative Oncology Group

PSA: Prostate Specific Antigen

Taxane drugs: docetaxel and/or cabazitaxel

ARTA: Androgen Receptor Targeting Agent

**Supplementary Table 2. Outcomes of enzalutamide treatment of mCRPC patients with a pre-enzalutamide treatment biopsy**

Patient demographics	Median or value [IQR], Number of Patients (%)							
	Whole population (n=64)		Pre-treatment biopsies		Post-treatment biopsies			
			Evaluable population (n=22)	P*	Evaluable population (n=6)	P**		
Follow-up (months)	17	[9-30]	12	[6-20]	0.14	25	[17-33]	0.29
Enzalutamide treated (number of patients)								
Yes	63	98.4%	21	95.5%		6	100.0%	
No	1	1.6%	1	4.5%		0	0.0%	
Enzalutamide dose (mg/day)	160	[160-160]	160	[160-160]	0.28	160	[160-160]	0.68
Duration of treatment (weeks)	22.7	[13-45]	22.9	[14-40]	0.95	34.6	[16-90]	0.19
PSA change from baseline (%)	45.5	[12-73]	48.2	[16-77]	0.73	50.2	[43-66]	0.84
50% PSA decrease from baseline								
Yes	30	46.9%	10	45.5%		3	50.0%	
No	29	45.3%	10	45.5%		2	33.3%	
Not evaluable	5	7.8%	2	9.1%		1	16.7%	
Time to PSA progression (weeks)	17.7	[12-34]	16.4	[11-35]	0.78	24.6	[14-27]	0.82
Not evaluable	7	10.9%	2	9.1%		1	16.7%	
Radiological response								
CR/PR	12	18.8%	8	36.4%		0	0.0%	
SD	11	17.2%	0	0.0%		3	50.0%	
PD	26	40.6%	11	50.0%		2	33.3%	
Not evaluable	15	23.4%	3	13.6%		1	16.7%	
Overall response								
Response	15	23.4%	6	27.3%		2	33.3%	
Intermediate	24	37.5%	8	36.4%		2	33.3%	
No response	24	37.5%	8	36.4%		1	16.7%	
Not evaluable	1	1.6%	0	0.0%		1	16.7%	
Overall survival (months)	14.5	[8-26]	10	[5-15]	0.19	24.5	[17-33]	0.20
Patients alive at the close of database	8	12.5%	3	13.6%		0	0.0%	

\*p: comparison pre-treatment evaluable population with whole population (Student T-test)

\*\*p: comparison post-treatment evaluable population with whole population (Student T-test)

mCRPC: metastatic Castration Resistant Prostate Cancer

IQR: Inter Quartile Range

PSA: Prostate Specific Antigen

CR: Complete Response, PR: Partial Response, SD: Stable Disease, PD: Progressive Disease

**Supplementary Table 3. Number of peaks (MACS2), RSC (relative strand cross-correlation coefficient) values, read counts and Fraction of Reads in Peaks (FRiP) values for all ChIP-seq datasets**

NKI_ID	number_peaks	RSC_value	FRiP	total_MQ20_readcount	factor	response	EGA_EGAS00001006161_alias_ID
wz3535	38569	1.31163	9.08	21607078	AR	intermediate	patient35_post_AR
wz3537	8568	0.83715	1.57	15847289	AR	unknown	patient68_post_AR
wz3018	11840	1.04127	1.76	27703555	FOXA1	non-response	patient42_pre_FOXA1
wz3019	18127	1.15026	3.81	21857548	FOXA1	non-response	patient41_pre_FOXA1
wz3184	21123	0.95601	4.52	11443399	FOXA1	intermediate	patient35_pre_FOXA1
wz3185	19197	1.24551	3.96	21610894	FOXA1	response	patient48_pre_FOXA1
wz3203	11316	1.02411	2.9	13845140	FOXA1	response	patient49_pre_FOXA1
wz3205	34042	1.28796	7.61	21404943	FOXA1	non-response	patient54_pre_FOXA1
wz3211	10468	0.97813	2.45	15756501	FOXA1	intermediate	patient37_pre_FOXA1
wz3226	19226	1.22192	4.71	22055352	FOXA1	non-response	patient60_pre_FOXA1
wz3539	14255	0.87093	2.45	19331353	FOXA1	intermediate	patient35_post_FOXA1
wz3541	11859	1.14908	3.26	24328956	FOXA1	response	patient67_pre_FOXA1
wz2925	50143	0.96048	10.85	21212042	H3K27ac	intermediate	patient9_pre_H3K27ac
wz2926	13529	0.89983	2.04	17040576	H3K27ac	intermediate	patient17_pre_H3K27ac
wz3024	64991	1.10667	17.01	26036673	H3K27ac	non-response	patient42_pre_H3K27ac
wz3025	59168	1.2257	20.85	18155445	H3K27ac	non-response	patient41_pre_H3K27ac
wz3026	47457	1.06629	10.21	24944506	H3K27ac	response	patient20_post_H3K27ac
wz3130	22078	1.10244	6.11	16000146	H3K27ac	intermediate	patient12_pre_H3K27ac
wz3131	12889	0.98111	3.49	15206340	H3K27ac	response	patient26_pre_H3K27ac
wz3167	29791	1.13127	7.94	17074034	H3K27ac	non-response	patient23_pre_H3K27ac
wz3173	13325	0.72371	2.87	15810807	H3K27ac	non-response	patient11_pre_H3K27ac
wz3187	100760	1.30923	28.84	20480022	H3K27ac	intermediate	patient35_pre_H3K27ac
wz3189	36040	1.02221	7.96	22427023	H3K27ac	response	patient48_pre_H3K27ac
wz3190	44749	1.00845	8.92	21929446	H3K27ac	response	patient56_pre_H3K27ac
wz3200	35744	0.93106	7.03	19961048	H3K27ac	non-response	patient25_post_H3K27ac
wz3206	73022	1.31309	22.39	18442118	H3K27ac	response	patient49_pre_H3K27ac
wz3207	44026	1.12156	9.28	21509920	H3K27ac	non-response	patient53_pre_H3K27ac
wz3208	68492	1.30751	22.48	22575845	H3K27ac	non-response	patient54_pre_H3K27ac
wz3214	82775	1.33305	22.25	20783989	H3K27ac	intermediate	patient37_pre_H3K27ac
wz3220	63902	1.13743	13.15	20922983	H3K27ac	response	patient63_post_H3K27ac
wz3227	23086	0.90727	5.21	18804886	H3K27ac	intermediate	patient13_pre_H3K27ac
wz3228	12823	0.76617	2.4	20509302	H3K27ac	intermediate	patient29_pre_H3K27ac
wz3230	54349	1.29656	22.44	22612193	H3K27ac	non-response	patient60_pre_H3K27ac
wz3396	10710	0.97102	3.24	16594416	H3K27ac	intermediate	patient16_post_H3K27ac
wz3397	11809	0.96084	2.27	18945269	H3K27ac	response	patient52_pre_H3K27ac
wz3542	65764	1.41907	34.59	22469696	H3K27ac	intermediate	patient35_post_H3K27ac
wz3543	40453	1.079	16.81	18352062	H3K27ac	non-response	patient65_pre_H3K27ac
wz3544	35446	1.10497	8.02	21946402	H3K27ac	unknown	patient68_post_H3K27ac
wz3545	15551	0.99225	4.57	18280001	H3K27ac	response	patient67_pre_H3K27ac
wz678	48391	1.01082	10.59	16591501	H3K27ac	intermediate	patient7_pre_H3K27ac



**Supplementary Table 4. Genomic features annotation of differential peaksets.**

<b>Annotated peaks generated by ChIPsee</b>		
# Non-responder enriched peaks		
# 657/657 peaks were annotated		
# Genomic Annotation Summary:		
Feature	Frequency	
Promoter	3.805175	
5' UTR	0.608828	
3' UTR	1.826484	
1st Exon	0.608828	
Other Exon	5.936073	
1st Intron	12.024353	
Other Intron	36.225266	
Downstream	0.761035	
Distal Intergenic	38.203957	
# Responder_enriched		
# 25/25 peaks were annotated		
# Genomic Annotation Summary:		
Feature	Frequency	
Promoter		4
Other Exon		8
1st Intron		24
Other Intron		40
Downstream (<=300)		4
Distal Intergenic		20

**Supplementary Table 5. List of Public ChIP-seq data sets queried for GIGGLE enrichment analysis and results**

<b>CistromeDB human prostate specific experiments</b>			<b>Giggle results</b>			
GEO_ID	Cell_type	Factor	Factor	median_GIGGLE_combo_score	rank	siRNA_focused_screen
GSM353640	22RV1	AR	ZMYND8	-0.081722	1	FALSE
GSM759660	LNCaP	AR	EED	-0.008737	2	FALSE
GSM759659	LNCaP	AR	EP300	0	3	FALSE
GSM759658	LNCaP	AR	MED12	0	4	FALSE
GSM759657	LNCaP	AR	SUZ12	0	5	FALSE
GSM696839	LNCaP	AR	E2F1	0	6	FALSE
GSM353644	LNCaP	AR	KDM1A	0	7	FALSE
GSM353642	LNCaP	AR	CTBP1	0	8	FALSE
GSM353641	LNCaP	AR	CTBP2	0	9	FALSE
GSM686944	LNCaP	EP300	FOXP1	0	10	FALSE
GSM686943	LNCaP	EP300	CHD1	0	11	FALSE
GSM353648	LNCaP	ERG	SMARCA4	0	12	FALSE
GSM759664	LNCaP	FOXA1	NANOG	0	13	FALSE
GSM759663	LNCaP	FOXA1	CCNT1	0	14	FALSE
GSM759662	LNCaP	FOXA1	WDHD1	0	15	FALSE
GSM759661	LNCaP	FOXA1	ZFX	0	16	FALSE
GSM353633	LNCaP	FOXA1	TRIM28	0	17	FALSE
GSM686942	LNCaP	H2AZ	CTCF	0.031704	18	FALSE
GSM686941	LNCaP	H2AZ	BMI1	0.088678	19	FALSE
GSM686946	LNCaP	MED12	POU2F1	0.13813	20	FALSE
GSM686945	LNCaP	MED12	ETS1	0.233216	21	FALSE
GSM759670	LNCaP	NR3C1	JUND	0.263972	22	FALSE
GSM759669	LNCaP	NR3C1	WDR5	0.554446	23	FALSE
GSM696844	LNCaP	POLR2A	SFPQ	0.572018	24	FALSE
GSM696843	LNCaP	POLR2A	DNMT1	0.68868	25	FALSE
GSM353618	LNCaP	POLR2A	MED1	0.946964	26	FALSE
GSM353617	LNCaP	POLR2A	MYC	1.023162	27	FALSE
GSM353650	RWPE1	ERG	RNF2	1.476786	28	FALSE
GSM353649	RWPE1	ERG	TRIM24	2.181727	29	FALSE
GSM696842	VCaP	AR	ESR1	2.360895	30	FALSE
GSM696841	VCaP	AR	H2AZ	2.384988	31	FALSE
GSM353646	VCaP	AR	BRD4	3.114181	32	FALSE
GSM353638	VCaP	AR	RUNX1	3.161102	33	FALSE
GSM353636	VCaP	AR	HDAC1	3.173736	34	FALSE
GSM353647	VCaP	ERG	RELA	3.44426	35	FALSE

GSM353639	VCaP	ERG		BRD3	3.914287	36	FALSE
GSM353637	VCaP	ERG		BRD2	4.181282	37	FALSE
GSM353630	VCaP	FOXA1		EZH2	4.554295	38	FALSE
GSM353623	VCaP	POLR2A		ERG	5.898607	39	FALSE
GSM353608	VCaP	POLR2A		DAXX	7.318007	40	FALSE
GSM353607	VCaP	POLR2A		POLR2A	7.491274	41	FALSE
GSM353651	None	AR		GABPA	7.631724	42	FALSE
GSM353652	None	ERG		SRC	11.44643	43	FALSE
GSM353656	None	POLR2A		ETV1	12.23014	44	FALSE
GSM838400	C4-2B	RUNX2		MRE11A	13.28621	45	FALSE
GSM801011	VCaP	AR		ARID1A	19.56408	46	FALSE
GSM801012	VCS2	AR		ERF	20.03243	47	TRUE
GSM699632	LNCaP	NKX3-1		CREB1	27.94717	48	TRUE
GSM699633	LNCaP	NKX3-1		NKX3-1	39.18543	49	TRUE
GSM699634	LNCaP	FOXA1		GRHL2	46.4107	50	TRUE
GSM699635	LNCaP	FOXA1		HDAC2	59.70467	51	TRUE
GSM738817	PC-3	ETV4		HDAC3	133.1866	52	TRUE
GSM738818	PC-3	JUND		GATA2	148.4117	53	TRUE
GSM738821	RWPE1	ETS1		AR	149.3384	54	TRUE
GSM738822	RWPE1	GABPA		HOXB13	173.5875	55	TRUE
GSM738823	RWPE1	ERG		PIAS1	202.5997	56	TRUE
GSM738824	RWPE1	ETV1		TLE3	203.3019	57	TRUE
GSM717392	VCaP	AR		SUMO2	272.1432	58	TRUE
GSM717393	VCaP	AR		ASH2L	278.3605	59	TRUE
GSM717394	VCaP	AR		FOXA1	320.1546	60	TRUE
GSM717395	VCaP	ERG		HNF4G	331.7467	61	TRUE
GSM717396	VCaP	ERG		TOP1	428.4343	62	TRUE
GSM717397	VCaP	ERG		NR3C1	460.1611	63	TRUE
GSM717398	VCaP	HDAC1					
GSM717399	VCaP	HDAC1					
GSM717400	VCaP	HDAC2					
GSM717401	VCaP	HDAC2					
GSM717402	VCaP	HDAC3					
GSM717403	VCaP	HDAC3					
GSM717404	VCaP	EZH2					
GSM717405	VCaP	EZH2					
GSM775364	LNCaP	AR					
GSM775365	LNCaP	AR					
GSM927071	RWPE1	ERG					
GSM105939							
7	LNCaP	POLR2A					
GSM105939							
4	LNCaP	POLR2A					
GSM105939							
6	LNCaP	POLR2A					

GSM105939			
8	LNCaP	POLR2A	
GSM105939			
5	LNCaP	POLR2A	
GSM105939			
3	LNCaP	POLR2A	
GSM916524	LNCaP	FOXA1	
GSM916523	LNCaP	FOXA1	
GSM916521	LNCaP	AR	
GSM916522	LNCaP	AR	
GSM969562	LNCaP-abl	EZH2	
GSM969570	LNCaP	EZH2	
GSM969565	LNCaP-abl	AR	
GSM969566	LNCaP-abl	POLR2A	
GSM969572	LNCaP	SUZ12	
GSM969564	LNCaP-abl	SUZ12	
GSM984381	C4-2B	AR	
GSM984390	22RV1	AR	
GSM984385	C4-2B	AR	
GSM984392	C4-2B	FOXA1	
GSM984386	LNCaP	AR	
GSM984389	22RV1	AR	
GSM984388	LNCaP	AR	
GSM984391	C4-2B	FOXA1	
GSM984382	C4-2B	AR	
GSM984383	C4-2B	AR	
GSM984387	LNCaP	AR	
GSM984380	C4-2B	AR	
GSM714610	LNCaP	REPIN1	
GSM989640	LNCaP	NKX3-1	
GSM980649	LNCaP	AR	
GSM980654	LNCaP	POLR2A	
GSM980660	VCaP	NR3C1	
GSM980648	LNCaP	AR	
GSM980664	LNCaP	NR3C1	
GSM980658	VCaP	AR	
GSM980653	LNCaP	POLR2A	
GSM980663	LNCaP	AR	
GSM980650	LNCaP	AR	
GSM980657	VCaP	AR	
GSM980665	LNCaP	NR3C1	
GSM980655	LNCaP	NR3C1	
GSM980651	LNCaP	AR	
GSM980647	LNCaP	AR	

GSM980662	LNCaP	AR	
GSM980652	LNCaP	AR	
GSM114532			
2	LNCaP	ETV1	
GSM114532			
4	LNCaP	AR	
GSM114532			
5	LNCaP	AR	
GSM947527	PrEC	CTCF	
GSM947528	LNCaP	CTCF	
GSM923508	LNCaP	AR	
GSM923509	LNCaP	AR	
GSM117448			
6	LNCaP	AR	
GSM117448			
2	LNCaP	AR	
GSM117448			
8	LNCaP	AR	
GSM117448			
7	LNCaP	AR	
GSM117448			
1	LNCaP	AR	
GSM117448			
0	LNCaP	AR	
GSM117448			
5	LNCaP	AR	
GSM117449			
1	LNCaP	AR	
GSM117449			
0	LNCaP	AR	
GSM117448			
4	LNCaP	AR	
GSM117448			
3	LNCaP	AR	
GSM104547			
2	DU145	EED	
GSM104547			
3	DU145	EED	
GSM105684			
7	EP156T	TP63	
GSM109749			
6	LNCaP	SFPQ	
GSM109749			
7	LNCaP	SFPQ	
GSM113859			
1	DU145	RING1	
GSM113859			
2	DU145	RNF2	
GSM113859			
3	DU145	RNF2	
GSM113859			
4	DU145	BMI1	
GSM113859			
5	DU145	BMI1	
GSM124944			
9	LNCaP	TCF7L2	
GSM127487			
1	LNCaP	AR	
GSM127487			
2	LNCaP	AR	

GSM127487		
3	LNCaP	FOXA1
GSM817347	VCaP	AR
GSM817348	VCaP	AR
GSM817349	VCaP	AR
GSM817350	VCaP	AR
GSM817351	VCaP	AR
GSM817352	VCaP	AR
GSM817353	VCaP	AR
GSM817354	VCaP	AR
GSM995943	PC-3	AGO1
GSM995944	PC-3	AGO2
GSM120788		
7	LNCaP	AR
GSM120788		
8	LNCaP	AR
GSM120788		
9	LNCaP	E2F1
GSM120789		
0	LNCaP	E2F1
GSM120789		
1	LNCaP	AR
GSM120789		
2	LNCaP	AR
GSM120789		
3	LNCaP	E2F1
GSM120789		
4	LNCaP	E2F1
GSM120789		
5	LNCaP	AR
GSM120789		
6	LNCaP	AR
GSM120789		
7	LNCaP	E2F1
GSM120789		
8	LNCaP	E2F1
GSM120789		
9	LNCaP	AR
GSM120790		
0	LNCaP	AR
GSM120790		
1	LNCaP	E2F1
GSM120790		
2	LNCaP	E2F1
GSM120790		
3	LNCaP	AR
GSM120790		
4	LNCaP	AR
GSM120790		
5	LNCaP	E2F1
GSM120790		
6	LNCaP	E2F1
GSM120790		
7	LNCaP	AR
GSM120790		
8	LNCaP	AR
GSM120790		
9	LNCaP	E2F1

GSM120791			
0	LNCaP	E2F1	
GSM120791			
1	LNCaP	AR	
GSM120791			
2	LNCaP	AR	
GSM120791			
3	LNCaP	E2F1	
GSM120791			
4	LNCaP	E2F1	
GSM120791			
5	LNCaP	AR	
GSM120791			
6	LNCaP	E2F1	
GSM120791			
7	LNCaP	E2F1	
GSM132894			
5	VCaP	AR	
GSM132894			
7	VCaP	AR	
GSM132895			
0	VCaP	AR	
GSM132895			
2	VCaP	AR	
GSM132895			
3	VCaP	AR	
GSM132895			
4	VCaP	AR	
GSM132895			
5	VCaP	AR	
GSM132895			
6	VCaP	AR	
GSM132895			
7	VCaP	AR	
GSM132895			
8	VCaP	AR	
GSM132895			
9	VCaP	BRD4	
GSM132896			
0	VCaP	BRD4	
GSM132896			
1	VCaP	BRD4	
GSM132896			
2	VCaP	BRD4	
GSM132896			
3	VCaP	BRD4	
GSM132896			
4	VCaP	POLR2A	
GSM132896			
5	VCaP	POLR2A	
GSM132896			
6	VCaP	POLR2A	
GSM132896			
7	VCaP	POLR2A	
GSM132896			
8	VCaP	POLR2A	
GSM132896			
9	VCaP	BRD2	
GSM132897			
0	VCaP	BRD2	
GSM132897			
1	VCaP	BRD2	

GSM132897			
2	VCaP	BRD3	
GSM132897			
3	VCaP	BRD3	
GSM132897			
4	VCaP	BRD3	
GSM132897			
5	VCaP	BRD4	
GSM132897			
6	VCaP	BRD4	
GSM132897			
7	VCaP	BRD4	
GSM132897			
8	VCaP	ERG	
GSM132897			
9	VCaP	ERG	
GSM132898			
0	VCaP	ERG	
GSM132898			
1	VCaP	ERG	
GSM100688			
7	LNCaP	CTCF	
GSM100687			
4	LNCaP	CTCF	
GSM116414			
1	DU145	AR	
GSM116414			
2	DU145	FOXA1	
GSM116414			
3	DU145	FOXA1	
GSM116414			
4	DU145	FOXA1	
GSM116414			
5	DU145	FOXA1	
GSM116414			
6	DU145	FOXA1	
GSM116414			
7	DU145	FOXA1	
GSM116414			
8	DU145	FOXA1	
GSM116414			
9	DU145	AR	
GSM116415			
0	DU145	FOXA1	
GSM116415			
1	DU145	AR	
GSM116415			
2	DU145	FOXA1	
GSM116415			
3	DU145	AR	
GSM116415			
4	DU145	FOXA1	
GSM119365			
6	VCaP	ERG	
GSM119365			
7	VCaP	ERG	
GSM119365			
8	VCaP	ERG	
GSM119365			
9	VCaP	GABPA	
GSM119366			
0	VCaP	GABPA	



GSM119366			
1	VCaP	GABPA	
GSM130823			
5	PC-3	AR	
GSM130823			
6	PC-3	AR	
GSM130823			
7	PC-3	AR	
GSM130823			
9	PC-3	AR	
GSM130824			
0	PC-3	AR	
GSM130824			
1	PC-3	AR	
GSM132787			
1	LNCaP	AR	
GSM132787			
2	LNCaP	AR	
GSM133336			
8	LNCaP	WDR5	
GSM133336			
9	LNCaP	WDR5	
GSM138386			
9	PrEC	POLR2A	
GSM138387			
5	PC-3	CBX8	
GSM138387			
7	PC-3	CTCF	
GSM141231			
7	22RV1	AR	
GSM141231			
9	22RV1	AR	
GSM141512			
3	LNCaP	CSNK2A1	
GSM141512			
4	LNCaP	POLR2A	
GSM141512			
5	LNCaP	POLR2A	
GSM142248			
2	VCaP	ERG	
GSM142248			
3	VCaP	ERG	
GSM142452			
6	DU145	ETS1	
GSM142452			
7	DU145	ELF1	
GSM142452			
8	DU145	ELK4	
GSM142452			
9	DU145	GABPA	
GSM142453			
0	DU145	JUND	
GSM106813			
6	LNCaP	FOXA1	
GSM106813			
7	LNCaP	FOXA1	
GSM106966			
9	LNCaP	AR	
GSM106967			
0	LNCaP	AR	
GSM106968			
1	LNCaP	AR	

GSM106968			
2	LNCaP	AR	
GSM107127			
6	LNCaP	AR	
GSM107127			
7	LNCaP	AR	
GSM107128			
0	LNCaP	AR	
GSM107128			
1	LNCaP	AR	
GSM107128			
4	None	AR	
GSM107128			
5	None	AR	
GSM107128			
6	None	AR	
GSM107128			
7	None	AR	
GSM107128			
8	None	AR	
GSM107128			
9	None	AR	
GSM107129			
0	None	AR	
GSM107129			
1	None	AR	
GSM107129			
2	None	AR	
GSM107129			
3	None	AR	
GSM107129			
4	None	AR	
GSM107129			
5	None	AR	
GSM107610			
9	VCaP	ESR1	
GSM107611			
0	VCaP	ESR1	
GSM107611			
1	VCaP	ESR1	
GSM107611			
2	NCI-H660	ESR1	
GSM123692			
2	LNCaP	AR	
GSM123692			
6	LNCaP	AR	
GSM127976			
9	LNCaP	KDM1A	
GSM127977			
0	VCaP	KDM1A	
GSM134026			
3	None	PR	
GSM141076			
2	LNCaP	CTBP1	
GSM141076			
3	LNCaP	CTBP2	
GSM141076			
4	LNCaP	CTBP1	
GSM141076			
5	LNCaP	CTBP2	
GSM141076			
8	VCaP	AR	

GSM141077			
0	VCaP	FOXP1	
GSM141077			
1	VCaP	RUNX1	
GSM141077			
2	VCaP	AR	
GSM141077			
3	VCaP	AR	
GSM141077			
4	VCaP	AR	
GSM141077			
5	VCaP	FOXA1	
GSM141077			
6	VCaP	FOXA1	
GSM141078			
2	LNCaP	AR	
GSM141078			
4	VCaP	AR	
GSM141078			
5	VCaP	AR	
GSM141078			
7	LNCaP	AR	
GSM141078			
8	LNCaP	FOXA1	
GSM141078			
9	LNCaP	FOXA1	
GSM141079			
0	LNCaP	AR	
GSM135483			
0	VCaP	AR	
GSM135483			
1	VCaP	AR	
GSM135483			
2	VCaP	PIAS1	
GSM135483			
3	VCaP	PIAS1	
GSM135483			
4	VCaP	PIAS1	
GSM135483			
5	VCaP	PIAS1	
GSM135483			
6	VCaP	FOXA1	
GSM135483			
7	VCaP	FOXA1	
GSM135483			
8	VCaP	FOXA1	
GSM135483			
9	VCaP	FOXA1	
GSM146345			
9	VCaP	AR	
GSM146346			
0	VCaP	AR	
GSM146346			
1	VCaP	FOXA1	
GSM146346			
2	VCaP	FOXA1	
GSM146346			
3	VCaP	FOXA1	
GSM146346			
4	VCaP	FOXA1	
GSM146346			
5	VCaP	POLR2A	

GSM146346			
6	VCaP	POLR2A	
GSM148992			
6	VCaP	ASH2L	
GSM148992			
7	VCaP	ASH2L	
GSM152782			
2	LNCaP	AR	
GSM152782			
3	LNCaP	AR	
GSM152783			
4	LNCaP	AR	
GSM152783			
5	LNCaP	AR	
GSM152783			
6	LNCaP	FOXP1	
GSM152783			
7	LNCaP	FOXP1	
GSM152783			
9	LNCaP	RUNX1	
GSM152784			
0	LNCaP	RUNX1	
GSM152784			
1	LNCaP	EZH2	
GSM152784			
3	LNCaP	AR	
GSM152784			
4	LNCaP	AR	
GSM154377			
4	LNCaP	AR	
GSM154377			
5	LNCaP	MRE11A	
GSM154377			
6	LNCaP	MRE11A	
GSM154379			
1	LNCaP	TOP1	
GSM154379			
2	LNCaP	TOP1	
GSM155557			
0	VCaP	SUMO2	
GSM155557			
1	VCaP	SUMO2	
GSM155557			
2	VCaP	SUMO2	
GSM155557			
3	VCaP	SUMO2	
GSM160054			
4	LNCaP	GATA2	
GSM151552			
0	R1-AD1	AR	
GSM151552			
1	R1-AD1	AR	
GSM151552			
2	R1-AD1	AR	
GSM151552			
3	R1-AD1	AR	
GSM151552			
4	R1-AD1	AR	
GSM151552			
5	R1-AD1	AR	
GSM151552			
6	R1-D567	AR	

GSM151552			
7	R1-D567	AR	
GSM151552			
8	R1-D567	AR	
GSM165641	LNCaP-		
0	abl	E2F1	
GSM138521			
9	PC-3	ALKBH3	
GSM167802			
9	PC-3	DAXX	
GSM167803			
0	PC-3	DAXX	
GSM167803			
1	PC-3	DNMT1	
GSM167803			
2	PC-3	DNMT1	
GSM941194	LNCaP	GATA2	
GSM941195	LNCaP	GATA2	
GSM157644			
7	LNCaP	AR	
GSM157644			
9	LNCaP	VDR	
GSM157645			
1	LNCaP	FOXA1	
GSM161331			
0	LNCaP	AR	
GSM161331			
2	BicR	AR	
GSM161331			
6	BicR	AR	
GSM161332			
0	BicR	AR	
GSM161332			
2	LNCaP	TET2	
GSM162262			
4	VCaP	SUMO2	
GSM162262			
5	VCaP	SUMO2	
GSM162262			
6	VCaP	SUMO2	
GSM162262			
7	VCaP	SUMO2	
GSM162262			
8	VCaP	PIAS1	
GSM162262			
9	VCaP	PIAS1	
GSM162263			
0	VCaP	PIAS1	
GSM162263			
1	VCaP	PIAS1	
GSM162263			
2	VCaP	POLR2A	
GSM162263			
3	VCaP	POLR2A	
GSM162263			
4	VCaP	POLR2A	
GSM162263			
5	VCaP	POLR2A	
GSM162263			
6	VCaP	POLR2A	
GSM162263			
7	VCaP	POLR2A	

GSM177758			
8	VCaP	POLR2A	
GSM177758			
9	VCaP	POLR2A	
GSM177759			
0	VCaP	POLR2A	
GSM177759			
1	VCaP	POLR2A	
GSM177759			
3	VCaP	POLR2A	
GSM177759			
4	VCaP	POLR2A	
GSM177759			
5	VCaP	POLR2A	
GSM177759			
7	VCaP	SUMO2	
GSM177759			
8	VCaP	SUMO2	
GSM177759			
9	VCaP	SUMO2	
GSM177760			
1	VCaP	SUMO2	
GSM177760			
4	VCaP	SUMO2	
GSM177760			
5	VCaP	SUMO2	
GSM177760			
6	VCaP	SUMO2	
GSM177760			
8	VCaP	SUMO2	
GSM177760			
9	VCaP	SUMO2	
GSM177761			
0	VCaP	SUMO2	
GSM181638			
1	DUCaP	AR	
GSM181638			
2	DUCaP	AR	
GSM135839			
5	None	AR	
GSM135839			
6	None	AR	
GSM135839			
7	None	AR	
GSM135839			
8	None	AR	
GSM135839			
9	None	AR	
GSM135840			
0	None	AR	
GSM135840			
1	None	AR	
GSM135840			
2	None	AR	
GSM135840			
3	None	AR	
GSM135840			
4	None	AR	
GSM135840			
5	None	AR	
GSM135840			
6	None	AR	

GSM135840			
7	None	AR	
GSM135840			
8	None	AR	
GSM135840			
9	None	AR	
GSM135841			
0	None	AR	
GSM135841			
1	None	AR	
GSM135841			
2	None	AR	
GSM135841			
3	None	AR	
GSM135841			
4	None	AR	
GSM150118			
4	LNCaP	AR	
GSM150118			
5	LNCaP	AR	
GSM150118			
6	LNCaP	AR	
GSM150118			
7	LNCaP	AR	
GSM150118			
8	C4-2B	AR	
GSM150118			
9	C4-2B	AR	
GSM150119			
0	C4-2B	AR	
GSM150119			
1	C4-2B	AR	
GSM152702			
3	LNCaP	AR	
GSM152702			
4	LNCaP	AR	
GSM152702			
5	LNCaP	AR	
GSM152702			
6	LNCaP	AR	
GSM152703			
3	CWR22P c	AR	
GSM152703			
4	CWR22P c	AR	
GSM152703			
6	CWR22P c	AR	
GSM159821			
8	None	AR	
GSM159821			
9	None	AR	
GSM159822			
0	None	AR	
GSM159822			
1	None	AR	
GSM159822			
2	None	AR	
GSM159822			
3	None	AR	
GSM159822			
4	None	AR	
GSM159822			
5	None	AR	

GSM171676			
2	None	FOXA1	
GSM171676			
3	None	HOXB13	
GSM171676			
4	LNCaP	HOXB13	
GSM171676			
5	LHSAR	FOXA1	
GSM171676			
6	LHSAR	HOXB13	
GSM171676			
7	LHSAR	HOXB13	
GSM171676			
8	LHSAR	HOXB13	
GSM171676			
9	LHSAR	AR	
GSM171677			
0	LHSAR	AR	
GSM191772			
6	PC-3	EP300	
GSM191772			
7	PC-3	EP300	
GSM191772			
8	PC-3	EP300	
GSM191772			
9	PC-3	EP300	
GSM191773			
0	PC-3	EP300	
GSM157365			
3	LNCaP	CHD1	
GSM157365			
4	LNCaP	CHD1	
GSM157365			
5	LNCaP	KDM1A	
GSM157365			
6	LNCaP	KDM1A	
GSM167909			
2	LNCaP-abl	MED1	
GSM167909			
3	LNCaP-abl	MED1	
GSM167909			
4	LNCaP-abl	POLR2A	
GSM167909			
5	LNCaP-abl	POLR2A	
GSM167909			
6	LNCaP-abl	MED1	
GSM167909			
7	LNCaP-abl	POLR2A	
GSM167909			
8	None	MED1	
GSM167911			
0	LNCaP-abl	MED1	
GSM167911			
1	LNCaP-abl	MED1	
GSM167911			
2	LNCaP-abl	POLR2A	
GSM167911			
3	LNCaP-abl	POLR2A	
GSM167911			
4	LNCaP-abl	PAF1	
GSM167911			
5	LNCaP-abl	SUPT5H	



GSM167911 6	LNCaP- abl	MED1	
GSM167911 8	LNCaP- abl	MED1	
GSM167911 9	LNCaP- abl	MED1	
GSM167912 0	LNCaP- abl	MED1	
GSM167912 4	LNCaP- abl	MED1	
GSM167912 5	LNCaP- abl	MED1	
GSM167912 6	LNCaP- abl	MED1	
GSM167912 7	LNCaP- abl	POLR2A	
GSM167912 8	LNCaP- abl	POLR2A	
GSM167912 9	LNCaP- abl	POLR2A	
GSM167913 0	LNCaP- abl	POLR2A	
GSM167913 1	LNCaP- abl	POLR2A	
GSM167913 2	LNCaP- abl	POLR2A	
GSM167913 3	LNCaP- abl	POLR2A	
GSM167913 4	LNCaP- abl	POLR2A	
GSM167913 6	LNCaP- abl	POLR2A	
GSM182483 4	LNCaP	CHD1	
GSM182483 6	LNCaP	KDM1A	
GSM182483 8	LNCaP	KDM1A	
GSM184736 5	LNCaP- abl	POLR2A	
GSM184736 6	LNCaP- abl	POLR2A	
GSM184736 7	LNCaP- abl	POLR2A	
GSM184736 8	LNCaP- abl	POLR2A	
GSM184736 9	LNCaP- abl	POLR2A	
GSM184737 0	LNCaP- abl	MED1	
GSM184737 1	LNCaP- abl	MED1	
GSM184737 2	LNCaP- abl	MED1	
GSM184737 3	LNCaP- abl	MED1	
GSM184737 4	LNCaP- abl	MED1	
GSM187304 6	LNCaP	CREB1	
GSM187304 5	LNCaP	CREB1	

GSM187304			
4	LNCaP	FOXA1	
GSM187304			
3	LNCaP	FOXA1	
GSM187304			
2	LNCaP	CREB1	
GSM187304			
1	LNCaP	CREB1	
GSM187304			
0	LNCaP	FOXA1	
GSM187303			
9	LNCaP	FOXA1	
GSM153843			
1	LNCaP	CREB1	
GSM153843			
0	LNCaP	FOXA1	
GSM153842			
9	LNCaP	CREB1	
GSM169116			
5	LNCaP	FOXA1	
GSM169116			
4	LNCaP	FOXA1	
GSM169116			
1	DU145	GATA2	
GSM169116			
0	DU145	AR	
GSM169115			
8	LNCaP	GATA2	
GSM169115			
7	LNCaP	FOXA1	
GSM169115			
6	LNCaP	AR	
GSM169115			
5	LNCaP	GATA2	
GSM169115			
4	LNCaP	FOXA1	
GSM169115			
3	LNCaP	AR	
GSM169115			
2	LNCaP	GATA2	
GSM169115			
1	LNCaP	FOXA1	
GSM169115			
0	LNCaP	AR	
GSM169114			
9	LNCaP	GATA2	
GSM169114			
8	LNCaP	FOXA1	
GSM169114			
7	LNCaP	AR	
GSM169114			
6	LNCaP	GATA2	
GSM169114			
5	LNCaP	GATA2	
GSM169114			
4	LNCaP	GATA2	
GSM169114			
3	LNCaP	GATA2	
GSM169114			
2	LNCaP	FOXA1	
GSM169114			
1	LNCaP	AR	

GSM169114			
0	LNCaP	AR	
GSM169113			
9	LNCaP	AR	
GSM169113			
8	LNCaP	AR	
GSM158667			
5	C4-2	POLR2A	
GSM158667			
4	C4-2	POLR2A	
GSM158667			
3	C4-2	POLR2A	
GSM158667			
2	C4-2	POLR2A	
GSM158666			
5	LNCaP	AR	
GSM158666			
4	LNCaP	AR	
GSM158666			
3	LNCaP	AR	
GSM158666			
2	LNCaP	AR	
GSM158666			
1	C4-2	AR	
GSM158666			
0	C4-2	AR	
GSM158665			
9	C4-2	AR	
GSM158665			
8	C4-2	AR	
GSM190539			
3	C4-2	POLR2A	
GSM190539			
2	C4-2	POLR2A	
GSM190539			
1	C4-2	POLR2A	
GSM190539			
0	C4-2	POLR2A	
GSM184341			
6	C4-2	POLR2A	
GSM184341			
5	C4-2	POLR2A	
GSM184341			
4	C4-2	POLR2A	
GSM184341			
3	C4-2	POLR2A	
GSM184341			
2	C4-2	AR	
GSM184341			
1	C4-2	AR	
GSM184341			
0	C4-2	AR	
GSM184340			
9	C4-2	AR	
GSM205889			
7	LNCaP	POU2F1	
GSM205889			
6	LNCaP	POU2F1	
GSM205889			
4	LNCaP	AR	
GSM205889			
3	LNCaP	AR	

GSM205889	2	LNCaP	FOXA1
GSM205889	0	VCaP	POU2F1
GSM205888	9	VCaP	POU2F1
GSM205888	8	VCaP	POU2F1
GSM205888	7	VCaP	FOXA1
GSM205888	6	VCaP	FOXA1
GSM205888	4	LNCaP	POU2F1
GSM205888	3	LNCaP	POU2F1
GSM205888	2	LNCaP	POU2F1
GSM205888	0	VCaP	AR
GSM205887	9	VCaP	AR
GSM186887	5	C4-2B	POLR2A
GSM186887	4	C4-2B	POLR2A
GSM186886	7	C4-2B	AR
GSM186886	6	C4-2B	AR
GSM186886	3	C4-2B	AR
GSM186886	2	C4-2B	AR
GSM169790	3	LNCaP	TRIM24
GSM169790	2	LNCaP	TRIM24
GSM169790	1	LNCaP	TRIM24
GSM208631	6	VCaP	ERG
GSM208631	5	VCaP	ERG
GSM208631	4	VCaP	ERG
GSM208631	3	VCaP	ERG
GSM208631	2	VCaP	ERG
GSM208631	1	VCaP	ERG
GSM208631	0	VCaP	ERG
GSM208630	9	VCaP	ERG
GSM208630	8	VCaP	AR
GSM208630	7	VCaP	AR
GSM208630	6	VCaP	AR

GSM208630			
5	VCaP	AR	
GSM208630			
4	VCaP	AR	
GSM208630			
3	VCaP	AR	
GSM208630			
2	VCaP	AR	
GSM208630			
1	VCaP	AR	
GSM208630			
0	VCaP	AR	
GSM208629			
9	VCaP	AR	
GSM208629			
8	VCaP	AR	
GSM208629			
7	VCaP	AR	
GSM208629			
6	VCaP	AR	
GSM208629			
5	VCaP	AR	
GSM208629			
4	VCaP	AR	
GSM208629			
3	VCaP	AR	
GSM208629			
2	VCaP	AR	
GSM208629			
1	VCaP	AR	
GSM186300			
5	LNCaP	FOXA1	
GSM186850			
2	LNCaP	CHD4	
GSM186850			
1	LNCaP	CHD1	
GSM186849			
7	LNCaP	SMARCA4	
GSM186849			
5	LNCaP	SMARCA5	
GSM189183			
2	LNCaP	FOXA1	
GSM189183			
0	LNCaP	FOXA1	
GSM223569			
3	VCaP	CTCF	
GSM223569			
2	VCaP	CTCF	
GSM223569			
1	VCaP	CTCF	
GSM223569			
0	VCaP	CTCF	
GSM223568			
9	VCaP	AR	
GSM223568			
8	VCaP	AR	
GSM223568			
7	VCaP	AR	
GSM223568			
6	VCaP	AR	
GSM218646			
6	LNCaP	AR	

GSM218646			
5	LNCaP	AR	
GSM218646			
4	LNCaP	AR	
GSM218646			
3	LNCaP	AR	
GSM218646			
2	LNCaP	AR	
GSM218646			
1	LNCaP	AR	
GSM221988			
5	LNCaP	RELA	
GSM221988			
4	LNCaP	RELA	
GSM221988			
3	LNCaP	RELA	
GSM221988			
2	LNCaP	RELA	
GSM221988			
1	LNCaP	RELA	
GSM221988			
0	LNCaP	RELA	
GSM221987			
9	LNCaP	RELA	
GSM221987			
8	LNCaP	RELA	
GSM221987			
5	LNCaP	PIAS1	
GSM221987			
4	LNCaP	PIAS1	
GSM221987			
3	LNCaP	PIAS1	
GSM221987			
2	LNCaP	PIAS1	
GSM221987			
1	LNCaP	PIAS1	
GSM221987			
0	LNCaP	PIAS1	
GSM221986			
9	LNCaP	PIAS1	
GSM221986			
8	LNCaP	PIAS1	
GSM221986			
7	LNCaP	FOXA1	
GSM221986			
6	LNCaP	FOXA1	
GSM221986			
5	LNCaP	FOXA1	
GSM221986			
4	LNCaP	FOXA1	
GSM221986			
3	LNCaP	FOXA1	
GSM221986			
2	LNCaP	FOXA1	
GSM221986			
1	LNCaP	FOXA1	
GSM221986			
0	LNCaP	FOXA1	
GSM221985			
9	LNCaP	AR	
GSM221985			
8	LNCaP	AR	

GSM221985			
7	LNCaP	AR	
GSM221985			
6	LNCaP	AR	
GSM221985			
5	LNCaP	AR	
GSM221985			
4	LNCaP	AR	
GSM221985			
3	LNCaP	AR	
GSM221985			
2	LNCaP	AR	
GSM221985			
1	LNCaP	RELA	
GSM221985			
0	LNCaP	RELA	
GSM221984			
9	LNCaP	RELA	
GSM221984			
8	LNCaP	RELA	
GSM193388			
9	LNCaP	NANOG	
GSM193388			
8	LNCaP	NANOG	
GSM193388			
7	LNCaP	NANOG	
GSM193388			
6	LNCaP	NANOG	
GSM193388			
5	LNCaP	NANOG	
GSM189955			
8	VCaP	ERG	
GSM219511			
4	VCaP	EWSR1	
GSM219511			
2	RWPE1	ERG	
GSM219511			
0	RWPE1	ERG	
GSM219510			
8	RWPE1	ERG	
GSM219510			
6	RWPE1	ERG	
GSM219510			
3	RWPE1	ERG	
GSM186849			
9	LNCaP	SMARCA2	
GSM202482			
2	VCaP	SOX9	
GSM242795			
1	None	AR	
GSM242795			
0	None	AR	
GSM242794			
8	None	SRC	
GSM242794			
7	None	SRC	
GSM242794			
5	None	AR	
GSM242794			
4	None	AR	
GSM209284			
5	LNCaP	AR	

GSM209284			
4	LNCaP	AR	
GSM229895			
2	DU145	ETS1	
GSM229895			
1	DU145	ETS1	
GSM242284			
9	None	CHD1	
GSM242284			
8	None	CHD1	
GSM242284			
5	None	CHD1	
GSM242284			
4	None	CHD1	
GSM212280			
5	LNCaP	AR	
GSM212280			
4	LNCaP	AR	
GSM212280			
3	LNCaP	GRHL2	
GSM212280			
2	LNCaP	GRHL2	
GSM137412			
2	PC-3M-luc	KDM1A	
GSM190720			
6	LNCaP	MYC	
GSM190720			
5	LNCaP	MYC	
GSM190720			
4	LNCaP	MYC	
GSM190720			
3	LNCaP	MYC	
GSM190720			
2	LNCaP	AR	
GSM190720			
1	LNCaP	AR	
GSM190720			
0	LNCaP	AR	
GSM190719			
9	LNCaP	AR	
GSM241229			
3	None	AR	
GSM241229			
2	None	AR	
GSM158667			
1	LNCaP	CCNT1	
GSM158667			
0	LNCaP	CCNT1	
GSM158666			
9	C4-2	CCNT1	
GSM158666			
8	C4-2	CCNT1	
GSM158666			
7	C4-2	CCNT1	
GSM158666			
6	C4-2	CCNT1	
GSM186849			
8	LNCaP	SMARCA1	
GSM218724			
8	DU145	ZMYND8	
GSM218724			
6	DU145	ZMYND8	



GSM229895		ZMYND1	
0	DU145	1	
GSM227716		FOXA1	
0	22RV1		
GSM230296		AR	
8	LNCaP		
GSM257912		BMI1	
1	C4-2		
GSM257912		AR	
2	C4-2		
GSM239382		AR	
9	LNCaP		
GSM261244		ERF	
8	VCaP		
GSM261244		ERF	
9	VCaP		
GSM235045		BRD4	
4	C4-2		
GSM235045		BRD4	
3	C4-2		
GSM235045		BRD4	
0	C4-2		
GSM235045		BRD4	
1	C4-2		
GSM290953		POLR2A	
7	C4-2B		
GSM290953		ZFX	
6	PrEC		
GSM239384		AR	
1	LNCaP		
GSM239384		AR	
3	LNCaP		
GSM230296		AR	
5	LNCaP		
GSM230296		AR	
4	LNCaP		
GSM230296		AR	
7	LNCaP		
GSM271692		AR	
1	LNCaP		
GSM271692		AR	
3	LNCaP		
GSM272973		AR	
3	R1-D567		
GSM272973		AR	
0	R1-D567		
GSM227715		HNF4G	
3	LNCaP		
GSM227715		FOXA1	
0	LNCaP		
GSM198141		H2AZ	
3	PrEC		
GSM198141		H2AZ	
5	LNCaP		
GSM198141		H2AZ	
4	PrEC		
GSM198141		H2AZ	
6	LNCaP		
GSM212257		AR	
9	LNCaP-abl		
GSM253721		HOXB13	
5	22RV1		

GSM253721			
4	22RV1	HOXB13	
GSM253721			
7	22RV1	FOXA1	
GSM227715			
9	22RV1	AR	
GSM227715			
8	22RV1	AR	
GSM227715			
1	LNCaP	FOXA1	
GSM227715			
7	LNCaP	HNF4G	
GSM227715			
6	LNCaP	HNF4G	
GSM248081			
2	LNCaP	FOXA1	
GSM248081			
3	LNCaP	FOXA1	
GSM248081			
0	LNCaP	SMARCA4	
GSM248081			
1	LNCaP	SMARCA4	
GSM248081			
6	LNCaP	HOXB13	
GSM248081			
7	LNCaP	HOXB13	
GSM248081			
4	LNCaP	FOXA1	
GSM248081			
5	LNCaP	FOXA1	
GSM248081			
8	LNCaP	HOXB13	
GSM248081			
9	LNCaP	HOXB13	
GSM253722			
8	VCaP	FOXA1	
GSM253722			
9	VCaP	FOXA1	
GSM253722			
5	VCaP	FOXA1	
GSM253722			
6	VCaP	FOXA1	
GSM253722			
7	VCaP	FOXA1	
GSM253721			
6	22RV1	FOXA1	
GSM248083			
0	LNCaP	WDHD1	
GSM248083			
1	LNCaP	WDHD1	
GSM248083			
2	LNCaP	WDHD1	
GSM248083			
3	LNCaP	WDHD1	
GSM272972			
9	R1-D567	POLR2A	
GSM274176			
8	C4-2B	ZFX	
GSM239383			
9	LNCaP	AR	
GSM239383			
1	LNCaP	AR	

GSM239383			
3	LNCaP	AR	
GSM239383			
5	LNCaP	AR	
GSM239383			
7	LNCaP	AR	
GSM261245			
1	VCaP	ERF	
GSM261245			
0	VCaP	ERF	
GSM261245			
7	VCaP	ERG	
GSM261245			
6	VCaP	AR	
GSM235044			
9	C4-2	BRD4	
GSM235044			
8	C4-2	BRD4	
GSM235044			
5	C4-2	BRD4	
GSM235044			
7	C4-2	BRD4	
GSM235044			
6	C4-2	BRD4	
GSM235045			
2	C4-2	BRD4	
GSM271691			
7	LNCaP	AR	
GSM271691			
9	LNCaP	AR	
GSM277159			
6	LREX'	BRD4	
GSM277159			
7	LREX'	BRD4	
GSM227716			
1	22RV1	FOXA1	
GSM227716			
6	22RV1	HNF4G	
GSM212258			
1	LNCaP-abl	AR	
GSM212258			
0	LNCaP-abl	AR	
GSM227714			
8	LNCaP	AR	
GSM227714			
9	LNCaP	HNF4G	
GSM253721			
8	LNCaP	HOXB13	
GSM253721			
3	22RV1	AR	
GSM253721			
2	22RV1	AR	
GSM274176			
9	C4-2B	ZFX	
GSM248080			
1	LNCaP	AR	
GSM248080			
0	LNCaP	AR	
GSM248080			
2	LNCaP	AR	
GSM248080			
5	LNCaP	ARID1A	

GSM248080			
4	LNCaP	ARID1A	
GSM248080			
7	LNCaP	ARID1A	
GSM248080			
6	LNCaP	ARID1A	
GSM248080			
9	LNCaP	SMARCA4	
GSM248080			
8	LNCaP	SMARCA4	
GSM227716			
7	22RV1	HNFB4G	
GSM253723			
3	VCaP	HOXB13	
GSM253723			
2	VCaP	HOXB13	
GSM253723			
1	VCaP	HOXB13	
GSM253723			
0	VCaP	FOXA1	
GSM253723			
5	VCaP	HOXB13	
GSM253723			
4	VCaP	HOXB13	
GSM248082			
8	LNCaP	TRIM28	
GSM248082			
3	LNCaP	TLE3	
GSM248082			
2	LNCaP	TLE3	
GSM248082			
0	LNCaP	HOXB13	
GSM248082			
7	LNCaP	TRIM28	
GSM248082			
6	LNCaP	TRIM28	
GSM248082			
5	LNCaP	TLE3	
GSM248082			
4	LNCaP	TLE3	
GSM246379			
6	LNCaP	MTOR	
GSM230525			
5	LNCaP	MYC	
GSM230525			
4	LNCaP	MYC	
GSM230525			
3	LNCaP	MYC	
GSM230525			
2	LNCaP	MYC	
GSM230525			
1	LNCaP	MYC	