

1 Full title (<250 chars): **Respiratory virus concentrations in human excretions that**
2 **contribute to wastewater: A systematic review**
3 Short title (<100 chars): **A systematic review of respiratory virus concentrations in**
4 **excretions found in wastewater**

5
6 Sarah A. Lowry^a, Marlene K. Wolfe^b, Alexandria B. Boehm^a

7
8 a. Department of Civil and Environmental Engineering, Stanford University, 473 Via
9 Ortega, Stanford, California 94305, United States

10 b. Gangarosa Department of Environmental Health, Rollins School of Public Health,
11 Emory University, 1518 Clifton Rd., Atlanta, Georgia 30322, United States

12
13 **Abstract**

14 Concentrations of nucleic acids from a range of respiratory viruses including human
15 influenza A and B, respiratory syncytial virus (RSV), metapneumovirus, parainfluenza
16 virus, rhinovirus, and seasonal coronaviruses in wastewater solids collected from
17 wastewater treatment plants correlate to clinical data on disease occurrence in the
18 community contributing to the wastewater. Viral nucleic acids enter wastewater from
19 various excretions including stool, urine, mucus, sputum, and saliva deposited in toilets
20 or other drains in buildings. In order to relate the measured concentrations in
21 wastewater at a treatment plant to actual number of infections in a community,
22 concentrations of the viral nucleic acids in these human excretions are needed as inputs
23 to a mass balance model. In this study, we carried out a systematic review and meta-
24 analysis to characterize the concentrations and presence of influenza A and B,
25 respiratory syncytial virus (RSV), metapneumovirus, parainfluenza virus, rhinovirus, and
26 seasonal coronaviruses in stool, urine, mucus, sputum, and saliva. The systematic
27 review protocol can be accessed at <https://doi.org/10.17605/OSF.IO/ESVYC>. We
28 identified 220 data sets from 50 unique articles that met inclusion criteria and reported
29 information on viral concentrations and presence in these excretions. Data were
30 unevenly distributed across virus type (with the most available for influenza) and
31 excretion type (with the most available for respiratory excretions). The majority of data
32 sets only reported the presence or absence of the virus in an excretion in a cross-
33 sectional study design. There is a need for more concentration data, including
34 longitudinal data, across all respiratory virus and excretion types. Such data would allow
35 quantitatively linking virus wastewater concentrations to numbers of infected individuals.

36

37
38
39
40
41
42
43
44
45
46
47
48
49
50
51
52
53
54
55
56
57
58
59
60
61
62
63
64
65
66
67
68
69
70
71
72
73
74
75
76

Introduction

Respiratory viruses are responsible for millions of infections around the world each year. In 2019, acute lower respiratory infections were the leading cause of death globally in children under five years old (1). Several key viruses are responsible for the majority of respiratory viral infections: human rhinovirus, human parainfluenza viruses 1, 2, 3, and 4, influenza viruses A and B, respiratory syncytial virus (RSV), metapneumovirus, human coronaviruses 229E, HKU1, OC43, and NL63, adenovirus, human bocavirus, and non-rhinovirus enterovirus (2). For example, human rhinoviruses are the most significant causes of the common cold, influenza A and B viruses cause annual epidemics, and RSV and metapneumovirus are estimated to have infected almost all children by the time they reach the age of five (3). Additionally, the recent SARS-CoV-2 pandemic has underscored the public health threat that respiratory viruses pose.

The detection of SARS-CoV-2 RNA in wastewater has led to the rapid growth of wastewater-based epidemiology (WBE) as a tool to aid public health officials in identifying population-level trends throughout the SARS-CoV-2 pandemic. More recently, wastewater surveillance of RSV (4) and influenza (5) has been shown to be strongly correlated with the clinical incidence of these diseases. Additionally, rhinovirus (6), parainfluenza viruses, metapneumovirus, and seasonal coronaviruses 229E, HKU1, OC43, and NL63 have all been detected in wastewater where they are correlated to clinical measures of disease occurrence (7), indicating that wastewater surveillance of respiratory viruses may be a viable tool for public health officials to implement alongside conventional surveillance methods.

While WBE is useful in identifying community-level trends in infections, there is a lack of information on how to translate viral nucleic-acid concentrations measured in wastewater directly to aggregated case numbers. The ability to make this translation would significantly increase the power of WBE by enabling one to estimate disease occurrence directly from wastewater. Many factors and variables influence the potential translation from viral nucleic acid quantities in wastewater to the number of cases (5,8), but perhaps one of the variables with the most uncertainty is the virus concentration in human excretions that contribute to wastewater. These excretions include not only stool and urine but also mucus, saliva, and sputum. Thus, the aim of this systematic review is to characterize respiratory virus concentrations in excretions that contribute to wastewater and identify critical knowledge gaps for further research. Here, we present a characterization of respiratory virus concentration and presence across excretion types from studies examining subjects with respiratory virus infections.

77 **Methods**

78

79 *Systematic Review*

80 The systematic review followed PRISMA guidelines (9). This review aimed to gather
81 and synthesize the existing literature on shedding patterns and concentrations of
82 respiratory viruses in the various excretions that contribute to wastewater. The
83 respiratory viruses included in this review were human rhinovirus, human parainfluenza
84 viruses 1, 2, 3, and 4, influenza viruses A and B, respiratory syncytial virus (RSV),
85 metapneumovirus, and human coronaviruses 229E, HKU1, OC43, and NL63. The
86 excretions considered in the review were mucus, saliva, sputum, urine, and stool. The
87 primary goal of the review was to compile concentrations, in units of virus or viral
88 genomes or viral genes per mass or volume of excretion, of respiratory viruses
89 measured in stool, urine, sputum, mucus, and saliva.

90

91 The review protocol for this systematic review can be found at
92 <https://doi.org/10.17605/OSF.IO/ESVYC> (10). Searches were conducted for each
93 respiratory virus between June and August 2022 in the following three databases: Web
94 of Science (search field = topic), PubMed (search field = title/abstract), and Scopus
95 (search field = title/abstract/keywords). The search string consisted of two fields. The
96 first field was the name of the respiratory virus and any common variations or
97 abbreviations of that name, and the second field contained the list of excretions of
98 interest. The first field changed for each respiratory virus and is shown in Table 1. The
99 second field remained constant for each respiratory virus and was as follows: (urine OR
100 feces OR faeces OR fecal OR stool OR sputum OR mucus OR saliva). Once searches
101 were conducted, records were uploaded into Covidence, a web-based software platform
102 made for systematic and literature reviews (11). In Covidence, records were
103 deduplicated, screened, and extracted for data analysis. The inclusion criteria were as
104 follows: each record had to (1) be published in English, (2) be published in a peer-
105 reviewed journal, (3) contain primary data (i.e. not reviews), (4) contain extractable
106 shedding data, where “shedding data” is defined as measured concentrations or
107 presences of viruses or their genetic material in urine, stool, sputum (including
108 expectorated and induced sputum), mucus (including nasal and nasopharyngeal
109 aspirates), or saliva; data had to be from direct excretion measurements and not from
110 areas of the body that generate excretions (e.g. swabs and lavages) and concentrations
111 had to be presented in externally valid units (some measure of virus numbers per
112 volume or mass of excretion and not per mass or volume of nucleic-acid or nucleic acid
113 extract, viral transport media, or other media), (5) contain shedding data from humans,
114 and (6) contain shedding data from subjects infected with the virus of interest or with
115 respiratory and/or gastrointestinal symptoms and not related to a chronic health
116 condition (i.e. COPD, cystic fibrosis). Inclusion criteria were chosen to ensure only

117 credible and original data relevant to the aim of this systematic review were eligible for
 118 inclusion. First articles were screened using their title and abstract and if deemed to
 119 potentially fit the inclusion criteria, they were subject to full text review. Articles that fit
 120 the inclusion criteria passed full text review and were included in the systematic review.

121

122 Table 1. Search terms for each respiratory virus and the date searched for each
 123 respiratory virus. Date is in MM/DD/YY format.

Respiratory Virus	Search terms	Date Searched
Rhinovirus	rhinovirus* OR HRV*	06/22/22
Human Parainfluenza Viruses 1, 2, 3, and 4	parainfluenza* OR HPIV* OR PIV	07/13/22
Influenza A and B	"influenza A" OR "influenzavirus A" OR "type A influenza" OR IAV OR "A flu" OR "flu A" OR "influenza B" OR "influenzavirus B" OR "type B influenza" OR IBV OR "B flu" OR "flu B"	07/20/22
Respiratory Syncytial Virus	RSV OR "respiratory syncytial virus" OR "human orthopneumovirus"	07/28/22
Human Metapneumovirus	metapneumovirus* OR "human metapneumovirus" OR hMPV OR HMPV OR MPV	08/25/22
Human Coronaviruses 229E, HKU1, NL64, and OC43	"human coronavirus 229E" OR HCoV-229E OR "HCoV 229E" OR 229E OR "human coronavirus NL63" OR HCoV-NL63 OR "HCoV NL63" OR NL63 OR "human coronavirus OC43" OR HCoV-OC43 OR "HCoV OC43" OR OC43 OR "human coronavirus HKU1" OR HCoV-HKU1 OR "HCoV HKU1" OR HKU1	08/29/22

124

125 The following data were extracted from each paper found to fit the inclusion criteria by
 126 an independent author. First, we noted whether data were obtained using a cross-
 127 sectional study design (many individuals sampled each one time), or a longitudinal
 128 study design (one or more individuals with samples collected at more than one time
 129 point post infection onset); we also noted when in some cases, a cross sectional study
 130 incidentally sampled one or more individuals more than once. Second, we noted the
 131 virus type and subtype if applicable, virus detection method, and excretion type. Third,
 132 we extracted from the publication the concentrations of the virus measured in the

133 excretions as well as any information about the time point in the infection of the
134 individual. Fourth, if concentrations were not reported, we noted whether excretions
135 were positive for the virus (positivity rates), as well as any information about the time
136 point in the infection of the individual. A positivity rate was defined in this review as the
137 number of samples that tested positive for the respiratory virus divided by the total
138 number of samples tested (i.e. a positivity rate of 10/20 means out of 20 samples taken,
139 10 tested positive and 10 tested negative for the presence of the virus). In some cases,
140 information about concentrations or positivity rates were provided as only summary
141 statistics by authors and in those cases, those were extracted and the type of summary
142 statistic was noted. If a study reported shedding data only in a graphical format,
143 WebPlotDigitizer (12) was used for data extraction.

144

145 *Meta-analysis*

146 Data sets from longitudinal and cross sectional studies were reported separately for
147 both positivity rates and concentrations. For each data set, the population studied was
148 categorized as (1) subjects with confirmed infections of the respiratory virus in question,
149 or (2) subjects without confirmed infections but with respiratory and/or gastrointestinal
150 symptoms. A confirmed infection was defined as the positive detection of the virus in at
151 least one clinical sample out of at least two paired samples (for example, if considering
152 positivity rates in stool in a study that examined stool and nasal swabs, confirmed
153 infections were individuals with positive stool samples, nasal swabs, or both).

154

155 Data sets from studies with subjects without confirmed infections but with respiratory
156 and/or gastrointestinal symptoms were used to supplement the primary analysis that
157 focused on subjects with confirmed infections. These data sets were supplementary
158 because subjects without confirmed infections but with symptoms may not have been
159 infected with a viral pathogen rather than infected with a viral pathogen but not shedding
160 that pathogen in excretions, and thus were considered separately than data sets of
161 subjects with confirmed infections. These data sets of subjects without confirmed
162 infections were used to provide evidence that viral shedding is possible in excretions
163 that were not examined by data sets of subjects with confirmed infections.

164

165 Reported concentrations of viruses were represented graphically for comparison among
166 different data sets and types of excretions. Concentrations from cross-sectional studies
167 were graphed separately from concentrations from longitudinal studies. Positivity rates
168 from longitudinal studies were reported individually and separately from positivity rates
169 from cross-sectional studies. Positivity rates from cross-sectional studies for each
170 excretion type were combined across data sets using a weighted average. The
171 weighted average was calculated in the statistical computing program R (13) using the
172 following formula: $\frac{\Sigma \text{positive samples}}{\Sigma \text{total samples}}$ where the numerator represents the sum of positive

173 samples across relevant data sets and the denominator represents the sum of all
174 samples tested across relevant data sets. We tested whether the excretion positivity
175 rates were the same within viruses using either a chi-square test for non-sparse data
176 (i.e. 20% or less of values in the table were less than 5) or a Fisher's exact test for
177 sparse data (i.e. more than 20% of values in the table were less than 5). We completed
178 the statistics using RStudio (version 2022.07.1) using R (version 4.1.2) (13), as pre-
179 specified in the protocol registration. While some data points were correlated as some
180 excretion samples came from the same subject (e.g. when a study collected paired
181 samples), we were unable to account for correlation in comparing samples across all
182 excretion types. We conducted 6 hypothesis tests and therefore to achieve $\alpha = 0.05$
183 in the hypothesis tests, we used a p value of 0.008 (0.05/6) to adjust for multiple
184 comparisons (Bonferroni correction). All data used in this paper are available publicly
185 through the Stanford Data Repository (<https://doi.org/10.25740/vj779wy5347>).

186

187 **Results**

188

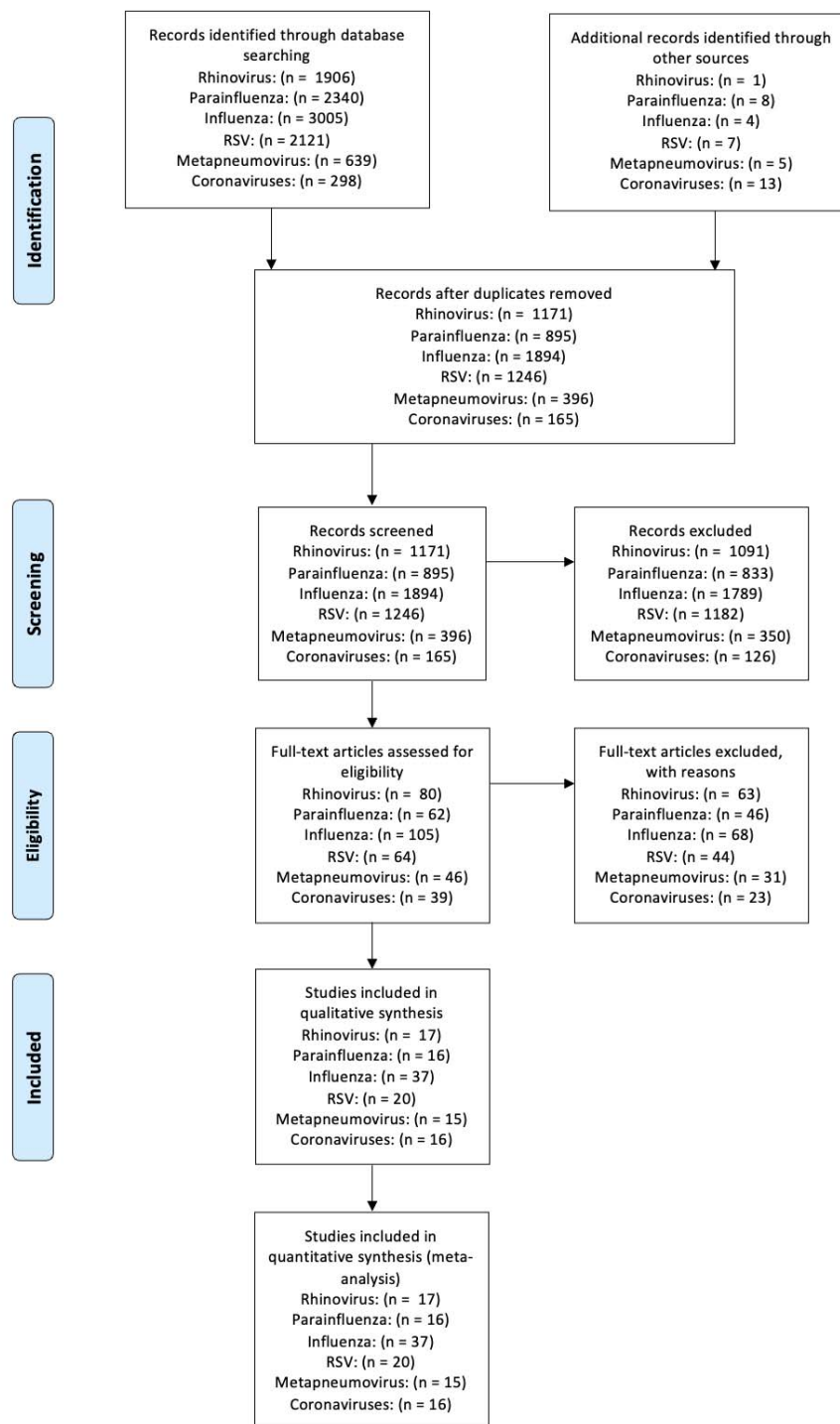
189 *Systematic review results*

190 The search process identified a total of 220 data sets from 50 unique articles published
191 in peer-reviewed journals. Figure 1 shows the search process for each respiratory virus.
192 A data set is defined as concentration or positivity rate data for one virus type (e.g. a
193 study reporting both Influenza A and Influenza B data in an excretion would have two
194 data sets) in a specific excretion. If an article provided data for multiple excretions, then
195 data from each excretion made up a unique data set. Many articles included data on
196 multiple respiratory viruses.

197

198

199



200
201 Figure 1. Modified PRISMA flow diagram showing the results of the systematic review
202 search process.
203

204 **Rhinovirus.** We identified 17 papers (14–30) with data on rhinovirus in excretions of
205 patients; these papers contained 20 rhinovirus data sets. Of the 20 data sets, one

206 reported longitudinal positivity rates, three reported concentrations from cross-sectional
207 studies, and the remaining 16 data sets reported positivity rates from cross-sectional
208 studies that included between three (29) and 312 (26) subjects with confirmed
209 infections. Of the 20 data sets, 15 measured the virus using RT-PCR-based methods
210 (14,15,17,20–30) while the remaining five used cultivation methods (16,18,19).

211
212 The longitudinal data set reported rhinovirus positivity rates in mucus in 26 patients
213 infected with rhinovirus infections over eight weeks (21). The study indicated 26/26
214 (100%) detects on Day 0, 13/26 (50%) detects at two weeks follow up, 1/26 (4%)
215 detects at five weeks follow up, and 0/26 detects at eight weeks follow up.

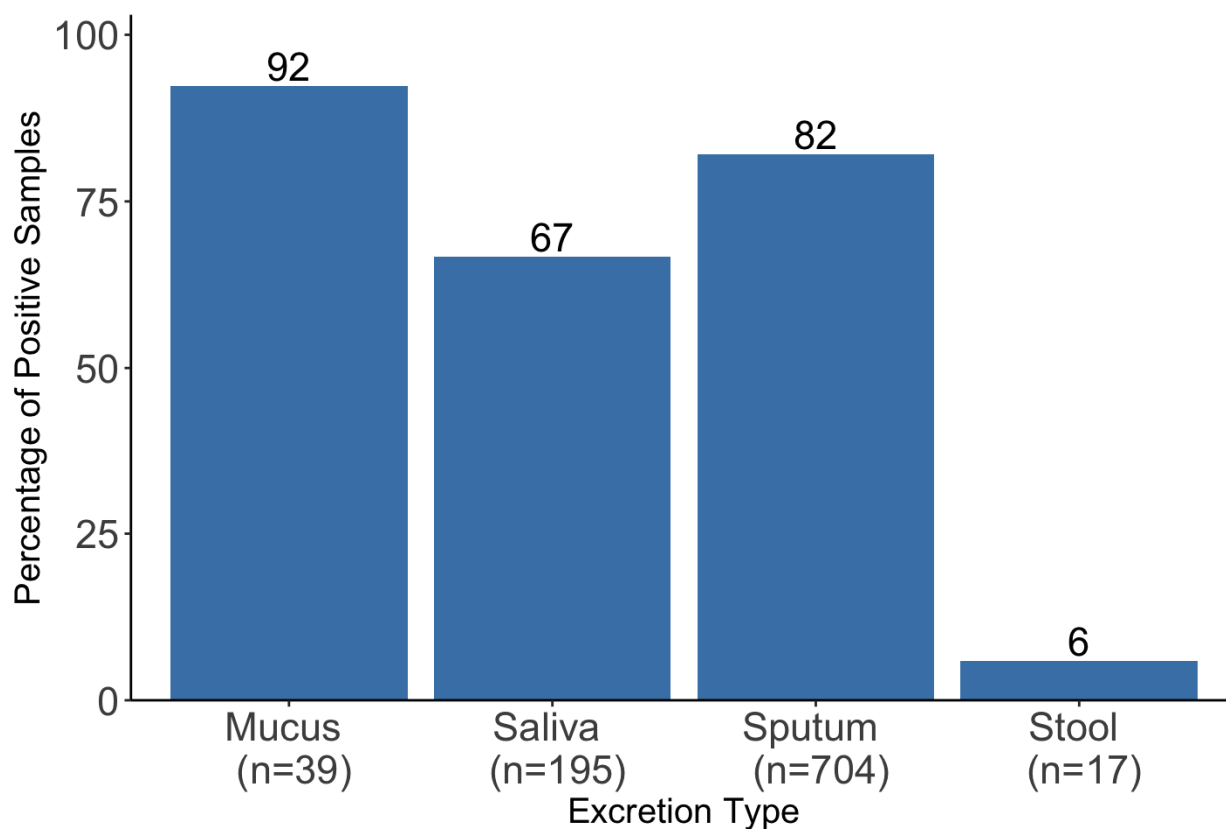
216
217 Only three data sets reported rhinovirus concentrations in excretions; one data set
218 reports only one datapoint and the remaining two report only summary statistics (Table
219 2). Data sets reported a median concentration of on the order of 10^3 genomes per mg
220 stool from 11 subjects, 100 TCID₅₀ (median tissue culture infectious dose) per g stool
221 from one subject, and a geometric mean of on the order of 10 TCID₅₀ per ml saliva from
222 7 subjects. There are too few data to complete a statistics test to compare
223 concentrations across excretions, particularly since most of the studies only reported
224 summary statistics.

225
226 Table 2. Concentrations of rhinovirus reported in excretions. IQR is interquartile range.

Excretion Type	Data Format	Concentration	Units	Number of subjects	Publication
Stool	Median (IQR)	4124 (9117)	genomes/mg	11	Bergallo et al. 2019 (14)
Stool	Single sample	100	TCID ₅₀ /g	1	Cate et al. 1967 (16)
Saliva	Geometric mean	15.85	TCID ₅₀ /mL	7	Gwaltney et al. 1978 (18)

227
228 The weighted average percentage of positive samples identified in each excretion type
229 of subjects with confirmed rhinovirus infections is provided in Figure 2, as calculated
230 from the 16 positivity rate data sets from cross-sectional studies. The highest positivity
231 rate was found in mucus samples, while the lowest was found in stool. No studies of
232 subjects with confirmed infection reported measurements of rhinovirus in urine. Fisher's
233 exact test resulted in a p-value of less than 0.001 rejecting the null hypothesis that
234 positivity rates across excretions are the same.

235
236 Since no urine data was identified in studies conducted with subjects with confirmed
237 rhinovirus infections, we looked at data sets in which rhinovirus was tested in excretions
238 of people with respiratory or gastrointestinal symptoms. None of these data sets
239 reported on rhinovirus in urine (see Supporting Information Table S1).
240



241
242 Figure 2. Weighted Average Percentage of Positive Rhinovirus Detections in Various
243 Excretions of Subjects with Confirmed Rhinovirus Infections. The reported value for n is
244 the total number of samples included in the meta-analysis for each excretion type. The
245 number on top of each bar is the percent of samples positive. No data is reported for
246 urine as no study measured rhinovirus in urine.

247
248
249 **Parainfluenza Virus.** We identified 16 articles (15,19,20,22–34) that reported 32 data
250 sets of parainfluenza virus 1, 2, 3, and/or 4 shedding in excretions in patients. These
251 data sets all measured positivity rates in subjects with confirmed infections in cross-
252 sectional studies that included between one (23–25,28) and 88 (26) subjects. No
253 identified data sets reported parainfluenza virus concentrations in any excretion, and
254 none reported longitudinal shedding data. None of the data sets measured

255 parainfluenza virus in stool or urine. Thirty-one data sets measured parainfluenza virus
256 using RT-PCR assays, and one data set used culture methods (19).

257

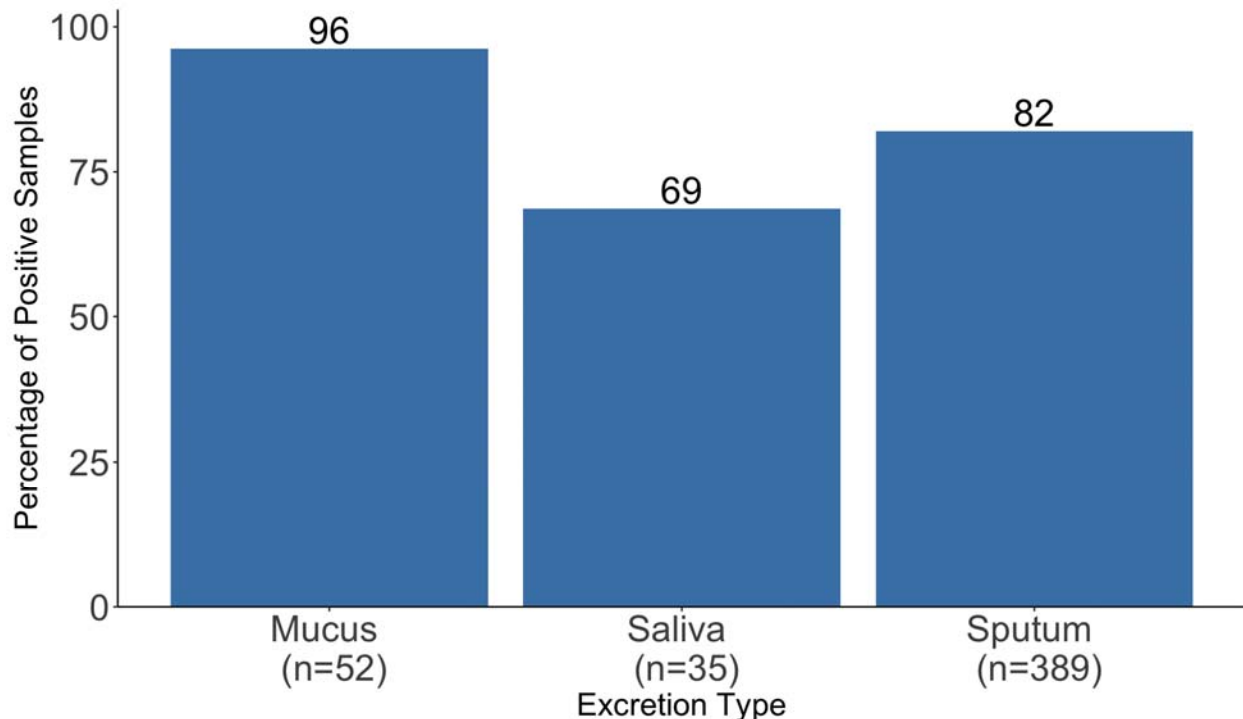
258 For the 32 data sets, some of them differentiated between the types of parainfluenza
259 virus. Seven (7) data sets measured parainfluenza virus 1, six (6) measured
260 parainfluenza virus 2, nine (9) measured parainfluenza virus 3, three (3) measured
261 parainfluenza virus 4, and seven (7) did not specify a single type of parainfluenza virus.
262 See Supporting Information Figure S1 for the weighted average positivity rate by
263 parainfluenza type.

264

265 Positivity rates in mucus, saliva, and sputum are above 60% with the highest positivity
266 rates observed in mucus (Figure 3). Fisher's exact test resulted in a p-value of less than
267 0.001 rejecting the null hypothesis that positivity rates among excretions are the same.

268

269



270

271 Figure 3. Weighted Average Percentage of Positive Parainfluenza Virus Detections in
272 Various Excretions from Subjects with Confirmed Infection. The reported value for n is
273 the number of tests included in the metaanalysis for each excretion type. No data is
274 reported for stool or urine as no study measured parainfluenza virus in stool or urine.
275 The number on top of each bar is the percent of samples positive.

276

277 Since no stool or urine data was identified in studies conducted with subjects with
278 confirmed parainfluenza infections, we examined data sets that tested for parainfluenza

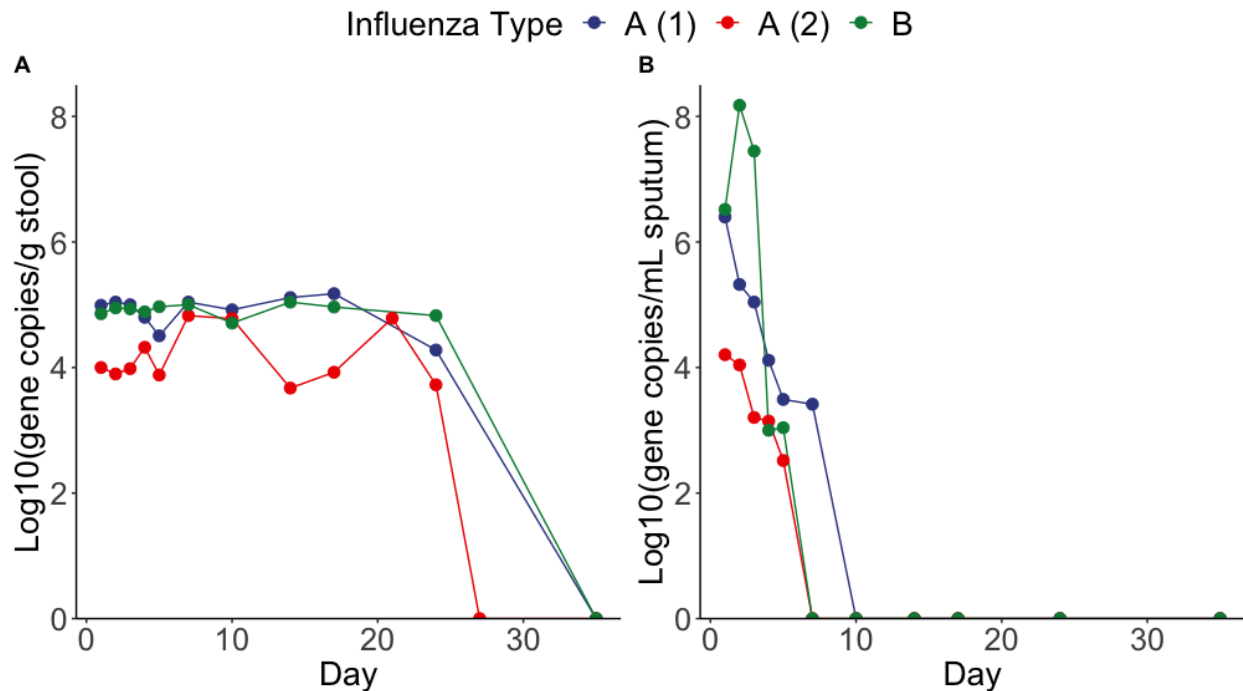
279 virus in the excretions of people with respiratory or gastrointestinal symptoms. One of
280 these data sets reported on parainfluenza virus in stool and reported 1/331 stool
281 samples (0.3%) positive for parainfluenza virus 2, 3, or 4 (the study did not report data
282 on parainfluenza virus 1) (35). None of the data sets measured parainfluenza virus in
283 urine. See Supporting Information Table S2 for additional details of these data sets.

284
285 **Influenza.** We identified 37 articles (15,19,22–34,36–52,52–56) with data on influenza
286 in patient excretions; these articles contained 77 influenza data sets. Seventy-six of the
287 data sets were generated using RT-PCR and the remaining one used culture methods
288 (19). Eight of the 77 data sets reported longitudinal shedding data (of these 8, two
289 reported positivity rates (55), and six reported concentrations (44)), 10 reported
290 concentration data from cross-sectional studies (38,40,41,44), and the remaining 59
291 reported cross-sectional positivity rate data from between one (24,28,45,46) and 120
292 (54) subjects with confirmed influenza infections.

293
294 The two longitudinal data sets reporting positivity rates (one for sputum, one for stool)
295 came from a study that provided the number of days after influenza symptom onset that
296 the excretion first tested positive for Influenza A H7N9: a median of 10.5 days
297 (interquartile range 8.25 - 11.75) for sputum, and a median of seven days (interquartile
298 range 7 - 7.75) for stool (55); overall 10/12 subjects were found to contain influenza A in
299 at least one sputum sample and 6/12 subjects were found to contain influenza A in at
300 least one stool sample.

301
302 The six longitudinal concentration data sets came from a single study (44) that
303 examined the sputum and stool of three patients, two infected with influenza A H3N2
304 and one with influenza B, over 35 days (Table 3). In these patients, influenza was
305 detected in stool through day 24 but was only detected in sputum through day five or 7.
306 Sputum concentrations ranged from 3.3×10^2 copies/mL to 1.5×10^8 copies/mL, while
307 stool concentrations ranged from 4.7×10^3 copies/g to 1.0×10^5 copies/g over time.

308

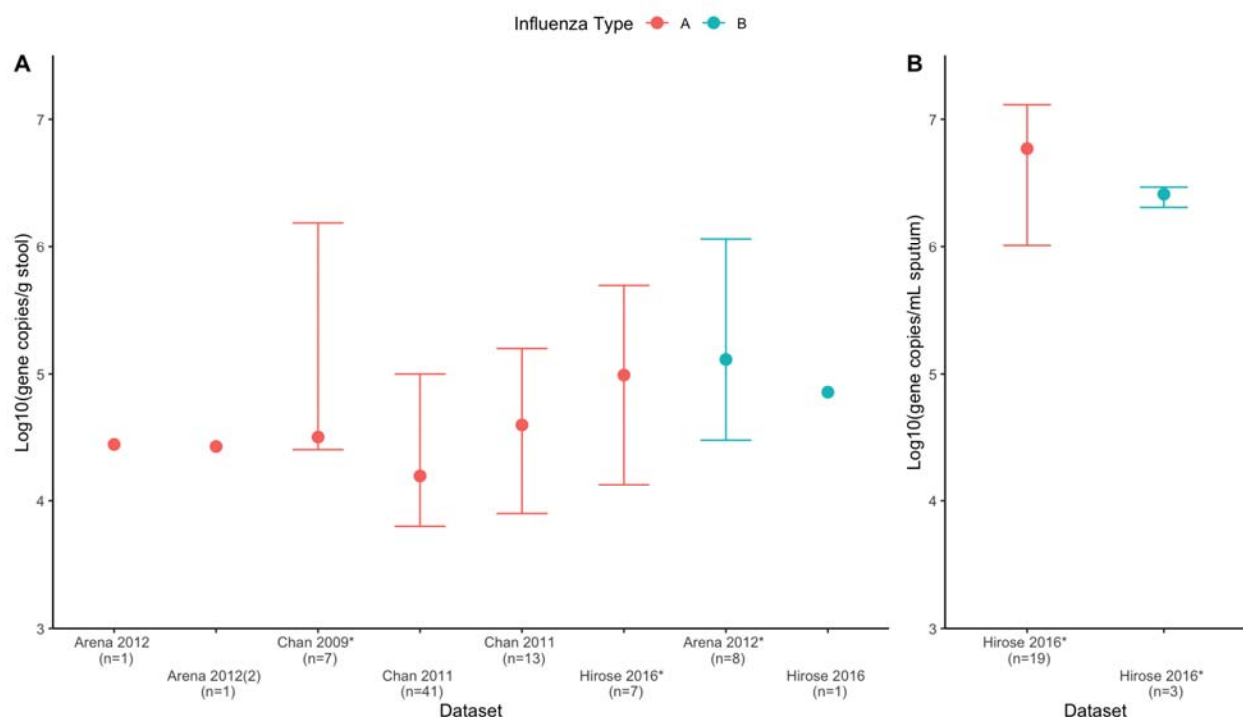


309
 310 Figure 4: Concentrations of influenza measured in stool (A) and sputum (B) in three
 311 patients (two with Influenza A, as indicated by A (1) and A (2), and one with influenza B)
 312 over 35 days, as reported by Hirose et al. (44). A point located at a y-value of 0
 313 represents ND (not detected), indicating the virus was not detected. Concentrations
 314 were reported in copies/mL for sputum and copies/g for stool.

315
 316 Of the 69 cross-sectional data sets, 42 measured influenza A, 21 measured influenza B,
 317 and six did not discern between influenza A and B (19,25,29,30,33,47) (either because
 318 they did not specify which they measured, they measured both types with the same
 319 assay, or they measured both types with separate assays but reported combined
 320 results). The breakdown by type A or B is shown in the concentration data in Figure 5
 321 and in the positivity rate data in Supplementary Information Figure S2. Some of the
 322 cross-sectional data sets additionally specified the influenza A subtype measured:
 323 seven measured influenza A H1N1 (39,41,48,50,52,53), 9 measured influenza A H3N2
 324 (37,41,44), and two measured influenza A H7N9 (56).

325
 326 Of the 10 data sets reporting influenza concentrations measured in cross-sectional
 327 studies, eight measured the concentration of influenza in stool (reported and calculated
 328 medians span 1.6×10^4 to 1.3×10^5 copies/g stool), and two measured the
 329 concentration of influenza in sputum (reported and calculated medians span 2.6×10^6 to
 330 5.9×10^6 copies/mL sputum) (Figure 5). Samples were acquired from patients at a
 331 variety of times post symptom onset (38,40,41,44). Concentrations were measured
 332 using RT-PCR methods. Authors provided summary statistics and point values for 5

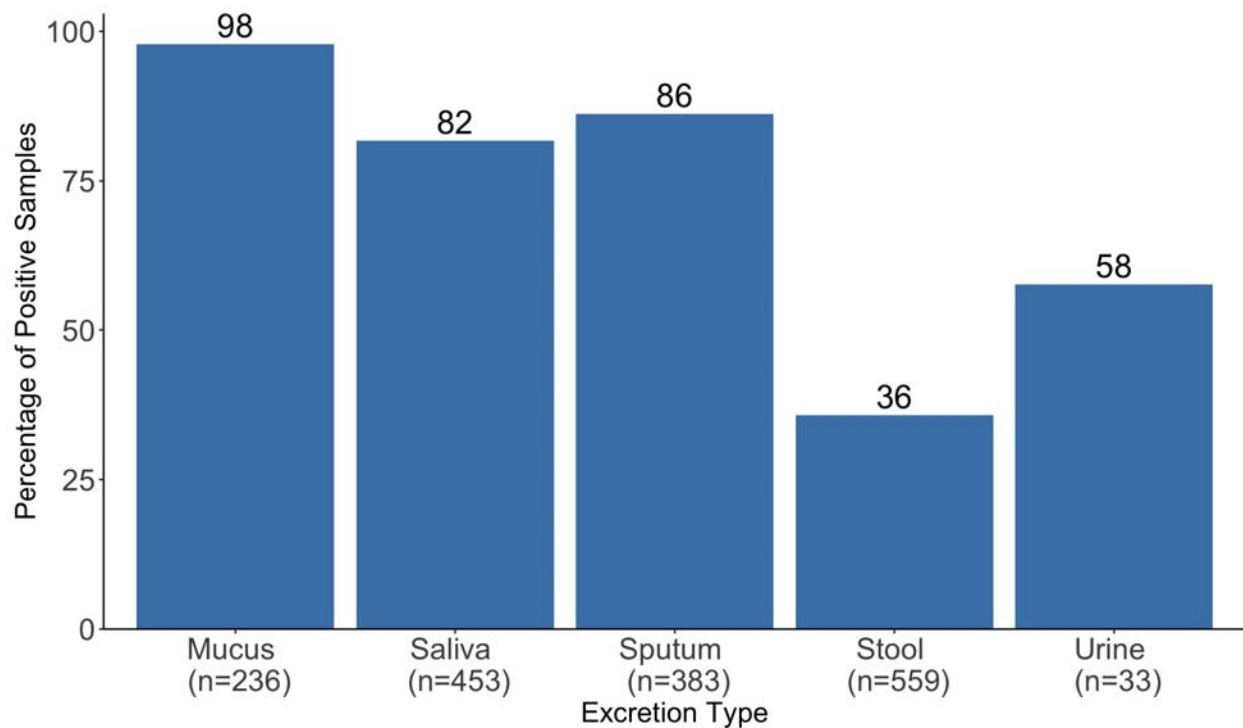
333 datasets (38,41,44), and summary statistics were calculated using data extracted via
334 WebPlotDigitizer (12) for the remaining 5 datasets (38,40,44).
335



336
337 Figure 5. Concentrations of influenza in stool (A) and sputum (B), where points
338 represent medians and bars indicate interquartile range (IQR) (single points indicate
339 only one datapoint reported from data set by study authors). Data in (A) and (B) comes
340 from only cross-sectional studies. Red points represent Influenza A and blue points
341 represent Influenza B. The first author and year is used only to abbreviate the paper
342 author list due to lack of space. There are two data sets from the same paper with the
343 same number of subjects (n); these data sets are delineated by adding a (2) after one of
344 the data sets. The number of subjects (n) for each data set is provided under the data
345 set name. The papers from which these data sets came include Arena et al. (38), Chan
346 et al. (40), Chan et al. (41), and Hirose et al. (44). The * next to the first author and year
347 indicates datasets that display summary statistics that we calculated.

348
349 Figure 6 shows the weighted average positivity rate data from cross-sectional studies
350 separated by excretion type. Positivity rates of mucus, saliva, and sputum were greater
351 than 80% while positivity rates for urine and stool were 58% and 36%, respectively. A
352 chi-square test resulted in a p-value of less than 0.001, rejecting the null hypothesis that
353 positivity rate is the same across excretions. See Supporting Information Table S3 for
354 data sets of subjects without confirmed influenza infections.

355



356
357 Figure 6. Weighted Averages for Percentage of Positive Influenza Virus A or B
358 Detections in Various Excretions from Subjects with Confirmed Infection. The reported
359 value for n is the number of samples included in the weighted average for each
360 excretion type. The number on top of each bar is the percent of samples positive.

361
362 **Respiratory Syncytial Virus (RSV).** We identified 20 studies containing 28 data sets
363 with information on the shedding of RSV in excretions of subjects. One data set
364 reported longitudinal positivity rates, one data set reported concentrations of RSV in
365 excretions from a cross-sectional study (specifically in mucus, Table 3), and the
366 remaining 26 reported positivity rate data from cross-sectional studies with between one
367 (23) and 323 (26) subjects with confirmed RSV infections. Two data sets measured
368 RSV A, three data sets measured RSV B, and the remaining 23 did not specify a type of
369 RSV in their analyses. Twenty-eight of the data sets were generated using RT-PCR and
370 the remaining one used culture methods (19).

371
372 The longitudinal data set reported the percent of RSV detections in mucus from 38
373 subjects over 27 days, with RSV detected in 38/38 (100%) of subjects on day 0, 20/38
374 (53%) of subjects on days 5-13, 9/34 (26%) of subjects on days 12-20, and 7/34 (21%)
375 on days 18-27 (57).

376
377 One data set (58) measured RSV concentrations in 138 samples of mucus from 31
378 mechanically ventilated infants (Table 3) in a cross sectional study. Concentrations
379 were measured using RT-PCR. The authors of the study use the term “particles” in

380 reporting units, which is assumed to mean virus. Summary statistics were calculated
381 from data extracted using WebPlotDigitizer (12).

382

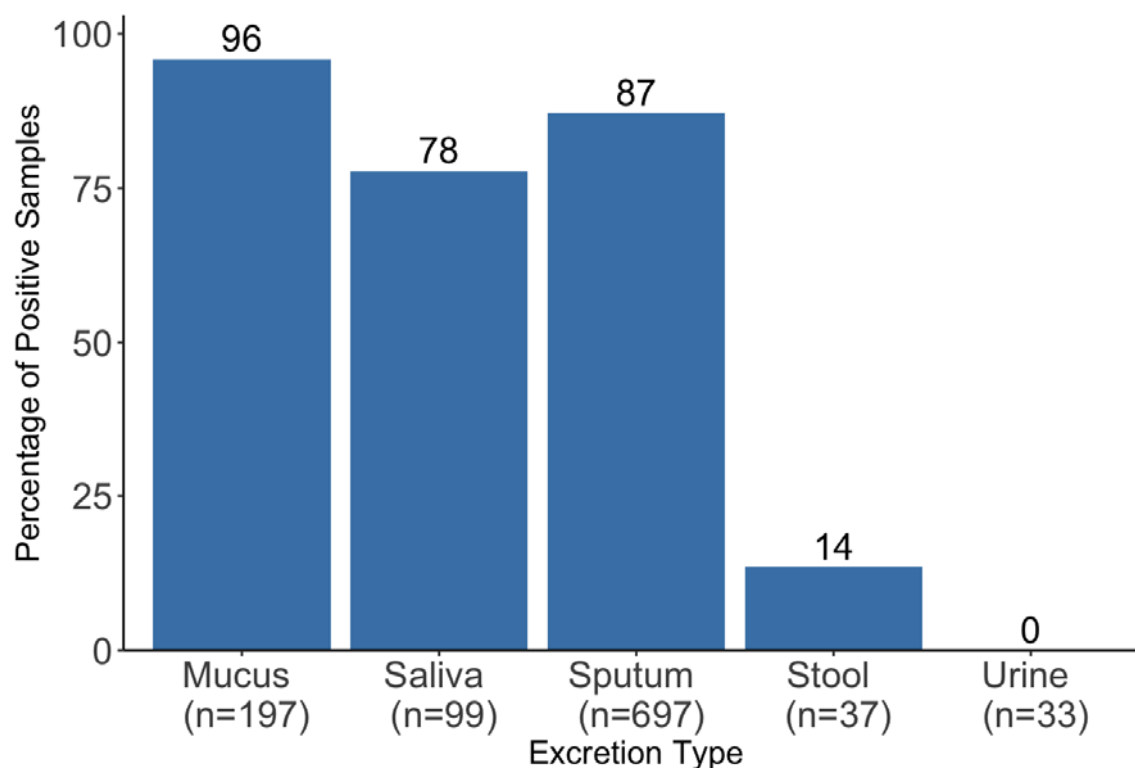
383 Table 3. Measured concentrations of RSV in mucus.

Data Format	Concentration	Units	Author
Median (25 th , 75 th percentile)	6.5×10^8 (1.3×10^8 , 5.4×10^9)	particles/mL	Van de Pol et al. 2010 (58)

384

385 Figure 7 shows the weighted average positivity rate for each excretion in subjects with
386 confirmed RSV infections, as calculated from the 26 cross-sectional positivity rate data
387 sets. A breakdown of RSV A versus RSV B positivity rates is shown in Supporting
388 Information Figure S3. While the weighted averages for mucus, saliva, and sputum are
389 all >75%, the weighted average for stool is 14% and there were no urine samples
390 positive for RSV. A chi-square test resulted in a p-value of less than 0.001, rejecting the
391 null hypothesis that positivity rates are the same across excretions.

392



393

394 Figure 7. Weighted Average Percentage of Positive RSV Detections in Various
395 Excretions from Subjects with Confirmed Infection. The reported value for n is the
396 number of samples included in the metaanalysis for each excretion type. The number
397 on top of each bar is the percent of samples positive.

398

399 Because RSV was not detected in urine in any subject, we examined data sets that
400 assayed for RSV in the urine of subjects with respiratory or gastrointestinal symptoms.
401 No identified study tested for the presence of RSV in urine. See Supporting Information
402 Table S4 for a list of these data sets.

403

404 **Metapneumovirus.** We identified 15 studies (15,20,24–32,34,46,57,59) containing 20
405 data sets with information on the shedding of metapneumovirus in excretions of
406 subjects with confirmed metapneumovirus infections. One data set reported longitudinal
407 positivity rates, while the remaining 19 reported positivity rate data from cross-sectional
408 studies with between one (20,29,46) and 156 (26) subjects. All 20 data sets measured
409 the virus using RT-PCR-based methods.

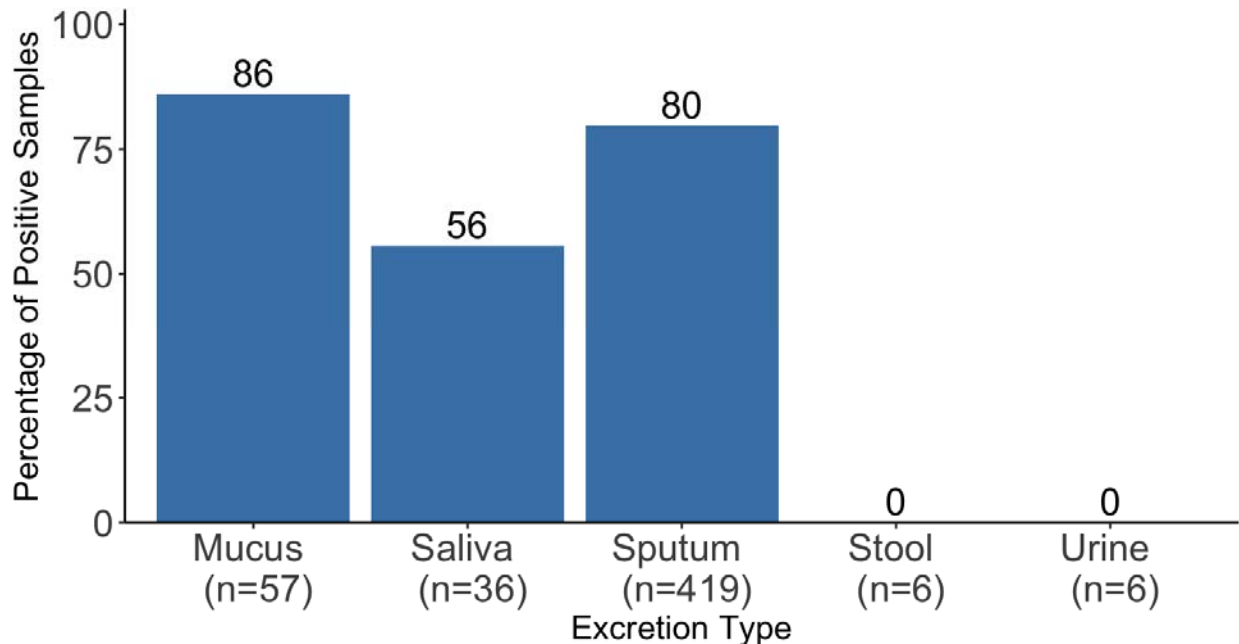
410

411 The longitudinal data set reported the positivity rates of metapneumovirus detection in
412 mucus of seven subjects over 24 days, with 7/7 (100%) testing positive on day 0 since
413 diagnosis with metapneumovirus via nasopharyngeal aspirate sample, 3/7 (43%)
414 positive on days 4-10, 0/7 positive on days 12-17, and 0/6 positive on days 20-24 (57).

415

416 Figure 8 shows the weighted average metapneumovirus positivity rates in various
417 excretions from the 19 cross-sectional data sets of subjects with confirmed
418 metapneumovirus infection. Mucus and sputum have the highest weighted averages at
419 >80%, and stool and urine have the lowest (0%), each being evaluated by only a single
420 data set with data from six subjects that did not detect any metapneumovirus. A Fisher's
421 exact test resulted in a p-value of less than 0.001, rejecting the null hypothesis that
422 positivity rates are the same across excretions.

423



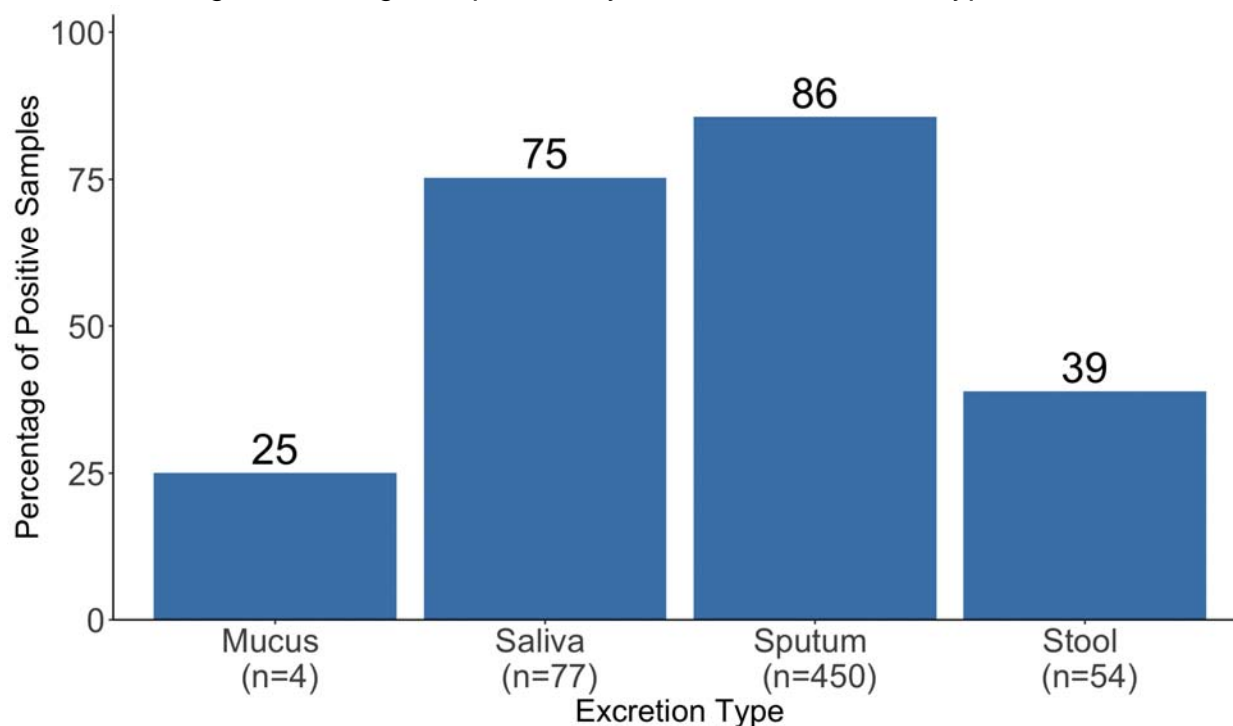
424
425 Figure 8. Weighted Average Percentage of Positive Metapneumovirus Detections in
426 Various Excretions from Subjects with Confirmed Metapneumovirus Infection. The
427 reported value for n is the number of samples included in the metaanalysis for each
428 excretion type. The number on top of each bar is the percent of samples positive.

429
430 Since metapneumovirus was not detected in any stool or urine samples of subjects with
431 confirmed metapneumovirus infections, we examined data sets testing for
432 metapneumovirus in the excretions of subjects with respiratory or gastrointestinal
433 symptoms. Metapneumovirus was detected in the stool of subjects with respiratory
434 symptoms, where it was found in 2/331 (0.6%) stool samples (35). However, no
435 identified data sets tested urine for metapneumovirus. See Supporting Information
436 Table S5 for additional information on these data sets.

437
438 **Seasonal Coronaviruses.** We identified 16 studies (15,17,20,22,23,25–
439 28,30,31,34,46,60–62) containing 43 data sets on the shedding of human coronaviruses
440 229E, HKU1, NL63, and/or OC43 in various excretions. No data sets reported any
441 longitudinal shedding data, and no study reported concentration data. All identified data
442 sets took the form of positivity rates, reporting cross-sectional data with sample sizes
443 ranging from one (20,22,28,34,60) to 62 (62) subjects with confirmed seasonal
444 coronavirus infection. Of the 43 data sets, 42 measured the virus using RT-PCR-based
445 methods while one used both cultivation and RT-PCR-based methods (61).

446
447 Figure 9 shows the weighted average positivity rates of seasonal coronaviruses in
448 various excretions from the 43 cross-sectional data sets of subjects with confirmed
449 seasonal coronavirus infection. Sputum and saliva both have the highest positivity rates

450 (86% and 75%, respectively) and stool and mucus have the lowest (39% and 25%,
451 respectively). No data sets of positivity rates of seasonal coronaviruses in urine of
452 subjects with confirmed seasonal coronavirus infection were identified in this review. A
453 Fisher's exact test resulted in a p-value of less than 0.001, rejecting the null hypothesis
454 that positivity rates are the same across excretions. Supporting Information Figure S4
455 shows the weighted averages separated by seasonal coronavirus type.



456
457 Figure 9. Weighted Averages of Percentage of Positive Seasonal Coronavirus
458 Detections in Various Excretions from Subjects with Confirmed Seasonal Coronavirus
459 Infection. The reported value for n is the number of samples included in the
460 metaanalysis for each excretion type. The number on top of each bar is the percent of
461 samples positive.

462
463 Since human coronaviruses were not measured in urine of subjects with confirmed
464 infections, we examined data sets that tested for seasonal coronaviruses in the
465 excretions of subjects with respiratory or gastrointestinal symptoms. No identified data
466 sets measured seasonal coronaviruses in urine. See Supporting Information Table S6
467 for additional information on these data sets.

468 469 Discussion

470
471 There are limited data available on the shedding of respiratory viruses in stool, saliva,
472 sputum, mucus, and urine. Our systematic review of the literature found that the vast
473 majority of data sets characterize positivity rates of respiratory viruses in excretions

474 (195/220), while only a few quantify respiratory virus concentration in excretions in a
475 cross-sectional study design (14/220) and even fewer examine longitudinal shedding
476 patterns in excretions (11/220). Additionally, the majority of data sets evaluated
477 respiratory viruses in saliva, sputum, and mucus. There was less data available for
478 respiratory virus detection in stool, as no data sets were available for parainfluenza
479 virus and the one data set that tested for metapneumovirus in stool failed to detect any
480 (although one study examining subjects with respiratory or gastrointestinal symptoms
481 reported positive detections of both parainfluenza virus and metapneumovirus in stool
482 (35)). Data sets on respiratory viruses in urine are even more sparse; with no studies
483 examining rhinovirus, parainfluenza virus, and seasonal coronaviruses in urine and
484 limited work examining RSV and metapneumovirus in urine (1 study assayed both RSV
485 and metapneumovirus in urine but failed to detect either virus (57)). Only influenza has
486 been detected in the urine of subjects with the respective diagnosed infection. This
487 emphasizes the finding that respiratory viruses have been characterized in different
488 excretions to differing extents, limiting the current knowledge of viral concentrations in
489 stool and urine, the more understudied excretions.

490

491 Data availability also differed according to respiratory virus type. There were the most
492 excretion data sets for influenza (n = 75) and the least for metapneumovirus and
493 rhinovirus (n = 20 for each). Table 4 highlights the uneven distribution of data as shown
494 in the number of samples evaluated in each excretion and virus.

495

496 Across the five different excretions, positivity rates for each virus were highest in mucus,
497 followed by sputum and then saliva (summarized in Table 4), and hypothesis testing
498 rejected the null hypothesis that positivity rates were the same across excretions. The
499 positivity rate of human coronavirus in mucus is the only exception to this pattern, but
500 data were limited (only four samples of mucus tested for human coronaviruses
501 compared to between 39 and 236 mucus samples tested for the other viruses).

502

503 Table 4. Summary of positivity rates, reported as percentage (number of samples
504 positive/number of total samples), of respiratory viruses in excretions of subjects with
505 confirmed infections. 0 indicates excretions were tested but none were positive for the
506 presence of the virus, while n/a indicates no excretions were tested for the presence of
507 the virus. * indicates the virus was not detected in subjects with confirmed infection but
508 has been detected in the excretion although in patients with symptoms. RV is rhinovirus,
509 PIV is parainfluenza virus, Flu is influenza, RSV is respiratory syncytial virus, HMPV is
510 human metapneumovirus, and HCoV is human seasonal coronavirus.

	RV	PIV	Flu	RSV	HMPV	HCoV
Mucus	92%	96%	98%	96%	86%	25%

	(36/39)	(50/52)	(231/236)	(189/197)	(49/57)	(1/4)
Saliva	67% (130/195)	69% (24/35)	82% (370/453)	78% (77/99)	56% (20/36)	75% (58/77)
Sputum	82% (578/704)	82% (319/389)	86% (330/383)	87% (608/697)	80% (334/419)	86% (385/450)
Stool	6% (1/17)	n/a*	36% (200/559)	14% (5/37)	0%* (0/6)	39% (21/54)
Urine	n/a	n/a	58% (19/33)	0% (0/33)	0% (0/6)	n/a

511
 512 There were very few quantitative measurements of respiratory virus concentrations in
 513 excretions. The most concentration data were available for influenza for which there
 514 were 21 data sets (6 longitudinal and 15 cross-sectional), while no concentrations of
 515 parainfluenza virus, metapneumovirus, or seasonal coronaviruses were reported in any
 516 excretions. No data sets measured any respiratory virus concentration in urine.
 517 Comparing viral concentrations between excretions and between respiratory viruses is
 518 challenging because of the diversity of quantification methods used and units reported.
 519 Units reported include TCID₅₀/g (culture-based methodology), and genomes/mg,
 520 copies/g, and particles/mL (RT-PCR-based methodology). Some studies that reported
 521 quantitative-type data on respiratory viruses in excretions were excluded from this
 522 review because they quantified viruses using units that were not externally valid (e.g.
 523 CT values from real time PCR machines) or failed to report sufficient methods to
 524 determine the concentration of the respiratory virus in the excretion (e.g. concentration
 525 in copies/mL of viral transport medium).

526
 527 This work reveals that there is a significant knowledge gap on respiratory virus
 528 concentrations in excretions. This information is needed to link concentrations of
 529 respiratory viruses in wastewater to the number of people infected with the virus in the
 530 population contributing to wastewater. We recommend that future studies should
 531 explicitly characterize concentrations of respiratory viruses in mucus, saliva, sputum,
 532 stool, and urine, reporting standard units (e.g. copies per unit volume of excretion) and
 533 complete methods including details established by the Minimum Information for
 534 Publication of Quantitative Real-Time PCR Experiments (MIQE) (63) and Environmental
 535 Microbiology Minimum Information (EMMI) Guidelines (64). Data are needed across all
 536 respiratory virus and excretion types to build more robust data sets, but are especially
 537 needed for parainfluenza virus, metapneumovirus, and human coronavirus where there
 538 was no concentration data identified in this review. While positivity rate data sets are
 539 useful in estimating the proportion of infected people that shed a certain respiratory

540 virus in excretions, they cannot provide quantitative estimates of viral shedding
541 necessary to begin to translate wastewater concentrations to individual case numbers in
542 a community. Additionally, longitudinal studies that examine the concentrations of
543 respiratory viruses in excretions over time are critical in providing information on both
544 the duration of shedding and how concentrations of viruses in excretions vary over time.
545 Such data, for example, are needed to use wastewater data to predict effective
546 reproductive numbers of pathogens (65). Very few studies identified in this review
547 reported longitudinal data and only one study on influenza reported longitudinal
548 concentration data. Additional factors to consider in predicting effective reproductive
549 numbers of pathogens through wastewater include the relative contribution of each
550 excretion to wastewater, the design of the sewer system, the wastewater sampling
551 location, and the sample matrix, among others (65). Public health officials and modelers
552 interested in applying these results to quantitatively link their wastewater concentrations
553 to numbers of infected individuals should be aware of these limitations and data gaps.

554
555 There are several limitations to this review. We only included studies written in English,
556 which could have excluded studies with relevant data. We did not perform any formal
557 evaluations of bias across the included studies. Additionally, we chose to focus on data
558 sets with measurements made in direct excretions, excluding samples from areas of the
559 body that generate excretions (e.g. swabs and lavages). This narrowed the body of
560 literature applicable to this review. We also focused on positivity rates in the excretions
561 of subjects with confirmed infections, rather than subjects whose infection status was
562 unknown, again narrowing the applicable body of literature. This decision was made
563 because positivity rates from subjects whose infection status is unknown are not useful
564 in determining the shedding rates of viruses in excretions; rather the only information
565 relevant to this review that they can provide is evidence that respiratory viruses can be
566 shed in certain excretions. Some cross-sectional data sets inadvertently sampled from
567 the same subject multiple times, which could impact the positivity rate data. The chosen
568 statistical tests we performed (chi-square test and Fisher's exact test) do not account for
569 correlation, but some of our data was correlated. However, we could not account for this
570 correlation when comparing the data across all excretion types. Finally, we were unable
571 to perform a formal meta-analysis on concentration data given the limited data and
572 inconsistent units reported in the concentration data. As such, we could not examine
573 whether shedding patterns were different across different viral subtypes (for example,
574 RSV A versus RSV B).

575

576 **Author Contributions**

577 S.L. Conceptualization, Data Curation, Formal analysis, Investigation, Methodology,
578 Visualizations, Writing – Original Draft Preparation, Writing – Review & Editing. A.B.B.
579 Conceptualization, Funding Acquisition, Methodology, Project Administration,

580 Resources, Supervision, Validation, Writing – Original Draft Preparation, Writing –
581 Review & Editing. M.K.W. Conceptualization, Writing - Review & Editing, Methodology.

582

583 References

584

- 585 1. Pneumonia in children [Internet]. [cited 2022 Dec 22]. Available from:
586 <https://www.who.int/news-room/fact-sheets/detail/pneumonia>
- 587 2. Moriyama M, Hugentobler WJ, Iwasaki A. Seasonality of Respiratory Viral Infections. *Annu*
588 *Rev Virol.* 2020 Sep 29;7(1):83–101.
- 589 3. van Doorn HR, Yu H. 33 - Viral Respiratory Infections. In: Ryan ET, Hill DR, Solomon T,
590 Aronson NE, Endy TP, editors. *Hunter’s Tropical Medicine and Emerging Infectious*
591 *Diseases (Tenth Edition)* [Internet]. London: Elsevier; 2020 [cited 2022 Dec 1]. p. 284–8.
592 Available from: <https://www.sciencedirect.com/science/article/pii/B9780323555128000338>
- 593 4. Hughes B, Duong D, White BJ, Wigginton KR, Chan EMG, Wolfe MK, et al. Respiratory
594 Syncytial Virus (RSV) RNA in Wastewater Settled Solids Reflects RSV Clinical Positivity
595 Rates. *Environ Sci Technol Lett.* 2022 Feb 8;9(2):173–8.
- 596 5. Wolfe MK, Duong D, Bakker KM, Ammerman M, Mortenson L, Hughes B, et al. Wastewater-
597 Based Detection of Two Influenza Outbreaks. *Environ Sci Technol Lett.* 2022 Aug
598 9;9(8):687–92.
- 599 6. Brinkman NE, Fout GS, Keely SP. Retrospective Surveillance of Wastewater To Examine
600 Seasonal Dynamics of Enterovirus Infections. *mSphere.* 2017 Jun 14;2(3):e00099-17.
- 601 7. Boehm AB, Hughes B, Doung D, Chan-Herur V, Buchman A, Wolfe MK, et al. Wastewater
602 surveillance of human influenza, metapneumovirus, parainfluenza, respiratory syncytial
603 virus (RSV), rhinovirus, and seasonal coronaviruses during the COVID-19 pandemic
604 [Internet]. *medRxiv*; 2022 [cited 2022 Dec 22]. p. 2022.09.22.22280218. Available from:
605 <https://www.medrxiv.org/content/10.1101/2022.09.22.22280218v1>
- 606 8. Soller J, Jennings W, Schoen M, Boehm A, Wigginton K, Gonzalez R, et al. Modeling
607 infection from SARS-CoV-2 wastewater concentrations: promise, limitations, and future
608 directions. *J Water Health.* 2022 Jul 11;20(8):1197–211.
- 609 9. Moher D, Liberati A, Tetzlaff J, Altman DG. Preferred reporting items for systematic reviews
610 and meta-analyses: the PRISMA statement. *BMJ.* 2009 Jul 21;339:b2535.
- 611 10. Lowry, S., & Boehm, A. Systematic review of shedding of respiratory viruses in excretions
612 that comprise wastewater. 2022 Oct 13; Available from:
613 <https://doi.org/10.17605/OSF.IO/ESVYC>
- 614 11. Covidence systematic review software [Internet]. Melbourne, Australia: Veritas Health
615 Innovation; 2022. Available from: www.covidence.org
- 616 12. Rohatgi A. WebPlotDigitizer [Internet]. Pacifica, California, USA; 2021. Available from:
617 <https://automeris.io/WebPlotDigitizer>
- 618 13. R Core Team. R: A language and environment for statistical computing. [Internet]. Vienna,
619 Austria: R Foundation for Statistical Computing; 2021. Available from: [https://www.R-](https://www.R-project.org/)
620 [project.org/](https://www.R-project.org/)
- 621 14. Bergallo M, Dapra V, Rassu M, Calvi C, Galliano I, Montanari P. Prevalence of human
622 Rhinovirus in stool samples of children with acute gastroenteritis in Italy. *MINERVA*
623 *Biotecnol.* 2019;31(1):45–8.
- 624 15. Branche AR, Walsh EE, Formica MA, Falsey AR. Detection of respiratory viruses in sputum
625 from adults by use of Automated Multiplex PCR. *J Clin Microbiol.* 2014;52(10):3590–6.
- 626 16. Cate TR, Douglas RG Jr, Johnson KM, Couch RB, Knight V. Studies on the Inability of
627 Rhinovirus to Survive and Replicate in The Intestinal Tract of Volunteers. *Proc Soc Exp Biol*
628 *Med.* 1967;124(4):1290–5.

- 629 17. De Koff EM, Euser SM, Badoux P, Sluiter-Post J, Eggink D, Sanders EAM, et al.
630 Respiratory Pathogen Detection in Children: Saliva as a Diagnostic Specimen. *Pediatr Infect*
631 *Dis J.* 2021;40(9):E351–3.
- 632 18. Gwaltney JM Jr, Moskalski PB, Hendley JO. Hand-to-hand transmission of rhinovirus colds.
633 *Ann Intern Med.* 1978;88(4):463–7.
- 634 19. Heikkinen T, Marttila J, Salmi AA, Ruuskanen O. Nasal Swab versus Nasopharyngeal
635 Aspirate for Isolation of Respiratory Viruses. *J Clin Microbiol.* 2002 Nov;40(11):4337–9.
- 636 20. Huijskens EG, Rossen JW, Kluytmans JA, van der Zanden AG, Koopmans M. Evaluation of
637 yield of currently available diagnostics by sample type to optimize detection of respiratory
638 pathogens in patients with a community-acquired pneumonia. *Influenza Respir Viruses.*
639 2014;8(2):243–9.
- 640 21. Jartti T, Lehtinen P, Vuorinen T, Koskenvuo M, Ruuskanen O. Persistence of rhinovirus and
641 enterovirus RNA after acute respiratory illness in children. *J Med Virol.* 2004;72(4):695–9.
- 642 22. Jeong J, Kim K, Jeong S, Park J, Lee S, Seo Y. Comparison of Sputum and
643 Nasopharyngeal Swabs for Detection of Respiratory Viruses. *J Med Virol.*
644 2014;86(12):2122–7.
- 645 23. Kim Y, Yun S, Kim M, Park K, Cho C, Yoon S, et al. Comparison between Saliva and
646 Nasopharyngeal Swab Specimens for Detection of Respiratory Viruses by Multiplex
647 Reverse Transcription-PCR. *J Clin Microbiol.* 2017;55(1):226–33.
- 648 24. Lahti E, Peltola V, Waris M, Virkki R, Rantakokko-Jalava K, Jalava J, et al. Induced sputum
649 in the diagnosis of childhood community-acquired pneumonia. *THORAX.* 2009;64(3):252–7.
- 650 25. Mermond S, Zurawski V, D’Ortenzio E, Driscoll A, DeLuca A, Deloria-Knoll M, et al. Lower
651 Respiratory Infections Among Hospitalized Children in New Caledonia: A Pilot Study for the
652 Pneumonia Etiology Research for Child Health Project. *Clin Infect Dis.* 2012;54:S180–9.
- 653 26. Thea DM, Seidenberg P, Park DE, Mwananyanda L, Fu W, Shi Q, et al. Limited utility of
654 polymerase chain reaction in induced sputum specimens for determining the causes of
655 childhood pneumonia in resource-poor settings: Findings from the pneumonia etiology
656 research for child health (PERCH) study. *Clin Infect Dis.* 2017;64:S289–300.
- 657 27. Wang L, Yang S, Yan X, Liu T, Feng Z, Li G. Comparing the yield of oropharyngeal swabs
658 and sputum for detection of 11 common pathogens in hospitalized children with lower
659 respiratory tract infection. *Virol J.* 2019;16.
- 660 28. Yasuda I, Suzuki M, Maeda H, Terada M, Sando E, Ng C, et al. Respiratory virus detection
661 in the upper respiratory tract of asymptomatic, community-dwelling older people. *BMC Infect*
662 *Dis.* 2022;22(1).
- 663 29. Yoshii Y, Shimizu K, Morozumi M, Chiba N, Ubukata K, Uruga H, et al. Identification of
664 pathogens by comprehensive real-time PCR versus conventional methods in community-
665 acquired pneumonia in Japanese adults. *Infect Dis.* 2016;48(11–12):782–8.
- 666 30. Zar HJ, Barnett W, Stadler A, Gardner-Lubbe S, Myer L, Nicol MP. Aetiology of childhood
667 pneumonia in a well vaccinated South African birth cohort: a nested case-control study of
668 the Drakenstein Child Health Study. *Lancet Respir Med.* 2016;4(6):463–72.
- 669 31. Falsey AR, Formica MA, Walsh EE. Yield of sputum for viral detection by reverse
670 transcriptase PCR in adults hospitalized with respiratory illness. *J Clin Microbiol.*
671 2012;50(1):21–4.
- 672 32. Lambert SB, Whiley DM, O’Neill NT, Andrews EC, Canavan FM, Bletchly C, et al.
673 Comparing nose-throat swabs and nasopharyngeal aspirates collected from children with
674 symptoms for respiratory virus identification using real-time polymerase chain reaction.
675 *Pediatrics.* 2008;122(3):e615-20.
- 676 33. Robinson J, Lee B, Kothapalli S, Craig W, Fox J. Use of throat swab or saliva specimens for
677 detection of respiratory viruses in children. *Clin Infect Dis.* 2008;46(7):E61–4.
- 678 34. To KK, Lu L, Yip CC, Poon RW, Fung AM, Cheng A, et al. Additional molecular testing of
679 saliva specimens improves the detection of respiratory viruses. *Emerg Microbes Infect*

- 680 [Internet]. 2017;6(6). Available from: <https://www.scopus.com/inward/record.uri?eid=2-s2.0-85020311558&doi=10.1038%2femi.2017.35&partnerID=40&md5=a8b831837ea5a3121a9d5d9e9dcccdf44>
- 681
- 682
- 683 35. Minodier L, Masse S, Capai L, Blanchon T, Ceccaldi P, van der Werf S, et al. Clinical and
- 684 virological factors associated with gastrointestinal symptoms in patients with acute
- 685 respiratory infection: a two-year prospective study in general practice medicine. *BMC Infect*
- 686 *Dis.* 2017;17.
- 687 36. Al Khatib H, Mathew S, Smatti M, Eltai N, Pathan S, Al Thani A, et al. Profiling of Intestinal
- 688 Microbiota in Patients Infected with Respiratory Influenza A and B Viruses. *PATHOGENS.*
- 689 2021;10(6).
- 690 37. Al Khatib H, Coyle P, Al Maslamani M, Al Thani A, Pathan S, Yassine H. Molecular and
- 691 biological characterization of influenza A viruses isolated from human fecal samples. *Infect*
- 692 *Genet Evol.* 2021;93.
- 693 38. Arena C, Amoros J, Vaillant V, Balay K, Chikhi-Brachet R, Varesi L, et al. Simultaneous
- 694 investigation of influenza and enteric viruses in the stools of adult patients consulting in
- 695 general practice for acute diarrhea. *Virology.* 2012;9.
- 696 39. Bilder L, Machtei E, Shenhar Y, Kra-Oz Z, Basis F. Salivary Detection of H1N1 Virus: A
- 697 Clinical Feasibility Investigation. *J Dent Res.* 2011;90(9):1136–9.
- 698 40. Chan M, Lee N, Chan P, Leung T, Sung J. Fecal detection of influenza A virus in patients
- 699 with concurrent respiratory and gastrointestinal symptoms. *J Clin Virol.* 2009;45(3):208–11.
- 700 41. Chan M, Lee N, Chan P, To K, Wong R, Ho W, et al. Seasonal Influenza A Virus in Feces of
- 701 Hospitalized Adults. *Emerg Infect Dis.* 2011;17(11):2038–42.
- 702 42. Dilantika C, Sedyaningsih E, Kasper M, Agtini M, Listiyaningsih E, Uyeki T, et al. Influenza
- 703 virus infection among pediatric patients reporting diarrhea and influenza-like illness. *BMC*
- 704 *Infect Dis.* 2010;10.
- 705 43. Galar A, Catalan P, Vesperinas L, Miguens I, Munoz I, Garcia-Espona A, et al. Use of Saliva
- 706 Swab for Detection of Influenza Virus in Patients Admitted to an Emergency Department.
- 707 *Microbiol Spectr.* 2021;9(1).
- 708 44. Hirose R, Daidoji T, Naito Y, Watanabe Y, Arai Y, Oda T, et al. Long-term detection of
- 709 seasonal influenza RNA in faeces and intestine. *Clin Microbiol Infect.* 2016;22(9).
- 710 45. Ho Y, Yoshino A, Tonacio A, Latif A, Caiaffa H, dos Santos S. Detection of pandemic
- 711 influenza-A(H1N1)-2009 virus in urine. *INTENSIVE CARE Med.* 2013;39(6):1168–9.
- 712 46. She RC, Taggart EW, Ruegner R, Hymas WC, Bender JM, Weir P, et al. Identifying
- 713 respiratory viruses in nasal mucus from children. *Pediatr Infect Dis J.* 2010;29(10):970–2.
- 714 47. Sueki A, Matsuda K, Yamaguchi A, Uehara M, Sugano M, Uehara T, et al. Evaluation of
- 715 saliva as diagnostic materials for influenza virus infection by PCR-based assays. *Clin Chim*
- 716 *Acta.* 2016;453:71–4.
- 717 48. Suryaprasad A, Morgan O, Peebles P, Warner A, Kerin T, Esona M, et al. Virus Detection
- 718 and Duration of Illness Among Patients With 2009 Pandemic Influenza A (H1N1) Virus
- 719 Infection in Texas. *Clin Infect Dis.* 2011;52:S109–15.
- 720 49. Tamura D, Fujino M, Ozawa M, Iwatsuki-Horimoto K, Goto H, Sakai-Tagawa Y, et al.
- 721 Significance of seasonal influenza viruses in the stool of pediatric patients. *Pediatr Infect Dis*
- 722 *J.* 2010;29(6):578–9.
- 723 50. To K, Chan K, Li I, Tsang T, Tse H, Chan J, et al. Viral Load in Patients Infected With
- 724 Pandemic H1N1 2009 Influenza A Virus. *J Med Virol.* 2010;82(1):1–7.
- 725 51. To K, Yip C, Lai C, Wong C, Ho D, Pang P, et al. Saliva as a diagnostic specimen for testing
- 726 respiratory virus by a point-of-care molecular assay: a diagnostic validity study. *Clin*
- 727 *Microbiol Infect.* 2019;25(3):372–8.
- 728 52. Wootton SH, Aguilera EA, Wanger A, Jewell A, Patel K, Murphy JR, et al. Detection of
- 729 NH1N1 influenza virus in nonrespiratory sites among children. *Pediatr Infect Dis J.*
- 730 2014;33(1):95–6.

- 731 53. Yoo S, Moon S, Kuak E, Yoo H, Kim C, Chey M, et al. Frequent Detection of Pandemic
732 (H1N1) 2009 Virus in Stools of Hospitalized Patients. *J Clin Microbiol.* 2010;48(6):2314–5.
733 54. Yoon J, Yun S, Nam J, Choi S, Lim C. The use of saliva specimens for detection of
734 influenza A and B viruses by rapid influenza diagnostic tests. *J Virol METHODS.*
735 2017;243:15–9.
736 55. Yu L, Wang Z, Chen Y, Ding W, Jia H, Chan J, et al. Clinical, Virological, and
737 Histopathological Manifestations of Fatal Human Infections by Avian Influenza A(H7N9)
738 Virus. *Clin Infect Dis.* 2013;57(10):1449–57.
739 56. Zhu Z, Liu Y, Xu L, Guan W, Zhang X, Qi T, et al. Extra-pulmonary viral shedding in H7N9
740 Avian Influenza patients. *J Clin Virol.* 2015;69:30–2.
741 57. von Linstow M, Eugen-Olsen J, Koch A, Winther T, Westh H, Høgh B. Excretion patterns of
742 human metapneumovirus and respiratory syncytial virus among young children. *Eur J Med*
743 *Res.* 2006;11(8):329–35.
744 58. de Pol A, Wolfs T, van Loon A, Tacke C, Viveen M, Jansen N, et al. Molecular
745 Quantification of Respiratory Syncytial Virus in Respiratory Samples: Reliable Detection
746 during the Initial Phase of Infection. *J Clin Microbiol.* 2010;48(10):3569–74.
747 59. Yajima T, Takahashi H, Kimura N, Sato K, Jingu D, Ubukata S, et al. Comparison of sputum
748 specimens and nasopharyngeal swab specimens for diagnosis of acute human
749 metapneumovirus-related lower respiratory tract infections in adults. *J Clin Virol.*
750 2022;154:105238.
751 60. Paloniemi M, Lappalainen S, Vesikari T. Commonly circulating human coronaviruses do not
752 have a significant role in the etiology of gastrointestinal infections in hospitalized children. *J*
753 *Clin Virol.* 2015;62:114–7.
754 61. Vabret A, Dina J, Gouarin S, Petitjean J, Corbet S, Freymuth F. Detection of the new human
755 coronavirus HKU1: A report of 6 cases. *Clin Infect Dis.* 2006;42(5):634–9.
756 62. Zhang Y, Su L, Chen Y, Yu S, Zhang D, Mao H, et al. Etiology and clinical characteristics of
757 SARS-CoV-2 and other human coronaviruses among children in Zhejiang Province, China
758 2017-2019. *Virol J.* 2021;18(1).
759 63. Bustin SA, Benes V, Garson JA, Hellems J, Huggett J, Kubista M, et al. The MIQE
760 Guidelines: Minimum Information for Publication of Quantitative Real-Time PCR
761 Experiments. *Clin Chem.* 2009 Apr 1;55(4):611–22.
762 64. Borchardt MA, Boehm AB, Salit M, Spencer SK, Wigginton KR, Noble RT. The
763 Environmental Microbiology Minimum Information (EMMI) Guidelines: qPCR and dPCR
764 Quality and Reporting for Environmental Microbiology. *Environ Sci Technol.* 2021 Aug
765 3;55(15):10210–23.
766 65. Huisman JS, Scire J, Caduff L, Fernandez -Cassi Xavier, Ganesanandamoorthy P, Kull A,
767 et al. Wastewater-Based Estimation of the Effective Reproductive Number of SARS-CoV-2.
768 *Environ Health Perspect.* 130(5):057011.

769
770
771
772
773
774