

Supplementary Information

Authors

Charles N. Agoti^{1,2, #}, Katherine E. Gallagher^{1,3}, Joyce Nyiro¹, Arnold W. Lambisia¹, Nickson Murunga¹, Khadija Said Mohammed¹, Leonard Ndwiga¹, John M. Morobe¹, Maureen W. Mburu¹, Edidah M. Ongeru¹, Timothy Makori¹, My Phan⁴, Matthew Cotten^{4,5}, Lynette Isabella Ochola-Oyier¹, Simon Dellicour^{6,7}, Philip Bejon^{1,8}, George Githinji^{1,2}, and D. James Nokes^{1,9}.

Affiliations

¹Kenya Medical Research Institute (KEMRI)-Wellcome Trust Research Programme (KWTRP), Kilifi, Kenya.

²Pwani University, Kilifi, Kenya.

³London School of Hygiene & Tropical Medicine, United Kingdom.

⁴Medical Research Centre (MRC)/ Uganda Virus Research Institute, Entebbe, Uganda

⁵MRC-University of Glasgow, Centre for Virus Research Glasgow, United Kingdom.

⁶Spatial Epidemiology Lab (SpELL), Université Libre de Bruxelles, Bruxelles, Belgium.

⁷Department of Microbiology, Immunology and Transplantation, Rega Institute, Laboratory for Clinical and Epidemiological Virology, KU Leuven, University of Leuven, Leuven, Belgium.

⁸Nuffield Department of Medicine, University of Oxford, Oxford, United Kingdom.

⁹School of Life Sciences and Zeeman Institute for Systems Biology and Infectious Disease Epidemiology Research (SBIDER), University of Warwick, Coventry, United Kingdom.

S1 Table. Lineages identified in the sequenced samples from the present household study. For each lineage we report, their frequency and as well as the global history of their detection .

Lineage	Number	VOC status	Most common countries	Earliest date	Description
B.1	12	non-VOC	United States of America 46.0%, Turkey 12.0%, United Kingdom 7.0%, Canada 4.0%, France 3.0%	2020-01-01	A large European lineage the origin of which roughly corresponds to the Northern Italian outbreak early in 2020.
B.1.1.7	70	Alpha	United Kingdom 24.0%, United States of America 20.0%, Germany 9.0%, Sweden 6.0%, Denmark 6.0%	2020-09-01	UK lineage of concern, associated with the N501Y mutation. More information can be found at cov-lineages.org/global_report.html
B.1.351	21	Beta	South_Africa 19.0%, Philippines 9.0%, United States of America 9.0%, Sweden 8.0%, Germany 7.0%	2020-09-01	Lineage of concern detected in South Africa
AY.122	4	Delta	Germany 17.0%, United States of America 13.0%, France 10.0%, Denmark 10.0%, Sweden 5.0%	2020-05-11	Alias of B.1.617.2.122, European lineage
AY.4	1	Delta	United Kingdom 84.0%, Denmark 3.0%, Germany 2.0%, Ireland 2.0%, France 1.0%	2020-05-11	Alias of B.1.617.2.4, UK lineage, from pango-designation issue #180
AY.46	5	Delta	Denmark 21.0%, Germany 11.0%, Sweden 8.0%, United States of America 7.0%, United Kingdom 6.0%	2020-06-01	Alias of B.1.617.2.46, Africa lineage, from pango-designation issue #247
AY.16	5	Delta	India 46.0%, United States of America 18.0%, Kenya 17.0%, Denmark 5.0%, Germany 3.0%	2020-10-26	Alias of B.1.617.2.16, lineage in Kenya and multiple other countries
AY.116	58	Delta	Norway 12.0%, Sweden 11.0%, Brazil 10.0%, Kenya 8.0%, Zambia 8.0%	2021-01-21	Alias of B.1.617.2.116, Africa lineage
B.1.617.2	15	Delta	United States of America 22.0%, India 19.0%, United Kingdom 13.0%, Turkey 7.0%, Germany 5.0%	2021-03-01	Predominantly India lineage with several spike mutations, pango-designation issue #49
BA.1.1	14	BA.1-like	United States of America 47.0%, United Kingdom 20.0%, Germany 7.0%, Canada 4.0%, France 2.0%	2021-09-09	Alias of B.1.1.529.1.1, from pango-designation issue #360
BA.1.1.1	4	BA.1-like	France 33.0%, Germany 18.0%, United Kingdom 11.0%, Spain 6.0%, Poland 5.0%	2021-11-12	Alias of B.1.1.529.1.1.1, European lineage
BA.1.9	1	BA.1-like	Brazil 93.0%, United Kingdom 4.0%, United States of America 1.0%, Japan 0.0%, Chile 0.0%	2021-12-11	Alias of B.1.1.529.1.9, Brazil lineage

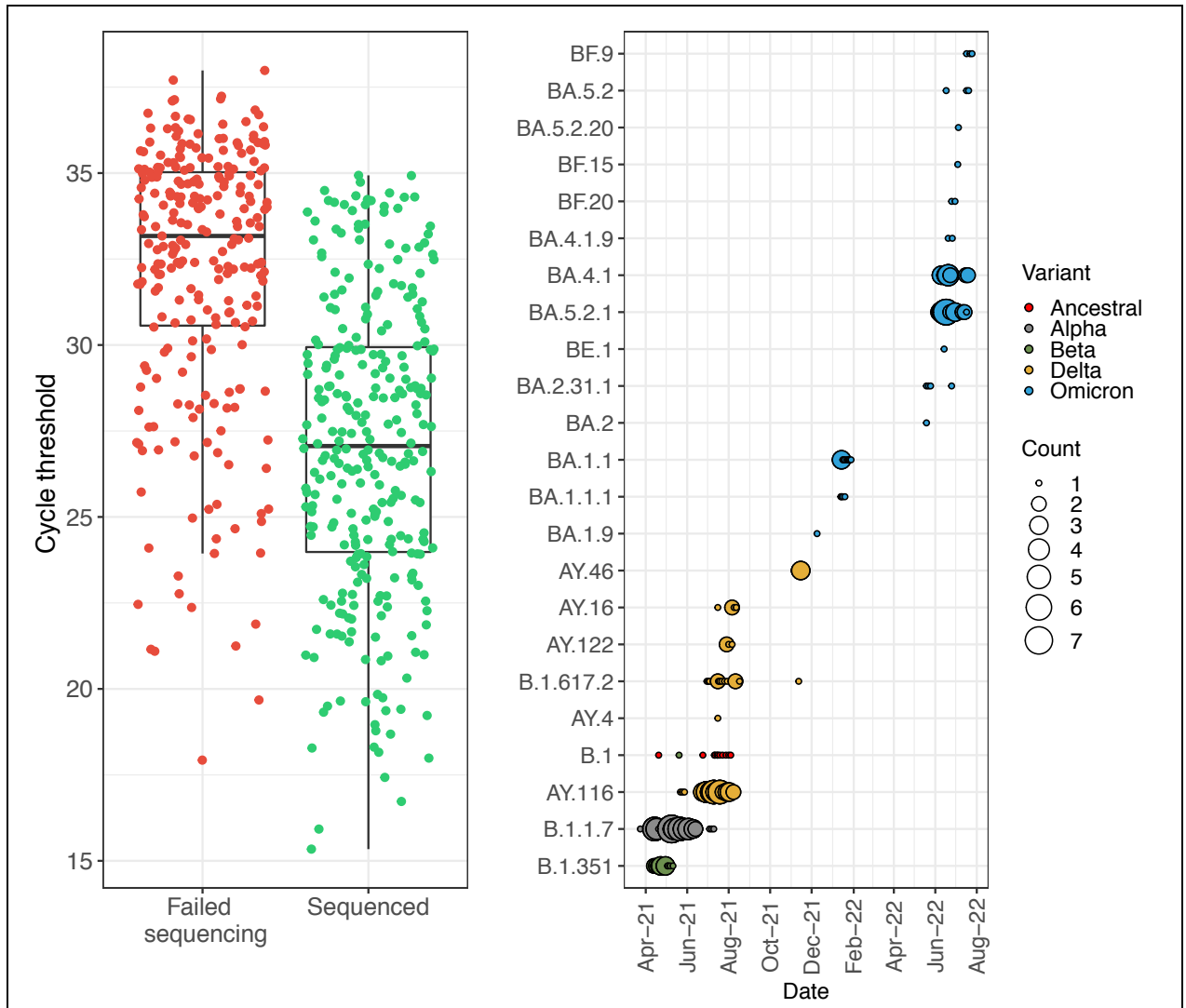
BA.2	1	BA.2-like	United Kingdom 29.0%, Germany 13.0%, Denmark 12.0%, United States of America 11.0%, France 7.0%	2021-09-21	Alias of B.1.1.529.2, from pango-designation issue #361
BA.2.31.1	4	BA.2-like	Australia 28.0%, United States of America 27.0%, Uganda 17.0%, Kenya 9.0%, United Kingdom 3.0%	2022-02-23	Alias of B.1.1.529.2.31.1, mainly found in Uganda, defined by S:68T, from pango-designation issue #819
BA.4.1	19	BA.4-like	United States of America 48.0%, United Kingdom 9.0%, Germany 4.0%, Chile 4.0%, Israel 4.0%	2021-12-14	Alias of B.1.1.529.4.1, mainly found in South Africa, from pango-designation issue #548
BA.4.1.9	2	BA.4-like	United States of America 45.0%, South_Africa 7.0%, Denmark 6.0%, France 5.0%, Germany 5.0%	2021-12-22	Alias of B.1.1.529.4.1.9, mainly found in Zambia, USA, England and Mexico, from pango-designation issue #926
BE.1	1	BA.5-like	United States of America 28.0%, United Kingdom 15.0%, Germany 6.0%, Australia 5.0%, Japan 4.0%	2020-07-21	Alias of B.1.1.529.5.3.1.1, mainly found in South Africa, Austria and England, from pango-designation issue #625
BA.5.2	3	BA.5-like	United States of America 19.0%, Japan 17.0%, Germany 7.0%, United Kingdom 6.0%, France 4.0%	2021-10-20	Alias of B.1.1.529.5.2, mainly found in South Africa, England and USA, from pango-designation issue #551
BA.5.2.1	41	BA.5-like	United States of America 41.0%, Japan 9.0%, Canada 6.0%, Germany 5.0%, United Kingdom 5.0%	2021-11-15	Alias of B.1.1.529.5.2.1, mainly found in South Africa, England and USA, from pango-designation issue #657
BA.5.2.20	1	BA.5-like	United States of America 20.0%, France 11.0%, Germany 9.0%, United Kingdom 7.0%, Japan 7.0%	2022-02-26	Alias of B.1.1.529.5.2.20, mainly Indonesia, defined by C23707T on ORF1b:1050N branch to reduce unspecified BA.5.2
BF.20	2	BA.5-like	Kenya 28.0%, United Kingdom 18.0%, Canada 12.0%, United States of America 11.0%, Germany 8.0%	2022-05-24	Alias of B.1.1.529.5.2.1.20, lineage in Kenya and other countries
BF.9	3	BA.5-like	Canada 64.0%, United States of America 32.0%, Germany 1.0%, Belgium 1.0%, United Kingdom 1.0%	2022-05-28	Alias of B.1.1.529.5.2.1.9, Canada lineage
BF.15	1	BA.5-like	Australia 24.0%, United States of America 15.0%, United Kingdom 12.0%, Denmark 10.0%, Japan 6.0%	2022-06-16	Alias of B.1.1.529.5.2.1.15, Sri Lanka lineage, from pango-designation issue #893

S2 Table.

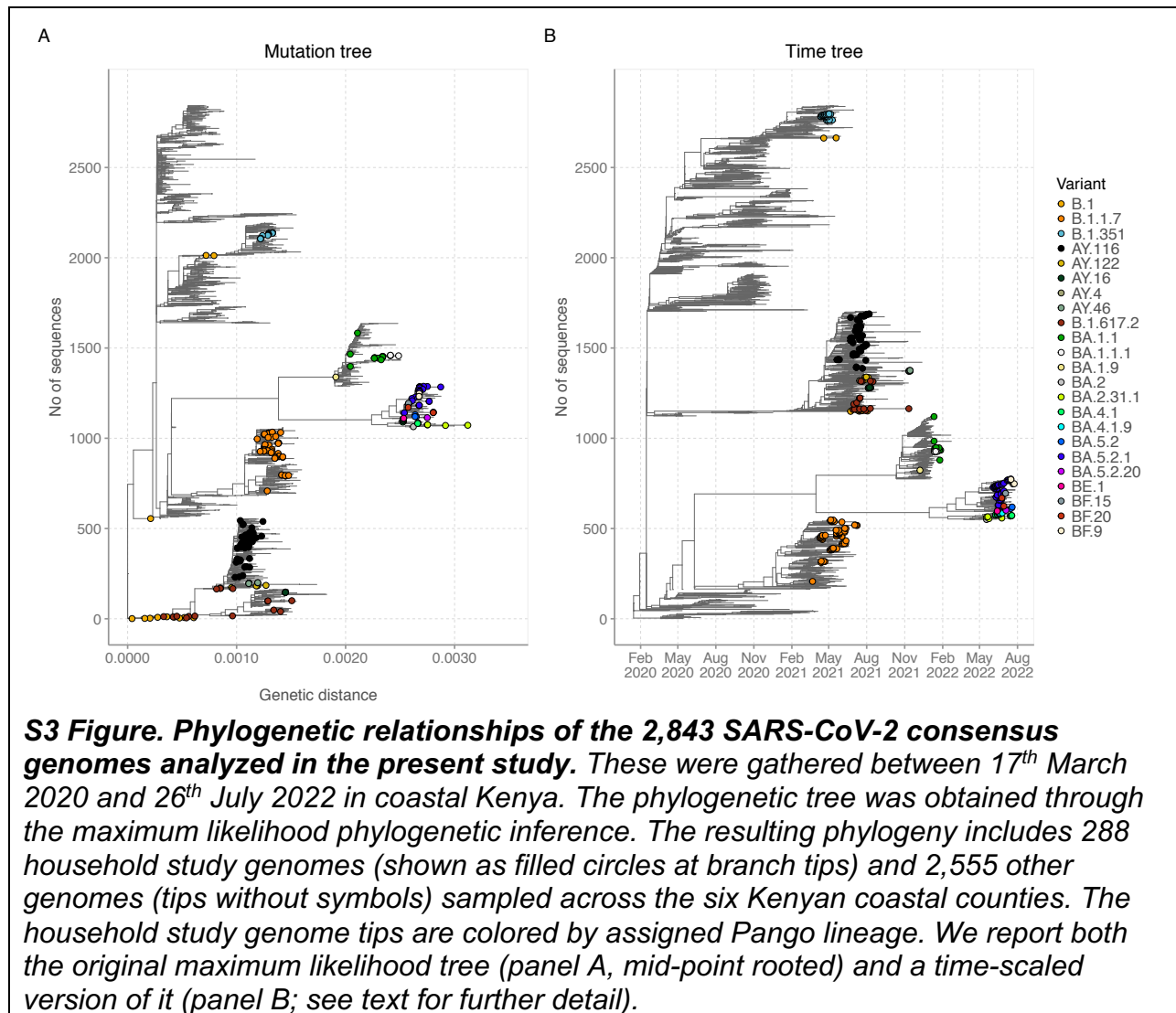
Term	Definition
Household	A dwelling or a group of dwellings where the residents share the same kitchen or cooking space
<i>Index case</i>	The person with the earliest COVID-19-compatible symptoms onset date and laboratory confirmation (RT-PCR) of SARS-CoV-2 infection.
Stringency index (SI)	A measure based on nine government COVID-19 countermeasures response indicators rescaled to values between 0 and 100, with 100 being strictest (Hale et al., 2021). The nine response indicators used to form the SI are (1) school closures, (2) workplace closures, (3) cancellation of public events, (4) restrictions on public gatherings, (5) closures of public transport, (6) stay-at-home requirements, (7) public information campaigns, (8) restrictions on internal movements, and (9) international travel controls.
Multiple virus introduction	There are at least two viruses identified in a household during the follow-up period that appear to have been acquired outside the household, as indicated by genetic similarity with viruses isolated from the surrounding community.
Asymptomatic case	A study participant without current ARI symptoms at the time of collecting the sample or one week prior to that was found to carry the SARS-COV-2 genetic material.

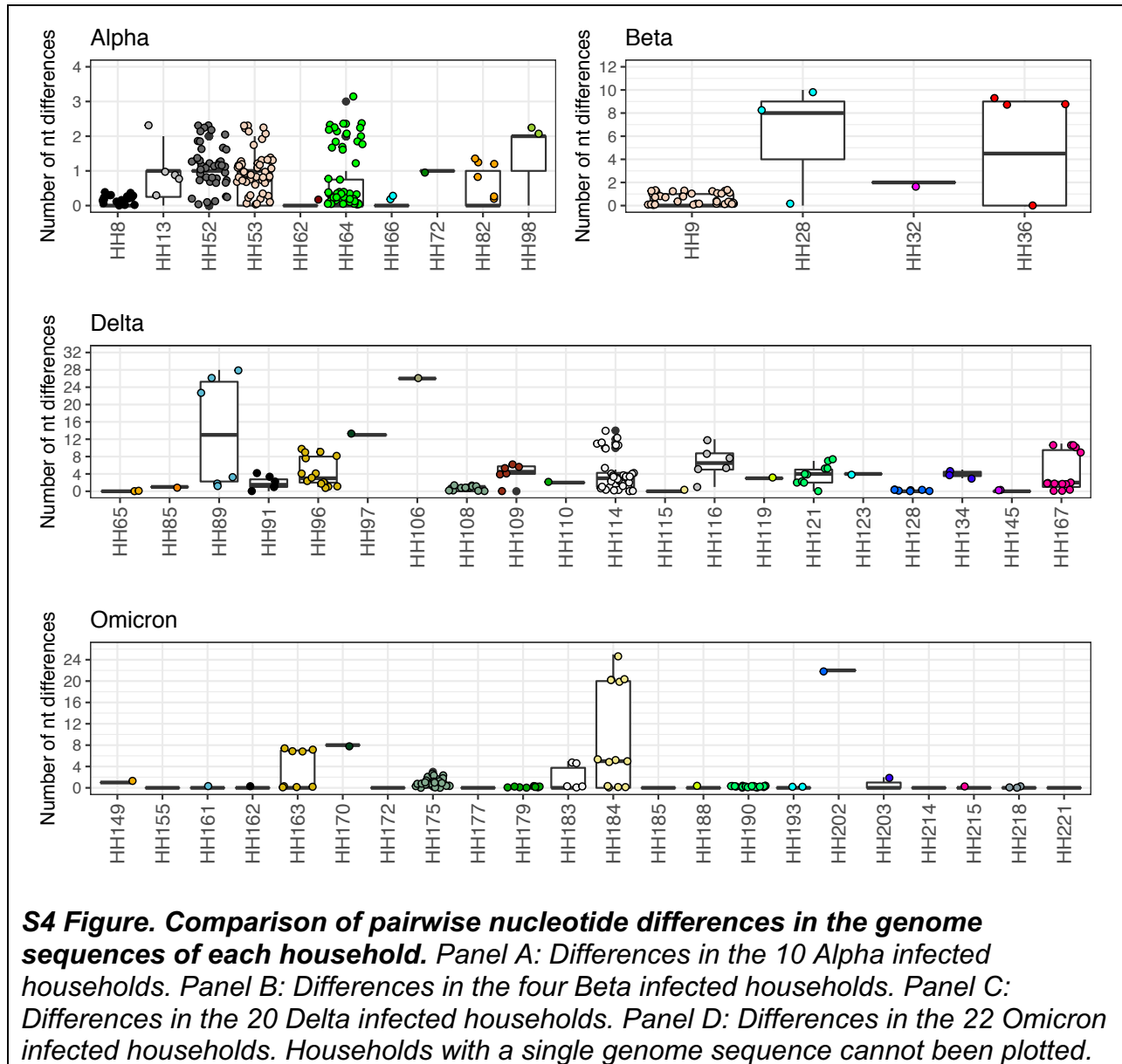


S1 Figure. Sampling timelines and participant positivity in enrolled study households. In total 214 households, 765 participants and 2780 NP/OP swabs were collected. A black circle refers to SARS-CoV-2 negative NP/OP, and a red circle to a SARS-CoV-2 positive NP/OP.



S2 Figure. Study sequencing results summary. Panel A: Comparison the cycle thresholds of failed versus successful sequenced RT-PCR positive NP/OP swabs. Panel B: Temporal distribution of lineages detected in the sequenced samples and their respective assignment into various variants of concern (VOC). Ancestral is represented by lineage B.1. The size of the circle is proportional to the number of genomes.





Appendix: Accession numbers of the genomic sequences from the household study deposited in the GISAID database

GISAID name	GISAID accession number	HH_ID	Pango lineage
hCoV-19/Kenya/C88814/2021	EPI_ISL_6944234	HH7	B.1.1.7
hCoV-19/Kenya/C91180/2021	EPI_ISL_2602534	HH8	B.1.1.7
hCoV-19/Kenya/C91759/2021	EPI_ISL_2602552	HH8	B.1.1.7
hCoV-19/Kenya/C92331/2021	EPI_ISL_2602577	HH8	B.1.1.7
hCoV-19/Kenya/C91760/2021	EPI_ISL_2602553	HH8	B.1.1.7
hCoV-19/Kenya/C91181/2021	EPI_ISL_2602535	HH8	B.1.1.7
hCoV-19/Kenya/C93346/2021	EPI_ISL_2602602	HH8	B.1.1.7
hCoV-19/Kenya/C91761/2021	EPI_ISL_2602554	HH8	B.1.1.7
hCoV-19/Kenya/C91182/2021	EPI_ISL_2602536	HH8	B.1.1.7
hCoV-19/Kenya/C92333/2021	EPI_ISL_2602578	HH8	B.1.1.7
hCoV-19/Kenya/C92271/2021	EPI_ISL_3150137	HH9	B.1.351
hCoV-19/Kenya/C91600/2021	EPI_ISL_2602546	HH9	B.1.351
hCoV-19/Kenya/C91601/2021	EPI_ISL_2602547	HH9	B.1.351
hCoV-19/Kenya/C92272/2021	EPI_ISL_3150138	HH9	B.1.351
hCoV-19/Kenya/C92937/2021	EPI_ISL_2602588	HH9	B.1.351
hCoV-19/Kenya/C92585/2021	EPI_ISL_2602582	HH9	B.1.351
hCoV-19/Kenya/C94719/2021	EPI_ISL_7237336	HH9	B.1.351
hCoV-19/Kenya/C93639/2021	EPI_ISL_2602615	HH9	B.1.351
hCoV-19/Kenya/C93186/2021	EPI_ISL_2602594	HH9	B.1.351
hCoV-19/Kenya/C92733/2021	EPI_ISL_7237332	HH9	B.1
hCoV-19/Kenya/C93763/2021	EPI_ISL_2602616	HH9	B.1.351
hCoV-19/Kenya/C92283/2021	EPI_ISL_3150139	HH11	B.1.1.7
hCoV-19/Kenya/C91774/2021	EPI_ISL_2602555	HH12	B.1.1.7
hCoV-19/Kenya/C92336/2021	EPI_ISL_2602579	HH13	B.1.1.7
hCoV-19/Kenya/C91765/2021	EPI_ISL_2602570	HH13	B.1.1.7
hCoV-19/Kenya/C93179/2021	EPI_ISL_6944188	HH13	B.1.1.7
hCoV-19/Kenya/C92757/2021	EPI_ISL_2602583	HH13	B.1.1.7
hCoV-19/Kenya/C92339/2021	EPI_ISL_2602580	HH26	B.1.351
hCoV-19/Kenya/C94433/2021	EPI_ISL_2602632	HH28	B.1.351
hCoV-19/Kenya/C93185/2021	EPI_ISL_2602593	HH28	B.1.351
hCoV-19/Kenya/C95523/2021	EPI_ISL_3150140	HH28	B.1.351
hCoV-19/Kenya/C94432/2021	EPI_ISL_2602631	HH32	B.1.351
hCoV-19/Kenya/C93178/2021	EPI_ISL_2602612	HH32	B.1.351
hCoV-19/Kenya/C93778/2021	EPI_ISL_2602603	HH36	B.1.351
hCoV-19/Kenya/C94434/2021	EPI_ISL_2602633	HH36	B.1.351
hCoV-19/Kenya/C94773/2021	EPI_ISL_6944125	HH36	B.1.351
hCoV-19/Kenya/C95899/2021	EPI_ISL_2602678	HH36	B.1.351
hCoV-19/Kenya/C95162/2021	EPI_ISL_2602641	HH50	B.1.1.7
hCoV-19/Kenya/C95530/2021	EPI_ISL_3150141	HH52	B.1.1.7
hCoV-19/Kenya/C95531/2021	EPI_ISL_3150142	HH52	B.1.1.7
hCoV-19/Kenya/C95837/2021	EPI_ISL_2602674	HH52	B.1.1.7
hCoV-19/Kenya/C95532/2021	EPI_ISL_3150143	HH52	B.1.1.7
hCoV-19/Kenya/C95838/2021	EPI_ISL_2602675	HH52	B.1.1.7
hCoV-19/Kenya/C95533/2021	EPI_ISL_2602669	HH52	B.1.1.7
hCoV-19/Kenya/C96392/2021	EPI_ISL_3150148	HH52	B.1.1.7
hCoV-19/Kenya/C95534/2021	EPI_ISL_3150144	HH52	B.1.1.7
hCoV-19/Kenya/C96568/2021	EPI_ISL_2602701	HH52	B.1.1.7
hCoV-19/Kenya/C95839/2021	EPI_ISL_2602676	HH52	B.1.1.7
hCoV-19/Kenya/C95564/2021	EPI_ISL_6944206	HH53	B.1.1.7
hCoV-19/Kenya/C97616/2021	EPI_ISL_5797402	HH53	B.1.1.7
hCoV-19/Kenya/C96381/2021	EPI_ISL_3150145	HH53	B.1.1.7
hCoV-19/Kenya/C95565/2021	EPI_ISL_2602670	HH53	B.1.1.7
hCoV-19/Kenya/C95566/2021	EPI_ISL_2602671	HH53	B.1.1.7
hCoV-19/Kenya/C96388/2021	EPI_ISL_3150147	HH53	B.1.1.7
hCoV-19/Kenya/C95567/2021	EPI_ISL_2602672	HH53	B.1.1.7
hCoV-19/Kenya/C96386/2021	EPI_ISL_3150146	HH53	B.1.1.7

hCoV-19/Kenya/C95569/2021	EPI_ISL_2602722	HH53	B.1.1.7
hCoV-19/Kenya/C95570/2021	EPI_ISL_2602723	HH53	B.1.1.7
hCoV-19/Kenya/C95571/2021	EPI_ISL_2602724	HH53	B.1.1.7
hCoV-19/Kenya/C98175/2021	EPI_ISL_2602742	HH62	B.1.1.7
hCoV-19/Kenya/C97303/2021	EPI_ISL_2602721	HH62	B.1.1.7
hCoV-19/Kenya/C98887/2021	EPI_ISL_5797413	HH64	B.1.1.7
hCoV-19/Kenya/C99753/2021	EPI_ISL_3049440	HH64	B.1.1.7
hCoV-19/Kenya/C98636/2021	EPI_ISL_5797411	HH64	B.1.1.7
hCoV-19/Kenya/C98223/2021	EPI_ISL_2602746	HH64	B.1.1.7
hCoV-19/Kenya/C97554/2021	EPI_ISL_2602732	HH64	B.1.1.7
hCoV-19/Kenya/C97866/2021	EPI_ISL_2602737	HH64	B.1.1.7
hCoV-19/Kenya/C98222/2021	EPI_ISL_2602745	HH64	B.1.1.7
hCoV-19/Kenya/C98886/2021	EPI_ISL_7237388	HH64	B.1.1.7
hCoV-19/Kenya/C98888/2021	EPI_ISL_6709405	HH64	B.1.1.7
hCoV-19/Kenya/C98635/2021	EPI_ISL_7237375	HH64	B.1.1.7
hCoV-19/Kenya/C98225/2021	EPI_ISL_2602747	HH64	B.1.1.7
hCoV-19/Kenya/C97868/2021	EPI_ISL_2602738	HH64	B.1.1.7
hCoV-19/Kenya/C97556/2021	EPI_ISL_5797400	HH64	B.1.1.7
hCoV-19/Kenya/C97622/2021	EPI_ISL_2602734	HH65	AY.116
hCoV-19/Kenya/C97982/2021	EPI_ISL_2602739	HH65	AY.116
hCoV-19/Kenya/C98497/2021	EPI_ISL_2602748	HH65	AY.116
hCoV-19/Kenya/C99301/2021	EPI_ISL_3049427	HH66	B.1.1.7
hCoV-19/Kenya/C98894/2021	EPI_ISL_2602762	HH66	B.1.1.7
hCoV-19/Kenya/C99665/2021	EPI_ISL_7237395	HH66	B.1.1.7
hCoV-19/Kenya/C100097/2021	EPI_ISL_3049459	HH66	B.1.1.7
hCoV-19/Kenya/C97315/2021	EPI_ISL_7237367	HH68	B.1.351
hCoV-19/Kenya/C99750/2021	EPI_ISL_7237411	HH69	B.1.1.7
hCoV-19/Kenya/C100103/2021	EPI_ISL_3049460	HH72	B.1.1.7
hCoV-19/Kenya/C99755/2021	EPI_ISL_3049441	HH72	B.1.1.7
hCoV-19/Kenya/C100105/2021	EPI_ISL_3049461	HH80	B.1.1.7
hCoV-19/Kenya/C97548/2021	EPI_ISL_6709497	HH82	B.1.1.7
hCoV-19/Kenya/C98229/2021	EPI_ISL_5797409	HH82	B.1.1.7
hCoV-19/Kenya/C97550/2021	EPI_ISL_2602731	HH82	B.1.1.7
hCoV-19/Kenya/C97980/2021	EPI_ISL_5797404	HH82	B.1.1.7
hCoV-19/Kenya/C97551/2021	EPI_ISL_6709440	HH82	B.1.1.7
hCoV-19/Kenya/C101629/2021	EPI_ISL_3049665	HH85	AY.116
hCoV-19/Kenya/C101330/2021	EPI_ISL_3049550	HH85	AY.116
hCoV-19/Kenya/C103808/2021	EPI_ISL_3150081	HH89	AY.116
hCoV-19/Kenya/C104088/2021	EPI_ISL_7236562	HH89	B.1
hCoV-19/Kenya/C103610/2021	EPI_ISL_3049852	HH89	AY.116
hCoV-19/Kenya/C103611/2021	EPI_ISL_3049833	HH89	B.1.617.2
hCoV-19/Kenya/C103612/2021	EPI_ISL_3049834	HH89	AY.116
hCoV-19/Kenya/C105933/2021	EPI_ISL_7236630	HH90	B.1.617.2
hCoV-19/Kenya/C105699/2021	EPI_ISL_3910032	HH91	AY.116
hCoV-19/Kenya/C103640/2021	EPI_ISL_3150059	HH91	AY.116
hCoV-19/Kenya/C104665/2021	EPI_ISL_7236567	HH91	B.1
hCoV-19/Kenya/C104879/2021	EPI_ISL_6944143	HH91	AY.116
hCoV-19/Kenya/C105700/2021	EPI_ISL_3910035	HH91	AY.116
hCoV-19/Kenya/C101329/2021	EPI_ISL_7236506	HH94	B.1
hCoV-19/Kenya/C102007/2021	EPI_ISL_3049691	HH94	AY.116
hCoV-19/Kenya/C103652/2021	EPI_ISL_7236548	HH94	B.1
hCoV-19/Kenya/C101996/2021	EPI_ISL_7236517	HH96	B.1.617.2
hCoV-19/Kenya/C101998/2021	EPI_ISL_6944187	HH96	AY.116
hCoV-19/Kenya/C102000/2021	EPI_ISL_7236518	HH96	AY.116
hCoV-19/Kenya/C102433/2021	EPI_ISL_3049846	HH96	AY.116
hCoV-19/Kenya/C103609/2021	EPI_ISL_6944136	HH96	AY.116
hCoV-19/Kenya/C102883/2021	EPI_ISL_6944149	HH96	AY.116
hCoV-19/Kenya/C103225/2021	EPI_ISL_3049850	HH97	AY.116
hCoV-19/Kenya/C102438/2021	EPI_ISL_7236525	HH97	B.1.617.2
hCoV-19/Kenya/C103638/2021	EPI_ISL_3150058	HH98	B.1.1.7
hCoV-19/Kenya/C102434/2021	EPI_ISL_3049776	HH98	B.1.1.7
hCoV-19/Kenya/C103187/2021	EPI_ISL_3049826	HH98	B.1.1.7

hCoV-19/Kenya/C104095/2021	EPI_ISL_3150105	HH100	AY.116
hCoV-19/Kenya/C103648/2021	EPI_ISL_3150064	HH106	AY.116
hCoV-19/Kenya/C102387/2021	EPI_ISL_6944141	HH106	B.1.617.2
hCoV-19/Kenya/C103800/2021	EPI_ISL_3150079	HH108	AY.116
hCoV-19/Kenya/C102873/2021	EPI_ISL_3049797	HH108	AY.116
hCoV-19/Kenya/C103801/2021	EPI_ISL_3150080	HH108	AY.116
hCoV-19/Kenya/C102874/2021	EPI_ISL_3049798	HH108	AY.116
hCoV-19/Kenya/C104664/2021	EPI_ISL_3150127	HH108	AY.116
hCoV-19/Kenya/C102872/2021	EPI_ISL_3049796	HH108	AY.116
hCoV-19/Kenya/C101333/2021	EPI_ISL_3049551	HH109	AY.116
hCoV-19/Kenya/C101335/2021	EPI_ISL_3049552	HH109	AY.116
hCoV-19/Kenya/C102004/2021	EPI_ISL_3049751	HH109	AY.116
hCoV-19/Kenya/C101636/2021	EPI_ISL_3049666	HH109	AY.116
hCoV-19/Kenya/C106456/2021	EPI_ISL_6944239	HH110	AY.116
hCoV-19/Kenya/C106338/2021	EPI_ISL_3909866	HH110	AY.116
hCoV-19/Kenya/C103226/2021	EPI_ISL_3049851	HH112	AY.116
hCoV-19/Kenya/C103642/2021	EPI_ISL_3150060	HH114	AY.116
hCoV-19/Kenya/C103643/2021	EPI_ISL_3150061	HH114	AY.116
hCoV-19/Kenya/C104668/2021	EPI_ISL_7236571	HH114	B.1.617.2
hCoV-19/Kenya/C104886/2021	EPI_ISL_7236600	HH114	B.1
hCoV-19/Kenya/C103644/2021	EPI_ISL_3150062	HH114	AY.116
hCoV-19/Kenya/C103848/2021	EPI_ISL_3150086	HH114	AY.116
hCoV-19/Kenya/C103850/2021	EPI_ISL_6944204	HH114	AY.116
hCoV-19/Kenya/C104671/2021	EPI_ISL_6944140	HH114	B.1.617.2
hCoV-19/Kenya/C103646/2021	EPI_ISL_3150063	HH114	AY.116
hCoV-19/Kenya/C104887/2021	EPI_ISL_6944213	HH114	AY.116
hCoV-19/Kenya/C104672/2021	EPI_ISL_3150128	HH115	B.1.617.2
hCoV-19/Kenya/C104673/2021	EPI_ISL_3150129	HH115	AY.16
hCoV-19/Kenya/C104674/2021	EPI_ISL_3150130	HH116	AY.116
hCoV-19/Kenya/C104676/2021	EPI_ISL_3150131	HH116	AY.116
hCoV-19/Kenya/C105216/2021	EPI_ISL_6709422	HH116	B.1.617.2
hCoV-19/Kenya/C104873/2021	EPI_ISL_6944124	HH116	AY.116
hCoV-19/Kenya/C106194/2021	EPI_ISL_3910162	HH119	AY.116
hCoV-19/Kenya/C105748/2021	EPI_ISL_7236622	HH119	AY.116
hCoV-19/Kenya/C104727/2021	EPI_ISL_7236591	HH120	B.1.617.2
hCoV-19/Kenya/C104889/2021	EPI_ISL_6944123	HH121	AY.116
hCoV-19/Kenya/C105765/2021	EPI_ISL_6944205	HH121	AY.116
hCoV-19/Kenya/C106395/2021	EPI_ISL_7236665	HH121	B.1
hCoV-19/Kenya/C106189/2021	EPI_ISL_3910159	HH121	AY.116
hCoV-19/Kenya/C104890/2021	EPI_ISL_7236611	HH121	B.1.617.2
hCoV-19/Kenya/C104892/2021	EPI_ISL_6944192	HH121	AY.116
hCoV-19/Kenya/C105691/2021	EPI_ISL_7236621	HH122	B.1
hCoV-19/Kenya/C107193/2021	EPI_ISL_7236708	HH123	B.1.617.2
hCoV-19/Kenya/C106832/2021	EPI_ISL_7236700	HH123	B.1.617.2
hCoV-19/Kenya/C106324/2021	EPI_ISL_7236651	HH127	B.1.617.2
hCoV-19/Kenya/C106334/2021	EPI_ISL_3909859	HH128	AY.116
hCoV-19/Kenya/C106458/2021	EPI_ISL_3909896	HH128	AY.116
hCoV-19/Kenya/C106697/2021	EPI_ISL_3909947	HH128	AY.116
hCoV-19/Kenya/C106335/2021	EPI_ISL_3909862	HH128	AY.116
hCoV-19/Kenya/C106589/2021	EPI_ISL_3909920	HH128	AY.116
hCoV-19/Kenya/C106459/2021	EPI_ISL_3909900	HH128	AY.116
hCoV-19/Kenya/C106696/2021	EPI_ISL_3909942	HH128	AY.116
hCoV-19/Kenya/C106181/2021	EPI_ISL_7236638	HH129	B.1
hCoV-19/Kenya/C106386/2021	EPI_ISL_3909872	HH129	AY.116
hCoV-19/Kenya/C106630/2021	EPI_ISL_3909936	HH133	AY.122
hCoV-19/Kenya/C106262/2021	EPI_ISL_3910200	HH134	AY.122
hCoV-19/Kenya/C106540/2021	EPI_ISL_7236687	HH134	B.1
hCoV-19/Kenya/C106397/2021	EPI_ISL_3909875	HH134	AY.122
hCoV-19/Kenya/C106263/2021	EPI_ISL_6944157	HH134	AY.122
hCoV-19/Kenya/C106828/2021	EPI_ISL_7236695	HH142	B.1.617.2
hCoV-19/Kenya/C103805/2021	EPI_ISL_7236554	HH143	B.1
hCoV-19/Kenya/C113902/2022	EPI_ISL_11116830	HH149	BA.1.1

hCoV-19/Kenya/C113903/2022	EPI_ISL_11116831	HH149	BA.1.1
hCoV-19/Kenya/C113981/2022	EPI_ISL_11116843	HH155	BA.1.1
hCoV-19/Kenya/C114051/2022	EPI_ISL_11116848	HH155	BA.1.1
hCoV-19/Kenya/C114287/2022	EPI_ISL_11116859	HH155	BA.1.1
hCoV-19/Kenya/C113966/2022	EPI_ISL_11116840	HH156	BA.1.1.1
hCoV-19/Kenya/C113980/2022	EPI_ISL_11116842	HH157	BA.1.1
hCoV-19/Kenya/C113972/2022	EPI_ISL_11116841	HH158	BA.1.1
hCoV-19/Kenya/C114317/2022	EPI_ISL_11116862	HH161	BA.1.1
hCoV-19/Kenya/C114418/2022	EPI_ISL_11116864	HH161	BA.1.1
hCoV-19/Kenya/C113936/2022	EPI_ISL_11116838	HH162	BA.1.1.1
hCoV-19/Kenya/C114136/2022	EPI_ISL_11116853	HH162	BA.1.1.1
hCoV-19/Kenya/C114017/2022	EPI_ISL_11116846	HH162	BA.1.1.1
hCoV-19/Kenya/C114222/2022	EPI_ISL_11116857	HH163	BA.1.1
hCoV-19/Kenya/C114133/2022	EPI_ISL_11116852	HH163	BA.1.1
hCoV-19/Kenya/C113933/2022	EPI_ISL_11116837	HH163	BA.1.1
hCoV-19/Kenya/C114020/2022	EPI_ISL_11116847	HH163	BA.1.1
hCoV-19/Kenya/C114359/2022	EPI_ISL_11116863	HH163	BA.1.1
hCoV-19/Kenya/C111708/2021	EPI_ISL_6709504	HH167	AY.46
hCoV-19/Kenya/C112904/2021	EPI_ISL_11116699	HH167	BA.1.9
hCoV-19/Kenya/C111861/2021	EPI_ISL_6944217	HH167	AY.46
hCoV-19/Kenya/C111709/2021	EPI_ISL_6709400	HH167	B.1.617.2
hCoV-19/Kenya/C111863/2021	EPI_ISL_6944218	HH167	AY.46