

1 **SUPPLEMENTARY INFORMATION**

2 **Supplementary Tables S1-S5**

3 **Table S1. Demographic characteristics of vaccine breakthrough cases**
 4 **compared to controls included in main correlates analysis.**

	Cases (%)	Controls (%)
Total N	32	247
Age (years)		
Median	43	43
Interquartile range	31.5-49	34-53.5
Range	22-72	22-71
Sex		
Female	26 (81.25%)	180 (72.9%)
Male	6 (18.75%)	67 (27.1%)
Ethnicity (self-reported)		
White	26 (81.3%)	175 (70.9%)
Asian	1 (3.1%)	20 (8.1%)
Other	1 (3.1%)	11 (4.5%)
Unreported	4 (12.5%)	41 (16.6%)
BMI (kg/m²)		
Not obese (<30)	11 (34.4%)	98 (39.7%)
Obese (≥30)	2 (6.3%)	9 (3.6%)
Unreported	19 (59.4%)	140 (56.7%)
Vaccine regimen		
AZD1222	9 (28.1%)	32 (13.0%)
BNT162b2 (short interval ¹)	2 (6.3%)	58 (23.5%)
BNT162b2 (long interval ²)	21 (65.6%)	157 (63.6%)
Infection history		
Naïve	26 (81.25)	147 (59.5%)
Convalescent	6 (18.75%)	100 (40.5%)

5 ¹Short interval represents 2-5 weeks between first and second dose.

6 ²Long interval represents 6-14 weeks between first and second dose.

7 **Table S2. Number and key characteristics of participants sampled for each**
 8 **assay.**

Immune parameter	Assay	Group	Number of individuals	
			Cases (total N=32)	Controls (total N=247)
IgG binding	Meso Scale Discovery assay (MSD)	Total	32	200
		AZ/Naive	7	23
		AZ/Convalescent	2	9
		Pfizer/Naive	19	100
		Pfizer/Convalescent	4	68
IFN γ response	T cell ELISpot (WT peptide pools)	Total	24	191
		AZ/Naive	5	10
		AZ/Convalescent	0	1
		Pfizer/Naive	17	104
		Pfizer/Convalescent	2	76
	T cell ELISpot (Delta peptide pools)	Total	9	25
		AZ/Naive	5	5
		AZ/Convalescent	0	0
		Pfizer/Naive	3	13
		Pfizer/Convalescent	1	7
Neutralising antibody	Live virus microneutralisation assay	Total	21	41
		AZ/Naive	3	7
		AZ/Convalescent	1	0
		Pfizer/Naive	14	19
		Pfizer/Convalescent	3	15
B cell memory	B cell FluoroSpot	Total	10	11
		AZ/Naive	2	2
		AZ/Convalescent	0	0
		Pfizer/Naive	8	9
		Pfizer/Convalescent	0	0
CD4+ and CD8+ T cell response	Intracellular cytokine staining (ICS)	Total	12	12
		AZ/Naive	2	2
		AZ/Convalescent	0	0
		Pfizer/Naive	10	10
		Pfizer/Convalescent	0	0

9 **Table S3. Demographic characteristics of vaccine breakthrough cases**
 10 **compared to matched controls included in B cell FluoroSpot and intracellular**
 11 **cytokine staining assays.**
 12 All individuals were infection-naïve before vaccination.

	Cases	Controls
B cell FluoroSpot assay		
Total N	10	11
Age (years)		
Median	45	42
Interquartile range	39.8-49	40-51.5
Range	28-63	22-66
Sex		
Female	9	9
Male	1	2
Vaccine regimen		
AZD1222	2	2
BNT162b2	8	9
Intracellular cytokine staining (ICS) assay		
Total N	12	12
Age (years)		
Median	40.5	41.5
Interquartile range	31.8-51	30-47.8
Range	24-72	22-66
Sex		
Female	11	11
Male	1	1
Vaccine regimen		
AZD1222	2	2
BNT162b2	10	10

13 **Table S4. Antibodies used for intracellular cytokine staining assay.**

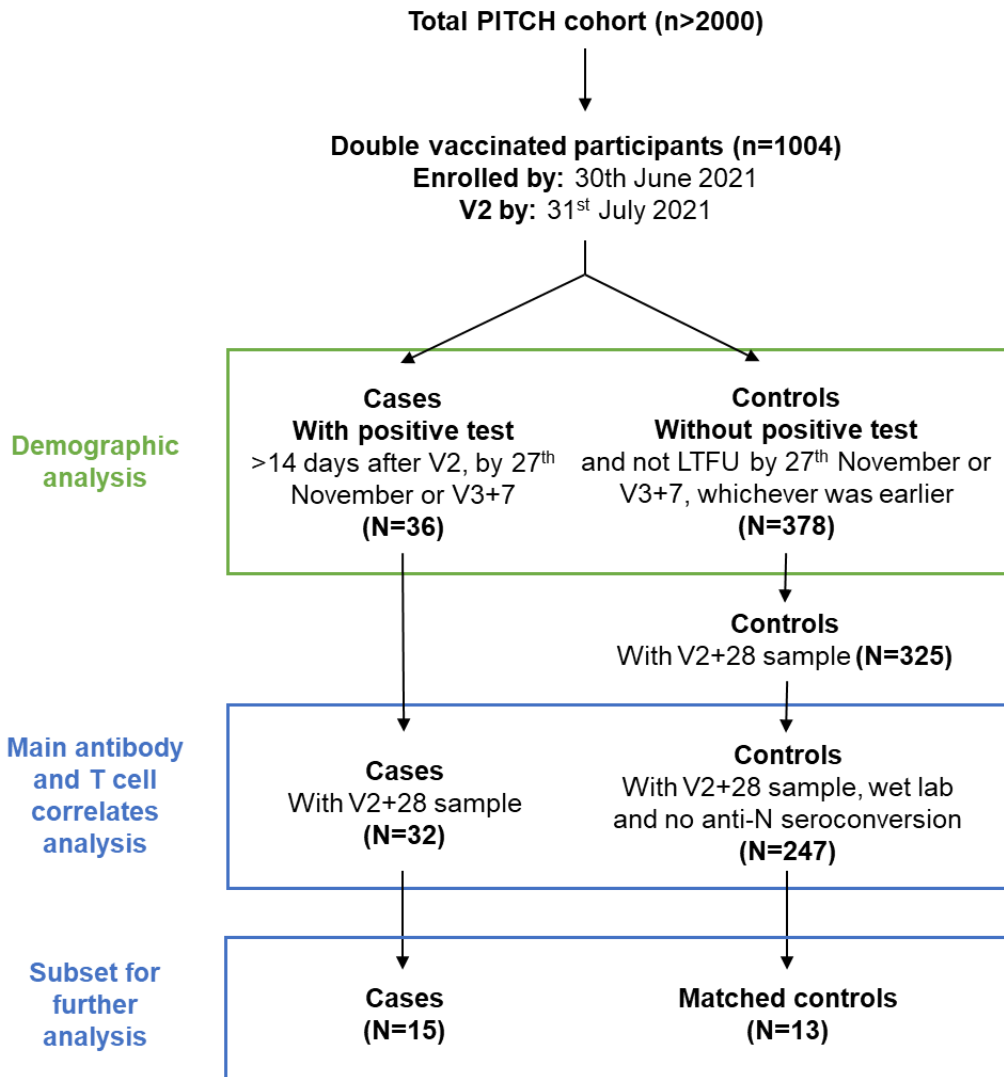
Marker name	Fluorochrome	Clone	Species reactivity	Host species	Isotype	Manufacturer	Catalogue number	Dilution used
CD3	PerCP	UCHT1	Human	Mouse	IgG1,k	Biolegend	300428	100
CD4	APC	RPA-T4	Human	Mouse	IgG1,k	Biolegend	300514	200
CD8	BV510	RPA-T8	Human	Mouse	IgG1,k	Biolegend	301048	600
CD14	APC-Fire750	M5E2	Human	Mouse	IgG2a,k	Biolegend	301854	200
IFN γ	PE	4S.B3	Human	Mouse	IgG1,k	Biolegend	502508	50
TNF	FITC	MAb11	Human	Mouse	IgG1,k	Biolegend	502906	40
IL-2	PE-Cy7	MQ1-17H12	Human	Rat	IgG2a,k	eBioscience	25-7029-41	100

14 **Table S5. Details of viruses used for live virus microneutralisation assay.**

Lineage	Mutations present in Spike	Source
Ancestral [hCoV19/England/02/2020]		Public Health England, UK
Delta [MS066352H]	T19R, K77R, G142D, Δ156-157/R158G, A222V, L452R, T478K, D614G, P681R, D950N	Prof. Wendy Barclay, Imperial College London, London, UK via the Genotype-to-Phenotype National Virology Consortium (G2P-UK)

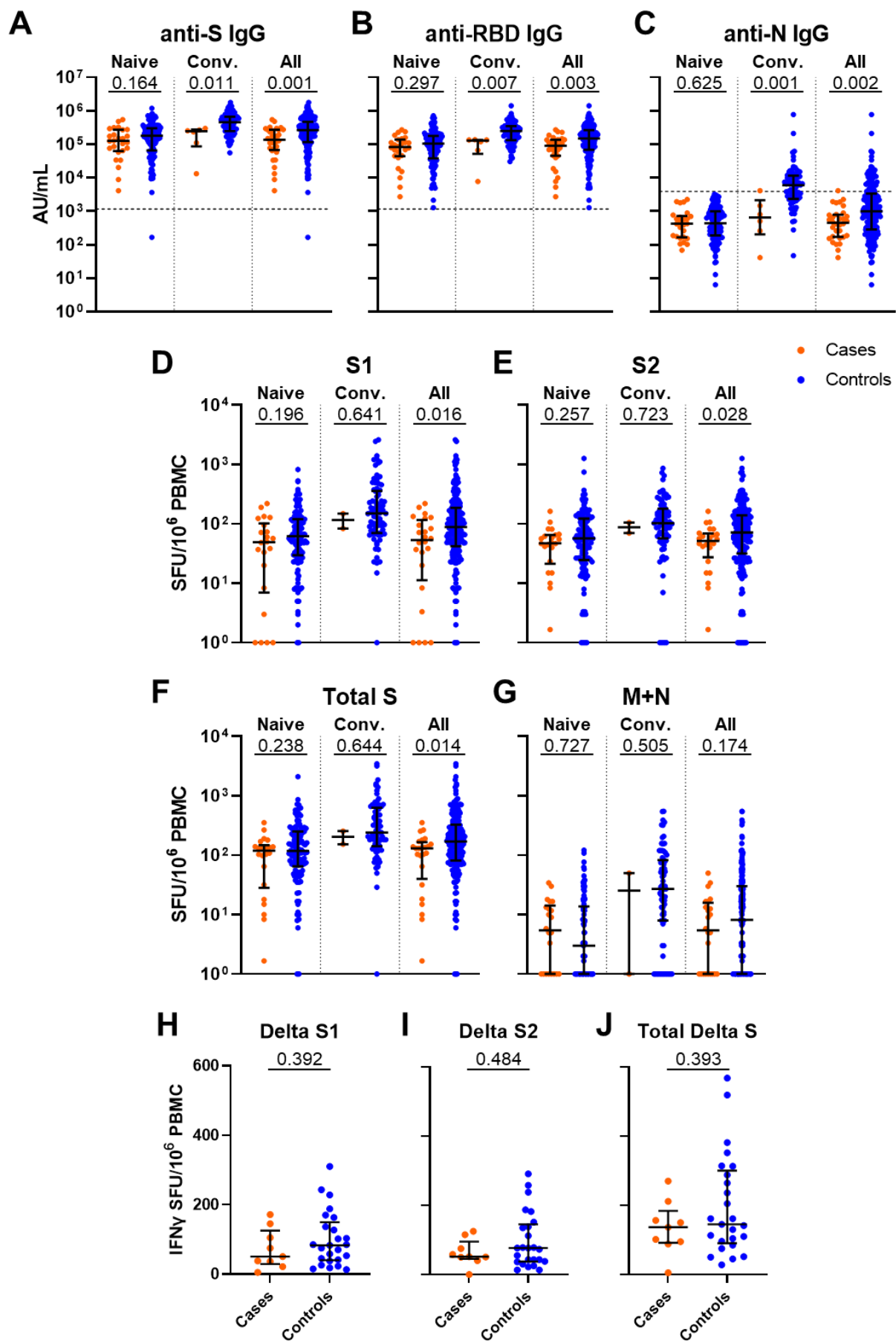
15

16 **Supplementary Figures S1-S4**



17 **Figure S1. Flow chart indicating overall design of this study within the PITCH**
 18 **cohort.**

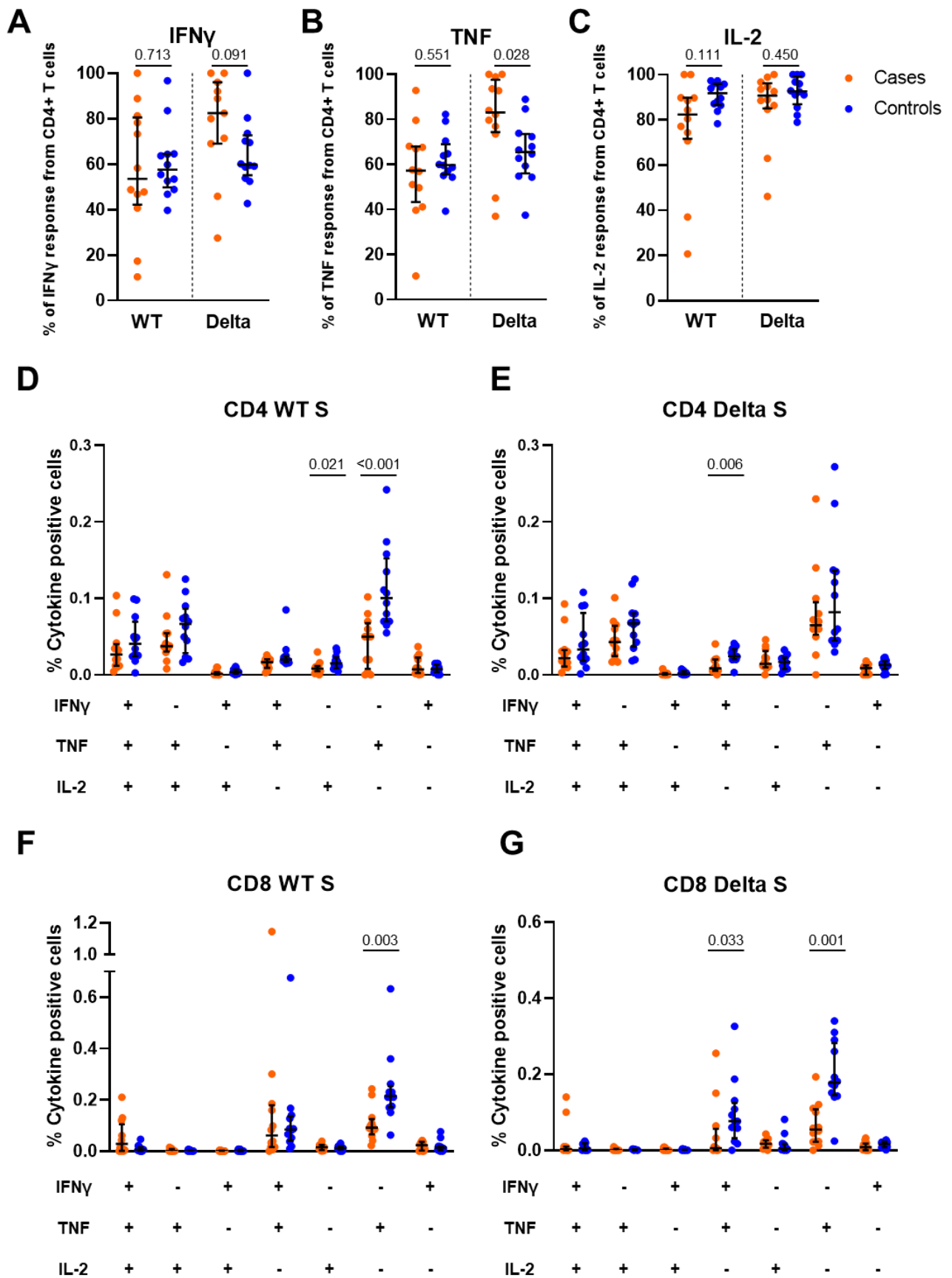
19 V2 refers to second vaccination. V2+28 refers to 28 days after the second vaccine
 20 dose. V3+7 refers to 7 days after the third vaccine dose. LTFU refers to lost to
 21 follow-up.



22 Figure S2. Comparison of antibody binding and T cell responses between cases and controls according to infection history, and T cell responses to
 23 Delta spike peptide pools between cases and controls, at 28 days after second
 24

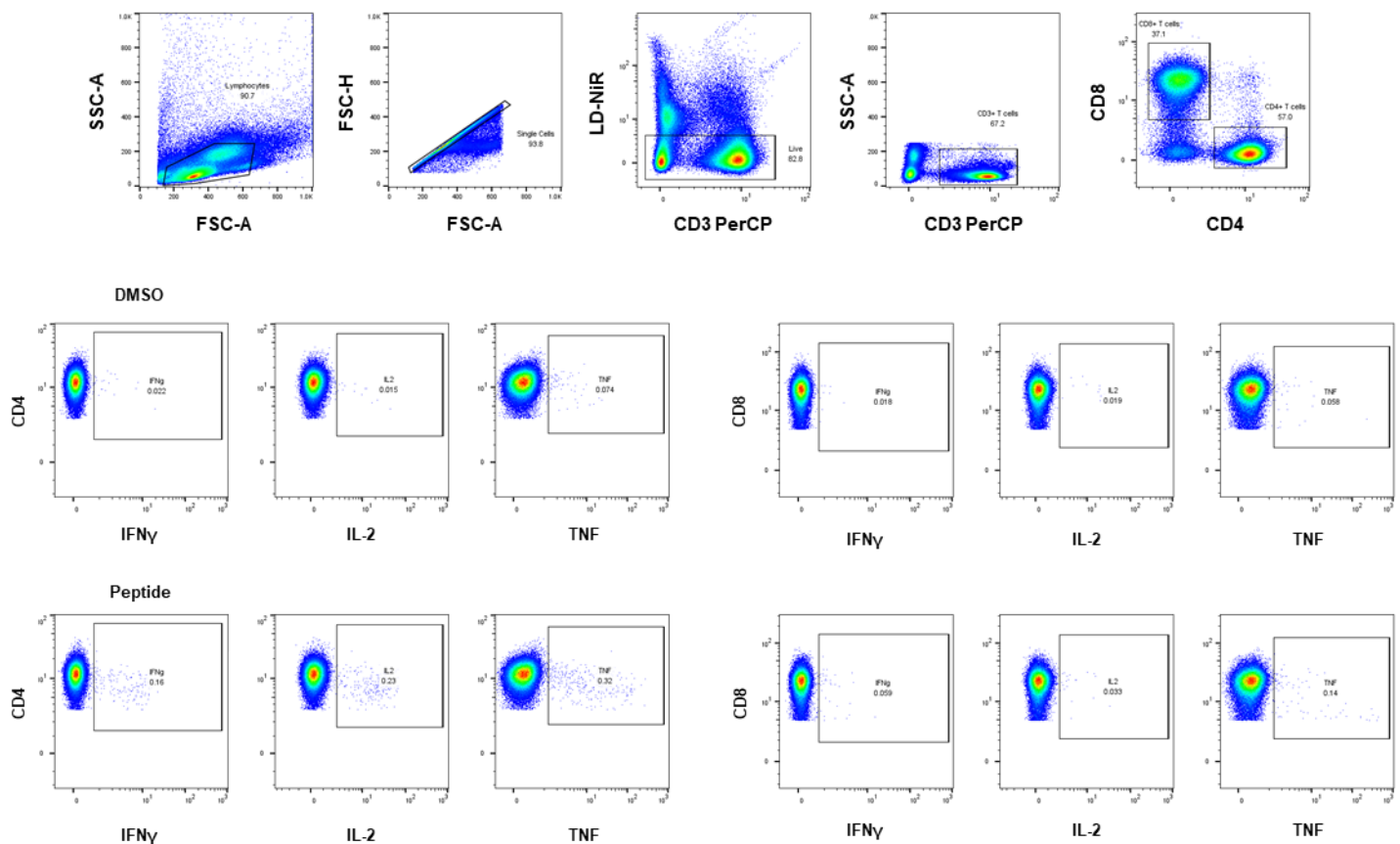
25 **vaccine dose.**

26 **(A)** Ancestral SARS-CoV-2 spike- (S), **(B)** receptor binding domain- (RBD) and **(C)**
27 nucleoprotein- (N) specific IgG binding titre in cases and controls as measured by
28 MSD, according to infection history. Dashed lines represent threshold for positive
29 response (SARS-CoV-2 S IgG 1160 AU/mL, RDB IgG 1169 AU/mL, N IgG 3874
30 AU/mL). Naïve represents those with no history of prior infection (cases n=26,
31 controls n=123). Convalescent (Conv) represents those with a history of infection
32 prior to vaccination (cases n=6, controls n=77). All represents summation of Naïve
33 and Conv participants (cases n=32, controls n=200). **(D)** T cell responses to peptide
34 pools representing ancestral SARS-CoV-2 S1, **(E)** S2, **(F)** total S (summation of S1
35 and S2 responses) and **(G)** membrane (M) and nucleoprotein (N) in cases and
36 controls as measured by IFN γ ELISpot assay, according to infection history. Naïve
37 cases n=22, controls n=114. Conv cases n=2, controls n=77. All cases n=24,
38 controls n=191. Values of 0 are replaced with 1 for representation on the logarithmic
39 scale. **(H)** T cell responses to peptide pools representing Delta (B1.617.2) SARS-
40 CoV-2 S1, **(I)** S2 and **(J)** Total Delta S (summation of Delta S1 and S2 responses) in
41 a subset of cases (n=9) and controls (n=25), as measured by IFN γ ELISpot assay.
42 Orange circles represent cases, blue circles represent controls. Bars represent
43 median of each group. Error bars represent interquartile range. Two-tailed p-values
44 derived from Mann-Whitney U tests shown above linking lines.



45 **Figure S3. Comparison of contribution of CD4+ T cell populations to cytokine**
 46 **responses and CD4+ and CD8+ T cell polyfunctionality between cases and**
 47 **matched controls at 28 days after second vaccine dose.**
 48 **(A)** T cell populations responsible for expression of IFN γ , **(B)** TNF and **(C)** IL-2,

49 calculated by dividing the number of CD4+ cells expressing that cytokine after
50 background subtraction, divided by the total number of CD4+ and CD8+ cells
51 expressing that cytokine after background subtraction. **(D)** T cell polyfunctionality as
52 assessed by combination of expression of IFN γ , IL-2 and TNF cytokines in CD4+
53 cells in response to ancestral (WT) spike, **(E)** CD4+ cells in response to Delta spike,
54 **(F)** CD8+ cells in response to WT spike and **(G)** CD8+ cells in response to Delta
55 spike peptide pools. Orange circles represent cases, blue circles represent controls.
56 Bars represent median of each group. Error bars represent interquartile range. Two-
57 tailed p-values derived from Mann-Whitney U tests shown above linking lines. For
58 clarity, only p-values <0.05 shown in (D-G).



59 **Figure S4. Gating strategy for intracellular cytokine staining (ICS) assay.**
60 Lymphocytes were gated using forward scatter (FSC)-area (A) and side scatter
61 (SSC)-A. FSC-A and FSC-height (H) were then used to identify single cells. Live
62 CD3+ T cells were gated by first excluding dead cells on the basis of exclusion of
63 Live Dead stain (LD-NiR) and then gating on positivity for CD3 PerCP. CD4+ and
64 CD8+ subsets were identified based on staining for CD4 APC and CD8 BV510.
65 Expression of IFN γ , IL-2 and TNF was identified in the CD4+CD8- and CD4-CD8+
66 gates. Representative gating shown for one sample for the negative control (DMSO)
67 and ancestral S (peptide) stimulation conditions.

68 **Secondary Author List**

69 Crick COVID Immunity Pipeline consortium authors, all affiliated with The Francis
70 Crick Institute, London, UK:

71 Titilayo Abiola, Janet Abreu, Lorin Adams, Ana Agau-Doce, Karen Ambrose, Neil
72 Bailey, Philip Bawumia, Annabel Borg, Mercedes Cabrera Jarana, Simon Caidan,
73 Marie Caulfield, Bobbi Clayton, Ilenia D'Angelo, Giulia Dowgier, Steve Gamblin,
74 Sonia Gandhi, Mike Gavrielides, Ruth Harvey, Lou Herman, Agnieszka Hobbs, Philip
75 Hobson, Jag Kandasamy, Svend Kjaer, Murad Miah, Mauro Miranda, Sina Namjou,
76 Nicola O'Reilly, Meghan Poulten, Martina Ragno, Mahbubur Rahman, Andrew
77 Riddell, Chloë Roustan, Emma Russell, Samuel Sade, Sandeep Sandhar, Chelsea
78 Sawyer, Vanessa Silva, Callie Smith, Amy Strange, Charles Swanton, Tom Taylor,
79 Rachel Ulferts, Scott Warchal.

80 PITCH Consortium authors:

Full Name	Institution
Jenna Ablott	Sheffield Teaching Hospitals NHS Foundation Trust
Sandra Adele	University of Oxford
Zahra Ahmed	University of Birmingham
Saly Al-Taei	University of Birmingham
Ali Amini	University of Oxford
Adrienn Angyal	University of Sheffield
M. Azim Ansari	University of Oxford
Rachel Anslow	University of Oxford
Ana Atti	UK Health Security Agency
James Austin	University of Liverpool
Angela Bailey	Newcastle upon Tyne Hospitals NHS Foundation Trust
Natalie A. Barratt	University of Sheffield
Martin Bayley	University of Sheffield
Sagida Bibi	University of Oxford
Lucy H. Booth	University of Cambridge
Alice Bridges-Webb	University of Oxford
Rebecca Brown	University of Sheffield
Holly Caborn	Sheffield Teaching Hospitals NHS Foundation Trust
Jeremy Chalk	University of Oxford
Anu Chawla	Liverpool University Hospitals NHS Foundation Trust
Elizabeth Clutterbuck	University of Oxford
Christopher P. Conlon	University of Oxford
Andrew Cross	Liverpool University Hospitals NHS Foundation Trust
Debbie Cross	University of Oxford
Sophie Davies	University of Oxford
Catherine de Lara	University of Oxford
Wanwisa Dejnirattisai	University of Oxford

Christina Dold	University of Oxford
Thomas M. Drake	University of Edinburgh
Elena Efstathiou	University of Birmingham
David Eyre	University of Oxford
Alex Fairman	University of Sheffield
Sian Faustini	University of Birmingham
Andrew Filby	Newcastle University
Sarah Foulkes	UK Health Security Agency
John Frater	University of Oxford
Lisa Frending	University of Oxford
Oliver Galgut	University of Birmingham
Siobhan Gardiner	University of Oxford
Philip Goulder	University of Oxford
Jessica Gregory	Sheffield Teaching Hospitals NHS Foundation Trust
Irina Grouneva	University of Sheffield
Lotta Gustafsson	Sheffield Teaching Hospitals NHS Foundation Trust
Carl-Philipp Hackstein	University of Oxford
Callum Halstead	University of Oxford
Sophie Hambleton	Newcastle University
Muzlifah Haniffa	Newcastle University
Helen Hanson	Newcastle upon Tyne Hospitals NHS Foundation Trust
Alexander Hargreaves	University of Oxford
Kate Harrington	Sheffield Teaching Hospitals NHS Foundation Trust
Jenny Haworth	Newcastle upon Tyne Hospitals NHS Foundation Trust
Carole Hays	Newcastle upon Tyne Hospitals NHS Foundation Trust
Phoebe Hazenberg	Newcastle upon Tyne Hospitals NHS Foundation Trust
Luisa M. Hering	University of Liverpool
Emily C. Horner	University of Cambridge
Hailey Hornsby	University of Sheffield
Fatima Mariam Ilyas	Sheffield Teaching Hospitals NHS Foundation Trust
Jasmin Islam	UK Health Security Agency
Anni Jämsén	University of Oxford
Katie Jeffery	University of Oxford
Sile Johnson	University of Oxford
Geraldine Jones	Newcastle upon Tyne Hospitals NHS Foundation Trust
Mwila Kasanyinga	University of Oxford
Sinead Kelly	Newcastle upon Tyne Hospitals NHS Foundation Trust
Maqsood Khan	Sheffield Teaching Hospitals NHS Foundation Trust
Jon Kilby	University of Sheffield
Rosemary Kirk	Sheffield Teaching Hospitals NHS Foundation Trust
Allan Lawrie	University of Sheffield
Lauren Lett	University of Liverpool
Chang Liu	University of Oxford
Alison Lye	Sheffield Teaching Hospitals NHS Foundation Trust
Tom Malone	University of Oxford
Spyridoula Marinou	University of Oxford

Chloe Matthewman	Sheffield Teaching Hospitals NHS Foundation Trust
Philippa C. Matthews	Francis Crick Institute
David McDonald	Newcastle University
Jessica McNeill	Sheffield Teaching Hospitals NHS Foundation Trust
Gracie Mead	University of Oxford
Naomi Meardon	Sheffield Teaching Hospitals NHS Foundation Trust
Alexander J. Mentzer	University of Oxford
Shagun Misra	Sheffield Teaching Hospitals NHS Foundation Trust
Juthathip Mongkolsapaya	University of Oxford
Sam M. Murray	University of Oxford
Jeremy M. Nell	Newcastle upon Tyne Hospitals NHS Foundation Trust
Alexander R. Nicols	Newcastle University
Christopher Norman	Sheffield Teaching Hospitals NHS Foundation Trust
Ane Ogbe	University of Oxford
Juyeon Park	University of Oxford
Brendan A.I. Payne	Newcastle upon Tyne Hospitals NHS Foundation Trust
Eloise Phillips	University of Oxford
Gareth Platt	University of Liverpool
Andrew J. Pollard	University of Oxford
Sonia Poolan	Newcastle upon Tyne Hospitals NHS Foundation Trust
Nicholas Provine	University of Oxford
Chloe Roddis	Sheffield Teaching Hospitals NHS Foundation Trust
Stefan Roman	Sheffield Teaching Hospitals NHS Foundation Trust
Leigh Romaniuk	Newcastle upon Tyne Hospitals NHS Foundation Trust
Patpong Rongkard	University of Oxford
Sarah L. Rowland-Jones	University of Sheffield
Ayoub Saei	UK Health Security Agency
Jose Schutter	University of Sheffield
Gavin Screatton	University of Oxford
Adrian Shields	University of Birmingham
Laura Silva Reyes	University of Oxford
Donal Skelly	University of Oxford
Nikki Smith	University of Sheffield
Jarmila S. Spegarova	Newcastle University
Gareth Stephens	Sheffield Teaching Hospitals NHS Foundation Trust
Emily Stephenson	Newcastle University
Rachel Stimpson	Sheffield Teaching Hospitals NHS Foundation Trust
Scarlett Strickland	Sheffield Teaching Hospitals NHS Foundation Trust
Krishanthi Subramaniam	University of Liverpool
Piyada Supasa	University of Oxford
Chloe Tanner	University of Birmingham
Lydia J. Taylor	Newcastle University
Chitra Tejpal	University of Oxford
James E.D. Thaventhiran	University of Cambridge
Nicola Tinker	Sheffield Teaching Hospitals NHS Foundation Trust
Tom Tipton	University of Oxford

Neal Townsend	University of Birmingham
Simon Travis	University of Oxford
Nicola Trewick	Newcastle University
Stephanie Tucker	Newcastle University
Aekkachai Tuekprakhon	University of Oxford
Helena Turton	University of Sheffield
Jessica K. Tyerman	Newcastle University
Zara Valiji	University of Oxford
Lisa Watson	Sheffield Teaching Hospitals NHS Foundation Trust
Rachel Whitham	Sheffield Teaching Hospitals NHS Foundation Trust
Jayne Willson	Sheffield Teaching Hospitals NHS Foundation Trust
Barbara Wilson	Newcastle University
Joseph D. Wilson	University of Oxford
Steven Wood	University of Sheffield
Daniel G. Wootton	University of Liverpool
Amira A.T. Zawia	Sheffield Teaching Hospitals NHS Foundation Trust
Martha Zewdie	University of Oxford
Peijun Zhang	University of Sheffield