

# Supplementary File

## Table of contents

- 1. Description of trial groups ..... 2
- 2. Study randomisation..... 3
  - Table S1. Distribution of study units by Baseline MgSO<sub>4</sub>. ..... 3
- 3. Economic evaluation ..... 4
  - Table S2. Estimated lifetime costs and QALYs per patient associated with MgSO<sub>4</sub> treatment..... 4
  - Table S3. Point estimates, probability distributions, and source of parameter estimates used in the probabilistic analysis. .... 5
  - Table S4. Mean unit-level funded costs for the enhanced support programme and NPP. .... 6
  - Table S5. Mean lifetime QALYs and costs per baby by type of birth and trial arm. .... 7
  - Table S6. Probabilistic Analysis results of the enhanced support programme cost-effectiveness..... 8
  - Figure S1. Cost-effectiveness plane of PReCePT Enhanced Support versus National PreCePT Programme Support..... 9
  - Figure S2. Cost-effectiveness acceptability curve of PReCePT Enhanced Support versus National PReCePT Programme Support. .... 10
- 4. MgSO<sub>4</sub> over time ..... 11
  - Figure S3: MgSO<sub>4</sub> uptake and data completeness over time ..... 11
- 5. Qualitative interviews topic guide ..... 12
- 6. A description of units participating in qualitative interviews ..... 14

## 1. Description of trial groups

	<b>NPP support (Control)</b>	<b>Enhanced support (Intervention)</b>
PReCePT QI toolkit	Clinical guidance; Pre-term labour proforma template; Staff training presentations; Parent leaflet; Posters for display on the unit to raise staff awareness; A QI Learning Log; Project Dashboard; Pens, magnets, lanyards and other aide-mémoires to promote MgSO <sub>4</sub> to unit staff (if purchased)	As per standard support group
QI training	Local level (AHSN or unit level) QI training and guidance to adapt materials for local use, cascaded from AHSN	As per standard support group
Regional support	Support from a AHSN level clinical lead (obstetrician and neonatologist) and AHSN lead	As per standard support group
Local clinical champion	Local obstetrician and neonatologist identified by unit to guide and oversee local implementation	As per standard support group (named as joint PI, at discretion of local site)
Funded time for local midwife champion	Funded time of up to 90 hours per unit (on average 2 hours per week)	As per standard support, PLUS funding for up to 90 extra hours backfill, on average over 12 months, to enable the midwife to embed the QI toolkit within their team
Funded time for local neonatologist champion	None	Funded time for a local neonatologist PI , working on average 0.5 PA (2 hours) per week over 12 months, to provide clinical leadership in local unit (fixed term contract or secondment from an NHS organisation) 0.5 PA backfill may be split with obstetrician PI, at discretion of local site
QI coaching	None	Structured coaching in local unit from an experienced QI coach. To include: First visit where the QI coach will work with local unit to create a bespoke implementation plan; Telephone coaching in liaison with the local champion(s), with occasional face to face visits as logistics permit; Ongoing dedicated support to help embed the QI toolkit within local unit; Final visit to support local unit to tie up data collection and plan for ongoing sustainability
Learning events	Shared learning events between AHSN managers leading the NPP in their area	Funding for up to three members of staff from local unit to attend three learning events. These bespoke learning events will be held every 2-3 months during the period of implementation and will bring together teams from other Group 2 units to share their activity and learning on how they are implementing the PReCePT QI toolkit and working to address issues and challenges
Celebration event	None	Provision of an android tablet to be used by the local midwife champion to micro-coach colleagues, plus a small fund for purchasing study collateral (pens, magnets, lanyards, aide-mémoires), if required
Collateral funding	None	Funding for up to three members of staff from local unit to attend a celebration event which will bring together teams from all Group 2 units to wrap up the study and to share experiences, learning and success.

## 2. Study randomisation

Of the 80 eligible units, 48 consented to participate in the study. Of units eligible in wave one, 29 consented and eight were allocated to the intervention group and 16 to the control group. Five units were allocated as reserve, but these only represented two strata. Four control units withdrew due to change in unit readiness for NPP implementation and two of these units were replaced by reserve units. There were no reserve units available for the other two units that withdrew.

Of units eligible in wave two, 19 consented to participate in the study. There were, however, not enough consenting units to keep to the 2:1 control:intervention ratio for all strata. To keep the ratio for stratum 1, we randomised 1 unit to the intervention arm and 2 units to the control arm. Units in strata 2 and 3 were randomised to intervention and control arms using the 1:2 ratio as closely as possible, allocated independently for each stratum. We had 1 control and 1 intervention unit in strata 2 and 1 control and no intervention unit in strata 3. We oversampled for the last stratum, making use of all units available and had 4 intervention units and 8 control units. Six units were allocated to the intervention group and 13 to the control group. One intervention unit withdrew due to change in NPP implementation readiness.

**Table S1. Distribution of study units by Baseline MgSO<sub>4</sub>.**

Uptake	Enhanced support (intervention)	NPP standard support (control)	Units per strata
Stratum 1: 0-39%	3	5	8
Stratum 2: 40-49%	2	5	7
Stratum 3: 50-59%	2	5	7
Stratum 4: 60-≤70%	6	12	18
Total	13	27	40

### 3. Economic evaluation

**Table S2. Estimated lifetime costs and QALYs per patient associated with MgSO<sub>4</sub> treatment.**

Type of birth	Perspective	Method	Cost, £*	Δcost, £*	QALYs	ΔQALYs
Imminent	Societal	MgSO <sub>4</sub>	61,971	-23,690	26.6	0.3
		No MgSO <sub>4</sub>	85,661		26.3	
Threatened	Societal	MgSO <sub>4</sub>	44,068	-15,964	26.7	0.2
		No MgSO <sub>4</sub>	60,032		26.5	

<sup>†</sup>Based on Bickford et al (7)

<sup>\*</sup>Cost estimates were converted to Pounds Sterling and inflated to 2019 prices

**Table S3. Point estimates, probability distributions, and source of parameter estimates used in the probabilistic analysis.**

Parameter	Statistics	Estimate	Probability distribution	Source
Type of birth (Imminent)	n (%)	1017/2493 (39%)	Beta distribution	Trial data
Probability MgSO <sub>4</sub> treatment (yes) – Control arm				
MgSO <sub>4</sub> yes - Imminent	n (%)	591/703 (84%)	Beta distribution	Trial data
MgSO <sub>4</sub> yes - Threaten	n (%)	805/989 (81%)	Beta distribution	Trial data
Incremental effectiveness ESP vs NPP				
MgSO <sub>4</sub> yes - Imminent	OR (se)	0.99 (0.03)	LogNormal	Logistic regression
MgSO <sub>4</sub> yes - Threaten	OR (se)	0.99 (0.03)	LogNormal	Logistic regression
Incremental lifetime QALYs				
MgSO <sub>4</sub> yes - Imminent	Mean (se*)	0.3 (0.06)	Beta distribution	Bickford et al <sup>1</sup>
MgSO <sub>4</sub> yes - Threaten	Mean (se*)	0.2 (0.04)	Beta distribution	Bickford et al <sup>1</sup>
Incremental lifetime costs				
MgSO <sub>4</sub> yes - Imminent	Mean (se*)	£-23,690 (-4,738)	Gamma distribution	Bickford et al <sup>1</sup>
MgSO <sub>4</sub> yes - Threaten	Mean (se*)	£-15,964 (-3,193)	Gamma distribution	Bickford et al <sup>1</sup>
NPP Implementation costs				
MgSO <sub>4</sub> yes - Imminent	Mean (sd)	£94 (65)	Gamma distribution	Trial data
MgSO <sub>4</sub> yes - Threaten	Mean (sd)	£97 (67)	Gamma distribution	Trial data
MgSO <sub>4</sub> no - Imminent	Mean (sd)	£97 (65)	Gamma distribution	Trial data
MgSO <sub>4</sub> no - Threaten	Mean (sd)	£102 (74)	Gamma distribution	Trial data
ESP additional implementation costs <sup>#</sup>				
MgSO <sub>4</sub> yes - Imminent	Mean (sd)	£262 (267)	Gamma distribution	Trial data
MgSO <sub>4</sub> yes - Threaten	Mean (sd)	£285 (298)	Gamma distribution	Trial data
MgSO <sub>4</sub> no - Imminent	Mean (sd)	£233 (205)	Gamma distribution	Trial data
MgSO <sub>4</sub> no - Threaten	Mean (sd)	£318 (287)	Gamma distribution	Trial data

\*Standard Errors were assumed to be 20% of their point estimates

<sup>#</sup>The total cost of the ESP model (intervention arm) is the result of the sum of NPP and the ESP additional implementation costs

NPP National PReCePT Programme

ESP Enhanced Support Programme

**Table S4. Mean unit-level funded costs for the enhanced support programme and NPP.**

Category	Intervention (n=13)	Control (n=27)	difference
	ESP	NPP	
Central, £	780	780	0
AHSN, £	2,492	2,764	-272
Clinical time, £	10,000	2,500	7,500
QI coaches, £	3,254	0	3,254
Other <sup>†</sup> , £	6,387	0	6,387
Total	22,913	6,044	16,869

<sup>†</sup> Including project management, learning events, and miscellaneous

**Table S5. Mean lifetime QALYs and costs per baby by type of birth and trial arm.**

	ESP (Intervention)					NPP (Control)				
	Imminent		Threaten		Total	Imminent		Threaten		Total
	MgSO <sub>4</sub> Yes	MgSO <sub>4</sub> No	MgSO <sub>4</sub> Yes	MgSO <sub>4</sub> No		MgSO <sub>4</sub> Yes	MgSO <sub>4</sub> No	MgSO <sub>4</sub> Yes	MgSO <sub>4</sub> No	
Lifetime costs	61,971	85,661	44,068	60,032	54,554	61,971	85,661	44,068	60,032	54,416
Mean Implementation costs	350	315	381	425	372	94	97	97	102	97
QALYs	26.60	26.30	26.70	26.50	26.62	26.60	26.30	26.70	26.50	26.62

NPP National PReCePT Programme

ESP Enhanced Support Programme

**Table S6. Probabilistic Analysis results of the enhanced support programme cost-effectiveness.**

<b>ESP vs NPP</b>	<b>Deterministic analysis</b>
Incremental implementation costs per baby, £	276
Incremental lifetime costs, £	137
Incremental total costs, £	413
Incremental QALYS	-0.002
Net Monetary Benefit*, £	-447

\*used a willingness-to-pay threshold of £20,000 per QALY

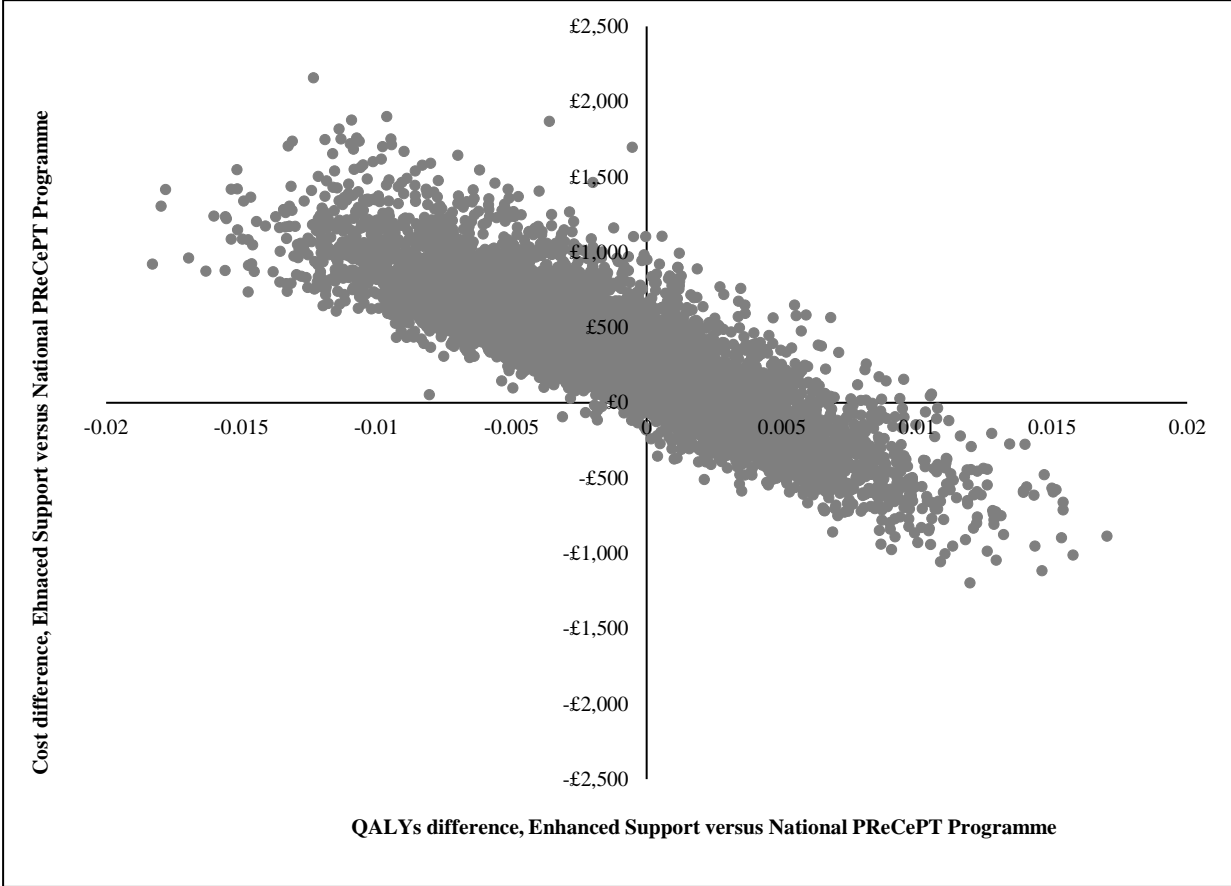
ESP Enhanced Support Programme

NPP National PreCePT Programme



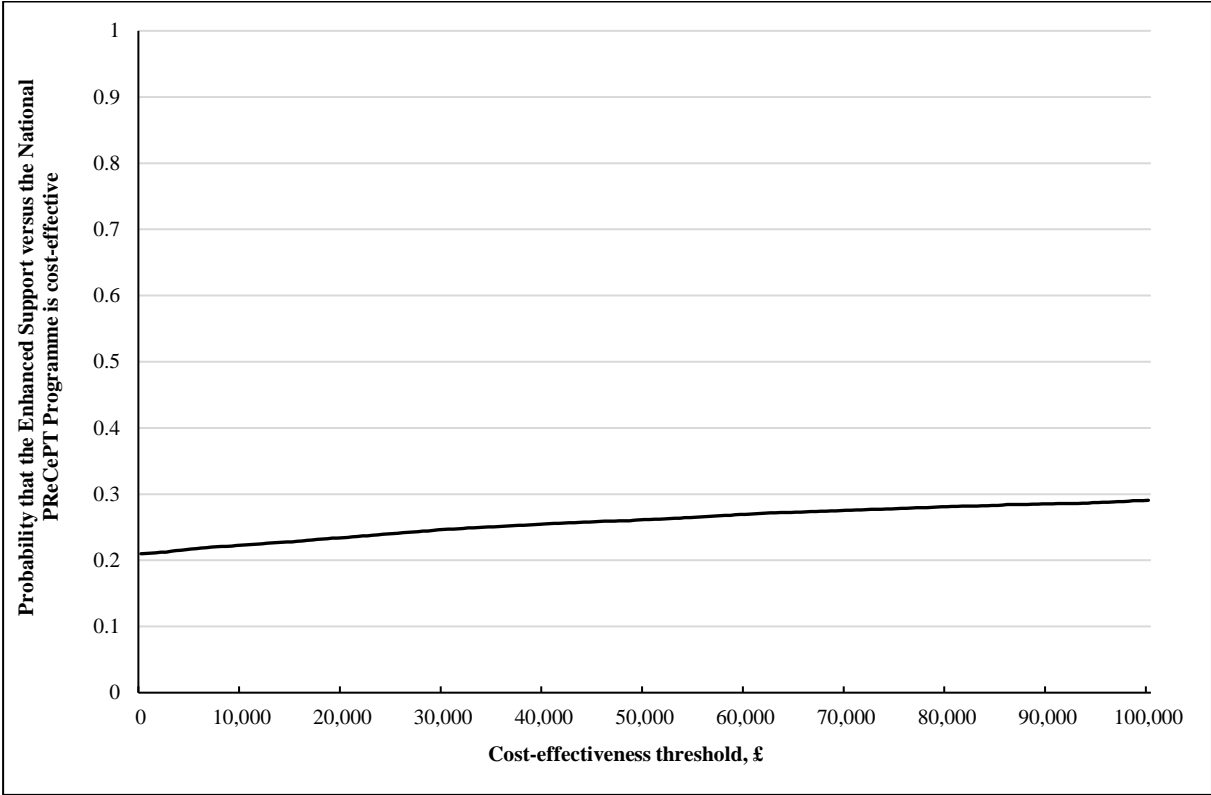
**Figure S1. Cost-effectiveness plane of PReCePT Enhanced Support versus National PreCePT Programme Support.**

The graph displays results of Monte Carlo simulations with 10 000 iterations using the value ranges and distributions presented in Table S3. The horizontal axis represents the difference in effect measures in Quality Adjusted Life Years (QALYs) between the enhanced support versus the standard support; and the vertical axis represents the difference in cost. Datapoints falling top left quadrant indicate that the enhanced support is less effective and more costly than the standard support. Datapoints falling the top right quadrant indicate that the enhanced support is more effective and more costly than the standard support. Datapoints falling bottom right quadrant indicate that the enhanced support is more effective and less costly than the standard support.



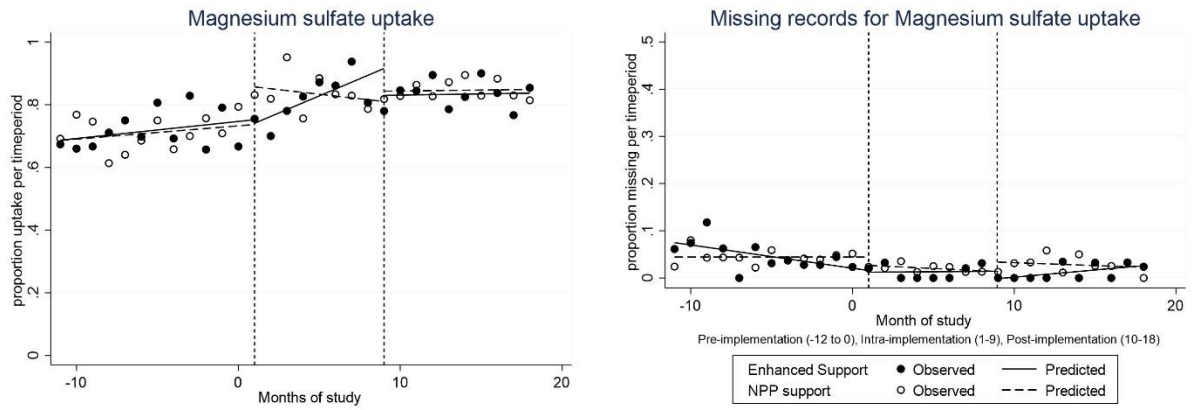
**Figure S2. Cost-effectiveness acceptability curve of PReCePT Enhanced Support versus National PReCePT Programme Support.**

The curve shows the probability of enhanced support being cost-effective at different cost-effectiveness threshold values.



## 4. MgSO4 over time

Figure S3: MgSO4 uptake and data completeness over time



## 5. Qualitative interviews topic guide

### PReCePT Study Staff Interview Topic Guide

Participant groups (unit lead midwife, unit lead neonatologist, unit lead obstetrician, doctor in training, staff midwife)

#### 1. *Background*

- Provide an overview of interview purpose, intended use for the interview data, measures to protect confidentiality and anonymity, permission to audio record interview and take notes,
- Any other questions before we start? (start recording)
- Receive verbal consent if this has not already been done

#### 2. *Introductions*

- Participants' job title, time in post, role and responsibilities in the unit
- Role in PReCePT Study

#### 3. *Opening*

- What has been your experience of PReCePT at your unit? Can you briefly talk me through the process you follow to administer MgSO<sub>4</sub>? In your view, how has it been going?

#### 4. *Specific questions about the PReCePT QI intervention*

(these will vary for each group of participants depending on their role in the study and whether the participant works in a unit which is 'enhanced support' (intervention arm) or 'standard support' (control arm))

- Overall, what are your views of the PReCePT QI Toolkit and implementation guide?
- Could I take you through the PReCePT QI Toolkit and ask you to comment on the usefulness of each?
  - Introduction to PReCePT Evidence (Essential resources)
  - Summary of Key Research (Essential resources)
  - Clinical Guidance for the Management of Suspected Preterm Labour (Essential resources)
  - PReCePT Magnesium Sulphate Quick Reference (Essential resources)
  - PReCePT Infographic (Essential resources)
  - Parent Information Leaflet (Essential resources)
  - Staff "PReCePT Training" Presentation (Essential resources)
  - Midwife Lead Role Description (Essential resources)
  - Regional Neonatal Lead Role Description (Essential resources)
  - Maternity Unit Obstetrician Lead Role Description (Essential resources)
  - Poster: Think Magnesium Sulphate Too (Strongly Recommended resources)
  - The PReCePT Dashboard and how to use it (Strongly Recommended resources)
  - PReCePT Management of Preterm Labour Proforma (Optional resources)
  - PReCePT Magnet Instructions (Optional resources)
  - QI Learning Log (Optional resources)
  - Other you've used in your unit e.g. pens, lanyards?
- Did you amend any of the materials to suit your local needs?
- Would you have preferred something different?
- Could I take you back to the launch event and the QI training you received?
  - How useful did you find it? For your role in PReCePT / your role overall e.g. applied in other areas of work?
  - What did you like about it/ didn't like about it? Would you like anything to be different?
- What coaching did you receive?
  - How frequently have you been in touch with the QI coaches? Via phone, emails, social media, face to face?
  - Was this contact instigated by the coaches or your unit? What were the reasons for (non)engagement?
  - How useful did you find it?
  - What did you like about it/didn't like about it? Would you like anything to be different?
  - Do you draw support from any outside resources? E.g. social media groups, twitter, other? Which ones?

#### 5. *Specific questions about the PReCePT QI implementation*

(these will vary for each group of participants depending on their role in the study and whether the participant works in a unit which is 'enhanced support' (intervention arm) or 'standard support' (control arm))

- In your view, to what extent did your unit adhere or not to the PReCePT QI training [when administering MgSO<sub>4</sub>]? What were the reasons? [Have you adapted it in any way to fit your setting?]
- Were there any factors that may have influenced the implementation and observed outcomes; such as organisational changes, staff shortages? Were there any professional, organisational or cultural issues that may have affected implementation? How has the collaboration between obstetrics and postnatal staff been?
- To what extent were staff engaged in PReCePT? Were there some staff more engaged than others? Were there opportunities for involvement? For making suggestions, comments and changes?
- Were patients involved in the implementation of PReCePT? Has a local PPI representative been involved? To what extent and in what way?
- To what extent did PReCePT as a model for quality improvement fit in or interfered with the daily practice? Has it become embedded in usual practice or has it been experienced as disruptive? Why?
- To what extent did the unit/hospital/trust leadership support PReCePT 2?

**6. Closing**

- Thank you for your feedback. Is there anything else you would like to tell me for the evaluation?
- Provide information about when the findings from the study will be made available, publications plans, current issues and developments.

## 6. A description of units participating in qualitative interviews

Unit Code	AHSN Code	Arm	2017 MgSO <sub>4</sub> uptake	2019/20 MgSO <sub>4</sub> uptake	Type of unit (No of eligible mothers in 2017)	CQC patient safety rating	CQC overall rating	Number of interviews conducted
12	<b>A</b>	Standard support	34.1%	70.83%	Non-tertiary unity (N=41)	Requires improvement	Good	1
5	<b>B</b>	Enhanced support	65.0%	100%	Non-tertiary (N=40)	Good	Good	2
15		Standard support	68.0%	78.8%	Tertiary (N=75)	Requires improvement	Good	3
16		Standard support	50.0%	89.0%	Non-tertiary (N=10)	Good	Good	1
1	<b>C</b>	Standard support	41.2%	100%	Non-tertiary (N=17)	Good	Good	2
9		Standard support	61.9%	82.2%	Non-tertiary (N=21)	Requires Improvement	Good	1
14		Standard support	40.0%	67.0%	Non-tertiary (N=15)	Good	Good	3
23	<b>D</b>	Enhanced support	27.3%	100%	Non-tertiary (N=11)	Requires improvement	Good	2
24		Standard support	39.7%	76.6%	Tertiary (N=58)	Requires improvement	Good	3
28		Standard support	57.1%	38.9%	Non-tertiary (N=14)	Good	Good	1
29		Enhanced support	67.0%	87.0%	Tertiary (N=81)	Good	Good	1
13	<b>E</b>	Standard support	67.5%	90.3%	Tertiary (N=80)	Good	Good	3
33		Standard support	60.0%	100%	Non-tertiary (N=20)	Good	Good	2
32	<b>F</b>	Enhanced support	70.0%	100%	Non-tertiary (N=10)	Good	Good	1
34		Standard support	64.3%	75.0%	Non-tertiary (N=14)	Good	Good	1
4	<b>G</b>	Enhanced support	41.2%	100%	Tertiary (N=53)	Good	Good	2
22		Standard support	62.2%	74.5%	Non-tertiary (N=45)	Good	Requires Improvement	1
6	<b>H</b>	Enhanced support	42.1%	76.5%	Tertiary (N=57)	Good	Outstanding	1
7		Enhanced support	60.0%	55.6%	Non-tertiary (N=15)	Good	Good	3
8	<b>K</b>	Enhanced support	55.6%	75.6%	Non-tertiary (N=18)	Requires improvement	Good	1
11		Standard support	38.5%	75.6%	Non-tertiary (N=13)	Good	Good	2
17		Standard support	47.5%	85.2%	Non-tertiary (N=40)	Good	Good	2
19		Standard support	44.4%	79.4%	Non-tertiary (N=27)	Requires improvement	Good	1
20		Standard support	7.1%	83.3%	Non-tertiary (N=14)	Good	Good	2

36	<b>L</b>	Standard support	65.0%	100%	Non-tertiary (N=20)	Requires improvement	Good	2
37		Standard support	70.9%	91.3%	Tertiary (N=55)	Requires improvement	Good	1
31	<b>M</b>	Enhanced support	68.9%	85.7%	Tertiary (N=74)	Good	Outstanding	3
38		Standard support	61.5%	60.0%	Non-tertiary (N=13)	Good	Good	1
40		Standard support	68.4%	87.0%	Non-tertiary (N=19)	Requires improvement	Good	2

1. Bickford CD, Magee LA, Mitton C, et al. Magnesium sulphate for fetal neuroprotection: a cost-effectiveness analysis. *BMC Health Services Research* 2013; **13**(1): 527.