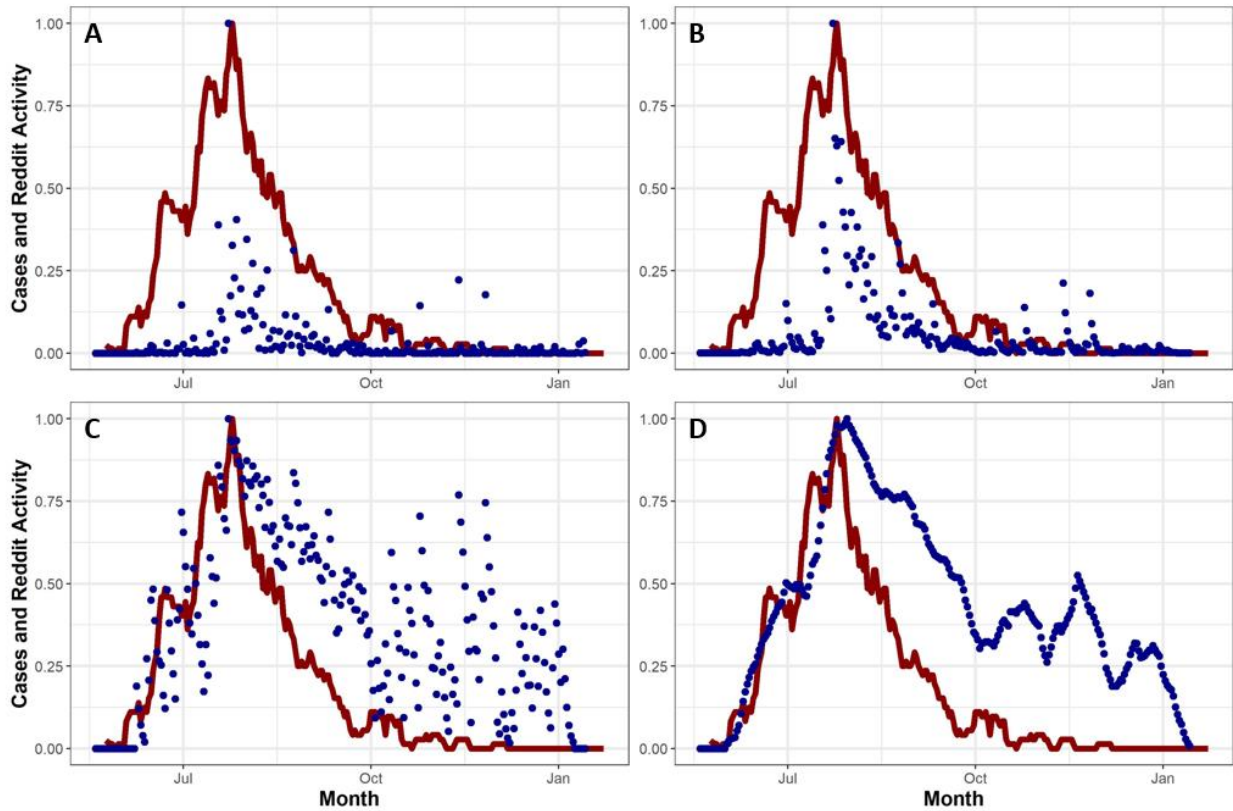


1 **Appendix for “Modelling the impact of vaccination and sexual behavior change on**
2 **reported cases of mpox in Washington D.C.**

3 Parameterizing Behavior Change

4 We chose to analyze activity in individual subreddits (individual conversation boards on
5 reddit, a social media discussion based website) as a proxy for risk awareness following prior
6 work on HIV awareness²⁶. We first searched for LGBTQ+ focused subreddits that (a) had more
7 than 10,000 members, and (b) contained at least 5 posts or comment threads containing
8 “monkeypox”, “mpox”, or “mpx”. We identified 7 sites: r/askgaybros, r/askgaybrosover30,
9 r/askgaymen, r/gay, r/gaybros, r/lgbt, r/lgbtnews. For each of these subreddits, we collected posts
10 by date, and the number of comments on each post, filtering out early posts concerning first
11 reports of mpox in non-U.S. countries (Fig. S1A). A day that includes many posts with many
12 comments indicates a high level of interest in mpox among the observed LGBTQ+ community.
13 However, not all comments on a post occur on the day that the post is made, particularly since
14 posts receiving many comments will stay on the “front page” of a subreddit for several days,
15 meaning that they will be among the first post that site visitors see. Thus, to represent the interest
16 over time that a single post can represent, we fit an exponential decay curve to the number of
17 comments received each day by the most commented post containing “monkeypox” posted on
18 these subreddits. We then spread the number of comments made on each post over days
19 according to this exponential decay (Fig. S1B). Because posts that attract comments are shown to
20 more users, the number of comments a post receives may be a exponential function of interest in
21 a topic. Thus, we take a log transform of comments per day (Fig. S1C). Finally, we take a 2 week
22 running average of $\log(\text{comments})$ to generate risk perception among MSM over time (Fig.
23 S1D). The maximum relative reduction in probability of one-time partnerships per day in our

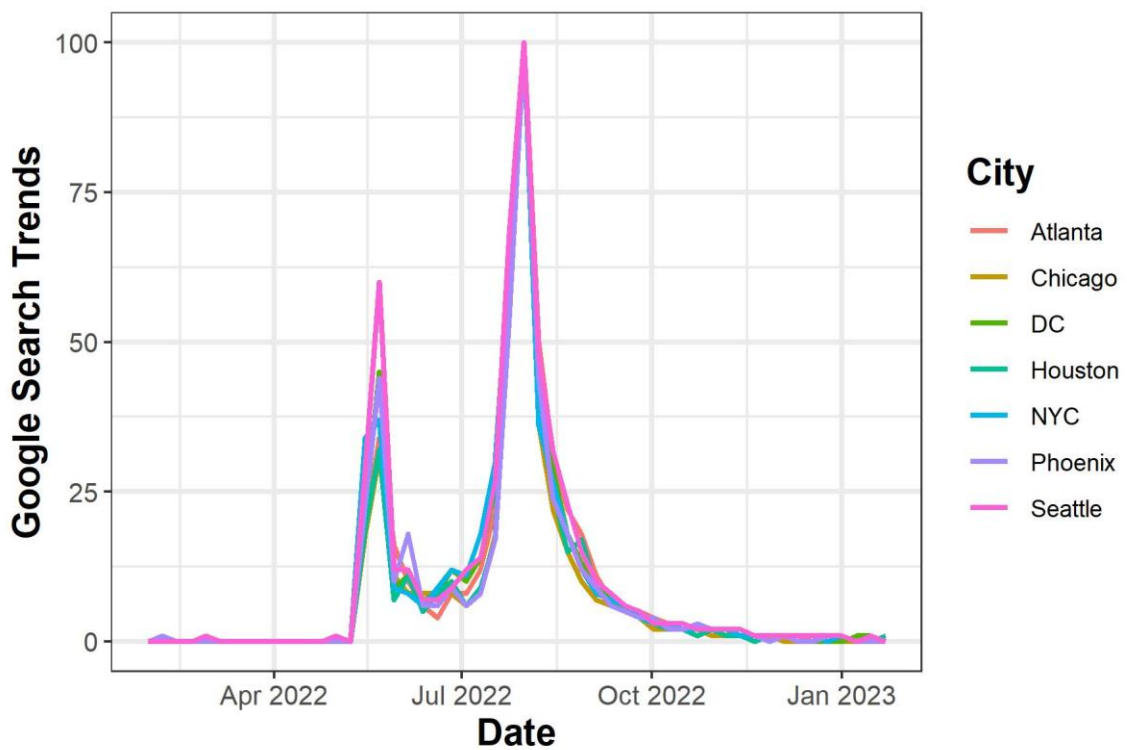
24 model (40%) occurs on the day of maximum reddit activity (July 30th). This relative decrease is
25 then scaled over time with reddit activity, e.g. we model a 20% reduction in one-time partnership
26 probability on July 11th and September 24th, when reddit activity was half of the maximum value.



27
28 **Figure S1:** Here, we transform reddit data into our model's relative risk perception metric. For the red
29 line in all panels, the Y-axis represents 1 week running average of case reports from Washington D.C., set
30 relative to 1, over months on the X-axis. For blue dots, Y-axis represents (A) number of posts + number
31 of comments in examined subreddits containing mpox related terms, relative to 1, (B) Number of posts
32 and comments, taking into account the exponential decay of comments over time, (C) the log transform of
33 panel B, (D) the running 2 week average of panel C.

34 These the subreddits are not specific to D.C., and thus we needed to quantify regional
35 variation in online mpox interest to ascertain whether subreddit searches needed to be corrected

36 for regional interest. Thus, we examined the proportion of Google searches containing
37 “monkeypox”, “mpox”, or “mpx” from cities which experienced early mpox outbreaks (D.C.,
38 New York, and Chicago) compared to cities that experienced later outbreaks or that did not
39 experience a substantial outbreak (Atlanta, Houston, Phoenix, Seattle). We find that Google
40 searches for these terms generally do not vary by location within the U.S. (Fig. S2), indicating
41 that the timing of the general population’s risk perception of mpox did not depend on local
42 trends. Further, we find that Google search interest peaks at a similar point to reddit activity.
43 Thus we conclude that mpox risk perception is synchronous nationally, meaning that national
44 trends can be used as a proxy for local risk perception.



45
46 **Figure S2:** Google search trends for “monkeypox” do not vary by location. The Y-axis represents the
47 proportion of all Google searches from a location which contained the term “monkeypox”, relative to 1,
48 over time on the X-axis. Colors indicate search location. The early peak corresponds to early news reports

49 on international mpox cases and initial cases reported in the United States. The main peak corresponds
50 with the declaration of mpox as a public health emergency.

51 Fitting procedure

52 We drew most model parameters from published literature (Table S1). However, we fit
53 five unknown parameters to Washington D.C. case data: the probability of transmission per
54 contact (μ), the length in days of the pre-symptomatic infectious period (l), the number of
55 individuals infected with mpox virus at the Capital Pride Parade/Festival, occurring on June 11-
56 12 (ϵ), the maximum percent reduction in probability of one-time sexual contact per day in
57 response to the mpox outbreak (ω), and the proportion of administered vaccine doses reported by
58 Washington D.C. that went to the modeled population rather than non-msm or non-resident
59 commuters. When fitting to D.C. case data, we removed all case reports occurring in cisgendered
60 women (defined as case reports where both sex at birth and gender identity were reported as
61 female).

62 To increase the efficiency of our fitting procedure, we fit parameters over two different
63 time periods. We first ran the model from May 21 – Jul 10. This period encompasses the Capital
64 Pride Parade/Festival and the period during which individuals who contracted mpox at pride
65 would develop symptoms and report for testing. However, this period occurs before large
66 numbers of individuals were vaccinated or a large proportion of the population were aware of the
67 risk of mpox (by our reddit post metric). Thus, we set behavior change and vaccination to zero,
68 and fit all other parameters to this 50 day period. We conducted a grid search, running the model
69 across a range of values for these three parameters ($\mu=[0.6,0.90]$, $l=[1,4]$, $\epsilon=[0,60]$). We then
70 selected the combination of parameters that minimized the negative log likelihood (nll) of
71 median cumulative cases over time in the model generating observed cumulative cases over time

72 reported in Washington D.C. (using a Poisson distribution). When fitting, we ran each parameter
73 combination for 60 simulations. We performed this procedure to a parameter interval of 0.1 for
74 μ , 10 for ε , and 1 for l . We found that over this time period the best fit parameter set included an
75 80% probability of transmission per sex act, a 4 day latent period, and 40 individuals infected at
76 D.C. pride.

77 We thus set $\varepsilon = 40$, $\mu = 0.8$ and $l = 4$ and then ran our model from May 21 – December
78 10. This time period includes the decline of daily case reports, and so should inform intervention
79 parameters. Thus, we again conducted a grid search, running the model across a range of values
80 for maximum behavior change and proportion of reported vaccines administered to the modeled
81 population ($\omega=[0.3,0.7]$, $\theta=[0.5,1.0]$). We performed this procedure to a parameter interval of
82 0.1 for μ and θ . We found that the best fitting parameter set slightly underestimated case reports
83 in the early stages of the outbreak, and slightly overestimated case reports in the later stages of
84 the outbreak. Thus, we varied μ and ω over smaller intervals, before maximizing likelihood at
85 $\varepsilon = 40$, $\mu = 0.875$, $l = 4$, $\omega = 0.4$ and $\theta = 1.0$.

86 To test the likelihood of the outbreak ending entirely due to infection-driven herd
87 immunity, we repeated the above fitting process while holding behavior change and vaccine
88 administration at 0 ($\omega = 0$ and $\theta = 0$).

89

90 Table S1: model parameters

Parameter Description	Value	Source
Initial Conditions		
Population size	37,400	Grey et al. 2016
Initial number infectious individuals	5	Model Assumption
Date seeded with initial infections	May 21 th	Case report data
Number individuals infected at D.C. pride	40	Fit to case report data
Sexual Network Parameters		
Proportion individuals with 0 main and 0 casual partners	0.471	Jenness et al. 2017
Proportion individuals with 0 main and 1 casual partners	0.167	Jenness et al. 2017
Proportion individuals with 0 main and 2 casual partners	0.074	Jenness et al. 2017
Proportion individuals with 1 main and 0 casual partners	0.220	Jenness et al. 2017
Proportion individuals with 1 main and 1 casual partners	0.047	Jenness et al. 2017
Proportion individuals with 1 main and 2 casual partners	0.021	Jenness et al. 2017
Mean duration of Main partnerships	407 days	Jenness et al. 2017
Mean duration of Casual partnerships	166 days	Jenness et al. 2017
Probability per day of individual with 0 casual and 0 main partners having a one-time sexual contact	0.0093	Jenness et al. 2017, Weiss et al. 2020
Probability per day of individual with 1 casual and 0 main partners having a one-time sexual contact	0.012	Jenness et al. 2017, Weiss et al. 2020
Probability per day of individual with 2 casual and 0 main partners having a one-time sexual contact	0.012	Jenness et al. 2017, Weiss et al. 2020
Probability per day of individual with 0 casual and 1 main partners having a one-time sexual contact	0.0080	Jenness et al. 2017, Weiss et al. 2020
Probability per day of individual with 1 casual and 1	0.0079	Jenness et al. 2017, Weiss et al. 2020

Modelling mpox vaccination and behavior

main partners having a one-time sexual contact		
Probability per day of individual with 2 casual and 1 main partners having a one-time sexual contact	0.0079	Jenness et al. 2017, Weiss et al. 2020
Probability per day of individual in activity group 1 having a one-time sexual contact	0	Jenness et al. 2017
Probability per day of individual in activity group 2 having a one-time sexual contact	0.001	Jenness et al. 2017
Probability per day of individual in activity group 3 having a one-time sexual contact	0.0054	Jenness et al. 2017
Probability per day of individual in activity group 4 having a one-time sexual contact	0.01	Jenness et al. 2017
Probability per day of individual in activity group 5 having a one-time sexual contact	0.032	Jenness et al. 2017
Probability per day of individual in activity group 6 having a one-time sexual contact	0.29	Weiss et al. 2020
Proportion of the population in activity groups 1-5 each	0.19	Jenness et al. 2017, Weiss et al. 2020
Proportion of the population in activity group 6	0.05	Jenness et al. 2017, Weiss et al. 2020
Mean square root of age difference between Main partners	0.464	Jenness et al. 2017
Mean square root of age difference between Casual partners	0.586	Jenness et al. 2017
Mean square root of age difference between one-time partners	0.544	Jenness et al. 2017
Proportion of population who are exclusively insertive	0.242	Jenness et al. 2017

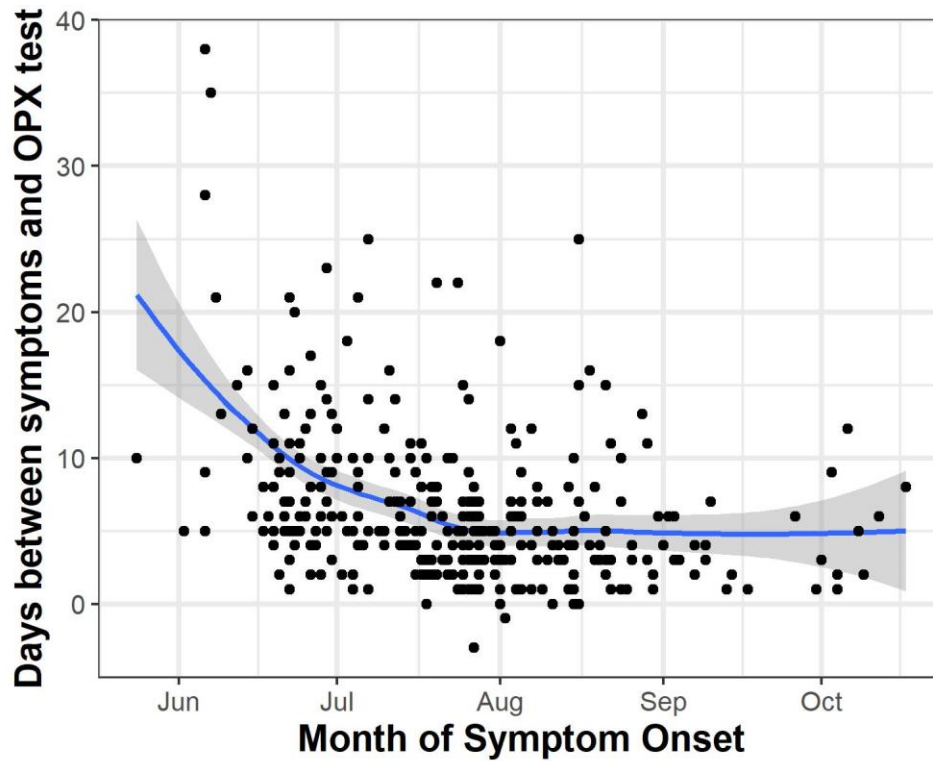
Proportion of population who are exclusively receptive	0.321	Jenness et al. 2017
Proportion of population who are versatile	0.437	Jenness et al. 2017
Probability of having sexual contact per timestep with Main partner	0.22	Jenness et al. 2017
Probability of having sexual contact per timestep with Casual partner	0.14	Jenness et al. 2017
Probability of having sexual contact per timestep with one-time partner	1	Jenness et al. 2017
Natural History Parameters		
Probability of transmission per sexual contact	0.875	Fit to case report data
Mean duration of post-exposure, pre-symptomatic period	7.6 days	Charniga et al. 2022
Mean duration of pre-symptomatic infectious period	4 days	Fit to case report data
Mean duration of infectious period	27 days	Spicknall et al. 2022
Treatment Seeking and Vaccine Parameters		
Probability of seeking treatment	0.8	Farley et al. 2003
Duration of infectious period if seeking treatment (time until medical attention post-symptoms)	15 days on day 1, linearly decreases to 5.0 days on day 42, stays at 5.0 days for rest of simulation.	Figure S3
Vaccine efficacy before second dose	37%	Payne et al. 2022
Vaccine efficacy after second dose	69%	Payne et al. 2022
Minimum Time between first and second dose	28 days	
Behavior Change Parameters		
Maximum percent reduction in daily probability of forming one-time sexual partnerships.	40%	Fit to case report data

92 Table S2: Vaccination first-dose administration data for Washington D.C. Doses in first four
 93 rows contain only doses used for post-exposure prophylaxis and so were not included in our
 94 model.

Start Date	End Date	First Doses Given	Second Doses Given
May 29, 2022	June 4, 2022	1	0
June 5, 2022	June 11, 2022	23	0
June 12, 2022	June 18, 2022	18	0
June 19, 2022	June 25, 2022	16	0
June 26, 2022	July 2, 2022	319	0
July 3, 2022	July 9, 2022	627	15
July 10, 2022	July 16, 2022	938	13
July 17, 2022	July 23, 2022	3179	32
July 24, 2022	July 30, 2022	3433	64
July 31, 2022	August 6, 2022	4481	78
August 7, 2022	August 13, 2022	2723	279
August 14, 2022	August 20, 2022	1303	377
August 21, 2022	August 27, 2022	1739	2791
August 28, 2022	September 3, 2022	1060	3674
September 4, 2022	September 10, 2022	994	2485
September 11, 2022	September 17, 2022	924	2050
September 18, 2022	September 24, 2022	486	2049
September 25, 2022	October 1, 2022	165	325
October 2, 2022	October 8, 2022	129	388
October 9, 2022	October 15, 2022	101	335
October 16, 2022	October 22, 2022	83	235
October 23, 2022	October 29, 2022	82	155
October 30, 2022	November 5, 2022	69	139
November 6, 2022	November 12, 2022	51	87
November 13, 2022	November 19, 2022	39	77
November 20, 2022	November 26, 2022	22	44
November 27, 2022	December 3, 2022	30	70
December 4, 2022	December 10, 2022	29	61

95

96



97

98 **Figure S3:** Time between symptom onset and being tested for orthopoxvirus (OPX) decreased

99 over the course of the outbreak. Y-axis shows the delay between symptom onset and testing for

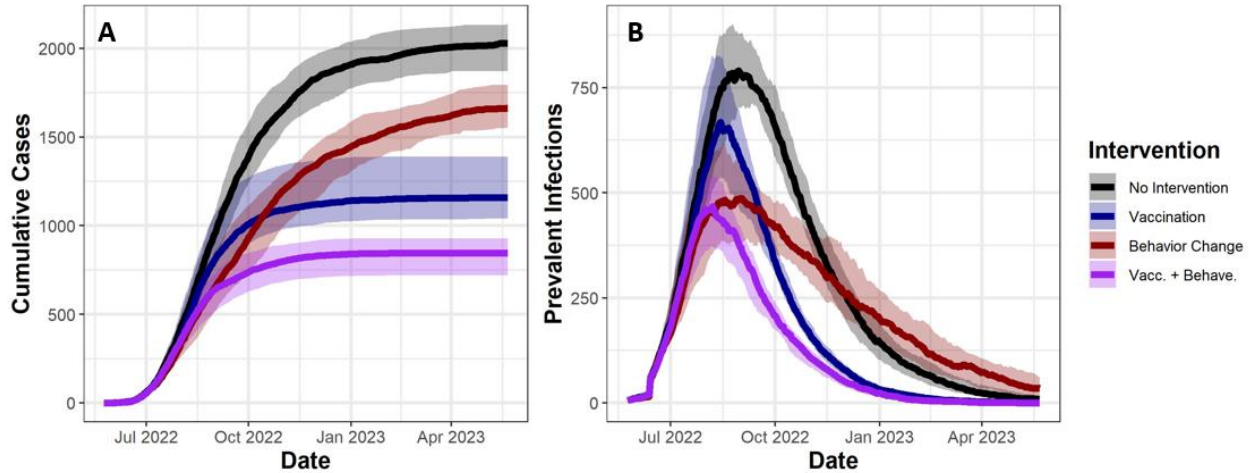
100 orthopoxvirus, over month of illness onset on the X-axis from May 24th, 2022 to Oct. 17th, 2022.

101 Points represent individual case reports, while the blue line and transparent band represent mean

102 and 95% confidence interval of the smoothed function of the mean. All case reports are from

103 Washington D.C.

104

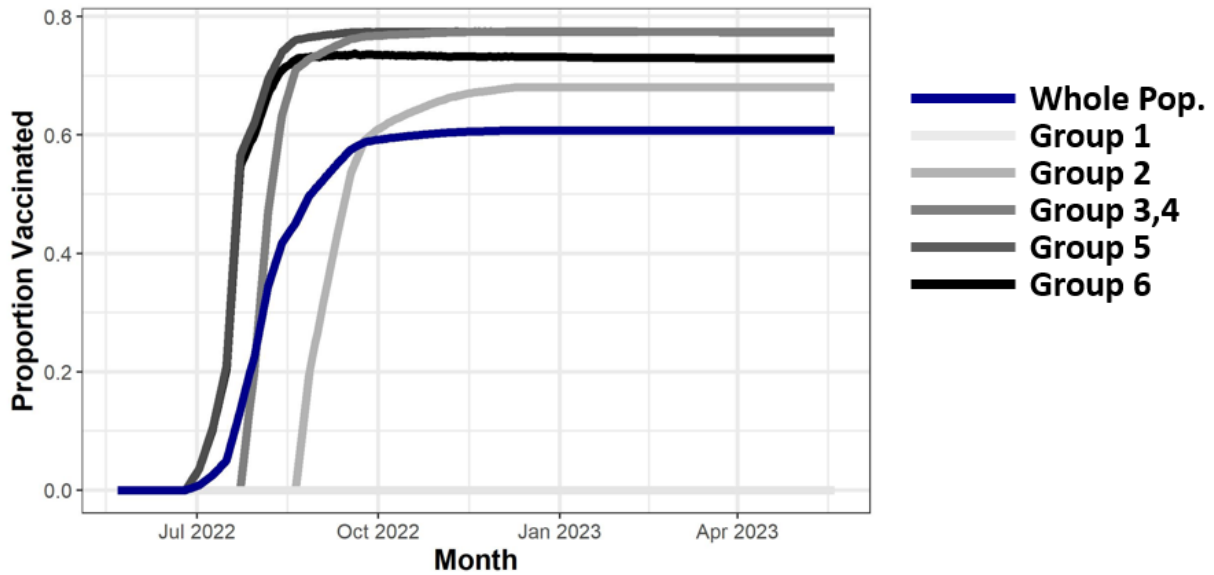


105

106 **Figure S4:** Here, we shrink the effective population size in our model from 37,400 to 20,000 as
 107 we assume that a proportion of MSM are not involved in the relevant sexual mixing pool. This
 108 means that vaccinations can reach a larger portion of the population, and that infection-driven
 109 herd immunity will be achieved faster. We find that the our core finding are unchanged: behavior
 110 change averts cases before vaccination, but vaccination averts more cases overall. (A) Y-axis
 111 shows model estimates of cumulative cases (i.e. individuals who are diagnosed with mpox), over
 112 time on the X-axis from May 21st 2022 to May 21st 2023. (B) Y-axis shows prevalent infections,
 113 over time on the X-axis. Solid lines indicate median values from 120 simulations, while
 114 transparent bands represent interquartile ranges. Colors indicate intervention combinations.

115

116



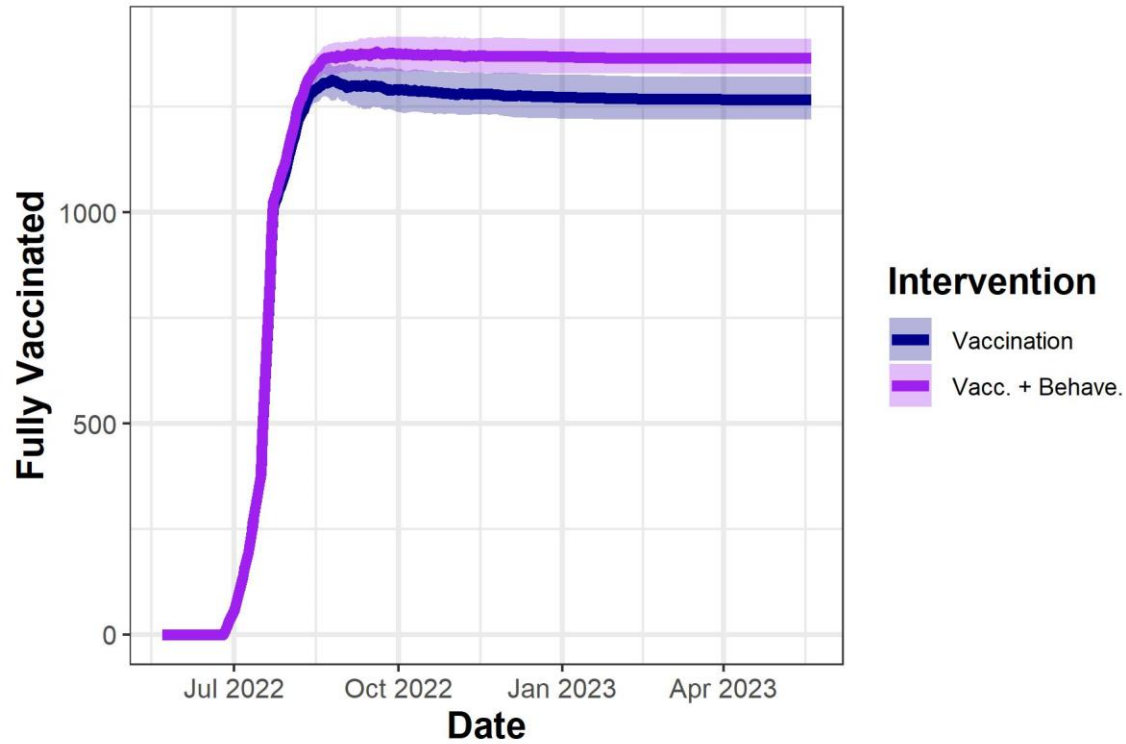
117

118 **Figure S5:** Proportion of sexual activity groups vaccinated over time. Y-axis shows proportion
119 of the whole population or individual activity groups (group 1 = lowest activity, group 6 =
120 highest activity) that are vaccinated with either 1 or 2 doses, over time on the X-axis. Groups 3
121 and 4 share 1 line because their trends overlap.

122

123

124



125

126 **Figure S6:** Y-axis shows the number of individuals in the most sexually active group who are

127 fully vaccinated, over date on the X-axis. Solid lines indicate median values from 120

128 simulations, while transparent bands outlined by thin lines represent interquartile ranges.

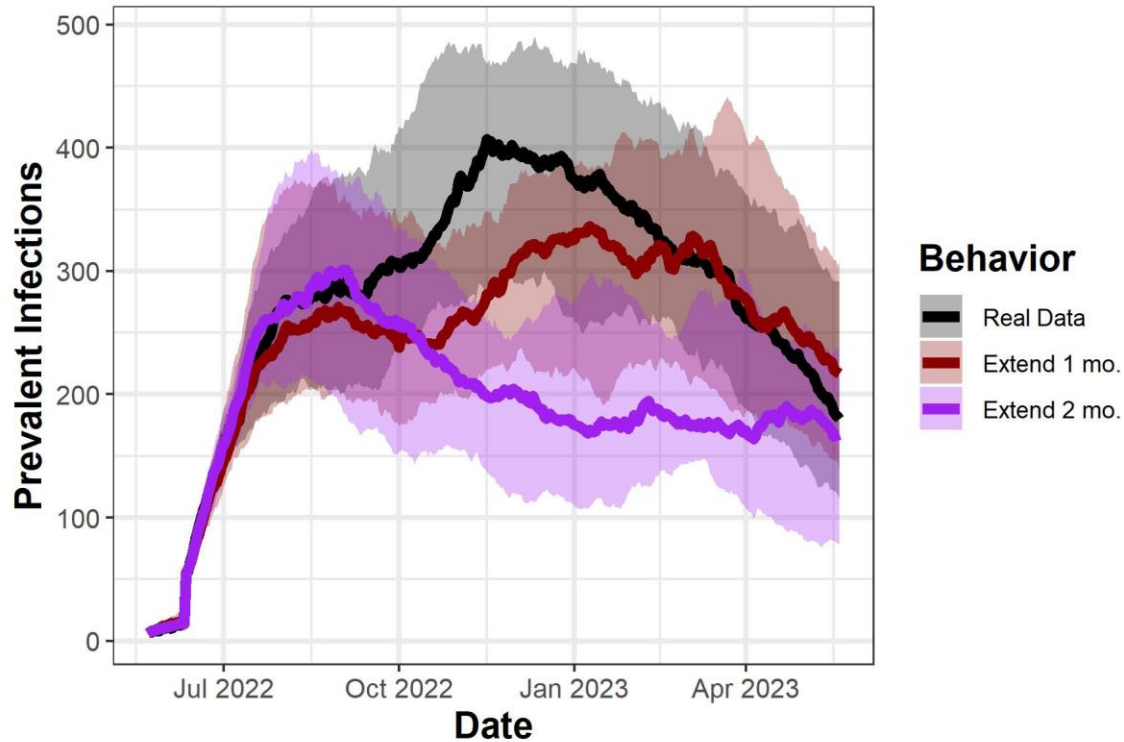
129 Decreases in number of individuals who are fully vaccinated occurring from August 2022

130 onwards represent individuals who experience break-through infections, and thus are no longer

131 counted in the vaccinated class.

132

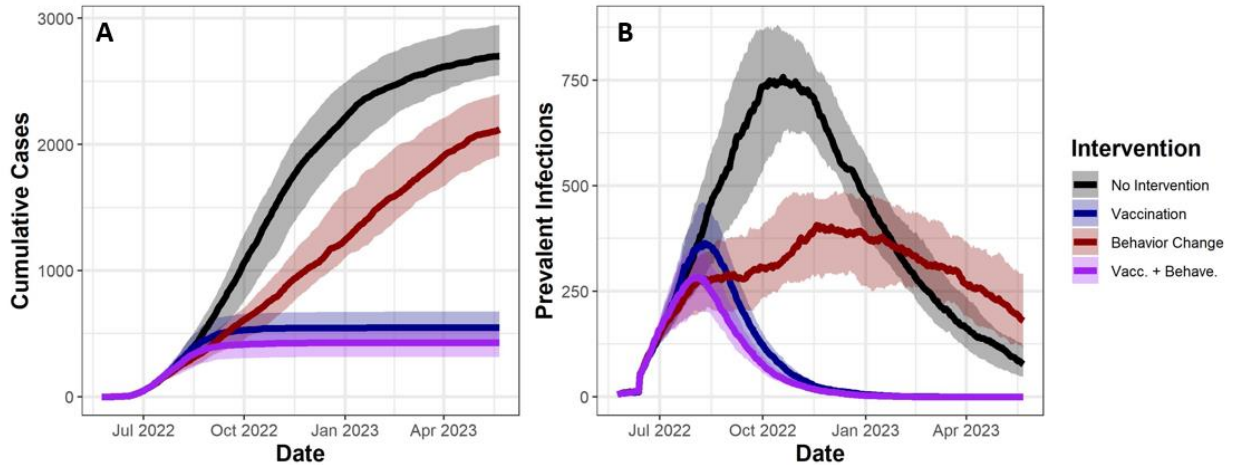
133



134

135 **Figure S7:** Behavior change alone would not have been able to end the outbreak within a year,
 136 even when we extend the time period of maximum reduction of one-time partnership
 137 probabilities. Y-axis shows prevalent infections, over time on the X-axis. Solid lines indicate
 138 median values from 120 simulations, while transparent bands represent interquartile ranges.
 139 Colors indicate the length of time over which individuals maintain a 40% reduction in one-time
 140 partnership probabilities. Black indicates data based on reddit activity, for red we extend
 141 maximum partnership reduction by one month, and for purple we extend maximum partnership
 142 reduction by two months.

143



144

145 **Figure S7:** Here, we assume a vaccine efficacy of 85% after first dose and 95% after second
146 dose based on ¹⁷, rather than 37% and 69% vaccine effectiveness, respectively, used in the main
147 text ¹⁶. We find that the our core finding are unchanged: behavior change averts cases before
148 vaccination, but vaccination averts more cases overall. (A) Y-axis shows model estimates of
149 cumulative cases (i.e. individuals who are diagnosed with mpox), over time on the X-axis from
150 May 21st 2022 to May 21st 2023. (B) Y-axis shows prevalent infections, over time on the X-axis.
151 Solid lines indicate median values from 120 simulations, while transparent bands represent
152 interquartile ranges. Colors indicate intervention combinations.

153