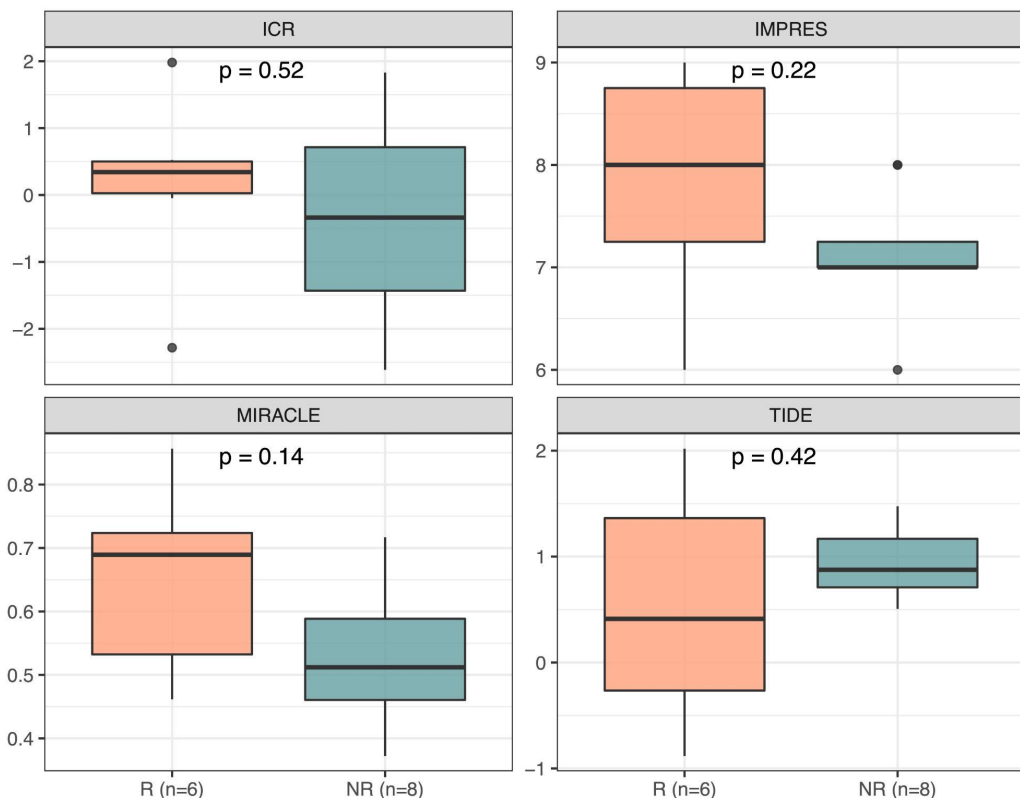
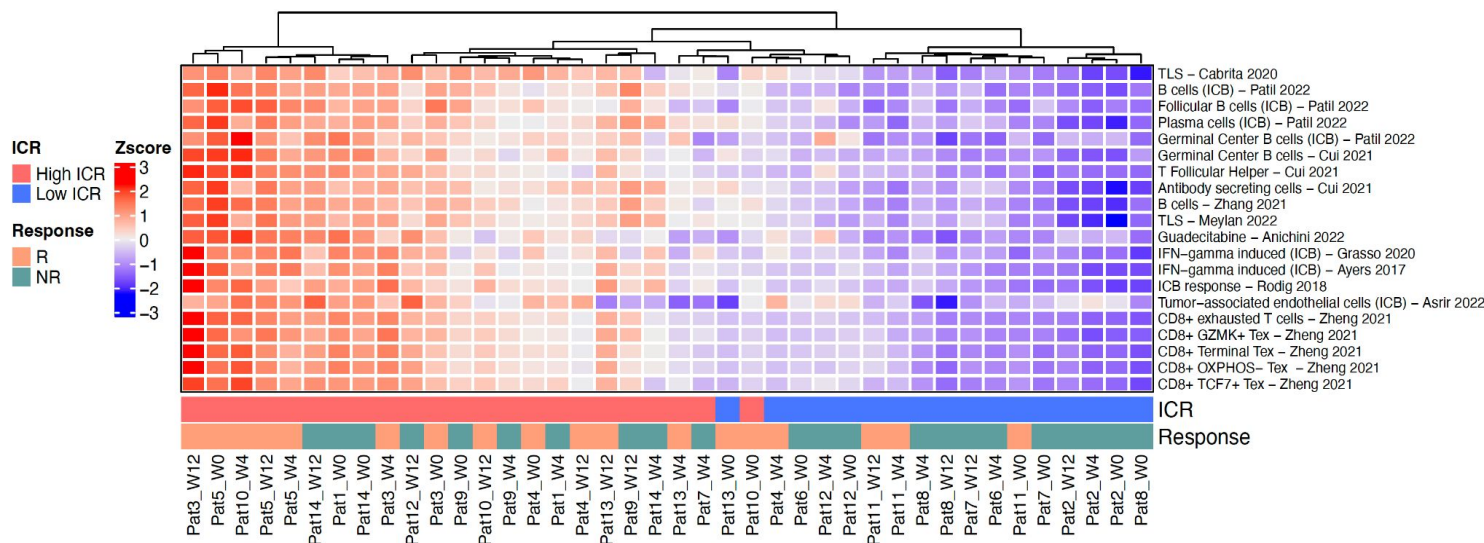


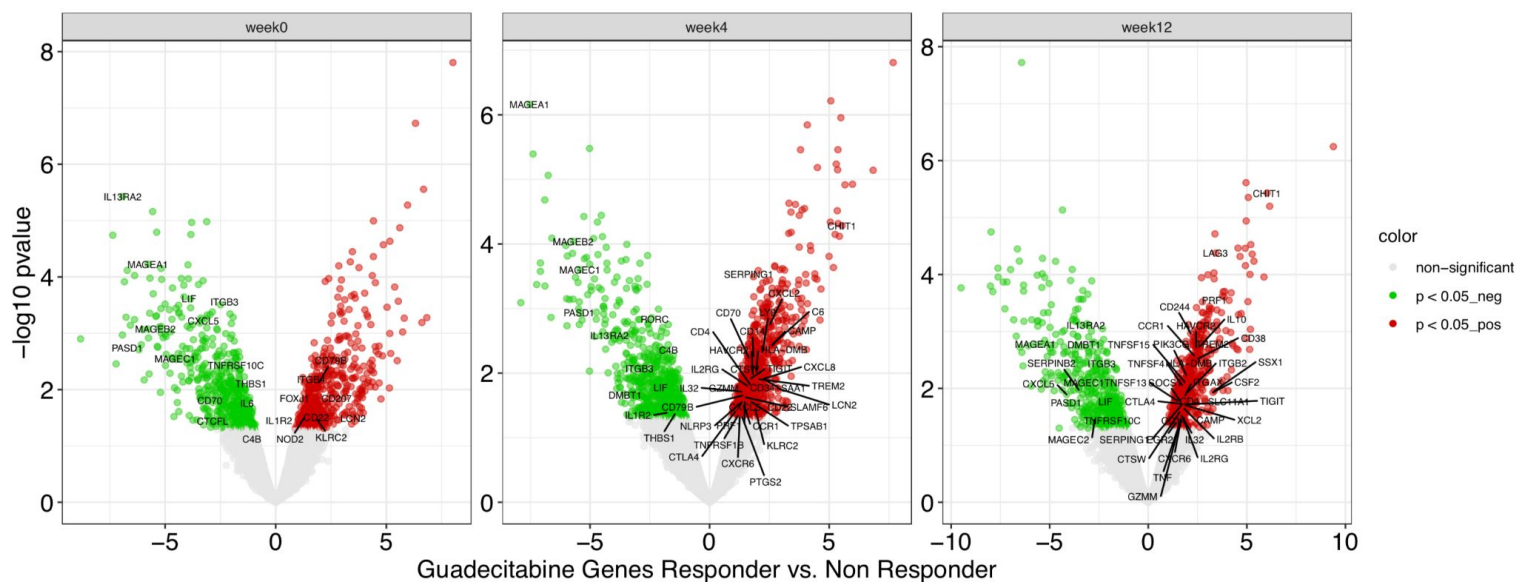
A

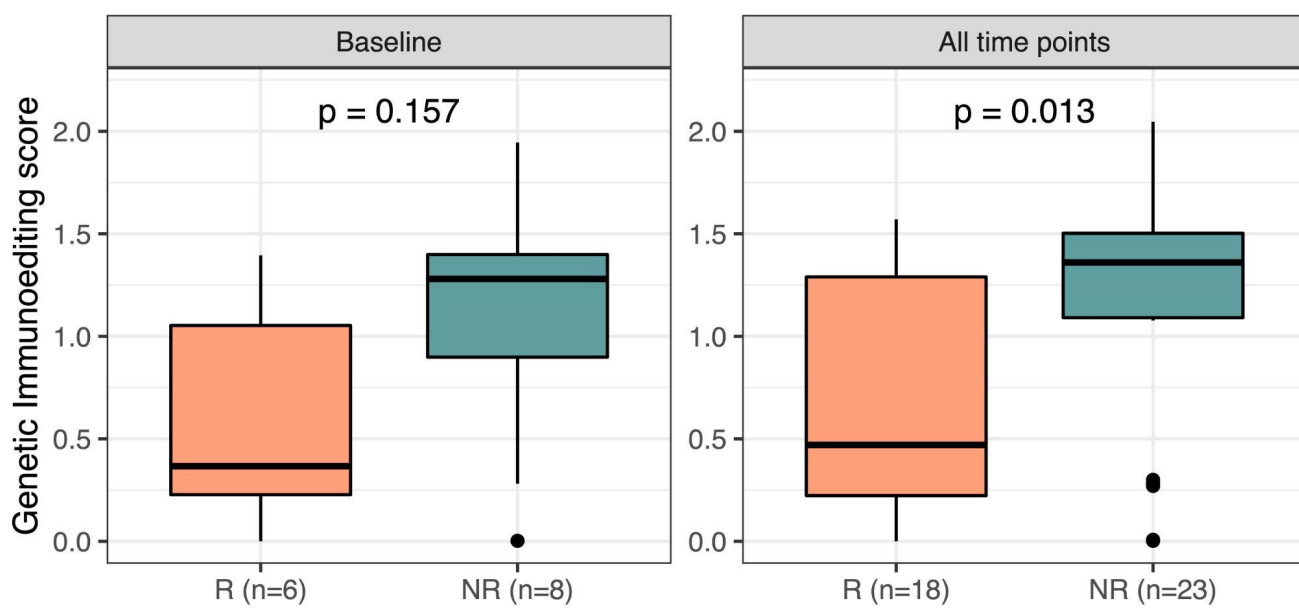
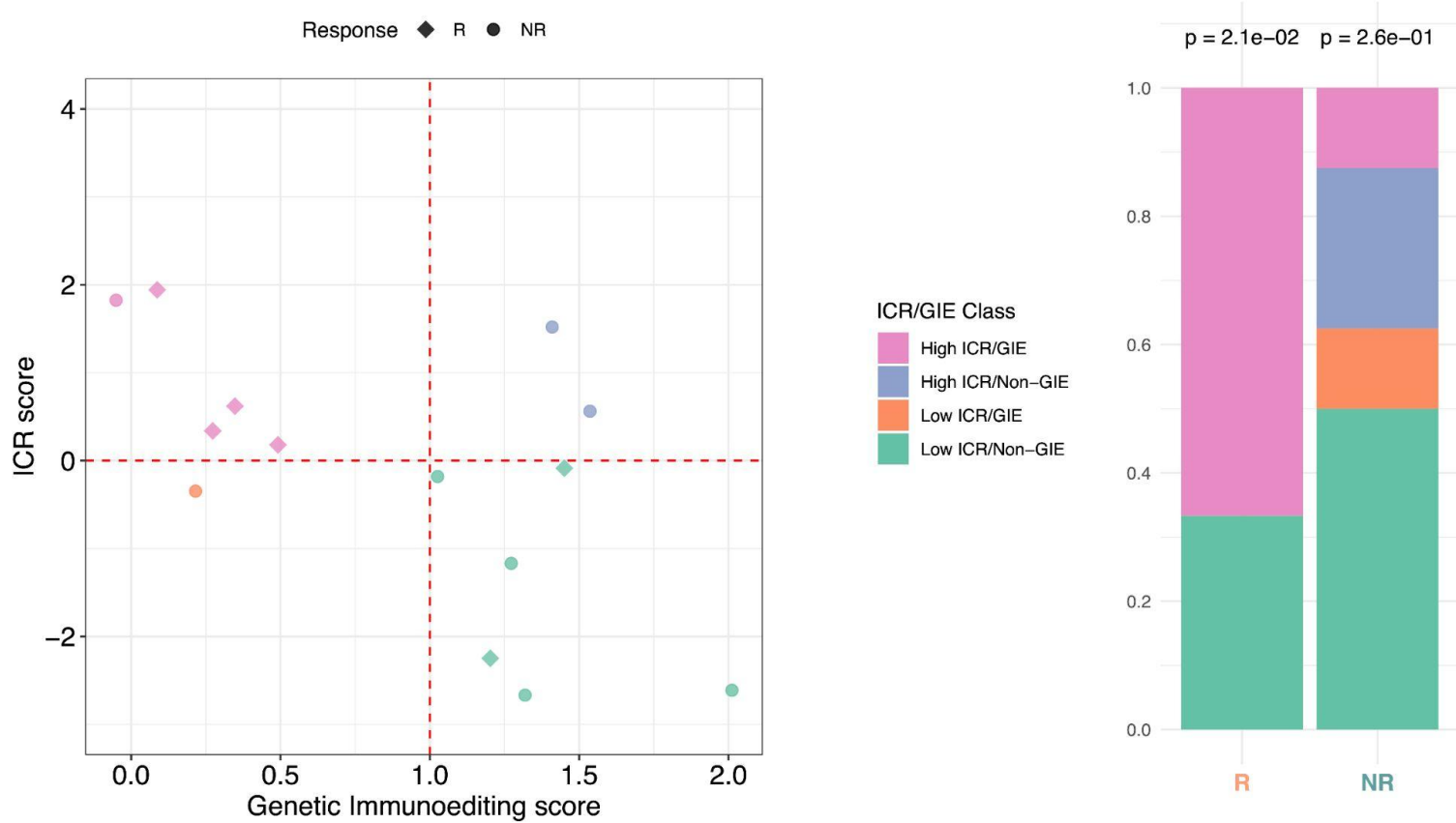


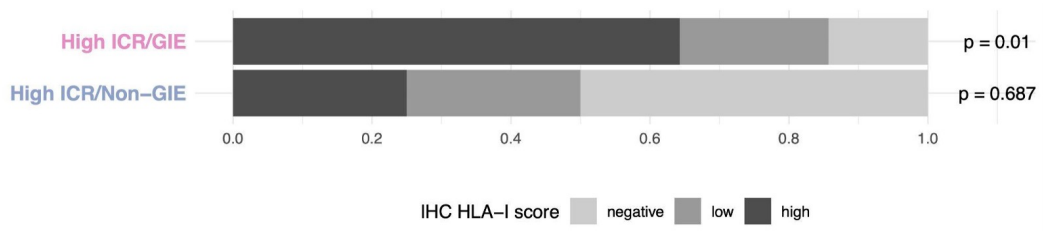
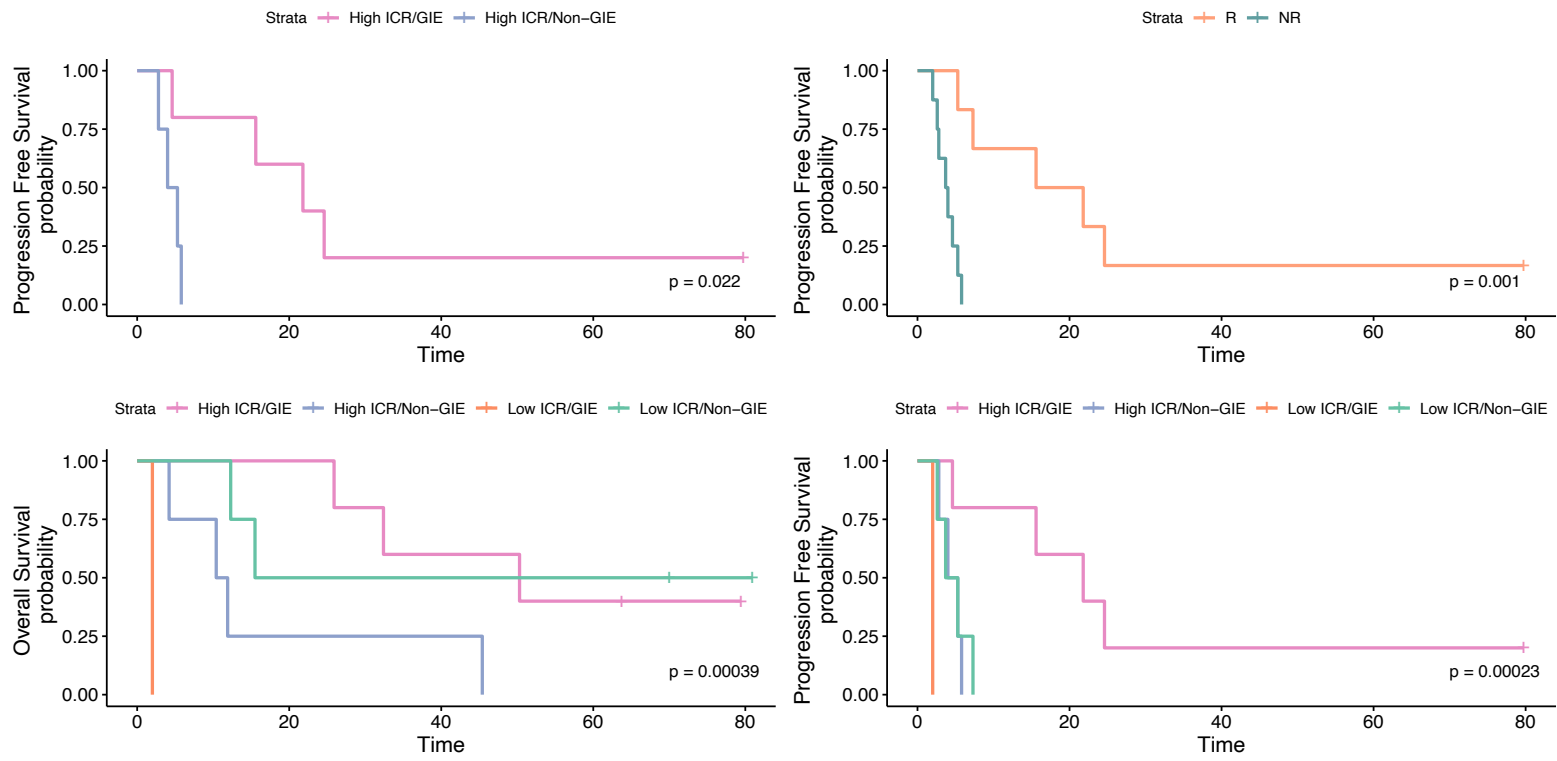
B



C



A**B**

A**B**

A

Patient_ID	Timing of biopsy	Clinical response	ICR	GIE	CD8 ⁺ density, tumor core (cells/mm ²)	Tumor HLA Class I Grade (0-3)	Agreement of clinical response with ICR/GIE/CD8/HLA profile	Possible interpretation
3	Week 0	R	HIGH ICR	GIE	1460	3	YES	Response associated with High ICR/GIE classification, high level of CD8 ⁺ infiltrate and retained tumor HLA class I expression
3	Week 4	R	HIGH ICR	GIE	639	3		
3	Week 12	R	HIGH ICR	GIE	1257	3		
4	Week 0	R	HIGH ICR	GIE	487	3	YES	Response associated with High ICR/GIE classification, high level of CD8 ⁺ infiltrate and retained tumor HLA class I expression
4	Week 4	R	LOW ICR	NON-GIE	106	3		
4	Week 12	R	HIGH ICR	GIE	912	3		
5	Week 0	R	HIGH ICR	GIE	1476	0	YES	Response associated with High ICR/GIE classification, high level of CD8 ⁺ infiltrate, in spite of defective HLA class I expression
5	Week 4	R	HIGH ICR	GIE	1139	2		
5	Week 12	R	HIGH ICR	GIE	1015	1		
10	Week 0	R	HIGH ICR	GIE	263	3	YES	Response associated with High ICR/GIE classification, high level of CD8 ⁺ infiltrate and retained tumor HLA class I expression
10	Week 4	R	HIGH ICR	GIE	1087	3		
10	Week 12	R	HIGH ICR	GIE	493	2		
11	Week 0	R	LOW ICR	NON-GIE	29	1	NO	Response not associated with the observed ICR/GIE/CD8/HLA profile, but explained by clinical behaviour of tumor biopsies and target lesions in a patient with SD response (see panel B)
11	Week 4	R	LOW ICR	NON-GIE	82	2		
11	Week 12	R	LOW ICR	NON-GIE	680	NA		
1	Week 0	NR	HIGH ICR	GIE	564	1	YES	Lack of response associated with low level of CD8 ⁺ infiltrate and defective tumor HLA class I expression in spite of High ICR/GIE classification
1	Week 4	NR	HIGH ICR	GIE	153	0		
1	Week 12	NR	HIGH ICR	GIE	171	2		
2	Week 0	NR	LOW ICR	NON-GIE	65	0	YES	Lack of response associated with Low ICR/Non GIE classification, low level of CD8 ⁺ infiltrate and defective tumor HLA class I expression
2	Week 4	NR	LOW ICR	NON-GIE	142	1		
2	Week 12	NR	LOW ICR	NON-GIE	194	0		
6	Week 0	NR	LOW ICR	GIE	52	1	YES	Lack of response associated with Low ICR/GIE classification, low level of CD8 ⁺ infiltrate and defective tumor HLA class I expression
6	Week 4	NR	LOW ICR	GIE	86	2		
7	Week 0	NR	LOW ICR	NON-GIE	9	3	YES	Lack of response associated with Low ICR/ Non-GIE classification, low level of CD8 ⁺ infiltrate, in spite of retained tumor HLA class I expression
7	Week 4	NR	HIGH ICR	NON-GIE	NA	3		
7	Week 12	NR	LOW ICR	NON-GIE	107	3		
8	Week 0	NR	LOW ICR	NON-GIE	15	1	YES	Lack of response associated with Low ICR/ Non-GIE classification, low level of CD8 ⁺ infiltrate, in spite of retained tumor HLA class I expression
8	Week 4	NR	LOW ICR	NON-GIE	107	3		
8	Week 12	NR	LOW ICR	NON-GIE	201	3		
9	Week 0	NR	HIGH ICR	NON-GIE	550	1	YES	Lack of response associated with High ICR/ Non-GIE classification, and loss of HLA class I on tumor, in spite of high level of CD8 ⁺ infiltrate
9	Week 4	NR	HIGH ICR	NON-GIE	252	0		
9	Week 12	NR	HIGH ICR	NON-GIE	922	0		

B

