

SUPPLEMENTAL FIGURES

Multi-omic profiling of cutaneous leishmaniasis infections reveals microbiota-driven mechanisms underlying disease severity

Camila Farias Amorim¹, Victoria M. Lovins², Tej Pratap Singh¹, Fernanda O. Novais³, Jordan C. Harris², Aleksandro S. Lago⁴, Lucas P. Carvalho^{4,5}, Edgar M. Carvalho^{4,5}, Daniel P. Beiting¹, Phillip Scott^{1*}, Elizabeth A. Grice^{2*}

¹Department of Pathobiology, School of Veterinary Medicine, University of Pennsylvania, Philadelphia, Pennsylvania, 19104, United States

²Department of Dermatology, Perelman School of Medicine, University of Pennsylvania, Philadelphia, Pennsylvania, 19104, United States

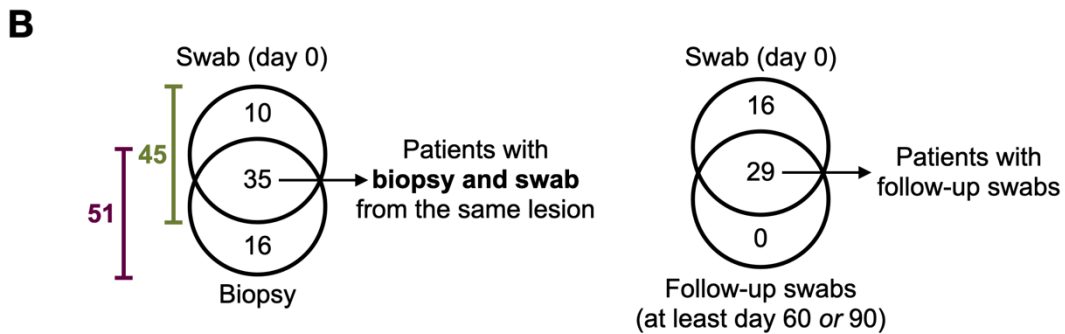
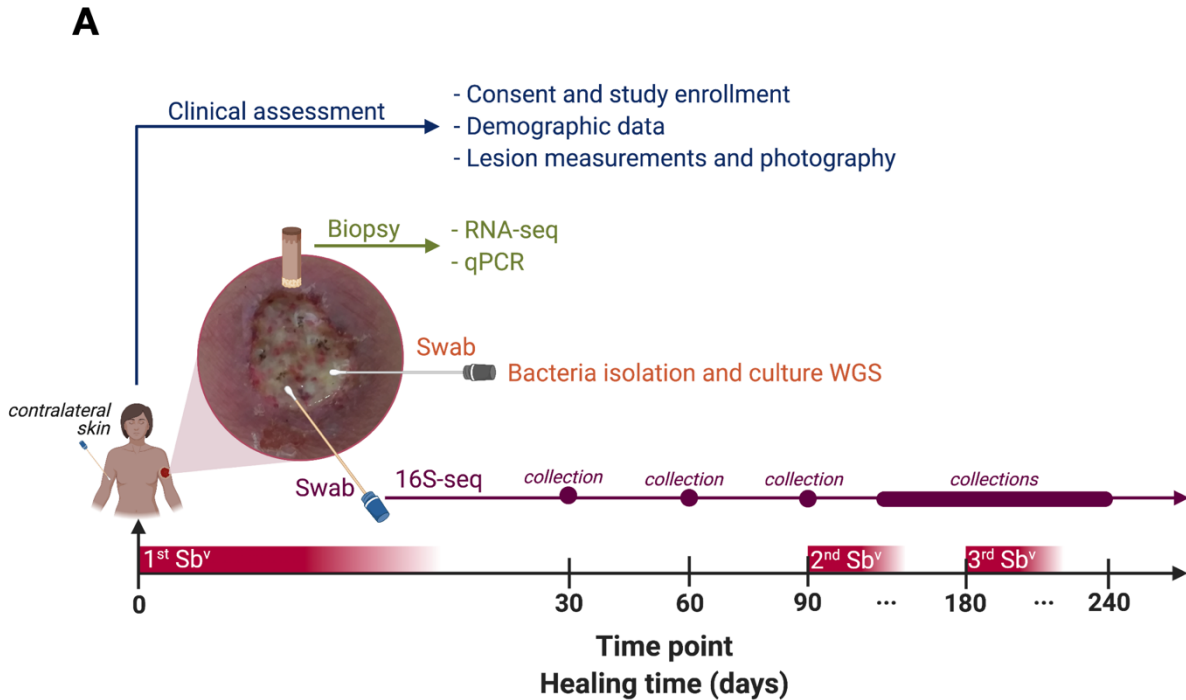
³Department of Microbial Infection and Immunity, College of Medicine, The Ohio State University, Columbus, Ohio, 43210, United States

⁴Laboratório de Pesquisas Clínicas do Instituto de Pesquisas Gonçalo Muniz – Fiocruz, Salvador, Bahia, 40296-710, Brazil

⁵Immunology Service, Professor Edgard Santos University Hospital Complex, Federal University of Bahia, Salvador, Bahia, 40110-060, Brazil.

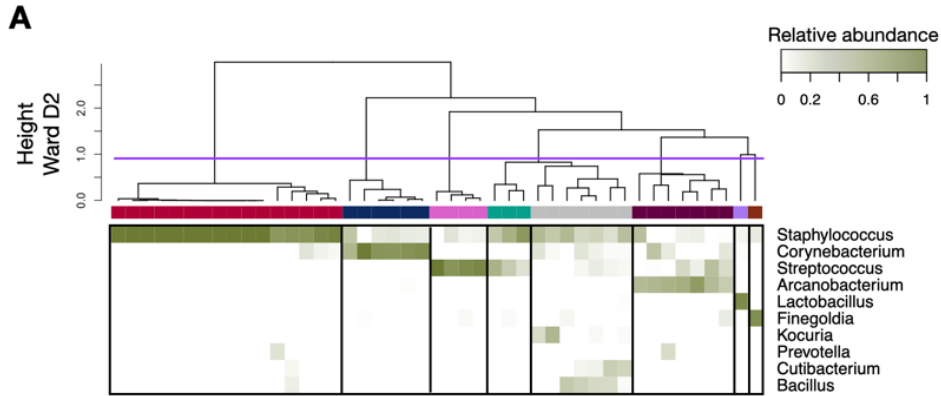
*Corresponding authors. Email: egrice@pennmedicine.upenn.edu, psscott@vet.upenn.edu

Supplemental Figure 1. Study design, clinical metadata, and dataset sample inventory. A) A schematic summarizing the sample types and time points of collection for this study. B) Venn diagram indicates the number of biopsies and swabs for 16S-seq collected from the same lesion and patient. C) A heatmap describes the sample inventory for each participating patient and their associated clinical metadata.



Supplemental Figure 2. Microbiome clusters definitions and association with clinical metadata.

A) Unsupervised hierarchical clustering (HC) analysis with Ward.D2 clustering method were calculated from a relative abundance matrix of top 10 taxa to classify samples into eight distinct microbiome profiles, or “clusters”. A consensus of relative abundance means per sample, and number of dominant taxa in the community (>80% of total dominance and >2, respectively) were used as thresholds to cluster the microbiome groups. B) Multivariate linear regression analysis was calculated between the Microbiome clusters (M0-M7) and clinical metadata using the *lm()* function in R.

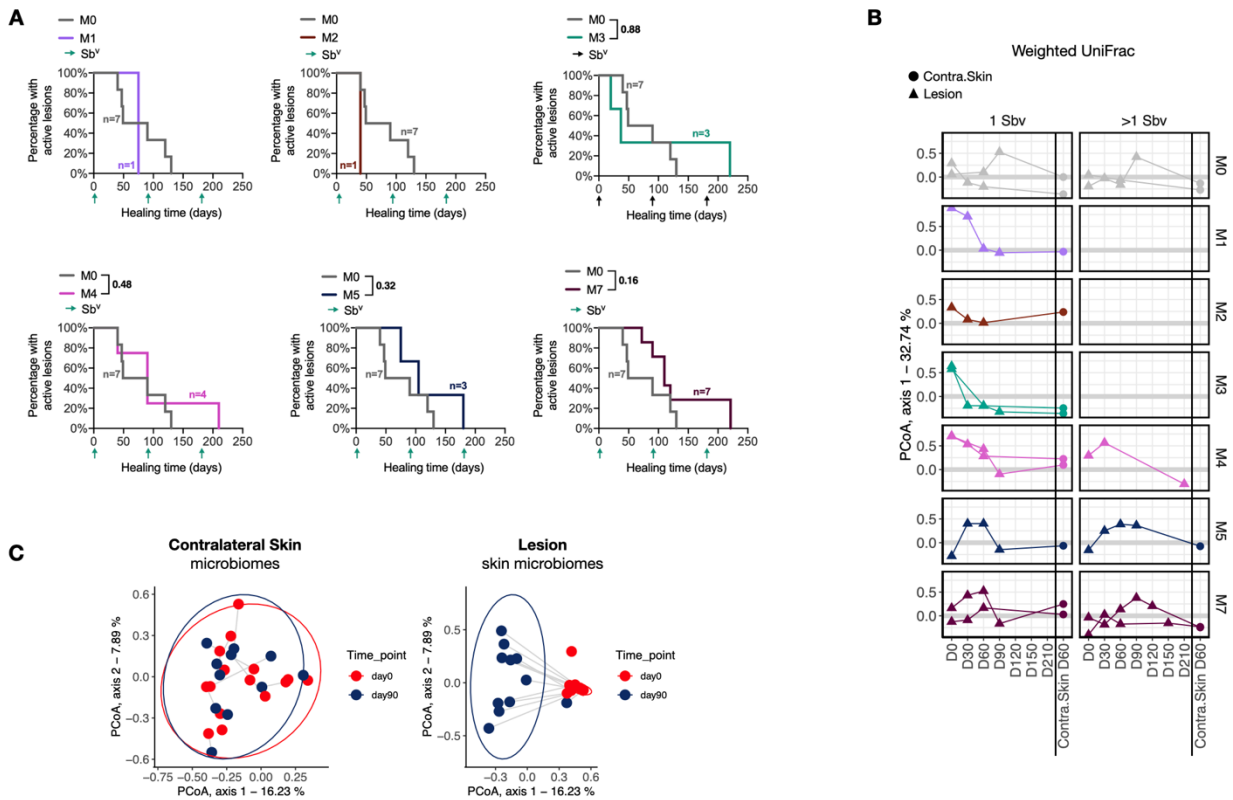


B

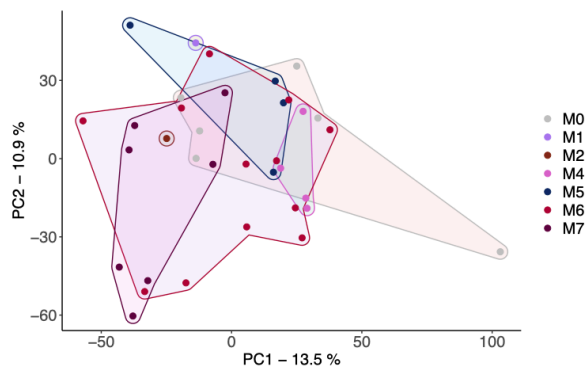
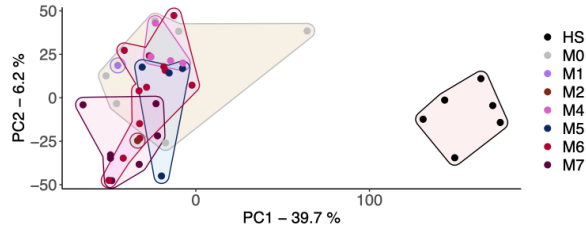
Multivariate linear regression model: Microbiome cluster vs. Age, Sex, Lesion size, DTH, Lymphadenopathy				
	Estimate	Std.Error	t value	Pr(> t)
(Intercept)	4.014651	2.5935503	1.548	0.13
Age	0.0010747	0.0395538	0.027	0.978
Sex	0.6015822	0.8833021	0.681	0.5
Lesion size (mm2)	0.0006427	0.0010042	0.64	0.526
DTH (mm2)	-0.0015454	0.0033215	-0.465	0.644
Lymphadenopathy	-0.4494788	0.9347437	-0.481	0.633

Microbiome cluster residuals: Min=-4.6844; 1Q=-1.3933; Median=0.9822; 3Q=1.6368; Max=2.8452
 Residual standard error: 2.466 on 39 degrees of freedom
 Multiple R-squared=0.0483; Adjusted R-squared=-0.07371;
 F-statistic=0.3959 on 5 and 39 DF; p-value: 0.8486

Supplemental Figure 3. Impact of different microbiome dysbiosis in the lesion healing time in patients infected by *L. braziliensis*. A) Survival curves for the healing time for lesions of patients from M1, M2, M3, M4, M5, M7 vs. M0 cluster. Patients who received an alternative form of treatment from an ongoing clinical trial in the clinic were not considered or added to the clinical outcome-related analysis. Log-rank (Mantel-Cox) test was used to calculate the statistical significance. B) PCoA showing component 1 calculated from weighted UniFrac dissimilarity analysis, including longitudinal swab samples from the M1, M2, M3, M4, M5, M7 and M0 clusters (Day0-Day210) and swab samples from the contralateral skin of the same patient. Patients were divided for analysis according to the number of Sbv rounds required for complete healing (1 vs. >1 round of Sbv). The connecting lines indicate samples collected from the same patient over time. C) Antimony therapy does not affect unaffected skin microbiome (contralateral skin). PCoA calculated from weighted UniFrac dissimilarity analysis including longitudinal swab samples from the lesion and contralateral skin of CL patients at Day0 and Day90. Lines connect samples from the same lesions. Only patients treated with Sbv and with samples available from those two time points were included in this analysis.

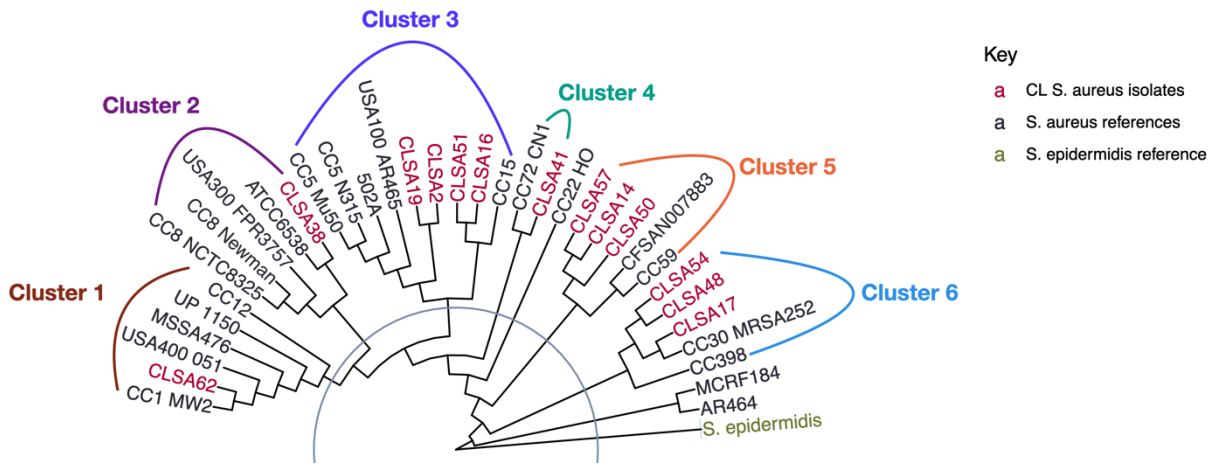


Supplemental Figure 4. Principal Component Analysis (PCA) on whole host transcriptome with patients with distinct microbiome clusters. Principal Component Analysis (PCA) showing the principal component (PC) 1 and PC2 for RNA-seq data from CL lesions with microbiome cluster available, n=35 (characterized from the 16S-seq analysis) and Healthy skin (HS), n=7.



Supplemental Figure 6. Staphylococcus isolates from CL lesions and associated clinical metadata and RNA-seq/16S-seq results. A) 13 *S. aureus* isolates were short-read whole genome sequenced and combined with 22 publicly available *S. aureus* genomes to build out in-house *S. aureus* pangenome. A Hierarchical clustering was performed between the *S. aureus* genomes, together with a publicly available *S. epidermidis* genome to serve as comparison. B) Clinical metadata, RNA-seq and 16S-seq-associated data from the lesions where the CL *S. aureus* isolates originated from. C) Distribution of lesion biopsies according to the *S. aureus* transcript abundances (in log10 counts per million, CPM).

A

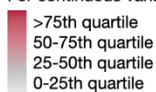


B

	Clinical metadata						16S-seq (swab) Microbiome profile		Lesion Biopsy			
	Cluster	CL <i>S. aureus</i>	Age	Sex	Lesion size (mm ²)	Lymphadenopathy	Healing time (days)	Clinical Outcome*	Microbiome cluster	RNA-seq <i>S. aureus</i> (CPM)	qPCR Bacterial load	qPCR Parasite load
	1	CLSA62	26-30	male	0-25th	yes	130	> 1 Sb ^v	NA	NA	NA	NA
	2	CLSA38	41-45	male	50-75th	yes	50	1 Sb ^v	NA	>75th	>75th	>75th
	3	CLSA2	16-20	male	50-75th	yes	180	> 1 Sb ^v	M6	>75th	>75th	>75th
	3	CLSA16	16-20	male	50-75th	yes	120	> 1 Sb ^v	M7	>75th	25-50th	>75th
	3	CLSA19	21-25	male	50-75th	yes	72	1 Sb ^v	M7	>75th	25-50th	50-75th
	3	CLSA51	21-25	male	25-50th	yes	64	1 Sb ^v	NA	50-75th	25-50th	50-75th
	4	CLSA41	31-35	male	>75th	no	120	> 1 Sb ^v	NA	>75th	>75th	25-50th
	5	CLSA14	46-50	male	>75th	yes	221	> 1 Sb ^v	M6	25-50th	>75th	>75th
	5	CLSA50	16-20	male	0-25th	yes	63	1 Sb ^v	NA	>75th	0-25th	50-75th
	5	CLSA57	31-35	male	25-50th	yes	180	> 1 Sb ^v	M6	NA	NA	NA
	6	CLSA17	21-25	female	25-50th	no	45	1 Sb ^v	M6	25-50th	50-75th	0-25th
	6	CLSA48	36-40	female	25-50th	no	100	> 1 Sb ^v	NA	>75th	0-25th	>75th
	6	CLSA54	16-20	male	0-25th	yes	135	> 1 Sb ^v	M6	NA	NA	NA

Picked for exp. in mice →

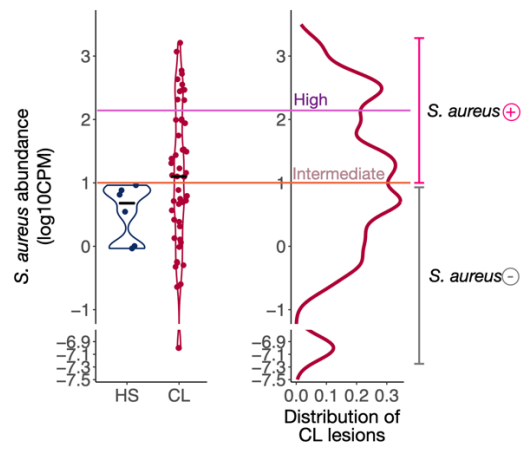
For continuous variables:



Relative to values in the entire cohort of 62 patients

*1 round of antimony Sb^v = Cure, >1 round of antimony Sb^v = Failure

C



Supplemental Figure 7. Number of CD90.2-, $\alpha\beta$ T cells and CD4+ T cells in *S. aureus* and *L. braziliensis* treatment protocol in C57BL/6 mice, with blockade of IL-1 α , IL-1 β and IL-1R with monoclonal antibodies. Number of CD90.2-, $\alpha\beta$ T cells and CD4+ T cells recovered from the co-infected ears in week six. Non-parametric Mann-Whitney test was used for statistical significance, *P<0.05, **P<0.01, ***P<0.001. Violin plots and median are represented in the plots when appropriate.

