

1 **The fading of the mpox outbreak among men who have sex with**
2 **men: a mathematical modelling study**

3

4 **Maria Xiridou, Fuminari Miura, Philippe Adam, Eline Op de Coul, John de Wit, Jacco**
5 **Wallinga**

6

7

SUPPLEMENT

8

9 **The transmission model**

10 We developed a deterministic compartmental model that describes monkeypox virus (MPXV)
11 transmission among men who have sex with men (MSM). A schematic diagram of the model
12 is shown in Figure 1 in the main text. We accounted only for transmission via sexual or
13 intimate contacts among main (steady) and casual sex partners (for brevity, referred to as
14 “sexual contacts”).

15

16 **Sexual partners**

17 MSM were divided into $G = 4$ sexual activity groups, based on the total number of partners
18 with whom they had sexual/intimate contacts. The number of these partners was obtained
19 from data from the first round of the “COVID-19, Sex, and Intimacy Survey”, carried out in
20 the summer of 2020 [1]. The survey was focussed on the impact of the first wave of the
21 pandemic. However, as reference, participants were asked also about their sexual behaviour in
22 the second half of 2019. We used the data of 2019, as representative of sexual activity without
23 the temporal fluctuations caused by the COVID-19 pandemic, but also because participants
24 were asked to report the number of male partners with whom they “had sex/intimacy in the
25 second half of 2019”. Based on this number, we divided the population into four sexual
26 activity groups: very low, fairly low, fairly high, and very high activity. The parameters
27 relating to sexual behaviour of each activity group are shown in Table 2.

28

29 **The course of MPXV infection**

30 Individuals enter the population as susceptible (S_{ui}) when they become sexually active. After
31 infection, individuals are exposed but not infectious (E_{ui}) and later become infectious (I_{ui}).
32 When individuals have symptoms and/or they are tested positive for MPXV infection, they
33 may refrain from physical/sexual contacts or may be in isolation/confinement. We refer to

34 these individuals as “abstinent” (Y_{ui}). We assumed that individuals start being abstinent $1/\delta$
35 days after becoming infectious and that abstinent infectious cases can still infect others, with a
36 lower probability of transmission, for instance, because they do not completely refrain from
37 sex contacts. Most of the infectious mpox cases recover after a few weeks and become
38 immune (R_i), but a small fraction of the infectious cases may develop complications and need
39 hospitalization (H_i) or die due to mpox.

40

41 Individuals born before 1974 were vaccinated in their first year of age against smallpox and
42 that protects against MPXV infection and/or disease. Smallpox vaccination was interrupted in
43 the Netherlands in 1974. Therefore, we assumed that in 2022 approximately 25% of sexually
44 active MSM is vaccinated (S_{vi}) via the old smallpox vaccination programmes, based on the
45 age distribution of adult men in the Netherlands [2, 3]. We assumed that vaccinated men can
46 still get infected with MPXV (and become exposed, E_{vi}), but at a lower rate than that for
47 unvaccinated individuals. Vaccinated exposed individuals have a lower rate of becoming
48 infectious (I_{vi}), than unvaccinated exposed individuals. Vaccinated infectious cases may be
49 abstinent (Y_{vi}). We assumed that vaccination reduces the level of infectivity of vaccinated
50 infectious cases, but the recovery rate, the hospitalization rate, and the MPXV-related death
51 rate are similar for vaccinated and unvaccinated individuals.

52

53 To account for different levels of protection by the old and the new vaccines, in the model we
54 included individuals vaccinated in 2022 separately from those who had been vaccinated in the
55 past (before 1974). The respective compartments in the model are denoted with S_{pi} , E_{pi} , I_{pi} ,
56 Y_{pi} (uninfected, exposed, not abstinent infectious, abstinent infectious, respectively) with the
57 subscript p denoting those vaccinated in 2022 by means of pre-exposure or post-exposure
58 prophylaxis. Susceptible individuals (unvaccinated or vaccinated in the past) may be

59 vaccinated in 2022 at a rate φ_{1i} . Exposed individuals (unvaccinated or vaccinated in the past)
60 may be vaccinated in 2022 at a rate φ_{2i} . The vaccination rates φ_{1i} and φ_{2i} depend on the
61 activity group i . We assumed that the protection of the new vaccine (against infection and
62 disease) is higher than that from the old vaccine (Table 1). Both vaccine protections were
63 modelled as a proportional reduction in the transmission rate.

64

65 Hospitalized cases may die due to mpox or recover and become immune (R_i). All MSM
66 entering the sexually active population in 2022 are unvaccinated and susceptible to MPXV.

67

68 **Model equations**

69 The model is described by the system of ordinary differential equations shown below. The
70 subscript u denotes unvaccinated individuals, v denotes individuals vaccinated in the past
71 (with the old vaccine), p denotes individuals vaccinated in 2022 (with the new vaccine), and
72 $i = 1, 2, \dots, G$ denotes the i -th sexual activity group.

73

74 Equations for unvaccinated individuals:

$$75 \quad \frac{dS_{ui}}{dt} = -(\lambda_i + \varphi_{1i} + \mu)S_{ui} + \mu N_i$$

$$76 \quad \frac{dE_{ui}}{dt} = \lambda_i S_{ui} - (\varphi_{2i} + \theta + \mu)E_{ui}$$

$$77 \quad \frac{dI_{ui}}{dt} = \theta E_{ui} - (\delta + \zeta + \mu + \mu_d)I_{ui}$$

$$78 \quad \frac{dY_{ui}}{dt} = \delta I_{ui} - (\gamma + \zeta + \mu + \mu_d)Y_{ui}$$

79

80 Equations for individuals vaccinated in the past:

$$81 \quad \frac{dS_{vi}}{dt} = -(\sigma_1 \lambda_i + \varphi_{1i} + \mu)S_{vi}$$

$$82 \quad \frac{dE_{vi}}{dt} = \sigma_1 \lambda_i S_{vi} - (\theta + \varphi_{2i} + \mu) E_{vi}$$

$$83 \quad \frac{dI_{vi}}{dt} = \sigma_1 \theta E_{vi} - (\delta + \zeta + \mu + \mu_d) I_{vi}$$

$$84 \quad \frac{dY_{vi}}{dt} = \delta I_{vi} - (\gamma + \zeta + \mu + \mu_d) Y_{vi}$$

85

86 Equations for individuals vaccinated in 2022:

$$87 \quad \frac{dS_{pi}}{dt} = \varphi_{1i}(S_{ui} + S_{vi}) - (\sigma_2 \lambda_i + \mu) S_{pi}$$

$$88 \quad \frac{dE_{pi}}{dt} = \sigma_2 \lambda_i S_{pi} + \varphi_{2i}(E_{ui} + E_{vi}) - (\theta + \mu) E_{pi}$$

$$89 \quad \frac{dI_{pi}}{dt} = \sigma_2 \theta E_{pi} - (\delta + \mu) I_{pi}$$

$$90 \quad \frac{dY_{pi}}{dt} = \delta I_{pi} - (\gamma + \mu) Y_{pi}$$

91

92 Equations for recovered/immune and hospitalized individuals:

$$93 \quad \frac{dR_i}{dt} = \gamma(Y_{ui} + Y_{vi} + Y_{pi} + H_i) + (1 - \sigma_1)\theta E_{vi} + (1 - \sigma_2)\theta E_{pi} - \mu R_i$$

$$94 \quad \frac{dH_i}{dt} = \zeta(I_{ui} + I_{vi} + Y_{ui} + Y_{vi}) - (\gamma + \mu + \mu_d) H_i$$

95

96 The parameters and variables in these equations are explained in the following sections and in

97 Tables 1-3.

98

99 **Transmission rate**

100 The rate at which MSM in activity group i get infected with MPXV is $\lambda_i = \lambda_{mi} + \lambda_{ci}$, where

101 λ_{mi} and λ_{ci} denote the rates of getting infected by main and casual partners, respectively:

102

- 103 • The rate of getting infected by main partners:

$$104 \quad \lambda_{mi} = q_i \sum_{k=u,v,p} \sum_{j=1}^4 m_{Mij} [1 - (1 - \beta_{sk})^{u_{ij}}] \frac{I_{kj} + wY_{kj}}{N_j}$$

- 105 • The rate of getting infected by casual partners:

$$106 \quad \lambda_{ci} = \alpha_{ci} \sum_{k=u,v,p} \sum_{j=1}^4 \beta_{sk} m_{Cij} \frac{I_{kj} + wY_{kj}}{N_j}$$

107

108 In these equations, the following notation is used:

- 109 • q_i is the fraction of MSM of activity group i with a main partner.
- 110 • u_{ij} is the frequency of sex contacts between main sexual partners of activity groups i, j ,
 111 calculated as $u_{ij} = (u_i + u_j)/2$, from the contact frequency u_i and u_j of sexual activity
 112 groups i and j , respectively.
- 113 • β_{sk} is the probability of transmission of MPXV per sexual/intimate contact from an
 114 infectious individual who is unvaccinated ($k = u$), vaccinated in the past ($k = v$), or
 115 vaccinated in 2022 ($k = p$), with $\beta_{su} = \beta_s$, $\beta_{sv} = v_1\beta_s$, $\beta_{sp} = v_2\beta_s$. The probability β_s
 116 of transmission per sexual contact with an unvaccinated individual is reduced by v_1 for
 117 those who were vaccinated in the past and by v_2 for those vaccinated in 2022.
- 118 • w is a factor reducing the transmission potential of an infectious individual practicing
 119 sexual abstinence compared to infectious individuals not in abstinence.
- 120 • α_{ci} is the number of casual sex contacts per day for men in activity group i .
- 121 • N_j is the total size of activity group j and $N = \sum_{j=1}^G N_j$ is the total size of the MSM
 122 population.
- 123 • m_{Mij} and m_{Cij} are parameters that define the level of mixing between sexual activity
 124 groups i, j , when forming main and casual partnerships, respectively. These are defined
 125 by the equations:

126
$$m_{Mij} = \varepsilon_M \delta_{ij} + (1 - \varepsilon_M) \frac{\alpha_{Mj} N_j}{\sum_{v=1}^G \alpha_{Mv} N_v} \quad \text{and} \quad m_{cij} = \varepsilon_c \delta_{ij} + (1 - \varepsilon_c) \frac{\alpha_{cj} N_j}{\sum_{v=1}^G \alpha_{cv} N_v},$$

127 where δ_{ij} is the Kronecker delta (being equal to 1, if $i = j$; and equal to 0, otherwise) and
128 the parameters ε_s , ε_c determine the level of assortativeness in mixing of activity groups
129 when forming main and casual partnerships, respectively (if $\varepsilon_i = 1$, then mixing is
130 assortative; if $\varepsilon_i = 0$, then mixing is proportionate).

131

132 **The size of the MSM population**

133 Estimates of the size of the MSM population vary from 111,072 [4] to 392,000 [5]. The
134 variation depends mostly on the ages included in the estimate (for instance, from 15 or 17
135 years old; up to 65 or 69 years old) and the definition of MSM (men who had sex with men in
136 the previous six/twelve months; or ever having sex with men; or identifying themselves as
137 homosexual/bisexual). Based on the size of the male population [2] and prevalence estimates
138 of same-sex behaviour [5], we assumed that the number of MSM in 2022 was around
139 250,000. Due to uncertainty about this estimate, we repeated the analyses with 200,000 MSM
140 and 300,000 MSM.

141

142 **Changes that may have occurred in the first three months of the outbreak**

143 By ordering diagnosed mpox cases according to date of symptom onset, the peak was
144 between 6 and 10 July 2022. The first diagnosis of mpox was on 20 May 2022. By the
145 beginning of June, the number of diagnoses was increasing and there were messages about
146 mpox in the news, social media, and MSM websites [6-9]. This has probably enhanced
147 awareness among MSM and health care practitioners, enabling earlier recognition of mpox
148 symptoms, even during the prodromal phase with systemic symptoms like fever, fatigue, and
149 ache. In an online survey carried out in August 2022, most MSM responded correctly to
150 questions about symptomatology and routes of transmission of mpox and reported to be

151 willing to refrain from close physical and sexual contacts if they were infected with MPXV
152 [10]. As the severity of the outbreak was increasing, MSM were possibly more willing to
153 refrain from sexual/intimate contacts when they suspected or were diagnosed with MPXV
154 infection, thus reducing the time they were infectious and not yet sexually abstinent. The
155 spread of information about mpox and the severity of the outbreak may have also influenced
156 the sexual behaviour of MSM. In the same survey, more than half of the participants reported
157 a reduction in their sexual activity due to the mpox outbreak [10]. Furthermore, sex venues
158 and parties reported low numbers of visitors in July 2022 [11], with the reduction reaching its
159 maximum at the end of July, when some club owners observed up to 30% less visitors than
160 what was expected (P. Zantkuijl, personal communication). This points to a decline in sexual
161 activity of men visiting these accommodations.

162

163 Therefore, in this study, we examined two possible changes: (a) a reduction in the duration of
164 the infectious period while not abstinent and (b) a reduction in the number of casual partners.
165 The level and the timing of the changes was obtained from the fitting process. We examined
166 two scenarios with changes either (a) at one time point T_2 in the period 5-15 July 2022 or
167 (b) at two time points T_1 in the period 17-27 June 2022 and T_2 in the period 5-15 July 2022.
168 These time periods were close to messages placed on ManTotMan socials and the
169 announcement of the Dutch government on 7 July 2022 to start with the monkeypox
170 vaccination programme.

171

172 We included a reduction D_{4j} in the number of casual partners of men in the very high sexual
173 activity group, D_{3j} for men in the fairly high sexual activity group, and a reduction D_{2j} for
174 men in the very low and fairly low sexual activity groups. The reduction D_{ij} occurred on day
175 $T_j = T_1$ or $T_j = T_2$. The six values D_{ij} ($i = 2,3,4$ and $j = 1,2$) were sampled from the same

176 range (0-30% reduction), since we are uncertain about the occurrence of the decline.
177 Similarly, we sampled three values for the duration of the not-abstinent infectious period: one
178 for the duration in the beginning of the outbreak, a second value for the period between T_1
179 and T_2 , and a third value for the period after T_2 . All three values were sampled from the same
180 range (2-8 days) since we were uncertain whether a change in this duration occurred and
181 when.

182

183

184 **Model fitting**

185 The model was fitted to data on the number of diagnosed mpox cases using a Bayesian
186 approach. Parameters relating to sexual behaviour were estimated from data or obtained from
187 the literature (Table 2), except from: (a) the two parameters for assortativeness in sexual
188 mixing and (b) the number of casual partners of the group with a very high sexual activity
189 level. These were included as uncertain parameters, due to lack of reliable data and because
190 the model results were very sensitive to these parameters (based on our preliminary analyses).
191 Further, most of the parameters relating to mpox were uncertain (Table 1) and were obtained
192 via the fitting process.

193

194 The uncertain parameters were divided into two groups:

- 195 1. Parameters relating to behavioural changes that occurred in June/July 2022 (Table 3):
196 change in the number of casual partners; change in the number of days that an individual
197 is infectious and not in abstinence; and two parameters for the timing of these changes.
- 198 2. Main parameters (Table 1): all the other parameters, except those relating to the changes
199 that occurred in June/July 2022.

200

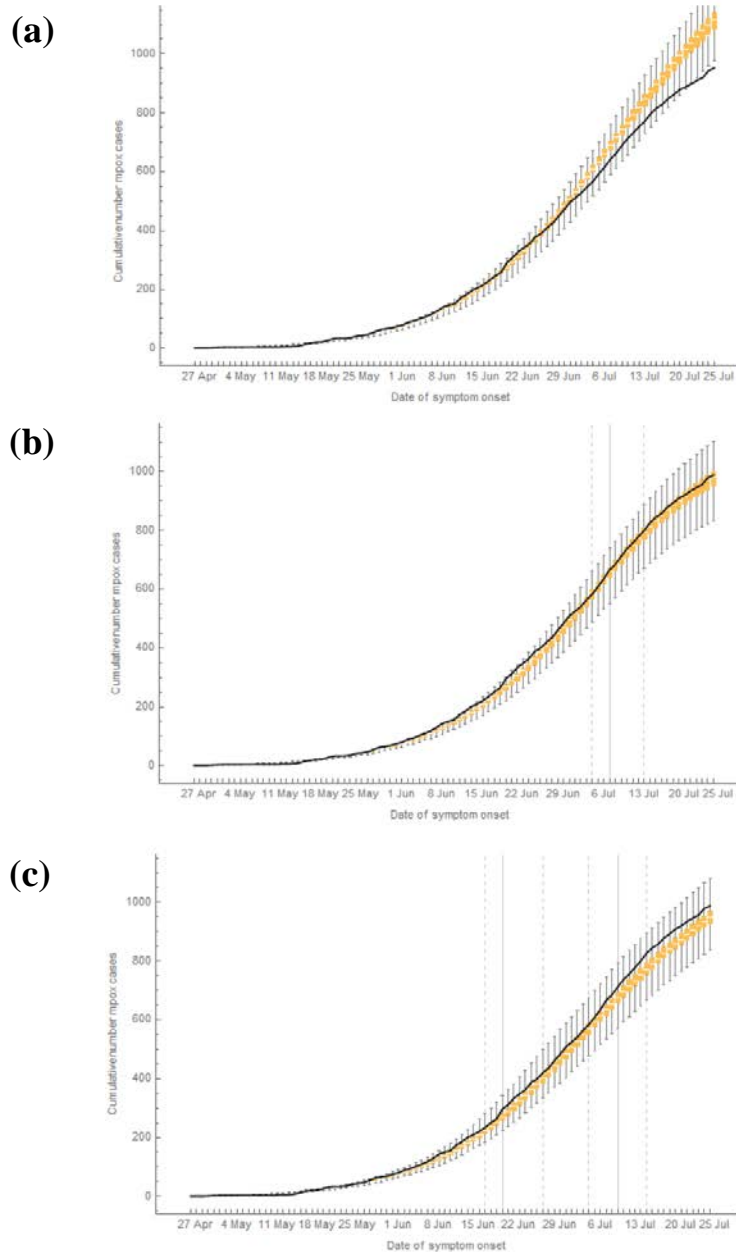
201 The fitting process was carried out in two steps:

202 1. In the first step, we fitted the model to the numbers of daily mpox cases registered in the
203 national database of notifiable infectious diseases of the Netherlands until 17 June or until
204 5 July 2022. We defined uniform prior distributions for the uncertain parameters (Tables
205 1). Using Latin Hypercube Sampling [12], we sampled 10,000 combinations of values
206 from the prior distributions and repeated the model calculations with each parameter
207 combination. From the model, we calculated the daily numbers of mpox cases with each
208 parameter combination. We calculated the Poisson likelihood of the above numbers, thus
209 obtaining the posterior distributions of the uncertain parameters (except those relating to
210 the behavioural changes in June/July 2022), reflecting the situation in the beginning of the
211 outbreak.

212

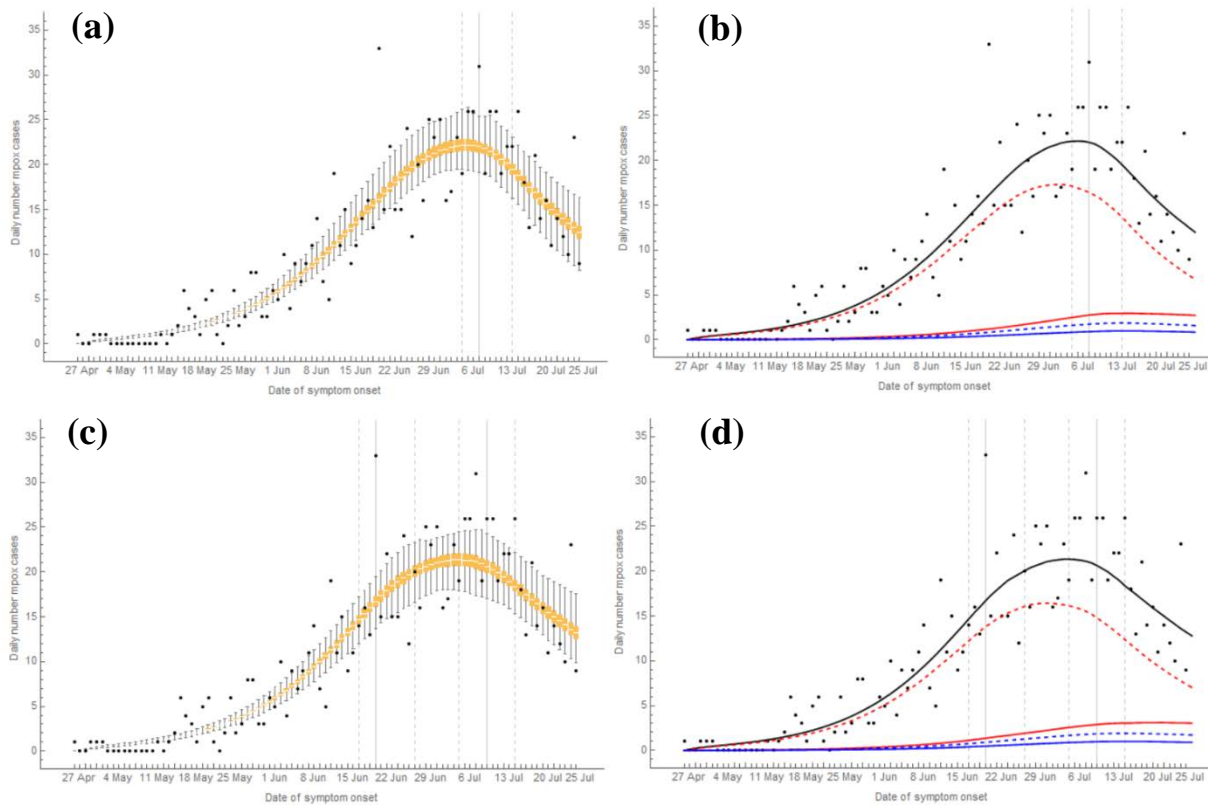
213 2. In the second step, we used the posterior distributions obtained from the first step of the
214 fitting process and fitted the model to data from 17 June or 5 July 2022 until 25 July 2022.
215 The modelled mpox cases were compared with the respective data with date of symptom
216 onset in this time interval. We calculated their Poisson likelihood and obtained the
217 posterior distributions of the uncertain parameters relating to behavioural changes that
218 occurred in June/July 2022.

219



220

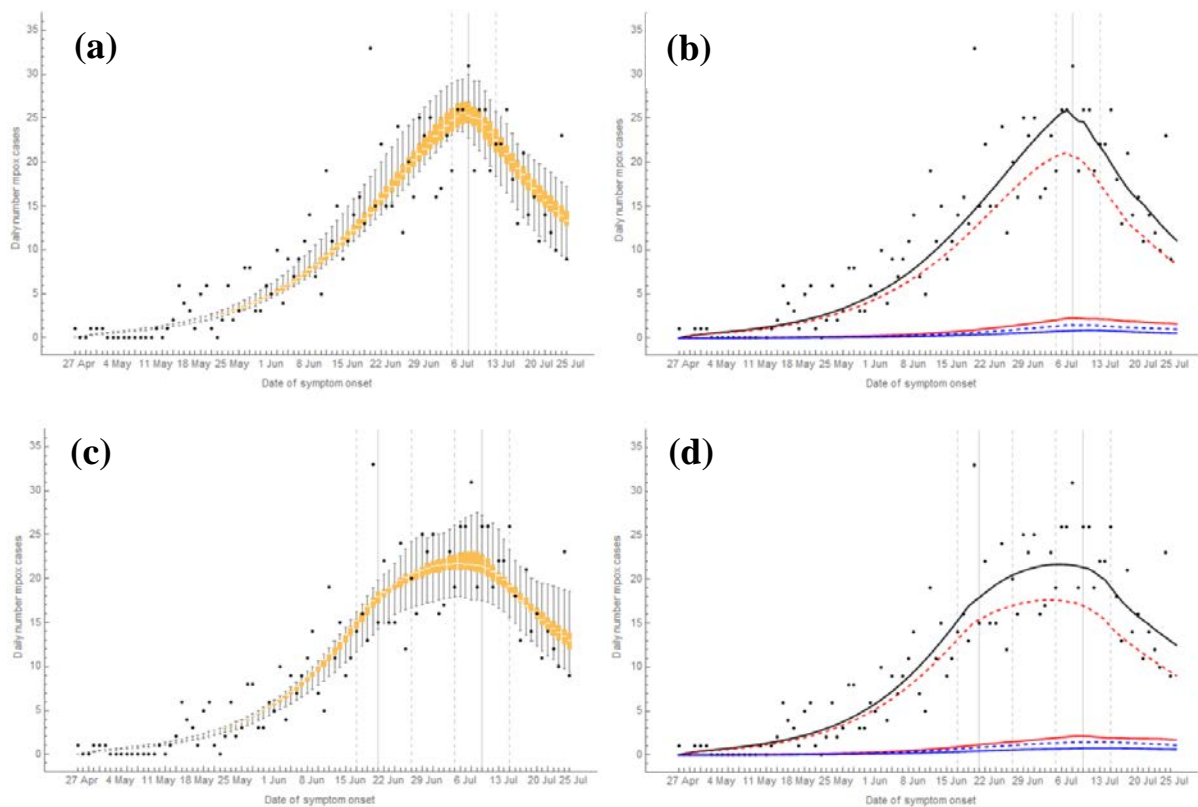
221 **Figure S1.** The cumulative number of mpxv cases among MSM in the Netherlands from 27 April to
 222 25 July 2022. Cases are shown according to date of symptom onset (on horizontal axes). Solid black
 223 line shows data from 27 April to 25 July 2022, from the national database of notifiable infectious
 224 diseases of the Netherlands. Orange box-plots show the medians and interquartile ranges obtained
 225 from the model in a population of 250,000 MSM (a) without behavioural changes; (b) with
 226 behavioural changes only in July 2022; (c) with behavioural changes in June and in July 2022. In (b)-
 227 (c), the vertical grey lines show the medians (solid line) and the 95% credible intervals (dashed lines)
 228 of the time point at which the changes occurred, as obtained from the model fitting.



229

230 **Figure S2.** The daily number of mpxv cases among MSM in the Netherlands from 27 April to 25 July
 231 2022. Black bullets show data from the national database of notifiable diseases of the Netherlands; the
 232 other lines were calculated from the model. Mpxv cases are shown according to date of symptom
 233 onset. Left panels: box-plots of daily number of mpxv cases in the overall MSM population. Right
 234 panels: median daily number of mpxv cases in the overall MSM population (black line), in the groups
 235 with high sexual activity level (red lines), and in the groups with low sexual activity level (blue lines).
 236 (a), (b): with behavioural changes in July 2022; (c), (d): with behavioural changes in June and July
 237 2022. Vertical grey lines show medians (solid lines) and 95% credible intervals (dashed lines) of the
 238 day at which the behavioural changes occurred, as obtained from the model fitting. Model results were
 239 calculated in a population of 200,000 MSM.

240



241

242 **Figure S3.** The daily number of mpxo cases among MSM in the Netherlands from 27 April to 25 July

243 2022. Black bullets show data from the national database of notifiable diseases of the Netherlands; the

244 other lines were calculated from the model. Mpxo cases are shown according to date of symptom

245 onset. Left panels: box-plots of daily number of mpxo cases in the overall MSM population. Right

246 panels: median daily number of mpxo cases in the overall MSM population (black line), in the groups

247 with high sexual activity level (red lines), and in the groups with low sexual activity level (blue lines).

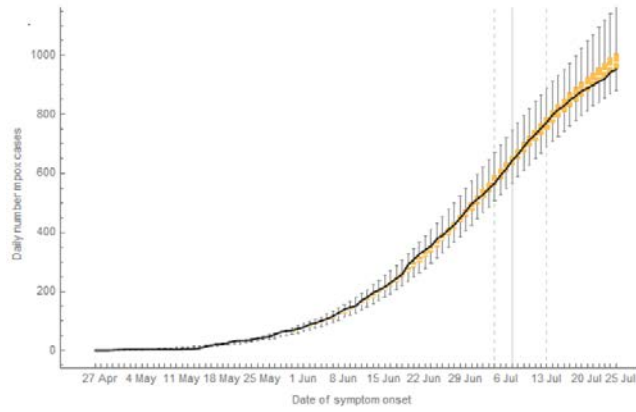
248 (a), (b): with behavioural changes in July 2022; (c), (d): with behavioural changes in June and July

249 2022. Vertical grey lines show medians (solid lines) and 95% credible intervals (dashed lines) of the

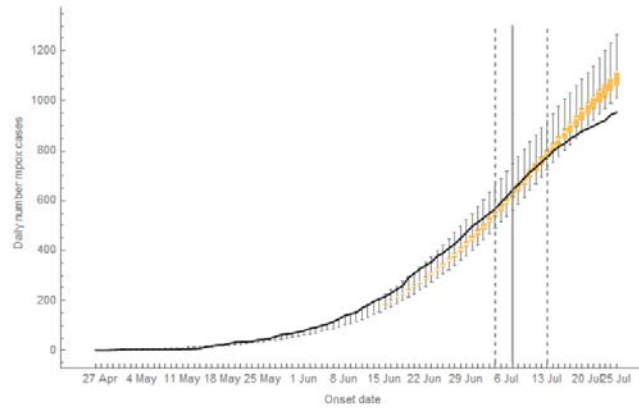
250 day at which the behavioural changes occurred, as obtained from the model fitting. Model results were

251 calculated in a population of 300,000 MSM.

(a)



(b)



252

253 **Figure S4.** The cumulative number of mpox cases among MSM in the Netherlands from 27 April to
254 25 July 2022. Cases are shown according to date of symptom onset (on horizontal axes). Solid black
255 line shows data from the national database of notifiable infectious diseases of the Netherlands. Orange
256 box-plots show the medians and interquartile ranges obtained from the model in a population of
257 200,000 MSM (top) or 300,000 MSM (bottom), without behavioural changes.

258 Table S1. Posterior distributions of uncertain model parameters obtained from the fitting process for the two scenarios with changes in behaviour of MSM
 259 only in July 2022 or in June and July 2022. Results shown are the medians and 95% credible intervals, in a population of 250,000 MSM.
 260

	Changes only in July 2022			Changes in June & July 2022		
	Median	95% range		Median	95% range	
Latent period, days ($1/\theta$)	5.42	5.03	7.52	5.56	5.04	7.52
Infectious period ($1/\gamma + 1/\delta$)	18.75	14.20	26.66	18.45	14.44	26.84
Transmission probability per sex act	0.37	0.33	0.40	0.37	0.32	0.40
Number casual partners per day, very-high activity group	0.96	0.79	0.99	0.96	0.78	1.00
Factor reducing transmission when in abstinence (w)	67%	38%	83%	58%	34%	80%
Assortativeness mixing with main partners (ϵ_M)	0.82	0.71	0.90	0.82	0.71	0.90
Assortativeness mixing with casual partners (ϵ_C)	0.92	0.81	0.95	0.92	0.82	0.95
Vaccination rate before 25 July 2022	0.04%	0.03%	0.05%	0.04%	0.03%	0.05%
Efficacy old vaccine ($v_1 = \sigma_1$)	58%	50%	65%	58%	51%	65%
Efficacy new vaccine ($v_2 = \sigma_2$)	86%	80%	90%	86%	80%	90%
Hospitalization rate, ζ	2%	1%	2%	1%	1%	2%
Days infectious not-abstinent, before T_1	7.15	3.81	7.97	6.89	3.82	7.90
Days infectious not-abstinent, between T_1 and T_2	As before T_1			5.53	2.21	7.89
Days infectious not-abstinent, after T_2	3.20	2.05	7.02	3.62	2.07	7.22
Date of changes in June, T_1	Not applicable			21-6-2022	17-6-2022	26-6-2022
Date of changes in July, T_2	7-7-2022	5-7-2022	13-7-2022	10-7-2022	5-7-2022	14-7-2022
% reduction casual partners, low activity groups, after T_2	15%	1%	29%	13%	1%	29%
% reduction casual partners, fairly-high activity group, after T_2	15%	1%	29%	15%	1%	29%
% reduction casual partners, very-high activity group, after T_2	23%	3%	30%	24%	5%	30%
% reduction casual partners, low activity groups, between T_1 and T_2	Not applicable			16%	0%	29%
% reduction casual partners, fairly-high activity group, between T_1 and T_2				16%	1%	29%
% reduction casual partners, very-high activity group, between T_1 and T_2				11%	1%	28%

261

262 Table S2. Posterior distributions of uncertain model parameters obtained from the fitting process for the two scenarios with changes in behaviour of MSM
 263 only in July 2022 or in June and July 2022. Results shown are the medians and 95% credible intervals, in a population of 200,000 MSM..
 264

	Changes only in July 2022			Changes in June & July 2022		
	Median	95% range		Median	95% range	
Latent period, days ($1/\theta$)	5.77	5.02	7.52	5.82	5.03	7.61
Infectious period ($1/\gamma + 1/\delta$)	19.94	14.79	27.71	21.34	14.80	27.70
Transmission probability per sex act	0.37	0.31	0.40	0.37	0.31	0.40
Number casual partners per day, very-high activity group	0.95	0.75	1.00	0.93	0.78	1.00
Factor reducing transmission when in abstinence (w)	47%	32%	77%	42%	31%	69%
Assortativeness mixing with main partners (ϵ_M)	0.81	0.71	0.90	0.81	0.72	0.90
Assortativeness mixing with casual partners (ϵ_C)	0.93	0.85	0.95	0.92	0.82	0.95
Vaccination rate before 25 July 2022	0.04%	0.03%	0.05%	0.04%	0.03%	0.05%
Efficacy old vaccine ($v_1 = \sigma_1$)	56%	50%	64%	56%	51%	64%
Efficacy new vaccine ($v_2 = \sigma_2$)	85%	80%	90%	85%	80%	90%
Hospitalization rate, ζ	1%	1%	2%	1%	1%	2%
Days infectious not-abstinent, before T_1	6.28	2.82	7.94	6.08	3.22	7.97
Days infectious not-abstinent, between T_1 and T_2	As before T_1			5.82	2.61	7.88
Days infectious not-abstinent, after T_2	4.36	2.06	7.70	4.12	2.09	7.75
Date of changes in June, T_1	Not applicable			21-6-2022	17-6-2022	27-6-2022
Date of changes in July, T_2	10-7-2022	5-7-2022	15-7-2022	10-7-2022	5-7-2022	15-7-2022
% reduction casual partners, low activity groups, after T_2	15%	1%	29%	15%	1%	29%
% reduction casual partners, fairly-high activity group, after T_2	16%	1%	29%	15%	1%	29%
% reduction casual partners, very-high activity group, after T_2	18%	1%	29%	21%	2%	30%
% reduction casual partners, low activity groups, between T_1 and T_2	Not applicable			15%	1%	29%
% reduction casual partners, fairly-high activity group, between T_1 and T_2				16%	1%	29%
% reduction casual partners, very-high activity group, between T_1 and T_2				8%	0%	23%

265

266 Table S3. Posterior distributions of uncertain model parameters obtained from the fitting process for the two scenarios with changes in behaviour of MSM
 267 only in July 2022 or in June and July 2022. Results shown are the medians and 95% credible intervals, in a population of 300,000 MSM..
 268

	Changes only in July 2022			Changes in June & July 2022		
	Median	95% range		Median	95% range	
Latent period, days ($1/\theta$)	5.19	5.04	6.54	5.43	5.05	6.26
Infectious period ($1/\gamma + 1/\delta$)	17.82	15.01	22.00	17.92	14.03	26.48
Transmission probability per sex act	0.38	0.33	0.40	0.37	0.33	0.40
Number casual partners per day, very-high activity group	0.95	0.88	0.99	0.97	0.86	0.99
Factor reducing transmission when in abstinence (w)	74%	50%	83%	68%	41%	81%
Assortativeness mixing with main partners (ϵ_M)	0.78	0.74	0.89	0.81	0.70	0.90
Assortativeness mixing with casual partners (ϵ_C)	0.93	0.88	0.95	0.93	0.81	0.95
Vaccination rate before 25 July 2022	0.04%	0.03%	0.05%	0.04%	0.03%	0.05%
Efficacy old vaccine ($v_1 = \sigma_1$)	61%	52%	64%	60%	51%	63%
Efficacy new vaccine ($v_2 = \sigma_2$)	85%	81%	90%	87%	80%	90%
Hospitalization rate, ζ	2%	1%	2%	2%	1%	2%
Days infectious not-abstinent, before T_1	7.03	5.43	7.85	7.61	4.98	7.97
Days infectious not-abstinent, between T_1 and T_2	As before T_1			5.98	2.37	7.98
Days infectious not-abstinent, after T_2	2.83	2.06	4.16	3.50	2.03	6.40
Date of changes in June, T_1	Not applicable			20-6-2022	18-6-2022	26-6-2022
Date of changes in July, T_2	6-7-2022	5-7-2022	10-7-2022	9-7-2022	5-7-2022	14-7-2022
% reduction casual partners, low activity groups, after T_2	17%	2%	28%	9%	1%	29%
% reduction casual partners, fairly-high activity group, after T_2	15%	0%	29%	21%	2%	29%
% reduction casual partners, very-high activity group, after T_2	22%	2%	29%	25%	10%	30%
% reduction casual partners, low activity groups, between T_1 and T_2	Not applicable			19%	1%	29%
% reduction casual partners, fairly-high activity group, between T_1 and T_2				20%	1%	29%
% reduction casual partners, very-high activity group, between T_1 and T_2				16%	1%	30%

269

270 **References**

- 271 1. Xiridou M, Heijne J, Adam P, Op de Coul E, Matser A, de Wit J, et al. How the Disruption in
272 Sexually Transmitted Infection Care Due to the COVID-19 Pandemic Could Lead to Increased
273 Sexually Transmitted Infection Transmission Among Men Who Have Sex With Men in The
274 Netherlands: A Mathematical Modeling Study. *Sex Transm Dis.* 2022;49(2):145-53. doi:
275 10.1097/olq.0000000000001551. PubMed PMID: 34475357.
- 276 2. Statistics Netherlands. The Netherlands in figures [Accessed: 24 January 2023]. Available
277 from: <https://opendata.cbs.nl/#/CBS/en>.
- 278 3. National Institute of Public Health and the Environment (RIVM). National database of
279 notifiable infectious diseases [Accessed: 13 December 2022]. Available from:
280 <https://www.rivm.nl/sniv/handleiding-osiris>.
- 281 4. Marcus U, Hickson F, Weatherburn P, Schmidt AJ. Estimating the size of the MSM
282 populations for 38 European countries by calculating the survey-surveillance discrepancies (SSD)
283 between self-reported new HIV diagnoses from the European MSM internet survey (EMIS) and
284 surveillance-reported HIV diagnoses among MSM in 2009. *BMC Public Health.* 2013;13:919. Epub
285 2013/10/04. doi: 10.1186/1471-2458-13-919. PubMed PMID: 24088198; PubMed Central PMCID:
286 PMC3850943.
- 287 5. Rutgers NISSO Group. Sexual health in the Netherlands. Delft: Eburon; 2006.
- 288 6. Man Tot Man. Do this if you have monkeypox. 2022. [Accessed: 24 January 2023]. Available
289 from: <https://www.mantotman.nl/en/do-this-if-you-have-monkeypox>.
- 290 7. Soa Aids Nederland. Uit de praktijk: 2 plekjes op de eikel, dat is toch geen monkeypox?
291 Published online 30 June 2022. [Accessed: 24 January 2023]. Available from:
292 [https://www.soaaids.nl/nl/professionals/themas/seksoa-magazine/uit-praktijk-2-plekjes-op-eikel-dat-](https://www.soaaids.nl/nl/professionals/themas/seksoa-magazine/uit-praktijk-2-plekjes-op-eikel-dat-is-toch-geen-monkeypox)
293 [is-toch-geen-monkeypox](https://www.soaaids.nl/nl/professionals/themas/seksoa-magazine/uit-praktijk-2-plekjes-op-eikel-dat-is-toch-geen-monkeypox).

- 294 8. NOS Nieuws. In the Netherlands 167 persons diagnosed with monkeypox by now (original
295 title: "In Nederland nu bij 167 mensen apenpokkenbesmetting vastgesteld"). NOS; published online
296 22 June 2022. [Accessed: 15 November 2022]. Available from: [https://nos.nl/artikel/2433610-in-
297 nederland-nu-bij-167-mensen-afenpokkenbesmetting-vastgesteld](https://nos.nl/artikel/2433610-in-nederland-nu-bij-167-mensen-afenpokkenbesmetting-vastgesteld).
- 298 9. van Ewijk C, Miura F, van Rijckevorsel G, de Vries H, Welkers M, van den Berg O, et al.
299 Monkeypox outbreak in the Netherlands in 2022: public health response, epidemiological and clinical
300 characteristics of the first 1000 cases and protection of the first-generation smallpox vaccine.
301 medRxiv. DOI: 10.1101/2022.10.20.22281284.
- 302 10. Adam PCG, Op de Coul ELM, Bos H, Zantkuijl P, Zuillhof W, Xiridou M, et al. Monkeypox-
303 related changes in behaviour among MSM in the Netherlands and their impact on the monkeypox
304 outbreak: using behavioural research and theorising to inform the monkeypox response. Utrecht
305 University and Institute for Prevention and Social Research, Utrecht, the Netherlands, 2022.
- 306 11. Soa Aids Nederland. Samenwerking zorg en horeca onmisbaar in aanpak monkeypox-
307 uitbraak. Published online 6 October 2022. [Accessed: 20 December 2022]. Available from:
308 [https://www.soaids.nl/nl/professionals/actueel/nieuwsbericht/samenwerking-zorg-horeca-onmisbaar-
309 in-aanpak-monkeypox-uitbraak](https://www.soaids.nl/nl/professionals/actueel/nieuwsbericht/samenwerking-zorg-horeca-onmisbaar-in-aanpak-monkeypox-uitbraak).
- 310 12. McKay KDB, R.J.; Conover, W.J. A comparison of three methods for selecting values of input
311 variable in the analysis of output from a computer code. *Technometrics* 1979;21:239-45.
312