

Supplemental Material

Structural Elucidation of β_1 - and β_2 -Transferrin Using Microprobe-Capture In-Emitter Elution
and High-Resolution Mass Spectrometry

Ruben Yiqi Luo^{1,2}, Christopher Pfaffroth², Samuel Yang¹, Kevin Hoang², Priscilla S.-W.

Yeung^{1,2}, James L. Zehnder^{1,2}, Run-Zhang Shi^{1,2}

¹Department of Pathology, Stanford University, Stanford, CA, USA

²Clinical Laboratories, Stanford Health Care, Palo Alto, CA, USA

Running Title: Elucidation of β_1 - and β_2 -Transferrin Using MPIE Coupled with HR-MS

Corresponding Author: Ruben Yiqi Luo

Address: 3375 Hillview Ave, Palo Alto, CA 94304

Tel: 650-724-1318

Email: rubenluo@stanford.edu

Key Words: β_1 -Transferrin, β_2 -Transferrin, MPIE, HR-MS, N-Glycan

Figure S1

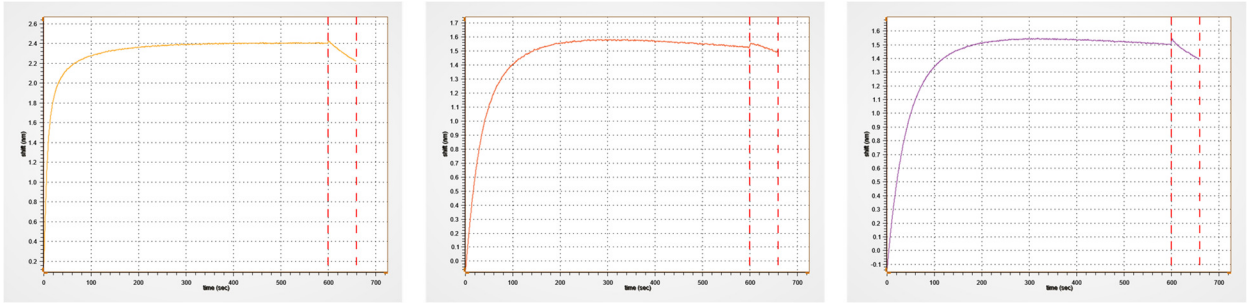


Figure S1. BLI sensorgrams obtained on the 3 microprobes capturing Tf from a serum sample (left), a CSF sample (middle), and a secretion sample from a patient diagnosed of CSF leak (right) (same samples as in Figure 1).

Figure S2

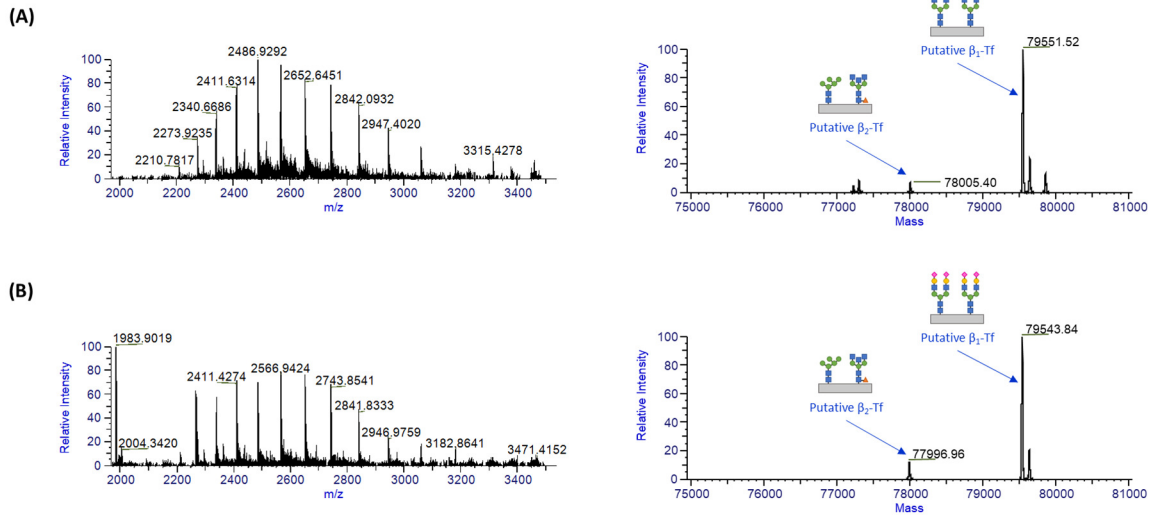


Figure S2. The MPE-ESI-MS results of two CSF samples containing Tf variants (A) and (B): HR-MS raw mass spectra of captured Tf molecules (left) and deconvoluted mass spectra (right), showing the Tf glycoforms. The molecular masses of the putative β_1 -Tf and β_2 -Tf were different

from those of β_1 -Tf and β_2 -Tf in normal CSF samples, but the mass difference between the two Tf glycoforms retained as 1546 Da.

Table S1

Table S1. MS peak intensities of β_1 -Tf and β_2 -Tf in the deconvoluted mass spectra (the entire time window of Tf elution selected for deconvolution): a pooled CSF sample was mixed with water at 1:1, 1:4, 1:9, and 1:19 ratios, the neat pooled CSF sample, and the pooled CSF sample spiked with 10 $\mu\text{g/ml}$ and 100 $\mu\text{g/ml}$ Tf standard.

Sample	MS Peak Intensity of β_1 -Tf	MS Peak Intensity of β_2 -Tf
1:1 Pooled CSF : Water	4.10×10^5	1.62×10^5
1:4 Pooled CSF : Water	2.52×10^5	7.03×10^4
1:9 Pooled CSF : Water	9.47×10^4	1.98×10^4
1:19 Pooled CSF : Water	4.18×10^4	Not Detected