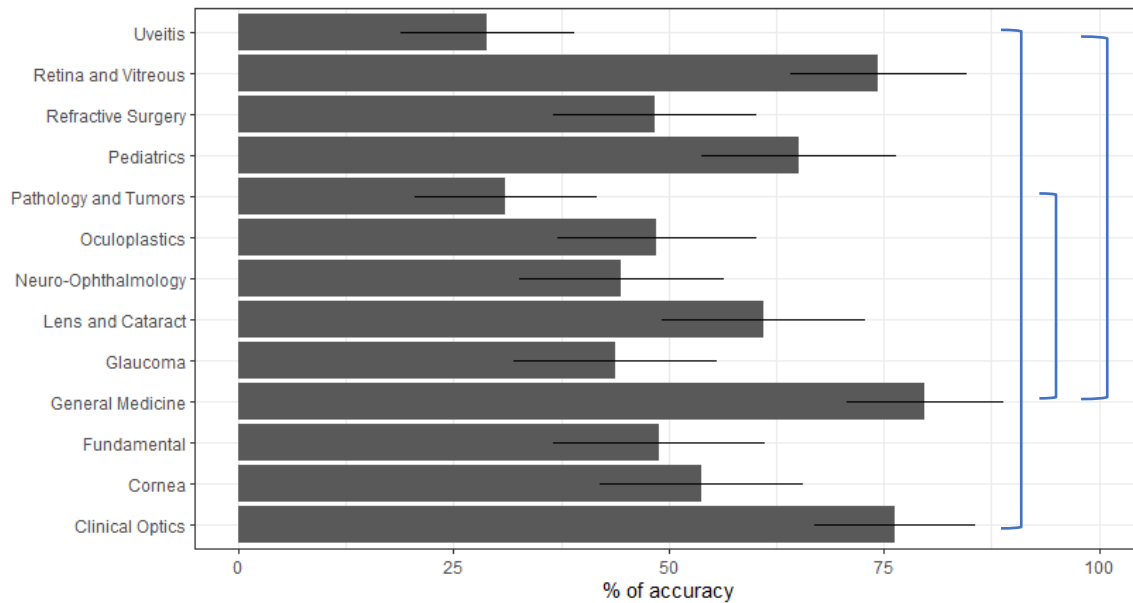
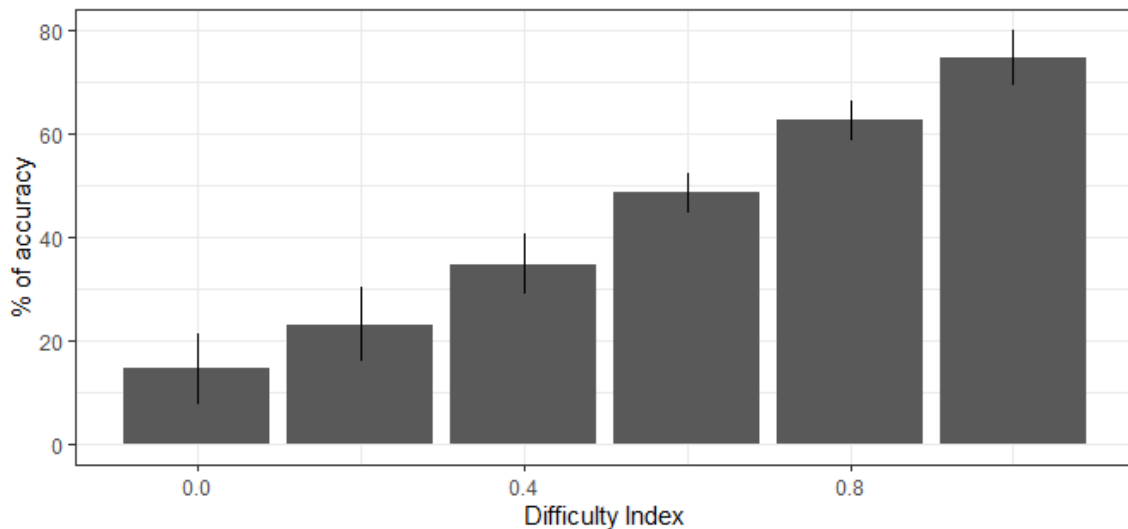


Supplemental Figure 2: Post hoc analysis using Tukey’s test to isolate the effect of exam section, cognitive level and difficulty index using the BCSC questions. (A) Bar plot of the percentage of accuracy by exam section. The blue square brackets identify the significant differences. The significant contrasts were the following: Clinical Optics – Uveitis (estimate 0.473, $p = 0.042$), General Medicine - Pathology and Tumors (estimate 0.487, $p=0.029$) and General Medicine – Uveitis (estimate 0.508, $p = 0.013$). **(B)** Predicted percentage of accuracy by difficulty index. Accuracy increased with increasing difficulty index (easier questions). **(C)** Predicted percentage of accuracy comparing Low and High cognitive levels. Higher accuracy was associated to Low cognitive level questions.

(A)



(B)



(c)

